

APPENDIX – B

Adult Offender Dashboard

The following dashboard shows offender and re-offender characteristics, needs and rates of reoffending. It includes

- A written summary of analyses
- Reoffending Rates

Demographic characteristics of offenders

- Who is most likely to offend
- Where are offenders most likely to live
- Offending Behaviour
- Offending Needs

Blaby Community Safety Partnership Strategic Assessment 2010/11

Category: adult offenders

Summary

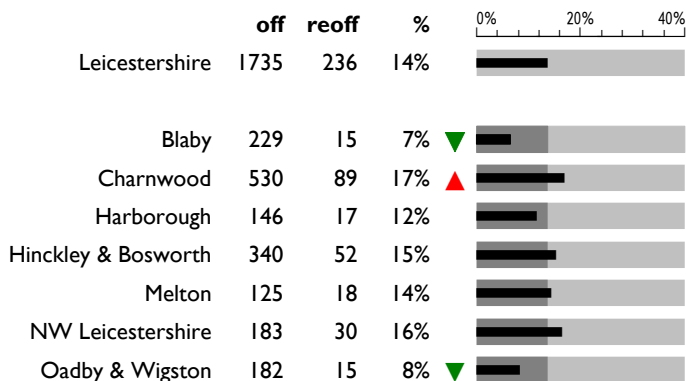
A total of 229 offenders were resident in Blaby District.

The adult reoffending rate in Blaby is 7%, significantly lower than the overall County reoffending rate, 14%.

The most common offender needs identified in Blaby District are 'Thinking' (38%) and 'Relationships' (37%). However, offenders in Blaby District are less likely to have identified needs associated with reoffending compared to offenders across the County, in particular 'Education', 'Relationships', 'Drugs' and 'Accommodation' needs.

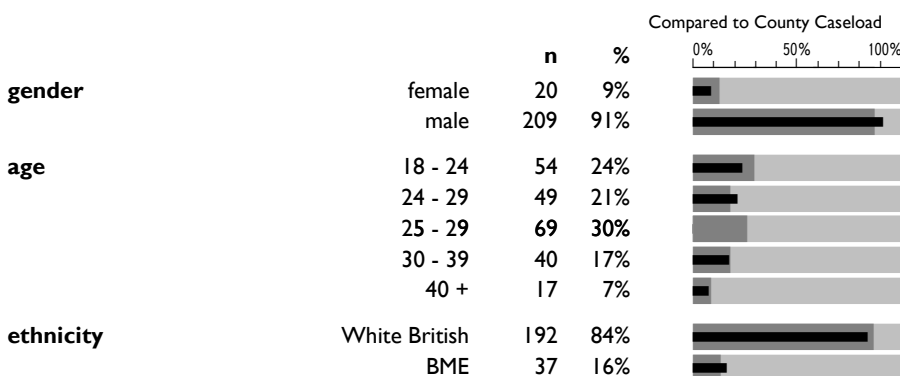
See full PSA2011 document for further detail

Reoffending Rates

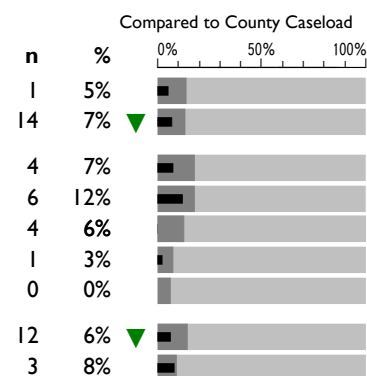


All Offenders

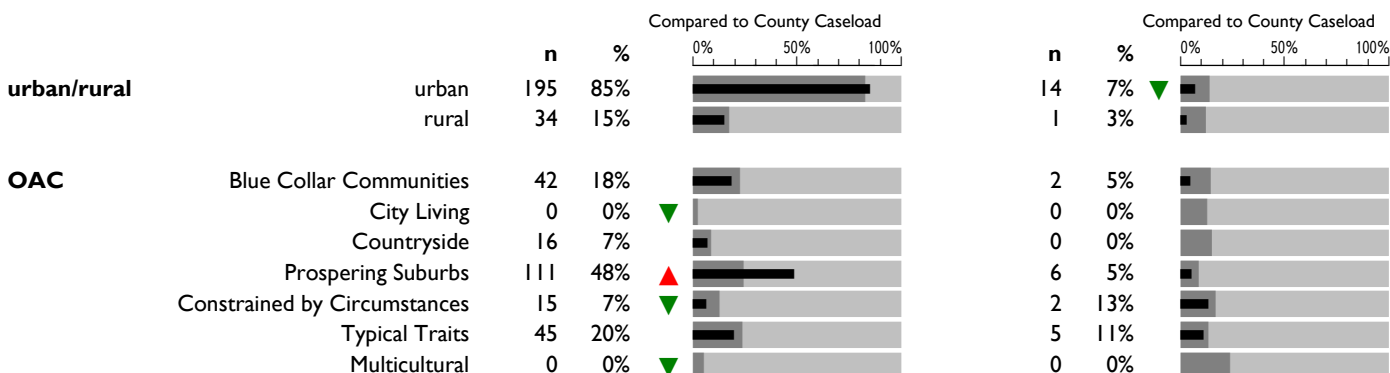
Who is most likely to offend?



Reoffenders



Where are offenders most likely to live?

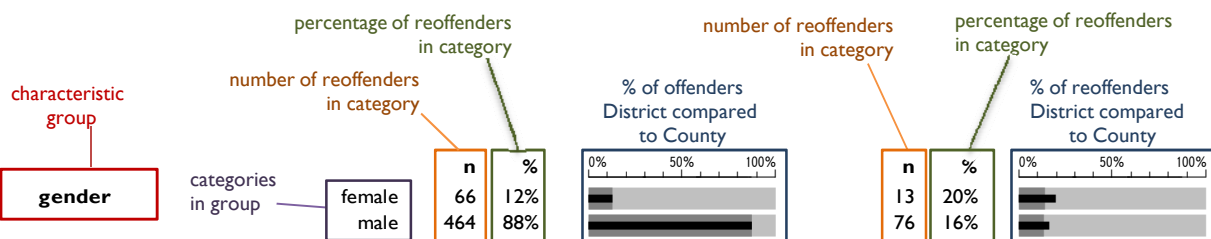


Instructions & Key

Each row of the report provides details of each offender and reoffender characteristic

▲ significantly high compared to County
▼ significantly low compared to County

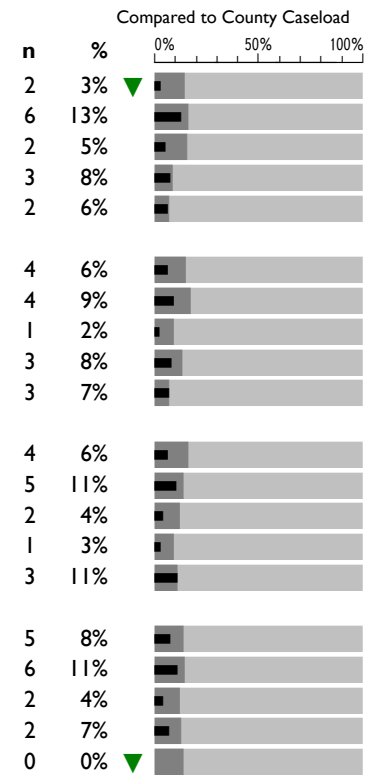
thin black bar : District %
thick grey bar : County %



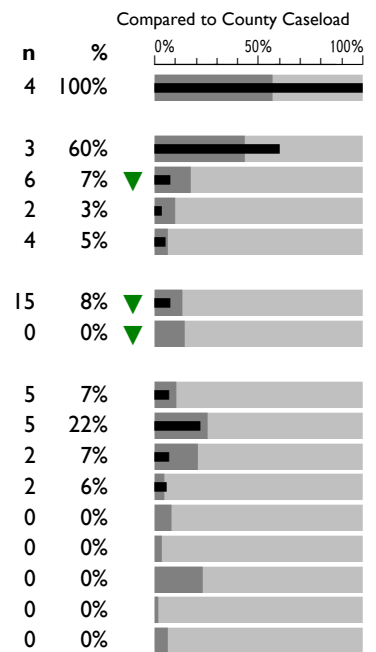
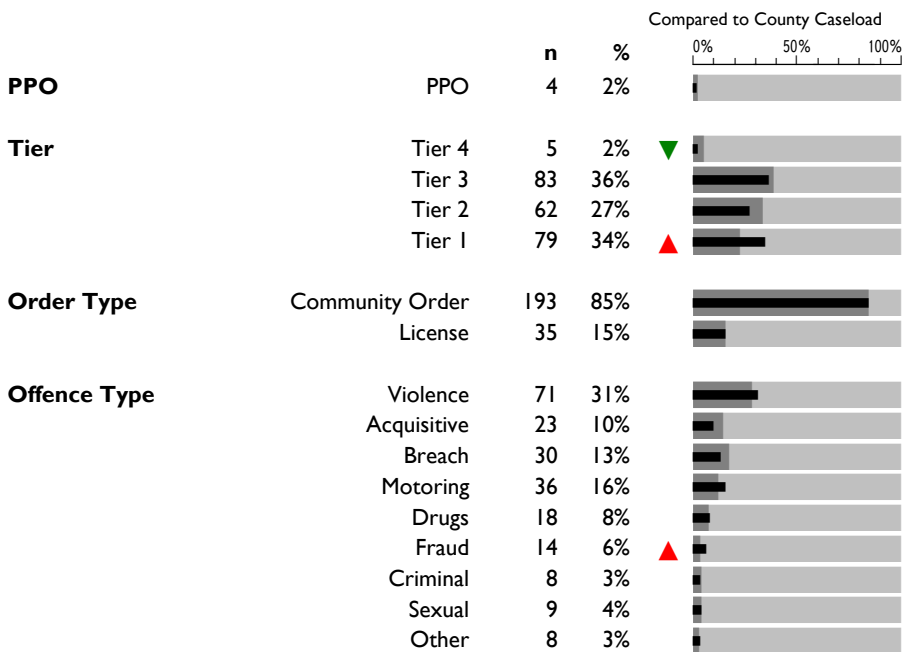
All Offenders

Reoffenders

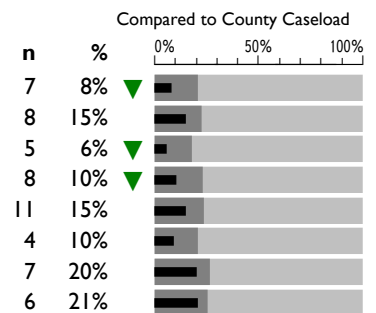
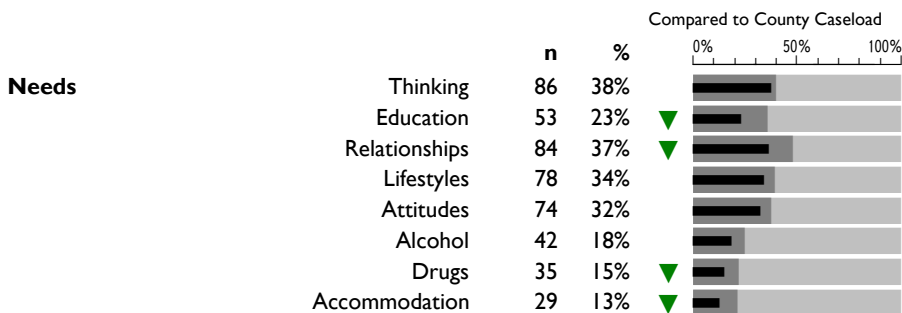
Where are offenders most likely to live?



Offending Behaviour



Offender Needs



Data Source

Data provided by Leicestershire and Rutland Probation Trust

Includes 1,735 individuals on the Probation caseload as at April 2010, resident in Leicestershire County, tracking reoffending behaviour for 12 months to March 2011.