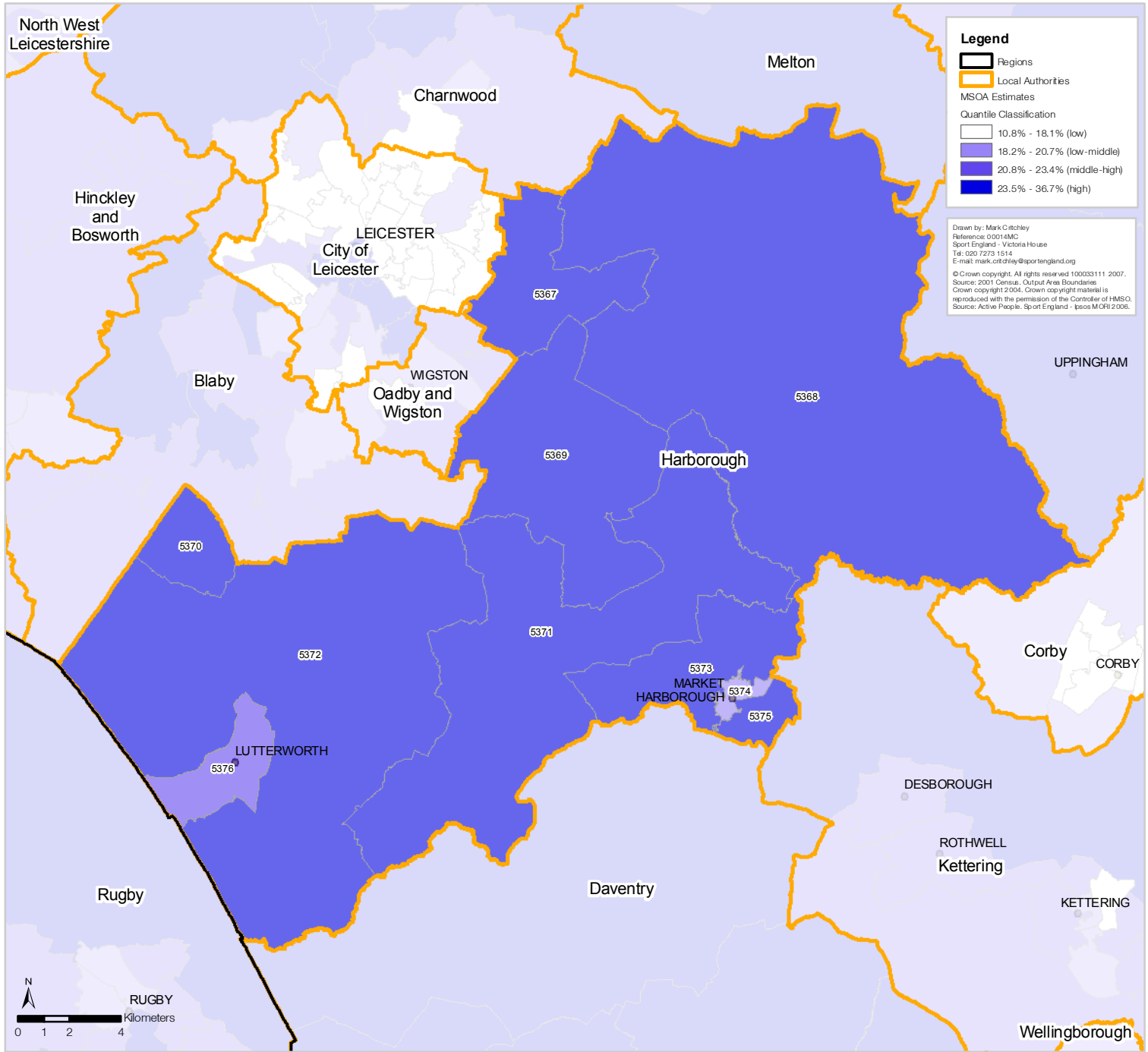


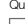





### Harborough District Council Participation (3 x 30) Estimates by Middle Super Output Area (MSOA)



**Legend**

-  Regions
-  Local Authorities
- MSOA Estimates
- Quantile Classification
-  10.8% - 18.1% (low)
-  18.2% - 20.7% (low-middle)
-  20.8% - 23.4% (middle-high)
-  23.5% - 36.7% (high)

Drawn by: Mark Citchley  
 Reference: 00014MC  
 Sport England - Victoria House  
 Tel: 020 7273 1514  
 E-mail: mark.citchley@sportengland.org  
 © Crown copyright. All rights reserved 100033111 2007.  
 Source: 2001 Census, Output Area Boundaries  
 Crown copyright 2004. Crown copyright material is reproduced with the permission of the Controller of HMSO.  
 Source: Active People, Sport England - Ipsos MORI 2006.

*MSOA Code	Estimate	Lower **CL	Upper **CL
E02005367	23.79%	18.62%	30.17%
E02005368	25.99%	20.74%	32.34%
E02005369	24.86%	19.87%	30.98%
E02005370	24.41%	19.45%	30.44%
E02005371	24.09%	19.19%	30.08%
E02005372	25.11%	20.02%	31.29%
E02005373	24.28%	19.36%	30.30%
E02005374	19.60%	15.31%	25.00%
E02005375	24.04%	19.05%	30.15%
E02005376	22.84%	18.09%	28.69%

\*Add E0200 to MSAO map label to reference correct code in table.  
 \*\* Confidence Level

Participation is defined as the percent of the adult population participating in at least 30 minutes of sport and active recreation (including recreational walking and cycling) of at least moderate intensity on at least 3 days a week.