

Charnwood Priority Neighbourhood Profile

Loughborough West

December 2007

Produced by the Research and Information Team, Chief Executive's Department, County Hall, Leicestershire County Council

CONTACTS

For further information relating to this profile please contact:

Neighbourhood Profiles

Rosemary Sutton
Research & Information Team
Leicestershire County Council
County Hall
Glenfield
LE3 8RA
T: 0116 305 7262
E: rgsutton@leics.gov.uk

Land Use

Alex Lea
Research & Information Team
Leicestershire County Council
County Hall
Glenfield
LE3 8RA
T: 0116 305 6803
E: alea@leics.gov.uk

Economic Research

Ian Neale
Research & Information Team
Leicestershire County Council
County Hall
Glenfield
LE3 8RA
T: 0116 305 8097
E: ineale@leics.gov.uk

Demography

Felicity Manning
Research & Information Team
Leicestershire County Council
County Hall
Glenfield
LE3 8RA
T: 0116 305 7260
E: fmanning@leics.gov.uk

Crime and Disorder

Jefferson Hardy
Research & Information Team
Leicestershire County Council
County Hall
Glenfield
LE3 8RA
T: 0116 305 7342
E: jhardy@leics.gov.uk

Census / Community Information

Robert Radburn
Research & Information Team
Leicestershire County Council
County Hall
Glenfield
LE3 8RA
T: 0116 305 6891
E: rradburn@leics.gov.uk

CONTENTS

Executive Summary.....	4	5 Healthier Communities	
Purpose of Report.....	5	Synthetic Estimates of Healthy Lifestyle Behaviours.....	22
1 Demographics		6 Older People	
Demographic Profile.....	8	Benefits take up and Older People.....	25
Ethnicity and Religion.....	10	7 Economic Development	
2 Deprivation		Employment.....	26
Indices of Multiple Deprivation.....	11	Unemployment and Benefits.....	27
3 Stronger Communities		8 Cleaner and Greener	
Access to Services - Education and Health.....	15	Travel to Work.....	29
Access to Services - Services and Amenities.....	16	Fixed Penalty Notices.....	31
Voter Turnout	17	9 Children and Young People	
4 Safer Communities		Attainment Levels.....	32
Crime.....	18	School Exclusions.....	33
Domestic Violence.....	21	Children in Care.....	34
		Teenage Pregnancy Rate.....	34
		Wild Card Uptake.....	34

This report was produced by the Research and Information Team at Leicestershire County Council during December 2007.

Whilst every effort has been made to ensure the accuracy of the data contained in this report, the County Council can accept no responsibility for any errors or omissions.

Rosemary Sutton
 Research & Information Team
 Leicestershire County Council
 County Hall
 Glenfield LE3 8RA
 T: 0116 305 7262
 E: rgsutton@leics.gov.uk

EXECUTIVE SUMMARY

- The population of the Loughborough West monitoring area is 12,298 (2001 Census of Population)
- There is a large student population in the monitoring area. In 2004 approximately 51% of the population were aged 16-29
- The monitoring area has a particularly large non-household population which will largely be students
- There are 3,472 households in the monitoring area, with an average household size of 2.3 persons
- There is a relatively large BME community in the Loughborough West monitoring area (11.9% compared to 7.3% in the County)
- The largest Black Minority Ethnic groups are Asian or Asian British Indian, White Other, and Chinese or Other Chinese
- The Loughborough West monitoring area experiences a high level of deprivation on a district and national level
- Deprivation in education skills and training and income deprivation affecting children are the most prominent forms of deprivation in the area
- Warwick Way LSOA experiences a particularly high level of deprivation
- The area is reasonably equipped in terms of access to education and health facilities
- The northern part of the Loughborough West monitoring area is the most restricted in terms of access to services and amenities
- There are a limited number of grocery stores, post offices, sports facilities and general conveniences in the area
- Violence against the person and burglary dwelling account for one-third of crime in the Loughborough West monitoring area
- Crime in the Loughborough West monitoring area accounts for 9% of all crime in Charnwood Borough
- The total number of recorded offences has decreased by 9% between 2005/06 and 2006/07 in the Loughborough West monitoring area
- Loughborough Storer and Loughborough Ashby wards have the highest estimated percentages of smoking and binge drinking in Charnwood
- Approximately a third of people in Loughborough Ashby and Loughborough Storer are estimated to be current smokers
- Loughborough Ashby ward has the lowest estimated adult consumption of fruit and vegetables in the whole of Charnwood
- Older people represent a minority 11% of the population in the Loughborough West monitoring area (Census of population 2001)
- The largest proportion of older people are in the 65 to 74 age range
- Only 45% of the working age population are economically active due to the large proportion of students living in the area
- Rates of Domestic Violence are higher in the Loughborough West monitoring area than in the District or County
- The most popular mode of transport used to get to work by both resident and workplace populations is private car or van
- A high percentage of persons in Garendon and Dishley and Hathern wards work from home
- Storer and Ashby wards have a higher proportion of resident population travelling to work by public transport or bicycle
- Key stage achievement falls below district and county levels and below the floor targets set for the county
- 20% less children achieve A* to C grades at GCSE than in the District or the County
- 5.4% of pupils living in the Loughborough West monitoring area were excluded from school during 2005/06 which represents twice as many exclusions than for the District or the County
- Between April and October 2006, 16% of children referred to Children's Social Care in Charnwood were living in the monitoring area
- Rates of teenage pregnancies are relatively high, however the area is not considered a "hotspot" for under 18 conceptions

PURPOSE OF REPORT

Charnwood District Council are currently in the process of implementing neighbourhood management processes to be delivered in five key Neighbourhood Management zones in Charnwood. These priority neighbourhoods were identified as urban areas experiencing particular deprivation using the Poverty and Social Exclusion Index 2001 (PSE 2001). The Loughborough West area was identified as an area for intervention as the Output areas within the zone were amongst the 10% poorest in the County (PSE 2001). For further information about the PSE (2001) and how intervention areas were identified please visit:

http://www.leicestershiretogether.org/suggested_neighbourhoodmanagement_boudaries.pdf

The purpose of this report is to review the existing knowledge and information available about the Loughborough West area as a means of supporting the evidence base to help those residents, community representatives and service providers who will be discussing how the area and local services can be improved.

Data

The data sources used to compile this report are

- Census of Population (2001) (ODPM)
- Indices of Multiple Deprivation (2004) (ODPM)
- Office for National Statistics (ONS) mid-year population estimates
- Leicestershire Constabulary Monthly Incidents 2006
- The Annual Business Enquiry (2005)
- Leicestershire Health Informatics (2001-2004)
- Department for Work and Pensions (DWP) claimant data

- Local Education Authority (LEA) data on exclusions (2005-2006)
- PointX National Points of Interest database (2006)
- Children's Social Care data (2006)
- Teenage Pregnancy Unit data on conceptions (2001– 2003).

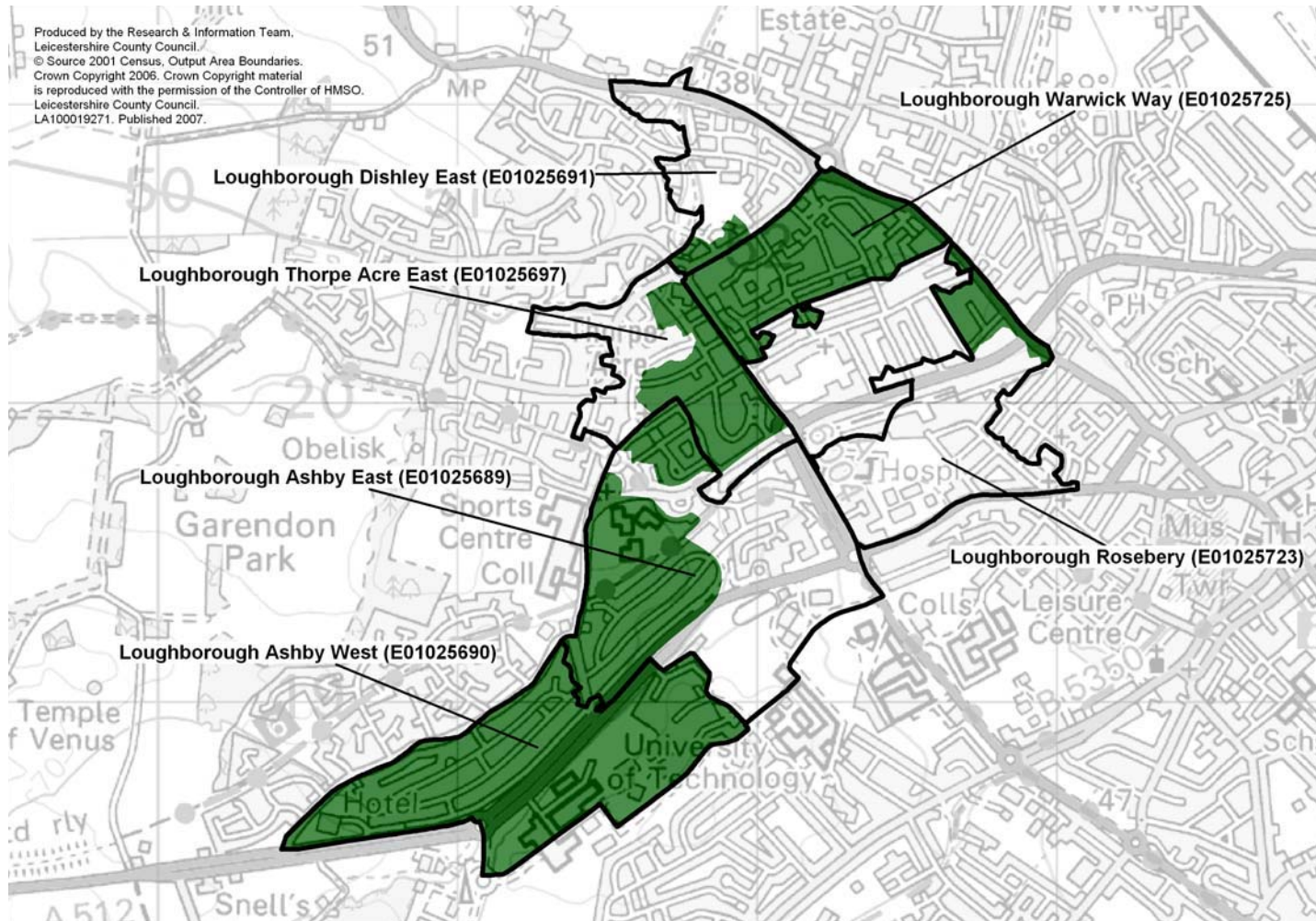
Neighbourhood intervention areas are defined by small clusters of Output areas. Data sources providing information to such a low geographical level are limited therefore this report will include data at Lower Super Output Area (LSOA) level (areas each containing approximately 1500 people). In this report LSOAs define the monitoring area. In instances where data is not available at LSOA level, data is examined at ward level. Specifically six LSOAs in and around the Loughborough West Neighbourhood management zone shall be examined as detailed in the table below:

Table 0.1: Geographical Areas in and Around the Loughborough West Priority Neighbourhood

District	Ward	Super Output Area
Charnwood	Loughborough Dishley and Hathern	Loughborough Dishley East
Charnwood	Loughborough Garendon	Loughborough Thorpe Acre East
Charnwood	Loughborough Storer	Loughborough Rosebery
Charnwood	Loughborough Storer	Loughborough Warwick Way
Charnwood	Loughborough Ashby	Loughborough Ashby East
Charnwood	Loughborough Ashby	Loughborough Ashby West

The map below depicts the monitoring area (outlined by the dark black border) and the intervention area (depicted by the small area shaded in green) for Loughborough West. As the monitoring area is much larger than the intervention area this report will not always pick up all the issues of the priority neighbourhood itself as information will be diluted.

Map 0.1: Loughborough West Intervention and Monitoring areas



Aerial View

The north of the Loughborough West priority area contains a large area of low-rise flats, possibly consisting of social housing. Located nearby is a large edge of town retail development. Moving south, the area comprises of extensive semi-detached houses and short terraces built around the Thorpe Acre and De Lisle schools. The southern part of the area consists of semi-detached and terraced housing on the northern

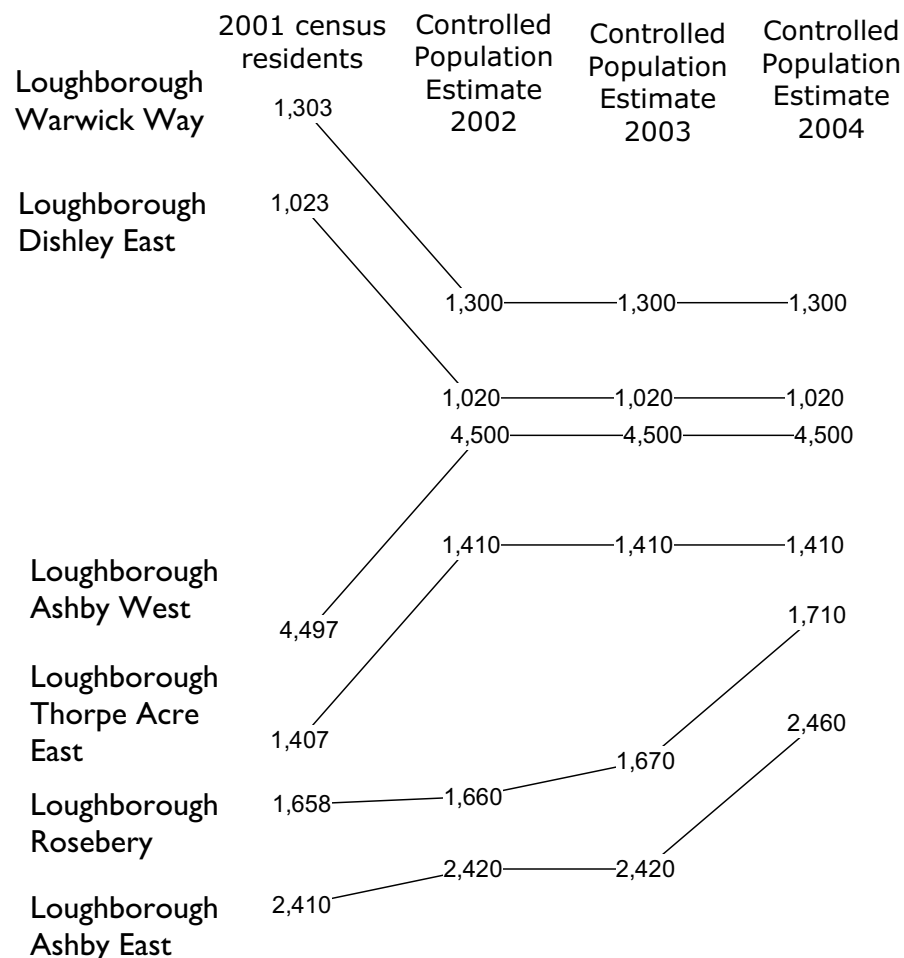
Map 0.2: Aerial Photograph of the Loughborough West Intervention Areas



I: DEMOGRAPHICS

Summary

- The population of the LSOAs in and around the Loughborough West Priority Neighbourhood is 12,298 (2001 Census of Population)
- There is a large student population in the monitoring area. In 2004 approximately 51% of the population were aged 16-29
- The monitoring area has a particularly large non-household population



The following population estimates have been produced by the Research and Information Team at Leicestershire County Council. The estimates were calculated using net dwelling stock change added to base data from the 2001 Census. The results have been adjusted to ONS 2004 mid-year local authority district estimates for consistency.

According to the 2001 Census actual total population in the LSOAs in and around the Loughborough West Priority Neighbourhood was 12,298 persons. The net population in 2004 was estimated to be approximately 12,400 persons indicating a population increase (Leicestershire County Council controlled population estimates). The estimated population change for the LSOAs in the Loughborough West monitoring area is depicted to the left. There appears to have been a degree of fluctuation in all the LSOAs. The most notable change in population occurred in Loughborough Rosebery and Loughborough Ashby East where there was an increase of approximately 50 persons in each LSOA. This will be directly attributable to an increase in the number of dwellings in Loughborough Ashby East and Loughborough Rosebery LSOA.

Using the 2001 Census of population it is possible to analyse the number of non-household residents. There is a particularly high non-household population in the Loughborough West monitoring area of approximately 3,862 persons. This is attributable to the large student population living in the area during term time and attending Loughborough University.

Graph I.1: Estimated population change in Loughborough West

Notes: Controlled population estimates are rounded to the nearest ten

Figures on the following pages are estimates based on the method described and should not be regarded as precise to the exact figure quoted

No liability is accepted by ONS or Leicestershire County Council for the consequences of the use of these statistics

Whilst every measure has been taken to ensure the accuracy of the data contained within this report the County Council cannot take any responsibility for any errors or omissions

Age Structure

The National Statistics experimental small area population estimates provide a broad age breakdown at Lower Super Output Area level. Over half of the population (51%) in the monitoring area are in the 16-29 age category which is approximately 6,400 persons. This is depicted in Graph 1.2. The high volume of persons in this age group is accounted for by the large student population living in the area and attending Loughborough University. Other populations in the area appear to have remained relatively consistent throughout the four year period whilst the 16-29 age group has increased by more than 400 persons.

Births and deaths by ward

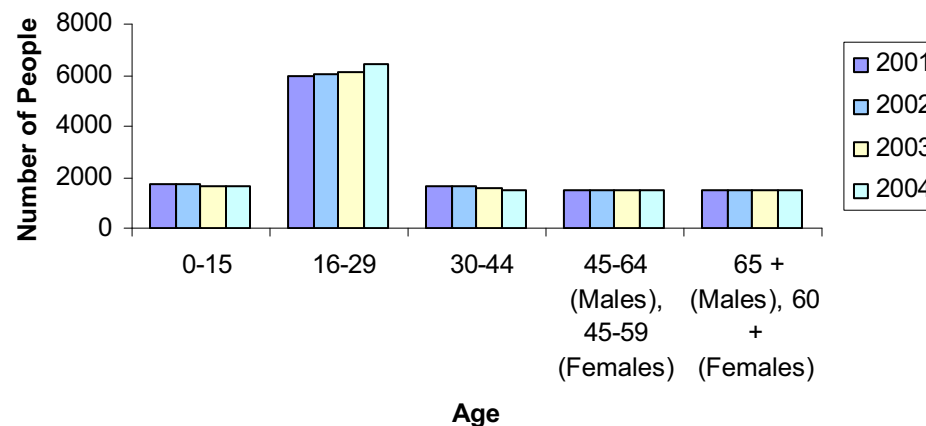
Table 1.1 shows the number of births in the wards in and around the Loughborough West monitoring area during 2005 (ONS, 2005), data is available at a ward level only. It is apparent that there was a majority of male births (53%) over female births (47%) in the area. The number of deaths per ward is shown in Table 1.2. In 2005 more than half of all deaths in the wards in and around the Loughborough West monitoring area were male.

Table 1.1: Number of Live Births by Ward (2005)

Ward	Males	Females	Total Births
Loughborough Ashby	19	25	44
Loughborough Dishley and Hathern	24	23	47
Loughborough Garendon	35	21	56
Loughborough Storer	24	23	47
Total	102	92	194

Source: ONS General Release

Graph 1.2: Age Structure: Loughborough West Monitoring Area



Source: ONS experimental yearly population estimates (broad age breakdown)

Table 1.2: Number of Deaths by Ward (2005)

Ward	Males	Females	Total Deaths
Loughborough Ashby	24	14	38
Loughborough Dishley and Hathern	15	13	28
Loughborough Garendon	31	26	57
Loughborough Storer	25	37	62
Total	95	90	185

Source: ONS General Release

Housing

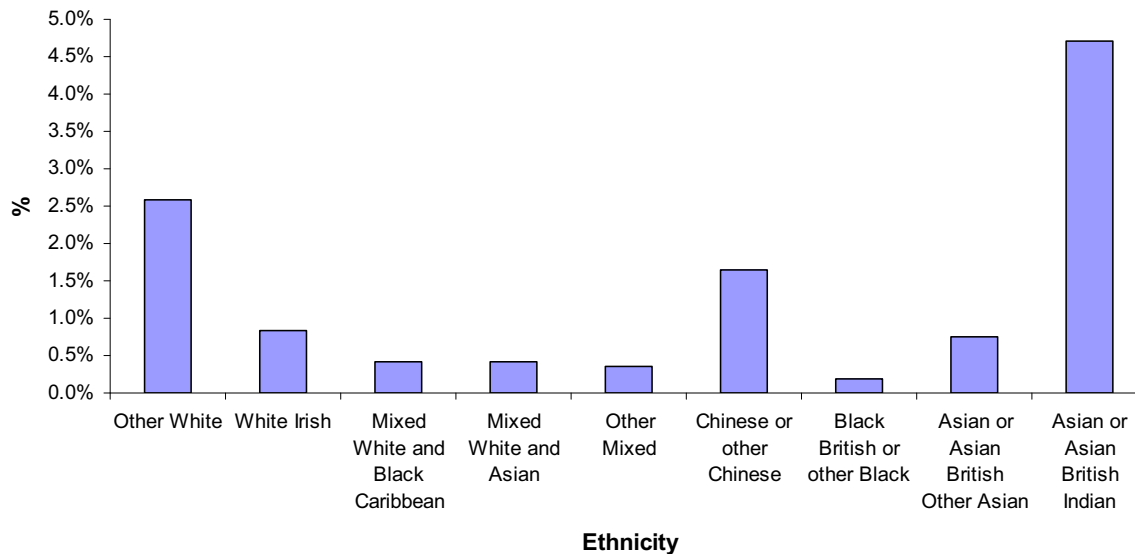
According to Leicestershire County Council yearly household estimates (2004) there are 3,472 households in the LSOAs in the Loughborough Monitoring area. There has been a small increase in the estimated number of households in the area between 2001 and 2004, however, when compared with changes to population the average occupancy of households has remained consistent. The average household size in 2004 was estimated to be 2.3 persons per dwelling.

ETHNICITY AND RELIGION

Summary

- There is a relatively large BME community in the Loughborough West monitoring area (11.9% compared to 7.3% in the County)
- The largest Black Minority Ethnic groups are Asian or Asian British Indian, White Other, and Chinese or Other Chinese
- 62% of the population are Christian, 6% are Buddhist, Hindu, Jewish, Muslim, Sikh or Other

Graph 1.3: BME population



Ethnicity

The 2001 Census of Population was used to provide a breakdown of ethnic groups in the Loughborough West Monitoring area. An overwhelming majority of persons (88.1%) were White British. The overall Black and Minority Ethnic (BME) origin population (all people other than White British) was 1,434, or 11.9%. Comparatively this is higher than the Charnwood proportion of 9.4% and noticeably higher than the Leicestershire County proportion of 7.3%. The largest BME groups were Asian or Asian British Indian, White Other, and Chinese or Other Chinese. A breakdown of BME groups in the Loughborough West Monitoring area is depicted in Graph 1.3.

Religion

A voluntary question was asked in the 2001 census about religion, 62% of the population in the Loughborough West monitoring area identified themselves as being Christian. A minority (6% or 869 persons) identified their religion as being Buddhist, Hindu, Jewish, Muslim, Sikh or Other and 889 persons chose not to state their religion.

2: INDICES OF DEPRIVATION

Summary

- **The Loughborough West monitoring area experiences a high level of deprivation on a district and national level**
- **Deprivation in education skills and training and income deprivation affecting children are the most prominent form of deprivation in the area**
- **Loughborough Warwick Way LSOA experiences the highest level of deprivation in the monitoring area**

The Indices of Multiple Deprivation 2004 (IMD 2004) were produced by the then Office of the Deputy Prime Minister (ODPM) and are a comprehensive and up to date way of measuring relative deprivation affecting small areas in England. The IMD combines different aspects of deprivation (including income, employment, health and education) into a single deprivation score which can then be ranked nationally and locally.

The IMD are also produced at Lower Super Output Area (LSOA). The IMD (2004) combines indicators across seven domains into a single deprivation score and rank for each LSOA. The Domains are shown below:

- Income Deprivation
- Living Environment Deprivation
- Crime
- Barriers to Housing and Services
- Health Deprivation and Disability
- Employment Deprivation
- Education, Skills and Training Deprivation

This section examines the LSOAs within the Loughborough West monitoring area. There are 32,482 LSOAs in England which are ranked from 1 to 32,482, where 1 = most deprived, and a rank of 32,482 = least deprived. It is important to note that by ranking areas locally, some areas will invariably be ranked either high or low, even though they may be 'average' when ranked nationally. Therefore, to obtain a true reflection, district rankings must be looked at in relation to both the county and national picture.

Index of Multiple Deprivation

Table 2.1: IMD LSOA rankings

LSOA	District Rank (1 to 100)	County Rank (1 to 396)	National Ranking (1 to 32482)	IMD SCORE
Loughborough Warwick Way	2	4	5056	38.51
Loughborough Dishley East	10	28	11639	23.14
Loughborough Ashby East	12	32	12551	21.77
Loughborough Thorpe Acre East	13	38	13023	21.10
Loughborough Rosebery	19	62	16360	16.88
Loughborough Ashby West	38	128	20800	12.59

The Loughborough West monitoring area experiences a high level of deprivation on a district and national level. Five of the LSOAs in the monitoring area rank within the 50% most deprived nationally and the 20% most deprived in the district. Loughborough Warwick Way LSOA experiences a particularly high level of deprivation. Respective rankings can be seen in Table 2.1.

Income Deprivation

This domain measures the proportion of the population in receipt of income support or other means tested benefits. Table 2.2 shows that Loughborough Warwick Way experiences the highest level of income deprivation in the monitoring area. It is within the 5% most deprived LSOAs in the district and the 15% most deprived nationally for this domain suggesting that a high number of people living in Loughborough Warwick Way LSOA are in receipt of benefits.

Table 2.2: Income Deprivation

LSOA	District Rank (1 to 100)	County Rank (1 to 396)	National Ranking (1 to 32482)	INCOME SCORE
Loughborough Warwick Way	4	6	4154	0.28
Loughborough Thorpe Acre East	11	24	9434	0.17
Loughborough Ashby East	14	35	10952	0.15
Loughborough Dishley East	16	50	13177	0.13
Loughborough Rosebery	21	72	15082	0.11
Loughborough Ashby West	41	139	19968	0.07

Income Deprivation Affecting Children

Income deprivation affecting children is measured as the proportion of children aged under 16 years living in income deprived households (e.g. households in receipt of income support and other means tested benefits). The LSOAs in the Loughborough West Monitoring area are ranked in the 35% most deprived LSOAs in the District for this domain. This indicates a relatively high number of children living in income deprived households. Loughborough Warwick Way experiences the highest level of IDAC in the monitoring area. In this LSOA nearly 45% of the population of children aged under 16 live in income deprived households. In the monitoring area as a whole there are 494 children living in income deprived households which is approximately 30% of the population aged under 16. Table 2.3 shows respective rankings and the number of income deprived children living in each LSOA.

Table 2.3: Income deprivation affecting children

LSOA	District Rank (Ranked 1 to 100)	County Rank (Ranked 1 to 396)	National Rank (Ranked 1 to 32482)	Population under 16 (census 2001)	Estimated no of children living in income deprived households
Loughborough Warwick Way	2	4	3755	291	127
Loughborough Ashby West	6	11	7161	402	129
Loughborough Ashby East	7	12	7228	436	140
Loughborough Rosebery	11	22	8795	185	52
Loughborough Thorpe Acre East	24	85	16224	203	29
Loughborough Dishley East	32	111	17916	148	18
Total				1665	494

Income Deprivation Affecting Older People

Table 2.4 shows income deprivation affecting older people, that is, the proportion of people aged over 60 years in each area who live in income deprived households. Loughborough Rosebery is the most deprived LSOA in the district for this domain. Using the 2001 Census of population as a denominator the percentage of older persons living in income deprived households was calculated. Approximately 24% of the population aged 60 or over who are resident in the Loughborough West monitoring area live in income deprived households (411 persons out of a population of 1703).

Table 2.4: Income deprivation affecting older people

LSOA	District Rank (Ranked 1 to 100)	County Rank (Ranked 1 to 396)	National Rank (Ranked 1 to 32482)	Population < 60 (census 2001)	Estimated no of old people living in income deprived households
Loughborough Rosebery	1	2	1698	187	68
Loughborough Thorpe Acre East	7	8	4225	534	152
Loughborough Warwick Way	9	10	4834	298	81
Loughborough Ashby East	25	43	11525	325	57
Loughborough Ashby West	26	47	12400	229	38
Loughborough Dishley East	46	161	18872	130	15
Total				1703	411

Barriers to Housing and Services

Overall there is little deprivation in the Loughborough West monitoring area in terms of Barriers to Services. This domain measures the barriers which the local population face to accessing key local services such as post offices, doctors surgeries, primary schools, and convenience stores. In this respect all six LSOAs are ranked in the 60% least deprived within the District and within the 35% least deprived in England.

Table 2.5: Barriers to Housing and Services

LSOA	District Rank (1 to 100)	County Rank (Ranked 1 to 396)	National Rank (Ranked 1 to 32482)	BARRIERS TO HOUSING AND SERVICES SCORE
Loughborough Warwick Way	45	180	22282	15.12
Loughborough Ashby East	54	217	24130	13.48
Loughborough Thorpe Acre East	59	232	24956	12.80
Loughborough Dishley East	65	266	26802	11.07
Loughborough Ashby West	75	301	28993	8.74
Loughborough Rosebery	78	305	29281	8.40

Education

The Indices of Multiple Deprivation 2004 show that the Loughborough West monitoring area experiences high levels of deprivation in education, skills, and training. All six LSOAs rank within the 30% most deprived in the District, the 25% most deprived in the County and the 40% most deprived in England. A deficit of education, skills and training is particularly prevalent in Loughborough Warwick Way which ranks in the 2% most deprived LSOA in the District. And the 5% most deprived LSOA in the Country.

Table 2.6: Education and Skills Deprivation

LSOA	District Rank (1 to 100)	County Rank (Ranked 1 to 396)	National Rank (Ranked 1 to 32482)	EDUCATION SKILLS AND TRAINING SCORE
Loughborough Warwick Way	2	3	1493	63.19
Loughborough Ashby West	4	14	4766	41.71
Loughborough Ashby East	6	19	5281	39.53
Loughborough Thorpe Acre East	19	75	10018	26.01
Loughborough Rosebery	22	86	10958	24.18
Loughborough Dishley East	30	98	11725	22.75

Crime

This domain focuses on deprivation with respect to four major crime themes - burglary, theft, criminal damage and violence. The Loughborough West monitoring area is relatively split in terms of crime. Loughborough Ashby West experiences very little crime whilst Loughborough Rosebery LSOA ranks amongst the 20% most deprived LSOAs in England for crime deprivation. Rankings for all the LSOAs in the area can be seen in Table 2.7.

Table 2.7: Crime Deprivation

LSOA	District Rank (1 to 100)	County Rank (Ranked 1 to 396)	National Rank (Ranked 1 to 32482)	CRIME AND DISORDER SCORE
Loughborough Rosebery	4	14	5907	0.79
Loughborough Ashby East	7	21	7254	0.67
Loughborough Warwick Way	14	41	10362	0.42
Loughborough Dishley East	18	53	12294	0.28
Loughborough Thorpe Acre East	23	67	13333	0.20
Loughborough Ashby West	44	167	21025	-0.35

Employment

The Loughborough West monitoring area is dichotomous in terms of employment deprivation. The LSOAs situated toward the north of the monitoring area have a relatively high level of employment deprivation whilst those situated toward the south do not. This is probably attributable to the southern part of the monitoring area largely being occupied by students.

Table 2.8: Employment Deprivation

LSOA	District Rank (1 to 100)	County Rank (Ranked 1 to 396)	National Rank (Ranked 1 to 32482)	EMPLOYMENT SCORE
Loughborough Warwick Way	2	3	4362	0.19
Loughborough Dishley East	5	7	6418	0.16
Loughborough Thorpe Acre East	12	41	13410	0.10
Loughborough Ashby East	25	102	17895	0.08
Loughborough Rosebery	85	329	28220	0.04
Loughborough Ashby West	97	379	30424	0.03

Health Deprivation and Disability

This domain identifies areas with relatively high rates of people who die prematurely or whose quality of life is impaired by poor health or who are disabled. Loughborough West experiences a moderate level of healthy deprivation and disability. Loughborough Warwick Way again stands out as the most deprived LSOA in the monitoring area.

Table 2.9: Health Deprivation and Disability

LSOA	District Rank (1 to 100)	County Rank (Ranked 1 to 396)	National Rank (Ranked 1 to 32482)	HEALTH DEPRIVATION AND DISABILITY SCORE
Loughborough Warwick Way	4	6	8333	0.59
Loughborough Thorpe Acre East	7	22	12298	0.27
Loughborough Dishley East	9	27	13183	0.20
Loughborough Rosebery	13	42	15690	0.02
Loughborough Ashby East	19	61	17841	-0.13
Loughborough Ashby West	27	86	18970	-0.21

Living Environment

This Domain focuses on deprivation with respect to the characteristics of the living environment. It comprises two sub-domains: the 'indoors' living environment which measures the quality of housing and the 'outdoors' living environment which contains two measures about air quality and road traffic accidents. On a District, County and National level the Loughborough West monitoring area experiences a moderate level of living environment deprivation.

Table 2.10: Living Environment Deprivation

LSOA	District Rank (1 to 100)	County Rank (Ranked 1 to 396)	National Rank (Ranked 1 to 32482)	LIVING ENVIRONMENT SCORE
Loughborough Rosebery	8	14	7626	32.55
Loughborough Ashby East	15	37	11140	24.96
Loughborough Warwick Way	16	39	11304	24.62
Loughborough Dishley East	17	42	11527	24.17
Loughborough Thorpe Acre East	34	92	16335	16.71
Loughborough Ashby West	42	116	17944	14.74

3: STRONGER COMMUNITIES

Summary

- The area is reasonably equipped in terms of access to education and health facilities
- The northern part of the Loughborough West monitoring area is the most restricted in terms of access to services and amenities
- There are a limited number of grocery stores, post offices, sports facilities and general conveniences in the area

Access to Services

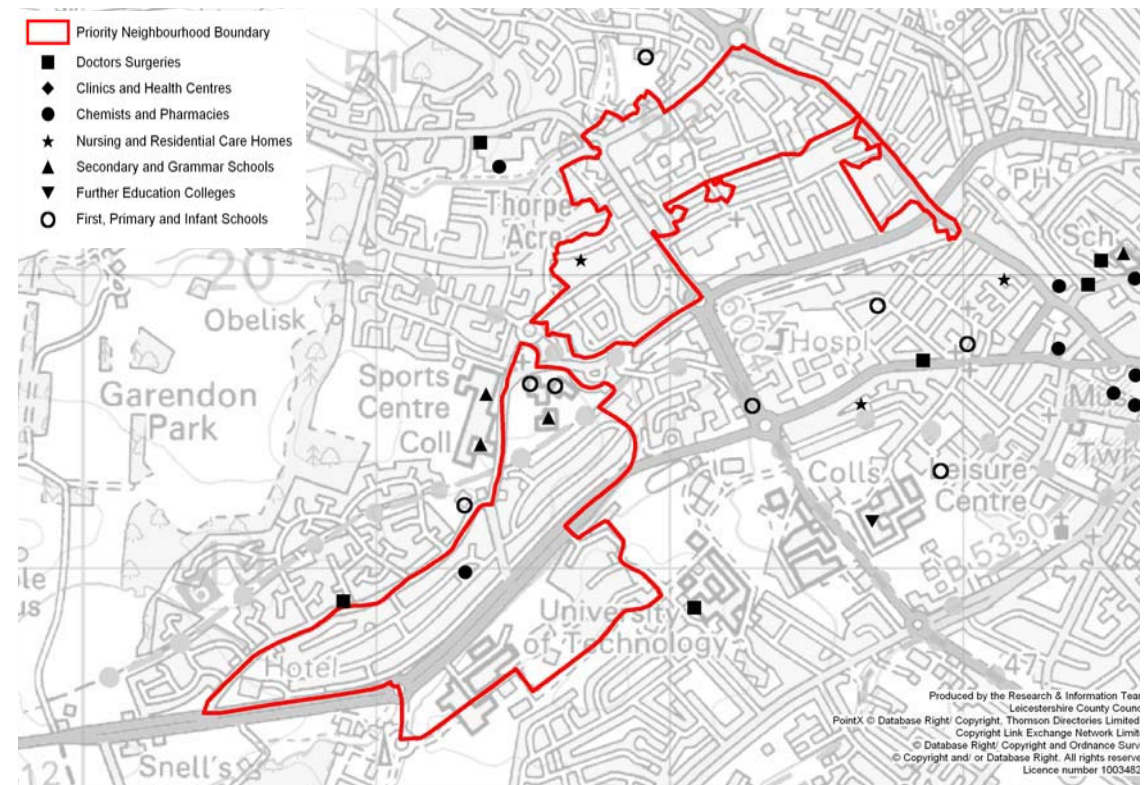
The Loughborough West priority neighbourhood covers an area of approximately 126 hectares and consists of seventeen Output Areas. The location of various amenities within and around the priority neighbourhoods are mapped on the following two pages. Points were mapped using the Pointx National Points of Interest database.

Education and Health Facilities

Map 3.1 (right) depicts Education and Health facilities in and around the Loughborough West Priority Neighbourhood.

There are no health facilities within the actual boundaries of the priority neighbourhood barring a chemists. However there are three doctors surgeries located within 100 metres of the priority areas. One borders the edge of the southern part of the priority neighbourhood, with a second located on the university campus. A third doctors surgery lies a short distance away from the northern part of the priority neighbourhood which also contains a nursing/care home. To access other health facilities residents would have to travel into Loughborough town centre.

The southern part of the priority neighbourhood is reasonably equipped in terms of educational facilities. Within it's boundaries there are two primary schools and a secondary or grammar school, with a further two secondary/grammar schools located a short distance away. However educational facilities in the northern part of the priority neighbourhood are limited with the exception of one primary school meaning that children will have to travel further a field to access their education.



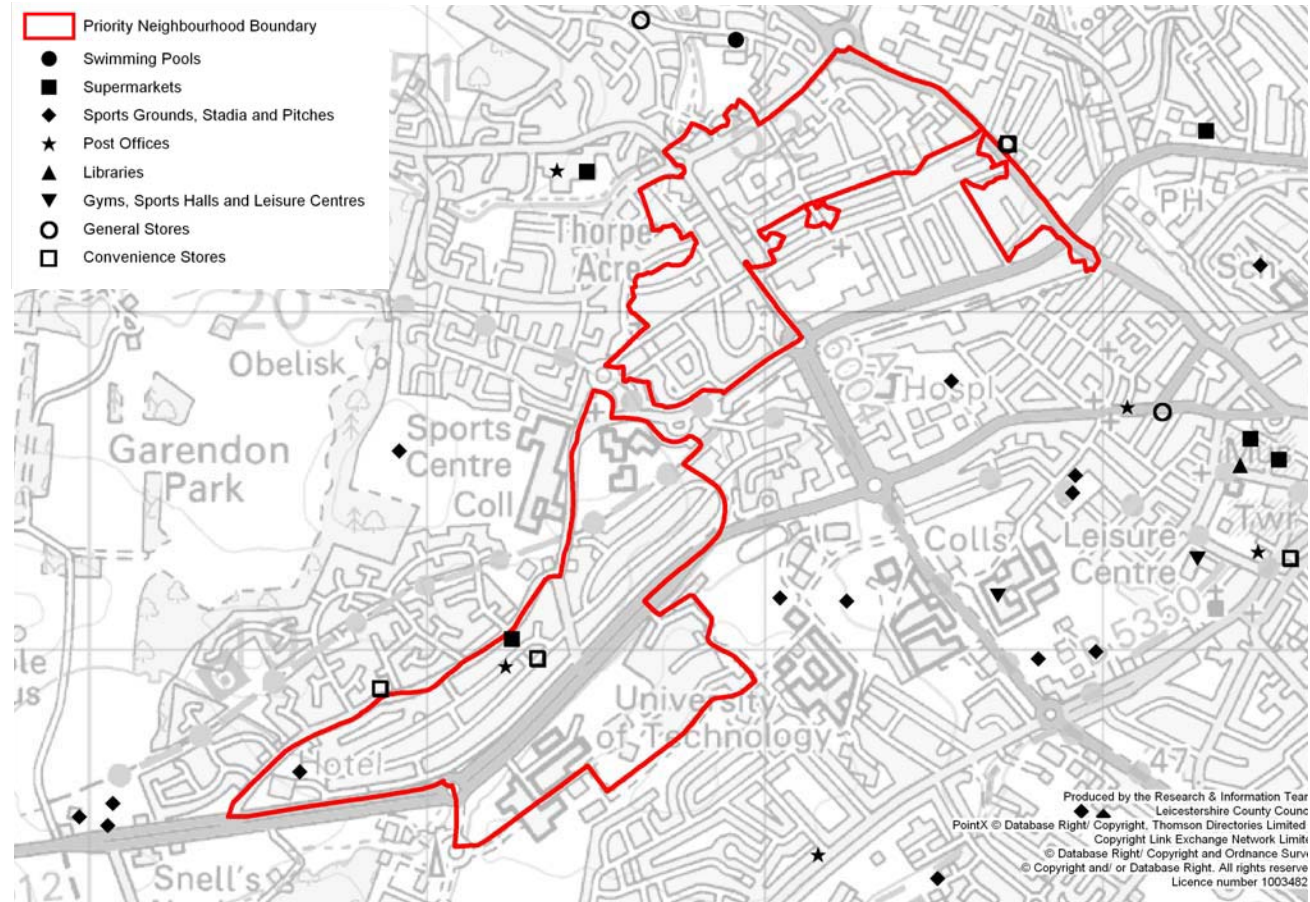
Map 3.1: Education and Health Facilities in Loughborough West

Access to Services

Map 3.2 depicts the location of public convenience services in and around the Loughborough West Priority Neighbourhood. Facilities that are mapped include sports centres, libraries, supermarkets, convenience stores, swimming pools and post offices.

Services and Amenities

As the map illustrates, given its size, there is a noticeable lack of amenities both in and around the immediate vicinity of the Loughborough priority area. This may be a result of the residential character of the area, and the close proximity to Loughborough town centre. This would mean that residents would have to travel into Loughborough for services other than general shopping provisions. The majority of sports facilities such as gyms, swimming pools and sports grounds also appear to be located either in the town centre or in the periphery.



Map 3.2: Public Convenience Services in Loughborough West

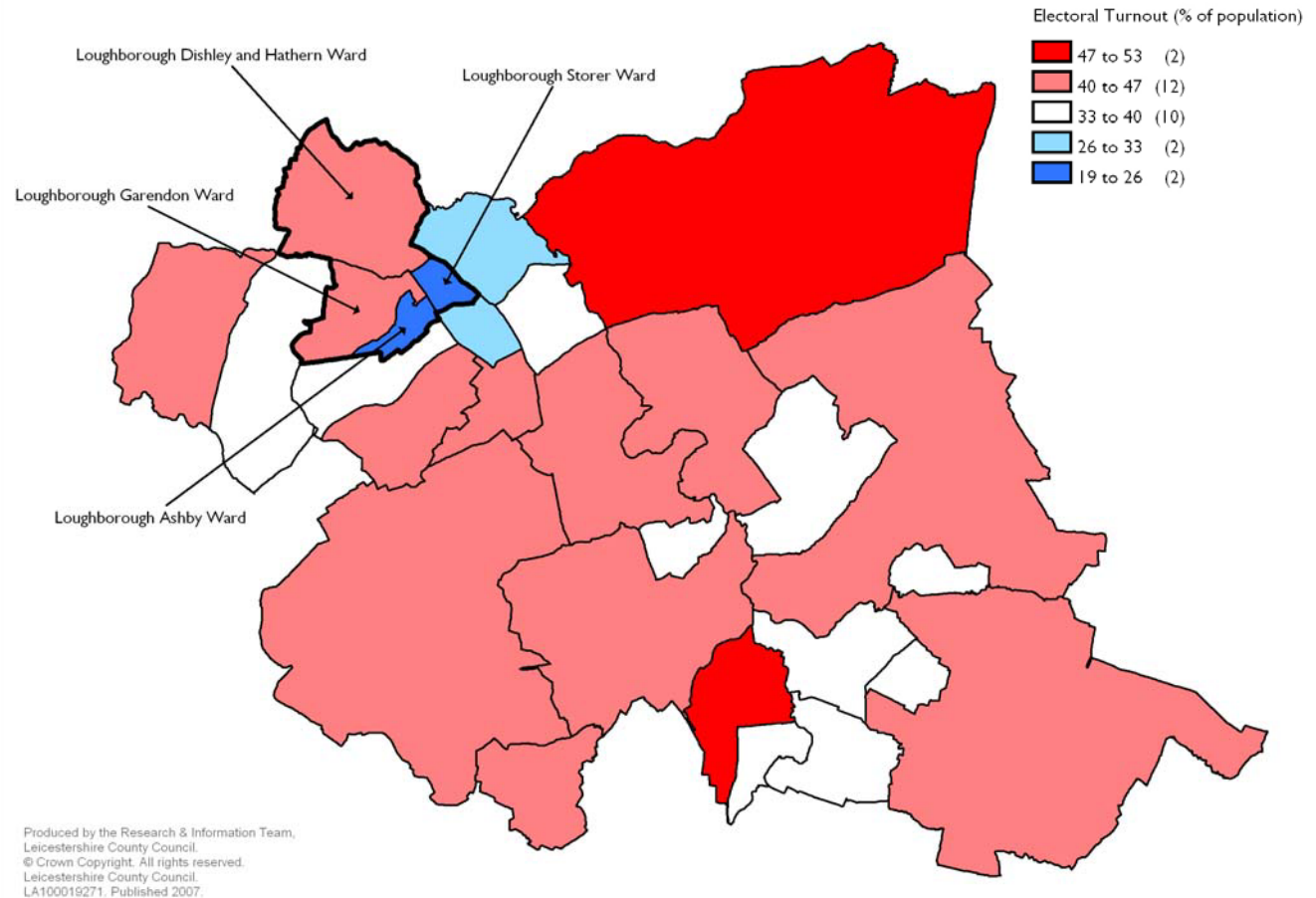
Voting Turnout

Map 3.1 depicts voting turnout for the 2007 Charnwood Borough Council Elections. Areas shaded in dark red depict a high electoral turnout. Areas shaded in dark blue depict a very low voter turnout.

A high voting turnout can be seen as a sign of strong and cohesive communities as it demonstrates that people feel they can have a say in the running of their local community. On average more people vote in General Elections (69%) compared to District Council Elections (52%) or Parish Council Elections (36%).

Two of the wards in and around the Loughborough West monitoring area are seen to have the lowest percentages of voter turnout in the District. In the May 2007 Borough Council elections less than a fifth of the electoral in Loughborough Storer ward voted (19.55%). Similarly, under a quarter of the population in Loughborough Ashby ward voted (24.41%).

There was a greater electoral turnout in Loughborough Dishley and Hathern, and Loughborough Garendon wards. In these wards 42.94% and 43.79% of the population voted.



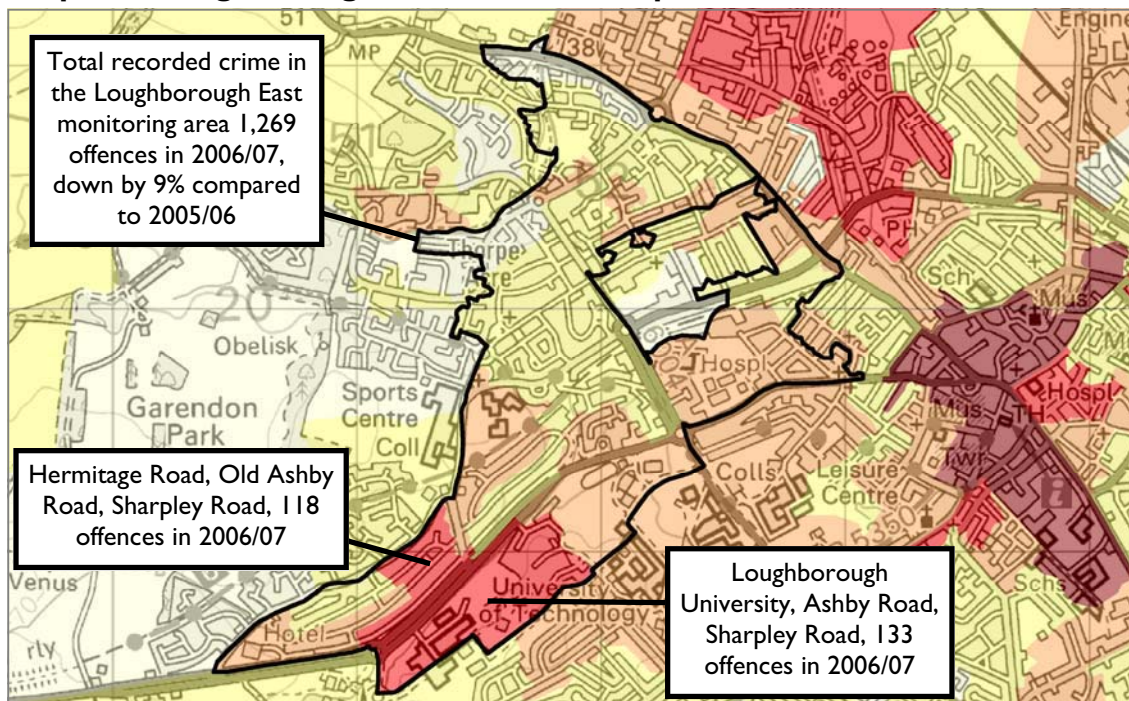
Map 3.1: Voting turnout by ward (May 2007 Charnwood Borough Elections)

4: SAFER COMMUNITIES

Summary

- Violence against the person and burglary dwelling account for one-third of crime in the Loughborough West monitoring area
- Crime in the Loughborough West monitoring area accounts for 9% of all crime in Charnwood Borough
- The total number of recorded offences has decreased by 9% between 2005/06 and 2006/07 in the Loughborough West monitoring area

Map 4.1: Loughborough West Crime Hotspots



Map 4.1 (left) shows the hotspot areas for all crime in and around the Loughborough West monitoring area.

In 2006/07 there was a total of 1,269 recorded offences within the Loughborough West monitoring area, a decrease of 9% compared to the previous year.

The map shows that the level of recorded crime is not consistent within the monitoring area. There are two adjacent areas within the monitoring area which have a high number of recorded offences in 2006/07 (shaded red). These areas include Hermitage Road, Sharpley Road, Old Ashby Road and part of the University Campus (total 118 + 133 offences).

Total recorded crime 2006/07 By Output Area

	320 to 1,130	(3)
	100 to 320	(10)
	50 to 100	(51)
	10 to 50	(274)
	0 to 10	(149)

© Crown copyright. All rights reserved.
Leicestershire County Council. LA100019271. Published 2006.

Loughborough West monitoring area

Note: Figures in brackets are the number of Output Areas falling in each range for the whole of Charnwood Borough

Table 4.1 (right) shows crimes recorded in Loughborough West monitoring area and in Charnwood Borough as a whole for 2006/07, broken down into crime categories. The table is ranked according to the volume of crime recorded in the monitoring area in each category - highest at the top.

Violence against the person is the highest volume crime in both Charnwood Borough and in the Loughborough West monitoring area.

Table 4.1 shows that the overall crime rate in the Loughborough West monitoring area is slightly higher (102.3 per 1,000 population), compared to the crime rate for Charnwood Borough as a whole (88.2 per 1,000).

The most sizable differences in the crime rate for Loughborough West monitoring area compared to Charnwood Borough as a whole is burglary dwelling (more than double - 51.4 compared to 20.0 per 1,000 households). The burglary dwelling offences recorded within Loughborough West monitoring area account for 15% of the burglary dwelling offences recorded in the whole of Charnwood Borough in 2006/07.

Table 4.1 also shows that a considerable proportion of all recorded crime in Charnwood Borough (9%) takes place in the Loughborough West monitoring area.

Table 4.1: Recorded crime in Charnwood Borough compared to Loughborough West monitoring area (2006/07)

	Charnwood Borough		Loughborough West Monitoring Area		% in monitoring area
	no.of crimes	rate per 1,000	no.of crimes	rate per 1,000	
all crime	13,895	88.2	1,269	102.3	9%
violence against the person	2,776	17.6	248	20.0	9%
burglary dwelling*	1,242	20.0	181	51.4	15%
criminal damage	1,824	11.6	179	14.4	10%
damage to motor vehicle	1,129	7.2	141	11.4	12%
theft	1,454	9.2	120	9.7	8%
theft from motor vehicle	1,388	8.8	102	8.2	7%
theft of cycle	504	3.2	86	6.9	17%
burglary other	885	5.6	56	4.5	6%
theft of motor vehicle	524	3.3	46	3.7	9%
fraud and forgery	580	3.7	30	2.4	5%
indecenty	168	1.1	16	1.3	10%
robbery	136	0.9	15	1.2	11%
drugs	274	1.7	14	1.1	5%
theft from person	248	1.6	13	1.0	5%
theft from stores	617	3.9	10	0.8	2%
public order	91	0.6	9	0.7	10%
miscellaneous	55	0.3	3	0.2	5%

Source: Crime Data : Leicestershire Constabulary, CIS.

Denominator data : Leicestershire County Council Mid-Year Estimates 2004

All rates are expressed per thousand population with the exception of burglary dwelling * which is a rate per thousand households

Graph 4.1 (right) shows the crime trends over the last five years in Charnwood Borough and in the Loughborough West monitoring Area for total crime and for selected crime categories.

Over the past five years recorded crime has increased by 10% within Charnwood Borough, compared to a decrease of 6% in the Loughborough West monitoring area.

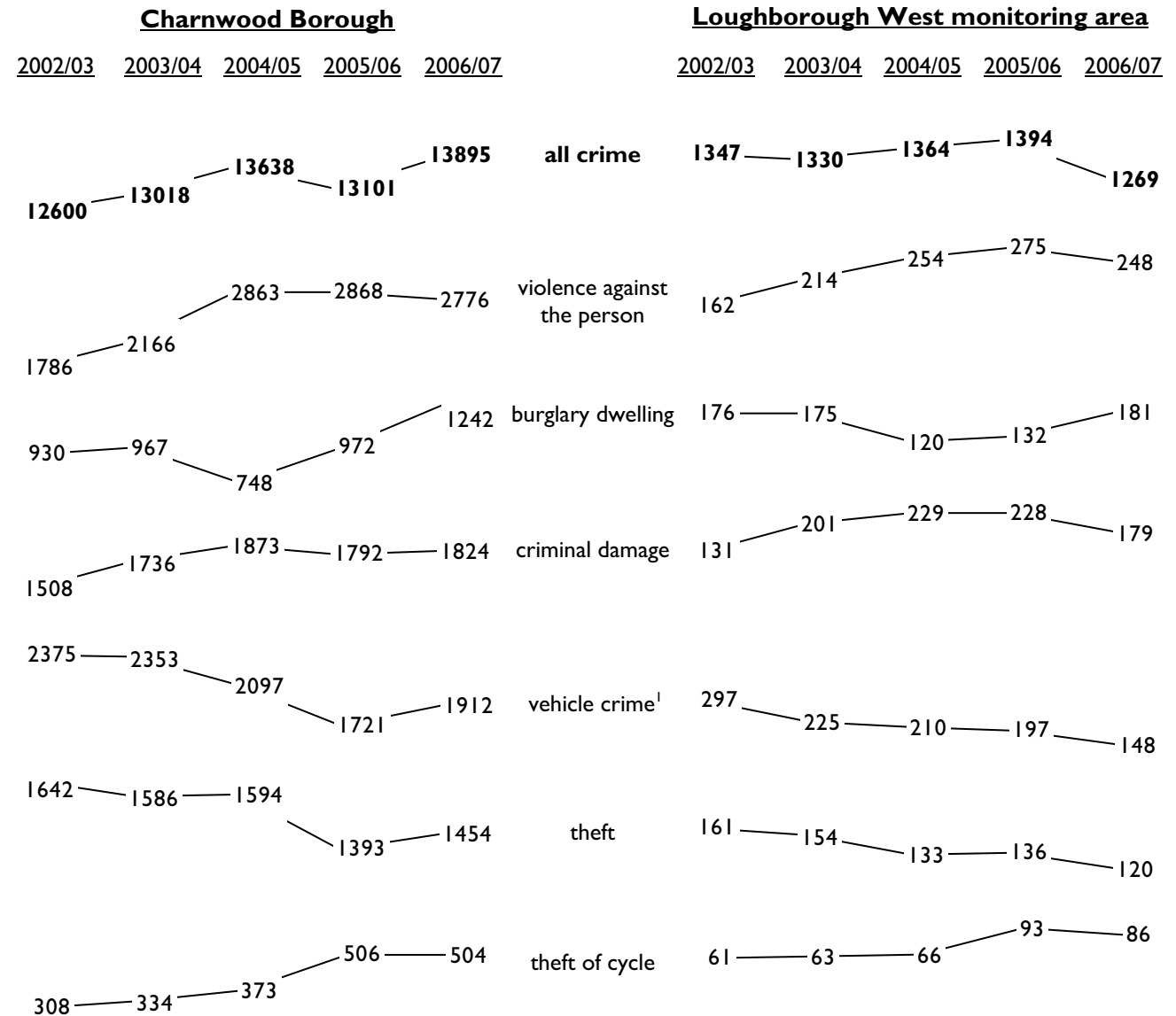
On the whole the trends for most of the individual crime types are similar in Loughborough West monitoring area compared to Charnwood Borough as a whole.

The downward trend in vehicle crime within Loughborough West monitoring area is reflected in the downward trend for the whole Borough, with the exception of 2006/07. Vehicle crime continued to decrease in the monitoring area in 2006/07 but increased within the Borough.

The number of violence against the person offences has increased considerably between 2002/03 and 2004/05 in both the Borough and the monitoring area, and has since level out.

In 2006/07, burglary dwelling in Loughborough West monitoring area is a similar level compared to five years ago. However, within Charnwood Borough recorded burglary dwelling has increased by one-third during the last five years.

Graph 4.1: Recorded crime trends over the last five years in Charnwood Borough and in Loughborough West monitoring area



Source: Crime Data : Leicestershire Constabulary, CIS

Domestic Violence

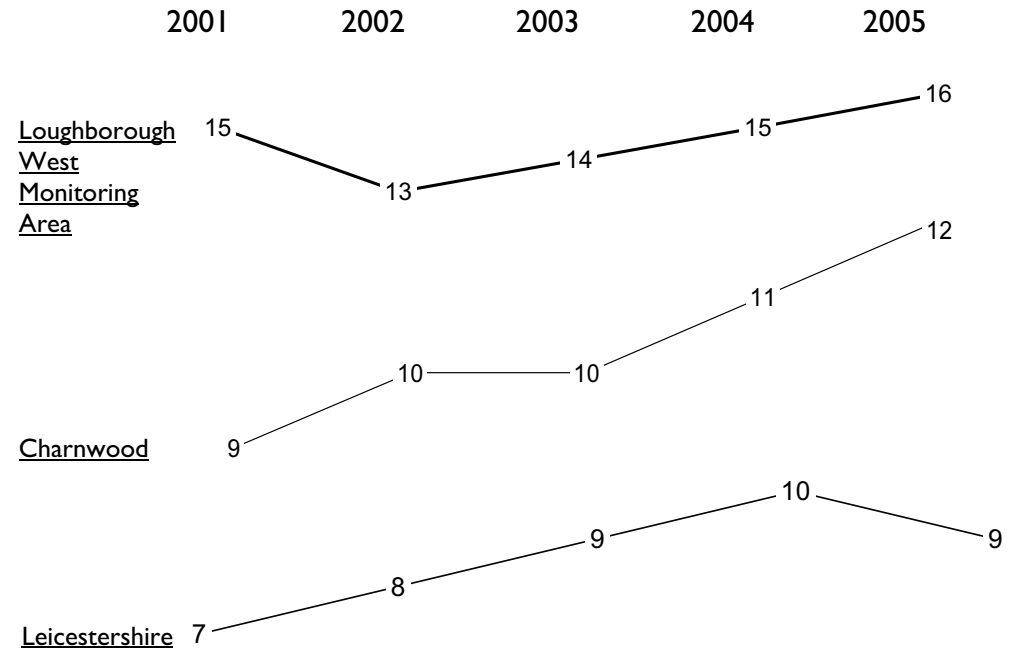
Summary

- **Rates of Domestic Violence are higher in the Loughborough West monitoring area than in the District or County**

Data relating to domestic violence (DV) are recorded by Leicestershire Constabulary on a quarterly basis. DV incidents are those perceived by the attending Police Officers to be of a domestic nature, whether on home premises or elsewhere. DV incidents may not be recorded as crime.

Rates of DV were measured at LSOA level. The Loughborough West monitoring area was found to have high rates of DV in comparison to Charnwood as a whole and Leicestershire County. In 2005 reported incidents were higher than the number reported in the District and County indicating that there is a particular concentration of DV reporting occurring in the Loughborough West monitoring area. Rates of DV reporting in the Loughborough West monitoring area have remained relatively consistent during the five year period. 2001 to 2005. When analysing DV data it is not possible to determine whether changes in rates are related to changes in the number of incidents actually occurring or changes in awareness and reporting of DV. Therefore it is necessary to employ an element of caution when interpreting findings.

Graph 11 depicts trends of recorded DV over a five year period (2001-2005) for the Loughborough West monitoring area, Charnwood and Leicestershire. During this period, rates of DV in Loughborough West have remained higher than rates in the District and the County.



Graph 4.2: Recorded DV trends in the Loughborough West Monitoring Area, Charnwood and Leicestershire County (2001—2005)

5: HEALTHIER COMMUNITIES

Summary

- **Loughborough Storer and Loughborough Ashby wards have the highest estimated percentages of smoking and binge drinking in the whole of Charnwood**
- **Approximately a third of people in Loughborough Ashby and Loughborough Storer are estimated to be current smokers**
- **Loughborough Ashby ward has the lowest estimated adult consumption of fruit and vegetables in the whole of Charnwood**

ESTIMATES OF HEALTHY LIFESTYLE BEHAVIOURS

The Department of Health and Social Care Informatics (2001-2004) commissioned a variety of model-based prevalence estimates and confidence intervals to indicate a range of healthy lifestyle variables at ward level. The outcome measure was generated by combining individual level data collected in the Health Survey for England (HSfE), the 2001 Census and administrative data sets to provide information on the following:

- Smoking for adults (aged 16 years or more)
- Binge drinking for adults (aged 16 years or more)
- Obesity for adults (aged 16 years or more)
- Consumption of five or more fruit and vegetables a day for adults (aged 16 years or more)
- Consumption of three or more fruit and vegetables a day for children (aged 5 to 15 years inclusive)

The synthetic estimates are the expected prevalence of any behaviour for any ward. As information is recorded at ward level it may not always reflect the situation in the priority neighbourhood.

Smoking

Within the wards in and around the Loughborough West monitoring area Loughborough Garendon and Loughborough Dishley and Hathern have the lowest estimated percentage of smoking. In Loughborough Garendon and Loughborough Dishley and Hathern wards approximately a fifth of the population are estimated to be current smokers compared to a third of people in Loughborough Storer and Loughborough Ashby wards. These estimates are the highest out of all the wards in Charnwood. However the confidence intervals are relatively disparate indicating that 95% of the time the expected prevalence of smoking will fall somewhere between approximately 20% and 49%.

Table 5.1: Synthetic Estimates of Smoking

Ward	Estimated Smoking - Percentage of Persons	Estimated Smoking - Lower Confidence Interval	Estimated Smoking - Upper Confidence Interval
Loughborough Garendon	17.8%	10.4%	28.7%
Loughborough Dishley and Hathern	22.2%	13.2%	34.6%
Loughborough Storer	32.6%	20.2%	47.5%
Loughborough Ashby	33.8%	21.2%	48.9%

Binge Drinking

Binge drinking is defined as an adult who had, in the previous week, on their heaviest drinking day, reported to have drunk 8 or more units of alcohol (for men) or 6 or more units of alcohol (for women).

Table 5.2 shows estimates of binge drinking in the wards in and around the Loughborough West monitoring area. Levels of binge drinking are particularly high in Loughborough Ashby and Loughborough Storer wards. These wards are estimated to have the highest levels of binge drinking in the whole of Charnwood. This is likely to be compounded by the high student population living in the area. The estimated prevalence for binge drinking in Loughborough Garendon, Dishley and Hathern, Ashby, and Storer overlaps with confidence intervals for national estimates indicating that the prevalence of binge drinking may be similar to national estimates.

Obesity

Obesity in adults is defined as adults whom in response to the HSfE recorded their BMI as being 30 or above. Synthetic estimates for obesity indicate that just over a fifth of persons in the wards in and around the Loughborough West area are estimated to be obese.

National prevalence of obesity was calculated as a direct estimate from the 2000—2003 HSfE Survey and is therefore not a synthetic estimate.

Comparisons with national estimates show that the prevalence of obesity in Loughborough West may again be on par with national prevalence.

Adult Fruit and Vegetable Consumption

Synthetic estimates of fruit and vegetable consumption was measured by the prevalence of adult respondents to the HSfE who had eaten 5 or more fruit and vegetables on the previous day. Adult fruit and vegetable consumption in the wards in and around the Loughborough West monitoring area is relatively low. Loughborough Ashby ward has the lowest estimated fruit and vegetable consumption out of all the wards in Charnwood. This indicates that few adults living in the area may be consuming the recommended daily allowance of fruit and vegetables.

Table 5.2: Synthetic Estimates of Binge Drinking

Ward	Estimated Binge Drinking - Percentage of Persons	Estimated Binge Drinking - Lower Confidence Interval	Estimated Binge Drinking - Upper Confidence Interval
Loughborough Garendon	14.2%	7.4%	25.6%
Loughborough Dishley and Hathern	16.4%	8.7%	29.1%
Loughborough Ashby	24.6%	13.6%	40.6%
Loughborough Storer	32.0%	18.4%	50.3%

Table 5.3: Synthetic Estimates of Obesity

Ward	Estimated Obesity - Percentage of Persons	Estimated Obesity - Lower Confidence Interval	Estimated Obesity - Upper Confidence Interval
Loughborough Ashby	21.5%	13.9%	30.6%
Loughborough Storer	22.5%	15.3%	31.1%
Loughborough Garendon	23.0%	16.2%	31.3%
Loughborough Dishley and Hathern	23.6%	16.7%	32.1%

Table 5.4: Synthetic Estimates of Adult Fruit and Vegetable Consumption

Ward	Estimated Adult Consumption of Fruit and Veg - % of Persons	Estimated Adult Consumption of Fruit and Veg - Lower Confidence Interval	Estimated Adult Consumption of Fruit and Veg - Upper Confidence Interval
Loughborough Ashby	17.5%	9.5%	29.8%
Loughborough Dishley and Hathern	21.7%	12.3%	35.2%
Loughborough Storer	21.7%	12.3%	35.6%
Loughborough Garendon	24.6%	14.1%	38.9%

Child Fruit and Vegetable Consumption

Synthetic estimates of child fruit and vegetable consumption were measured by the prevalence of child respondents to the HSfE who had eaten 3 or more fruit and vegetables on the previous day. Confidence intervals for the wards in and around Loughborough West overlap with National Confidence intervals for this measure therefore we might expect prevalence of child fruit and vegetable consumption to be similar to national estimates. Overall approximately 38 to 50% of children in Loughborough Dishley and Hathern, Garandon, Storer and Ashby wards are estimated to be eating the recommended 3 fruit or vegetables per day. This is a relatively high percentage in comparison to other wards in Charnwood.

Table 5.5: Synthetic Estimates of Child Fruit and Vegetable Consumption

Ward	Estimated Child Consumption of Fruit and Veg - % of Persons	Estimated Child Consumption of Fruit and Veg - Lower Confidence Interval	Estimated Child Consumption of Fruit and Veg - Upper Confidence Interval
Loughborough Dishley and Hathern	37.6%	20.4%	58.8%
Loughborough Garandon	39.8%	21.9%	61.0%
Loughborough Storer	43.7%	24.9%	65.1%
Loughborough Ashby	49.4%	29.3%	70.0%

6: OLDER PEOPLE

Summary

- Older people represent a minority 11% of the population in the Loughborough West monitoring area
- The largest proportion of older people are in the 65 to 74 age range

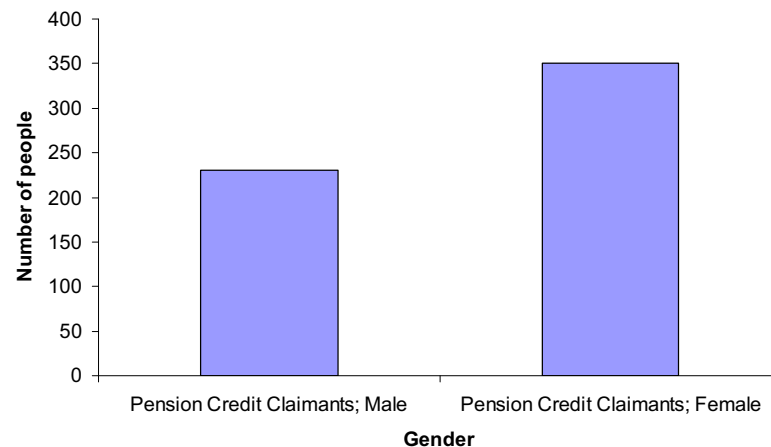
The age structure of older people living in the Loughborough West monitoring area was examined using the 2001 Census of Population data. In 2001 there were a total of 1169 persons over the age of 60 living in the LSOAs in the monitoring area. This represents 11% of the population which is a lot smaller than Borough proportions of 19.5% due to the large student population living in the area. The largest proportion of older people were aged 65 to 74 (43%) or 75 to 84 (25%). A minority (9%) were aged 85 or over.

Data on Pensions Credit and State Pension was downloaded from the DWP website. Data is currently only available for August 2006 in anticipation of a full complement of back-dated time series of quarterly data for these benefits. Persons claiming a state pension in the Loughborough West monitoring area account for a minority (5%) of claimants in the whole of Charnwood. Unsurprisingly the percentage of female claimants (63%) outweighs male claimants, this will in part be attributable to women having a longer life expectancy.

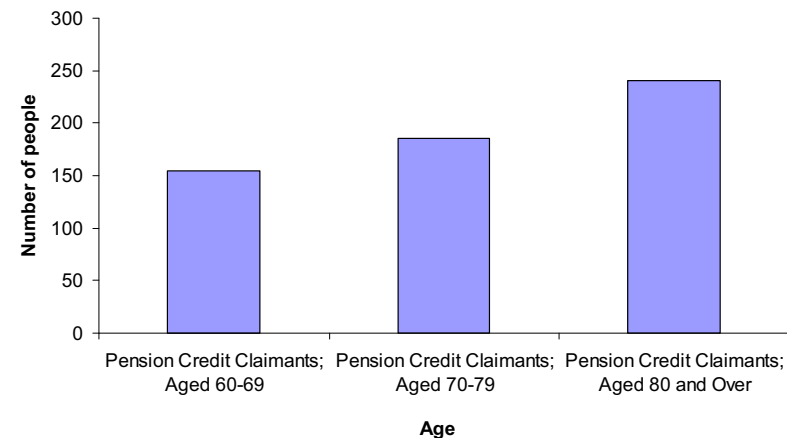
Pensions credit is a benefit allocated to persons over the age of 60 to ensure that they receive a minimum weekly allowance. In August 2006 a total of 580 persons were receiving this benefit in the Loughborough West monitoring area. The majority of claimants (60%) were female. Graph 6.2 shows the number of persons claiming pension credit according to age.

Disability living allowance is a tax-free benefit allocated to adults who need help with personal care or have walking difficulties because they are physically or mentally disabled. In August 2006 just over a third (34%) of persons claiming disability living allowance in the Loughborough West monitoring area were aged 60 or over.

Graph 6.1: Number of Persons Claiming Pension Credit by Gender



Graph 6.2: Number of Persons Claiming Pension Credit by Age



7: ECONOMIC DEVELOPMENT

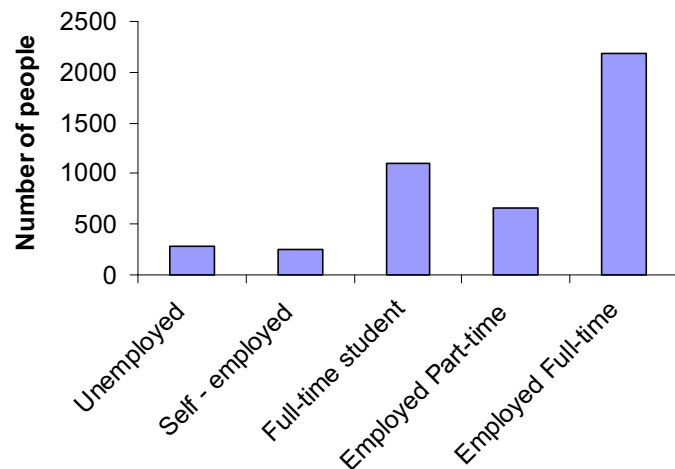
- There are **9909** people (**81%** of the population) of working age living in the Loughborough West monitoring area
- Only **45%** of the working age population are economically active due to the large proportion of students living in the area
- The majority of income support claimants are female (**65%**)

Employment

According to the 2001 Census of Population the majority (81%) of people living in the Loughborough West monitoring area are of employment age (16-74). There is a slightly higher than average proportion of people in the 16 to 74 age group which is attributable to the large number of University students living in the area. Hence only 45% of people living in the area are recorded as being economically active. Economic activity is defined as persons who are earning in some sort of way, either through full or part time work, self employed or unemployed but seeking work. As expected, there is a higher than average proportion of the population recorded as being full time students. Graph 7.1 shows that the majority of economically active people are employed full time.

CAI data no longer available

Graph 7.1: Economic Activity—Working age residents aged 16-74



Source: Census of Population 2001

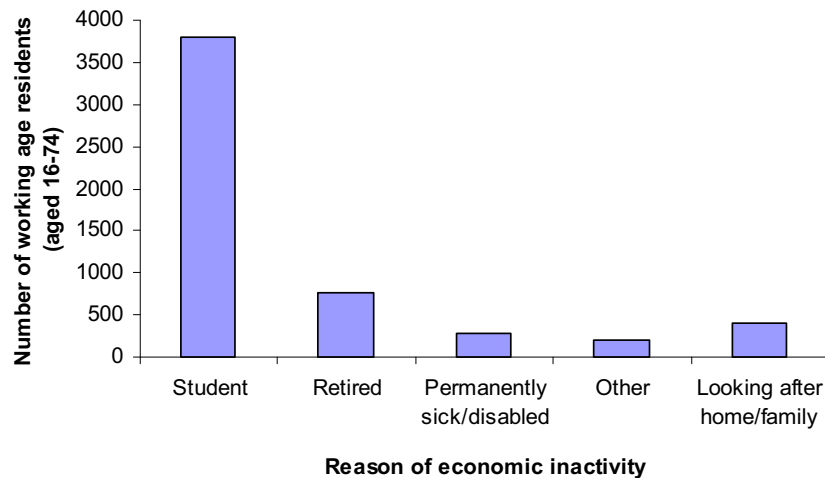
Results of the Annual Business Inquiry (2005) were analysed to identify industries of employment within the Loughborough West monitoring area. Public administration, education and health dominate the market due to the University campus being located within the monitoring area, three quarters of businesses are classed under this heading. Other large employment sectors are distribution, hotels and restaurants (13.6%).

Results of the 2001 Census of Population showed the largest occupation sectors of actual residents in the Loughborough West monitoring area to be Elementary Occupations (26%), skilled trades (11.6%) and process plant and machine operatives (11.4%) indicating that many residents may work in other areas.

Unemployment and Benefits

The 2001 Census of population showed that over half (55%) of people of employment age (16-74) living in the Loughborough West monitoring area are economically inactive. This is defined by people who are not looking for, or not available for work. Graph 7.2 shows the largest proportion of the economically inactive are students.

Graph 7.2: Economically Inactive– number of working age residents aged 16-74



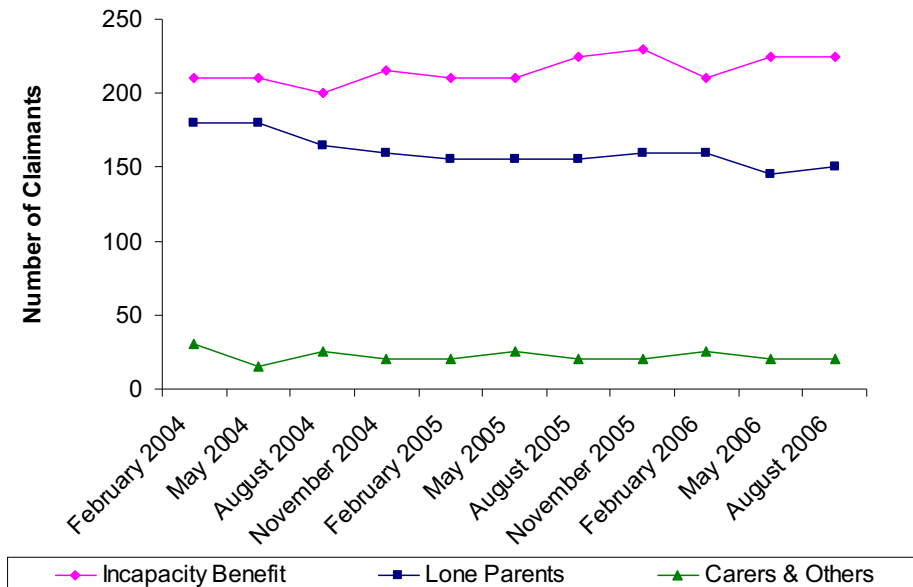
Source: Census of Population 2001

Income support

Income support (IS) is a non-contributory benefit paid to people who have low incomes and who are not required to be available for employment. The main types of people receiving IS are pensioners, lone parents, the long and short-term sick, people with disabilities and other special groups.

The Department for Work and Pensions (DWP) provide a snapshot of benefit claimants at particular points in time. High concentrations of income support claimants live in the Loughborough West monitoring area in comparison to elsewhere in the district. Within the monitoring area claimant rates are particularly high in Ashby East, Warwick Way and Ashby West LSOAs. Loughborough Warwick Way LSOA has a particularly high number of carers and others claiming income support compared to the other LSOAs in the monitoring area. The distribution of income support benefit within the monitoring area is depicted in Graph 7.3. Incapacity benefit is seen to account for over half of all benefit claims made in the monitoring area.

Graph 7.3: Income support claims made in the Loughborough West monitoring area (Feb 2004 - Aug 2006)

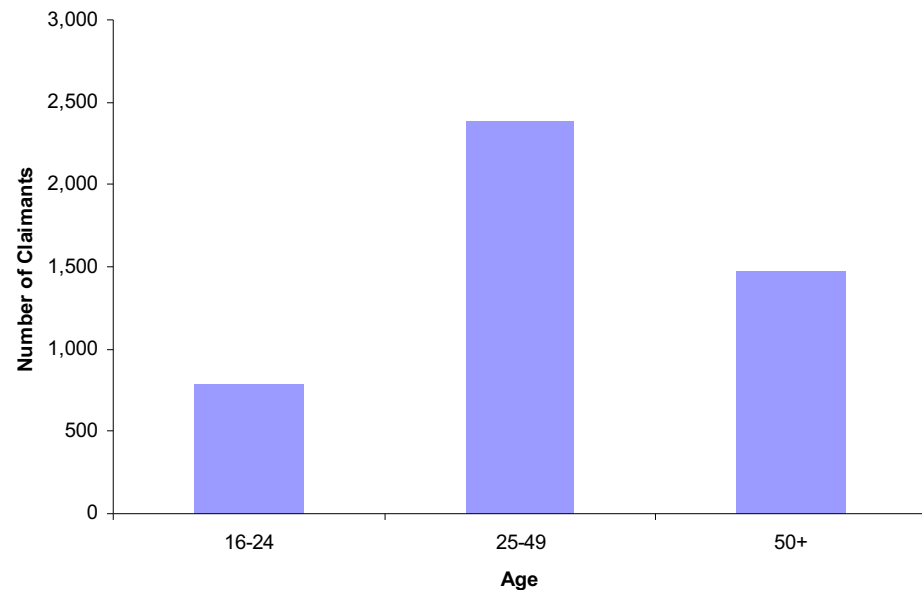


Source: Nomisweb National Statistics 2006

Benefit Claimants

It is possible to analyse the demographics of IS claimants in the Loughborough West monitoring area using data provided by the DWP. Female IS claimants make up nearly two thirds of total benefit claimants (65%). This is probably attributable to a greater number of women taking on the role of lone parent or carer. Analysis of IS by age shows that the largest proportion of claimants are in the 25-49 age group.

Graph 7.4: Average Age of Benefit Claimants 2005/2006



Source: Department of Work and Pensions 2006

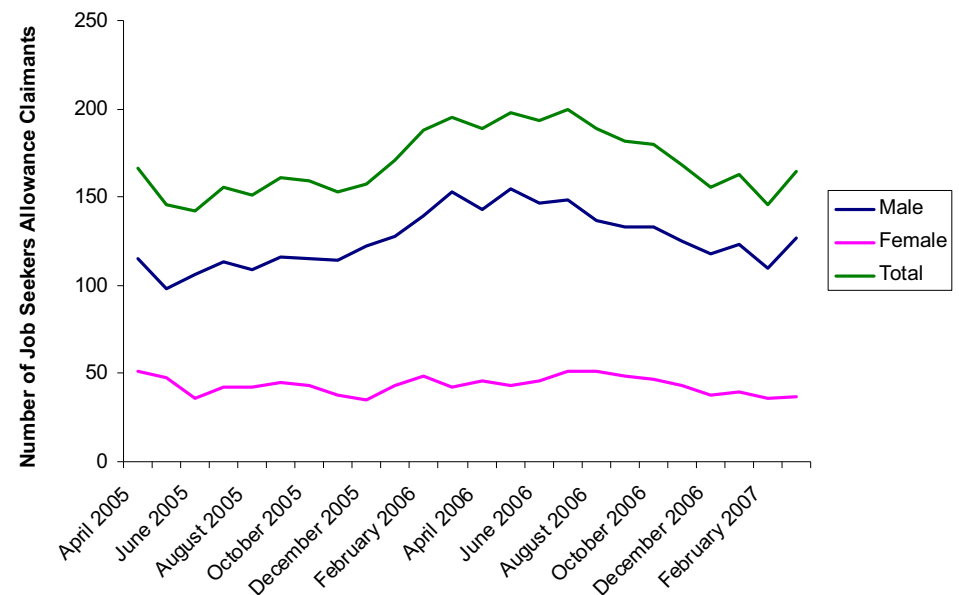
Job Seekers Allowance Claimants

Job Seekers Allowance (JSA) is payable to people under pensionable age who are available for, and actively seeking, work of at least 40 hours per week. Graph 7.5 shows a time-series analysis of the numbers of people claiming job seekers allowance in the LSOAs in the Loughborough West

monitoring area throughout the period April 2005 to March 2007. Persons claiming JSA represent 1.7% of the working age population in the Loughborough West monitoring area. There are three times as many male JSA claimants in the area than women. This is partly because only one partner, normally the man, claims income-based JSA on behalf of couples.

Overall there has been a degree of fluctuation in JSA claimants over the two year period. JSA claimant rates reached a high in July 2006. Changes in rates appear to be mainly attributable to more males registering for the benefit. Rates of women claiming JSA has remained relatively consistent throughout the two year period.

Graph 7.5: Change in numbers of JSA claimants (April 2005 - March 2007)



Source: Department of Work and Pensions 2006

8: CLEANER AND GREENER

Summary

- The most popular mode of transport used to get to work by both resident and workplace populations is private car or van
- A high percentage of persons in Garendon and Dishley and Hathern wards work from home
- Storer and Ashby wards have a higher proportion of resident population travelling to work by public transport or bicycle

Travel to work

The following information provides travel to work data for people between the ages of 16 to 74 in employment who live in Charnwood (resident population) as well as those that work inside the district (workplace population). Travel to work data was recorded in the 2001 Census of Population and provides a great opportunity to find out and understand more about where and how the economically active population go to work. This data is only available at ward level (and in some instances district level) therefore it is only possible to apply the data to the Loughborough West monitoring area in general terms based on findings from the wards in and around the monitoring area.

Table 8.1: Travel to work mode for the workplace population

Ward	Workplace population aged 16 - 74	% Car or van	% Home working	% Public Transport	% Bicycle	% On foot	% Other
Loughborough Garendon	564	43	43	3	4	6	2
Loughborough Dishley and Hathern	926	50	26	2	4	16	2
Loughborough Storer	1,355	62	10	6	5	13	3
Loughborough Ashby	3,638	64	3	5	8	18	1

Table 8.2: Travel to work mode for the resident population

Ward	Residents in employment aged 16 - 74	% Car or van	% Home working	% Public Transport	% Bicycle	% On foot	% Other
Loughborough Storer	1,991	53	7	7	8	24	1
Loughborough Ashby	1,962	53	6	10	9	20	2
Loughborough Dishley and Hathern	3,124	70	8	7	6	8	2
Loughborough Garendon	3,186	70	8	6	6	9	2

Travel to work by mode

The various modes of transport used by the resident population to get to work were compared to those used by the workplace population to get to work. The most popular mode of transport for both resident and workplace populations is private car or van. A large proportion of the workplace population in Garendon and Dishley and Hathern wards work from home (43% and 26% respectively) whilst Storer ward has the second highest percentage of workplace population travelling to work 'by foot' in the whole of the District.

The second most popular method of travelling to work for the resident population is 'by foot'. The percentage of resident population travelling to work 'on foot' is higher in Storer and Ashby wards which also have a higher proportion of resident population travelling to work by public transport or bicycle. The tables to the left show the method of travel to work for resident and workplace populations in the wards in and around the Loughborough West monitoring area.

Source: Census Workplace Table 2001

Information on this page is taken from the '2001 Census Travel to Work Data, Charnwood Borough Profile' published February 2006

Workplace destination of Charnwood Resident Population

The most popular workplace destination of the resident population living in Charnwood and working outside the borough is Leicester, accounting for 51.1% of work travel outflow. The majority of Charnwood residents working within the borough are employed in routine and manual occupational groups (41%). A higher proportion of those that travel outside the borough to work are employed in managerial and professional occupations.

Ward Commuting Balance

Table 8.3 shows the balance of commuting in the wards in and around the Loughborough West monitoring area. Garendon ward and Dishley and Hathern ward have a particularly high number of people travelling out of the area to work. This may be because they are located furthest away from employment opportunities. Garendon ward has the highest net outflow of people in the whole of the District. Ashby ward has the third largest net inflow of people travelling to work which will be attributable to the University campus being located within its boundaries.

Self Containment of Wards

Table 8.4 shows the self containment within wards and the District as a whole. Self containment is defined as the proportion of people who live and work within the same area. In Charnwood, Garendon and Storer wards are the least contained in terms of ward but amongst the most contained in terms of district. This indicates that although the majority of persons do not work in direct proximity to where they live, they do work within the District. A relatively high percentage of people living in Ashby ward do travel out of Charnwood to work in other Districts.

Table 8.3: Commuting balance

Ward	No. of people travelling into ward	No. of people travelling out of ward	Net flow
Loughborough Garendon	151	2,845	-2,694
Loughborough Dishley and Hathern	400	2,652	-2,252
Loughborough Storer	1,009	1,700	-691
Loughborough Ashby	3,233	1,651	1,582

Table 8.4: Self containment of Charnwood wards

Ward	Employed Residents	% Work in Charnwood	% Work in ward	% Work outside Charnwood
Loughborough Garendon	3248	71	12	29
Loughborough Storer	1995	72	15	29
Loughborough Outwoods	2412	68	16	32
Mountsorrel	3559	51	16	49
Birstall Wanlip	2440	33	16	68
Loughborough Shelthorpe	2825	71	17	29
Loughborough Dishley and Hathern	3176	70	17	30
Loughborough Nanpantan	2238	66	19	34
Syston East	3006	51	20	49
East Goscote	1614	47	20	53
Loughborough Hastings	2258	75	21	25
Loughborough Ashby	2082	58	21	42
Rothley and Thurstaston	3019	42	22	58
Birstall Watermead	3240	38	22	63
Shepshed West	3321	67	24	34
Shepshed East	3549	64	24	36
Sileby	3304	62	24	38
Syston West	3091	42	24	59
Quorn and Mountsorrel Castle	3038	60	25	40
Queniborough	1466	46	25	54
Anstey	2942	36	25	64
Loughborough Southfields	2119	67	26	33
Barrow and Sileby West	2915	63	26	37
Wreake Villages	1429	49	27	51
Thurmaston	4418	39	27	62
Forest Bradgate	1395	53	28	47
The Wolds	1394	60	32	40
Loughborough Lemyngton	2580	73	40	27

Fixed Penalty Notices

There are currently a number of Street Wardens employed by Charnwood Borough Council to patrol areas within Loughborough. Warden Staff act as “eyes and ears” on the ground to identify problems such as graffiti, dog fouling, litter, fly tipping etc. This work is followed up with the perpetrators by Environmental Crime officers who issue “on the spot fines” or fixed penalty notices. The Fixed Penalty Notices can be issued for enviro-crimes that not only negatively affect neighbourhoods but can attract anti-social behaviour and other factors which can blight communities.

In Loughborough as a whole there were 91 offences recorded between November 2006 and June 2007. Offences were recorded by ward. Of the wards in and around the Loughborough West Priority Neighbourhood fixed penalty notices were issued in Loughborough Storer ward only. Fixed penalty notices issued in this ward accounted for the largest proportion of fixed penalty notices issued in the whole of Loughborough (37%). The majority of fines were issued for littering (94%) whilst a minority were issued for incorrect use of waste receptacles and putting waste out (6%).

9: CHILDREN AND YOUNG PEOPLE

Summary

- **Key stage achievement falls below district and county levels and below the floor targets set for the county**
- **20% less children achieve A* to C grades at GCSE than in the District or the County**

Attainment Levels

In the Loughborough West monitoring area there are currently 1,158 pupils attending a Leicestershire maintained school (Local Education Authority 2006). During a child's school career there are four 'Key Stages' (KS) set by the government which a child must achieve. The percentage of children achieving the headline level for each of the core subjects is recorded by the LEA and is described in the tables to the right in terms of attainment within the Loughborough West monitoring area for KS to KS4. Data is provided for the school year 2005 –2006 and relates to children attending a Leicestershire maintained school.

Leicestershire's floor targets for 2006 are:

- **KS2 English**, 83% achieve level 4 or above
- **KS2 Mathematics**, 81% achieve level 4 or above
- **KS3 English** 82% achieve level 5 or above
- **KS3 Mathematics** 83% achieve level 5 or above
- **KS3 Science** 83% achieve level 5 or above
- **KS4 GCSE**, 62% achieve 5 or more grades A*- C

Educational achievement in the Loughborough West monitoring area is relatively low. The tables to the right show that achievement is below the District and County at all key stages as well as falling well below floor targets for the County for 2006. Attainment in English is particularly poor whilst achievement in Science is seen to fall during the transition from Primary to Secondary education.

Table 9.3 depicts the percentage of children achieving five or more A* to C grades at GCSE, or A to G grades at GCSE. There are approximately

20% less children in the Loughborough West monitoring area achieving A* to C grades than in Charnwood or the County. Just over a third (36%) achieve A* to C grades in comparison to over half for Charnwood and Leicestershire (55% and 58% respectively). Figures for the percentage of children achieving grades A* to C fall approximately 26% percent short of the target set for the county.

Table 9.1: Key Stage 2 % attaining 4+ (2005/06)

Area	English	Maths	Science
Loughborough West	64%	67%	83%
Charnwood District	90%	91%	94%
Leicestershire	82%	76%	89%

Table 9.2: Key Stage 3 % attaining 5+ (2005/06)

Area	English	Maths	Science
Loughborough West	69%	72%	70%
Charnwood District	81%	84%	81%
Leicestershire	83%	85%	83%

Table 9.3: Key Stage 4 % attaining GCSE and Equivalent (2005/06)

Area	% 5+ A-C	% 5+ A-G
Loughborough West	36%	79%
Charnwood District	55%	91%
Leicestershire	58%	91%

School Exclusions

Summary

- **5.4% of pupils living in the Loughborough West monitoring area were excluded from school during 2005/06 which represents twice as many exclusions than for the District or the County**

Numbers of pupils living in the Loughborough West monitoring area who had been excluded from Local Education Authority (LEA) controlled schools during April 2005– April 2006 were recorded and compared with district and county percentages. In total 63 Pupils (5.4% of the LEA school population in Loughborough West) were excluded from school for an amount of time during this period. This is higher than pupil exclusion rates for Charnwood District (3%) and Leicestershire (2.7%). Of those who were excluded the majority were male (60%) and White British (92%).

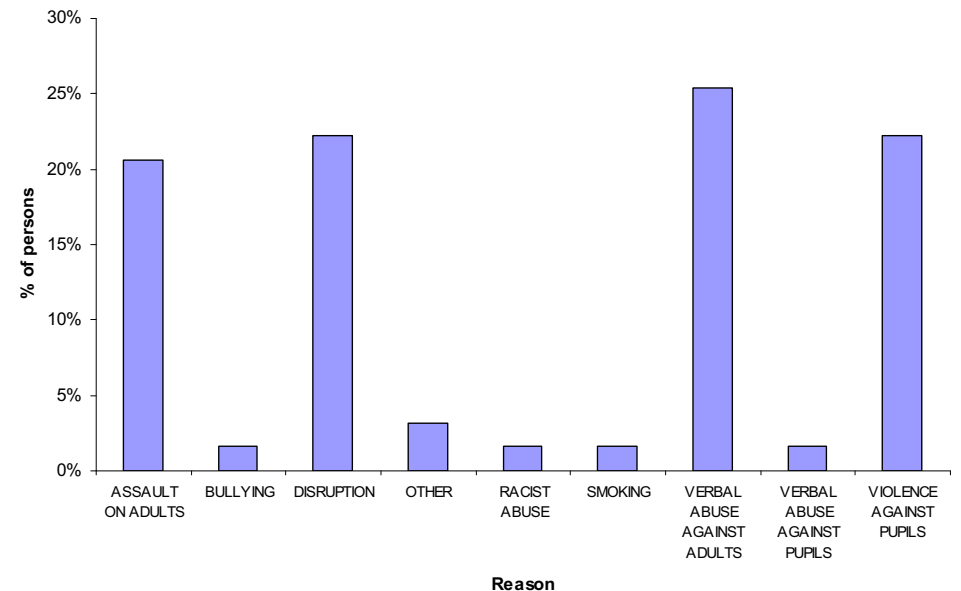
The predominant reason for pupils being excluded from schools in the Loughborough West monitoring area was verbal abuse against adults (25%), other reasons are shown in Graph 9.1. Average number of days out of school as a consequence of being excluded was calculated to be approximately 3.5 (per excluded pupil) for the previous term. Postcode areas which contain a pupil expulsion are depicted to the left and were mapped using codepoint. The map does not represent individual cases. Postcode areas identified wholly or partly lie within the Loughborough West monitoring area.

Map 9.1: Postcode areas containing a pupil expulsion



Source: LEA School Exclusions

Graph 9.1: Reasons for school exclusions in postcode areas wholly or partly lying in the Loughborough West monitoring area



Source: LEA School Exclusions

Children in Care

Summary

- **Between April and October 2006, 16% of children referred to Children's Social Care in Charnwood were living in the Loughborough West monitoring area**
- **Rates of teenage pregnancies in the wards in and around Loughborough West are relatively high, however the area is not considered a "hotspot" for under 18 conceptions**

Details on Looked After Children (children in care) are recorded by Children's Social Care (CSC). Looked after children can be referred to CSC by a variety of sources e.g. the police, health professionals, the LEA, Connexions, Sure Start, parents, carers, relatives, friends or the child themselves. Children are referred for reasons pertaining to their personal well being i.e. family dysfunction, disability (of child or parent), abuse or neglect, parental illness, or absent parenting.

Within Charnwood as a whole there were 766 children referred to CSC between April and October (2006). Nearly 16% of these children were living within the Loughborough West monitoring area when they were referred. The majority of children were referred by a parent (20%), the police (14%), a health professional (13%), or the person referred him/herself (12%). A minority (6%) of children were referred because of a disability or parental illness or disability.

Teenage Pregnancy Rates

Under 18 conception rates are recorded at ward level by the Teenage Pregnancy Unit at Leicestershire County Council and are recorded per 1000 females aged 15-17. Wards are considered to be 'hotspots' if they have a rate of 54.5 conceptions and above. None of the wards in and around the Loughborough West monitoring area are considered a 'hotspot' for teenage pregnancies however rates in Ashby, Dishley and Hathern and Storer are very high.

Wild Card Uptake

'Wild Cards' are Charnwood Leisure Passes that entitle members to enjoy reduced charges at major attractions, local leisure centres, sports clubs and shops in and around Charnwood all year round. The card can also be used at national attractions whilst on holiday in the UK. The wild card is available for 5 to 16 year olds as well as people with disabilities. Charnwood Borough Council recorded the number of students with Wild Cards and attending local schools, 6% of all Wild Card users were found to attend Schools in wards in and around the Loughborough West Priority Neighbourhood.

GLOSSARY

ABI	Annual Business Inquiry
BME	Black and Minority Ethnic
CSC	Children's Social Care
DV	Domestic Violence
DWP	Department for Work and Pensions
HPI	Health Poverty Index
HSfE	Health Survey for England
ID2004	Indices of Deprivation 2004
IDAC	Income Deprivation Affecting Children
IDAOP	Income Deprivation Affecting Older People
IMD	Indices of Multiple Deprivation
JSA	Job Seekers Allowance

KS2	Key Stage 2
KS3	Key Stage 3
KS4	Key Stage 4
LCC	Leicestershire County Council
LEA	Local Education Authority
LSORA	Leicestershire Online Research Atlas
OA	Output Area
ODPM	Office of the Deputy Prime Minister
ONS	Office for National Statistics
PCT	Primary Care Trust
SSD	Social Services Department
LSOA	Lower Super Output Area

REFERENCES**EMPHO**

Leicestershire Research and Statistics Online
 Office of the Deputy Prime Minister
 Office for National Statistics
 Department for Work and Pensions

www.empho.org.uk
[Www.lsr-online.org](http://www.lsr-online.org)
www.odpm.gov.uk
www.ons.gov.uk
www.dwp.gov.uk

OTHER RELATED / USEFUL INFORMATION

Census profiles (ward, parish and district)
 Economic Information
 Leicestershire Research and Statistics Online
 Crime Audits (district level)
 Indices of Deprivation 2004 (district level)

www.leics.gov.uk/statistics
www.lsint.info
www.lsr-online.org
www.leics.gov.uk/statistics
www.leics.gov.uk/statistics

If the information contained in this publication is required in another version, e.g. Braille, large type, tape or an alternative language, please call 0116 305 7257 or email rgsutton@leics.gov.uk



Leicestershire County Council
Chief Executive's Department
County Hall, Glenfield, Leicestershire LE3 8RA

Further details available on the web:
www.leics.gov.uk/statistics