

# Claybrooke Magna and Claybrooke Parva

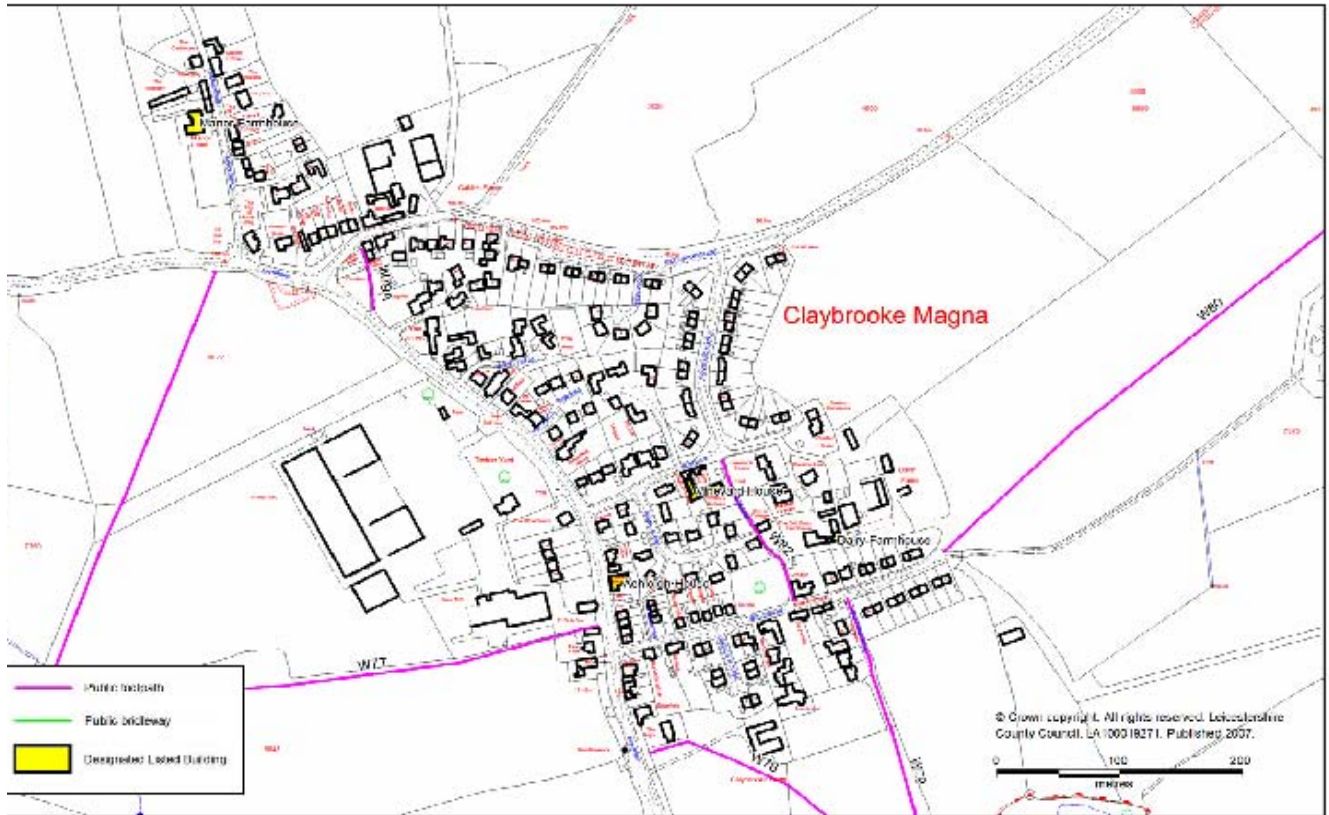


## Parish Plan

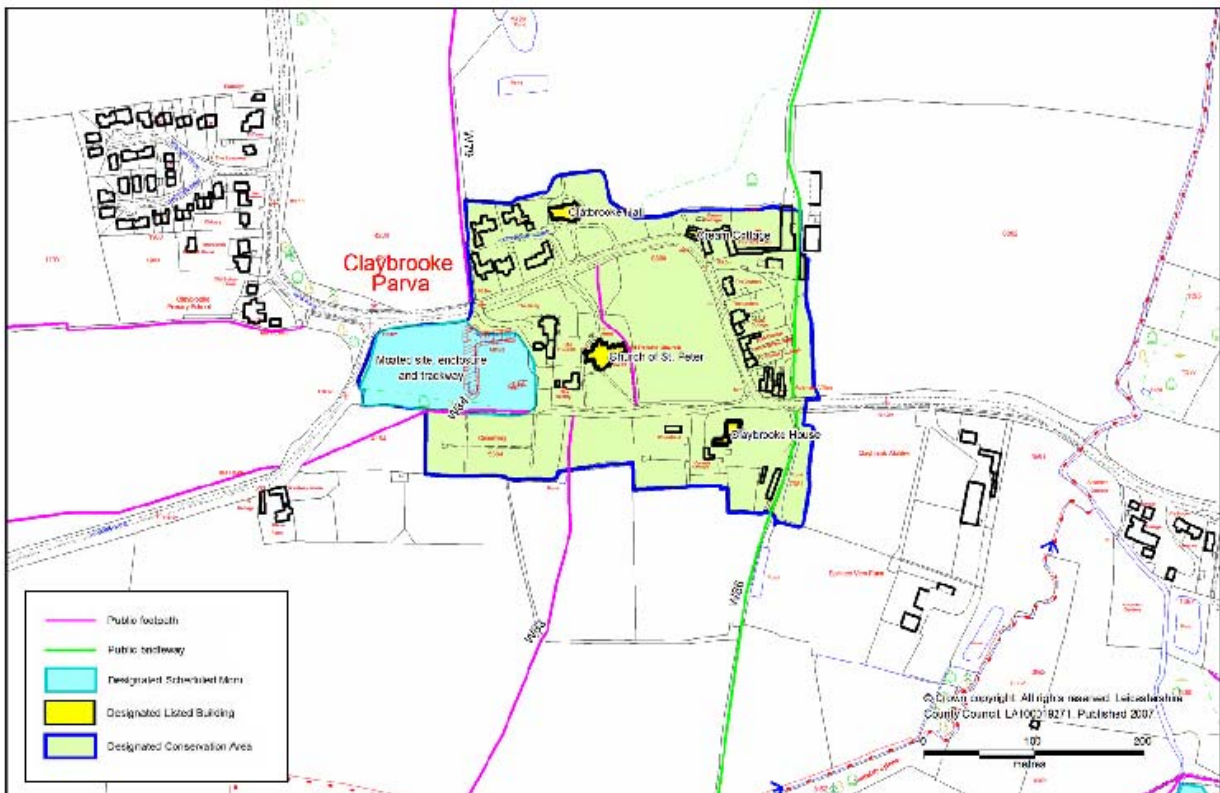
# Claybrooke Magna and Parva Parish Plan

<b><u>Contents</u></b>	<b><u>Page Numbers</u></b>
Maps of Claybrooke Magna and Parva	3
Introduction	4
Summary of Questionnaire Results	5
Section Summaries:	
Community Spirit and Communication	6
Leisure and Recreation	7-9
History and Heritage	10
Planning and Development	11
Environment	12
Traffic and Transport	13-14
Safety and Crime	15
Demographics	16
Questionnaire Conclusions	17
Action Plan	18-22
Appendix I:	
History of the Claybrookes	23
Appendix II:	
Full Listing of Questionnaire Results	24-38

# Maps of the Villages



Please note that a copy of the 1887 O.S. map of the Claybrookes is currently available for viewing on the following website: [www.blackfreighter.net/Map.html](http://www.blackfreighter.net/Map.html)



# Introduction

## Why do we need a Parish Plan?

This seems a sensible starting point! When the councillors of Claybrooke Magna and Claybrooke Parva Parish Councils decided to support an initiative to draw up a Parish Plan in late 2004 we were looking to involve as many residents as possible of all age groups, to provide views on every aspect of village life and use this information to plan for the future of our communities. We wanted to give everyone the opportunity to 'have their say' and from analysis of the results, produce a consensus on how to improve village life for everyone. Over two thirds of residents completed the questionnaire.

## What will we use this plan for?

The Plan will be used for the following purposes, which we have set out below in descending order of importance.

To set out the case and agenda for change where appropriate in line with the consensus view of residents.

To provide feedback to residents on information gathered and actions proposed.

To encourage and promote new and existing community activities.

To provide evidence of consultation for future fundraising.

To act as a 'document of evidence' to influence decisions that may affect village life by County and District Councils, Highways Agency etc.

To be a historical record of villagers' views and aspirations, informing future generations.

## How did we go about preparing this Plan?

Having decided to produce a Parish Plan the two councils agreed that in view of their close proximity and the number of shared facilities – village hall, church, school, pub etc – it was appropriate that the Plan should be undertaken on a joint basis.

With the help, both financial and administrative, of the Rural Community Council, a public meeting was held in the village hall and a steering group was appointed to 'plan the plan'. This was tackled in four stages.

Identification of local problems and opportunities which affect residents and village life. The public meeting and subsequent consultation identified a number of broad issues. These were:

- community spirit
- planning and development
- crime and community safety
- leisure and recreation
- traffic and transport
- environment
- history and heritage.

In all we received 237 comments from residents which 'fitted' into these categories.

Sub groups were formed to explore each of these issues and start developing the questions that would ensure all local concerns would be addressed in the consultation process.

The comprehensive questionnaire was produced, delivered and collected from all households in the two villages and outlying areas. Two further questionnaires for younger age groups were also developed. The detailed statistical analysis, major findings and conclusions were presented at a further public meeting held in the Autumn when further feedback was taken.

The production of the Parish Plan, with intended actions and timetable for further work, is now the subject of this report.

## What happens next?

To date, most of our efforts have been aimed at the identification of residents' needs and concerns, but without providing for a clear plan of action this work will have been for little gain. Each of the sub groups will be tasked with driving forward their proposals in line with the action plans that appear later in this document. Some recommendations are easily addressed; for instance the establishment of a local history group, bearing in mind the level of support shown arising from the questionnaire. Other issues are more complex – the problem with traffic at the school was first mentioned in the Parish Council minutes of 1949! The success of the Plan will ultimately be dependent upon the support of local residents and your resolve to see our local community thrive.

# In Summary

This plan was created as a result of a desire by the representatives of the Parish Councils of Claybrooke Magna and Claybrooke Parva to consult with the population of the two villages over their concerns and priorities about how the villages will develop over the next ten years.

A steering group was formed in January 2005 with representatives from the two villages as well as some Parish Councillors. Over the next few months this committee devised questionnaires for adults, primary age children and young people of secondary school age to ascertain their views.

The questionnaire was distributed and completed by 237 respondents over the summer of 2005, and the results were analysed in the autumn.

Members of the steering group wrote a report for each of the chosen topics based on the results of the survey. In addition an action plan was created, which is included later in this report. It shows what issues have been identified and what progress has been made to date.

The findings of the survey are dealt with in each of the main sections of the report, but they have been summarised as follows:

## **Community Spirit and Communication**

Most people have taken part in at least some of the social and community events in the village, but it was felt that communication could be improved, through the Parish Newsletter, more notice boards and an up-to-date website.

## **Leisure and Recreation**

The village hall is well used and well liked, despite its age it has been maintained to a high standard. Some improvement to allotments and the children's playground were recommended, whilst a majority of respondents felt that a larger play area for ball games, etc. was needed.

## **History and Heritage**

Because of the historical associations of the villages and the age and interest of many of the buildings, a lot of interest was expressed in compiling a detailed history, with relevant documents and photographs. It was suggested that a History and/or Heritage interest group could be formed.

## **Planning and Development**

The overwhelming majority of residents would support only limited development in the villages, with a preference for development on existing brownfield sites. They felt that development should also be in keeping with the existing character of the area.

## **Environment**

The majority of people felt that they enjoy the environment in which they live, walking the local footpaths is one of the most popular leisure activities. They are concerned about maintaining its rural feel and many are willing to get involved to sustain this.

## **Traffic and Transport**

Most residents felt that the speed of the traffic on Main Road and parking around the school are both dangerous and action needs to be taken to protect residents, particularly schoolchildren, who are viewed as being most vulnerable.

## **Safety and Crime**

The majority of residents feel perfectly safe in the villages, but closer links with the police service and Neighbourhood Watch would be helpful to support the ongoing safety of residents.

# Community Spirit and Communication

## Communication

We wanted to discover the effectiveness of our various methods of communication.

Out of necessity, most working people travel outside the area to their employment. This makes it more difficult to be aware of what's happening in the local community, and getting to know other people with similar interests.

How best then to communicate? Most people agreed that delivering a specific leaflet to every household was the most effective method of communicating an event. This can be expensive and time consuming, but can be cost effective if co-ordinated with the delivery of the Swift Flash, for a small fee.

The Swift Flash and Parish Newsletter were also highly rated. The Parish Newsletter has tended to focus on local Church and charity related events, but the editor is happy to include other news and information. It is proposed that the two Parish Councils make a financial contribution to the printing costs of the newsletter for this purpose.

There are many events and activities happening in the villages, but in the main can be difficult to find out about them. The Parish Notice boards serve a purpose, but tend to display only Parish Council or Village Hall information. There are other notice boards about, but these tend to serve a specific purpose. It is therefore proposed to set up two 'Contacts Boards', one inside the Magna Village Hall, and the other in the entrance to St. Peter's Church. The idea is that anyone who runs a local club, event or activity can display their details on these boards.

The Claybrookes website is run by a volunteer, but can be time consuming to keep current; hence it tends to be out of date. If more volunteers were forthcoming then this could become an excellent means of communication. Another proposal is to set up an e-mail database to inform anyone interested in this method of communication of local news and events. This would require a focal point for collection of information, and a group of volunteers to run it.

For recommendations see Action Plan.

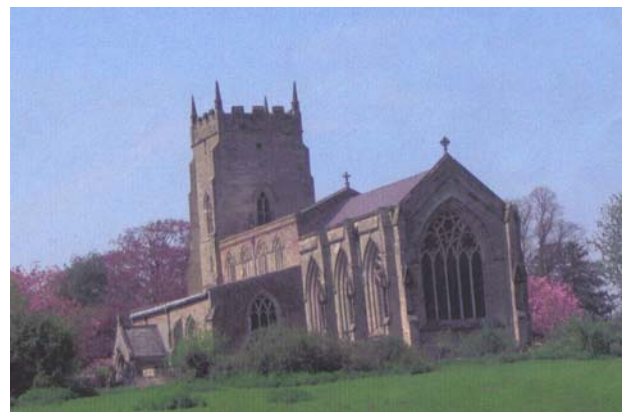


## Community Spirit

From the responses, most people enjoyed the social gatherings, musical events and fetes/garden parties. The majority of events being held at the Magna Village Hall or St. Peter's Church. They do play an important part in enhancing community spirit but do rely on the generosity of a few volunteers. It is hoped that by using the 'Contacts Boards' mentioned above that more ideas and volunteers will be forthcoming.

### St. Peter's Church

This forms an important focal point for the community, but is keen to expand its role for non-religious events and gatherings. The local PCC is looking

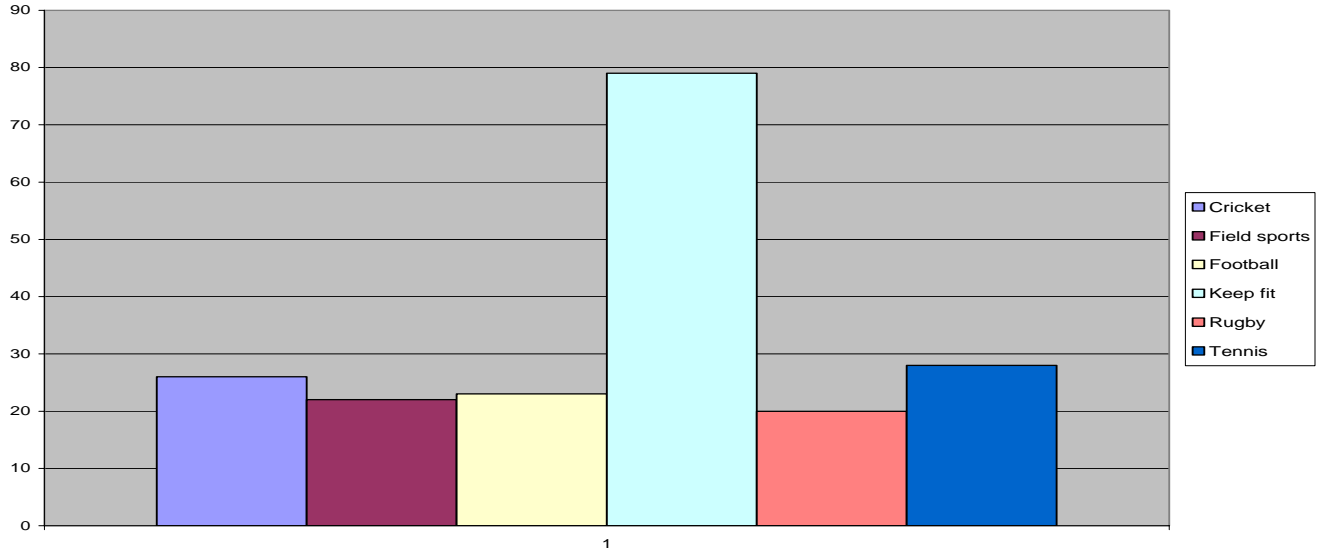


# Leisure and Recreation

## Leisure and Recreation

The Claybrookes offer a range of activities which are in keeping with a small rural community, the most popular activity is walking, with 43% of respondents to our questionnaire taking part in this activity. However there were a large number of other activities which people take part in, the full analysis is included later in this document, but the number who might benefit from a playing field as an amenity for each group surveyed is set out in the graphs below:

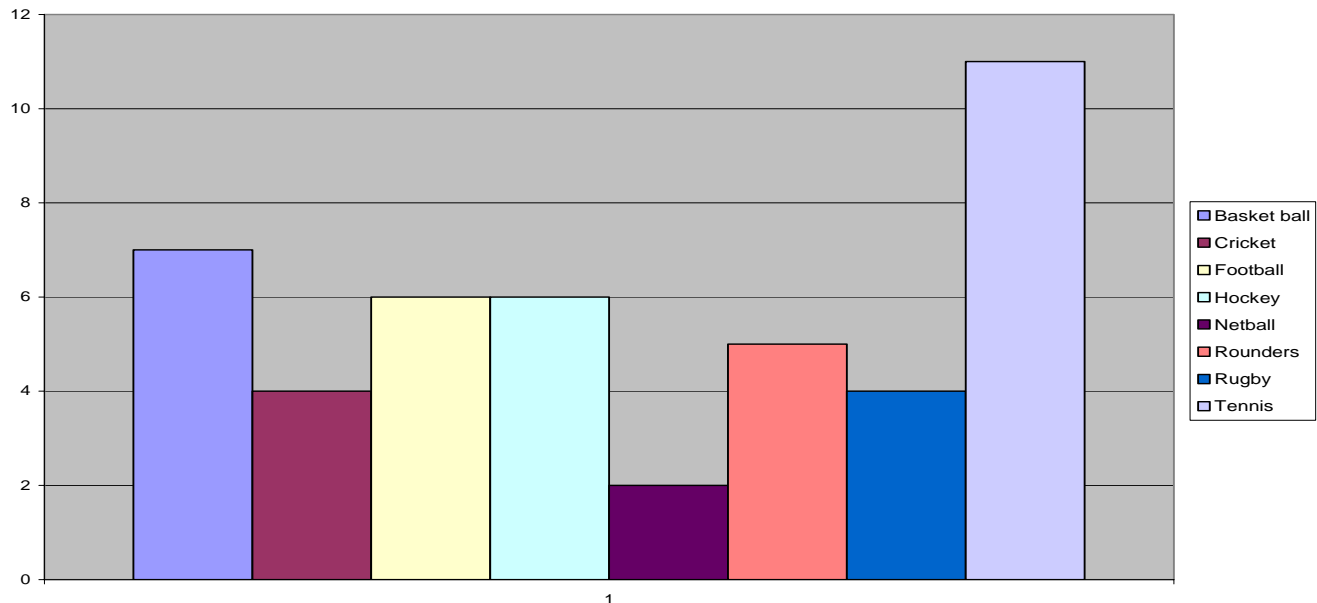
Adult Survey Results



The survey showed that around 150 people from all age groups were taking part in sporting or leisure activities which would benefit from the provision of an open space, such as a grass playing field. This is further reinforced by comments on the idea of a playing field dealt with later in this report.

For younger secondary age group in the village the response was;

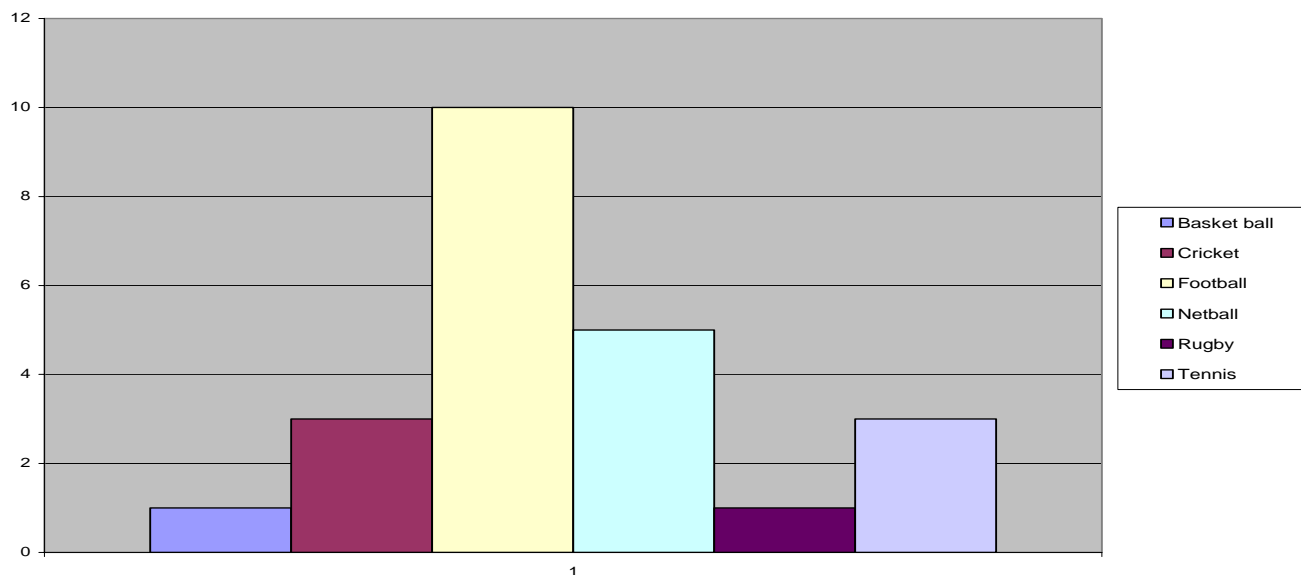
Youth Survey Results



# Leisure and Recreation

From the Primary age group questionnaire the answers were as follows:

Primary Age Results



The idea of providing a playing field came from suggestions made by residents prior to the survey being carried out. The results of the survey suggest that there are a lot of people who would find the amenity useful, and that many were prepared to become actively involved in the support of such an activity, either through fund raising, coaching or other activities.

## The Village Hall

The Village Hall is often used as a venue for meetings, social events, clubs and keep fit activities. It has been greatly improved over the last 5 years by the renovation of roof and floors, extended storage facilities, improved kitchen, heating and lighting, new disabled toilet, improvements to ladies and gents, and replacements to seating and tables.

There was a good response to the questionnaire with 51.5% of people having used the village hall in the last 6 months. However, that still left a large number who have not used the hall recently but gave their views on its facilities. This should be borne in mind when taking into account any criticism. The main responses are summarised below:

When asked what was their opinion of Village Hall facilities the response was:

	Acceptable to very good	Poor or very poor
Main Hall	99.5%	0.5%
Kitchen	97%	3%
Lighting	99%	1%
Heating	98%	2%
Seating	91%	9%
Toilets	92%	8%
Disabled	93%	7%

# Leisure and Recreation

When asked about any concerns or criticisms of the Village Hall 55% of respondents felt that parking was an issue.

## Recommendations

In view of the generally high level of acceptability of the hall itself, there are no recommendations for improvements to its facilities in this plan. The Village Hall Committee has done a good job and should be encouraged to continue its programme of maintenance and improvement.

Car parking amenities should be improved. It was noted that for "open gardens" events car parking at the woodyard was made available. Options for further co-operation with the woodyard, or other local landowners, for regular off-street parking for Village Hall events should be explored.

50% of adult respondents felt that they would like short courses or more activities at the Village Hall. Suggestions will be passed to the Village Hall Management committee for further action.

## Allotments

The Claybrookes have two areas of allotments. In Claybrooke Parva an area adjoining the school playing field is in use. In Claybrooke Magna there is part of a large field on the main road to High Cross that is set aside for allotments. In earlier times the whole of this 7 acre field had been set aside for allotment holders, but now only 5 plots remain.

At the time of conducting the survey there were a number of vacant allotments, these have subsequently been let as a result of the interest generated by the survey.

## Recommendations

The main recommendation for the Claybrooke Parva allotments was that there should be a water tap available for allotment holders.

For Claybrooke Magna, it was recognised that the site is some way from the village, so improved parking facilities are needed to attract allotment holders.

## The Children's Playground

The children's playground is called Harrison's Field and is situated at the bottom of Laurel Fields in Claybrooke Magna. The field itself was donated by Mr & Mrs Harrison who used to live at The Laurels on Main Road in Magna.

Public fund raising paid for the landscaping and equipment which was installed in 1988. The equipment consisted of a log bridge, monkey bars, chain walk, swings and slide and was mainly constructed of timber. Maintenance of the park was taken over by the Parish Council and subsequently a toddler's swing, seesaw and spring seat have been installed, all of metal construction. Some timber items, including an overhead ladder and one of the monkey bars, have been dismantled because of decay in the timber frame.



Regular grass cutting is done and a shrubbery has been planted at the expense of the Parish Council. An annual safety inspection is also done.

Amongst adult respondents 25% said their families used the playground on a weekly or monthly basis. 82% felt that the equipment was acceptable or better.

Further questions identified that 61% of adult respondents felt that the playground did not fully meet the needs of children. This was largely because there is no area to play ball games. The survey of Primary age children showed 89% in favour of having a playing field, amongst the youth age group it was 93%. From comments in the two sets of childrens' survey responses it was clear that lack of a play area was the biggest single criticism of village amenities.

## Recommendations

The children's play area can be improved initially by a few minor improvements:

Removal of redundant fencing and extending grassed area.

More regular strimming/removal of weeds

Regular attention to safety surfaces and maintenance of equipment.

Regular emptying of waste bin and removal of rubbish.

A site for a grassed area for ball games, etc, should be sought as a matter of urgency. 54% of respondents said they would be willing to be actively involved, of these people half would be willing to do fundraising, with others willing to do grounds maintenance and coaching/supervision.

# History and Heritage

As to be expected, most people thought it important to preserve out history and heritage.

History itself covers a vast time span; the further we look back the less information we find, and the less accurate we can be, but nevertheless it is a fascinating subject. Much information does exist, for example The Public Records Office, other offices and private homes, but is not easily accessible or readily available. Much modern history is still in the minds of older and longstanding residents of the local Parishes, and this, with their help, needs to be recorded for future generations.



It is clear that there is much support for a History and Heritage Group if one was formed, and it is perhaps helpful here to note some points raised at the group planning sessions.

1. The group should ideally be headed by someone already knowledgeable in the subject, or an area of it.
2. There are 93 willing volunteers able to either collect, organise or share the information gained.

There should ideally be an area set aside in the villages where the information can be accumulated and displayed.

## **Recommendations**

It is now proposed to invite suitable interested parties to form a group, using the new 'Contacts Board' or other appropriate means, then hold a public meeting to explore the possibilities, with the support of Parish Councils.



# Planning and Development

Almost all residents who replied to the questionnaire tackled the questions demonstrating the importance of planning and development issues locally.

With regard to **Residential Development** the majority (55%) would support small scale in-fill planning applications. A larger percentage (76%) were prepared to see the development of brownfield sites. All other suggestions of larger, greenfield developments were emphatically rejected. A significant majority of residents believe that any residential development should include an element of social (low cost) housing and they would also support the development of retirement homes in the area.

We asked your views as to whether the listed building status which some properties in the village have should be extended to cover other properties/areas. Most villagers did not wish to see any additions which have the effect of placing additional planning restrictions on householders of such properties. A number of residents felt that any new planning consent should include conditions that ensured it would be sympathetic to surrounding buildings and enhance the villages' appearance generally. At the public meeting, some villagers felt that the new houses recently constructed on the former 'Woodies' site at the top of Bell Street largely achieved these aims.

We also asked questions about further **Commercial/Industrial Development** in the area. There was little appetite for any new large scale or even starter unit (say, up to 25 employees) development, although a majority (66%) would support brownfield development (ie redevelopment of existing sites).

## Actions

Harborough District Council should take these views into account when recommending/declining planning applications, subject to planning legislation.

The guidelines are discussed and accepted by Harborough District Council Planning Committee who have responsibility to agree planning applications locally.

A definitive statement on developments 'sympathetic to the area' in terms of design, details, scale and materials used should be drawn

up for adoption by Parish and District Councils, so that the character of the whole village can be taken into account. .

## See Also

Maps of the villages, highlighting conservation areas and listed buildings, are included at the front of this publication.



The picture above is an extract from the 1887 O.D. map of the Claybrookes.



# Environment

The majority of residents who replied to the questionnaire are happy with the environment in the Claybrookes, stating that the most important features of the villages are the countryside itself, the church, village hall, pub and school.

In relation to the 'green' environment, 75% of respondents felt that the trees were adequately maintained and protected in the villages but only 55% thought that the hedges and footpaths were kept in good condition. Areas of concern were cited but the majority suggested that the hedge-row on the road between the two villages was the main problem area. Twenty-four people have expressed an interest in becoming a tree warden/natural heritage warden for the villages and at the public meeting a footpath warden was also suggested, which could support in these areas.

In addition, 67% of respondents would like to see more trees planted and 84% agree that hedge planting should be encouraged in lieu of close board fencing, areas which can be taken into consideration for the future planning and development of the villages.

The majority of respondents (78%) consider that the villages are kept tidy and 64% are prepared to help with the local clean up schemes. As this number is far in excess of the number who currently are involved, marketing of the events is to be increased, so that all can become involved. However, more than half of the respondents consider that more litter and dog bins are required, with the most favoured location being between the two villages.

When considering recycling, only 55% of respondents are happy with the current system. The main concerns are the fortnightly collection of 'black' bins and the lack of plastic recycling facilities. 60% also expressed an interest in textile recycling. Since the open meeting, a textile recycling 'bin' has been organised by the Vicar at the church. In the meantime, while other options are being investigated, current opportunities for households to recycle can be found in the Appendix.

At the time of completing the questionnaire (July 2005), no major areas of concern existed with pollution (noise pollution was highest at 30%). However, at the public meeting in November, the concern was raised that noise pollution had

increased since July due to additional flights from Coventry airport. This needs to be monitored.

## ACTIONS

Parish Councils to decide how to progress and implement wardens' roles, perhaps with the support of a volunteer heritage/environmental group.

Parish Councils to take into account hedge planting when creating the 'statement on development' (see Planning and Development).

Parish Councils to advertise clean up schemes.

Parish Councils to investigate the requirement for additional litter and dog bins.

Investigate with District Council situation regarding 'black bin' collection and opportunities to collect plastics



# Traffic and Transport



Most residents frequently travel by car (95%) or walk (77%) through the villages. Much smaller numbers cycle (38%) or use public transport (12%).

In reply to the questionnaire and at the recent public meeting, one of the most debated issues was **speed of traffic** on our roads and the danger this poses, particularly to children. 63% of residents felt action needed to be taken to reduce traffic speeds on the main road running through both villages. The Parish Plan committee had already had preliminary conversations with the Leicestershire Highways Authority to determine what criteria they set in terms of agreeing to traffic calming measures. These are:-

evidence of traffic incidents that did, or may have, endangered residents, which have been reported to the Police.

the willingness of the local community to fund at least part of the cost of any work undertaken through local council tax.

In both cases, replies to the questionnaire failed to match the Highways Authority's criteria. Only 30% of residents were prepared to see their council tax increase to pay for roadworks and, in most cases, the amounts pledged were very small in relation to probable costs and very few traffic incidents had been reported to the Police.

Suggestions about which traffic calming measures might be appropriate did not produce a definitive consensus. We are left, therefore, with a view that 'something has to be done' to slow down traffic through the villages, but problems with meeting the Highways Agency's criteria for introducing change and no clear view from a majority of residents about what those changes should be.

Another related issue raised by residents is **parking in and around the school**. 75% considered this a problem even though the majority (56%) felt that 'No Parking' cones and (60%) 20 mph warning signs had been at least moderately effective. This is a longstanding issue which all agree is difficult to resolve. We received almost as many different suggestions to resolve the problem as there are residents in the village, although the majority (56%) felt a 'zebra crossing' at the school would improve safety for schoolchildren and parents.

We asked whether there were **other areas in the village where parking is a problem**. 41% of residents said that there are. Of these:-

- 20 residents cited the village hall
- 18 residents cited Avenue Villas in Claybrooke Parva
- 13 residents cited the junction of Bell Street/Main Road in Claybrooke Magna.

# Traffic and Transport

Other issues raised included wide views on the **quality of the bus services** through the villages. Approximately the same number of residents felt that the frequency of buses was both very good and very poor! Few residents had used either the Village Link or Volunteer Bus services. There was also concern expressed at the number of **heavy goods vehicles** using Main Road as a 'rat run'. 90% of residents felt such vehicles should be prevented from using the village in this way.

Most residents (62%) were satisfied with **road maintenance** although some concerns were expressed about the deterioration in the road surface of Woodway Lane leading from the A5 into Claybrooke Parva. 62% were satisfied with the existing **street lighting**. The issue of an additional street light at the junction of Western Drive and Main Road in Claybrooke Parva which a number of residents wished to see is already the subject of correspondence with Harborough District Council. **Road signage** was viewed by most residents (85%) as adequate and appropriate.



## Actions

Parish Councils/District/County Councilor to enter into further discussions with Leicestershire Highways Authority to determine the options to resolve parking problems at and around the school.

They should also contact Leicestershire Highways Authority with regard to speeding on Main Road, then cost out the options.

Proposals should be put before a further public meeting, possibly setting up a Traffic Action Group and/or Community Speedwatch Scheme. Some 53 residents said they would be willing to be actively involved in such a meeting.

Publicise the Village Link and Volunteer Bus services more widely.

Contact owners of HGVs that regularly use Main Road as a 'rat run'.

# Safety and Crime

The majority of respondees feel safe in the Claybrookes, with 100% feeling safe in the daytime, reducing to 85% after dark, although 60% feel that they would feel safer with a greater police presence.

Many respondents were able to cite examples of crime and/or anti-social behaviour which had been experienced over the last ten years. The most prolific incidents in the last year have been verbal nuisance/intimidation (24 incidents), vandalism (21 incidents), domestic noise and dogs/animals (20 incidents each). In the period 2-5 years, higher numbers of incidents included theft and vandalism (average of 4 incidents per year) and dogs/animals (average of 3 incidents per year). In the period 6-10 years, most concerns were raised with theft and car crime (average of 5 incidents each per year).

In response of the question concerning help received from the police when incidents were reported, more respondents were unhappy with the the response they received than were happy with it . This was mirrored by the perception of the current police service, where almost twice as many respondents felt that the police were not meeting their expectations compared to those who felt they were. This was also voiced at the open meeting where further concerns were also raised with reference to safety and crime in the villages.

It was therefore agreed that a meeting should be arranged for all residents to meet with the police to move matters forward.

A proposal to pay for the employment of a Community Support Officer to support the above issues was rejected by 72% of respondees, so this will not be followed up at this time. However, the proposal to involve more people in the Neighbourhood Watch Scheme was well received.



## RECOMMENDATIONS

Understand the role of the police within the villages.

Open meeting to be organised for residents to meet with the police.

Report all anti-social behaviour to the police.

Reinvigorate the Neighbourhood Watch Scheme.

# Demographics



The response showed an almost even split between males and females living in the villages, with 50.3% being male and 49.7% being female.

The respondent population is made up of 19% children, 61% adults of working age and 20% of retirement



age.

Occupation – the majority of respondents (66%) are employed in full-time work, but the whole range of occupations are covered from retired to job seeker to housewife/househusband.

The housing stock of respondents is mainly detached (56%), with over a quarter being semi detached, 16% are bungalows and 1% are terraced. The majority of housing is owner occupied (94%).

The length of time people have lived in the villages varies widely. 21% of respondents have lived here for only 1-5 years, 38% for 6-15 years and 35% for over 15 years.

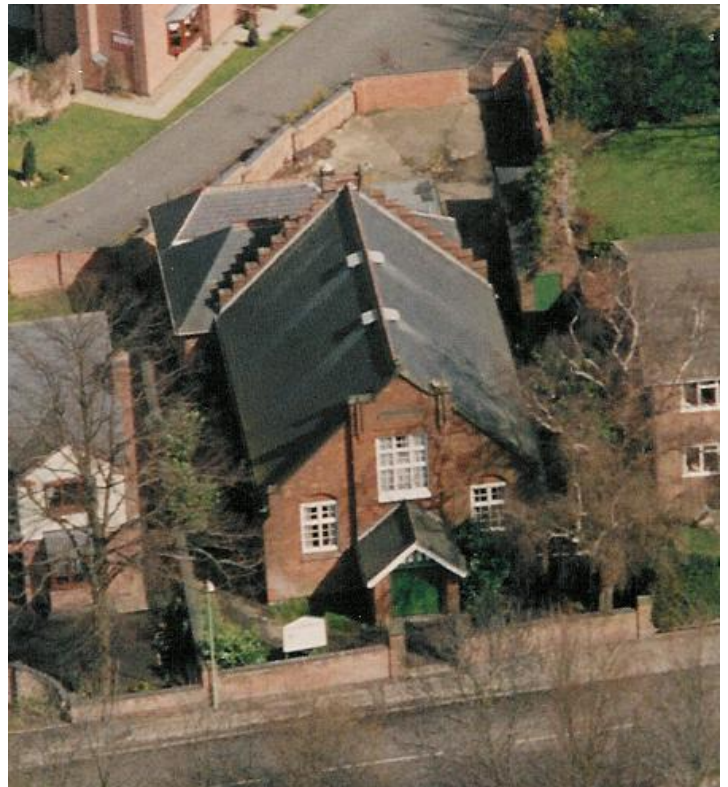


## Questionnaire Conclusions

This is the first time our villages have undertaken such a comprehensive evaluation of residents' views and attempted to convert the consensus into actions which should make the Claybrookes an even better place to live. We had no idea, when we started this exercise, just how much work was involved in drawing up the plan (if we had, maybe we wouldn't!). Much of the real work though, begins now as we move into implementing our recommendations.

We would like to take this opportunity to thank our colleagues on the Parish Plan Committee and the sub groups for all their hard work over the past twelve months, and to everyone who took the time to complete the questionnaires and attend the public meeting. We will be calling on your continued support to turn your combined thoughts into tangible improvements in our community.

Joint Chairmen  
Parish Plan Committee



# FINAL ACTION PLAN

COMMUNITY SPIRIT & COMMUNICATION				
Main Target	Enabling Targets	Time Scale	Key Stakeholders	Recommended Actions and Comments
<b>Discover the best ways to utilise communications of village groups/events</b>	The Parish Newsletter was highly rated and could be used more effectively.	Completed May 2006	* Claybrooke Magna and Parva Parish Councils  * The Parish Newsletter	We recommend that the Parish Council contributes towards the printing costs of the Parish Newsletter.
	The villages hold many activities and events, knowledge of these is often limited as space on notice boards is limited or used for a specific purpose.	Completed Summer 2007	* The Village Hall Committee  * St Peters Church	We recommend that two new notice boards should be developed advertising contact information for upcoming events.
	Utilise the Claybrookes website by ensuring the information is up to date and that new news is automatically received by residents.	Ongoing	* Volunteers	Develop an email database to advertise local events electronically. Link to <a href="http://leicestershireparishcouncils.org.uk">leicestershireparishcouncils.org.uk</a> and <a href="http://leicestershirevillages.com">leicestershirevillages.com</a>
	St. Peters Church is an important focal point for the community, investigation into ways to improve use is needed.	Ongoing	* St Peters Church * Local PC * Volunteers	Develop the potential for St. Peters Church to expand its role for non-religious events and gatherings.

# FINAL ACTION PLAN

LEISURE AND RECREATION				
Main Target	Enabling Targets	Time Scale	Key Stakeholders	Recommended Actions and Comments
<b>Future development of the village hall to encourage greater use</b>	Encourage the Village Hall Committee to continue their good work, continuing its programme of maintenance and improvement.	Ongoing	* Village Hall Committee	We recommend that the Village Hall Committee continues its good work in improvement of the site and consults local residents on their requirements for activities and facilities.  (Many new activities have been added recently, e.g. line dancing, marshal arts, high quality entertainers, quiz, etc.)
	Develop the car parking facilities/capacity.	Long Term	* Village Hall Committee/ County Councillor  * Woodyard	
	Develop the range of activities available at the Village Hall according to requirement.	Ongoing	* Village Hall Committee	
<b>Improvement to allotment areas to encourage greater use</b>	The instalment of a water tap for allotment holders would be appreciated.	Short term	* Allotment Owners * Marc Smith Charity	Work with the Allotment owners and holders to agree on the best way forward. (larger water butts have been provided at Parva)
	Parking facilities for allotment holders.	Long term	* Allotment Owners * Claybrooke Poor's Land Charity	
<b>Improvement of the Children's Playground to encourage greater use</b>	Grassed areas for ball games.	Long Term	* Local Landowners * Parish Council/Harborough District Council	The request for a grassed area of land for ball games was so great that over 50% of respondents would be actively involved in aiding this process through fundraising or maintenance for instance. We recommend that the relevant bodies utilise the aid of local residents and the evidence of consultation. We recommend general improvement and maintenance of the Playground area.
	More regular strimming and removal of weeds.	Ongoing	* Parish Council	
	Increased attention to safety surfaces and maintenance of equipment.	Ongoing	* Parish Council	
	Removal of redundant fencing	completed	* Parish Council	
	Regular emptying of waste bin and removal of rubbish.	New bin provided	* Parish Council * Harborough District Council	

# FINAL ACTION PLAN

## HISTORY AND HERITAGE

Main Target	Enabling Targets	Time Scale	Key Stakeholders	Recommended Actions and Comments
<b>Establish a History and Heritage Group</b>	Advertise an open meeting to gauge interest.	Medium Term	* Local residents	We recommend that interested parties should identify themselves via the Parish Councils
	Contact Holly Hayes and other advisory bodies for advice.	Medium Term	* Holly Hayes at LCC	
	Advertise details and contacts through local media.	Medium Term	Parish Archaeologist	

## PLANNING AND DEVELOPMENT

Main Target	Enabling Targets	Time Scale	Key Stakeholders	Recommended Actions and Comments
<b>Set up a Public meeting to start a Village Design Statement</b>	Parish Council to support a Village Design Statement.	Medium Term	* Parish Council	The Majority of respondents would support only limited development in the villages, which should be in keeping with the existing character of the area.  As an aid to communication of planning applications an email or ring tree contact system should be set up.
	The Village Design Statement should be discussed and accepted by our District Councillor and Harborough District Council who have responsibility to agree planning applications locally.	Medium/Long Term	* Parish Council * Harborough District Council	
	A definitive statement on developments 'sympathetic to the area' in terms of design, details, scale and materials used to be drawn up for adoption by Parish and District Councils. This should be done by local volunteers in full consultation with the whole community.	Medium/Long Term	* Parish Council * Harborough District Council	

# FINAL ACTION PLAN

ENVIRONMENT				
Main Target	Enabling Targets	Time Scale	Key Stakeholders	Recommended Actions and Comments
<b>To ensure that residents have the opportunity to enjoy the environment in which they live and maintain its rural feel.</b>	Parish Councils to decide how to progress and implement wardens roles.	Completed	* Parish Councils	Advertising has taken place via Parish newsletter. Archaeology Warden now appointed.
	Parish Councils to take into account hedge planting when creating the 'statement on development'.	Timescale to coincide with Village Development Plan	*Parish Councils *District Councillor	Make hedge planting part of considerations on planning applications.
	Parish Councils to advertise clean up schemes.	Clean up in both Villages, each April	* Parish Councils	Repeat annually.
	Parish Councils to investigate the requirement for additional litter and dog bins.	Completed	* Parish Councils	Parish Councils to identify sites, work with HDC to install new bins.
	Investigate with District Council situation regarding 'black bin' collection and opportunities to collect plastic.	Ongoing	* Parish Councils  * Harborough District Council	Investigations have already taken place and feedback from Harborough District Council has been incorporated into the latest version of the Environment summary of the Parish Plan.

# FINAL ACTION PLAN

## TRAFFIC AND TRANSPORT

Main Target	Enabling Targets	Time Scale	Key Stakeholders	Recommended Actions and Comments
<b>Reduce speeding through the villages and aid the parking situation</b>	Parish Councils to enter into further discussions with Leicestershire Highways Authority to determine the options to resolve parking problems at and around the school and speeding on Main Road, then cost out the options.	Ongoing	* Leicestershire Highways Authority  * Parish Council	Initial proposals now received from LHA.
	Proposals for change should be put to a public meeting.	Ongoing	*Local residents *Parish Councils *LHA	Public meeting held and LHA proposals rejected as inadequate. Resolved that the PC will monitor the effectiveness of the 30mph warning lights installed in Ullesthorpe before approaching LHA again. Review Parish Councils - 6 months.
<b>Raise awareness of residents to existing community transport initiatives</b>	Publicise the Village Link and Volunteer Bus services more widely.	1 month	* Parish Council * South Leics Voluntary Action Group.	

## SAFETY AND CRIME

Main Target	Enabling Targets	Time Scale	Key Stakeholders	Recommended Actions and Comments
<b>Increase residents awareness of local crime prevention initiatives</b>	Understand the role of the police within the villages.	Completed	* Parish Council  * Leicestershire Constabulary	Open meeting to be organised for residents to meet with the police.
	Reinvigorate the Neighbourhood Watch Scheme.	Medium Term	* New Neighbourhood Watch Group. * Police	Open meeting to offer residents the opportunity to join.

## History of The Claybrookes

The villages of Claybrooke Magna and Claybrooke Parva are in South West Leicestershire, England, close to the A5 trunk road, which marks the boundary between Leicestershire and Warwickshire. Follow the A5 North for a few miles and it leads to a junction with the M69 motorway, a few miles to the west is the M6 motorway and six miles to the east is the M1 motorway.

To reach the Claybrookes from the A5 you can turn off at High Cross, known as the centre of Roman England, as it was the point where the Roman Watling Street crossed the Fosse Road, two principal Roman roads. Little sign is evident now other than the remains of a monument, built to mark the spot in the 17<sup>th</sup> Century but later destroyed by lightning. This road to the Claybrookes was formerly the B577 to Lutterworth but a few years ago was de-classified, to deter heavy lorries from using it. In the 18<sup>th</sup> and 19<sup>th</sup> centuries this route was on the main coach road from London to Holyhead and there are two well preserved mile posts, one in each of the villages.

Claybrooke Magna is the larger of the two villages with a population of around 400 people. There are around 30 houses in the village built in the 1990's, but some of the housing is much older with buildings dating to Victorian and Georgian times, with some half-timbered Tudor houses by the Vineyard. A little way out of the village is an old water-mill, still in working order, which is driven by the small stream which winds its way through the area.

Claybrooke Parva, although now the smaller of the two villages, is the site of both the church and the village school. The church is thought originally to be part Anglo-Saxon with later additions in Norman and Medieval times. It has a square tower with a working clock, the tower houses a peal of 8 bells which regularly ring out over the countryside. In the body of the church are monuments to former local residents and a list of vicars stretching back to the 13<sup>th</sup> century. The roof beams are particularly fine examples of medieval craftsmanship, but sadly affected by death watch beetle and have needed very expensive restoration.

Next to the church is a magnificent rectory built in 1710, now a private home, it has the remains of an ancient moat in its garden. Across the road is Claybrooke Hall, once the home of the Dicey family and of a former director of the Midland Railway, which ran through nearby Ullesthorpe. The Hall is being carefully restored to its former glory by Mr and Mrs Barker, its current owners. There are a number of other substantial older houses in the village with some later additions in the 1970's.



The school was founded in 1810 by a charitable trust, the Marc Smith Charity, which still owns the grounds and raises money for educational grants to children from the area. Although the original building dates from 1810 the school boasts modern facilities and a number of later extensions. Although only having around 65 pupils it has a covered swimming pool for the children which was paid for by PTA fund-raising.

The school draws children not only from the Claybrookes but also from the nearby hamlets of Wibtoft and High Cross, the villages of Ullesthorpe and Frolesworth, although Ullesthorpe and nearby Bitteswell also have small primary schools.

The area is still very rural, despite its proximity to motorways, so local attractions centre around the availability of walks through the attractive countryside. Of particular interest to walkers and campers is a 3 miles stretch of the Old Fosse Road which is now closed to traffic. It leads from a field at High Cross which allows views far to the North across Leicester to the hills of Charnwood Forest. Its further end, near Frolesworth is marked by a recently-planted arboretum, at Fosse Meadows, where there is a car park and information boards for those interested in the natural habitat of birds and animals. Many other footpaths cross the area. Some of these are waymarked as part of the 'Leicester Round', a series of connected walks in Leicestershire regularly visited by ramblers.

## Questionnaire Results—Adults

Total number of respondents 273

**Q1A Of the following methods of communication, which are the most effective for informing you about local news and events? Please rank in order of effectiveness 1 - 6 (1 being the most effective)**

**Leaflet delivered to every house**

	Number of responses	Percentage
1 - most effective	205	78.85%
2	31	11.92%
3	13	5.00%
4	7	2.69%
5	1	0.38%
6 - least effective	3	1.15%
<b>Number of respondents</b>	<b>260</b>	

**Parish Council Notice Boards**

	Number of responses	Percentage
1 - most effective	9	3.7%
2	27	11.11%
3	47	19.34%
4	49	20.16%
5	62	25.51%
6 - least effective	49	20.16%
<b>Number of respondents</b>	<b>243</b>	

**The Claybrookes' web site**

	Number of responses	Percentage
1 - most effective	11	4.62%
2	16	6.72%
3	21	8.82%
4	35	14.71%
5	45	18.91%
6 - least effective	110	46.22%
<b>Number of respondents</b>	<b>238</b>	

**Parish Newsletter**

	Number of responses	Percentage
1 - most effective	82	32.16%
2	70	27.45%
3	46	18.04%
4	41	16.08%
5	7	2.75%
6 - least effective	9	3.53%
<b>Number of respondents</b>	<b>255</b>	

**Through friends/grapevine**

	Number of responses	Percentage
1 - most effective	23	9.5%
2	26	10.74%
3	51	21.07%
4	45	18.6%
5	53	21.9%
6 - least effective	44	18.18%
<b>Number of respondents</b>	<b>242</b>	

**Local newspapers, e.g. Swift Flash**

	Number of responses	Percentage
1 - most effective	73	28.19%
2	76	29.34%
3	63	24.32%
4	28	10.81%
5	12	4.63%
6 - least effective	7	2.7%
<b>Number of respondents</b>	<b>259</b>	

**Other, please state below**

	Number of responses	Percentage
1 - most effective	0	0.00%
2	0	0.00%
3	2	14.29%
4	0	0.00%
5	1	7.14%
6 - least effective	11	78.57%
<b>Number of respondents</b>	<b>14</b>	

**Q1A If you ticked other, please state**

	Number of responses	Percentage
Answered	9	3.3%
<b>Number of respondents</b>	<b>9</b>	

**Q2 Would you be interested in being e-mailed about local issues and events?**

	Number of responses	Percentage
Yes	107	40.07%
No	160	59.93%
<b>Number of respondents</b>	<b>267</b>	

**Q3 How often do you read the Parish notice board?**

	Number of responses	Percentage
Daily	3	1.12%
Weekly	33	12.27%
Monthly	103	38.29%
Never	130	48.33%
<b>Number of respondents</b>	<b>269</b>	

**Q3A What were you looking for?**

	Number of responses	Percentage
Answered	94	34.43%
<b>Number of respondents</b>	<b>94</b>	

**Q4 How often do you look at Claybrookes' own web site [www.claybrooke.org.uk](http://www.claybrooke.org.uk)?**

	Number of responses	Percentage
Daily	0	0.00%
Weekly	2	0.75%
Monthly	23	8.68%
Never	240	90.57%
<b>Number of respondents</b>	<b>265</b>	

**Q4A What were you looking for?**

	Number of responses	Percentage
Answered	59	21.61%
<b>Number of respondents</b>	<b>59</b>	

**Q5 A local newsletter already exists, but is there room for another newsletter dedicated to local issues? If so, what information would you like to see included and how often would you like it to be circulated?**

	Number of responses	Percentage
Answered	131	47.99%
<b>Number of respondents</b>	<b>131</b>	

# Questionnaire Results—Adults

**Q6 It is suggested that locally organised events improve the sense of community spirit. What sort of events appeal to you? Please tick any that apply.**

	Number of responses	Percentage
Social gatherings	136	55.74%
Musical events	127	52.05%
Competitions	45	18.44%
Sports events	78	31.97%
Educational	40	16.39%
Fetes/garden party	148	60.66%
Walking/cycling	75	30.74%
Reading/Poetry group	17	6.97%
Talks on topics of interest	84	34.43%
other	25	10.25%
<b>Number of respondents</b>	<b>244</b>	

**Q6A If you ticked other, please make your suggestion.**

	Number of responses	Percentage
Answered	31	11.36%
<b>Number of respondents</b>	<b>31</b>	

**Q7 St. Peter's Church provides a haven at those special times of birth, life and death. How do you think it could become more available to you and your family in the ordinary days of your lives?**

	Number of responses	Percentage
Answered	81	29.67%
<b>Number of respondents</b>	<b>81</b>	

**Q8 Have you any other suggestions or ideas relating to this section?**

	Number of responses	Percentage
Answered	21	7.69%
<b>Number of respondents</b>	<b>21</b>	

**Q9A Are you involved in any organised leisure activities in?**

**In Claybrooke**

	Number of responses	Percentage
Yes	46	20.00%
No	184	80.00%
<b>Number of respondents</b>	<b>230</b>	

**Lutterworth Leisure Centre**

	Number of responses	Percentage
Yes	33	16.02%
No	173	83.98%
<b>Number of respondents</b>	<b>206</b>	

**Elsewhere**

	Number of responses	Percentage
Yes	93	42.27%
No	127	57.73%
<b>Number of respondents</b>	<b>220</b>	

**Q10 What type of activities are you involved in or would be interested in participating in? Please tick any that apply:**

	Number of responses	Percentage
Bell ringing	12	5.66%
Camping/Caravanning	29	13.68%
Choirs	13	6.13%
Coffee mornings	30	14.15%
Cricket	26	12.26%
Field sports	22	10.38%
Football	23	10.85%
Forget-Me-Nots	19	8.96%
Garden Club	42	19.81%
Horse riding	30	14.15%
Karate	11	5.19%
Keep Fit	79	37.26%

Mums and Tots	12	5.66%
Music/Theatre	74	34.91%
Playgroup	10	4.72%
Rugby	20	9.43%
Scouts/Guides	10	4.72%
Tennis	28	13.21%
Walking	91	42.92%
Water sports	29	13.68%
Youth Club	10	4.72%
Other	45	21.23%
<b>Number of respondents</b>	<b>212</b>	

**Q10A If you ticked other, please specify.**

	Number of responses	Percentage
Answered	50	18.32%
<b>Number of respondents</b>	<b>50</b>	

**Q11 The Village Hall is used by many people for a wide range of activities. Have you used the Hall or attended a function there in the last 6 months?**

	Number of responses	Percentage
Yes	137	51.5%
No	129	48.5%
<b>Number of respondents</b>	<b>266</b>	

**Q12A What is your opinion of the following Village Hall facilities?**

	Number of responses	Percentage
<b>Main Hall</b>		
Very good	73	35.27%
Good	98	47.34%
Acceptable	35	16.91%
Poor	1	0.48%
Very poor	0	0.00%
<b>Number of respondents</b>	<b>207</b>	

	Number of responses	Percentage
<b>Kitchen</b>		
Very good	44	23.28%
Good	76	40.21%
Acceptable	63	33.33%
Poor	6	3.17%
Very poor	0	0.00%
<b>Number of respondents</b>	<b>189</b>	

	Number of responses	Percentage
<b>Lighting</b>		
Very good	58	30.21%
Good	87	45.31%
Acceptable	45	23.44%
Poor	2	1.04%
Very poor	0	0.00%
<b>Number of respondents</b>	<b>192</b>	

	Number of responses	Percentage
<b>Heating</b>		
Very good	56	30.27%
Good	81	43.78%
Acceptable	45	24.32%
Poor	3	1.62%
Very poor	0	0.00%
<b>Number of respondents</b>	<b>185</b>	

# Questionnaire Results—Adults

## Q13A Do you have any concerns or issues regarding the Village Hall?

Parking	Number of responses	Percentage
Yes	116	54.98%
No	95	45.02%
<b>Number of respondents</b>	<b>211</b>	

User friendliness	Number of responses	Percentage
Yes	9	5.52%
No	154	94.48%
<b>Number of respondents</b>	<b>163</b>	

Range of activities available	Number of responses	Percentage
Yes	38	22.49%
No	131	77.51%
<b>Number of respondents</b>	<b>169</b>	

Other	Number of responses	Percentage
Yes	10	11.24%
No	79	88.76%
<b>Number of respondents</b>	<b>89</b>	

Q13A Other, please specify.	Number of responses	Percentage
Answered	21	7.69%
<b>Number of respondents</b>	<b>21</b>	

## Q14 Do you have any concerns or views on the allotments in the Claybrookes?

	Number of responses	Percentage
Do not use them	211	83.4%
Do not use them, but may do so in future	24	9.49%
Would welcome further information	24	9.49%
Already use them and find them acceptable	5	1.98%
Already use them and feel improvements could be made	6	2.37%
<b>Number of respondents</b>	<b>253</b>	

## Q14A If you feel improvements are needed to the allotments please give details below.

	Number of responses	Percentage
Answered	39	14.29%
<b>Number of respondents</b>	<b>39</b>	

## Q15 Does your family use the children's play area in Clay-brooke Magna?

	Number of responses	Percentage
Yes	63	24.61%
No	193	75.39%
<b>Number of respondents</b>	<b>256</b>	

## Q15A If yes, how often?

	Number of responses	Percentage
Daily	0	0.00%
Weekly	26	39.39%
Monthly	40	60.61%
<b>Number of respondents</b>	<b>66</b>	

## Q16 What is your opinion of the play equipment available?

	Number of responses	Percentage
Very good	8	7.48%
Good	42	39.25%
Acceptable	37	34.58%
Poor	16	14.95%
Very Poor	4	3.74%
<b>Number of respondents</b>	<b>107</b>	

## Q16A Do you have any comments or concerns (e.g. safety, signage or other)?

	Number of responses	Percentage
Answered	43	15.75%
<b>Number of respondents</b>	<b>43</b>	

## Q17 Does the children's play area fully meet the needs of your children?

	Number of responses	Percentage
Yes	33	38.37%
No	53	61.63%
<b>Number of respondents</b>	<b>86</b>	

## Q18 There are limited facilities for leisure and recreation in the village. It has been suggested that a playing field should be provided. Would you actively support a village playing field? Examples of support may include fund-raising, coaching, ground maintenance etc?

	Number of responses	Percentage
Yes	116	54.21%
No	98	45.79%
<b>Number of respondents</b>	<b>214</b>	

## Q18A Please say how you could contribute.

	Number of responses	Percentage
Answered	90	32.97%
<b>Number of respondents</b>	<b>90</b>	

## Q19 What other leisure or recreational facilities would you like to be available?

	Number of responses	Percentage
Answered	51	18.68%
<b>Number of respondents</b>	<b>51</b>	

## Q20 Do you use the mobile library?

	Number of responses	Percentage
Yes	25	9.47%
No	239	90.53%
<b>Number of respondents</b>	<b>264</b>	

## Q21 Would you be interested in short courses based in the village?

	Number of responses	Percentage
Yes	114	49.57%
No	116	50.43%
<b>Number of respondents</b>	<b>230</b>	

## Q21A If yes, what would interest you?

	Number of responses	Percentage
Answered	100	36.63%
<b>Number of respondents</b>	<b>100</b>	

## Q22 Have you any other suggestions or ideas relating to this section?

	Number of responses	Percentage
Answered	23	8.42%
<b>Number of respondents</b>	<b>23</b>	

# Questionnaire Results—Adults

## Q23 Is it important to preserve the history of our villages?

	Number of responses	Percentage
Yes	252	95.45%
No	12	4.55%
<b>Number of respondents</b>	<b>264</b>	

## Q24 Would you be interested in being part of a History and Heritage group that meets periodically?

	Number of responses	Percentage
Yes	95	38.31%
No	153	61.69%
<b>Number of respondents</b>	<b>248</b>	

## Q24A If yes, how do you want to be involved?

### Collecting information

	Number of responses	Percentage
Yes	51	71.83%
No	20	28.17%
<b>Number of respondents</b>	<b>71</b>	

### Sharing information you already have. Please give a brief description of what you can contribute.

	Number of responses	Percentage
Yes	10	23.81%
No	32	76.19%
<b>Number of respondents</b>	<b>42</b>	

### Helping to organise the information collected

	Number of responses	Percentage
Yes	53	77.94%
No	15	22.06%
<b>Number of respondents</b>	<b>68</b>	

## Q24B Please give a brief description of what you can contribute.

	Number of responses	Percentage
Answered	23	8.42%
<b>Number of respondents</b>	<b>23</b>	

## Q24C If no, do you have anything you would be willing to share with the group?

	Number of responses	Percentage
Yes	7	12.28%
No	50	87.72%
<b>Number of respondents</b>	<b>57</b>	

## Q24D Please say what you would be willing to share with the group

	Number of responses	Percentage
Answered	11	4.03%
<b>Number of respondents</b>	<b>11</b>	

## Q25A The Government is committed to increasing the residential housing stock over the next few years. It is likely that we will be faced with more planning applications in this area. Would you support?

### Infill development

	Number of responses	Percentage
Yes	138	55.2%
No	112	44.8%
<b>Number of respondents</b>	<b>250</b>	

### Brownfield development (redevelopment of existing sites)

	Number of responses	Percentage
Yes	195	75.58%
No	63	24.42%
<b>Number of respondents</b>	<b>258</b>	

## Greenfield development (small scale)

	Number of responses	Percentage
Yes	44	16.99%
No	215	83.01%
<b>Number of respondents</b>	<b>259</b>	

## Greenfield development (estate)

	Number of responses	Percentage
Yes	8	3.1%
No	250	96.9%
<b>Number of respondents</b>	<b>258</b>	

## Q26A Do you believe that any residential development should include provision for social, low cost housing? Strongly

	Number of responses	Percentage
Yes	90	63.38%
No	52	36.62%
<b>Number of respondents</b>	<b>142</b>	

### To a limited degree

	Number of responses	Percentage
Yes	124	81.05%
No	29	18.95%
<b>Number of respondents</b>	<b>153</b>	

### Not at all

	Number of responses	Percentage
Yes	25	29.07%
No	61	70.93%
<b>Number of respondents</b>	<b>86</b>	

## Q27 Would you support the development of retirement homes in the area?

	Number of responses	Percentage
Yes	197	76.36%
No	61	23.64%
<b>Number of respondents</b>	<b>258</b>	

## Q28 Some properties, (e.g. in the old part of Claybrooke Parva) are subject to Grade 2 listing or conservation area status, that impose further and additional planning restrictions on householders. Are there any properties or landmarks in the villages where

	Number of responses	Percentage
Yes	43	21.29%
No	159	78.71%
<b>Number of respondents</b>	<b>202</b>	

## Q28A If yes, please provide details.

	Number of responses	Percentage
Answered	41	15.02%
<b>Number of respondents</b>	<b>41</b>	

# Questionnaire Results—Adults

**Q29A Commercial/Industrial development is important for the creation of local employment. Do you support?**  
Large scale development

	Number of responses	Percentage
Yes	6	2.46%
No	238	97.54%
<b>Number of respondents</b>	<b>244</b>	

**Starter unit development (max 25 employees)**

	Number of responses	Percentage
Yes	85	35.71%
No	153	64.29%
<b>Number of respondents</b>	<b>238</b>	

**Brownfield development (redevelopment of existing sites)**

	Number of responses	Percentage
Yes	164	66.4%
No	83	33.6%
<b>Number of respondents</b>	<b>247</b>	

**Q30 The area has been subject to a number of large scale development applications over the last few years including an airport, an abattoir and a race track. Are there circumstances where you would support development of this type?**

	Number of responses	Percentage
Yes	24	8.96%
No	244	91.04%
<b>Number of respondents</b>	<b>268</b>	

**Q31 Are there any suggestions that you would like to make that should be added as conditions of planning approvals that would enhance or improve the character of the villages? Please state below:**

	Number of responses	Percentage
Answered	79	28.94%
<b>Number of respondents</b>	<b>79</b>	

**Q32 Do you feel that trees in the villages are adequately maintained and protected?**

	Number of responses	Percentage
Yes	182	74.59%
No	62	25.41%
<b>Number of respondents</b>	<b>244</b>	

**Q32A If no, please give details, including any specific trees that should have preservation orders.**

	Number of responses	Percentage
Answered	54	19.78%

**Q33 Would you like to see more trees planted?**

	Number of responses	Percentage
Yes	161	66.8%
No	80	33.2%
<b>Number of respondents</b>	<b>241</b>	

**Q33A If yes, please detail location of new planting and how you think it should be funded.**

	Number of responses	Percentage
Answered	70	25.64%
<b>Number of respondents</b>	<b>70</b>	

**Q34 Do you consider that roadside hedges and footpaths are kept in good condition?**

	Number of responses	Percentage
Yes	142	55.47%
No	114	44.53%
<b>Number of respondents</b>	<b>256</b>	

**Q34A If not, please give details (including location)**

	Number of responses	Percentage
Answered	111	40.66%
<b>Number of respondents</b>	<b>111</b>	

**Q35 Would you encourage hedges to be planted instead of close board or post and rail fencing?**

	Number of responses	Percentage
Yes	211	83.73%
No	41	16.27%
<b>Number of respondents</b>	<b>252</b>	

**Q36 Are you interested in becoming a tree warden/natural heritage warden?**

	Number of responses	Percentage
Yes	24	9.6%
No	226	90.4%
<b>Number of respondents</b>	<b>250</b>	

**Q37 Do you feel that the villages are kept tidy?**

	Number of responses	Percentage
Yes	198	77.95%
No	56	22.05%
<b>Number of respondents</b>	<b>254</b>	

**Q37A If no, please specify specific problem areas in the village.**

	Number of responses	Percentage
Answered	69	25.27%
<b>Number of respondents</b>	<b>69</b>	

**Q37B Would you be prepared to help with a regular, e.g. twice yearly, clean up scheme?**

	Number of responses	Percentage
Yes	150	63.56%
No	86	36.44%
<b>Number of respondents</b>	<b>236</b>	

**Q38A Do you consider that the village needs more of the following?**

Litter bins	Number of responses	Percentage
Yes	135	62.21%
No	82	37.79%
<b>Number of respondents</b>	<b>217</b>	

**Dog bins**

	Number of responses	Percentage
Yes	129	59.17%
No	89	40.83%
<b>Number of respondents</b>	<b>218</b>	

**Other improvements**

	Number of responses	Percentage
Yes	23	21.3%
No	85	78.7%
<b>Number of respondents</b>	<b>108</b>	

# Questionnaire Results—Adults

## Q38A If you ticked yes, please give details. Please say where you think bins should be placed.

	Number of responses	Percentage
Answered	107	39.19%
Number of respondents	107	

## Q39 Are you satisfied with the current recycling system and facilities?

	Number of responses	Percentage
Yes	137	54.58%
No	114	45.42%
Number of respondents	251	

## Q39A If no, why?

	Number of responses	Percentage
Answered	123	45.05%
Number of respondents	123	

## Q40A Would you welcome any additional recycling facilities?

Bottle bank		
	Number of responses	Percentage
Yes	63	40.91%
No	91	59.09%
Number of respondents	154	

## Textile recycling

	Number of responses	Percentage
Yes	102	59.65%
No	69	40.35%
Number of respondents	171	

## Plastic

	Number of responses	Percentage
Yes	190	80.85%
No	45	19.15%
Number of respondents	235	

## Paper/cardboard

	Number of responses	Percentage
Yes	60	39.22%
No	93	60.78%
Number of respondents	153	

## Q41 What features in the village are important to you?

	Number of responses	Percentage
Answered	151	55.31%
Number of respondents	151	

## Q42A Do you consider any of the following to be a problem?

Air pollution		
	Number of responses	Percentage
Yes	35	15.49%
No	191	84.51%
Number of respondents	226	

## Noise pollution

	Number of responses	Percentage
Yes	68	29.57%
No	162	70.43%
Number of respondents	230	

## Fly tipping

	Number of responses	Percentage
Yes	42	19.44%
No	174	80.56%
Number of respondents	216	

## Graffiti

	Number of responses	Percentage
Yes	39	18.22%
No	175	81.78%
Number of respondents	214	

## Q42A If yes, please give details.

	Number of responses	Percentage
Answered	101	37.00%
Number of respondents	101	

## Q43 Have you any other suggestions or ideas relating to this section?

	Number of responses	Percentage
Answered	27	9.89%
Number of respondents	27	

## Q44A How do you travel in and through the villages?

I walk		
	Number of responses	Percentage
Daily	62	29.11%
Often	103	48.36%
Rarely	41	19.25%
Never	7	3.29%
Number of respondents	213	

## I use car/motorcycle

	Number of responses	Percentage
Daily	187	72.76%
Often	58	22.57%
Rarely	10	3.89%
Never	2	0.78%
Number of respondents	257	

## I cycle

	Number of responses	Percentage
Daily	4	2.35%
Often	34	20.00%
Rarely	52	30.59%
Never	80	47.06%
Number of respondents	170	

## I ride a horse

	Number of responses	Percentage
Daily	1	0.62%
Often	6	3.73%
Rarely	8	4.97%
Never	146	90.68%
Number of respondents	161	

## I use buses

	Number of responses	Percentage
Daily	5	2.79%
Often	17	9.5%
Rarely	40	22.35%
Never	117	65.36%
Number of respondents	179	

## Q45 Do you consider parking is a problem outside the school?

	Number of responses	Percentage
Yes	185	75.2%
No	61	24.8%
Number of respondents	246	

# Questionnaire Results—Adults

## Q46A Parking at the school

### How effective do you think the 'no parking cones' are?

	Number of responses	Percentage
Very effective	32	14.35%
Moderately effective	93	41.7%
Limited difference	47	21.08%
No difference	31	13.9%
Not applicable	20	8.97%
<b>Number of respondents</b>	<b>223</b>	

### How effective do you think the 20mph warning sign is at school times?

	Number of responses	Percentage
Very effective	44	18.11%
Moderately effective	103	42.39%
Limited difference	58	23.87%
No difference	29	11.93%
Not applicable	9	3.7%
<b>Number of respondents</b>	<b>243</b>	

## Q46A Do you still think there is a problem?

	Number of responses	Percentage
Yes	167	81.07%
No	39	18.93%
<b>Number of respondents</b>	<b>206</b>	

## Q46B How would you resolve it?

	Number of responses	Percentage
Answered	158	57.88%
<b>Number of respondents</b>	<b>158</b>	

## Q47 Do you think a zebra crossing at the school will improve safety for school children and parents?

	Number of responses	Percentage
Yes	138	56.33%
No	107	43.67%
<b>Number of respondents</b>	<b>245</b>	

## Q48A Do you consider the following to be a problem elsewhere in the village?

Speed of traffic	Number of responses	Percentage
Yes	175	68.63%
No	80	31.37%
<b>Number of respondents</b>	<b>255</b>	

## Amount of traffic

	Number of responses	Percentage
Yes	44	20.00%
No	176	80.00%
<b>Number of respondents</b>	<b>220</b>	

## Parking elsewhere (please provide details below)

	Number of responses	Percentage
Yes	75	40.54%
No	110	59.46%
<b>Number of respondents</b>	<b>185</b>	

## Bus service

	Number of responses	Percentage
Yes	49	27.37%
No	130	72.63%
<b>Number of respondents</b>	<b>179</b>	

## Other

	Number of responses	Percentage
Yes	3	3.53%
No	82	96.47%
<b>Number of respondents</b>	<b>85</b>	

## Q48A If you have ticked yes to parking or other problems please give specific details below:

	Number of responses	Percentage
Answered	134	49.08%
<b>Number of respondents</b>	<b>134</b>	

## Q49 Do you believe we need to take action to reduce traffic speeds on our local roads?

	Number of responses	Percentage
Yes	157	62.55%
No	94	37.45%
<b>Number of respondents</b>	<b>251</b>	

## Q49A Would you be prepared to pay increased costs in your council tax to pay for this action?

	Number of responses	Percentage
Yes	68	27.98%
No	175	72.02%
<b>Number of respondents</b>	<b>243</b>	

## Q49B If yes, how much extra would you be prepared to pay per annum?

	Number of responses	Percentage
Answered	66	24.18%
<b>Number of respondents</b>	<b>66</b>	

## Q50A Enquiries suggest that Leicestershire County Council would be unlikely to approve traffic calming measures without an established record of accidents in the area.

### Have you examples of accidents during the last two years?

	Number of responses	Percentage
Yes	10	4.26%
No	225	95.74%
<b>Number of respondents</b>	<b>235</b>	

### Were these incidents reported to the police?

	Number of responses	Percentage
Yes	6	6.9%
No	81	93.1%
<b>Number of respondents</b>	<b>87</b>	

## Q50A Please give details of incident(s) below:

	Number of responses	Percentage
Answered	19	6.96%
<b>Number of respondents</b>	<b>19</b>	

## Q51 Are you willing to get actively involved, e.g. taking part in meetings with Leicestershire County Council and local residents to discuss the most appropriate action?

	Number of responses	Percentage
Yes	53	23.87%
No	169	76.13%
<b>Number of respondents</b>	<b>222</b>	

# Questionnaire Results—Adults

## Q52A What is your view about the frequency and availability of the existing bus services?

Normal buses		
	Number of responses	Percentage
Very good	24	11.59%
Good	23	11.11%
Satisfactory	28	13.53%
Poor	38	18.36%
Very poor	21	10.14%
Not applicable	73	35.27%
<b>Number of respondents</b>	<b>207</b>	

### Village link

	Number of responses	Percentage
Very good	7	4.27%
Good	10	6.1%
Satisfactory	16	9.76%
Poor	13	7.93%
Very poor	6	3.66%
Not applicable	112	68.29%
<b>Number of respondents</b>	<b>164</b>	

### Volunteer bus

	Number of responses	Percentage
Very good	10	6.1%
Good	10	6.1%
Satisfactory	15	9.15%
Poor	6	3.66%
Very poor	5	3.05%
Not applicable	118	71.95%
<b>Number of respondents</b>	<b>164</b>	

## Q52A Which, if any, of the above have you used?

	Number of responses	Percentage
Answered	114	41.76%
<b>Number of respondents</b>	<b>114</b>	

## Q53A Maintenance of roads and paths

Are there any roads which you consider need better maintenance?

	Number of responses	Percentage
Yes	86	38.05%
No	140	61.95%
<b>Number of respondents</b>	<b>226</b>	

## Are there any areas which need better lighting?

	Number of responses	Percentage
Yes	85	38.46%
No	136	61.54%
<b>Number of respondents</b>	<b>221</b>	

## Q53A If you ticked yes, please specify.

	Number of responses	Percentage
Answered	122	44.69%
<b>Number of respondents</b>	<b>122</b>	

## Q54 Would you support restricting HGV traffic from using the village as a through route?

	Number of responses	Percentage
Yes	235	90.04%
No	26	9.96%
<b>Number of respondents</b>	<b>261</b>	

## Q55 Do you think that road signage is adequate and appropriate?

	Number of responses	Percentage
Yes	214	85.26%
No	37	14.74%
<b>Number of respondents</b>	<b>251</b>	

## Q55A If no, please give details.

	Number of responses	Percentage
Answered	40	14.65%
<b>Number of respondents</b>	<b>40</b>	

## Q56A Do you feel safe in your village? Please tick appropriate box.

### In the day time

	Number of responses	Percentage
Yes	264	100.00%
No	0	0.00%
<b>Number of respondents</b>	<b>264</b>	

### In the evening

	Number of responses	Percentage
Yes	248	95.38%
No	12	4.62%
<b>Number of respondents</b>	<b>260</b>	

### After dark

	Number of responses	Percentage
Yes	221	85.33%
No	38	14.67%
<b>Number of respondents</b>	<b>259</b>	

## Q57 What would make you feel safer? Please tick box/boxes that apply.

	Number of responses	Percentage
Further street lighting	67	34.72%
Traffic calming	70	36.27%
Greater police presence	116	60.1%
Other	4	2.07%
<b>Number of respondents</b>	<b>193</b>	

## Q57A Please specify location if you think further lighting is needed or specify other things that would make you feel safer.

	Number of responses	Percentage
Answered	83	30.4%
<b>Number of respondents</b>	<b>83</b>	

# Questionnaire Results—Adults

## Q58A Have you or someone in your household been a victim of crime or anti-social behaviour?

### Theft/burglary of premises

	Number of responses	Percentage
Within last year	6	13.33%
(2 to 5 year period)	15	33.33%
(6 to 10 year period)	24	53.33%
Number of respondents	45	

### Vandalism

	Number of responses	Percentage
Within last year	21	46.67%
(2 to 5 year period)	15	33.33%
(6 to 10 year period)	9	20.00%
Number of respondents	45	

### Dogs/animals

	Number of responses	Percentage
Within last year	20	52.63%
(2 to 5 year period)	12	31.58%
(6 to 10 year period)	6	15.79%
Number of respondents	38	

### Physical violence/mugging

	Number of responses	Percentage
Within last year	0	0.00%
(2 to 5 year period)	5	35.71%
(6 to 10 year period)	9	64.29%
Number of respondents	14	

### Drugs

	Number of responses	Percentage
Within last year	1	12.5%
(2 to 5 year period)	0	0.00%
(6 to 10 year period)	7	87.5%
Number of respondents	8	

### Domestic noise

	Number of responses	Percentage
Within last year	20	60.61%
(2 to 5 year period)	5	15.15%
(6 to 10 year period)	8	24.24%
Number of respondents	33	

### Verbal nuisance/intimidation

	Number of responses	Percentage
Within last year	24	64.86%
(2 to 5 year period)	5	13.51%
(6 to 10 year period)	8	21.62%
Number of respondents	37	

### Drunkenness

	Number of responses	Percentage
Within last year	8	53.33%
(2 to 5 year period)	2	13.33%
(6 to 10 year period)	5	33.33%
Number of respondents	15	

### Car crime

	Number of responses	Percentage
Within last year	7	20.59%
(2 to 5 year period)	4	11.76%
(6 to 10 year period)	23	67.65%
Number of respondents	34	

## Traffic accident

	Number of responses	Percentage
Within last year	2	11.11%
(2 to 5 year period)	8	44.44%
(6 to 10 year period)	8	44.44%
Number of respondents	18	

## Other

	Number of responses	Percentage
Within last year	6	35.29%
(2 to 5 year period)	1	5.88%
(6 to 10 year period)	10	58.82%
Number of respondents	17	

## Q58A Please give details.

	Number of responses	Percentage
Answered	92	33.7%
Number of respondents	92	

## Q59 If you called the police, how do you rate the help you had?

	Number of responses	Percentage
Very good	9	9.38%
Good	23	23.96%
Average	26	27.08%
Poor	21	21.88%
Very poor	17	17.71%
Number of respondents	96	

## Q59A If you wish to comment further, please provide details below.

	Number of responses	Percentage
Answered	32	11.72%
Number of respondents	32	

## Q60 What is your perception of the current police service?

	Number of responses	Percentage
Not meeting your expectations	50	23.47%
Meeting a few of your expectations	53	24.88%
Meeting some of your expectations	48	22.54%
Mostly meeting your expectations	54	25.35%
Meeting all of your expectations	8	3.76%
Number of respondents	213	

## Q61 Have you heard of either special constables or community safety officers?

	Number of responses	Percentage
Yes	198	79.84%
No	50	20.16%
Number of respondents	248	

## Q62 Would you be interested in becoming a special constable or community safety officer? If yes, please indicate that you would like to be sent further information on the separate contact sheet.

	Number of responses	Percentage
Yes	5	1.99%
No	246	98.01%
Number of respondents	251	

# Questionnaire Results—Adults

**Q63 Would you be prepared to have an increase in your council tax, of say £50.00 p.a. to fund a community safety officer?**

	Number of responses	Percentage
Yes	69	28.28%
No	175	71.72%
<b>Number of respondents</b>	<b>244</b>	

**Q64 Are you prepared to distribute weekly information to, say, 20 neighbours relating to crime prevention and attend occasional meetings with the police to discuss local law and order issues (Neighbourhood Watch Scheme)?**

	Number of responses	Percentage
Yes	70	28.57%
No	175	71.43%
<b>Number of respondents</b>	<b>245</b>	

**Q65 Please comment on any areas of safety and crime which you feel has not been mentioned above.**

	Number of responses	Percentage
Answered	26	9.52%
<b>Number of respondents</b>	<b>26</b>	

**Q66A How many males are there in your household in the following age groups?**

	Number of responses	Percentage
Below school age		
0	214	95.54%
1	9	4.02%
2	1	0.45%
3	0	0.00%
4	0	0.00%
5+	0	0.00%
<b>Number of respondents</b>	<b>224</b>	

**Primary school age**

	Number of responses	Percentage
0	200	87.72%
1	26	11.4%
2	2	0.88%
3	0	0.00%
4	0	0.00%
5+	0	0.00%
<b>Number of respondents</b>	<b>228</b>	

**Secondary school age**

	Number of responses	Percentage
0	200	88.11%
1	22	9.69%
2	5	2.2%
3	0	0.00%
4	0	0.00%
5+	0	0.00%
<b>Number of respondents</b>	<b>227</b>	

**18-30**

	Number of responses	Percentage
0	203	86.02%
1	27	11.44%
2	6	2.54%
3	0	0.00%
4	0	0.00%
5+	0	0.00%
<b>Number of respondents</b>	<b>236</b>	

**31-45**

	Number of responses	Percentage
0	150	64.38%
1	83	35.62%
2	0	0.00%
3	0	0.00%
4	0	0.00%
5+	0	0.00%
<b>Number of respondents</b>	<b>233</b>	

**45-60**

	Number of responses	Percentage
0	151	61.63%
1	93	37.96%
2	1	0.41%
3	0	0.00%
4	0	0.00%
5+	0	0.00%
<b>Number of respondents</b>	<b>245</b>	

**60+**

	Number of responses	Percentage
0	152	66.67%
1	75	32.89%
2	1	0.44%
3	0	0.00%
4	0	0.00%
5+	0	0.00%
<b>Number of respondents</b>	<b>228</b>	

**Q67A How many females are there in your household in the following age groups?**

**Below school age**

	Number of responses	Percentage
0	207	93.24%
1	13	5.86%
2	2	0.9%
3	0	0.00%
4	0	0.00%
5+	0	0.00%
<b>Number of respondents</b>	<b>222</b>	

**Primary school age**

	Number of responses	Percentage
0	203	90.62%
1	19	8.48%
2	2	0.89%
3	0	0.00%
4	0	0.00%
5+	0	0.00%
<b>Number of respondents</b>	<b>224</b>	

**Secondary school**

	Number of responses	Percentage
0	204	91.07%
1	14	6.25%
2	6	2.68%
3	0	0.00%
4	0	0.00%
5+	0	0.00%
<b>Number of respondents</b>	<b>224</b>	

# Questionnaire Results—Adults

## 18-30

	Number of responses	Percentage
0	189	81.82%
1	38	16.45%
2	4	1.73%
3	0	0.00%
4	0	0.00%
5+	0	0.00%
<b>Number of respondents</b>	<b>231</b>	

## 31-45

	Number of responses	Percentage
0	148	61.41%
1	93	38.59%
2	0	0.00%
3	0	0.00%
4	0	0.00%
5+	0	0.00%
<b>Number of respondents</b>	<b>241</b>	

## 45-60

	Number of responses	Percentage
0	145	61.97%
1	89	38.03%
2	0	0.00%
3	0	0.00%
4	0	0.00%
5+	0	0.00%
<b>Number of respondents</b>	<b>234</b>	

## 60+

	Number of responses	Percentage
0	162	70.13%
1	69	29.87%
2	0	0.00%
3	0	0.00%
4	0	0.00%
5+	0	0.00%
<b>Number of respondents</b>	<b>231</b>	

**Q68 What is the current occupation of the members of your household? Please tick any that apply.**

	Number of responses	Percentage
Employed full time	172	66.41%
Self employed	43	16.6%
Employed part time	56	21.62%
Unemployed	6	2.32%
Job Seeker	5	1.93%
Retired	73	28.19%
Housewife/ Househusband	34	13.13%
In full time education	46	17.76%
Other	5	1.93%
<b>Number of respondents</b>	<b>259</b>	

**Q69 Please indicate the type of house in which you live.**

	Number of responses	Percentage
Detached house	148	56.27%
Semi-detached house	70	26.62%
Terraced house	3	1.14%
Bungalow	42	15.97%
<b>Number of respondents</b>	<b>263</b>	

## Q70 Is your property?

	Number of responses	Percentage
Tied property	1	0.38%
Privately rented	10	3.82%
Housing Association/ council rented	5	1.91%
Owner occupied	246	93.89%
<b>Number of respondents</b>	<b>262</b>	

**Q71 How long has your household lived in the Claybrookes?**

	Number of responses	Percentage
Less than a year	18	6.74%
1-5 years	55	20.6%
6-15 years	101	37.83%
Over 15 years	93	34.83%
<b>Number of respondents</b>	<b>267</b>	

**Q72 In which village do you live?**

	Number of responses	Percentage
Claybrooke Magna	170	63.43%
Claybrooke Parva	98	36.57%
<b>Number of respondents</b>	<b>268</b>	

**Q73 Do you have anything else you want to add?**

	Number of responses	Percentage
Answered	43	15.75%
<b>Number of respondents</b>	<b>43</b>	

# Questionnaire Results—Youth

## Total number of respondents 14

### Q1 Do you live in Claybroke Magna or Claybrooke Parva?

	Number of responses	Percentage
Claybrooke Magna	12	85.71%
Claybrooke Parva	2	14.29%
Number of respondents	14	

### Q2 Are you male or female?

	Number of responses	Percentage
Male	9	64.29%
Female	5	35.71%
Number of respondents	14	

### Q2A How old are you?

Average	13.79
Number of respondents	14

### Q3 Which school do you attend?

	Number of responses	Percentage
Answered	14	100.00%
Number of respondents	14	

### Q4 What do you like about living in the Claybrookes?

	Number of responses	Percentage
Answered	13	92.86%
Number of respondents	13	

### Q5 What do you not like about living in the Claybrookes?

	Number of responses	Percentage
Answered	13	92.86%
Number of respondents	13	

### Q6A Do you take part in any of the following sports or activities?

#### Football

	Number of responses	Percentage
Yes, outside the village	5	35.71%
No, but I am interested	1	7.14%
No, and I am not interested	8	57.14%
Number of respondents	14	

#### Tennis

	Number of responses	Percentage
Yes, outside the village	4	28.57%
No, but I am interested	7	50.00%
No, and I am not interested	3	21.43%
Number of respondents	14	

#### Cricket

	Number of responses	Percentage
Yes, outside the village	3	25.00%
No, but I am interested	1	8.33%
No, and I am not interested	8	66.67%
Number of respondents	12	

#### Rugby

	Number of responses	Percentage
Yes, outside the village	3	23.08%
No, but I am interested	1	7.69%
No, and I am not interested	9	69.23%
Number of respondents	13	

## Rounder's

	Number of responses	Percentage
Yes, outside the village	2	16.67%
No, but I am interested	3	25.00%
No, and I am not interested	7	58.33%
Number of respondents	12	

## Basketball

	Number of responses	Percentage
Yes, outside the village	4	33.33%
No, but I am interested	3	25.00%
No, and I am not interested	5	41.67%
Number of respondents	12	

## Netball

	Number of responses	Percentage
Yes, outside the village	2	18.18%
No, but I am interested	0	0.00%
No, and I am not interested	9	81.82%
Number of respondents	11	

## Hockey

	Number of responses	Percentage
Yes, outside the village	1	8.33%
No, but I am interested	5	41.67%
No, and I am not interested	6	50.00%
Number of respondents	12	

## HorseRiding

	Number of responses	Percentage
Yes, outside the village	1	8.33%
No, but I am interested	1	8.33%
No, and I am not interested	10	83.33%
Number of respondents	12	

## Martial Arts

	Number of responses	Percentage
Yes, outside the village	0	0.00%
No, but I am interested	5	45.45%
No, and I am not interested	6	54.55%
Number of respondents	11	

## Beavers, Cubs or Scouts

	Number of responses	Percentage
Yes, outside the village	1	9.09%
No, but I am interested	0	0.00%
No, and I am not interested	10	90.91%
Number of respondents	11	

## Rainbows, Brownies or Guides

	Number of responses	Percentage
Yes, outside the village	0	0.00%
No, but I am interested	0	0.00%
No, and I am not interested	11	100.00%
Number of respondents	11	

## Drama Group

	Number of responses	Percentage
Yes, outside the village	2	16.67%
No, but I am interested	0	0.00%
No, and I am not interested	10	83.33%
Number of respondents	12	

# Questionnaire Results—Youth

## Art Group

	Number of responses	Percentage
Yes, outside the village	1	9.09%
No, but I am interested	4	36.36%
No, and I am not interested	6	54.55%
Number of respondents	11	

## Musical activities

	Number of responses	Percentage
Yes, outside the village	2	18.18%
No, but I am interested	1	9.09%
No, and I am not interested	8	72.73%
Number of respondents	11	

## Swimming

	Number of responses	Percentage
Yes, outside the village	2	16.67%
No, but I am interested	3	25.00%
No, and I am not interested	7	58.33%
Number of respondents	12	

## Ballet or Dance

	Number of responses	Percentage
Yes, outside the village	0	0.00%
No, but I am interested	1	9.09%
No, and I am not interested	10	90.91%
Number of respondents	11	

## Youth club

	Number of responses	Percentage
Yes, outside the village	1	8.33%
No, but I am interested	6	50.00%
No, and I am not interested	5	41.67%
Number of respondents	12	

## Other

	Number of responses	Percentage
Yes, outside the village	6	66.67%
No, but I am interested	0	0.00%
No, and I am not interested	3	33.33%
Number of respondents	9	

**Q6A If you ticked other, please specify.**

responses	Percentage	Number of responses	Percentage
Answered		6	42.86%
Number of respondents		6	

## Q7 Please tick if any of the following prevents you from taking part in sports or activities.

	Number of responses	Percentage
Cost	4	33.33%
Transport	6	50.00%
Activity not available locally	7	58.33%
Disability	0	0.00%
No local playing field	11	91.67%
Other	4	33.33%
Number of respondents	12	

## Q7A If you ticked other, or would like to expand your answer please say what prevents you from doing activities or sports.

	Number of responses	Percentage
Answered	6	42.86%
Number of respondents	6	

## Q8 There is no designated open space for young people to play in Claybrooke Magna or Claybrooke Parva. If we could identify some land suitable for a playing field can you please indicate how interested you would be in using it?

	Number of responses	Percentage
Very interested	11	78.57%
Interested	2	14.29%
Not interested	1	7.14%
Number of respondents	14	

## Q8A If you ticked interested or very interested, please say how open space to play on would benefit you.

	Number of responses	Percentage
Answered	12	85.71%
Number of respondents	12	

## Q9 Where do you mostly meet up with your friends?

	Number of responses	Percentage
Answered	14	100.00%
Number of respondents	14	

## Q9AA Would you use any of the following as a meeting place or activity centre?

### Claybrooke Magna village hall

	Number of responses	Percentage
Yes	5	38.46%
No	8	61.54%
Number of respondents	13	

### Church

	Number of responses	Percentage
Yes	3	21.43%
No	11	78.57%
Number of respondents	14	

## Q10A Where do you get your information about activities and events from?

### Friends

	Number of responses	Percentage
Yes	13	100.00%
No	0	0.00%
Number of respondents	13	

### Family

	Number of responses	Percentage
Yes	12	92.31%
No	1	7.69%
Number of respondents	13	

### Notice board in village

	Number of responses	Percentage
Yes	1	8.33%
No	11	91.67%
Number of respondents	12	

### School

	Number of responses	Percentage
Yes	9	75.00%
No	3	25.00%
Number of respondents	12	

# Questionnaire Results—Youth

## Church

	Number of responses	Percentage
Yes	3	25.00%
No	9	75.00%
<b>Number of respondents</b>	<b>12</b>	

## Read local papers

	Number of responses	Percentage
Yes	6	42.86%
No	8	57.14%
<b>Number of respondents</b>	<b>14</b>	

## Internet

	Number of responses	Percentage
Yes	6	50.00%
No	6	50.00%
<b>Number of respondents</b>	<b>12</b>	

## Other

	Number of responses	Percentage
Yes	1	14.29%
No	6	85.71%
<b>Number of respondents</b>	<b>7</b>	

## Q10A If you ticked other, where do you get your information from?

	Number of responses	Percentage
Answered	0	.00%
<b>Number of respondents</b>	<b>0</b>	

## Q10B Do you have any suggestions for ways of making it easier to find out what is going on in the Claybrookes for your age group?

	Number of responses	Percentage
Answered	11	78.57%
<b>Number of respondents</b>	<b>11</b>	

## Q11A Do you feel safe in the villages?

### In the daytime

	Number of responses	Percentage
Yes, I feel safe	14	100.00%
Slightly worried	0	0.00%
No, I do not feel safe	0	0.00%
<b>Number of respondents</b>	<b>14</b>	

### In the evening

	Number of responses	Percentage
Yes, I feel safe	9	64.29%
Slightly worried	5	35.71%
No, I do not feel safe	0	0.00%
<b>Number of respondents</b>	<b>14</b>	

## Q12 Is there anything else you would like to say about topics covered in this questionnaire?

	Number of responses	Percentage
Answered	6	42.86%
<b>Number of respondents</b>	<b>6</b>	

# Questionnaire Results—Primary

## Total number of respondents 28

### Q1 Do you live in?

	Number of responses	Percentage
Claybrooke Magna	19	67.86%
Claybrooke Parva	9	32.14%
Outside of the Claybrookes	0	0.00%
<b>Number of respondents</b>	<b>28</b>	

### Q2 How old are you?

Average	7.82
<b>Number of respondents</b>	<b>28</b>

### Q3 (Are you a boy or a girl? Please tick.

	Number of responses	Percentage
Boy	15	53.57%
Girl	13	46.43%
<b>Number of respondents</b>	<b>28</b>	

### Q4A Please tick if you are involved with any of the following sports or activities.

#### Football

	Number of responses	Percentage
Yes	10	41.67%
No	14	58.33%
<b>Number of respondents</b>	<b>24</b>	

#### Tennis

	Number of responses	Percentage
Yes	3	13.64%
No	19	86.36%
<b>Number of respondents</b>	<b>22</b>	

#### Cricket

	Number of responses	Percentage
Yes	3	13.64%
No	19	86.36%
<b>Number of respondents</b>	<b>22</b>	

#### Rugby

	Number of responses	Percentage
Yes	1	4.55%
No	21	95.45%
<b>Number of respondents</b>	<b>22</b>	

#### Basketball

	Number of responses	Percentage
Yes	1	4.76%
No	20	95.24%
<b>Number of respondents</b>	<b>21</b>	

#### Netball

	Number of responses	Percentage
Yes	5	21.74%
No	18	78.26%
<b>Number of respondents</b>	<b>23</b>	

#### Horse Riding

	Number of responses	Percentage
Yes	2	9.52%
No	19	90.48%
<b>Number of respondents</b>	<b>21</b>	

## Youth Club

	Number of responses	Percentage
Yes	1	4.76%
No	20	95.24%
<b>Number of respondents</b>	<b>21</b>	

## Other

	Number of responses	Percentage
Yes	19	73.08%
No	7	26.92%
<b>Number of respondents</b>	<b>26</b>	

### Q4A If you ticked other, please say what activity or sport you take part in.

	Number of responses	Percentage
Answered	20	71.43%
<b>Number of respondents</b>	<b>20</b>	

### Q5 There is no designated open space for young people to play in Claybrooke Magna or Claybrooke Parva. If we could identify some land suitable for a playing field can you please indicate how interested you would be in using it?

	Number of responses	Percentage
Very interested	18	64.29%
Interested	7	25.00%
Not interested	3	10.71%
<b>Number of respondents</b>	<b>28</b>	

### Q5A It is very difficult to acquire land, but if it was possible to provide a playing field please can you say how you would mostly use it.

	Number of responses	Percentage
Answered	24	85.71%
<b>Number of respondents</b>	<b>24</b>	

### Q6 What do you like about the Claybrookes?

	Number of responses	Percentage
Answered	25	89.29%
<b>Number of respondents</b>	<b>25</b>	

### Q7 What do you dislike about the Claybrookes?

	Number of responses	Percentage
Answered	22	78.57%
<b>Number of respondents</b>	<b>22</b>	

### Q8 Do you have anything else to say?

	Number of responses	Percentage
Answered	11	39.29%
<b>Number of respondents</b>	<b>11</b>	