

**Key Stage  
One  
Officer Pack  
2007**

Performance Team,  
Knowledge Management, CYPS  
Richard Gretton: 0116 305 6638  
Lea Parsons : 0116 305 6481

# **KEY STAGE ONE GRAPH PACK**

## **Background**

This report provides an overview of school level, local authority and national Key Stage One attainment data. The purpose of the report is to provide basic attainment comparisons between the local and national situation and to include further analysis of attainment by gender and ethnicity.

The Key Stage One Graph Pack includes the following contents:

- Breakdown of 2007 Key Stage One attainment
- Headline contextual data for the 2007 Key Stage One cohort
- Speaking and Listening Attainment 2+ and 3+ 2003 to 2007
- Reading 2+, 2B+ and 3+ 2003 to 2007
- Writing 2+, 2B+ and 3+ 2003 to 2007
- Mathematics 2+, 2B+ and 3+ 2003 to 2007
- Science 2+ and 3+ 2003 to 2007
- Key Stage One Average Point Scores by Gender 2003 to 2007
- Key Stage One Pupil number counts by Ethnicity and Gender between 2003 and 2007
- Gender Analysis 2+, 2B+ and 3+ 2003 to 2007
- Ethnicity Analysis 2+ 2003 to 2007

## **Technical details**

1. Key Stage One attainment data is collected from schools by the LA and passed to the DCSF. All the School level and Local Authority data is derived from this data set. To allow analysis based on ethnicity the most recently available Spring School Census data has been matched into the data set. The data for 2007 at this stage of the academic year is classified as provisional.
2. The source of the National data for 2007 is the DCFS Statistical First Release SFR 26/2007 National Curriculum Assessments at Key Stage One in England, 2007 (Provisional). All historic national data has been obtained from a variety of DCSF attainment sources.
3. Included in the Graph Pack are sections on gender and ethnicity analysis. For gender analysis purposes we have highlighted where the gender gap is larger than the national average and for ethnic analysis purposes we have highlighted where headline performance is greater than or less than average national or local performance. No degree of significance is placed on the differences highlighted.
4. Also included in the analysis are FFT (Fischer Family Trust) Key Stage One Contextual Estimates for 2003 to 2006. These newly derived estimates by FFT use purely the contextual characteristics of a cohort to define estimated outcomes. Using historic data FFT have examined the outcomes at Key Stage One by pupil characteristics nationally to enable them to develop school level estimates for Key Stage One.

## **Enquiries**

Please contact the following people listed below if you wish to make any comments regarding this report or if you have any queries regarding the analysis.

As this analysis is very much developmental we would welcome any comments so that the product can improve and evolve.

### Report contacts:

<p><b>Richard Gretton</b> Statistic Manager Performance Team, Knowledge Management Children &amp; Young People's Service Leicestershire County Council</p> <p>Tel No: 0116 305 6638 E-Mail: <a href="mailto:rgretton@leics.gov.uk">rgretton@leics.gov.uk</a></p>	<p><b>Lea Parsons</b> Senior Analyst Performance Team, Knowledge Management Children &amp; Young People's Service Leicestershire County Council</p> <p>Tel No: 0116 305 6481 E-Mail: <a href="mailto:lparsons@leics.gov.uk">lparsons@leics.gov.uk</a></p>
<p><b>Lynda Smith</b> School Development Adviser School Improvement &amp; Performance Service Children &amp; Young People's Service Leicestershire County Council</p> <p>Tel No: 0116 305 6420 E-Mail: <a href="mailto:lysmith@leics.gov.uk">lysmith@leics.gov.uk</a></p>	

## Headline commentary:

Leicestershire's headline performance at 2+ and 2B+ in Reading, Writing and Maths has largely been maintained this year in comparison to last year's performance. This very much reflects the national situation as well. Leicestershire continues to perform clearly above the national average at 2+, 2B+ and 3+. Improvements in 3+ Reading and Maths have been at a faster rate than the national increases which has been an area of strength this year in Leicestershire.

Leicestershire in comparison to all Local Authorities (LAs) in England has improved its standing, last year we were just within the top 25% of LAs across all performance measure in Reading, Writing and Maths from 2+ to 3+. This year we have moved within the top 20% for each of these measures. This is due to 3+ assessment levels moving much more inline with the traditional strong performance at 2+ and 2B+ which fluctuated this year but still remains strong. Historically Leicestershire's strong performance at Key Stage One has slightly declined at the higher levels of assessment.

### Leicestershire and National Key Stage One Performance (2007 data is provisional)

	Year	2+			2B+			3+			
		Reading	Writing	Maths	Reading	Writing	Maths	Reading	Writing	Maths	
Leicestershire	2007	87	85	92	75	64	78	30	16	26	Teacher Assessments (All Schools) - Provisional
National	2007	84	80	90	71	59	74	26	13	22	
Leicestershire	2006	88	85	92	75	65	76	28	16	24	Teacher Assessments (All Schools)
National	2006	84	81	90	71	60	73	26	14	21	
Leicestershire	2005	88	86	93	76	65	76	29	16	25	Teacher Assessments (All Schools)
National	2005	85	82	91	72	62	74	27	15	23	
Leicestershire	2004	88	87	92	75	66	78	29	17	28	Combined Teacher Assessments (Trial schools) and Task/Test results (Non-trial schools)
National	2004	85	82	90	71	62	75	29	16	28	
Leicestershire	2003	86	84	92	73	65	77	31	17	31	Task/Test (All schools)
National	2003	84	81	90	69	62	73	28	16	29	
Leicestershire	2002	85	88	92	72	64	78	31	9	33	Task/Test (All schools)
National	2002	84	86	90	69	60	76	30	9	31	
Leicestershire	2001	86	87	92	71	61	78	30	8	29	Task/Test (All schools)
National	2001	84	86	91	69	59	75	29	9	28	

### Leicestershire's Key Stage One Performance (Rankings) against all LAs and Statistical Neighbour LAs (2007 data is provisional) (1 = highest ranked, 150 = lowest ranked)

	Year	2+			2B+			3+			LAs	
		Reading	Writing	Maths	Reading	Writing	Maths	Reading	Writing	Maths		
National	2007	21	14	27	24	21	21	26	17	26	150	Teacher Assessments (All Schools) - Provisional
New CS Stat. N'bours	2007	3	2	5	4	3	4	5	3	4	11	
National	2006	14	20	25	21	19	33	36	28	32	150	Teacher Assessments (All Schools)
New CS Stat. N'bours	2006	2	2	2	3	3	6	8	4	6	11	
Stat. N'bours	2006	2	2	2	3	3	6	6	4	5	11	
National	2005	19	18	18	23	32	42	42	46	38	150	Teacher Assessments (All Schools)
New CS Stat. N'bours	2005	3	2	2	4	6	8	7	5	5	11	
Stat. N'bours	2005	2	2	2	4	5	8	6	6	7	11	
National	2004	18	6	23	19	16	30	54	37	63	150	Combined Teacher Assessments (Trial schools) and Task/Test results (Non-trial)
Stat. N'bours	2004	4	2	2	4	3	4	8	7	7	11	
National	2003	34	29	23	18	34	20	24	43	35	150	Task/Test (All schools)
Stat. N'bours	2003	6	4	3	4	5	2	5	7	5	11	
National	2002	51	31	17	28	23	32	48	65	34	150	Task/Test (All schools)
Stat. N'bours	2002	8	6	2	5	5	5	6	9	6	11	
National	2001	34	46	33	40	38	34	44	77	46	150	Task/Test (All schools)
Stat. N'bours	2001	6	6	3	6	6	5	7	10	6	11	

Notes: New CS Stat. N'bours (New Children Services Statistical Neighbours) relates to the new set of Statistical Neighbours issued in March 2007 by the DCSF following the revision of the previous Ofsted model to enable Children's Services Performance comparisons. "Stat. N'bours" relates to the previous Ofsted Statistical Neighbours that formed the basis of benchmarking comparisons prior to 2006.

Within Leicestershire, performance by gender at Key Stage One continues to be significantly above the national performance levels in terms of Reading, Writing, Maths, Science, and Speaking and Listening. Boys Reading at 2B+ and 3+ has showed improvements leading to a narrowing of the local gender gap. Girls Writing locally and nationally has declined across 2+ and 2B+ leading again to the gender gap narrowing. Maths in Leicestershire in

2007 experienced the greatest improvements with a 2% increase for boys and 3% increase for girls at 3+, and a 1% boys increase and a 2% girls increase at 2B+.

Overall the gender gap in Leicestershire is narrowing and improvements at higher levels of assessments are occurring in boys Reading and significantly across the genders in terms of Maths. These improvements are being made within the context of Leicestershire already being a very high performing Local Authority at this Key Stage.

Ethnic attainment analysis using the 2006 national data highlights performance across all ethnic groups continues to be significantly higher than the national averages in Reading, Writing and Maths. The largest positive differences in performance can be found in the Black and Minority Ethnic (BME) cohorts.

## **Subject commentary:**

### **Speaking and Listening**

National performance has been at a level state/slight decline over the last 5 years. Locally the rate has remained unchanged since 2005, currently standing at 90% for 2+ and 24% for 3+. This stable level of assessment is also observable when performance is analysed by gender.

Leicestershire continues to be above the national average for the subject across 2+ and 3+ measures, and by gender.

### **Reading**

Assessment levels at 2+ and 2B+ have remained stable over the last 4 years locally and nationally with Leicestershire this year outperforming the national performance at 3+ with a 2% increase to 30% compared to no movement nationally, assessments staying at 26%.

The gender gap across the range of assessment measures continues to narrow locally at a faster rate than nationally due to 1% increases in boys 2B+ performance to 70% and at 3+ to 25%. Girls performance in Leicestershire declined by 2% at 2+ and 1% at 2B+. The decline in girls performance was contrary to the national performance.

Leicestershire continues to be above the national average for the subject across 2+ to 3+ measures, and by gender.

### **Writing**

Nationally boys assessment levels have declined, locally they have remained the same as last year, which for both boys and girls are above the national average by significant levels. Girls performance in Leicestershire has declined by a larger degree than the national decline. Overall the gender gap at 2B+ and 3+ is declining locally and nationally. The subject though still has the largest differential of any Key Stage One subject. Compared to Leicestershire's performance in Reading and Writing this subject over the last two years has become our strongest comparable performance against other Local Authorities, replacing Reading as the main strength.

### **Mathematics**

Boys Maths in Leicestershire is an area of strength, remaining at 92% at 2+ whereas a decline has occurred nationally. A 2% increase has occurred at 3+ whereas nationally no change occurred. Girls performance has remained strong with an increase of 2+ to 29% at 2B+ against a national 1% increase, and a 3% increase to 23% at 3+ compared to also a national 1% increase.

Leicestershire continues to be above the national average for the subject across 2+ to 3+ measures, and by gender.

### **Science**

Science continues to have the lowest level of differential by gender. At 2+ and 3+ the national trend has been a slight decline over the last 5 years, in Leicestershire increases have been observed. Science overall has the largest level of differential between local and national performance at 2+ and 3+ for any of the Key Stage One subjects. This emphasises the strength of assessment outcomes in relation to this subject in Leicestershire.

# Key Stage One Results 2007: Percentage of seven year olds in school

855 Leicestershire

## Achievement Data

Boys	A	D	W	1	2	3	4+	2c	2b	2a	Level 2 & above	Level 2b & above	Level 3 & above	Average Points
Speaking & Listening	0	0	2	10	68	20	0	-	-	-	88.0	-	20.3	15.4
Reading	0	0	3	14	58	25	0	13	21	24	83.6	70.3	25.3	15.6
Writing	0	0	4	15	69	11	0	23	29	17	80.1	56.8	10.8	14.1
Overall Mathematics	0	0	2	7	63	29	0	15	22	27	91.5	76.9	28.7	16.4
Overall Science	0*	*	1	6	62	31	0	-	-	-	92.1	-	30.5	16.3

Girls	A	D	W	1	2	3	4+	2c	2b	2a	Level 2 & above	Level 2b & above	Level 3 & above	Average Points
Speaking & Listening	0	0	1	6	65	28	0	-	-	-	93.0	-	28.1	16.2
Reading	0	0	1	8	56	34	0	10	20	27	90.5	80.7	34.2	16.8
Writing	0	0	2	8	70	20	0	18	28	23	90.2	72.1	20.5	15.6
Overall Mathematics	0	0	1	5	70	23	0	14	25	31	93.2	79.1	23.0	16.3
Overall Science	0*	*	1	5	66	28	0	-	-	-	93.5	-	28.0	16.3

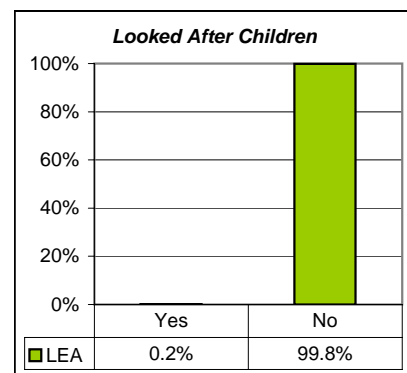
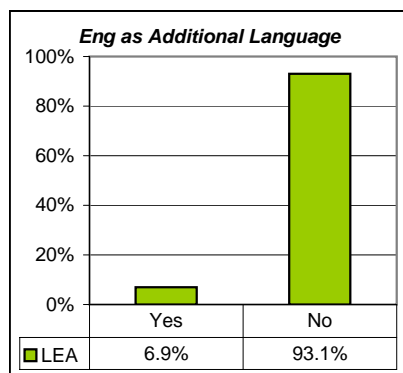
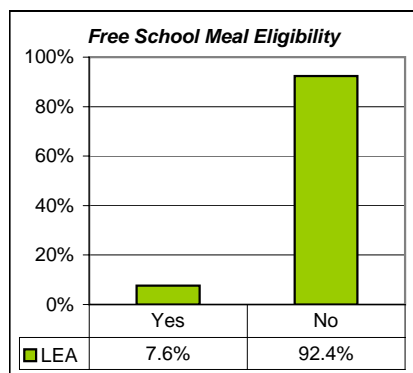
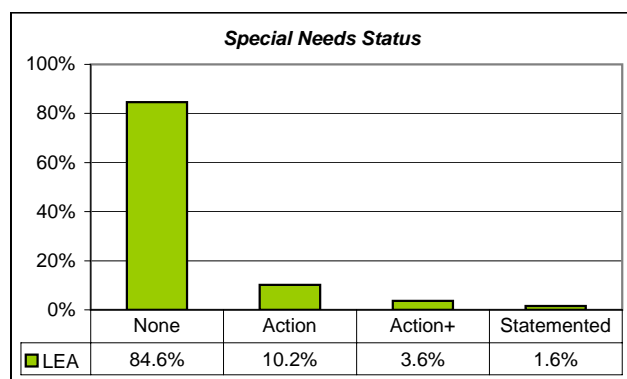
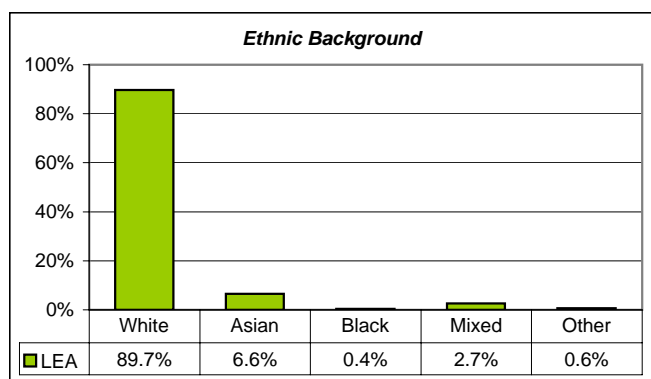
Boys & Girls	A	D	W	1	2	3	4+	2c	2b	2a	Level 2 & above	Level 2b & above	Level 3 & above	Average Points
Speaking & Listening	0	0	1	8	66	24	0	-	-	-	90.4	-	24.1	15.8
Reading	0	0	2	11	57	30	0	12	21	25	87.0	75.4	29.7	16.2
Writing	0	0	3	12	69	16	0	21	28	20	85.0	64.3	15.5	14.8
Overall Mathematics	0	0	1	6	66	26	0	14	23	29	92.4	77.9	25.9	16.3
Overall Science	0*	*	1	6	64	29	0	-	-	-	92.8	-	29.3	16.3

\* Absent and Disapplied combined for Science

### Note:

Data relates to all Leicestershire schools, including special schools.

## School Census 2007 Contextual Data [Matched Pupils: 100%]



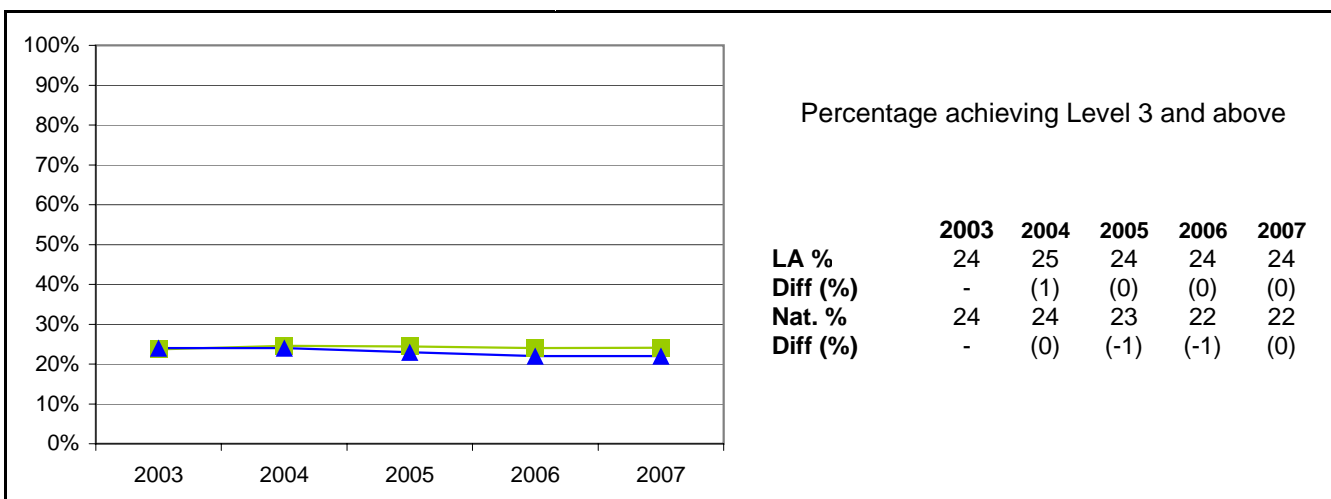
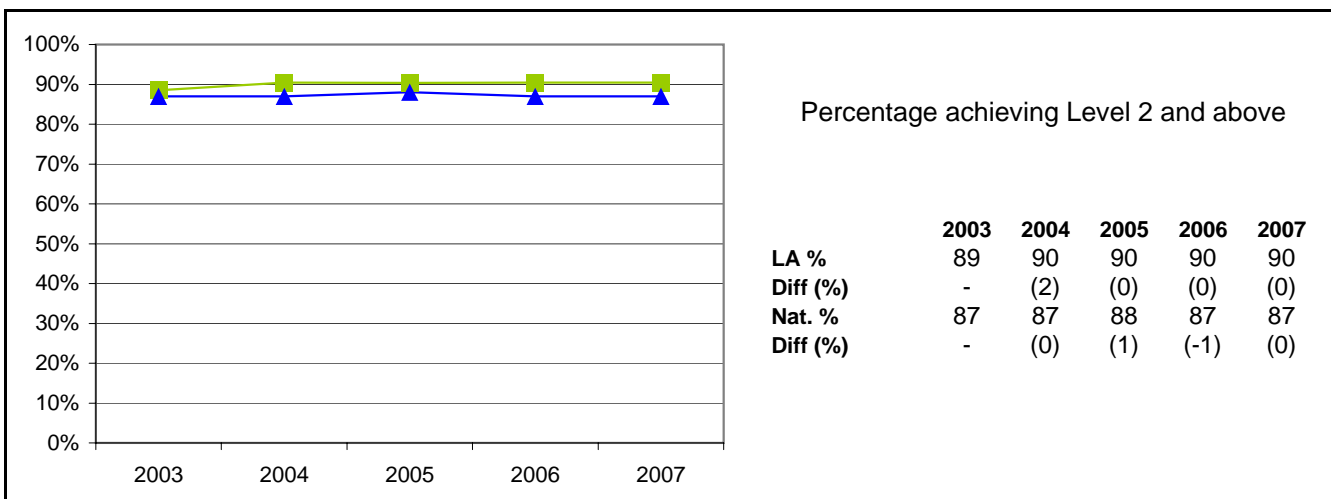
### Note:

The contextual data relates to the Key Stage One Cohort only

Ethnic Background does not include Refused and Information Not Obtained Classified pupils

# Key Stage One Results 2003 - 2007: Speaking and Listening

855 Leicestershire



**Note:**

Leicestershire/National attainment for 2005 - 2007 based on Teacher Assessments

Leicestershire/National attainment for 2004 based on Teacher Assessments for Trial Schools (223 schools) and Task/Test for Non-Trial schools (2 schools)

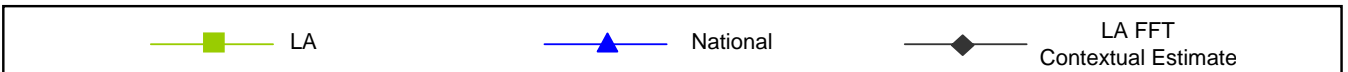
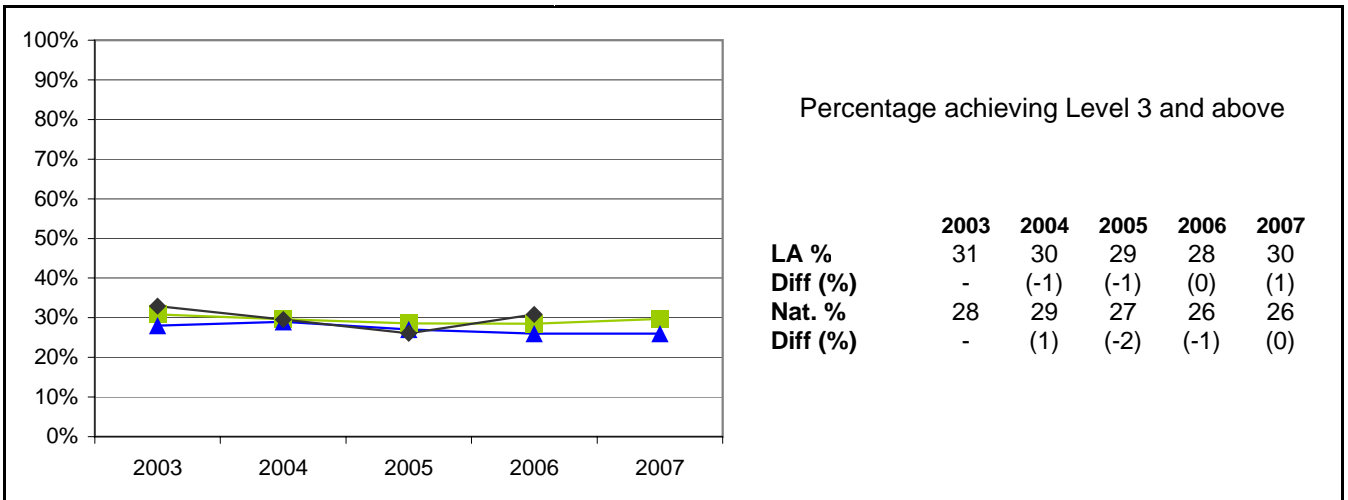
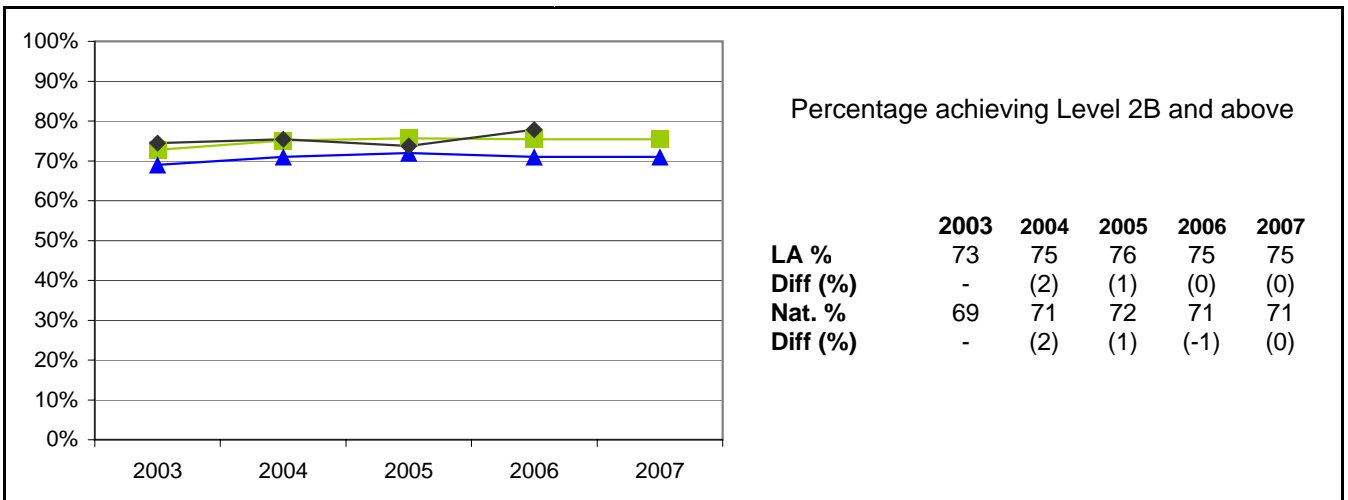
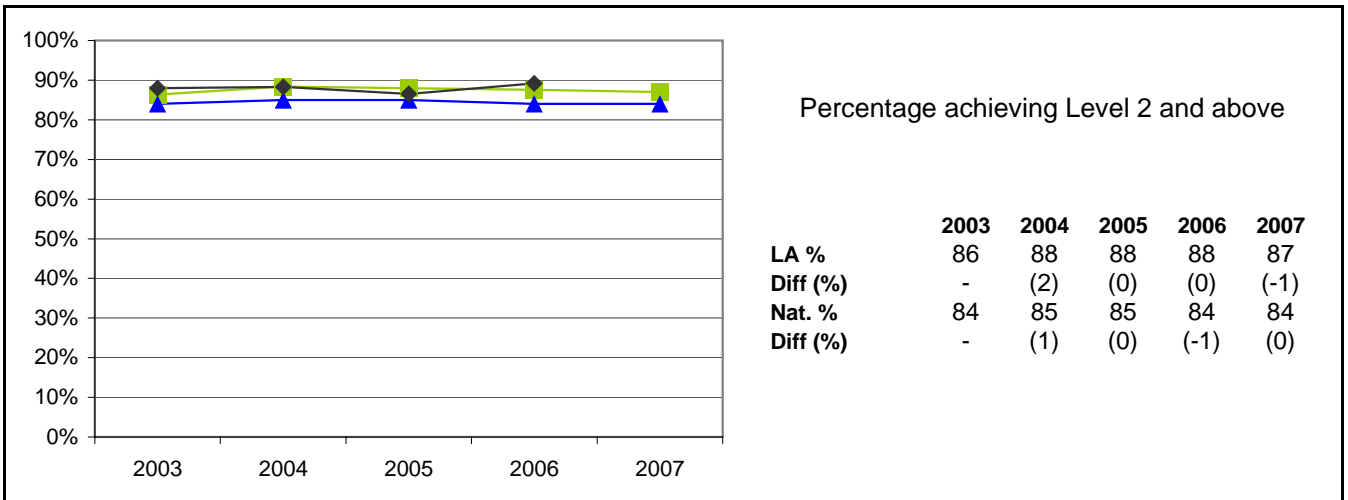
Leicestershire/National attainment for pre-2004 based on Task/Test data

All attainment figures for Key Stage One include data from all schools with eligible Year 2 pupils, including special schools and the PRU

National figures are based on the information published within the SFR 26/2007, National Curriculum Assessments at Key Stage 1 in England, 2007 (Provisional)

# Key Stage One Results 2003 - 2007: Reading

855 Leicestershire



**Note:**

Leicestershire/National attainment for 2005 - 2007 based on Teacher Assessments

Leicestershire/National attainment for 2004 based on Teacher Assessments for Trial Schools (223 schools) and Task/Test for Non-Trial schools (2 schools)

Leicestershire/National attainment for pre-2004 based on Task/Test data

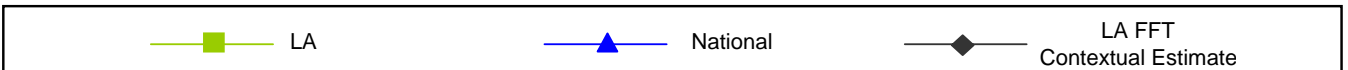
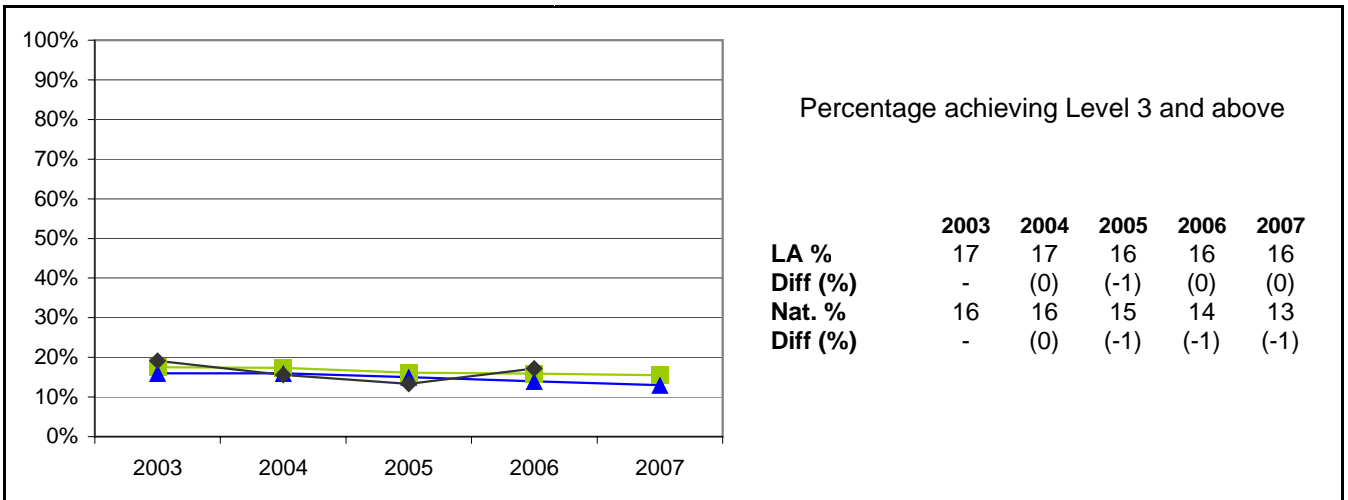
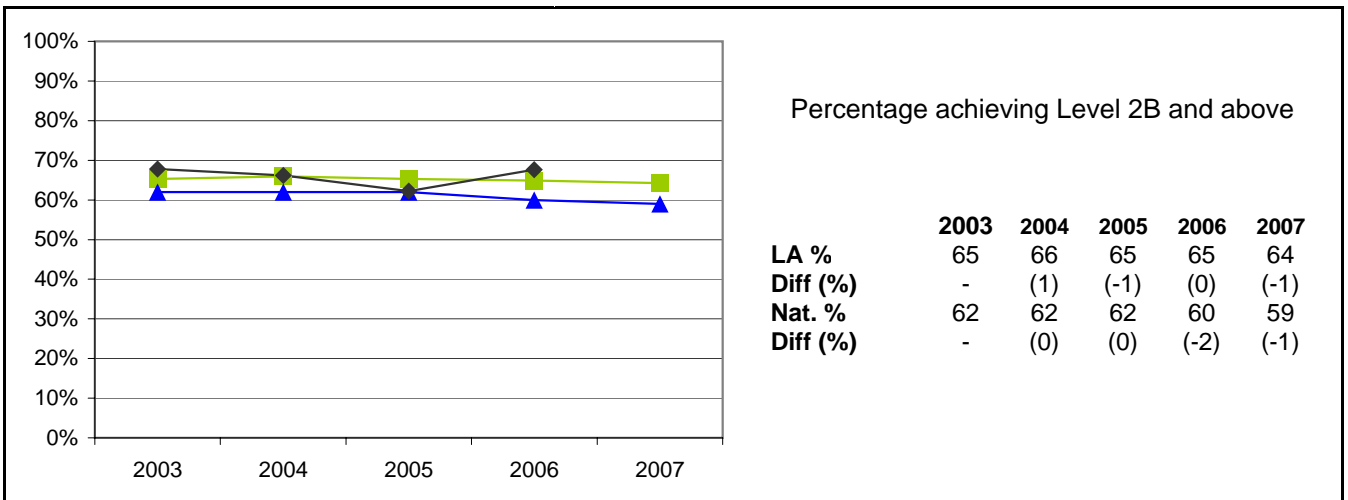
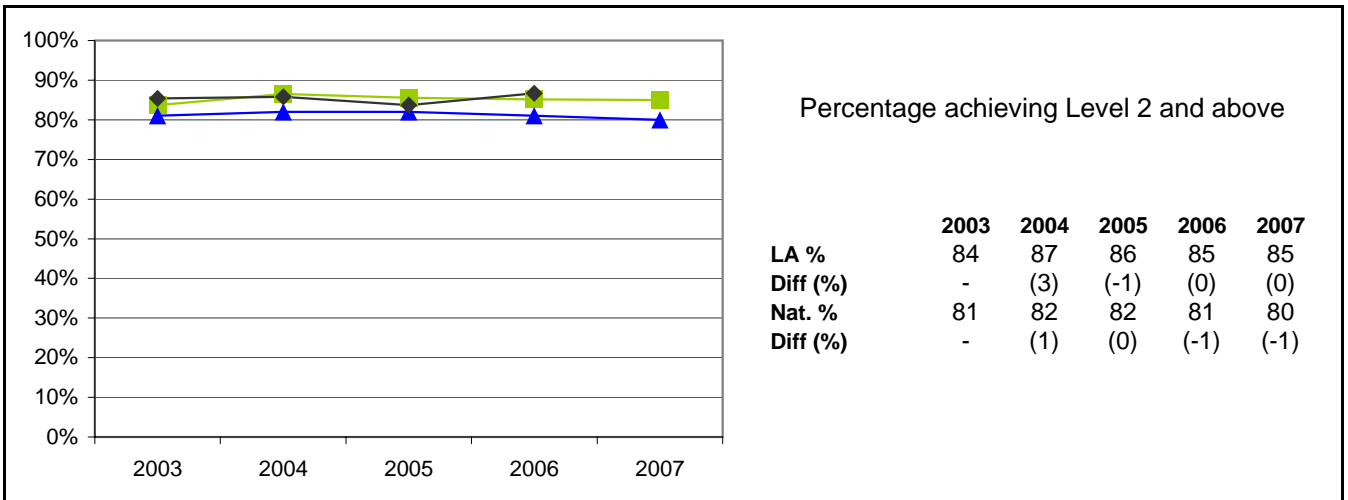
All attainment figures for Key Stage One include data from all schools with eligible Year 2 pupils, including special schools and the PRU

National figures are based on the information published within the SFR 26/2007, National Curriculum Assessments at Key Stage 1 in England, 2007 (Provisional)

For each year, where available on FFT (Fischer Family Trust), a Contextual Estimate has been included. This estimate does not utilise prior attainment but is based on outcomes of pupils using contextual characteristics as the sole basis.

# Key Stage One Results 2003 - 2007: Writing

855 Leicestershire



**Note:**

Leicestershire/National attainment for 2005 - 2007 based on Teacher Assessments

Leicestershire/National attainment for 2004 based on Teacher Assessments for Trial Schools (223 schools) and Task/Test for Non-Trial schools (2 schools)

Leicestershire/National attainment for pre-2004 based on Task/Test data

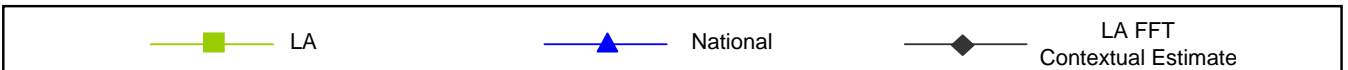
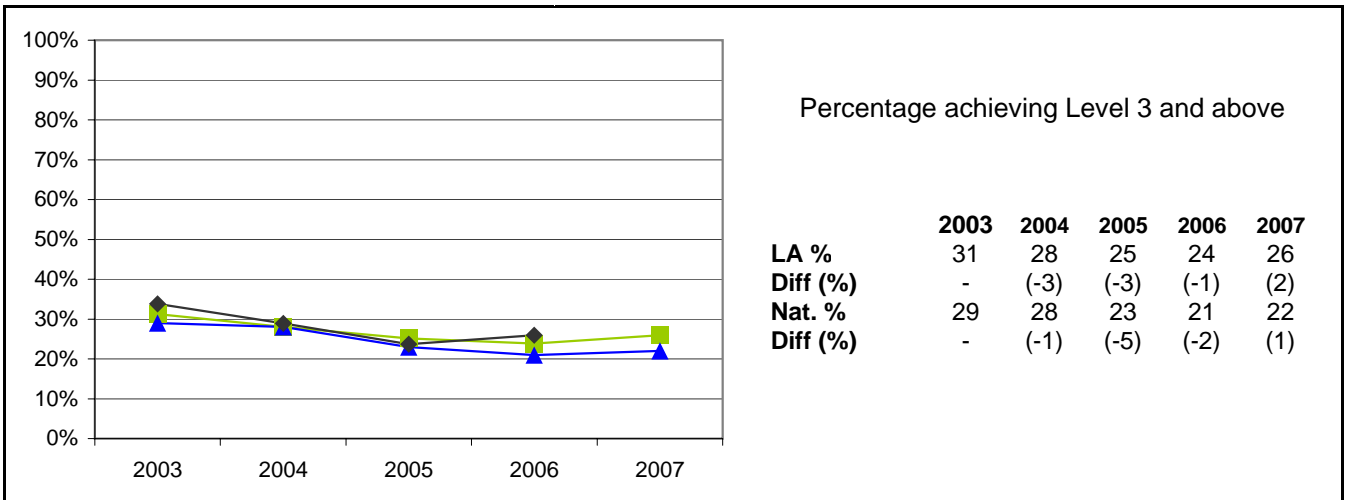
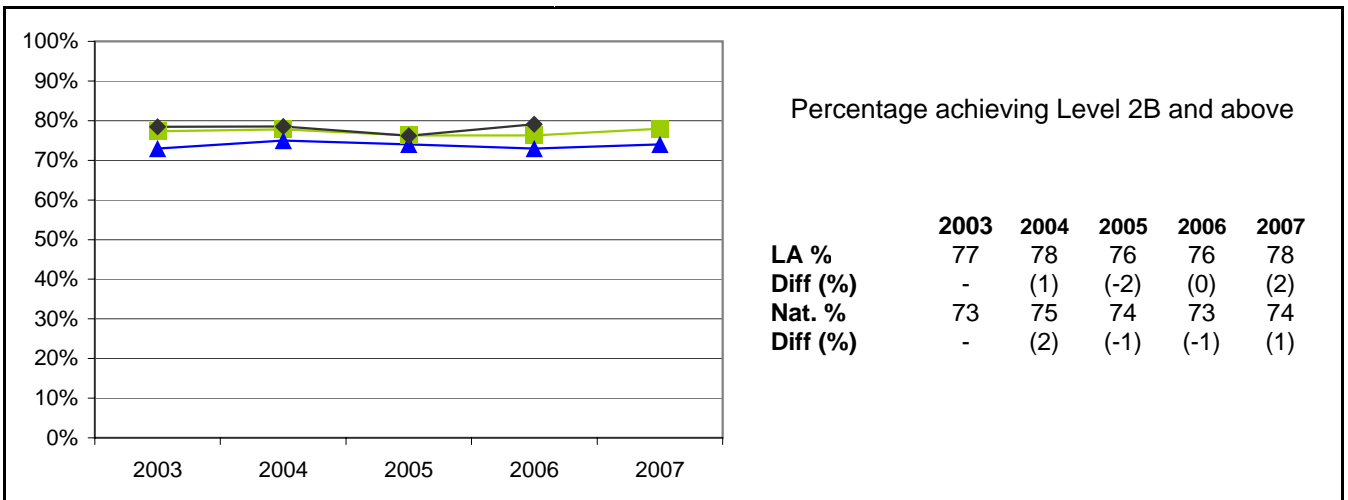
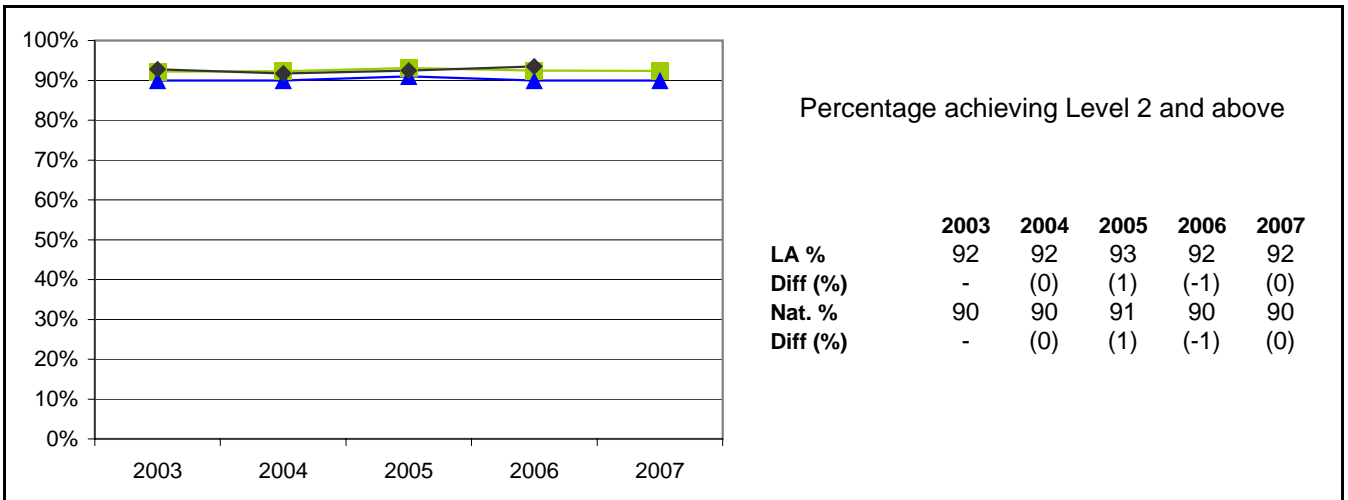
All attainment figures for Key Stage One include data from all schools with eligible Year 2 pupils, including special schools and the PRU

National figures are based on the information published within the SFR 26/2007, National Curriculum Assessments at Key Stage 1 in England, 2007 (Provisional)

For each year, where available on FFT (Fischer Family Trust), a Contextual Estimate has been included. This estimate does not utilise prior attainment but is based on outcomes of pupils using contextual characteristics as the sole basis.

# Key Stage One Results 2003 - 2007: Mathematics

855 Leicestershire



**Note:**

Leicestershire/National attainment for 2005 - 2007 based on Teacher Assessments

Leicestershire/National attainment for 2004 based on Teacher Assessments for Trial Schools (223 schools) and Task/Test for Non-Trial schools (2 schools)

Leicestershire/National attainment for pre-2004 based on Task/Test data

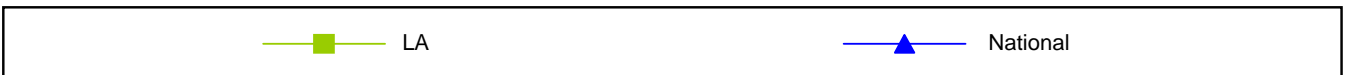
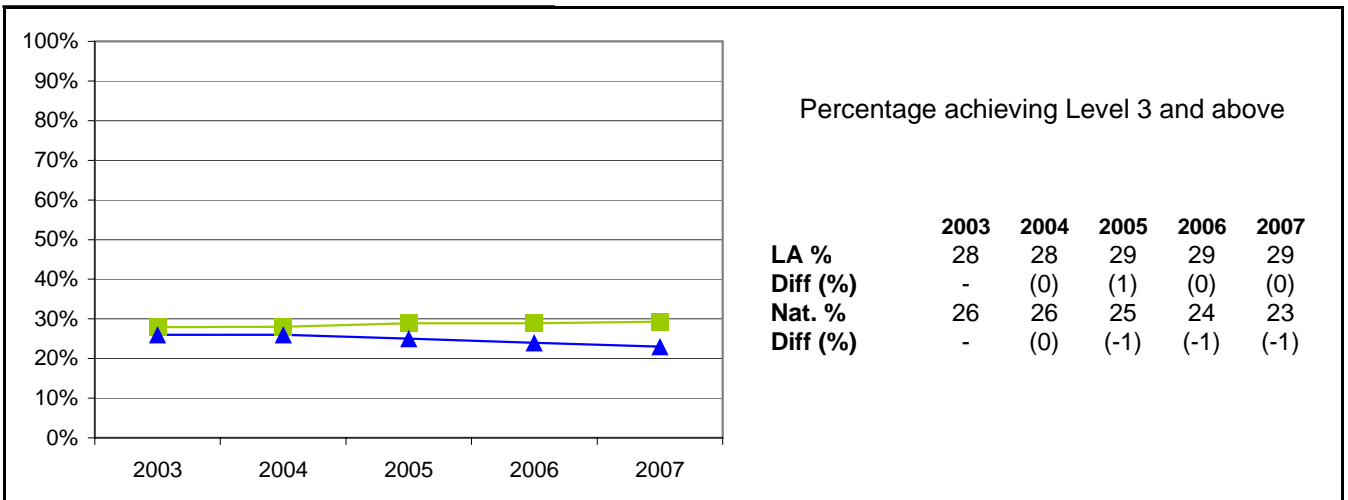
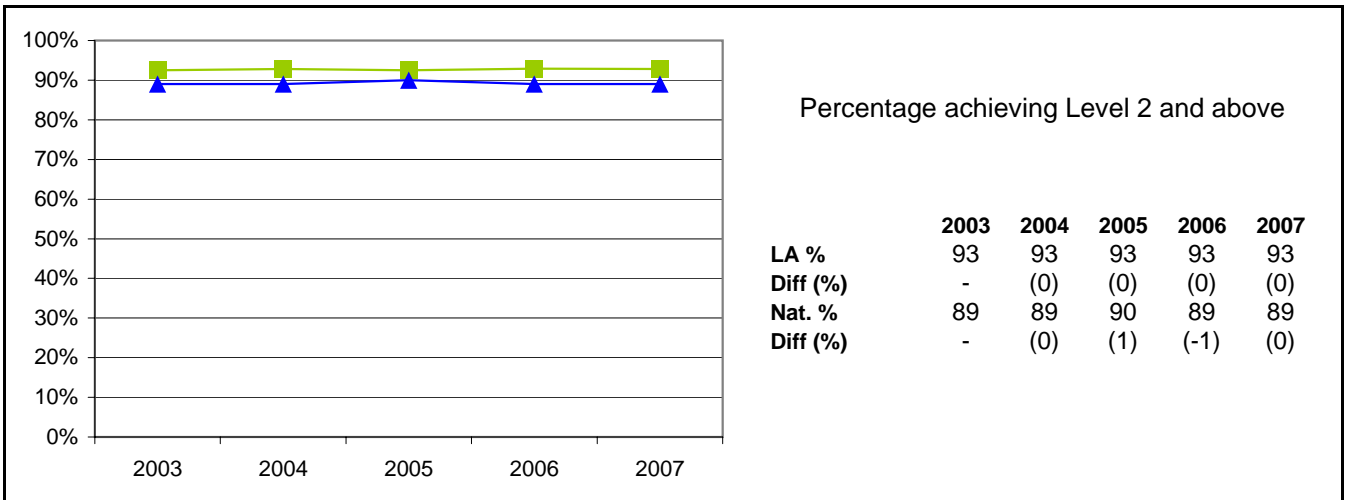
All attainment figures for Key Stage One include data from all schools with eligible Year 2 pupils, including special schools and the PRU

National figures are based on the information published within the SFR 26/2007, National Curriculum Assessments at Key Stage 1 in England, 2007 (Provisional)

For each year, where available on FFT (Fischer Family Trust), a Contextual Estimate has been included. This estimate does not utilise prior attainment but is based on outcomes of pupils using contextual characteristics as the sole basis.

# Key Stage One Results 2003 - 2007: Science

855 Leicestershire



**Note:**

Leicestershire/National attainment for 2005 - 2007 based on Teacher Assessments

Leicestershire/National attainment for 2004 based on Teacher Assessments for Trial Schools (223 schools) and Task/Test for Non-Trial schools (2 schools)

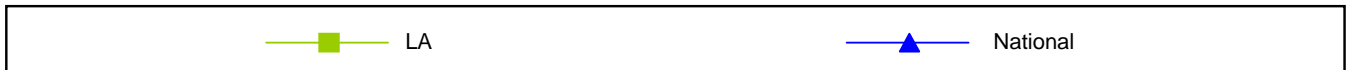
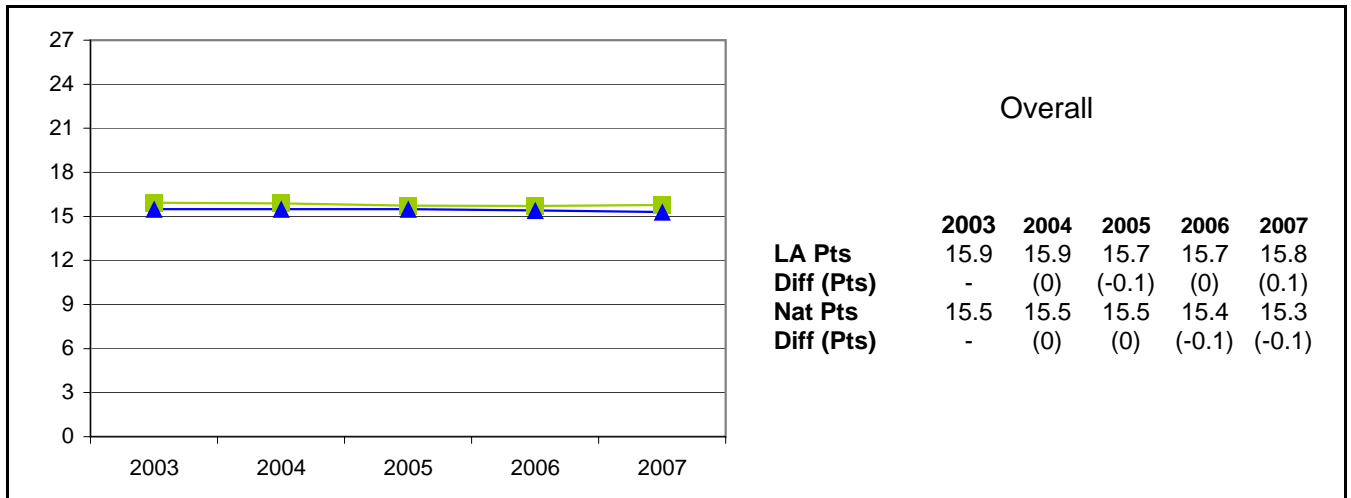
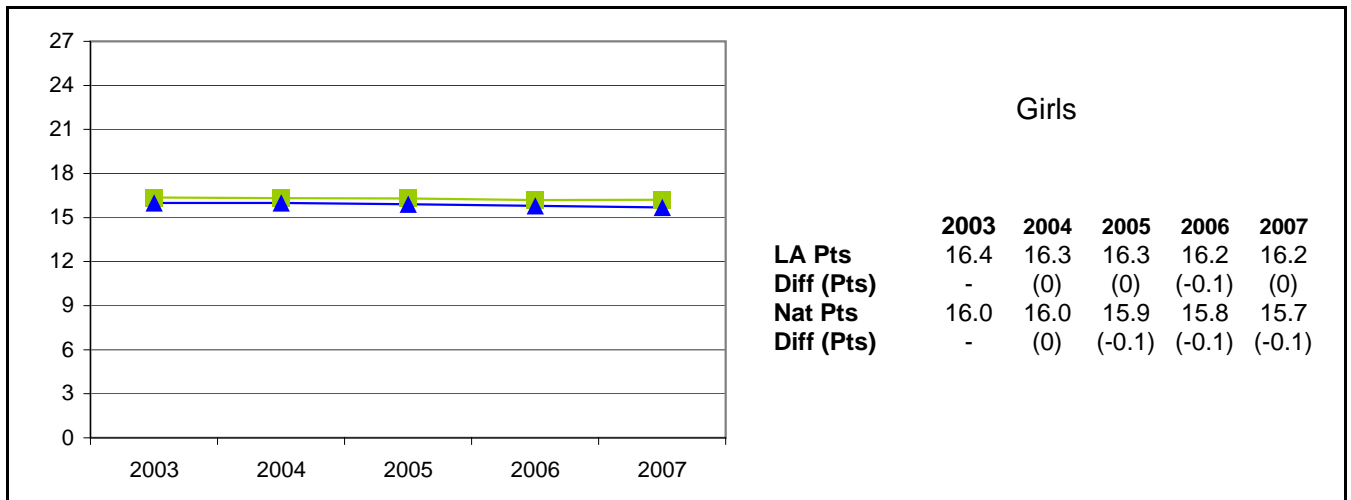
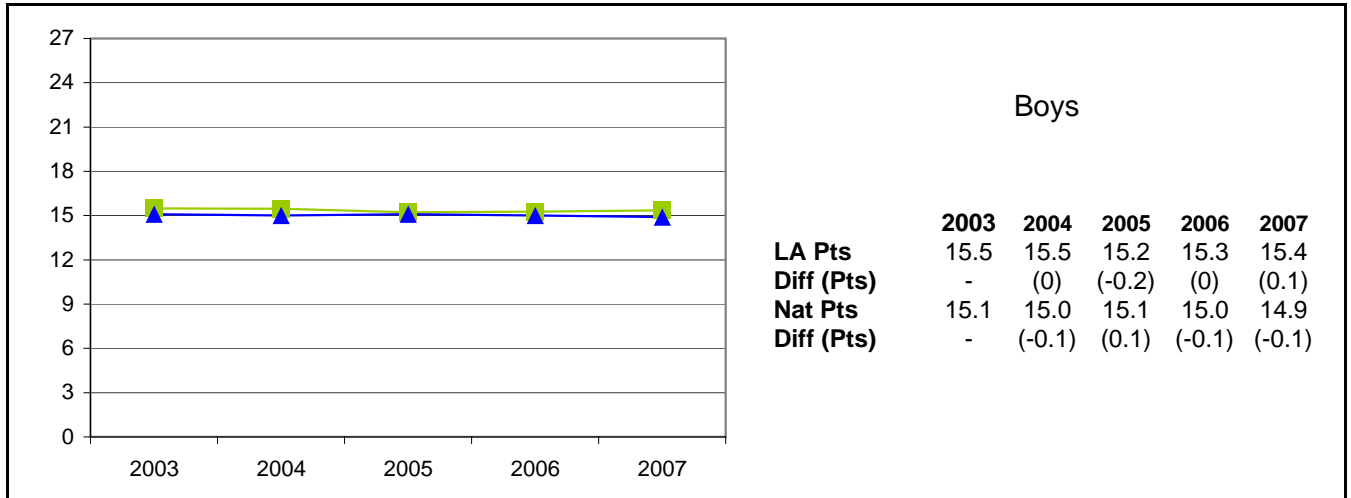
Leicestershire/National attainment for pre-2004 based on Task/Test data

All attainment figures for Key Stage One include data from all schools with eligible Year 2 pupils, including special schools and the PRU

National figures are based on the information published within the SFR 26/2007, National Curriculum Assessments at Key Stage 1 in England, 2007 (Provisional)

# Key Stage One Results 2003 - 2007: Average Point Score

855 Leicestershire



**Note:**

Leicestershire/National attainment for 2005 and 2006 based on Teacher Assessments

Leicestershire/National attainment for 2004 based on Teacher Assessments for Trial Schools (223 schools) and Task/Test for Non-Trial schools (2 schools)

Leicestershire/National attainment for pre-2004 based on Task/Test data

All attainment figures for Key Stage One include data from all schools with eligible Year 2 pupils, including special schools and the PRU

National figures are based on the information published within the SFR 26/2007, National Curriculum Assessments at Key Stage 1 in England, 2007 (Provisional)

## Key Stage One Results 2003 - 2007: Pupil Numbers (Gender & Ethnicity)

855 Leicestershire

Gender	LA				
	2003	2004	2005	2006	2007
Boys	3,647	3,660	3,703	3,644	3,511
Girls	3,491	3,441	3,393	3,493	3,345
All	7,138	7,101	7,096	7,137	6,856

Ethnicity	LA				
	2003	2004	2005	2006	2007
White British	5,924	6,076	6,155	6,224	5,937
Irish	14	12	19	15	10
Any other White background	117	130	111	168	165
Total White	6,055	6,218	6,285	6,411	6,112
White and Black African	53	61	58	52	52
White and Black Caribbean	10	10	14	14	13
White and Asian	56	51	75	72	61
Any other Mixed background	47	64	40	53	56
Total Mixed	166	186	187	191	182
Indian	302	328	344	297	337
Pakistani	19	21	24	21	24
Bangladeshi	33	40	43	49	37
Any other Asian background	20	35	41	42	50
Total Asian	374	424	452	410	448
Black Caribbean	6	8	10	5	6
Black African	10	8	11	17	17
Any other Black background	2	3	1	4	6
Total Black	18	19	22	26	29
Chinese	21	24	33	20	16
Any other ethnic group	20	23	20	24	27
Unclassified	484	207	97	55	42
All pupils	7,138	7,101	7,096	7,137	6,856

**Note:**

Data relates to KS1 cohort only

Notes: LA data for each year relates to all schools (including special schools and the PRU).

# Key Stage One Results 2003 - 2007 Gender Analysis: Reading and Writing

855 Leicestershire

## Reading

### Boys

Level	LA					National				
	2003	2004	2005	2006	2007	2003	2004	2005	2006	2007
2+	83%	85%	84%	84%	84%	80%	81%	81%	80%	80%
2B+	68%	69%	70%	69%	70%	64%	65%	67%	66%	66%
3	27%	25%	23%	24%	25%	24%	24%	22%	21%	22%

### Girls

Level	LA					National				
	2003	2004	2005	2006	2007	2003	2004	2005	2006	2007
2+	90%	92%	92%	92%	90%	88%	88%	89%	89%	88%
2B+	78%	81%	82%	82%	81%	75%	76%	78%	77%	77%
3	35%	35%	35%	34%	34%	33%	33%	32%	30%	30%

### Gender Gap

Level	LA					National				
	2003	2004	2005	2006	2007	2003	2004	2005	2006	2007
2+	-7%	-8%	-8%	-8%	-7%	-8%	-7%	-8%	-9%	-8%
2B+	-10%	-12%	-11%	-12%	-10%	-11%	-11%	-11%	-11%	-11%
3	-9%	-10%	-12%	-10%	-9%	-9%	-9%	-10%	-9%	-8%

## Writing

### Boys

Level	LA					National				
	2003	2004	2005	2006	2007	2003	2004	2005	2006	2007
2+	79%	82%	81%	80%	80%	76%	77%	77%	76%	75%
2B+	58%	58%	57%	57%	57%	54%	54%	54%	52%	51%
3	12%	12%	10%	11%	11%	11%	11%	10%	9%	9%

### Girls

Level	LA					National				
	2003	2004	2005	2006	2007	2003	2004	2005	2006	2007
2+	89%	91%	91%	91%	90%	87%	87%	88%	87%	86%
2B+	73%	74%	75%	73%	72%	70%	70%	70%	69%	67%
3	23%	23%	23%	21%	21%	21%	21%	20%	19%	17%

### Gender Gap

Level	LA					National				
	2003	2004	2005	2006	2007	2003	2004	2005	2006	2007
2+	-10%	-9%	-10%	-10%	-10%	-11%	-10%	-11%	-11%	-11%
2B+	-15%	-16%	-18%	-16%	-15%	-16%	-16%	-16%	-17%	-16%
3	-11%	-12%	-13%	-10%	-10%	-10%	-10%	-10%	-10%	-8%

 Gender gap less than national gender gap

 Gender gap greater than national gender gap

#### Note:

Leicestershire/National attainment for 2005 - 2007 based on Teacher Assessments

Leicestershire/National attainment for 2004 based on Teacher Assessments for Trial Schools (223 schools) and Task/Test for Non-Trial schools (2 schools)

Leicestershire/National attainment for pre-2004 based on Task/Test data

All attainment figures for Key Stage One include data from all schools with eligible Year 2 pupils, including special schools and the PRU

National figures are based on the information published within the SFR 26/2007, National Curriculum Assessments at Key Stage 1 in England, 2007 (Provisional)

Gender gap is the difference between boys' attainment compared to girls' attainment

# Key Stage One Results 2003 - 2007 Gender Analysis: Mathematics

855 Leicestershire

## Mathematics

### Boys


Level	LA					National				
	2003	2004	2005	2006	2007	2003	2004	2005	2006	2007
2+	92%	91%	92%	92%	92%	89%	90%	90%	89%	88%
2B+	77%	77%	75%	76%	77%	73%	75%	73%	72%	73%
3	34%	32%	27%	27%	29%	32%	31%	25%	24%	24%

### Girls

Level	LA					National				
	2003	2004	2005	2006	2007	2003	2004	2005	2006	2007
2+	93%	93%	94%	93%	93%	91%	91%	92%	92%	91%
2B+	77%	78%	77%	77%	79%	74%	76%	75%	74%	75%
3	29%	24%	23%	20%	23%	27%	25%	20%	19%	20%

### Gender Gap

Level	LA					National				
	2003	2004	2005	2006	2007	2003	2004	2005	2006	2007
2+	-1%	-2%	-2%	-2%	-2%	-2%	-1%	-2%	-3%	-3%
2B+	0%	-1%	-2%	-1%	-2%	-1%	-1%	-2%	-2%	-2%
3	5%	7%	4%	7%	6%	5%	6%	5%	5%	4%

 Gender gap less than national gender gap

 Gender gap greater than national gender gap

#### Note:

Leicestershire/National attainment for 2005 - 2007 based on Teacher Assessments

Leicestershire/National attainment for 2004 based on Teacher Assessments for Trial Schools (223 schools) and Task/Test for Non-Trial schools (2 schools)

Leicestershire/National attainment for pre-2004 based on Task/Test data

All attainment figures for Key Stage One include data from all schools with eligible Year 2 pupils, including special schools and the PRU

National figures are based on the information published within the SFR 26/2007, National Curriculum Assessments at Key Stage 1 in England, 2007 (Provisional)

Gender gap is the difference between boys' attainment compared to girls' attainment

# Key Stage One Results 2003 - 2007 Gender Analysis: Speaking & Listening and Science

855 Leicestershire

## Speaking & Listening

### Boys

Level	LA					National				
	2003	2004	2005	2006	2007	2003	2004	2005	2006	2007
2+	86%	88%	87%	88%	88%	84%	84%	85%	84%	84%
2B+	-	-	-	-	-	-	-	-	-	-
3	20%	20%	19%	21%	20%	20%	20%	19%	19%	18%

### Girls

Level	LA					National				
	2003	2004	2005	2006	2007	2003	2004	2005	2006	2007
2+	91%	93%	94%	93%	93%	90%	90%	91%	90%	90%
2B+	-	-	-	-	-	-	-	-	-	-
3	28%	29%	30%	28%	28%	27%	28%	27%	26%	26%

### Gender Gap

Level	LA					National				
	2003	2004	2005	2006	2007	2003	2004	2005	2006	2007
2+	-5%	-5%	-6%	-5%	-5%	-6%	-6%	-6%	-6%	-6%
2B+	-	-	-	-	-	-	-	-	-	-
3	-8%	-9%	-10%	-7%	-8%	-7%	-8%	-8%	-7%	-8%

## Science

### Boys

Level	LA					National				
	2003	2004	2005	2006	2007	2003	2004	2005	2006	2007
2+	92%	92%	91%	92%	92%	88%	88%	88%	88%	87%
2B+	-	-	-	-	-	-	-	-	-	-
3	30%	30%	30%	31%	31%	27%	27%	26%	25%	24%

### Girls

Level	LA					National				
	2003	2004	2005	2006	2007	2003	2004	2005	2006	2007
2+	93%	94%	94%	94%	94%	91%	91%	91%	91%	90%
2B+	-	-	-	-	-	-	-	-	-	-
3	26%	25%	28%	27%	28%	24%	25%	24%	23%	22%

### Gender Gap

Level	LA					National				
	2003	2004	2005	2006	2007	2003	2004	2005	2006	2007
2+	-1%	-2%	-2%	-2%	-1%	-3%	-3%	-3%	-3%	-3%
2B+	-	-	-	-	-	-	-	-	-	-
3	5%	5%	1%	4%	3%	3%	2%	2%	2%	2%

 Gender gap less than national gender gap

 Gender gap greater than national gender gap

#### Note:

Leicestershire/National attainment for 2005 - 2007 based on Teacher Assessments

Leicestershire/National attainment for 2004 based on Teacher Assessments for Trial Schools (223 schools) and Task/Test for Non-Trial schools (2 schools)

Leicestershire/National attainment for pre-2004 based on Task/Test data

All attainment figures for Key Stage One include data from all schools with eligible Year 2 pupils, including special schools and the PRU

National figures are based on the information published within the SFR 26/2007, National Curriculum Assessments at Key Stage 1 in England, 2007 (Provisional)

Gender gap is the difference between boys' attainment compared to girls' attainment

# Key Stage One Results 2003 - 2007 Ethnicity Analysis: Reading


855 Leicestershire


## Percentage achieving Level 2+

Ethnicity	LA					National				
	2003	2004	2005	2006	2007	2003	2004	2005	2006	2007
White British	87%	89%	88%	88%	87%	91%	86%	86%	86%	-
Irish	86%	83%	100%	100%	90%	84%	85%	86%	85%	-
Any other White background	85%	78%	90%	77%	75%	77%	77%	77%	74%	-
Total White	87%	88%	88%	87%	87%	85%	85%	86%	85%	-
White and Black Caribbean	87%	80%	93%	90%	87%	86%	84%	84%	82%	-
White and Black African	90%	80%	86%	100%	100%	83%	83%	82%	84%	-
White and Asian	93%	92%	95%	93%	93%	88%	89%	90%	88%	-
Any other Mixed background	74%	91%	95%	92%	93%	85%	86%	86%	85%	-
Total Mixed	86%	87%	94%	93%	92%	85%	85%	85%	85%	-
Indian	89%	93%	91%	95%	93%	88%	89%	88%	89%	-
Pakistani	68%	86%	88%	90%	88%	76%	77%	77%	77%	-
Bangladeshi	70%	78%	86%	82%	76%	75%	76%	78%	78%	-
Any other Asian background	95%	86%	83%	74%	80%	82%	83%	85%	84%	-
Total Asian	87%	91%	90%	91%	90%	80%	81%	81%	81%	-
Black Caribbean	83%	88%	100%	100%	100%	79%	81%	81%	80%	-
Black African	100%	88%	64%	82%	88%	77%	78%	78%	78%	-
Any other Black background	50%	100%	100%	75%	100%	79%	81%	80%	80%	-
Total Black	89%	89%	82%	85%	93%	78%	79%	79%	79%	-
Chinese	86%	92%	88%	95%	94%	90%	90%	90%	90%	-
Any other ethnic group	70%	74%	65%	83%	78%	74%	75%	76%	74%	-
Unclassified	84%	83%	80%	80%	83%	76%	77%	76%	71%	-
All pupils	86%	88%	88%	88%	87%	84%	85%	85%	84%	-


## Differences

Ethnicity	LA vs. National				
	2003	2004	2005	2006	2007
White British	-4%	3%	2%	2%	-
Irish	2%	-2%	14%	15%	-
Any other White background	8%	1%	13%	3%	-
Total White	2%	3%	2%	2%	-
White and Black Caribbean	1%	-4%	9%	8%	-
White and Black African	7%	-3%	4%	16%	-
White and Asian	5%	3%	5%	5%	-
Any other Mixed background	-11%	5%	9%	7%	-
Total Mixed	1%	2%	9%	8%	-
Indian	1%	4%	3%	6%	-
Pakistani	-8%	9%	11%	13%	-
Bangladeshi	-5%	2%	8%	4%	-
Any other Asian background	13%	3%	-2%	-10%	-
Total Asian	7%	10%	9%	10%	-
Black Caribbean	4%	6%	19%	20%	-
Black African	23%	10%	-14%	4%	-
Any other Black background	-29%	19%	20%	-5%	-
Total Black	11%	10%	3%	6%	-
Chinese	-4%	2%	-2%	5%	-
Any other ethnic group	-4%	-1%	-11%	9%	-
Unclassified	8%	6%	4%	9%	-
All pupils	2%	3%	3%	4%	-

 Performance greater than the national average for the ethnic group

 Performance less than the national average for the ethnic group

 Attainment greater than the comparator figure

 Attainment less than the comparator figure

### Note:

Leicestershire/National attainment for 2005 - 2007 based on Teacher Assessments

Leicestershire/National attainment for 2004 based on Teacher Assessments for Trial Schools (223 schools) and Task/Test for Non-Trial schools (2 schools)

Leicestershire/National attainment for pre-2004 based on Task/Test data

All attainment figures for Key Stage One include data from all schools with eligible Year 2 pupils, including special schools and the PRU

National figures are based on the information published within the SFR 30/2006, National Curriculum Assessments at Key Stage 1 in England, 2006 (Provisional)

# Key Stage One Results 2003 - 2007 Ethnicity Analysis: Writing


855 Leicestershire


## Percentage achieving Level 2+

Ethnicity	LA					National				
	2003	2004	2005	2006	2007	2003	2004	2005	2006	2007
White British	84%	87%	86%	85%	85%	91%	83%	84%	83%	-
Irish	86%	67%	100%	100%	80%	81%	83%	84%	82%	-
Any other White background	80%	77%	85%	74%	73%	74%	75%	74%	72%	-
Total White	84%	87%	86%	85%	85%	82%	83%	83%	82%	-
White and Black Caribbean	81%	82%	88%	88%	85%	83%	81%	82%	79%	-
White and Black African	90%	80%	86%	86%	100%	79%	79%	78%	81%	-
White and Asian	89%	88%	87%	89%	92%	85%	85%	87%	86%	-
Any other Mixed background	74%	91%	88%	94%	88%	82%	82%	83%	82%	-
Total Mixed	83%	87%	87%	90%	89%	82%	82%	82%	82%	-
Indian	87%	91%	89%	94%	91%	86%	86%	86%	86%	-
Pakistani	74%	86%	83%	90%	88%	73%	73%	73%	73%	-
Bangladeshi	76%	80%	81%	76%	68%	73%	74%	75%	75%	-
Any other Asian background	95%	86%	80%	74%	80%	80%	80%	82%	81%	-
Total Asian	86%	89%	87%	89%	88%	78%	78%	78%	78%	-
Black Caribbean	83%	88%	100%	100%	100%	74%	75%	76%	76%	-
Black African	90%	75%	64%	88%	88%	73%	74%	73%	74%	-
Any other Black background	50%	100%	100%	75%	100%	75%	76%	76%	75%	-
Total Black	83%	84%	82%	88%	93%	74%	74%	75%	75%	-
Chinese	86%	88%	82%	95%	94%	88%	88%	88%	87%	-
Any other ethnic group	70%	74%	65%	75%	78%	71%	71%	73%	71%	-
Unclassified	80%	81%	77%	67%	79%	73%	73%	73%	68%	-
All pupils	84%	87%	86%	85%	85%	81%	82%	82%	81%	-


## Differences

Ethnicity	LA vs. National				
	2003	2004	2005	2006	2007
White British	-7%	4%	2%	2%	-
Irish	5%	-16%	16%	18%	-
Any other White background	6%	2%	11%	2%	-
Total White	2%	4%	3%	3%	-
White and Black Caribbean	-2%	1%	6%	9%	-
White and Black African	11%	1%	8%	5%	-
White and Asian	4%	3%	0%	3%	-
Any other Mixed background	-8%	9%	5%	12%	-
Total Mixed	1%	5%	5%	8%	-
Indian	1%	5%	3%	8%	-
Pakistani	1%	13%	10%	17%	-
Bangladeshi	3%	6%	6%	1%	-
Any other Asian background	15%	6%	-2%	-7%	-
Total Asian	8%	11%	9%	11%	-
Black Caribbean	9%	13%	24%	24%	-
Black African	17%	1%	-9%	14%	-
Any other Black background	-25%	24%	24%	0%	-
Total Black	9%	10%	7%	13%	-
Chinese	-2%	-1%	-6%	8%	-
Any other ethnic group	-1%	3%	-8%	4%	-
Unclassified	7%	8%	4%	-1%	-
All pupils	3%	5%	4%	4%	-

 Performance greater than the national average for the ethnic group

 Performance less than the national average for the ethnic group

 Attainment greater than the comparator figure

 Attainment less than the comparator figure

### Note:

Leicestershire/National attainment for 2005 - 2007 based on Teacher Assessments

Leicestershire/National attainment for 2004 based on Teacher Assessments for Trial Schools (223 schools) and Task/Test for Non-Trial schools (2 schools)

Leicestershire/National attainment for pre-2004 based on Task/Test data

All attainment figures for Key Stage One include data from all schools with eligible Year 2 pupils, including special schools and the PRU

National figures are based on the information published within the SFR 30/2006, National Curriculum Assessments at Key Stage 1 in England, 2006 (Provisional)

# Key Stage One Results 2003 - 2007 Ethnicity Analysis: Mathematics


855 Leicestershire


## Percentage achieving Level 2+

Ethnicity	LA					National				
	2003	2004	2005	2006	2007	2003	2004	2005	2006	2007
White British	93%	93%	93%	93%	93%	91%	91%	92%	91%	-
Irish	93%	67%	100%	93%	90%	91%	91%	92%	91%	-
Any other White background	88%	88%	95%	88%	81%	86%	87%	87%	86%	-
Total White	92%	92%	93%	92%	92%	91%	91%	92%	91%	-
White and Black Caribbean	92%	87%	95%	87%	96%	90%	89%	89%	88%	-
White and Black African	100%	80%	100%	100%	100%	90%	88%	89%	90%	-
White and Asian	95%	90%	96%	99%	98%	93%	92%	94%	93%	-
Any other Mixed background	85%	95%	95%	92%	95%	91%	91%	91%	90%	-
Total Mixed	92%	90%	96%	94%	97%	91%	90%	91%	90%	-
Indian	95%	95%	94%	97%	96%	92%	92%	92%	92%	-
Pakistani	89%	95%	92%	95%	92%	83%	83%	84%	83%	-
Bangladeshi	73%	78%	95%	88%	76%	83%	83%	86%	84%	-
Any other Asian background	90%	94%	90%	88%	92%	89%	90%	91%	90%	-
Total Asian	92%	94%	94%	95%	93%	86%	86%	87%	86%	-
Black Caribbean	100%	88%	100%	100%	100%	84%	85%	86%	86%	-
Black African	80%	88%	64%	82%	94%	83%	83%	83%	84%	-
Any other Black background	50%	67%	100%	100%	100%	86%	85%	86%	85%	-
Total Black	83%	84%	82%	88%	97%	84%	84%	85%	84%	-
Chinese	86%	96%	97%	100%	94%	96%	95%	96%	96%	-
Any other ethnic group	75%	78%	90%	88%	81%	85%	85%	87%	84%	-
Unclassified	90%	88%	91%	75%	86%	85%	84%	84%	80%	-
All pupils	92%	92%	93%	92%	92%	90%	90%	91%	90%	-


## Differences

Ethnicity	LA vs. National				
	2003	2004	2005	2006	2007
White British	2%	2%	1%	2%	-
Irish	2%	-24%	8%	2%	-
Any other White background	2%	1%	8%	2%	-
Total White	1%	1%	1%	1%	-
White and Black Caribbean	2%	-2%	6%	-1%	-
White and Black African	10%	-8%	11%	10%	-
White and Asian	2%	-2%	2%	6%	-
Any other Mixed background	-6%	4%	4%	2%	-
Total Mixed	1%	0%	5%	4%	-
Indian	3%	3%	2%	5%	-
Pakistani	6%	12%	8%	12%	-
Bangladeshi	-10%	-5%	9%	4%	-
Any other Asian background	1%	4%	-1%	-2%	-
Total Asian	6%	8%	7%	9%	-
Black Caribbean	16%	3%	14%	14%	-
Black African	-3%	5%	-19%	-2%	-
Any other Black background	-36%	-18%	14%	15%	-
Total Black	-1%	0%	-3%	4%	-
Chinese	-10%	1%	1%	4%	-
Any other ethnic group	-10%	-7%	3%	4%	-
Unclassified	5%	4%	7%	-5%	-
All pupils	2%	2%	2%	2%	-

 Performance greater than the national average for the ethnic group

 Performance less than the national average for the ethnic group

 Attainment greater than the comparator figure

 Attainment less than the comparator figure

### Note:

Leicestershire/National attainment for 2005 - 2007 based on Teacher Assessments

Leicestershire/National attainment for 2004 based on Teacher Assessments for Trial Schools (223 schools) and Task/Test for Non-Trial schools (2 schools)

Leicestershire/National attainment for pre-2004 based on Task/Test data

All attainment figures for Key Stage One include data from all schools with eligible Year 2 pupils, including special schools and the PRU

National figures are based on the information published within the SFR 30/2006, National Curriculum Assessments at Key Stage 1 in England, 2006 (Provisional)