

**Key Stage
One
Officer Pack
2006**

KEY STAGE ONE GRAPH PACK

Background

This report provides an overview of local authority and national Key Stage One attainment data. The purpose of the report is to provide basic attainment comparisons between the local and national situation and to include further analysis of attainment by gender and ethnicity.

The Key Stage One Graph Pack includes the following contents:

- Breakdown of 2006 KS1 attainment
- Headline contextual data for the 2006 cohort
- Speaking and Listening Attainment 2+ and 3+ 2002 to 2006
- Reading 2+, 2B+ and 3+ 2002 to 2006
- Writing 2+, 2B+ and 3+ 2002 to 2006
- Mathematics 2+, 2B+ and 3+ 2002 to 2006
- Science 2+ and 3+ 2002 to 2006
- KS1 Average Point Scores by Gender 2002 to 2006
- Gender Analysis 2+, 2B+ and 3+ 2002 to 2006
- Ethnicity Analysis 2+ 2002 to 2006

Technical details

1. Key Stage One attainment data is collected from schools by the LA and passed to the DfES. All the School level and Local Authority data is derived from this data set. To allow analysis based on ethnicity the most recently available School Census data has been matched into the data set. The data for 2006 at this stage of the academic year is classified as provisional.
2. The source of the National data for 2006 is the DfES Statistical First Release SFR 30/2006 National Curriculum Assessments at Key Stage One in England, 2006 (Provisional). All historic national data has been obtained from a variety of DfES attainment sources.
3. Included in the Graph Pack for the first time are sections on gender and ethnicity analysis. For gender analysis purposes we have highlighted where the gender gap is larger than the national average and for ethnic analysis purposes we have highlighted where headline performance is greater than or less than average national or local performance. No degree of significance is placed on the differences highlighted.
4. Also included in the analysis are FFT (Fischer Family Trust) Key Stage One Contextual Estimates for 2003 to 2005. These newly derived estimates by FFT use purely the contextual characteristics of a cohort to define estimated outcomes. Using historic data FFT have examined the outcomes at Key Stage One by pupil characteristics nationally to enable them to develop school level estimates for Key Stage One.

Enquiries

Please contact the following people listed below if you wish to make any comments regarding this report or if you have any queries regarding the analysis.

As this analysis is very much developmental we would welcome any comments so that the product can improve and evolve.

Report contacts:

<p>Richard Gretton Statistic Manager Statistics and Information, MIS Unit Children & Young People's Service Leicestershire County Council</p> <p>Tel No: 0116 265 6638 E-Mail: rgretton@leics.gov.uk</p>	<p>Lea Parsons Senior Analyst Statistics and Information, MIS Unit Children & Young People's Service Leicestershire County Council</p> <p>Tel No: 0116 265 6481 E-Mail: lparsons@leics.gov.uk</p>
<p>Pam Hatfield Lead Consultant - Assessment & AFL Advice and Inspection Children & Young People's Service Leicestershire County Council</p> <p>Tel No: 0116 265 6329 E-Mail: phatfield@leics.gov.uk</p>	<p>Lynda Smith School Development Adviser School Improvement & Performance Service Children & Young People's Service Leicestershire County Council</p> <p>Tel No: 0116 265 6420 E-Mail: lysmith@leics.gov.uk</p>

Headline commentary:

Attainment levels both for Leicestershire and England have slightly declined from 2005 within the core subjects of Reading, Writing and Mathematics. The decline is reflected at 2+, 2B+ and 3+.

Leicestershire's comparable performance against all local authorities shows maintenance of ranking at 2+ and an improvement at 3+. The 3+ headline attainment for Leicestershire is still disproportionate to the high level of 2+ attainment where the LA is in the top 15% of performance, at 3+ performance has moved from the top third of LAs to the top quartile.

Leicestershire's Key Stage One Performance against all LAs and Statistical Neighbour LAs

		Reading	Writing	Maths	Reading	Writing	Maths	LEAs	
National	2006	14	20	25	36	28	32	150	Teacher Assessments (All Schools)
Stat. N'bours	2006	2	2	2	6	4	5	11	
National	2005	19	18	18	42	46	38	150	Teacher Assessments (All Schools)
Stat. N'bours	2005	2	2	2	6	6	7	11	
National	2004	18	6	23	54	37	63	150	Combined Teacher Assessments (Trial schools) and Task/Test results (Non-trial)
Stat. N'bours	2004	4	2	2	8	7	7	11	
National	2003	34	29	23	24	43	35	150	Task/Test (All schools)
Stat. N'bours	2003	6	4	3	5	7	5	11	
National	2002	51	31	17	48	65	34	150	Task/Test (All schools)
Stat. N'bours	2002	8	6	2	6	9	6	11	
National	2001	34	46	33	44	77	46	150	Task/Test (All schools)
Stat. N'bours	2001	6	6	3	7	10	6	11	

Boys' attainment has shown positive improvement in all subjects particularly at 2B+ and 3+, reversing the national trend for 2006. Girls' attainment has largely followed the national trend of decline but is more noticeable at 3+.

Ethnic attainment analysis using the 2005 data highlights performance across all ethnic groups is generally significantly higher than the national averages.

Subject commentary:

Speaking and Listening

Attainment continues to plateau with there being little movement over the last three years at either 2+ or 3+.

Leicestershire continues to be above the national average for the subject with the differential at 3+ increasing.

Both boys' and girls' attainment is above the national average and the differential is comparable.

Reading

The maintenance of the strong 2+ baseline continues, which has been the case over the last 3 years with 88% of pupils reaching this level. This places Leicestershire 14th against all Local Authorities and 2nd against the 11 Statistical Neighbours.

Nationally and locally reading attainment slightly declined from last year between 2+ and 3+, but in comparison with other Local Authorities, Leicestershire's position has improved.

Leicestershire continues to have a larger than the National average gender gap in reading at 2B+ and 3+ due to the high historic levels of girls' attainment.

Writing

National and local performance has slightly declined from last year over all of the writing indicators, the national decline is more pronounced especially at 2B+ and 3+. Comparative performance with other local

authorities illustrates that performance against last year has improved especially at 3+ with Leicestershire being ranked 28th as opposed to 46th. This is the highest placing in the last 6 years.

This year has seen a slight narrowing of the gender gap in line with national trends, especially at 2B+ and 3+ which have been historically prominent. This has been partly due to the declining performance of girls at the higher attainment levels.

Mathematics

As with reading and writing the local and national levels of attainment from 2+ through to 3+ have declined. The national decrease has been larger than Leicestershire's. The Local Authorities placement against all other local authorities has been maintained despite this trend.

The level of 3+ maths attainment continues to decline with the figure currently standing at 24% compared to 33% in 2002. Nationally a 10% drop from 31% in 2002 has occurred.

Leicestershire boys' performance has been maintained throughout the subject compared to the national trend which indicates a decline at all levels. This has resulted in the gender gap widening between girls and boys locally. Girls' attainment followed the national pattern of slight decline at 2+ and 2B+ but showed a significant decline of 3% at 3+ where we are now almost inline with the national average.

Science

Attainment levels in science continue to be very stable with 93% of pupils attaining 2+, the 3+ indicator continues to show high levels of performance with the general trend increasing compared to a national trend of slight decline.

Boys' attainment has increased which is against the national trend whilst girls' attainment has followed the national pattern of a slight fall. The gender gap in performance at 2+ has narrowed to below the national average whilst boys' attainment at 3+ has widened to 3% reflecting Leicestershire's historic high levels of boys' attainment.

Key Stage One Results 2006: Percentage of seven year olds in school

855 Leicestershire

Achievement Data

Boys	A	D	W	1	2	3	4+	2c	2b	2a	Level 2 & above	Level 2b & above	Level 3 & above	Average Points
Speaking & Listening	0	0	2	10	68	20	0	-	-	-	88.2	-	20.3	15.4
Reading	0	0	3	13	60	24	0	14	23	23	83.8	69.4	23.5	15.5
Writing	0	0	5	15	69	11	0	23	28	18	80.0	57.0	11.3	14.1
Overall Mathematics	0	0	2	6	64	27	0	16	23	26	91.6	75.6	27.2	16.2
Overall Science	0*	*	1	6	61	31	0	-	-	-	92.2	-	30.7	16.3

Girls	A	D	W	1	2	3	4+	2c	2b	2a	Level 2 & above	Level 2b & above	Level 3 & above	Average Points
Speaking & Listening	0	0	1	6	65	27	0	-	-	-	92.8	-	27.5	16.2
Reading	0	0	1	7	58	34	0	10	22	27	91.6	81.7	33.6	16.8
Writing	0	0	2	7	70	21	0	17	27	25	90.5	73.2	20.8	15.7
Overall Mathematics	0	0	1	5	73	20	0	16	26	31	93.3	76.9	20.3	16.0
Overall Science	0*	*	1	5	67	27	0	-	-	-	93.7	-	26.9	16.2

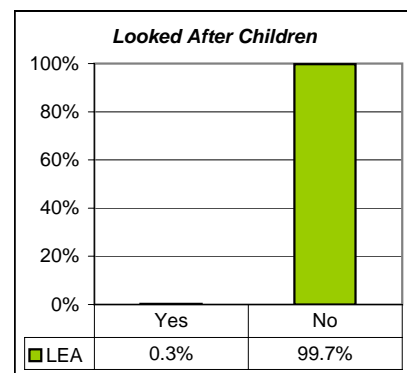
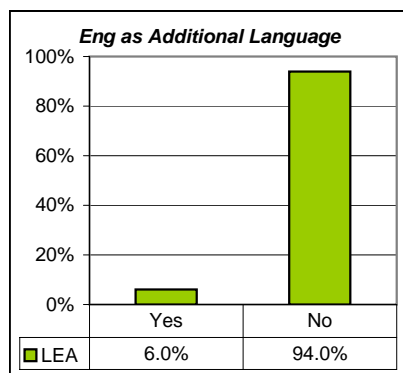
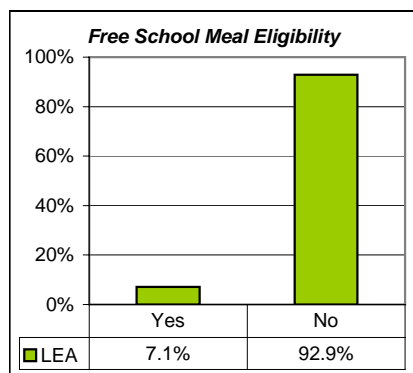
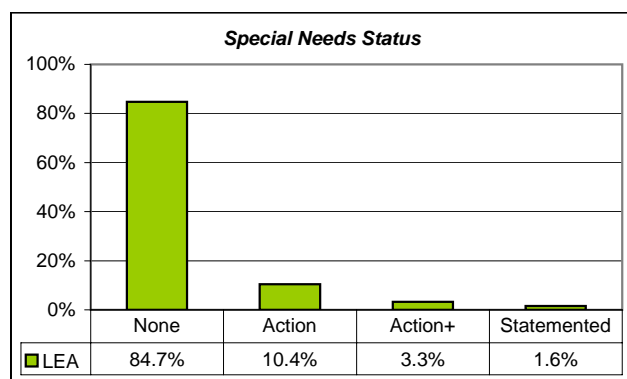
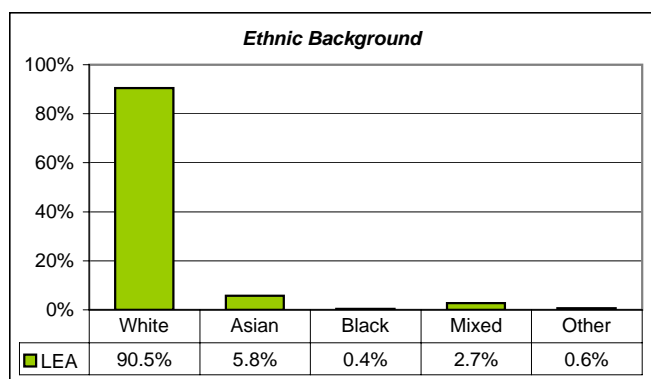
Boys & Girls	A	D	W	1	2	3	4+	2c	2b	2a	Level 2 & above	Level 2b & above	Level 3 & above	Average Points
Speaking & Listening	0	0	1	8	67	24	0	-	-	-	90.4	-	23.8	15.8
Reading	0	0	2	10	59	28	0	12	22	25	87.6	75.4	28.5	16.1
Writing	0	0	4	11	69	16	0	20	27	22	85.2	64.9	15.9	14.9
Overall Mathematics	0	0	2	6	69	24	0	16	24	28	92.4	76.2	23.8	16.1
Overall Science	0*	*	1	6	64	29	0	-	-	-	92.9	-	28.9	16.3

* Absent and Disapplied combined for Science

Note:

Data relates to all Leicestershire schools, including special schools.

PLASC 2006 Contextual Data [Matched Pupils: 99.9%]



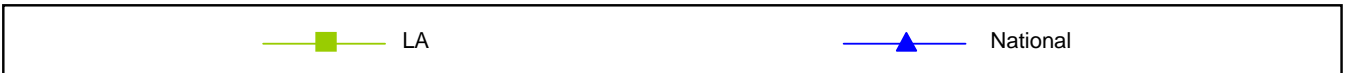
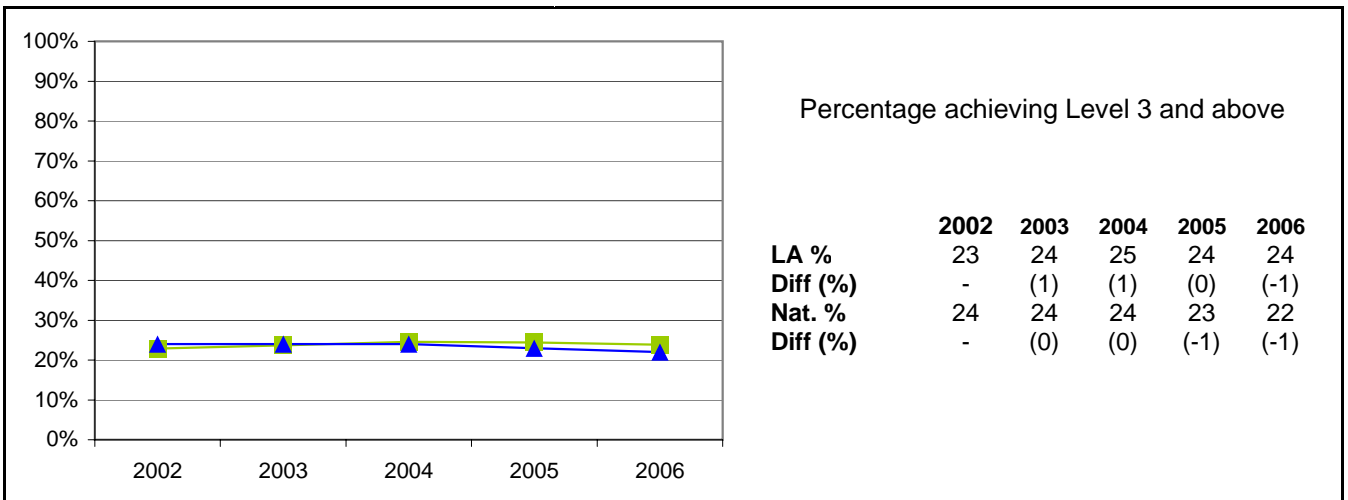
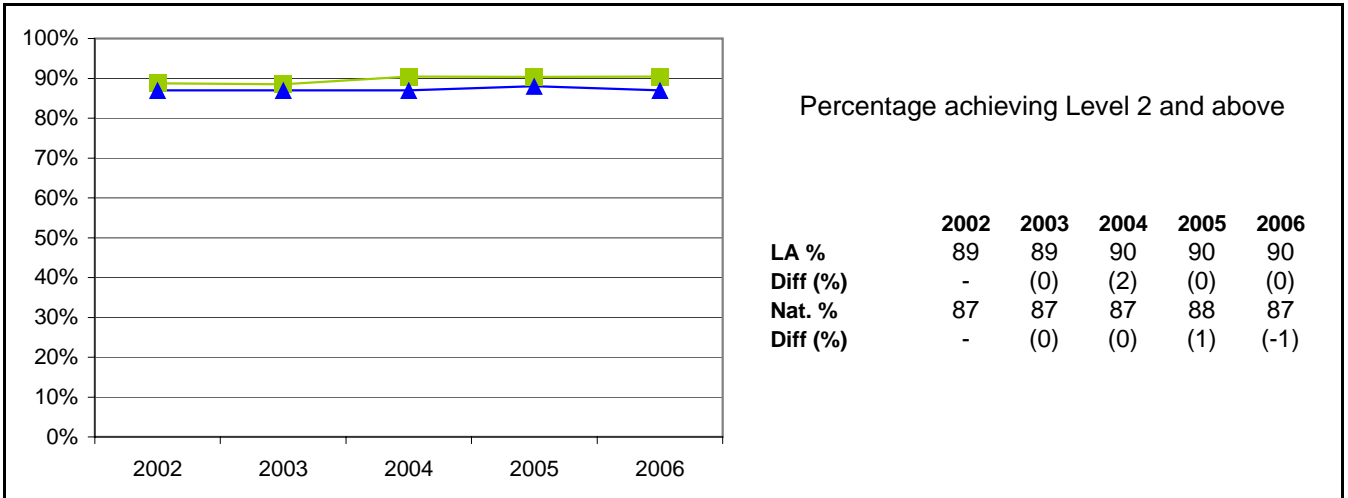
Note:

The contextual data relates to the Key Stage One Cohort only

Ethnic Background does not include Refused and Information Not Obtained Classified pupils

Key Stage One Results 2002 - 2006: Speaking and Listening

855 Leicestershire



Note:

Leicestershire/National attainment for 2005 and 2006 based on Teacher Assessments

Leicestershire/National attainment for 2004 based on Teacher Assessments for Trial Schools (223 schools) and Task/Test for Non-Trial schools (2 schools)

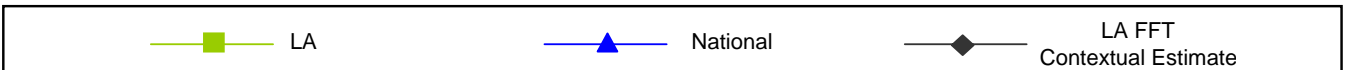
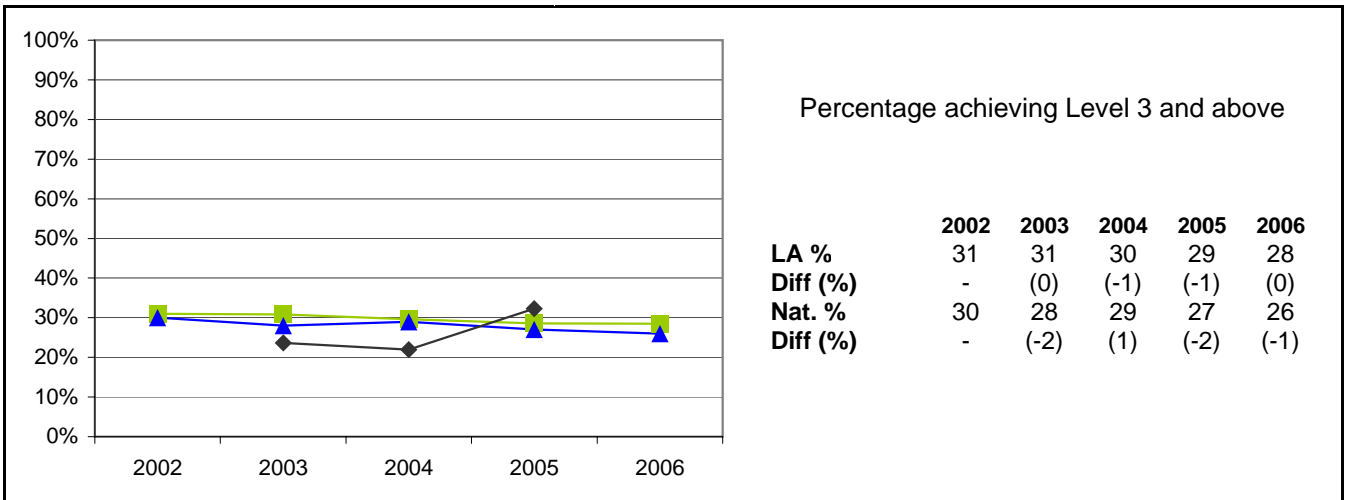
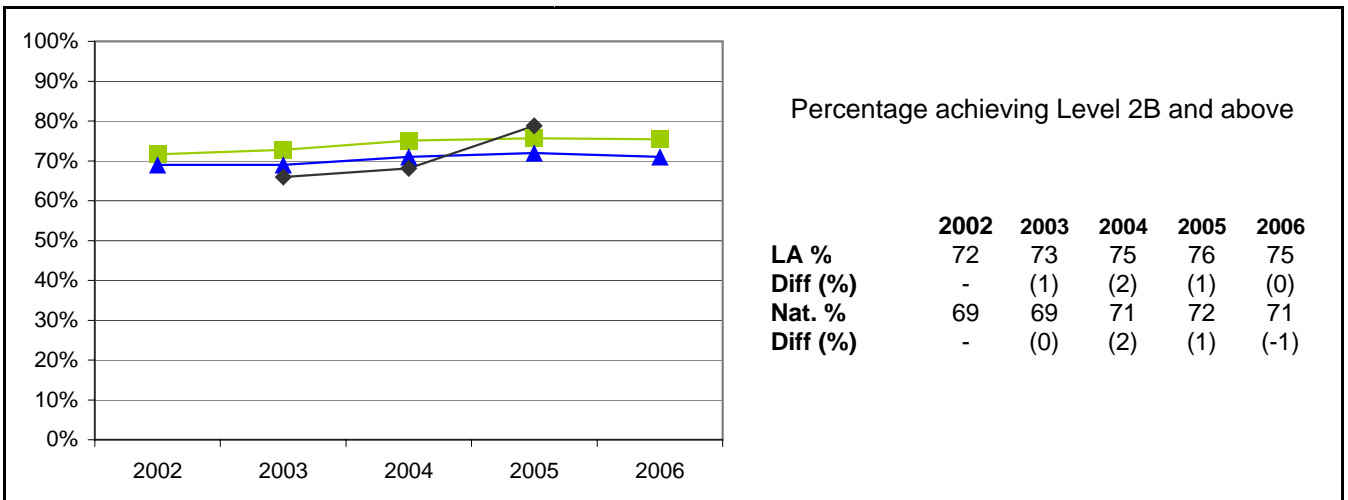
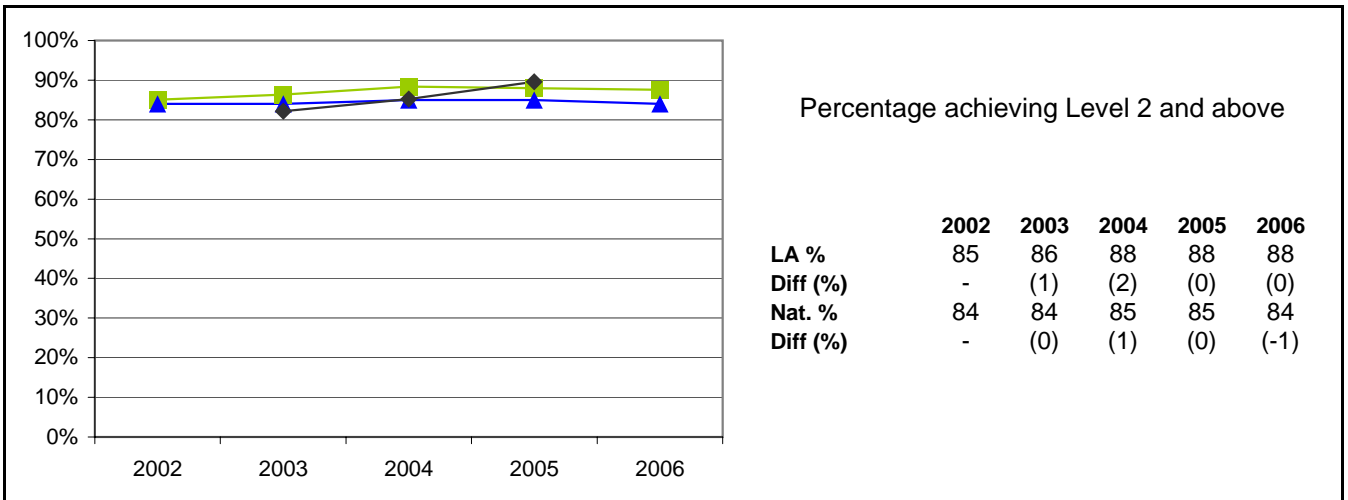
Leicestershire/National attainment for pre-2004 based on Task/Test data

All attainment figures for Key Stage One include data from all schools with eligible Year 2 pupils, including special schools and the PRU

National figures are based on the information published within the SFR 30/2006, National Curriculum Assessments at Key Stage 1 in England, 2006 (Provisional)

Key Stage One Results 2002 - 2006: Reading

855 Leicestershire



Note:

Leicestershire/National attainment for 2005 and 2006 based on Teacher Assessments

Leicestershire/National attainment for 2004 based on Teacher Assessments for Trial Schools (223 schools) and Task/Test for Non-Trial schools (2 schools)

Leicestershire/National attainment for pre-2004 based on Task/Test data

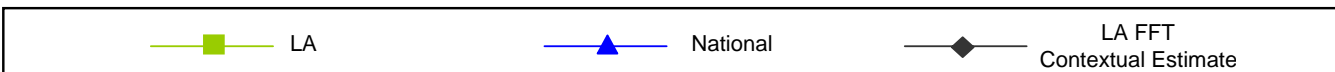
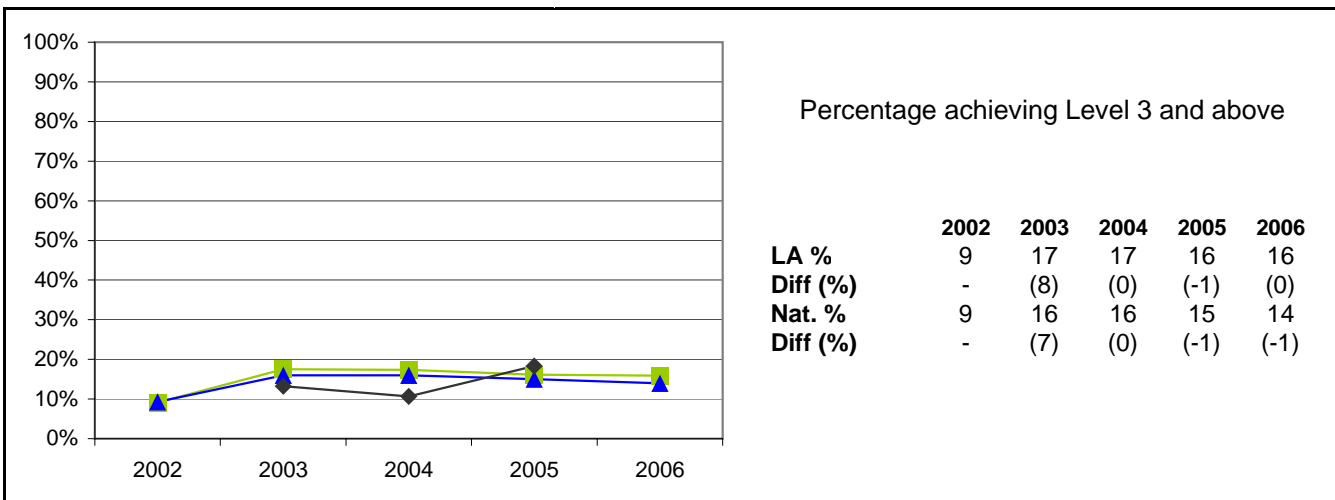
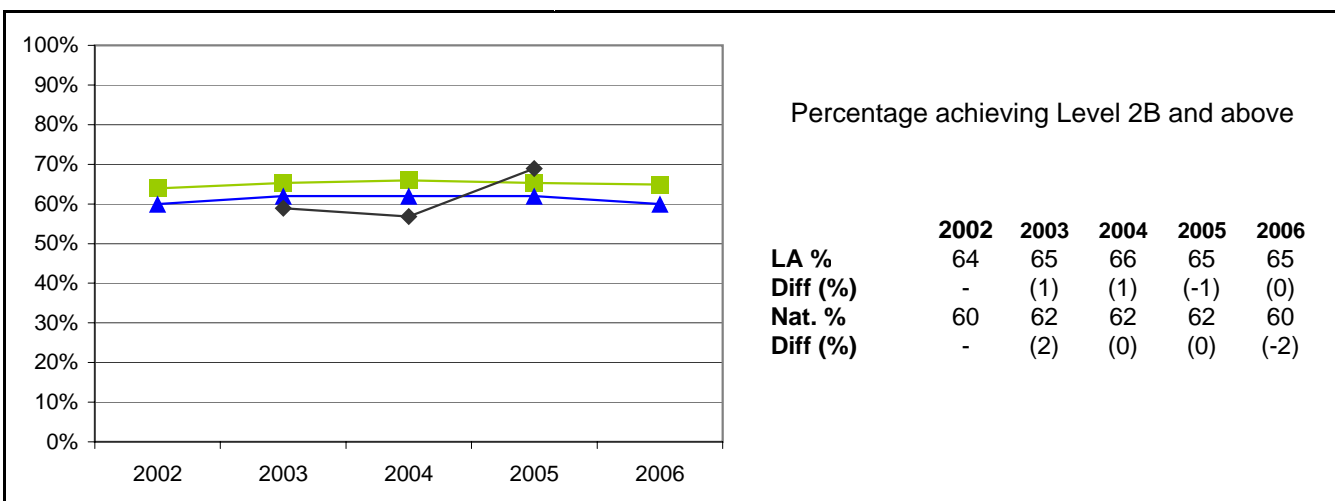
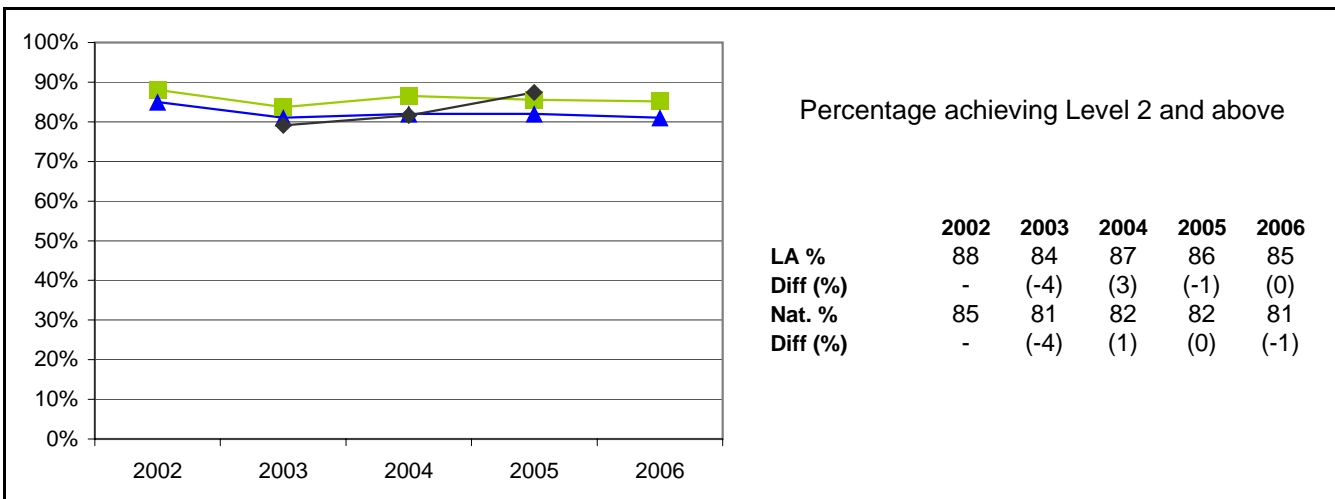
All attainment figures for Key Stage One include data from all schools with eligible Year 2 pupils, including special schools and the PRU

National figures are based on the information published within the SFR 30/2006, National Curriculum Assessments at Key Stage 1 in England, 2006 (Provisional)

For each year, where available on FFT (Fischer Family Trust), a Contextual Estimate has been included. This estimate does not utilise prior attainment but is based on outcomes of pupils using contextual characteristics as the sole basis.

Key Stage One Results 2002 - 2006: Writing

855 Leicestershire



Note:

Leicestershire/National attainment for 2005 and 2006 based on Teacher Assessments

Leicestershire/National attainment for 2004 based on Teacher Assessments for Trial Schools (223 schools) and Task/Test for Non-Trial schools (2 schools)

Leicestershire/National attainment for pre-2004 based on Task/Test data

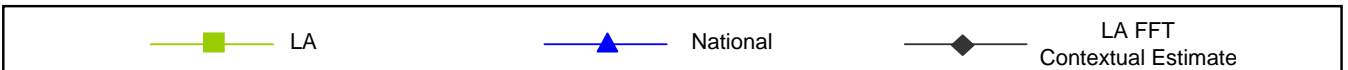
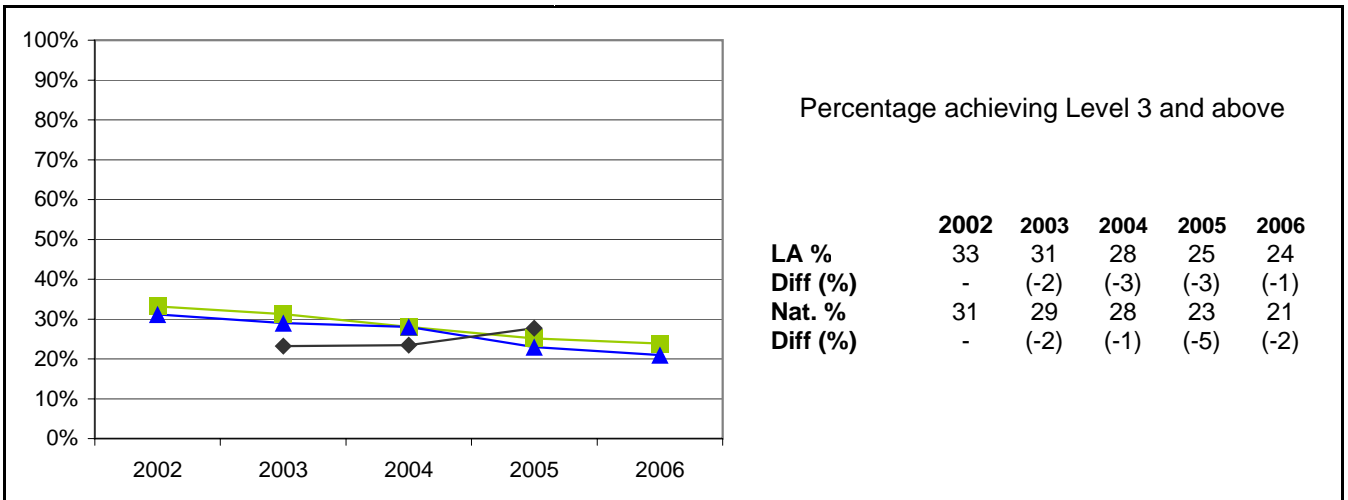
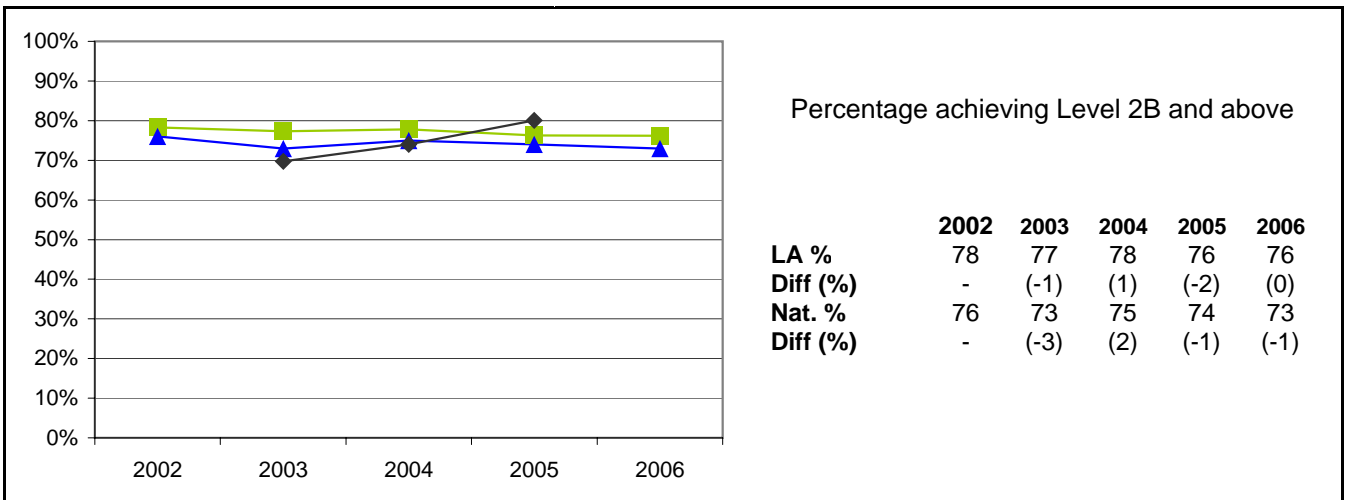
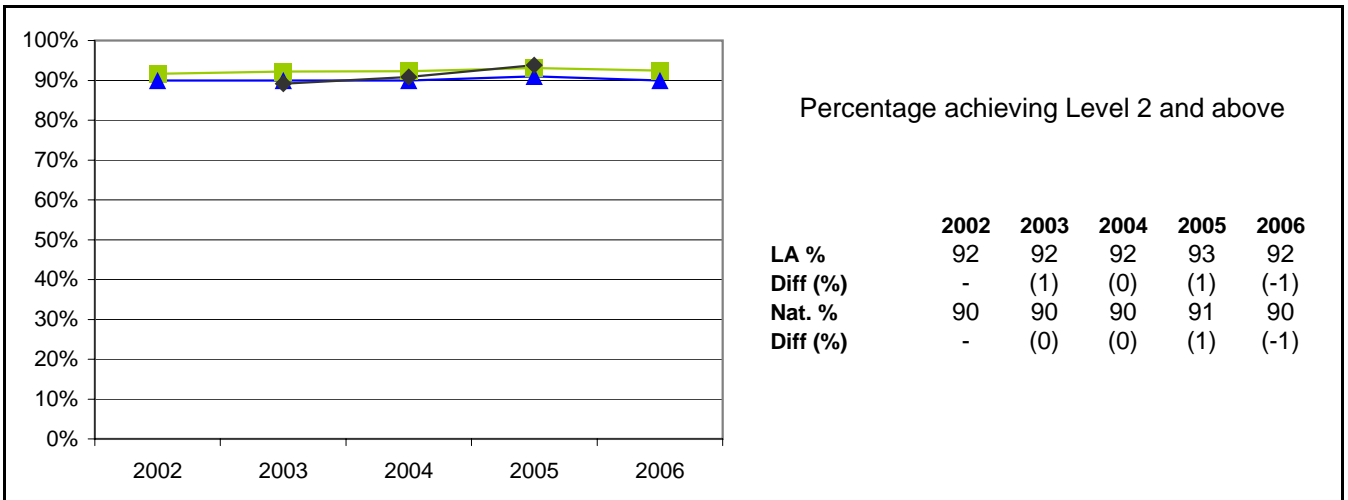
All attainment figures for Key Stage One include data from all schools with eligible Year 2 pupils, including special schools and the PRU

National figures are based on the information published within the SFR 30/2006, National Curriculum Assessments at Key Stage 1 in England, 2006 (Provisional)

For each year, where available on FFT (Fischer Family Trust), a Contextual Estimate has been included. This estimate does not utilise prior attainment but is based on outcomes of pupils using contextual characteristics as the sole basis.

Key Stage One Results 2002 - 2006: Mathematics

855 Leicestershire



Note:

Leicestershire/National attainment for 2005 and 2006 based on Teacher Assessments

Leicestershire/National attainment for 2004 based on Teacher Assessments for Trial Schools (223 schools) and Task/Test for Non-Trial schools (2 schools)

Leicestershire/National attainment for pre-2004 based on Task/Test data

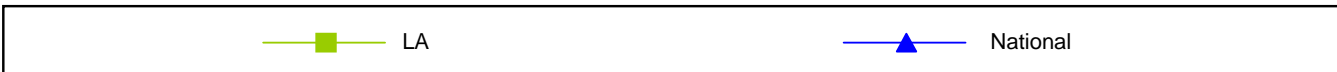
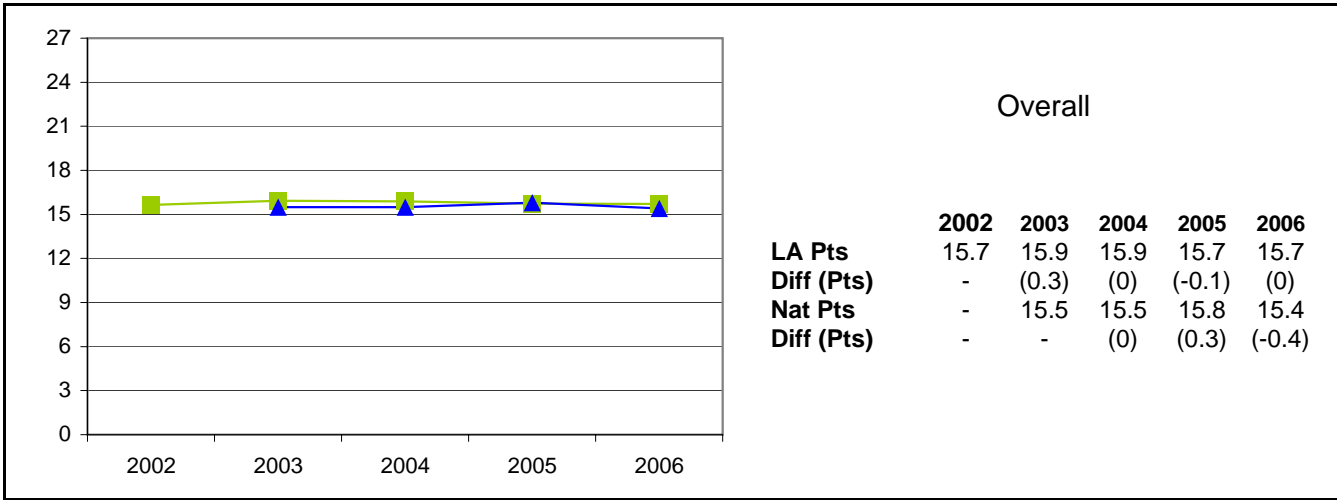
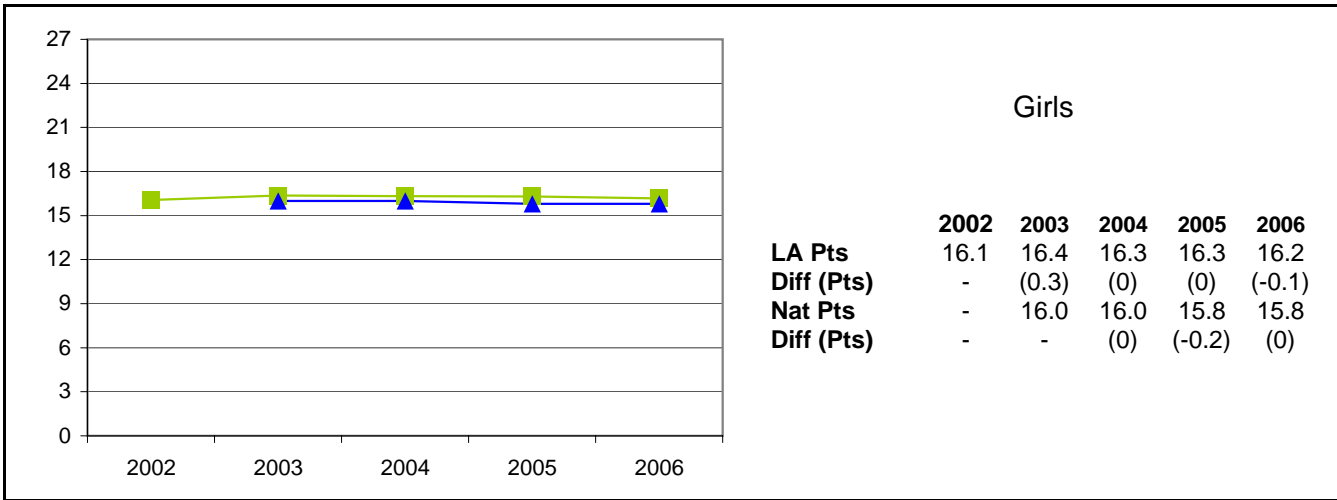
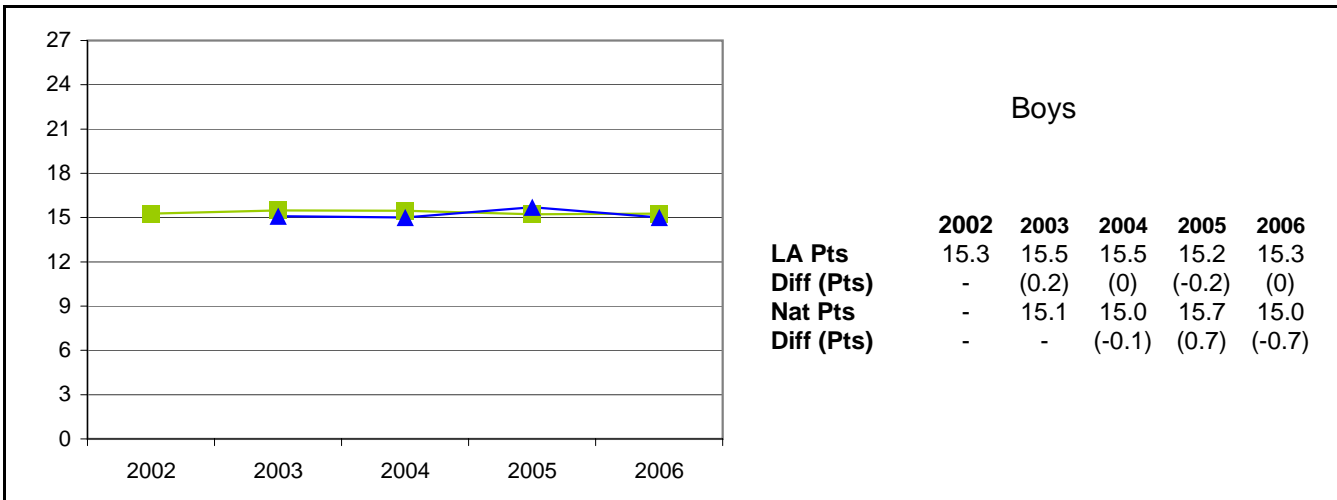
All attainment figures for Key Stage One include data from all schools with eligible Year 2 pupils, including special schools and the PRU

National figures are based on the information published within the SFR 30/2006, National Curriculum Assessments at Key Stage 1 in England, 2006 (Provisional)

For each year, where available on FFT (Fischer Family Trust), a Contextual Estimate has been included. This estimate does not utilise prior attainment but is based on outcomes of pupils using contextual characteristics as the sole basis.

Key Stage One Results 2002 - 2006: Average Point Score

855 Leicestershire



Note:

Leicestershire/National attainment for 2005 and 2006 based on Teacher Assessments
 Leicestershire/National attainment for 2004 based on Teacher Assessments for Trial Schools (223 schools) and Task/Test for Non-Trial schools (2 schools)
 Leicestershire/National attainment for pre-2004 based on Task/Test data
 All attainment figures for Key Stage One include data from all schools with eligible Year 2 pupils, including special schools and the PRU

Key Stage One Results 2002 - 2006 Gender Analysis: Reading and Writing

855 Leicestershire

Reading

Boys

Level	LA					National				
	2002	2003	2004	2005	2006	2002	2003	2004	2005	2006
2+	82%	83%	85%	84%	84%	80%	80%	81%	81%	80%
2B+	67%	68%	69%	70%	69%	-	64%	65%	67%	66%
3	27%	27%	25%	23%	24%	26%	24%	24%	22%	21%

Girls

Level	LA					National				
	2002	2003	2004	2005	2006	2002	2003	2004	2005	2006
2+	89%	90%	92%	92%	92%	88%	88%	88%	89%	89%
2B+	76%	78%	81%	82%	82%	-	75%	76%	78%	77%
3	35%	35%	35%	35%	34%	34%	33%	33%	32%	30%

Gender Gap

Level	LA					National				
	2002	2003	2004	2005	2006	2002	2003	2004	2005	2006
2+	-7%	-7%	-8%	-8%	-8%	-8%	-8%	-7%	-8%	-9%
2B+	-9%	-10%	-12%	-11%	-12%	-	-11%	-11%	-11%	-11%
3	-8%	-9%	-10%	-12%	-10%	-8%	-9%	-9%	-10%	-9%

Writing

Boys

Level	LA					National				
	2002	2003	2004	2005	2006	2002	2003	2004	2005	2006
2+	85%	79%	82%	81%	80%	82%	76%	77%	77%	76%
2B+	57%	58%	58%	57%	57%	-	54%	54%	54%	52%
3	6%	12%	12%	10%	11%	7%	11%	11%	10%	9%

Girls

Level	LA					National				
	2002	2003	2004	2005	2006	2002	2003	2004	2005	2006
2+	92%	89%	91%	91%	91%	90%	87%	87%	88%	87%
2B+	72%	73%	74%	75%	73%	-	70%	70%	70%	69%
3	12%	23%	23%	23%	21%	12%	21%	21%	20%	19%

Gender Gap

Level	LA					National				
	2002	2003	2004	2005	2006	2002	2003	2004	2005	2006
2+	-7%	-10%	-9%	-10%	-10%	-8%	-11%	-10%	-11%	-11%
2B+	-15%	-15%	-16%	-18%	-16%	-	-16%	-16%	-16%	-17%
3	-6%	-11%	-12%	-13%	-10%	-5%	-10%	-10%	-10%	-10%

 Gender gap less than national gender gap

 Gender gap greater than national gender gap

Note:

Leicestershire/National attainment for 2005 and 2006 based on Teacher Assessments

Leicestershire/National attainment for 2004 based on Teacher Assessments for Trial Schools (223 schools) and Task/Test for Non-Trial schools (2 schools)

Leicestershire/National attainment for pre-2004 based on Task/Test data

All attainment figures for Key Stage One include data from all schools with eligible Year 2 pupils, including special schools and the PRU

National figures are based on the information published within the SFR 30/2006, National Curriculum Assessments at Key Stage 1 in England, 2006 (Provisional)

Gender gap is the difference between boys' attainment compared to girls' attainment

Key Stage One Results 2002 - 2006 Gender Analysis: Mathematics

855 Leicestershire

Mathematics

Boys


Level	LA					National				
	2002	2003	2004	2005	2006	2002	2003	2004	2005	2006
2+	91%	92%	91%	92%	92%	89%	89%	90%	90%	89%
2B+	78%	77%	77%	75%	76%	-	73%	75%	73%	72%
3	35%	34%	32%	27%	27%	33%	32%	31%	25%	24%


Girls

Level	LA					National				
	2002	2003	2004	2005	2006	2002	2003	2004	2005	2006
2+	93%	93%	93%	94%	93%	91%	91%	91%	92%	92%
2B+	79%	77%	78%	77%	77%	-	74%	76%	75%	74%
3	32%	29%	24%	23%	20%	29%	27%	25%	20%	19%

Gender Gap

Level	LA					National				
	2002	2003	2004	2005	2006	2002	2003	2004	2005	2006
2+	-2%	-1%	-2%	-2%	-2%	-2%	-2%	-1%	-2%	-3%
2B+	-1%	0%	-1%	-2%	-1%	-	-1%	-1%	-2%	-2%
3	3%	5%	7%	4%	7%	4%	5%	6%	5%	5%

 Gender gap less than national gender gap

 Gender gap greater than national gender gap

Note:

Leicestershire/National attainment for 2005 and 2006 based on Teacher Assessments

Leicestershire/National attainment for 2004 based on Teacher Assessments for Trial Schools (223 schools) and Task/Test for Non-Trial schools (2 schools)

Leicestershire/National attainment for pre-2004 based on Task/Test data

All attainment figures for Key Stage One include data from all schools with eligible Year 2 pupils, including special schools and the PRU

National figures are based on the information published within the SFR 30/2006, National Curriculum Assessments at Key Stage 1 in England, 2006 (Provisional)

Gender gap is the difference between boys' attainment compared to girls' attainment

Key Stage One Results 2002 - 2006 Gender Analysis: Speaking & Listening and Science

855 Leicestershire

Speaking & Listening

Boys

Level	LA					National				
	2002	2003	2004	2005	2006	2002	2003	2004	2005	2006
2+	86%	86%	88%	87%	88%	84%	84%	84%	85%	84%
2B+	-	-	-	-	-	-	-	-	-	-
3	20%	20%	20%	19%	20%	20%	20%	20%	19%	19%

Girls

Level	LA					National				
	2002	2003	2004	2005	2006	2002	2003	2004	2005	2006
2+	91%	91%	93%	94%	93%	91%	90%	90%	91%	90%
2B+	-	-	-	-	-	-	-	-	-	-
3	26%	28%	29%	30%	27%	28%	27%	28%	27%	26%

Gender Gap

Level	LA					National				
	2002	2003	2004	2005	2006	2002	2003	2004	2005	2006
2+	-5%	-5%	-5%	-6%	-5%	-7%	-6%	-6%	-6%	-6%
2B+	-	-	-	-	-	-	-	-	-	-
3	-6%	-8%	-9%	-10%	-7%	-8%	-7%	-8%	-8%	-7%

Science

Boys

Level	LA					National				
	2002	2003	2004	2005	2006	2002	2003	2004	2005	2006
2+	91%	92%	92%	91%	92%	88%	88%	88%	88%	88%
2B+	-	-	-	-	-	-	-	-	-	-
3	28%	30%	30%	30%	31%	27%	27%	27%	26%	25%

Girls

Level	LA					National				
	2002	2003	2004	2005	2006	2002	2003	2004	2005	2006
2+	93%	93%	94%	94%	94%	91%	91%	91%	91%	91%
2B+	-	-	-	-	-	-	-	-	-	-
3	24%	26%	25%	28%	27%	25%	24%	25%	24%	23%

Gender Gap

Level	LA					National				
	2002	2003	2004	2005	2006	2002	2003	2004	2005	2006
2+	-2%	-1%	-2%	-2%	-2%	-3%	-3%	-3%	-3%	-3%
2B+	-	-	-	-	-	-	-	-	-	-
3	4%	5%	5%	1%	4%	2%	3%	2%	2%	2%

 Gender gap less than national gender gap

 Gender gap greater than national gender gap

Note:

Leicestershire/National attainment for 2005 and 2006 based on Teacher Assessments

Leicestershire/National attainment for 2004 based on Teacher Assessments for Trial Schools (223 schools) and Task/Test for Non-Trial schools (2 schools)

Leicestershire/National attainment for pre-2004 based on Task/Test data

All attainment figures for Key Stage One include data from all schools with eligible Year 2 pupils, including special schools and the PRU

National figures are based on the information published within the SFR 30/2006, National Curriculum Assessments at Key Stage 1 in England, 2006 (Provisional)

Gender gap is the difference between boys' attainment compared to girls' attainment

Key Stage One Results 2002 - 2006 Ethnicity Analysis: Reading


855 Leicestershire


Percentage achieving Level 2+

Ethnicity	LA					National				
	2002	2003	2004	2005	2006	2002	2003	2004	2005	2006
White British	85%	87%	89%	88%	88%	-	91%	86%	86%	-
Irish	100%	86%	83%	100%	100%	-	84%	85%	86%	-
Any other White background	80%	85%	78%	90%	77%	-	77%	77%	77%	-
Total White	85%	87%	88%	88%	87%	-	85%	85%	86%	-
White and Black Caribbean	88%	87%	80%	93%	90%	-	86%	84%	84%	-
White and Black African	100%	90%	80%	86%	100%	-	83%	83%	82%	-
White and Asian	87%	93%	92%	95%	93%	-	88%	89%	90%	-
Any other Mixed background	89%	74%	91%	95%	92%	-	85%	86%	86%	-
Total Mixed	88%	86%	87%	94%	93%	-	85%	85%	85%	-
Indian	92%	89%	93%	91%	95%	-	88%	89%	88%	-
Pakistani	79%	68%	86%	88%	90%	-	76%	77%	77%	-
Bangladeshi	69%	70%	78%	86%	82%	-	75%	76%	78%	-
Any other Asian background	73%	95%	86%	83%	74%	-	82%	83%	85%	-
Total Asian	88%	87%	91%	90%	91%	-	80%	81%	81%	-
Black Caribbean	100%	83%	88%	100%	100%	-	79%	81%	81%	-
Black African	75%	100%	88%	64%	82%	-	77%	78%	78%	-
Any other Black background	100%	50%	100%	100%	75%	-	79%	81%	80%	-
Total Black	93%	89%	89%	82%	85%	-	78%	79%	79%	-
Chinese	74%	86%	92%	88%	95%	-	90%	90%	90%	-
Any other ethnic group	87%	70%	74%	65%	83%	-	74%	75%	76%	-
Unclassified	86%	84%	83%	80%	80%	-	76%	77%	76%	-
All pupils	85%	86%	88%	88%	88%	-	84%	85%	85%	-


Differences

Ethnicity	LA vs. National				
	2002	2003	2004	2005	2006
White British	-	-4%	3%	2%	-
Irish	-	2%	-2%	14%	-
Any other White background	-	8%	1%	13%	-
Total White	-	2%	3%	2%	-
White and Black Caribbean	-	1%	-4%	9%	-
White and Black African	-	7%	-3%	4%	-
White and Asian	-	5%	3%	5%	-
Any other Mixed background	-	-11%	5%	9%	-
Total Mixed	-	1%	2%	9%	-
Indian	-	1%	4%	3%	-
Pakistani	-	-8%	9%	11%	-
Bangladeshi	-	-5%	2%	8%	-
Any other Asian background	-	13%	3%	-2%	-
Total Asian	-	7%	10%	9%	-
Black Caribbean	-	4%	6%	19%	-
Black African	-	23%	10%	-14%	-
Any other Black background	-	-29%	19%	20%	-
Total Black	-	11%	10%	3%	-
Chinese	-	-4%	2%	-2%	-
Any other ethnic group	-	-4%	-1%	-11%	-
Unclassified	-	8%	6%	4%	-
All pupils	-	2%	3%	3%	-

 Performance greater than the national average for the ethnic group

 Performance less than the national average for the ethnic group

 Attainment greater than the comparator figure

 Attainment less than the comparator figure

Note:

Leicestershire/National attainment for 2005 and 2006 based on Teacher Assessments

Leicestershire/National attainment for 2004 based on Teacher Assessments for Trial Schools (223 schools) and Task/Test for Non-Trial schools (2 schools)

Leicestershire/National attainment for pre-2004 based on Task/Test data

All attainment figures for Key Stage One include data from all schools with eligible Year 2 pupils, including special schools and the PRU

National figures are based on the information published within the SFR 30/2006, National Curriculum Assessments at Key Stage 1 in England, 2006 (Provisional)

Key Stage One Results 2002 - 2006 Ethnicity Analysis: Writing


855 Leicestershire


Percentage achieving Level 2+

Ethnicity	LA					National				
	2002	2003	2004	2005	2006	2002	2003	2004	2005	2006
White British	88%	84%	87%	86%	85%	-	91%	83%	84%	-
Irish	100%	86%	67%	100%	100%	-	81%	83%	84%	-
Any other White background	82%	80%	77%	85%	74%	-	74%	75%	74%	-
Total White	88%	84%	87%	86%	85%	-	82%	83%	83%	-
White and Black Caribbean	88%	81%	82%	88%	88%	-	83%	81%	82%	-
White and Black African	100%	90%	80%	86%	86%	-	79%	79%	78%	-
White and Asian	87%	89%	88%	87%	89%	-	85%	85%	87%	-
Any other Mixed background	89%	74%	91%	88%	94%	-	82%	82%	83%	-
Total Mixed	88%	83%	87%	87%	90%	-	82%	82%	82%	-
Indian	95%	87%	91%	89%	94%	-	86%	86%	86%	-
Pakistani	71%	74%	86%	83%	90%	-	73%	73%	73%	-
Bangladeshi	83%	76%	80%	81%	76%	-	73%	74%	75%	-
Any other Asian background	73%	95%	86%	80%	74%	-	80%	80%	82%	-
Total Asian	92%	86%	89%	87%	89%	-	78%	78%	78%	-
Black Caribbean	100%	83%	88%	100%	100%	-	74%	75%	76%	-
Black African	75%	90%	75%	64%	88%	-	73%	74%	73%	-
Any other Black background	100%	50%	100%	100%	75%	-	75%	76%	76%	-
Total Black	93%	83%	84%	82%	88%	-	74%	74%	75%	-
Chinese	84%	86%	88%	82%	95%	-	88%	88%	88%	-
Any other ethnic group	80%	70%	74%	65%	75%	-	71%	71%	73%	-
Unclassified	89%	80%	81%	77%	67%	-	73%	73%	73%	-
All pupils	88%	84%	87%	86%	85%	-	81%	82%	82%	-


Differences

Ethnicity	LA vs. National				
	2002	2003	2004	2005	2006
White British	-	-7%	4%	2%	-
Irish	-	5%	-16%	16%	-
Any other White background	-	6%	2%	11%	-
Total White	-	2%	4%	3%	-
White and Black Caribbean	-	-2%	1%	6%	-
White and Black African	-	11%	1%	8%	-
White and Asian	-	4%	3%	0%	-
Any other Mixed background	-	-8%	9%	5%	-
Total Mixed	-	1%	5%	5%	-
Indian	-	1%	5%	3%	-
Pakistani	-	1%	13%	10%	-
Bangladeshi	-	3%	6%	6%	-
Any other Asian background	-	15%	6%	-2%	-
Total Asian	-	8%	11%	9%	-
Black Caribbean	-	9%	13%	24%	-
Black African	-	17%	1%	-9%	-
Any other Black background	-	-25%	24%	24%	-
Total Black	-	9%	10%	7%	-
Chinese	-	-2%	-1%	-6%	-
Any other ethnic group	-	-1%	3%	-8%	-
Unclassified	-	7%	8%	4%	-
All pupils	-	3%	5%	4%	-

 Performance greater than the national average for the ethnic group

 Performance less than the national average for the ethnic group

 Attainment greater than the comparator figure

 Attainment less than the comparator figure

Note:

Leicestershire/National attainment for 2005 and 2006 based on Teacher Assessments

Leicestershire/National attainment for 2004 based on Teacher Assessments for Trial Schools (223 schools) and Task/Test for Non-Trial schools (2 schools)

Leicestershire/National attainment for pre-2004 based on Task/Test data

All attainment figures for Key Stage One include data from all schools with eligible Year 2 pupils, including special schools and the PRU

National figures are based on the information published within the SFR 30/2006, National Curriculum Assessments at Key Stage 1 in England, 2006 (Provisional)

Key Stage One Results 2002 - 2006 Ethnicity Analysis: Mathematics


855 Leicestershire


Percentage achieving Level 2+

Ethnicity	LA					National				
	2002	2003	2004	2005	2006	2002	2003	2004	2005	2006
White British	91%	93%	93%	93%	93%	-	91%	91%	92%	-
Irish	93%	93%	67%	100%	93%	-	91%	91%	92%	-
Any other White background	88%	88%	88%	95%	88%	-	86%	87%	87%	-
Total White	91%	92%	92%	93%	92%	-	91%	91%	92%	-
White and Black Caribbean	92%	92%	87%	95%	87%	-	90%	89%	89%	-
White and Black African	100%	100%	80%	100%	100%	-	90%	88%	89%	-
White and Asian	93%	95%	90%	96%	99%	-	93%	92%	94%	-
Any other Mixed background	96%	85%	95%	95%	92%	-	91%	91%	91%	-
Total Mixed	94%	92%	90%	96%	94%	-	91%	90%	91%	-
Indian	96%	95%	95%	94%	97%	-	92%	92%	92%	-
Pakistani	100%	89%	95%	92%	95%	-	83%	83%	84%	-
Bangladeshi	77%	73%	78%	95%	88%	-	83%	83%	86%	-
Any other Asian background	77%	90%	94%	90%	88%	-	89%	90%	91%	-
Total Asian	93%	92%	94%	94%	95%	-	86%	86%	87%	-
Black Caribbean	100%	100%	88%	100%	100%	-	84%	85%	86%	-
Black African	75%	80%	88%	64%	82%	-	83%	83%	83%	-
Any other Black background	100%	50%	67%	100%	100%	-	86%	85%	86%	-
Total Black	93%	83%	84%	82%	88%	-	84%	84%	85%	-
Chinese	95%	86%	96%	97%	100%	-	96%	95%	96%	-
Any other ethnic group	87%	75%	78%	90%	88%	-	85%	85%	87%	-
Unclassified	92%	90%	88%	91%	75%	-	85%	84%	84%	-
All pupils	92%	92%	92%	93%	92%	-	90%	90%	91%	-


Differences

Ethnicity	LA vs. National				
	2002	2003	2004	2005	2006
White British	-	2%	2%	1%	-
Irish	-	2%	-24%	8%	-
Any other White background	-	2%	1%	8%	-
Total White	-	1%	1%	1%	-
White and Black Caribbean	-	2%	-2%	6%	-
White and Black African	-	10%	-8%	11%	-
White and Asian	-	2%	-2%	2%	-
Any other Mixed background	-	-6%	4%	4%	-
Total Mixed	-	1%	0%	5%	-
Indian	-	3%	3%	2%	-
Pakistani	-	6%	12%	8%	-
Bangladeshi	-	-10%	-5%	9%	-
Any other Asian background	-	1%	4%	-1%	-
Total Asian	-	6%	8%	7%	-
Black Caribbean	-	16%	3%	14%	-
Black African	-	-3%	5%	-19%	-
Any other Black background	-	-36%	-18%	14%	-
Total Black	-	-1%	0%	-3%	-
Chinese	-	-10%	1%	1%	-
Any other ethnic group	-	-10%	-7%	3%	-
Unclassified	-	5%	4%	7%	-
All pupils	-	2%	2%	2%	-

 Performance greater than the national average for the ethnic group

 Performance less than the national average for the ethnic group

 Attainment greater than the comparator figure

 Attainment less than the comparator figure

Note:

Leicestershire/National attainment for 2005 and 2006 based on Teacher Assessments

Leicestershire/National attainment for 2004 based on Teacher Assessments for Trial Schools (223 schools) and Task/Test for Non-Trial schools (2 schools)

Leicestershire/National attainment for pre-2004 based on Task/Test data

All attainment figures for Key Stage One include data from all schools with eligible Year 2 pupils, including special schools and the PRU

National figures are based on the information published within the SFR 30/2006, National Curriculum Assessments at Key Stage 1 in England, 2006 (Provisional)