

**Key Stage
One
Officer Pack
2008**

Performance Team,
Knowledge Management, CYPS
Jonathan Bailiss : 0116 305 6639
Richard Gretton: 0116 305 6638

KEY STAGE ONE GRAPH PACK

Background

This report provides an overview of school level, local authority and national Key Stage One attainment data. The purpose of the report is to provide basic attainment comparisons between the local and national situation and to include further analysis of attainment by gender and ethnicity.

The Key Stage One Graph Pack includes the following contents:

- Breakdown of 2008 Key Stage One attainment
- Headline contextual data for the 2008 Key Stage One cohort
- Speaking and Listening Attainment 2+ and 3+ 2004 to 2008
- Reading 2+, 2B+ and 3+ 2004 to 2008
- Writing 2+, 2B+ and 3+ 2004 to 2008
- Mathematics 2+, 2B+ and 3+ 2004 to 2008
- Science 2+ and 3+ 2004 to 2008
- Key Stage One Average Point Scores by Gender 2004 to 2008
- Key Stage One Pupil number counts by Ethnicity and Gender between 2004 and 2008
- Gender Analysis 2+, 2B+ and 3+ 2004 to 2008
- Ethnicity Analysis 2+ 2004 to 2008

Technical details

1. Key Stage One attainment data is collected from schools by the LA and passed to the DCSF. All the School level and Local Authority data is derived from this data set. To allow analysis based on ethnicity the most recently available Spring School Census data has been matched into the data set. The data for 2008 at this stage of the academic year is classified as provisional.
2. The source of the National data for 2008 is the DCFS Statistical First Release SFR 21/2008 National Curriculum Assessments at Key Stage 1 in England, 2008 (Provisional). All historic national data has been obtained from a variety of DCSF attainment sources.
3. Included in the Graph Pack are sections on gender and ethnicity analysis. For gender analysis purposes we have highlighted where the gender gap is larger than the national average and for ethnic analysis purposes we have highlighted where headline performance is greater than or less than average national or local performance. No degree of significance is placed on the differences highlighted.
4. Also included in the analysis are FFT (Fischer Family Trust) Key Stage One Contextual Estimates for 2004 to 2007. These newly derived estimates by FFT use purely the contextual characteristics of a cohort to define estimated outcomes. Using historic data FFT have examined the outcomes at Key Stage One by pupil characteristics nationally to enable them to develop school level estimates for Key Stage One.

Enquiries

Please contact the following people listed below if you wish to make any comments regarding this report or if you have any queries regarding the analysis.

As this analysis is very much developmental we would welcome any comments so that the product can improve and evolve.

Report contacts:

<p>Richard Gretton Statistic Manager Performance Team, Knowledge Management Children & Young People's Service Leicestershire County Council</p> <p>Tel No: 0116 305 6638 E-Mail: rgretton@leics.gov.uk</p>	<p>Jonathan Bailiss Senior Statistics and Data Officer Performance Team, Knowledge Management Children & Young People's Service Leicestershire County Council</p> <p>Tel No: 0116 305 6639 E-Mail: jbailiss@leics.gov.uk</p>
<p>Lynda Smith School Development Adviser School Improvement & Performance Service Children & Young People's Service Leicestershire County Council</p> <p>Tel No: 0116 305 7412 E-Mail: lysmith@leics.gov.uk</p>	

Headline commentary:

Leicestershire's performance at the 2+ measure in Reading, Writing and Mathematics remains very similar to 2007, a trend mirrored by the national data. 2B+ shows an improvement at both Reading and Writing for Leicestershire, increasing the difference between Leicestershire and national attainment, while Mathematics again remains the same as 2007 for Leicestershire and at national level. 3+ Writing shows a small decline at Leicestershire and national level but the corresponding decline in Reading and Mathematics at national level is not evident for Leicestershire.

The performance of Leicestershire against other Local Authorities (LAs) in England has again improved with the authority now in the top 15% for all measures except 3+ Reading. Leicestershire has historically performed better against other LAs at 2+ and 2B+ when compared to 3+ and that trend has been repeated again this year. When compared to the Children Services Statistical Neighbours Leicestershire has improved across five of the measures and remained stable across the remaining four with the LA predominantly in the top third of similar authorities.

Leicestershire and National Key Stage One Performance (2008 data is provisional)

	Year	2+			2B+			3+			
		Reading	Writing	Maths	Reading	Writing	Maths	Reading	Writing	Maths	
Leicestershire	2008	87	85	92	76	65	78	30	15	26	Teacher Assessments (All Schools) - Provisional
National	2008	84	80	90	71	58	74	25	12	21	
Leicestershire	2007	87	85	92	75	64	78	30	16	26	Teacher Assessments (All Schools)
National	2007	84	80	90	71	59	74	26	13	22	
Leicestershire	2006	88	85	92	75	65	76	28	16	24	Teacher Assessments (All Schools)
National	2006	84	81	90	71	60	73	26	14	21	
Leicestershire	2005	88	86	93	76	65	76	29	16	25	Teacher Assessments (All Schools)
National	2005	85	82	91	72	62	74	27	15	23	
Leicestershire	2004	88	87	92	75	66	78	29	17	28	Combined Teacher Assessments (Trial schools) and Task/Test results (Non-trial schools)
National	2004	85	82	90	71	62	75	29	16	28	
Leicestershire	2003	86	84	92	73	65	77	31	17	31	Task/Test (All schools)
National	2003	84	81	90	69	62	73	28	16	29	
Leicestershire	2002	85	88	92	72	64	78	31	9	33	Task/Test (All schools)
National	2002	84	86	90	69	60	76	30	9	31	

Leicestershire's Key Stage One Performance (Rankings) against all LAs and Statistical Neighbour LAs (2008 data is provisional) (1 = highest ranked, 150 = lowest ranked)

	Year	2+			2B+			3+			LAs	
		Reading	Writing	Maths	Reading	Writing	Maths	Reading	Writing	Maths		
National	2008	17	12	17	17	15	18	24	21	18	150	Teacher Assessments (All Schools) - Provisional
New CS Stat. N'bours	2008	3	2	2	3	3	3	4	3	2	11	
National	2007	21	14	27	24	21	21	26	17	26	150	Teacher Assessments (All Schools)
New CS Stat. N'bours	2007	3	2	5	4	3	4	5	3	4	11	
National	2006	14	20	25	21	19	33	36	28	32	150	Teacher Assessments (All Schools)
New CS Stat. N'bours	2006	2	2	2	3	3	6	8	4	6	11	
Stat. N'bours	2006	2	2	2	3	3	6	6	4	5	11	Teacher Assessments (All Schools)
National	2005	19	18	18	23	32	42	42	46	38	150	
New CS Stat. N'bours	2005	3	2	2	4	6	8	7	5	5	11	Teacher Assessments (All Schools)
Stat. N'bours	2005	2	2	2	4	5	8	6	6	7	11	
National	2004	18	6	23	19	16	30	54	37	63	150	Combined Teacher Assessments (Trial schools) and Task/Test results (Non-trial)
Stat. N'bours	2004	4	2	2	4	3	4	8	7	7	11	
National	2003	34	29	23	18	34	20	24	43	35	150	Task/Test (All schools)
Stat. N'bours	2003	6	4	3	4	5	2	5	7	5	11	
National	2002	51	31	17	28	23	32	48	65	34	150	Task/Test (All schools)
Stat. N'bours	2002	8	6	2	5	5	5	6	9	6	11	

Notes: New CS Stat. N'bours (New Children Services Statistical Neighbours) relates to the new set of Statistical Neighbours issued in March 2007 by the DCSF following the revision of the previous Ofsted model to enable Children's Services Performance comparisons. "Stat. N'bours" relates to the previous Ofsted Statistical Neighbours that formed the basis of benchmarking comparisons prior to 2006.

Within Leicestershire the performance by gender continues to be significantly above the national performance levels at all subjects. Girls continue to out-perform boys at all measures except for 3+ Mathematics and Science.

Across all subjects except for Reading and Writing the gender gap has widened at 2+ with boys falling further behind girls. At 2B+ the gender gap has remained stable at Reading and Writing but narrowed at Mathematics. At 3+ there is a marked decline in girls' performance while boys have shown a general improvement. This is highlighted by a 1% increase in boys achieving 3+ at Mathematics and a corresponding 1% decrease for girls at the same measure.

Ethnic attainment analysis using the 2007 national data highlights that performance across the majority of ethnic groups in Leicestershire continues to be significantly higher than the national averages. Some of the smaller ethnic groups were out-performed nationally with the Bangladeshi attainment noticeably lower. It is however worth noting that due to small cohort sizes these figures are prone to fluctuation with Bangladeshi pupils showing a large improvement in 2008 at LA level.

Subject commentary:

Speaking and Listening

At 2+ the performance has remained very stable at both Leicestershire and national level for the past five years, standing at 90% for the LA and 87% nationally.

At 3+ Leicestershire has remained stable at 24% for the past four years, after showing a slight decline from 25% in 2004, while nationally there has been a steady decline from 24% in 2004 to 21% in 2008. The gender gap continues to narrow at this measure with girls out-performing boys.

Leicestershire continues to be above the national average for Speaking and Listening across the 2+ and 3+ measures, and by gender.

Reading

At 2+ the performance has dropped slightly over the past five years at both Leicestershire and national level, from 88% to 87% at LA level and from 85% to 84% at national level.

At 2B+ there has been a slight increase at LA level for 2008 from 75% to 76%. This increase is not reflected at national level where performance has remained largely stable at 71% for the past five years.

At 3+ Leicestershire has shown some fluctuation over the past five years, dropping from 30% in 2004 to 28% in 2006 and then recovering back to 30% by 2008. Across the same period nationally the performance has shown a steady decline from 29% to 25%. The gender gap continues to narrow at this measure both nationally and locally with girls out-performing boys.

Leicestershire continues to be above the national average for Reading across the 2+, 2B+ and 3+ measures, and by gender.

Writing

Across all measures for Leicestershire and nationally there has been a decline across the past five years.

At 2+ there has been a 2% decline from 2004 to 2008 at LA and national level, from 87% to 85% and from 82% to 80% respectively.

At 2B+ Leicestershire dropped from 66% in 2004 to 64% in 2007 but showed some improvement in 2008 with 65% of pupils achieving the level. The same improvement was not shown at national level where the percentage again fell to 58% in 2008 compared to 62% in 2004.

At 3+ there has been a steady decline for both Leicestershire and nationally. At LA level this decline has seen the percentage achieving the level fall from 17% in 2004 to 15% in 2008; however this is against a backdrop of a 4% decline from 16% to 12% nationally across the same period. As with Speaking and Listening and Reading the gender gap at this measure is narrowing in Leicestershire with girls out-performing boys.

Leicestershire continues to be above the national average for Writing across the 2+, 2B+ and 3+ measures, and by gender. In terms of Leicestershire's rank against other authorities Writing has become the authorities main strength, particularly at the 2+ and 2B+ measures.

Mathematics

At 2+ and 2B+ for both Leicestershire and nationally there has been a degree of fluctuation but overall, across the five years, the percentages achieving each level has remained quite stable.

At 3+ Leicestershire has experienced a decline across the five years from 28% in 2004 to 26% in 2008. This decline however is set against a national decline of 7% from 28% in 2004 to 21% in 2008. The gender gap continues to widen at this measure with boys out-performing girls.

Leicestershire continues to be above the national average for Mathematics across the 2+, 2B+ and 3+ measures, and by gender. The smaller-than-national decline in pupils achieving level 3+ has seen Leicestershire's rank at this measure improve significantly to the extent that it is now the authority's strongest subject at 3+.

Science

At 2+ the performance has remained largely stable at both Leicestershire and national level for the past five years. The only deviation came this year with Leicestershire dropping from 93% to 92%, although this still compares favourably to the consistent 89% achieved nationally.

At 3+ Leicestershire has remained stable at 28/29% for the past five years, dropping slightly back to 28% in 2008 after three years of 29%. Nationally however there has been a steady decline of 1% a year from 26% in 2004 to 22% in 2008. The gender gap continues to widen at this measure with boys out-performing girls.

Leicestershire continues to be above the national average for Science across the 2+ and 3+ measures, and by gender.

Key Stage One Results 2008: Percentage of seven year olds in school

855 Leicestershire

Achievement Data

Boys	A	D	W	1	2	3	4+	2c	2b	2a	Level 2 & above	Level 2b & above	Level 3 & above	Average Points
Speaking & Listening	0	0	2	11	67	21	0	-	-	-	87.7	-	20.6	15.4
Reading	0	0	3	13	59	25	0	13	22	24	84.0	71.1	25.5	15.6
Writing	0	0	4	15	70	11	0	23	29	18	80.6	57.4	10.6	14.1
Overall Mathematics	0	0	2	8	61	30	0	12	22	26	90.3	77.9	29.5	16.4
Overall Science	0*	*	1	7	61	30	0	-	-	-	91.2	-	30.3	16.2
Overall														15.6

Girls	A	D	W	1	2	3	4+	2c	2b	2a	Level 2 & above	Level 2b & above	Level 3 & above	Average Points
Speaking & Listening	0	0	1	6	66	27	0	-	-	-	93.3	-	27.0	16.2
Reading	0	0	1	8	57	34	0	10	20	27	90.9	80.9	33.8	16.8
Writing	0	0	2	9	70	19	0	17	29	25	89.4	72.2	18.9	15.5
Overall Mathematics	0	0	1	6	71	22	0	14	27	30	93.1	79.1	21.7	16.1
Overall Science	0*	*	1	6	67	26	0	-	-	-	93.2	-	25.8	16.1
Overall														16.1

Boys & Girls	A	D	W	1	2	3	4+	2c	2b	2a	Level 2 & above	Level 2b & above	Level 3 & above	Average Points
Speaking & Listening	0	0	1	8	67	24	0	-	-	-	90.4	-	23.7	15.8
Reading	0	0	2	11	58	29	0	11	21	25	87.4	75.9	29.5	16.2
Writing	0	0	3	12	70	15	0	20	29	21	84.9	64.7	14.6	14.8
Overall Mathematics	0	0	1	7	66	26	0	13	25	28	91.7	78.5	25.7	16.3
Overall Science	0*	*	1	7	64	28	0	-	-	-	92.2	-	28.1	16.2
Overall														15.9

* Absent and Disapplied combined for Science

Note:

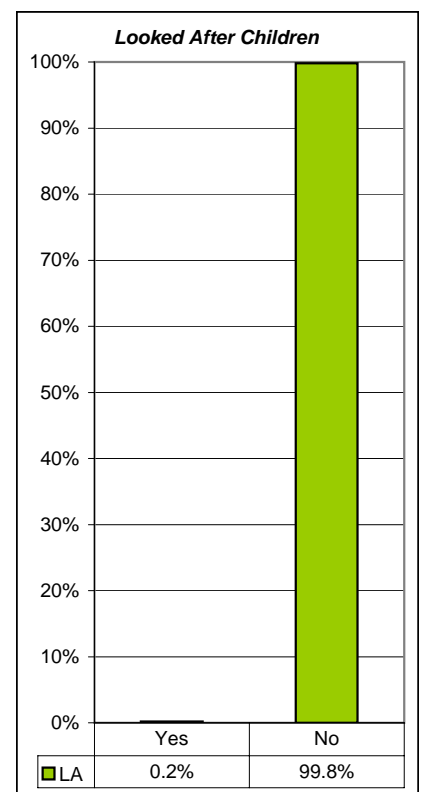
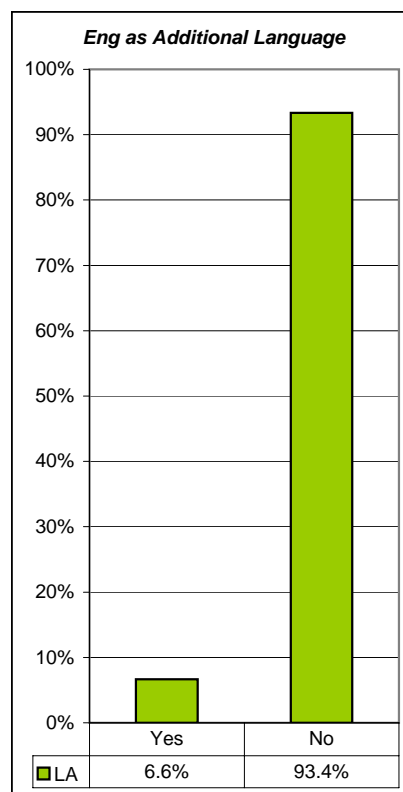
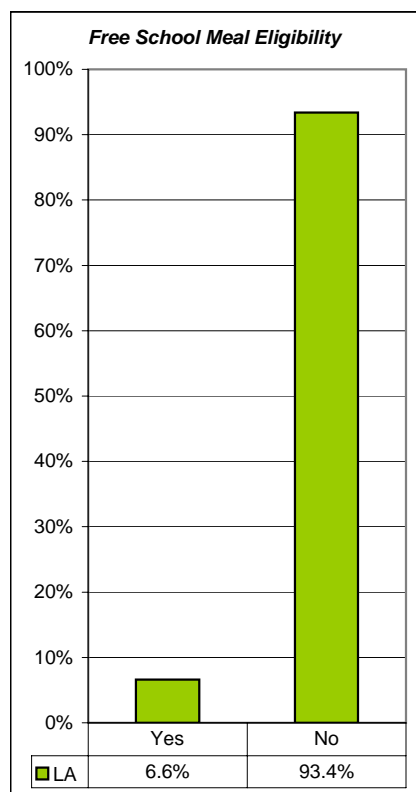
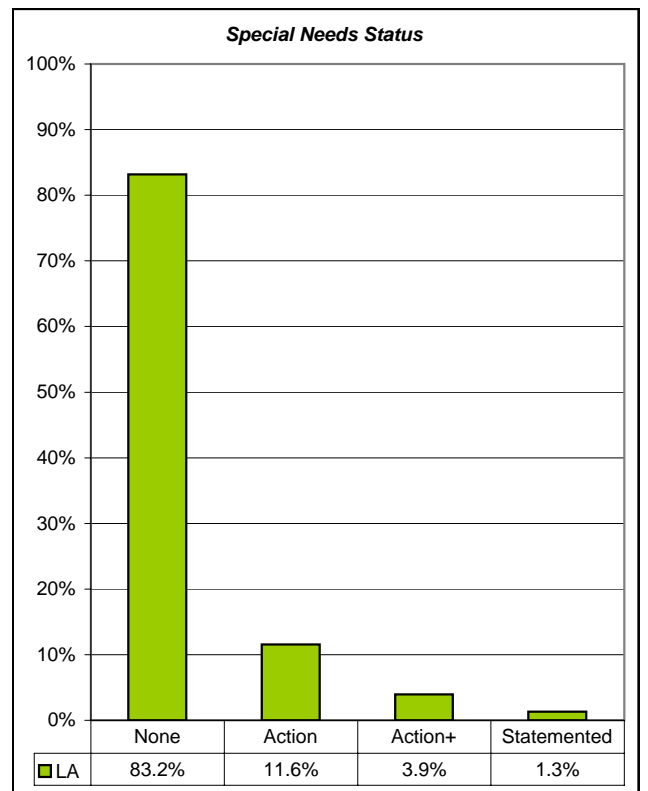
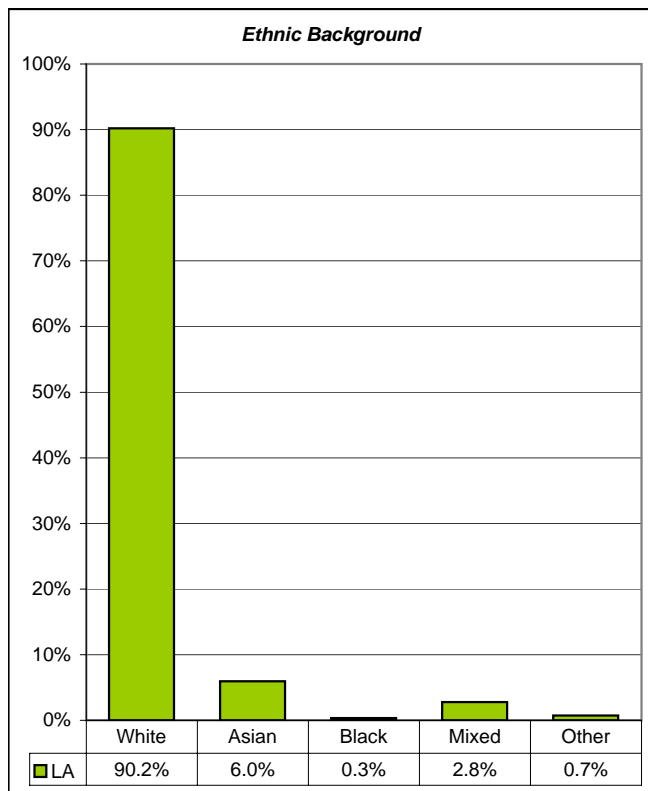
Data relates to all Leicestershire schools, including special schools.

APS for 2005 to 2008 uses the new DCSF approach to the calculation for headline attainment; using Reading, Writing, Mathematics and Science

APS for 2004 uses the historic and current Value Added approach to calculation; using Reading, Writing and Mathematics

Key Stage One Results 2008: School Census 2008 Contextual Data

855 Leicestershire [Matched Pupils: 100%]



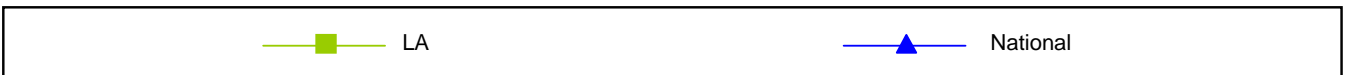
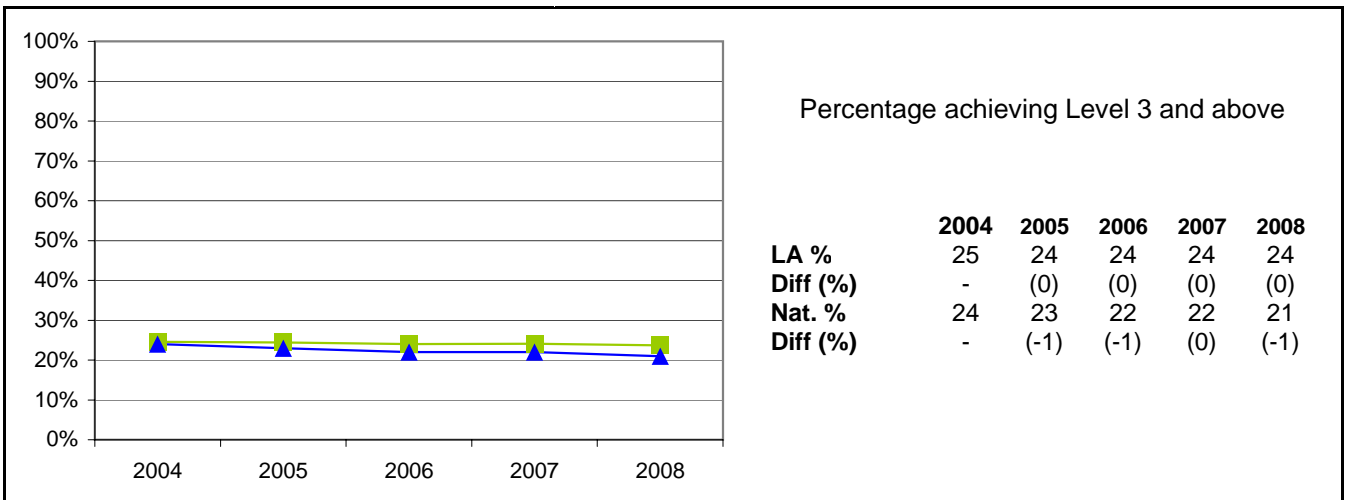
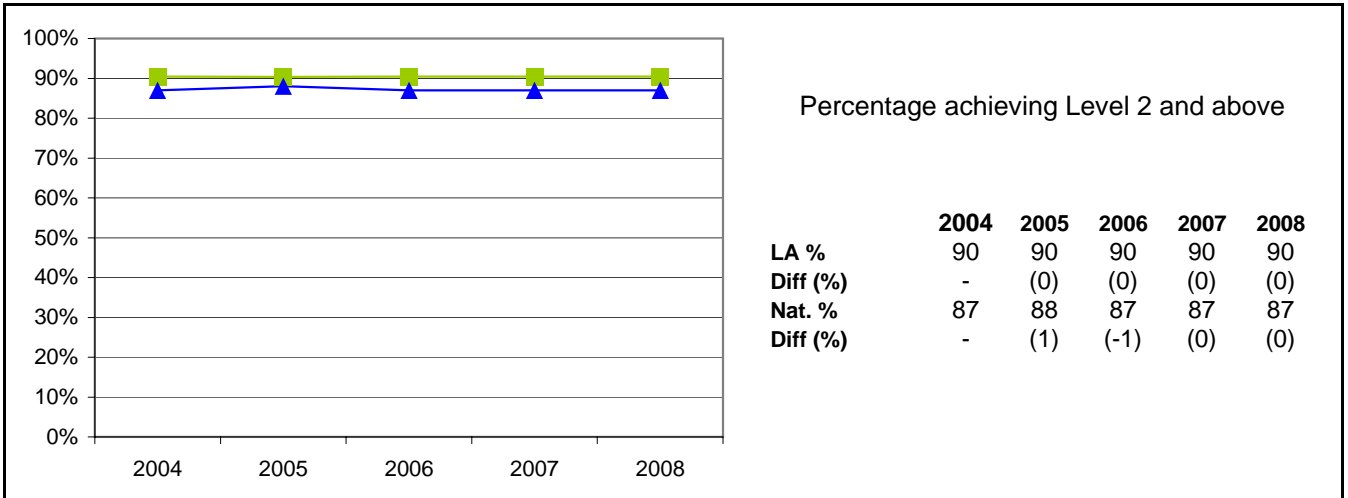
Note:

The contextual data relates to the Key Stage One Cohort only

Ethnic Background does not include Refused and Information Not Obtained Classified pupils

Key Stage One Results 2004 - 2008: Speaking and Listening

855 Leicestershire



Note:

Leicestershire/National attainment for 2005 - 2008 based on Teacher Assessments

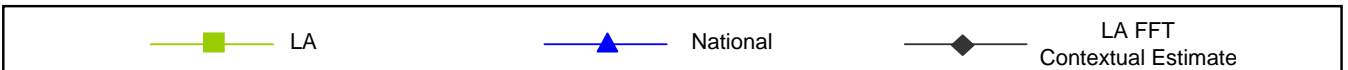
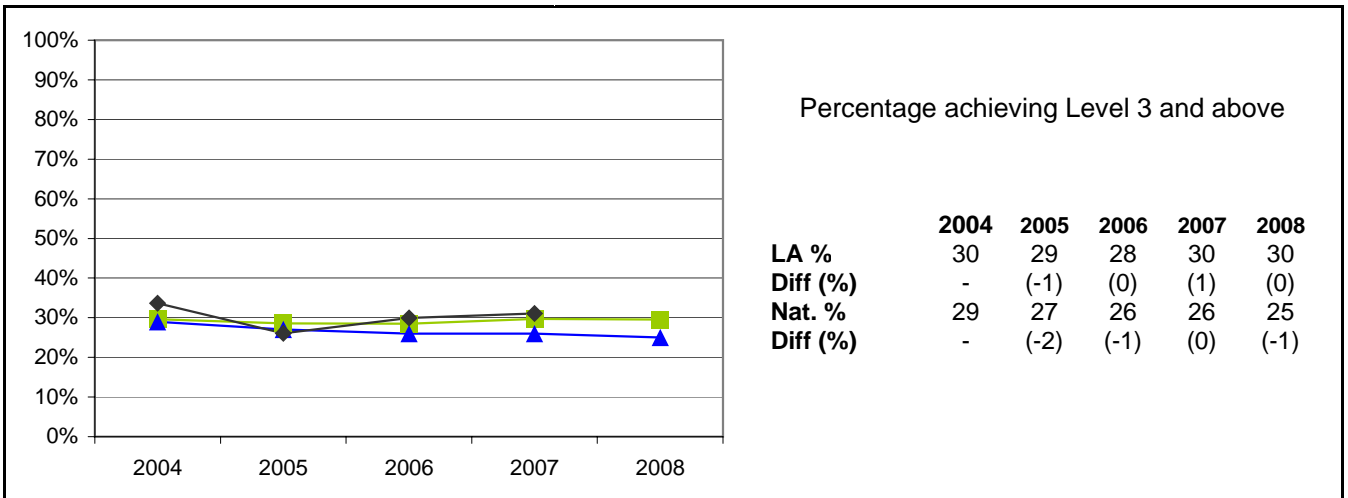
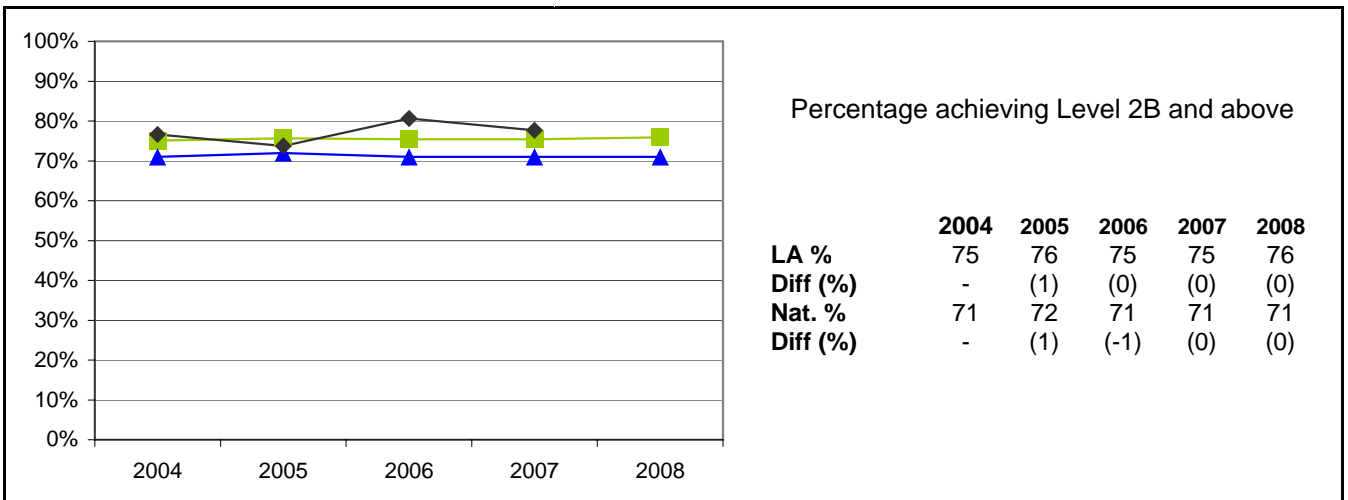
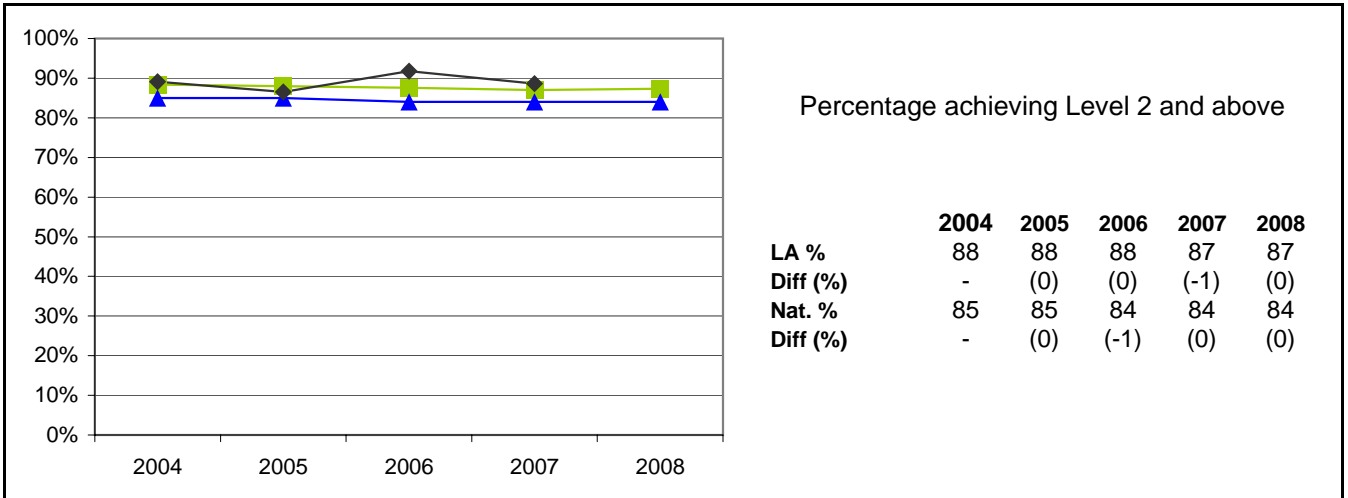
Leicestershire/National attainment for 2004 based on Teacher Assessments for Trial Schools (223 schools) and Task/Test for Non-Trial schools (2 schools)

All attainment figures for Key Stage One include data from all schools with eligible Year 2 pupils, including special schools and the PRU

National figures are based on the information published within the SFR 21/2008 National Curriculum Assessments at Key Stage 1 in England, 2008 (Provisional)

Key Stage One Results 2004 - 2008: Reading

855 Leicestershire



Note:

Leicestershire/National attainment for 2005 - 2008 based on Teacher Assessments

Leicestershire/National attainment for 2004 based on Teacher Assessments for Trial Schools (223 schools) and Task/Test for Non-Trial schools (2 schools)

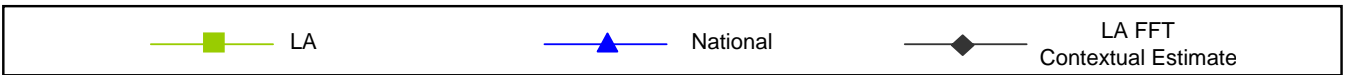
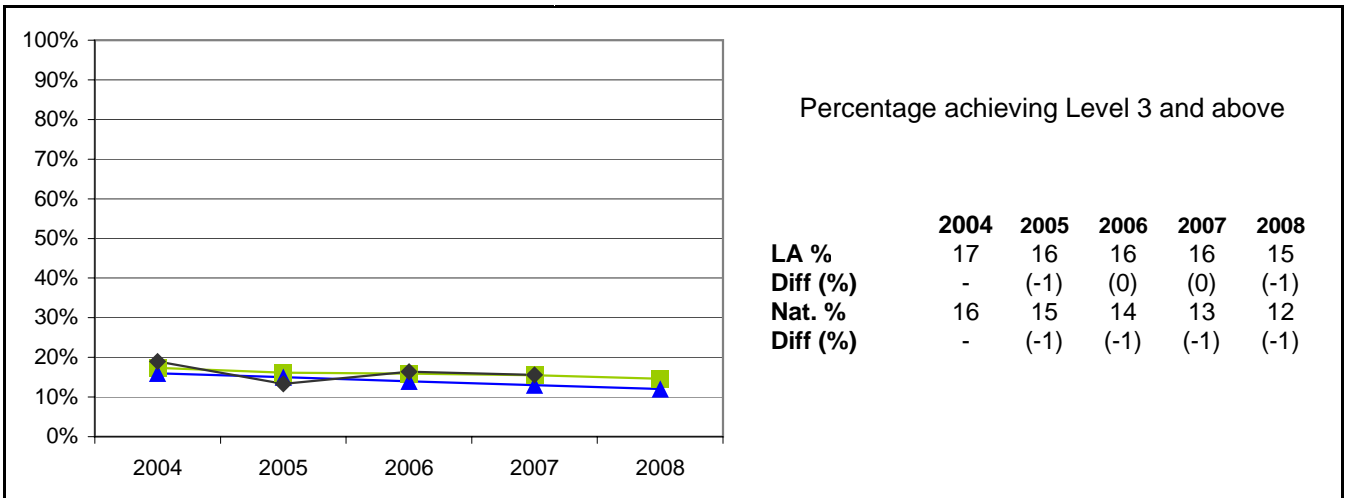
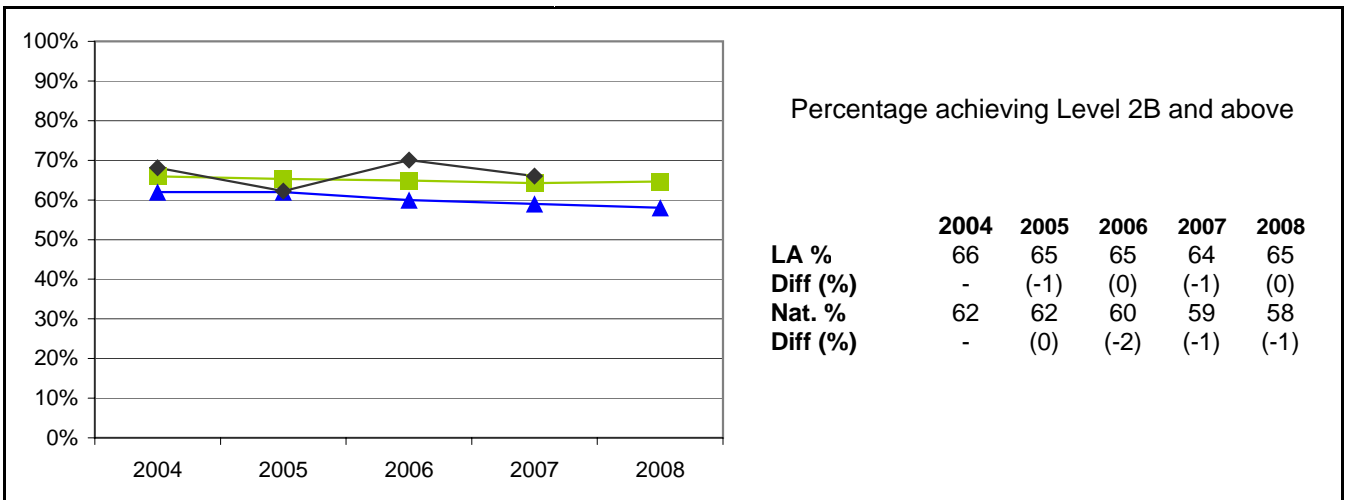
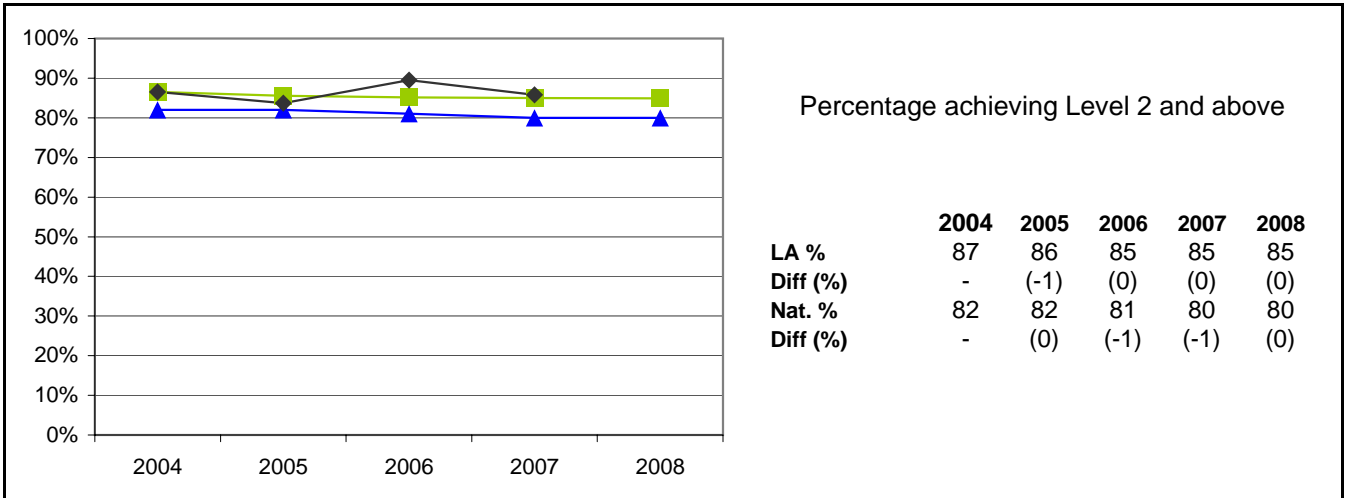
All attainment figures for Key Stage One include data from all schools with eligible Year 2 pupils, including special schools and the PRU

National figures are based on the information published within the SFR 21/2008 National Curriculum Assessments at Key Stage 1 in England, 2008 (Provisional)

For each year, where available on FFT (Fischer Family Trust), a Contextual Estimate has been included. This estimate does not utilise prior attainment but is based on outcomes of pupils using contextual characteristics as the sole basis.

Key Stage One Results 2004 - 2008: Writing

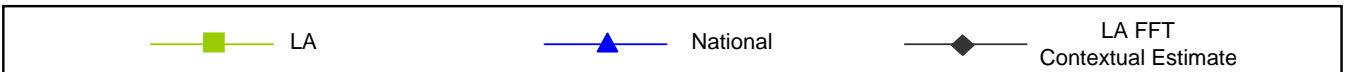
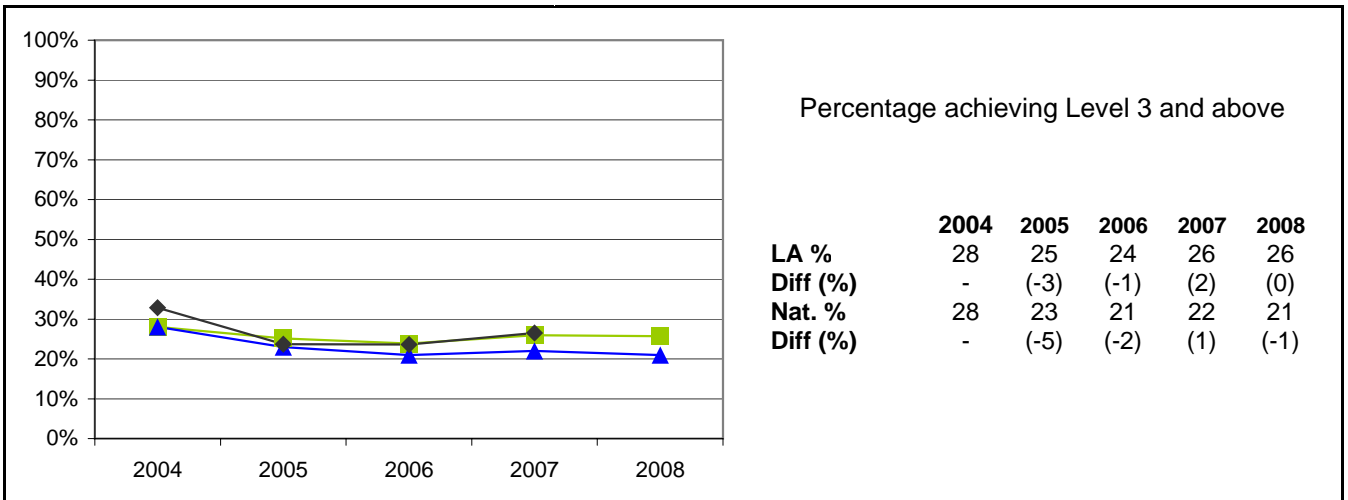
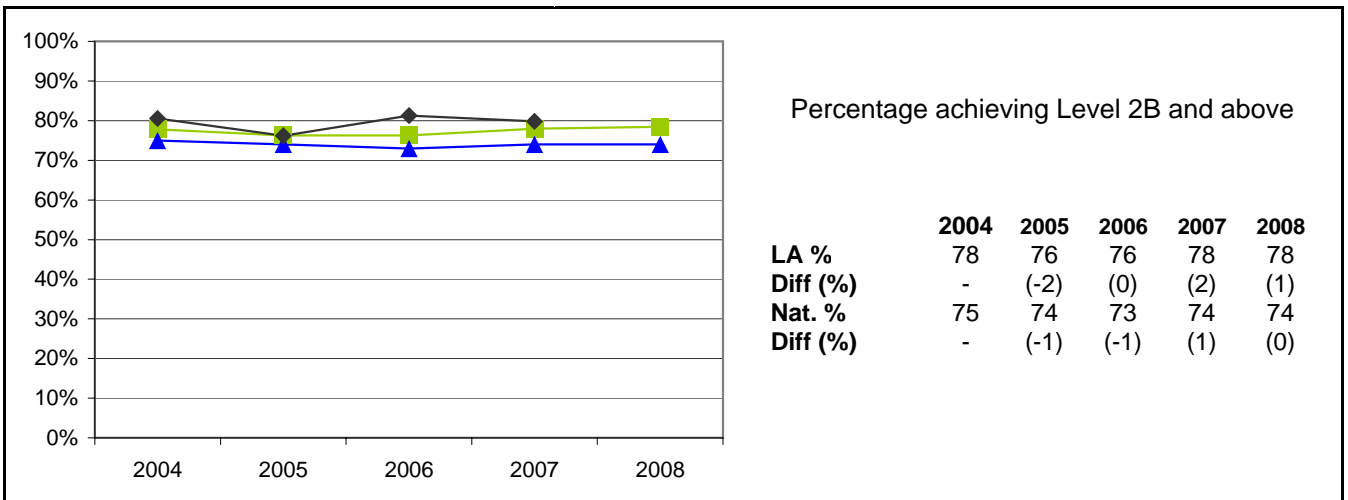
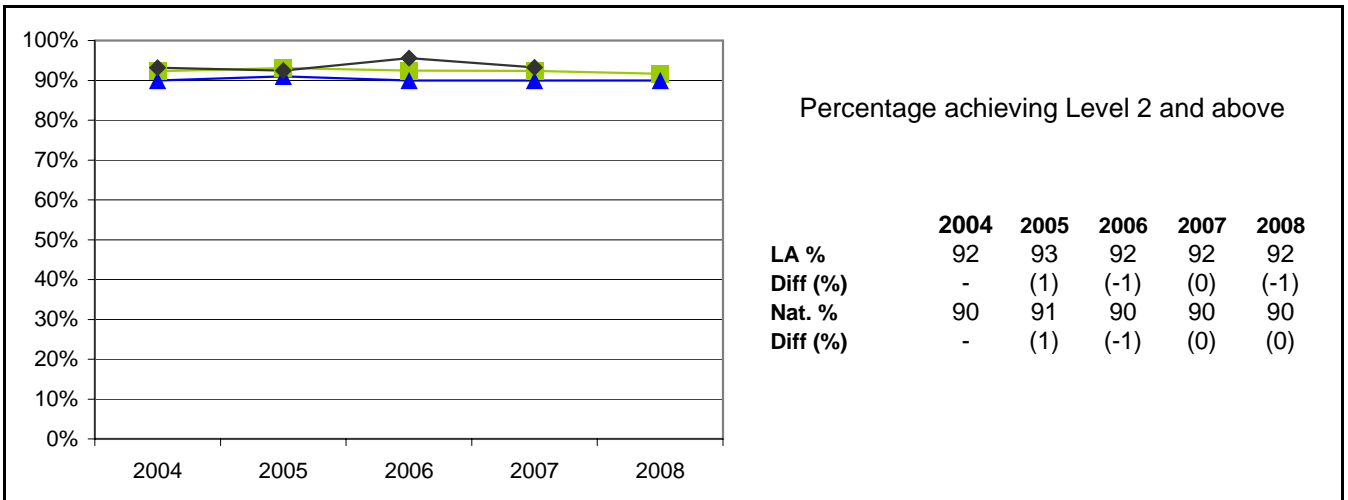
855 Leicestershire



Note:
 Leicestershire/National attainment for 2005 - 2008 based on Teacher Assessments
 Leicestershire/National attainment for 2004 based on Teacher Assessments for Trial Schools (223 schools) and Task/Test for Non-Trial schools (2 schools)
 All attainment figures for Key Stage One include data from all schools with eligible Year 2 pupils, including special schools and the PRU
 National figures are based on the information published within the SFR 21/2008 National Curriculum Assessments at Key Stage 1 in England, 2008 (Provisional)
 For each year, where available on FFT (Fischer Family Trust), a Contextual Estimate has been included. This estimate does not utilise prior attainment but is based on outcomes of pupils using contextual characteristics as the sole basis.

Key Stage One Results 2004 - 2008: Mathematics

855 Leicestershire



Note:

Leicestershire/National attainment for 2005 - 2008 based on Teacher Assessments

Leicestershire/National attainment for 2004 based on Teacher Assessments for Trial Schools (223 schools) and Task/Test for Non-Trial schools (2 schools)

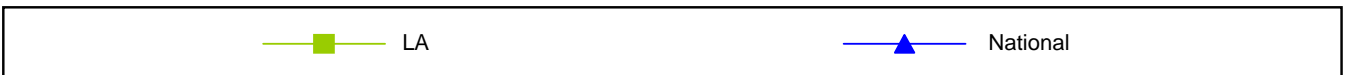
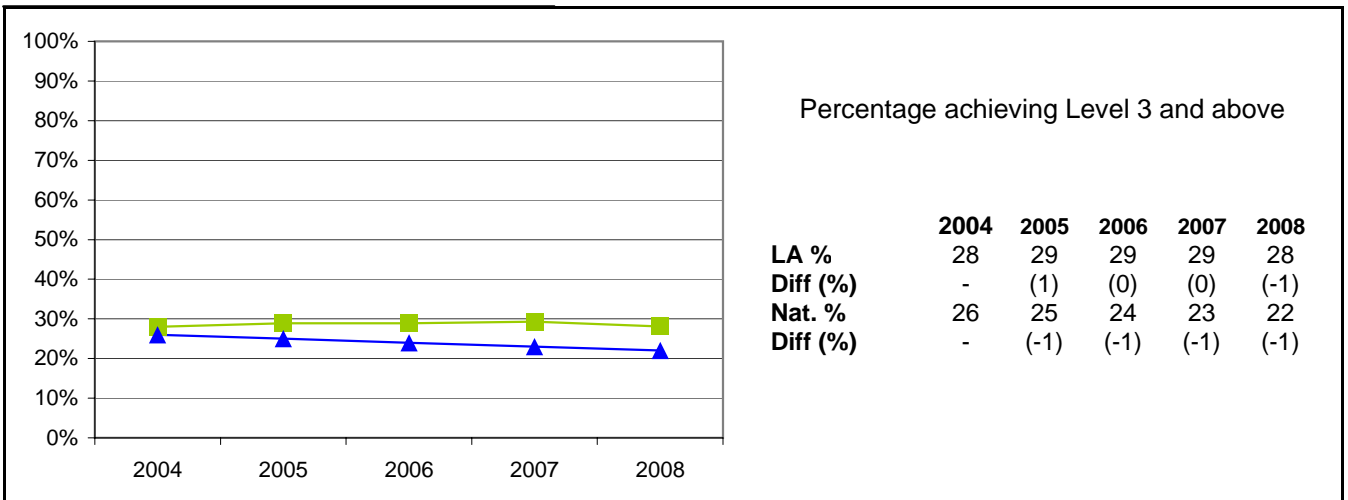
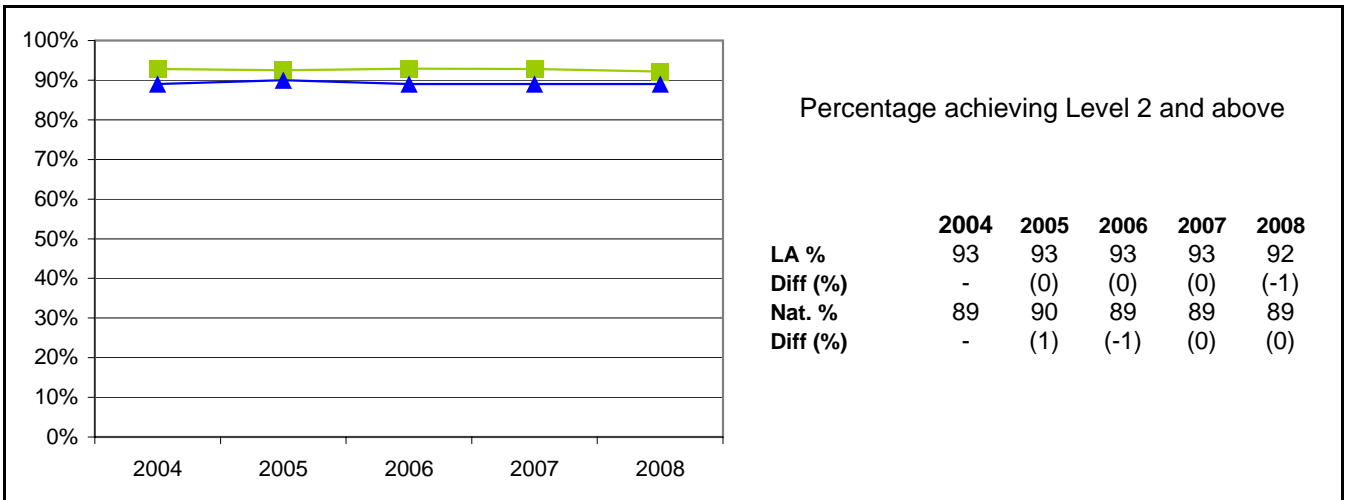
All attainment figures for Key Stage One include data from all schools with eligible Year 2 pupils, including special schools and the PRU

National figures are based on the information published within the SFR 21/2008 National Curriculum Assessments at Key Stage 1 in England, 2008 (Provisional)

For each year, where available on FFT (Fischer Family Trust), a Contextual Estimate has been included. This estimate does not utilise prior attainment but is based on outcomes of pupils using contextual characteristics as the sole basis.

Key Stage One Results 2004 - 2008: Science

855 Leicestershire



Note:

Leicestershire/National attainment for 2005 - 2008 based on Teacher Assessments

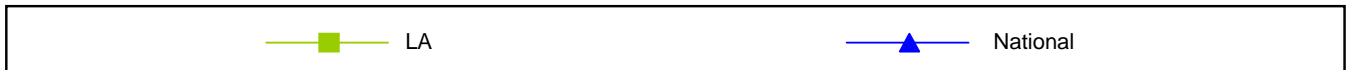
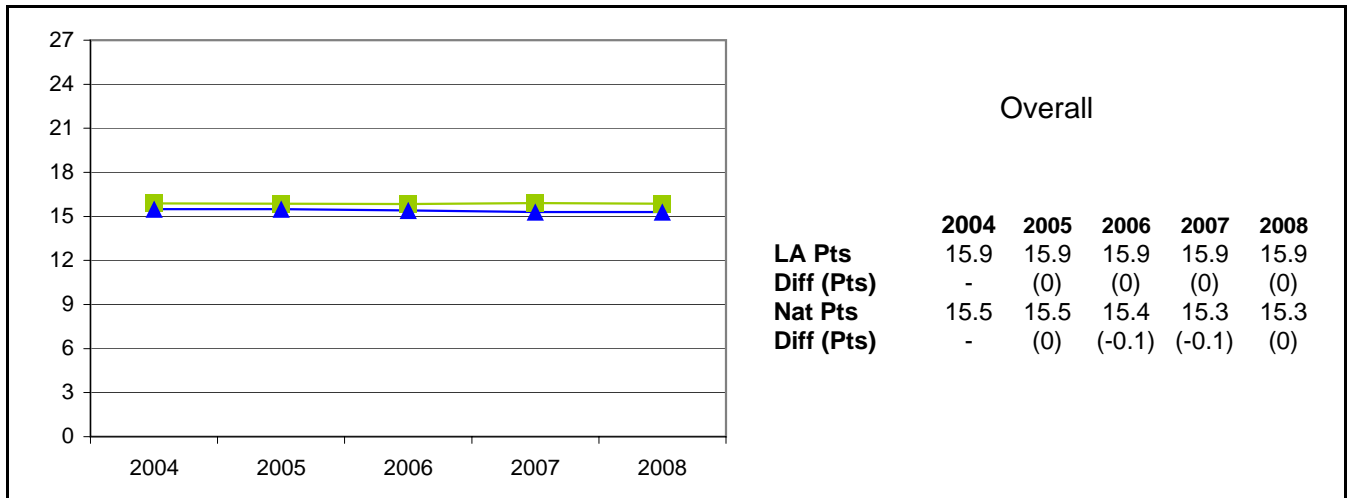
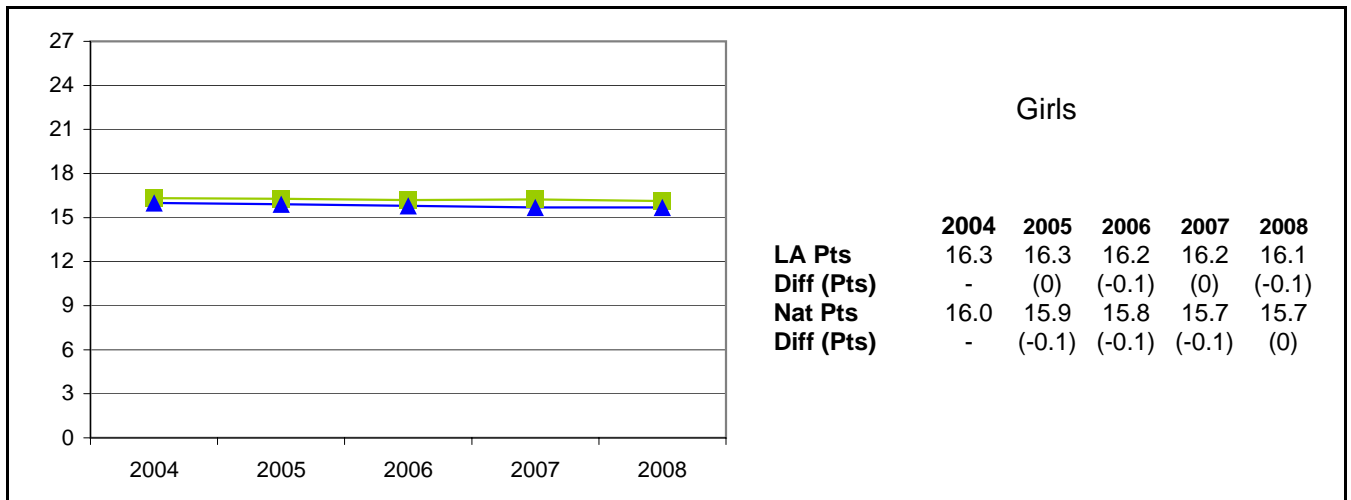
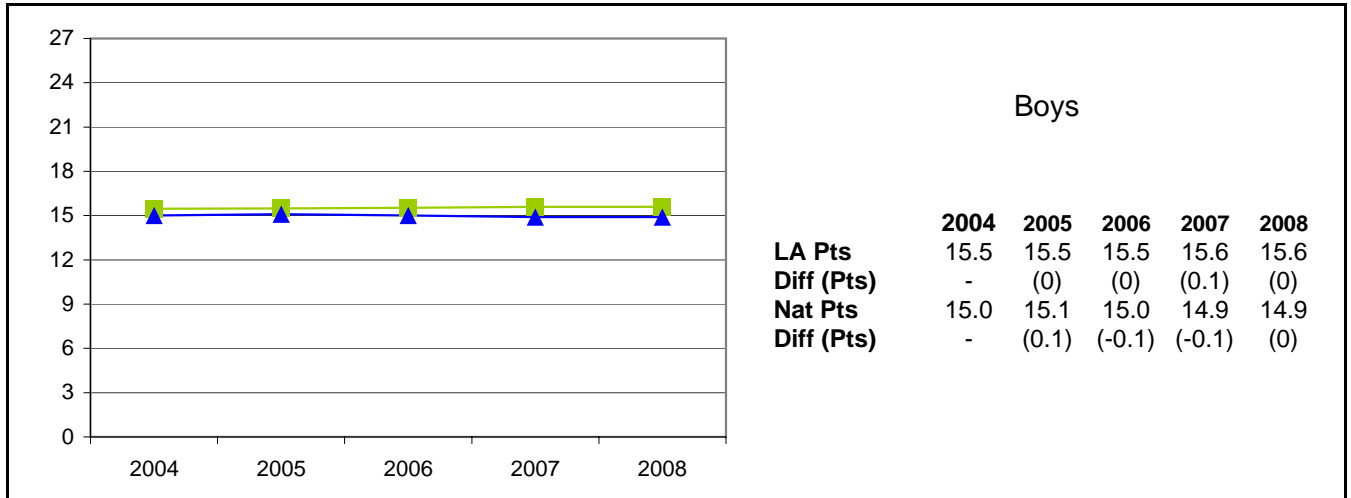
Leicestershire/National attainment for 2004 based on Teacher Assessments for Trial Schools (223 schools) and Task/Test for Non-Trial schools (2 schools)

All attainment figures for Key Stage One include data from all schools with eligible Year 2 pupils, including special schools and the PRU

National figures are based on the information published within the SFR 21/2008 National Curriculum Assessments at Key Stage 1 in England, 2008 (Provisional)

Key Stage One Results 2004 - 2008: Average Point Score

855 Leicestershire



Note:

Leicestershire/National attainment for 2005 and 2006 based on Teacher Assessments

Leicestershire/National attainment for 2004 based on Teacher Assessments for Trial Schools (223 schools) and Task/Test for Non-Trial schools (2 schools)

All attainment figures for Key Stage One include data from all schools with eligible Year 2 pupils, including special schools and the PRU

National figures are based on the information published within the SFR 21/2008 National Curriculum Assessments at Key Stage 1 in England, 2008 (Provisional)

APS for 2005 to 2008 uses the new DCSF approach to the calculation for headline attainment; using Reading, Writing, Mathematics and Science

APS for 2004 uses the historic and current Value Added approach to calculation; using Reading, Writing and Mathematics

Key Stage One Results 2004 - 2008: Pupil Numbers (Gender & Ethnicity)

855 Leicestershire

Gender	LA				
	2004	2005	2006	2007	2008
Boys	3,660	3,703	3,644	3,511	3,418
Girls	3,441	3,393	3,493	3,345	3,267
All	7,101	7,096	7,137	6,856	6,685

Ethnicity	LA				
	2004	2005	2006	2007	2008
White British	6,076	6,155	6,227	5,938	5,843
Irish	12	19	15	10	9
Any other White background	130	111	169	165	135
Total White	6,218	6,285	6,415	6,113	5,987
White and Black Caribbean	61	58	52	52	59
White and Black African	10	14	14	13	14
White and Asian	51	75	72	61	60
Any other Mixed background	64	40	53	56	52
Total Mixed	186	187	191	182	185
Indian	328	344	298	337	292
Pakistani	21	24	21	24	17
Bangladeshi	40	43	49	37	51
Any other Asian background	35	41	43	50	35
Total Asian	424	452	412	448	395
Black Caribbean	8	10	5	6	7
Black African	8	11	17	17	13
Any other Black background	3	1	4	6	3
Total Black	19	22	26	29	23
Chinese	24	33	20	16	21
Any other ethnic group	23	20	24	27	27
Unclassified	207	97	49	41	47
All pupils	7,101	7,096	7,137	6,856	6,685

Note:

Data relates to KS1 cohort only

Notes: LA data for each year relates to all schools (including special schools and the PRU).

Key Stage One Results 2004 - 2008 Gender Analysis: Reading and Writing

855 Leicestershire

Reading

Boys

Level	LA					National				
	2004	2005	2006	2007	2008	2004	2005	2006	2007	2008
2+	85%	84%	84%	84%	84%	81%	81%	80%	80%	80%
2B+	69%	70%	69%	70%	71%	65%	67%	66%	66%	66%
3	25%	23%	24%	25%	25%	24%	22%	21%	22%	21%

Girls

Level	LA					National				
	2004	2005	2006	2007	2008	2004	2005	2006	2007	2008
2+	92%	92%	92%	90%	91%	88%	89%	89%	88%	88%
2B+	81%	82%	82%	81%	81%	76%	78%	77%	77%	77%
3	35%	35%	34%	34%	34%	33%	32%	30%	30%	29%

Gender Gap

Level	LA					National				
	2004	2005	2006	2007	2008	2004	2005	2006	2007	2008
2+	-8%	-8%	-8%	-7%	-7%	-7%	-8%	-9%	-8%	-8%
2B+	-12%	-11%	-12%	-10%	-10%	-11%	-11%	-11%	-11%	-11%
3	-10%	-12%	-10%	-9%	-8%	-9%	-10%	-9%	-8%	-8%

Writing

Boys

Level	LA					National				
	2004	2005	2006	2007	2008	2004	2005	2006	2007	2008
2+	82%	81%	80%	80%	81%	77%	77%	76%	75%	75%
2B+	58%	57%	57%	57%	57%	54%	54%	52%	51%	51%
3	12%	10%	11%	11%	11%	11%	10%	9%	9%	8%

Girls

Level	LA					National				
	2004	2005	2006	2007	2008	2004	2005	2006	2007	2008
2+	91%	91%	91%	90%	89%	87%	88%	87%	86%	86%
2B+	74%	75%	73%	72%	72%	70%	70%	69%	67%	67%
3	23%	23%	21%	21%	19%	21%	20%	19%	17%	16%

Gender Gap

Level	LA					National				
	2004	2005	2006	2007	2008	2004	2005	2006	2007	2008
2+	-9%	-10%	-10%	-10%	-9%	-10%	-11%	-11%	-11%	-11%
2B+	-16%	-18%	-16%	-15%	-15%	-16%	-16%	-17%	-16%	-16%
3	-12%	-13%	-10%	-10%	-8%	-10%	-10%	-10%	-8%	-8%

 Gender gap less than national gender gap

 Gender gap greater than national gender gap

Note:

Leicestershire/National attainment for 2005 - 2008 based on Teacher Assessments

Leicestershire/National attainment for 2004 based on Teacher Assessments for Trial Schools (223 schools) and Task/Test for Non-Trial schools (2 schools)

Leicestershire/National attainment for pre-2004 based on Task/Test data

All attainment figures for Key Stage One include data from all schools with eligible Year 2 pupils, including special schools and the PRU

National figures are based on the information published within the SFR 21/2008 National Curriculum Assessments at Key Stage 1 in England, 2008 (Provisional)

Gender gap is the difference between boys' attainment compared to girls' attainment

Key Stage One Results 2004 - 2008 Gender Analysis: Mathematics

855 Leicestershire

Mathematics

Boys


Level	LA					National				
	2004	2005	2006	2007	2008	2004	2005	2006	2007	2008
2+	91%	92%	92%	92%	90%	90%	90%	89%	88%	88%
2B+	77%	75%	76%	77%	78%	75%	73%	72%	73%	73%
3	32%	27%	27%	29%	30%	31%	25%	24%	24%	24%

Girls

Level	LA					National				
	2004	2005	2006	2007	2008	2004	2005	2006	2007	2008
2+	93%	94%	93%	93%	93%	91%	92%	92%	91%	91%
2B+	78%	77%	77%	79%	79%	76%	75%	74%	75%	75%
3	24%	23%	20%	23%	22%	25%	20%	19%	20%	19%

Gender Gap

Level	LA					National				
	2004	2005	2006	2007	2008	2004	2005	2006	2007	2008
2+	-2%	-2%	-2%	-2%	-3%	-1%	-2%	-3%	-3%	-3%
2B+	-1%	-2%	-1%	-2%	-1%	-1%	-2%	-2%	-2%	-2%
3	7%	4%	7%	6%	8%	6%	5%	5%	4%	5%

 Gender gap less than national gender gap

 Gender gap greater than national gender gap

Note:

Leicestershire/National attainment for 2005 - 2008 based on Teacher Assessments

Leicestershire/National attainment for 2004 based on Teacher Assessments for Trial Schools (223 schools) and Task/Test for Non-Trial schools (2 schools)

Leicestershire/National attainment for pre-2004 based on Task/Test data

All attainment figures for Key Stage One include data from all schools with eligible Year 2 pupils, including special schools and the PRU

National figures are based on the information published within the SFR 21/2008 National Curriculum Assessments at Key Stage 1 in England, 2008 (Provisional)

Gender gap is the difference between boys' attainment compared to girls' attainment

Key Stage One Results 2004 - 2008 Gender Analysis: Speaking & Listening and Science

855 Leicestershire

Speaking & Listening

Boys

Level	LA					National				
	2004	2005	2006	2007	2008	2004	2005	2006	2007	2008
2+	88%	87%	88%	88%	88%	84%	85%	84%	84%	83%
2B+	-	-	-	-	-	-	-	-	-	-
3	20%	19%	21%	20%	21%	20%	19%	19%	18%	18%

Girls

Level	LA					National				
	2004	2005	2006	2007	2008	2004	2005	2006	2007	2008
2+	93%	94%	93%	93%	93%	90%	91%	90%	90%	90%
2B+	-	-	-	-	-	-	-	-	-	-
3	29%	30%	28%	28%	27%	28%	27%	26%	26%	25%

Gender Gap

Level	LA					National				
	2004	2005	2006	2007	2008	2004	2005	2006	2007	2008
2+	-5%	-6%	-5%	-5%	-6%	-6%	-6%	-6%	-6%	-7%
2B+	-	-	-	-	-	-	-	-	-	-
3	-9%	-10%	-7%	-8%	-6%	-8%	-8%	-7%	-8%	-7%

Science

Boys

Level	LA					National				
	2004	2005	2006	2007	2008	2004	2005	2006	2007	2008
2+	92%	91%	92%	92%	91%	88%	88%	88%	87%	87%
2B+	-	-	-	-	-	-	-	-	-	-
3	30%	30%	31%	31%	30%	27%	26%	25%	24%	23%

Girls

Level	LA					National				
	2004	2005	2006	2007	2008	2004	2005	2006	2007	2008
2+	94%	94%	94%	94%	93%	91%	91%	91%	90%	90%
2B+	-	-	-	-	-	-	-	-	-	-
3	25%	28%	27%	28%	26%	25%	24%	23%	22%	21%

Gender Gap

Level	LA					National				
	2004	2005	2006	2007	2008	2004	2005	2006	2007	2008
2+	-2%	-2%	-2%	-1%	-2%	-3%	-3%	-3%	-3%	-3%
2B+	-	-	-	-	-	-	-	-	-	-
3	5%	1%	4%	3%	4%	2%	2%	2%	2%	2%

 Gender gap less than national gender gap

 Gender gap greater than national gender gap

Note:

Leicestershire/National attainment for 2005 - 2008 based on Teacher Assessments

Leicestershire/National attainment for 2004 based on Teacher Assessments for Trial Schools (223 schools) and Task/Test for Non-Trial schools (2 schools)

Leicestershire/National attainment for pre-2004 based on Task/Test data

All attainment figures for Key Stage One include data from all schools with eligible Year 2 pupils, including special schools and the PRU

National figures are based on the information published within the SFR 21/2008 National Curriculum Assessments at Key Stage 1 in England, 2008 (Provisional)

Gender gap is the difference between boys' attainment compared to girls' attainment

Key Stage One Results 2004 - 2008 Ethnicity Analysis: Reading


855 Leicestershire


Percentage achieving Level 2+

Ethnicity	LA					National				
	2004	2005	2006	2007	2008	2004	2005	2006	2007	2008
White British	89%	88%	88%	87%	88%	86%	86%	86%	85%	-
Irish	83%	100%	100%	90%	100%	85%	86%	85%	84%	-
Any other White background	78%	90%	77%	75%	70%	77%	77%	74%	73%	-
Total White	88%	88%	87%	87%	87%	85%	86%	85%	85%	-
White and Black Caribbean	80%	93%	90%	87%	85%	84%	84%	82%	81%	-
White and Black African	80%	86%	100%	100%	100%	83%	82%	84%	83%	-
White and Asian	92%	95%	93%	93%	95%	89%	90%	88%	88%	-
Any other Mixed background	91%	95%	92%	93%	81%	86%	86%	85%	84%	-
Total Mixed	87%	94%	93%	92%	88%	85%	85%	85%	84%	-
Indian	93%	91%	94%	93%	93%	89%	88%	89%	88%	-
Pakistani	86%	88%	90%	88%	71%	77%	77%	77%	77%	-
Bangladeshi	78%	86%	82%	76%	88%	76%	78%	78%	79%	-
Any other Asian background	86%	83%	72%	80%	77%	83%	85%	84%	84%	-
Total Asian	91%	90%	90%	90%	90%	81%	81%	81%	81%	-
Black Caribbean	88%	100%	100%	100%	100%	81%	81%	80%	81%	-
Black African	88%	64%	82%	88%	85%	78%	78%	78%	79%	-
Any other Black background	100%	100%	75%	100%	67%	81%	80%	80%	79%	-
Total Black	89%	82%	85%	93%	87%	79%	79%	79%	79%	-
Chinese	92%	88%	95%	94%	95%	90%	90%	90%	88%	-
Any other ethnic group	74%	65%	83%	78%	85%	75%	76%	74%	75%	-
Unclassified	83%	80%	84%	83%	81%	77%	76%	71%	-	-
All pupils	88%	88%	88%	87%	87%	85%	85%	84%	84%	-


Differences

Ethnicity	LA vs. National				
	2004	2005	2006	2007	2008
White British	3%	2%	2%	2%	-
Irish	-2%	14%	15%	6%	-
Any other White background	1%	13%	3%	2%	-
Total White	3%	2%	2%	2%	-
White and Black Caribbean	-4%	9%	8%	6%	-
White and Black African	-3%	4%	16%	17%	-
White and Asian	3%	5%	5%	5%	-
Any other Mixed background	5%	9%	7%	9%	-
Total Mixed	2%	9%	8%	8%	-
Indian	4%	3%	5%	5%	-
Pakistani	9%	11%	13%	11%	-
Bangladeshi	2%	8%	4%	-3%	-
Any other Asian background	3%	-2%	-12%	-4%	-
Total Asian	10%	9%	9%	9%	-
Black Caribbean	6%	19%	20%	19%	-
Black African	10%	-14%	4%	9%	-
Any other Black background	19%	20%	-5%	21%	-
Total Black	10%	3%	6%	14%	-
Chinese	2%	-2%	5%	6%	-
Any other ethnic group	-1%	-11%	9%	3%	-
Unclassified	6%	4%	13%	-	-
All pupils	3%	3%	4%	3%	-

 Performance greater than the national average for the ethnic group

 Performance less than the national average for the ethnic group

 Attainment greater than the comparator figure

 Attainment less than the comparator figure

Note:

Leicestershire/National attainment for 2005 - 2008 based on Teacher Assessments

Leicestershire/National attainment for 2004 based on Teacher Assessments for Trial Schools (223 schools) and Task/Test for Non-Trial schools (2 schools)

All attainment figures for Key Stage One include data from all schools with eligible Year 2 pupils, including special schools and the PRU

National figures are based on the information published within the SFR 30/2006, National Curriculum Assessments at Key Stage 1 in England, 2006 (Provisional)

Key Stage One Results 2004 - 2008 Ethnicity Analysis: Writing


855 Leicestershire


Percentage achieving Level 2+

Ethnicity	LA					National				
	2004	2005	2006	2007	2008	2004	2005	2006	2007	2008
White British	87%	86%	85%	85%	85%	83%	84%	83%	82%	-
Irish	67%	100%	100%	80%	100%	83%	84%	82%	81%	-
Any other White background	77%	85%	74%	73%	65%	75%	74%	72%	70%	-
Total White	87%	86%	85%	85%	85%	83%	83%	82%	81%	-
White and Black Caribbean	82%	88%	88%	85%	76%	81%	82%	79%	78%	-
White and Black African	80%	86%	86%	100%	100%	79%	78%	81%	80%	-
White and Asian	88%	87%	89%	92%	95%	85%	87%	86%	86%	-
Any other Mixed background	91%	88%	94%	88%	79%	82%	83%	82%	81%	-
Total Mixed	87%	87%	90%	89%	85%	82%	82%	82%	81%	-
Indian	91%	89%	93%	91%	91%	86%	86%	86%	85%	-
Pakistani	86%	83%	90%	88%	71%	73%	73%	73%	72%	-
Bangladeshi	80%	81%	76%	68%	88%	74%	75%	75%	77%	-
Any other Asian background	86%	80%	72%	80%	71%	80%	82%	81%	81%	-
Total Asian	89%	87%	89%	88%	88%	78%	78%	78%	78%	-
Black Caribbean	88%	100%	100%	100%	100%	75%	76%	76%	75%	-
Black African	75%	64%	88%	88%	85%	74%	73%	74%	74%	-
Any other Black background	100%	100%	75%	100%	67%	76%	76%	75%	74%	-
Total Black	84%	82%	88%	93%	87%	74%	75%	75%	74%	-
Chinese	88%	82%	95%	94%	86%	88%	88%	87%	86%	-
Any other ethnic group	74%	65%	75%	78%	78%	71%	73%	71%	71%	-
Unclassified	81%	77%	71%	78%	81%	73%	73%	68%	-	-
All pupils	87%	86%	85%	85%	85%	82%	82%	81%	80%	-


Differences

Ethnicity	LA vs. National				
	2004	2005	2006	2007	2008
White British	4%	2%	2%	3%	-
Irish	-16%	16%	18%	-1%	-
Any other White background	2%	11%	2%	3%	-
Total White	4%	3%	3%	4%	-
White and Black Caribbean	1%	6%	9%	7%	-
White and Black African	1%	8%	5%	20%	-
White and Asian	3%	0%	3%	6%	-
Any other Mixed background	9%	5%	12%	6%	-
Total Mixed	5%	5%	8%	8%	-
Indian	5%	3%	7%	6%	-
Pakistani	13%	10%	17%	16%	-
Bangladeshi	6%	6%	1%	-9%	-
Any other Asian background	6%	-2%	-9%	-1%	-
Total Asian	11%	9%	11%	10%	-
Black Caribbean	13%	24%	24%	25%	-
Black African	1%	-9%	14%	14%	-
Any other Black background	24%	24%	0%	26%	-
Total Black	10%	7%	13%	19%	-
Chinese	-1%	-6%	8%	8%	-
Any other ethnic group	3%	-8%	4%	7%	-
Unclassified	8%	4%	3%	-	-
All pupils	5%	4%	4%	5%	-

 Performance greater than the national average for the ethnic group

 Performance less than the national average for the ethnic group

 Attainment greater than the comparator figure

 Attainment less than the comparator figure

Note:

Leicestershire/National attainment for 2005 - 2008 based on Teacher Assessments

Leicestershire/National attainment for 2004 based on Teacher Assessments for Trial Schools (223 schools) and Task/Test for Non-Trial schools (2 schools)

All attainment figures for Key Stage One include data from all schools with eligible Year 2 pupils, including special schools and the PRU

National figures are based on the information published within the SFR 30/2006, National Curriculum Assessments at Key Stage 1 in England, 2006 (Provisional)

Key Stage One Results 2004 - 2008 Ethnicity Analysis: Mathematics


855 Leicestershire


Percentage achieving Level 2+

Ethnicity	LA					National				
	2004	2005	2006	2007	2008	2004	2005	2006	2007	2008
White British	93%	93%	93%	93%	92%	91%	92%	91%	91%	-
Irish	67%	100%	93%	90%	100%	91%	92%	91%	90%	-
Any other White background	88%	95%	87%	81%	79%	87%	87%	86%	84%	-
Total White	92%	93%	92%	92%	92%	91%	92%	91%	91%	-
White and Black Caribbean	87%	95%	87%	96%	88%	89%	89%	88%	89%	-
White and Black African	80%	100%	100%	100%	100%	88%	89%	90%	89%	-
White and Asian	90%	96%	99%	98%	97%	92%	94%	93%	93%	-
Any other Mixed background	95%	95%	92%	95%	90%	91%	91%	90%	90%	-
Total Mixed	90%	96%	94%	97%	92%	90%	91%	90%	90%	-
Indian	95%	94%	96%	96%	93%	92%	92%	92%	92%	-
Pakistani	95%	92%	95%	92%	76%	83%	84%	83%	83%	-
Bangladeshi	78%	95%	88%	76%	88%	83%	86%	84%	86%	-
Any other Asian background	94%	90%	86%	92%	94%	90%	91%	90%	90%	-
Total Asian	94%	94%	94%	93%	92%	86%	87%	86%	87%	-
Black Caribbean	88%	100%	100%	100%	100%	85%	86%	86%	85%	-
Black African	88%	64%	82%	94%	85%	83%	83%	84%	84%	-
Any other Black background	67%	100%	100%	100%	100%	85%	86%	85%	85%	-
Total Black	84%	82%	88%	97%	91%	84%	85%	84%	84%	-
Chinese	96%	97%	100%	94%	100%	95%	96%	96%	95%	-
Any other ethnic group	78%	90%	88%	81%	89%	85%	87%	84%	84%	-
Unclassified	88%	91%	78%	85%	83%	84%	84%	80%	-	-
All pupils	92%	93%	92%	92%	92%	90%	91%	90%	90%	-


Differences

Ethnicity	LA vs. National				
	2004	2005	2006	2007	2008
White British	2%	1%	2%	2%	-
Irish	-24%	8%	2%	0%	-
Any other White background	1%	8%	1%	-3%	-
Total White	1%	1%	1%	1%	-
White and Black Caribbean	-2%	6%	-1%	7%	-
White and Black African	-8%	11%	10%	11%	-
White and Asian	-2%	2%	6%	5%	-
Any other Mixed background	4%	4%	2%	5%	-
Total Mixed	0%	5%	4%	7%	-
Indian	3%	2%	4%	4%	-
Pakistani	12%	8%	12%	9%	-
Bangladeshi	-5%	9%	4%	-10%	-
Any other Asian background	4%	-1%	-4%	2%	-
Total Asian	8%	7%	8%	6%	-
Black Caribbean	3%	14%	14%	15%	-
Black African	5%	-19%	-2%	10%	-
Any other Black background	-18%	14%	15%	15%	-
Total Black	0%	-3%	4%	13%	-
Chinese	1%	1%	4%	-1%	-
Any other ethnic group	-7%	3%	4%	-3%	-
Unclassified	4%	7%	-2%	-	-
All pupils	2%	2%	2%	2%	-

 Performance greater than the national average for the ethnic group

 Performance less than the national average for the ethnic group

 Attainment greater than the comparator figure

 Attainment less than the comparator figure

Note:

Leicestershire/National attainment for 2005 - 2008 based on Teacher Assessments

Leicestershire/National attainment for 2004 based on Teacher Assessments for Trial Schools (223 schools) and Task/Test for Non-Trial schools (2 schools)

All attainment figures for Key Stage One include data from all schools with eligible Year 2 pupils, including special schools and the PRU

National figures are based on the information published within the SFR 30/2006, National Curriculum Assessments at Key Stage 1 in England, 2006 (Provisional)