



**Key Stage
One
Officer Pack
2009**

Performance Team,
Knowledge Management, CYPS
Jason Howson : 0116 305 6353
Richard Gretton: 0116 305 6638

KEY STAGE ONE GRAPH PACK

Background

This report provides an overview of school level, local authority and national Key Stage One attainment data. The purpose of the report is to provide basic attainment comparisons between the local and national situation and to include further analysis of attainment by gender and ethnicity.

The Key Stage One Graph Pack includes the following contents:

- Breakdown of 2009 Key Stage One attainment
- Headline contextual data for the 2009 Key Stage One cohort
- Speaking and Listening Attainment 2+ and 3+ 2005 to 2009
- Reading 2+, 2B+ and 3+ 2005 to 2009
- Writing 2+, 2B+ and 3+ 2005 to 2009
- Mathematics 2+, 2B+ and 3+ 2005 to 2009
- Science 2+ and 3+ 2005 to 2009
- Key Stage One Average Point Scores by Gender 2005 to 2009
- Key Stage One Pupil number counts by Ethnicity and Gender between 2005 and 2009
- Gender Analysis 2+, 2B+ and 3+ 2005 to 2009
- Ethnicity Analysis 2+ 2005 to 2009

Technical details

1. Key Stage One attainment data is collected from schools by the LA and passed to the DCSF. All the School level and Local Authority data is derived from this data set. To allow analysis based on ethnicity the most recently available Spring School Census data has been matched into the data set.
2. The source of the National data for 2009 is the DCFS Statistical First Release SFR 21/2009 National Curriculum Assessments at Key Stage 1 in England, 2009. All historic national data has been obtained from a variety of DCSF attainment sources.
3. Included in the Graph Pack are sections on gender and ethnicity analysis. For gender analysis purposes we have highlighted where the gender gap is larger than the national average and for ethnic analysis purposes we have highlighted where headline performance is greater than or less than average national or local performance. No degree of significance is placed on the differences highlighted.
4. Also included in the analysis are FFT (Fischer Family Trust) Key Stage One Contextual Estimates for 2005 to 2008. These newly derived estimates by FFT use purely the contextual characteristics of a cohort to define estimated outcomes. Using historic data FFT have examined the outcomes at Key Stage One by pupil characteristics nationally to enable them to develop school level estimates for Key Stage One.

Enquiries

Please contact the following people listed below if you wish to make any comments regarding this report or if you have any queries regarding the analysis.

As this analysis is very much developmental we would welcome any comments so that the product can improve and evolve.

Report contacts:

<p>Richard Gretton Statistic Manager Performance Team, Knowledge Management Children & Young People's Service Leicestershire County Council</p> <p>Tel No: 0116 305 6638 E-Mail: richard.gretton@leics.gov.uk</p>	<p>Jason Howson Analyst Performance Team, Knowledge Management Children & Young People's Service Leicestershire County Council</p> <p>Tel No: 0116 305 6353 E-Mail: jason.howson@leics.gov.uk</p>
<p>Lynda Smith School Development Adviser School Improvement & Performance Service Children & Young People's Service Leicestershire County Council</p> <p>Tel No: 0116 305 7412 E-Mail: lynda.smith@leics.gov.uk</p>	

Key Stage One Results 2009: Percentage of seven year olds in school

855 Leicestershire

Achievement Data

Boys	A	D	W	1	2	3	4+	2c	2b	2a	Level 2 & above	Level 2b & above	Level 3 & above	Average Points
Speaking & Listening	0	0	2	11	67	20	0	-	-	-	87	-	20	15.3
Reading	0	0	3	15	59	24	0	13	23	22	83	69	24	15.4
Writing	0	0	4	17	69	10	0	23	29	18	79	56	10	14.0
Overall Mathematics	0	0	2	8	62	28	0	14	23	24	90	76	28	16.2
Overall Science	0	*	2	7	63	28	0	-	-	-	91	-	28	16.0
Overall														15.4

Girls	A	D	W	1	2	3	4+	2c	2b	2a	Level 2 & above	Level 2b & above	Level 3 & above	Average Points
Speaking & Listening	0	0	1	5	64	30	0	-	-	-	94	-	30	16.4
Reading	0	0	1	8	55	36	0	10	21	25	91	81	36	16.8
Writing	0	0	2	8	71	20	0	17	28	26	91	74	20	15.7
Overall Mathematics	0	0	1	6	72	22	0	14	27	30	93	79	22	16.2
Overall Science	0	*	1	5	68	26	0	-	-	-	94	-	26	16.1
Overall														16.2

Boys & Girls	A	D	W	1	2	3	4+	2c	2b	2a	Level 2 & above	Level 2b & above	Level 3 & above	Average Points
Speaking & Listening	0	0	1	8	66	25	0	-	-	-	91	-	25	15.8
Reading	0	0	2	11	57	30	0	12	22	24	87	75	30	16.1
Writing	0	0	3	13	70	15	0	20	28	22	85	65	15	14.8
Overall Mathematics	0	0	1	7	67	25	0	14	25	27	92	78	25	16.2
Overall Science	0	*	1	6	65	27	0	-	-	-	92	-	27	16.1
Overall														15.8

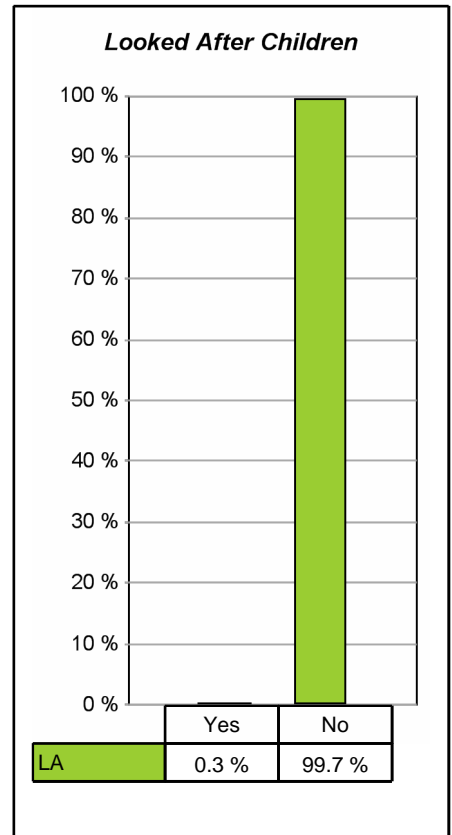
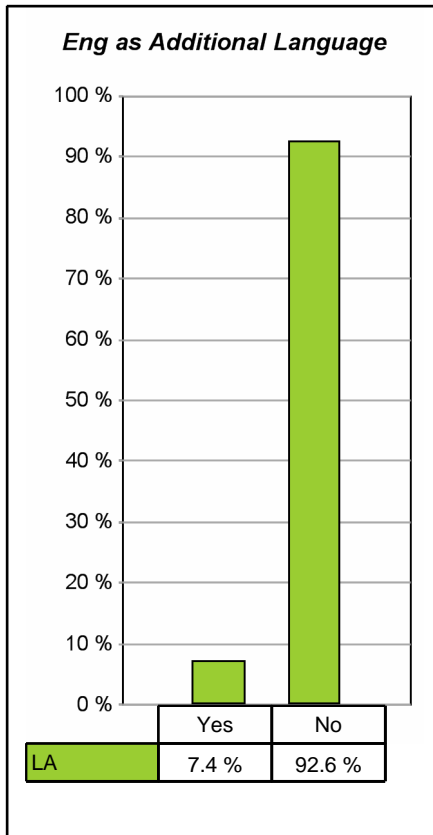
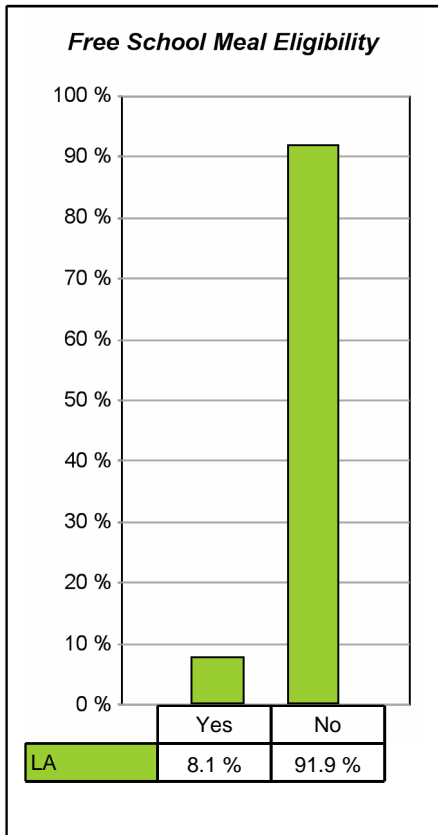
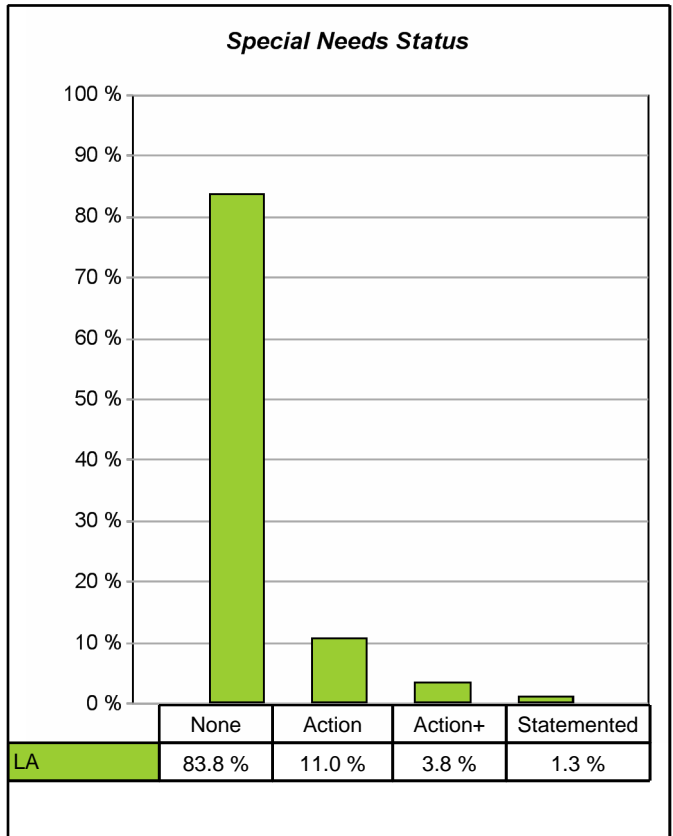
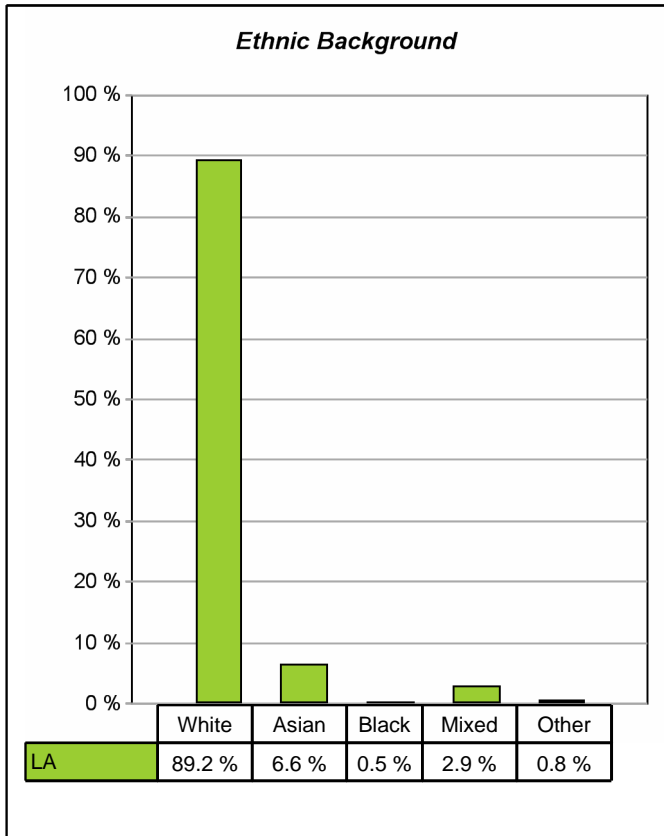
*Absent and Disapplied combined for Science

Data relates to all Leicestershire schools, including special schools

Overall APS calculated using Reading, Writing, Maths and Science only

Key Stage One Results 2009: School Census 2009 Contextual Data

855 Leicestershire



The contextual data relates to the Key Stage One cohort only

Ethnic Background does not include Refused and Information Not Obtained Classified pupils

Key Stage One Results 2005 - 2009: Pupil Numbers (Gender & Ethnicity)

855 Leicestershire

Gender	LA				
	2005	2006	2007	2008	2009
Boys	3,703	3,641	3,512	3,418	3,344
Girls	3,393	3,493	3,343	3,267	3,192
All	7,096	7,134	6,855	6,685	6,536

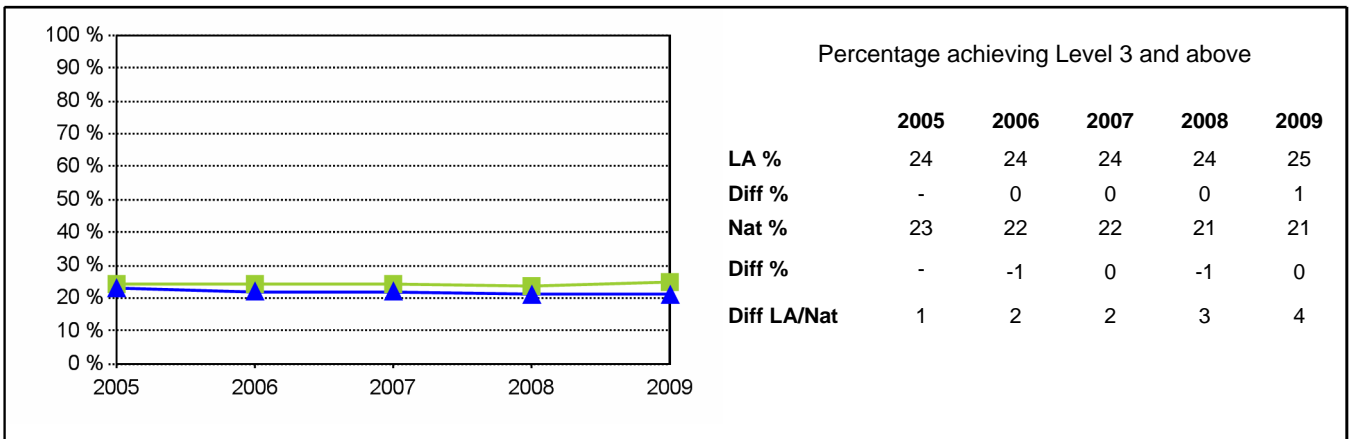
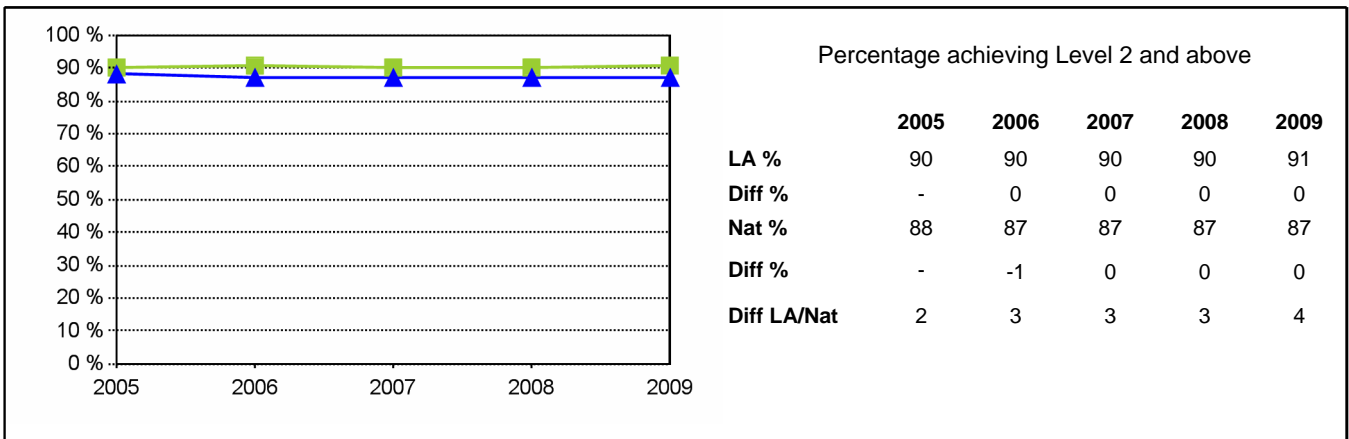
Ethnicity	LA				
	2005	2006	2007	2008	2009
White British	6,155	6,226	5,937	5,843	5,638
Irish	19	15	10	9	10
Irish Traveler	3	10	4	8	14
Gypsy/Roma	5	8	12	14	11
Any other White background	103	154	149	113	117
Total White	6,285	6,413	6,112	5,987	5,790
White and Black Caribbean	58	52	52	59	40
White and Black African	14	14	13	14	20
White and Asian	75	72	61	60	74
Any other Mixed background	40	53	56	52	53
Total Mixed	187	191	182	185	187
Indian	344	298	337	292	302
Pakistani	24	21	24	17	32
Bangladeshi	43	49	37	51	53
Any other Asian background	41	43	50	35	41
Total Asian	452	412	448	395	428
Black Caribbean	10	5	6	7	8
Black African	11	17	17	13	19
Any other Black background	1	4	6	3	5
Total Black	22	26	29	23	32
Chinese	33	20	16	21	25
Any other ethnic group	20	24	27	27	26
Unclassified	97	48	41	47	48
All pupils	7,096	7,134	6,855	6,685	6,536

Data relates to KS1 cohort only

LA data for each year relates to all schools, including special schools

Key Stage One Results 2005 - 2009: Speaking and Listening

855 Leicestershire

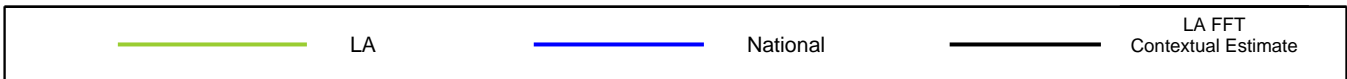
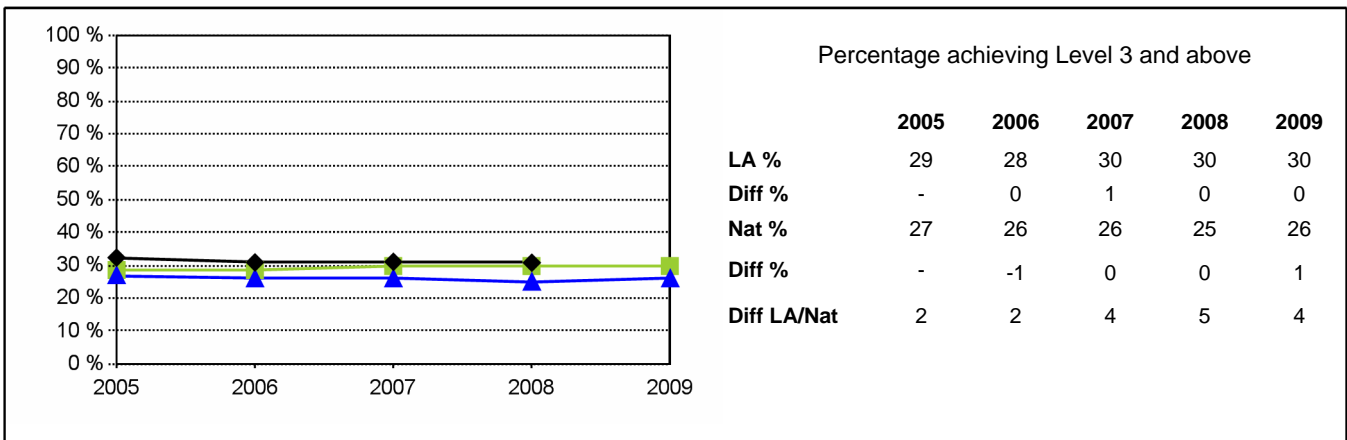
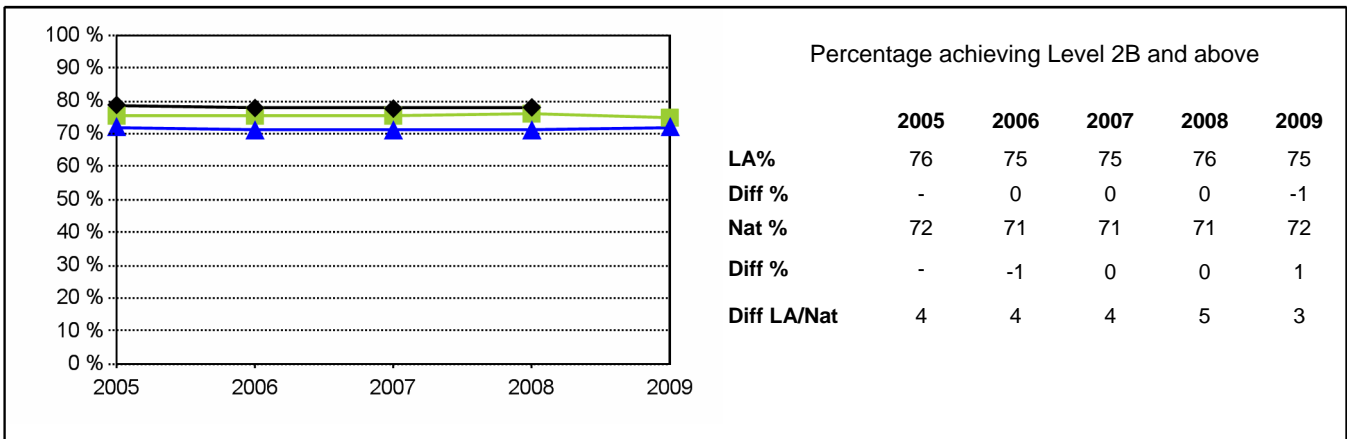
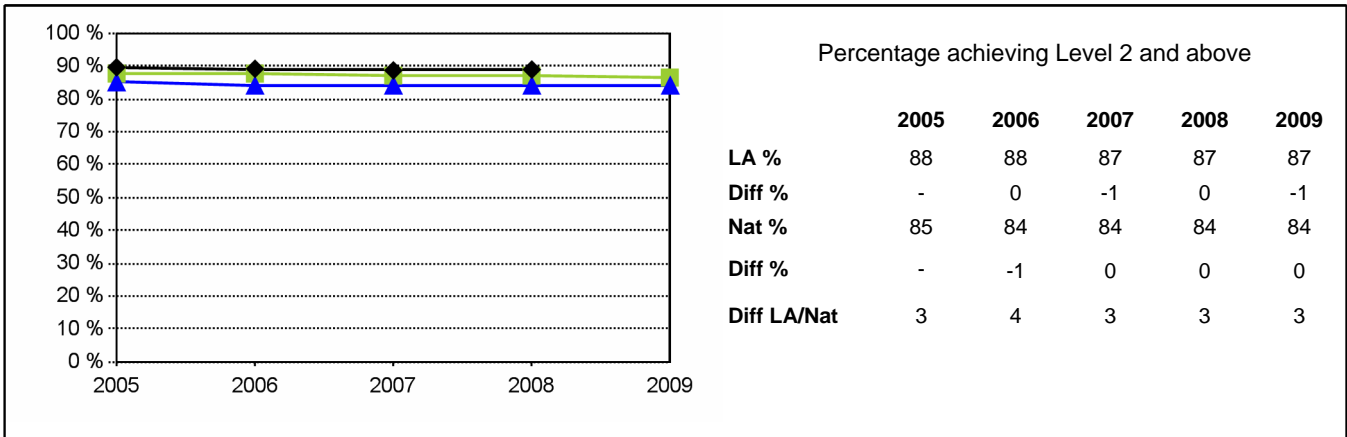


All attainment figures for Key Stage One include data from all schools with eligible Year 2 pupils, including special schools

National figures are based on the information published within the SFR 21/2009 National Curriculum Assessments at Key Stage 1 in England, 2009

Key Stage One Results 2005 - 2009: Reading

855 Leicestershire

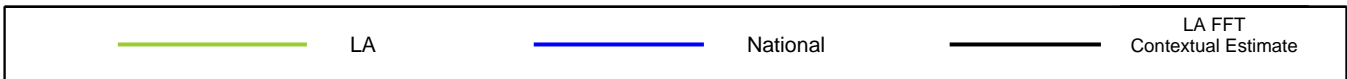
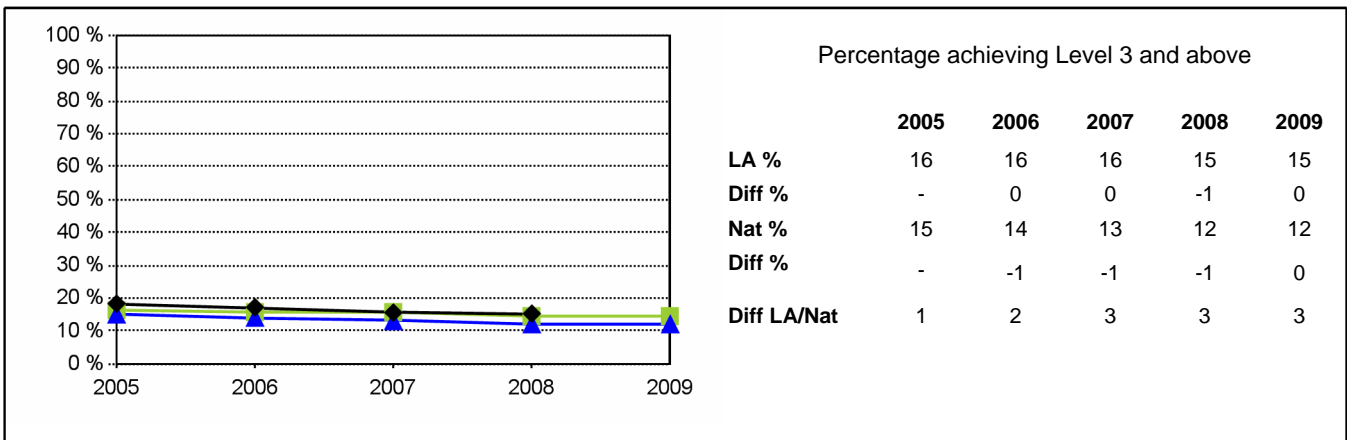
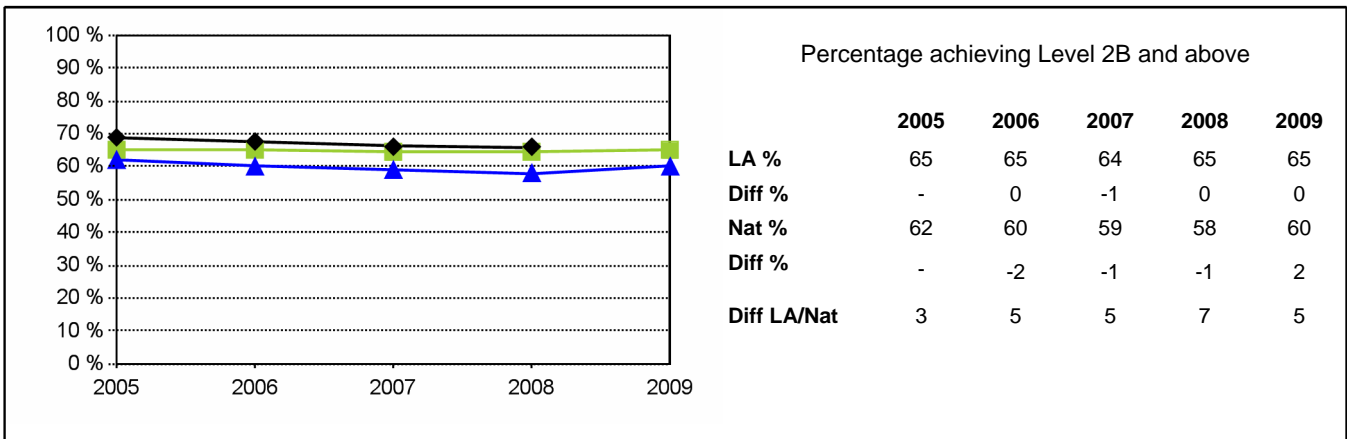
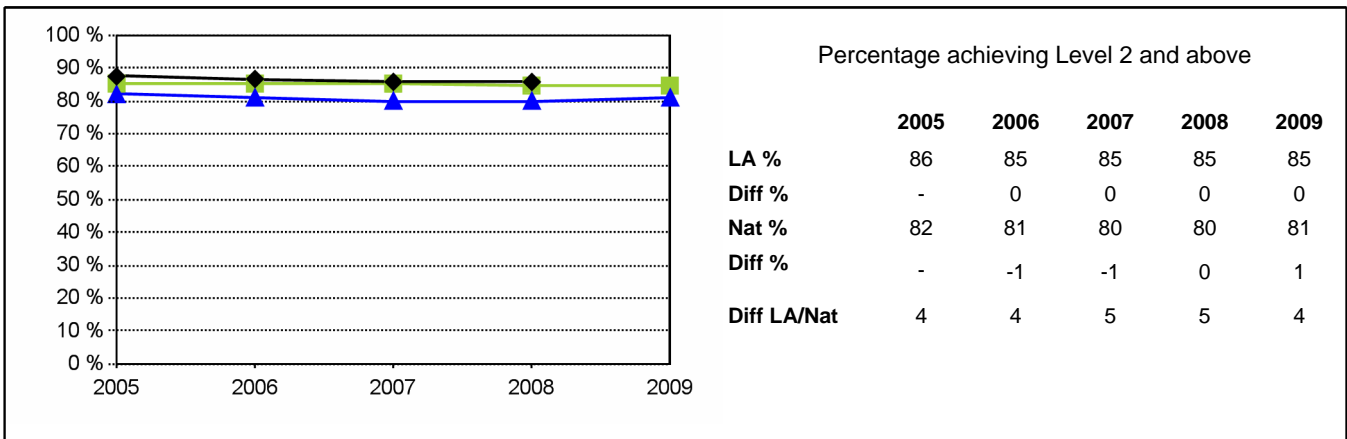


All attainment figures for Key Stage One include data from all schools with eligible Year 2 pupils, including special schools

National figures are based on the information published within the SFR 21/2009 National Curriculum Assessments at Key Stage 1 in England, 2009

Key Stage One Results 2005 - 2009: Writing

855 Leicestershire

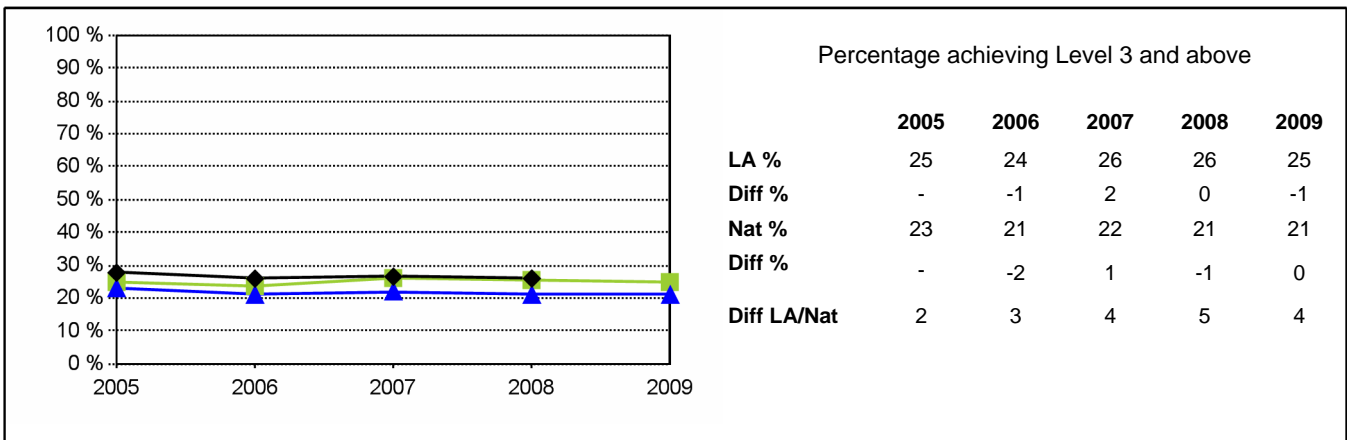
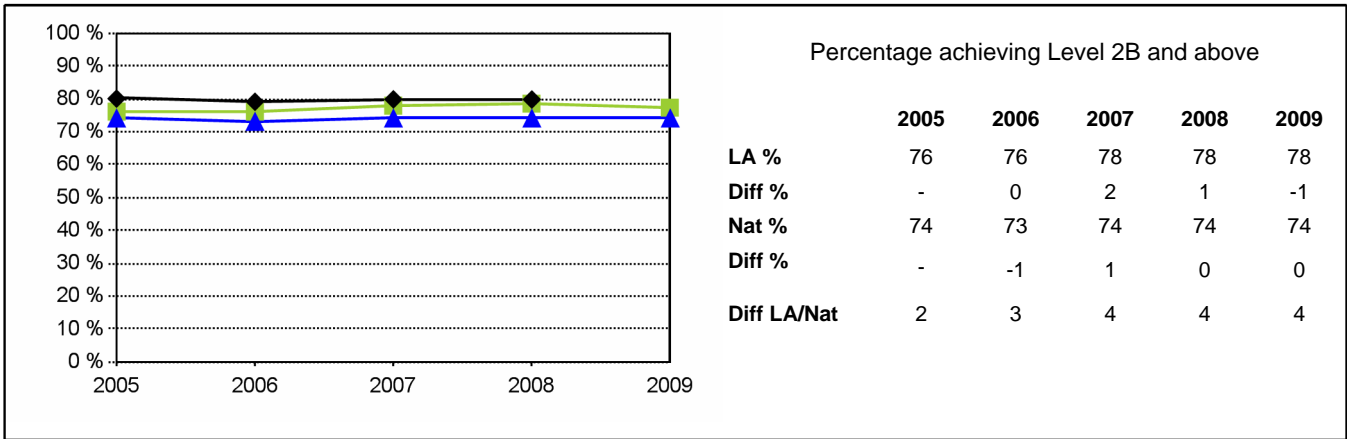
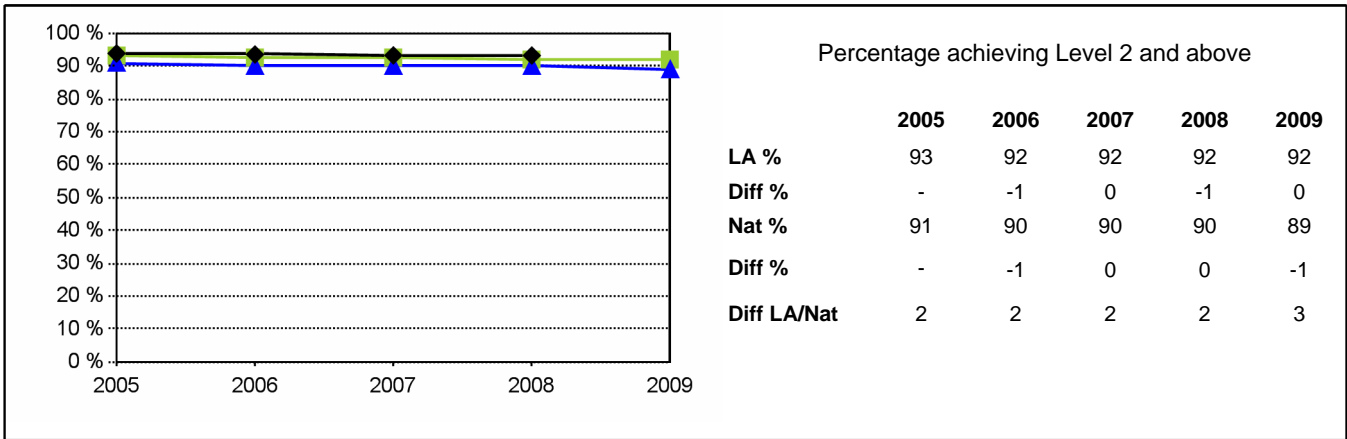


All attainment figures for Key Stage One include data from all schools with eligible Year 2 pupils, including special schools

National figures are based on the information published within the SFR 21/2009 National Curriculum Assessments at Key Stage 1 in England, 2009

Key Stage One Results 2005 - 2009: Mathematics

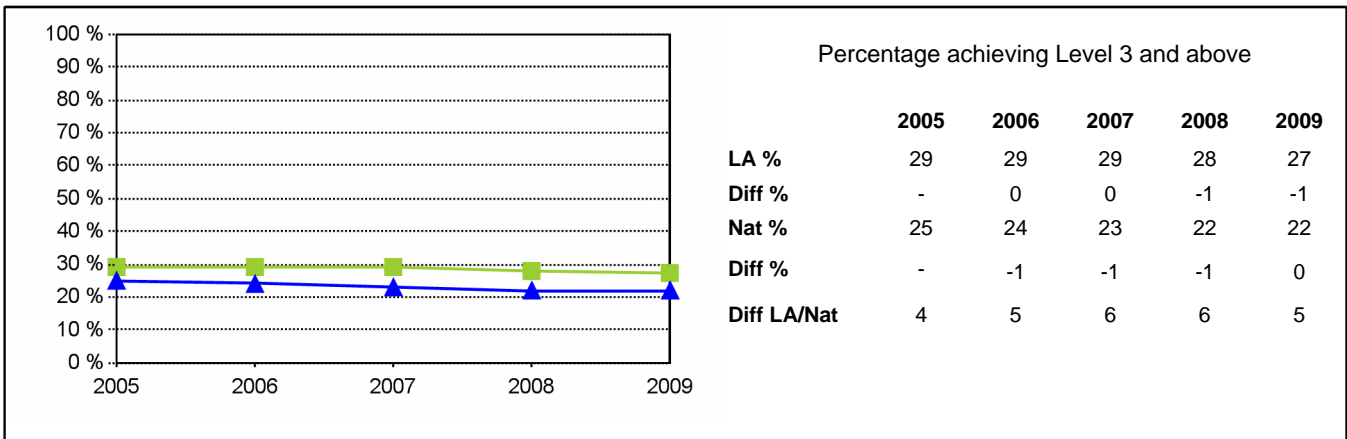
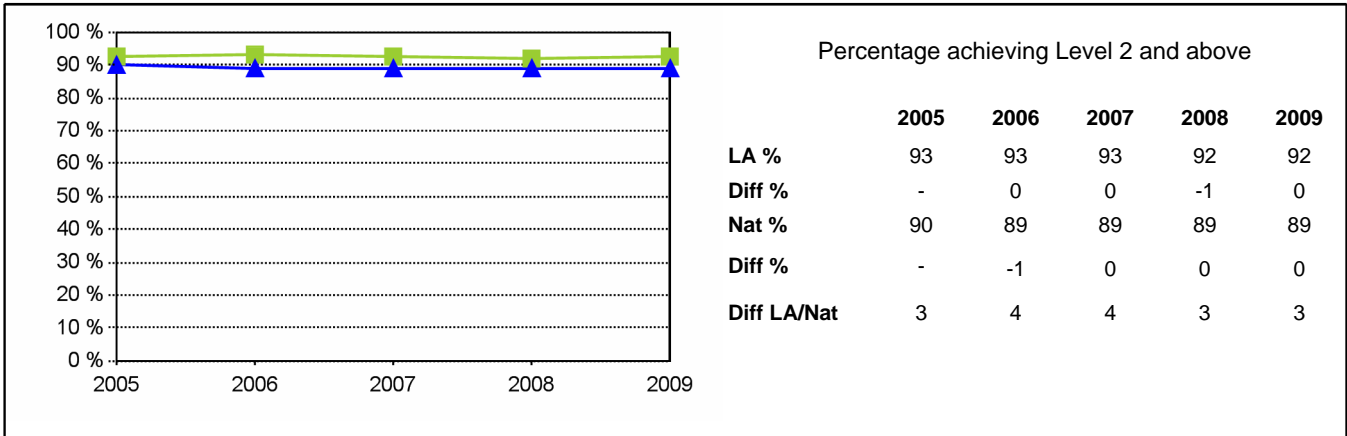
855 Leicestershire



All attainment figures for Key Stage One include data from all schools with eligible Year 2 pupils, including special schools and the PRU
 National figures are based on the information published within the SFR 21/2009 National Curriculum Assessments at Key Stage 1 in England, 2009

Key Stage One Results 2005 - 2009: Science

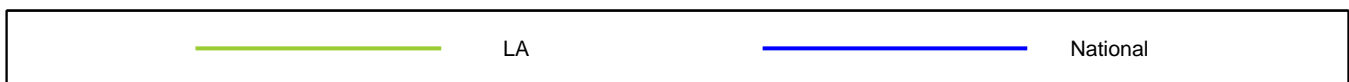
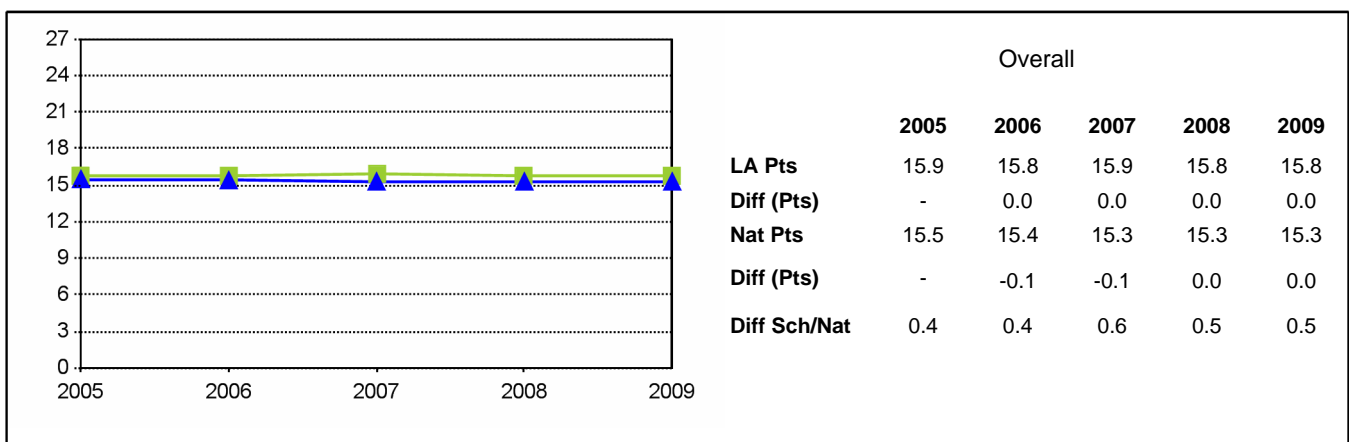
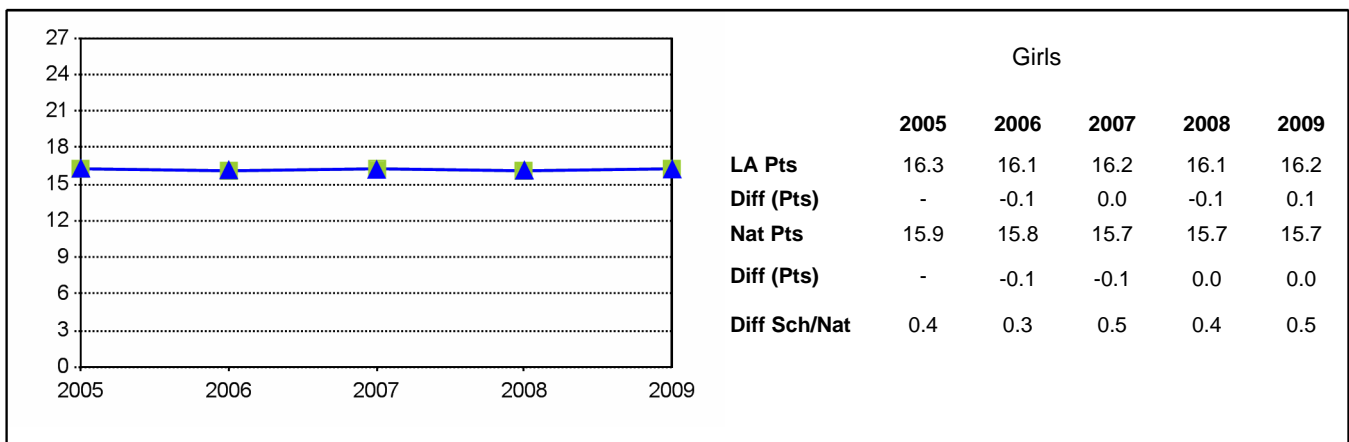
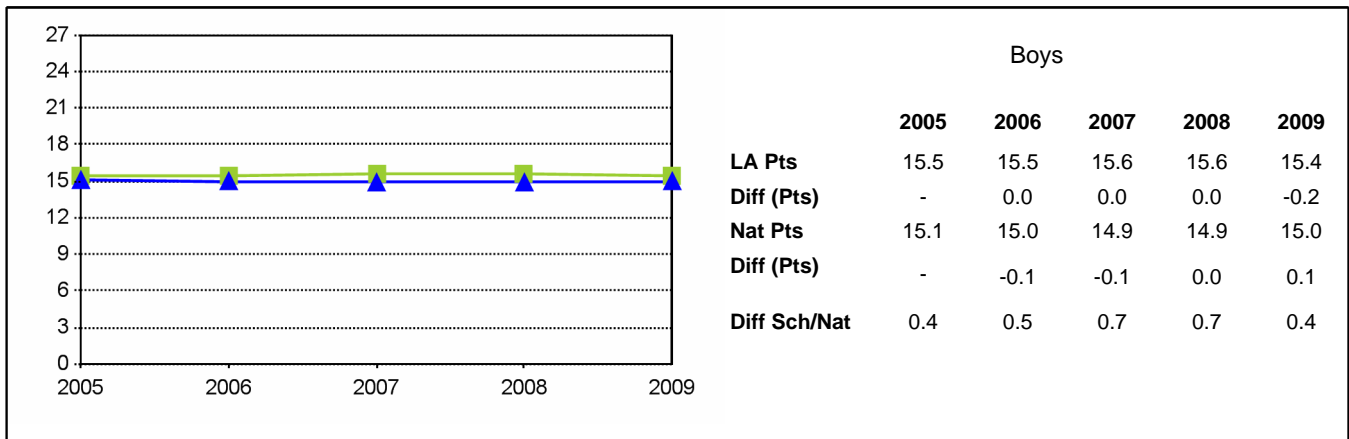
855 Leicestershire



All attainment figures for Key Stage One include data from all schools with eligible Year 2 pupils, including special schools and the PRU
 National figures are based on the information published within the SFR 21/2009 National Curriculum Assessments at Key Stage 1 in England, 2009

Key Stage One Results 2005 - 2009: Average Point Score

855 Leicestershire



All attainment figures for Key Stage One include data from all schools with eligible Year 2 pupils, including special schools

National figures are based on the information published within the SFR 21/2009 National Curriculum Assessments at Key Stage 1 in England, 2009

Key Stage One Results 2005 - 2009 Gender Analysis: Reading and Writing

855 Leicestershire

Reading

Boys

Level	LA					National				
	2005	2006	2007	2008	2009	2005	2006	2007	2008	2009
2+	84 %	84 %	84 %	84 %	83 %	81 %	80 %	80 %	80 %	81 %
2B+	70 %	70 %	70 %	71 %	69 %	67 %	66 %	66 %	66 %	67 %
3+	23 %	24 %	25 %	25 %	24 %	22 %	21 %	22 %	21 %	22 %

Girls

Level	LA					National				
	2005	2006	2007	2008	2009	2005	2006	2007	2008	2009
2+	92 %	92 %	90 %	91 %	91 %	89 %	89 %	88 %	88 %	89 %
2B+	82 %	82 %	81 %	81 %	81 %	78 %	77 %	77 %	77 %	77 %
3+	35 %	34 %	34 %	34 %	36 %	32 %	30 %	30 %	29 %	30 %

Gender Gap

Level	LA					National				
	2005	2006	2007	2008	2009	2005	2006	2007	2008	2009
2+	-8 %	-8 %	-7 %	-7 %	-8 %	-8 %	-9 %	-8 %	-8 %	-8 %
2B+	-11 %	-12 %	-10 %	-10 %	-11 %	-11 %	-11 %	-11 %	-11 %	-10 %
3+	-12 %	-10 %	-9 %	-8 %	-12 %	-10 %	-9 %	-8 %	-8 %	-8 %

Writing

Boys

Level	LA					National				
	2005	2006	2007	2008	2009	2005	2006	2007	2008	2009
2+	81 %	80 %	80 %	81 %	79 %	77 %	76 %	75 %	75 %	75 %
2B+	57 %	57 %	57 %	57 %	56 %	54 %	52 %	51 %	51 %	52 %
3+	10 %	11 %	11 %	11 %	10 %	10 %	9 %	11 %	8 %	9 %

Girls

Level	LA					National				
	2005	2006	2007	2008	2009	2005	2006	2007	2008	2009
2+	91 %	91 %	90 %	89 %	91 %	88 %	87 %	86 %	86 %	87 %
2B+	75 %	73 %	72 %	72 %	74 %	70 %	69 %	67 %	67 %	68 %
3+	23 %	21 %	21 %	19 %	20 %	20 %	19 %	17 %	16 %	16 %

Gender Gap

Level	LA					National				
	2005	2006	2007	2008	2009	2005	2006	2007	2008	2009
2+	-10 %	-10 %	-10 %	-9 %	-12 %	-11 %	-11 %	-11 %	-11 %	-12 %
2B+	-18 %	-16 %	-15 %	-15 %	-18 %	-16 %	-17 %	-16 %	-16 %	-16 %
3+	-13 %	-9 %	-10 %	-8 %	-10 %	-10 %	-10 %	-8 %	-8 %	-7 %



Gender gap less than national gender gap



Gender gap greater than national gender gap

All attainment figures for Key Stage One include data from all schools with eligible Year 2 pupils, including special schools

National figures are based on the information published within the SFR 21/2009 National Curriculum Assessments at Key Stage 1 in England, 2009

Gender gap is the difference between boys' attainment compared to girls' attainment

Key Stage One Results 2005 - 2009 Gender Analysis: Mathematics

855 Leicestershire

Mathematics

Boys

Level	LA					National				
	2005	2006	2007	2008	2009	2005	2006	2007	2008	2009
2+	92 %	92 %	92 %	92 %	90 %	90 %	89 %	88 %	88 %	88 %
2B+	75 %	76 %	77 %	78 %	76 %	75 %	76 %	77 %	78 %	72 %
3+	27 %	27 %	29 %	30 %	28 %	25 %	24 %	24 %	24 %	23 %

Girls

Level	LA					National				
	2005	2006	2007	2008	2009	2005	2006	2007	2008	2009
2+	94 %	93 %	93 %	93 %	93 %	92 %	92 %	91 %	91 %	91 %
2B+	77 %	77 %	79 %	79 %	79 %	75 %	74 %	75 %	75 %	75 %
3+	23 %	20 %	23 %	22 %	22 %	20 %	19 %	20 %	19 %	19 %

Gender Gap

Level	LA					National				
	2005	2006	2007	2008	2009	2005	2006	2007	2008	2009
2+	-2 %	-2 %	-2 %	-3 %	-3 %	-2 %	-3 %	-3 %	-3 %	-3 %
2B+	-2 %	-1 %	-2 %	-1 %	-3 %	-2 %	-1 %	-2 %	-1 %	-3 %
3+	4 %	7 %	6 %	8 %	7 %	5 %	5 %	4 %	5 %	4 %



Gender gap less than national gender gap



Gender gap greater than national gender gap

All attainment figures for Key Stage One include data from all schools with eligible Year 2 pupils, including special schools

National figures are based on the information published within the SFR 21/2009 National Curriculum Assessments at Key Stage 1 in England, 2009

Gender gap is the difference between boys' attainment compared to girls' attainment

Key Stage One Results 2005 - 2009 Gender Analysis: Speaking & Listening and Science

855 Leicestershire

Speaking & Listening

Boys

Level	LA					National				
	2005	2006	2007	2008	2009	2005	2006	2007	2008	2009
2+	87 %	88 %	88 %	88 %	87 %	85 %	84 %	84 %	83 %	84 %
3+	19 %	21 %	20 %	21 %	20 %	19 %	19 %	18 %	18 %	18 %

Girls

Level	LA					National				
	2005	2006	2007	2008	2009	2005	2006	2007	2008	2009
2+	94 %	93 %	93 %	93 %	94 %	91 %	90 %	90 %	90 %	90 %
3+	30 %	28 %	28 %	27 %	30 %	27 %	26 %	26 %	25 %	25 %

Gender Gap

Level	LA					National				
	2005	2006	2007	2008	2009	2005	2006	2007	2008	2009
2+	-6 %	-4 %	-5 %	-6 %	-7 %	-6 %	-6 %	-6 %	-7 %	-6 %
3+	-10 %	-7 %	-8 %	-6 %	-10 %	-8 %	-7 %	-8 %	-7 %	-7 %

Science

Boys

Level	LA					National				
	2005	2006	2007	2008	2009	2005	2006	2007	2008	2009
2+	91 %	92 %	92 %	91 %	91 %	88 %	88 %	87 %	87 %	87 %
3+	30 %	31 %	30 %	30 %	28 %	26 %	25 %	24 %	23 %	23 %

Girls

Level	LA					National				
	2005	2006	2007	2008	2009	2005	2006	2007	2008	2009
2+	94 %	94 %	94 %	93 %	94 %	91 %	91 %	90 %	90 %	91 %
3+	28 %	27 %	28 %	26 %	26 %	24 %	23 %	22 %	21 %	21 %

Gender Gap

Level	LA					National				
	2005	2006	2007	2008	2009	2005	2006	2007	2008	2009
2+	-2 %	-1 %	-1 %	-2 %	-2 %	-3 %	-3 %	-3 %	-3 %	-4 %
3+	1 %	4 %	3 %	4 %	2 %	2 %	2 %	2 %	2 %	2 %



Gender gap less than national gender gap



Gender gap greater than national gender gap

All attainment figures for Key Stage One include data from all schools with eligible Year 2 pupils, including special schools

National figures are based on the information published within the SFR 21/2009 National Curriculum Assessments at Key Stage 1 in England, 2009

Gender gap is the difference between boys' attainment compared to girls' attainment

Key Stage One Results 2005 - 2009 Ethnicity Analysis: Reading

855 Leicestershire

Percentage achieving Level 2+

Ethnicity	LA					National				
	2005	2006	2007	2008	2009	2005	2006	2007	2008	2009
White British	88 %	88 %	87 %	88 %	87 %	86 %	86 %	85 %	85 %	-
Irish	100 %	100 %	90 %	100 %	80 %	86 %	85 %	84 %	86 %	-
Irish Traveller	33 %	30 %	0 %	13 %	50 %	32 %	30 %	33 %	32 %	-
Gypsy/Roma	100 %	38 %	42 %	43 %	27 %	42 %	40 %	38 %	37 %	-
Other White background	91 %	82 %	79 %	78 %	84 %	80 %	78 %	75 %	75 %	-
Total White	88 %	87 %	87 %	87 %	86 %	86 %	85 %	85 %	84 %	-
White and Black Caribbean	93 %	90 %	87 %	85 %	90 %	82 %	82 %	81 %	82 %	-
White and Black African	86 %	100 %	100 %	100 %	70 %	84 %	84 %	83 %	83 %	-
White and Asian	95 %	93 %	93 %	95 %	93 %	90 %	88 %	88 %	88 %	-
Other Mixed background	95 %	92 %	93 %	81 %	91 %	86 %	85 %	84 %	85 %	-
Total Mixed	94 %	93 %	92 %	88 %	89 %	85 %	85 %	84 %	84 %	-
Indian	91 %	94 %	93 %	93 %	96 %	88 %	89 %	88 %	89 %	-
Pakistani	88 %	90 %	88 %	71 %	88 %	77 %	77 %	77 %	77 %	-
Bangladeshi	86 %	82 %	76 %	88 %	75 %	78 %	78 %	79 %	81 %	-
Any other Asian background	83 %	72 %	80 %	77 %	85 %	85 %	84 %	84 %	84 %	-
Total Asian	90 %	90 %	90 %	90 %	92 %	81 %	81 %	81 %	82 %	-
Black Caribbean	100 %	100 %	100 %	100 %	88 %	81 %	80 %	81 %	80 %	-
Black African	64 %	82 %	88 %	85 %	63 %	78 %	78 %	79 %	81 %	-
Any other Black background	100 %	75 %	100 %	67 %	40 %	80 %	80 %	79 %	80 %	-
Total Black	82 %	85 %	93 %	87 %	66 %	79 %	79 %	79 %	80 %	-
Chinese	88 %	95 %	94 %	95 %	88 %	90 %	90 %	88 %	89 %	-
Any other ethnic group	65 %	83 %	78 %	85 %	88 %	76 %	74 %	75 %	76 %	-
Unclassified	80 %	85 %	83 %	81 %	77 %	80 %	71 %	70 %	68 %	-
All Pupils	88 %	88 %	87 %	87 %	87 %	85 %	84 %	84 %	84 %	84 %

Differences ■ Performance greater than the national average for the ethnic group ■ Performance less than the national average for the ethnic group

Ethnicity	LA vs. National				
	2005	2006	2007	2008	2009
White British	2 %	2 %	2 %	3 %	-
Irish	14 %	15 %	6 %	14 %	-
Irish Traveller	1 %	0 %	-33 %	-20 %	-
Gypsy/Roma	58 %	-3 %	4 %	6 %	-
Other White background	11 %	4 %	4 %	3 %	-
Total White	2 %	2 %	2 %	3 %	-
White and Black Caribbean	11 %	8 %	6 %	3 %	-
White and Black African	2 %	16 %	17 %	17 %	-
White and Asian	5 %	5 %	5 %	7 %	-
Other Mixed background	9 %	7 %	9 %	-4 %	-
Total Mixed	9 %	8 %	8 %	4 %	-
Indian	3 %	5 %	5 %	4 %	-
Pakistani	11 %	13 %	11 %	-6 %	-
Bangladeshi	8 %	4 %	-3 %	7 %	-
Any other Asian background	-2 %	-12 %	-4 %	-7 %	-
Total Asian	9 %	9 %	9 %	8 %	-
Black Caribbean	19 %	20 %	19 %	20 %	-
Black African	-14 %	4 %	9 %	4 %	-
Any other Black background	20 %	-5 %	21 %	-13 %	-
Total Black	3 %	6 %	14 %	7 %	-
Chinese	-2 %	5 %	6 %	6 %	-
Any other ethnic group	-11 %	9 %	3 %	9 %	-
Unclassified	0 %	14 %	13 %	13 %	-
All Pupils	3 %	4 %	3 %	3 %	3 %

■ Attainment greater than the comparator figure
■ Attainment less than the comparator figure

All attainment figures for Key Stage One include data from all schools with eligible Year 2 pupils, including special schools

National figures are based on the information published within the SFR 21/2009 National Curriculum Assessments at Key Stage 1 in England, 2009

Key Stage One Results 2005 - 2009 Ethnicity Analysis: Writing

855 Leicestershire

Percentage achieving Level 2+

Ethnicity	LA					National				
	2005	2006	2007	2008	2009	2005	2006	2007	2008	2009
White British	86 %	85 %	85 %	85 %	85 %	84 %	83 %	82 %	81 %	-
Irish	100 %	100 %	80 %	100 %	90 %	84 %	82 %	81 %	81 %	-
Irish Traveller	0 %	30 %	0 %	25 %	50 %	30 %	30 %	30 %	28 %	-
Gypsy/Roma	100 %	38 %	33 %	36 %	27 %	40 %	36 %	36 %	34 %	-
Other White background	86 %	79 %	79 %	72 %	77 %	78 %	75 %	72 %	71 %	-
Total White	86 %	85 %	85 %	85 %	84 %	83 %	82 %	81 %	81 %	-
White and Black Caribbean	88 %	88 %	85 %	76 %	90 %	78 %	79 %	78 %	77 %	-
White and Black African	86 %	86 %	100 %	100 %	75 %	82 %	81 %	80 %	79 %	-
White and Asian	87 %	89 %	92 %	95 %	86 %	87 %	86 %	86 %	85 %	-
Other Mixed background	88 %	94 %	88 %	79 %	89 %	83 %	82 %	81 %	81 %	-
Total Mixed	87 %	90 %	89 %	85 %	87 %	82 %	82 %	81 %	81 %	-
Indian	89 %	93 %	91 %	91 %	94 %	86 %	86 %	85 %	86 %	-
Pakistani	83 %	90 %	88 %	71 %	81 %	73 %	73 %	72 %	72 %	-
Bangladeshi	81 %	76 %	68 %	88 %	70 %	75 %	75 %	77 %	77 %	-
Any other Asian background	80 %	72 %	80 %	71 %	76 %	82 %	81 %	81 %	80 %	-
Total Asian	87 %	89 %	88 %	88 %	89 %	78 %	78 %	78 %	78 %	-
Black Caribbean	100 %	100 %	100 %	100 %	88 %	76 %	76 %	75 %	74 %	-
Black African	64 %	88 %	88 %	85 %	68 %	73 %	74 %	74 %	75 %	-
Any other Black background	100 %	75 %	100 %	67 %	40 %	76 %	75 %	74 %	74 %	-
Total Black	82 %	88 %	93 %	87 %	69 %	75 %	75 %	74 %	75 %	-
Chinese	82 %	95 %	94 %	86 %	84 %	88 %	87 %	86 %	87 %	-
Any other ethnic group	65 %	75 %	78 %	78 %	92 %	73 %	71 %	71 %	72 %	-
Unclassified	77 %	73 %	78 %	81 %	83 %	78 %	57 %	66 %	64 %	-
All Pupils	86 %	85 %	85 %	85 %	85 %	82 %	81 %	80 %	80 %	81 %

Differences



Performance greater than the national average for the ethnic group



Performance less than the national average for the ethnic group

Ethnicity	LA vs. National				
	2005	2006	2007	2008	2009
White British	2 %	2 %	3 %	4 %	-
Irish	16 %	18 %	-1 %	19 %	-
Irish Traveller	-30 %	0 %	-30 %	-3 %	-
Gypsy/Roma	60 %	2 %	-3 %	2 %	-
Other White background	8 %	4 %	7 %	1 %	-
Total White	3 %	3 %	4 %	4 %	-
White and Black Caribbean	10 %	9 %	7 %	-1 %	-
White and Black African	4 %	5 %	20 %	21 %	-
White and Asian	0 %	3 %	6 %	10 %	-
Other Mixed background	5 %	12 %	6 %	-2 %	-
Total Mixed	5 %	8 %	8 %	4 %	-
Indian	3 %	7 %	6 %	5 %	-
Pakistani	10 %	17 %	16 %	-1 %	-
Bangladeshi	6 %	1 %	-9 %	11 %	-
Any other Asian background	-2 %	-9 %	-1 %	-9 %	-
Total Asian	9 %	11 %	10 %	10 %	-
Black Caribbean	24 %	24 %	25 %	26 %	-
Black African	-9 %	14 %	14 %	10 %	-
Any other Black background	24 %	0 %	26 %	-7 %	-
Total Black	7 %	13 %	19 %	12 %	-
Chinese	-6 %	8 %	8 %	-1 %	-
Any other ethnic group	-8 %	4 %	7 %	6 %	-
Unclassified	-1 %	16 %	12 %	17 %	-
All Pupils	4 %	4 %	5 %	5 %	4 %



Attainment greater than the comparator figure



Attainment less than the comparator figure

All attainment figures for Key Stage One include data from all schools with eligible Year 2 pupils including, special schools



National figures are based on the information published within the SFR 21/2009 National Curriculum Assessments at Key Stage 1 in England, 2009

Key Stage One Results 2005 - 2009 Ethnicity Analysis: Mathematics



855 Leicestershire

Percentage achieving Level 2+

Ethnicity	LA					National				
	2005	2006	2007	2008	2009	2005	2006	2007	2008	2009
White British	93 %	93 %	93 %	92 %	92 %	92 %	91 %	91 %	91 %	-
Irish	100 %	93 %	90 %	100 %	90 %	92 %	91 %	90 %	91 %	-
Irish Traveller	33 %	30 %	0 %	25 %	50 %	52 %	50 %	52 %	52 %	-
Gypsy/Roma	100 %	75 %	42 %	57 %	36 %	62 %	60 %	56 %	57 %	-
Other White background	97 %	92 %	87 %	86 %	90 %	89 %	88 %	86 %	86 %	-
Total White	93 %	92 %	92 %	92 %	92 %	92 %	91 %	91 %	90 %	-
White and Black Caribbean	95 %	87 %	96 %	88 %	98 %	89 %	88 %	89 %	88 %	-
White and Black African	100 %	100 %	100 %	100 %	95 %	89 %	90 %	89 %	89 %	-
White and Asian	96 %	99 %	98 %	97 %	92 %	94 %	93 %	93 %	92 %	-
Other Mixed background	95 %	92 %	95 %	90 %	92 %	91 %	90 %	90 %	90 %	-
Total Mixed	96 %	94 %	97 %	92 %	94 %	91 %	90 %	90 %	90 %	-
Indian	94 %	96 %	96 %	93 %	95 %	92 %	92 %	92 %	92 %	-
Pakistani	92 %	95 %	92 %	76 %	94 %	84 %	83 %	83 %	82 %	-
Bangladeshi	95 %	88 %	76 %	88 %	85 %	86 %	84 %	86 %	86 %	-
Any other Asian background	90 %	86 %	92 %	94 %	88 %	91 %	90 %	90 %	90 %	-
Total Asian	94 %	94 %	93 %	92 %	93 %	87 %	86 %	87 %	86 %	-
Black Caribbean	100 %	100 %	100 %	100 %	100 %	86 %	86 %	85 %	85 %	-
Black African	64 %	82 %	94 %	85 %	74 %	83 %	84 %	84 %	85 %	-
Any other Black background	100 %	100 %	100 %	100 %	80 %	86 %	85 %	85 %	85 %	-
Total Black	82 %	88 %	97 %	91 %	81 %	85 %	84 %	84 %	85 %	-
Chinese	97 %	100 %	94 %	100 %	96 %	96 %	96 %	95 %	95 %	-
Any other ethnic group	90 %	88 %	81 %	89 %	92 %	87 %	84 %	84 %	84 %	-
Unclassified	91 %	79 %	85 %	83 %	88 %	87 %	80 %	79 %	76 %	-
All Pupils	93 %	92 %	92 %	92 %	92 %	91 %	90 %	90 %	90 %	89 %

Differences  Performance greater than the national average for the ethnic group  Performance less than the national average for the ethnic group

Ethnicity	LA vs. National				
	2005	2006	2007	2008	2009
White British	1 %	2 %	2 %	1 %	-
Irish	8 %	2 %	0 %	9 %	-
Irish Traveller	-19 %	-20 %	-52 %	-27 %	-
Gypsy/Roma	38 %	15 %	-14 %	0 %	-
Other White background	8 %	4 %	1 %	0 %	-
Total White	1 %	1 %	1 %	2 %	-
White and Black Caribbean	6 %	-1 %	7 %	0 %	-
White and Black African	11 %	10 %	11 %	11 %	-
White and Asian	2 %	6 %	5 %	5 %	-
Other Mixed background	4 %	2 %	5 %	0 %	-
Total Mixed	5 %	4 %	7 %	2 %	-
Indian	2 %	4 %	4 %	1 %	-
Pakistani	8 %	12 %	9 %	-6 %	-
Bangladeshi	9 %	4 %	-10 %	2 %	-
Any other Asian background	-1 %	-4 %	2 %	4 %	-
Total Asian	7 %	8 %	6 %	6 %	-
Black Caribbean	14 %	14 %	15 %	15 %	-
Black African	-19 %	-2 %	10 %	0 %	-
Any other Black background	14 %	15 %	15 %	15 %	-
Total Black	-3 %	4 %	13 %	6 %	-
Chinese	1 %	4 %	-1 %	5 %	-
Any other ethnic group	3 %	4 %	-3 %	5 %	-
Unclassified	4 %	-1 %	6 %	7 %	-
All Pupils	2 %	2 %	2 %	2 %	3 %

 Attainment greater than the comparator figure
 Attainment less than the comparator figure

All attainment figures for Key Stage One include data from all schools with eligible Year 2 pupils, including special schools

National figures are based on the information published within the SFR 21/2009 National Curriculum Assessments at Key Stage 1 in England, 2009