

**Key Stage
Two
Officer Pack
2006**

KEY STAGE 2 GRAPH PACK

Background

This report provides an overview of school level, local authority and national Key Stage 2 attainment data. The purpose of the report is to provide basic attainment comparisons between the local and national situation and to include further analysis of attainment by gender and ethnicity.

The Key Stage 2 Graph Pack includes the following contents:

- Breakdown of 2006 KS2 attainment
- Headline contextual data for the 2006 cohort
- English Test Attainment and Teacher Assessment 4+ and 5+ 2002 to 2006
- Reading and Writing Test Attainment 4+ and 5+ 2002 to 2006
- Maths Test Attainment and Teacher Assessment 4+ and 5+ 2002 to 2006
- Science Test Attainment and Teacher Assessment 4+ and 5+ 2002 to 2006
- KS2 Average Point Scores by Gender 2002 to 2006
- Gender Analysis 4+, 5+ and APS 2002 to 2006 for English, Maths, Science, Reading and Writing
- Ethnicity Analysis 4+ 2002 to 2006 for English, Maths and Science
- FFT Type 'A'/'D', Statutory Targets and Actual Attainment comparisons for English and Maths for 4+ and 5+

Technical details

1. Key Stage 2 attainment data is supplied to the LA by the DfES, the latest data supplied was made available 16th August 2006. All the School level and Local Authority data is derived from this data set. To allow analysis based on ethnicity the most recently available School Census data has been matched into the data set. The data for 2006 at this stage of the academic year is classified as provisional.
2. The source of the National data for 2006 is the DfES Statistical First Release SFR 31/2006 National Curriculum Assessments at Key Stage 2 in England, 2006 (Provisional). All historic national data has been obtained from a variety of DfES attainment sources.
3. Included in the Graph Pack for the first time are sections on gender and ethnicity analysis. For gender analysis purposes we have highlighted where the gender gap is larger than the national average and for ethnic analysis purposes we have highlighted where headline performance is greater than or less than average national or local performance. No degree of significance is placed on the differences highlighted.
4. Also included in the analysis are FFT (Fischer Family Trust) Key Stage 2 Type 'A' and 'D' Estimates for 2002 to 2006 based on Key Stage 1 prior attainment (both test and teacher assessment data). FFT Type 'A' estimates are based on historical progress made by students nationally between Key Stage 1 and Key Stage 2, and Type 'D' estimates provide an indication of achievement that would be consistent with the progress made by students in schools with the highest value-added (top 25% of schools nationally) between Key Stage 1 and Key Stage 2.
5. LA Teacher Assessment data is only 92% complete as not all schools submitted their 2005/06 data to the NAA.

Enquiries

Please contact the following people listed below if you wish to make any comments regarding this report or if you have any queries regarding the analysis.

As this analysis is very much developmental we would welcome any comments so that the product can improve and evolve.

Report contacts:

<p>Richard Gretton Statistics Manager Statistics and Information, MIS Unit Children & Young People's Service Leicestershire County Council</p> <p>Tel No: 0116 265 6638 E-Mail: rgretton@leics.gov.uk</p>	<p>Lea Parsons Senior Analyst Statistics and Information, MIS Unit Children & Young People's Service Leicestershire County Council</p> <p>Tel No: 0116 265 6481 E-Mail: lparsons@leics.gov.uk</p>
<p>Pam Hatfield Lead Consultant - Assessment & AFL School Improvement & Performance Service Children & Young People's Service Leicestershire County Council</p> <p>Tel No: 0116 265 6329 E-Mail: phatfield@leics.gov.uk</p>	<p>Lynda Smith School Development Adviser School Improvement & Performance Service Children & Young People's Service Leicestershire County Council</p> <p>Tel No: 0116 265 6420 E-Mail: lysmith@leics.gov.uk</p>

Headline commentary:

From 2005 National Key Stage 2 attainment levels at 4+ have shown little improvement, English remains the same at 79%, Maths and Science have increased by 1% each to stand at 76% and 87%. Leicestershire encouragingly produced a 2% rise in English to 82%, 2% rise in Science to 89% and 1% rise in Maths to 76%. Attainment at 5+ has shown at both a local and national level a far larger increase compared to 4+ with Leicestershire outperforming the national improvement in all three core subjects.

Leicestershire's comparable performance against all local authorities shows an improvement of ranking at both 4+ and 5+, and Leicestershire is on the fringe of the top quartile for most measures. The performance of English and Science at 4+ is particularly strong and 5+ English, Maths and Science performance is improving. The 4+ performance outcomes of Maths have shown little improvement over the last 5 years and performance against comparable authorities and all LA's is disproportionate to English and Science.

Leicestershire's Key Stage 2 Performance (Rankings) against all LAs and Statistical Neighbour LAs (2006 data is provisional) (1 = highest ranked, 150 = lowest ranked)

		4+			5+			APS	VA	LAs
		English	Maths	Science	English	Maths	Science			
National	2006	26	61	21	41	40	52	42	-	150
Stat. N'bours	2006	2	7	3	3	5	6	4	-	11
National	2005	49	66	55	68	51	75	44	106	150
Stat. N'bours	2005	4	8	9	7	5	10	5	6	11
National	2004	34	43	15	52	43	58	46	88	150
Stat. N'bours	2004	2	4	1	6	4	9	4	4	11
National	2003	28	44	32	59	61	48	33	73	150
Stat. N'bours	2003	2	4	4	7	4	7	3	6	11
National	2002	31	41	23	36	33	56	-	-	150
Stat. N'bours	2002	2	2	2	3	2	7	-	-	11
National	2001	31	42	37	46	42	43	-	-	150
Stat. N'bours	2001	2	2	3	2	2	3	-	-	11

The attainment at both 5+ for both boys and girls has been encouraging across all the Key Stage 2 subjects. Boys' attainment at 4+ has shown positive improvement in all subjects apart from Reading, whilst girls' performances at 4+ have mirrored the national trend but with a strong improvement in Science.

Ethnic attainment analysis using the 2005 data highlights performance across the ethnic groups is variable for 4+ attainment for English, Maths and Science. English and Science performance is overall on par with the national picture but within these subjects the Asian and Mixed Ethnicity cohorts performance varies. In terms of English the Bangladeshi and Mixed White and Caribbean cohorts show the most noticeable differences in under achievement but the gap is narrowing year on year.

The whole of the Asian cohort under performs in Science, more significantly in terms of the Pakistani and Bangladeshi cohorts. Improvements over the last couple of years are not being observed, conversely these cohorts have showed a large decline. Performance in terms of Mathematics is overall favourable with only the Bangladeshi cohort showing significant under achievement which is declining over time.

In relation to FFT estimates Leicestershire in 2006 performed above/inline with FFT Type 'A' estimates at 5+ for the first time in the last five years for both English and Maths. The performance at 4+ was inline for English but under the estimate for Maths.

Subject commentary:

English

2006 saw a large rise in 5+ attainment (8% increase) which was mirrored nationally (5% increase) and good progress at 4+ (2% increase to 82%) against the national trend. Improvements at 4+ have been more apparent in terms of boys as national performance was the same as last year whereas in Leicestershire it increased by 2%. This has meant a narrowing of the gender gap in relation to the 4+ measure in Leicestershire. However the attainment gap continues to widen between girls and boys at 5+ both locally and nationally.

Against the 4+, 5+ and APS attainment measures both boys and girls in Leicestershire continue to outperform those nationally.

Reading

The attainment at 4+ declined at both a local and national level by 1% between 2005 and 2006, whereas 5+ attainment increased by 4% locally and 3% nationally. Overall there has been a rise in both boys and girls' attainment at 5+, but 4+ performance by boys has declined by 2% in Leicestershire and 3% in England.

The gender gap in favour of girls at both a local and national level continues to widen particularly at 5+, but boys and girls in Leicestershire continue to outperform the national performance levels for each gender.

Writing

The increase in both 4+ and 5+ attainment in Leicestershire this year mirrors the national picture. Attainment has shown a particular increase in terms of 4+ boys, 7% compared to 4% nationally. As a result the gender gap at 4+ has been narrowed by 3% compared to 1% nationally.

As with English and Reading Leicestershire boys and girls continue to outperform the national average when compared against all measures.

Mathematics

Improvements in Maths have followed national trends with 4+ attainment improving by 1% and 5+ attainment increasing by 3% in Leicestershire compared to 2% for England. The gender gap in performance is widening in favour of boys in terms of 4+ attainment locally and nationally, with Leicestershire boys further beating the national increase.

The attainment of Leicestershire girls at 4+ Maths is the only indicator in all of the core subjects (and extending to reading and writing) where performance is below the national average.

Science

Leicestershire generally bucked the national trend in terms of Science attainment in 2006 with a 2% rise in attainment at 4+ compared to a 1% national rise. At 5+ we produced a 1% rise compared to a 1% decline nationally. The improvement is focused in both boys and girls at Level 4+ and girls at Level 5+ and is resulting in Leicestershire pupils overall performing well above the national averages.

855 Leicestershire Summary

Percentage of 11 year olds in school: levels of attainment

Boys	Other	1	2	3	4	5	6	Level 4 & above	Level 5 & above
Reading Test	9	0	0	10	40	42	-	82%	42%
Writing Test	8	0	0	31	47	14	-	61%	14%
English Test	7	0	1	15	50	27	-	77%	27%
Teacher Assessment	0	1	5	20	52	23	0	74%	23%
Maths Test	5	0	1	16	41	36	-	78%	36%
Teacher Assessment	0	1	4	17	43	35	0	78%	35%
Science Test	3	0	0	9	41	47	-	88%	47%
Teacher Assessment	0	0	2	13	49	36	0	85%	36%

Girls	Other	1	2	3	4	5	6	Level 4 & above	Level 5 & above
Reading Test	5	0	0	7	34	54	-	88%	54%
Writing Test	4	0	0	20	52	24	-	76%	24%
English Test	3	0	0	10	46	40	-	86%	40%
Teacher Assessment	0	0	3	13	50	34	0	84%	34%
Maths Test	5	0	1	20	43	31	-	74%	31%
Teacher Assessment	0	0	4	19	47	30	0	77%	30%
Science Test	2	0	0	9	41	48	-	89%	48%
Teacher Assessment	0	0	1	13	51	34	0	85%	34%

Boys & Girls	Other	1	2	3	4	5	6	Level 4 & above	Level 5 & above
Reading Test	7	0	0	8	37	48	-	85%	48%
Writing Test	6	0	0	26	50	19	-	68%	19%
English Test	5	0	1	13	48	34	-	82%	34%
Teacher Assessment	0	0	4	16	51	28	0	79%	28%
Maths Test	5	0	1	18	42	34	-	76%	34%
Teacher Assessment	0	0	4	18	45	33	0	78%	33%
Science Test	2	0	0	9	41	47	-	89%	47%
Teacher Assessment	0	0	2	13	50	35	0	85%	35%

		Average Level	Average Point Score
Boys	English Test	4.5	26.9
	Mathematics Test	4.6	27.6
	Science Test	4.8	29.0
Girls	English Test	4.7	28.4
	Mathematics Test	4.5	27.1
	Science Test	4.8	29.1
Boys & Girls	English Test	4.6	27.7
	Mathematics Test	4.6	27.3
	Science Test	4.8	29.1

Notes

Data based on DfES datafeed 16 August 2006.

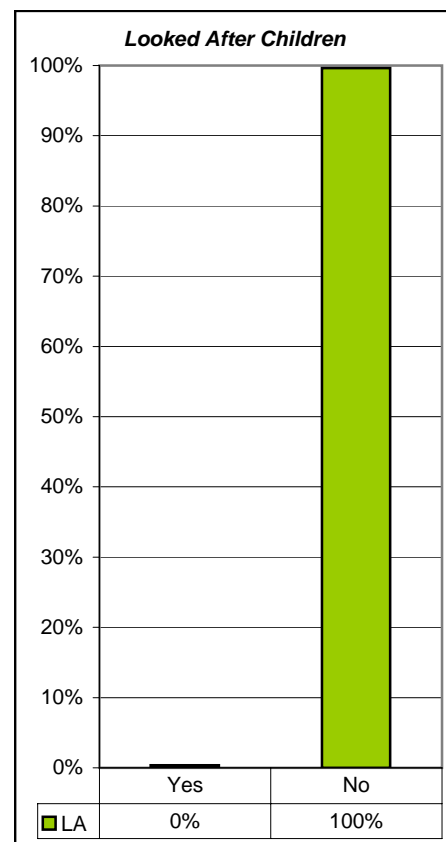
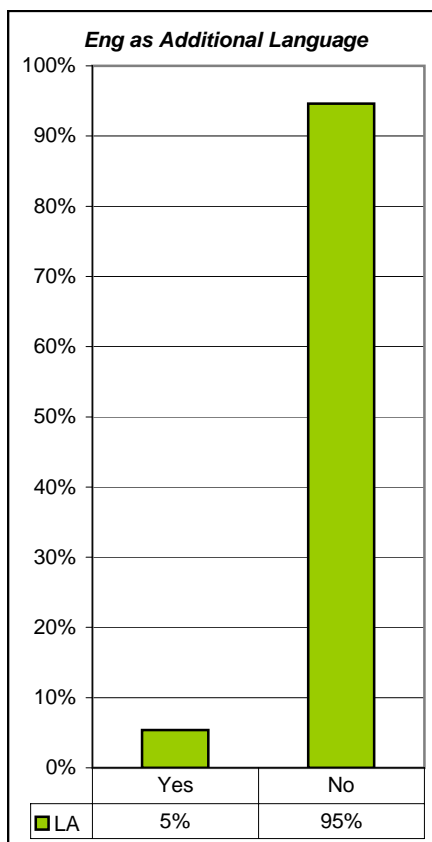
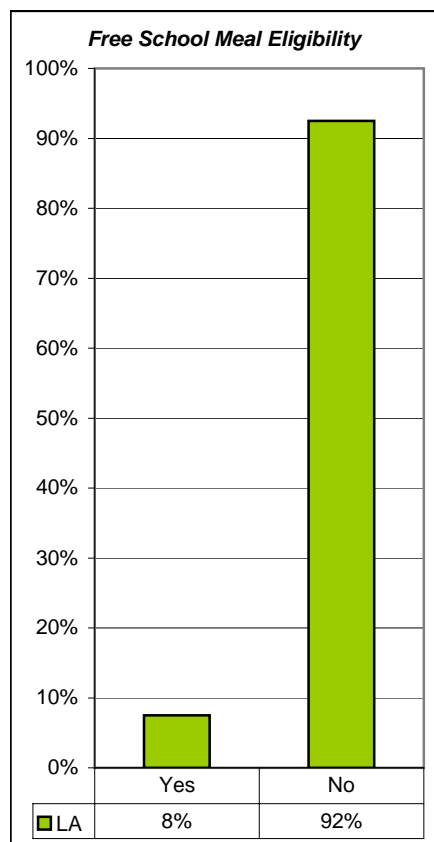
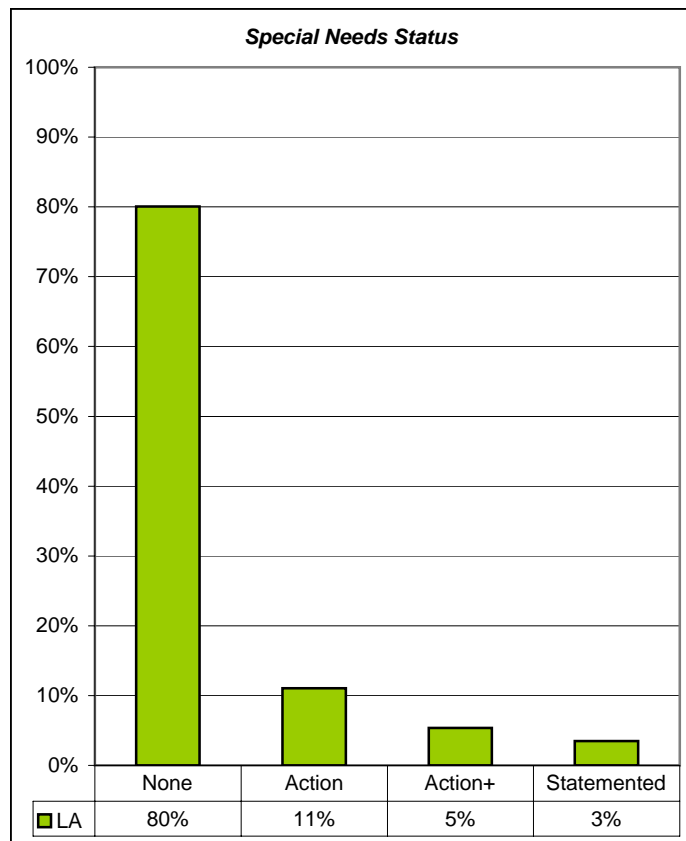
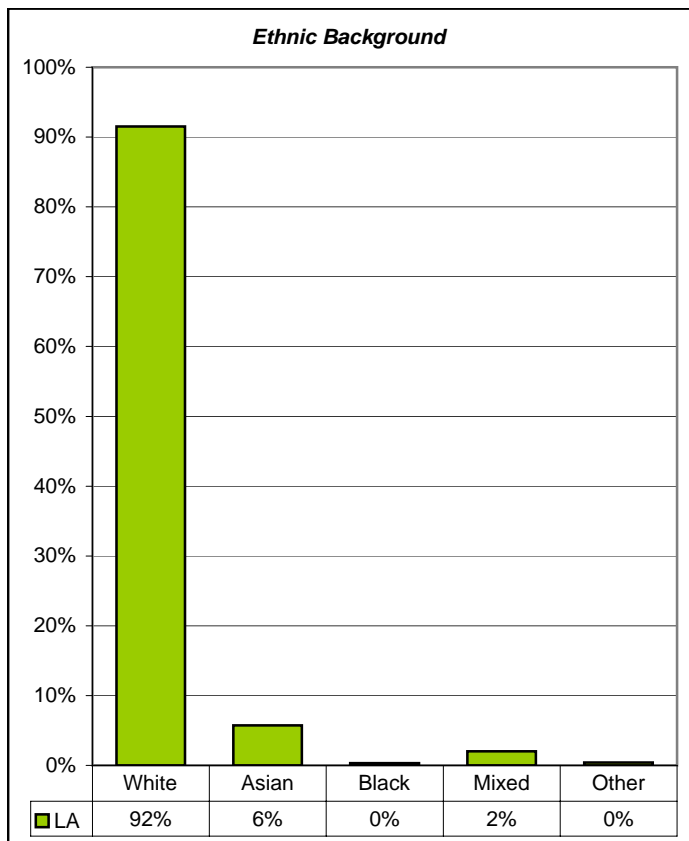
'Other' refers to pupils who were absent, disapplied, took the statutory tests but failed to register a level and those working at a level below that assessed by the tests.

Pupils achieving a grade "B" or "N" have been scored as gaining a Level 2 or 15 points.

Average Level reflects the true fine grading of point scores, e.g. 27 points represents Level 4.5 and 33 points represents Level 5.5 etc

Key Stage Two Results 2006: PLASC 2006 Contextual Data

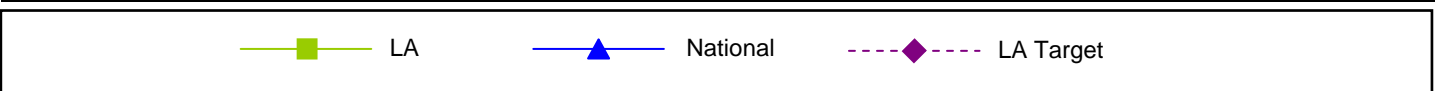
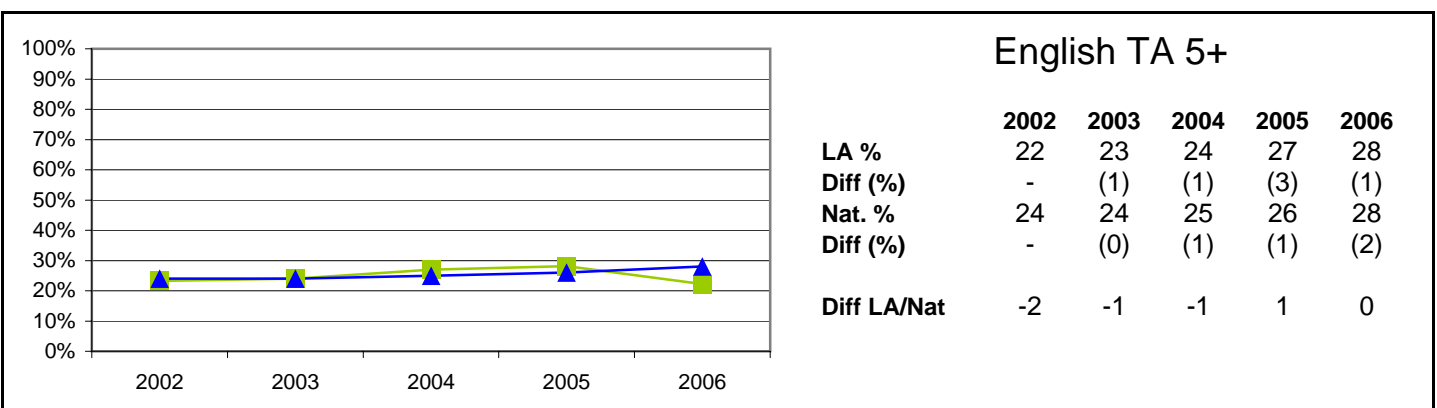
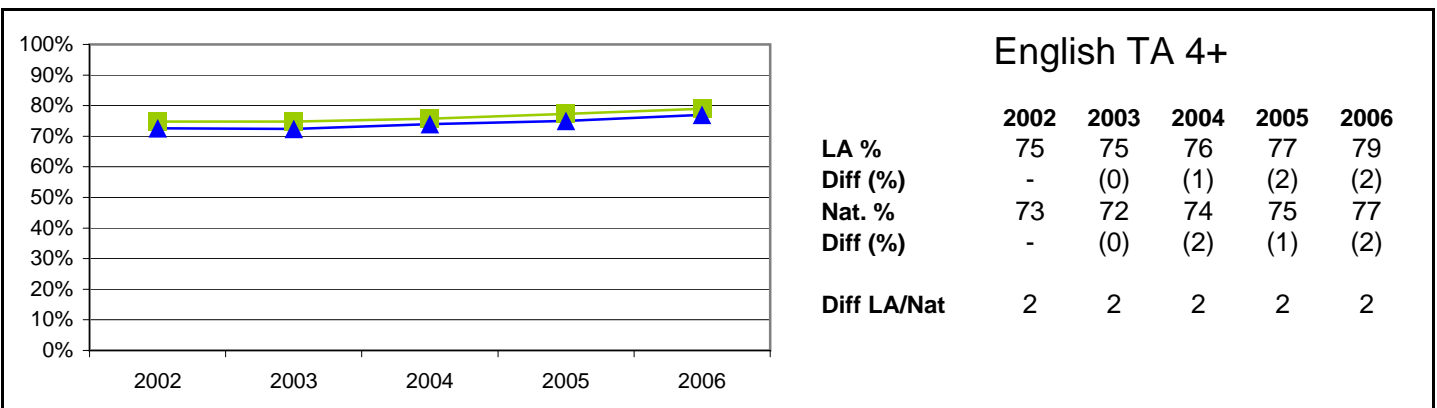
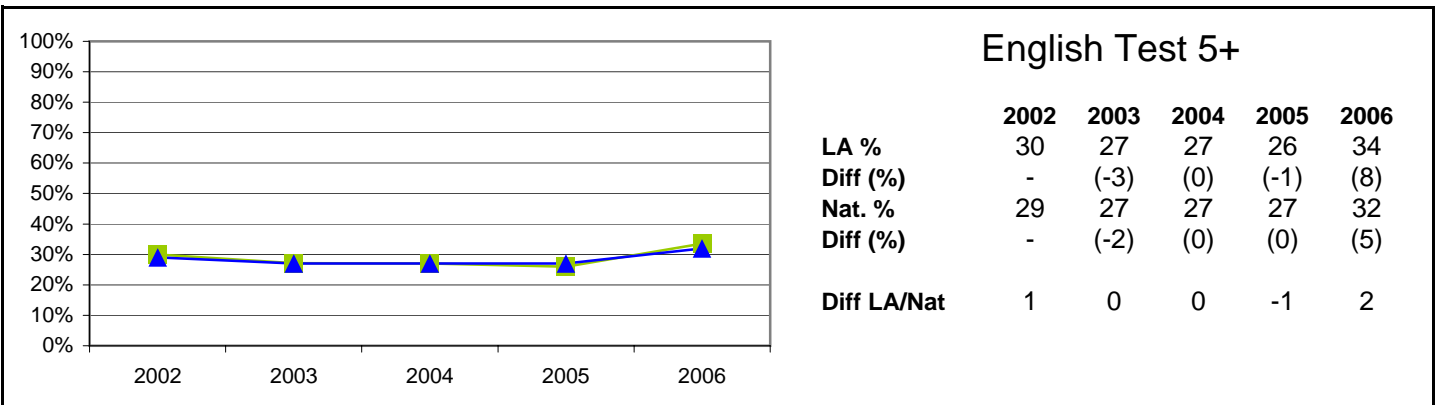
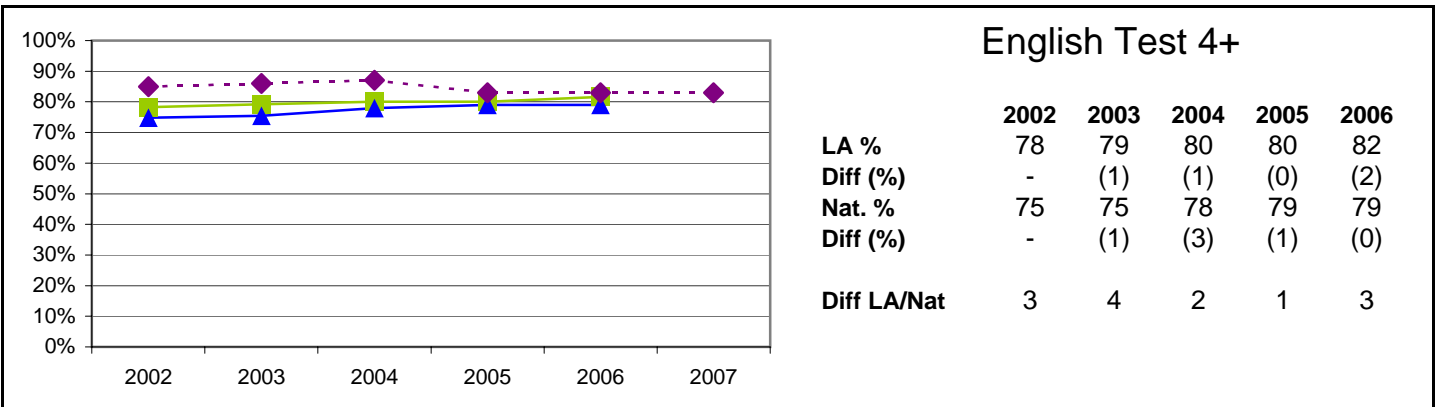
855 Leicestershire



Note:
 The contextual data relates to the Key Stage 2 Cohort only.
 Ethnic Background does not include Refused and Information Not Obtained Classified pupils

Key Stage Two Results 2002 - 2006: English Test & TA, Percentages at Levels 4+ & 5+

855 Leicestershire



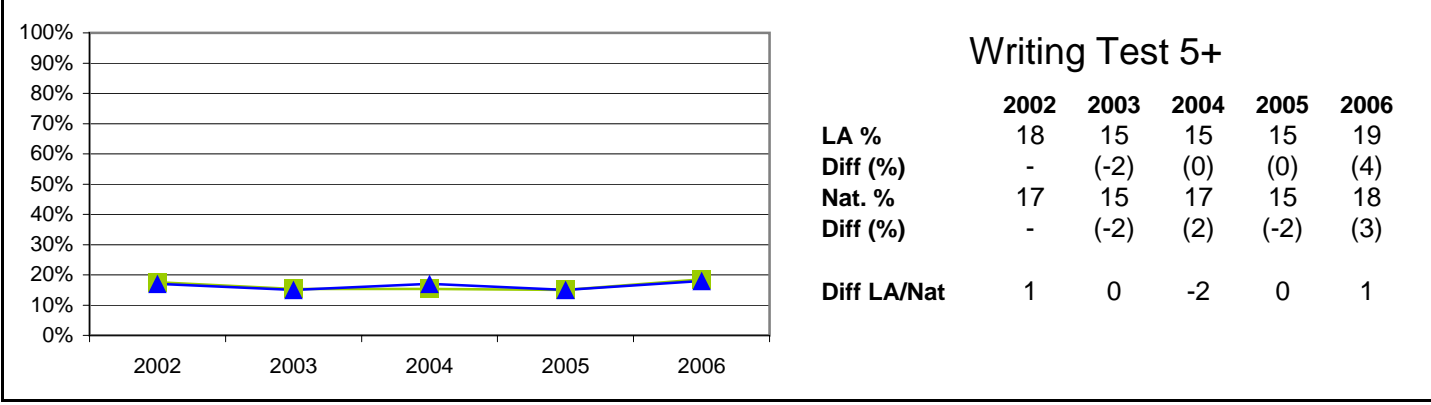
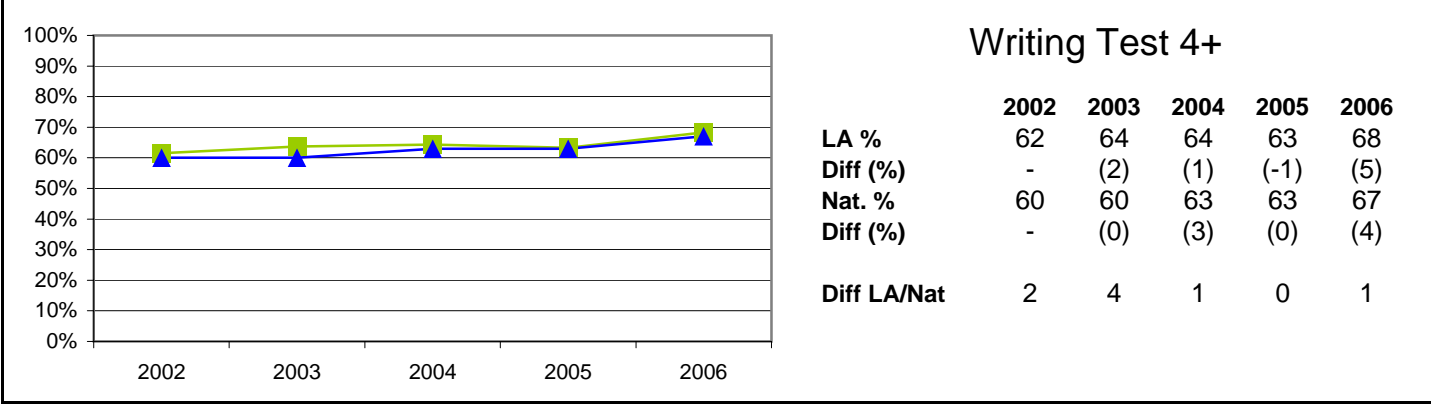
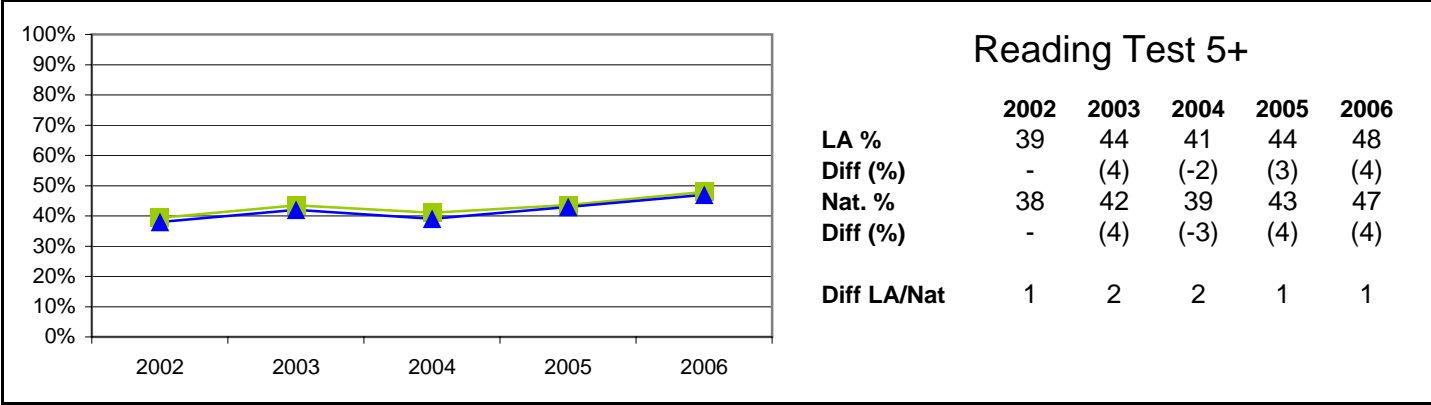
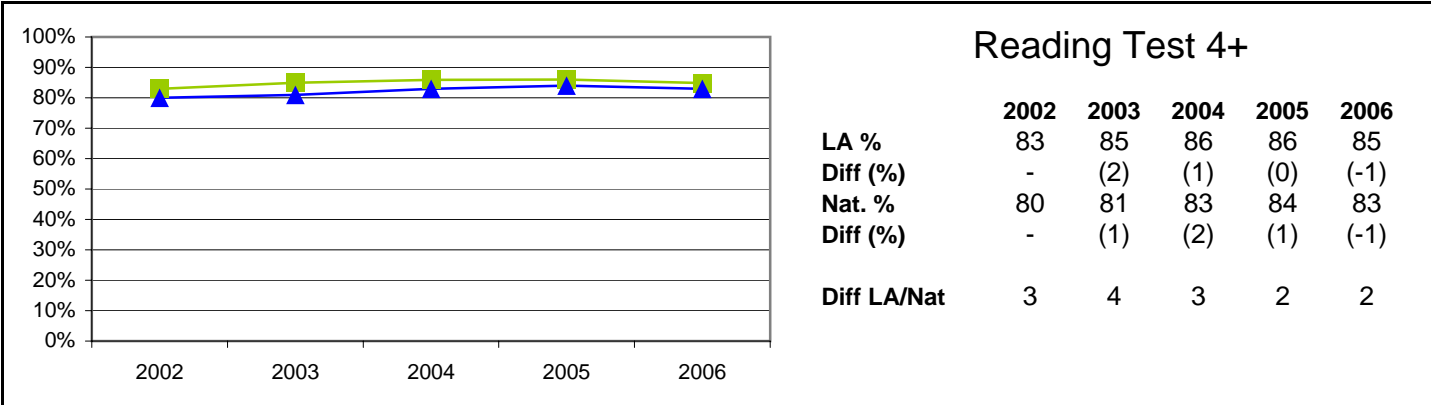
Most figures derived from August 2006 DfES information.

National Figures have been obtained from the DfES Statistical First Release SFR31/2006. (National Curriculum Assessments at Key Stage 2 in England, 2006 (Provisional) Tables).

Notes: LA data for each year relates to all schools (including special schools and the PRU). National data for each year relates to all schools (including special schools) but not PRUs.

Key Stage 2 Results 2002 - 2006: Reading and Writing Tests Percentages at Levels 4+ & 5+

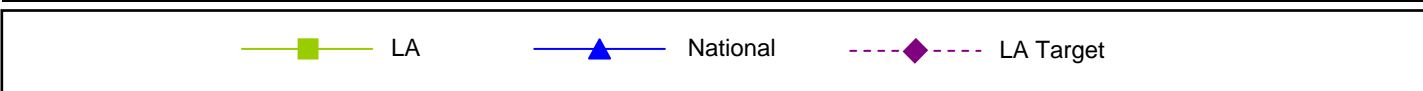
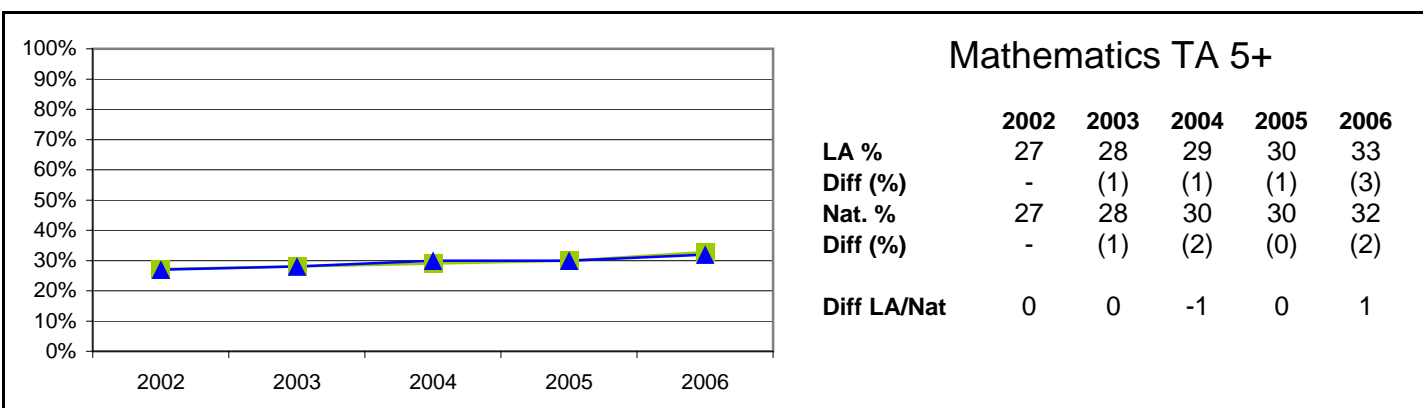
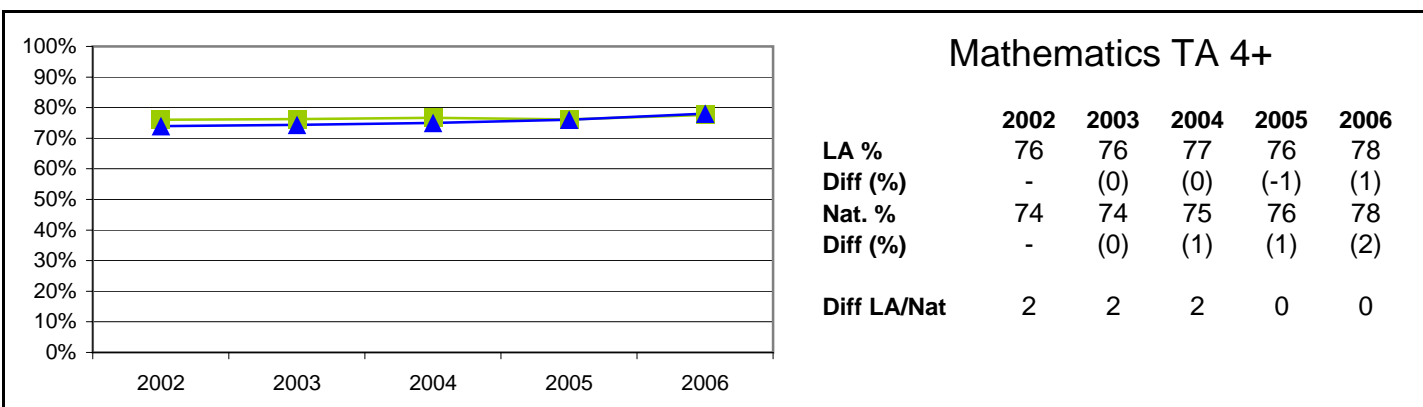
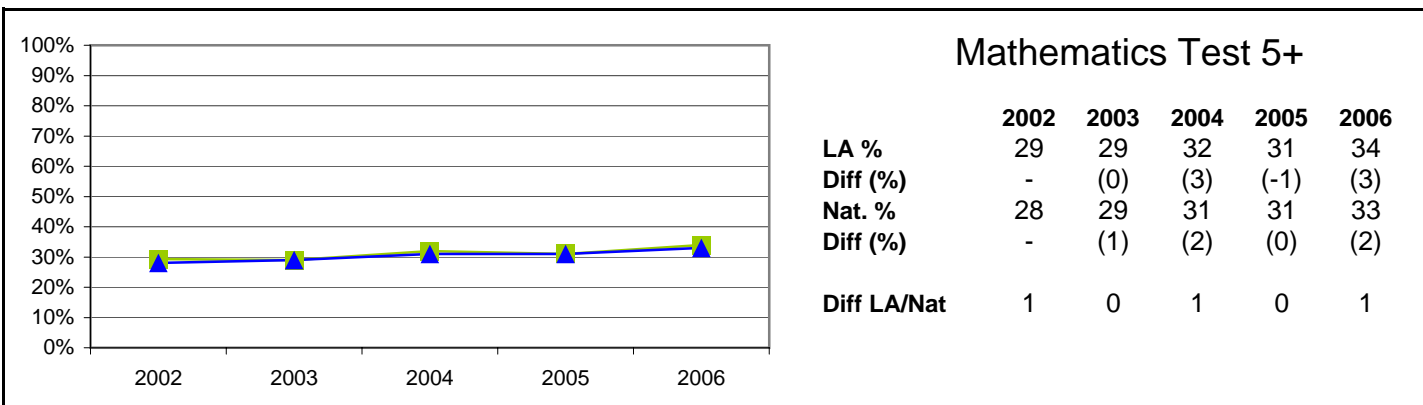
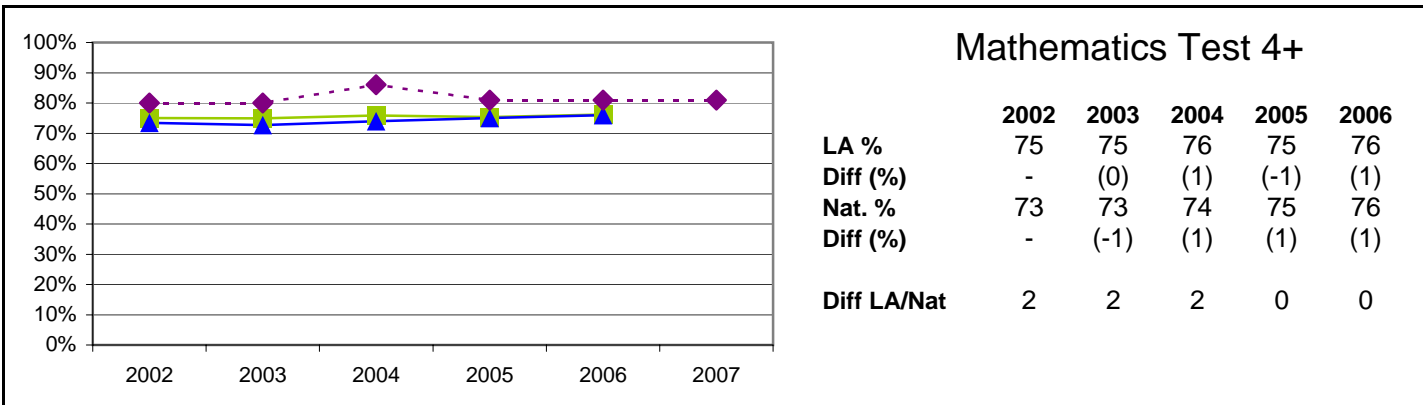
855 Leicestershire



Most figures derived from August 2006 DfES information.
 National Figures have been obtained from the DfES Statistical First Release SFR31/2006. (National Curriculum Assessments at Key Stage 2 in England, 2006 (Provisional) Tables).
Notes: LA data for each year relates to all schools (including special schools and the PRU). National data for each year relates to all schools (including special schools) but not PRUs.

Key Stage Two Results 2002 - 2006: Mathematics Test & TA, Percentages at Levels 4+ & 5+

855 Leicestershire



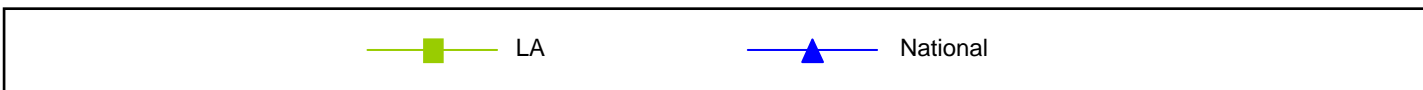
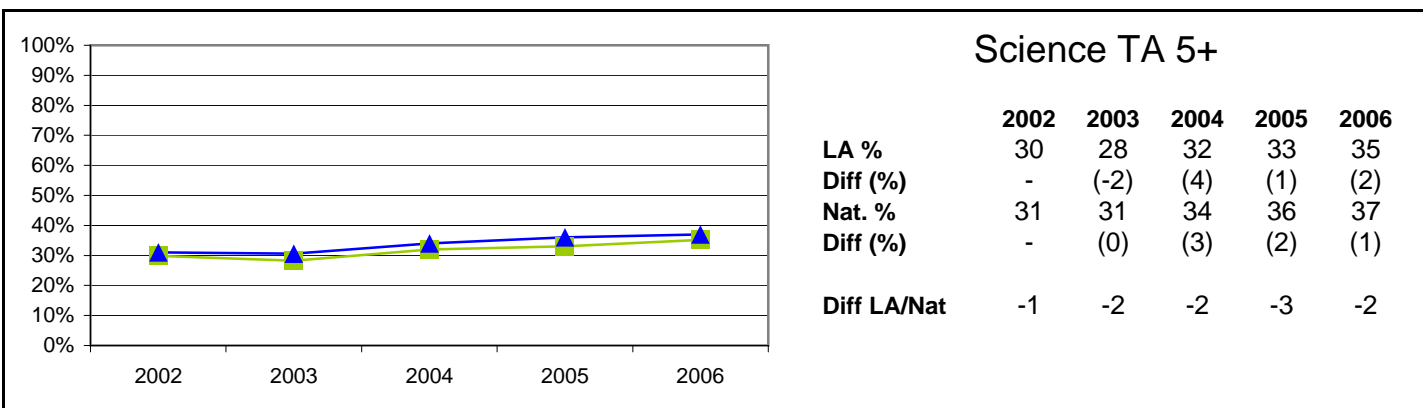
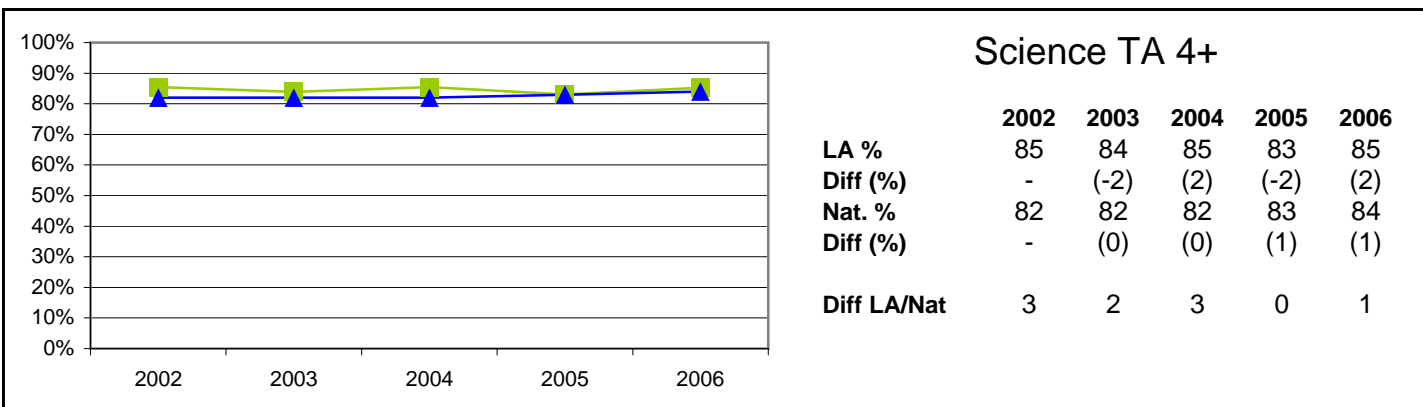
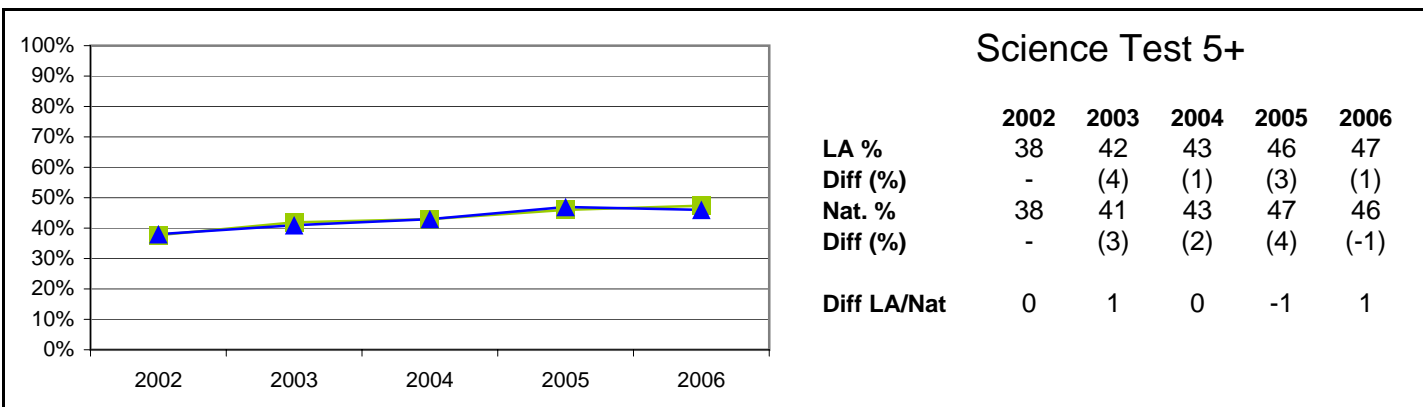
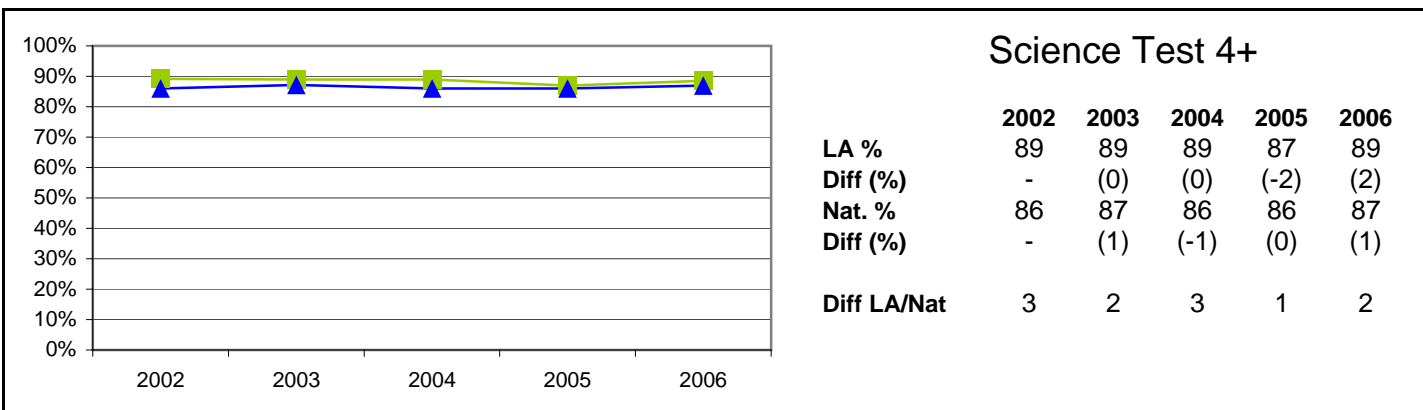
Most figures derived from August 2006 DfES information.

National Figures have been obtained from the DfES Statistical First Release SFR31/2006. (National Curriculum Assessments at Key Stage 2 in England, 2006 (Provisional) Tables).

Notes: LA data for each year relates to all schools (including special schools and the PRU). National data for each year relates to all schools (including special schools) but not PRUs.

Key Stage Two Results 2002 - 2006: Science Test & TA, Percentages at Levels 4+ & 5+

855 Leicestershire



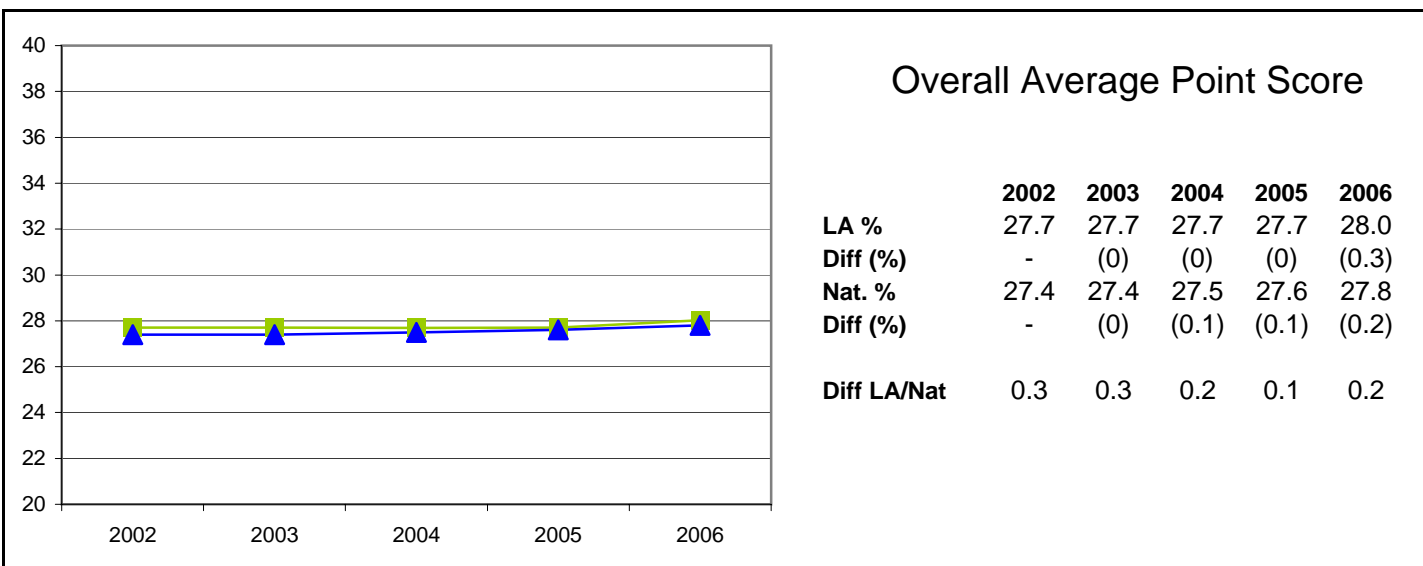
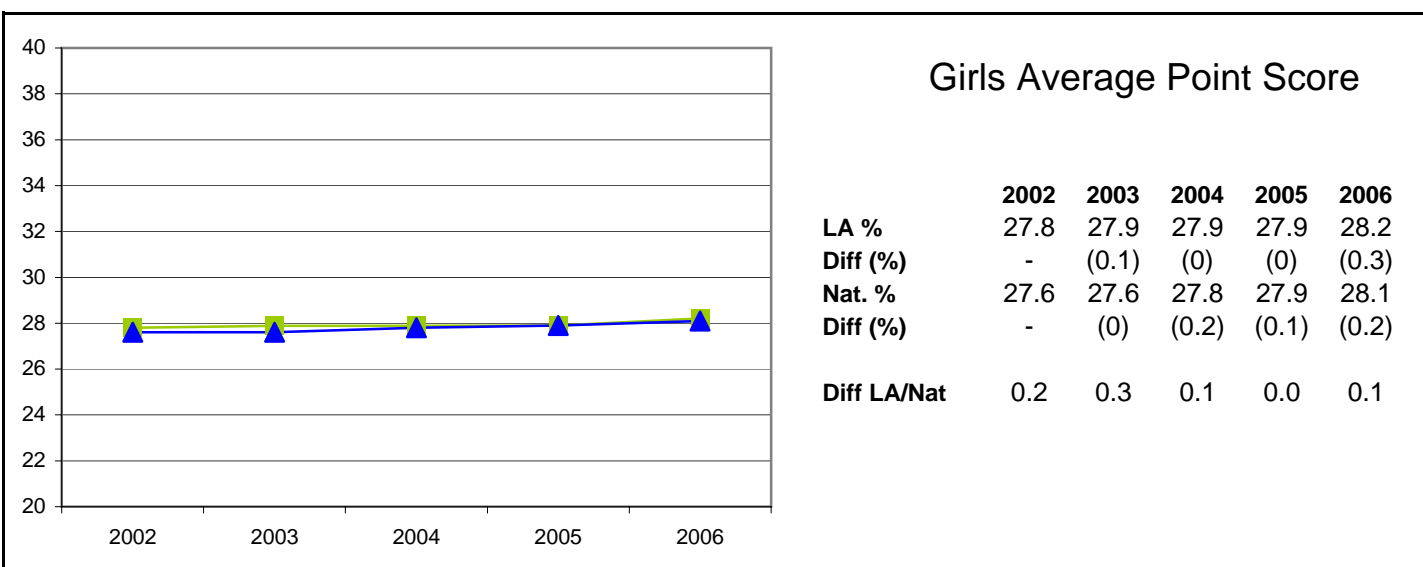
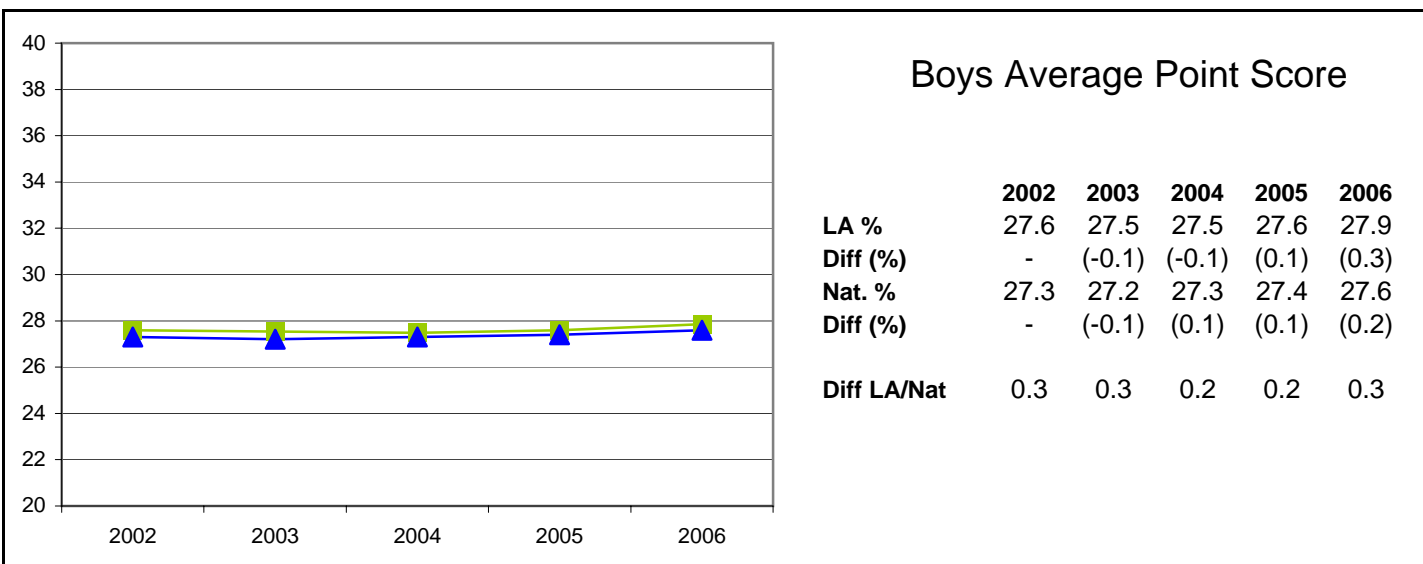
Most figures derived from August 2006 DfES information.

National Figures have been obtained from the DfES Statistical First Release SFR31/2006. (National Curriculum Assessments at Key Stage 2 in England, 2006 (Provisional) Tables).

Notes: LA data for each year relates to all schools (including special schools and the PRU). National data for each year relates to all schools (including special schools) but not PRUs.

Key Stage Two Results 2002 - 2006: Average Point Score

855 Leicestershire



—■— LA —▲— National

Most figures derived from August 2006 DfES information.

National Figures have been obtained from the DfES Statistical First Release SFR31/2006. (National Curriculum Assessments at Key Stage 2 in England, 2006 (Provisional) Tables).

Notes: LA data for each year relates to all schools (including special schools and the PRU). National data for each year relates to all schools (including special schools, but not PRUs).

Key Stage 2 Results 2002 - 2006: Historical Gender Analysis, Level 4+, 5+ & APS

855 Leicestershire

English

Boys	LA					National				
	2002	2003	2004	2005	2006	2002	2003	2004	2005	2006
Level	2002	2003	2004	2005	2006	2002	2003	2004	2005	2006
4	74%	74%	75%	75%	77%	70%	70%	72%	74%	74%
5	26%	21%	21%	20%	27%	24%	21%	21%	21%	26%
APS	26.7	26.3	26.3	26.4	26.9	-	-	-	26.2	26.6

Girls	LA					National				
	2002	2003	2004	2005	2006	2002	2003	2004	2005	2006
Level	2002	2003	2004	2005	2006	2002	2003	2004	2005	2006
4	82%	85%	85%	85%	86%	79%	81%	83%	84%	85%
5	34%	34%	33%	33%	40%	34%	33%	33%	33%	39%
APS	27.9	28.0	27.9	27.9	28.4	-	-	-	27.8	28.3

Gender Gap	LA					National				
	2002	2003	2004	2005	2006	2002	2003	2004	2005	2006
Level	2002	2003	2004	2005	2006	2002	2003	2004	2005	2006
4	-8%	-11%	-10%	-10%	-9%	-9%	-11%	-11%	-10%	-11%
5	-8%	-13%	-12%	-12%	-13%	-10%	-12%	-12%	-12%	-13%
APS	-1.2	-1.7	-1.5	-1.5	-1.5	-	-	-	-1.6	-1.7

Reading

Boys	LA					National				
	2002	2003	2004	2005	2006	2002	2003	2004	2005	2006
Level	2002	2003	2004	2005	2006	2002	2003	2004	2005	2006
4	80%	82%	83%	84%	82%	77%	78%	79%	82%	79%
5	37%	39%	36%	39%	42%	35%	38%	33%	39%	41%
APS	27.7	27.9	27.7	27.9	28.0	-	-	-	-	-

Girls	LA					National				
	2002	2003	2004	2005	2006	2002	2003	2004	2005	2006
Level	2002	2003	2004	2005	2006	2002	2003	2004	2005	2006
4	86%	88%	89%	89%	88%	83%	84%	87%	87%	87%
5	42%	48%	48%	49%	54%	41%	47%	46%	47%	53%
APS	28.5	29.1	29.0	29.1	29.3	-	-	-	-	-

Gender Gap	LA					National				
	2002	2003	2004	2005	2006	2002	2003	2004	2005	2006
Level	2002	2003	2004	2005	2006	2002	2003	2004	2005	2006
4	-5%	-6%	-7%	-5%	-7%	-6%	-6%	-8%	-5%	-8%
5	-5%	-9%	-12%	-10%	-12%	-6%	-9%	-13%	-8%	-12%
APS	-0.8	-1.1	-1.3	-1.1	-1.3	-	-	-	-	-

Writing

Boys	LA					National				
	2002	2003	2004	2005	2006	2002	2003	2004	2005	2006
Level	2002	2003	2004	2005	2006	2002	2003	2004	2005	2006
4	54%	54%	58%	54%	61%	52%	52%	56%	55%	59%
5	13%	11%	12%	10%	14%	12%	11%	13%	10%	13%
APS	24.6	24.5	24.7	24.4	25.1	-	-	-	-	-

Girls	LA					National				
	2002	2003	2004	2005	2006	2002	2003	2004	2005	2006
Level	2002	2003	2004	2005	2006	2002	2003	2004	2005	2006
4	69%	74%	72%	73%	76%	68%	69%	71%	72%	75%
5	23%	20%	19%	21%	24%	22%	20%	21%	21%	23%
APS	26.3	26.4	26.2	26.5	26.8	-	-	-	-	-

Gender Gap	LA					National				
	2002	2003	2004	2005	2006	2002	2003	2004	2005	2006
Level	2002	2003	2004	2005	2006	2002	2003	2004	2005	2006
4	-15%	-19%	-14%	-18%	-15%	-16%	-17%	-15%	-17%	-16%
5	-10%	-8%	-6%	-11%	-10%	-10%	-9%	-8%	-11%	-10%
APS	-1.7	-2.0	-1.5	-2.0	-1.7	-	-	-	-	-

Most figures derived from August 2006 DiES information.

National Figures have been obtained from the DiES Statistical First Release SFR31/2006. (National Curriculum Assessments at Key Stage 2 in England, 2006 (Provisional) Tables).

Notes: LA data for each year relates to all schools (including special schools and the PRU). National data for each year relates to all schools (including special schools) but not PRUs.

Key Stage 2 Results 2002 - 2006: Historical Gender Analysis, Level 4+, 5+ & APS

855 Leicestershire

Mathematics

Boys	LA					National				
	2002	2003	2004	2005	2006	2002	2003	2004	2005	2006
Level	2002	2003	2004	2005	2006	2002	2003	2004	2005	2006
4	76%	76%	76%	76%	78%	73%	73%	74%	76%	77%
5	32%	33%	35%	33%	36%	30%	32%	33%	33%	36%
APS	27.4	27.4	27.4	27.3	27.6	-	-	-	27.2	27.4

Girls	LA					National				
	2002	2003	2004	2005	2006	2002	2003	2004	2005	2006
Level	2002	2003	2004	2005	2006	2002	2003	2004	2005	2006
4	74%	74%	76%	74%	74%	73%	72%	74%	75%	75%
5	26%	25%	29%	29%	31%	25%	26%	29%	28%	31%
APS	26.8	26.8	27.1	27.0	27.1	-	-	-	26.9	27.1

Gender Gap	LA					National				
	2002	2003	2004	2005	2006	2002	2003	2004	2005	2006
Level	2002	2003	2004	2005	2006	2002	2003	2004	2005	2006
4	2%	3%	1%	2%	3%	0%	1%	0%	1%	2%
5	6%	8%	5%	5%	5%	5%	6%	4%	5%	5%
APS	0.6	0.6	0.3	0.4	0.5	-	-	-	0.3	0.3

Science

Boys	LA					National				
	2002	2003	2004	2005	2006	2002	2003	2004	2005	2006
Level	2002	2003	2004	2005	2006	2002	2003	2004	2005	2006
4	89%	90%	89%	87%	88%	86%	86%	86%	86%	86%
5	39%	42%	44%	48%	47%	38%	40%	43%	48%	45%
APS	28.8	28.9	28.9	29.0	29.0	-	-	-	28.9	28.7

Girls	LA					National				
	2002	2003	2004	2005	2006	2002	2003	2004	2005	2006
Level	2002	2003	2004	2005	2006	2002	2003	2004	2005	2006
4	89%	90%	89%	87%	89%	87%	87%	86%	87%	87%
5	36%	42%	43%	45%	48%	37%	41%	43%	46%	46%
APS	28.6	28.9	28.8	28.9	29.1	-	-	-	28.9	28.9

Gender Gap	LA					National				
	2002	2003	2004	2005	2006	2002	2003	2004	2005	2006
Level	2002	2003	2004	2005	2006	2002	2003	2004	2005	2006
4	0%	0%	0%	0%	-1%	-1%	-1%	0%	-1%	-1%
5	2%	0%	1%	3%	0%	1%	-1%	0%	2%	-1%
APS	0.2	0.0	0.1	0.2	-0.1	-	-	-	0.0	-0.2



Gender gap less than national gender gap



Gender gap greater than national gender gap

Most figures derived from August 2006 DfES information.

National Figures have been obtained from the DfES Statistical First Release SFR31/2006. (National Curriculum Assessments at Key Stage 2 in England, 2006 (Provisional) Tables).

Notes: LA data for each year relates to all schools (including special schools and the PRU). National data for each year relates to all schools (including special schools) but not PRUs.

Key Stage 2 Results 2002 - 2006 Ethnicity Analysis: English


855 Leicestershire


Percentage achieving Level 4+

Ethnicity	LA					National				
	2002	2003	2004	2005	2006	2002	2003	2004	2005	2006
White British	79%	79%	79%	80%	81%	-	76%	78%	80%	-
Irish	69%	86%	91%	83%	89%	-	82%	82%	84%	-
Any other White background	75%	72%	74%	76%	78%	-	72%	73%	75%	-
Total White	79%	79%	79%	80%	81%	-	76%	78%	79%	-
White and Black African	100%	100%	82%	89%	100%	-	73%	75%	77%	-
White and Black Caribbean	66%	84%	75%	77%	79%	-	78%	79%	80%	-
White and Asian	84%	85%	92%	86%	86%	-	82%	84%	85%	-
Any other Mixed background	73%	85%	90%	88%	88%	-	79%	81%	81%	-
Total Mixed	75%	86%	86%	83%	84%	-	77%	79%	80%	-
Indian	82%	83%	86%	84%	88%	-	80%	83%	83%	-
Pakistani	75%	83%	84%	77%	81%	-	61%	68%	68%	-
Bangladeshi	61%	50%	66%	70%	79%	-	69%	72%	74%	-
Any other Asian background	71%	75%	82%	71%	83%	-	76%	78%	78%	-
Total Asian	79%	80%	84%	82%	87%	-	70%	75%	75%	-
Black Caribbean	90%	67%	83%	77%	89%	-	68%	70%	72%	-
Black African	71%	80%	78%	78%	71%	-	70%	72%	71%	-
Any other Black background	100%	67%	67%	0%	75%	-	71%	72%	73%	-
Total Black	83%	71%	78%	74%	80%	-	69%	71%	72%	-
Chinese	100%	89%	84%	82%	81%	-	83%	83%	86%	-
Any other ethnic group	29%	75%	72%	86%	81%	-	68%	70%	71%	-
Unclassified	71%	77%	77%	75%	79%	-	70%	72%	75%	-
All pupils	79%	79%	80%	80%	82%	-	75%	77%	79%	-


Differences

Ethnicity	LA vs. National				
	2002	2003	2004	2005	2006
White British	-	3%	1%	0%	-
Irish	-	4%	9%	-1%	-
Any other White background	-	0%	1%	1%	-
Total White	-	3%	1%	1%	-
White and Black African	-	27%	7%	12%	-
White and Black Caribbean	-	6%	-4%	-3%	-
White and Asian	-	3%	8%	1%	-
Any other Mixed background	-	6%	9%	6%	-
Total Mixed	-	9%	7%	3%	-
Indian	-	3%	3%	1%	-
Pakistani	-	22%	16%	9%	-
Bangladeshi	-	-19%	-6%	-4%	-
Any other Asian background	-	-1%	4%	-7%	-
Total Asian	-	10%	9%	7%	-
Black Caribbean	-	-1%	13%	5%	-
Black African	-	10%	6%	7%	-
Any other Black background	-	-4%	-5%	-73%	-
Total Black	-	2%	7%	2%	-
Chinese	-	6%	1%	-4%	-
Any other ethnic group	-	7%	2%	15%	-
Unclassified	-	7%	5%	0%	-
All pupils	-	4%	3%	1%	-

 Performance greater than the national average for the ethnic group

 Performance less than the national average for the ethnic group

 Attainment greater than the comparator figure

 Attainment less than the comparator figure

Figures derived from the most recent DfES data sources in all cases.

Notes: LA data for each year relates to all schools (including special schools and the PRU). National data for each year relates to all schools (including special schools) but not PRUs.

Key Stage 2 Results 2002 - 2006 Ethnicity Analysis: Mathematics


855 Leicestershire


Percentage achieving Level 4+

Ethnicity	LA					National				
	2002	2003	2004	2005	2006	2002	2003	2004	2005	2006
White British	76%	75%	76%	76%	76%	-	73%	75%	76%	-
Irish	69%	86%	100%	89%	89%	-	78%	78%	80%	-
Any other White background	72%	66%	71%	67%	73%	-	70%	70%	73%	-
Total White	76%	75%	76%	75%	76%	-	73%	74%	76%	-
White and Black African	75%	88%	73%	89%	100%	-	67%	69%	70%	-
White and Black Caribbean	63%	69%	73%	70%	71%	-	73%	73%	74%	-
White and Asian	72%	72%	85%	77%	84%	-	78%	80%	81%	-
Any other Mixed background	78%	76%	78%	85%	78%	-	75%	76%	76%	-
Total Mixed	71%	73%	78%	77%	78%	-	72%	74%	75%	-
Indian	80%	79%	81%	78%	82%	-	77%	80%	80%	-
Pakistani	75%	33%	84%	64%	76%	-	58%	61%	62%	-
Bangladeshi	57%	53%	63%	53%	66%	-	64%	67%	69%	-
Any other Asian background	88%	64%	69%	67%	77%	-	76%	79%	80%	-
Total Asian	79%	75%	79%	75%	80%	-	67%	70%	71%	-
Black Caribbean	80%	67%	50%	62%	78%	-	59%	61%	61%	-
Black African	29%	80%	78%	78%	57%	-	64%	66%	64%	-
Any other Black background	0%	100%	67%	0%	50%	-	62%	65%	65%	-
Total Black	56%	79%	67%	65%	65%	-	62%	64%	63%	-
Chinese	94%	94%	96%	88%	81%	-	89%	90%	91%	-
Any other ethnic group	43%	81%	83%	100%	88%	-	71%	73%	72%	-
Unclassified	69%	70%	77%	74%	76%	-	67%	69%	70%	-
All pupils	76%	75%	76%	75%	76%	-	72%	74%	75%	-


Differences

Ethnicity	LA vs. National				
	2002	2003	2004	2005	2006
White British	-	2%	1%	0%	-
Irish	-	8%	22%	9%	-
Any other White background	-	-4%	1%	-6%	-
Total White	-	2%	2%	-1%	-
White and Black African	-	21%	4%	19%	-
White and Black Caribbean	-	-4%	0%	-4%	-
White and Asian	-	-6%	5%	-4%	-
Any other Mixed background	-	1%	2%	9%	-
Total Mixed	-	1%	4%	2%	-
Indian	-	2%	1%	-2%	-
Pakistani	-	-25%	23%	2%	-
Bangladeshi	-	-11%	-5%	-16%	-
Any other Asian background	-	-12%	-10%	-13%	-
Total Asian	-	8%	9%	4%	-
Black Caribbean	-	8%	-11%	1%	-
Black African	-	16%	12%	14%	-
Any other Black background	-	38%	2%	-65%	-
Total Black	-	17%	3%	2%	-
Chinese	-	5%	6%	-3%	-
Any other ethnic group	-	10%	10%	28%	-
Unclassified	-	3%	8%	4%	-
All pupils	-	3%	2%	0%	-

 Performance greater than the national average for the ethnic group

 Performance less than the national average for the ethnic group

 Attainment greater than the comparator figure

 Attainment less than the comparator figure

Figures derived from the most recent DfES data sources in all cases.

Notes: LA data for each year relates to all schools (including special schools and the PRU). National data for each year relates to all schools (including special schools) but not PRUs.

Key Stage 2 Results 2002 - 2006 Ethnicity Analysis: Science


855 Leicestershire


Percentage achieving Level 4+

Ethnicity	LA					National				
	2002	2003	2004	2005	2006	2002	2003	2004	2005	2006
White British	90%	90%	89%	88%	89%	-	88%	87%	88%	-
Irish	85%	91%	91%	94%	100%	-	90%	88%	89%	-
Any other White background	86%	79%	80%	82%	80%	-	82%	81%	83%	-
Total White	90%	90%	89%	88%	89%	-	87%	87%	87%	-
White and Black African	75%	100%	91%	89%	100%	-	85%	84%	85%	-
White and Black Caribbean	88%	82%	82%	85%	84%	-	86%	85%	85%	-
White and Asian	91%	87%	94%	93%	92%	-	90%	89%	90%	-
Any other Mixed background	88%	94%	94%	95%	94%	-	88%	88%	88%	-
Total Mixed	88%	88%	90%	90%	89%	-	87%	86%	87%	-
Indian	86%	88%	86%	82%	88%	-	88%	87%	87%	-
Pakistani	90%	83%	84%	64%	67%	-	72%	73%	73%	-
Bangladeshi	70%	90%	78%	70%	74%	-	77%	78%	79%	-
Any other Asian background	90%	86%	79%	71%	86%	-	84%	85%	85%	-
Total Asian	86%	88%	85%	79%	86%	-	80%	79%	80%	-
Black Caribbean	90%	100%	67%	77%	89%	-	78%	78%	78%	-
Black African	71%	80%	100%	78%	57%	-	79%	78%	77%	-
Any other Black background	100%	100%	67%	0%	75%	-	80%	81%	79%	-
Total Black	83%	93%	83%	74%	75%	-	79%	78%	78%	-
Chinese	100%	94%	100%	94%	81%	-	91%	91%	92%	-
Any other ethnic group	71%	88%	72%	86%	94%	-	80%	80%	80%	-
Unclassified	87%	90%	86%	86%	88%	-	83%	82%	84%	-
All pupils	89%	89%	89%	87%	89%	-	86%	86%	86%	-


Differences

Ethnicity	LA vs. National				
	2002	2003	2004	2005	2006
White British	-	2%	2%	0%	-
Irish	-	1%	3%	5%	-
Any other White background	-	-3%	-1%	-1%	-
Total White	-	3%	2%	1%	-
White and Black African	-	15%	7%	4%	-
White and Black Caribbean	-	-4%	-3%	0%	-
White and Asian	-	-3%	5%	3%	-
Any other Mixed background	-	6%	6%	7%	-
Total Mixed	-	1%	4%	3%	-
Indian	-	0%	-1%	-5%	-
Pakistani	-	11%	11%	-9%	-
Bangladeshi	-	13%	0%	-9%	-
Any other Asian background	-	2%	-6%	-14%	-
Total Asian	-	8%	6%	-1%	-
Black Caribbean	-	22%	-11%	-1%	-
Black African	-	1%	22%	1%	-
Any other Black background	-	20%	-14%	-79%	-
Total Black	-	14%	5%	-4%	-
Chinese	-	3%	9%	2%	-
Any other ethnic group	-	8%	-8%	6%	-
Unclassified	-	7%	4%	2%	-
All pupils	-	3%	3%	1%	-

 Performance greater than the national average for the ethnic group

 Performance less than the national average for the ethnic group

 Attainment greater than the comparator figure

 Attainment less than the comparator figure

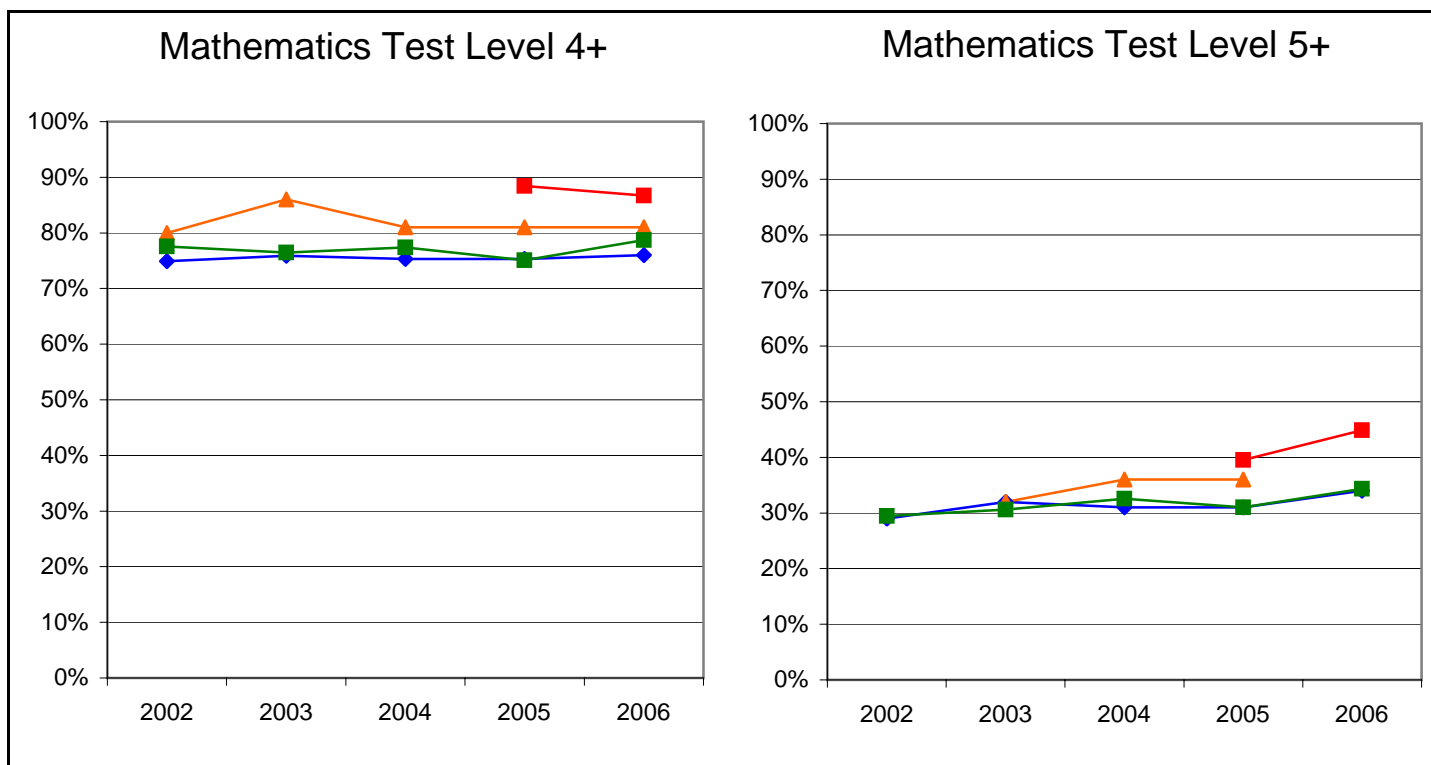
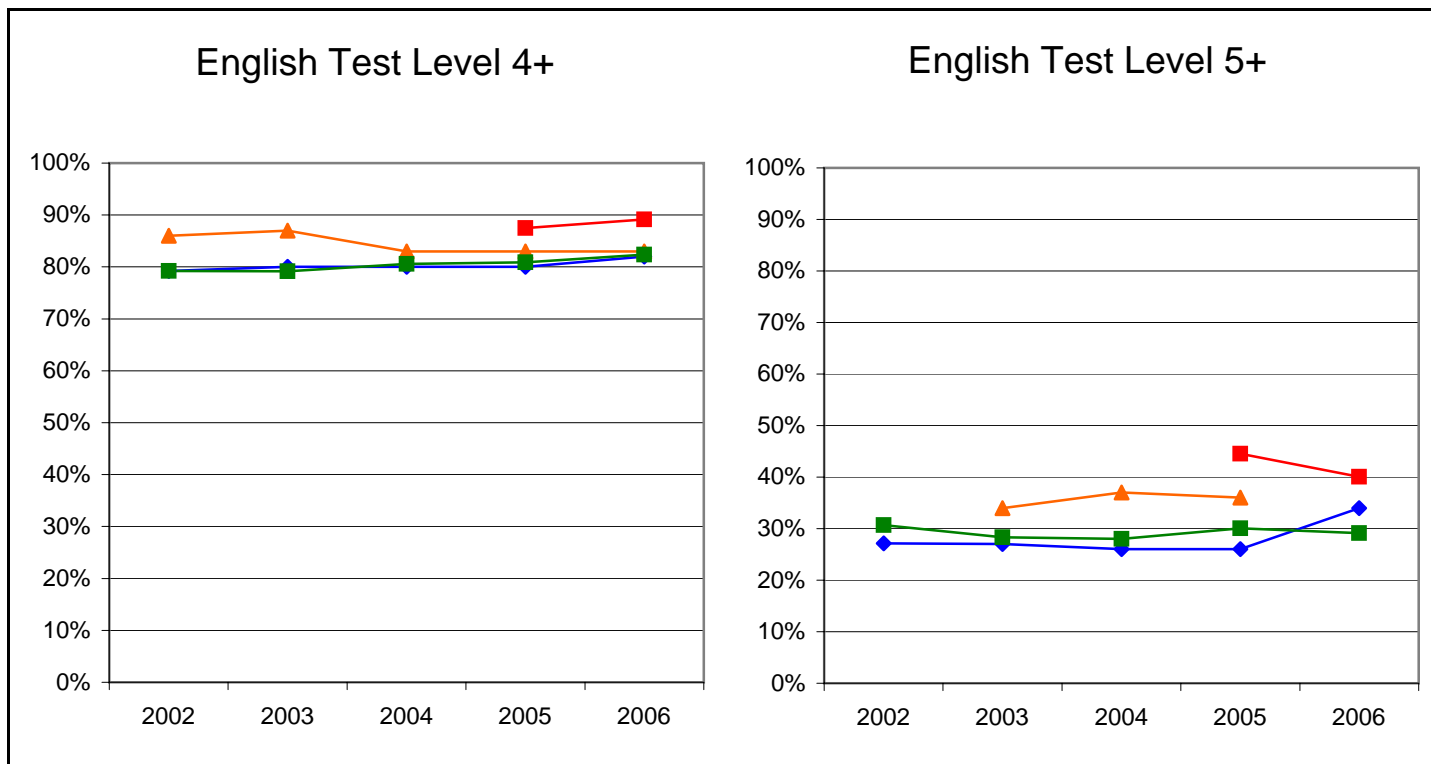
Figures derived from the most recent DfES data sources in all cases.

Notes: LA data for each year relates to all schools (including special schools and the PRU). National data for each year relates to all schools (including special schools) but not PRUs.

Key Stage 2 Results, Targets and FFT Estimates 2002 - 2006 Levels 4+ and 5+

855 Leicestershire

Graphs display a historical comparison of LA attainment against LA Targets and FFT Type 'A' and 'D' estimates



Notes:
 LA Targets based on EDP (2002 to 2004) and SaLTS (2005 onwards) submissions.
 FFT Type 'A' and 'D' data based on estimates as at September 2006.