

**Key Stage
Two
Officer Pack
2007**

Performance Team,
Knowledge Management, CYPS
Richard Gretton: 0116 305 6638
Lea Parsons : 0116 305 6481

KEY STAGE TWO GRAPH PACK

Background

This report provides an overview of school level, local authority and national Key Stage Two attainment data. The purpose of the report is to provide basic attainment comparisons between the local and national situation and to include further analysis of attainment by gender and ethnicity.

The Key Stage Two Graph Pack includes the following contents:

- Breakdown of 2007 Key Stage Two attainment
- Headline contextual data for the 2007 cohort
- English Test Attainment and Teacher Assessment 4+ and 5+ 2003 to 2007
- Reading and Writing Test Attainment 4+ and 5+ 2003 to 2007
- Maths Test Attainment and Teacher Assessment 4+ and 5+ 2003 to 2007
- Science Test Attainment and Teacher Assessment 4+ and 5+ 2003 to 2007
- KS2 Average Point Scores by Gender 2003 to 2007
- Key Stage Two Pupil number counts by Ethnicity and Gender between 2003 and 2007
- Gender Analysis 4+, 5+ and APS 2003 to 2007 for English, Maths, Science, Reading and Writing
- Ethnicity Analysis 4+ 2003 to 2007 for English, Maths and Science
- FFT Type 'B'/'D', Statutory Targets and Actual Attainment comparisons for English and Maths for 4+ and 5+

Technical details

1. Key Stage Two attainment data is supplied to the LA by the DCSF, the latest data supplied was made available 15th August 2007. All the School level and Local Authority data is derived from this data set. To allow analysis based on ethnicity the most recently available Spring School Census data has been matched into the data set. The data for 2007 at this stage of the academic year is classified as provisional.
2. The source of the National data for 2007 is the DCSF Statistical First Release SFR 24/2007 National Curriculum Assessments at Key Stage 2 in England, 2007 (Provisional). All historic national data has been obtained from a variety of DCSF attainment sources.
3. Included in the Graph Pack are sections on gender and ethnicity analysis. For gender analysis purposes we have highlighted where the gender gap is larger than the national average and for ethnic analysis purposes we have highlighted where headline performance is greater than or less than average national or local performance. No degree of significance is placed on the differences highlighted.
4. Also included in the analysis are FFT (Fischer Family Trust) Key Stage 2 Type 'B' and 'D' Estimates for 2003 to 2007 based on Key Stage One prior attainment (both test and teacher assessment data). FFT Type 'B' estimates are based upon individual pupils' prior attainment and gender adjusted to allow for the performance of 'similar' schools and Type 'D' estimates provide an indication of achievement that would be consistent with the progress made by students in schools with the highest value-added (top 25% of schools nationally) between Key Stage One and Key Stage Two.

Enquiries

Please contact the following people listed below if you wish to make any comments regarding this report or if you have any queries regarding the analysis.

As this analysis is very much developmental we would welcome any comments so that the product can improve and evolve.

Report contacts:

<p>Richard Gretton Statistics Manager Performance Team, Knowledge Management Children & Young People's Service Leicestershire County Council</p> <p>Tel No: 0116 305 6638 E-Mail: rgretton@leics.gov.uk</p>	<p>Lea Parsons Senior Analyst Performance Team, Knowledge Management Children & Young People's Service Leicestershire County Council</p> <p>Tel No: 0116 305 6481 E-Mail: lparsons@leics.gov.uk</p>
<p>Lynda Smith School Development Adviser School Improvement & Performance Service Children & Young People's Service Leicestershire County Council</p> <p>Tel No: 0116 305 6420 E-Mail: lysmith@leics.gov.uk</p>	

Headline commentary:

Leicestershire continues to perform better than the national average across English, Maths and Science at Key Stage Two in terms of 4+ and 5+ attainment. This year a 1% improvement in English at 4+ to 83% has occurred, which mirrored the national improvement to 80%. Maths 4+ in Leicestershire has showed the most improvement, increasing by 3% to 79% compared to a 1% improvement nationally to 77%. Science performance in Leicestershire is now equal to the national average after a 1% decline to 88% this year, whereas nationally a 1% improvement occurred. Other strong performance has been observed against the 5+ English thresholds with English increasing by 2% in Leicestershire to 36% whereas nationally only a 1% increase occurred.

Overall Leicestershire is just outside of the top quartile of all Local Authorities in England in terms of overall performance. This is in direct contrast to Key Stage One performance where Leicestershire is comfortably within the top quartile. Science attainment in comparison to English and Maths when judged against other Local Authorities is an underperforming area. Whereas English and Maths at 4+ and 5+ place Leicestershire within the top 25% of LAs, Science is just within the top 40% nationally. Attainment at 4+ and 5+ in Leicestershire is generally balanced, overall steady progress both nationally at 4+ is being made in English, Maths and Science, and over the last two years major improvement at 5+ have been made and sustained.

Leicestershire and National Key Stage 2 Performance (2001 to 2007)

	Year	4+			5+			APS	VA	
		English	Maths	Science	English	Maths	Science			
Leicestershire	2007	83	79	88	36	34	47	28.2	-	Provisional
National	2007	80	77	88	33	33	46	27.9	-	Provisional
Leicestershire	2006	82	76	89	34	34	47	28.0	99.7	
National	2006	79	76	87	32	33	46	27.8	99.8	
Leicestershire	2005	80	75	87	26	31	46	27.8	100.1	
National	2005	79	75	86	27	31	47	27.6	100.2	
Leicestershire	2004	80	76	89	27	32	43	27.7	99.9	
National	2004	78	74	86	27	31	43	27.5	100.0	
Leicestershire	2003	79	75	89	27	29	42	27.7	99.9	
National	2003	75	73	87	27	29	41	27.4	99.9	
Leicestershire	2002	78	75	89	30	29	38	28.0	-	
National	2002	75	73	86	29	28	38	-	-	
Leicestershire	2001	78	73	89	29	26	35	28.0	-	
National	2001	75	71	87	29	25	34	-	-	

Leicestershire's Key Stage 2 Performance (Rankings) against all LAs and Statistical Neighbour LAs (2007 data is provisional) (1 = highest ranked, 150 = lowest ranked)

	Year	4+			5+			APS	VA	LAs	
		English	Maths	Science	English	Maths	Science				
National	2007	28	37	55	35	35	57	38	-	150	Provisional
New CS Stat. N'bours	2007	4	3	10	5	4	7	6	-	11	Provisional
National	2006	28	62	23	42	40	52	45	90	150	
New CS Stat. N'bours	2006	4	8	5	6	4	8	6	5	11	
Stat. N'bours	2006	2	7	3	3	5	6	4	4	11	
National	2005	49	66	55	68	51	75	44	106	150	
New CS Stat. N'bours	2005	6	8	9	7	6	11	6	7	11	
Stat. N'bours	2005	4	8	9	7	5	10	5	6	11	
National	2004	34	43	15	52	43	58	46	88	150	
Stat. N'bours	2004	2	4	1	6	4	9	4	4	11	
National	2003	28	44	32	59	61	48	33	73	150	
Stat. N'bours	2003	2	4	4	7	4	7	3	6	11	
National	2002	31	41	23	36	33	56	-	-	150	
Stat. N'bours	2002	2	2	2	3	2	7	-	-	11	
National	2001	31	42	37	46	42	43	-	-	150	
Stat. N'bours	2001	2	2	3	2	2	3	-	-	11	

Notes: New CS Stat. N'bours (New Children Services Statistical Neighbours) relates to the new set of Statistical Neighbours issued in March 2007 by the DCSF following the revision of the previous Ofsted model to enable Children's Services Performance comparisons. "Stat. N'bours" relates to the previous Ofsted Statistical Neighbours that formed the basis of benchmarking comparisons prior to 2006.

Significant improvements are being made locally and nationally in terms of English, Reading, Writing and Maths across both genders at 4+ and 5+ attainment. This is leading to a narrowing of the gender gap particularly in relation to Reading and English at 5+, although Writing differentials are expanding in favour of girls as they continue to improve at a faster rate than boys. Also boys' performance in Maths is continuing to outperform girls by a larger rate at both 4+ and 5+. Locally the gender gaps in each subject are narrower than at the national level except for Writing.

The most recent ethnic comparisons available relate to the 2006 Key Stage Two attainment. These highlight that performance in English is strong across the fully array of ethnic groups, in terms of Maths a larger amount of under performance can be observed by some ethnic groups, and even more when Science is considered. This is directly related to Leicestershire performance overall in these subjects. It is noticeable that the White British cohort which represents approximately 86% of the Key Stage Two cohort only just outperforms the national average for the ethnic group in English, Maths and Science at 4+ and the gap is narrowing. The majority of the improvements in performance can be attributed to the Black and Minority Ethnic groups (BME).

In relation to FFT estimates, Leicestershire in 2007 achieved performance which was very close to the FFT Type 'B' estimates at 4+ due to increases in English and Maths attainment. A clearer differential exists at 5+ and at both 4+ and 5+ significant differences are observed against the Type 'D' FFT estimates.

Subject commentary:

English

English remains Leicestershire's strongest subject when compared with the performance in Maths and Science of the range of Local Authorities in England. Performance though declines for the 5+ attainment measure. Overall though, both locally and nationally, steady improvements at 4+ and 5+ are occurring. Leicestershire's comparative performance when judged in a national context in relation to boys is much stronger than girls at 4+ with boys again 3% higher than the National average and girls 1% higher.

In Leicestershire and nationally the gender gap declined by 2% at 4+ and 5+ due to stronger boys performance in comparison to limited improvements in relation to girls. By ethnic group performance is above national comparators for virtually all ethnic groups but the trend is a narrowing differential.

Reading

Significant improvements in relation to boys reading were made this year with a 4% increase at 5+ compared to a 2% national increase, at 4+ a 1% increase occurred compared to a 2% national increase. Girls' performance in Leicestershire remained unchanged compared to last year at 4+ and 5+, nationally this was mirrored at 4+ but girls 5% attainment did decline by 1%.

Overall Leicestershire continues to outperform the national average and the gender gap differential is lower locally compared to nationally. The gender gap in favour of girls at 4+ declined by 2% and by 5% at 5+.

Writing

Boys' attainment at 4+ and 5+ improved inline with the national improvements, whereas girls in Leicestershire improved by 2% at 4+ and 5+ compared to a national stagnation. As a result the gender gap across this subject has widened and Writing continues to be the subject at Key Stage Two with the largest gender differential by far at 4+ and 5+. Overall Leicestershire across both genders continues to outperform the national indicators when the subject is considered as a whole.

Mathematics

Boys' strong performance has been maintained this year with improvements occurring whereas nationally 4+ improved but 5+ declined. Leicestershire's boys perform higher than the national average. Girls' performance in Leicestershire has improved by 2% at 4+ and 1% at 5+ resulting in the removal of situation that existed last year where Leicestershire's girls were below/equal to the national average across 4+ and 5+ respectively.

Girls' overall in Maths in Leicestershire continue to be outperformed by boys, Maths is a subject where boys performance on a national scale has been a lot stronger than girls over the last two years.

Science

Performance across the genders is only just higher than the national performance when Average Point Score is considered. Attainment in this subject when judged at a national scale is Leicestershire's weakest in comparison to English and Maths. Improvements at 4+ in 2006 did occur but the lower attainment produced in 2007 has led to this national standing being lost. This year 1% declines occurred at 5+ for boys and 4+ and 5+ for girls. Nationally improvements in relation to boys occurred and girls made marginal increases.

855 Leicestershire Summary

Percentage of 11 year olds in school: levels of attainment

Boys	Other	1	2	3	4	5	6	Level 4 & above	Level 5 & above
Reading Test	9	0	0	8	36	46	-	83%	46%
Writing Test	8	0	0	30	47	15	-	62%	15%
English Test	7	0	0	13	49	30	-	79%	30%
Teacher Assessment	1	1	5	20	52	22	0	74%	22%
Maths Test	5	0	0	14	44	36	-	80%	36%
Teacher Assessment	1	1	4	15	43	36	0	79%	36%
Science Test	3	0	0	8	42	46	-	88%	46%
Teacher Assessment	1	0	1	13	49	35	0	84%	35%

Girls	Other	1	2	3	4	5	6	Level 4 & above	Level 5 & above
Reading Test	6	0	0	6	34	54	-	88%	54%
Writing Test	5	0	0	17	53	26	-	78%	26%
English Test	5	0	0	9	45	41	-	86%	41%
Teacher Assessment	1	0	2	11	51	35	0	86%	35%
Maths Test	5	0	1	17	45	32	-	76%	32%
Teacher Assessment	1	1	4	17	47	31	0	78%	31%
Science Test	3	0	0	8	41	47	-	88%	47%
Teacher Assessment	1	0	2	13	48	36	0	85%	36%

Boys & Girls	Other	1	2	3	4	5	6	Level 4 & above	Level 5 & above
Reading Test	8	0	0	7	35	50	-	85%	50%
Writing Test	6	0	0	24	50	20	-	70%	20%
English Test	6	0	0	11	47	35	-	82%	35%
Teacher Assessment	1	1	3	16	51	29	0	80%	29%
Maths Test	5	0	1	16	44	34	-	78%	34%
Teacher Assessment	1	1	4	16	45	34	0	79%	34%
Science Test	3	0	0	8	42	46	-	88%	46%
Teacher Assessment	1	0	1	13	49	36	0	84%	36%

		Average Level	Average Point Score
Boys	English Test	4.6	27.3
	Mathematics Test	4.6	27.8
	Science Test	4.8	29.0
Girls	English Test	4.8	28.6
	Mathematics Test	4.5	27.2
	Science Test	4.8	29.1
Boys & Girls	English Test	4.7	27.9
	Mathematics Test	4.6	27.5
	Science Test	4.8	29.0

Notes

Data based on DCSF datafeed 15 August 2007.

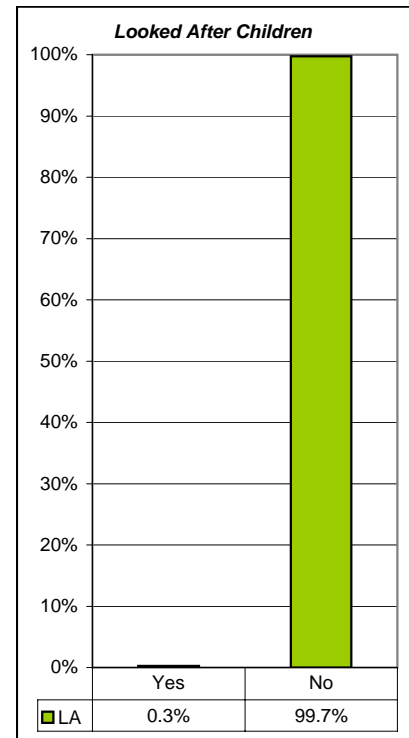
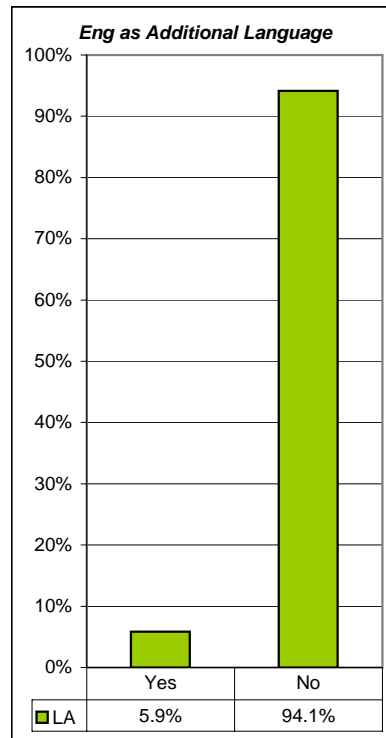
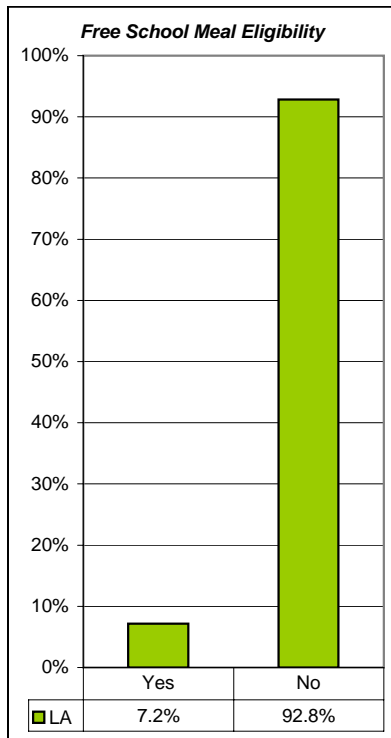
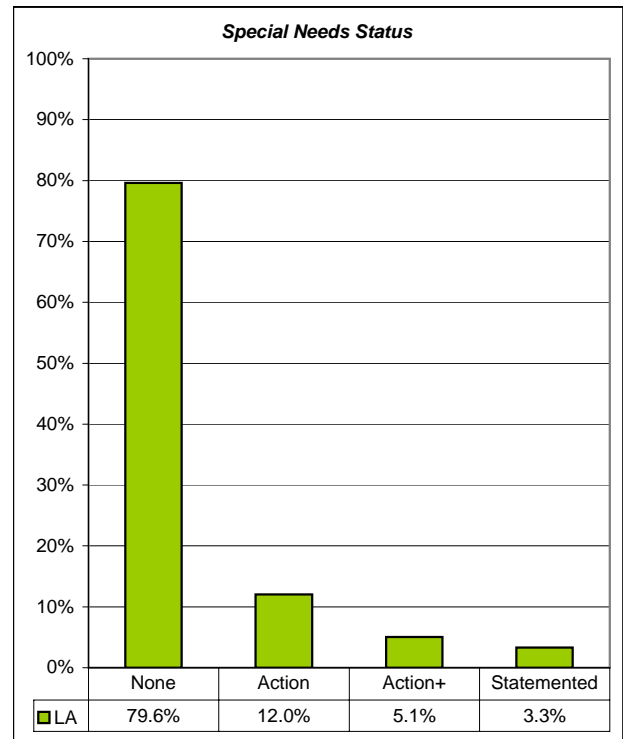
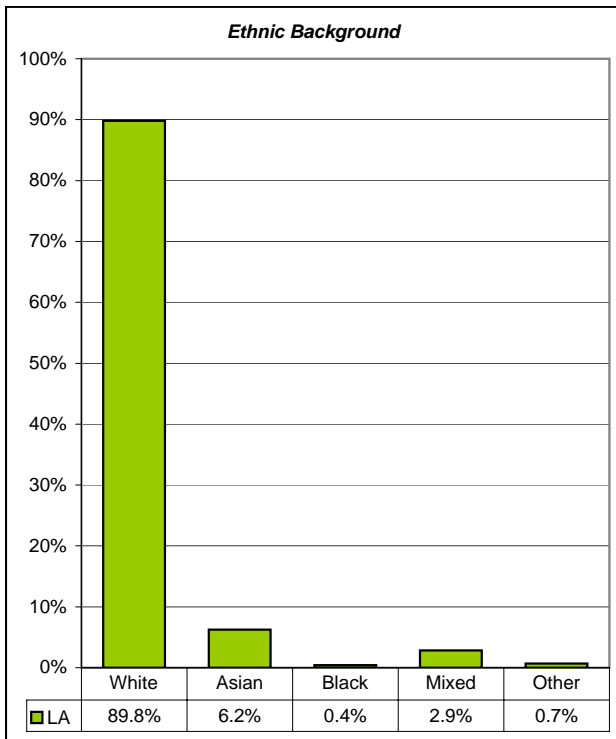
'Other' refers to pupils who were absent, disapplied, took the statutory tests but failed to register a level, those working at a level below that assessed by the tests and those whose test papers were lost.

Pupils achieving a grade "B" or "N" have been scored as gaining a Level 2 or 15 points.

Average Level reflects the true fine grading of point scores, e.g. 27 points represents Level 4.5 and 33 points represents Level 5.5 etc.

Key Stage Two Results 2007: SCHOOL CENSUS 2007 Contextual Data

855 Leicestershire



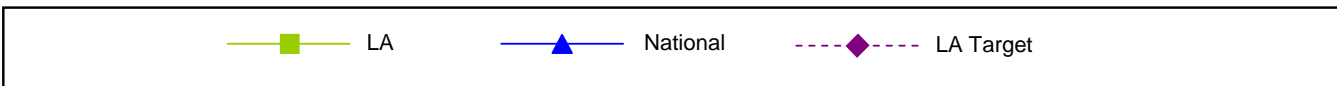
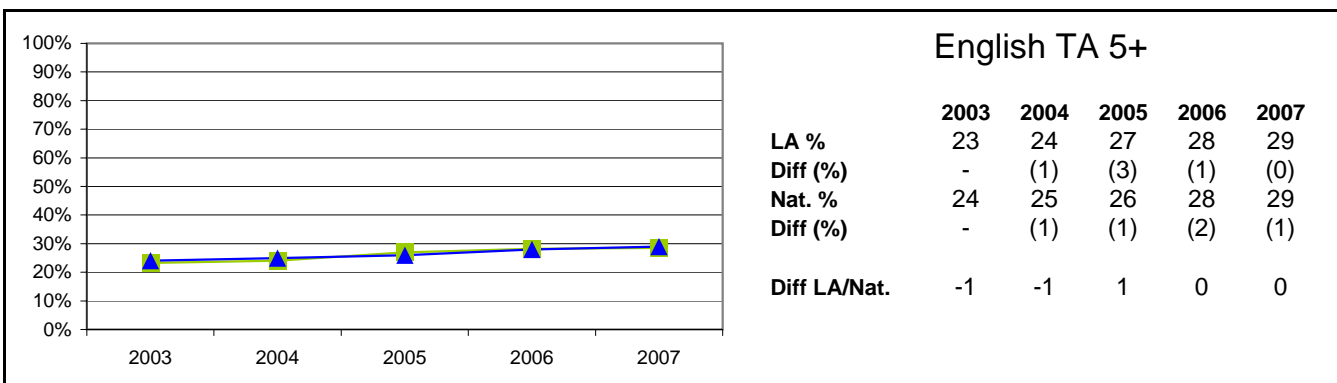
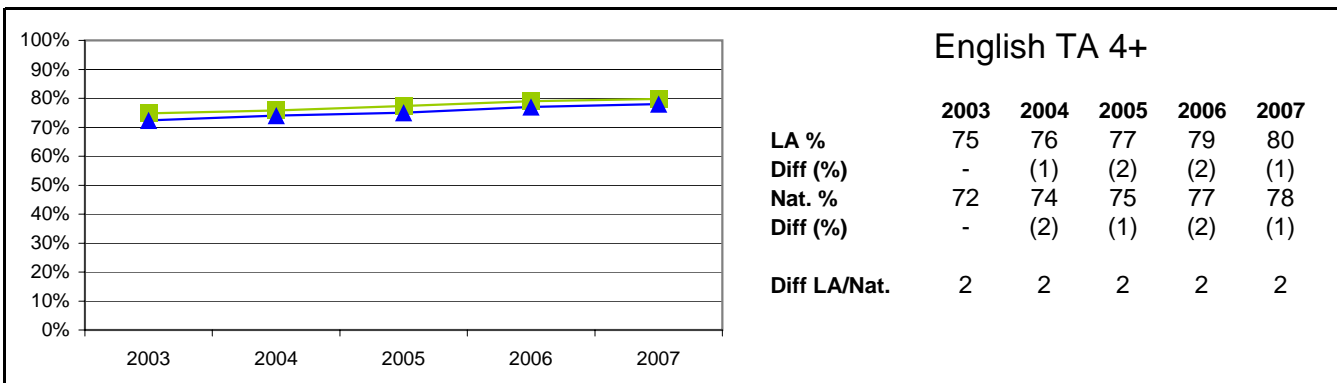
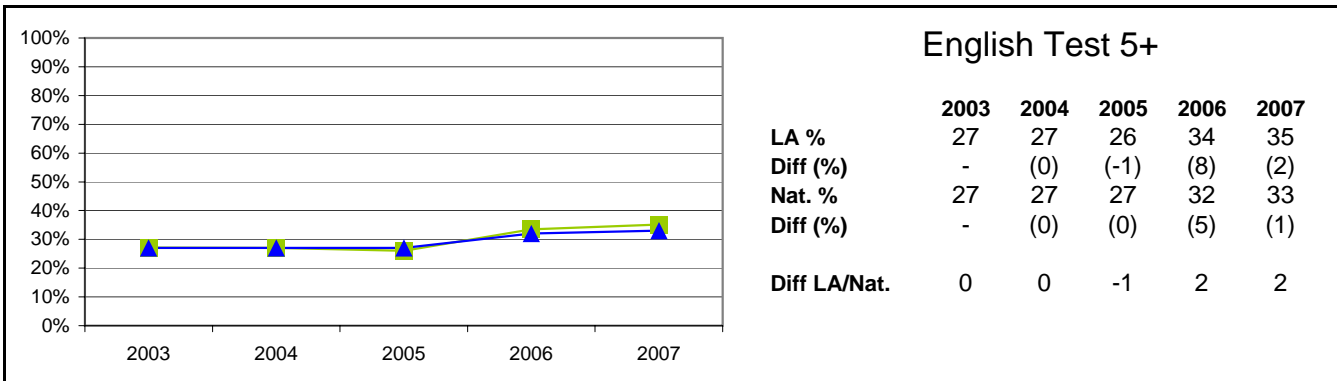
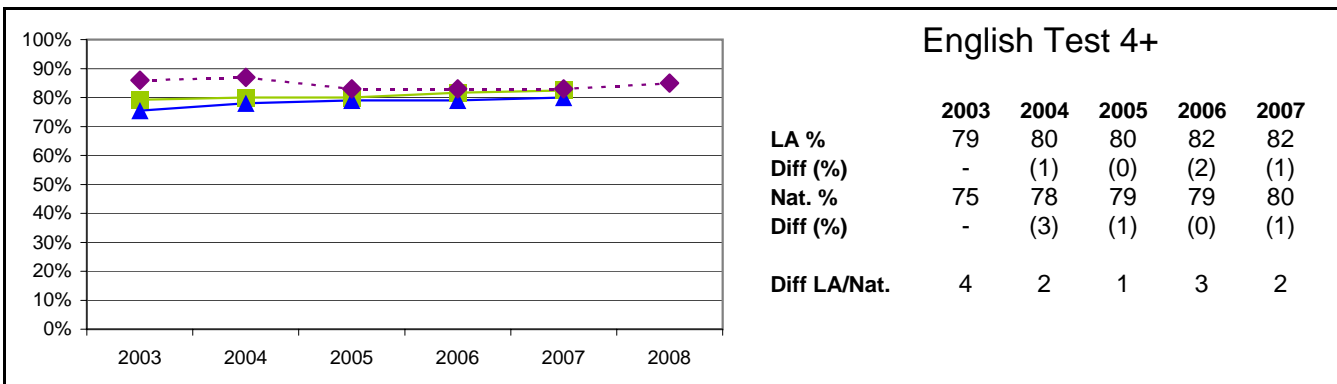
Note:

The contextual data relates to the Key Stage 2 Cohort only.

Ethnic Background does not include Refused and Information Not Obtained Classified pupils.

Key Stage Two Results 2003 - 2007: English Test & TA, Percentages at Levels 4+ & 5+

855 Leicestershire

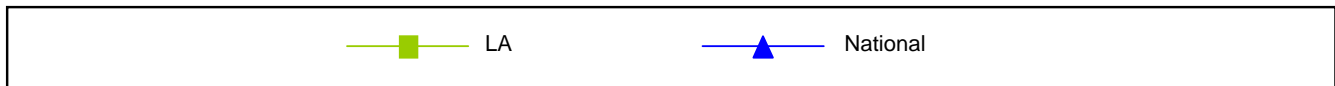
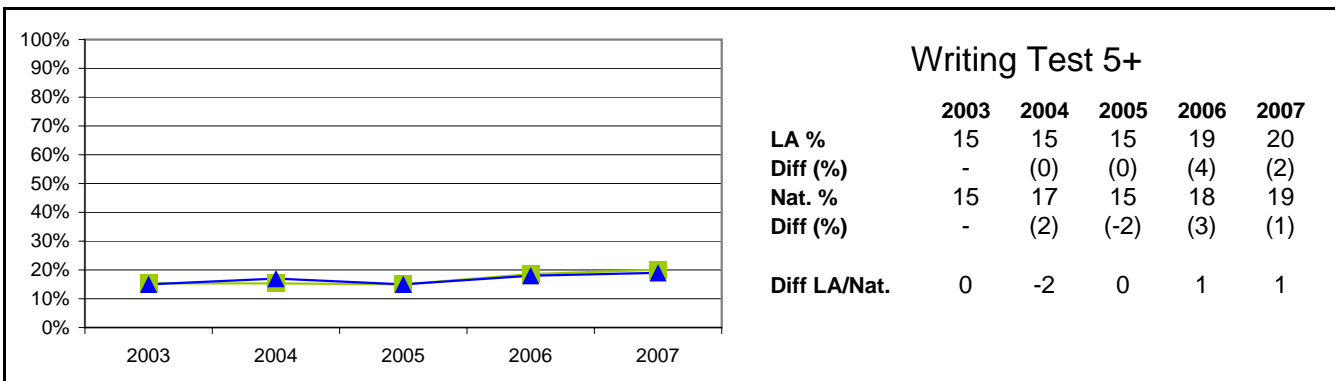
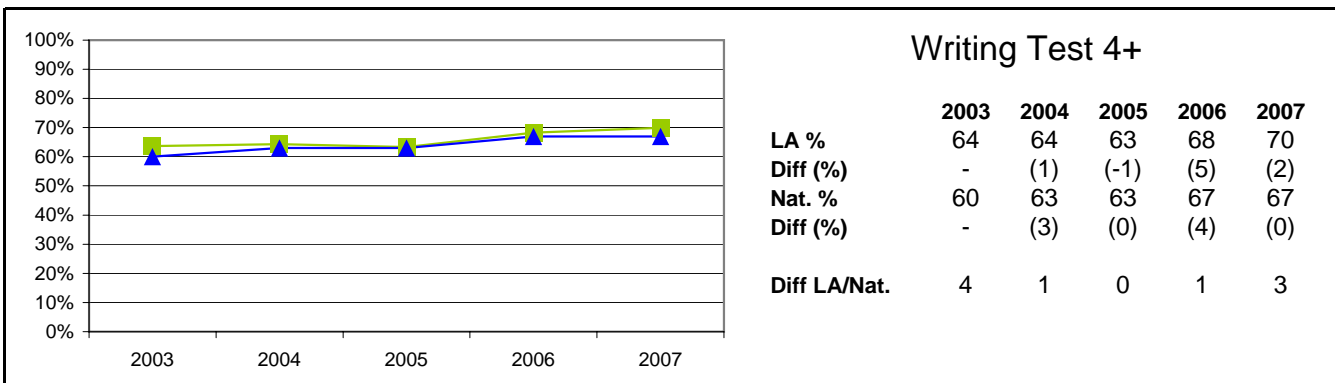
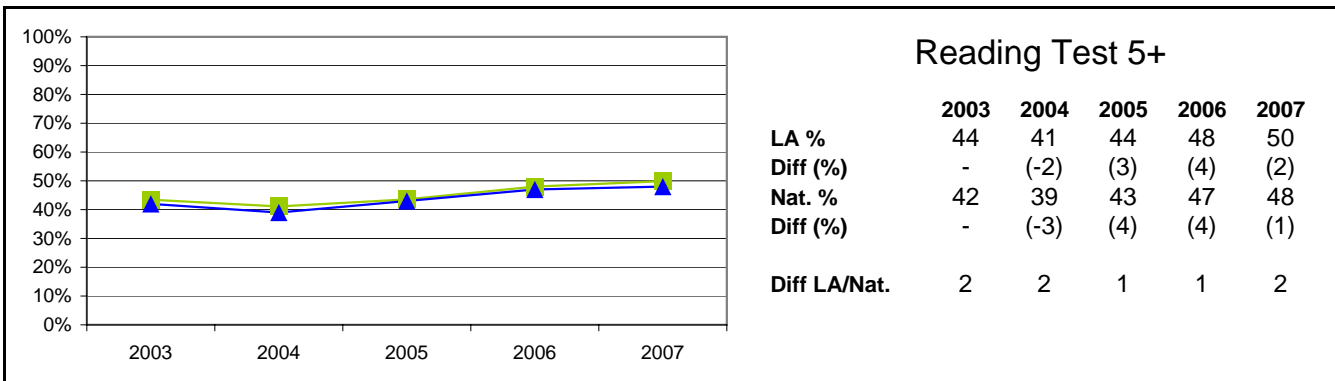
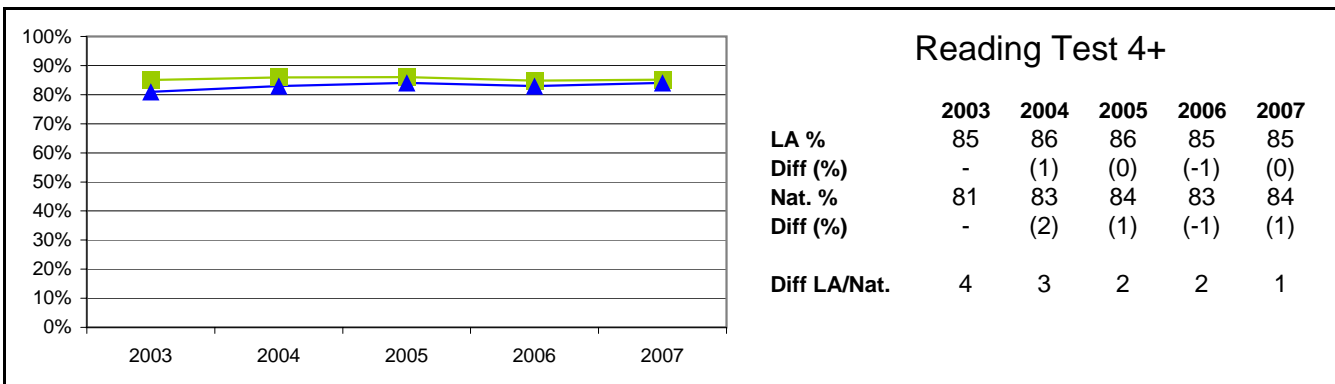


Most figures derived from August 2007 DCSF information.

National Figures have been obtained from the DCSF Statistical First Release SFR24/2007. (National Curriculum Assessments at Key Stage 2 in England, 2007 (Provisional) Tables).

Notes: LA data for each year relates to all schools (including special schools and the PRU). National data for each year relates to all schools (including special schools) but not PRUs (except 2007).

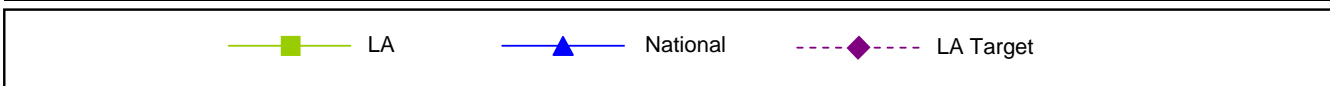
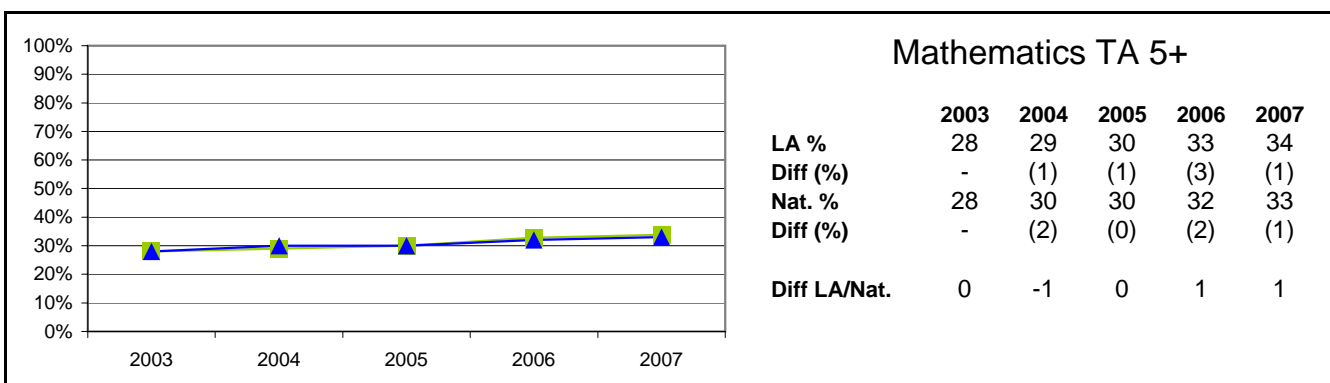
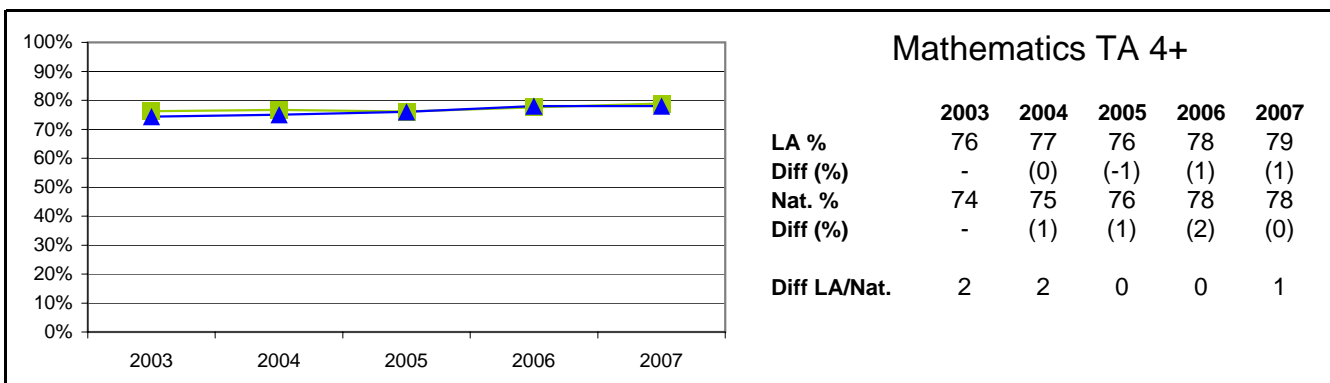
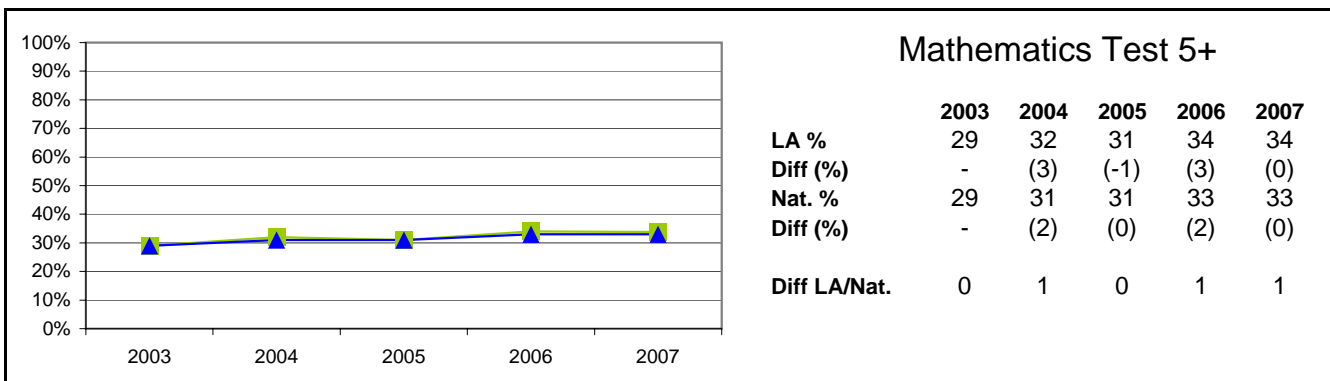
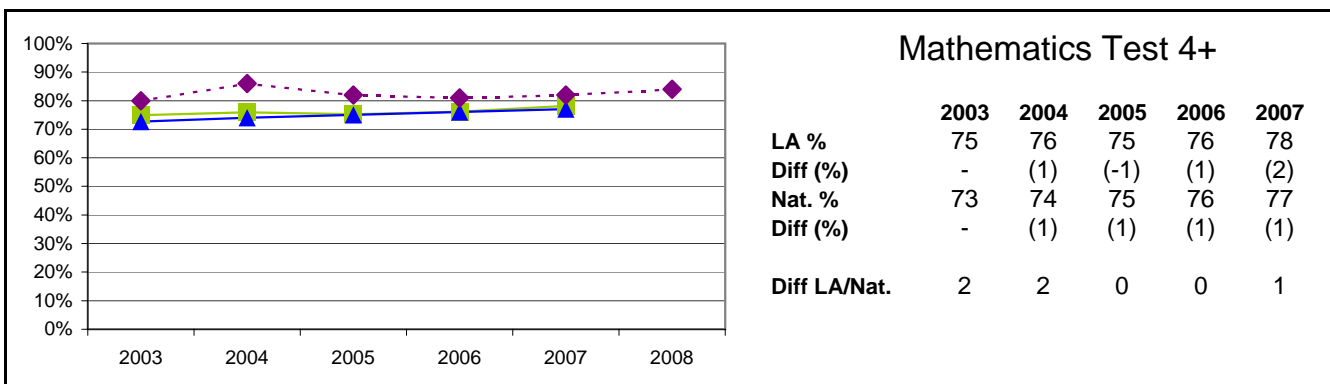
Key Stage Two Results 2003 - 2007: Reading and Writing Tests Percentages at Levels 4+ & 5+ 855 Leicestershire



Most figures derived from August 2007 DCSF information.
 National Figures have been obtained from the DCSF Statistical First Release SFR24/2007. (National Curriculum Assessments at Key Stage 2 in England, 2007 (Provisional) Tables).
Notes: LA data for each year relates to all schools (including special schools and the PRU). National data for each year relates to all schools (including special schools) but not PRUs (except 2007).

Key Stage Two Results 2003 - 2007: Mathematics Test & TA, Percentages at Levels 4+ & 5+

855 Leicestershire



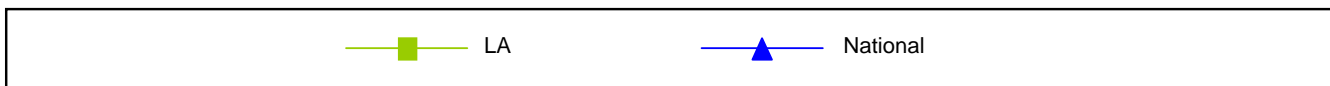
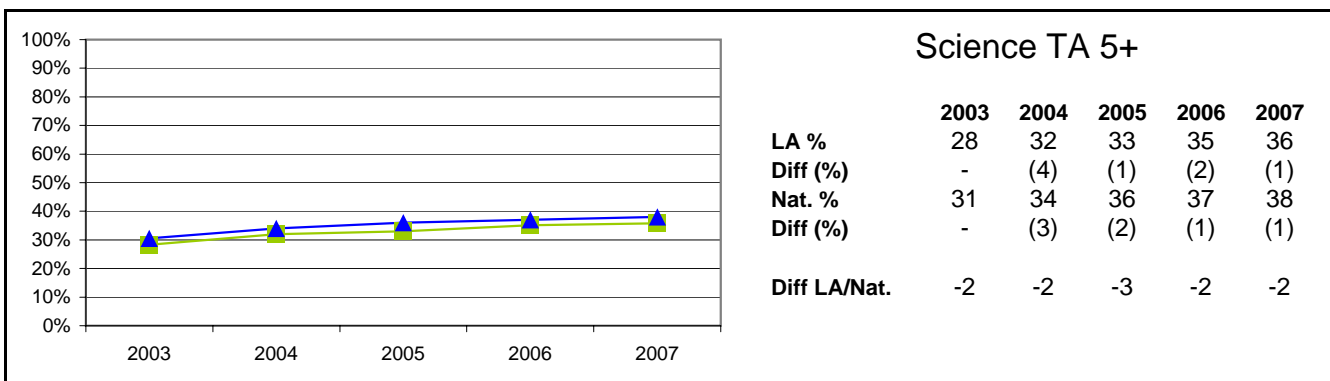
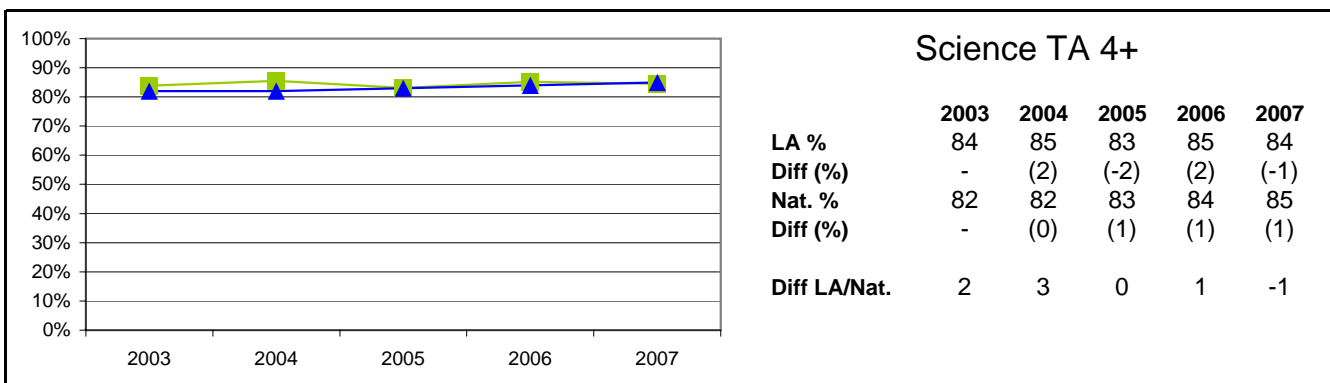
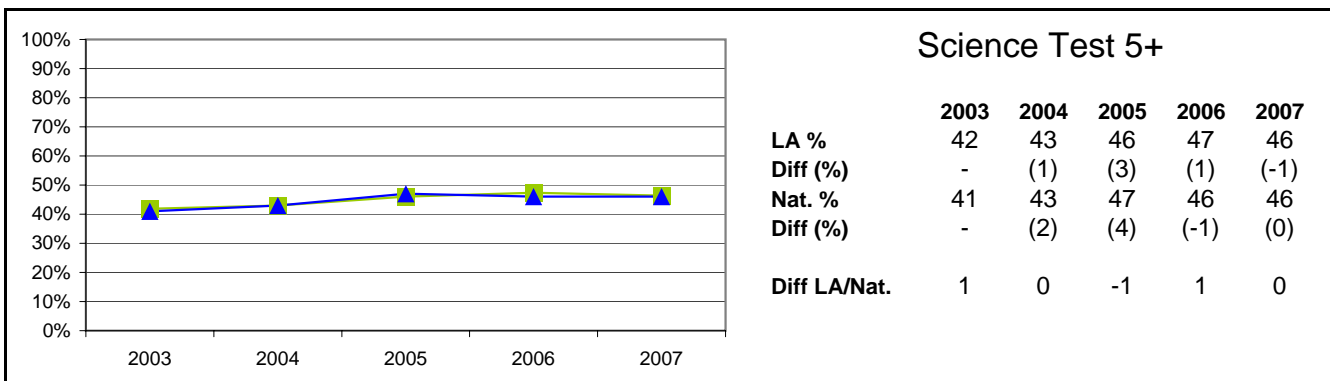
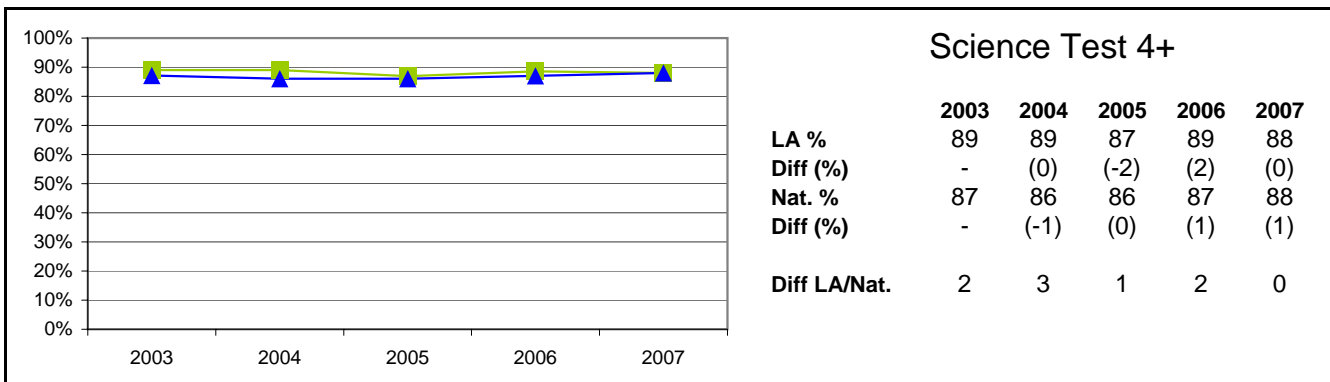
Most figures derived from August 2007 DCSF information.

National Figures have been obtained from the DCSF Statistical First Release SFR24/2007. (National Curriculum Assessments at Key Stage 2 in England, 2007 (Provisional) Tables).

Notes: LA data for each year relates to all schools (including special schools and the PRU). National data for each year relates to all schools (including special schools but not PRUs (except 2007)).

Key Stage Two Results 2003 - 2007: Science Test & TA, Percentages at Levels 4+ & 5+

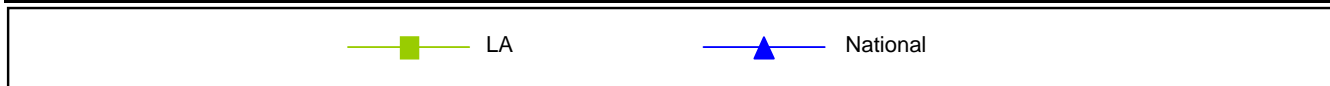
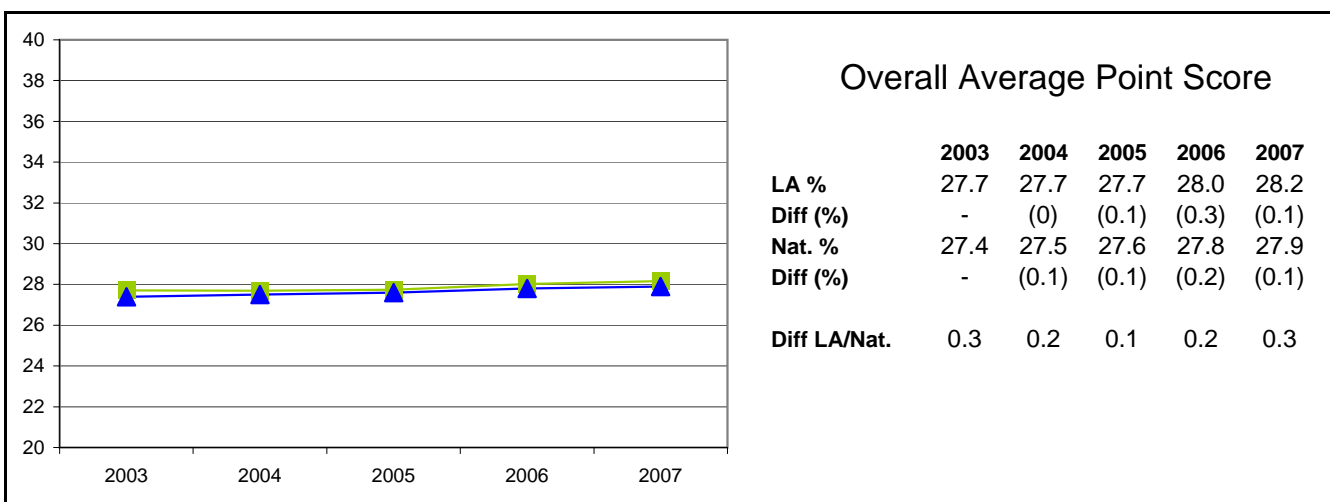
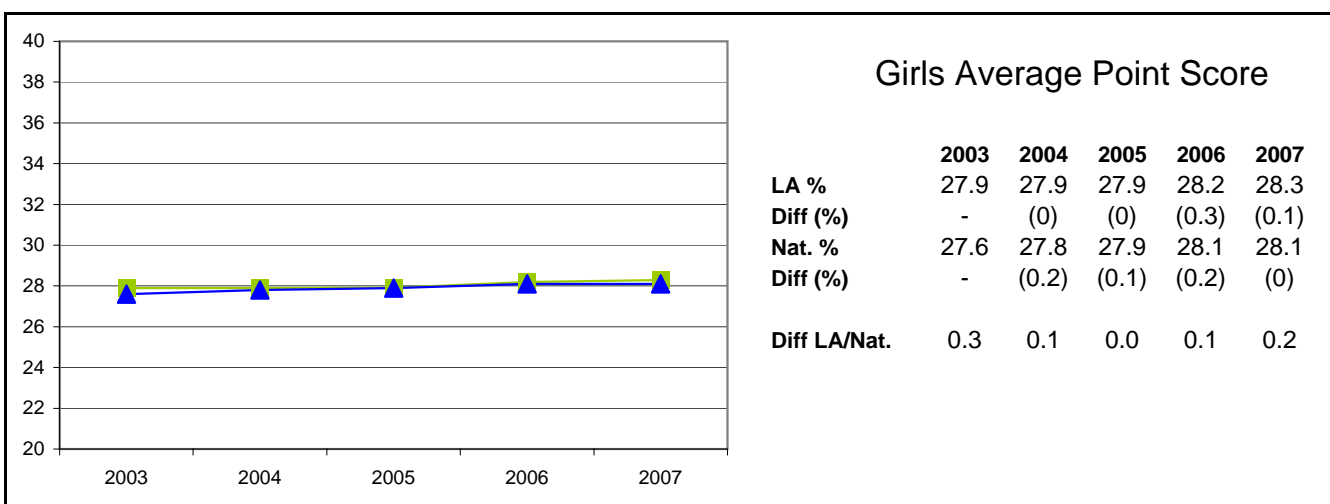
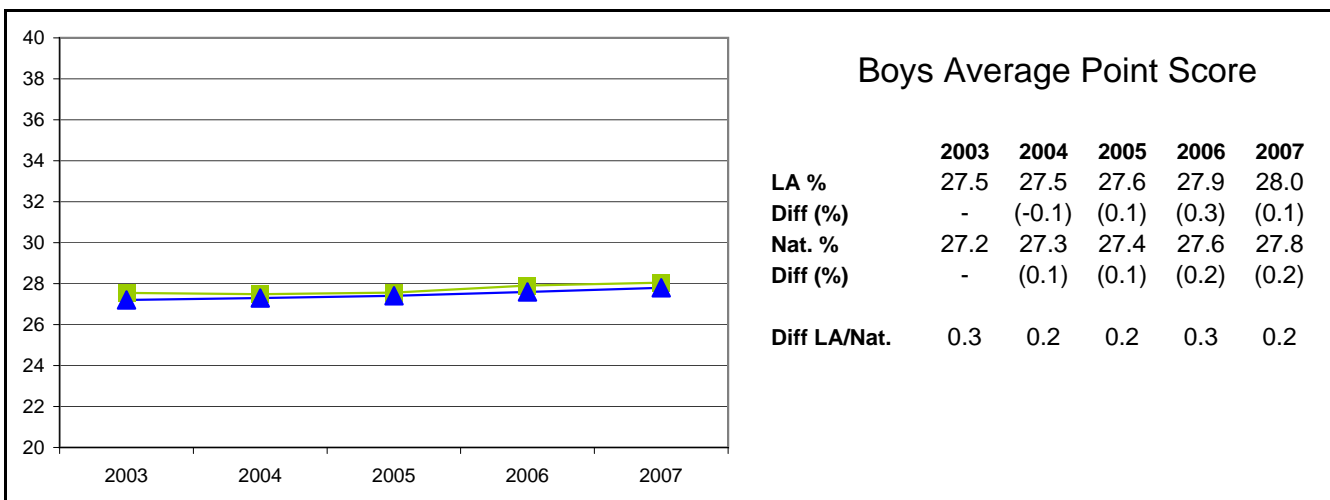
855 Leicestershire



Most figures derived from August 2007 DCSF information.
 National Figures have been obtained from the DCSF Statistical First Release SFR24/2007. (National Curriculum Assessments at Key Stage 2 in England, 2007 (Provisional) Tables).
Notes: LA data for each year relates to all schools (including special schools and the PRU). National data for each year relates to all schools (including special schools) but not PRUs (except 2007).

Key Stage Two Results 2003 - 2007: Average Point Score

855 Leicestershire



Most figures derived from August 2007DCSF information.

National Figures have been obtained from the DCSF Statistical First Release SFR24/2007. (National Curriculum Assessments at Key Stage 2 in England, 2007 (Provisional) Tables).

Notes: LA data for each year relates to all schools (including special schools and the PRU). National data for each year relates to all schools (including special schools but not PRUs (except 2007)).

Key Stage Two Results 2003 - 2007: Pupil Numbers (Gender & Ethnicity)

Gender	LA				
	2003	2004	2005	2006	2007
Boys	4,008	3,875	3,836	3,889	3,725
Girls	3,769	3,656	3,664	3,580	3,549
All	7,777	7,531	7,500	7,469	7,274

Ethnicity	LA				
	2003	2004	2005	2006	2007
White British	6,527	6,449	6,536	6,505	6,270
Irish	18	11	18	19	15
Any other White background	111	95	94	117	117
Total White	6,656	6,555	6,649	6,642	6,402
White and Black African	8	11	9	5	13
White and Black Caribbean	41	45	53	62	65
White and Asian	36	47	43	50	67
Any other Mixed background	33	49	40	32	59
Total Mixed	118	152	145	149	204
Indian	315	329	339	324	355
Pakistani	6	19	23	21	20
Bangladeshi	28	32	30	37	34
Any other Asian background	23	39	24	35	35
Total Asian	372	419	416	417	444
Black Caribbean	5	6	13	9	5
Black African	4	9	9	7	22
Any other Black background	2	3	1	4	3
Total Black	11	18	23	20	30
Chinese	15	25	17	26	26
Any other ethnic group	16	17	13	16	24
Unclassified	589	345	237	199	144
All pupils	7,777	7,531	7,500	7,469	7,274

Note:

Data relates to KS2 cohort only

Most figures derived from August 2007 DCSF information.

Notes: LA data for each year relates to all schools (including special schools and the PRU).

Key Stage 2 Results 2003 - 2007: Historical Gender Analysis, Level 4+, 5+ & APS

855 Leicestershire

English

Boys	LA					National				
	2003	2004	2005	2006	2007	2003	2004	2005	2006	2007
Level	2003	2004	2005	2006	2007	2003	2004	2005	2006	2007
4	74%	75%	75%	77%	79%	70%	72%	74%	74%	76%
5	21%	21%	20%	27%	30%	21%	21%	21%	26%	28%
APS	26.3	26.3	26.4	26.9	27.3	-	-	26.2	26.6	26.9

Girls	LA					National				
	2003	2004	2005	2006	2007	2003	2004	2005	2006	2007
Level	2003	2004	2005	2006	2007	2003	2004	2005	2006	2007
4	85%	85%	85%	86%	86%	81%	83%	84%	85%	85%
5	34%	33%	33%	40%	41%	33%	33%	33%	39%	39%
APS	28.0	27.9	27.9	28.4	28.6	-	-	27.8	28.3	28.3

Gender Gap	LA					National				
	2003	2004	2005	2006	2007	2003	2004	2005	2006	2007
Level	2003	2004	2005	2006	2007	2003	2004	2005	2006	2007
4	-11%	-10%	-10%	-9%	-7%	-11%	-11%	-10%	-11%	-9%
5	-13%	-12%	-12%	-13%	-11%	-12%	-12%	-12%	-13%	-11%
APS	-1.7	-1.5	-1.5	-1.5	-1.2	-	-	-1.6	-1.7	-1.4

Reading

Boys	LA					National				
	2003	2004	2005	2006	2007	2003	2004	2005	2006	2007
Level	2003	2004	2005	2006	2007	2003	2004	2005	2006	2007
4	82%	83%	84%	82%	83%	78%	79%	82%	79%	81%
5	39%	36%	39%	42%	46%	38%	33%	39%	41%	44%
APS	27.9	27.7	27.9	28.0	28.5	-	-	-	-	-

Girls	LA					National				
	2003	2004	2005	2006	2007	2003	2004	2005	2006	2007
Level	2003	2004	2005	2006	2007	2003	2004	2005	2006	2007
4	88%	89%	89%	88%	88%	84%	87%	87%	87%	87%
5	48%	48%	49%	54%	54%	47%	46%	47%	53%	52%
APS	29.1	29.0	29.1	29.3	29.4	-	-	-	-	-

Gender Gap	LA					National				
	2003	2004	2005	2006	2007	2003	2004	2005	2006	2007
Level	2003	2004	2005	2006	2007	2003	2004	2005	2006	2007
4	-6%	-7%	-5%	-7%	-5%	-6%	-8%	-5%	-8%	-6%
5	-9%	-12%	-10%	-12%	-7%	-9%	-13%	-8%	-12%	-8%
APS	-1.1	-1.3	-1.1	-1.3	-0.9	-	-	-	-	-

Writing

Boys	LA					National				
	2003	2004	2005	2006	2007	2003	2004	2005	2006	2007
Level	2003	2004	2005	2006	2007	2003	2004	2005	2006	2007
4	54%	58%	54%	61%	62%	52%	56%	55%	59%	60%
5	11%	12%	10%	14%	15%	11%	13%	10%	13%	15%
APS	24.5	24.7	24.4	25.1	25.4	-	-	-	-	-

Girls	LA					National				
	2003	2004	2005	2006	2007	2003	2004	2005	2006	2007
Level	2003	2004	2005	2006	2007	2003	2004	2005	2006	2007
4	74%	72%	73%	76%	78%	69%	71%	72%	75%	75%
5	20%	19%	21%	24%	26%	20%	21%	21%	23%	24%
APS	26.4	26.2	26.5	26.8	27.2	-	-	-	-	-

Gender Gap	LA					National				
	2003	2004	2005	2006	2007	2003	2004	2005	2006	2007
Level	2003	2004	2005	2006	2007	2003	2004	2005	2006	2007
4	-19%	-14%	-18%	-15%	-16%	-17%	-15%	-17%	-16%	-15%
5	-8%	-6%	-11%	-10%	-11%	-9%	-8%	-11%	-10%	-9%
APS	-2.0	-1.5	-2.0	-1.7	-1.8	-	-	-	-	-

Most figures derived from August 2007 DCSF information.

National Figures have been obtained from the DCSF Statistical First Release SFR24/2007. (National Curriculum Assessments at Key Stage 2 in England, 2007 (Provisional) Tables).

Notes: LA data for each year relates to all schools (including special schools and the PRU). National data for each year relates to all schools (including special schools) but not PRUs (except 2007).

Key Stage 2 Results 2003 - 2007: Historical Gender Analysis, Level 4+, 5+ & APS

855 Leicestershire

Mathematics

Boys	LA					National				
	2003	2004	2005	2006	2007	2003	2004	2005	2006	2007
Level	2003	2004	2005	2006	2007	2003	2004	2005	2006	2007
4	76%	76%	76%	78%	80%	73%	74%	76%	77%	78%
5	33%	35%	33%	36%	36%	32%	33%	33%	36%	35%
APS	27.4	27.4	27.3	27.6	27.8	-	-	27.2	27.4	27.5

Girls	LA					National				
	2003	2004	2005	2006	2007	2003	2004	2005	2006	2007
Level	2003	2004	2005	2006	2007	2003	2004	2005	2006	2007
4	74%	76%	74%	74%	76%	72%	74%	75%	75%	76%
5	25%	29%	29%	31%	32%	26%	29%	28%	31%	30%
APS	26.8	27.1	27.0	27.1	27.2	-	-	26.9	27.1	27.1

Gender Gap	LA					National				
	2003	2004	2005	2006	2007	2003	2004	2005	2006	2007
Level	2003	2004	2005	2006	2007	2003	2004	2005	2006	2007
4	3%	1%	2%	3%	4%	1%	0%	1%	2%	2%
5	8%	5%	5%	5%	4%	6%	4%	5%	5%	5%
APS	0.6	0.3	0.4	0.5	0.5	-	-	0.3	0.3	0.4

Science

Boys	LA					National				
	2003	2004	2005	2006	2007	2003	2004	2005	2006	2007
Level	2003	2004	2005	2006	2007	2003	2004	2005	2006	2007
4	90%	89%	87%	88%	88%	86%	86%	86%	86%	87%
5	42%	44%	48%	47%	46%	40%	43%	48%	45%	47%
APS	28.9	28.9	29.0	29.0	29.0	-	-	28.9	28.7	28.9

Girls	LA					National				
	2003	2004	2005	2006	2007	2003	2004	2005	2006	2007
Level	2003	2004	2005	2006	2007	2003	2004	2005	2006	2007
4	90%	89%	87%	89%	88%	87%	86%	87%	87%	88%
5	42%	43%	45%	48%	47%	41%	43%	46%	46%	46%
APS	28.9	28.8	28.9	29.1	29.1	-	-	28.9	28.9	29.0

Gender Gap	LA					National				
	2003	2004	2005	2006	2007	2003	2004	2005	2006	2007
Level	2003	2004	2005	2006	2007	2003	2004	2005	2006	2007
4	0%	0%	0%	-1%	0%	-1%	0%	-1%	-1%	-1%
5	0%	1%	3%	0%	-1%	-1%	0%	2%	-1%	1%
APS	0.0	0.1	0.2	-0.1	-0.1	-	-	0.0	-0.2	-0.1

 Gender gap less than national gender gap  Gender gap greater than national gender gap

Most figures derived from August 2007 DCSF information.

National Figures have been obtained from the DCSF Statistical First Release SFR24/2007. (National Curriculum Assessments at Key Stage 2 in England, 2007 (Provisional) Tables).

Notes: LA data for each year relates to all schools (including special schools and the PRU). National data for each year relates to all schools (including special schools) but not PRUs (except 2007).

Key Stage 2 Results 2003 - 2007 Ethnicity Analysis: English


855 Leicestershire


Percentage achieving Level 4+

Ethnicity	LA					National				
	2003	2004	2005	2006	2007	2003	2004	2005	2006	2007
White British	79%	79%	80%	81%	83%	76%	78%	80%	80%	-
Irish	86%	91%	83%	89%	87%	82%	82%	84%	82%	-
Any other White background	72%	74%	76%	81%	73%	72%	73%	75%	71%	-
Total White	79%	79%	80%	81%	82%	76%	78%	79%	80%	-
White and Black African	100%	82%	89%	100%	77%	73%	75%	77%	81%	-
White and Black Caribbean	84%	75%	77%	79%	75%	78%	79%	80%	77%	-
White and Asian	85%	92%	86%	86%	88%	82%	84%	85%	85%	-
Any other Mixed background	85%	90%	88%	88%	69%	79%	81%	81%	83%	-
Total Mixed	86%	86%	83%	84%	78%	77%	79%	80%	81%	-
Indian	83%	86%	84%	88%	89%	80%	83%	83%	85%	-
Pakistani	83%	84%	77%	81%	55%	61%	68%	68%	70%	-
Bangladeshi	50%	66%	70%	81%	68%	69%	72%	74%	75%	-
Any other Asian background	75%	82%	71%	83%	77%	76%	78%	78%	77%	-
Total Asian	80%	84%	82%	87%	85%	70%	75%	75%	76%	-
Black Caribbean	67%	83%	77%	89%	80%	68%	70%	72%	73%	-
Black African	80%	78%	78%	71%	64%	70%	72%	71%	72%	-
Any other Black background	67%	67%	0%	75%	100%	71%	72%	73%	73%	-
Total Black	71%	78%	74%	80%	70%	69%	71%	72%	72%	-
Chinese	89%	84%	82%	81%	92%	83%	83%	86%	86%	-
Any other ethnic group	75%	72%	86%	81%	75%	68%	70%	71%	69%	-
Unclassified	77%	77%	75%	79%	81%	70%	72%	75%	74%	-
All pupils	79%	80%	80%	82%	82%	75%	77%	79%	79%	-

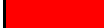
Differences

Ethnicity	LA vs. National				
	2003	2004	2005	2006	2007
White British	3%	1%	0%	1%	-
Irish	4%	9%	-1%	7%	-
Any other White background	0%	1%	1%	10%	-
Total White	3%	1%	1%	1%	-
White and Black African	27%	7%	12%	19%	-
White and Black Caribbean	6%	-4%	-3%	2%	-
White and Asian	3%	8%	1%	1%	-
Any other Mixed background	6%	9%	6%	5%	-
Total Mixed	9%	7%	3%	3%	-
Indian	3%	3%	1%	3%	-
Pakistani	22%	16%	9%	11%	-
Bangladeshi	-19%	-6%	-4%	6%	-
Any other Asian background	-1%	4%	-7%	6%	-
Total Asian	10%	9%	7%	11%	-
Black Caribbean	-1%	13%	5%	16%	-
Black African	10%	6%	7%	-1%	-
Any other Black background	-4%	-5%	-73%	2%	-
Total Black	2%	7%	2%	8%	-
Chinese	6%	1%	-4%	-5%	-
Any other ethnic group	7%	2%	15%	12%	-
Unclassified	7%	5%	0%	5%	-
All pupils	4%	3%	1%	3%	-

 Performance greater than the national average for the ethnic group

 Performance less than the national average for the ethnic group

 Attainment greater than the comparator figure

 Attainment less than the comparator figure

Figures derived from the most recent DCSF data sources in all cases.

Notes: LA data for each year relates to all schools (including special schools and the PRU). National data for each year relates to all schools (including special schools) but not PRUs (except 2007).

Key Stage 2 Results 2003 - 2007 Ethnicity Analysis: Mathematics


855 Leicestershire


Percentage achieving Level 4+


Ethnicity	LA					National				
	2003	2004	2005	2006	2007	2003	2004	2005	2006	2007
White British	75%	76%	76%	76%	78%	73%	75%	76%	77%	-
Irish	86%	100%	89%	89%	80%	78%	78%	80%	80%	-
Any other White background	66%	71%	67%	75%	71%	70%	70%	73%	71%	-
Total White	75%	76%	75%	76%	78%	73%	74%	76%	77%	-
White and Black African	88%	73%	89%	100%	69%	67%	69%	70%	75%	-
White and Black Caribbean	69%	73%	70%	71%	66%	73%	73%	74%	71%	-
White and Asian	72%	85%	77%	84%	87%	78%	80%	81%	83%	-
Any other Mixed background	76%	78%	85%	78%	75%	75%	76%	76%	77%	-
Total Mixed	73%	78%	77%	78%	75%	72%	74%	75%	76%	-
Indian	79%	81%	78%	82%	85%	77%	80%	80%	81%	-
Pakistani	33%	84%	64%	76%	65%	58%	61%	62%	64%	-
Bangladeshi	53%	63%	53%	66%	53%	64%	67%	69%	70%	-
Any other Asian background	64%	69%	67%	77%	80%	76%	79%	80%	76%	-
Total Asian	75%	79%	75%	80%	81%	67%	70%	71%	72%	-
Black Caribbean	67%	50%	62%	78%	80%	59%	61%	61%	62%	-
Black African	80%	78%	78%	57%	50%	64%	66%	64%	63%	-
Any other Black background	100%	67%	0%	50%	67%	62%	65%	65%	66%	-
Total Black	79%	67%	65%	65%	57%	62%	64%	63%	63%	-
Chinese	94%	96%	88%	81%	88%	89%	90%	91%	92%	-
Any other ethnic group	81%	83%	100%	88%	79%	71%	73%	72%	70%	-
Unclassified	70%	77%	74%	76%	69%	67%	69%	70%	70%	-
All pupils	75%	76%	75%	76%	78%	72%	74%	75%	75%	-

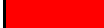
Differences

Ethnicity	LA vs. National				
	2003	2004	2005	2006	2007
White British	2%	1%	0%	-1%	-
Irish	8%	22%	9%	9%	-
Any other White background	-4%	1%	-6%	4%	-
Total White	2%	2%	-1%	-1%	-
White and Black African	21%	4%	19%	25%	-
White and Black Caribbean	-4%	0%	-4%	0%	-
White and Asian	-6%	5%	-4%	1%	-
Any other Mixed background	1%	2%	9%	1%	-
Total Mixed	1%	4%	2%	2%	-
Indian	2%	1%	-2%	1%	-
Pakistani	-25%	23%	2%	12%	-
Bangladeshi	-11%	-5%	-16%	-4%	-
Any other Asian background	-12%	-10%	-13%	1%	-
Total Asian	8%	9%	4%	8%	-
Black Caribbean	8%	-11%	1%	16%	-
Black African	16%	12%	14%	-6%	-
Any other Black background	38%	2%	-65%	-16%	-
Total Black	17%	3%	2%	2%	-
Chinese	5%	6%	-3%	-11%	-
Any other ethnic group	10%	10%	28%	18%	-
Unclassified	3%	8%	4%	6%	-
All pupils	3%	2%	0%	1%	-

 Performance greater than the national average for the ethnic group

 Performance less than the national average for the ethnic group

 Attainment greater than the comparator figure

 Attainment less than the comparator figure

Figures derived from the most recent DCSF data sources in all cases.

Notes: LA data for each year relates to all schools (including special schools and the PRU). National data for each year relates to all schools (including special schools) but not PRUs (except 2007).

Key Stage 2 Results 2003 - 2007 Ethnicity Analysis: Science


855 Leicestershire


Percentage achieving Level 4+


Ethnicity	LA					National				
	2003	2004	2005	2006	2007	2003	2004	2005	2006	2007
White British	90%	89%	88%	89%	88%	88%	87%	88%	88%	-
Irish	91%	91%	94%	100%	80%	90%	88%	89%	89%	-
Any other White background	79%	80%	82%	82%	79%	82%	81%	83%	79%	-
Total White	90%	89%	88%	89%	88%	87%	87%	87%	88%	-
White and Black African	100%	91%	89%	100%	77%	85%	84%	85%	86%	-
White and Black Caribbean	82%	82%	85%	84%	82%	86%	85%	85%	85%	-
White and Asian	87%	94%	93%	92%	93%	90%	89%	90%	90%	-
Any other Mixed background	94%	94%	95%	94%	83%	88%	88%	88%	88%	-
Total Mixed	88%	90%	90%	89%	85%	87%	86%	87%	87%	-
Indian	88%	86%	82%	88%	91%	88%	87%	87%	88%	-
Pakistani	83%	84%	64%	67%	70%	72%	73%	73%	73%	-
Bangladeshi	90%	78%	70%	74%	68%	77%	78%	79%	79%	-
Any other Asian background	86%	79%	71%	86%	83%	84%	85%	85%	82%	-
Total Asian	88%	85%	79%	86%	88%	80%	79%	80%	80%	-
Black Caribbean	100%	67%	77%	89%	100%	78%	78%	78%	79%	-
Black African	80%	100%	78%	57%	73%	79%	78%	77%	76%	-
Any other Black background	100%	67%	0%	75%	100%	80%	81%	79%	80%	-
Total Black	93%	83%	74%	75%	80%	79%	78%	78%	77%	-
Chinese	94%	100%	94%	81%	96%	91%	91%	92%	91%	-
Any other ethnic group	88%	72%	86%	94%	88%	80%	80%	80%	76%	-
Unclassified	90%	86%	86%	89%	85%	83%	82%	84%	82%	-
All pupils	89%	89%	87%	89%	88%	86%	86%	86%	86%	-

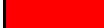
Differences

Ethnicity	LA vs. National				
	2003	2004	2005	2006	2007
White British	2%	2%	0%	1%	-
Irish	1%	3%	5%	11%	-
Any other White background	-3%	-1%	-1%	3%	-
Total White	3%	2%	1%	1%	-
White and Black African	15%	7%	4%	14%	-
White and Black Caribbean	-4%	-3%	0%	-1%	-
White and Asian	-3%	5%	3%	2%	-
Any other Mixed background	6%	6%	7%	6%	-
Total Mixed	1%	4%	3%	2%	-
Indian	0%	-1%	-5%	0%	-
Pakistani	11%	11%	-9%	-6%	-
Bangladeshi	13%	0%	-9%	-5%	-
Any other Asian background	2%	-6%	-14%	4%	-
Total Asian	8%	6%	-1%	6%	-
Black Caribbean	22%	-11%	-1%	10%	-
Black African	1%	22%	1%	-19%	-
Any other Black background	20%	-14%	-79%	-5%	-
Total Black	14%	5%	-4%	-2%	-
Chinese	3%	9%	2%	-10%	-
Any other ethnic group	8%	-8%	6%	18%	-
Unclassified	7%	4%	2%	7%	-
All pupils	3%	3%	1%	3%	-

 Performance greater than the national average for the ethnic group

 Performance less than the national average for the ethnic group

 Attainment greater than the comparator figure

 Attainment less than the comparator figure

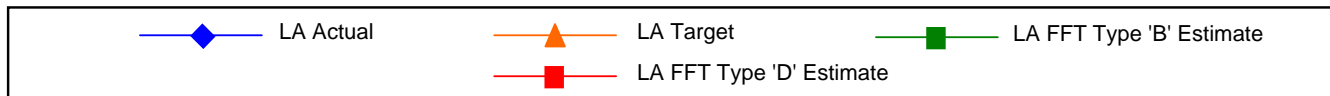
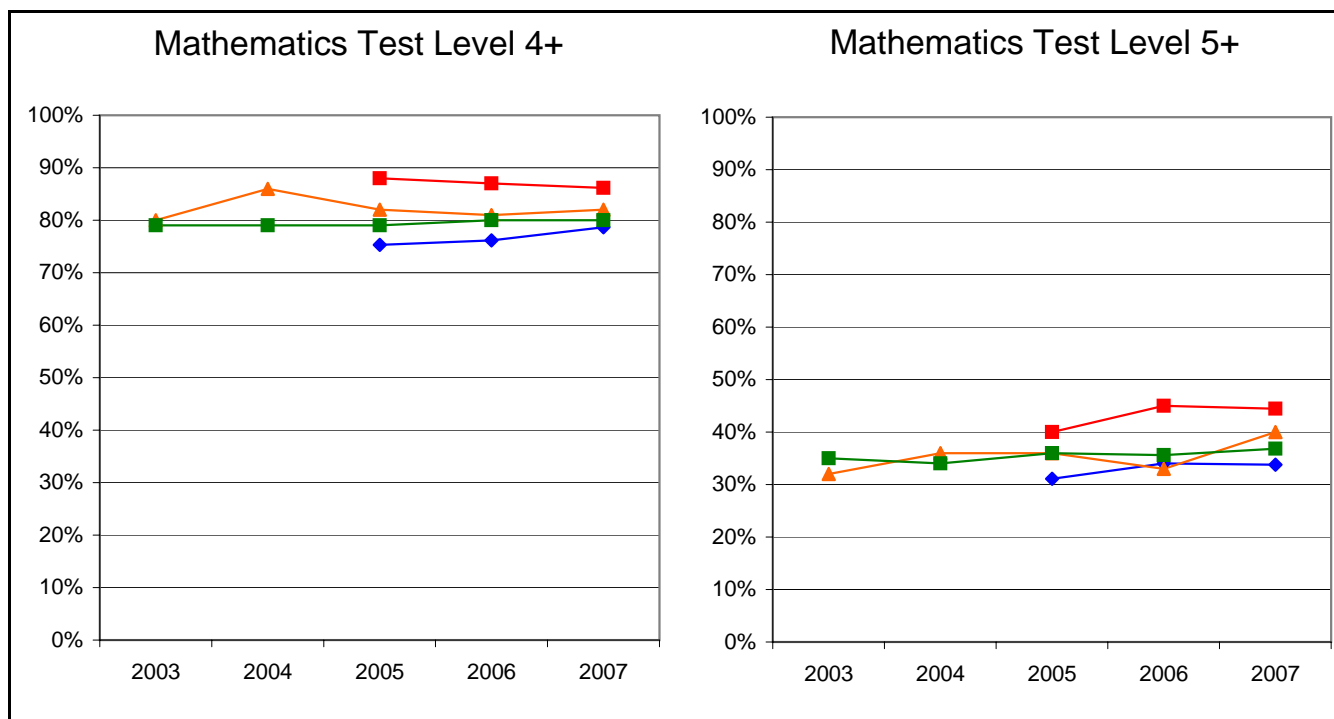
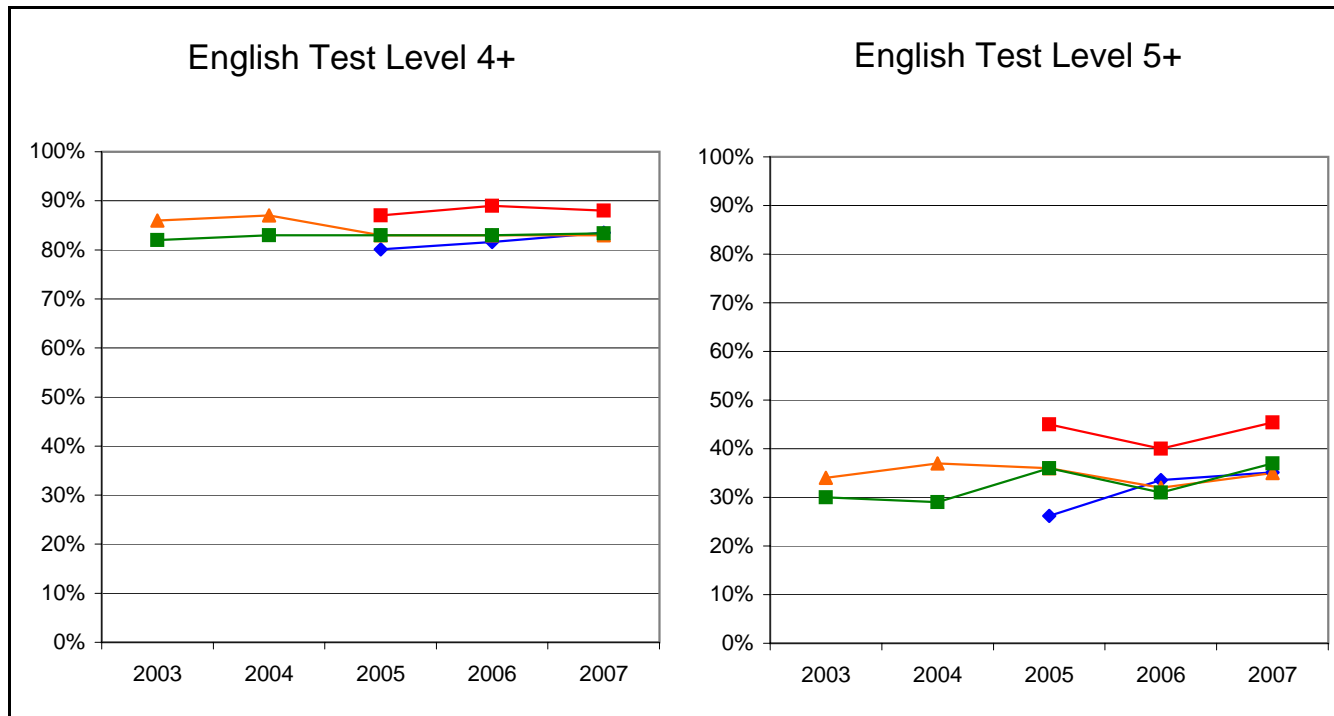
Figures derived from the most recent DCSF data sources in all cases.

Notes: LA data for each year relates to all schools (including special schools and the PRU). National data for each year relates to all schools (including special schools) but not PRUs (except 2007).

Key Stage 2 Results, Targets and FFT Estimates 2003 - 2007 Levels 4+ and 5+

855 Leicestershire

Graphs display a historical comparison of LA attainment against LA Targets and FFT Type 'B' and 'D' estimates



Notes:
 LA Targets based on EDP (2003 to 2004) and SaLTS (2005 onwards) submissions.
 FFT Type 'B' and 'D' data based on estimates as at September 2007.