

**Key Stage
Two
Officer Pack
2008**

Performance Team,
Knowledge Management, CYPS
Richard Gretton: 0116 305 6638
Janet Hood: 0116 305 6623

KEY STAGE TWO GRAPH PACK

Background

This report provides an overview of school level, local authority and national Key Stage Two attainment data. The purpose of the report is to provide basic attainment comparisons between the local and national situation and to include further analysis of attainment by gender and ethnicity.

The Key Stage Two Graph Pack includes the following contents:

- Breakdown of 2008 Key Stage Two attainment
- Headline contextual data for the 2008 cohort
- Key Stage Two Pupil number counts by Gender and Ethnicity between 2004 and 2008
- English Test Attainment and Teacher Assessment 4+ and 5+ 2004 to 2008
- Reading and Writing Test Attainment 4+ and 5+ 2004 to 2008
- Mathematics Test Attainment and Teacher Assessment 4+ and 5+ 2004 to 2008
- Science Test Attainment and Teacher Assessment 4+ and 5+ 2004 to 2008
- KS2 Average Point Scores by Gender 2004 to 2008
- Gender Analysis 4+, 5+ and APS 2004 to 2008 for English, Reading, Writing, Mathematics and Science
- Ethnicity Analysis 4+ 2004 to 2008 for English, Mathematics and Science
- FFT Type 'B'/'D' estimates, Statutory Targets and Actual Attainment comparisons for English and Mathematics for 4+ and 5+

Technical details

1. Key Stage Two attainment data is supplied to the LA by the DCSF, the latest LA data being made available on 5th September 2008. All the School level and Local Authority data are derived from this data set. As of this date, the overall completion rate for Leicestershire was 98.8% with English at 97.1%, Maths at 99.6% and Science at 99.7%
To allow analysis based on ethnicity the most recently available Spring School Census data has been matched into the data set. The data for 2008 at this stage of the academic year is classified as provisional.
2. The source of the National data for 2008 is the DCSF Statistical First Release SFR 19/2008 National Curriculum Assessments at Key Stage 2 in England, 2008 (Provisional). All historic national data has been obtained from a variety of DCSF attainment sources.
3. Included in the Graph Pack are sections on gender and ethnicity analysis. For gender analysis purposes we have highlighted where the gender gap is larger than the national average and for ethnic analysis purposes we have highlighted where headline performance is greater than or less than average national or local performance. No degree of significance is placed on the differences highlighted.
4. Also included in the analysis are FFT (Fischer Family Trust) Key Stage 2 Type 'B' and 'D' Estimates for 2004 to 2008 based on Key Stage One prior attainment (both test and teacher assessment data). FFT Type 'B' estimates are based upon individual pupils' prior attainment and gender adjusted to allow for the performance of 'similar' schools and Type 'D' estimates provide an indication of achievement that would be consistent with the progress made by students in schools with the highest value-added (top 25% of schools nationally) between Key Stage One and Key Stage Two.
5. Comparisons with 2007 are affected by various administrative changes to the 2008 tests that included the removal of borderlining i.e. the process of checking test scripts that fall just below level thresholds. *This change has been estimated to reduce the percentage achieving the expected level 5 and above by up to 0.9% in English, 0.2% in Mathematics and 0.6% in Science. Estimates of reductions at level 6 and above are 1.6% for English, 0.3% for Mathematics and 0.9% for Science.*

The table below shows what the maximum impact of borderlining on test result gains could have been over the previous four years.

		2004	2005	2006	2007
Level 4+	English	1.4%	1.3%	1.3%	1.2%
	Mathematics	0.2%	0.2%	0.2%	0.2%
	Science	0.5%	0.5%	0.4%	0.5%
Level 5+	English	2.4%	2.5%	2.6%	2.9%
	Mathematics	0.3%	0.3%	0.2%	0.4%
	Science	1.5%	1.5%	1.2%	1.5%

Enquiries

Please contact the following people listed below if you wish to make any comments regarding this report or if you have any queries regarding the analysis.

As this analysis is very much developmental we would welcome any comments so that the product can improve and evolve.

Report contacts:

<p>Janet Hood Analyst Performance Team, Knowledge Management Children & Young People's Service Leicestershire County Council</p> <p>Tel No: 0116 305 6623 E-Mail: jhood@leics.gov.uk</p>	<p>Richard Gretton Statistics Manager Performance Team, Knowledge Management Children & Young People's Service Leicestershire County Council</p> <p>Tel No: 0116 305 6638 E-Mail: rgretton@leics.gov.uk</p>
<p>Lea Parsons Senior Analyst Performance Team, Knowledge Management Children & Young People's Service Leicestershire County Council</p> <p>Tel No: 0116 305 6481 E-Mail: lparsons@leics.gov.uk</p>	<p>Lynda Smith School Development Adviser – Performance Data School Improvement & Performance Service Children & Young People's Service Leicestershire County Council</p> <p>Tel No: 0116 305 7412 E-Mail: lysmith@leics.gov.uk</p>

Headline commentary:

Across all subjects, at all attainment levels, Leicestershire has performed better (by 1% or 2%) than Nationally – except for Science at 5+ where for Leicestershire and Nationally the figure is virtually the same, 44.5% Leicestershire and 44.0% Nationally. This reflects a decrease in 5+ Science of 2.1% for Leicestershire and a 3% decrease nationally. In Mathematics Leicestershire has mirrored the national trends with a 1% increase at 4+ and a 1% decrease at 5+, Leicestershire figures for 4+ being 80% and 33% at 5+. Nationally English at 4+ has risen to 81% with Leicestershire staying steady at 83%

Attainment at 4+ in Leicestershire is consistent, overall steady progress nationally at 4+ is being made in English, Mathematics and Science, and over the last three years major improvements at 4+ Mathematics have been made and sustained.

Gender differences in Writing at 4+ and 5+ continue to be wide in favour of girls, as they continue to outperform boys. Boys' performance in Mathematics is continuing to outperform girls by a larger rate at both 4+ and 5+. Locally results are showing the gender gaps in each subject are narrower than at the national level except for maths, where boys exceed girls' performance by a greater margin than nationally.

Leicestershire and National Key Stage 2 Performance (2001 to 2008)

	Year	4+			5+			APS	CVA	VA	
		English	Maths	Science	English	Maths	Science				
Leicestershire	2008	83	80	89	30	33	44	28.1	-	-	Provisional as at 5/09/08
National	2008	81	78	88	29	31	44	27.8	-	-	
Leicestershire	2007	83	79	89	36	34	47	28.2	99.8	-	
National	2007	80	77	88	34	32	46	27.9	100.0	-	
Leicestershire	2006	82	76	89	34	34	47	28.0	-	99.7	
National	2006	79	76	87	32	33	46	27.8	-	99.8	
Leicestershire	2005	80	75	87	26	31	46	27.8	-	100.1	
National	2005	79	75	86	27	31	47	27.6	-	100.2	
Leicestershire	2004	80	76	89	27	32	43	27.7	-	99.9	
National	2004	78	74	86	27	31	43	27.5	-	100.0	
Leicestershire	2003	79	75	89	27	29	42	27.7	-	99.9	
National	2003	75	73	87	27	29	41	27.4	-	99.9	
Leicestershire	2002	78	75	89	30	29	38	28.0	-	-	
National	2002	75	73	86	29	28	38	-	-	-	
Leicestershire	2001	78	73	89	29	26	35	28.0	-	-	
National	2001	75	71	87	29	25	34	-	-	-	

Leicestershire's Key Stage 2 Performance (Rankings) against all LAs and Statistical Neighbour LAs (1 = highest ranked, 150 = lowest ranked)

* = Provisional as at 25/072008

	Year	4+			5+			APS	CVA	VA	LAs
		English	Maths	Science	English	Maths	Science				
*National	2008	37	40	45	47	36	63	41	-	-	150
*New CS Stat. N'bours	2008	3	5	5	5	3	6	4	-	-	11
National	2007	31	39	39	35	36	64	38	105	-	150
New CS Stat. N'bours	2007	4	3	8	5	4	7	6	5	-	11
National	2006	28	62	23	42	40	52	45	-	90	150
New CS Stat. N'bours	2006	4	8	5	6	4	8	6	-	5	11
Stat. N'bours	2006	2	7	3	3	5	6	4	-	4	11
National	2005	49	66	55	68	51	75	44	-	106	150
New CS Stat. N'bours	2005	6	8	9	7	6	11	6	-	7	11
Stat. N'bours	2005	4	8	9	7	5	10	5	-	6	11
National	2004	34	43	15	52	43	58	46	-	88	150
Stat. N'bours	2004	2	4	1	6	4	9	4	-	4	11
National	2003	28	44	32	59	61	48	33	-	73	150
Stat. N'bours	2003	2	4	4	7	4	7	3	-	6	11
National	2002	31	41	23	36	33	56	-	-	-	150
Stat. N'bours	2002	2	2	2	3	2	7	-	-	-	11
National	2001	31	42	37	46	42	43	-	-	-	150
Stat. N'bours	2001	2	2	3	2	2	3	-	-	-	11

Notes: New CS Stat. N'bours (New Children Services Statistical Neighbours) relates to the new set of Statistical Neighbours issued in March 2007 by the DCSF following the revision of the previous Ofsted model to enable Children's Services Performance comparisons. "Stat. N'bours" relates to the previous Ofsted Statistical Neighbours that formed the basis of benchmarking comparisons prior to 2006.

The most recent ethnic LA against National comparisons available relate to the 2007 Key Stage Two attainment. These highlight that performance in English, Mathematics and Science is steady across the ethnic groups – with similarly under performing groups across all subjects. It is noticeable that the White British cohort, which represents approximately 86% of the Key Stage Two cohort, only just outperforms the national average for the ethnic group in English, Mathematics and Science at 4+. Where greater differences are shown this is in ethnic groups with small cohorts, where a single pupil's result will have a greater impact

In relation to FFT estimates, Leicestershire in 2008 achieved performance which was very close to the FFT Type 'B' estimates at 4+; a clearer differential exists at 5+ with the LA below FFT B. At both 4+ and 5+ significant differences are observed against the Type 'D' FFT estimates. 2008 FFT Type 'D' estimates are higher than LA actual figures for English and Mathematics across both 4+ and 5+. LA English at 5+ equals 30% FFT D is 45%, LA English at 4+ equals 84% FFT D is 88%, Mathematics at 4+ equals 80% FFT D is 86% and Mathematics at 5+ equals 33% FFT D is 43%

Subject commentary:

English

English remains Leicestershire's strongest subject when ranked against the performance in Mathematics and Science of other Local Authorities in England. Relative Performance though declines for the 5+ attainment measure. Leicestershire's performance when judged in a national context in relation to gender shows both boys and girls at 4+ is 3% higher than the national average.

In Leicestershire and nationally the gender gap remained 2% at 4+, in favour of girls. Ethnic group LA performance is above national comparators for two thirds of all ethnic groups but the trend is a narrowing differential.

Reading

Some improvements in relation to boys and girls reading were made this year both at LA and Nationally. At 4+ a 1% increase occurred locally compared to a 2% national increase. Girls' performance in Leicestershire increased by 2% across both 4+ and 5+ since last year, mirroring the national picture. Boys' performance in Leicestershire is continuing to improve and outperforms National figures. At 4+ LA boys achieved 86%; nationally this figure is 83%

Overall Leicestershire continues to out-perform the national averages

Writing

The gender gap across this subject is wide in favour of girls although the gap in performance is getting narrower. Leicestershire across both genders continues to outperform the 4+ national results when the subject is considered overall. The LA and National gender gap is smaller than in 2007.

Mathematics

LA boys' strong performance has been maintained again this year. Leicestershire's boys performed above the national average. Girls' performance in Leicestershire has improved by 1% at 4+ compared to a 2% improvement nationally. 5+ girls' attainment virtually reflected the national pattern, girls showed a 3% decrease both nationally and locally.

Girls in Leicestershire continue to be outperformed by boys. Mathematics is a subject where boy's performance on a national scale has been stronger than girls over the last two years.

Science

Performance across the genders is only just higher than the national performance when Average Point Score is being considered. Attainment in this subject when judged at a national scale is Leicestershire's weakest in comparison to English and Mathematics. This year a 2% decline occurred at 5+ for boys – nationally the decrease was 3%. In 2007 LA boys performance was better than girls, this is not the case for 2008.

Key Stage Two Results 2008: Summary

855 Leicestershire

Boys	Other	1	2	3	4	5	6	Level 4 & above	Level 5 & above
Reading Test	7	0	0	7	40	46	-	86%	46%
Writing Test	6	0	0	32	46	16	-	62%	16%
English Test	6	0	0	15	55	24	-	79%	24%
Teacher Assessment	1	1	4	17	53	25	0	77%	25%
Maths Test	4	0	1	14	44	37	-	81%	37%
Teacher Assessment	0	1	3	15	42	38	0	81%	39%
Science Test	2	0	0	8	45	44	-	89%	44%
Teacher Assessment	0	0	1	12	48	38	0	86%	38%

Girls	Other	1	2	3	4	5	6	Level 4 & above	Level 5 & above
Reading Test	4	0	0	5	35	56	-	91%	56%
Writing Test	3	0	0	22	50	24	-	75%	24%
English Test	3	0	0	8	51	37	-	88%	37%
Teacher Assessment	0	0	2	12	50	36	0	85%	36%
Maths Test	4	0	1	17	50	29	-	78%	29%
Teacher Assessment	0	1	3	16	48	32	0	80%	32%
Science Test	2	0	0	8	45	45	-	89%	45%
Teacher Assessment	0	0	1	12	50	36	0	86%	36%

Boys & Girls	Other	1	2	3	4	5	6	Level 4 & above	Level 5 & above
Reading Test	6	0	0	6	38	51	-	88%	51%
Writing Test	5	0	0	27	48	20	-	68%	20%
English Test	5	0	0	12	53	30	-	84%	30%
Teacher Assessment	0	1	3	14	51	30	0	81%	30%
Maths Test	4	0	1	15	47	33	-	80%	33%
Teacher Assessment	0	1	3	15	45	35	0	81%	36%
Science Test	2	0	0	8	45	45	-	89%	45%
Teacher Assessment	0	0	1	12	49	37	0	86%	37%

		Average Level	Average Point Score
Boys	English Test	4.5	26.9
	Mathematics Test	4.7	27.9
	Science Test	4.8	28.9
Girls	English Test	4.7	28.4
	Mathematics Test	4.5	27.2
	Science Test	4.8	29.0
Boys & Girls	English Test	4.6	27.6
	Mathematics Test	4.6	27.6
	Science Test	4.8	29.0

Notes

Data based on DCSF datafeed August 2008

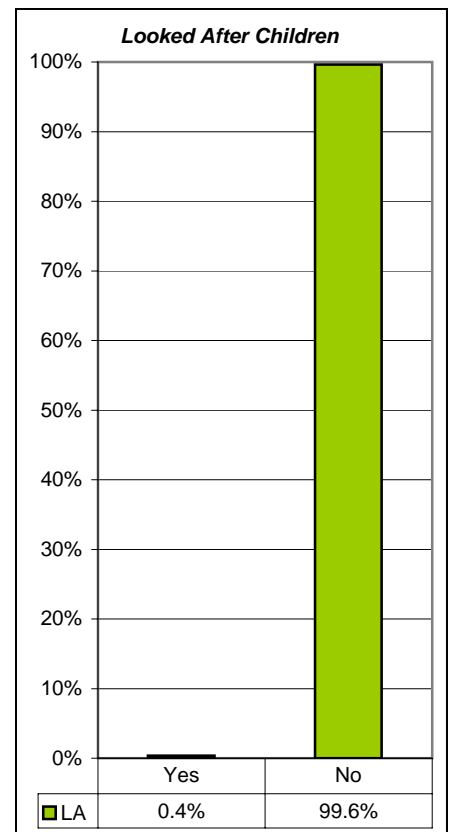
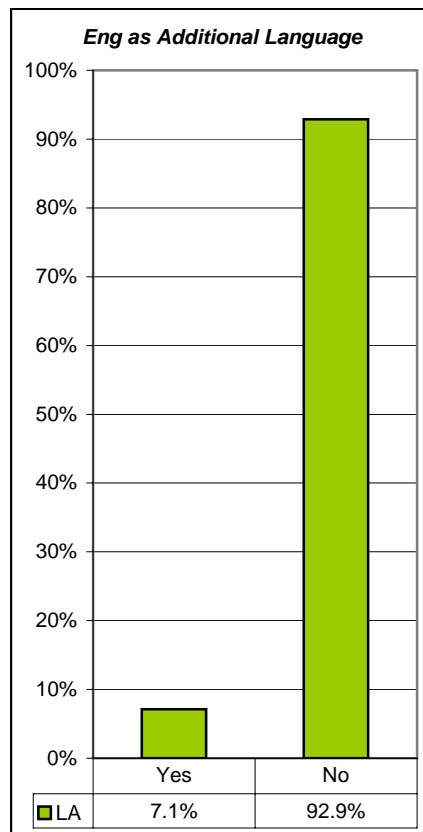
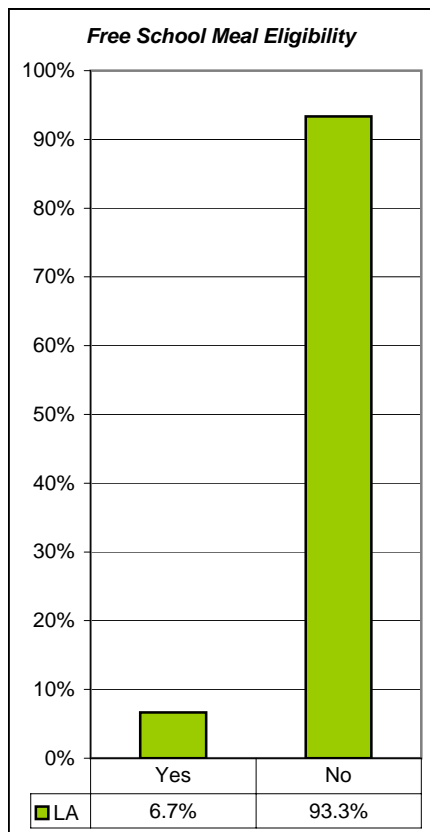
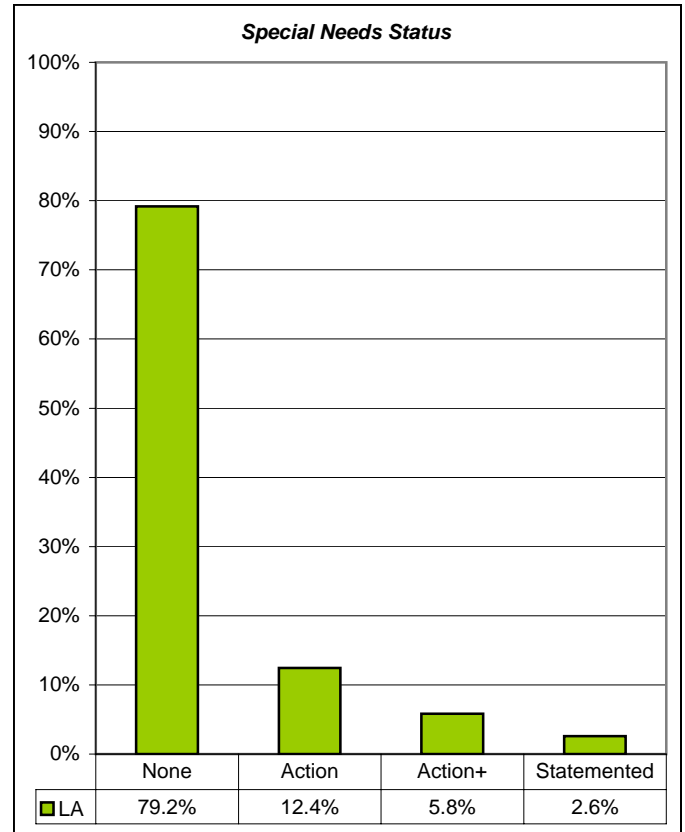
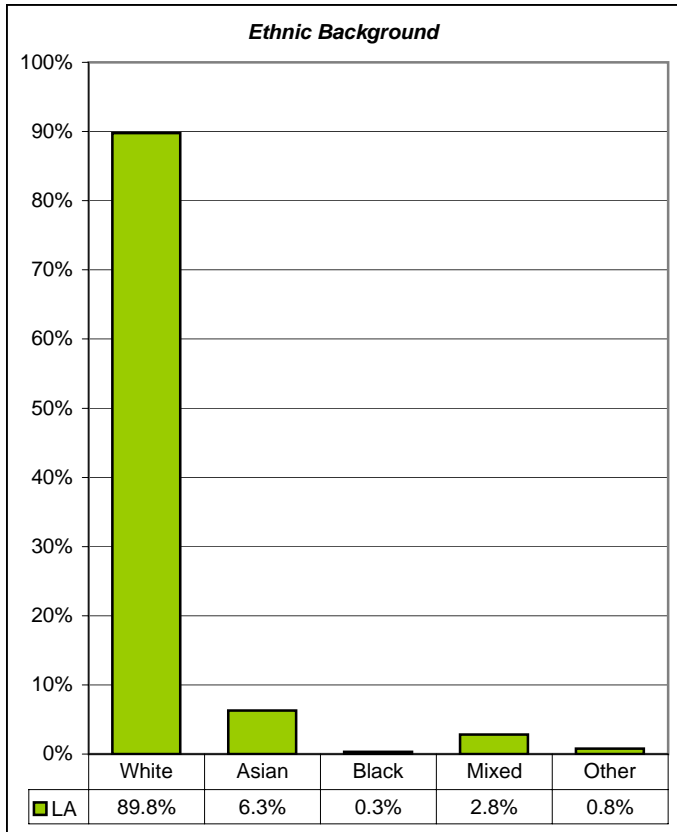
'Other' refers to pupils who were absent, disapplied, took the statutory tests but failed to register a level, those working at a level below that assessed by the tests and those whose test papers were lost.

Pupils achieving a grade "B" or "N" have been scored as gaining a Level 2 or 15 points.

Average Level reflects the true fine grading of point scores, e.g. 27 points represents Level 4.5 and 33 points represents Level 5.5 etc

Key Stage Two Results 2008: Contextual Data

855 Leicestershire



Note:
 The contextual data relates to the Key Stage 2 Cohort only.
 Ethnic Background does not include Refused and Information Not Obtained Classified pupils.

Key Stage Two Results 2004 - 2008: Pupil Numbers (Gender & Ethnicity)

855 Leicestershire

Gender	LA				
	2004	2005	2006	2007	2008
Boys	3,835	3,835	3,892	3,725	3,698
Girls	3,674	3,664	3,580	3,543	3,521
All	7,509	7,499	7,472	7,268	7,219

Ethnicity	LA				
	2004	2005	2006	2007	2008
White British	6,527	6,535	6,506	6,268	6,235
Irish	11	18	19	16	12
Any other White background	96	94	117	113	125
Total White	6,634	6,648	6,643	6,398	6,372
White and Black Caribbean	45	53	62	64	70
White and Black African	11	9	5	13	17
White and Asian	48	43	50	68	51
Any other Mixed background	49	40	32	59	61
Total Mixed	153	145	149	204	199
Indian	337	339	325	354	359
Pakistani	19	23	21	20	19
Bangladeshi	32	30	38	33	41
Any other Asian background	39	24	35	34	27
Total Asian	427	416	419	441	446
Black Caribbean	6	13	9	5	7
Black African	9	9	7	23	12
Any other Black background	3	1	4	3	4
Total Black	18	23	20	31	23
Chinese	25	17	26	26	27
Any other ethnic group	18	13	16	24	29
Unclassified	234	237	199	144	123
All pupils	7,509	7,499	7,472	7,268	7,219

Note:

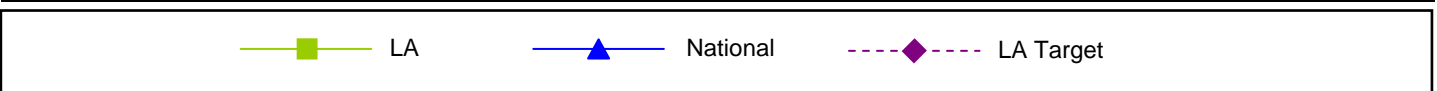
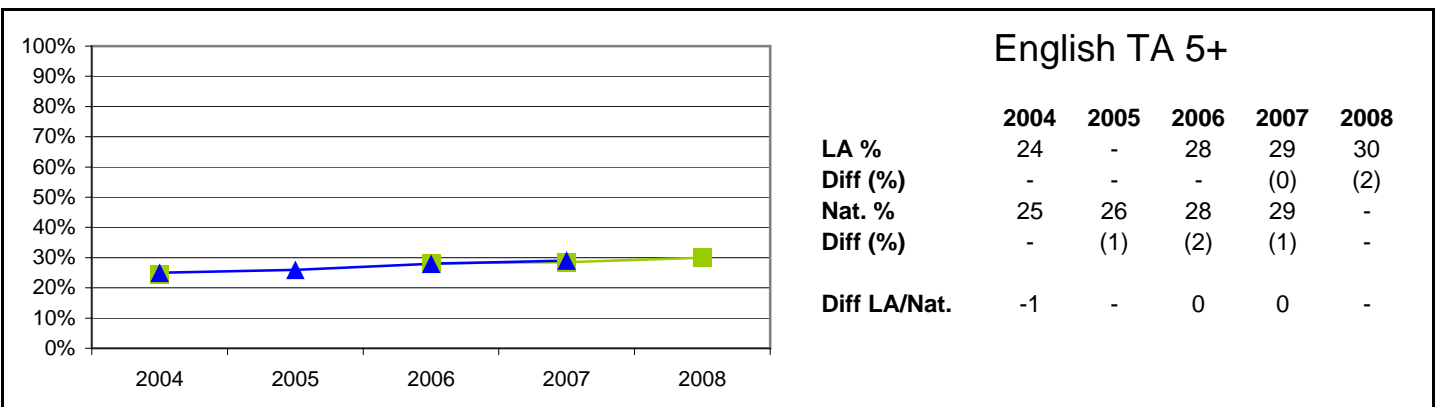
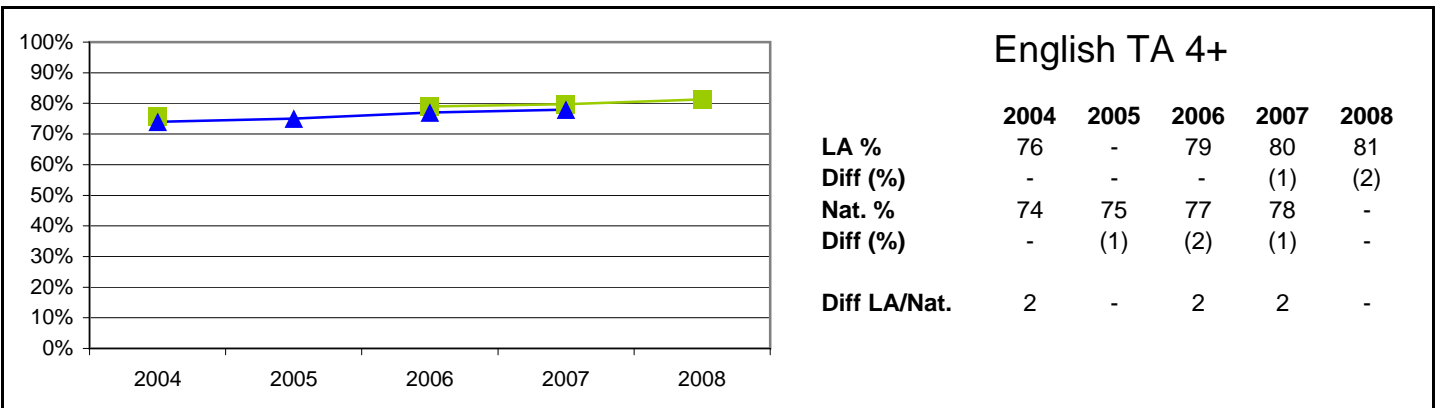
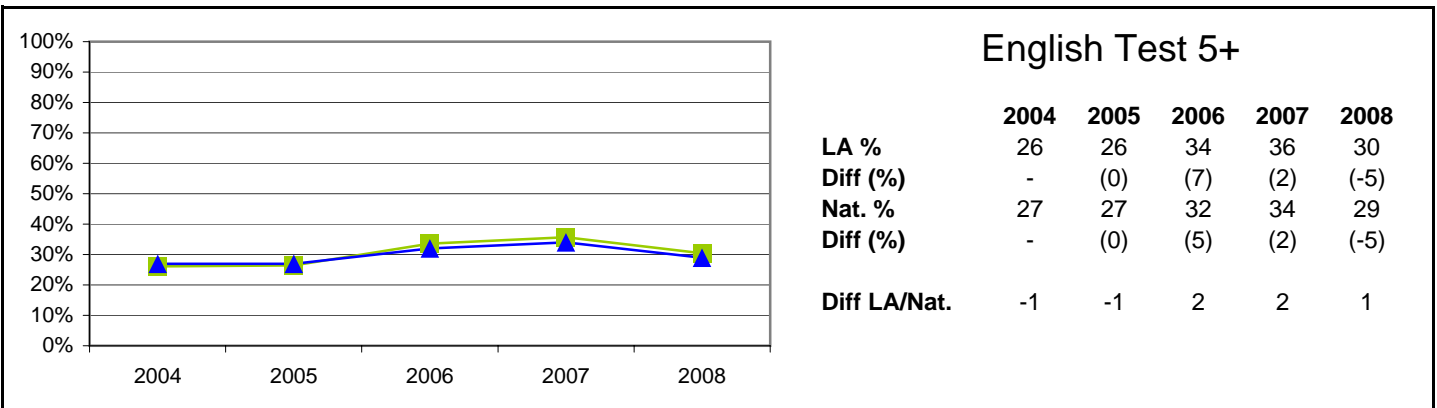
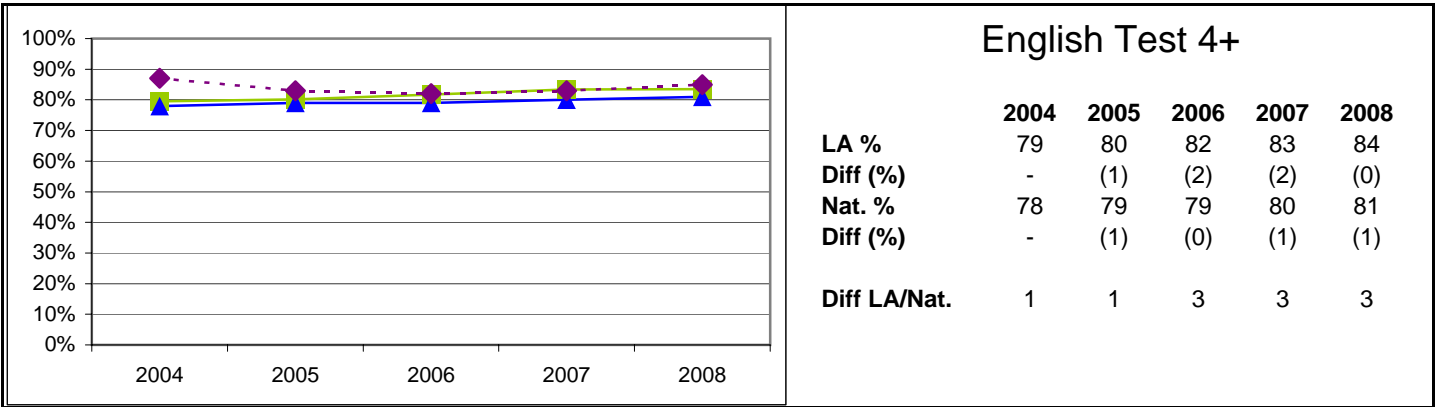
Data relates to KS2 cohort only

Most figures derived from August 2008 DCSF information.

Notes: LA data for each year relates to all schools (including special schools and the PRU).

Key Stage Two Results 2004 - 2008: English Test & TA, Percentages at Levels 4+ & 5+

855 Leicestershire

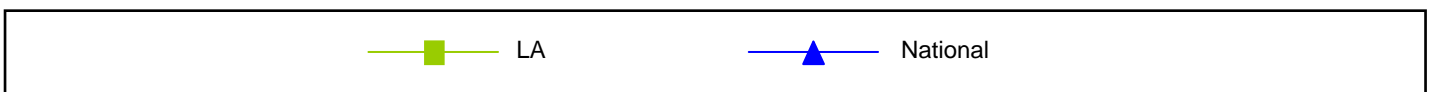
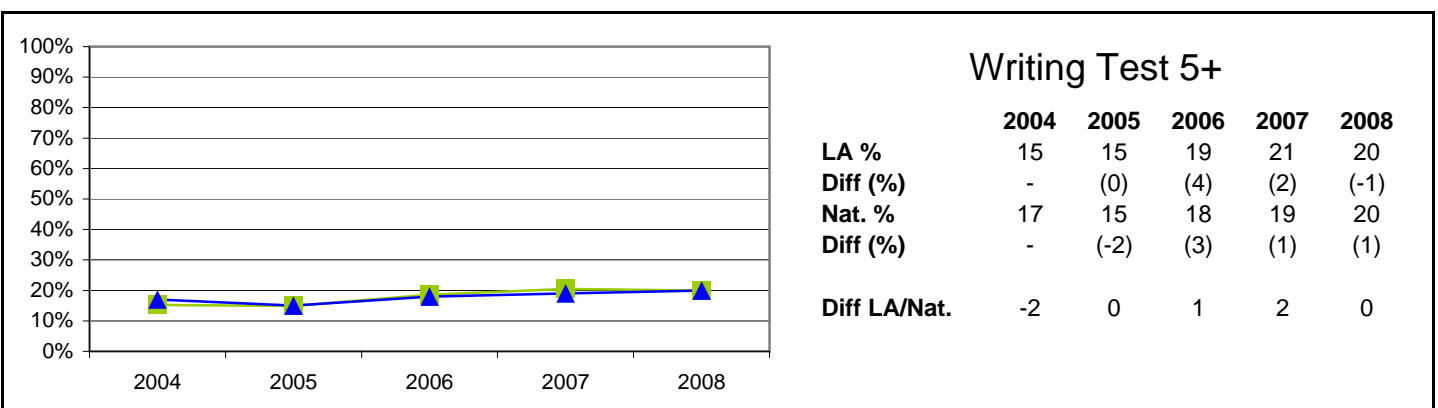
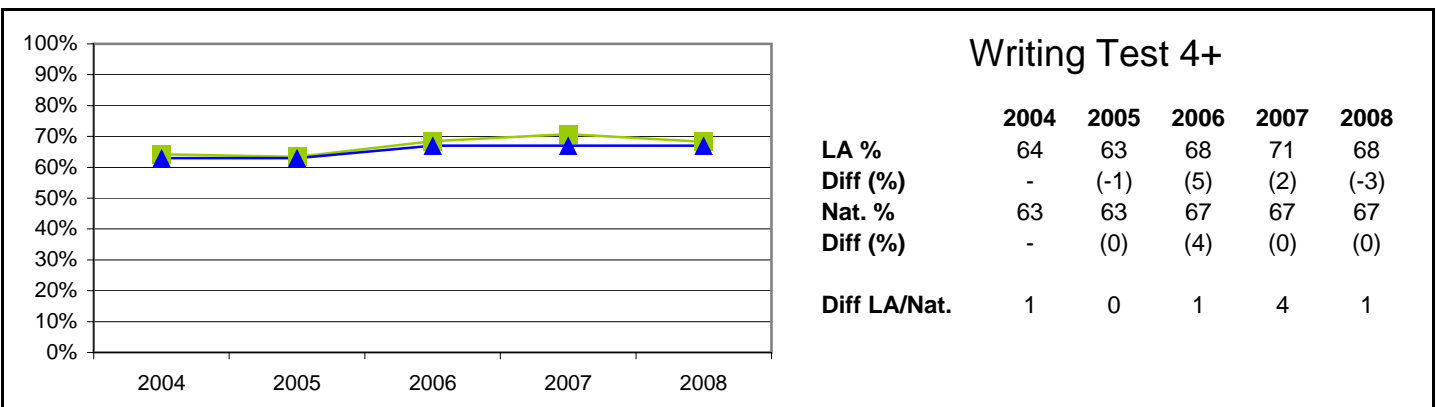
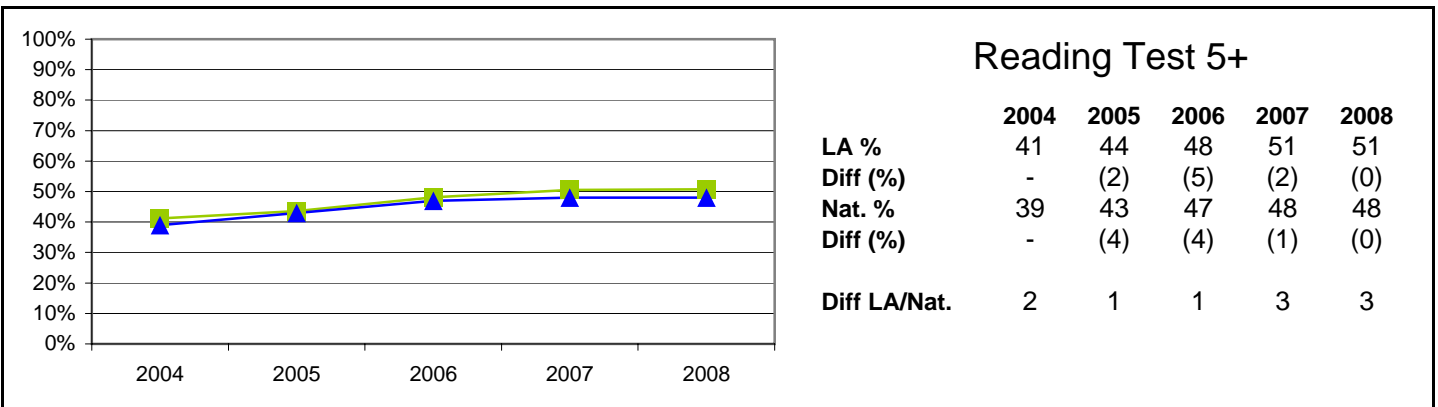
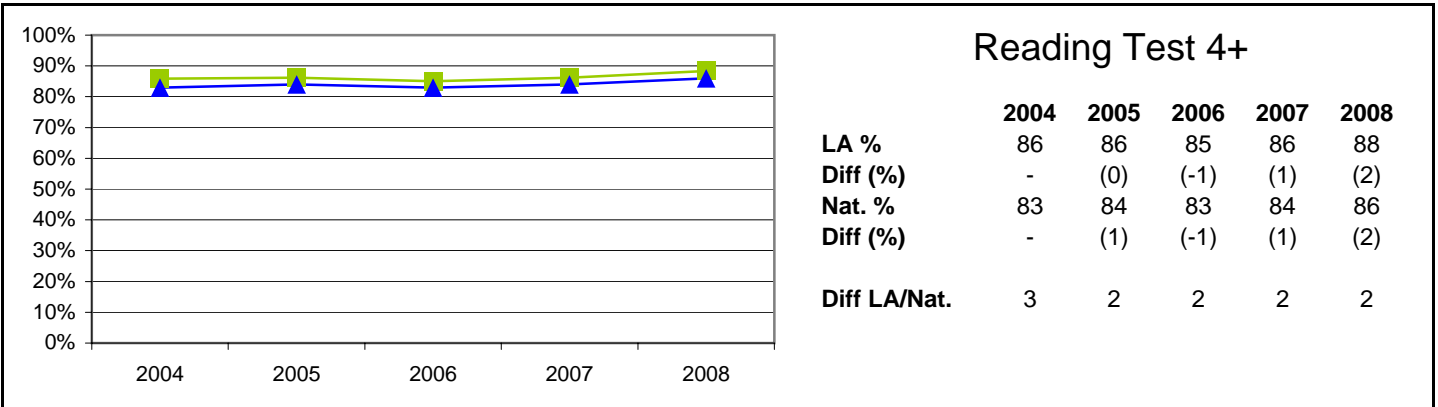


Most figures derived from August 2008 DCSF information.

National Figures have been obtained from the DCSF Statistical First Release SFR19/2008. (National Curriculum Assessments at Key Stage 2 in England, 2008 (Provisional) Tables).

Notes: LA data for each year relates to all schools (including special schools and the PRU). National data is based on all Maintained and Independent Schools.

Key Stage Two Results 2004 - 2008: Reading and Writing Test, Percentages at Levels 4+ & 5+ 855 Leicestershire

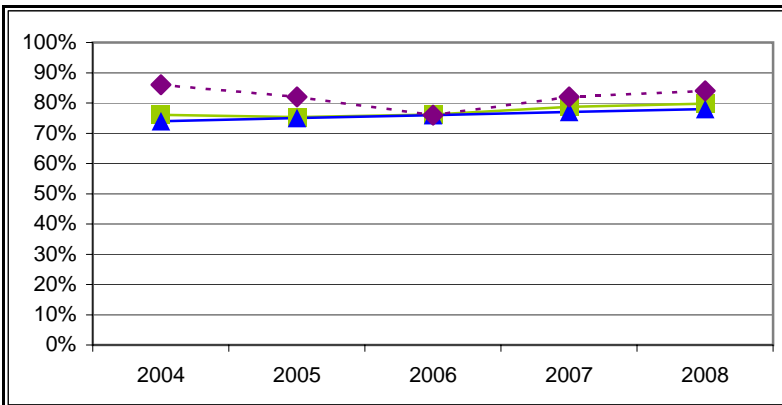


Most figures derived from August 2008 DCSF information.

National Figures have been obtained from the DCSF Statistical First Release SFR19/2008. (National Curriculum Assessments at Key Stage 2 in England, 2008 (Provisional) Tables).

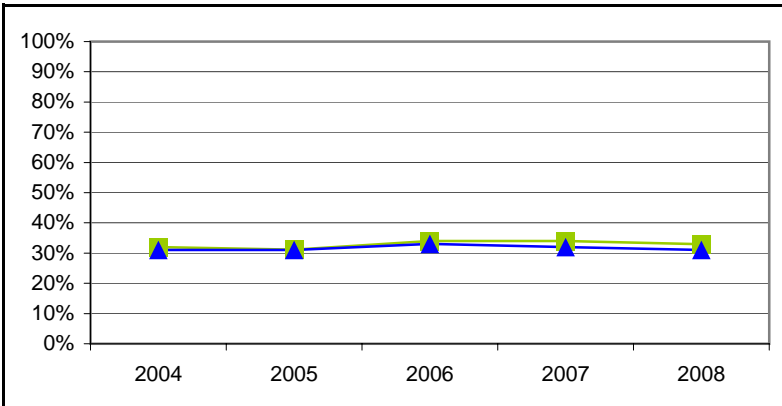
Notes: LA data for each year relates to all schools (including special schools and the PRU). National data is based on all Maintained and Independent Schools.

Key Stage Two Results 2004 - 2008: Mathematics Test & TA, Percentages at Levels 4+ & 5+ 855 Leicestershire



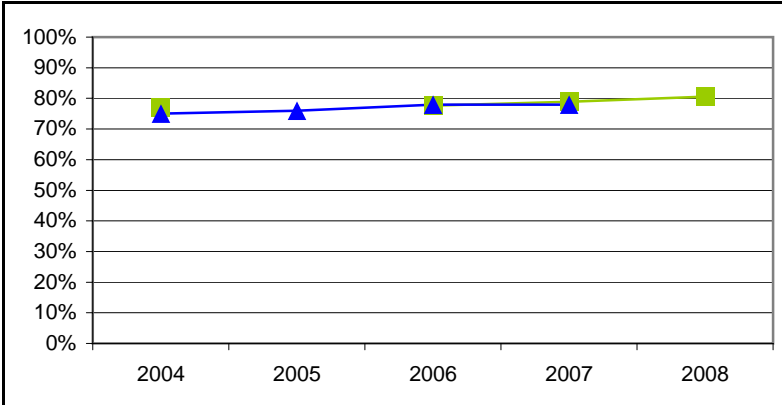
Mathematics Test 4+

	2004	2005	2006	2007	2008
LA %	76	75	76	79	80
Diff (%)	-	(-1)	(1)	(3)	(1)
Nat. %	74	75	76	77	78
Diff (%)	-	(1)	(1)	(1)	(1)
Diff LA/Nat.	2	0	0	2	2



Mathematics Test 5+

	2004	2005	2006	2007	2008
LA %	32	31	34	34	33
Diff (%)	-	(-1)	(3)	(0)	(-1)
Nat. %	31	31	33	32	31
Diff (%)	-	(0)	(2)	(-1)	(-1)
Diff LA/Nat.	1	0	1	2	2



Mathematics TA 4+

	2004	2005	2006	2007	2008
LA %	77	-	78	79	81
Diff (%)	-	-	-	(1)	(2)
Nat. %	75	76	78	78	-
Diff (%)	-	(1)	(2)	(0)	-
Diff LA/Nat.	2	-	0	1	-



Mathematics TA 5+

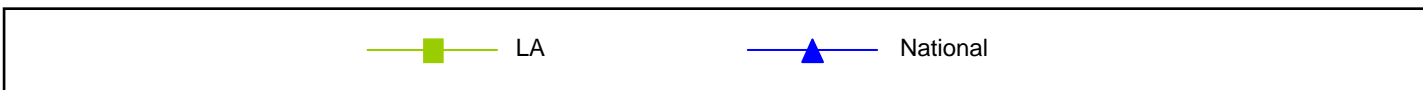
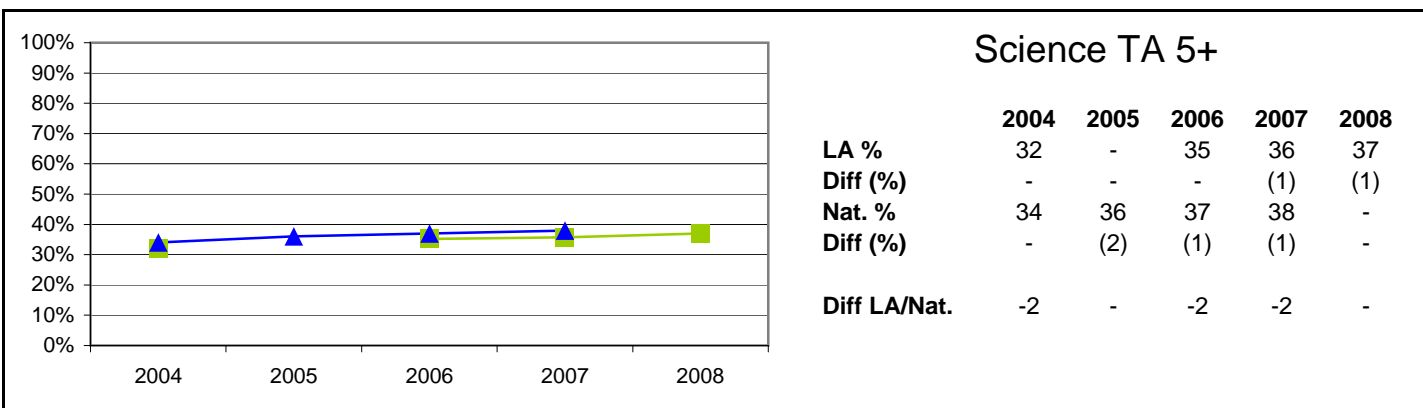
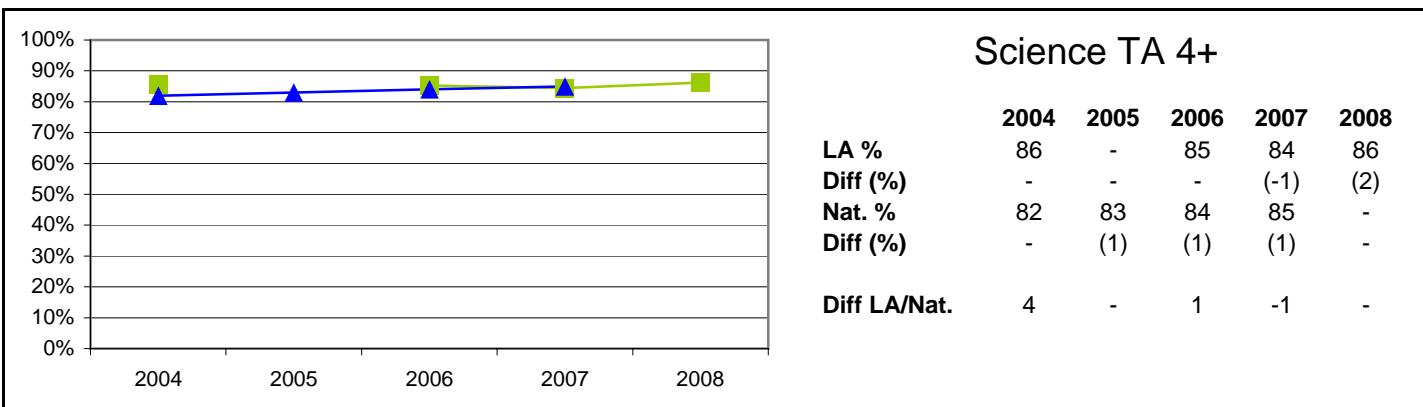
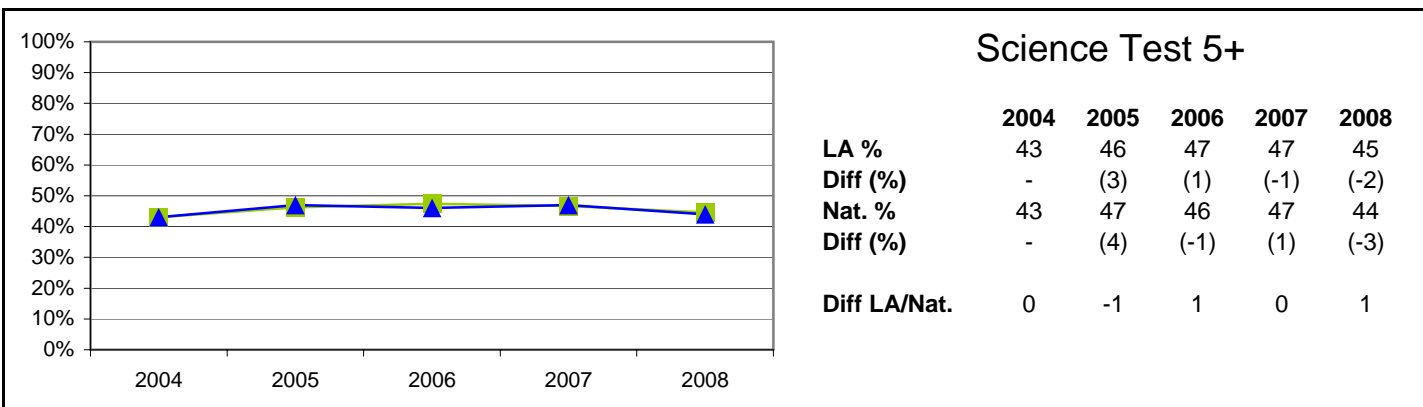
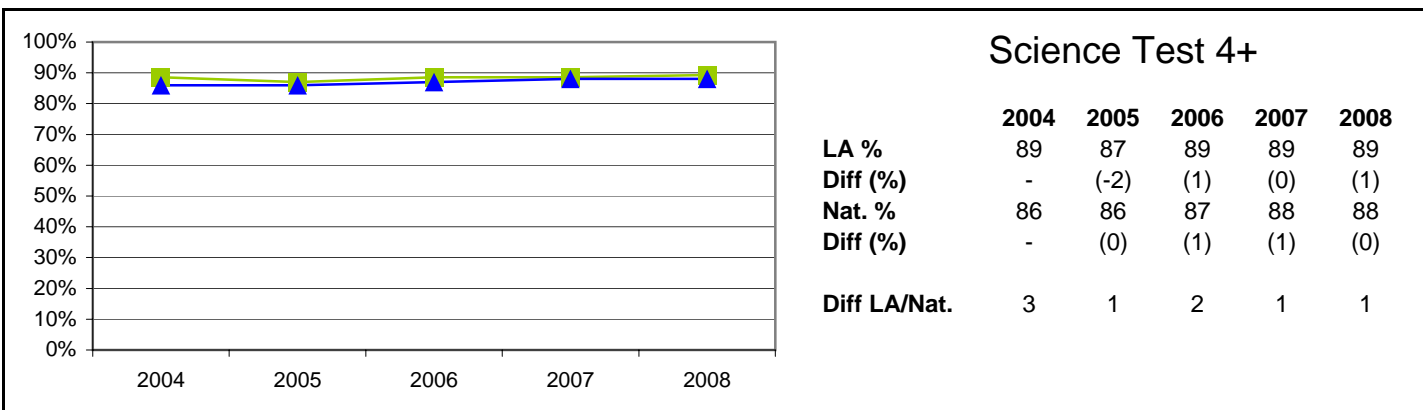
	2004	2005	2006	2007	2008
LA %	29	-	33	34	36
Diff (%)	-	-	-	(1)	(2)
Nat. %	30	30	32	33	-
Diff (%)	-	(0)	(2)	(1)	-
Diff LA/Nat.	-1	-	1	1	-



Most figures derived from August 2008 DCSF information.
 National Figures have been obtained from the DCSF Statistical First Release SFR19/2008. (National Curriculum Assessments at Key Stage 2 in England, 2008 (Provisional) Tables).
Notes: LA data for each year relates to all schools (including special schools and the PRU). National data is based on all Maintained and Independent Schools.

Key Stage Two Results 2004 - 2008: Science Test & TA, Percentages at Levels 4+ & 5+

855 Leicestershire



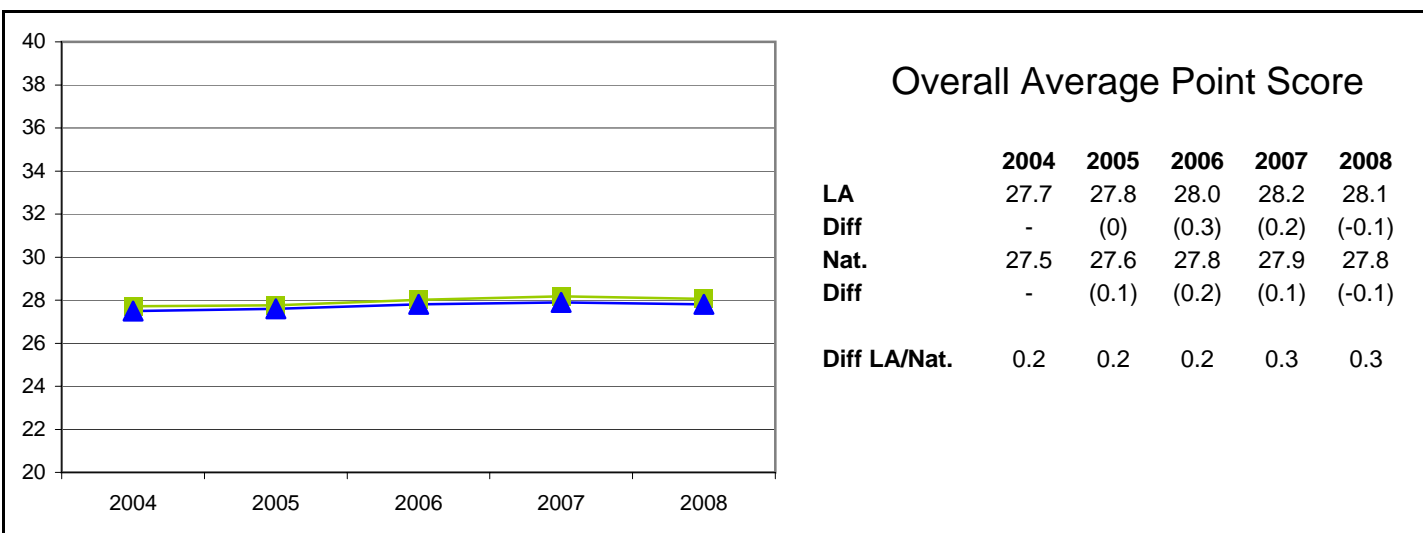
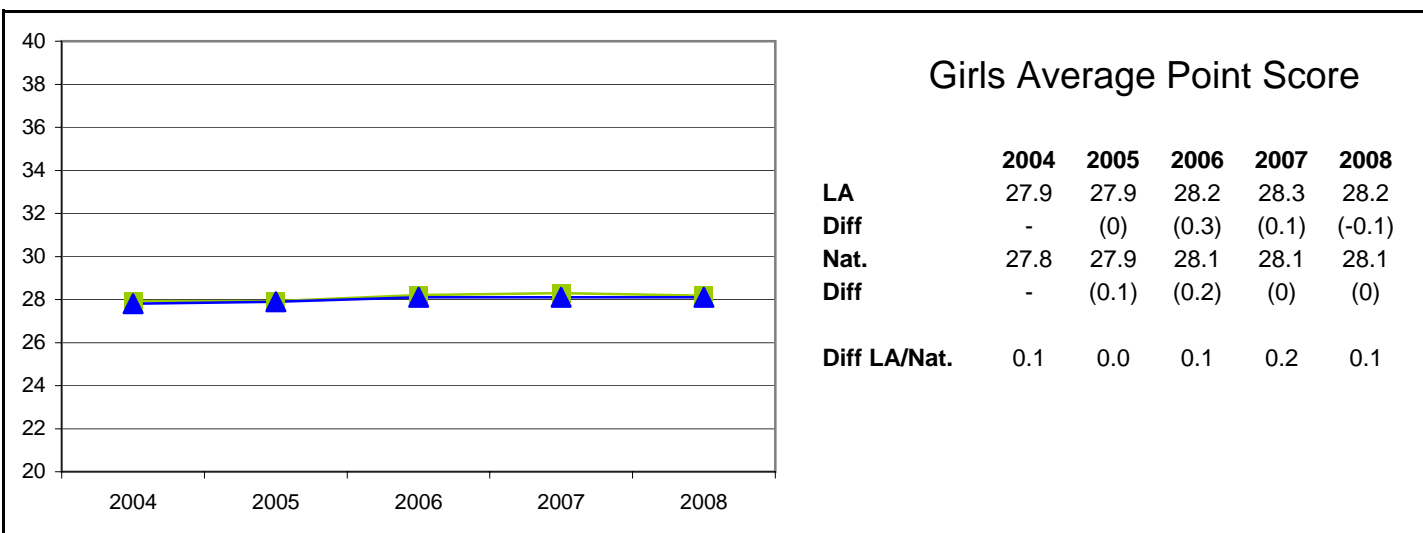
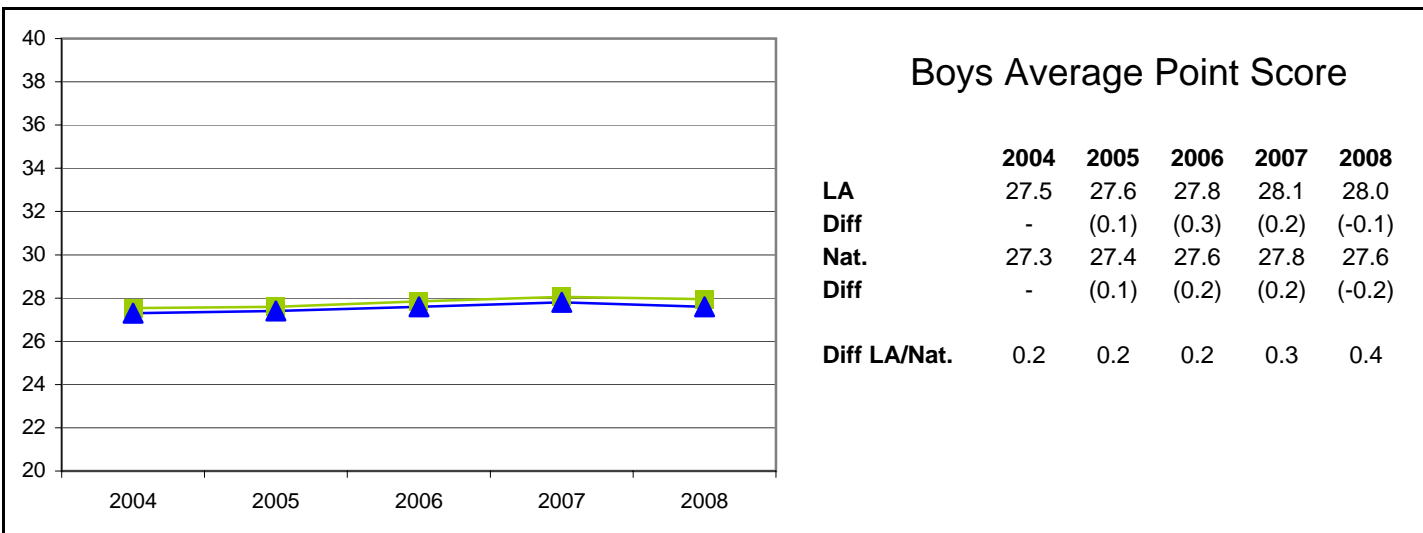
Most figures derived from August 2008 DCSF information.

National Figures have been obtained from the DCSF Statistical First Release SFR19/2008. (National Curriculum Assessments at Key Stage 2 in England, 2008 (Provisional) Tables).

Notes: LA data for each year relates to all schools (including special schools and the PRU). National data is based on all Maintained and Independent Schools.

Key Stage Two Results 2004 - 2008: Average Point Score

855 Leicestershire



—■— LA —▲— National

Most figures derived from August 2008 DCSF information.

National Figures have been obtained from the DCSF Statistical First Release SFR19/2008. (National Curriculum Assessments at Key Stage 2 in England, 2008 (Provisional) Tables).

Notes: LA data for each year relates to all schools (including special schools and the PRU). National data is based on all Maintained and Independent Schools.

Key Stage Two Results 2004 - 2008: Historical Gender Analysis, Level 4+, 5+ & APS

855 Leicestershire

English

Boys	LA					National				
	2004	2005	2006	2007	2008	2004	2005	2006	2007	2008
Level	2004	2005	2006	2007	2008	2004	2005	2006	2007	2008
4	74%	75%	77%	80%	79%	72%	74%	75%	76%	76%
5	20%	20%	27%	30%	24%	21%	21%	26%	28%	23%
APS	26.3	26.4	26.9	27.3	26.9	-	26.2	26.6	26.9	26.6

Girls	LA					National				
	2004	2005	2006	2007	2008	2004	2005	2006	2007	2008
Level	2004	2005	2006	2007	2008	2004	2005	2006	2007	2008
4	85%	85%	86%	87%	88%	83%	84%	85%	85%	85%
5	32%	33%	40%	41%	37%	33%	33%	39%	39%	36%
APS	27.8	27.9	28.4	28.6	28.4	-	27.8	28.3	28.3	28.1

Gender Gap	LA					National				
	2004	2005	2006	2007	2008	2004	2005	2006	2007	2008
Level	2004	2005	2006	2007	2008	2004	2005	2006	2007	2008
4	-11%	-10%	-9%	-7%	-9%	-11%	-10%	-10%	-9%	-9%
5	-12%	-12%	-13%	-11%	-12%	-12%	-12%	-13%	-11%	-13%
APS	-1.6	-1.5	-1.5	-1.2	-1.4	-	-1.6	-1.7	-1.4	-1.5

Reading

Boys	LA					National				
	2004	2005	2006	2007	2008	2004	2005	2006	2007	2008
Level	2004	2005	2006	2007	2008	2004	2005	2006	2007	2008
4	82%	84%	82%	84%	86%	79%	82%	79%	81%	83%
5	35%	39%	42%	47%	46%	46%	39%	41%	44%	43%
APS	27.6	27.9	28.0	28.5	28.6	-	-	-	28.5	-

Girls	LA					National				
	2004	2005	2006	2007	2008	2004	2005	2006	2007	2008
Level	2004	2005	2006	2007	2008	2004	2005	2006	2007	2008
4	89%	89%	88%	89%	91%	87%	87%	87%	87%	89%
5	47%	49%	54%	54%	56%	33%	47%	53%	52%	54%
APS	29.0	29.1	29.3	29.4	29.7	-	-	-	29.4	-

Gender Gap	LA					National				
	2004	2005	2006	2007	2008	2004	2005	2006	2007	2008
Level	2004	2005	2006	2007	2008	2004	2005	2006	2007	2008
4	-7%	-5%	-6%	-5%	-6%	-8%	-5%	-8%	-6%	-6%
5	-12%	-10%	-12%	-7%	-10%	13%	-8%	-12%	-8%	-11%
APS	-1.4	-1.1	-1.3	-0.9	-1.1	-	-	-	-0.9	-

Writing

Boys	LA					National				
	2004	2005	2006	2007	2008	2004	2005	2006	2007	2008
Level	2004	2005	2006	2007	2008	2004	2005	2006	2007	2008
4	57%	54%	61%	63%	62%	56%	55%	59%	60%	60%
5	12%	10%	14%	15%	16%	13%	10%	13%	15%	15%
APS	24.7	24.4	25.1	25.4	25.3	-	-	-	25.4	-

Girls	LA					National				
	2004	2005	2006	2007	2008	2004	2005	2006	2007	2008
Level	2004	2005	2006	2007	2008	2004	2005	2006	2007	2008
4	72%	73%	76%	79%	75%	71%	72%	75%	75%	74%
5	19%	21%	24%	26%	24%	21%	21%	23%	24%	25%
APS	26.2	26.5	26.8	27.2	26.8	-	-	-	27.2	-

Gender Gap	LA					National				
	2004	2005	2006	2007	2008	2004	2005	2006	2007	2008
Level	2004	2005	2006	2007	2008	2004	2005	2006	2007	2008
4	-14%	-18%	-15%	-16%	-13%	-15%	-17%	-16%	-15%	-14%
5	-7%	-11%	-10%	-11%	-9%	-8%	-11%	-10%	-9%	-10%
APS	-1.5	-2.0	-1.7	-1.8	-1.5	-	-	-	-1.8	-

Most figures derived from August 2008 DCSF information.

National Figures have been obtained from the DCSF Statistical First Release SFR19/2008. (National Curriculum Assessments at Key Stage 2 in England, 2008 (Provisional) Tables).

Notes: LA data for each year relates to all schools (including special schools and the PRU). National data is based on all Maintained and Independent Schools.

Key Stage Two Results 2004 - 2008: Historical Gender Analysis, Level 4+, 5+ & APS

855 Leicestershire

Mathematics

Boys	LA					National				
	2004	2005	2006	2007	2008	2004	2005	2006	2007	2008
Level	2004	2005	2006	2007	2008	2004	2005	2006	2007	2008
4	76%	76%	78%	81%	81%	74%	76%	77%	78%	79%
5	35%	33%	37%	36%	37%	33%	33%	36%	35%	35%
APS	27.4	27.3	27.6	27.8	27.9	-	27.2	27.4	27.5	27.6

Girls	LA					National				
	2004	2005	2006	2007	2008	2004	2005	2006	2007	2008
Level	2004	2005	2006	2007	2008	2004	2005	2006	2007	2008
4	76%	74%	74%	77%	78%	74%	75%	75%	76%	78%
5	29%	29%	31%	32%	29%	29%	28%	31%	30%	28%
APS	27.1	27.0	27.1	27.3	27.2	-	26.9	27.1	27.0	27.1

Gender Gap	LA					National				
	2004	2005	2006	2007	2008	2004	2005	2006	2007	2008
Level	2004	2005	2006	2007	2008	2004	2005	2006	2007	2008
4	1%	2%	3%	4%	3%	0%	1%	2%	2%	1%
5	5%	5%	5%	4%	9%	4%	5%	5%	5%	7%
APS	0.3	0.4	0.5	0.5	0.7	-	0.3	0.3	0.5	0.5

Science

Boys	LA					National				
	2004	2005	2006	2007	2008	2004	2005	2006	2007	2008
Level	2004	2005	2006	2007	2008	2004	2005	2006	2007	2008
4	88%	87%	88%	89%	89%	86%	86%	86%	87%	87%
5	43%	48%	47%	46%	44%	43%	48%	45%	46%	43%
APS	28.9	29.0	29.0	29.0	28.9	-	28.9	28.7	28.9	28.7

Girls	LA					National				
	2004	2005	2006	2007	2008	2004	2005	2006	2007	2008
Level	2004	2005	2006	2007	2008	2004	2005	2006	2007	2008
4	89%	87%	89%	88%	89%	86%	87%	87%	88%	89%
5	43%	45%	48%	47%	45%	43%	46%	46%	47%	45%
APS	28.8	28.9	29.1	29.1	29.0	-	28.9	28.9	29.0	29.0

Gender Gap	LA					National				
	2004	2005	2006	2007	2008	2004	2005	2006	2007	2008
Level	2004	2005	2006	2007	2008	2004	2005	2006	2007	2008
4	0%	0%	-1%	0%	0%	0%	-1%	-1%	-1%	-2%
5	1%	3%	0%	-1%	0%	0%	2%	-1%	-1%	-2%
APS	0.0	0.2	-0.1	-0.1	0.0	-	0.0	-0.2	-0.1	-0.3

 Gender gap less than national gender gap  Gender gap greater than national gender gap

Most figures derived from August 2008 DCSF information.

National Figures have been obtained from the DCSF Statistical First Release SFR19/2008. (National Curriculum Assessments at Key Stage 2 in England, 2008 (Provisional) Tables).

Notes: LA data for each year relates to all schools (including special schools and the PRU). National data is based on all Maintained and Independent Schools.

Key Stage Two Results 2004 - 2008 Ethnicity Analysis: English


855 Leicestershire


Percentage achieving Level 4+

Ethnicity	LA					National				
	2004	2005	2006	2007	2008	2004	2005	2006	2007	2008
White British	79%	80%	81%	84%	84%	78%	80%	80%	81%	-
Irish	91%	83%	89%	88%	92%	82%	84%	82%	84%	-
Any other White background	74%	76%	81%	77%	73%	73%	75%	71%	69%	-
Total White	79%	80%	81%	83%	84%	78%	79%	80%	81%	-
White and Black Caribbean	75%	77%	79%	78%	74%	75%	77%	81%	79%	-
White and Black African	82%	89%	100%	85%	82%	79%	80%	77%	81%	-
White and Asian	92%	86%	86%	88%	92%	84%	85%	85%	86%	-
Any other Mixed background	88%	88%	88%	69%	84%	81%	81%	83%	83%	-
Total Mixed	85%	83%	84%	79%	82%	79%	80%	81%	82%	-
Indian	86%	84%	88%	90%	85%	83%	83%	85%	85%	-
Pakistani	84%	78%	81%	55%	88%	68%	68%	70%	72%	-
Bangladeshi	66%	70%	81%	70%	71%	72%	74%	75%	77%	-
Any other Asian background	82%	71%	83%	85%	73%	78%	78%	77%	77%	-
Total Asian	84%	82%	87%	87%	83%	75%	75%	76%	77%	-
Black Caribbean	83%	77%	89%	80%	80%	70%	72%	73%	74%	-
Black African	78%	78%	71%	65%	67%	72%	71%	72%	72%	-
Any other Black background	67%	0%	75%	100%	75%	72%	73%	73%	73%	-
Total Black	78%	74%	80%	71%	71%	71%	72%	72%	73%	-
Chinese	84%	82%	81%	92%	85%	83%	86%	86%	85%	-
Any other ethnic group	72%	92%	81%	78%	62%	70%	71%	69%	69%	-
Unclassified	78%	76%	79%	81%	83%	72%	75%	74%	-	-
All pupils	79%	80%	82%	83%	84%	77%	79%	79%	80%	-

Differences

Ethnicity	LA vs. National				
	2004	2005	2006	2007	2008
White British	1%	0%	1%	2%	-
Irish	9%	-1%	7%	3%	-
Any other White background	1%	1%	10%	8%	-
Total White	1%	1%	1%	3%	-
White and Black Caribbean	0%	0%	-2%	-1%	-
White and Black African	3%	9%	23%	4%	-
White and Asian	8%	1%	1%	2%	-
Any other Mixed background	7%	6%	5%	-13%	-
Total Mixed	6%	3%	3%	-3%	-
Indian	3%	1%	3%	5%	-
Pakistani	16%	10%	11%	-17%	-
Bangladeshi	-6%	-4%	6%	-7%	-
Any other Asian background	4%	-7%	6%	8%	-
Total Asian	9%	7%	11%	9%	-
Black Caribbean	13%	5%	16%	6%	-
Black African	6%	7%	-1%	-7%	-
Any other Black background	-5%	-73%	2%	27%	-
Total Black	7%	2%	8%	-2%	-
Chinese	1%	-4%	-5%	7%	-
Any other ethnic group	2%	21%	12%	9%	-
Unclassified	6%	1%	5%	-	-
All pupils	2%	1%	3%	3%	-

 Performance greater than the national average for the ethnic group

 Performance less than the national average for the ethnic group

 Attainment greater than the comparator figure

 Attainment less than the comparator figure

Figures derived from the most recent DCSF data sources in all cases.

Notes: LA data for each year relates to all schools (including special schools and the PRU). National data is based on all Maintained and Independent Schools.

Key Stage Two Results 2004 - 2008 Ethnicity Analysis: Mathematics


855 Leicestershire


Percentage achieving Level 4+

Ethnicity	LA					National				
	2004	2005	2006	2007	2008	2004	2005	2006	2007	2008
White British	76%	75%	76%	79%	80%	75%	76%	77%	78%	-
Irish	100%	89%	89%	81%	75%	78%	80%	80%	82%	-
Any other White background	71%	66%	75%	78%	73%	70%	73%	71%	72%	-
Total White	76%	75%	76%	79%	80%	74%	76%	77%	78%	-
White and Black Caribbean	73%	70%	71%	69%	69%	69%	70%	75%	73%	-
White and Black African	73%	89%	100%	77%	88%	73%	74%	71%	76%	-
White and Asian	83%	77%	84%	85%	80%	80%	81%	83%	83%	-
Any other Mixed background	78%	85%	78%	75%	85%	76%	76%	77%	78%	-
Total Mixed	78%	77%	78%	76%	78%	74%	75%	76%	77%	-
Indian	81%	78%	82%	85%	84%	80%	80%	81%	82%	-
Pakistani	84%	65%	76%	65%	84%	61%	62%	64%	67%	-
Bangladeshi	63%	53%	66%	55%	61%	67%	69%	70%	72%	-
Any other Asian background	69%	67%	77%	85%	78%	79%	80%	76%	78%	-
Total Asian	79%	75%	80%	82%	82%	70%	71%	72%	74%	-
Black Caribbean	50%	62%	78%	80%	100%	61%	61%	62%	65%	-
Black African	78%	78%	57%	57%	50%	66%	64%	63%	67%	-
Any other Black background	67%	0%	50%	67%	75%	65%	65%	66%	66%	-
Total Black	67%	65%	65%	61%	70%	64%	63%	63%	66%	-
Chinese	96%	88%	81%	88%	89%	90%	91%	92%	92%	-
Any other ethnic group	83%	100%	88%	79%	72%	73%	72%	70%	72%	-
Unclassified	78%	75%	76%	70%	77%	69%	70%	70%	-	-
All pupils	76%	75%	76%	79%	80%	74%	75%	75%	77%	-


Differences

Ethnicity	LA vs. National				
	2004	2005	2006	2007	2008
White British	1%	-1%	-1%	1%	-
Irish	22%	9%	9%	-1%	-
Any other White background	1%	-7%	4%	6%	-
Total White	2%	-1%	-1%	1%	-
White and Black Caribbean	4%	0%	-4%	-4%	-
White and Black African	0%	15%	29%	1%	-
White and Asian	3%	-4%	1%	3%	-
Any other Mixed background	2%	9%	1%	-4%	-
Total Mixed	4%	2%	2%	0%	-
Indian	1%	-2%	1%	4%	-
Pakistani	23%	3%	12%	-2%	-
Bangladeshi	-5%	-16%	-4%	-17%	-
Any other Asian background	-10%	-13%	1%	7%	-
Total Asian	9%	4%	8%	8%	-
Black Caribbean	-11%	1%	16%	15%	-
Black African	12%	14%	-6%	-10%	-
Any other Black background	2%	-65%	-16%	1%	-
Total Black	3%	2%	2%	-5%	-
Chinese	6%	-3%	-11%	-4%	-
Any other ethnic group	10%	28%	18%	8%	-
Unclassified	9%	5%	6%	-	-
All pupils	2%	0%	1%	2%	-

 Performance greater than the national average for the ethnic group

 Performance less than the national average for the ethnic group

 Attainment greater than the comparator figure

 Attainment less than the comparator figure

Figures derived from the most recent DCSF data sources in all cases.

Notes: LA data for each year relates to all schools (including special schools and the PRU). National data is based on all Maintained and Independent Schools.

Key Stage Two Results 2004 - 2008 Ethnicity Analysis: Science


855 Leicestershire


Percentage achieving Level 4+


Ethnicity	LA					National				
	2004	2005	2006	2007	2008	2004	2005	2006	2007	2008
White British	89%	88%	89%	89%	90%	87%	88%	88%	89%	-
Irish	91%	94%	100%	81%	92%	88%	89%	89%	90%	-
Any other White background	80%	81%	82%	83%	81%	81%	83%	79%	79%	-
Total White	89%	87%	89%	89%	90%	87%	87%	88%	88%	-
White and Black Caribbean	82%	85%	84%	84%	81%	84%	85%	86%	87%	-
White and Black African	91%	89%	100%	85%	94%	85%	85%	85%	88%	-
White and Asian	94%	93%	92%	93%	92%	89%	90%	90%	91%	-
Any other Mixed background	94%	95%	94%	83%	90%	88%	88%	88%	89%	-
Total Mixed	90%	90%	89%	87%	88%	86%	87%	87%	88%	-
Indian	86%	82%	88%	92%	89%	87%	87%	88%	89%	-
Pakistani	84%	65%	67%	70%	100%	73%	73%	73%	78%	-
Bangladeshi	78%	70%	74%	70%	68%	78%	79%	79%	83%	-
Any other Asian background	79%	71%	86%	91%	70%	85%	85%	82%	84%	-
Total Asian	85%	80%	86%	89%	87%	79%	80%	80%	83%	-
Black Caribbean	67%	77%	89%	100%	86%	78%	78%	79%	82%	-
Black African	100%	78%	57%	78%	83%	78%	77%	76%	79%	-
Any other Black background	67%	0%	75%	100%	75%	81%	79%	80%	80%	-
Total Black	83%	74%	75%	84%	83%	78%	78%	77%	80%	-
Chinese	100%	94%	81%	96%	100%	91%	92%	91%	92%	-
Any other ethnic group	71%	92%	94%	88%	76%	80%	80%	76%	79%	-
Unclassified	86%	87%	89%	85%	89%	82%	84%	82%	-	-
All pupils	89%	87%	89%	89%	89%	86%	86%	86%	87%	-

Differences

Ethnicity	LA vs. National				
	2004	2005	2006	2007	2008
White British	2%	0%	1%	0%	-
Irish	3%	5%	11%	-9%	-
Any other White background	-1%	-2%	3%	4%	-
Total White	2%	0%	1%	0%	-
White and Black Caribbean	-2%	0%	-2%	-3%	-
White and Black African	6%	4%	15%	-3%	-
White and Asian	5%	3%	2%	2%	-
Any other Mixed background	6%	7%	6%	-6%	-
Total Mixed	4%	3%	2%	-2%	-
Indian	-1%	-5%	0%	3%	-
Pakistani	11%	-8%	-6%	-8%	-
Bangladeshi	0%	-9%	-5%	-13%	-
Any other Asian background	-6%	-14%	4%	7%	-
Total Asian	6%	0%	6%	6%	-
Black Caribbean	-11%	-1%	10%	18%	-
Black African	22%	1%	-19%	-1%	-
Any other Black background	-14%	-79%	-5%	20%	-
Total Black	5%	-4%	-2%	4%	-
Chinese	9%	2%	-10%	5%	-
Any other ethnic group	-9%	12%	18%	9%	-
Unclassified	4%	3%	7%	-	-
All pupils	3%	1%	3%	1%	-

 Performance greater than the national average for the ethnic group

 Performance less than the national average for the ethnic group

 Attainment greater than the comparator figure

 Attainment less than the comparator figure

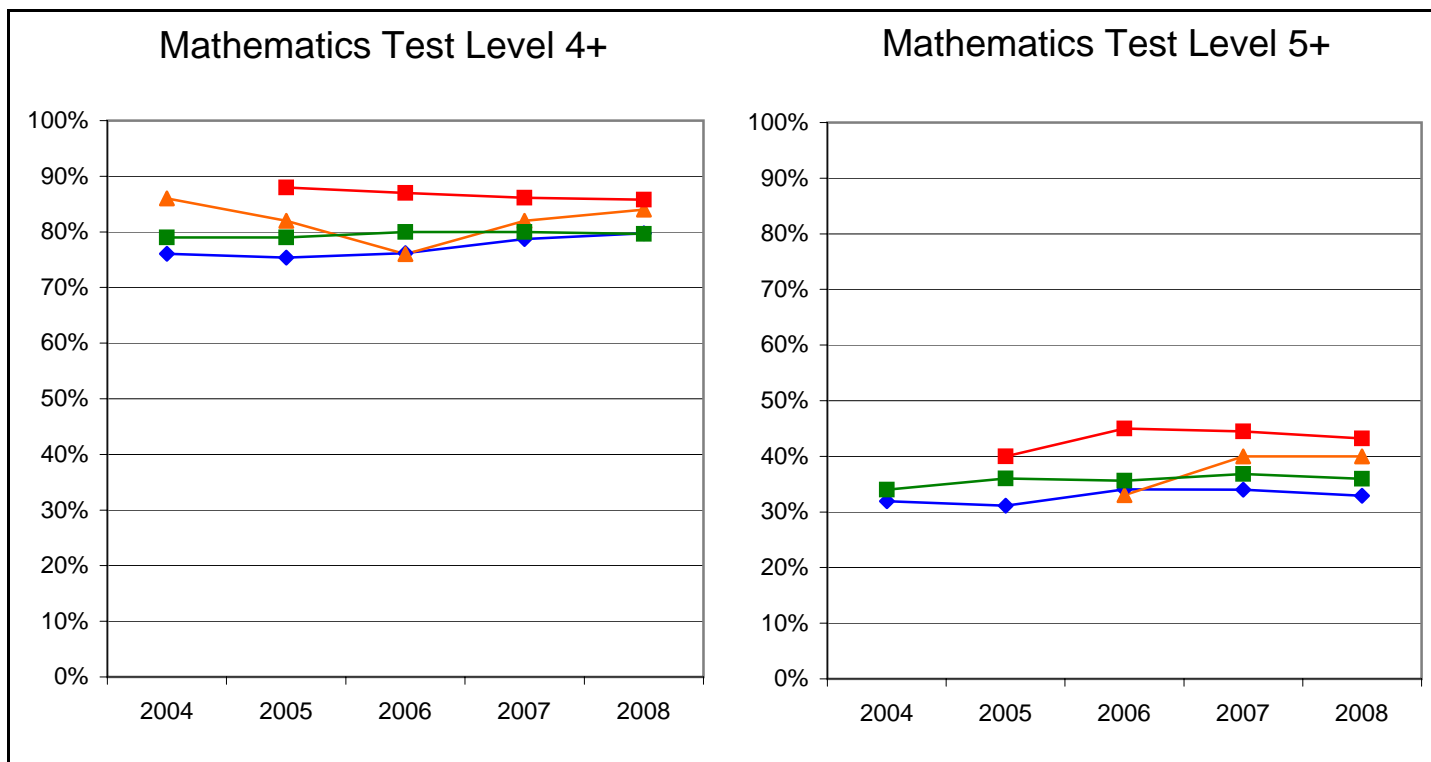
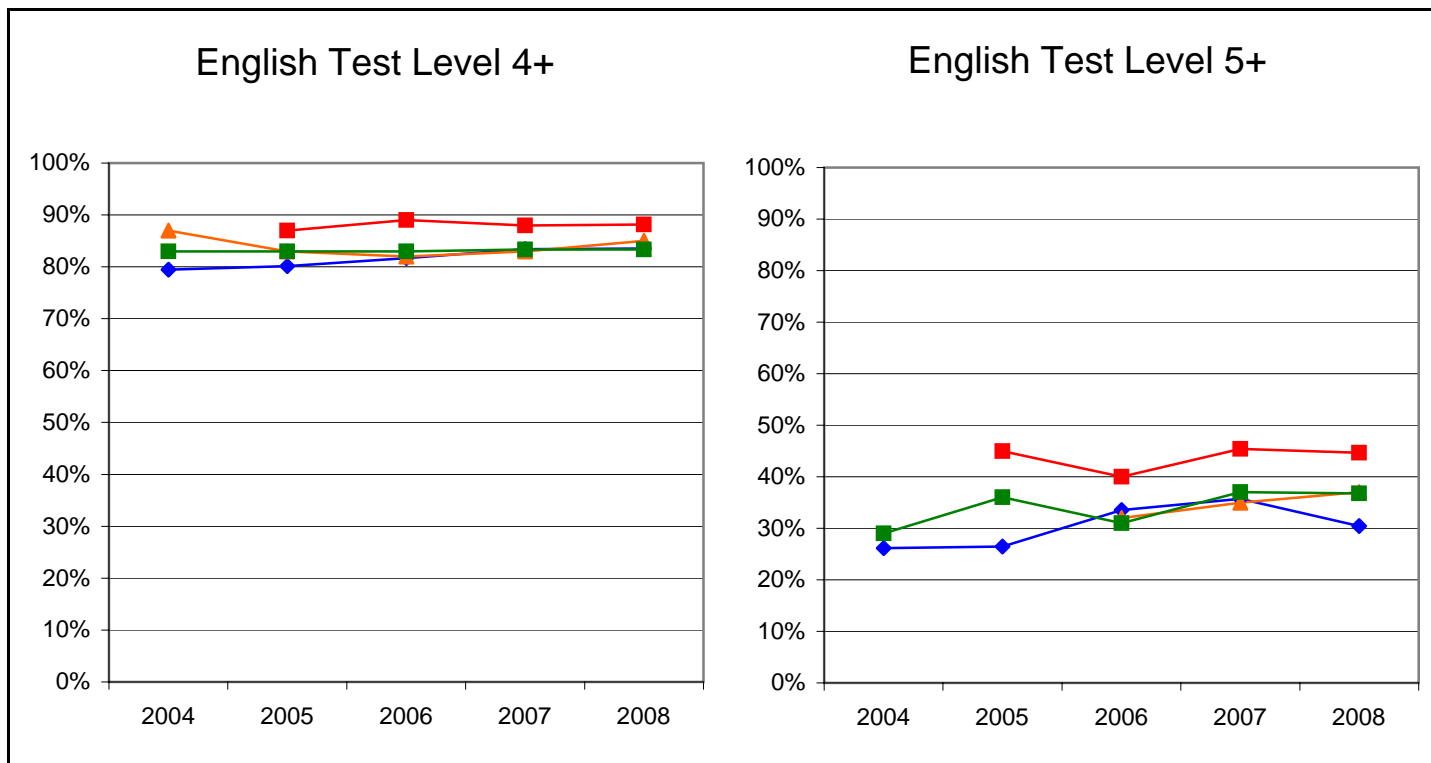
Figures derived from the most recent DCSF data sources in all cases.

Notes: LA data for each year relates to all schools (including special schools and the PRU). National data is based on all Maintained and Independent Schools.

Key Stage 2 Results, Targets and FFT Estimates 2004 - 2008: Levels 4+ and 5+

855 Leicestershire

Graphs display a historical comparison of LA attainment against LA Targets and FFT Type 'B' and 'D' estimates



Notes:
 LA Targets based on EDP (2004) and SaLTS (2005 onwards) submissions.
 FFT Type 'B' Band 'D' data based on estimates as at September 2008.