

**Key Stage
Three
Officer Pack
2007**

Performance Team, Knowledge
Management, CYPS
Richard Gretton: 0116 305 6638
Lea Parsons: 0116 305 6481

KEY STAGE THREE GRAPH PACK

Background

This report provides an overview of School level, Local Authority and National Key Stage Three attainment data. The purpose of the report is to provide basic attainment comparisons between the Local and National situation and to include further analysis of attainment by gender and ethnicity.

The Key Stage Three Graph Pack includes the following contents:

- Breakdown of 2007 Key Stage Three attainment
- Headline contextual data for the 2007 cohort
- English Test Attainment and Teacher Assessment 5+, 6+ and 7+ 2003 to 2007
- Mathematics Test Attainment and Teacher Assessment 5+, 6+ and 7+ 2003 to 2007
- Science Test Attainment and Teacher Assessment 5+, 6+ and 7+ 2003 to 2007
- ICT Teacher Assessment 5+, 6+ and 7+ 2003 to 2007
- Reading and Writing Test Attainment 5+, 6+ and 7+ 2003 to 2007
- Average Point Scores (APS) for boys, girls and all pupils 2003 to 2007
- Teacher Assessments for all foundation subjects 5+, 6+ and 7+ 2003 to 2007
- Key Stage Three pupil number counts by Ethnicity and Gender between 2003 and 2007
- Gender Analysis 5+, 6+ and 7+ with APS 2003 to 2007 for English, Maths, Science, ICT, Reading and Writing
- Ethnicity Analysis 5+ 2003 to 2007 for English, Maths and Science
- FFT Type 'B'/'D', Statutory Targets and Actual Attainment comparisons for English, Maths and Science for 5+ and 6+

Technical details

1. Key Stage Three attainment data is supplied to the LA by the DCSF, the latest data supplied was made available on 22nd August 2007. All the School level and Local Authority data are derived from this data set. To allow analysis based on ethnicity, the most recently available Spring School Census data has been matched into the data set. The data for 2007 at this stage of the academic year is classified as provisional.
2. The source of the National data for 2007 is the DCSF Statistical First Release SFR25/2007 National Curriculum Assessments at Key Stage 3 in England, 2007 (Provisional). All historic National data has been obtained from a variety of DCSF attainment sources.
3. Included in the Graph Pack are sections on gender and ethnicity analysis. For gender analysis purposes we have highlighted where the gender gap is larger than the national average and for ethnicity analysis purposes we have highlighted where headline performance is greater than or less than average national or local performance. No degree of significance is placed on the differences highlighted.
4. Also included in the analysis are FFT (Fischer Family Trust) Key Stage Three Type 'B' and 'D' Estimates for 2003 to 2007 based on Key Stage Two prior attainment (both Test and Teacher Assessment data). FFT Type 'B' estimates are based upon individual pupils' attainment by gender between Key Stage Two and Key Stage Three adjusted to allow for the performance of 'similar' schools. Type 'D' estimates provide an indication of achievement that would be consistent with the progress made by students in schools with the highest value-added (top 25% of schools nationally) between Key Stage Two and Key Stage Three.
5. Historic Teacher Assessment (TA) data for Schools, the Local Authority and Nationally may be partial for a given year because some schools did not submit valid Teacher Assessment data to the NAA (National Assessment Agency), 2006 is an example of this. This will have impact on the Local Authority and National data to some degree, and the schools concerned will have no TA data reported in this pack for those years. Nationally for 2007 the Teacher Assessment data is approximately 70% complete, in 2006 it was 75% complete. For Leicestershire 2006 was 88% complete and 2007 100% complete as the Local Authority Performance Team collected the data directly from schools and transferred it to the NAA.

Enquiries

Please contact the following people listed below if you wish to make any comments regarding this report or if you have any queries regarding the analysis.

As this analysis is very much developmental we would welcome any comments so that the product can improve and evolve.

Report contacts:

<p>Richard Gretton Statistics Manager Performance Team, Knowledge Management Children & Young People's Service Leicestershire County Council</p> <p>Tel No: 0116 305 6638 E-Mail: rgretton@leics.gov.uk</p>	<p>Lea Parsons Senior Analyst Performance Team, Knowledge Management Children & Young People's Service Leicestershire County Council</p> <p>Tel No: 0116 305 6481 E-Mail: lparsons@leics.gov.uk</p>
<p>Lynda Smith School Development Adviser School Improvement & Performance Service Children & Young People's Service Leicestershire County Council</p> <p>Tel No: 0116 305 6420 E-Mail: lysmith@leics.gov.uk</p>	

Headline commentary:

Leicestershire has maintained its historic standing of being within the top 10% of Local Authorities in terms of Key Stage Three as whole. Leicestershire continues to perform significantly better than the National average across 5+, 6+ and 7+ attainment measures. At 5+ Leicestershire is ranked 3rd overall when English, Maths and Science attainment are aggregated together. The rankings are broken down as follows, at 5+ Maths and English Leicestershire is ranked 6th, in terms of 5+ Science Leicestershire is ranked 1st against all Local Authorities in England, this has not been previously achieved. The increases and decreases in Leicestershire's performance across the 5+ to 7+ attainment measures this year in English, Maths and Science reflects the national trend to a very large degree. English and Maths at 5+ has remained stable over the last 3 years, currently standing at 82% for English and 84% for Maths. Science at 5+ has showed a rapid rate of increase from 2004 to currently being 84%. As a result Leicestershire achieved its 5+ Key Stage Three statutory targets for Maths and Science, English was 2% below the target.

Leicestershire's excellent performance at Key Stage Three slightly weakens at the higher attainment levels, at 6+ Leicestershire is still within the top 10% of Local Authorities nationally, at 7+ using the most recent available comparisons Leicestershire has fallen to be within the top 20% of Local Authorities. This is reflected also in comparison with performance against Fischer Family Trust (FFT) estimates, at 5+ Leicestershire is relatively inline with FFT Type D estimates (pupil performance consistent with schools at the top 25% of overall value added), and at 6+ comparisons have weakened which are most pronounced in terms of English.

Leicestershire and National Key Stage Three Performance (2001 to 2007)

	Year	5+			6+			7+			APS	VA	
		English	Maths	Science	English	Maths	Science	English	Maths	Science			
Leicestershire	2007	82	84	84	39	65	52	10	35	21	36.4	-	Provisional
National	2007	74	76	73	32	56	41	8	29	15	34.9	-	Provisional
Leicestershire	2006	83	85	83	42	67	51	11	36	19	36.5	100.9	
National	2006	73	77	72	35	57	41	10	30	15	35.0	99.8	
Leicestershire	2005	83	82	80	44	62	47	11	30	15	36.0	100.8	
National	2005	74	74	70	35	53	37	9	25	12	34.5	99.7	
Leicestershire	2004	80	81	78	39	61	46	9	28	15	35.6	100.9	
National	2004	71	73	66	34	52	34	10	23	11	34.1	99.8	
Leicestershire	2003	76	80	80	37	58	53	8	28	16	35.7	101.0	
National	2003	69	71	68	35	49	40	10	24	11	34.3	99.9	
Leicestershire	2002	75	76	79	37	54	44	11	24	14	35.2	101.1	
National	2002	67	67	67	32	45	33	11	20	11	33.8	99.9	
Leicestershire	2001	73	77	79	36	52	46	9	23	13	35.0	-	
National	2001	65	66	66	32	43	34	9	20	8	-	-	

Leicestershire's Key Stage Three Performance (Rankings) against all LAs and Statistical Neighbour LAs (2007 data is provisional) (1 = highest ranked, 149 = lowest ranked)

	Year	5+			6+			7+			APS	VA	LAs	
		English	Maths	Science	English	Maths	Science	English	Maths	Science				
National	2007	6	6	1	21	11	11	-	-	-	13	-	149	Provisional
New CS Stat. N'bours	2007	1	1	1	1	1	1	-	-	-	1	-	11	Provisional
National	2006	7	5	4	20	10	12	31	22	23	13	6	149	
New CS Stat. N'bours	2006	1	1	1	1	1	1	2	1	1	1	1	11	
Stat. N'bours	2006	1	1	1	1	1	1	2	1	1	1	1	11	
National	2005	4	5	5	11	10	11	-	-	-	13	3	149	
Stat. N'bours	2005	1	1	1	1	1	1	-	-	-	1	1	11	
New CS Stat. N'bours	2005	1	1	1	1	1	1	-	-	-	1	1	11	
National	2004	6	6	3	23	10	8	-	-	-	12	3	149	
Stat. N'bours	2004	1	1	1	1	1	1	-	-	-	1	1	11	
National	2003	11	4	3	42	10	8	-	-	-	11	2	149	
Stat. N'bours	2003	3	1	1	5	1	1	-	-	-	1	1	11	
National	2002	8	9	3	29	10	9	-	-	-	14	2	149	
Stat. N'bours	2002	1	1	1	3	1	1	-	-	-	2	1	11	
National	2001	14	3	2	34	8	6	-	-	-	-	-	149	
Stat. N'bours	2001	1	1	1	3	1	1	-	-	-	-	-	11	

Notes: New CS Stat. N'bours (New Children Services Statistical Neighbours) relates to the new set of Statistical Neighbours issued in March 2007 by the DCSF following the revision of the previous Ofsted model to enable Children's Services Performance comparisons. "Stat. N'bours" relates to the previous Ofsted Statistical Neighbours that formed the basis of benchmarking comparisons prior to 2006.

Overall the gender gap in Leicestershire is narrowing in English due to a 3% decline in girls 5+ attainment to 86% and a 5% decline to 45% at 6+. Nationally the gap is narrowing for the same reason at 6+ but the decline in girls' performance is less pronounced, at 5+ it is narrowing nationally due to improvements by boys. Large improvements in boys Reading have been made whereas both girls and boys Writing has declined with girls declining to a greater degree.

The Maths and Science gender gaps in Leicestershire are expanding in favour of boys due to their continued strong performance. In Science Leicestershire continues to be stronger performing in favour of boys whereas nationally the trend is the opposite with girls outperforming boys.

Overall by gender Leicestershire performs significantly better than the national average in English, Maths Science.

Leicestershire in virtually all ethnic groups significantly outperforms the national averages across English, Maths and Science at 5+.

Subject commentary:

English

English performance at 5+ remains consistent with last year at 82% compared to a national 1% improvement to 74%. At 6+ attainment a 2% decline to 39% was mirrored by an even larger decline nationally of 3% to 32%. The performance of girls at 5+ in Leicestershire went against the national trend with performance declining by 3% whereas nationally it remained stable at 80%. Overall the gender gap is narrowing at 5+ and 6+ attainment thresholds locally and nationally.

Overall Leicestershire performs significantly better than the national benchmarks by gender and by each ethnic group.

Reading

A 3% improvement from last year at 5+ to 80% has occurred, this is the highest ever level recorded for these tests in Leicestershire. Nationally a 5% increase occurred at this threshold measure. The 6+ test outcomes have remained stable this year locally and nationally. Leicestershire continues to perform well above the national comparators from 5+ to 7+ across genders.

The attainment picture though is mixed between genders, the gender gap in favour of girls is significantly narrowing across 5+ to 7+. This is due to a 5% improvement at 5+ by boys and 3% at 6+. The trend of 5+ boys improvement was mirrored nationally in both boys and girls but the 6+ improvement in boys was different to the national trend of stability. Overall though Reading tests still produce the largest differential by gender across English, Maths, Science, Reading and Writing.

Writing

In 2007 Writing at 5+ declined by 3% to 83%, which was the same as the national decline. This is the lowest level of 5+ attainment since 2003. At 6+ a 4% decline occurred locally to 28% which again was mirrored nationally. This also is the lowest level of 6+ attainment since 2003. Leicestershire by gender still performs significantly better than the national comparators from 5+ to 7+.

The gender gap in Leicestershire has narrowed in the light of this decline in performance from 5+ to 7+ due to boys declining at a slower rate than girls. This trend can be observed both locally and nationally.

Mathematics

Girls' performance in Leicestershire declined by 2% across 5+ to 7+ attainment measures, this trend was largely mirrored nationally. Boys' performance also largely followed the national trend of a 1% decline or stability between 5+ and 7+. Boys' attainment locally and nationally continues to be greater than girls in this subject.

Overall Leicestershire performs significantly better than the national benchmarks by gender and by each ethnic group.

Science

Leicestershire in 2007 has mirrored the national trend of slightly improving/stable performance against the 5+ and 6+ performance measures. At 7+ Leicestershire raised attainment by 2% to 21% compared to no change nationally. Science locally continues to be our strongest performing subject as a whole against national indicators. It is also the only core subject where the national gender performance is reversed with boys outperforming girls.

Overall Leicestershire performs significantly better than the national benchmarks by gender and by each ethnic group.

ICT

Locally and nationally large improvements have occurred across the 5+ to 7+ assessment measures. Assessment rates at 5+ have increased by 4% from last year to 83% in comparison to a national 3% increase, and at 6+ a 5% local increase has occurred to 26% compared to a national 3% increase. The improvements at 5+ to 7+ are being made across both genders, the gender gap remains largely in favour of girls but is narrowing at the 5+ assessment threshold.

The Leicestershire 5+ teacher assessment level is above the national level by 9% but our 6+ assessment rates, despite the large improvements, continue our historic trend of being below the national average. This same trend is in place at 7+ as well. This trend does not exist in English, Maths, Science and Reading and Writing tests.

Other Foundation Subjects

Year on Year improvements continue at the 5+ assessment threshold across all Foundation subjects to varying degrees apart from Music which at both 5+ and 6+ has shown no improvement since 2005. The 6+ assessment rates are showing varying degrees of improvement with all but Design and Technology, History and Music making improvements. Assessment rates at 7+ both locally and nationally continue to remain at stable levels.

By gender girls continue to significantly outperform boys in all foundation subjects apart from PE with the differential between assessment rates being greatest at 6+ in comparison to 5+. Art, Design and Technology, and Languages show the greatest levels of differential in favour of girls.

855 Leicestershire

Percentage of 14 Year olds in school : Levels of Attainment

Boys	Other	1	2	3	4	5	6	7	8	E	Level 5 & above	Level 6 & above	Level 7 & above
English Teacher Assessment	1	0	1	4	17	44	27	7	0	0	78%	34%	7%
English Test	8	0	0	2	13	45	25	7	0	0	77%	32%	7%
Reading Test	12	0	0	0	12	42	24	9	0	0	75%	33%	9%
Writing Test	10	0	0	0	15	43	23	9	0	0	75%	32%	9%
Mathematics Teacher Assessment	1	0	1	3	10	21	30	26	8	0	86%	64%	34%
Mathematics Test	3	0	0	3	10	17	30	27	11	0	84%	67%	37%
Science Teacher Assessment	1	0	1	2	13	35	35	14	0	0	84%	49%	14%
Science Test	3	0	0	2	12	30	32	21	0	0	84%	53%	21%
ICT Teacher Assessment	1	0	0	2	18	57	21	2	0	0	79%	22%	2%

Girls	Other	1	2	3	4	5	6	7	8	E	Level 5 & above	Level 6 & above	Level 7 & above
English Teacher Assessment	0	0	1	2	10	37	39	11	0	0	87%	50%	11%
English Test	5	0	0	1	7	41	33	13	0	0	86%	45%	13%
Reading Test	7	0	0	0	7	40	31	15	0	0	86%	46%	15%
Writing Test	5	0	0	0	10	40	31	14	0	0	85%	45%	14%
Mathematics Teacher Assessment	0	0	0	3	10	23	32	24	7	0	86%	63%	31%
Mathematics Test	2	0	0	3	11	20	31	24	8	0	83%	64%	32%
Science Teacher Assessment	1	0	0	2	13	37	34	13	0	0	84%	47%	13%
Science Test	2	0	0	2	12	33	30	20	0	0	83%	50%	20%
ICT Teacher Assessment	1	0	0	1	12	57	27	2	0	0	86%	29%	2%

Boys & Girls	Other	1	2	3	4	5	6	7	8	E	Level 5 & above	Level 6 & above	Level 7 & above
English Teacher Assessment	1	0	1	3	14	41	33	9	0	0	82%	42%	9%
English Test	6	0	0	2	10	43	29	10	0	0	82%	39%	10%
Reading Test	10	0	0	0	10	41	28	12	0	0	80%	39%	12%
Writing Test	8	0	0	0	13	42	27	11	0	0	80%	38%	11%
Mathematics Teacher Assessment	1	0	0	3	10	22	31	25	7	0	86%	64%	32%
Mathematics Test	2	0	0	3	10	18	30	25	9	0	84%	65%	35%
Science Teacher Assessment	1	0	0	2	13	36	34	13	0	0	84%	48%	13%
Science Test	3	0	0	2	12	32	31	21	0	0	83%	52%	21%
ICT Teacher Assessment	1	0	0	2	15	57	24	2	0	0	83%	26%	2%

		Average Level	Average Point Score
Boys	English Test	5.6	33.6
	Reading Test	5.6	33.5
	Writing Test	5.6	33.6
	Mathematics Test	6.5	38.7
	Science Test	6.1	36.3
	ICT Teacher Assessment	5.5	33.0
	Girls	English Test	5.9
Reading Test		5.9	35.6
Writing Test		5.5	35.5
Mathematics Test		6.3	38.0
Science Test		6.0	36.0
ICT Teacher Assessment		5.7	34.0
Boys & Girls	English Test	5.8	34.6
	Reading Test	5.7	34.5
	Writing Test	5.8	34.5
	Mathematics Test	6.4	38.4
	Science Test	5.7	36.2
	ICT Teacher Assessment	5.6	33.5

Notes:

Core Test/Task data based on DCSF datafeed August 2007. Foundation subject data based on Schools TA submission June/July 2007

'Other' refers to pupils who were absent, disapplied, took the statutory tests but failed to register a level and those working at a level below that assessed by the tests.

Pupils achieving a grade "B" or "N" in Maths and Science have been scored as gaining a Level 2 or 15 points.

Pupils achieving a grade "B" or "N" in English have been scored as gaining a Level 3 or 21 points.

Average Level reflects the true fine grading of point scores, e.g. 33 points represents Level 5.5 and 39 points represents Level 6.5 etc.

855 Leicestershire

Percentage of 14 Year olds in school : Levels of Attainment

Boys	Other	1	2	3	4	5	6	7	8	EP	Level 5 & above	Level 6 & above	Level 7 & above
Art	1	1	0	1	16	53	25	4	0	0	81%	28%	4%
Design	1	0	0	1	15	57	23	2	0	0	83%	26%	3%
Geography	1	0	0	1	16	44	31	6	1	0	82%	37%	7%
History	1	0	0	2	16	45	29	7	0	0	82%	36%	8%
Languages	1	0	2	7	23	39	24	3	1	0	66%	27%	4%
Music	1	0	0	1	21	53	20	3	1	0	76%	24%	4%
P.E.	1	0	0	1	9	44	35	9	1	0	89%	45%	10%

Girls	Other	1	2	3	4	5	6	7	8	EP	Level 5 & above	Level 6 & above	Level 7 & above
Art	1	0	0	0	5	38	44	10	1	0	94%	55%	11%
Design	0	0	0	0	6	45	42	6	0	0	93%	48%	6%
Geography	0	0	0	1	10	41	36	11	1	0	88%	48%	12%
History	0	0	0	1	9	40	37	11	1	0	90%	49%	13%
Languages	1	0	1	4	14	40	32	7	1	0	80%	40%	8%
Music	1	0	0	0	13	51	29	5	1	0	86%	35%	6%
P.E.	1	0	0	1	12	57	25	4	0	0	86%	29%	4%

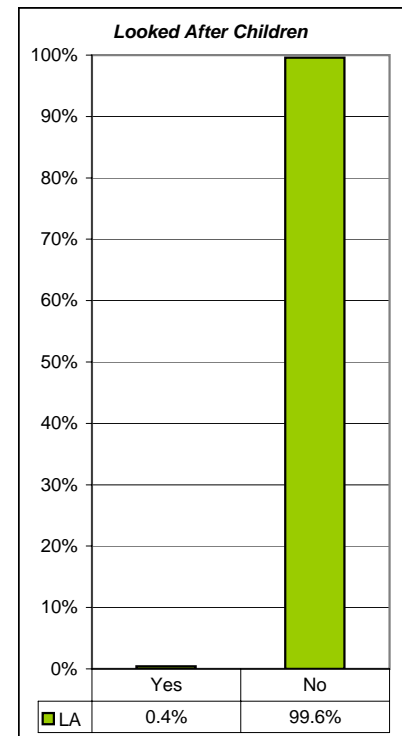
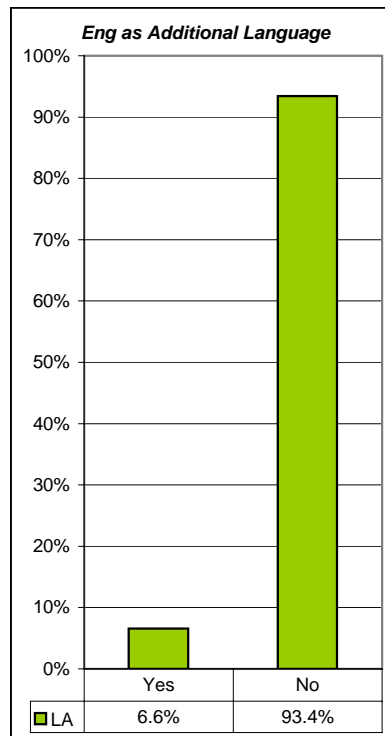
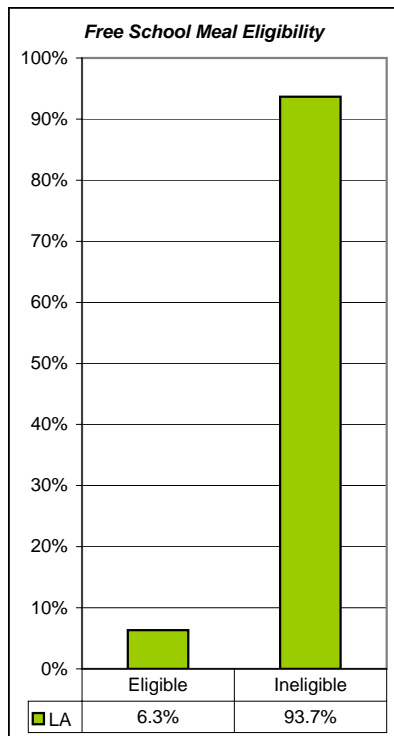
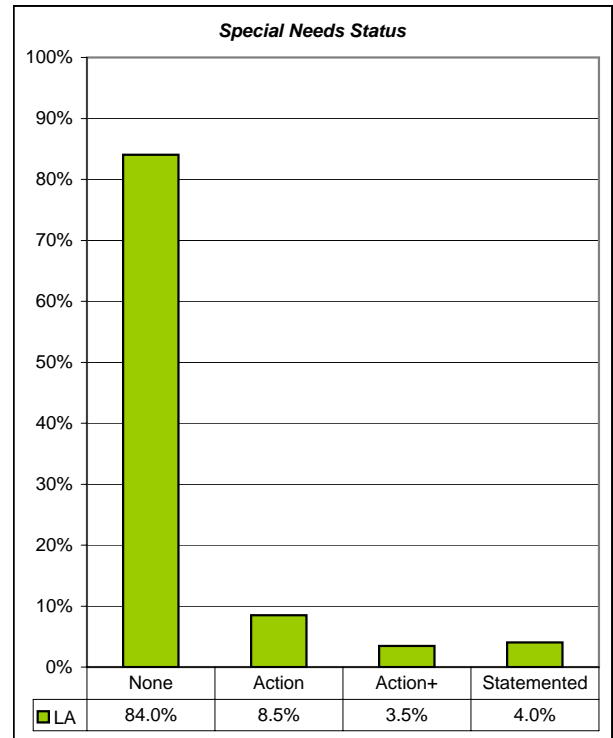
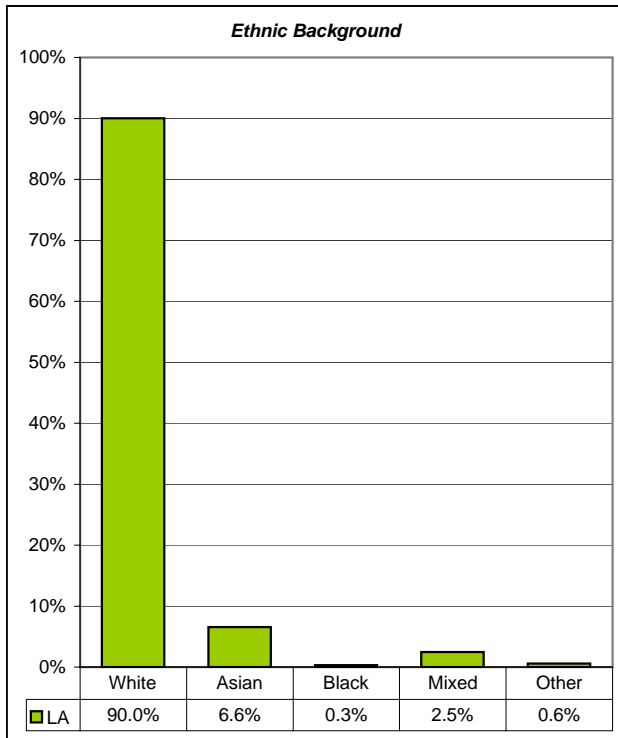
Boys & Girls	Other	1	2	3	4	5	6	7	8	EP	Level 5 & above	Level 6 & above	Level 7 & above
Art	1	0	0	1	11	46	34	7	0	0	88%	42%	7%
Design	1	0	0	1	11	51	32	4	0	0	88%	37%	4%
Geography	1	0	0	1	13	42	33	9	1	0	85%	43%	9%
History	1	0	0	1	12	43	33	9	1	0	85%	43%	10%
Languages	1	0	2	6	19	39	28	5	1	0	73%	34%	6%
Music	1	0	0	1	17	52	24	4	1	0	81%	29%	5%
P.E.	1	0	0	1	10	50	30	7	0	0	88%	37%	7%

		Average Level	Average Point Score
Boys	Art	5.6	33.7
	Design	5.6	33.6
	Geography	5.7	34.5
	History	5.7	34.4
	Languages	5.4	32.2
	Music	5.5	33.1
	P.E.	5.9	35.7
Girls	Art	6.1	36.7
	Design	6.0	35.9
	Geography	6.0	35.9
	History	6.0	36.1
	Languages	5.7	34.4
	Music	5.8	34.7
	P.E.	5.7	34.2
Boys & Girls	Art	5.9	35.2
	Design	5.8	34.7
	Geography	5.9	35.2
	History	5.9	35.3
	Languages	5.5	33.3
	Music	5.7	33.9
	P.E.	5.8	34.9

Foundation subject data based on Schools TA submission June/July 2007

Key Stage Three Results 2007: School Census 2007 Contextual Data

855 Leicestershire [Matched Pupils: 100%]



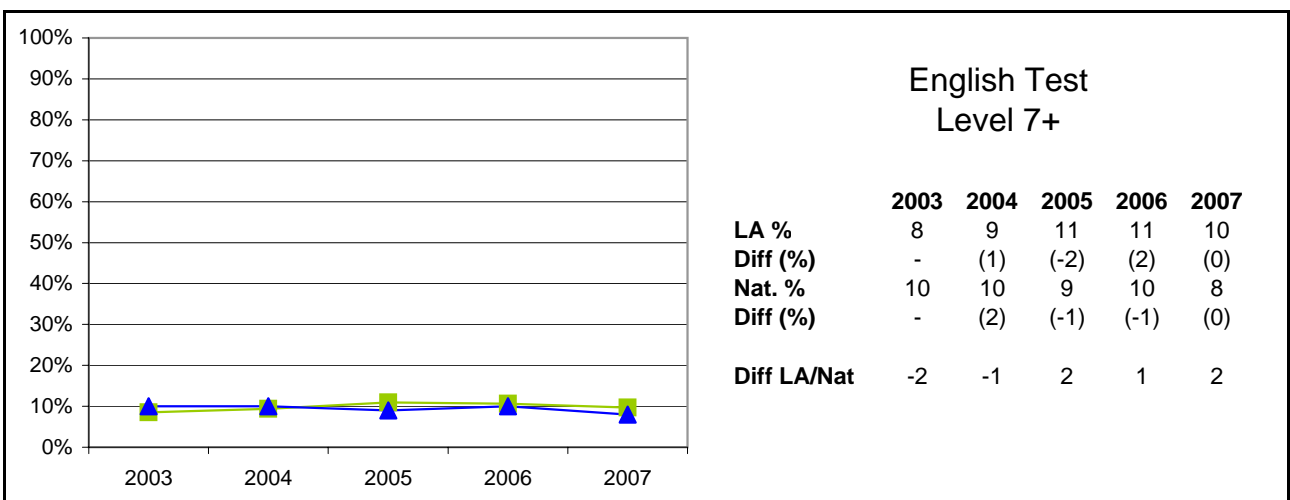
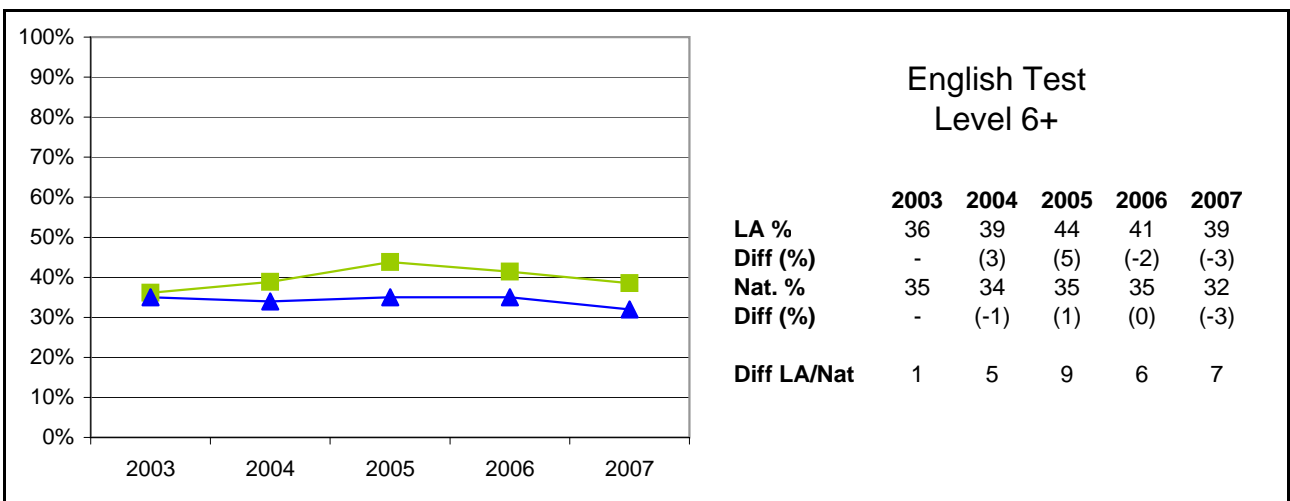
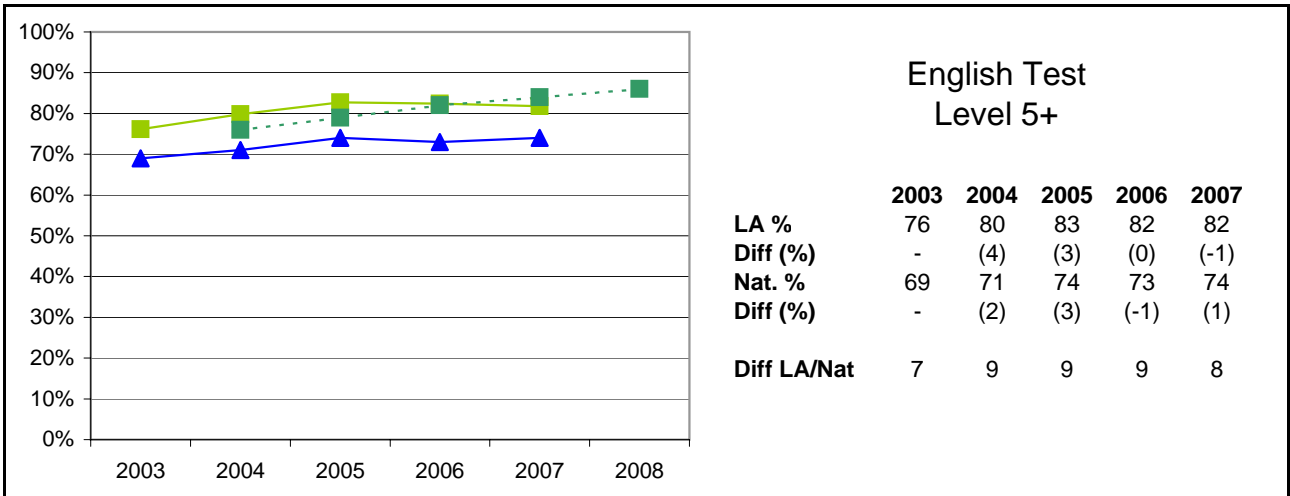
Notes:

The contextual data relates to the Key Stage 3 Cohort only

Ethnic Background does not include Refused and Information Not Obtained Classified pupils

Key Stage Three Results 2003 - 2007

855 Leicestershire



Notes:

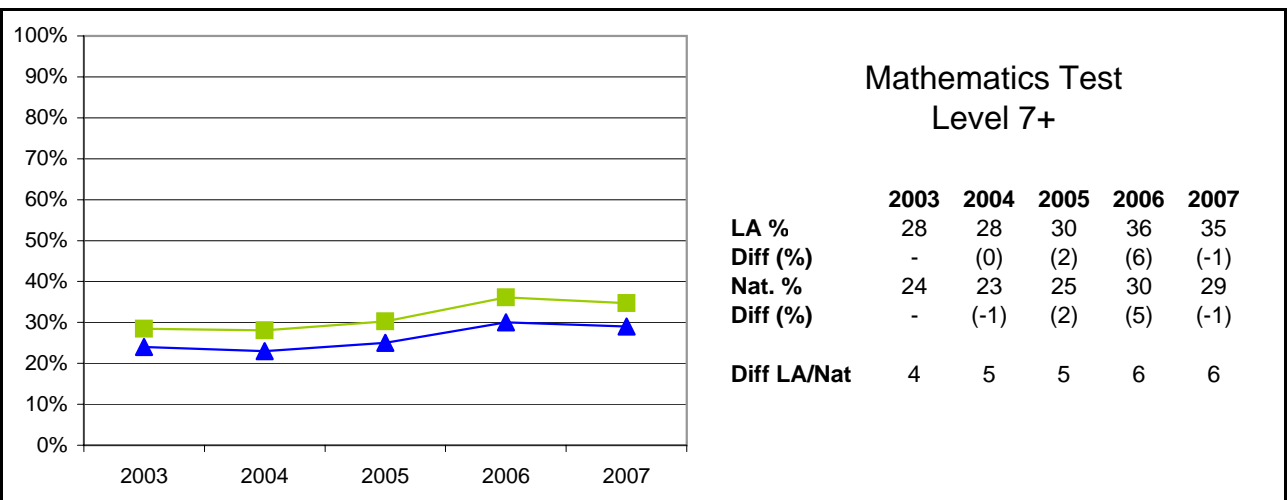
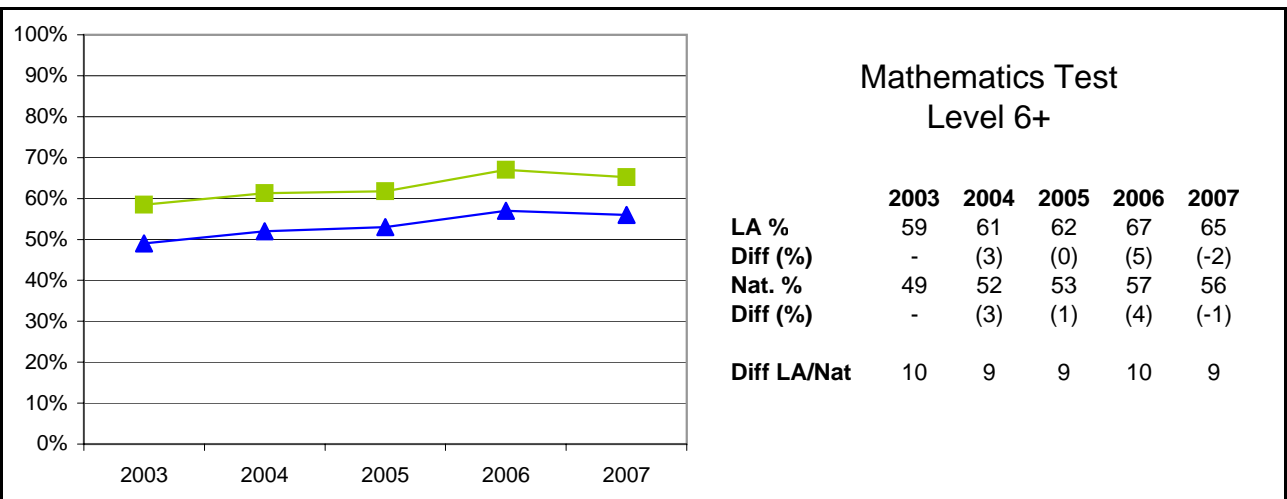
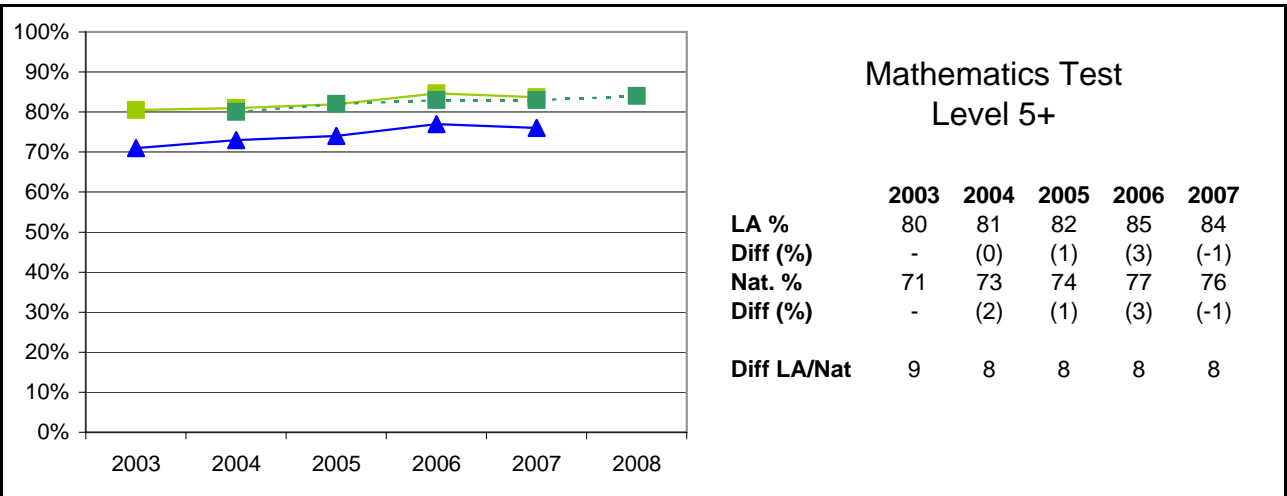
Figures derived from August 2007 DCSF information.

National figures obtained from DCSF information published within SFR 25/2007, National Curriculum Assessments at Key Stage 3 in England, 2007 (Provisional)

LA data for each year relates to all Schools (including Special Schools & the PRU). National data relates to all Schools (including Special Schools) but not PRUs

Key Stage Three Results 2003 - 2007

855 Leicestershire



Notes:

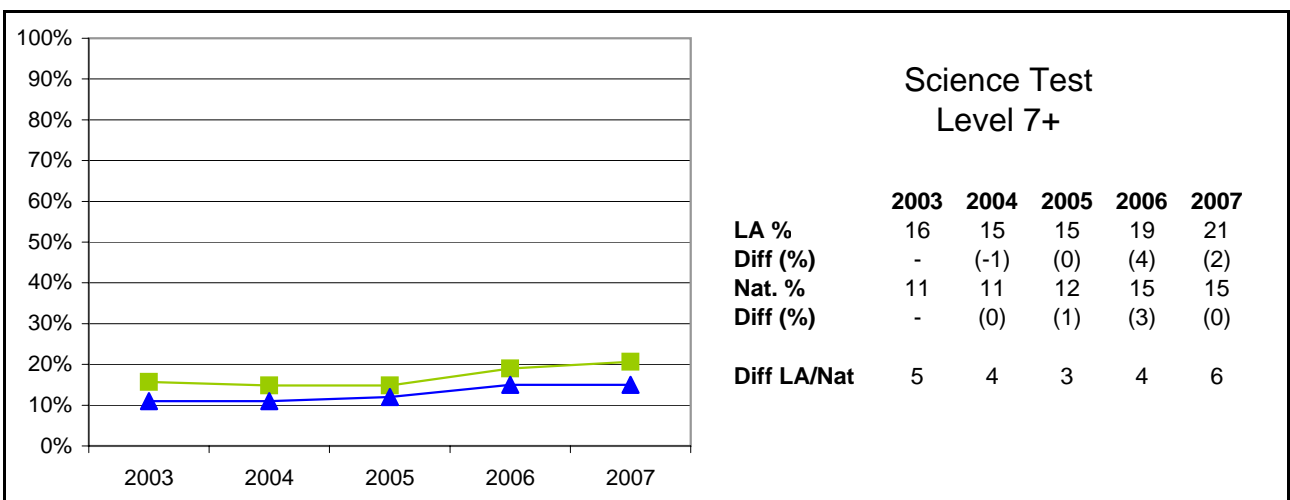
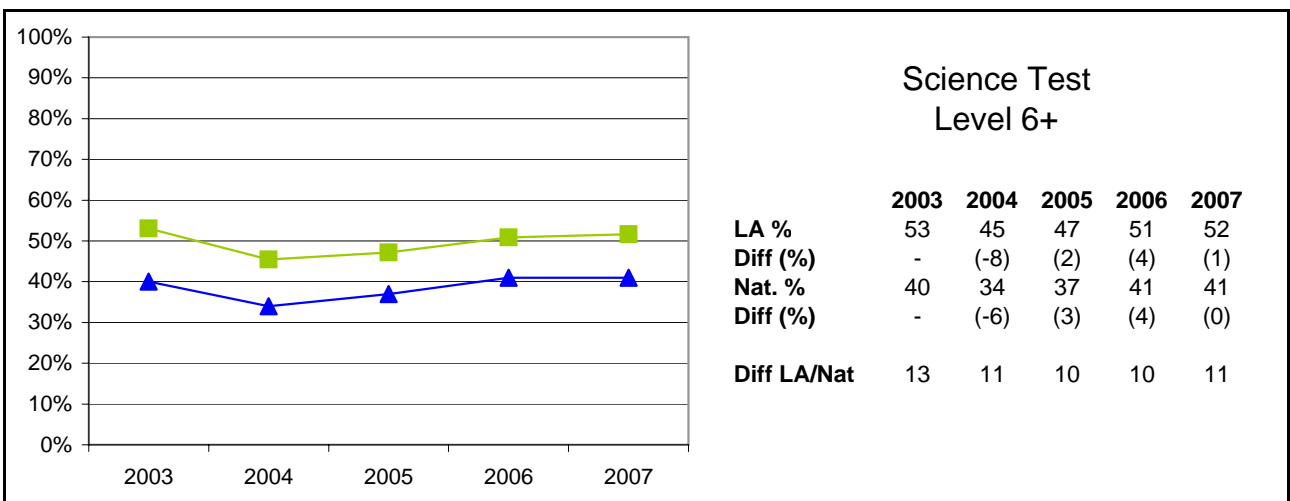
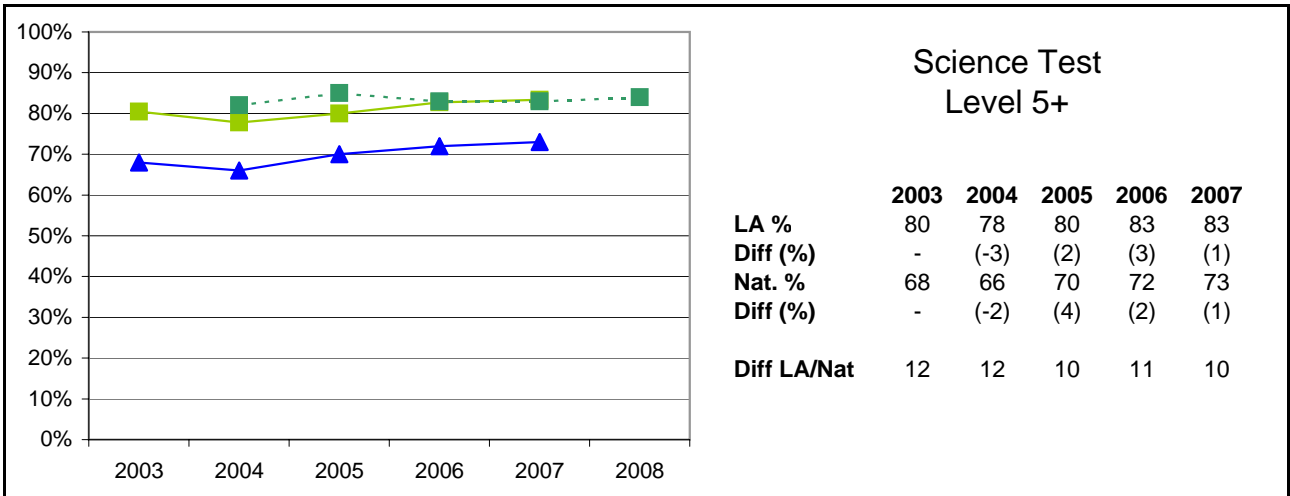
Figures derived from August 2007 DCSF information.

National figures obtained from DCSF information published within SFR 25/2007, National Curriculum Assessments at Key Stage 3 in England, 2007 (Provisional)

LA data for each year relates to all Schools (including Special Schools & the PRU). National data relates to all Schools (including Special Schools) but not PRUs

Key Stage Three Results 2003 - 2007

855 Leicestershire



Notes:

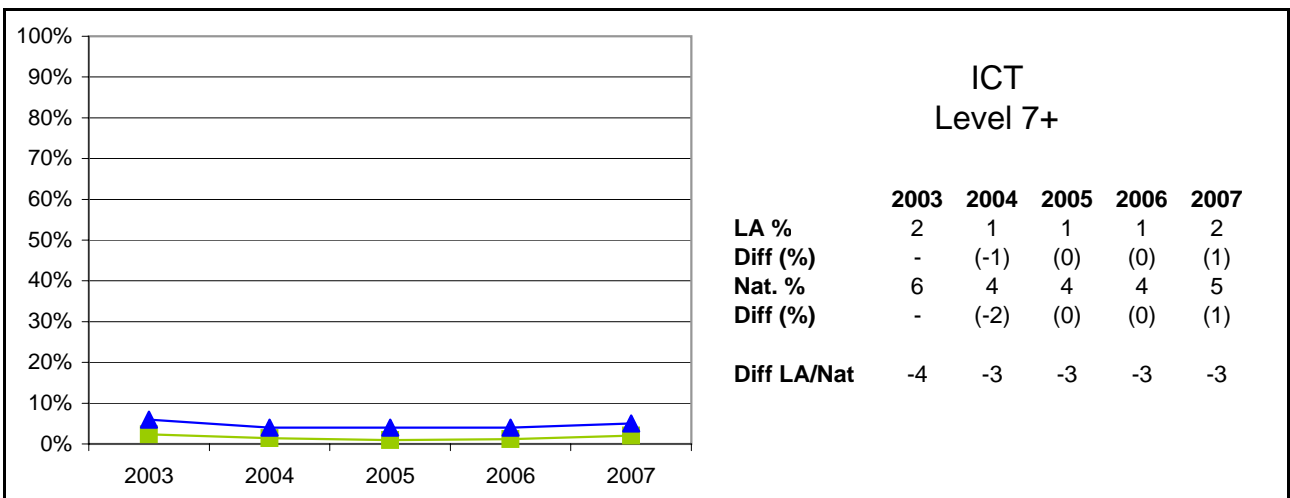
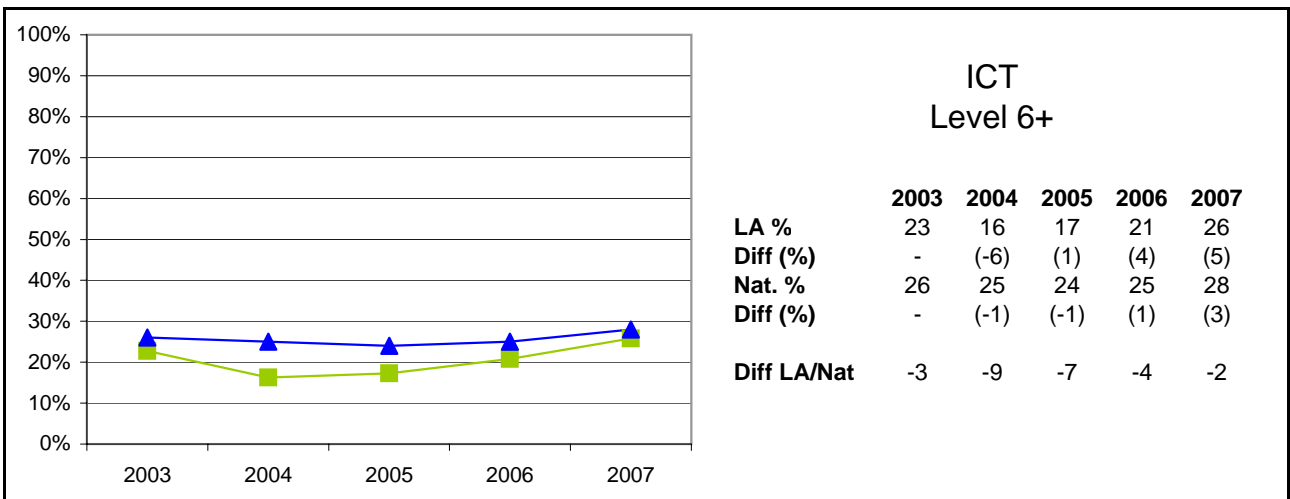
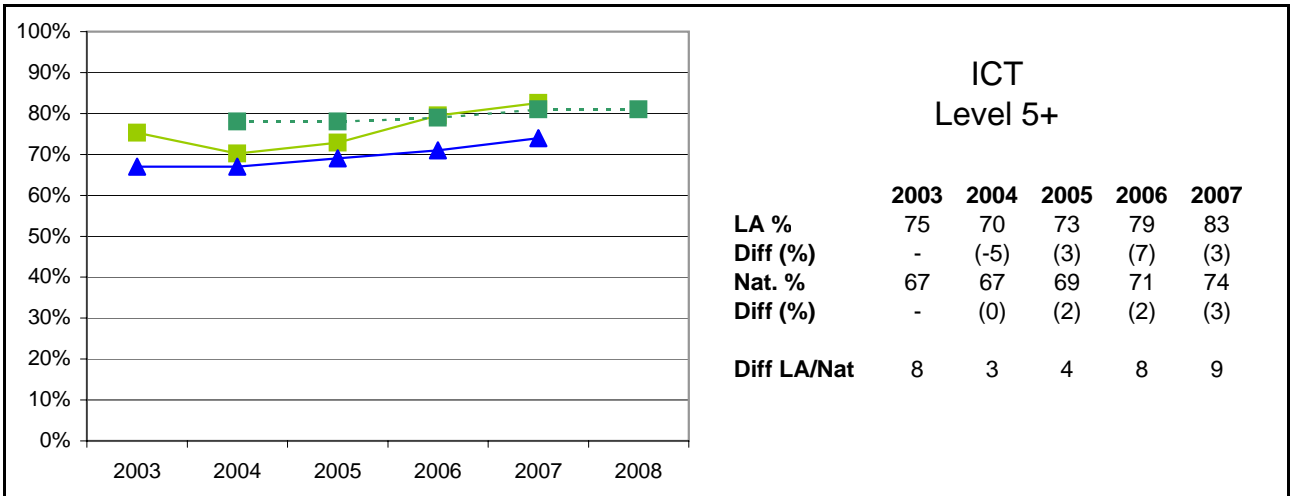
Figures derived from August 2007 DCSF information.

National figures obtained from DCSF information published within SFR 25/2007, National Curriculum Assessments at Key Stage 3 in England, 2007 (Provisional)

LA data for each year relates to all Schools (including Special Schools & the PRU). National data relates to all Schools (including Special Schools) but not PRUs

Key Stage Three Results 2003 - 2007

855 Leicestershire



Notes:

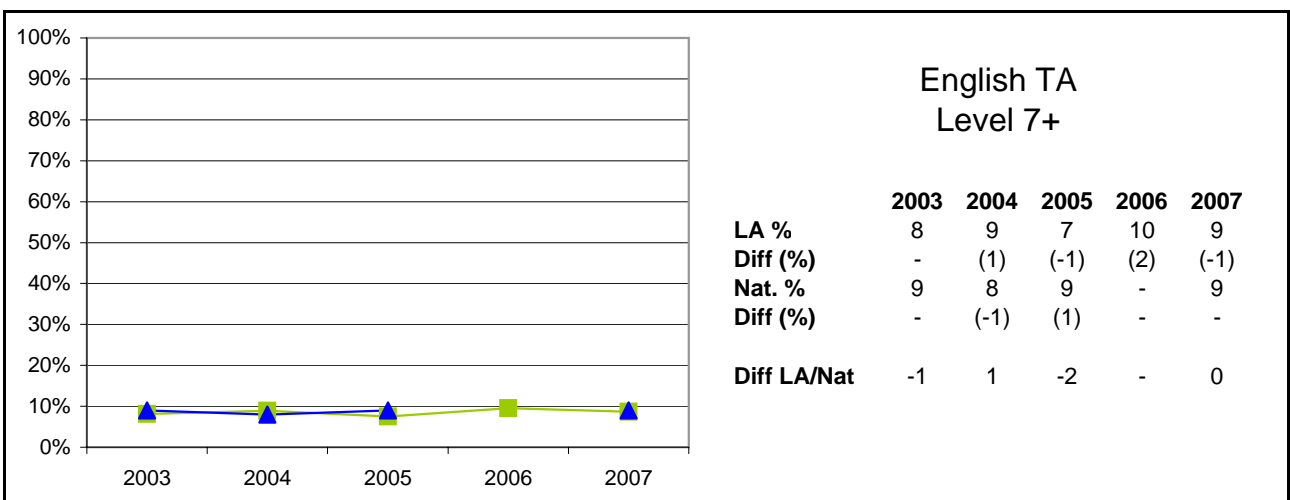
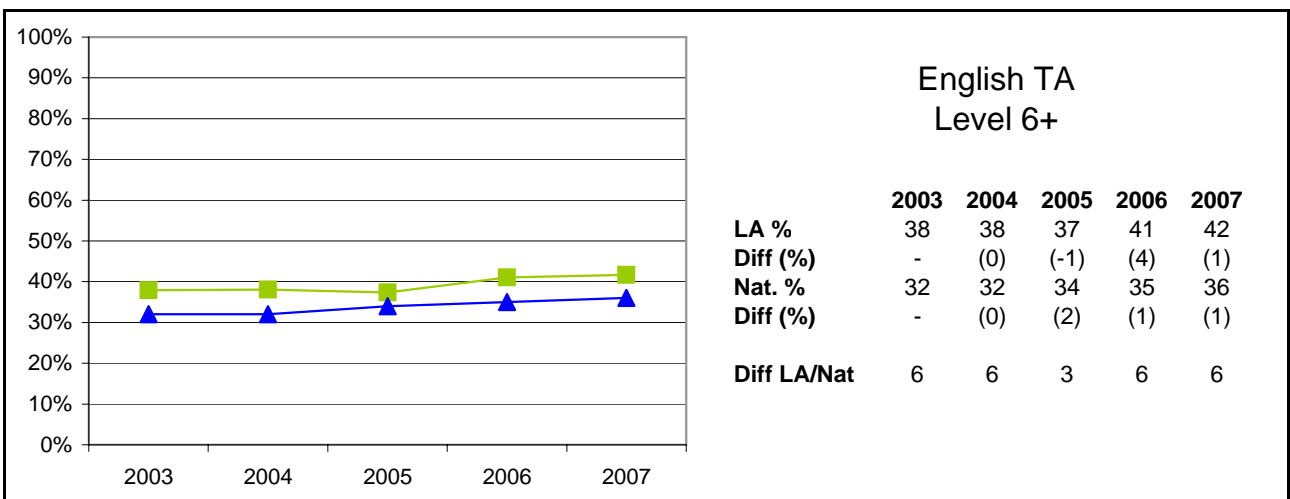
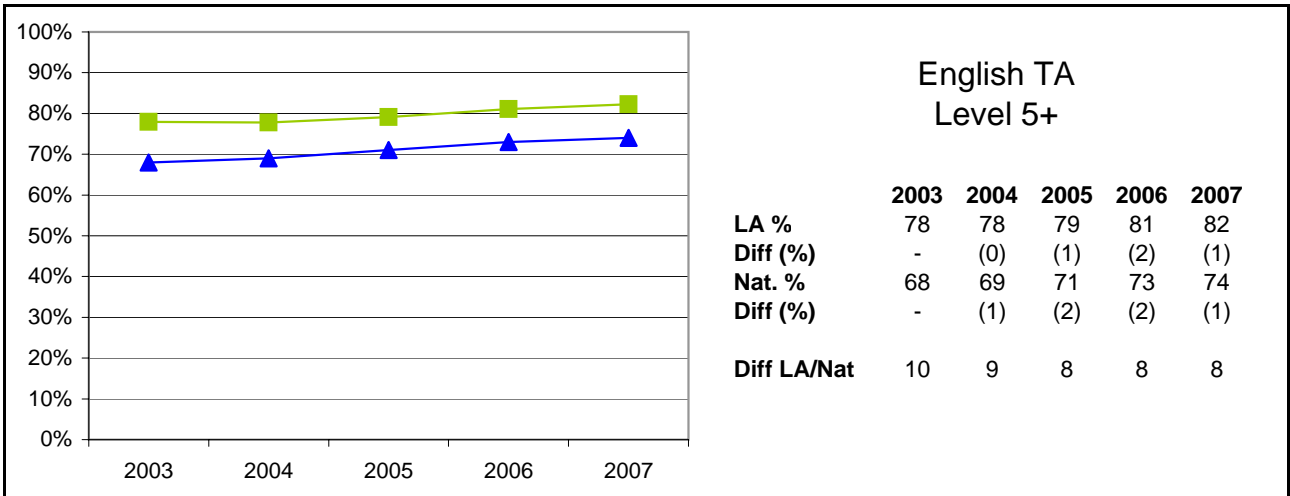
Figures derived from August 2007 DCSF information.

National figures obtained from DCSF information published within SFR 25/2007, National Curriculum Assessments at Key Stage 3 in England, 2007 (Provisional)

LA data for each year relates to all Schools (including Special Schools & the PRU). National data relates to all Schools (including Special Schools) but not PRUs

Key Stage Three Results 2003 - 2007

855 Leicestershire



Notes:

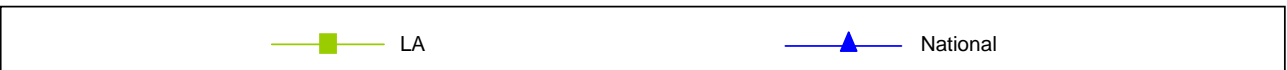
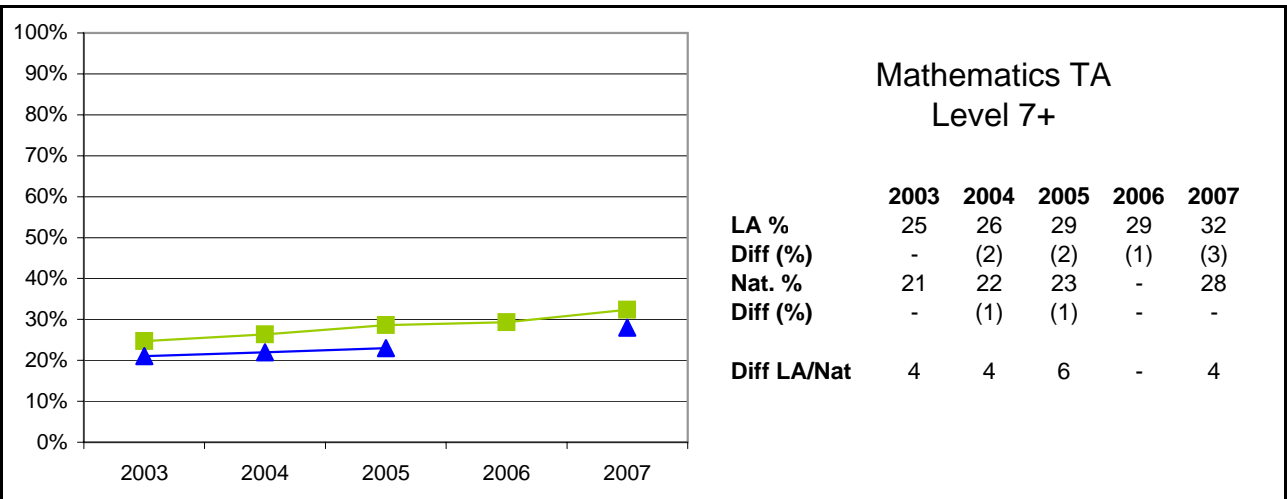
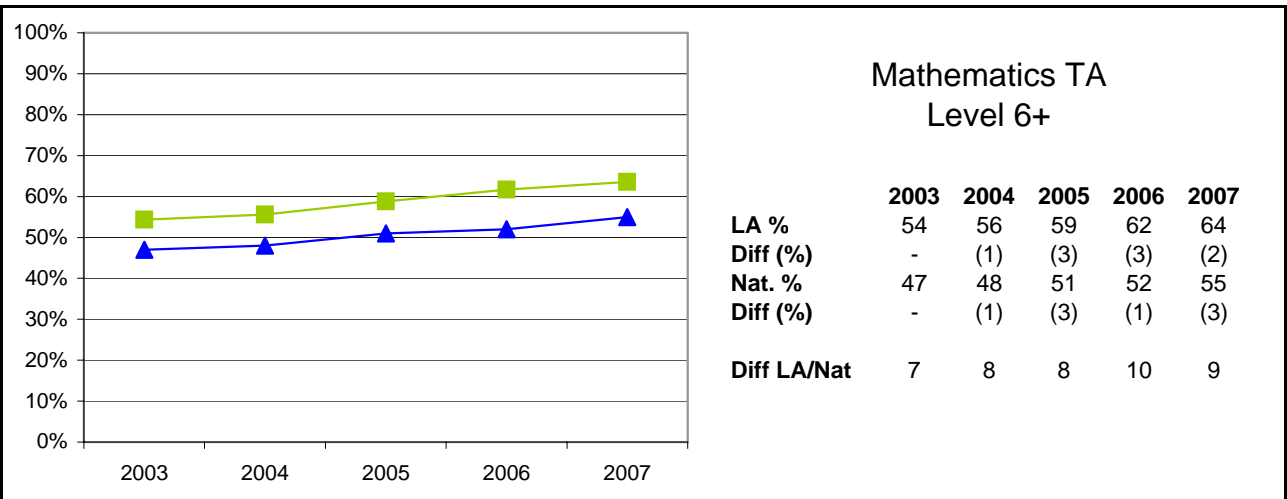
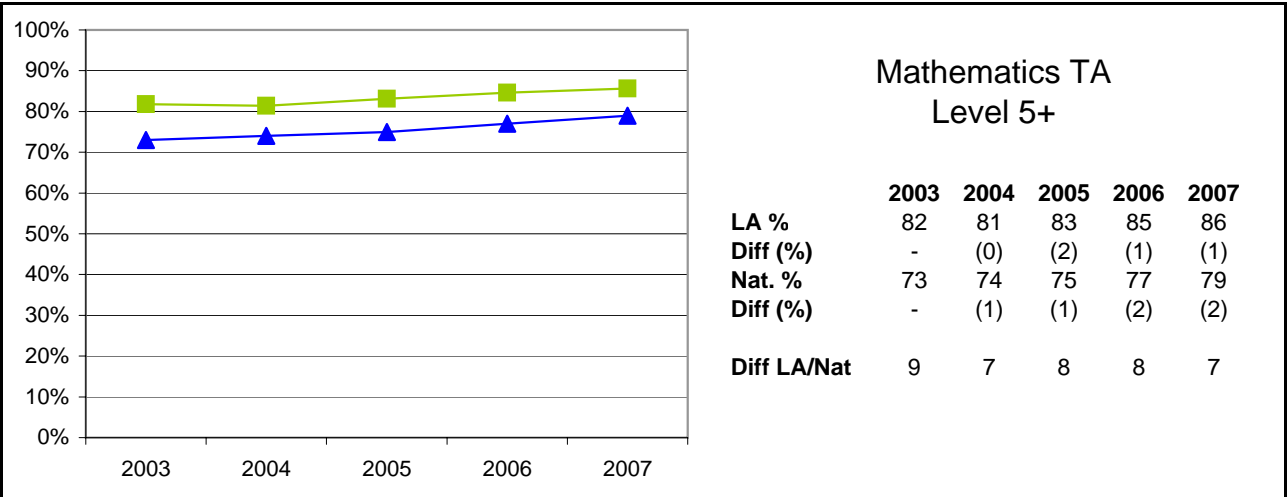
Figures derived from August 2007 DCSF information.

National figures obtained from DCSF information published within SFR 25/2007, National Curriculum Assessments at Key Stage 3 in England, 2007 (Provisional)

LA data for each year relates to all Schools (including Special Schools & the PRU). National data relates to all Schools (including Special Schools) but not PRUs

Key Stage Three Results 2003 - 2007

855 Leicestershire



Notes:

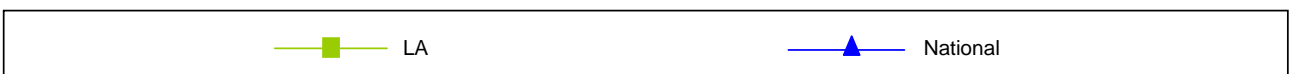
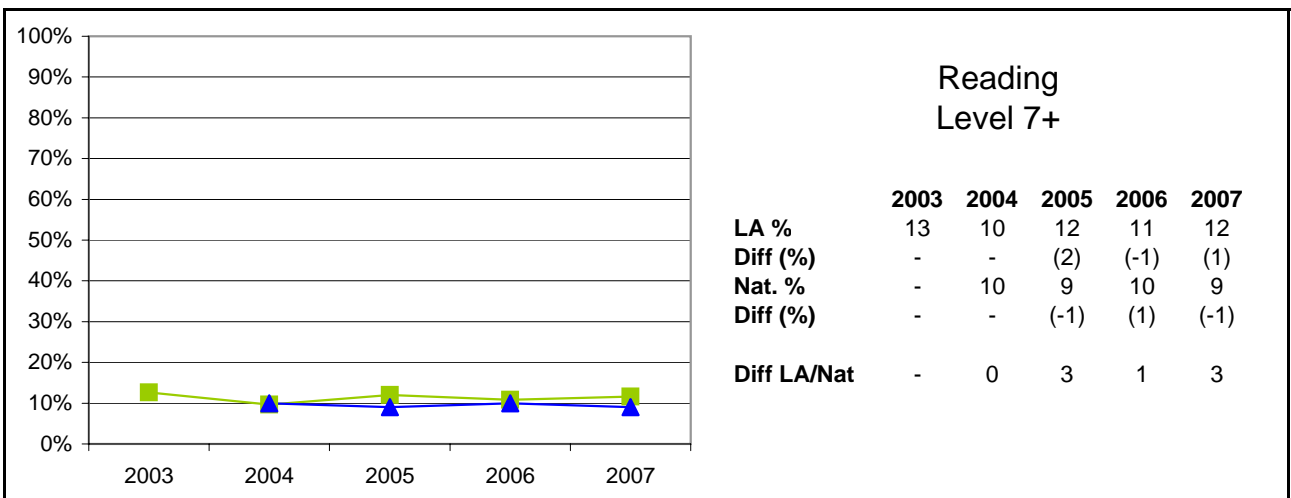
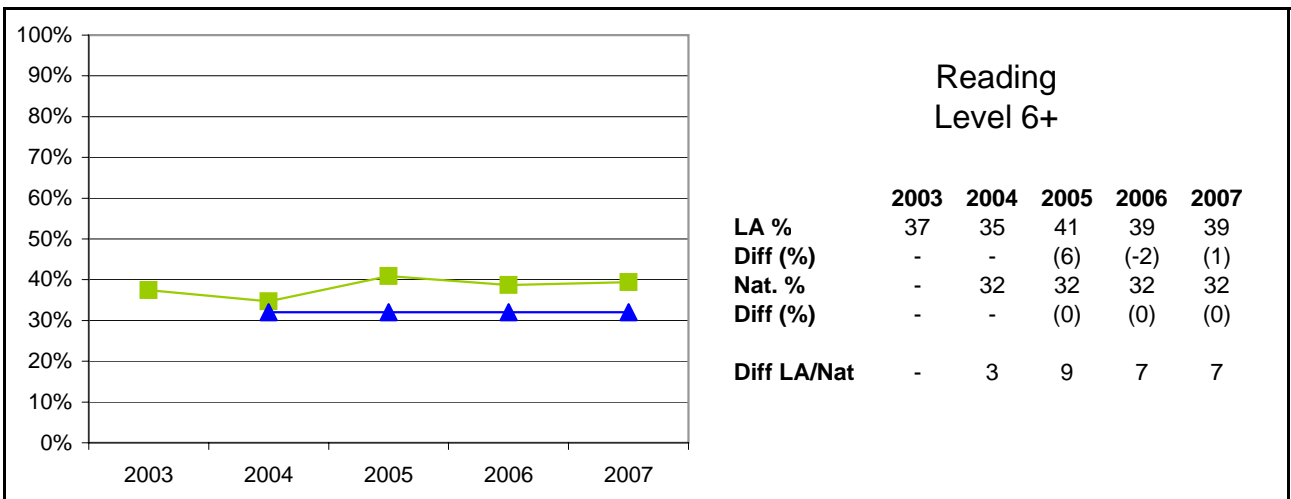
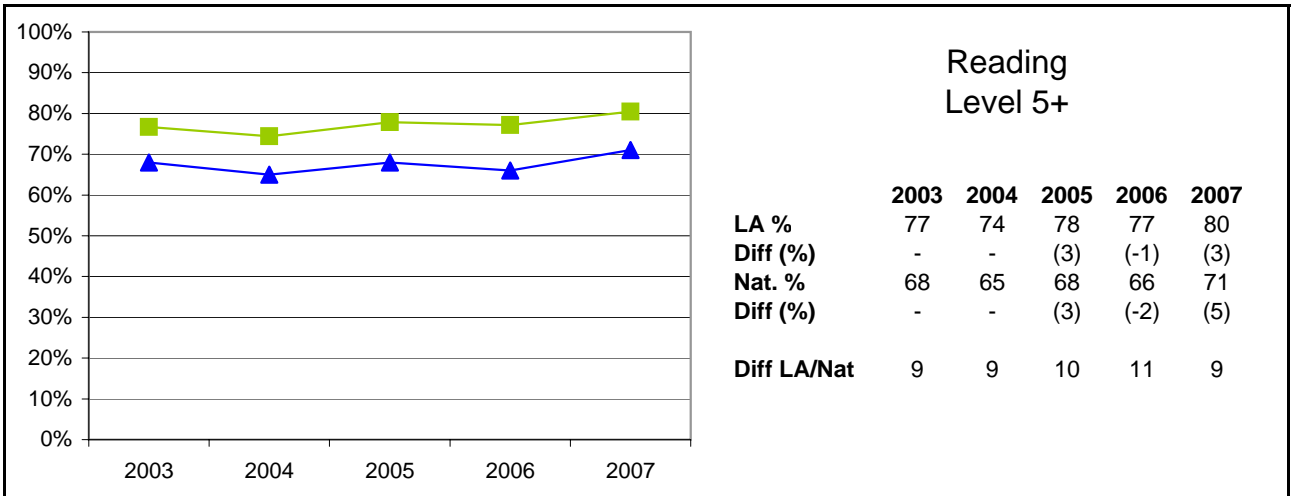
Figures derived from August 2007 DCSF information.

National figures obtained from DCSF information published within SFR 25/2007, National Curriculum Assessments at Key Stage 3 in England, 2007 (Provisional)

LA data for each year relates to all Schools (including Special Schools & the PRU). National data relates to all Schools (including Special Schools) but not PRUs

Key Stage Three Results 2003 - 2007

855 Leicestershire



Notes:

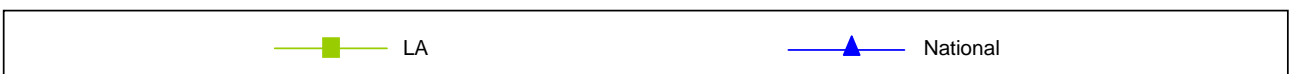
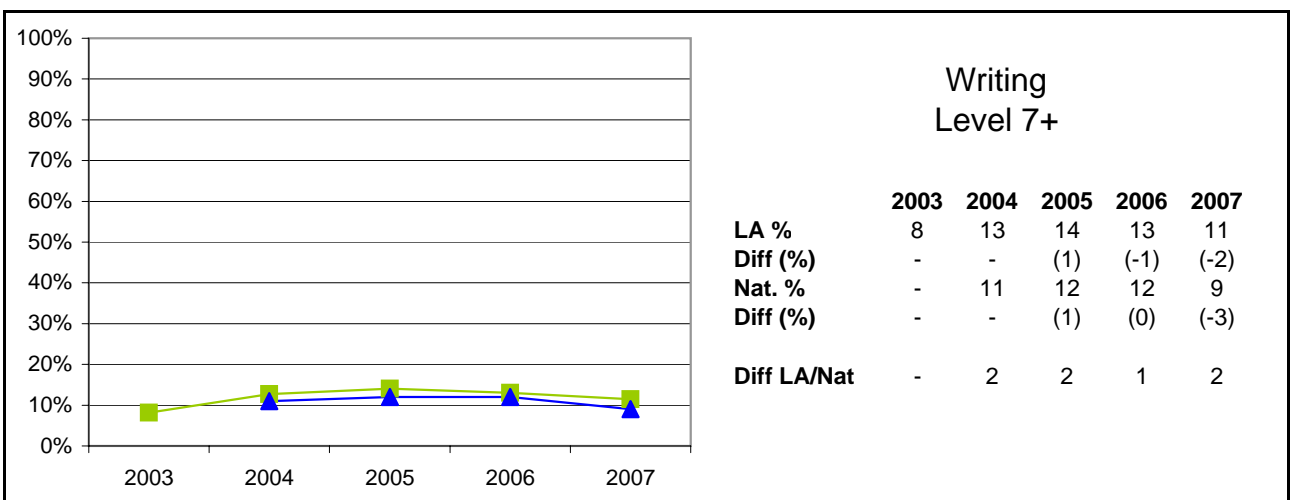
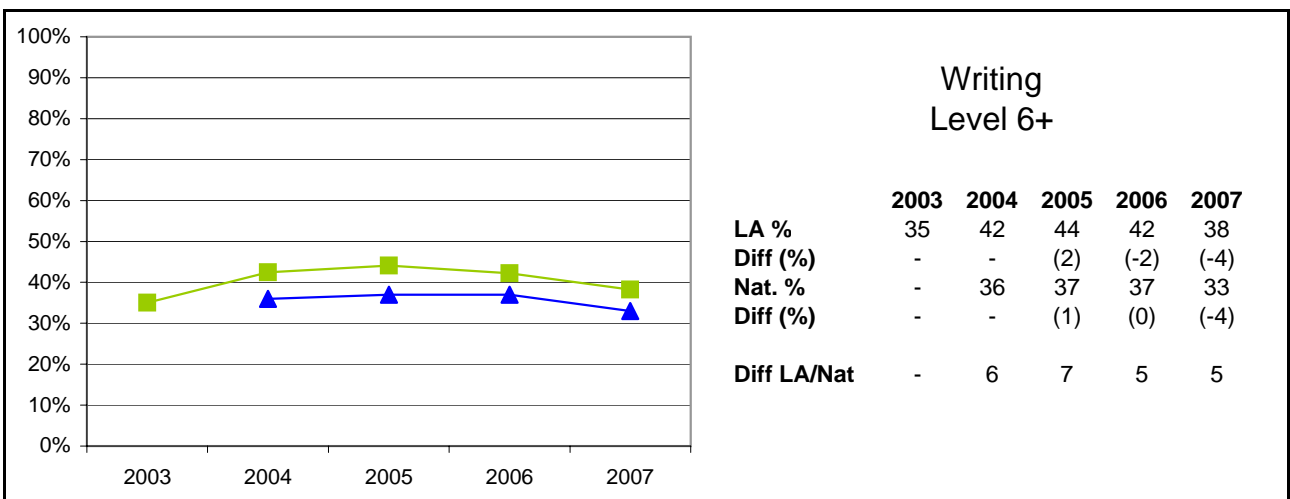
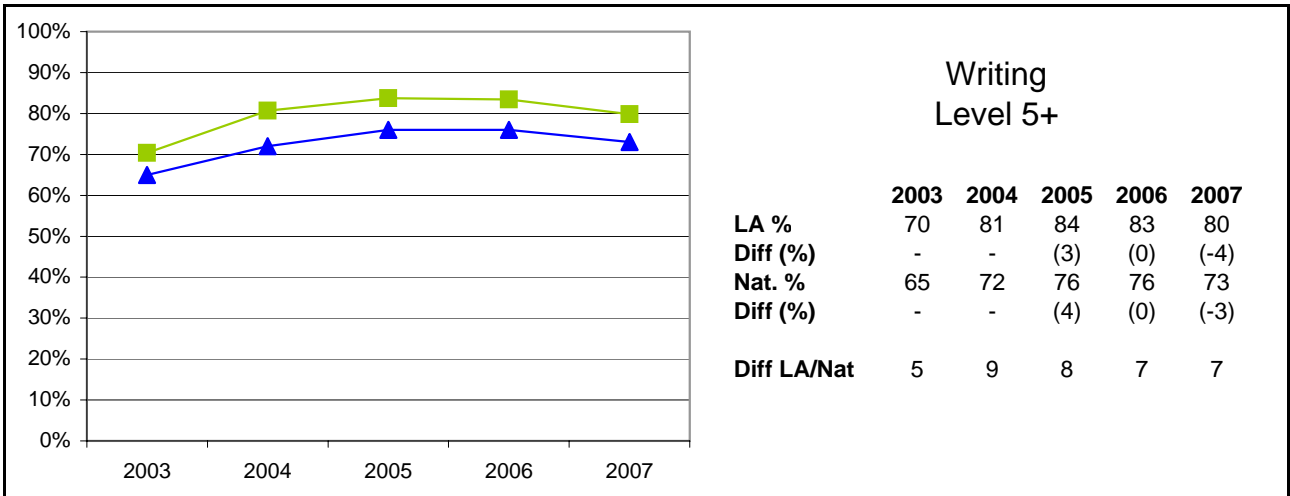
Figures derived from August 2007 DCSF information.

National figures obtained from DCSF information published within SFR 25/2007, National Curriculum Assessments at Key Stage 3 in England, 2007 (Provisional)

LA data for each year relates to all Schools (including Special Schools & the PRU). National data relates to all Schools (including Special Schools) but not PRUs

Key Stage Three Results 2003 - 2007

855 Leicestershire



Notes:

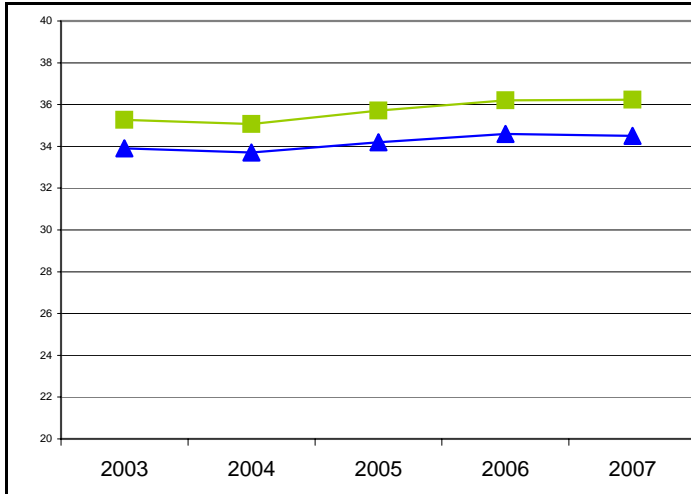
Figures derived from August 2007 DCSF information.

National figures obtained from DCSF information published within SFR 25/2007, National Curriculum Assessments at Key Stage 3 in England, 2007 (Provisional)

LA data for each year relates to all Schools (including Special Schools & the PRU). National data relates to all Schools (including Special Schools) but not PRUs

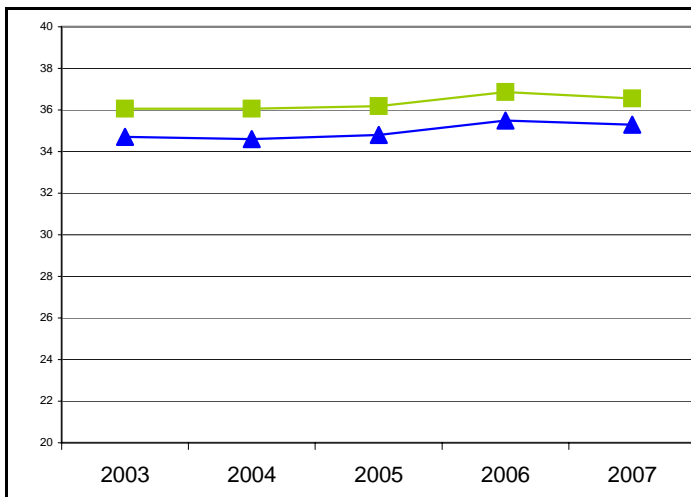
Key Stage Three Results 2003 - 2007

855 Leicestershire



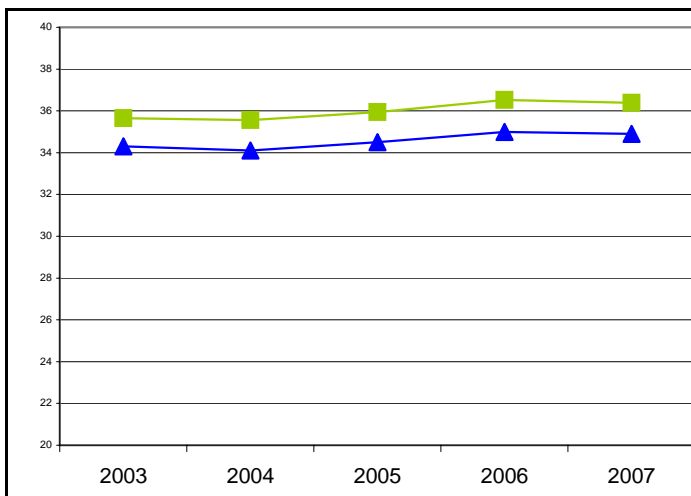
Boys Average Point Score

	2003	2004	2005	2006	2007
LEA %	35.3	35.1	35.7	36.2	36.2
Diff (%)	-	(-0.2)	(0.6)	(0.5)	(0)
Nat. %	33.9	33.7	34.2	34.6	34.5
Diff (%)	-	(-0.2)	(0.5)	(0.4)	(-0.1)
Diff LEA/Nat	1.4	1.4	1.5	1.6	1.7



Girls Average Point Score

	2003	2004	2005	2006	2007
LEA %	36.1	36.1	36.2	36.9	36.6
Diff (%)	-	(0)	(0.1)	(0.7)	(-0.3)
Nat. %	34.7	34.6	34.8	35.5	35.3
Diff (%)	-	(-0.1)	(0.2)	(0.7)	(-0.2)
Diff LEA/Nat	1.4	1.5	1.4	1.4	1.3



Overall Average Point Score

	2003	2004	2005	2006	2007
LEA %	35.7	35.6	35.9	36.5	36.4
Diff (%)	-	(-0.1)	(0.4)	(0.6)	(-0.1)
Nat. %	34.3	34.1	34.5	35.0	34.9
Diff (%)	-	(-0.2)	(0.4)	(0.5)	(-0.1)
Diff LEA/Nat	1.4	1.5	1.4	1.5	1.5

—■— LA

—▲— National

Notes:

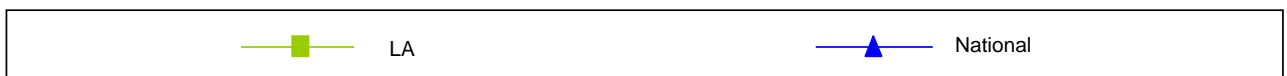
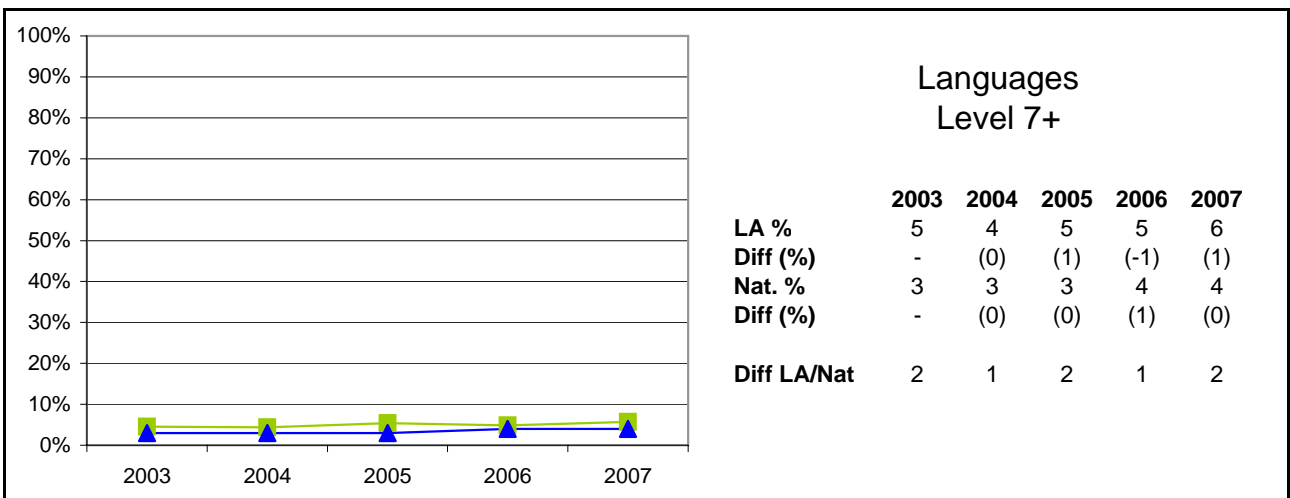
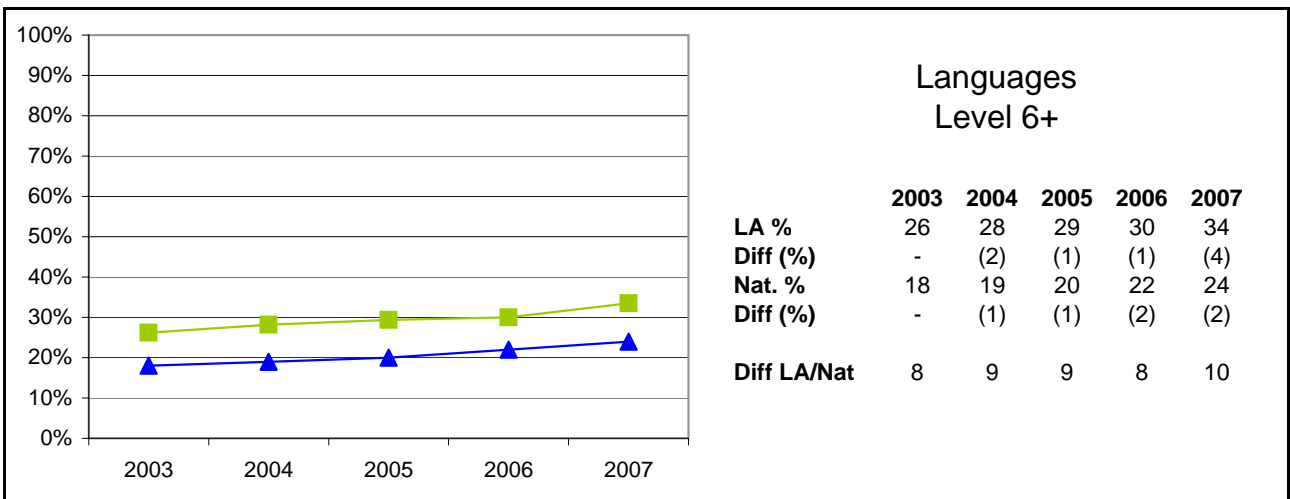
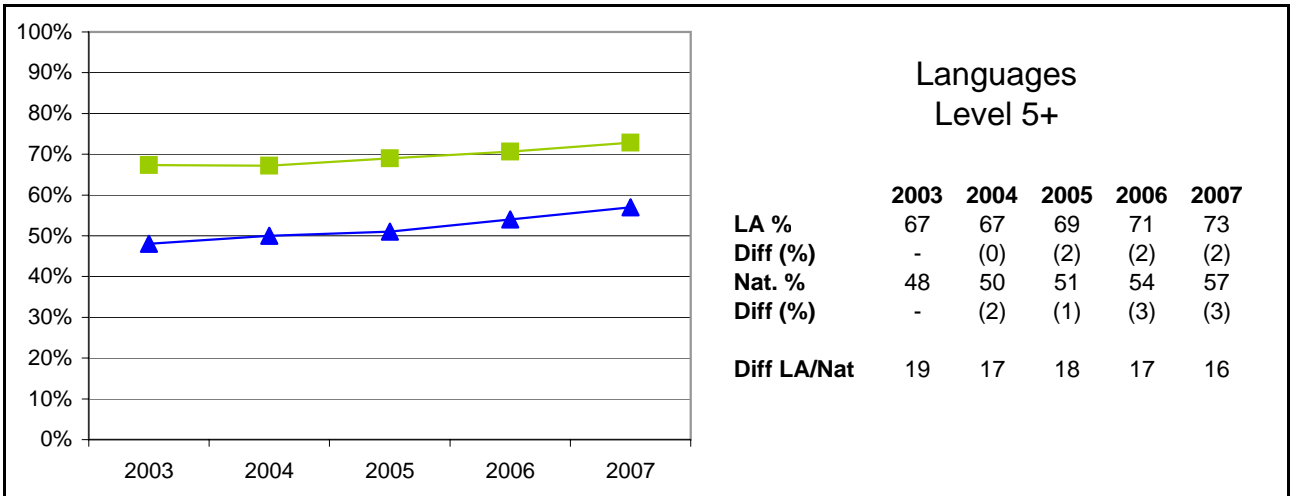
Figures derived from August 2007 DCSF information.

National figures obtained from DCSF information published within SFR 25/2007, National Curriculum Assessments at Key Stage 3 in England, 2007 (Provisional)

LA data for each year relates to all Schools (including Special Schools & the PRU). National data relates to all Schools (including Special Schools) but not PRUs

Key Stage Three Foundation Subjects 2003 - 2007

855 Leicestershire



Notes:

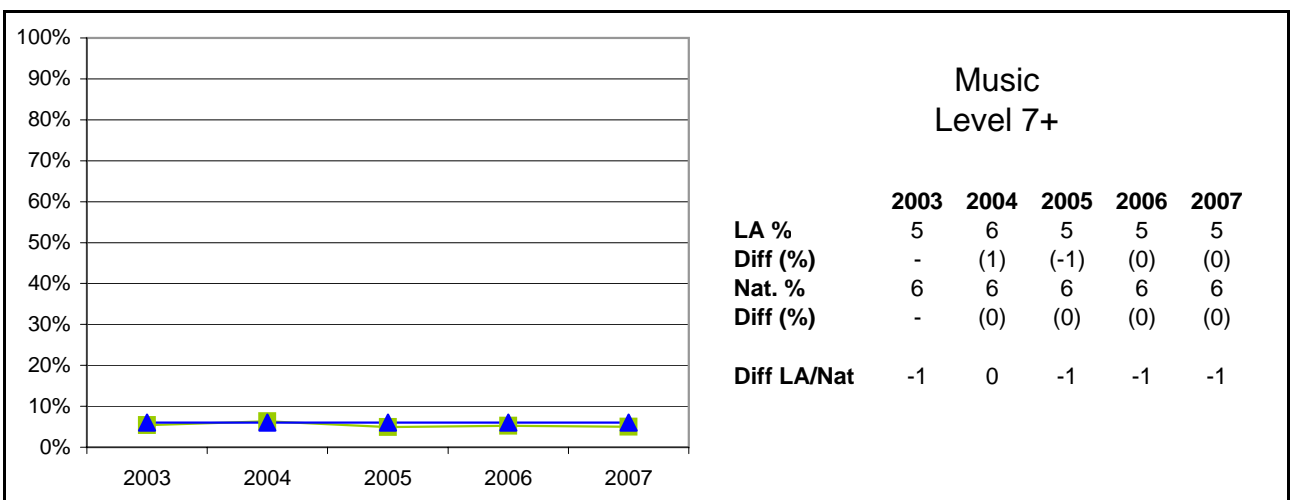
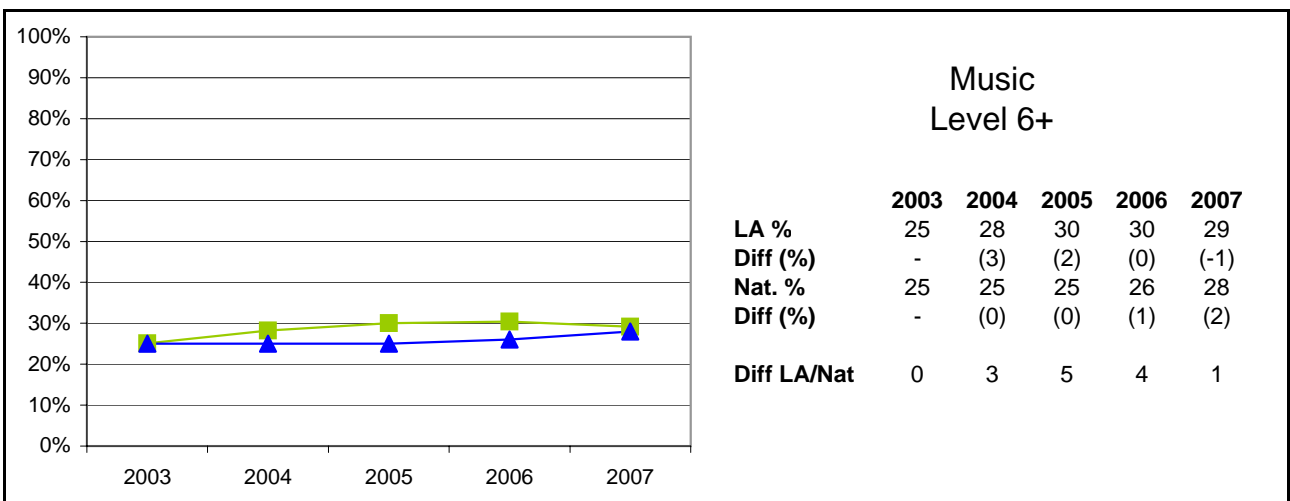
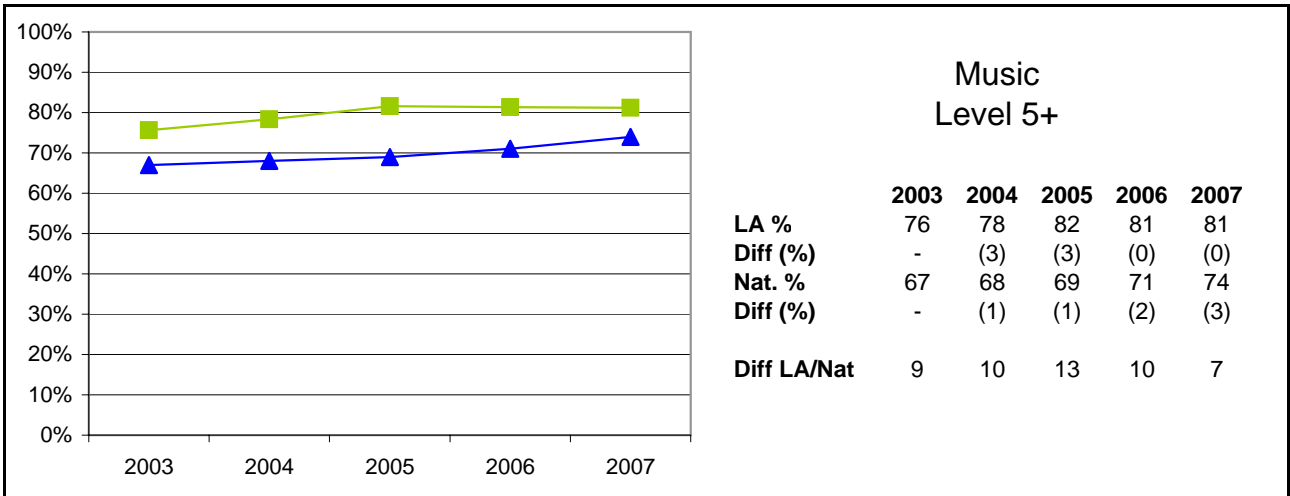
Figures derived from August 2007 DCSF information.

National figures obtained from DCSF information published within SFR 25/2007, National Curriculum Assessments at Key Stage 3 in England, 2007 (Provisional)

LA data for each year relates to all Schools (including Special Schools & the PRU). National data relates to all Schools (including Special Schools) but not PRUs

Key Stage Three Foundation Subjects 2003 - 2007

855 Leicestershire



Notes:

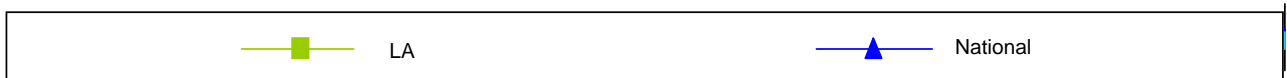
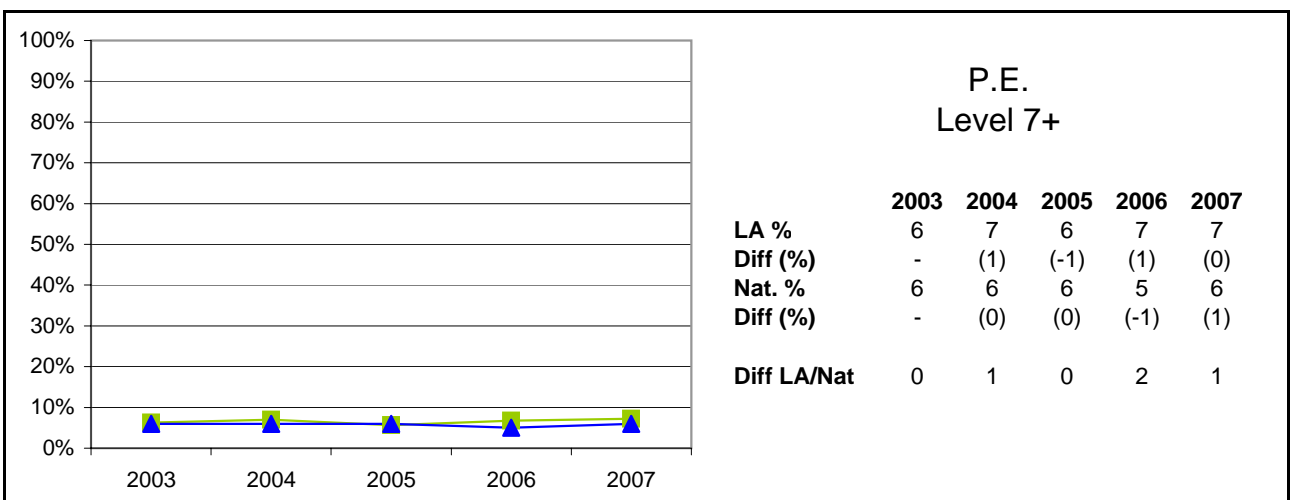
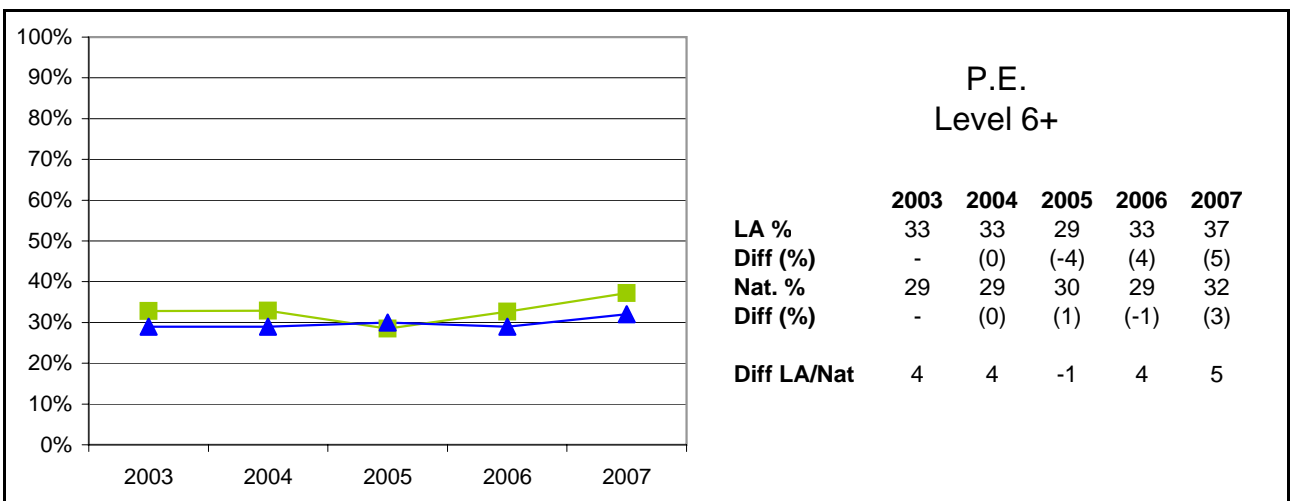
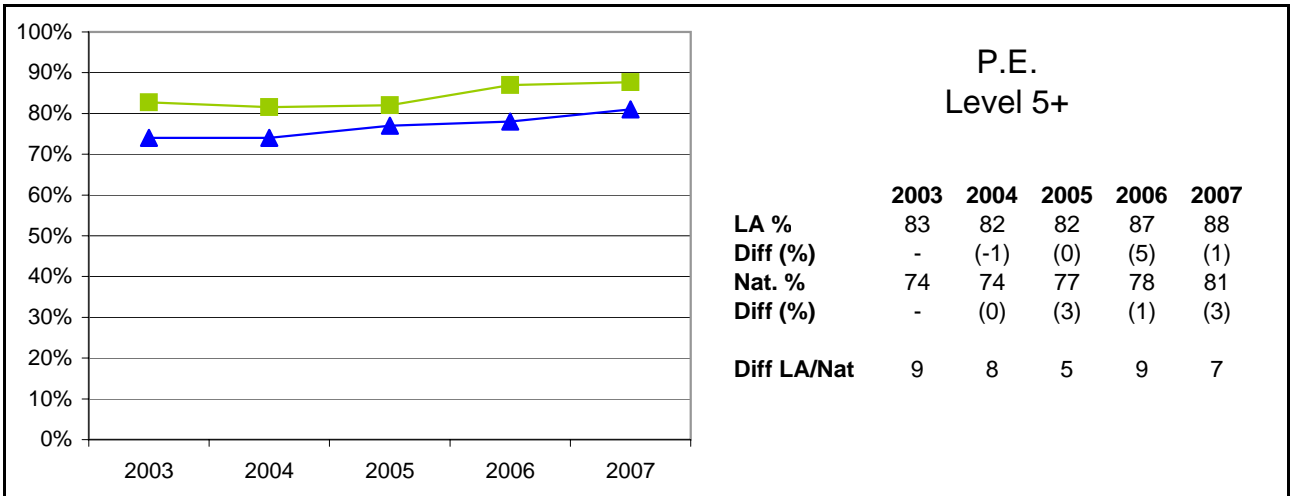
Figures derived from August 2007 DCSF information.

National figures obtained from DCSF information published within SFR 25/2007, National Curriculum Assessments at Key Stage 3 in England, 2007 (Provisional)

LA data for each year relates to all Schools (including Special Schools & the PRU). National data relates to all Schools (including Special Schools) but not PRUs

Key Stage Three Foundation Subjects 2003 - 2007

855 Leicestershire



Notes:

Figures derived from August 2007 DCSF information.

National figures obtained from DCSF information published within SFR 25/2007, National Curriculum Assessments at Key Stage 3 in England, 2007 (Provisional)

LA data for each year relates to all Schools (including Special Schools & the PRU). National data relates to all Schools (including Special Schools) but not PRUs

Key Stage Three Results 2003 - 2007: Pupil Numbers (Gender & Ethnicity)

855 Leicestershire

Gender	LA				
	2003	2004	2005	2006	2007
Boys	3901	4021	4021	4009	3793
Girls	3637	3869	3946	3706	3635
All	7538	7890	7967	7715	7428

Ethnicity	LA				
	2003	2004	2005	2006	2007
White British	6434	6933	6857	6828	6431
Irish	17	7	15	19	12
Any other White background	104	111	153	118	106
Total White	6555	7051	7027	6965	6549
White and Black Caribbean	47	46	52	41	62
White and Black African	13	4	7	11	14
White and Asian	44	35	47	38	61
Any other Mixed background	40	35	51	38	46
Total Mixed	145	120	157	128	183
Indian	343	348	385	392	379
Pakistani	20	14	25	13	27
Bangladeshi	26	36	26	31	33
Any other Asian background	21	31	48	32	41
Total Asian	411	429	484	468	480
Black Caribbean	8	17	13	11	8
Black African	8	7	15	3	11
Any other Black background	3	8	1	5	4
Total Black	19	32	29	19	23
Chinese	10	18	20	20	25
Any other ethnic group	9	21	15	19	17
Unclassified	208	215	219	92	148
All pupils	7357	7886	7951	7711	7425

Notes:

Data relates to KS3 cohort only

Most figures derived from August 2007 DCSF information.

LA data for each year relates to all schools (including special schools and the PRU).

Key Stage Three Results 2003 - 2007 Gender Analysis: English & Mathematics

855 Leicestershire Average

English

Boys	LA					National				
	2003	2004	2005	2006	2007	2003	2004	2005	2006	2007
Level	2003	2004	2005	2006	2007	2003	2004	2005	2006	2007
5+	70%	74%	77%	76%	77%	61%	64%	67%	65%	67%
6+	28%	31%	36%	33%	32%	27%	27%	28%	27%	25%
7+	6%	6%	8%	8%	7%	7%	7%	7%	7%	5%
APS	32.8	33.3	33.9	33.7	33.6	32.4	32.3	32.7	32.4	32.3

Girls	LA					National				
	2003	2004	2005	2006	2007	2003	2004	2005	2006	2007
Level	2003	2004	2005	2006	2007	2003	2004	2005	2006	2007
5+	83%	86%	89%	89%	86%	74%	78%	81%	80%	80%
6+	44%	47%	52%	50%	45%	40%	41%	42%	42%	39%
7+	11%	13%	14%	14%	13%	12%	13%	12%	13%	10%
APS	35.2	35.7	36.2	36.1	35.6	34.9	34.8	35.0	35.1	34.7


Gender Gap	LA					National				
	2003	2004	2005	2006	2007	2003	2004	2005	2006	2007
Level	2003	2004	2005	2006	2007	2003	2004	2005	2006	2007
5+	-12%	-12%	-12%	-13%	-9%	-13%	-14%	-14%	-15%	-13%
6+	-16%	-17%	-16%	-17%	-13%	-13%	-14%	-14%	-15%	-14%
7+	-5%	-6%	-6%	-6%	-6%	-5%	-6%	-5%	-6%	-5%
APS	-2.4	-2.4	-2.3	-2.5	-2.0	-2.5	-2.5	-2.3	-2.7	-2.4


Mathematics

Boys	LA					National				
	2003	2004	2005	2006	2007	2003	2004	2005	2006	2007
Level	2003	2004	2005	2006	2007	2003	2004	2005	2006	2007
5+	80%	80%	82%	84%	84%	70%	72%	73%	76%	75%
6+	59%	61%	62%	68%	67%	49%	52%	53%	57%	57%
7+	29%	28%	32%	38%	37%	24%	24%	26%	31%	30%
APS	37.2	37.0	37.7	38.9	38.7	35.5	35.6	36.1	37.1	36.9

Girls	LA					National				
	2003	2004	2005	2006	2007	2003	2004	2005	2006	2007
Level	2003	2004	2005	2006	2007	2003	2004	2005	2006	2007
5+	81%	82%	82%	85%	83%	72%	74%	74%	77%	76%
6+	58%	62%	61%	66%	64%	50%	52%	53%	57%	55%
7+	28%	28%	29%	34%	32%	23%	22%	25%	29%	28%
APS	37.2	37.3	37.3	38.5	38.0	35.6	35.7	36.0	37.0	36.7

Gender Gap	LA					National				
	2003	2004	2005	2006	2007	2003	2004	2005	2006	2007
Level	2003	2004	2005	2006	2007	2003	2004	2005	2006	2007
5+	0%	-2%	1%	-1%	1%	-2%	-2%	-1%	-1%	-1%
6+	0%	-1%	1%	1%	3%	-1%	0%	0%	0%	2%
7+	0%	0%	3%	4%	5%	1%	2%	1%	2%	2%
APS	-0.1	-0.2	0.5	0.4	0.7	-0.1	-0.1	0.1	0.1	0.2

 Gender gap less than national gender gap

 Gender gap greater than national gender gap

Notes:

Figures derived from August 2007 DCSF information.

National figures obtained from DCSF information published within SFR 25/2007, National Curriculum Assessments at Key Stage 3 in England, 2007 (Provisional)

LA data for each year relates to all Schools (including Special Schools & the PRU). National data relates to all Schools (including Special Schools) but not PRUs

Gender gap is the difference between boys' attainment compared to girls' attainment

Key Stage Three Results 2003 - 2007 Gender Analysis: Science & ICT

855 Leicestershire Average

Science

Boys	LA					National				
	2003	2004	2005	2006	2007	2003	2004	2005	2006	2007
Level	2003	2004	2005	2006	2007	2003	2004	2005	2006	2007
5+	81%	77%	80%	82%	84%	68%	65%	69%	71%	72%
6+	53%	44%	49%	51%	53%	40%	34%	38%	41%	40%
7+	15%	14%	17%	20%	21%	11%	11%	12%	15%	15%
APS	35.8	34.9	35.5	36.0	36.3	33.7	33.0	33.7	34.2	34.2

Girls	LA					National				
	2003	2004	2005	2006	2007	2003	2004	2005	2006	2007
Level	2003	2004	2005	2006	2007	2003	2004	2005	2006	2007
5+	80%	79%	80%	84%	83%	69%	67%	70%	73%	73%
6+	53%	47%	45%	50%	50%	40%	35%	36%	41%	41%
7+	16%	15%	13%	18%	20%	11%	11%	11%	14%	15%
APS	35.7	35.3	35.1	36.0	36.0	33.7	33.3	33.6	34.3	34.4


Gender Gap	LA					National				
	2003	2004	2005	2006	2007	2003	2004	2005	2006	2007
Level	2003	2004	2005	2006	2007	2003	2004	2005	2006	2007
5+	1%	-2%	0%	-2%	1%	-1%	-2%	-1%	-2%	-1%
6+	0%	-2%	3%	1%	3%	0%	-1%	2%	0%	-1%
7+	0%	-1%	3%	3%	2%	0%	0%	1%	1%	0%
APS	0.1	-0.4	0.5	0.1	0.3	0.0	-0.3	0.1	-0.1	-0.2


ICT

Boys	LA					National				
	2003	2004	2005	2006	2007	2003	2004	2005	2006	2007
Level	2003	2004	2005	2006	2007	2003	2004	2005	2006	2007
5+	73%	64%	69%	75%	79%	-	-	-	-	-
6+	21%	15%	16%	18%	22%	-	-	-	-	-
7+	2%	1%	1%	1%	2%	-	-	-	-	-
APS	-	-	-	-	-	-	-	-	-	-

Girls	LA					National				
	2003	2004	2005	2006	2007	2003	2004	2005	2006	2007
Level	2003	2004	2005	2006	2007	2003	2004	2005	2006	2007
5+	77%	76%	77%	84%	86%	-	-	-	-	-
6+	24%	18%	18%	24%	29%	-	-	-	-	-
7+	2%	1%	1%	1%	2%	-	-	-	-	-
APS	-	-	-	-	-	-	-	-	-	-

Gender Gap	LA					National				
	2003	2004	2005	2006	2007	2003	2004	2005	2006	2007
Level	2003	2004	2005	2006	2007	2003	2004	2005	2006	2007
5+	-4%	-12%	-8%	-9%	-7%	-	-	-	-	-
6+	-3%	-3%	-2%	-6%	-7%	-	-	-	-	-
7+	0%	0%	1%	0%	0%	-	-	-	-	-
APS	-	-	-	-	-	-	-	-	-	-

 Gender gap less than national gender gap

 Gender gap greater than national gender gap

Notes:

Figures derived from August 2007 DCSF information.

National figures obtained from DCSF information published within SFR 25/2007, National Curriculum Assessments at Key Stage 3 in England, 2007 (Provisional)

LA data for each year relates to all Schools (including Special Schools & the PRU). National data relates to all Schools (including Special Schools) but not PRUs

Gender gap is the difference between boys' attainment compared to girls' attainment

Key Stage Three Results 2003 - 2007 Gender Analysis: Reading & Writing

855 Leicestershire Average

Reading

Boys	LA					National				
	2003	2004	2005	2006	2007	2003	2004	2005	2006	2007
Level	2003	2004	2005	2006	2007	2003	2004	2005	2006	2007
5+	71%	69%	71%	70%	75%	61%	60%	61%	59%	65%
6+	30%	28%	32%	30%	33%	-	26%	25%	25%	25%
7+	9%	6%	8%	7%	9%	-	7%	6%	7%	6%
APS	-	-	-	-	-	-	-	-	-	-

Girls	LA					National				
	2003	2004	2005	2006	2007	2003	2004	2005	2006	2007
Level	2003	2004	2005	2006	2007	2003	2004	2005	2006	2007
5+	83%	80%	84%	85%	86%	74%	71%	76%	74%	78%
6+	46%	42%	50%	48%	46%	-	38%	40%	40%	39%
7+	17%	13%	16%	15%	15%	-	14%	12%	14%	12%
APS	-	-	-	-	-	-	-	-	-	-


Gender Gap	LA					National				
	2003	2004	2005	2006	2007	2003	2004	2005	2006	2007
Level	2003	2004	2005	2006	2007	2003	2004	2005	2006	2007
5+	-11%	-11%	-13%	-14%	-10%	-13%	-11%	-15%	-15%	-13%
6+	-16%	-13%	-17%	-17%	-13%	-	-12%	-15%	-15%	-14%
7+	-8%	-7%	-8%	-8%	-6%	-	-7%	-6%	-7%	-6%
APS	-	-	-	-	-	-	-	-	-	-


Writing

Boys	LA					National				
	2003	2004	2005	2006	2007	2003	2004	2005	2006	2007
Level	2003	2004	2005	2006	2007	2003	2004	2005	2006	2007
5+	64%	74%	78%	78%	75%	59%	65%	71%	69%	67%
6+	29%	35%	37%	35%	32%	-	29%	32%	30%	27%
7+	6%	9%	12%	11%	9%	-	9%	10%	9%	7%
APS	-	-	-	-	-	-	-	-	-	-

Girls	LA					National				
	2003	2004	2005	2006	2007	2003	2004	2005	2006	2007
Level	2003	2004	2005	2006	2007	2003	2004	2005	2006	2007
5+	77%	87%	90%	89%	85%	72%	80%	82%	83%	80%
6+	42%	50%	51%	50%	45%	-	43%	43%	44%	39%
7+	10%	16%	16%	16%	14%	-	14%	14%	14%	11%
APS	-	-	-	-	-	-	-	-	-	-

Gender Gap	LA					National				
	2003	2004	2005	2006	2007	2003	2004	2005	2006	2007
Level	2003	2004	2005	2006	2007	2003	2004	2005	2006	2007
5+	-13%	-13%	-12%	-12%	-9%	-13%	-15%	-11%	-14%	-13%
6+	-13%	-15%	-14%	-15%	-12%	-	-14%	-11%	-14%	-12%
7+	-4%	-7%	-5%	-5%	-5%	-	-5%	-4%	-5%	-4%
APS	-	-	-	-	-	-	-	-	-	-

 Gender gap less than national gender gap

 Gender gap greater than national gender gap

Notes:

Figures derived from August 2007 DCSF information.

National figures obtained from DCSF information published within SFR 25/2007, National Curriculum Assessments at Key Stage 3 in England, 2007 (Provisional)

LA data for each year relates to all Schools (including Special Schools & the PRU). National data relates to all Schools (including Special Schools) but not PRUs

Gender gap is the difference between boys' attainment compared to girls' attainment

Key Stage Three Results 2003 - 2007 Ethnicity Analysis: English


855 Leicestershire


Percentage achieving Level 5+


Ethnicity	LA					National				
	2003	2004	2005	2006	2007	2003	2004	2005	2006	2007
White British	76%	80%	83%	82%	81%	70%	72%	75%	73%	-
Irish	82%	100%	80%	100%	83%	75%	76%	77%	79%	-
Any other White background	68%	77%	81%	82%	73%	66%	69%	70%	70%	-
Total White	76%	80%	83%	82%	81%	70%	72%	74%	73%	-
White and Black Caribbean	70%	78%	75%	73%	85%	70%	77%	68%	69%	-
White and Black African	54%	100%	71%	100%	71%	62%	75%	73%	72%	-
White and Asian	84%	83%	87%	89%	82%	78%	84%	81%	80%	-
Any other Mixed background	78%	86%	78%	89%	83%	71%	80%	77%	75%	-
Total Mixed	75%	83%	80%	85%	83%	69%	72%	74%	73%	-
Indian	87%	89%	88%	89%	89%	77%	80%	83%	82%	-
Pakistani	85%	86%	76%	77%	89%	57%	58%	64%	62%	-
Bangladeshi	73%	72%	69%	71%	88%	58%	62%	67%	66%	-
Any other Asian background	90%	81%	85%	88%	93%	71%	70%	72%	71%	-
Total Asian	87%	87%	86%	87%	90%	66%	68%	72%	71%	-
Black Caribbean	50%	76%	92%	73%	88%	56%	61%	67%	67%	-
Black African	63%	86%	93%	100%	91%	58%	63%	65%	66%	-
Any other Black background	67%	50%	100%	100%	50%	59%	62%	67%	66%	-
Total Black	58%	72%	93%	84%	83%	57%	62%	66%	66%	-
Chinese	70%	89%	80%	85%	96%	80%	80%	81%	80%	-
Any other ethnic group	89%	57%	73%	79%	82%	60%	62%	63%	63%	-
Unclassified	64%	72%	74%	70%	87%	63%	65%	67%	66%	-
All pupils	76%	80%	83%	82%	82%	69%	71%	74%	73%	-


Differences

Ethnicity	LA vs. National				
	2003	2004	2005	2006	2007
White British	6%	8%	8%	9%	-
Irish	7%	24%	3%	21%	-
Any other White background	2%	8%	11%	12%	-
Total White	6%	8%	9%	9%	-
White and Black Caribbean	0%	1%	7%	4%	-
White and Black African	-8%	25%	-2%	28%	-
White and Asian	6%	-1%	6%	9%	-
Any other Mixed background	7%	6%	1%	14%	-
Total Mixed	6%	11%	6%	12%	-
Indian	10%	9%	5%	7%	-
Pakistani	28%	28%	12%	15%	-
Bangladeshi	15%	10%	2%	5%	-
Any other Asian background	19%	11%	13%	17%	-
Total Asian	21%	19%	14%	16%	-
Black Caribbean	-6%	15%	25%	6%	-
Black African	5%	23%	28%	34%	-
Any other Black background	8%	-12%	33%	34%	-
Total Black	1%	10%	27%	18%	-
Chinese	-10%	9%	-1%	5%	-
Any other ethnic group	29%	-5%	10%	16%	-
Unclassified	1%	7%	7%	4%	-
All pupils	7%	9%	9%	9%	-

 Performance greater than the national average for the ethnic group

 Performance less than the national average for the ethnic group

 Attainment greater than the comparator figure

 Attainment less than the comparator figure

Notes:

Figures derived from the most recent DCSF data sources in all cases.

LA data for each year relates to all Schools (including Special Schools & the PRU). National data relates to all Schools (including Special Schools) but not PRUs

Key Stage Three Results 2003 - 2007 Ethnicity Analysis: Mathematics


855 Leicestershire


Percentage achieving Level 5+


Ethnicity	LA					National				
	2003	2004	2005	2006	2007	2003	2004	2005	2006	2007
White British	81%	81%	82%	84%	83%	72%	74%	74%	78%	-
Irish	94%	100%	73%	100%	75%	75%	76%	74%	81%	-
Any other White background	76%	80%	79%	85%	75%	69%	71%	71%	76%	-
Total White	81%	81%	82%	85%	83%	72%	74%	74%	78%	-
White and Black Caribbean	70%	83%	73%	80%	82%	69%	71%	65%	70%	-
White and Black African	54%	100%	86%	100%	71%	62%	65%	70%	73%	-
White and Asian	89%	86%	85%	87%	82%	78%	81%	80%	82%	-
Any other Mixed background	80%	77%	80%	89%	87%	71%	73%	74%	77%	-
Total Mixed	77%	83%	80%	87%	83%	69%	71%	71%	75%	-
Indian	87%	89%	89%	89%	90%	79%	81%	82%	85%	-
Pakistani	80%	86%	84%	77%	93%	55%	59%	61%	66%	-
Bangladeshi	81%	81%	65%	87%	88%	57%	62%	64%	69%	-
Any other Asian background	86%	84%	94%	88%	90%	76%	77%	75%	78%	-
Total Asian	87%	88%	88%	88%	90%	66%	69%	70%	74%	-
Black Caribbean	88%	82%	92%	82%	75%	53%	57%	60%	64%	-
Black African	50%	86%	73%	100%	90%	56%	60%	61%	66%	-
Any other Black background	67%	75%	0%	80%	50%	55%	61%	62%	67%	-
Total Black	68%	81%	79%	84%	77%	55%	59%	61%	65%	-
Chinese	90%	94%	100%	90%	100%	90%	90%	92%	92%	-
Any other ethnic group	89%	71%	80%	79%	88%	65%	68%	67%	71%	-
Unclassified	69%	76%	79%	75%	89%	67%	68%	67%	70%	-
All pupils	80%	81%	82%	85%	84%	71%	73%	73%	77%	-


Differences

Ethnicity	LA vs. National				
	2003	2004	2005	2006	2007
White British	9%	7%	8%	6%	-
Irish	19%	24%	-1%	19%	-
Any other White background	7%	9%	8%	9%	-
Total White	9%	7%	8%	7%	-
White and Black Caribbean	1%	12%	8%	10%	-
White and Black African	-8%	35%	16%	27%	-
White and Asian	11%	5%	5%	5%	-
Any other Mixed background	9%	4%	6%	12%	-
Total Mixed	8%	12%	9%	12%	-
Indian	8%	8%	7%	4%	-
Pakistani	25%	27%	23%	11%	-
Bangladeshi	24%	19%	1%	18%	-
Any other Asian background	10%	7%	19%	10%	-
Total Asian	21%	19%	18%	14%	-
Black Caribbean	35%	25%	32%	18%	-
Black African	-6%	26%	12%	34%	-
Any other Black background	12%	14%	-62%	13%	-
Total Black	13%	22%	18%	19%	-
Chinese	0%	4%	8%	-2%	-
Any other ethnic group	24%	3%	13%	8%	-
Unclassified	2%	8%	12%	5%	-
All pupils	9%	8%	9%	8%	-

 Performance greater than the national average for the ethnic group

 Performance less than the national average for the ethnic group

 Attainment greater than the comparator figure

 Attainment less than the comparator figure

Notes:

Figures derived from the most recent DCSF data sources in all cases.

LA data for each year relates to all Schools (including Special Schools & the PRU). National data relates to all Schools (including Special Schools) but not PRUs

Key Stage Three Results 2003 - 2007 Ethnicity Analysis: Science


855 Leicestershire


Percentage achieving Level 5+


Ethnicity	LA					National				
	2003	2004	2005	2006	2007	2003	2004	2005	2006	2007
White British	81%	78%	80%	83%	83%	70%	68%	71%	74%	-
Irish	100%	100%	73%	95%	67%	73%	70%	71%	78%	-
Any other White background	78%	78%	77%	85%	72%	65%	63%	64%	67%	-
Total White	81%	78%	80%	83%	83%	70%	68%	71%	74%	-
White and Black Caribbean	66%	74%	69%	76%	85%	68%	64%	61%	66%	-
White and Black African	46%	100%	71%	100%	64%	60%	58%	64%	69%	-
White and Asian	84%	86%	83%	84%	85%	76%	75%	76%	77%	-
Any other Mixed background	83%	77%	75%	89%	80%	68%	66%	70%	73%	-
Total Mixed	74%	79%	75%	84%	83%	67%	65%	67%	71%	-
Indian	83%	83%	82%	86%	86%	73%	71%	74%	78%	-
Pakistani	85%	71%	68%	62%	93%	47%	46%	50%	54%	-
Bangladeshi	54%	58%	58%	58%	73%	49%	50%	53%	57%	-
Any other Asian background	95%	81%	94%	88%	85%	70%	65%	65%	67%	-
Total Asian	82%	80%	81%	83%	86%	59%	58%	61%	64%	-
Black Caribbean	88%	59%	85%	73%	88%	51%	48%	54%	58%	-
Black African	50%	71%	67%	100%	82%	51%	49%	52%	56%	-
Any other Black background	67%	63%	100%	100%	50%	54%	51%	55%	60%	-
Total Black	68%	63%	76%	84%	78%	51%	49%	53%	58%	-
Chinese	90%	94%	90%	85%	92%	82%	78%	80%	81%	-
Any other ethnic group	78%	62%	80%	74%	76%	59%	56%	56%	60%	-
Unclassified	71%	67%	75%	76%	88%	65%	60%	63%	65%	-
All pupils	80%	78%	80%	83%	83%	68%	66%	69%	72%	-


Differences

Ethnicity	LA vs. National				
	2003	2004	2005	2006	2007
White British	11%	10%	9%	9%	-
Irish	27%	30%	2%	17%	-
Any other White background	13%	15%	13%	18%	-
Total White	11%	10%	9%	9%	-
White and Black Caribbean	-2%	10%	8%	10%	-
White and Black African	-14%	42%	7%	31%	-
White and Asian	8%	11%	7%	7%	-
Any other Mixed background	15%	11%	5%	16%	-
Total Mixed	7%	14%	8%	13%	-
Indian	10%	12%	8%	8%	-
Pakistani	38%	25%	18%	8%	-
Bangladeshi	5%	8%	5%	1%	-
Any other Asian background	25%	16%	29%	21%	-
Total Asian	23%	22%	20%	19%	-
Black Caribbean	37%	11%	31%	15%	-
Black African	-1%	22%	15%	44%	-
Any other Black background	13%	12%	45%	40%	-
Total Black	17%	14%	23%	26%	-
Chinese	8%	16%	10%	4%	-
Any other ethnic group	19%	6%	24%	14%	-
Unclassified	6%	7%	12%	11%	-
All pupils	12%	12%	11%	11%	-

 Performance greater than the national average for the ethnic group

 Performance less than the national average for the ethnic group

 Attainment greater than the comparator figure

 Attainment less than the comparator figure

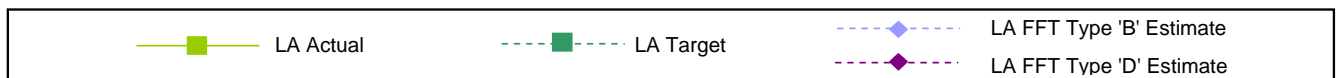
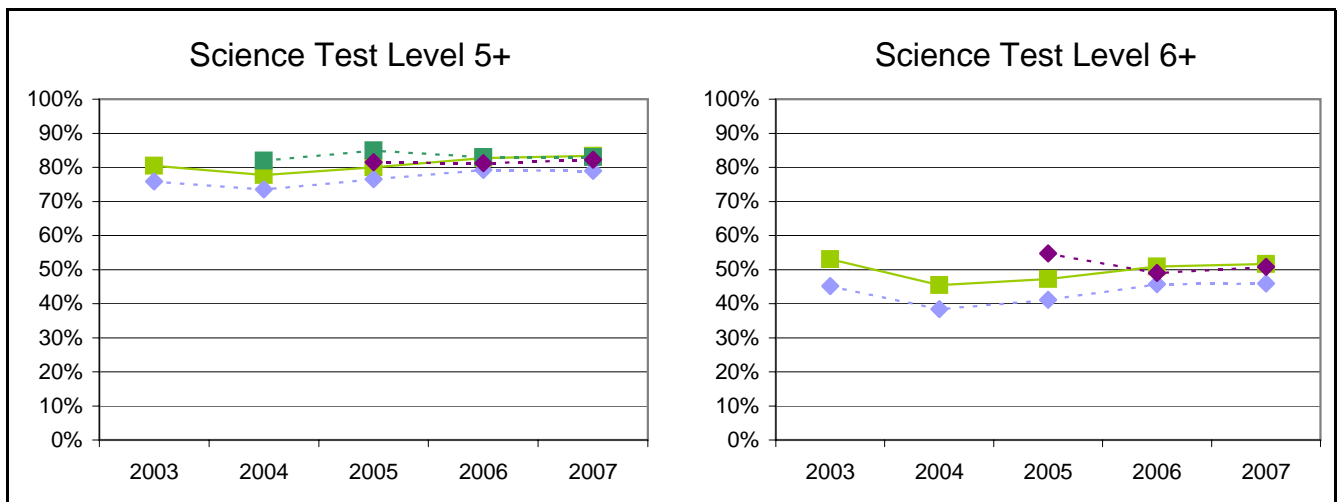
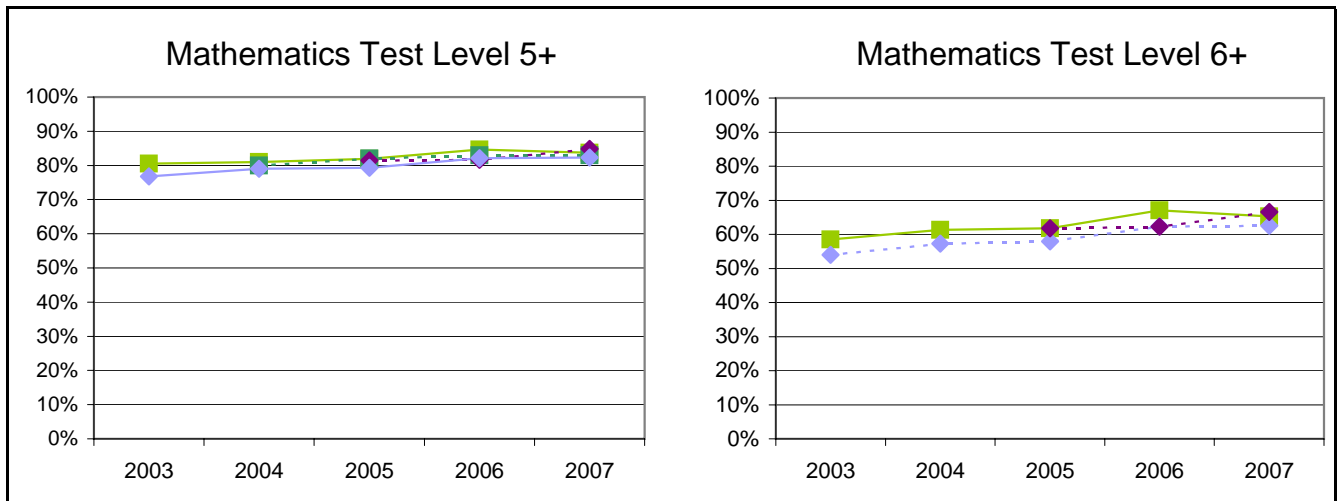
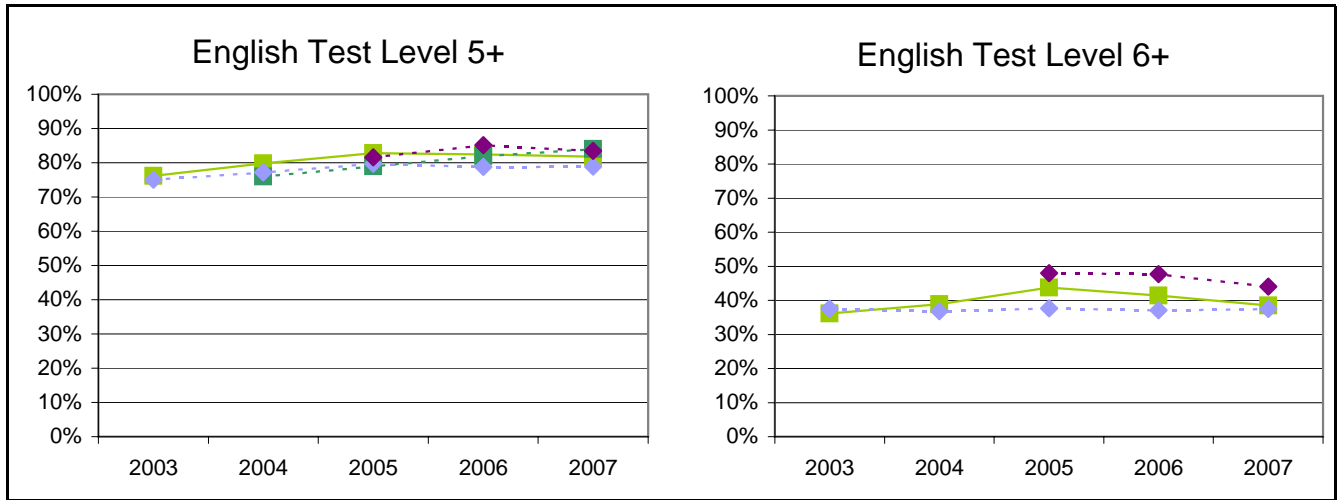
Notes:

Figures derived from the most recent DCSF data sources in all cases.

LA data for each year relates to all Schools (including Special Schools & the PRU). National data relates to all Schools (including Special Schools) but not PRUs

Key Stage 3 Results, Targets and FFT Estimates 2003 - 2007 Levels 5+ and 6+ 855 Leicestershire

Graphs display a historical comparison of LA attainment against LA Targets (5+) and FFT Type 'B' & 'D' estimates



Notes:
 LA Targets based on EDP (2001 to 2004) and SaLTS (2005 onwards) submissions.
 FFT Type 'B' & 'D' data based on estimates as at September 2007.