

**Key Stage  
Three  
Officer Pack  
2008**

Performance Team, Knowledge  
Management, CYPS  
Jason Howson: 0116 305 6353  
Richard Gretton: 0116 305 6638

# **KEY STAGE THREE GRAPH PACK**

## **Background**

This report provides an overview of School level, Local Authority and National Key Stage Three attainment data. The purpose of the report is to provide basic attainment comparisons between the Local and National situation and to include further analysis of attainment by gender and ethnicity.

The Key Stage Three Graph Pack includes the following contents:

- Breakdown of 2008 Key Stage Three attainment
- Headline contextual data for the 2008 cohort
- English Test Attainment and Teacher Assessment 5+, 6+ and 7+ 2004 to 2008
- Mathematics Test Attainment and Teacher Assessment 5+, 6+ and 7+ 2004 to 2008
- Science Test Attainment and Teacher Assessment 5+, 6+ and 7+ 2004 to 2008
- ICT Teacher Assessment 5+, 6+ and 7+ 2004 to 2008
- Reading and Writing Test Attainment 5+, 6+ and 7+ 2004 to 2008
- Average Point Scores (APS) for boys, girls and all pupils 2004 to 2008
- Teacher Assessments for all foundation subjects 5+, 6+ and 7+ 2004 to 2008
- Key Stage Three pupil number counts by Ethnicity and Gender between 2004 and 2008
- Gender Analysis 5+, 6+ and 7+ with APS 2004 to 2008 for English, Maths, Science, ICT, Reading and Writing
- Ethnicity Analysis 5+ 2004 to 2008 for English, Maths and Science
- FFT Type 'B'/'D' Estimates, Statutory Targets and Actual Attainment comparisons for English, Maths and Science for 5+ and 6+

## **Technical details**

1. Key Stage Three attainment data is supplied to the LA by the DCSF, the latest data being made available on 9 September 2008. All the School level and Local Authority data are derived from this data set. As of this date, the overall completion rate for Leicestershire was 98.9% with English at 90%, Maths at 99% and Science at 99.6%. *Appendix A* shows the completion rate by subject for individual schools. To allow analysis based on ethnicity, the most recently available Spring School Census data has been matched into the data set. The data for 2008 at this stage of the academic year is classified as provisional.
2. The source of the National data for 2008 is the DCSF Statistical First Release SFR20/2008 National Curriculum Assessments at Key Stage 3 in England, 2008 (Provisional). This data is based on the early release of 25 July 2008 and as such does not bear direct comparison to the school level data issued later that forms the basis of the LA aggregated figures. As of 25 July national completion rates were English 84% and 94% for Maths and Science. Nationally, there is currently no foundation subject teacher assessment data available for 2008.

All historic National data has been obtained from a variety of DCSF attainment sources.

3. Included in the Graph Pack are sections on gender and ethnicity analysis. For gender analysis purposes we have highlighted where the gender gap is larger than the national average and for ethnicity analysis purposes we have highlighted where headline performance is greater than or less than average national or local performance. No degree of significance is placed on the differences highlighted.
4. Also included in the analysis are FFT (Fischer Family Trust) Key Stage Three Type 'B' and 'D' Estimates for 2004 to 2008 based on Key Stage Two prior attainment (both Test and Teacher Assessment data). FFT Type 'B' estimates are based upon individual pupils' attainment by gender between Key Stage Two and Key Stage Three adjusted to allow for the performance of 'similar' schools. Type 'D' estimates provide an indication of achievement that would be consistent with the progress made by students in schools with the highest value-added (at the top 25% of schools nationally) between Key Stage Two and Key Stage Three.

5. Historic Teacher Assessment (TA) data for Schools, the Local Authority and Nationally may be partial for a given year because some schools did not submit valid Teacher Assessment data to the NAA (National Assessment Agency), 2006 is an example of this. This will have impact on the Local Authority and National data to some degree, and the schools concerned will have no TA data reported in this pack for those years Nationally for 2007 the Teacher Assessment data is approximately 70% complete, in 2006 it was 75% complete. For Leicestershire 2006 was 88% complete while 2007 and 2008 were 100% complete as the Local Authority Performance Team collected the data directly from schools and transferred it to the NAA.
6. Comparisons with 2007 are affected by an administrative change to the 2008 tests that include the removal of borderlining i.e. the process of checking test scripts that fall just below level thresholds. *This change has been estimated to reduce the percentage achieving the expected level 5 and above by up to 0.9% in English, 0.2% in Maths and 0.6% in Science. Estimates of reductions at level 6 and above are 1.6% for English, 0.3% for Maths and 0.9% for Science.*

The table below shows the estimated impact of borderlining on test result gains over the previous four years.

		<b>2004</b>	<b>2005</b>	<b>2006</b>	<b>2007</b>
Level 5+	English	1.2%	1.3%	1.2%	0.9%
	Maths	0.2%	0.2%	0.2%	0.2%
	Science	0.5%	0.9%	0.8%	0.6%
Level 6+	English	1.2%	1.8%	2.0%	1.6%
	Maths	0.2%	0.4%	0.3%	0.3%
	Science	0.5%	1.0%	1.2%	0.9%

## **Enquiries**

Please contact the following people listed below if you wish to make any comments regarding this report or if you have any queries regarding the analysis.

As this analysis is very much developmental we would welcome any comments so that the product can improve and evolve.

### **Report contacts:**

<p><b>Jason Howson</b> Analyst Performance Team, Knowledge Management Children &amp; Young People's Service Leicestershire County Council</p> <p>Tel No: 0116 305 6353 E-Mail: <a href="mailto:jhowson@leics.gov.uk">jhowson@leics.gov.uk</a></p>	<p><b>Richard Gretton</b> Statistics Manager Performance Team, Knowledge Management Children &amp; Young People's Service Leicestershire County Council</p> <p>Tel No: 0116 305 6638 E-Mail: <a href="mailto:rgretton@leics.gov.uk">rgretton@leics.gov.uk</a></p>
<p><b>Lynda Smith</b> School Development Adviser – Performance Data School Improvement &amp; Performance Service Children &amp; Young People's Service Leicestershire County Council</p> <p>Tel No: 0116 305 7412 E-Mail: <a href="mailto:lysmith@leics.gov.uk">lysmith@leics.gov.uk</a></p>	

## Headline commentary:

Leicestershire continues to perform significantly better than the National average across 5+, 6+ and 7+ attainment measures. The increases and decreases in Leicestershire's performance across each of the attainment measures for 2008 in English, Maths and Science largely reflect the national trends. English and Maths at 5+ have remained relatively stable over the last 3 years, currently standing at 81% for English and 84% for Maths. Science at 5+ has showed a steady rate of increase from 2004 to 2007 with the current level of 81% showing a slight decline from the previous year. As for 2007, Leicestershire once again achieved its 5+ Key Stage Three statutory target for Maths although Science was 3% and English 5% below their respective targets.

Leicestershire's excellent performance at Key Stage Three lessens slightly for higher attainment levels as reflected in comparisons against Fischer Family Trust (FFT) estimates. At 5+ Leicestershire is relatively in line with FFT Type D estimates (pupil performance consistent with schools at the top 25% of overall value added), while at 6+, comparisons are weaker for English and Maths.

### Leicestershire and National Key Stage Three Performance (2001 to 2008)

	Year	5+			6+			7+			APS	VA	CVA	
		English	Maths	Science	English	Maths	Science	English	Maths	Science				
Leicestershire	2008	81	84	81	40	65	51	9	36	19	36.2	-	-	Provisional
National	2008	73	77	71	33	57	41	8	31	14	34.8	-	-	Provisional
Leicestershire	2007	82	83	83	39	65	52	10	35	21	36.4	-	101.1	
National	2007	74	76	73	32	56	41	8	29	15	34.9	-	100.0	
Leicestershire	2006	83	85	83	42	67	51	11	36	19	36.5	100.9		
National	2006	73	77	72	35	57	41	10	30	15	35.0	99.8		
Leicestershire	2005	83	82	80	44	62	47	11	30	15	36.0	100.8		
National	2005	74	74	70	35	53	37	9	25	12	34.5	99.7		
Leicestershire	2004	80	81	78	39	61	46	9	28	15	35.6	100.9		
National	2004	71	73	66	34	52	34	10	23	11	34.1	99.8		
Leicestershire	2003	76	80	80	37	58	53	8	28	16	35.7	101.0		
National	2003	69	71	68	35	49	40	10	24	11	34.3	99.9		
Leicestershire	2002	75	76	79	37	54	44	11	24	14	35.2	101.1		
National	2002	67	67	67	32	45	33	11	20	11	33.8	99.9		
Leicestershire	2001	73	77	79	36	52	46	9	23	13	35.0	-		
National	2001	65	66	66	32	43	34	9	20	8	-	-		

**Leicestershire's Key Stage Three Performance (Rankings) against all LAs and Statistical Neighbour LAs**  
(2008 data by Local Authority not currently available) (1 = highest ranked, 149 = lowest ranked)  
Comparative data for 2008 has not yet been released

	Year	5+			6+			7+			APS	VA	LAs	
		English	Maths	Science	English	Maths	Science	English	Maths	Science				
National	2007	8	4	1	23	13	9	28	23	18	12	2*	149	*CVA
New CS Stat. N'bours	2007	1	1	1	2	1	1	2	1	1	1	1*	11	*CVA
National	2006	7	5	4	20	10	12	31	22	23	13	6	149	
New CS Stat. N'bours	2006	1	1	1	1	1	1	2	1	1	1	1	11	
Stat. N'bours	2006	1	1	1	1	1	1	2	1	1	1	1	11	
National	2005	4	5	5	11	10	11	-	-	-	13	3	149	
Stat. N'bours	2005	1	1	1	1	1	1	-	-	-	1	1	11	
New CS Stat. N'bours	2005	1	1	1	1	1	1	-	-	-	1	1	11	
National	2004	6	6	3	23	10	8	-	-	-	12	3	149	
Stat. N'bours	2004	1	1	1	1	1	1	-	-	-	1	1	11	
National	2003	11	4	3	42	10	8	-	-	-	11	2	149	
Stat. N'bours	2003	3	1	1	5	1	1	-	-	-	1	1	11	
National	2002	8	9	3	29	10	9	-	-	-	14	2	149	
Stat. N'bours	2002	1	1	1	3	1	1	-	-	-	2	1	11	
National	2001	14	3	2	34	8	6	-	-	-	-	-	149	
Stat. N'bours	2001	1	1	1	3	1	1	-	-	-	-	-	11	

Notes: New CS Stat. N'bours (New Children Services Statistical Neighbours) relates to the new set of Statistical Neighbours issued in March 2007 by the DCSF following the revision of the previous Ofsted model to enable Children's Services Performance comparisons. "Stat. N'bours" relates to the previous Ofsted Statistical Neighbours that formed the basis of benchmarking comparisons prior to 2006.

Overall the gender gap in Leicestershire has widened in English due to a 2% decline in boys' 5+ attainment to 75% and a 1% decline in 6+ attainment to 32% (matched by an increase of 1% for girls at 6+ to 47%). Nationally the gap has also widened despite boys showing a 1% increase at 6+. This is due to girls' 6+ attainment increasing by 2% to 41%.

Locally and nationally, increases in girls' attainment in Reading at 6+ and 7+ have out-stripped that of boys leading to a widening of the gender gap at these higher levels. Locally, there has been no change in the gender comparison for Reading at 5+ while nationally the gender gap has widened slightly by 1% reflecting the differentials at 6+ and 7+.

In Writing, the gender gap for Leicestershire pupils at 6+ and 7+ is unchanged from 2007 while the differential for 5+ attainment has shown a considerable increase of 3% in favour of girls. On a national basis 6+ and 7+ attainment show increases in favour of girls' attainment while the gap remains unchanged at 5+ with both boys and girls achieving increases of 3%.

In Leicestershire, the gender gap in Maths shows no change at 5+ and 6+ with girls narrowing the gap at 7+ by 2%. Boys' attainment at each level has remained fairly static (showing a slight increase of 1% at 7+) while girls have achieved increases of 1% and 2% respectively at 6+ and 7+. Attainment at 5+ remains unchanged from 2007. Nationally, the gender gap has remained static with girls slightly out-performing boys at 5+ while the converse is true at 6+. Attainment at 7+ has shown a widening of the gender gap in favour of boys with an increase of 2%.

Overall, Leicestershire boys continue to perform stronger than girls in Science. However, the gap in attainment at 7+ has lessened by 1% and remained unchanged at 6+ still running at 3%. Both boys and girls showed a slight drop in attainment at 5+ with boys slightly out-performing girls by 1%. The national picture has seen a reversal of 2007 where boys now out-perform girls at each attainment level. Although boys only showed gains at 6+, girls' attainment decreased at 5+, 6+ and 7+.

Overall Leicestershire performs significantly better than the national benchmarks in English, Maths and Science.

National data for comparison by ethnic group is not currently available.

## **Subject commentary:**

### **English**

English performance at 5+ shows a slight dip in line with national figures. 6+ attainment rose by 1% both locally and nationally. At 7+ Leicestershire saw a slight drop while the national attainment rate remained unchanged. Leicestershire students continue to perform better than the national average at all levels.

Overall, Leicestershire performs significantly better than the national benchmarks across genders.

### **Reading**

Attainment at 5+ shows a 2% decline both nationally and locally. Leicestershire attainment at 6+ saw a rise of 3% compared with only 1% nationally. Both National and local attainment at 7+ increased slightly by 1%. Leicestershire continues to perform well above the national comparators from 5+ to 7+ across genders.

### **Writing**

At 5+, Writing has shown a slight increase locally, rising to 81% compared to 77% nationally. However, the national rate of increase is greater than that seen locally leading to a narrowing of in the gap between local and national performance. National average attainment rates have increased 5% since 2004 while, after an initial increase, Leicestershire attainment at 5+ now shows no change from 2004 levels. Attainment at 6+ has increased at similar rates both nationally and locally. While there is no change for Leicestershire at 7+, the national rate has increased by 2% bringing average attainment at 7+ in line with Leicestershire students for the first time.

### **Mathematics**

Locally, there were slight increases at 5+ and 7+ while 6+ remained unchanged. The increases are in line with the national average which also saw a slight increase at 6+. National attainment rates at 7+ are at their highest ever levels while Leicestershire continues to perform significantly higher against each of the comparators.

Overall Leicestershire performs significantly better than the national benchmarks by gender and by each ethnic group.

### **Science**

There has been a 2% decline at 5+ both locally and nationally. For Leicestershire, this decline is repeated at 6+ and 7+ while the national decline for both of these is 1%. Leicestershire continues to comfortably out-perform national indicators and performs significantly better than the national benchmarks.

### **ICT**

Locally, there have been small improvements of 1% respectively at 5+ and 7+ while greater gains were made at 6+ with a 5% increase to 31% overall. The gap in attainment between boys and girls remains unchanged at 5+ with girls out-performing boys by 7% and also at 7+ where attainment rates are equal. However, the 6+ attainment gap has widened due to girls achieving an improvement of 7% compared to boys' 4% increase.

There is no national comparative data currently available.

### **Other Foundation Subjects**

Within Leicestershire schools, improvements continue to be made at 5+ assessment thresholds across all Foundation subjects with most showing small increases of between 1% and 2%. Following three fairly static years, Music has shown the greatest increase at 5+ with a 6% rise to 67% overall. 6+ assessment rates show varying degrees of improvement with Art, Design & Technology, Geography and History all making strong advances of between 3% and 5%. 6+ Languages remains unchanged from 2007 while P.E and Music increased by 1% and 2% respectively. As with 5+ attainment, there have been small increases at 7+ in most subjects with only P.E. remaining static at 7%. Design & Technology showed the greatest increase at 7+ rising 3% to a five year high of 7%.

There is no national comparative data currently available.

Girls continue to significantly out-perform boys in all foundation subjects (apart from P.E.) with the greatest differential generally being seen at 6+ except in Languages which sees a wider gap at 5+. Art and Design and Technology remain the subjects with the most notable differentials in favour of girls, followed closely by Languages and History then Geography and Music.

The differences in attainment levels for P.E. are smaller than for other subjects. Boys out-perform girls by only 2% at 5+ and by 4% at 7+. This compares to an average differential of 10% at 5+ and 6% at 7+ across the other Foundation subjects where girls out-perform boys. The widest gap in attainment for P.E is at 6+ where boys out-perform girls by 11%. However, again, this margin is narrower than for other subjects where the average differential is 19% in favour of girls.

Appendix A

**KS3 Test Result Completions as at 09/09/2008**

Estab.	School	English	Maths	Science
1104	Student Support Service PRU	42%	100%	89%
4000	Humphrey Perkins High School	100%	100%	100%
4005	King Edward VII School	100%	100%	100%
4007	Newbridge High School	100%	100%	100%
4010	Mount Grace High School	100%	100%	100%
4011	Heathfield High School	100%	100%	100%
4012	Ibstock Community College	100%	100%	100%
4014	Limehurst High School	100%	100%	100%
4015	Lutterworth High School	100%	100%	100%
4016	Market Bosworth High School and Community College	100%	100%	100%
4017	Welland Park Community College	100%	81%	98%
4018	South Charnwood High School	99%	99%	100%
4022	Roundhill Community College	98%	100%	100%
4026	Hastings High School	99%	99%	99%
4028	Ivanhoe College	100%	100%	100%
4029	The Stonehill High School	98%	100%	98%
4030	The Garendon High School	47%	100%	100%
4031	Castle Donington Community College	100%	100%	99%
4032	Martin High School	100%	100%	100%
4034	Shepshed High School	99%	99%	100%
4035	Castle Rock High School	100%	99%	100%
4036	Belvoir High School and Community Centre	99%	100%	100%
4038	Winstanley Community College	100%	100%	100%
4041	Gartree High School	100%	100%	100%
4043	Manor High School	100%	100%	100%
4044	John Ferneley High School	100%	99%	100%
4049	Wreake Valley Community College	98%	99%	100%
4051	Brookvale High School	100%	100%	100%
4053	Redmoor High School	100%	100%	100%
4054	Leysland High School	99%	100%	100%
4055	Kibworth High School and Community Centre	99%	99%	100%
4057	Thomas Estley Community College	100%	100%	100%
4268	Woodbrook Vale High School	100%	99%	100%
4506	Brockington College	97%	100%	100%
4601	De Lisle Catholic Science College	100%	100%	100%
4602	Saint Martin's Catholic School, Stoke Gol	99%	100%	100%
5400	The Long Field High School	100%	100%	100%
5401	Bushloe High School	100%	100%	100%
5402	South Wigston High School	100%	99%	100%
5403	Abington High School	100%	100%	100%
7002	Maplewell Hall School	100%	100%	100%
7005	Wigston Birkett House Community Special School	100%	100%	100%
7008	Forest Way School	100%	100%	100%
7215	Birch Wood	100%	100%	100%
7216	Dorothy Goodman School	100%	100%	100%

# Key Stage Three Results 2008: Core Subject Summary

855 Leicestershire

<b>Boys</b>	<b>Other</b>	<b>1</b>	<b>2</b>	<b>3</b>	<b>4</b>	<b>5</b>	<b>6</b>	<b>7</b>	<b>8</b>	<b>E</b>	<b>Level 5 &amp; above</b>	<b>Level 6 &amp; above</b>	<b>Level 7 &amp; above</b>
English Teacher Assessment	1	0	1	4	17	42	30	5	0	0	77%	35%	5%
English Test	8	0	0	3	14	43	26	6	0	0	75%	32%	6%
Reading Test	14	0	0	0	13	39	25	9	0	0	73%	34%	9%
Writing Test	11	0	0	0	14	41	25	9	0	0	75%	34%	9%
Mathematics Teacher Assessment	1	0	0	3	11	22	29	25	9	0	85%	63%	34%
Mathematics Test	2	0	0	4	10	18	29	26	11	0	84%	67%	38%
Science Teacher Assessment	1	0	0	2	14	32	34	16	0	0	82%	50%	16%
Science Test	3	0	0	2	14	29	33	19	0	0	82%	52%	19%
ICT Teacher Assessment	1	0	0	2	16	54	24	3	0	0	81%	26%	3%

<b>Girls</b>	<b>Other</b>	<b>1</b>	<b>2</b>	<b>3</b>	<b>4</b>	<b>5</b>	<b>6</b>	<b>7</b>	<b>8</b>	<b>E</b>	<b>Level 5 &amp; above</b>	<b>Level 6 &amp; above</b>	<b>Level 7 &amp; above</b>
English Teacher Assessment	1	0	0	2	9	38	41	10	0	0	89%	51%	10%
English Test	4	0	0	1	8	39	35	12	0	0	87%	47%	12%
Reading Test	8	0	0	0	8	34	32	18	0	0	84%	50%	18%
Writing Test	5	0	0	0	8	41	32	14	0	0	87%	46%	14%
Mathematics Teacher Assessment	1	0	0	3	9	24	31	25	6	0	86%	62%	32%
Mathematics Test	2	0	0	4	11	20	29	26	8	0	83%	64%	34%
Science Teacher Assessment	1	0	0	2	11	36	35	15	0	0	85%	49%	15%
Science Test	2	0	0	3	15	31	31	18	0	0	81%	49%	18%
ICT Teacher Assessment	1	0	0	1	10	51	33	3	0	0	88%	36%	3%

<b>Boys &amp; Girls</b>	<b>Other</b>	<b>1</b>	<b>2</b>	<b>3</b>	<b>4</b>	<b>5</b>	<b>6</b>	<b>7</b>	<b>8</b>	<b>E</b>	<b>Level 5 &amp; above</b>	<b>Level 6 &amp; above</b>	<b>Level 7 &amp; above</b>
English Teacher Assessment	1	0	0	3	13	40	35	7	0	0	83%	43%	7%
English Test	6	0	0	2	11	41	30	9	0	0	81%	40%	9%
Reading Test	11	0	0	0	11	36	28	13	0	0	78%	42%	13%
Writing Test	8	0	0	0	11	41	28	11	0	0	81%	40%	11%
Mathematics Teacher Assessment	1	0	0	3	10	23	30	25	8	0	85%	63%	33%
Mathematics Test	2	0	0	4	10	19	29	26	10	0	84%	65%	36%
Science Teacher Assessment	1	0	0	2	13	34	34	16	0	0	84%	50%	16%
Science Test	2	0	0	2	14	30	32	19	0	0	81%	51%	19%
ICT Teacher Assessment	1	0	0	1	13	53	28	3	0	0	84%	31%	3%

		<b>Average Level</b>	<b>Average Point Score</b>
<b>Boys</b>	English Test	5.5	33.3
	Reading Test	5.5	33.3
	Writing Test	5.6	33.5
	Mathematics Test	6.4	38.7
	Science Test	6.0	36.0
	ICT Teacher Assessment	5.6	33.5
<b>Girls</b>	English Test	5.9	35.6
	Reading Test	6.0	35.8
	Writing Test	5.6	35.6
	Mathematics Test	6.3	38.1
	Science Test	6.0	35.7
	ICT Teacher Assessment	5.8	34.6
<b>Boys &amp; Girls</b>	English Test	5.7	34.4
	Reading Test	5.7	34.5
	Writing Test	5.8	34.5
	Mathematics Test	6.4	38.4
	Science Test	5.7	35.9
	ICT Teacher Assessment	5.7	34.0

**Notes:**

Core Test/Task data based on DCSF datafeed September 2008. Foundation subject data based on Schools TA submission June/July 2008

'Other' refers to pupils who were absent, disapplied, took the statutory tests but failed to register a level and those working at a level below that assessed by the tests.

Pupils achieving a grade "B" or "N" in Maths and Science have been scored as gaining a Level 2 or 15 points.

Pupils achieving a grade "B" or "N" in English have been scored as gaining a Level 3 or 21 points.

Average Level reflects the true fine grading of point scores, e.g. 33 points represents Level 5.5 and 39 points represents Level 6.5 etc.

## Key Stage Three Results 2008: Foundation Subject Summary

855 Leicestershire

<b>Boys</b>	Other	1	2	3	4	5	6	7	8	EP	Level 5 & above	Level 6 & above	Level 7 & above
Art	1	0	0	1	12	53	27	5	0	0	85%	32%	5%
Design	1	0	0	1	13	55	26	4	0	0	84%	29%	4%
Geography	1	0	0	2	13	45	32	7	0	0	84%	39%	7%
History	1	0	0	1	14	44	31	8	0	0	83%	39%	8%
Languages	2	0	1	8	22	40	23	4	1	0	67%	27%	4%
Music	1	0	0	1	15	57	21	4	0	0	82%	25%	5%
P.E.	1	0	0	1	9	45	34	8	0	0	88%	43%	9%

<b>Girls</b>	Other	1	2	3	4	5	6	7	8	EP	Level 5 & above	Level 6 & above	Level 7 & above
Art	1	0	0	0	3	36	46	13	1	0	96%	61%	14%
Design	1	0	0	0	4	40	44	11	0	0	95%	55%	11%
Geography	1	0	0	1	8	37	40	11	1	0	90%	53%	13%
History	1	0	0	0	8	35	42	12	1	0	91%	56%	14%
Languages	1	0	1	3	12	42	34	7	1	0	83%	41%	8%
Music	1	0	0	0	8	53	31	6	1	0	91%	38%	7%
P.E.	1	0	0	0	8	58	27	5	0	0	90%	32%	5%

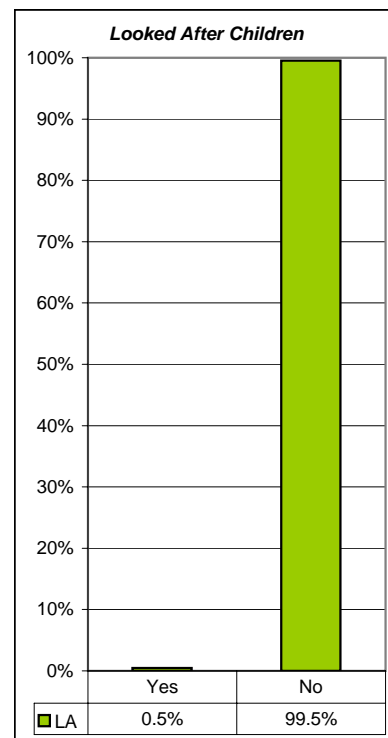
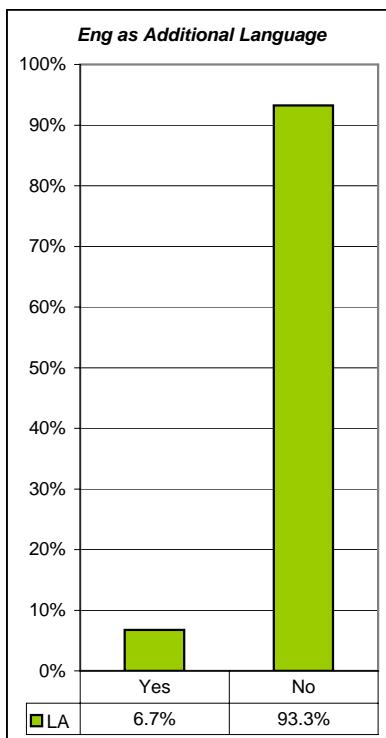
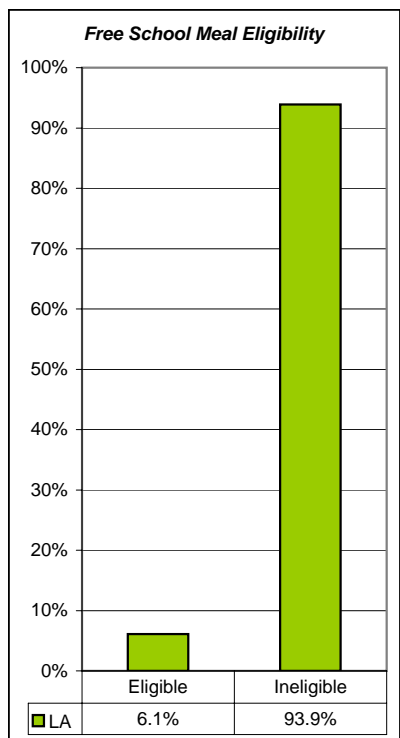
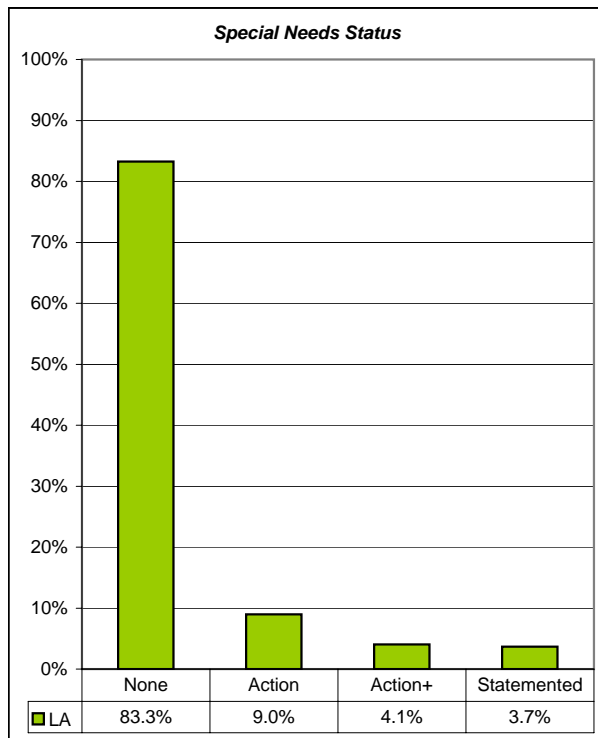
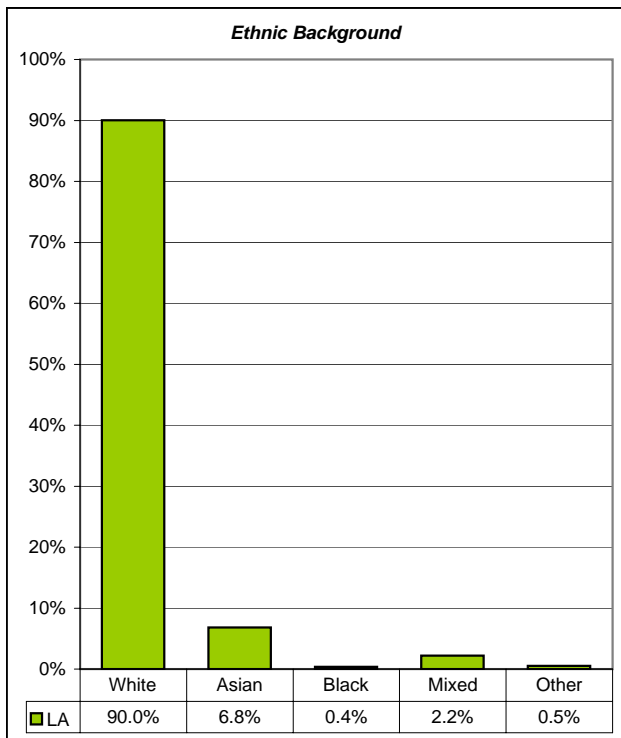
<b>Boys &amp; Girls</b>	Other	1	2	3	4	5	6	7	8	EP	Level 5 & above	Level 6 & above	Level 7 & above
Art	1	0	0	1	8	44	36	9	1	0	90%	46%	9%
Design	1	0	0	0	9	48	34	7	0	0	89%	42%	7%
Geography	1	0	0	1	10	41	36	9	1	0	87%	46%	10%
History	1	0	0	1	11	40	36	10	1	0	87%	47%	11%
Languages	1	0	1	5	17	41	28	5	1	0	75%	34%	6%
Music	1	0	0	1	12	55	26	5	0	0	87%	31%	6%
P.E.	1	0	0	1	9	51	31	7	0	0	89%	38%	7%

		Average Level	Average Point Score
<b>Boys</b>	Art	5.7	34.2
	Design	5.7	34.0
	Geography	5.8	34.8
	History	5.8	34.8
	Languages	5.4	32.3
	Music	5.6	33.7
	P.E.	5.9	35.4
<b>Girls</b>	Art	6.2	37.4
	Design	6.1	36.7
	Geography	6.1	36.4
	History	6.1	36.7
	Languages	5.8	34.8
	Music	5.9	35.2
	P.E.	5.8	34.6
<b>Boys &amp; Girls</b>	Art	6.0	35.8
	Design	5.9	35.3
	Geography	5.9	35.6
	History	6.0	35.7
	Languages	5.6	33.5
	Music	5.7	34.4
	P.E.	5.8	35.0

Foundation subject data based on Schools TA submission June/July 2008

# Key Stage Three Results : School Census Contextual Data

## 855 Leicestershire [Matched Pupils: 100%]



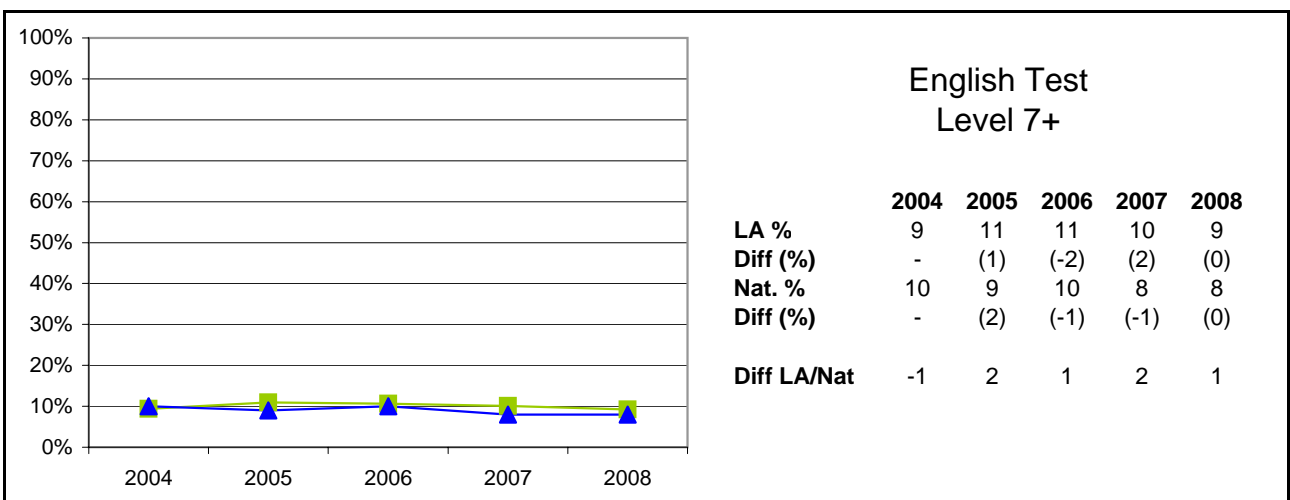
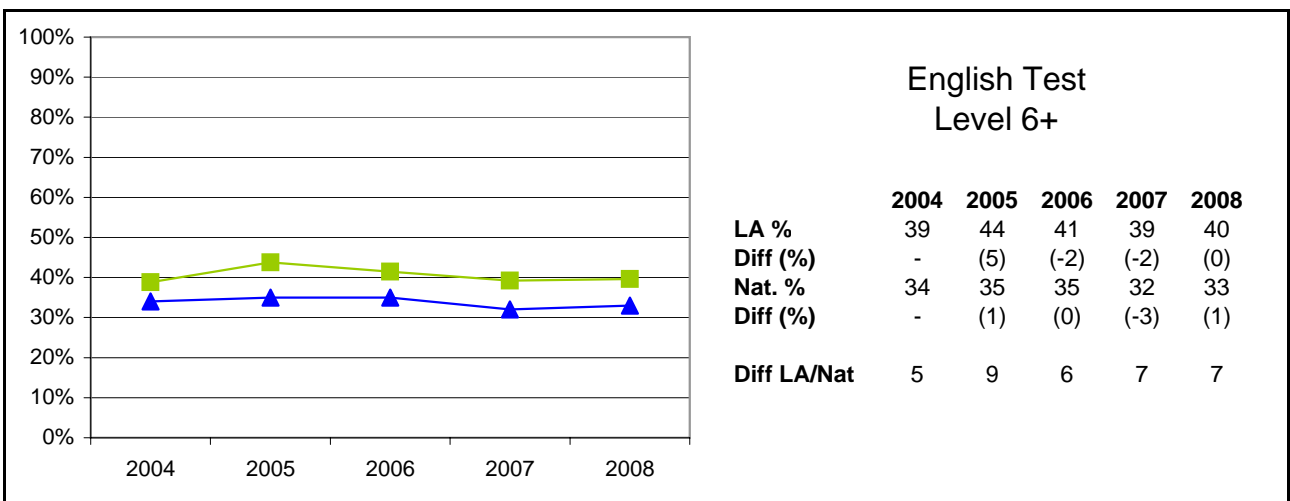
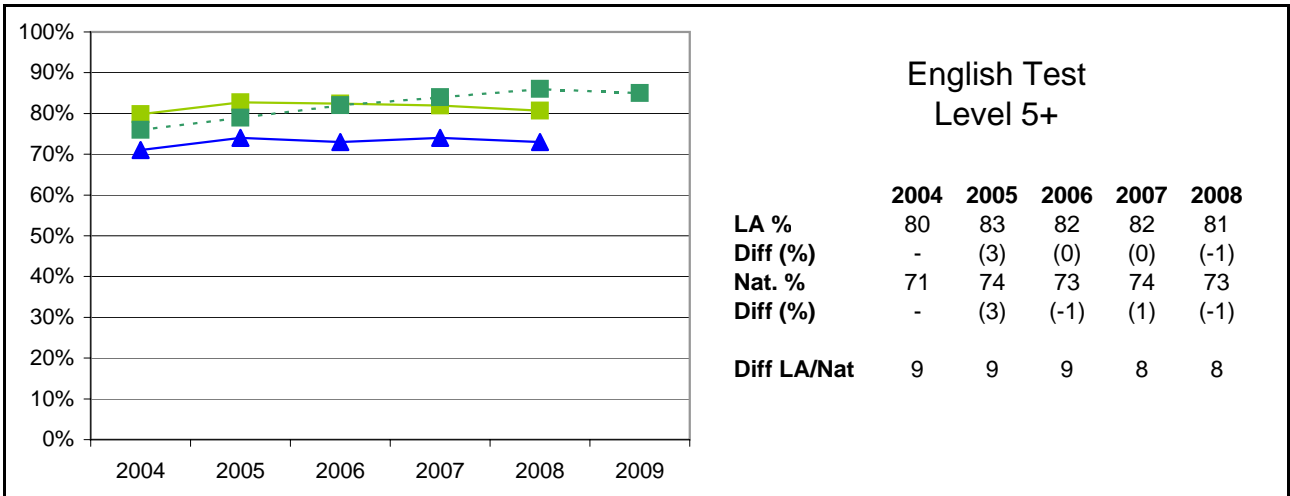
**Notes:**

The contextual data relates to the Key Stage 3 Cohort only

Ethnic Background does not include Refused and Information Not Obtained Classified pupils

# Key Stage Three Results 2004 - 2008

855 Leicestershire



**Notes:**

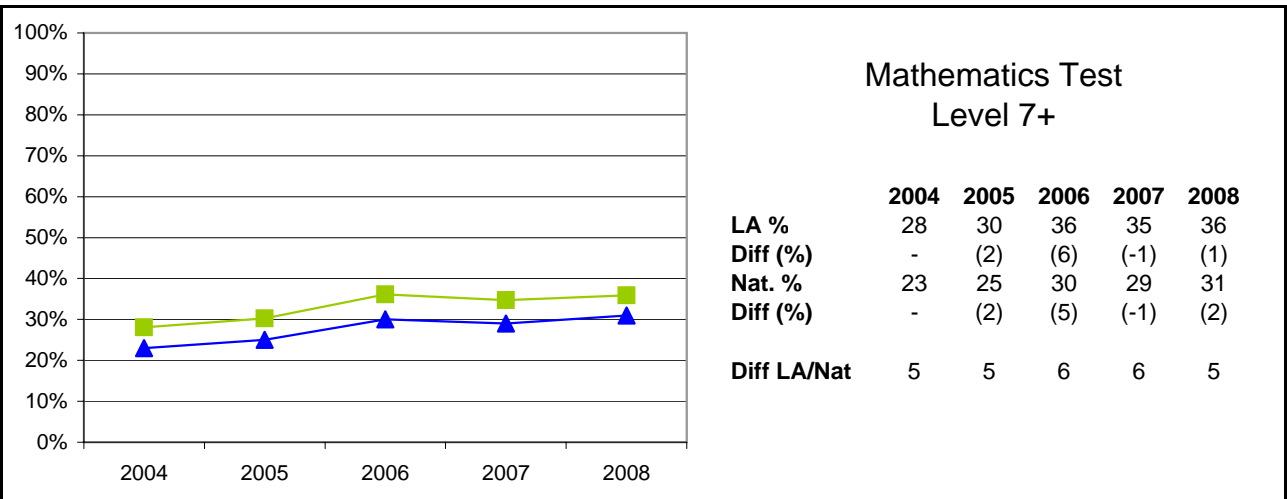
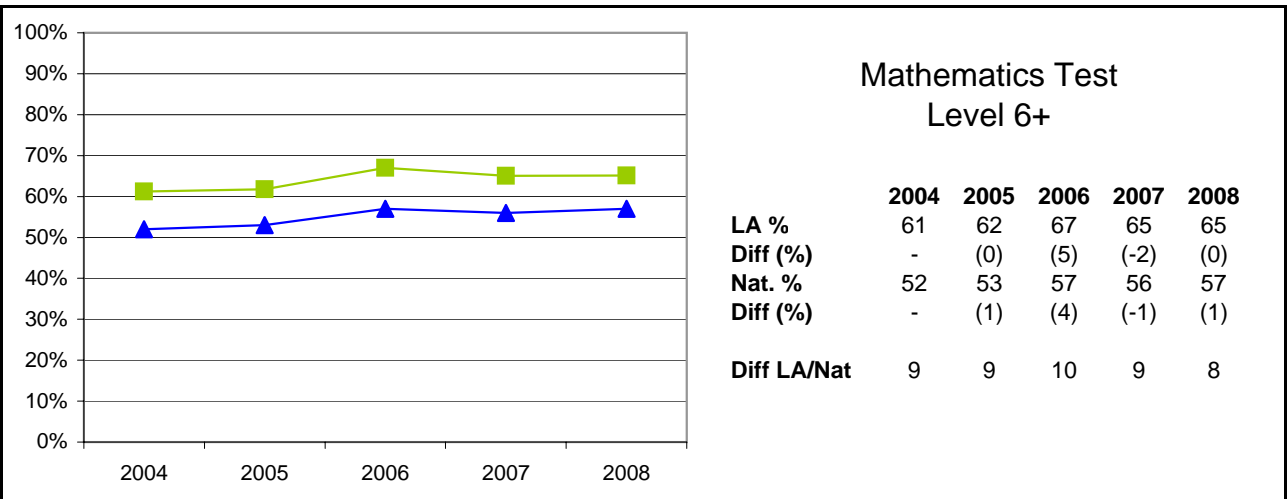
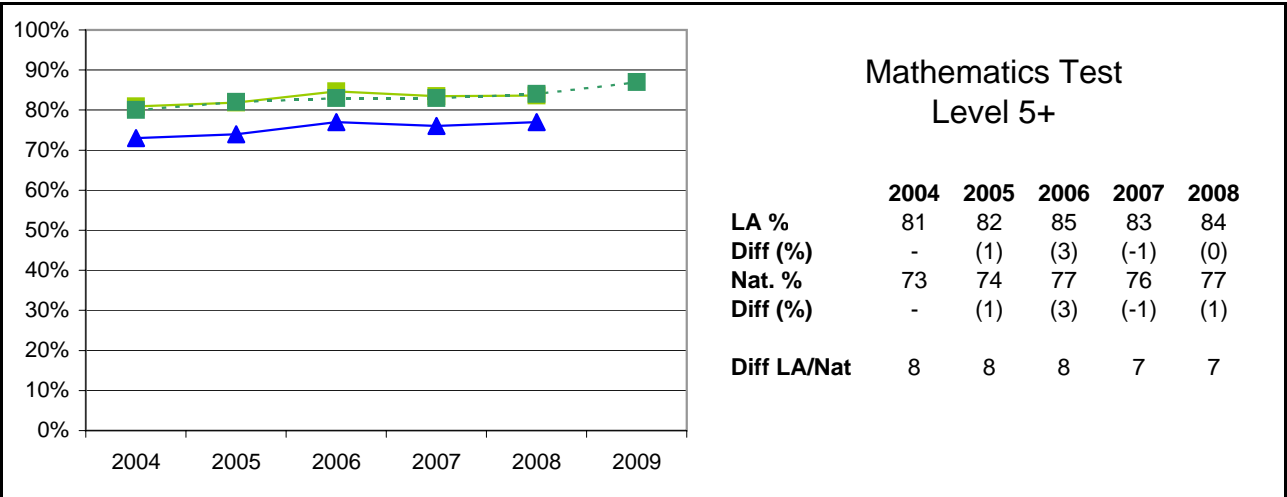
Figures derived from August 2008 DCSF information.

National figures obtained from DCSF information published within SFR 20/2008, National Curriculum Assessments at Key Stage 3 in England, 2008 (Provisional)

LA data for each year relates to all Schools (including Special Schools & the PRU). National data relates to all Schools (including Special Schools) but not PRUs

# Key Stage Three Results 2004 - 2008

855 Leicestershire

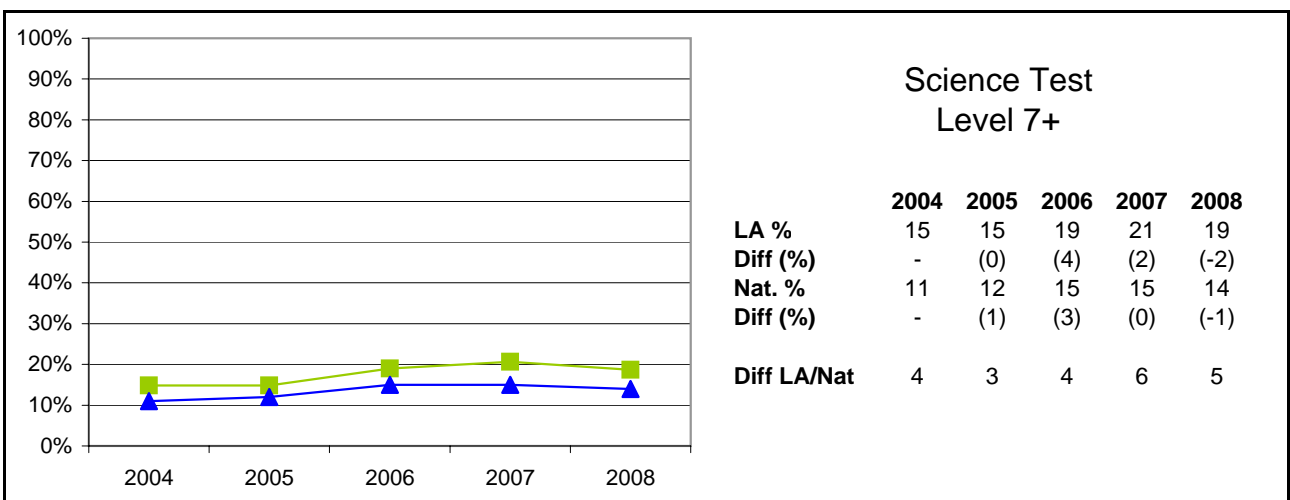
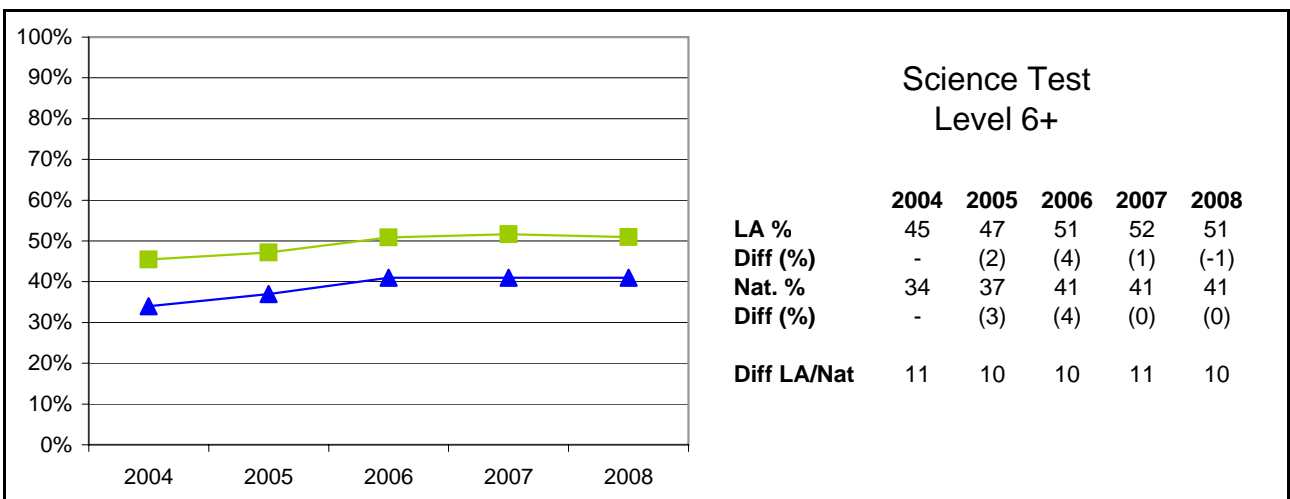
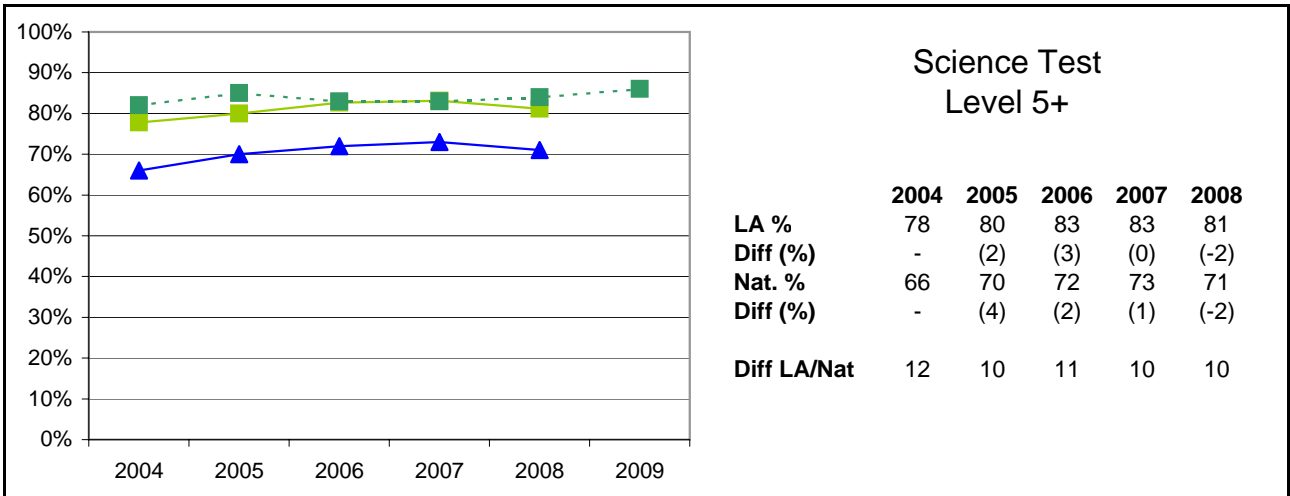


**Notes:**

Figures derived from August 2008 DCSF information.  
 National figures obtained from DCSF information published within SFR 20/2008, National Curriculum Assessments at Key Stage 3 in England, 2008 (Provisional)  
 LA data for each year relates to all Schools (including Special Schools & the PRU). National data relates to all Schools (including Special Schools) but not PRUs

# Key Stage Three Results 2004 - 2008

855 Leicestershire



**Notes:**

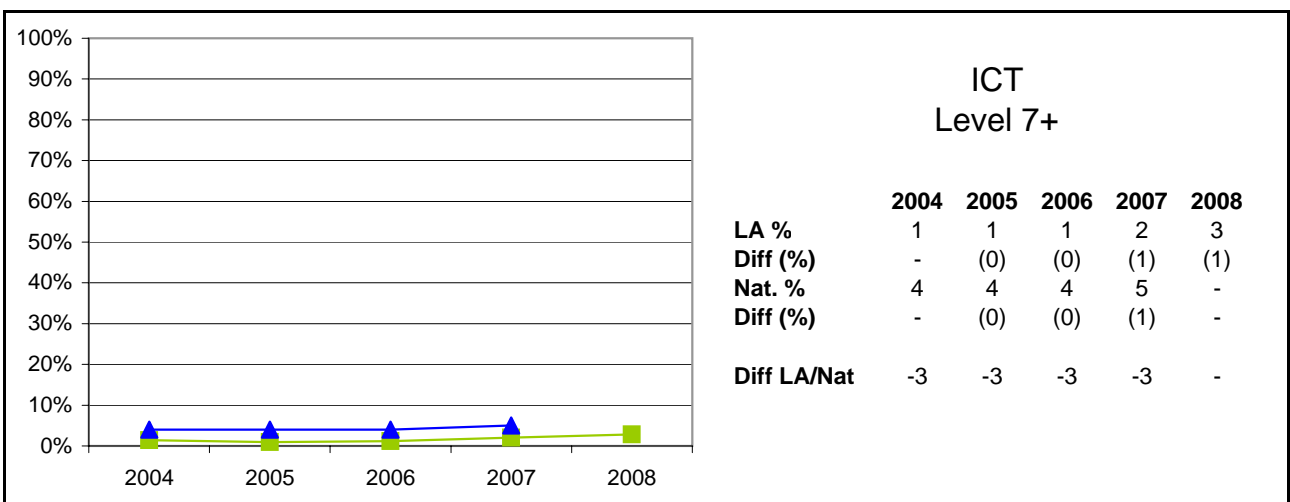
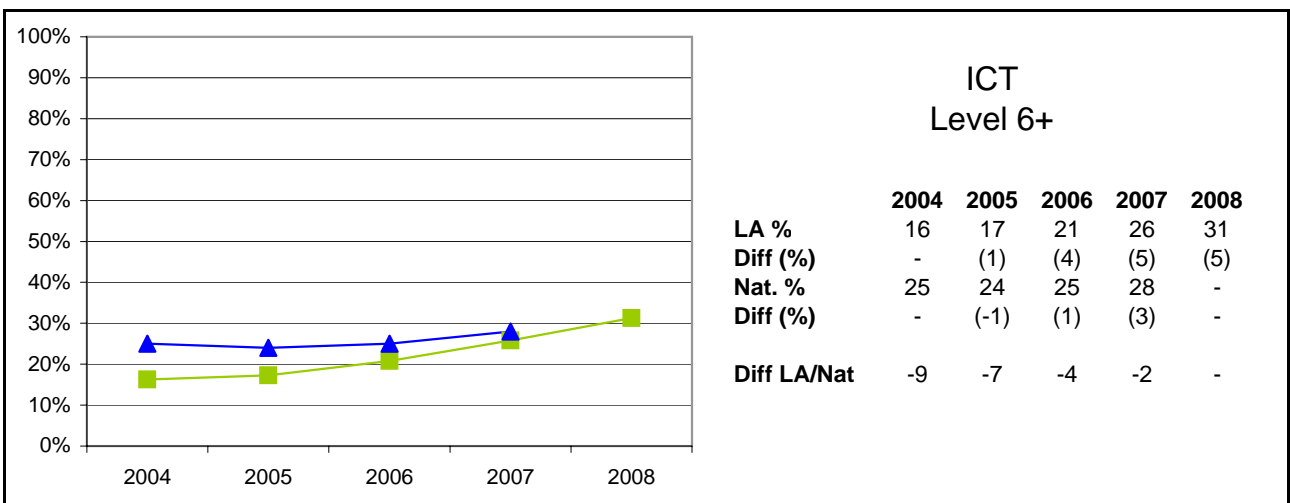
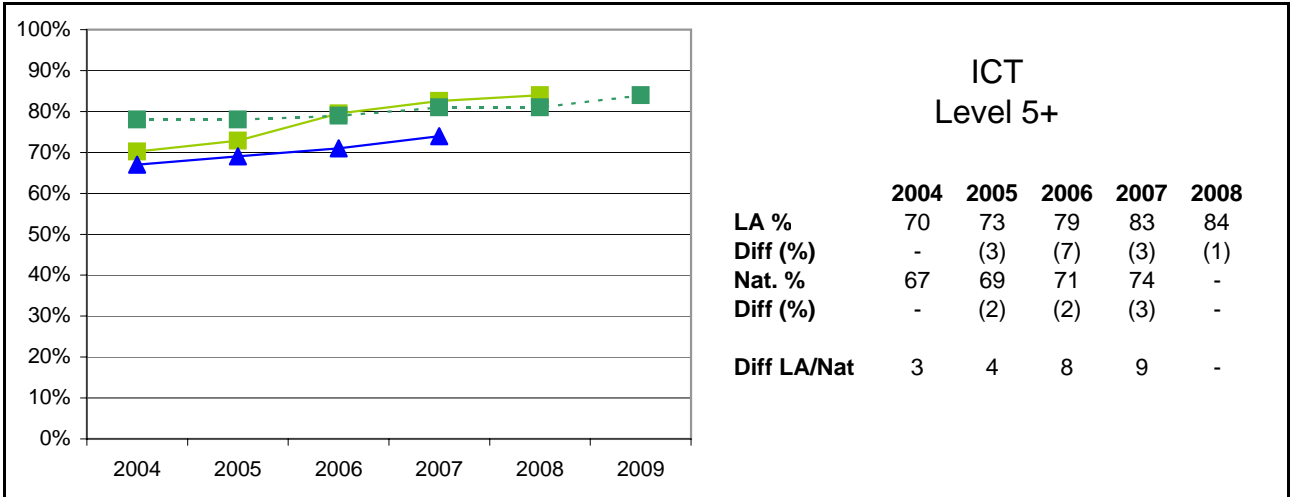
Figures derived from August 2008 DCSF information.

National figures obtained from DCSF information published within SFR 20/2008, National Curriculum Assessments at Key Stage 3 in England, 2008 (Provisional)

LA data for each year relates to all Schools (including Special Schools & the PRU). National data relates to all Schools (including Special Schools) but not PRUs

# Key Stage Three Results 2004 - 2008

855 Leicestershire



**Notes:**

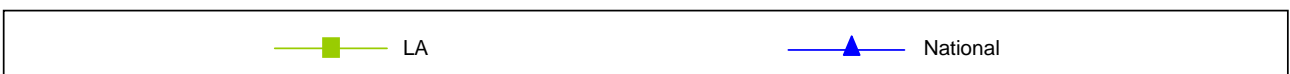
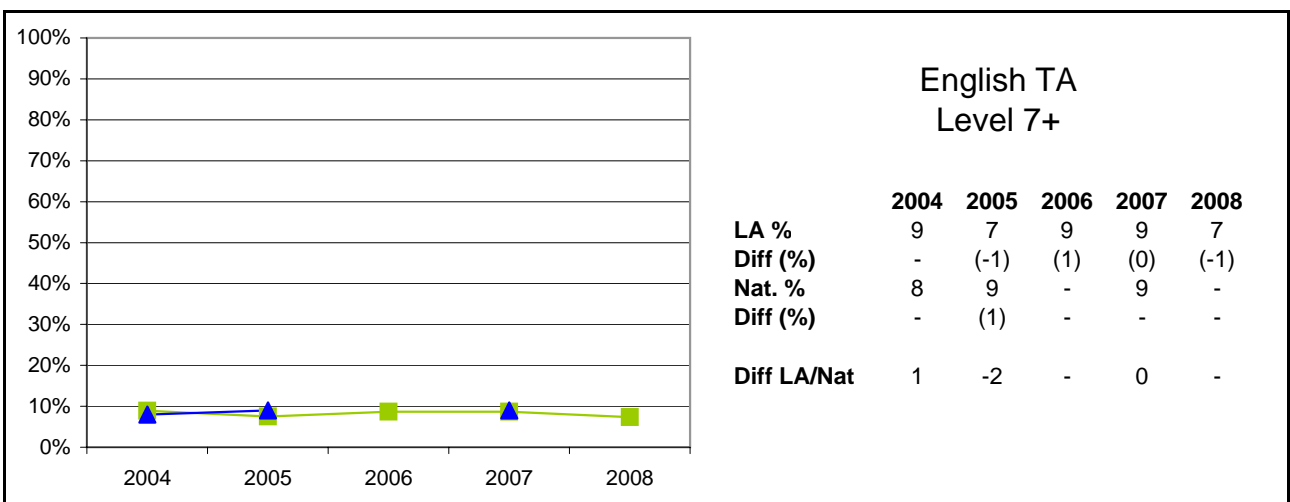
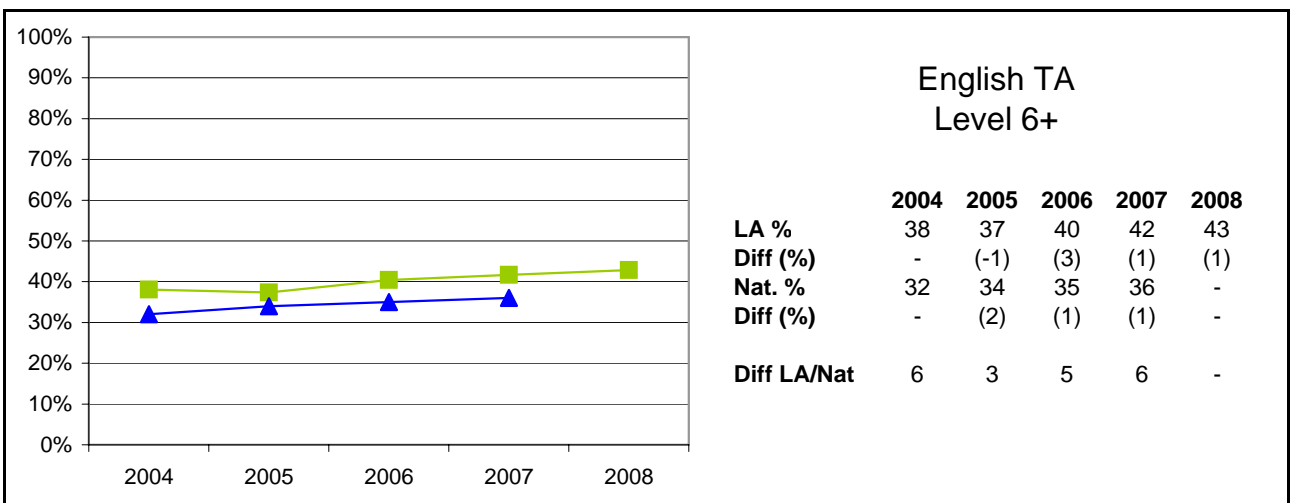
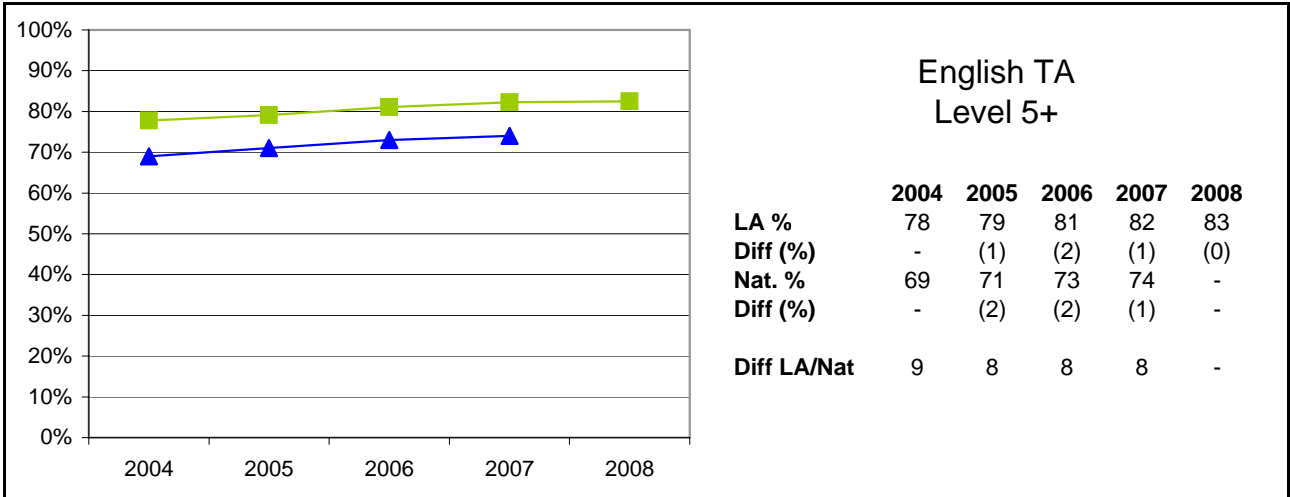
Figures derived from August 2008 DCSF information.

National figures obtained from DCSF information published within SFR 20/2008, National Curriculum Assessments at Key Stage 3 in England, 2008 (Provisional)

LA data for each year relates to all Schools (including Special Schools & the PRU). National data relates to all Schools (including Special Schools) but not PRUs

# Key Stage Three Results 2004 - 2008

855 Leicestershire



**Notes:**

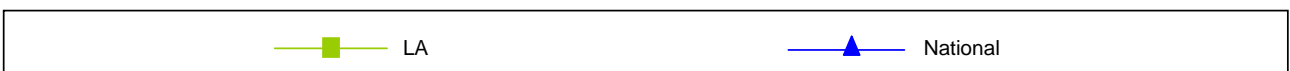
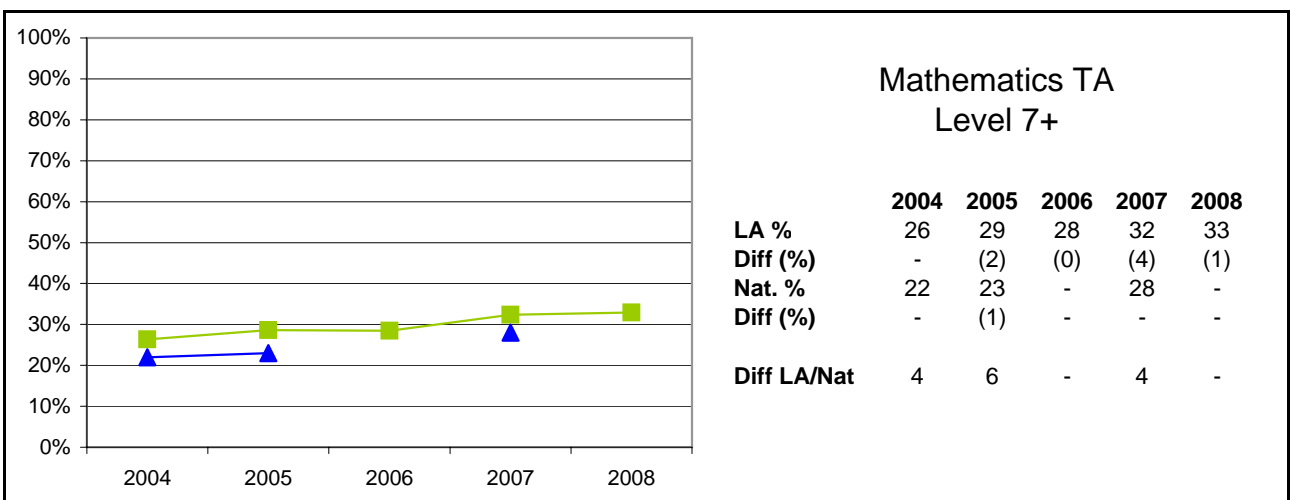
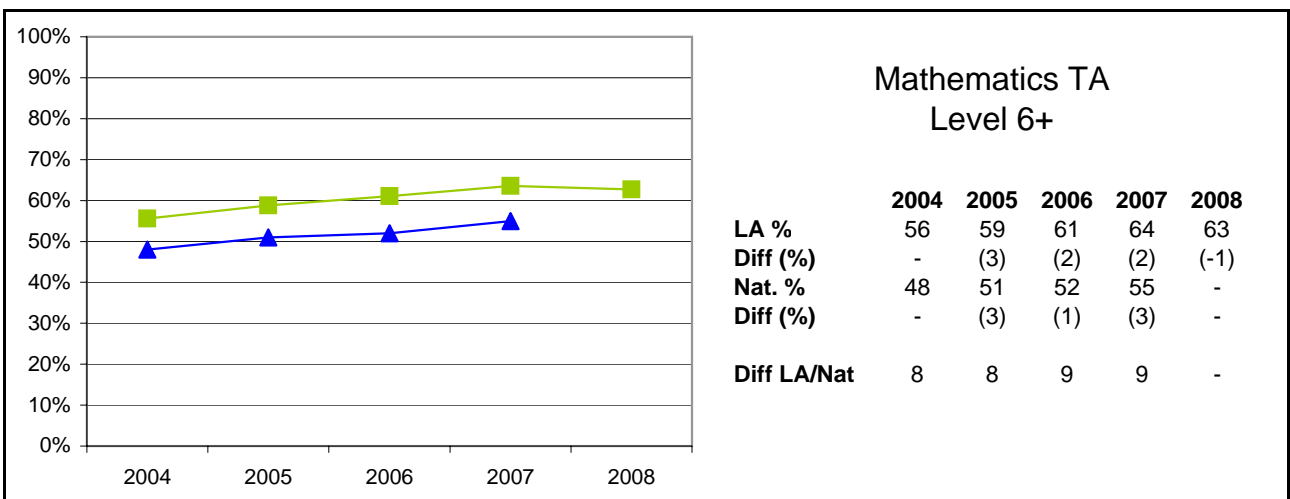
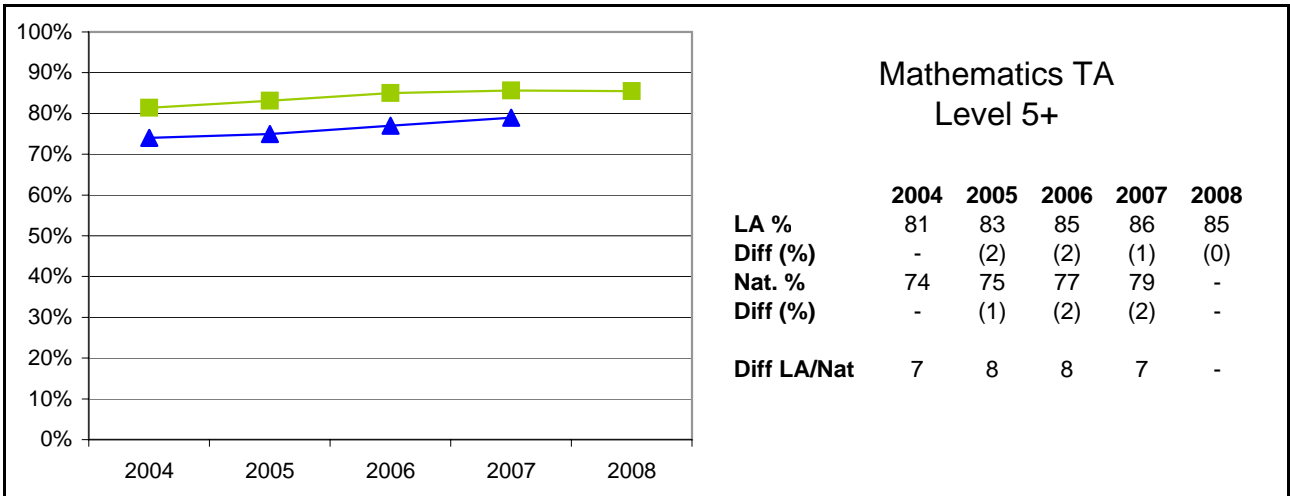
Figures derived from August 2008 DCSF information.

National figures obtained from DCSF information published within SFR 20/2008, National Curriculum Assessments at Key Stage 3 in England, 2008 (Provisional)

LA data for each year relates to all Schools (including Special Schools & the PRU). National data relates to all Schools (including Special Schools) but not PRUs

# Key Stage Three Results 2004 - 2008

855 Leicestershire



**Notes:**

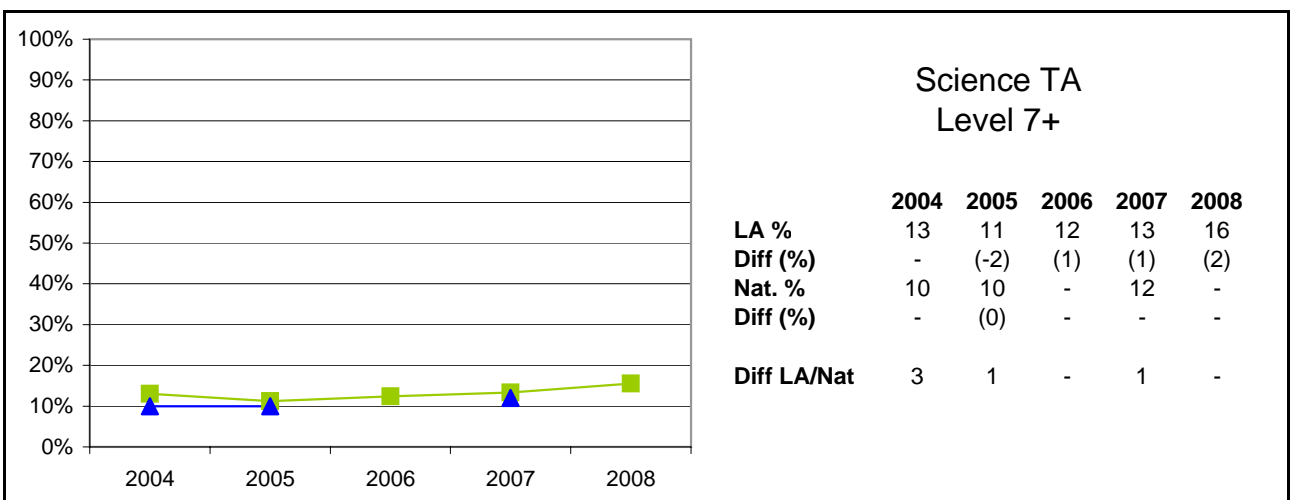
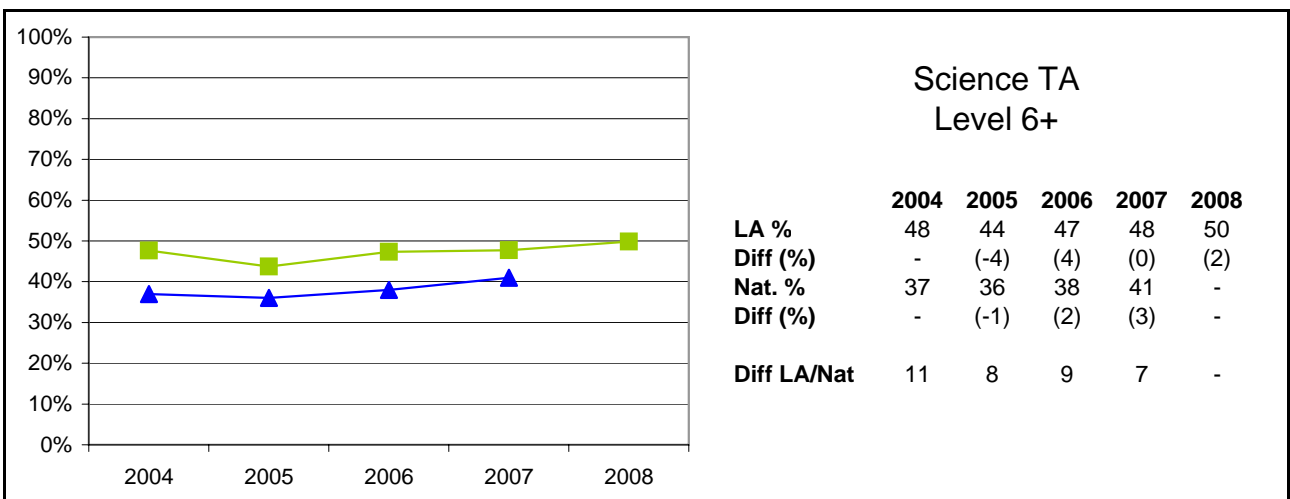
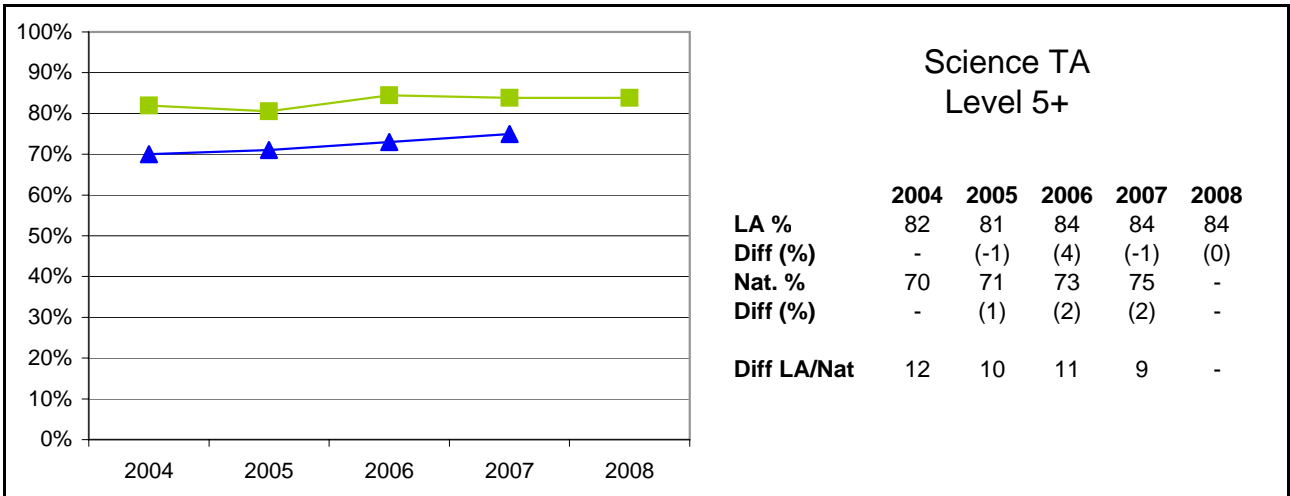
Figures derived from August 2008 DCSF information.

National figures obtained from DCSF information published within SFR 20/2008, National Curriculum Assessments at Key Stage 3 in England, 2008 (Provisional)

LA data for each year relates to all Schools (including Special Schools & the PRU). National data relates to all Schools (including Special Schools) but not PRUs

# Key Stage Three Results 2004 - 2008

855 Leicestershire



**Notes:**

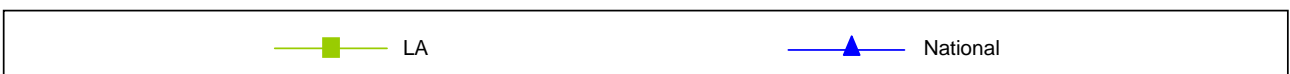
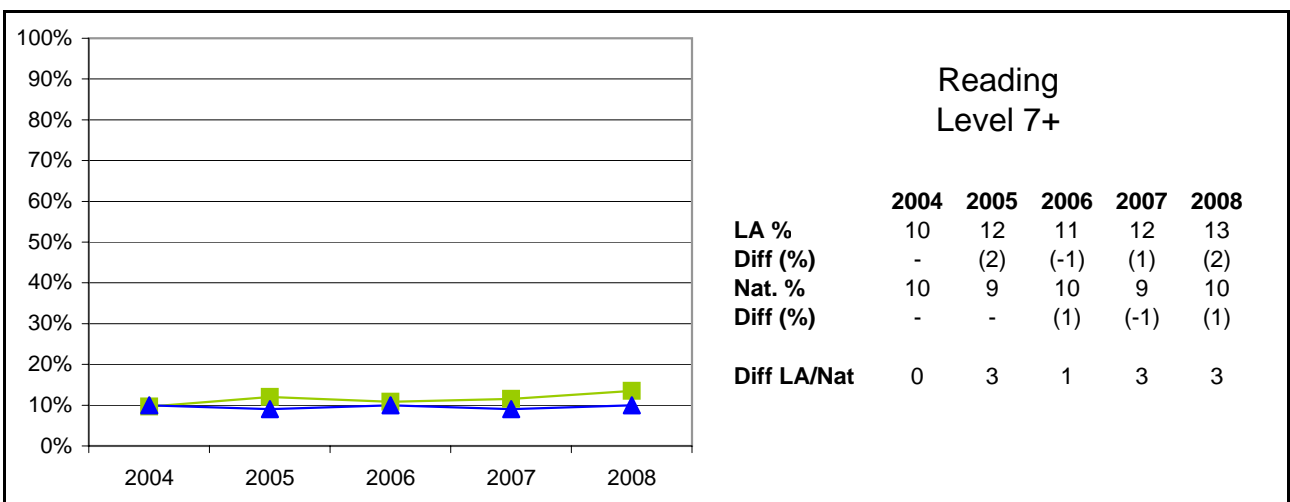
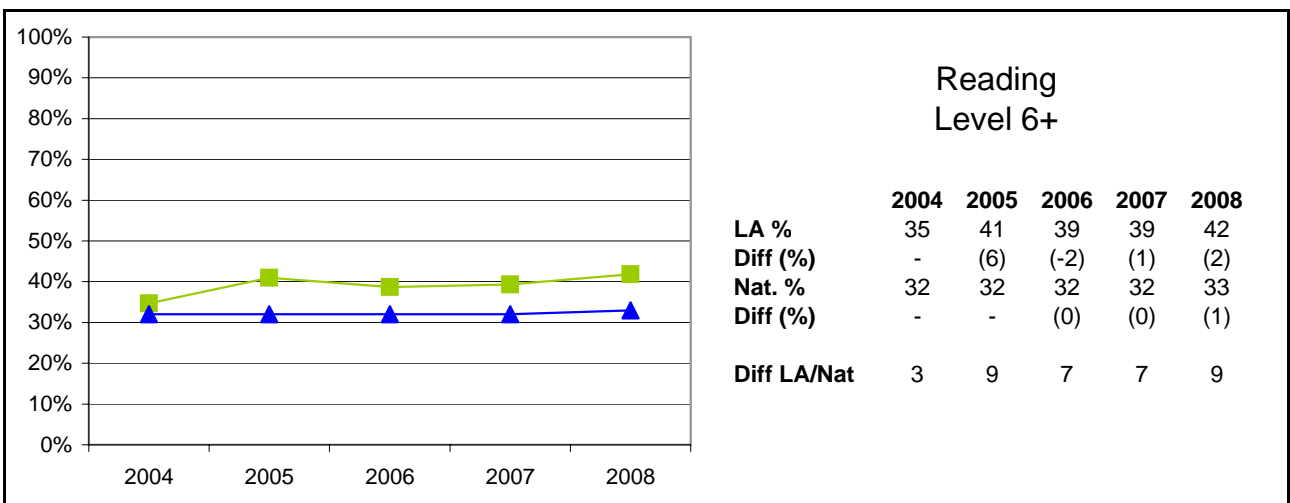
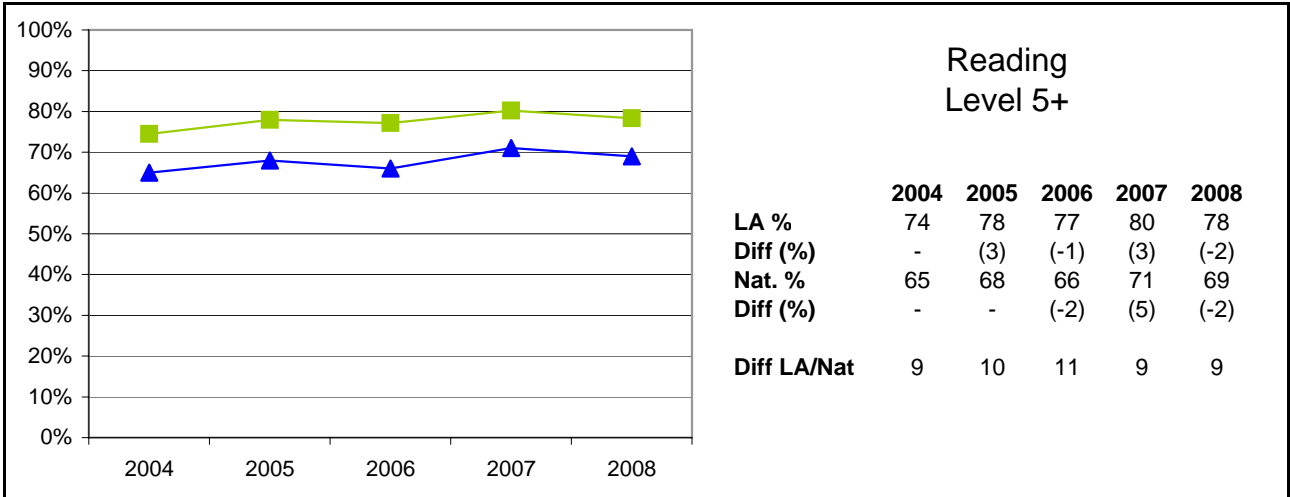
Figures derived from August 2008 DCSF information.

National figures obtained from DCSF information published within SFR 20/2008, National Curriculum Assessments at Key Stage 3 in England, 2008 (Provisional)

LA data for each year relates to all Schools (including Special Schools & the PRU). National data relates to all Schools (including Special Schools) but not PRUs

# Key Stage Three Results 2004 - 2008

855 Leicestershire



**Notes:**

Figures derived from August 2008 DCSF information.

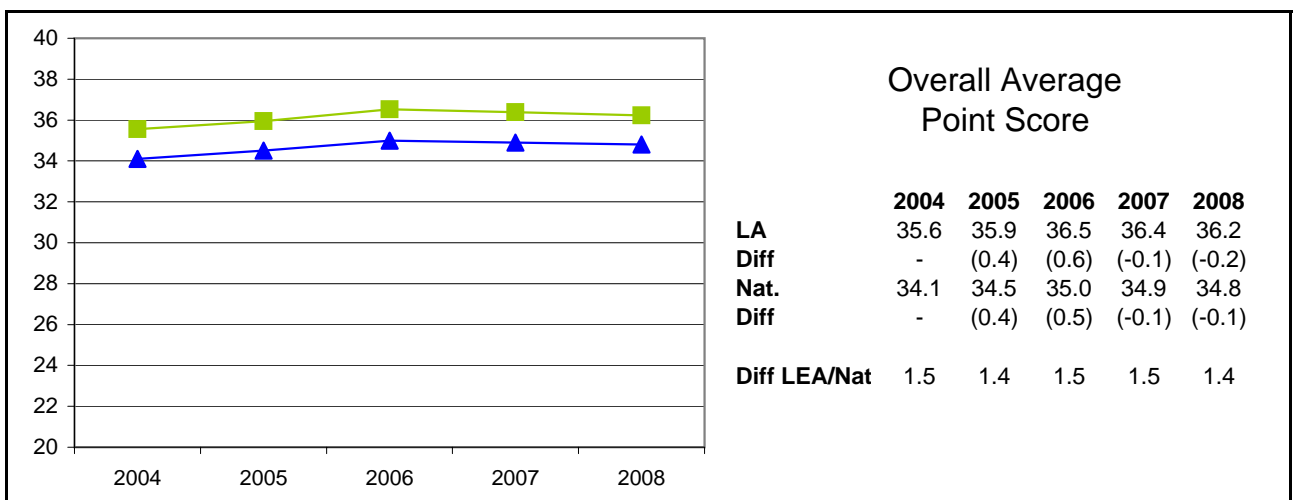
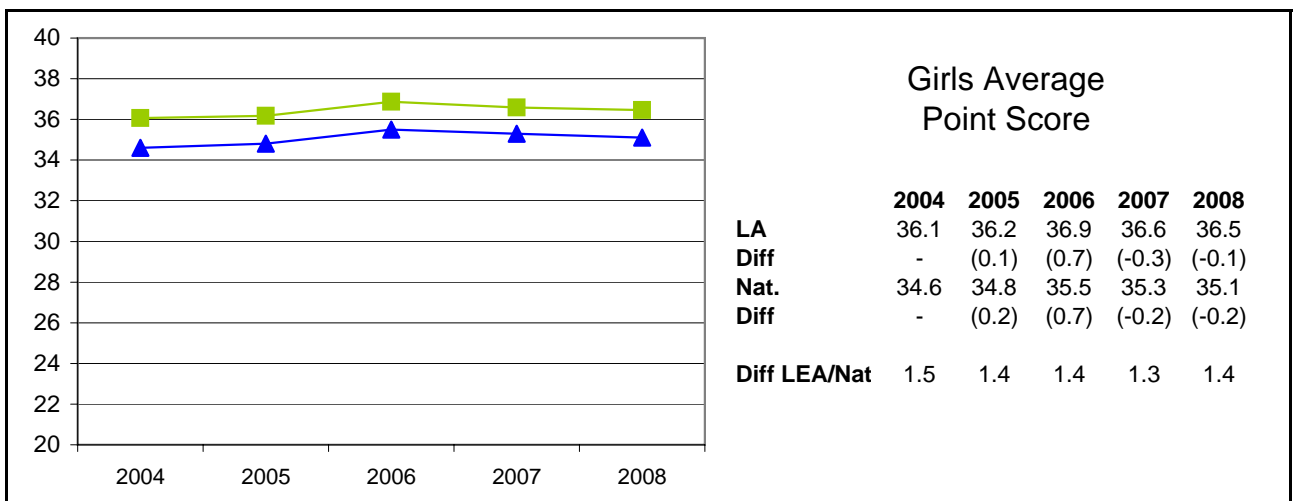
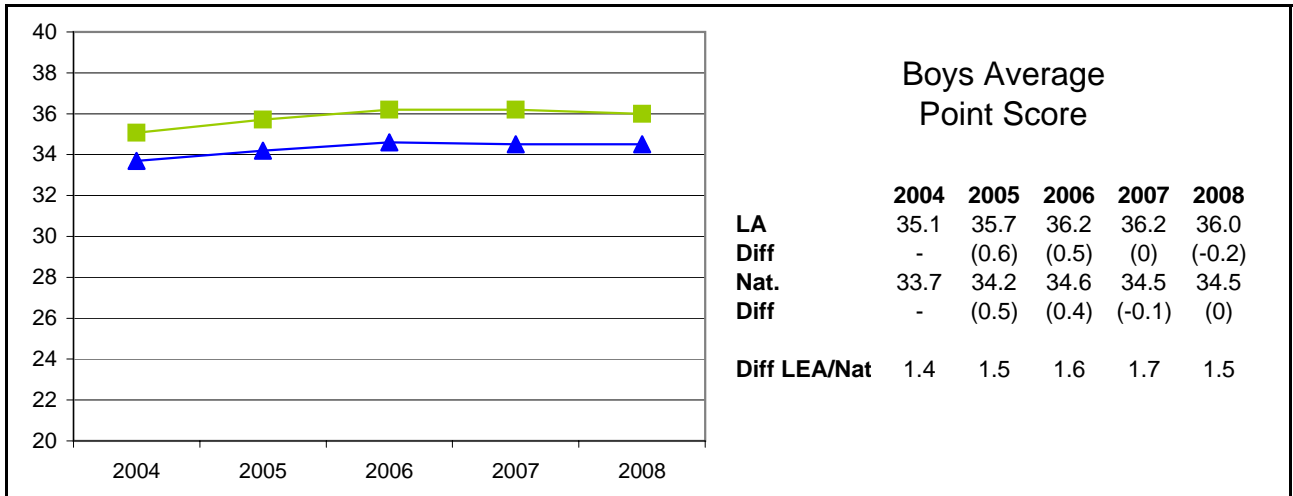
National figures obtained from DCSF information published within SFR 20/2008, National Curriculum Assessments at Key Stage 3 in England, 2008 (Provisional)

LA data for each year relates to all Schools (including Special Schools & the PRU). National data relates to all Schools (including Special Schools) but not PRUs



# Key Stage Three Results 2004 - 2008

855 Leicestershire



**Notes:**

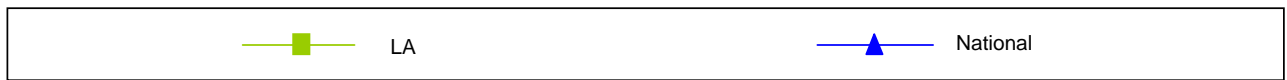
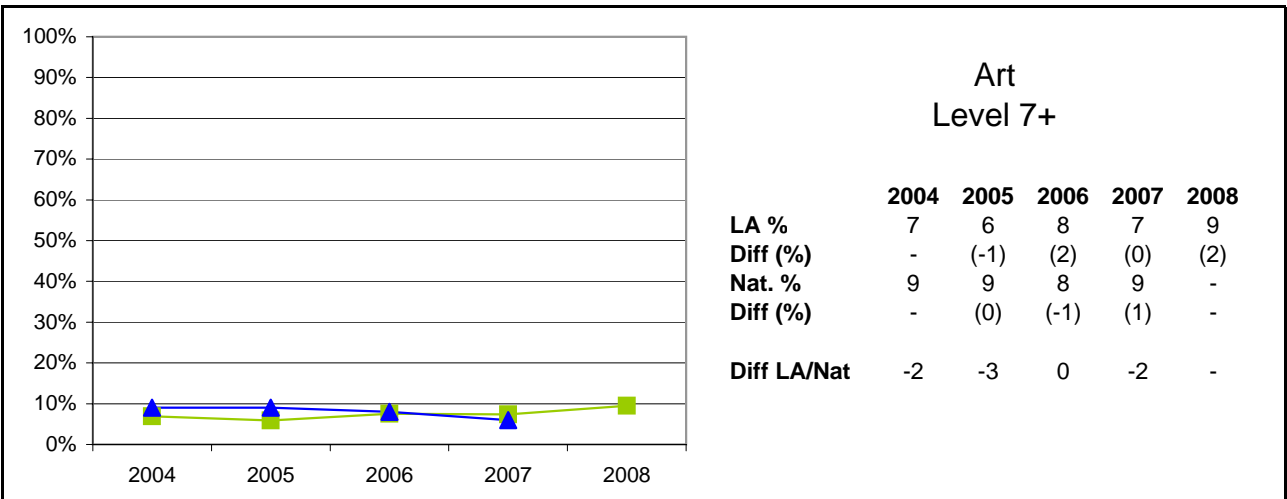
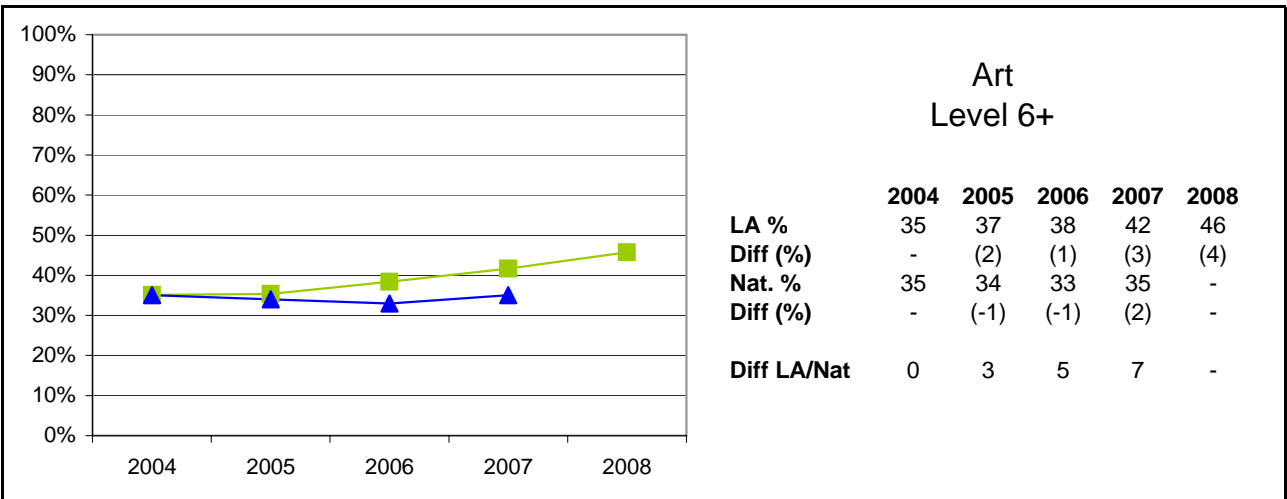
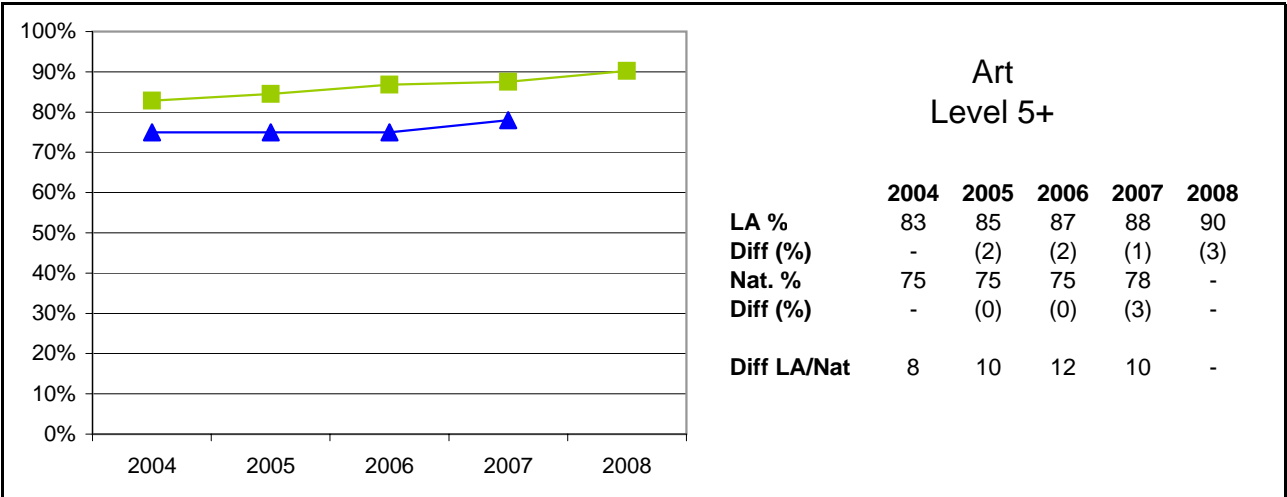
Figures derived from August 2008 DCSF information.

National figures obtained from DCSF information published within SFR 20/2008, National Curriculum Assessments at Key Stage 3 in England, 2008 (Provisional)

LA data for each year relates to all Schools (including Special Schools & the PRU). National data relates to all Schools (including Special Schools) but not PRUs

# Key Stage Three Foundation Subjects 2004 - 2008

855 Leicestershire



**Notes:**

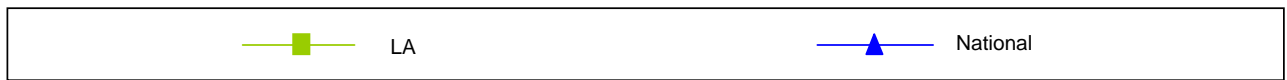
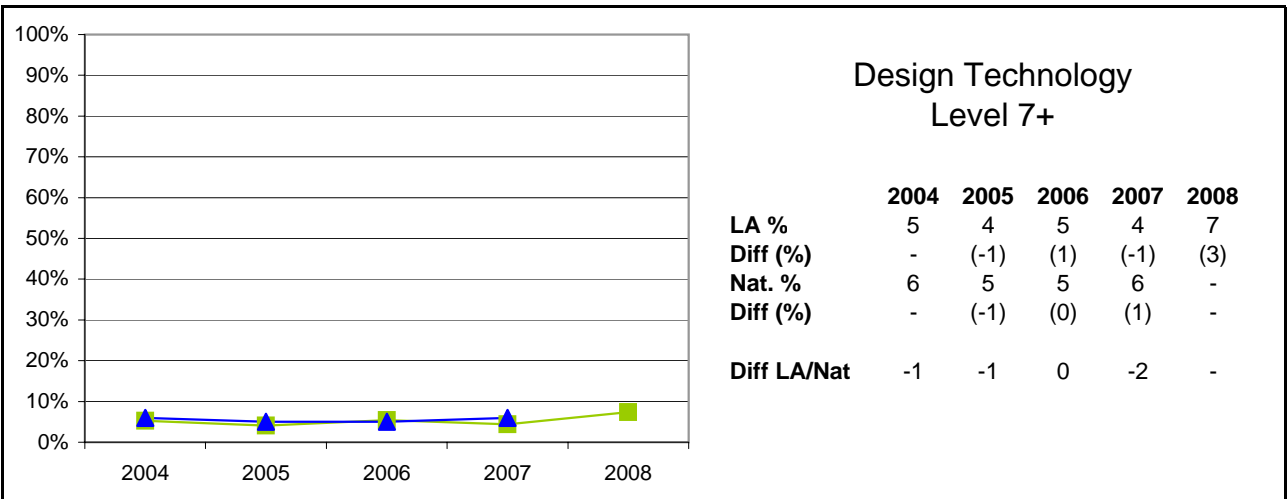
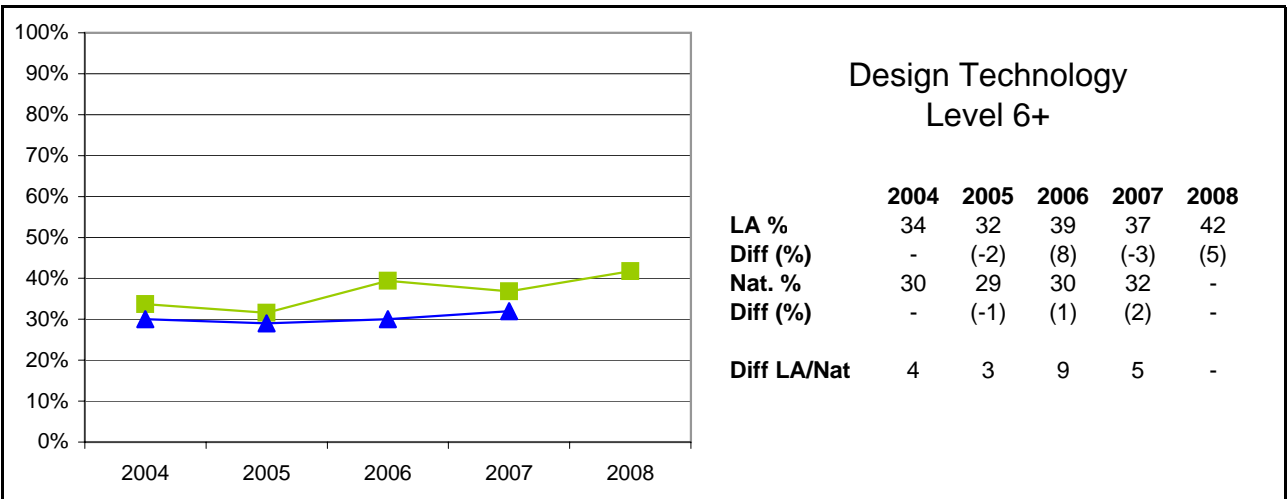
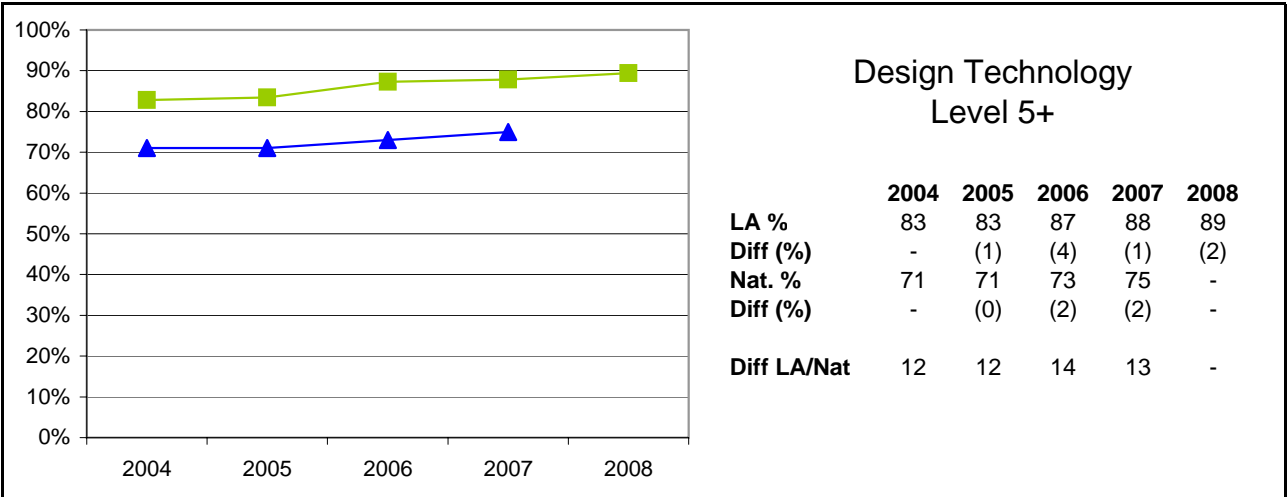
Figures derived from August 2008 DCSF information.

National figures obtained from DCSF information published within SFR 20/2008, National Curriculum Assessments at Key Stage 3 in England, 2008 (Provisional)

LA data for each year relates to all Schools (including Special Schools & the PRU). National data relates to all Schools (including Special Schools) but not PRUs

# Key Stage Three Foundation Subjects 2004 - 2008

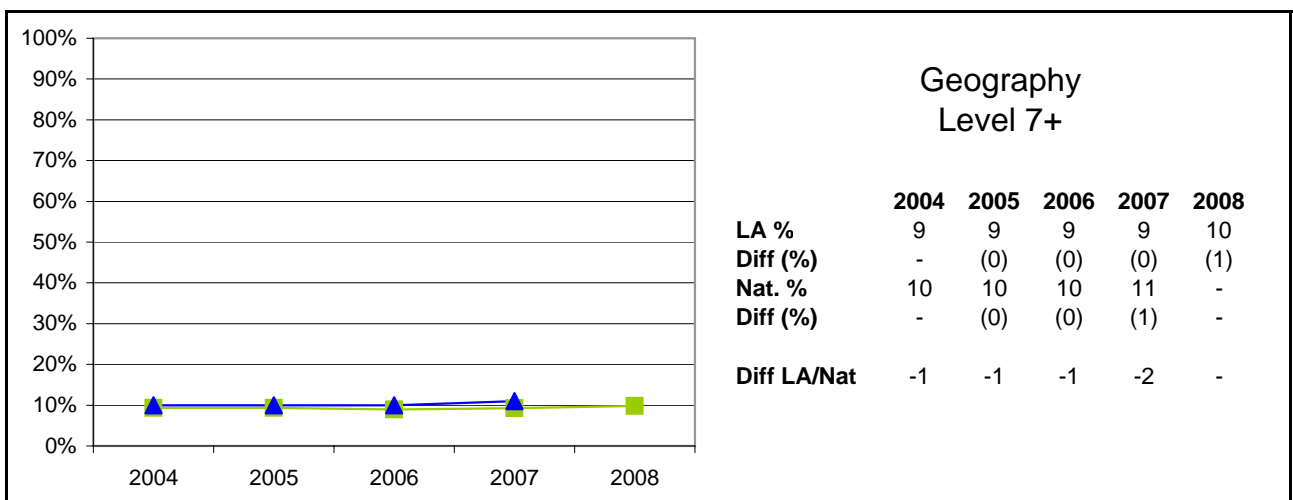
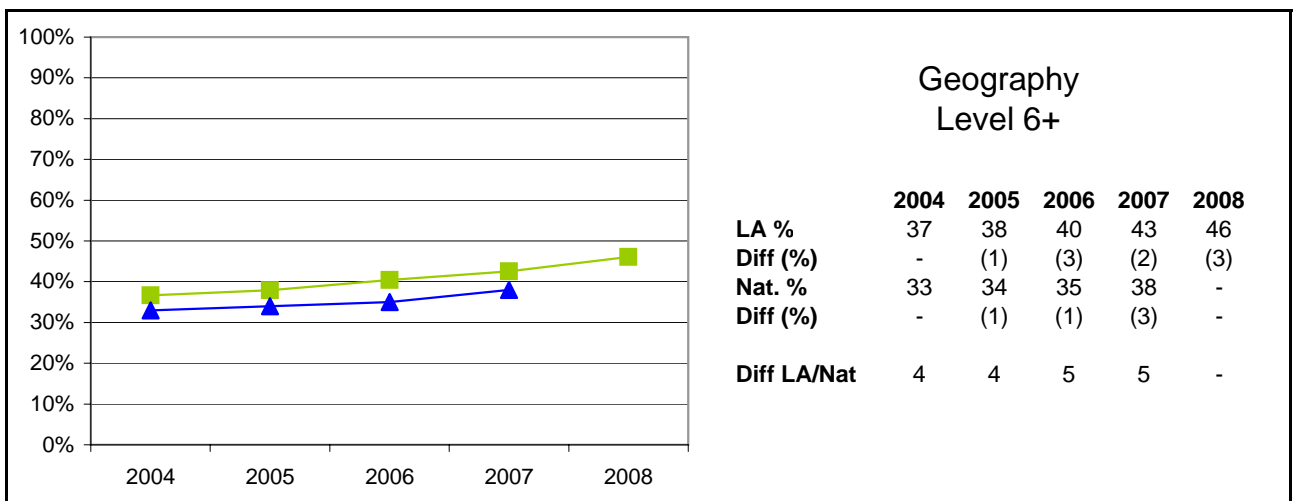
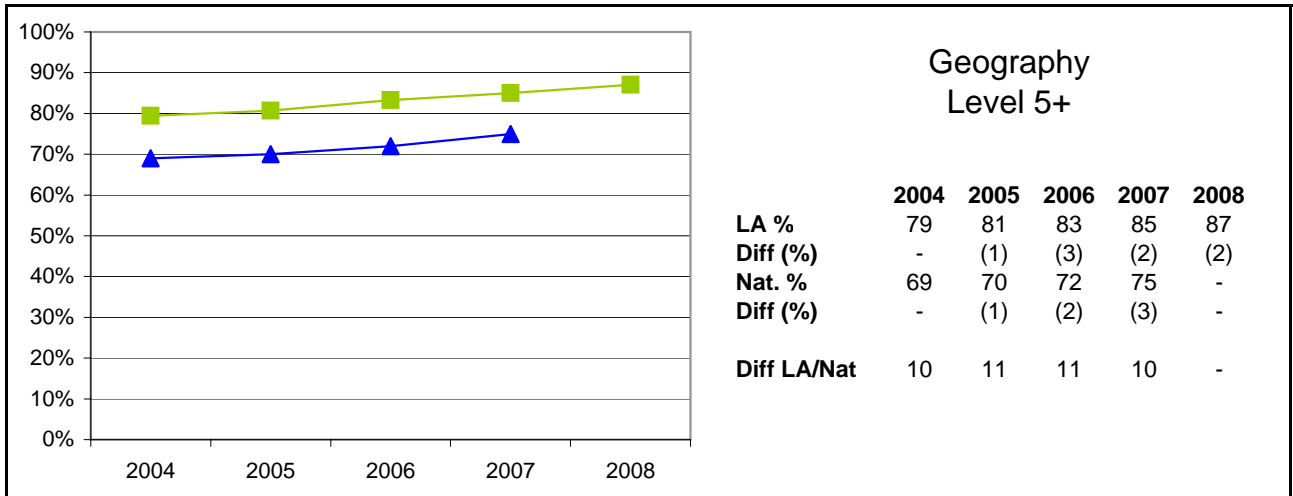
855 Leicestershire



**Notes:**  
 Figures derived from August 2008 DCSF information.  
 National figures obtained from DCSF information published within SFR 20/2008, National Curriculum Assessments at Key Stage 3 in England, 2008 (Provisional)  
 LA data for each year relates to all Schools (including Special Schools & the PRU). National data relates to all Schools (including Special Schools) but not PRUs

# Key Stage Three Foundation Subjects 2004 - 2008

855 Leicestershire



**Notes:**

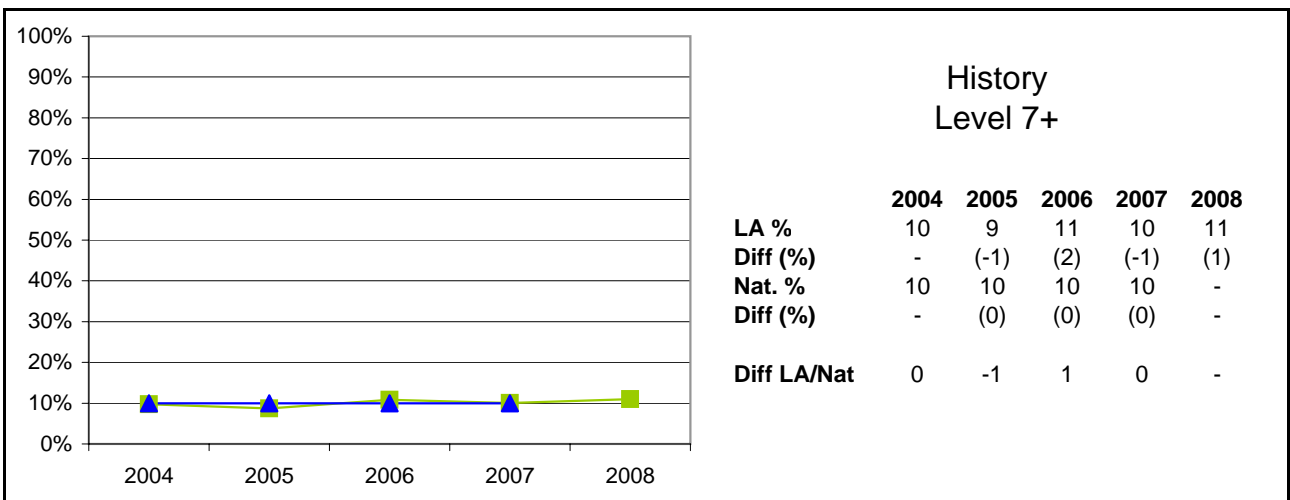
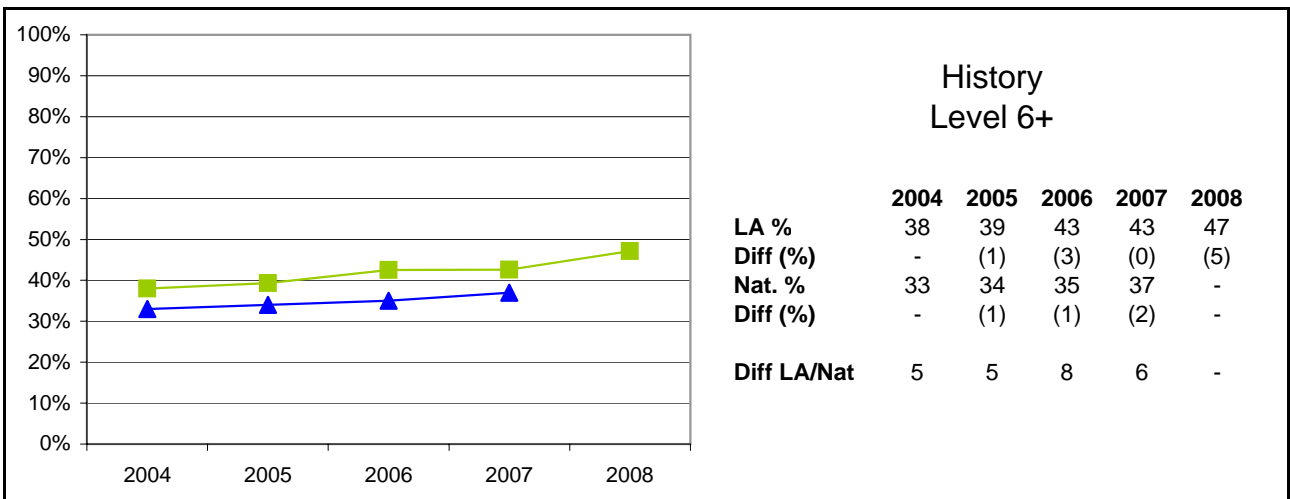
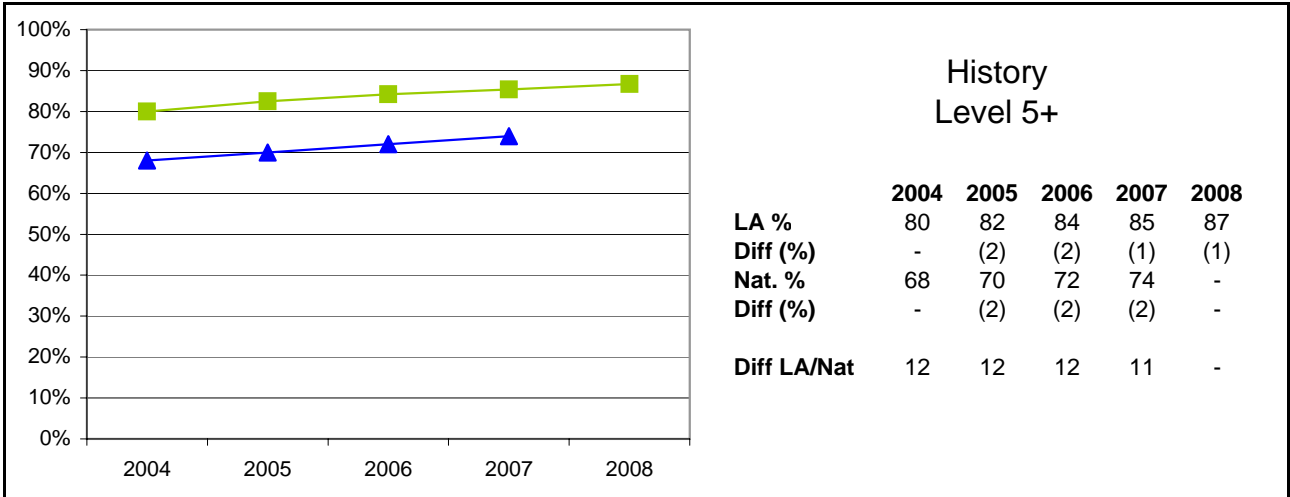
Figures derived from August 2008 DCSF information.

National figures obtained from DCSF information published within SFR 20/2008, National Curriculum Assessments at Key Stage 3 in England, 2008 (Provisional)

LA data for each year relates to all Schools (including Special Schools & the PRU). National data relates to all Schools (including Special Schools) but not PRUs

# Key Stage Three Foundation Subjects 2004 - 2008

855 Leicestershire



**Notes:**

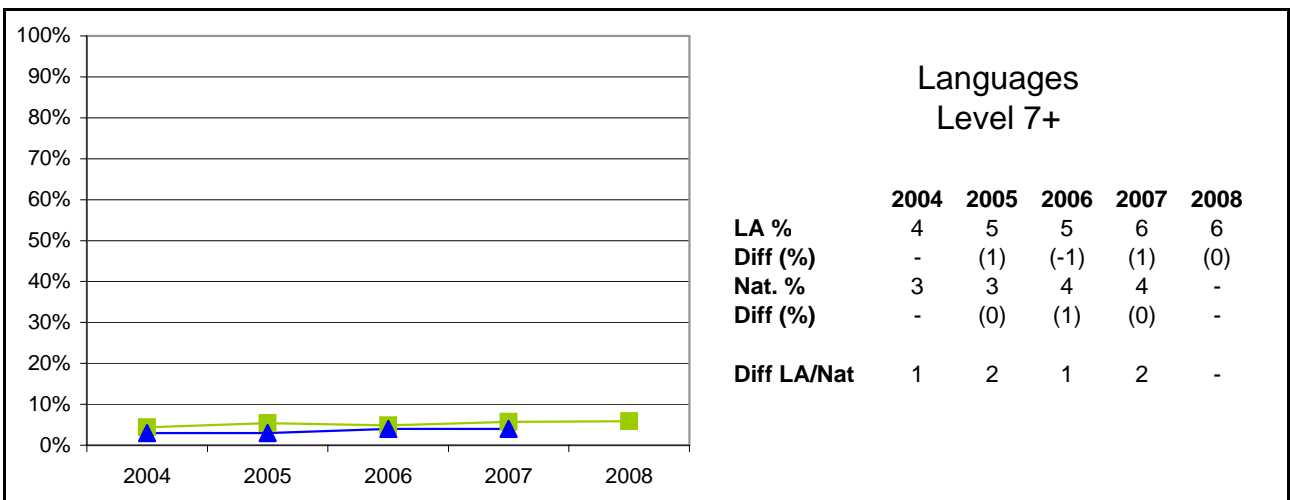
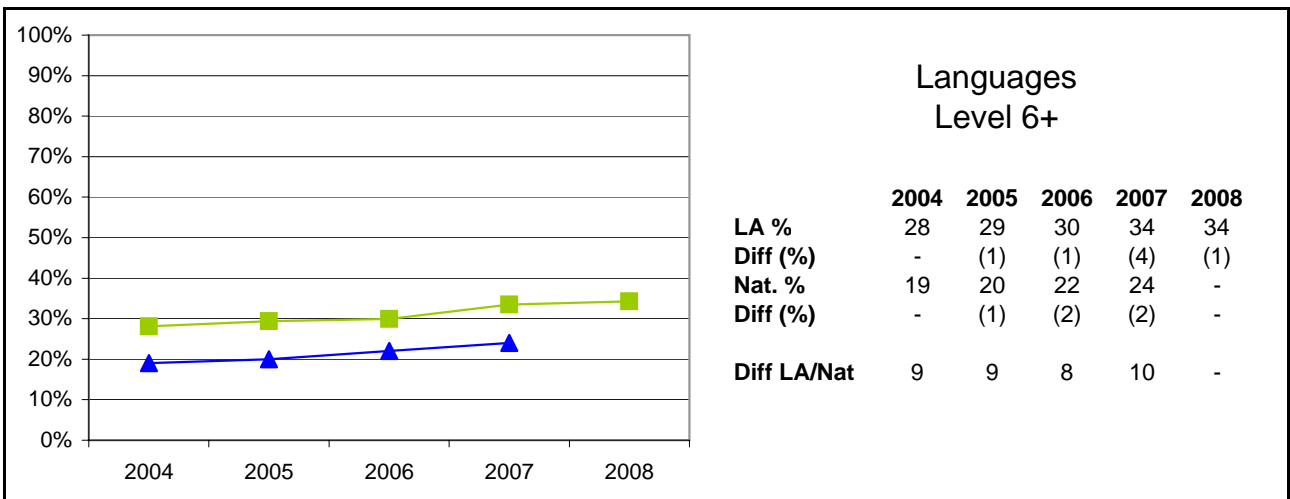
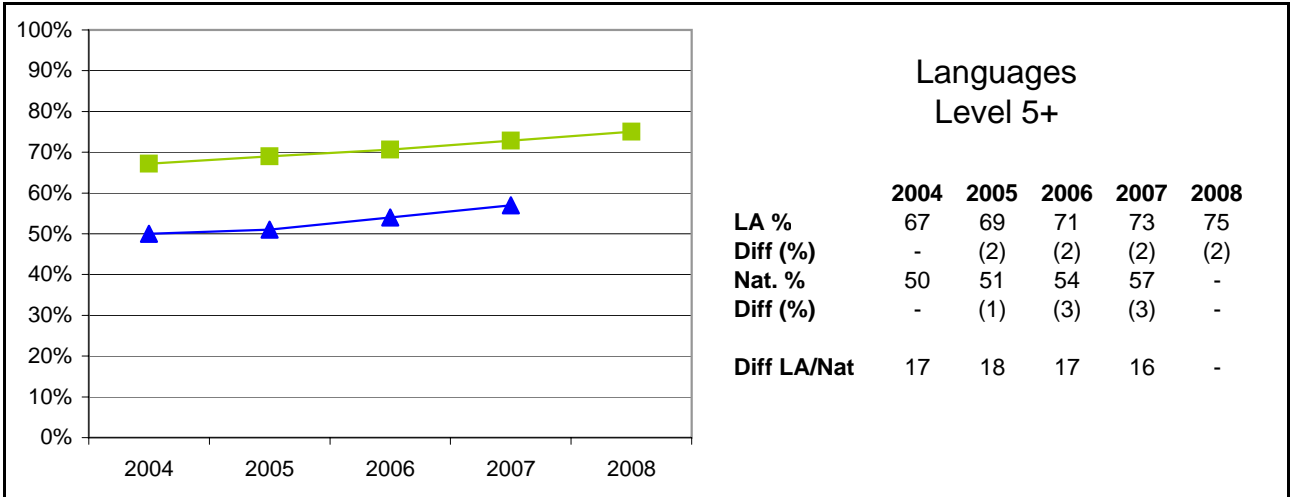
Figures derived from August 2008 DCSF information.

National figures obtained from DCSF information published within SFR 20/2008, National Curriculum Assessments at Key Stage 3 in England, 2008 (Provisional)

LA data for each year relates to all Schools (including Special Schools & the PRU). National data relates to all Schools (including Special Schools) but not PRUs

# Key Stage Three Foundation Subjects 2004 - 2008

855 Leicestershire



**Notes:**

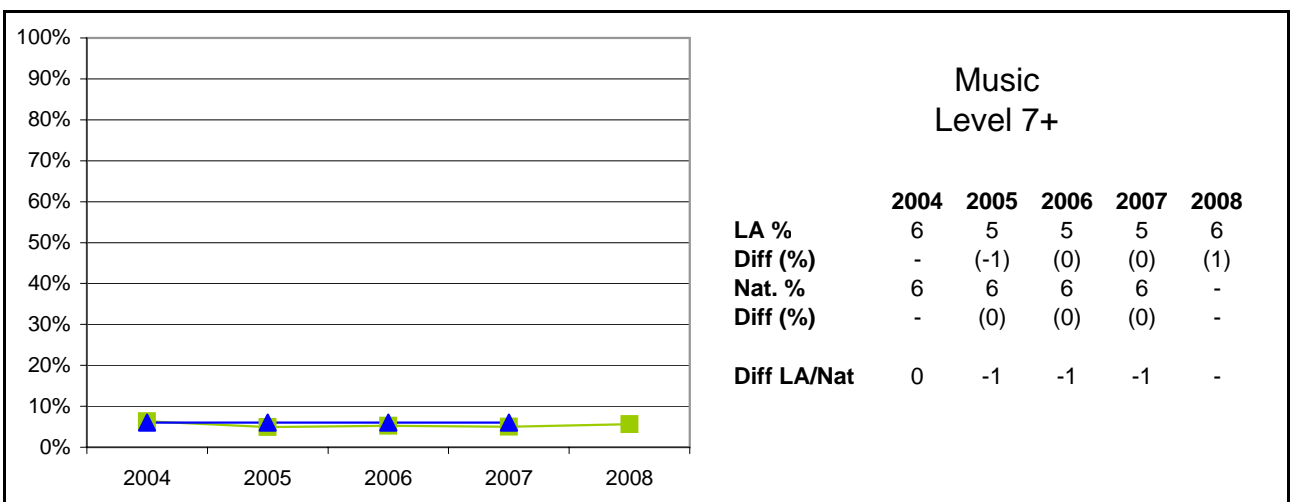
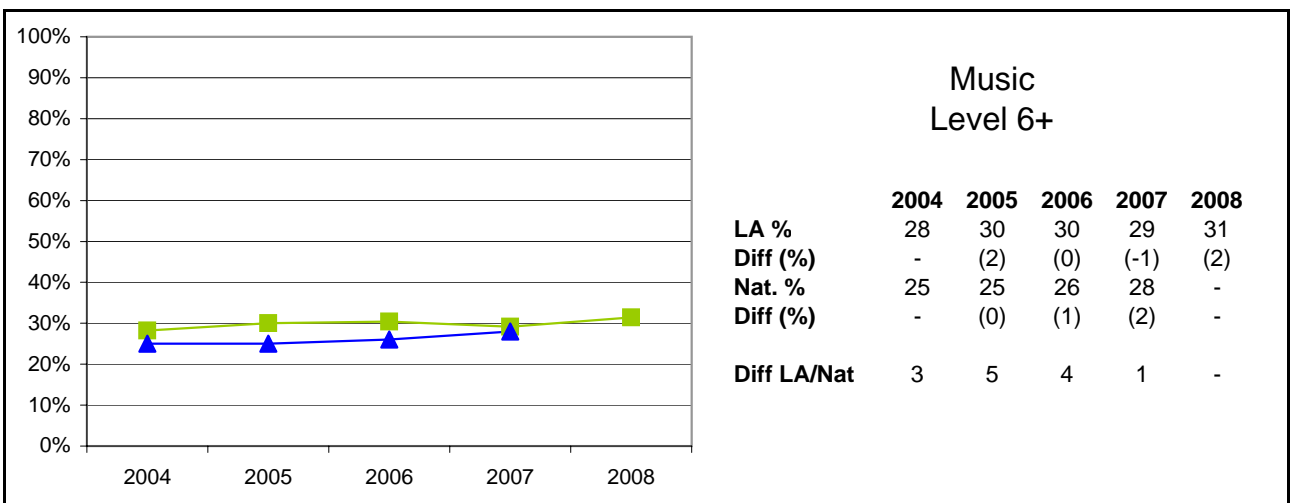
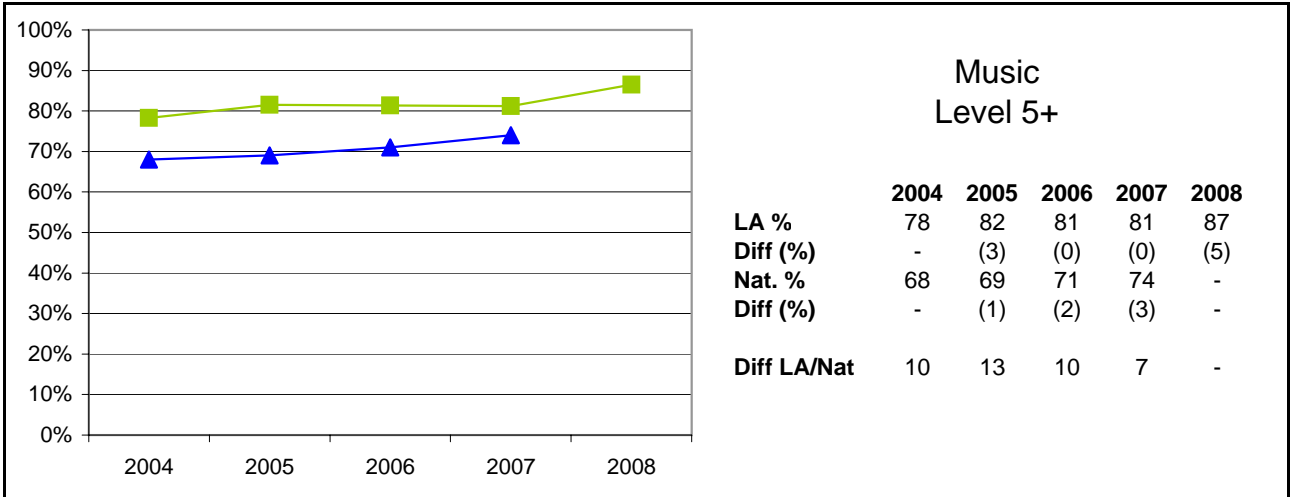
Figures derived from August 2008 DCSF information.

National figures obtained from DCSF information published within SFR 20/2008, National Curriculum Assessments at Key Stage 3 in England, 2008 (Provisional)

LA data for each year relates to all Schools (including Special Schools & the PRU). National data relates to all Schools (including Special Schools) but not PRUs

# Key Stage Three Foundation Subjects 2004 - 2008

855 Leicestershire



**Notes:**

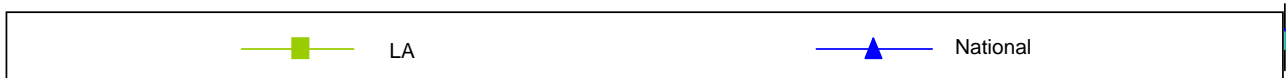
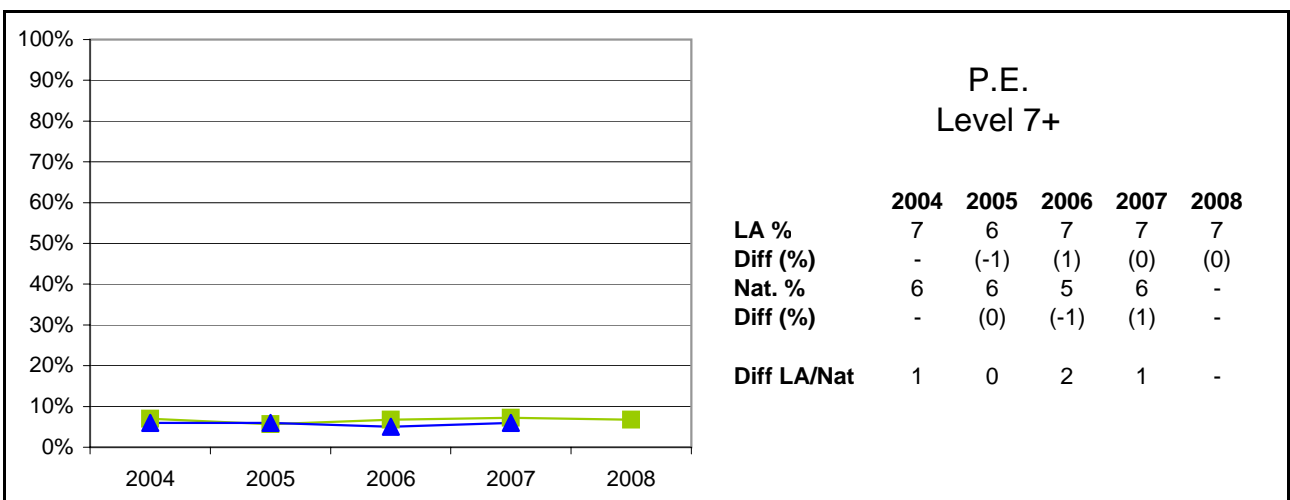
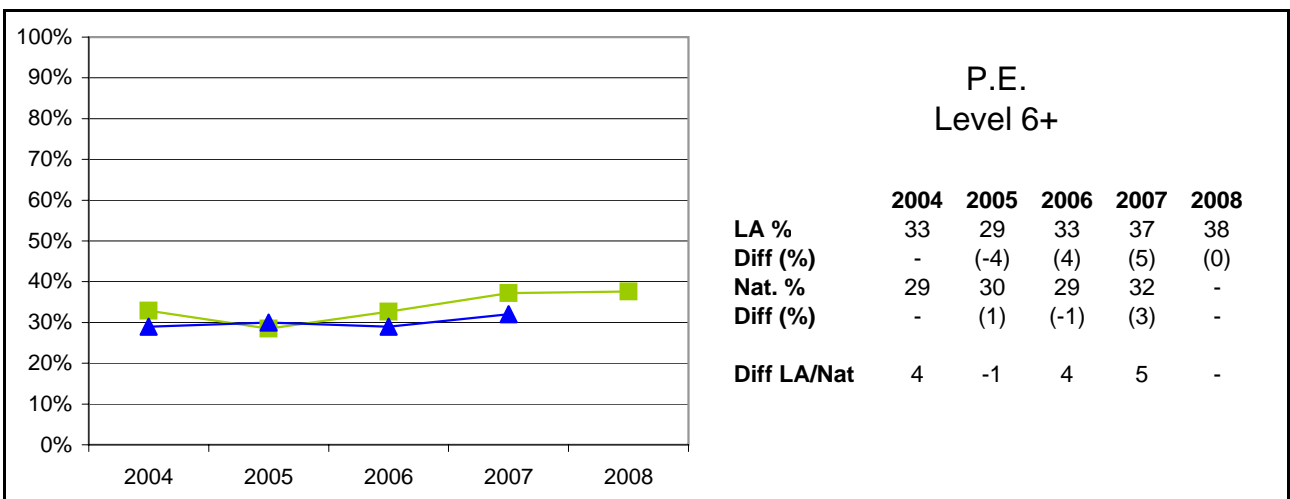
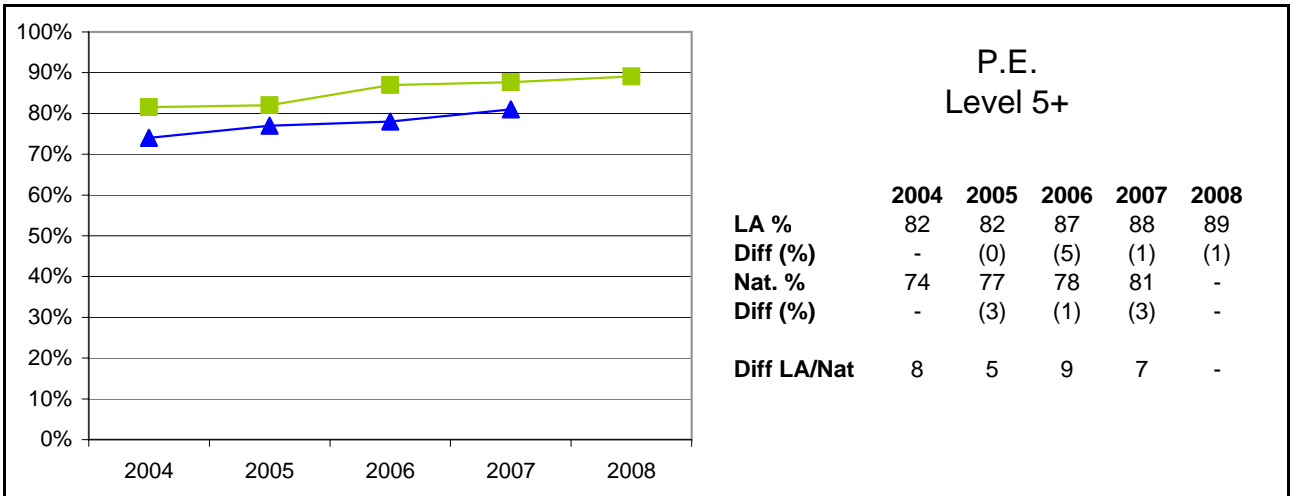
Figures derived from August 2008 DCSF information.

National figures obtained from DCSF information published within SFR 20/2008, National Curriculum Assessments at Key Stage 3 in England, 2008 (Provisional)

LA data for each year relates to all Schools (including Special Schools & the PRU). National data relates to all Schools (including Special Schools) but not PRUs

# Key Stage Three Foundation Subjects 2004 - 2008

855 Leicestershire



**Notes:**

Figures derived from August 2008 DCSF information.

National figures obtained from DCSF information published within SFR 20/2008, National Curriculum Assessments at Key Stage 3 in England, 2008 (Provisional)

LA data for each year relates to all Schools (including Special Schools & the PRU). National data relates to all Schools (including Special Schools) but not PRUs

## Key Stage Three Results 2004 - 2008: Pupil Numbers (Gender & Ethnicity)

855 Leicestershire

Gender	LA				
	2004	2005	2006	2007	2008
Boys	4025	4022	4010	3813	3823
Girls	3867	3949	3707	3649	3664
All	7892	7971	7716	7462	7487

Ethnicity	LA				
	2004	2005	2006	2007	2008
White British	6936	6859	6829	6435	6538
Irish	7	15	19	12	15
Any other White background	110	154	118	100	95
Total White	7053	7029	6966	6547	6648
White and Black Caribbean	46	52	41	62	65
White and Black African	4	7	11	14	9
White and Asian	35	47	38	61	50
Any other Mixed background	35	51	38	47	39
Total Mixed	120	157	128	184	162
Indian	349	386	392	382	406
Pakistani	14	25	13	26	22
Bangladeshi	36	26	31	31	30
Any other Asian background	31	48	32	42	46
Total Asian	430	485	468	481	503
Black Caribbean	17	13	11	8	11
Black African	7	15	3	10	16
Any other Black background	8	1	5	4	2
Total Black	32	29	19	23	29
Chinese	18	20	20	24	16
Any other ethnic group	21	15	19	17	24
Unclassified	219	236	96	186	107
All pupils	7892	7971	7716	7462	7487

**Notes:**

*Data relates to KS3 cohort only*

*Most figures derived from August 2008 DCSF information.*

*LA data for each year relates to all schools (including special schools and the PRU).*

# Key Stage Three Results 2004 - 2008 Gender Analysis: English & Mathematics

855 Leicestershire Average

## English

Boys	LA					National				
	2004	2005	2006	2007	2008	2004	2005	2006	2007	2008
Level										
5+	74%	77%	76%	77%	75%	64%	67%	65%	67%	66%
6+	31%	36%	33%	33%	32%	27%	28%	27%	25%	26%
7+	6%	8%	8%	7%	6%	7%	7%	7%	5%	6%
APS	33.3	33.9	33.7	33.7	33.3	32.3	32.7	32.4	32.3	32.1

Girls	LA					National				
	2004	2005	2006	2007	2008	2004	2005	2006	2007	2008
Level										
5+	86%	89%	89%	87%	87%	78%	81%	80%	80%	80%
6+	47%	52%	50%	46%	47%	41%	42%	42%	39%	41%
7+	13%	14%	14%	13%	12%	13%	12%	13%	10%	11%
APS	35.7	36.2	36.1	35.7	35.6	34.8	35.0	35.1	34.7	34.6


Gender Gap	LA					National				
	2004	2005	2006	2007	2008	2004	2005	2006	2007	2008
Level										
5+	-12%	-12%	-13%	-9%	-12%	-14%	-14%	-15%	-13%	-14%
6+	-17%	-16%	-17%	-13%	-15%	-14%	-14%	-15%	-14%	-15%
7+	-6%	-6%	-6%	-6%	-6%	-6%	-5%	-6%	-5%	-5%
APS	-2.4	-2.3	-2.5	-2.0	-2.3	-2.5	-2.3	-2.7	-2.4	-2.5


## Mathematics

Boys	LA					National				
	2004	2005	2006	2007	2008	2004	2005	2006	2007	2008
Level										
5+	80%	82%	84%	84%	84%	72%	73%	76%	75%	76%
6+	61%	62%	68%	67%	67%	52%	53%	57%	57%	58%
7+	28%	32%	38%	37%	38%	24%	26%	31%	30%	32%
APS	37.0	37.7	38.9	38.6	38.7	35.6	36.1	37.1	36.9	37.1

Girls	LA					National				
	2004	2005	2006	2007	2008	2004	2005	2006	2007	2008
Level										
5+	82%	82%	85%	83%	83%	74%	74%	77%	76%	77%
6+	62%	61%	66%	64%	64%	52%	53%	57%	55%	56%
7+	28%	29%	34%	32%	34%	22%	25%	29%	28%	28%
APS	37.3	37.3	38.5	38.0	38.1	35.7	36.0	37.0	36.7	36.7

Gender Gap	LA					National				
	2004	2005	2006	2007	2008	2004	2005	2006	2007	2008
Level										
5+	-2%	1%	-1%	1%	1%	-2%	-1%	-1%	-1%	-1%
6+	-1%	1%	1%	3%	3%	0%	0%	0%	2%	2%
7+	0%	3%	4%	5%	3%	2%	1%	2%	2%	4%
APS	-0.2	0.5	0.4	0.6	0.6	-0.1	0.1	0.1	0.2	0.4

 Gender gap less than national gender gap

 Gender gap greater than national gender gap

### Notes:

Figures derived from August 2008 DCSF information.

National figures obtained from DCSF information published within SFR 20/2008, National Curriculum Assessments at Key Stage 3 in England, 2008 (Provisional)

LA data for each year relates to all Schools (including Special Schools & the PRU). National data relates to all Schools (including Special Schools) but not PRUs

Gender gap is the difference between boys' attainment compared to girls' attainment

# Key Stage Three Results 2004 - 2008 Gender Analysis: Science & ICT

855 Leicestershire Average

## Science

Boys	LA					National				
	2004	2005	2006	2007	2008	2004	2005	2006	2007	2008
Level	2004	2005	2006	2007	2008	2004	2005	2006	2007	2008
5+	77%	80%	82%	83%	82%	65%	69%	71%	72%	72%
6+	44%	49%	51%	53%	52%	34%	38%	41%	40%	42%
7+	14%	17%	20%	21%	19%	11%	12%	15%	15%	14%
APS	34.9	35.5	36.0	36.3	36.0	33.0	33.7	34.2	34.2	34.3

Girls	LA					National				
	2004	2005	2006	2007	2008	2004	2005	2006	2007	2008
Level	2004	2005	2006	2007	2008	2004	2005	2006	2007	2008
5+	79%	80%	84%	83%	81%	67%	70%	73%	73%	71%
6+	47%	45%	50%	50%	49%	35%	36%	41%	41%	40%
7+	15%	13%	18%	20%	18%	11%	11%	14%	15%	13%
APS	35.3	35.1	36.0	36.0	35.7	33.3	33.6	34.3	34.4	34.1


Gender Gap	LA					National				
	2004	2005	2006	2007	2008	2004	2005	2006	2007	2008
Level	2004	2005	2006	2007	2008	2004	2005	2006	2007	2008
5+	-2%	0%	-2%	0%	1%	-2%	-1%	-2%	-1%	1%
6+	-2%	3%	1%	3%	3%	-1%	2%	0%	-1%	2%
7+	-1%	3%	3%	2%	1%	0%	1%	1%	0%	1%
APS	-0.4	0.5	0.1	0.2	0.3	-0.3	0.1	-0.1	-0.2	0.2


## ICT

Boys	LA					National				
	2004	2005	2006	2007	2008	2004	2005	2006	2007	2008
Level	2004	2005	2006	2007	2008	2004	2005	2006	2007	2008
5+	64%	69%	75%	79%	81%	-	-	-	-	-
6+	15%	16%	18%	22%	26%	-	-	-	-	-
7+	1%	1%	1%	2%	3%	-	-	-	-	-
APS	-	-	-	-	-	-	-	-	-	-

Girls	LA					National				
	2004	2005	2006	2007	2008	2004	2005	2006	2007	2008
Level	2004	2005	2006	2007	2008	2004	2005	2006	2007	2008
5+	77%	77%	84%	86%	88%	-	-	-	-	-
6+	18%	18%	24%	29%	36%	-	-	-	-	-
7+	1%	1%	1%	2%	3%	-	-	-	-	-
APS	-	-	-	-	-	-	-	-	-	-

Gender Gap	LA					National				
	2004	2005	2006	2007	2008	2004	2005	2006	2007	2008
Level	2004	2005	2006	2007	2008	2004	2005	2006	2007	2008
5+	-12%	-8%	-9%	-7%	-7%	-	-	-	-	-
6+	-3%	-2%	-6%	-7%	-10%	-	-	-	-	-
7+	0%	1%	0%	0%	0%	-	-	-	-	-
APS	-	-	-	-	-	-	-	-	-	-

 Gender gap less than national gender gap

 Gender gap greater than national gender gap

### Notes:

Figures derived from August 2008 DCSF information.

National figures obtained from DCSF information published within SFR 20/2008, National Curriculum Assessments at Key Stage 3 in England, 2008 (Provisional)

LA data for each year relates to all Schools (including Special Schools & the PRU). National data relates to all Schools (including Special Schools) but not PRUs

Gender gap is the difference between boys' attainment compared to girls' attainment

# Key Stage Three Results 2004 - 2008 Gender Analysis: Reading & Writing

855 Leicestershire Average

## Reading

Boys	LA					National				
	2004	2005	2006	2007	2008	2004	2005	2006	2007	2008
Level	2004	2005	2006	2007	2008	2004	2005	2006	2007	2008
5+	69%	72%	70%	75%	73%	60%	61%	59%	65%	62%
6+	28%	32%	30%	33%	34%	26%	25%	25%	25%	26%
7+	6%	8%	7%	9%	9%	7%	6%	7%	6%	7%
APS	-	-	-	-	-	-	-	-	-	-

Girls	LA					National				
	2004	2005	2006	2007	2008	2004	2005	2006	2007	2008
Level	2004	2005	2006	2007	2008	2004	2005	2006	2007	2008
5+	80%	84%	85%	86%	84%	71%	76%	74%	78%	76%
6+	42%	50%	48%	46%	50%	38%	40%	40%	39%	41%
7+	13%	16%	15%	15%	18%	14%	12%	14%	12%	14%
APS	-	-	-	-	-	-	-	-	-	-


Gender Gap	LA					National				
	2004	2005	2006	2007	2008	2004	2005	2006	2007	2008
Level	2004	2005	2006	2007	2008	2004	2005	2006	2007	2008
5+	-11%	-13%	-14%	-10%	-10%	-11%	-15%	-15%	-13%	-14%
6+	-13%	-17%	-17%	-13%	-16%	-12%	-15%	-15%	-14%	-15%
7+	-7%	-8%	-8%	-6%	-8%	-7%	-6%	-7%	-6%	-7%
APS	-	-	-	-	-	-	-	-	-	-

## Writing

Boys	LA					National				
	2004	2005	2006	2007	2008	2004	2005	2006	2007	2008
Level	2004	2005	2006	2007	2008	2004	2005	2006	2007	2008
5+	74%	78%	78%	75%	75%	65%	71%	69%	67%	70%
6+	35%	37%	35%	32%	34%	29%	32%	30%	27%	30%
7+	9%	12%	11%	9%	9%	9%	10%	9%	7%	9%
APS	-	-	-	-	-	-	-	-	-	-

Girls	LA					National				
	2004	2005	2006	2007	2008	2004	2005	2006	2007	2008
Level	2004	2005	2006	2007	2008	2004	2005	2006	2007	2008
5+	87%	90%	89%	84%	87%	80%	82%	83%	80%	83%
6+	50%	51%	50%	45%	46%	43%	43%	44%	39%	44%
7+	16%	16%	16%	14%	14%	14%	14%	14%	11%	14%
APS	-	-	-	-	-	-	-	-	-	-

Gender Gap	LA					National				
	2004	2005	2006	2007	2008	2004	2005	2006	2007	2008
Level	2004	2005	2006	2007	2008	2004	2005	2006	2007	2008
5+	-13%	-11%	-12%	-9%	-12%	-15%	-11%	-14%	-13%	-13%
6+	-15%	-14%	-15%	-12%	-12%	-14%	-11%	-14%	-12%	-14%
7+	-7%	-5%	-5%	-5%	-5%	-5%	-4%	-5%	-4%	-5%
APS	-	-	-	-	-	-	-	-	-	-

 Gender gap less than national gender gap

 Gender gap greater than national gender gap

### Notes:

Figures derived from August 2008 DCSF information.

National figures obtained from DCSF information published within SFR 20/2008, National Curriculum Assessments at Key Stage 3 in England, 2008 (Provisional)

LA data for each year relates to all Schools (including Special Schools & the PRU). National data relates to all Schools (including Special Schools) but not PRUs

Gender gap is the difference between boys' attainment compared to girls' attainment

# Key Stage Three Results 2004 - 2008 Ethnicity Analysis: English


855 Leicestershire


## Percentage achieving Level 5+


Ethnicity	LA					National				
	2004	2005	2006	2007	2008	2004	2005	2006	2007	2008
White British	80%	83%	82%	82%	80%	72%	75%	73%	75%	-
Irish	100%	80%	100%	83%	86%	76%	77%	79%	75%	-
Any other White background	78%	81%	82%	78%	76%	69%	70%	70%	65%	-
Total White	80%	83%	82%	82%	80%	72%	74%	73%	75%	-
White and Black Caribbean	78%	75%	73%	85%	70%	77%	68%	69%	71%	-
White and Black African	100%	71%	100%	71%	44%	75%	73%	72%	75%	-
White and Asian	83%	87%	89%	82%	90%	84%	81%	80%	82%	-
Any other Mixed background	86%	78%	89%	83%	81%	80%	77%	75%	78%	-
Total Mixed	83%	80%	85%	83%	77%	72%	74%	73%	76%	-
Indian	89%	88%	89%	90%	89%	80%	83%	82%	83%	-
Pakistani	86%	76%	77%	88%	91%	58%	64%	62%	66%	-
Bangladeshi	72%	69%	71%	87%	77%	62%	67%	66%	69%	-
Any other Asian background	81%	85%	88%	90%	70%	70%	72%	71%	72%	-
Total Asian	87%	86%	87%	90%	87%	68%	72%	71%	73%	-
Black Caribbean	76%	92%	73%	88%	73%	61%	67%	67%	68%	-
Black African	86%	93%	100%	100%	93%	63%	65%	66%	69%	-
Any other Black background	50%	100%	100%	50%	50%	62%	67%	66%	67%	-
Total Black	72%	93%	84%	83%	82%	62%	66%	66%	68%	-
Chinese	89%	80%	85%	96%	79%	80%	81%	80%	82%	-
Any other ethnic group	57%	73%	79%	82%	74%	62%	63%	63%	64%	-
Unclassified	72%	74%	70%	74%	82%	65%	67%	66%	53%	-
All pupils	80%	83%	82%	82%	81%	71%	74%	73%	74%	-


## Differences

Ethnicity	LA vs. National				
	2004	2005	2006	2007	2008
White British	8%	8%	9%	7%	-
Irish	24%	3%	21%	8%	-
Any other White background	9%	11%	12%	13%	-
Total White	8%	9%	9%	7%	-
White and Black Caribbean	1%	7%	4%	14%	-
White and Black African	25%	-2%	28%	-4%	-
White and Asian	-1%	6%	9%	0%	-
Any other Mixed background	6%	1%	14%	5%	-
Total Mixed	11%	6%	12%	7%	-
Indian	9%	5%	7%	7%	-
Pakistani	28%	12%	15%	22%	-
Bangladeshi	10%	2%	5%	18%	-
Any other Asian background	11%	13%	17%	18%	-
Total Asian	19%	14%	16%	17%	-
Black Caribbean	15%	25%	6%	20%	-
Black African	23%	28%	34%	31%	-
Any other Black background	-12%	33%	34%	-17%	-
Total Black	10%	27%	18%	15%	-
Chinese	9%	-1%	5%	14%	-
Any other ethnic group	-5%	10%	16%	18%	-
Unclassified	7%	7%	4%	21%	-
All pupils	9%	9%	9%	8%	-

 Performance greater than the national average for the ethnic group

 Performance less than the national average for the ethnic group

 Attainment greater than the comparator figure

 Attainment less than the comparator figure

### Notes:

Figures derived from the most recent DCSF data sources in all cases.

LA data for each year relates to all Schools (including Special Schools & the PRU). National data relates to all Schools (including Special Schools) but not PRUs

# Key Stage Three Results 2004 - 2008 Ethnicity Analysis: Mathematics


855 Leicestershire


## Percentage achieving Level 5+


Ethnicity	LA					National				
	2004	2005	2006	2007	2008	2004	2005	2006	2007	2008
White British	81%	82%	84%	83%	83%	74%	74%	78%	77%	-
Irish	100%	73%	100%	75%	80%	76%	74%	81%	78%	-
Any other White background	80%	79%	85%	77%	86%	71%	71%	76%	70%	-
Total White	81%	82%	84%	83%	83%	74%	74%	78%	76%	-
White and Black Caribbean	83%	73%	80%	82%	71%	71%	65%	70%	70%	-
White and Black African	100%	86%	100%	71%	50%	65%	70%	73%	73%	-
White and Asian	86%	85%	87%	82%	88%	81%	80%	82%	82%	-
Any other Mixed background	77%	80%	89%	87%	84%	73%	74%	77%	76%	-
Total Mixed	83%	80%	87%	83%	78%	71%	71%	75%	74%	-
Indian	89%	89%	89%	90%	92%	81%	82%	85%	84%	-
Pakistani	86%	84%	77%	92%	82%	59%	61%	66%	65%	-
Bangladeshi	81%	65%	87%	87%	73%	62%	64%	69%	68%	-
Any other Asian background	84%	94%	88%	90%	84%	77%	75%	78%	78%	-
Total Asian	88%	88%	88%	90%	89%	69%	70%	74%	73%	-
Black Caribbean	82%	92%	82%	75%	64%	57%	60%	64%	65%	-
Black African	86%	73%	100%	90%	94%	60%	61%	66%	67%	-
Any other Black background	75%	0%	80%	50%	100%	61%	62%	67%	66%	-
Total Black	81%	79%	84%	74%	83%	59%	61%	65%	66%	-
Chinese	94%	100%	90%	100%	94%	90%	92%	92%	93%	-
Any other ethnic group	71%	80%	79%	88%	92%	68%	67%	71%	70%	-
Unclassified	76%	79%	75%	76%	88%	68%	67%	70%	-	-
All pupils	81%	82%	85%	83%	84%	73%	73%	77%	76%	-


## Differences

Ethnicity	LA vs. National				
	2004	2005	2006	2007	2008
White British	7%	8%	6%	6%	-
Irish	24%	-1%	19%	-3%	-
Any other White background	9%	8%	9%	7%	-
Total White	7%	8%	6%	7%	-
White and Black Caribbean	12%	8%	10%	12%	-
White and Black African	35%	16%	27%	-2%	-
White and Asian	5%	5%	5%	0%	-
Any other Mixed background	4%	6%	12%	11%	-
Total Mixed	12%	9%	12%	9%	-
Indian	8%	7%	4%	6%	-
Pakistani	27%	23%	11%	27%	-
Bangladeshi	19%	1%	18%	19%	-
Any other Asian background	7%	19%	10%	12%	-
Total Asian	19%	18%	14%	17%	-
Black Caribbean	25%	32%	18%	10%	-
Black African	26%	12%	34%	23%	-
Any other Black background	14%	-62%	13%	-16%	-
Total Black	22%	18%	19%	8%	-
Chinese	4%	8%	-2%	7%	-
Any other ethnic group	3%	13%	8%	18%	-
Unclassified	8%	12%	5%	-	-
All pupils	8%	9%	8%	7%	-

 Performance greater than the national average for the ethnic group

 Performance less than the national average for the ethnic group

 Attainment greater than the comparator figure

 Attainment less than the comparator figure

### Notes:

Figures derived from the most recent DCSF data sources in all cases.

LA data for each year relates to all Schools (including Special Schools & the PRU). National data relates to all Schools (including Special Schools) but not PRUs

# Key Stage Three Results 2004 - 2008 Ethnicity Analysis: Science


855 Leicestershire


## Percentage achieving Level 5+


Ethnicity	LA					National				
	2004	2005	2006	2007	2008	2004	2005	2006	2007	2008
White British	78%	80%	83%	83%	81%	68%	71%	74%	74%	-
Irish	100%	73%	95%	67%	87%	70%	71%	78%	76%	-
Any other White background	78%	77%	85%	77%	73%	63%	64%	67%	63%	-
Total White	78%	80%	83%	83%	81%	68%	71%	74%	74%	-
White and Black Caribbean	74%	69%	76%	85%	77%	64%	61%	66%	66%	-
White and Black African	100%	71%	100%	64%	44%	58%	64%	69%	71%	-
White and Asian	86%	83%	84%	85%	84%	75%	76%	77%	79%	-
Any other Mixed background	77%	75%	89%	81%	79%	66%	70%	73%	74%	-
Total Mixed	79%	75%	84%	83%	78%	65%	67%	71%	72%	-
Indian	83%	82%	86%	86%	86%	71%	74%	78%	79%	-
Pakistani	71%	68%	62%	92%	82%	46%	50%	54%	57%	-
Bangladeshi	58%	58%	58%	71%	66%	50%	53%	57%	60%	-
Any other Asian background	81%	94%	88%	86%	74%	65%	65%	67%	71%	-
Total Asian	80%	81%	83%	85%	83%	58%	61%	64%	67%	-
Black Caribbean	59%	85%	73%	88%	64%	48%	54%	58%	61%	-
Black African	71%	67%	100%	90%	88%	49%	52%	56%	61%	-
Any other Black background	63%	100%	100%	50%	50%	51%	55%	60%	60%	-
Total Black	63%	76%	84%	78%	76%	49%	53%	58%	61%	-
Chinese	94%	90%	85%	96%	88%	78%	80%	81%	85%	-
Any other ethnic group	62%	80%	74%	76%	67%	56%	56%	60%	61%	-
Unclassified	67%	75%	76%	73%	85%	60%	63%	65%	79%	-
All pupils	78%	80%	83%	83%	81%	66%	69%	72%	73%	-


## Differences

Ethnicity	LA vs. National				
	2004	2005	2006	2007	2008
White British	10%	9%	9%	9%	-
Irish	30%	2%	17%	-9%	-
Any other White background	15%	13%	18%	14%	-
Total White	10%	9%	9%	9%	-
White and Black Caribbean	10%	8%	10%	19%	-
White and Black African	42%	7%	31%	-7%	-
White and Asian	11%	7%	7%	6%	-
Any other Mixed background	11%	5%	16%	7%	-
Total Mixed	14%	8%	13%	11%	-
Indian	12%	8%	8%	7%	-
Pakistani	25%	18%	8%	35%	-
Bangladeshi	8%	5%	1%	11%	-
Any other Asian background	16%	29%	21%	15%	-
Total Asian	22%	20%	19%	18%	-
Black Caribbean	11%	31%	15%	27%	-
Black African	22%	15%	44%	29%	-
Any other Black background	12%	45%	40%	-10%	-
Total Black	14%	23%	26%	17%	-
Chinese	16%	10%	4%	11%	-
Any other ethnic group	6%	24%	14%	15%	-
Unclassified	7%	12%	11%	-6%	-
All pupils	12%	11%	11%	10%	-

 Performance greater than the national average for the ethnic group

 Performance less than the national average for the ethnic group

 Attainment greater than the comparator figure

 Attainment less than the comparator figure

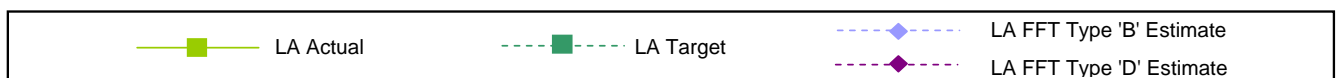
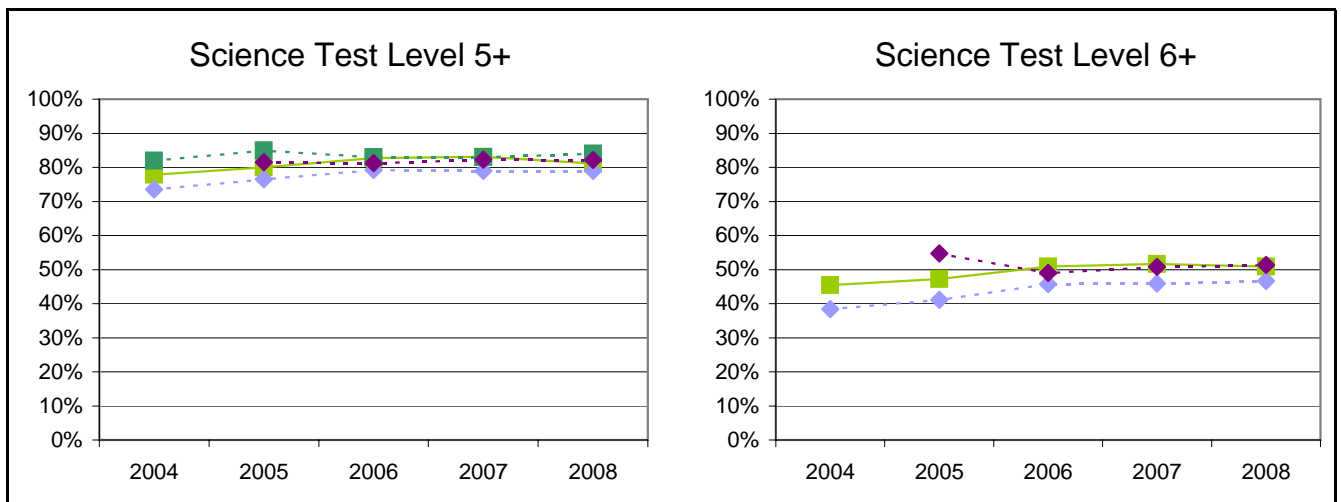
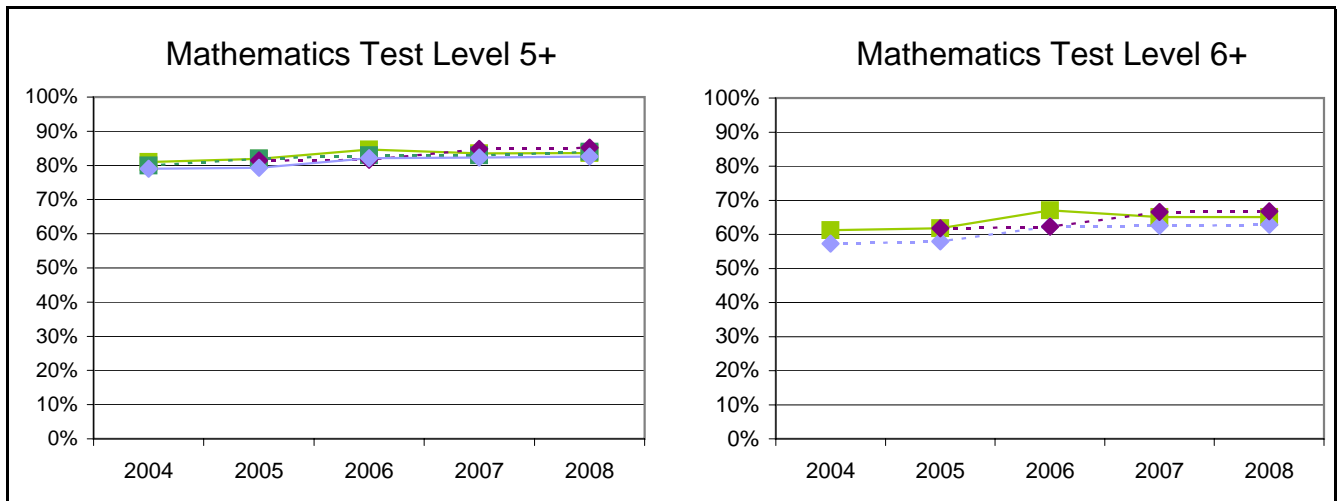
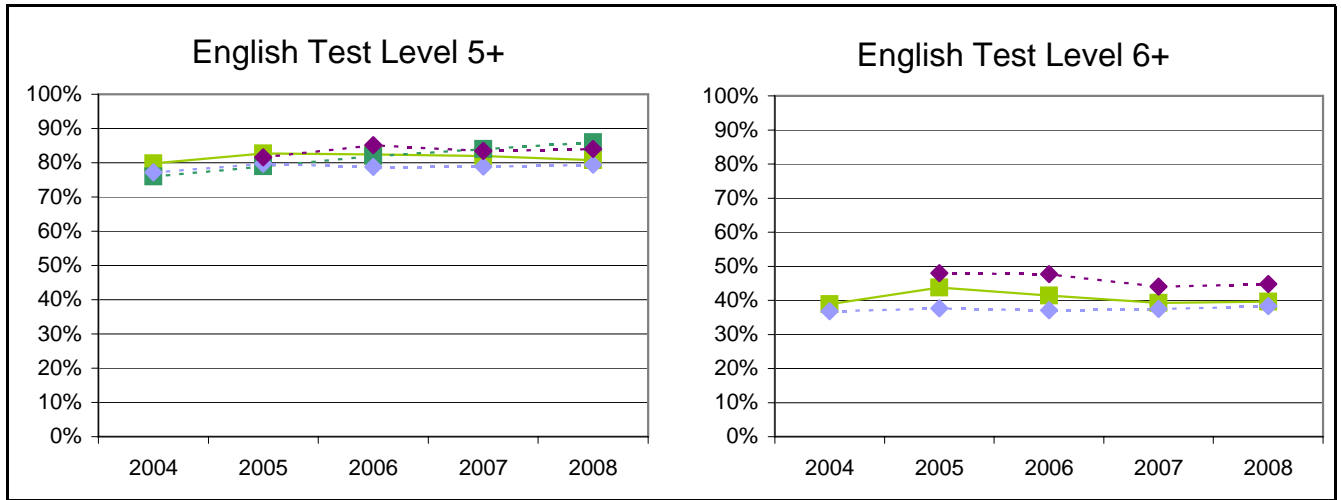
### Notes:

Figures derived from the most recent DCSF data sources in all cases.

LA data for each year relates to all Schools (including Special Schools & the PRU). National data relates to all Schools (including Special Schools) but not PRUs

# Key Stage 3 Results, Targets and FFT Estimates 2004 - 2008 Levels 5+ and 6+ 855 Leicestershire

Graphs display a historical comparison of LA attainment against LA Targets (5+) and FFT Type 'B' & 'D' estimates



**Notes:**  
 LA Targets based on EDP (2001 to 2004) and SaLTS (2005 onwards) submissions.  
 FFT Type 'B' & 'D' data based on estimates as at September 2007.