

**Key Stage  
Three  
School Pack  
2009**

Performance Team,  
Knowledge Management, CYPS  
Richard Gretton: 0116 305 6638  
Jonathan Bailiss: 0116 305 6639

# **KEY STAGE THREE GRAPH PACK**

## **Background**

This report provides an overview of School level, Local Authority and National Key Stage Three attainment data. The purpose of the report is to provide basic attainment comparisons between the Local and National situation and to include further analysis of attainment by gender and ethnicity.

The Key Stage Three Graph Pack includes the following contents:

- Headline data for 2005 to 2009
- Breakdown of 2009 Key Stage Three attainment
- Headline contextual data for the 2009 cohort
- English Test Attainment and Teacher Assessment 5+, 6+ and 7+ 2005 to 2009
- Mathematics Test Attainment and Teacher Assessment 5+, 6+ and 7+ 2005 to 2009
- Science Test Attainment and Teacher Assessment 5+, 6+ and 7+ 2005 to 2009
- ICT Teacher Assessment 5+, 6+ and 7+ 2005 to 2009
- Reading and Writing Test Attainment and Teacher Assessment 5+, 6+ and 7+ 2005 to 2009
- Average Point Scores (APS) for boys, girls and all pupils 2005 to 2009
- Teacher Assessments for all foundation subjects 5+, 6+ and 7+ 2005 to 2009
- Key Stage Three pupil number counts by Ethnicity and Gender 2005 to 2009
- Gender Analysis 5+, 6+ and 7+ with APS 2005 to 2009 for English, Maths, Science, ICT, Reading and Writing
- Ethnicity Analysis 5+ 2005 to 2009 for English, Maths and Science
- FFT Type 'B'/'D' Estimates, Statutory Targets and Actual Attainment comparisons for English, Maths and Science for 5+ and 6+

## **Technical details**

1. For 2009 all reported data is for Teacher Assessments due to the discontinuation of the Key Stage Three Tests. This data was collected directly from schools at the end of the 2008/09 academic year with a coverage rate of 100%. This dataset has been matched against the most recently available Spring School Census to allow for analysis based on ethnicity.
2. To allow for historical comparisons the 2009 Teacher Assessment results are included on both the Test and Teacher Assessment five-year headline reports. Please note however that the Test and Teacher Assessment results are not directly comparable and as such any trends noted in these pooled reports should be used only as a broad guide.
3. All historic National data has been obtained from a variety of DCSF attainment sources.
4. Included in the Graph Pack are sections on gender and ethnicity analysis. For gender analysis purposes we have highlighted where the gender gap is larger than the national average and for ethnicity analysis purposes we have highlighted where headline performance is greater than or less than average national or local performance. No degree of significance is placed on the differences highlighted.
5. Also included in the analysis are FFT (Fischer Family Trust) Key Stage Three Type 'B' and 'D' Estimates for 2005 to 2009 based on Key Stage Two prior attainment (both Test and Teacher Assessment data). FFT Type 'B' estimates are based upon individual pupils' attainment by gender between Key Stage Two and Key Stage Three adjusted to allow for the performance of 'similar' schools. Type 'D' estimates provide an indication of achievement that would be consistent with the progress made by students in schools with the highest value-added (at the top 25% of schools nationally) between Key Stage Two and Key Stage Three.

6. Historic Teacher Assessment (TA) data for Schools, the Local Authority and National data may only be regarded as being partial for a given year because some schools did not submit valid Teacher Assessment data to the NAA (National Assessment Agency) - 2006 is an example of this. This will have impact on the Local Authority and National data to some degree, and the schools concerned will have no TA data reported in this pack for those years. Nationally, for 2007 the Teacher Assessment data is approximately 70% complete, in 2006 it was 75% complete. For Leicestershire, 2006 was 88% complete while 2007 to 2009 were 100% complete as the Local Authority Performance Team collected the data directly from schools and transferred it to the NAA.
7. 2008 comparisons with 2007 are affected by an administrative change to the 2008 tests that include the removal of borderlining i.e. the process of checking test scripts that fall just below level thresholds. *This change has been estimated to reduce the percentage achieving the expected level 5 and above by up to 0.9% in English, 0.2% in Maths and 0.6% in Science. Estimates of reductions at level 6 and above are 1.6% for English, 0.3% for Maths and 0.9% for Science.*

The table below shows the estimated impact of borderlining on test result gains for 2008 when compared to the previous four years.

		2004	2005	2006	2007
Level 5+	English	1.2%	1.3%	1.2%	0.9%
	Maths	0.2%	0.2%	0.2%	0.2%
	Science	0.5%	0.9%	0.8%	0.6%
Level 6+	English	1.2%	1.8%	2.0%	1.6%
	Maths	0.2%	0.4%	0.3%	0.3%
	Science	0.5%	1.0%	1.2%	0.9%

## **Enquiries**

Please contact the following people listed below if you wish to make any comments regarding this report or if you have any queries regarding the analysis.

As this analysis is very much developmental we would welcome any comments so that the product can improve and evolve.

### Report contacts:

<p><b>Jonathan Bailiss</b> Senior Statistics and Information Officer Performance Team, Knowledge Management Children &amp; Young People's Service Leicestershire County Council</p> <p>Tel No: 0116 305 6639 E-Mail: <a href="mailto:jonathan.bailiss@leics.gov.uk">jonathan.bailiss@leics.gov.uk</a></p>	<p><b>Richard Gretton</b> Statistics Manager Performance Team, Knowledge Management Children &amp; Young People's Service Leicestershire County Council</p> <p>Tel No: 0116 305 6638 E-Mail: <a href="mailto:richard.gretton@leics.gov.uk">richard.gretton@leics.gov.uk</a></p>
<p><b>Lynda Smith</b> School Development Adviser – Performance Data School Improvement &amp; Performance Service Children &amp; Young People's Service Leicestershire County Council</p> <p>Tel No: 0116 305 7412 E-Mail: <a href="mailto:lynda.smith@leics.gov.uk">lynda.smith@leics.gov.uk</a></p>	

## Key Stage Three Results 2009: Headline Data

855 Leicestershire

Type	Year	5+				APS	VA	CVA
		English & Maths	English	Maths	Science			
Leicestershire Test	2009	-	-	-	-	-	-	-
National Test	2009	-	-	-	-	-	-	-
Leicestershire TA	2009	81 %	86 %	87 %	87 %	36.9	-	-
National TA	2009	-	-	-	-	-	-	-
Leicestershire Test	2008	77 %	82 %	84 %	82 %	36.4	-	-
National Test	2008	-	73 %	77 %	71 %	34.8	-	-
Leicestershire TA	2008	78 %	83 %	86 %	84 %	36.1	-	-
National TA	2008	-	76 %	79 %	76 %	-	-	-
Leicestershire Test	2007	77 %	82 %	84 %	83 %	36.4	-	101.1
National Test	2007	-	74 %	76 %	73 %	34.9	-	-
Leicestershire TA	2007	78 %	83 %	86 %	84 %	36.1	-	-
National TA	2007	-	74 %	79 %	75 %	-	-	-
Leicestershire Test	2006	78 %	83 %	85 %	83 %	36.5	100.9	-
National Test	2006	-	73 %	77 %	72 %	35.0	-	-
Leicestershire TA	2006	76 %	81 %	85 %	84 %	35.9	-	-
National TA	2006	-	73 %	77 %	73 %	-	-	-
Leicestershire Test	2005	76 %	83 %	82 %	80 %	36.0	100.8	-
National Test	2005	-	74 %	74 %	70 %	34.5	-	-
Leicestershire TA	2005	74 %	79 %	83 %	81 %	35.4	-	-
National TA	2005	-	71 %	75 %	71 %	-	-	-

## Key Stage Three Results 2009: Core Subject Summary

855 Leicestershire

### All Pupils

Subject	Total	Other	1	2	3	4	5	6	7	8	E	5+	6+	7+	APS	
English	TA Pupils	7504	51	23	58	188	756	2824	2860	732	12	0	6428	3604	744	35.3
	TA %	-	1 %	0 %	1 %	3 %	10 %	38 %	38 %	10 %	0 %	0 %	86 %	48 %	10 %	
Maths	TA Pupils	7505	47	18	48	221	690	1486	2214	2069	711	1	6481	4995	2781	38.6
	TA %	-	1 %	0 %	1 %	3 %	9 %	20 %	30 %	28 %	9 %	0 %	86 %	67 %	37 %	
Science	TA Pupils	7502	58	12	11	129	776	2303	2669	1520	24	0	6516	4213	1544	36.6
	TA %	-	1 %	0 %	0 %	2 %	10 %	31 %	36 %	20 %	0 %	0 %	87 %	56 %	21 %	
ICT	TA Pupils	7476	53	34	12	42	777	3825	2460	264	9	0	6558	2733	273	34.5
	TA %	-	1 %	0 %	0 %	1 %	10 %	51 %	33 %	4 %	0 %	0 %	88 %	37 %	4 %	
Reading	TA Pupils	6106	47	20	61	167	688	2223	2148	737	15	0	5123	2900	752	35.2
	TA %	-	1 %	0 %	1 %	3 %	11 %	36 %	35 %	12 %	0 %	0 %	84 %	47 %	12 %	
Writing	TA Pupils	6107	51	21	57	189	751	2372	2149	510	7	0	5038	2666	517	34.6
	TA %	-	1 %	0 %	1 %	3 %	12 %	39 %	35 %	8 %	0 %	0 %	82 %	44 %	8 %	
Overall																36.8

### Boys

Subject	Total	Other	1	2	3	4	5	6	7	8	E	5+	6+	7+	APS	
English	TA Pupils	3903	32	18	40	137	522	1642	1246	263	3	0	3154	1512	266	34.1
	TA %	-	1 %	0 %	1 %	4 %	13 %	42 %	32 %	7 %	0 %	0 %	81 %	39 %	7 %	
Maths	TA Pupils	3904	27	13	28	130	341	750	1112	1074	429	0	3365	2615	1503	38.7
	TA %	-	1 %	0 %	1 %	3 %	9 %	19 %	28 %	28 %	11 %	0 %	86 %	67 %	38 %	
Science	TA Pupils	3903	37	7	7	78	411	1186	1349	818	10	0	3363	2177	828	36.5
	TA %	-	1 %	0 %	0 %	2 %	11 %	30 %	35 %	21 %	0 %	0 %	86 %	56 %	21 %	
ICT	TA Pupils	3886	32	28	8	29	521	2059	1084	116	9	0	3268	1209	125	33.8
	TA %	-	1 %	1 %	0 %	1 %	13 %	53 %	28 %	3 %	0 %	0 %	84 %	31 %	3 %	
Reading	TA Pupils	3212	31	14	43	126	460	1278	985	271	4	0	2538	1260	275	34.1
	TA %	-	1 %	0 %	1 %	4 %	14 %	40 %	31 %	8 %	0 %	0 %	79 %	39 %	9 %	
Writing	TA Pupils	3212	34	16	40	147	516	1334	937	186	2	0	2459	1125	188	33.4
	TA %	-	1 %	0 %	1 %	5 %	16 %	42 %	29 %	6 %	0 %	0 %	77 %	35 %	6 %	
Overall																36.5

### Girls

Subject	Total	Other	1	2	3	4	5	6	7	8	E	5+	6+	7+	APS	
English	TA Pupils	3601	19	5	18	51	234	1182	1614	469	9	0	3274	2092	478	36.5
	TA %	-	1 %	0 %	0 %	1 %	6 %	33 %	45 %	13 %	0 %	0 %	91 %	58 %	13 %	
Maths	TA Pupils	3601	20	5	20	91	349	736	1102	995	282	1	3116	2380	1278	38.5
	TA %	-	1 %	0 %	1 %	3 %	10 %	20 %	31 %	28 %	8 %	0 %	87 %	66 %	35 %	
Science	TA Pupils	3599	21	5	4	51	365	1117	1320	702	14	0	3153	2036	716	36.7
	TA %	-	1 %	0 %	0 %	1 %	10 %	31 %	37 %	20 %	0 %	0 %	88 %	57 %	20 %	
ICT	TA Pupils	3590	21	6	4	13	256	1766	1376	148	0	0	3290	1524	148	35.2
	TA %	-	1 %	0 %	0 %	0 %	7 %	49 %	38 %	4 %	0 %	0 %	92 %	42 %	4 %	
Reading	TA Pupils	2894	16	6	18	41	228	945	1163	466	11	0	2585	1640	477	36.5
	TA %	-	1 %	0 %	1 %	1 %	8 %	33 %	40 %	16 %	0 %	0 %	89 %	57 %	16 %	
Writing	TA Pupils	2895	17	5	17	42	235	1038	1212	324	5	0	2579	1541	329	36.0
	TA %	-	1 %	0 %	1 %	1 %	8 %	36 %	42 %	11 %	0 %	0 %	89 %	53 %	11 %	
Overall																37.2

#### Notes

Data derived from the June 2009 Teacher Assessment collection.

Other refers to pupils who were absent or those working at a level below that assessed by the Teacher Assessments.

# Key Stage Three Results 2009: Foundation Subject Summary

855 Leicestershire

## All Pupils

Subject	Total	Other	1	2	3	4	5	6	7	8	E	5+	6+	7+	APS	
Art	Pupils	7498	71	16	21	30	459	3124	3027	704	44	2	6901	3777	750	36.0
	%	-	1 %	0 %	0 %	0 %	6 %	42 %	40 %	9 %	1 %	0 %	92 %	50 %	10 %	
Design	Pupils	7471	62	10	16	18	508	3304	2944	589	20	0	6857	3553	609	35.7
	%	-	1 %	0 %	0 %	0 %	7 %	44 %	39 %	8 %	0 %	0 %	92 %	48 %	8 %	
Geography	Pupils	7473	66	13	24	63	777	2823	2877	772	57	1	6530	3707	830	35.7
	%	-	1 %	0 %	0 %	1 %	10 %	38 %	38 %	10 %	1 %	0 %	87 %	50 %	11 %	
History	Pupils	7469	67	7	26	67	780	2980	2772	699	70	1	6522	3542	770	35.5
	%	-	1 %	0 %	0 %	1 %	10 %	40 %	37 %	9 %	1 %	0 %	87 %	47 %	10 %	
Languages	Pupils	7207	86	9	80	365	1052	2772	2252	565	24	2	5615	2843	591	34.1
	%	-	1 %	0 %	1 %	5 %	15 %	38 %	31 %	8 %	0 %	0 %	78 %	39 %	8 %	
Music	Pupils	7288	69	22	17	37	786	3877	2033	400	46	1	6357	2480	447	34.5
	%	-	1 %	0 %	0 %	1 %	11 %	53 %	28 %	5 %	1 %	0 %	87 %	34 %	6 %	
P.E.	Pupils	7496	70	19	15	27	446	3596	2737	553	33	0	6919	3323	586	35.5
	%	-	1 %	0 %	0 %	0 %	6 %	48 %	37 %	7 %	0 %	0 %	92 %	44 %	8 %	
R.E.	Pupils	5737	14	1	2	50	691	2474	2030	462	12	1	4979	2505	475	35.3
	%	-	0 %	0 %	0 %	1 %	12 %	43 %	35 %	8 %	0 %	0 %	87 %	44 %	8 %	

## Boys

Subject	Total	Other	1	2	3	4	5	6	7	8	E	5+	6+	7+	APS	
Art	Pupils	3901	45	9	17	26	368	2027	1244	158	7	0	3436	1409	165	34.4
	%	-	1 %	0 %	0 %	1 %	9 %	52 %	32 %	4 %	0 %	0 %	88 %	36 %	4 %	
Design	Pupils	3882	39	4	14	12	392	2054	1204	156	7	0	3421	1367	163	34.4
	%	-	1 %	0 %	0 %	0 %	10 %	53 %	31 %	4 %	0 %	0 %	88 %	35 %	4 %	
Geography	Pupils	3884	37	8	17	47	522	1615	1319	299	19	1	3253	1638	319	34.8
	%	-	1 %	0 %	0 %	1 %	13 %	42 %	34 %	8 %	0 %	0 %	84 %	42 %	8 %	
History	Pupils	3883	40	5	19	45	541	1690	1262	263	18	0	3233	1543	281	34.6
	%	-	1 %	0 %	0 %	1 %	14 %	44 %	33 %	7 %	0 %	0 %	83 %	40 %	7 %	
Languages	Pupils	3711	58	8	61	275	661	1492	955	188	12	1	2648	1156	201	32.8
	%	-	2 %	0 %	2 %	7 %	18 %	40 %	26 %	5 %	0 %	0 %	71 %	31 %	5 %	
Music	Pupils	3783	44	13	15	28	562	2080	871	150	20	0	3121	1041	170	33.6
	%	-	1 %	0 %	0 %	1 %	15 %	55 %	23 %	4 %	1 %	0 %	83 %	28 %	4 %	
P.E.	Pupils	3899	42	13	12	15	210	1631	1569	385	22	0	3607	1976	407	36.0
	%	-	1 %	0 %	0 %	0 %	5 %	42 %	40 %	10 %	1 %	0 %	93 %	51 %	10 %	
R.E.	Pupils	2972	9	1	2	42	461	1419	859	175	3	1	2457	1038	179	34.4
	%	-	0 %	0 %	0 %	1 %	16 %	48 %	29 %	6 %	0 %	0 %	83 %	35 %	6 %	

## Girls

Subject	Total	Other	1	2	3	4	5	6	7	8	E	5+	6+	7+	APS	
Art	Pupils	3597	26	7	4	4	91	1097	1783	546	37	2	3465	2368	585	37.7
	%	-	1 %	0 %	0 %	0 %	3 %	30 %	50 %	15 %	1 %	0 %	96 %	66 %	16 %	
Design	Pupils	3589	23	6	2	6	116	1250	1740	433	13	0	3436	2186	446	37.1
	%	-	1 %	0 %	0 %	0 %	3 %	35 %	48 %	12 %	0 %	0 %	96 %	61 %	12 %	
Geography	Pupils	3589	29	5	7	16	255	1208	1558	473	38	0	3277	2069	511	36.7
	%	-	1 %	0 %	0 %	0 %	7 %	34 %	43 %	13 %	1 %	0 %	91 %	58 %	14 %	
History	Pupils	3586	27	2	7	22	239	1290	1510	436	52	1	3289	1999	489	36.6
	%	-	1 %	0 %	0 %	1 %	7 %	36 %	42 %	12 %	1 %	0 %	92 %	56 %	14 %	
Languages	Pupils	3496	28	1	19	90	391	1280	1297	377	12	1	2967	1687	390	35.5
	%	-	1 %	0 %	1 %	3 %	11 %	37 %	37 %	11 %	0 %	0 %	85 %	48 %	11 %	
Music	Pupils	3505	25	9	2	9	224	1797	1162	250	26	1	3236	1439	277	35.4
	%	-	1 %	0 %	0 %	0 %	6 %	51 %	33 %	7 %	1 %	0 %	92 %	41 %	8 %	
P.E.	Pupils	3597	28	6	3	12	236	1965	1168	168	11	0	3312	1347	179	35.0
	%	-	1 %	0 %	0 %	0 %	7 %	55 %	32 %	5 %	0 %	0 %	92 %	37 %	5 %	
R.E.	Pupils	2765	5	0	0	8	230	1055	1171	287	9	0	2522	1467	296	36.3
	%	-	0 %	0 %	0 %	0 %	8 %	38 %	42 %	10 %	0 %	0 %	91 %	53 %	11 %	

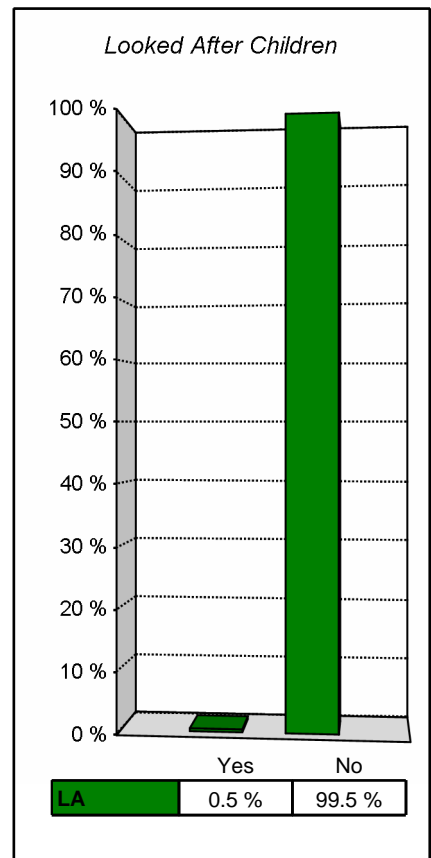
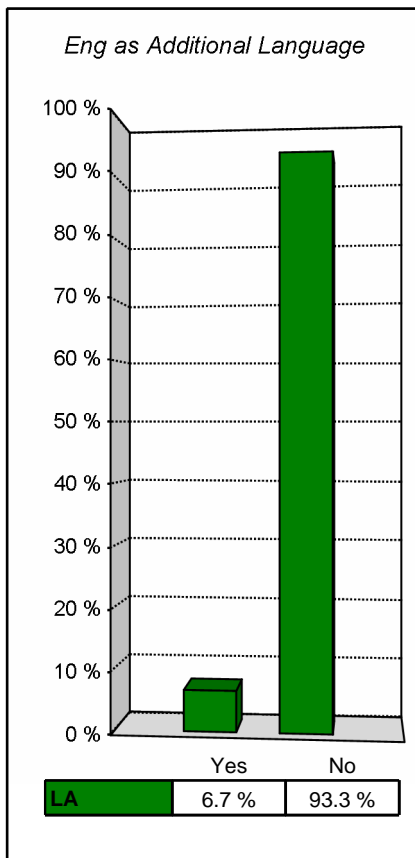
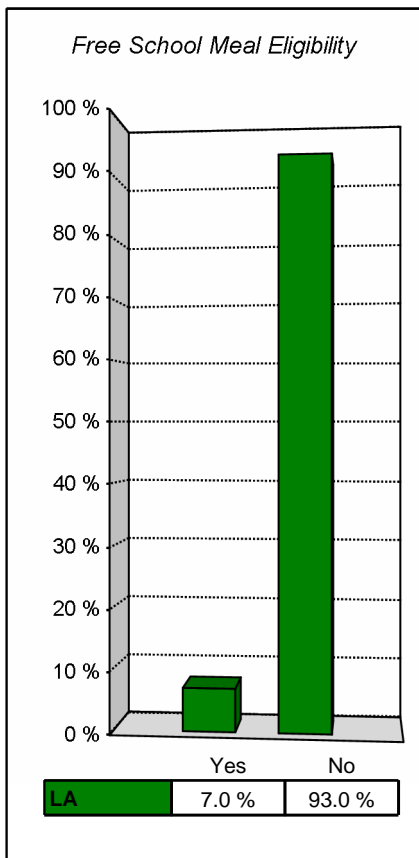
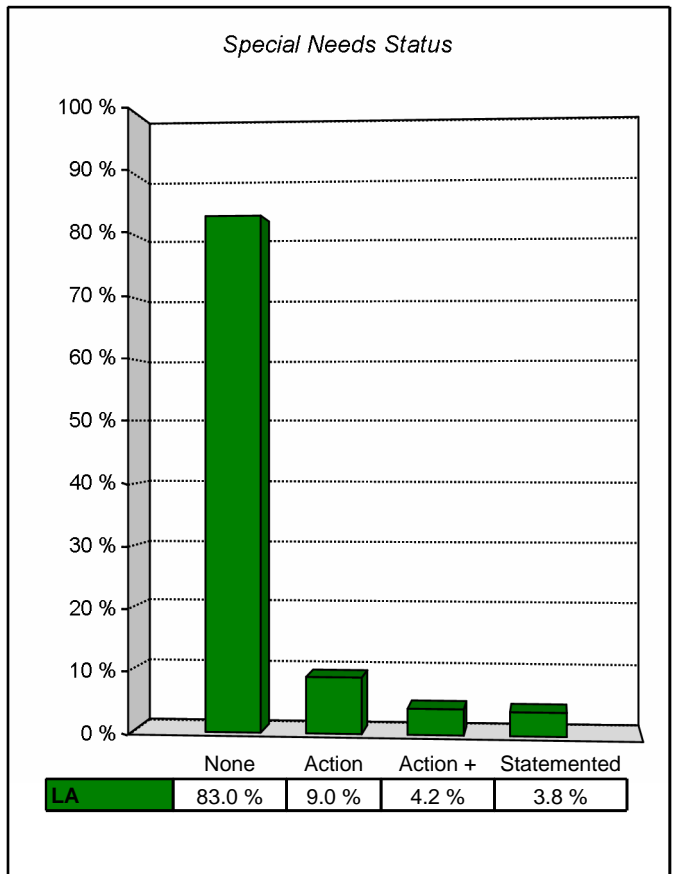
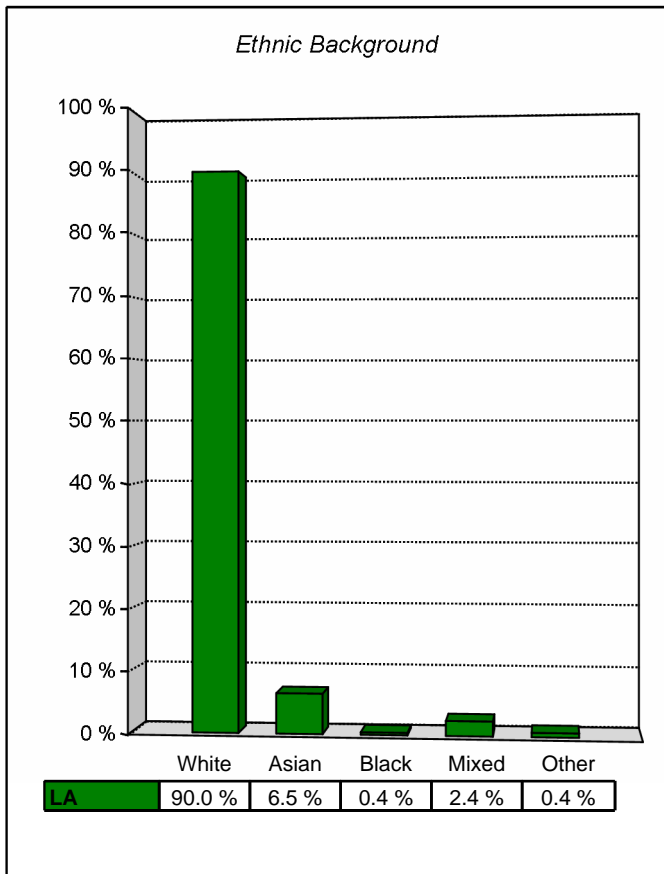
### Notes

Data derived from the June 2009 Teacher Assessment collection.

Other refers to pupils who were absent or those working at a level below that assessed by the Teacher Assessments.

# Key Stage Three Results 2009: Contextual Data

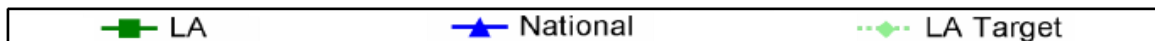
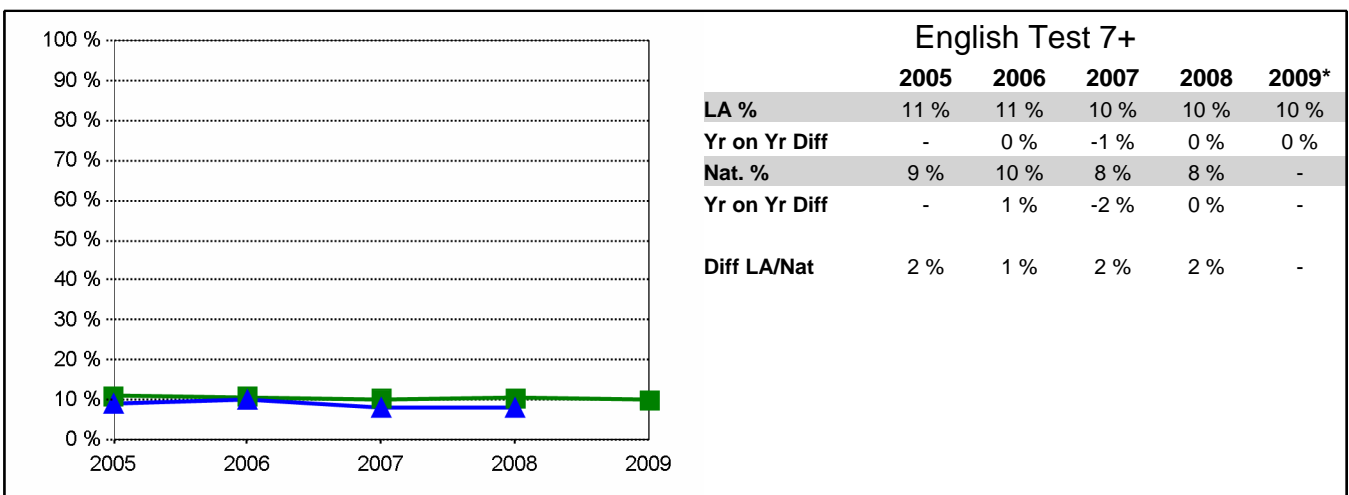
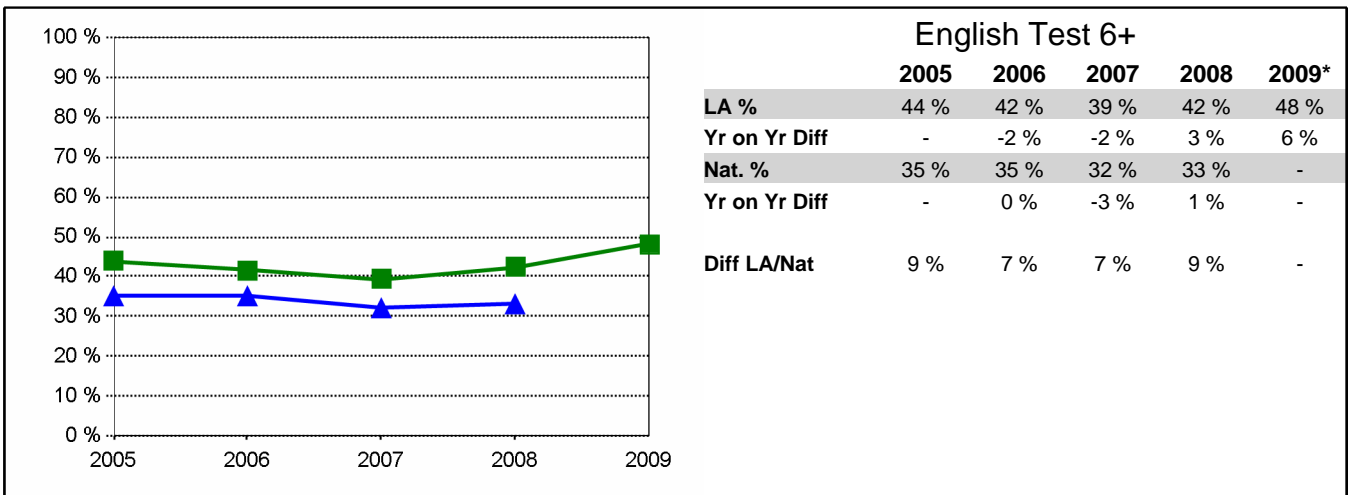
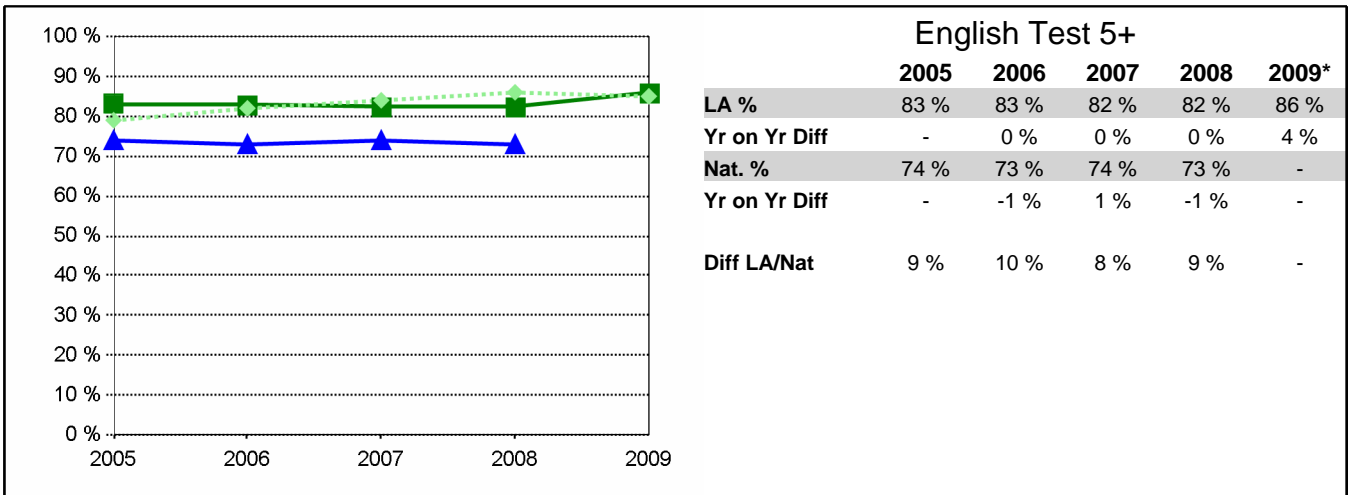
855 Leicestershire



Note:  
 The Contextual data relates to the Key Stage Three Cohort only.  
 Ethnic Background does not include Refused and Information Not Obtained Classified pupils  
 Individual percentages rounded up or down.

# Key Stage Three Results 2005 - 2009

855 Leicestershire



\* 2009 results reflect Teacher Assessments

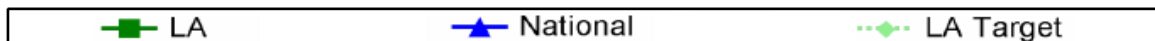
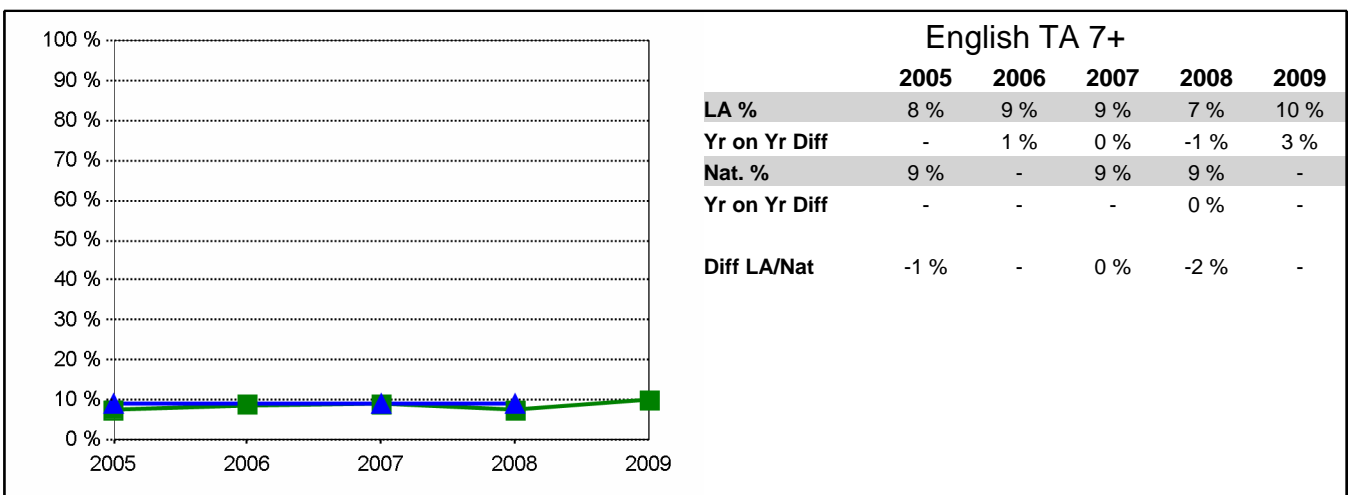
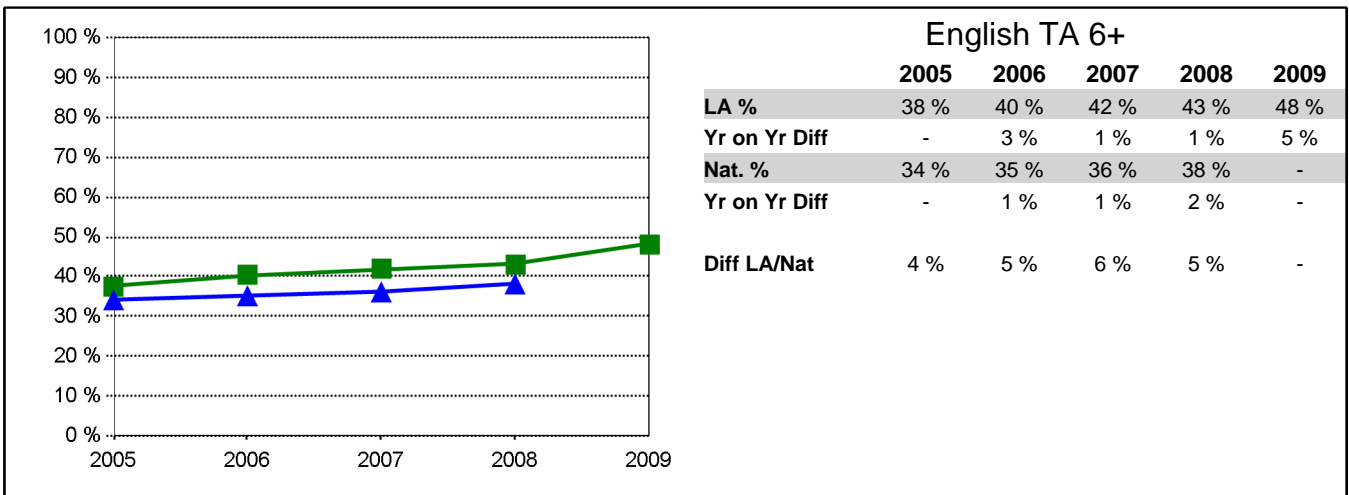
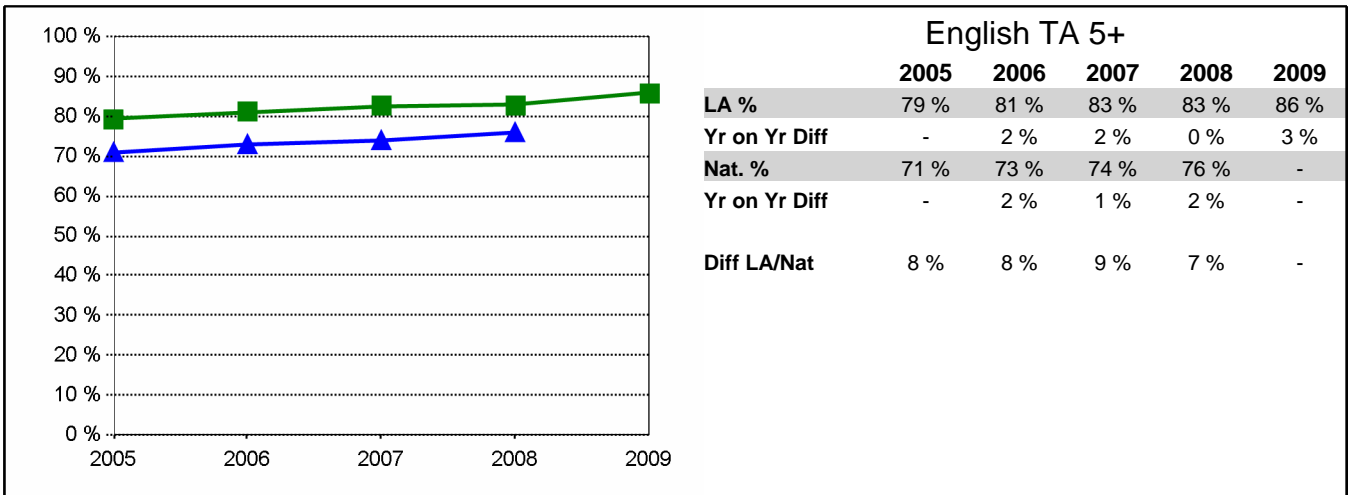
2009 Local Authority figures derived from the June 2009 Teacher Assessment collection. Historic Local Authority figures derived from DCSF data feeds.

Historic National Figures have been obtained from the DCSF Statistical First Release Tables.

Notes: Local Authority data for each year relates to all schools (including special schools). National data is based on all Maintained and Independent Schools.

# Key Stage Three Results 2005 - 2009

855 Leicestershire



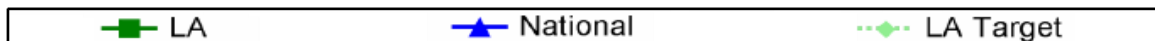
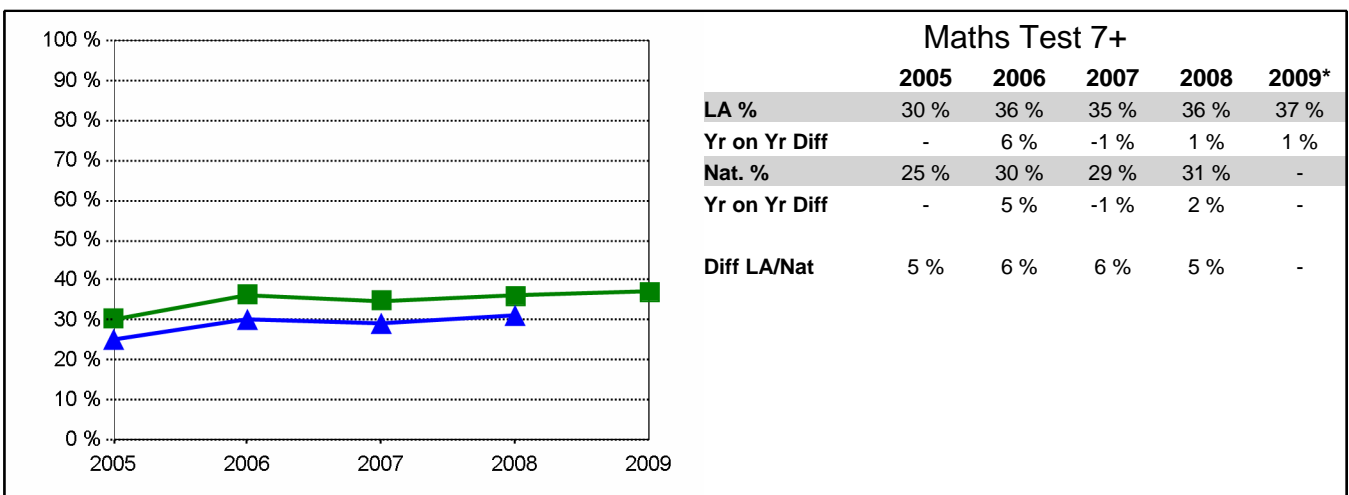
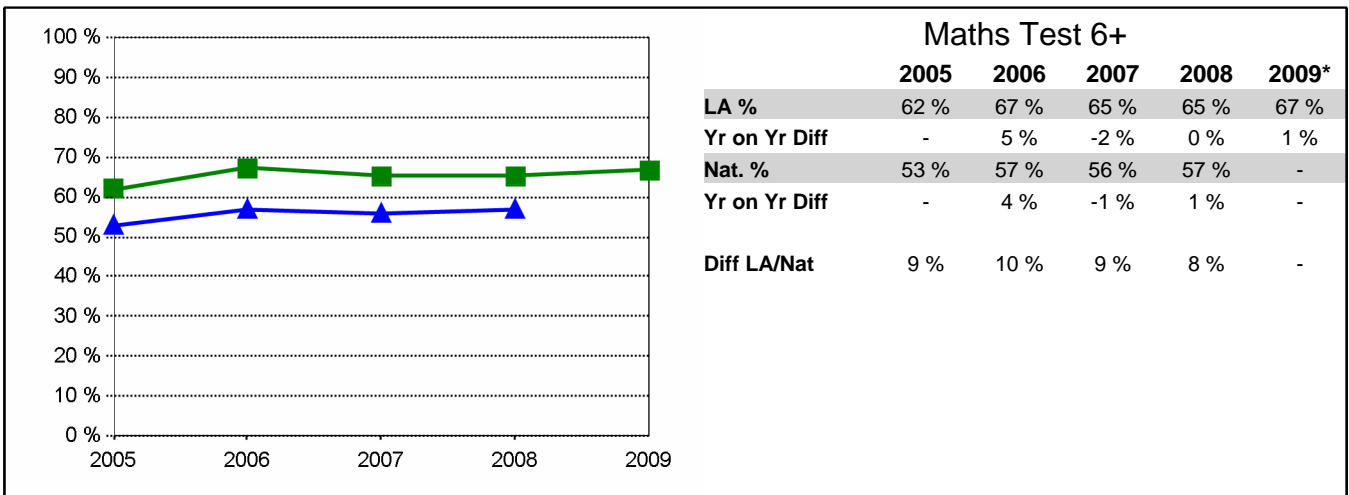
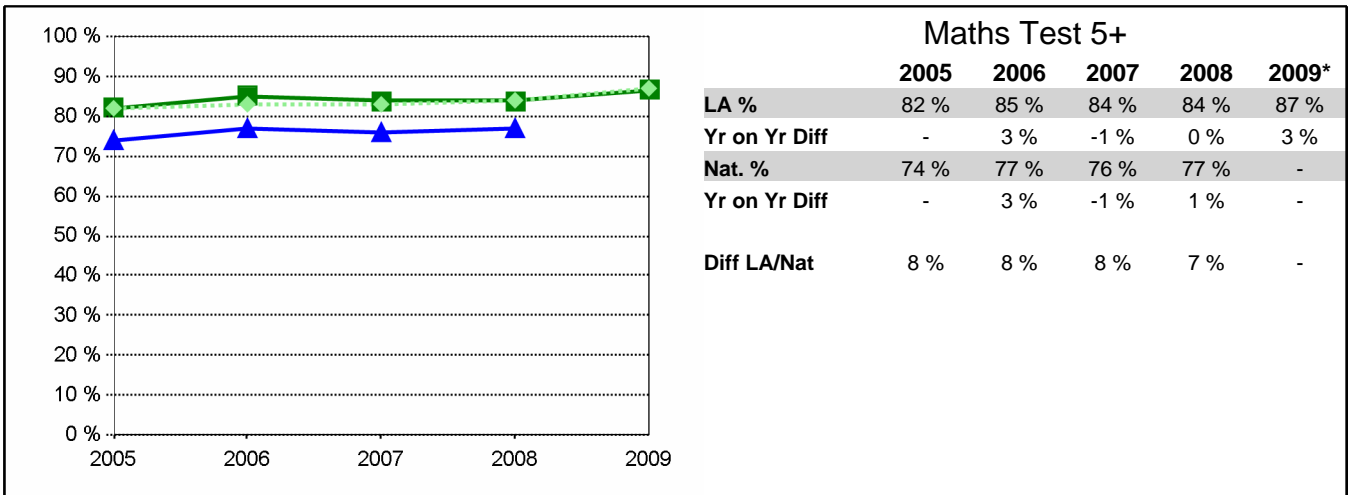
2009 Local Authority figures derived from the June 2009 Teacher Assessment collection. Historic Local Authority figures derived from DCSF data feeds.

Historic National Figures have been obtained from the DCSF Statistical First Release Tables.

Notes: Local Authority data for each year relates to all schools (including special schools). National data is based on all Maintained and Independent Schools.

# Key Stage Three Results 2005 - 2009

855 Leicestershire



\* 2009 results reflect Teacher Assessments

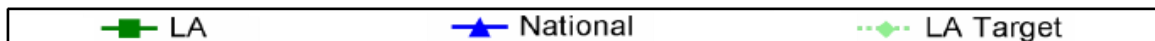
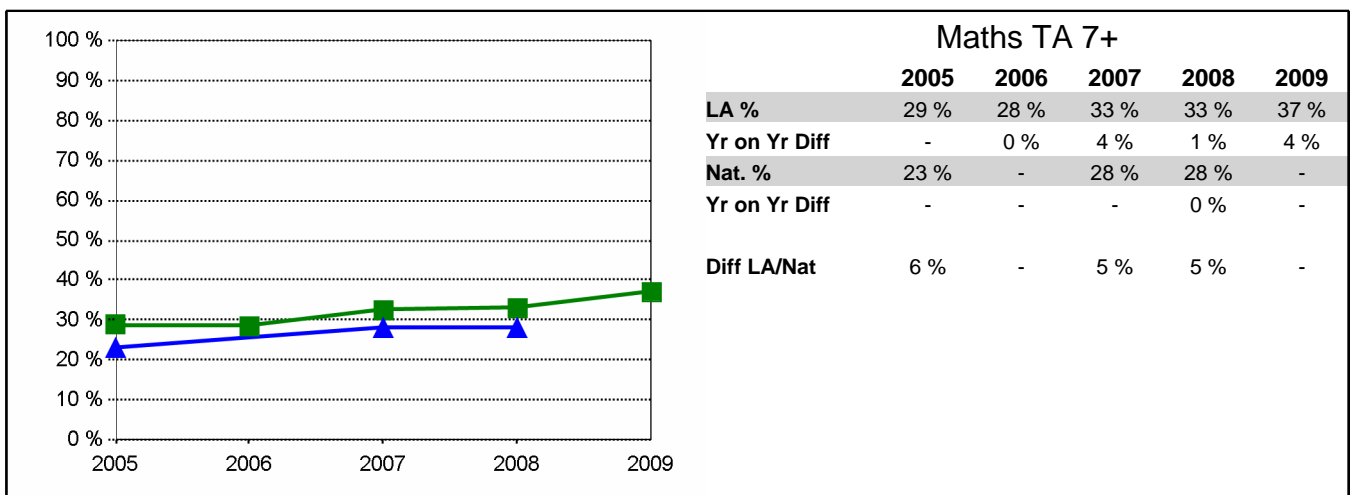
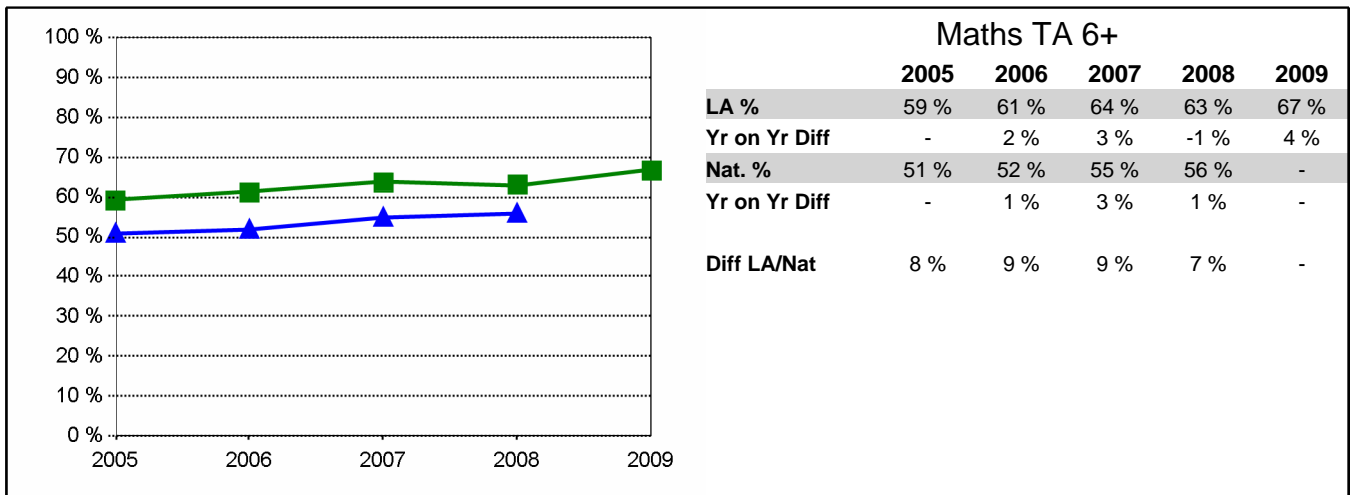
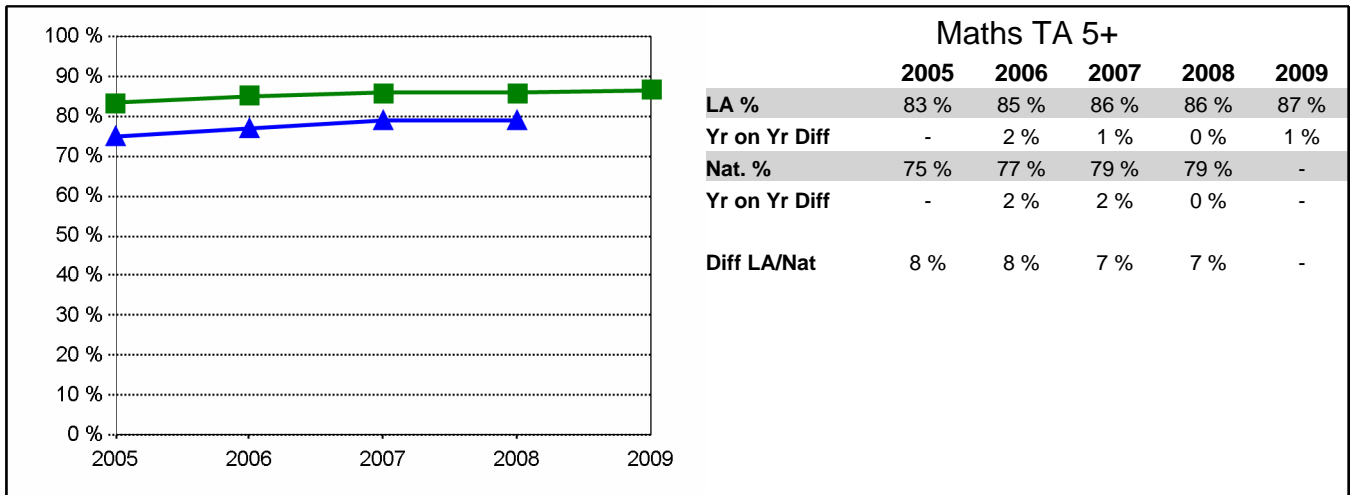
2009 Local Authority figures derived from the June 2009 Teacher Assessment collection. Historic Local Authority figures derived from DCSF data feeds.

Historic National Figures have been obtained from the DCSF Statistical First Release Tables.

Notes: Local Authority data for each year relates to all schools (including special schools). National data is based on all Maintained and Independent Schools.

# Key Stage Three Results 2005 - 2009

855 Leicestershire



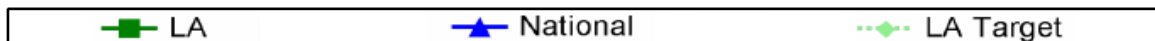
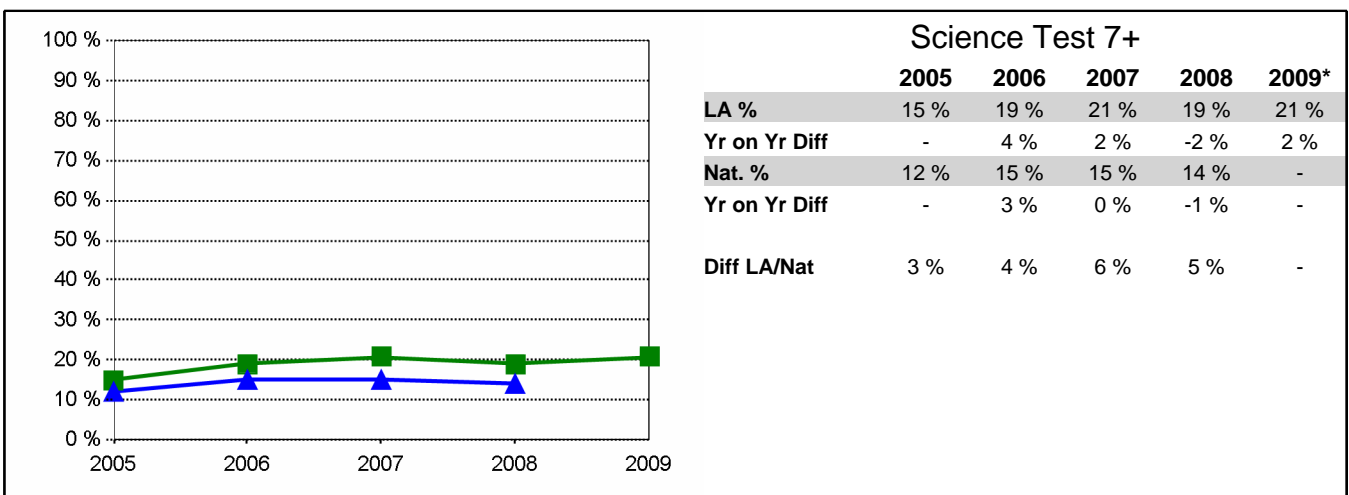
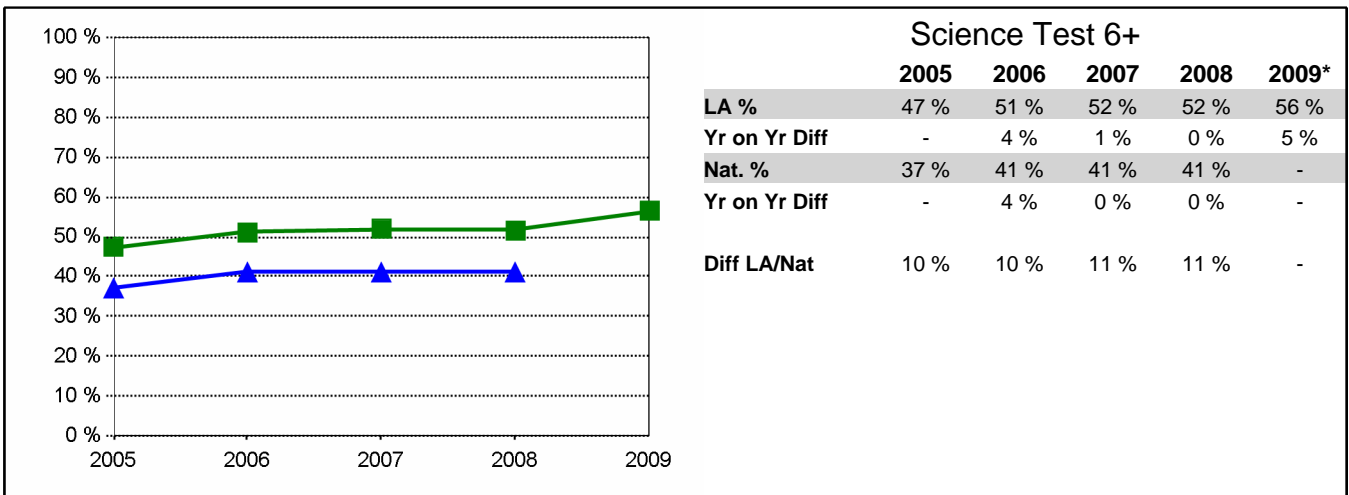
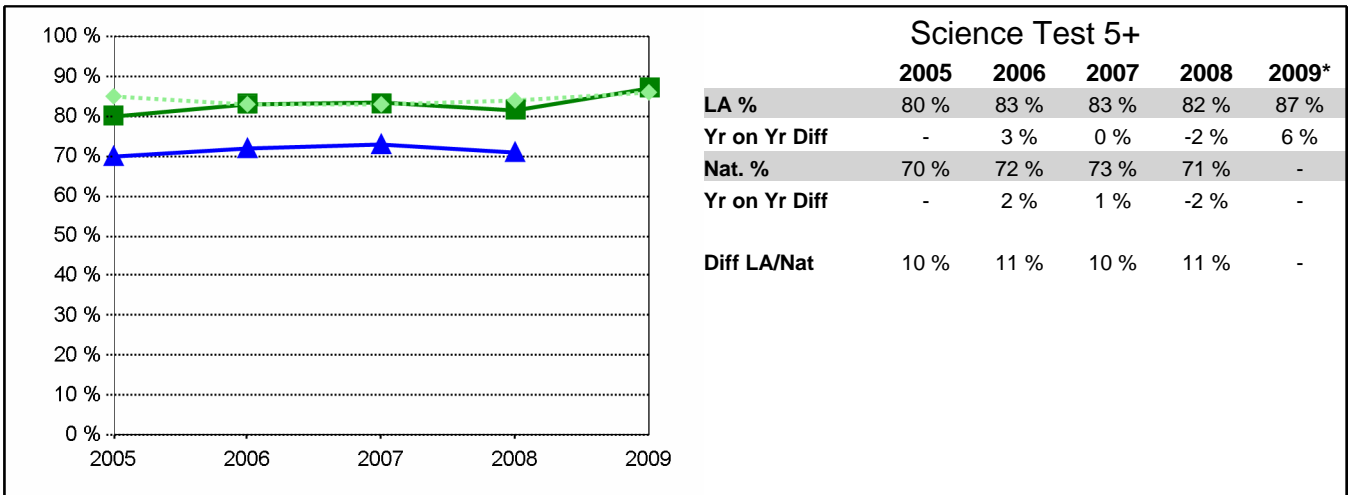
2009 Local Authority figures derived from the June 2009 Teacher Assessment collection. Historic Local Authority figures derived from DCSF data feeds.

Historic National Figures have been obtained from the DCSF Statistical First Release Tables.

Notes: Local Authority data for each year relates to all schools (including special schools). National data is based on all Maintained and Independent Schools.

# Key Stage Three Results 2005 - 2009

855 Leicestershire



\* 2009 results reflect Teacher Assessments

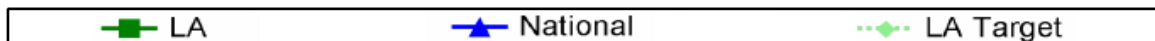
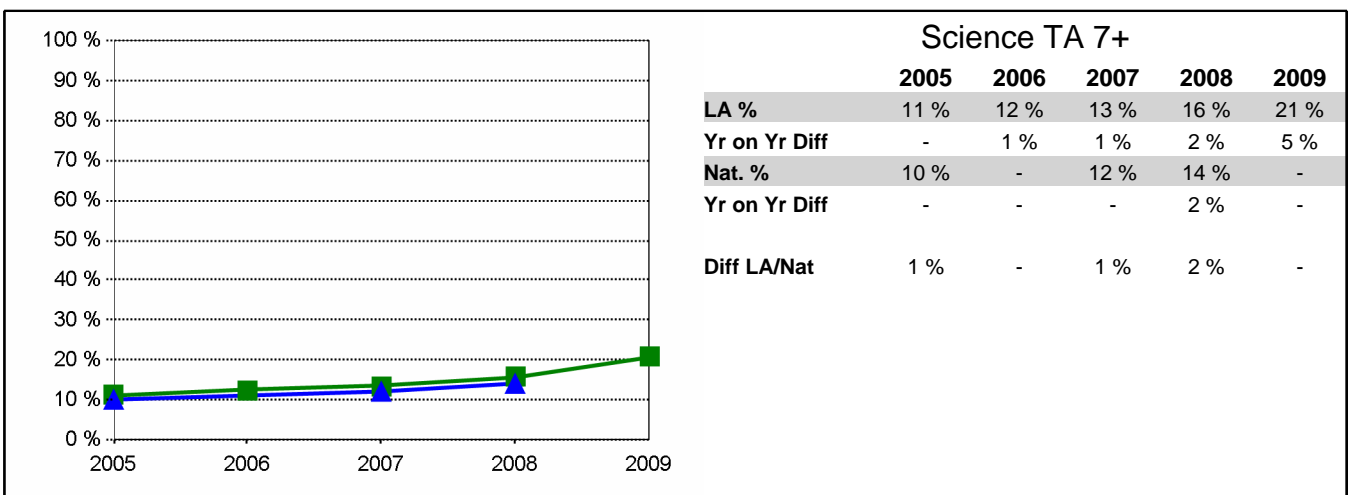
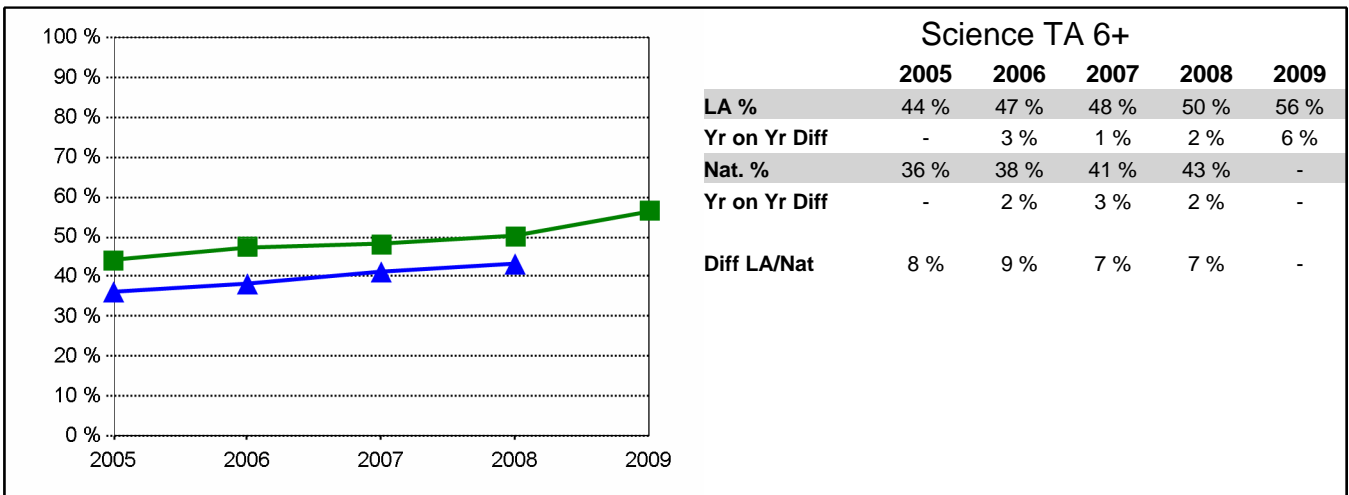
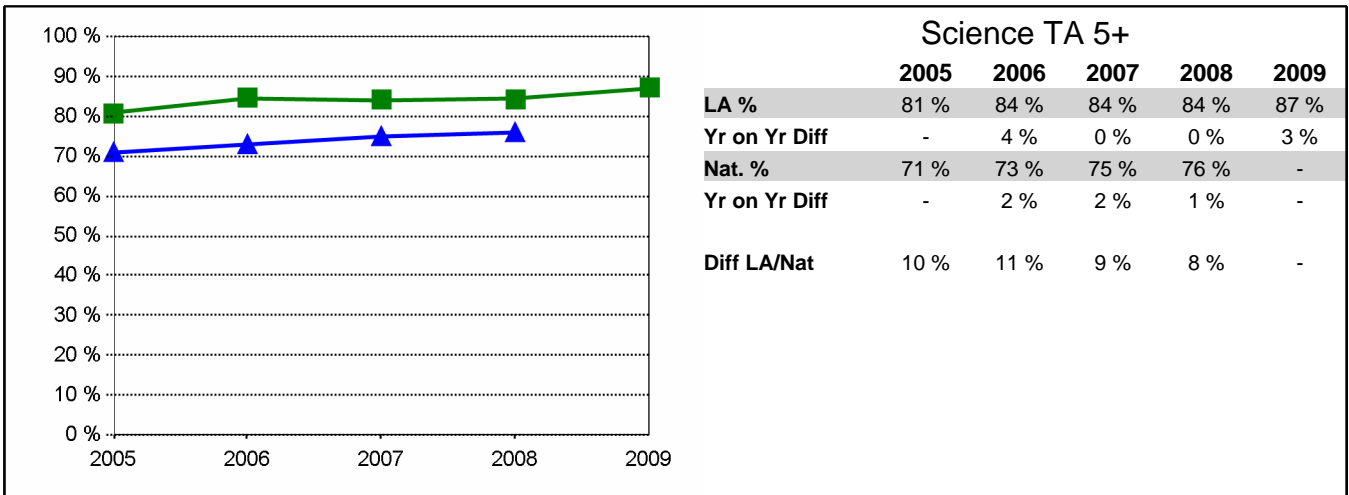
2009 Local Authority figures derived from the June 2009 Teacher Assessment collection. Historic Local Authority figures derived from DCSF data feeds.

Historic National Figures have been obtained from the DCSF Statistical First Release Tables.

Notes: Local Authority data for each year relates to all schools (including special schools). National data is based on all Maintained and Independent Schools.

# Key Stage Three Results 2005 - 2009

855 Leicestershire



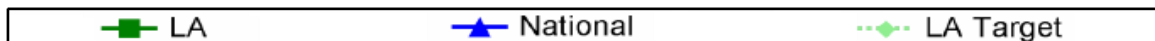
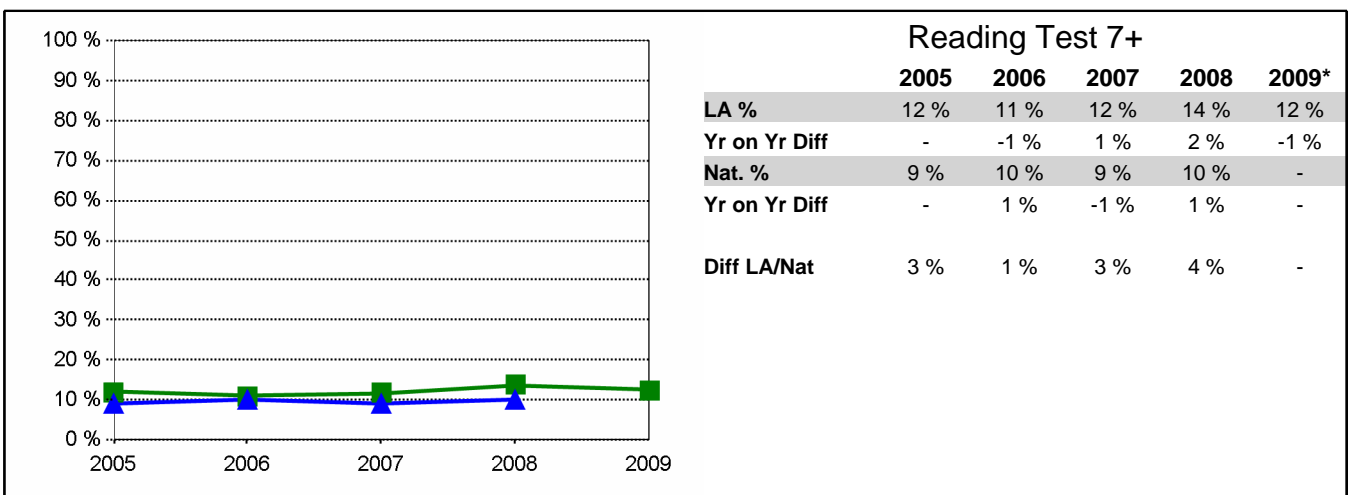
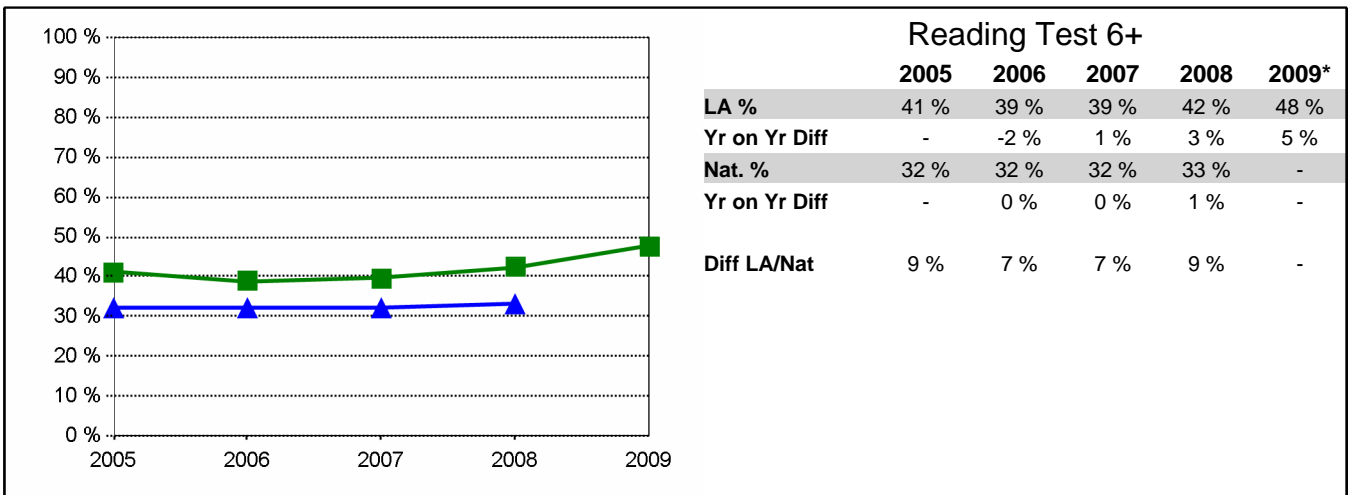
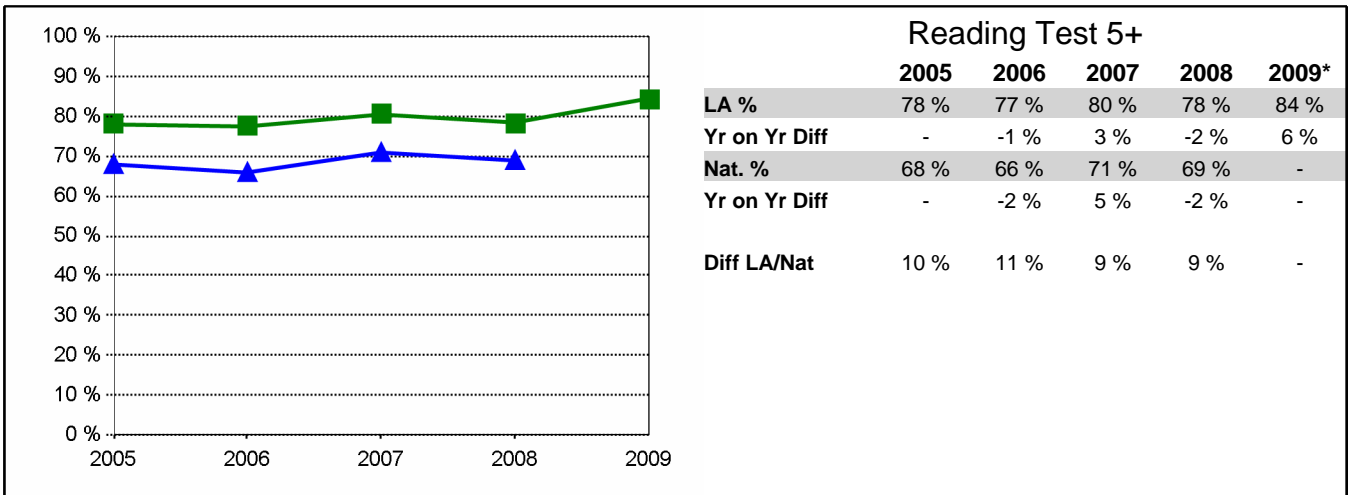
2009 Local Authority figures derived from the June 2009 Teacher Assessment collection. Historic Local Authority figures derived from DCSF data feeds.

Historic National Figures have been obtained from the DCSF Statistical First Release Tables.

Notes: Local Authority data for each year relates to all schools (including special schools). National data is based on all Maintained and Independent Schools.

# Key Stage Three Results 2005 - 2009

855 Leicestershire



\* 2009 results reflect Teacher Assessments

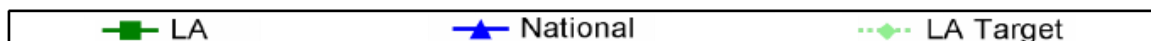
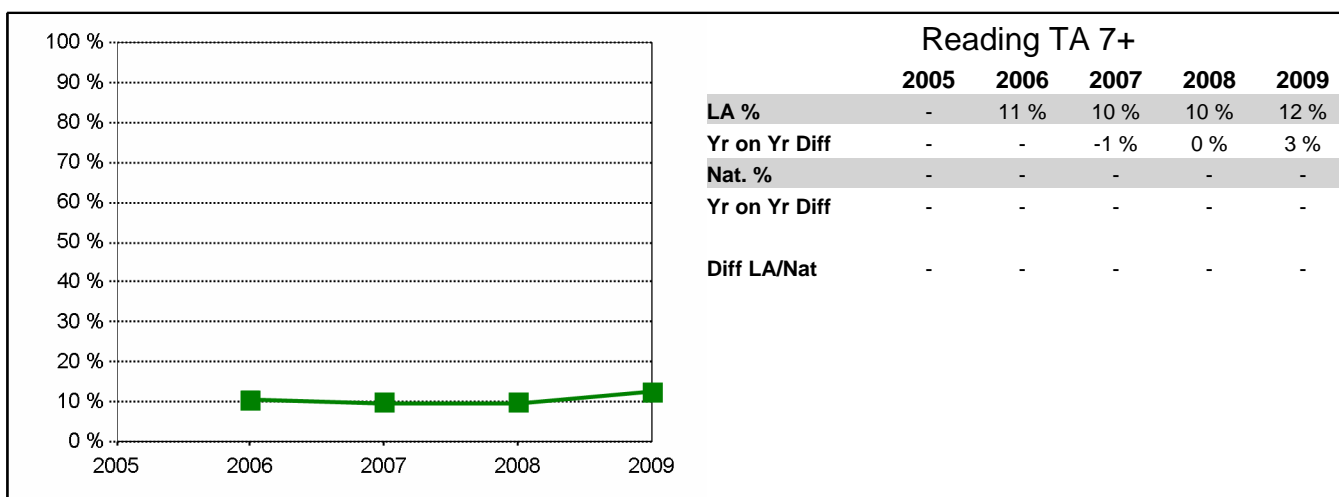
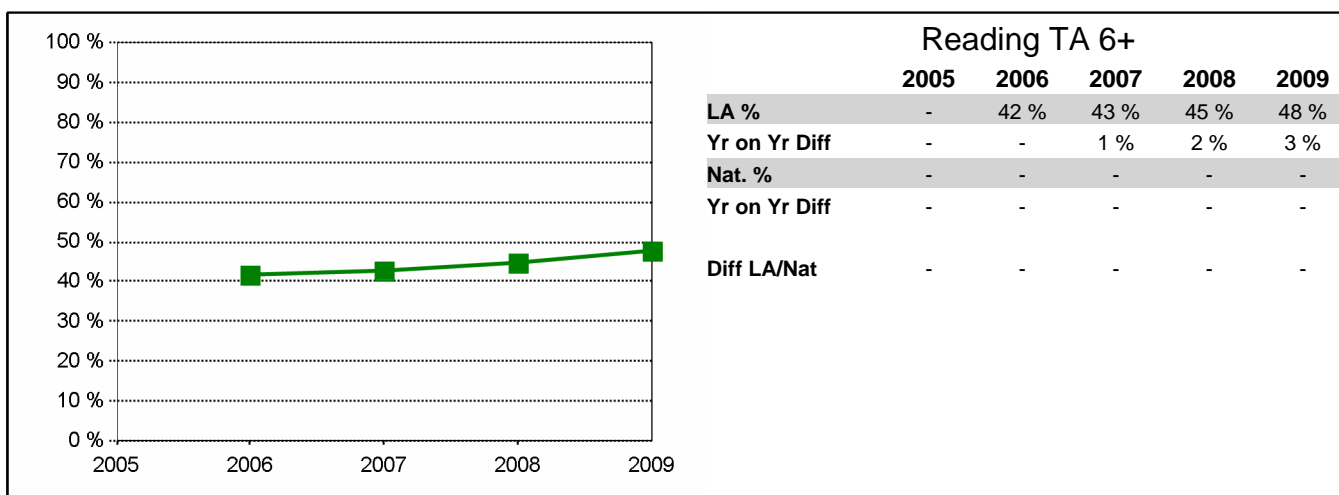
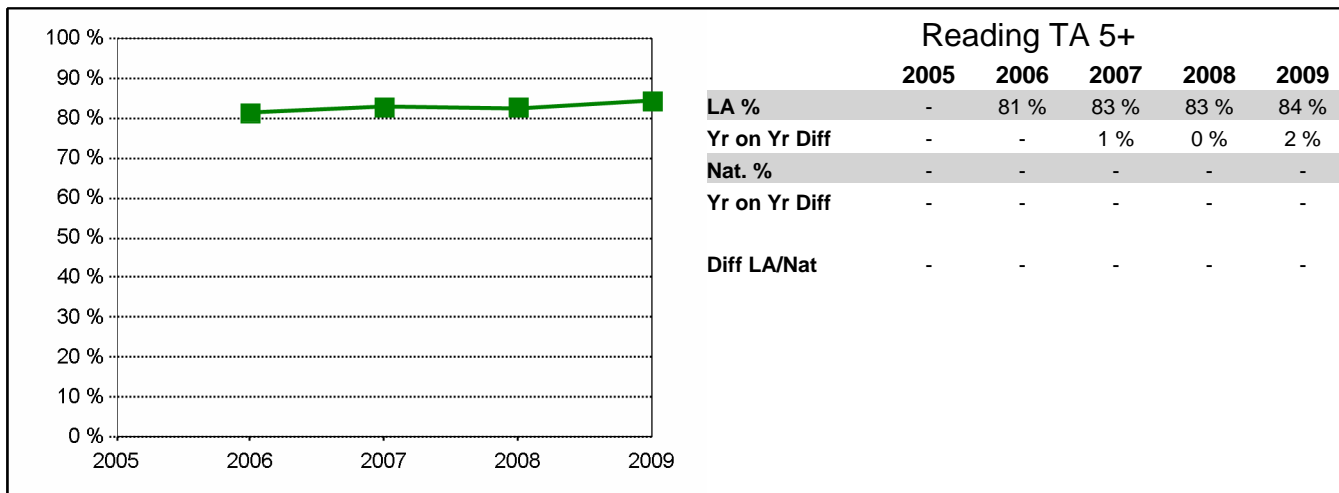
2009 Local Authority figures derived from the June 2009 Teacher Assessment collection. Historic Local Authority figures derived from DCSF data feeds.

Historic National Figures have been obtained from the DCSF Statistical First Release Tables.

Notes: Local Authority data for each year relates to all schools (including special schools). National data is based on all Maintained and Independent Schools.

# Key Stage Three Results 2005 - 2009

855 Leicestershire



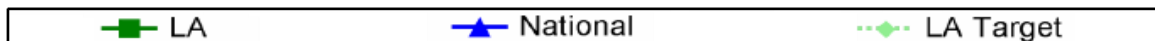
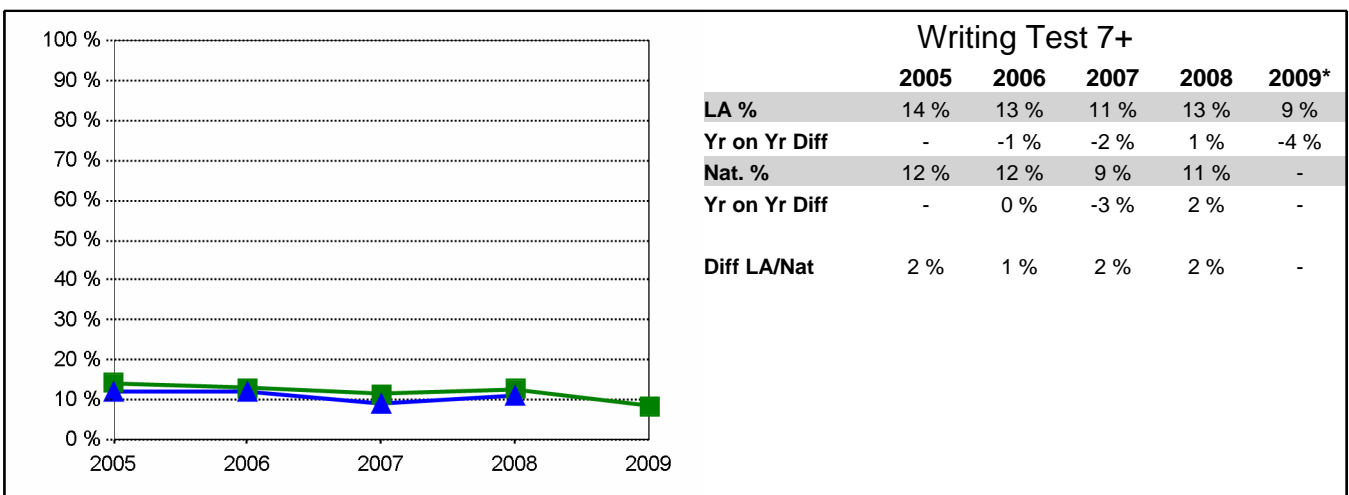
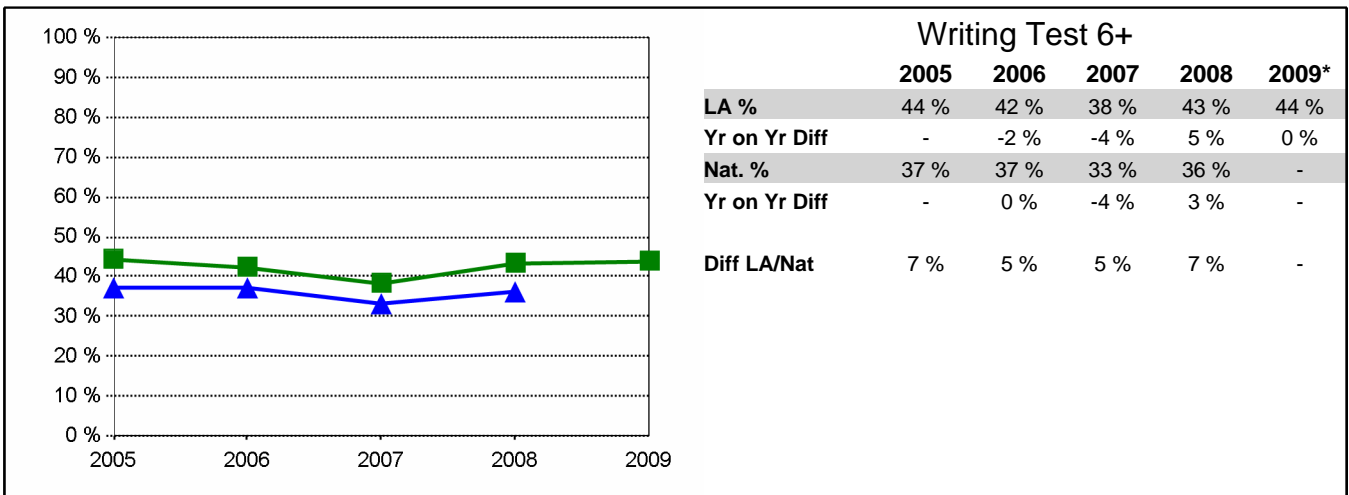
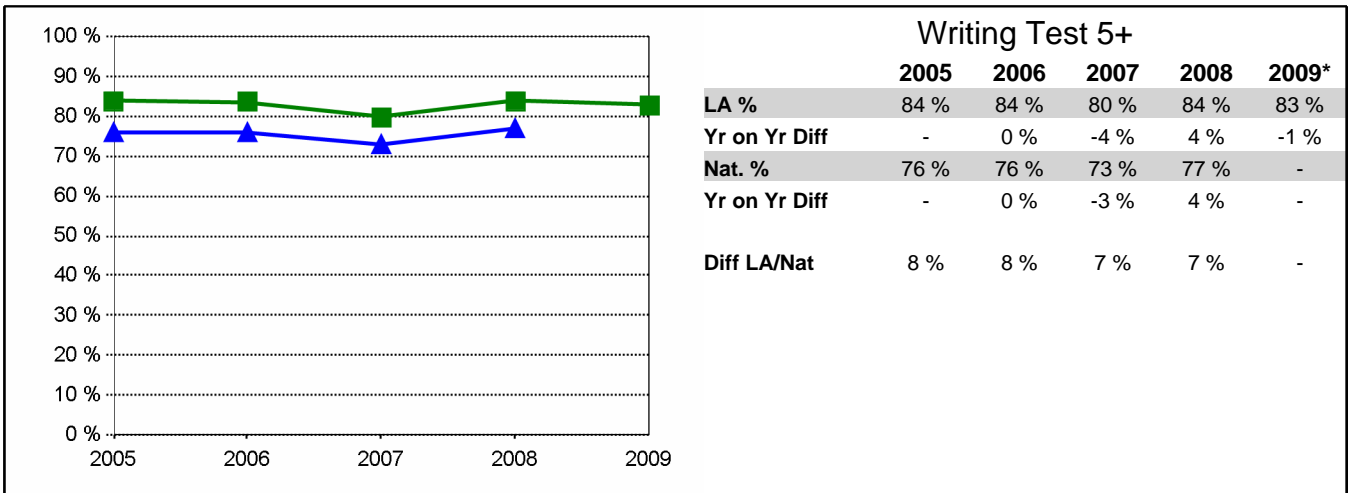
2009 Local Authority figures derived from the June 2009 Teacher Assessment collection. Historic Local Authority figures derived from DCSF data feeds.

Historic National Figures have been obtained from the DCSF Statistical First Release Tables.

Notes: Local Authority data for each year relates to all schools (including special schools). National data is based on all Maintained and Independent Schools.

## Key Stage Three Results 2005 - 2009

855 Leicestershire



\* 2009 results reflect Teacher Assessments

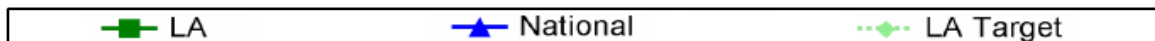
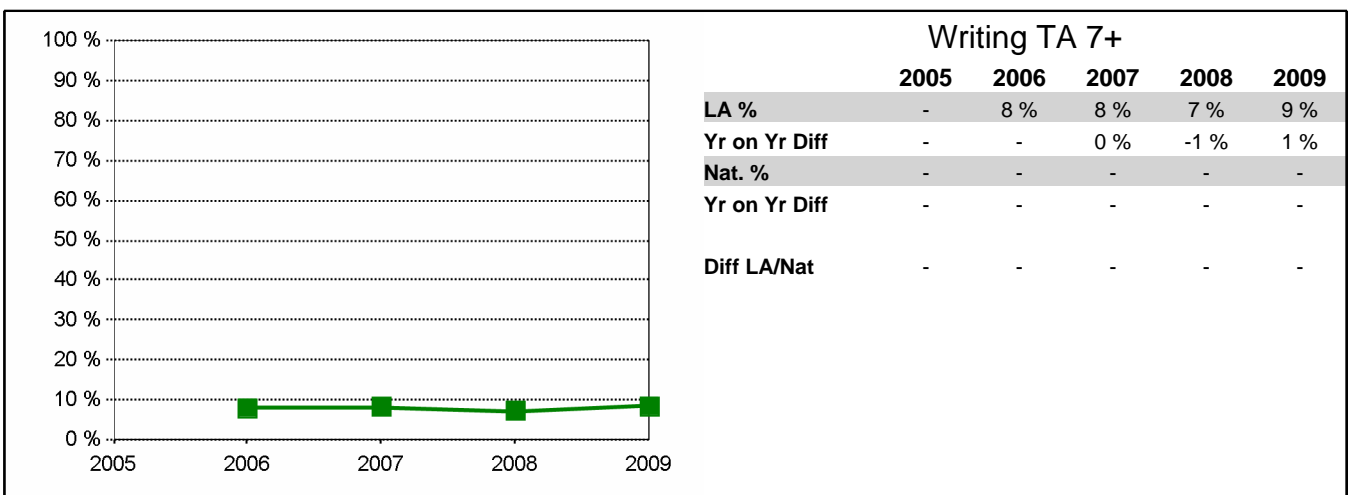
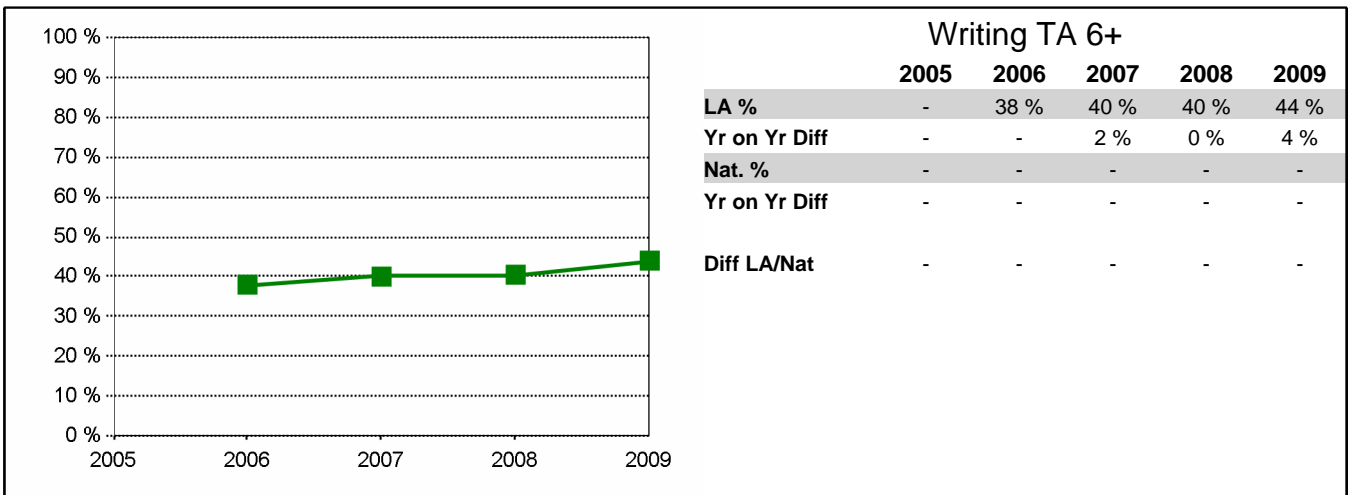
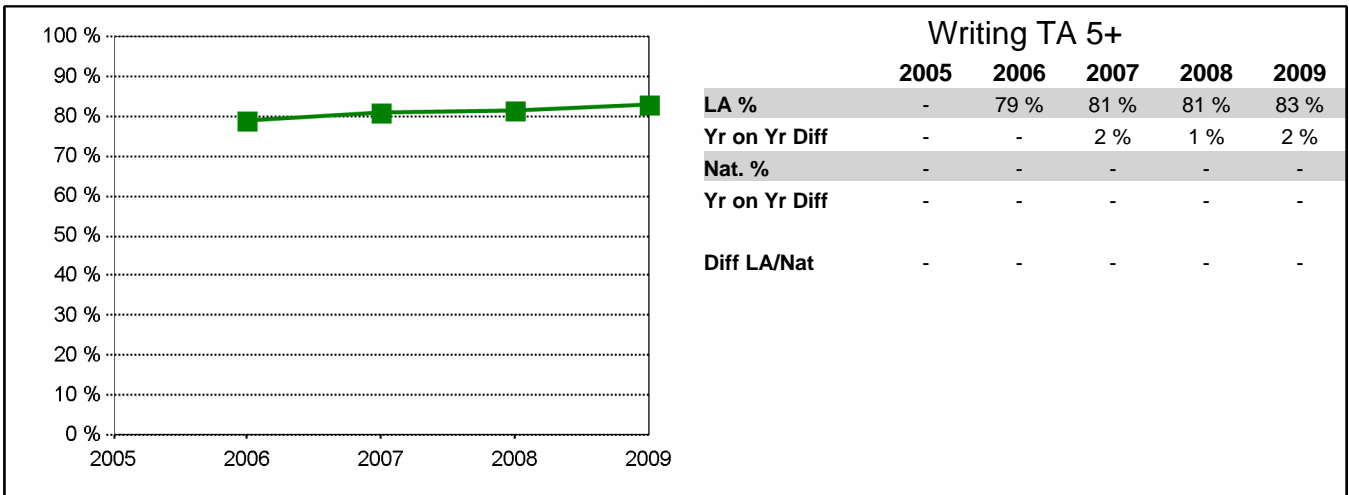
2009 Local Authority figures derived from the June 2009 Teacher Assessment collection. Historic Local Authority figures derived from DCSF data feeds.

Historic National Figures have been obtained from the DCSF Statistical First Release Tables.

Notes: Local Authority data for each year relates to all schools (including special schools). National data is based on all Maintained and Independent Schools.

# Key Stage Three Results 2005 - 2009

855 Leicestershire



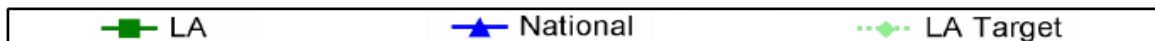
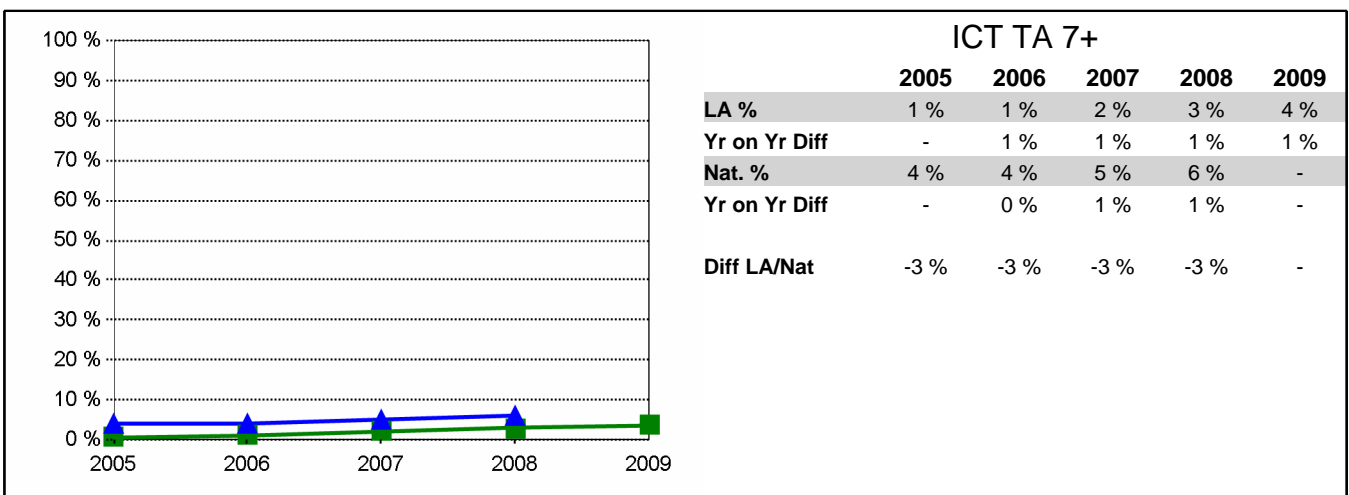
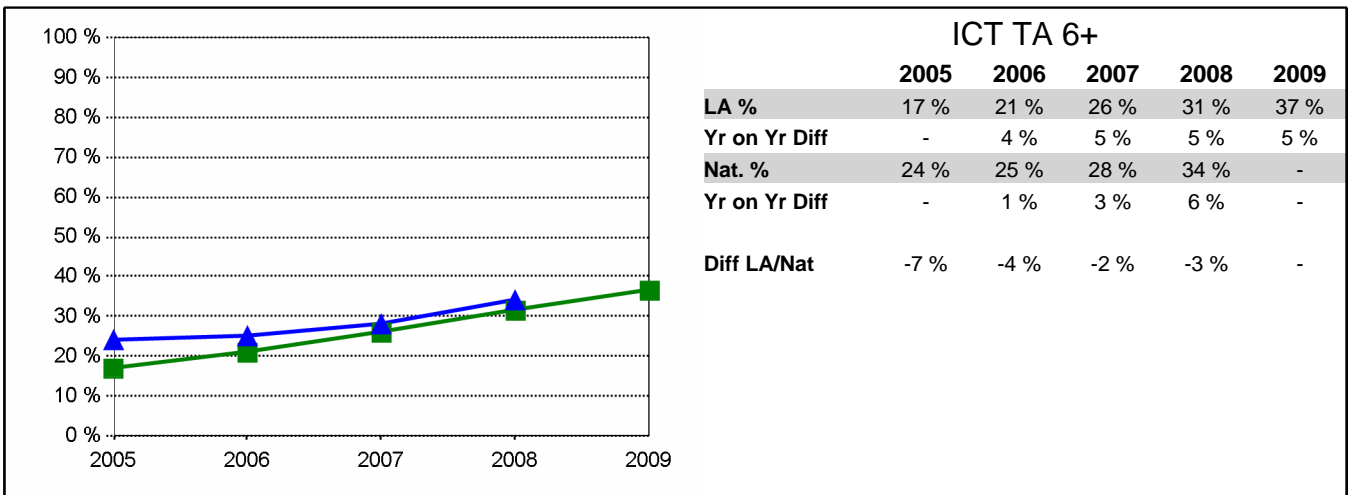
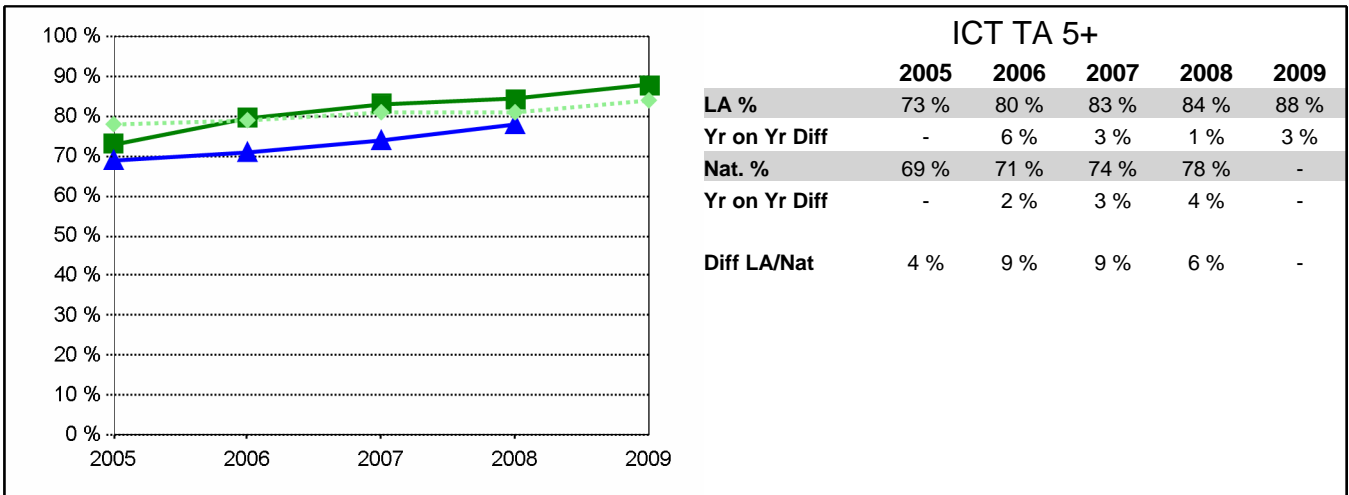
2009 Local Authority figures derived from the June 2009 Teacher Assessment collection. Historic Local Authority figures derived from DCSF data feeds.

Historic National Figures have been obtained from the DCSF Statistical First Release Tables.

Notes: Local Authority data for each year relates to all schools (including special schools). National data is based on all Maintained and Independent Schools.

# Key Stage Three Results 2005 - 2009

855 Leicestershire



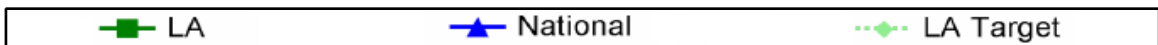
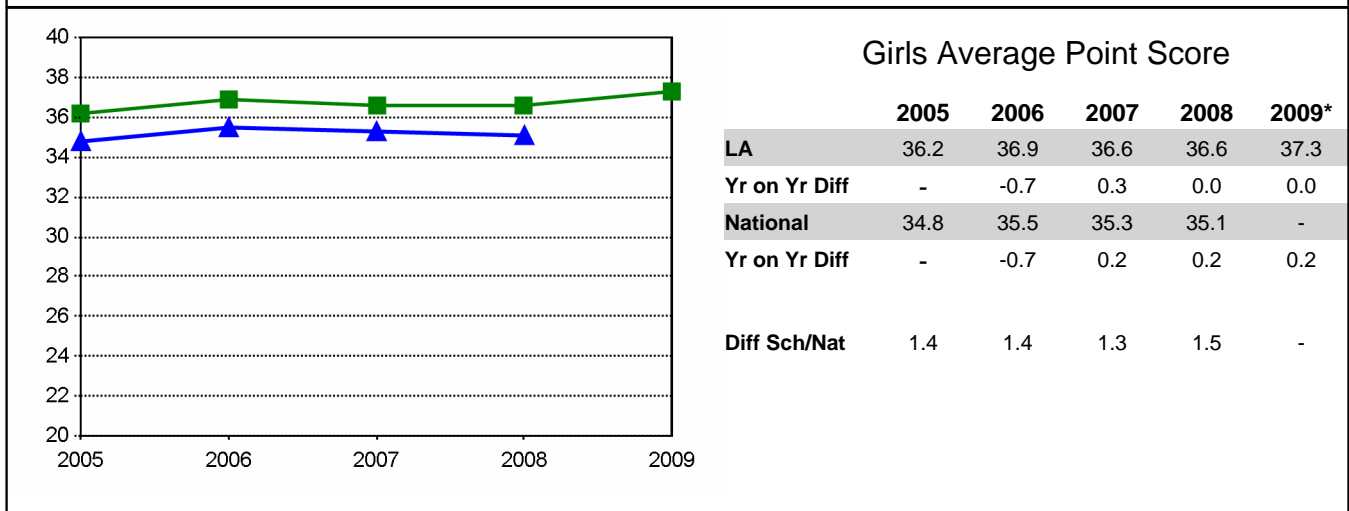
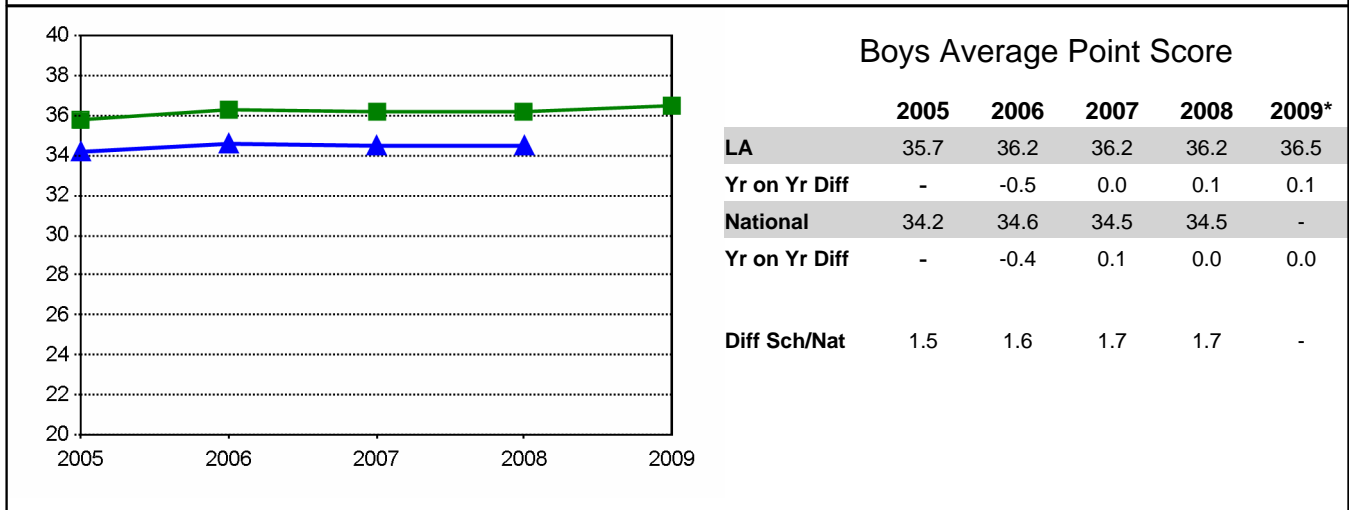
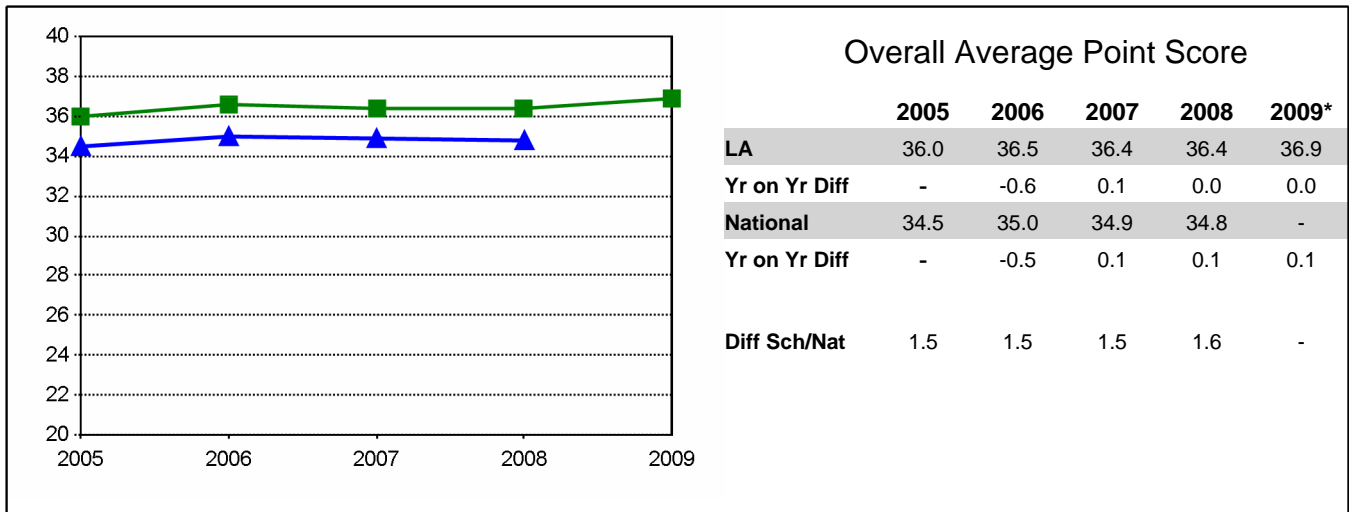
2009 Local Authority figures derived from the June 2009 Teacher Assessment collection. Historic Local Authority figures derived from DCSF data feeds.

Historic National Figures have been obtained from the DCSF Statistical First Release Tables.

Notes: Local Authority data for each year relates to all schools (including special schools). National data is based on all Maintained and Independent Schools.

# Key Stage Three Results 2005 - 2009: Average Point Score

855 Leicestershire



\* 2009 APS based on Teacher Assessments

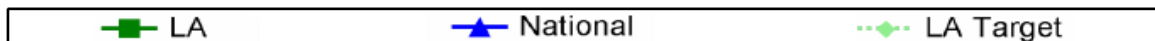
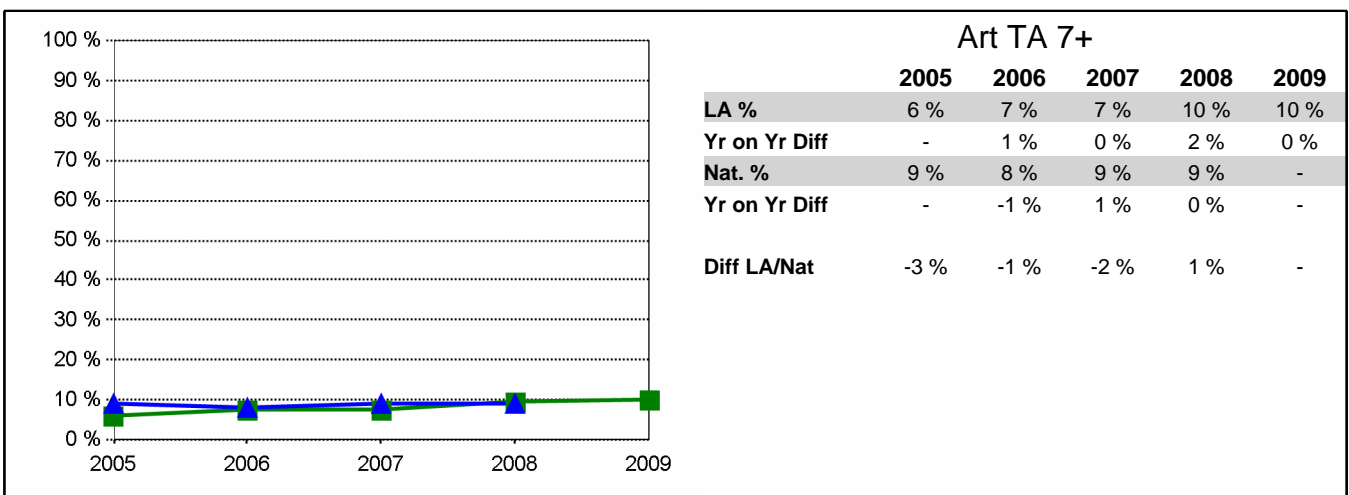
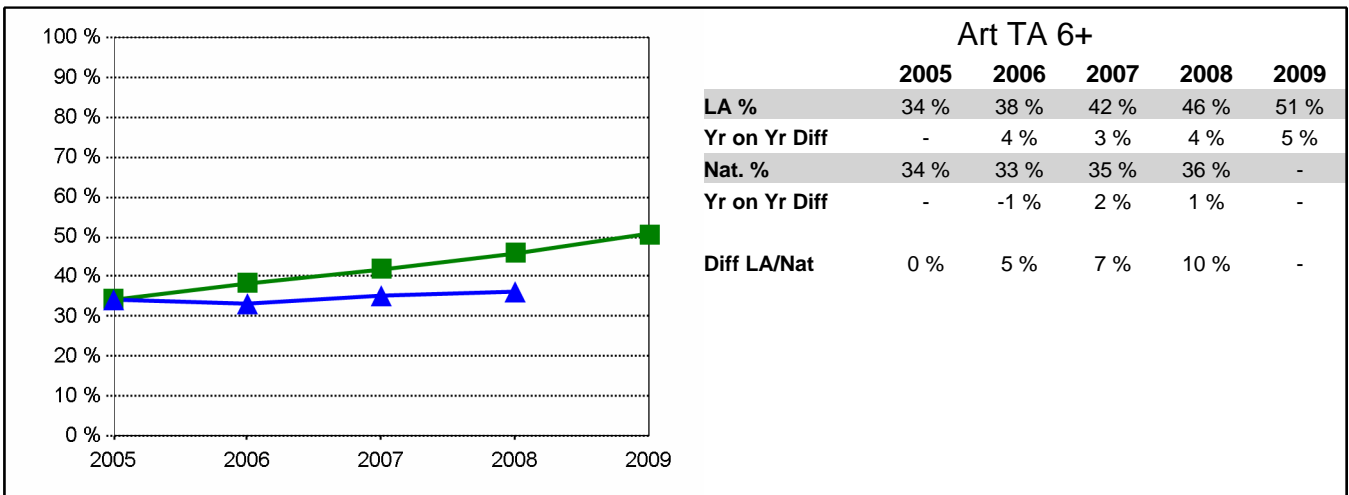
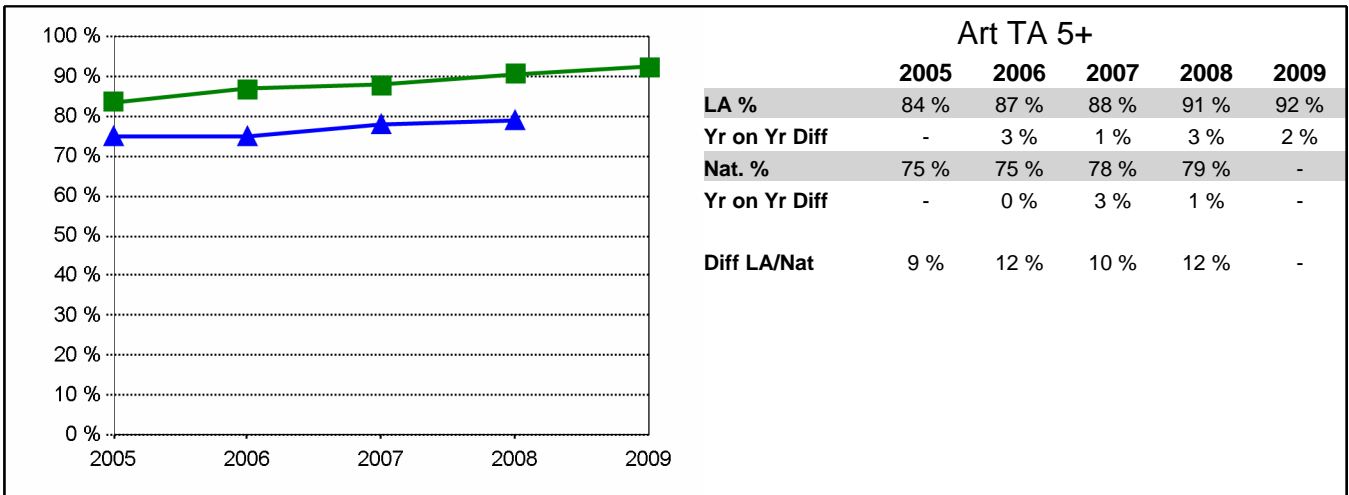
2009 Local Authority figures derived from the June 2009 Teacher Assessment collection. Historic Local Authority figures derived from DCSF data feeds.

Historic National Figures have been obtained from the DCSF Statistical First Release Tables.

Notes: Local Authority data for each year relates to all schools (including special schools). National data is based on all Maintained and Independent Schools.

# Key Stage Three Results 2005 - 2009

855 Leicestershire



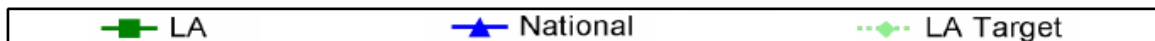
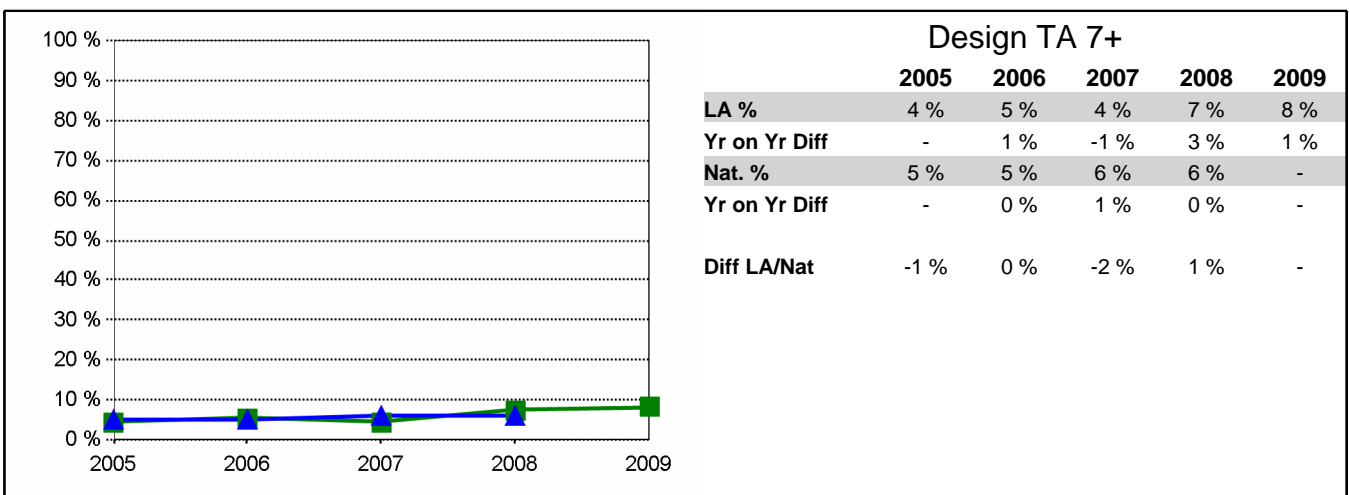
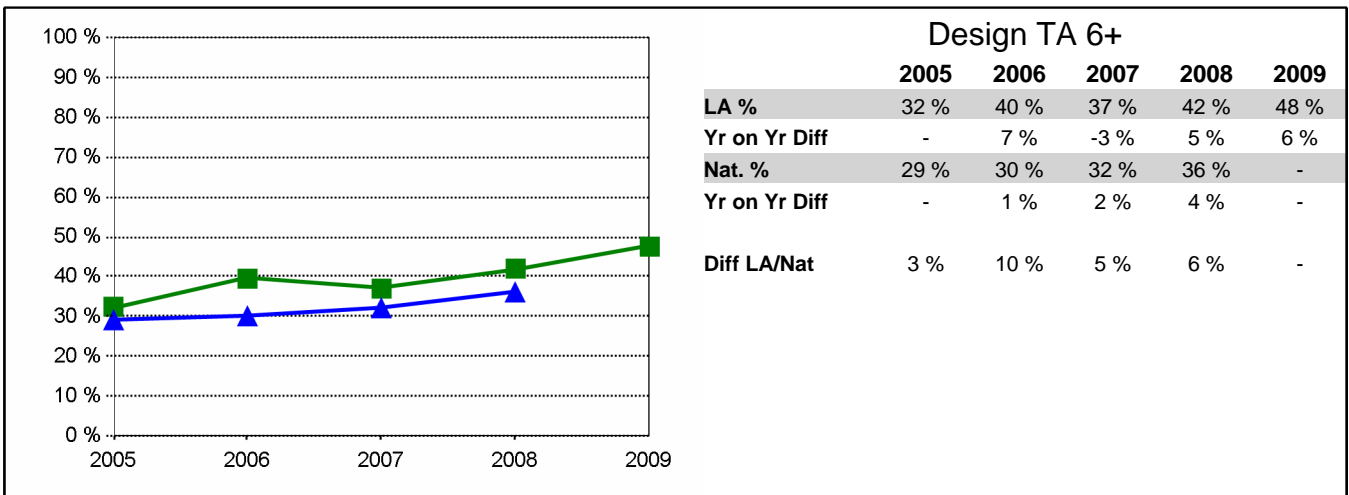
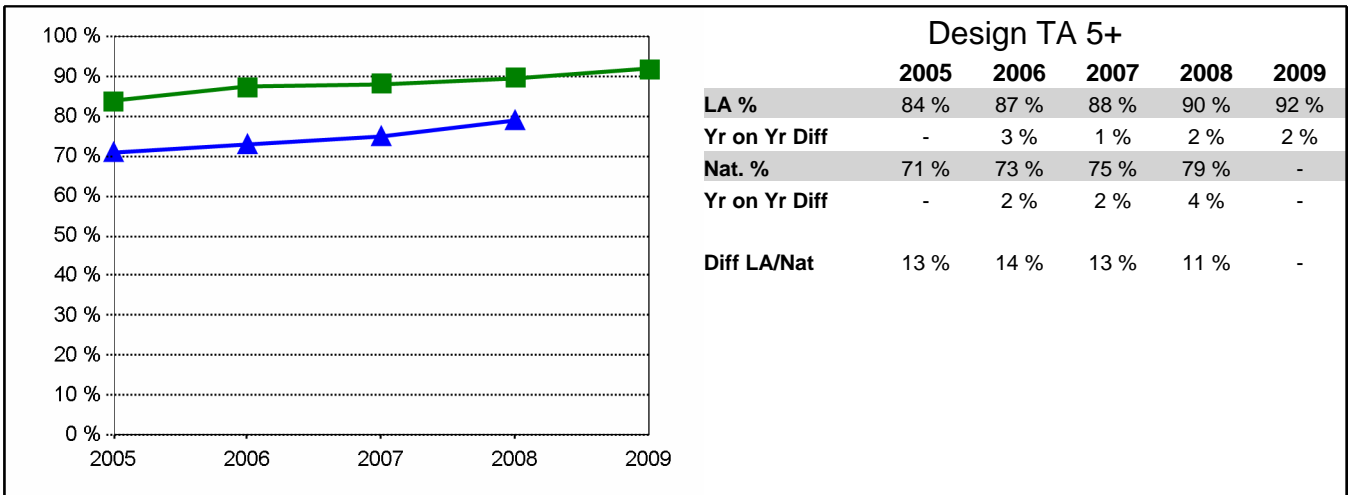
2009 Local Authority figures derived from the June 2009 Teacher Assessment collection. Historic Local Authority figures derived from DCSF data feeds.

Historic National Figures have been obtained from the DCSF Statistical First Release Tables.

Notes: Local Authority data for each year relates to all schools (including special schools). National data is based on all Maintained and Independent Schools.

# Key Stage Three Results 2005 - 2009

855 Leicestershire



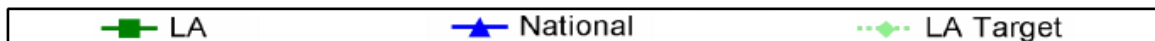
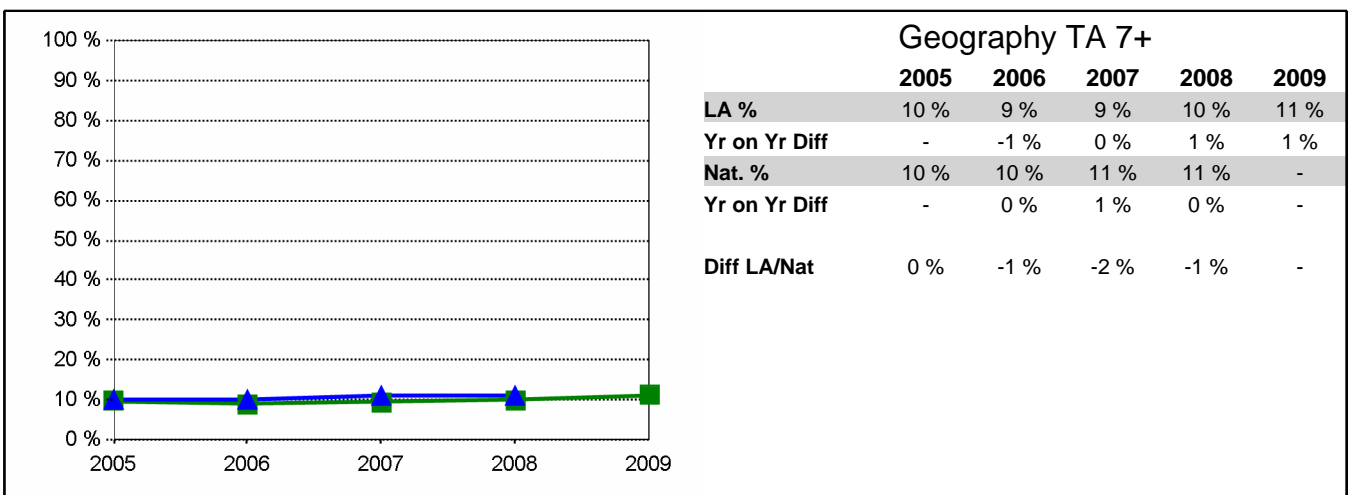
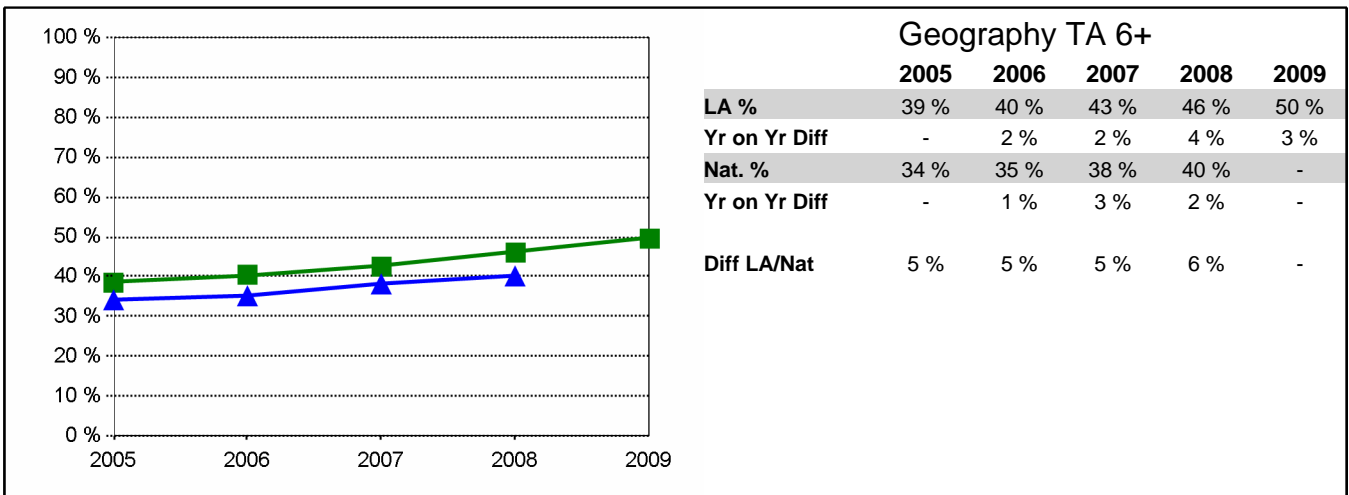
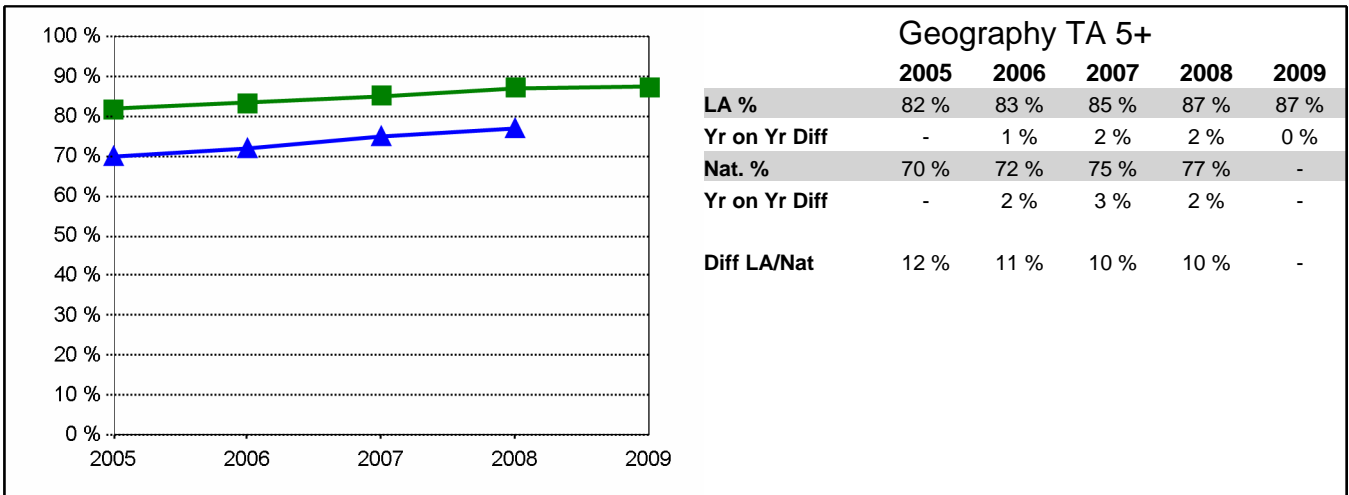
2009 Local Authority figures derived from the June 2009 Teacher Assessment collection. Historic Local Authority figures derived from DCSF data feeds.

Historic National Figures have been obtained from the DCSF Statistical First Release Tables.

Notes: Local Authority data for each year relates to all schools (including special schools). National data is based on all Maintained and Independent Schools.

# Key Stage Three Results 2005 - 2009

855 Leicestershire



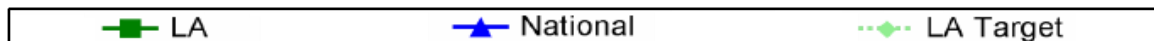
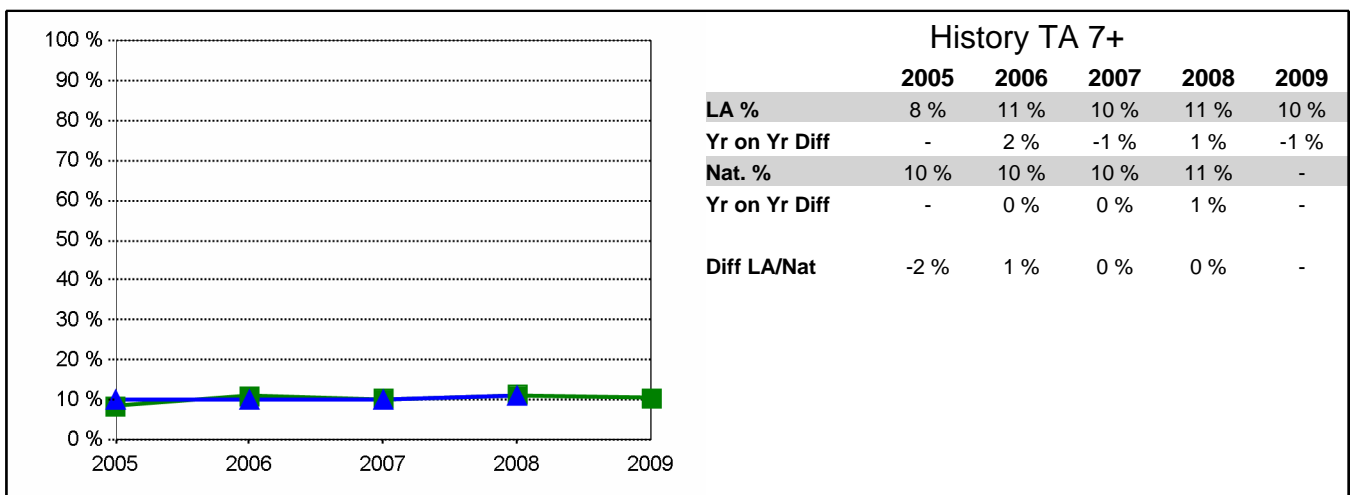
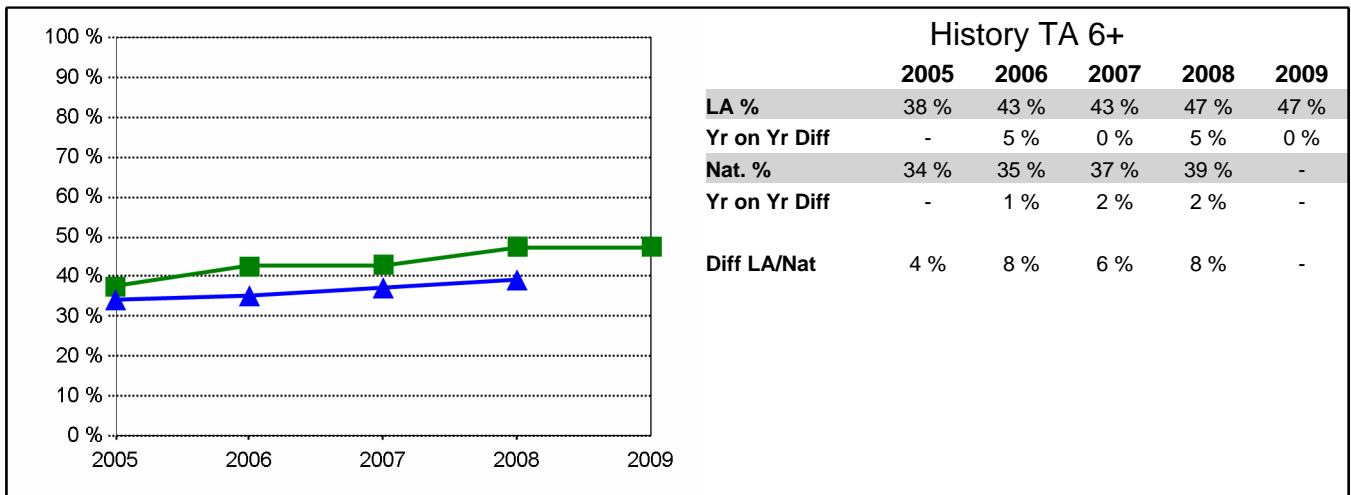
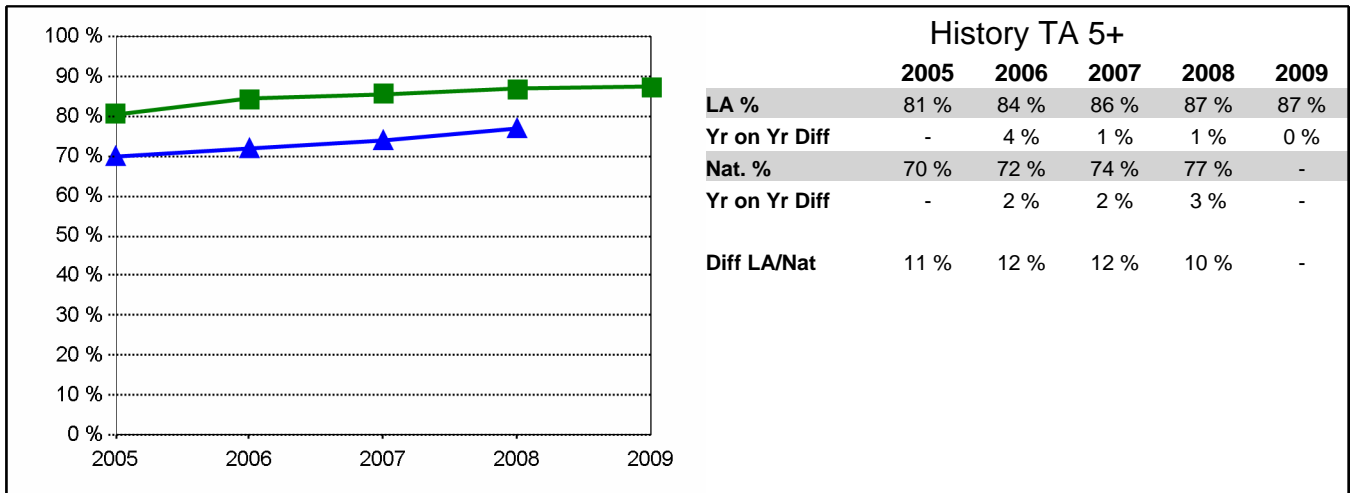
2009 Local Authority figures derived from the June 2009 Teacher Assessment collection. Historic Local Authority figures derived from DCSF data feeds.

Historic National Figures have been obtained from the DCSF Statistical First Release Tables.

Notes: Local Authority data for each year relates to all schools (including special schools). National data is based on all Maintained and Independent Schools.

## Key Stage Three Results 2005 - 2009

855 Leicestershire



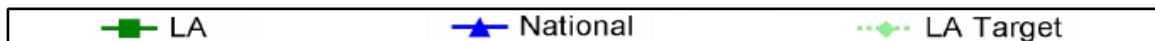
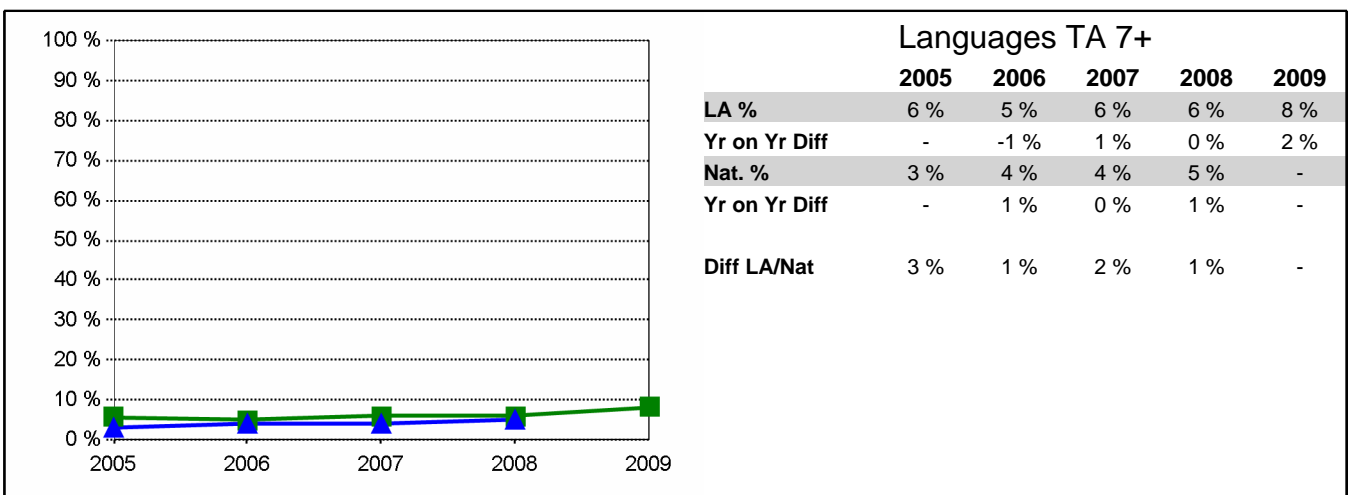
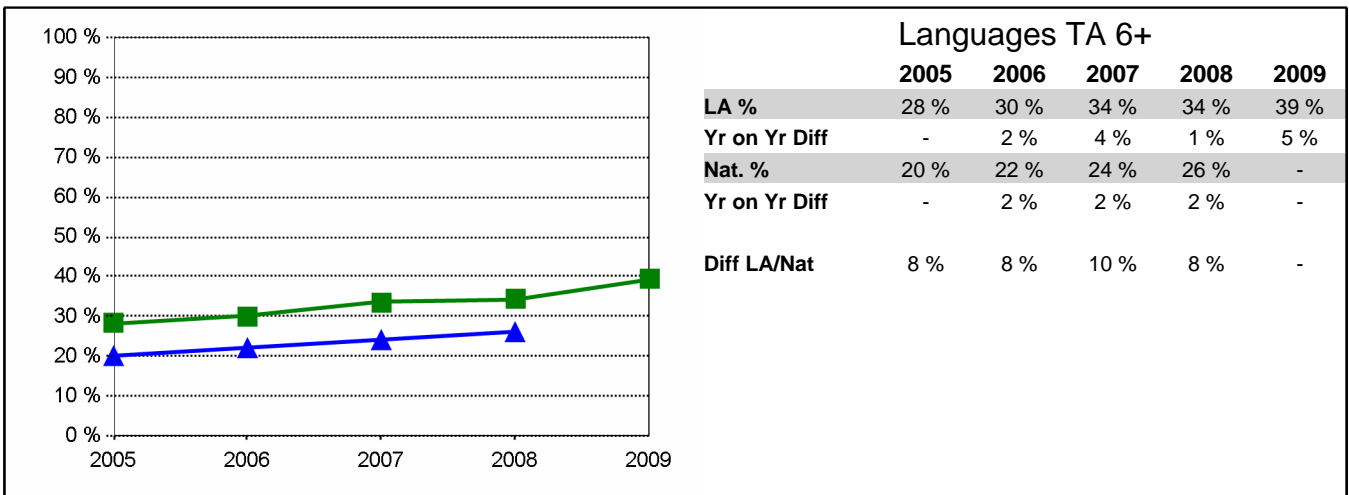
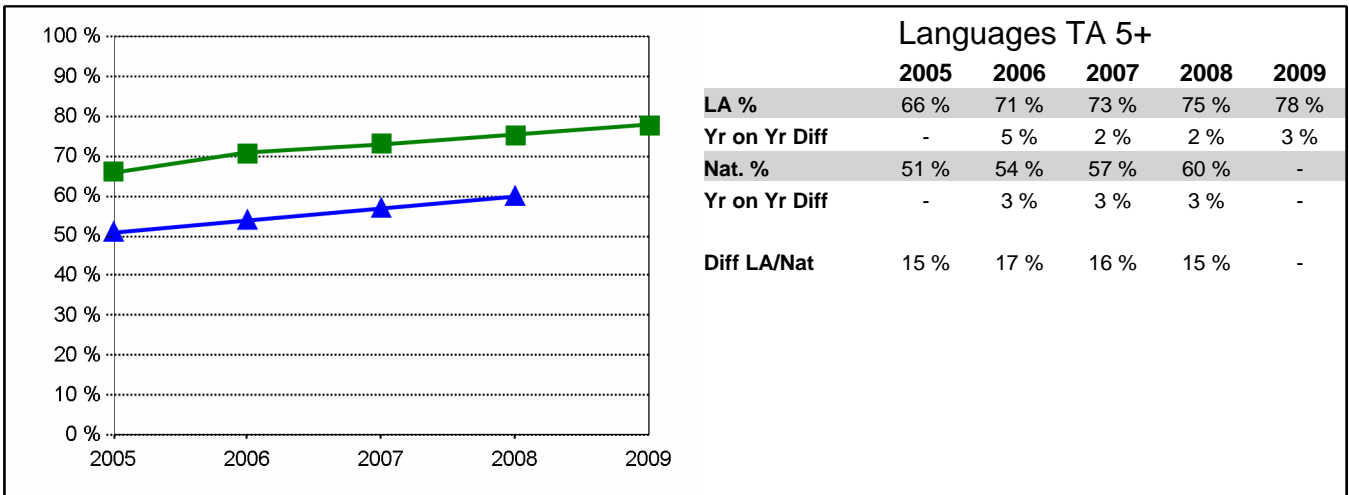
2009 Local Authority figures derived from the June 2009 Teacher Assessment collection. Historic Local Authority figures derived from DCSF data feeds.

Historic National Figures have been obtained from the DCSF Statistical First Release Tables.

Notes: Local Authority data for each year relates to all schools (including special schools). National data is based on all Maintained and Independent Schools.

# Key Stage Three Results 2005 - 2009

855 Leicestershire



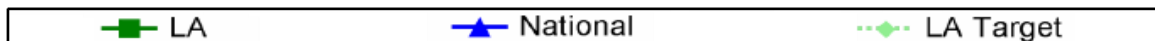
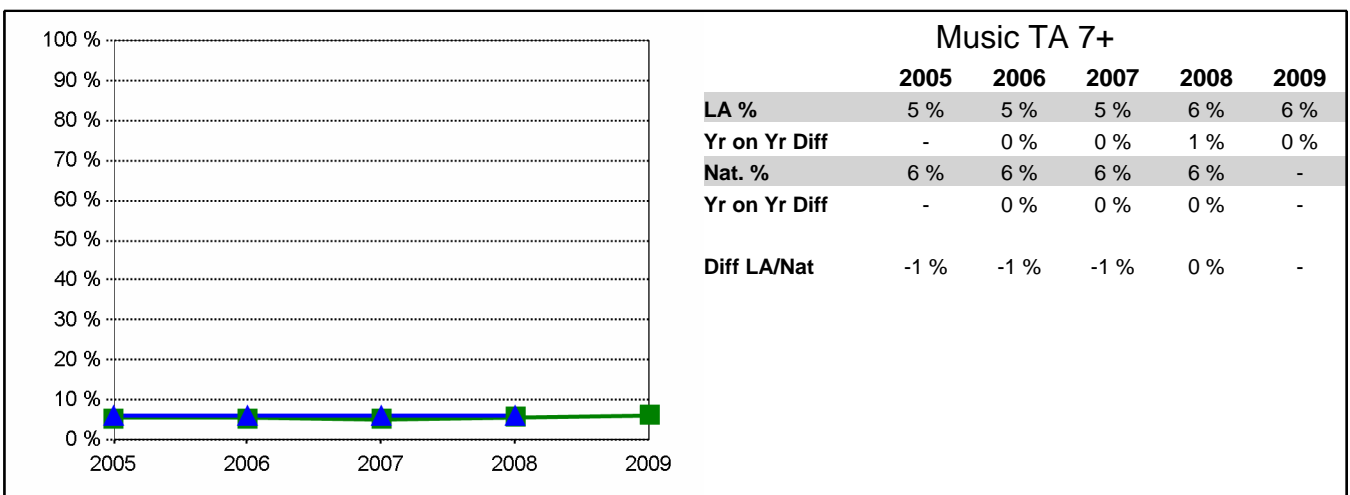
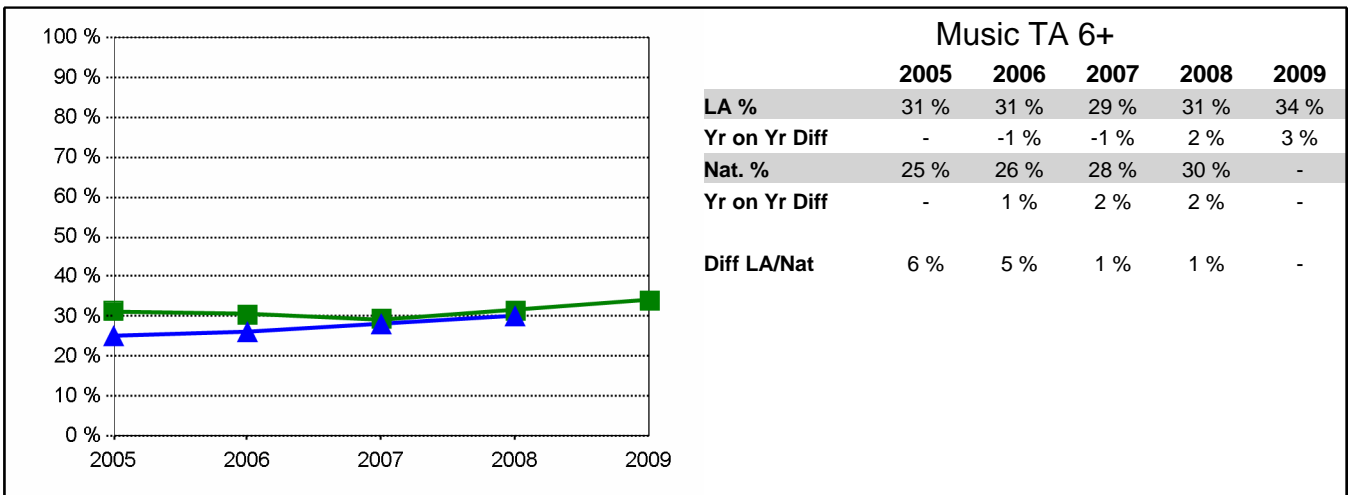
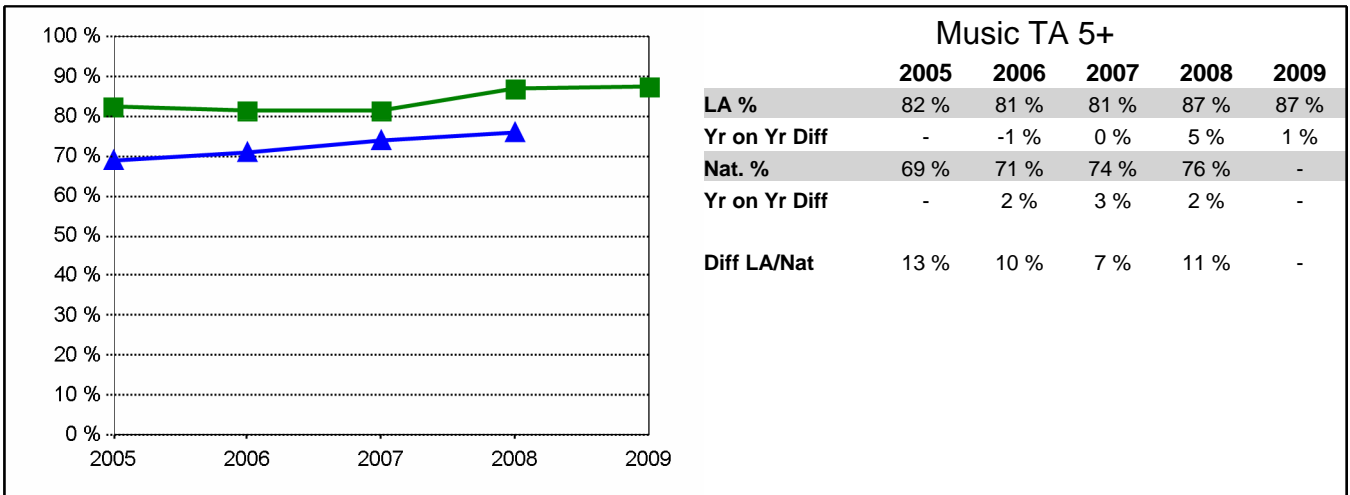
2009 Local Authority figures derived from the June 2009 Teacher Assessment collection. Historic Local Authority figures derived from DCSF data feeds.

Historic National Figures have been obtained from the DCSF Statistical First Release Tables.

Notes: Local Authority data for each year relates to all schools (including special schools). National data is based on all Maintained and Independent Schools.

## Key Stage Three Results 2005 - 2009

855 Leicestershire



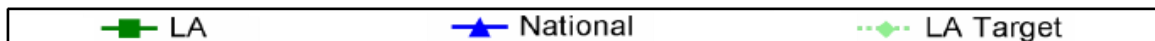
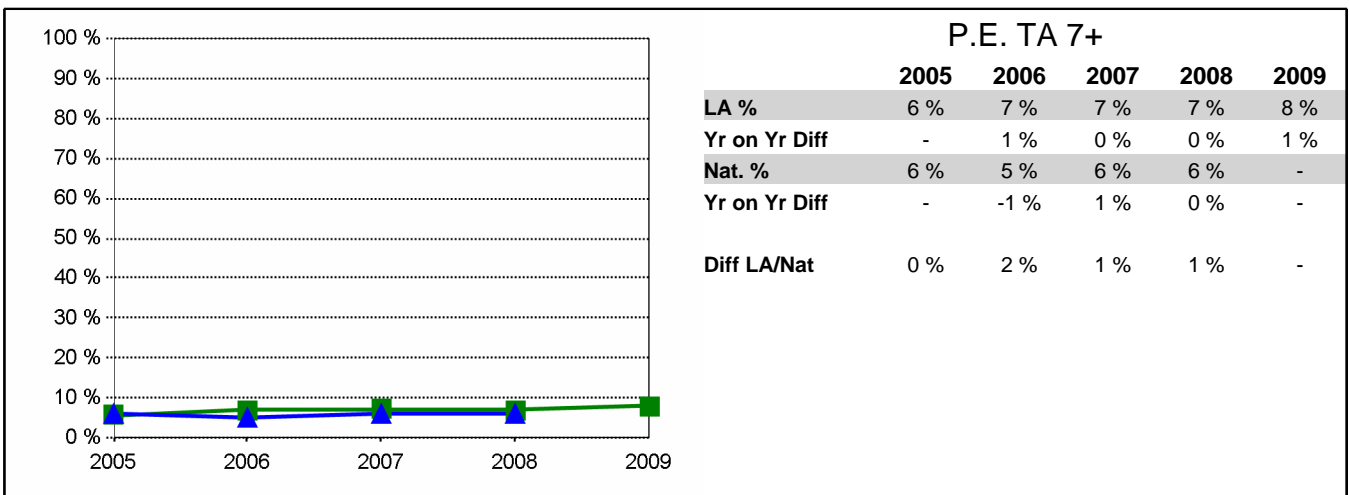
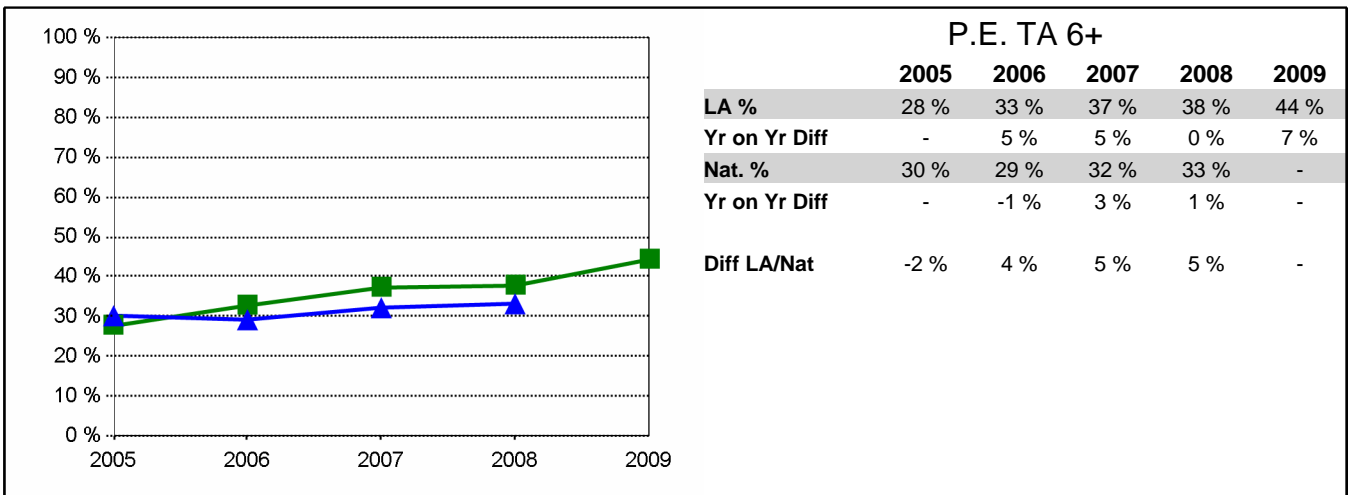
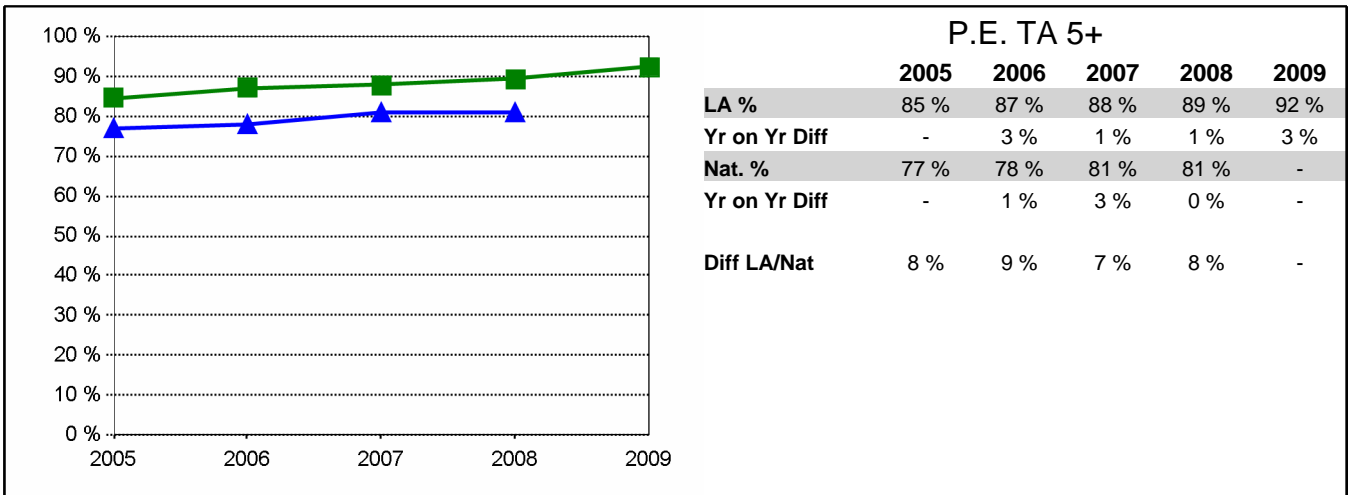
2009 Local Authority figures derived from the June 2009 Teacher Assessment collection. Historic Local Authority figures derived from DCSF data feeds.

Historic National Figures have been obtained from the DCSF Statistical First Release Tables.

Notes: Local Authority data for each year relates to all schools (including special schools). National data is based on all Maintained and Independent Schools.

# Key Stage Three Results 2005 - 2009

855 Leicestershire



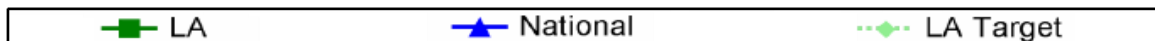
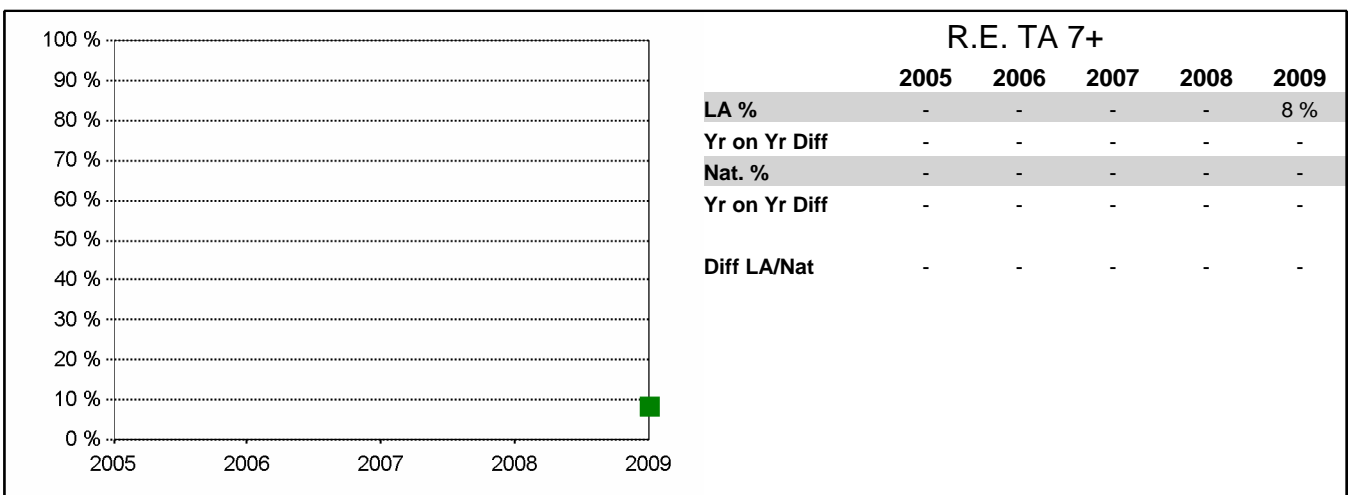
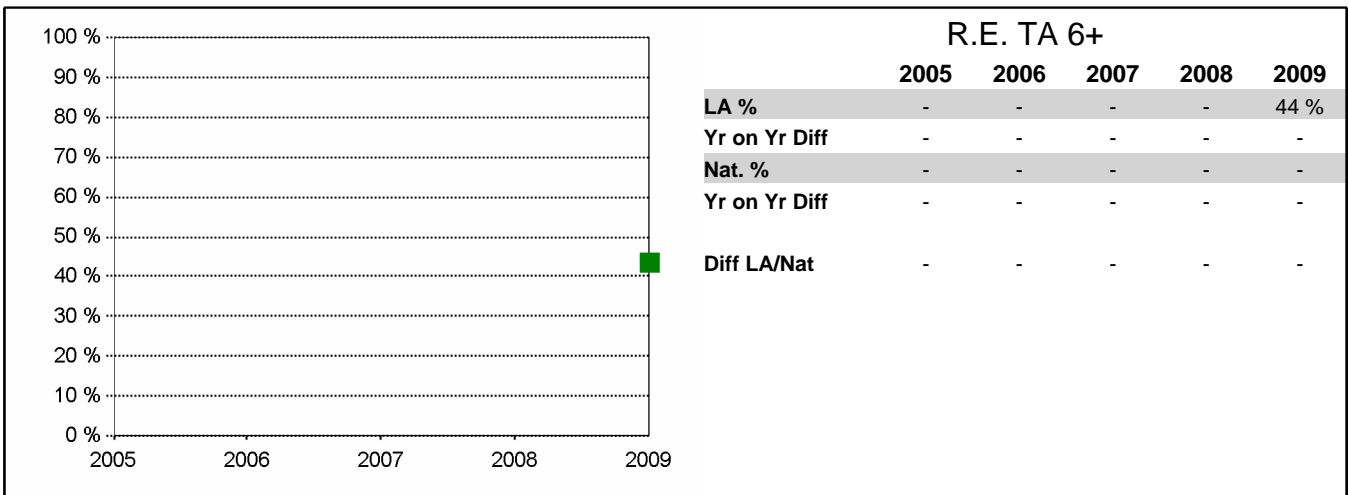
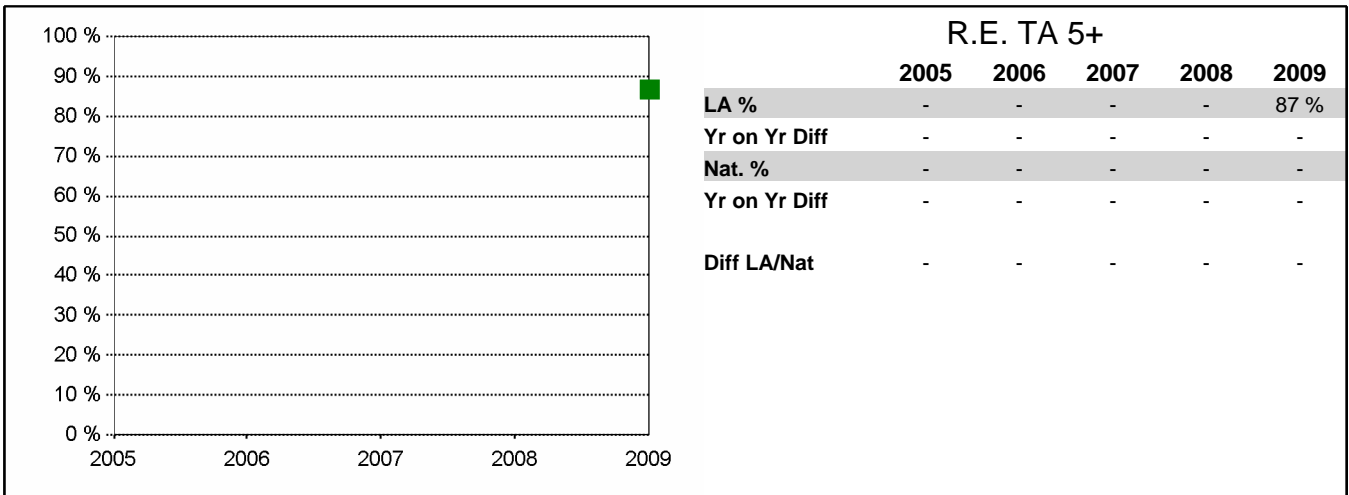
2009 Local Authority figures derived from the June 2009 Teacher Assessment collection. Historic Local Authority figures derived from DCSF data feeds.

Historic National Figures have been obtained from the DCSF Statistical First Release Tables.

Notes: Local Authority data for each year relates to all schools (including special schools). National data is based on all Maintained and Independent Schools.

# Key Stage Three Results 2005 - 2009

855 Leicestershire



2009 Local Authority figures derived from the June 2009 Teacher Assessment collection. Historic Local Authority figures derived from DCSF data feeds.

Historic National Figures have been obtained from the DCSF Statistical First Release Tables.

Notes: Local Authority data for each year relates to all schools (including special schools). National data is based on all Maintained and Independent Schools.

## Key Stage Three Results 2005 - 2009: Pupil Numbers (Gender and Ethnicity)

855 Leicestershire

Gender	LA				
	2005	2006	2007	2008	2009*
Boys	4,008	3,987	3,800	3,823	3,887
Girls	3,942	3,701	3,640	3,667	3,593
All	7,950	7,687	7,440	7,489	7,480

Ethnicity	LA				
	2005	2006	2007	2008	2009*
White British	6,849	6,805	6,436	6,539	6,504
Irish	15	19	12	15	10
Irish Traveller	1	-	2	1	5
Gypsy/Roma	4	3	2	1	5
Any other White background	148	114	100	92	137
Total White	7,017	6,941	6,553	6,648	6,661
White and Black Caribbean	52	41	62	65	72
White and Black African	7	11	14	8	10
White and Asian	47	38	61	49	59
Any other Mixed background	51	38	47	40	37
Total Mixed	157	128	184	161	178
Indian	386	392	383	406	373
Pakistani	25	13	26	22	24
Bangladeshi	26	31	31	30	39
Any other Asian background	48	32	42	46	44
Total Asian	485	468	482	504	480
Black Caribbean	13	11	8	11	11
Black African	15	3	10	16	14
Any other Black background	1	5	4	2	5
Total Black	29	19	23	29	30
Chinese	20	20	24	16	24
Any other ethnic group	15	19	17	24	28
Unclassified	227	92	157	107	79
All Pupils	7,950	7,687	7,440	7,489	7,480

\* 2009 results reflect Teacher Assessments

2009 Local Authority figures derived from the June 2009 Teacher Assessment collection. Historic Local Authority figures derived from DCSF data feeds.

Historic National Figures have been obtained from the DCSF Statistical First Release Tables.

Notes: Local Authority data for each year relates to all schools (including special schools). National data is based on all Maintained and Independent Schools.

# Key Stage Three Results 2005 - 2009 Gender Analysis: English and Reading Test

855 Leicestershire

## English

Boys	LA					National				
	2005	2006	2007	2008	2009*	2005	2006	2007	2008	2009*
5+	77 %	77 %	78 %	77 %	81 %	67 %	65 %	68 %	66 %	-
6+	36 %	34 %	33 %	35 %	39 %	28 %	27 %	25 %	26 %	-
7+	8 %	8 %	7 %	7 %	7 %	7 %	7 %	5 %	6 %	-
APS	33.9	33.7	33.7	33.6	34.1	32.7	32.4	32.3	32.1	-

Girls	LA					National				
	2005	2006	2007	2008	2009*	2005	2006	2007	2008	2009*
5+	89 %	89 %	87 %	88 %	91 %	81 %	80 %	81 %	80 %	-
6+	52 %	50 %	46 %	51 %	58 %	42 %	42 %	39 %	41 %	-
7+	14 %	14 %	13 %	14 %	13 %	12 %	13 %	10 %	11 %	-
APS	36.2	36.1	35.7	36.0	36.6	35.0	35.1	34.7	34.6	-

Gender Gap	LA					National				
	2005	2006	2007	2008	2009*	2005	2006	2007	2008	2009*
5+	-11 %	-12 %	-9 %	-11 %	-10 %	-14 %	-15 %	-13 %	-14 %	-
6+	-16 %	-17 %	-13 %	-16 %	-19 %	-14 %	-15 %	-14 %	-15 %	-
7+	-6 %	-6 %	-6 %	-7 %	-6 %	-5 %	-6 %	-5 %	-5 %	-
APS	-2.3	-2.4	-2.0	-2.3	-2.4	-2.3	-2.7	-2.4	-2.5	-

## Reading

Boys	LA					National				
	2005	2006	2007	2008	2009*	2005	2006	2007	2008	2009*
5+	72 %	71 %	75 %	73 %	79 %	61 %	59 %	65 %	62 %	-
6+	33 %	31 %	33 %	34 %	39 %	25 %	25 %	25 %	26 %	-
7+	8 %	7 %	9 %	9 %	9 %	6 %	7 %	6 %	7 %	-
APS	33.1	32.8	33.4	33.3	34.1	-	-	-	-	-

Girls	LA					National				
	2005	2006	2007	2008	2009*	2005	2006	2007	2008	2009*
5+	85 %	85 %	86 %	84 %	90 %	76 %	74 %	78 %	76 %	-
6+	50 %	48 %	46 %	51 %	57 %	40 %	40 %	39 %	41 %	-
7+	16 %	15 %	15 %	18 %	17 %	12 %	14 %	12 %	14 %	-
APS	35.8	35.6	35.6	35.8	36.6	-	-	-	-	-

Gender Gap	LA					National				
	2005	2006	2007	2008	2009*	2005	2006	2007	2008	2009*
5+	-13 %	-14 %	-10 %	-10 %	-10 %	-15 %	-15 %	-13 %	-14 %	-
6+	-17 %	-17 %	-13 %	-16 %	-17 %	-15 %	-15 %	-14 %	-15 %	-
7+	-8 %	-8 %	-6 %	-8 %	-8 %	-6 %	-7 %	-6 %	-7 %	-
APS	-2.7	-2.8	-2.1	-2.5	-2.5	-	-	-	-	-

 Gender gap less than national gender gap  Gender gap greater than national gender gap

\* 2009 results reflect Teacher Assessments

2009 Local Authority figures derived from the June 2009 Teacher Assessment collection. Historic Local Authority figures derived from DCSF data feeds.

Historic National Figures have been obtained from the DCSF Statistical First Release Tables.

Notes: Local Authority data for each year relates to all schools (including special schools). National data is based on all Maintained and Independent Schools.

## Key Stage Three Results 2005 - 2009 Gender Analysis: Writing and Maths Test

855 Leicestershire

### Writing

Boys	LA					National				
	2005	2006	2007	2008	2009*	2005	2006	2007	2008	2009*
5+	78 %	78 %	75 %	79 %	77 %	71 %	69 %	67 %	70 %	-
6+	38 %	35 %	32 %	37 %	35 %	32 %	30 %	27 %	30 %	-
7+	12 %	11 %	9 %	10 %	6 %	10 %	9 %	7 %	9 %	-
APS	34.4	34.1	33.6	34.0	33.5	-	-	-	-	-

Girls	LA					National				
	2005	2006	2007	2008	2009*	2005	2006	2007	2008	2009*
5+	90 %	90 %	85 %	90 %	89 %	82 %	83 %	80 %	83 %	-
6+	51 %	50 %	45 %	50 %	53 %	43 %	44 %	39 %	44 %	-
7+	16 %	16 %	14 %	16 %	11 %	14 %	14 %	11 %	14 %	-
APS	36.4	36.3	35.5	36.2	36.0	-	-	-	-	-

Gender Gap	LA					National				
	2005	2006	2007	2008	2009*	2005	2006	2007	2008	2009*
5+	-11 %	-11 %	-9 %	-11 %	-12 %	-11 %	-14 %	-13 %	-13 %	-
6+	-14 %	-15 %	-13 %	-13 %	-18 %	-11 %	-14 %	-12 %	-14 %	-
7+	-5 %	-5 %	-5 %	-6 %	-6 %	-4 %	-5 %	-4 %	-5 %	-
APS	-2.0	-2.2	-1.9	-2.1	-2.6	-	-	-	-	-

### Maths

Boys	LA					National				
	2005	2006	2007	2008	2009*	2005	2006	2007	2008	2009*
5+	83 %	85 %	84 %	84 %	86 %	73 %	76 %	75 %	76 %	-
6+	63 %	68 %	67 %	67 %	67 %	53 %	57 %	57 %	58 %	-
7+	32 %	38 %	37 %	38 %	39 %	26 %	31 %	30 %	32 %	-
APS	37.8	39.0	38.7	38.7	38.8	36.1	37.1	36.9	37.1	-

Girls	LA					National				
	2005	2006	2007	2008	2009*	2005	2006	2007	2008	2009*
5+	82 %	85 %	83 %	83 %	87 %	74 %	77 %	76 %	77 %	-
6+	61 %	67 %	64 %	64 %	66 %	53 %	57 %	55 %	56 %	-
7+	29 %	34 %	32 %	34 %	36 %	25 %	29 %	28 %	28 %	-
APS	37.3	38.5	38.0	38.1	38.5	36.0	37.0	36.7	36.7	-

Gender Gap	LA					National				
	2005	2006	2007	2008	2009*	2005	2006	2007	2008	2009*
5+	1 %	0 %	1 %	1 %	0 %	-1 %	-1 %	-1 %	-1 %	-
6+	1 %	1 %	3 %	3 %	1 %	0 %	0 %	2 %	2 %	-
7+	3 %	4 %	5 %	4 %	3 %	1 %	2 %	2 %	4 %	-
APS	0.5	0.5	0.6	0.6	0.3	0.1	0.1	0.2	0.4	-

 Gender gap less than national gender gap  Gender gap greater than national gender gap

\* 2009 results reflect Teacher Assessments

2009 Local Authority figures derived from the June 2009 Teacher Assessment collection. Historic Local Authority figures derived from DCSF data feeds.

Historic National Figures have been obtained from the DCSF Statistical First Release Tables.

Notes: Local Authority data for each year relates to all schools (including special schools). National data is based on all Maintained and Independent Schools.

# Key Stage Three Results 2005 - 2009 Gender Analysis: Science Test and ICT TA

855 Leicestershire

## Science

Boys	LA					National				
	2005	2006	2007	2008	2009*	2005	2006	2007	2008	2009*
5+	80 %	82 %	84 %	82 %	86 %	69 %	72 %	72 %	72 %	-
6+	49 %	52 %	53 %	53 %	56 %	38 %	41 %	40 %	42 %	-
7+	17 %	20 %	22 %	20 %	21 %	12 %	15 %	15 %	14 %	-
APS	35.6	36.1	36.3	36.1	36.6	33.7	34.2	34.2	34.3	-

Girls	LA					National				
	2005	2006	2007	2008	2009*	2005	2006	2007	2008	2009*
5+	80 %	84 %	83 %	81 %	88 %	70 %	73 %	73 %	71 %	-
6+	46 %	50 %	50 %	50 %	57 %	36 %	41 %	41 %	40 %	-
7+	13 %	18 %	20 %	18 %	20 %	11 %	14 %	15 %	13 %	-
APS	35.1	36.0	36.1	35.8	36.7	33.6	34.3	34.4	34.1	-

Gender Gap	LA					National				
	2005	2006	2007	2008	2009*	2005	2006	2007	2008	2009*
5+	1 %	-2 %	0 %	1 %	-1 %	-1 %	-1 %	-1 %	1 %	-
6+	3 %	1 %	3 %	3 %	-1 %	2 %	0 %	-1 %	2 %	-
7+	4 %	3 %	2 %	1 %	1 %	1 %	1 %	0 %	1 %	-
APS	0.5	0.1	0.2	0.3	-0.1	0.1	-0.1	-0.2	0.2	-

## ICT

Boys	LA					National				
	2005	2006	2007	2008	2009*	2005	2006	2007	2008	2009*
5+	69 %	75 %	79 %	81 %	84 %	-	-	-	73 %	-
6+	16 %	18 %	23 %	27 %	31 %	-	-	-	30 %	-
7+	1 %	1 %	2 %	3 %	3 %	-	-	-	5 %	-
APS	31.7	32.5	33.0	33.3	33.8	-	-	-	-	-

Girls	LA					National				
	2005	2006	2007	2008	2009*	2005	2006	2007	2008	2009*
5+	77 %	84 %	87 %	88 %	92 %	-	-	-	82 %	-
6+	18 %	24 %	30 %	37 %	42 %	-	-	-	38 %	-
7+	0 %	1 %	2 %	3 %	4 %	-	-	-	8 %	-
APS	32.5	33.5	34.0	34.4	35.2	-	-	-	-	-

Gender Gap	LA					National				
	2005	2006	2007	2008	2009*	2005	2006	2007	2008	2009*
5+	-8 %	-9 %	-7 %	-7 %	-8 %	-	-	-	-9 %	-
6+	-3 %	-6 %	-7 %	-10 %	-11 %	-	-	-	-8 %	-
7+	0 %	0 %	0 %	0 %	-1 %	-	-	-	-3 %	-
APS	-0.8	-1.0	-1.0	-1.2	-1.3	-	-	-	-	-

 Gender gap less than national gender gap  Gender gap greater than national gender gap

\* 2009 results reflect Teacher Assessments

2009 Local Authority figures derived from the June 2009 Teacher Assessment collection. Historic Local Authority figures derived from DCSF data feeds.

Historic National Figures have been obtained from the DCSF Statistical First Release Tables.

Notes: Local Authority data for each year relates to all schools (including special schools). National data is based on all Maintained and Independent Schools.

# Key Stage Three Results 2005 - 2009 Ethnicity Analysis: English

## 855 Leicestershire

### Percentage achieving Level 5+

Ethnicity	LA					National				
	2005	2006	2007	2008	2009*	2005	2006	2007	2008	2009*
White British	83 %	82 %	82 %	82 %	86 %	75 %	73 %	75 %	-	-
Irish	80 %	100 %	83 %	87 %	90 %	77 %	79 %	78 %	-	-
Irish Traveller	0 %	-	0 %	0 %	40 %	23 %	20 %	23 %	-	-
Gypsy/Roma	25 %	0 %	0 %	0 %	20 %	29 %	26 %	22 %	-	-
Other White background	83 %	85 %	78 %	79 %	86 %	72 %	70 %	67 %	-	-
Total White	83 %	82 %	82 %	82 %	86 %	74 %	73 %	75 %	-	-
White and Black Caribbean	75 %	73 %	85 %	74 %	85 %	68 %	69 %	71 %	-	-
White and Black African	71 %	100 %	71 %	50 %	90 %	73 %	72 %	75 %	-	-
White and Asian	87 %	89 %	82 %	92 %	90 %	81 %	80 %	82 %	-	-
Other Mixed background	78 %	89 %	83 %	79 %	92 %	77 %	75 %	78 %	-	-
Total Mixed	80 %	85 %	83 %	80 %	88 %	74 %	73 %	76 %	-	-
Indian	88 %	89 %	90 %	90 %	92 %	83 %	82 %	83 %	-	-
Pakistani	76 %	77 %	88 %	91 %	88 %	64 %	62 %	66 %	-	-
Bangladeshi	69 %	71 %	87 %	77 %	85 %	68 %	66 %	69 %	-	-
Any other Asian background	85 %	88 %	90 %	70 %	89 %	72 %	71 %	72 %	-	-
Total Asian	86 %	87 %	89 %	88 %	91 %	72 %	71 %	73 %	-	-
Black Caribbean	92 %	73 %	88 %	73 %	91 %	67 %	67 %	68 %	-	-
Black African	93 %	100 %	100 %	94 %	86 %	65 %	66 %	69 %	-	-
Any other Black background	100 %	100 %	50 %	50 %	80 %	67 %	66 %	67 %	-	-
Total Black	93 %	84 %	83 %	83 %	87 %	66 %	66 %	68 %	-	-
Chinese	80 %	85 %	96 %	81 %	71 %	82 %	80 %	82 %	-	-
Any other ethnic group	73 %	79 %	82 %	75 %	68 %	64 %	63 %	64 %	-	-
Unclassified	77 %	73 %	87 %	84 %	86 %	71 %	66 %	68 %	-	-
All Pupils	83 %	83 %	82 %	82 %	86 %	74 %	73 %	74 %	73 %	-

Greater than national average.

Less than national average.

### Differences

Ethnicity	LA vs. National				
	2005	2006	2007	2008	2009*
White British	8 %	9 %	7 %	-	-
Irish	3 %	21 %	5 %	-	-
Irish Traveller	-23 %	-	-23 %	-	-
Gypsy/Roma	-4 %	-26 %	-22 %	-	-
Other White background	11 %	15 %	11 %	-	-
Total White	9 %	9 %	7 %	-	-
White and Black Caribbean	7 %	4 %	14 %	-	-
White and Black African	-2 %	28 %	-4 %	-	-
White and Asian	6 %	9 %	0 %	-	-
Other Mixed background	1 %	14 %	5 %	-	-
Total Mixed	6 %	12 %	7 %	-	-
Indian	5 %	7 %	7 %	-	-
Pakistani	12 %	15 %	22 %	-	-
Bangladeshi	1 %	5 %	18 %	-	-
Any other Asian background	13 %	17 %	18 %	-	-
Total Asian	14 %	16 %	16 %	-	-
Black Caribbean	25 %	6 %	20 %	-	-
Black African	28 %	34 %	31 %	-	-
Any other Black background	33 %	34 %	-17 %	-	-
Total Black	27 %	18 %	15 %	-	-
Chinese	-2 %	5 %	14 %	-	-
Any other ethnic group	9 %	16 %	18 %	-	-
Unclassified	6 %	7 %	19 %	-	-
All Pupils	9 %	10 %	8 %	9 %	-

Greater than Comparator figure

Less than Comparator figure

\* 2009 results reflect Teacher Assessments

2009 Local Authority figures derived from the June 2009 Teacher Assessment collection. Historic Local Authority figures derived from DCSF data feeds.

Historic National Figures have been obtained from the DCSF Statistical First Release Tables.

Notes: Local Authority data for each year relates to all schools (including special schools). National data is based on all Maintained and Independent Schools.

# Key Stage Three Results 2005 - 2009 Ethnicity Analysis: Maths

855 Leicestershire

## Percentage achieving Level 5+

Ethnicity	LA					National				
	2005	2006	2007	2008	2009*	2005	2006	2007	2008	2009*
White British	82 %	85 %	83 %	83 %	86 %	75 %	78 %	77 %	-	-
Irish	73 %	100 %	75 %	80 %	90 %	74 %	81 %	78 %	-	-
Irish Traveller	0 %	-	0 %	0 %	40 %	22 %	23 %	25 %	-	-
Gypsy/Roma	25 %	33 %	50 %	0 %	20 %	27 %	31 %	25 %	-	-
Other White background	81 %	87 %	78 %	88 %	92 %	73 %	76 %	72 %	-	-
Total White	82 %	85 %	83 %	83 %	86 %	75 %	78 %	76 %	-	-
White and Black Caribbean	73 %	80 %	82 %	72 %	85 %	65 %	70 %	70 %	-	-
White and Black African	86 %	100 %	71 %	57 %	100 %	70 %	73 %	73 %	-	-
White and Asian	85 %	87 %	82 %	90 %	93 %	80 %	82 %	82 %	-	-
Other Mixed background	80 %	89 %	87 %	82 %	95 %	74 %	77 %	76 %	-	-
Total Mixed	80 %	87 %	83 %	79 %	90 %	71 %	75 %	74 %	-	-
Indian	89 %	89 %	90 %	92 %	92 %	82 %	85 %	84 %	-	-
Pakistani	84 %	77 %	92 %	82 %	100 %	61 %	66 %	65 %	-	-
Bangladeshi	65 %	87 %	87 %	73 %	77 %	64 %	69 %	68 %	-	-
Any other Asian background	94 %	88 %	90 %	85 %	91 %	75 %	78 %	78 %	-	-
Total Asian	88 %	88 %	90 %	89 %	91 %	71 %	74 %	73 %	-	-
Black Caribbean	92 %	82 %	75 %	64 %	91 %	60 %	64 %	65 %	-	-
Black African	73 %	100 %	90 %	94 %	86 %	61 %	66 %	67 %	-	-
Any other Black background	0 %	80 %	50 %	100 %	80 %	62 %	67 %	66 %	-	-
Total Black	79 %	84 %	74 %	83 %	87 %	61 %	65 %	66 %	-	-
Chinese	100 %	90 %	100 %	94 %	92 %	93 %	92 %	93 %	-	-
Any other ethnic group	80 %	79 %	88 %	92 %	75 %	67 %	71 %	70 %	-	-
Unclassified	81 %	78 %	89 %	89 %	86 %	74 %	70 %	70 %	-	-
All Pupils	82 %	85 %	84 %	84 %	87 %	74 %	77 %	76 %	77 %	-

■ Greater than national average.

■ Less than national average.

## Differences

Ethnicity	LA vs. National				
	2005	2006	2007	2008	2009*
White British	7 %	7 %	6 %	-	-
Irish	-1 %	19 %	-3 %	-	-
Irish Traveller	-22 %	-	-25 %	-	-
Gypsy/Roma	-2 %	2 %	25 %	-	-
Other White background	8 %	11 %	6 %	-	-
Total White	7 %	7 %	7 %	-	-
White and Black Caribbean	8 %	10 %	12 %	-	-
White and Black African	16 %	27 %	-2 %	-	-
White and Asian	5 %	5 %	0 %	-	-
Other Mixed background	6 %	12 %	11 %	-	-
Total Mixed	9 %	12 %	9 %	-	-
Indian	7 %	4 %	6 %	-	-
Pakistani	23 %	11 %	27 %	-	-
Bangladeshi	1 %	18 %	19 %	-	-
Any other Asian background	19 %	10 %	12 %	-	-
Total Asian	17 %	14 %	17 %	-	-
Black Caribbean	32 %	18 %	10 %	-	-
Black African	12 %	34 %	23 %	-	-
Any other Black background	-62 %	13 %	-16 %	-	-
Total Black	18 %	19 %	8 %	-	-
Chinese	7 %	-2 %	7 %	-	-
Any other ethnic group	13 %	8 %	18 %	-	-
Unclassified	7 %	8 %	19 %	-	-
All Pupils	8 %	8 %	8 %	7 %	-

■ Greater than Comparator figure

■ Less than Comparator figure

\* 2009 results reflect Teacher Assessments

2009 Local Authority figures derived from the June 2009 Teacher Assessment collection. Historic Local Authority figures derived from DCSF data feeds.

Historic National Figures have been obtained from the DCSF Statistical First Release Tables.

Notes: Local Authority data for each year relates to all schools (including special schools). National data is based on all Maintained and Independent Schools.

# Key Stage Three Results 2005 - 2009 Ethnicity Analysis: Science

855 Leicestershire

## Percentage achieving Level 5+

Ethnicity	LA					National				
	2005	2006	2007	2008	2009*	2005	2006	2007	2008	2009*
White British	80 %	83 %	83 %	82 %	87 %	71 %	74 %	74 %	-	-
Irish	73 %	95 %	67 %	87 %	90 %	71 %	78 %	76 %	-	-
Irish Traveller	100 %	-	0 %	0 %	60 %	18 %	17 %	25 %	-	-
Gypsy/Roma	25 %	33 %	100 %	0 %	0 %	23 %	28 %	24 %	-	-
Other White background	79 %	87 %	74 %	74 %	88 %	66 %	67 %	65 %	-	-
Total White	80 %	83 %	83 %	81 %	87 %	71 %	74 %	74 %	-	-
White and Black Caribbean	69 %	76 %	85 %	78 %	88 %	61 %	66 %	66 %	-	-
White and Black African	71 %	100 %	64 %	50 %	100 %	64 %	69 %	71 %	-	-
White and Asian	83 %	84 %	85 %	86 %	90 %	76 %	77 %	79 %	-	-
Other Mixed background	75 %	89 %	81 %	80 %	84 %	70 %	73 %	74 %	-	-
Total Mixed	75 %	84 %	83 %	80 %	88 %	67 %	71 %	72 %	-	-
Indian	82 %	86 %	86 %	86 %	91 %	74 %	78 %	79 %	-	-
Pakistani	68 %	62 %	92 %	82 %	92 %	50 %	54 %	57 %	-	-
Bangladeshi	58 %	58 %	71 %	63 %	87 %	53 %	57 %	60 %	-	-
Any other Asian background	94 %	88 %	86 %	74 %	84 %	65 %	67 %	71 %	-	-
Total Asian	81 %	83 %	85 %	83 %	90 %	61 %	64 %	67 %	-	-
Black Caribbean	85 %	73 %	88 %	64 %	91 %	54 %	58 %	61 %	-	-
Black African	67 %	100 %	90 %	88 %	93 %	52 %	56 %	61 %	-	-
Any other Black background	100 %	100 %	50 %	50 %	80 %	55 %	60 %	60 %	-	-
Total Black	76 %	84 %	78 %	76 %	90 %	53 %	58 %	61 %	-	-
Chinese	90 %	85 %	96 %	88 %	83 %	81 %	81 %	85 %	-	-
Any other ethnic group	80 %	74 %	76 %	67 %	61 %	57 %	60 %	61 %	-	-
Unclassified	76 %	79 %	86 %	86 %	87 %	69 %	65 %	65 %	-	-
All Pupils	80 %	83 %	83 %	82 %	87 %	70 %	72 %	73 %	71 %	-

■ Greater than national average.

■ Less than national average.

## Differences

Ethnicity	LA vs. National				
	2005	2006	2007	2008	2009*
White British	9 %	9 %	9 %	-	-
Irish	2 %	17 %	-9 %	-	-
Irish Traveller	82 %	-	-25 %	-	-
Gypsy/Roma	2 %	5 %	76 %	-	-
Other White background	13 %	20 %	9 %	-	-
Total White	9 %	9 %	9 %	-	-
White and Black Caribbean	8 %	10 %	19 %	-	-
White and Black African	7 %	31 %	-7 %	-	-
White and Asian	7 %	7 %	6 %	-	-
Other Mixed background	5 %	16 %	7 %	-	-
Total Mixed	8 %	13 %	11 %	-	-
Indian	8 %	8 %	7 %	-	-
Pakistani	18 %	8 %	35 %	-	-
Bangladeshi	5 %	1 %	11 %	-	-
Any other Asian background	29 %	21 %	15 %	-	-
Total Asian	20 %	19 %	18 %	-	-
Black Caribbean	31 %	15 %	27 %	-	-
Black African	15 %	44 %	29 %	-	-
Any other Black background	45 %	40 %	-10 %	-	-
Total Black	23 %	26 %	17 %	-	-
Chinese	9 %	4 %	11 %	-	-
Any other ethnic group	23 %	14 %	15 %	-	-
Unclassified	7 %	14 %	21 %	-	-
All Pupils	10 %	11 %	10 %	11 %	-

■ Greater than Comparator figure

■ Less than Comparator figure

\* 2009 results reflect Teacher Assessments

2009 Local Authority figures derived from the June 2009 Teacher Assessment collection. Historic Local Authority figures derived from DCSF data feeds.

Historic National Figures have been obtained from the DCSF Statistical First Release Tables.

Notes: Local Authority data for each year relates to all schools (including special schools). National data is based on all Maintained and Independent Schools.

## Key Stage Three Results 2005 - 2009

855 Leicestershire

### English Test Level 5+

	LA				
	2005	2006	2007	2008	2009*
Actual	83 %	83 %	82 %	82 %	86 %
Target	79 %	82 %	84 %	86 %	85 %
FFT B Estimate	80 %	79 %	79 %	79 %	79 %
FFT D Estimate	82 %	85 %	84 %	84 %	84 %

### English Test Level 6+

	LA				
	2005	2006	2007	2008	2009*
Actual	44 %	42 %	39 %	42 %	48 %
Target	-	-	-	-	-
FFT B Estimate	38 %	37 %	37 %	38 %	39 %
FFT D Estimate	48 %	48 %	44 %	45 %	48 %

### Maths Test Level 5+

	LA				
	2005	2006	2007	2008	2009*
Actual	82 %	85 %	84 %	84 %	87 %
Target	82 %	83 %	83 %	84 %	87 %
FFT B Estimate	79 %	82 %	82 %	83 %	80 %
FFT D Estimate	81 %	82 %	85 %	85 %	83 %

### Maths Test Level 6+

	LA				
	2005	2006	2007	2008	2009*
Actual	62 %	67 %	65 %	65 %	67 %
Target	-	-	-	-	-
FFT B Estimate	58 %	62 %	63 %	63 %	62 %
FFT D Estimate	62 %	62 %	67 %	67 %	66 %

Actual above target/Estimate

Actual below target/Estimate

\* 2009 results reflect Teacher Assessments

Note: School Targets based on SaLTS submissions