

Office of the Deputy Prime Minister
Indices of Deprivation 2004
Key Findings in Charnwood

January 2005



Report Produced by Research & Information Team
Chief Executives Department
Leicestershire County Council



CONTENTS

Contents

	Page
Introduction	2
District Summary	3
Geography	4
Local Data	6
Index of Multiple Deprivation	8
Income Deprivation	10
Income Deprivation Affecting Children	12
Income Deprivation Affecting Older People	14
Employment Deprivation	16
Health Deprivation and Disability	18
Education, Skills and Training Deprivation	20
Barriers to Housing and Services	22
Living Environment	24
Crime Deprivation	26
Appendix 1	28

INTRODUCTION

Introduction

The Indices of Deprivation 2004 are produced by the Office of the Deputy Prime Minister (ODPM). They are an attempt to measure deprivation in a consistent way for small areas across England. They were first developed in the mid 1990's using data from the 1991 Census. Since then the Indices have been revised several times using updated data and new indicators to reflect change. They have been widely used to target regeneration resources through the regional allocation of the SRB Challenge Fund.

In recent years with the release of the Indices of Deprivation (ID2000) in July 2000, use of the Indices has become more widespread. Both central and local government places a lot of value on the Indices and the Audit Commission uses it as one measure for the Quality of Life Indicators.

Indices of Deprivation 2004

The Indices of Deprivation 2004 (ID2004) were released in May 2004. The ID2004 are based on the approach, structure and methodology that was used to create the previous Indices of Deprivation 2000. The ID2004 updates the ID2000 in two key ways:

- more up-to-date data has been used (mostly 2001 data), and
- new measures have been incorporated as new and improved data sources have become available.

These changes however mean that the two indices cannot be directly compared. In addition many ward boundaries have changed since the release of the 2000 data meaning that straightforward comparisons cannot be made. Therefore change over time cannot be identified.

This Report

This report presents the results of the Indices of Deprivation 2004 in Charnwood borough.

It considers the summary measures used to score and rank the borough in relation to other Local Authority Districts in England.

It also includes details of different aspects of deprivation affecting smaller areas within the borough. A series of maps are included and illustrate where the relatively higher levels of deprivation are located.

Leicestershire County Report

A report considering the Indices of Deprivation 2004 in more detail across all districts in Leicestershire has also been produced. It is available to download at www.leics.gov.uk/statistics, or by using the contact details below.

Further Information

Further information is available from www.odpm.gov.uk

If you require further guidance, please contact:

Sarah Geddes
Research & Information Team
Chief Executives Department
Leicestershire County Council

E: sgeddes@leics.gov.uk

T: 0116 265 8262

SUMMARY

Charnwood Borough Summary

ODPM uses six summary measures to rank district authorities in England. The most commonly used measure is the Rank of Average Rank which measures the average levels of deprivation across the borough. This shows that Charnwood borough is ranked 262nd out of the 354 district authorities in England, where 1=most deprived and 354=least deprived. Table 1 below shows that North West Leicestershire is ranked as more deprived in Leicestershire.

Table 1: Comparison with other districts in Leicestershire

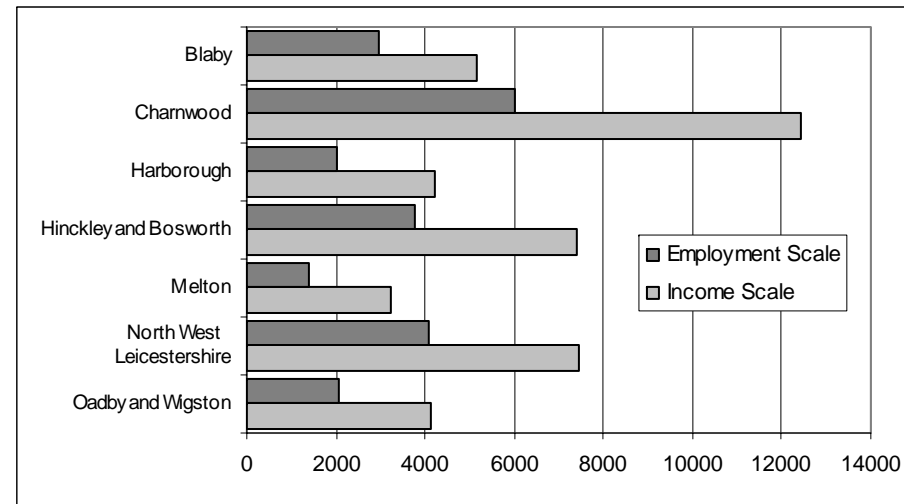
District	Rank of average rank
North West Leicestershire	195
Charnwood	262
Hinckley and Bosworth	275
Melton	293
Oadby and Wigston	304
Blaby	316
Harborough	336

Other measures which are used to rank district authorities include the Rank of Local Concentration. This measures the severity of multiple deprivation in each authority, measuring 'hot spots' of deprivation. Charnwood is ranked 223rd in England showing that the borough experiences relatively low levels of deprivation.

The districts are also ranked on an Income and Employment Scale. This measures the number of people who are considered to be either income or employment deprived in each district.

The graph below shows that 12,411 people are income deprived and 6,011 people are employment deprived in Charnwood.

Graph 1: Number of people who are income or employment deprived by district



The examination of Super Output Area data in each domain highlights the locations where deprivation is concentrated in the borough.

GEOGRAPHY

Indices of Deprivation: Geography

For the first time, the Indices of Deprivation 2004 have been released at Super Output Area (SOA) lower level – where previous Indices were released at ward level.

Super Output Areas are a new national geography created by the Office for National Statistics. They are created by combining a number of Output Areas which were created for the 2001 Census.

Super Output Areas are small areas of broadly consistent population size across the country, each containing approximately 1,500 people.

The use of Super Output Areas (lower level) as a basis for the Indices enables smaller, sub-ward areas of deprivation to be identified. Such areas may previously have been hidden / masked by the use of ward level data.

Charnwood borough contains 100 Super Output Areas.

Table 2: Number of SOAs by area

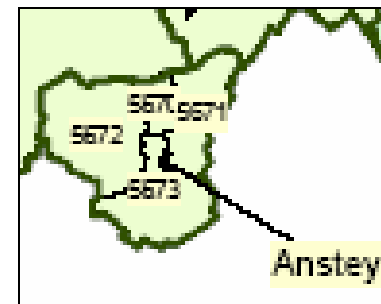
	Number of SOAs
England	32,482
Leicestershire	396
Charnwood Borough	100

In all cases, a ranking of 1 signifies the most deprived area. In respect of the national ranking which is given in each of the following tables, a ranking between 1 and 3,248 denotes that the area is ranked within the 10% most deprived in England, and a ranking between 1 and 6,496 denotes that the area is ranked within the 20% most deprived in England.

Map 1 on page 5 shows the location of each of the Super Output Areas in Charnwood borough. Each Super Output Area is identified by a nine digit code, eg. E0102**5678**. For ease of use, Map 1 lists only the last four digits.

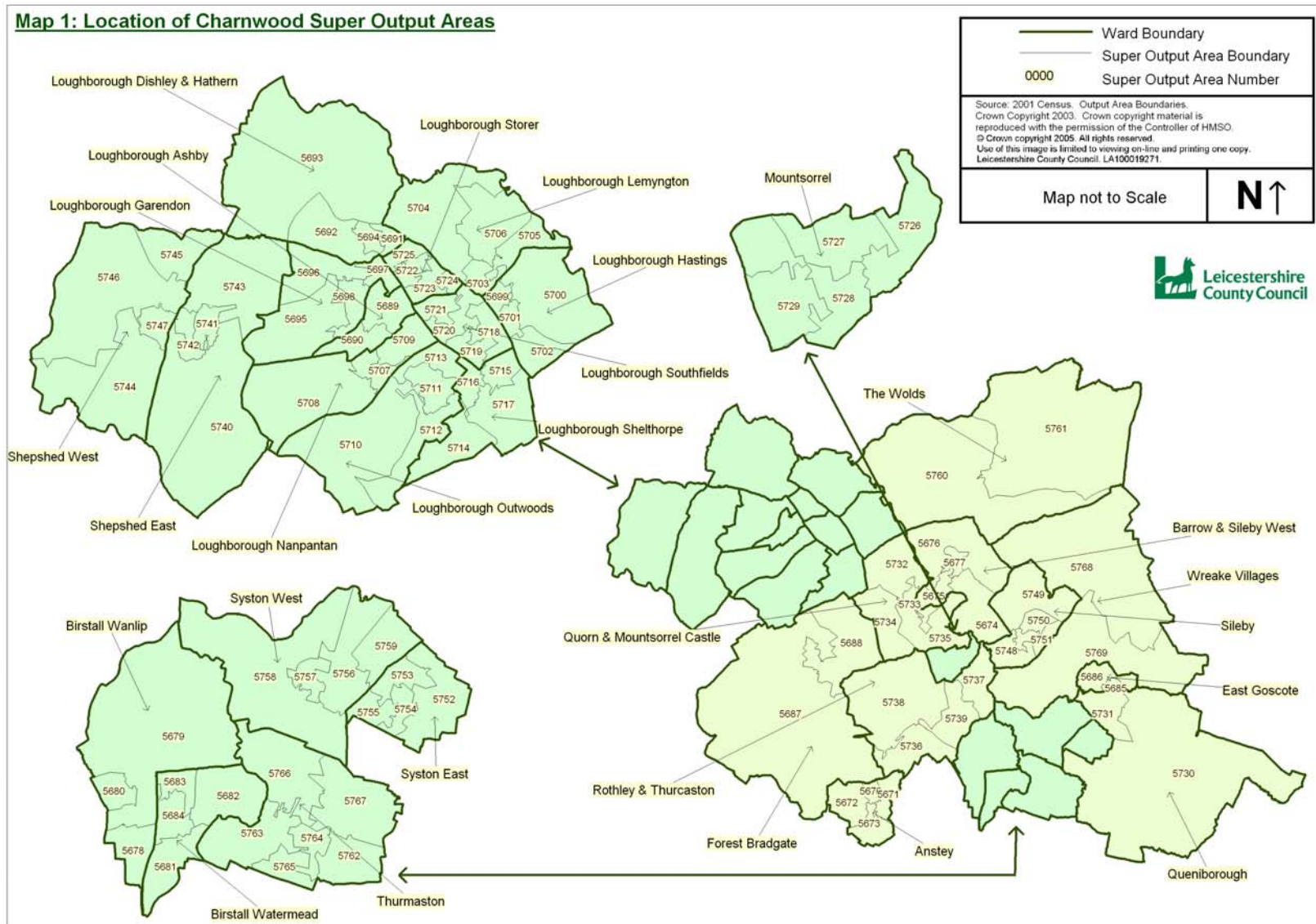
The picture below shows how a number of Super Output Areas (normally between two and five) are located within ward boundaries, so for example Anstey ward contains four SOAs – 5670, 5671, 5672 and 5673.

Picture 1: Extract of Map 1 showing SOAs within ward boundaries



For information, this report also contains the ward in which each SOA is located. However, where a ward name is given, users should be aware that it relates only to part of the ward, and not necessarily the entire ward.

MAP 1: LOCATION OF SOAS



LOCAL DATA

LOCAL DATA

Local data

The Index of Multiple Deprivation 2004 (IMD2004) combines indicators across seven domains into a single deprivation score and rank for each Super Output Area. The domains are shown below:

- Income Deprivation
- Employment Deprivation
- Health Deprivation and Disability
- Education, Skills and Training Deprivation
- Barriers to Housing and Services
- Living Environment Deprivation
- Crime

There are also two supplementary domains which measure income deprivation affecting children (IDAC) and income deprivation affecting older people (IDAOP).

These domains are given the following weighting when calculating the overall Index of Multiple Deprivation:

	Weighting
Income Deprivation	22.5%
Employment Deprivation	22.5%
Health Deprivation and Disability	13.5%
Education, Skills and Training Deprivation	13.5%
Barriers to Housing and Services	9.3%
Living Environment Deprivation	9.3%
Crime	9.3%

The following sections consider the relative levels of deprivation experienced in each domain in Charnwood.

Information on the indicators used to compile each domain is listed along with a table showing the ten most deprived SOAs in the borough in each domain.

For comparison, some tables also include the ranking in Leicestershire (where 1=most deprived, 396=least deprived) and in England (where 1=most deprived, 32,482=least deprived).

Each section also includes a graph which shows the number of Super Output Areas in each domain and how they are ranked within England. This gives a visual representation of the spread of relative deprivation in each domain in the borough, showing how many areas are in the 10% most deprived and 10% least deprived in England.

This information is accompanied by Maps 2 to 11 which show the location of the most deprived areas in each domain in the borough. The 10% most deprived and 10% least deprived areas in Charnwood are highlighted on the maps.

A comprehensive list of national ranks for each Super Output Area in each domain is included in appendix 1.

INDEX OF MULTIPLE DEPRIVATION

Indicators

The Index of Multiple Deprivation combines the indicators across the seven domains (listed below) into a single deprivation score and rank for each Super Output Area

- Income
- Employment
- Health & Disability
- Education & Skills
- Barriers to Housing & Services
- Living Environment
- Crime

Commentary

The Index of Multiple Deprivation considers all aspects of deprivation experienced by particular areas. Overall levels of deprivation in Charnwood are low, with no Super Output Areas ranked within the 10% most deprived in England and the majority of Super Output Areas (more than 80) ranked in the 50% least deprived in England.

However some of the highest levels of deprivation in the county are found in parts of Charnwood. There are three Super Output Areas ranked in the 20% most deprived in England, part of Loughborough Hastings, Loughborough Storer and Loughborough Shelthorpe wards. These areas are also ranked as 1st, 4th and 5th most deprived Super Output Areas in the county respectively.

The areas experiencing highest levels of deprivation are shown on Map 2 and are all located in Loughborough.

Graph 2: Spread of National Ranking of all SOAs in Charnwood

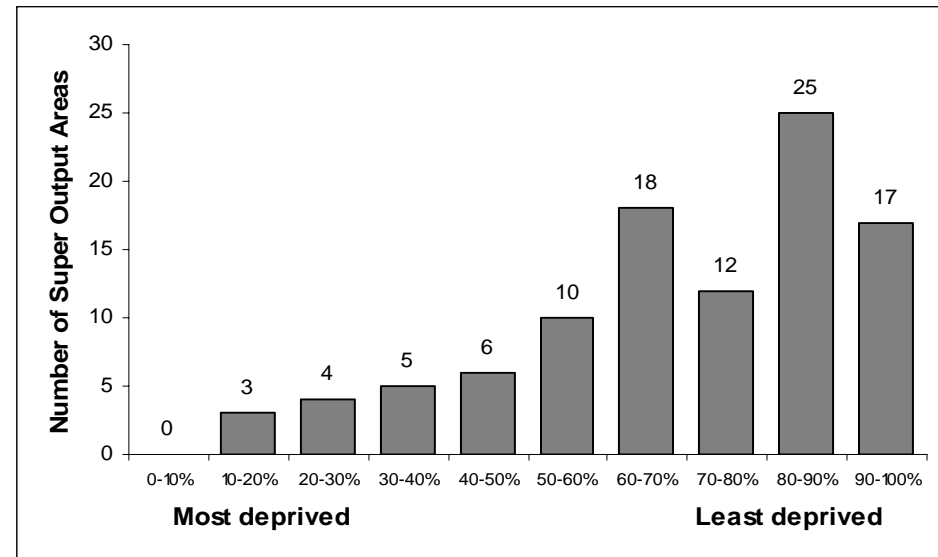
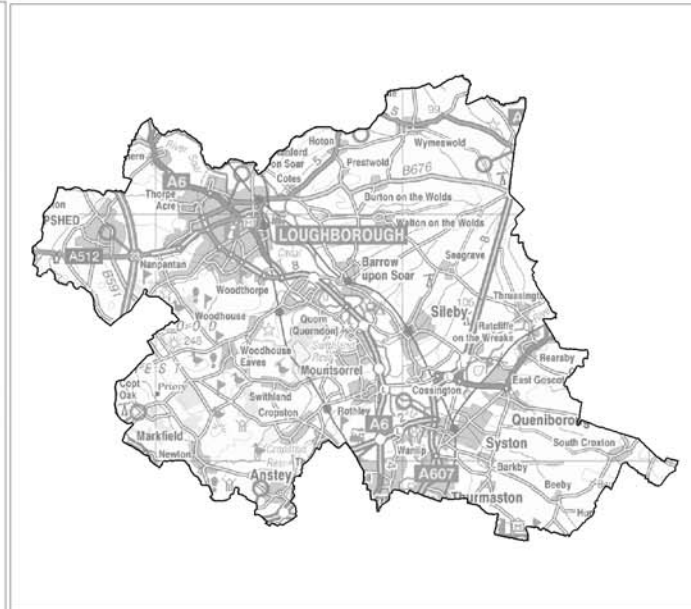
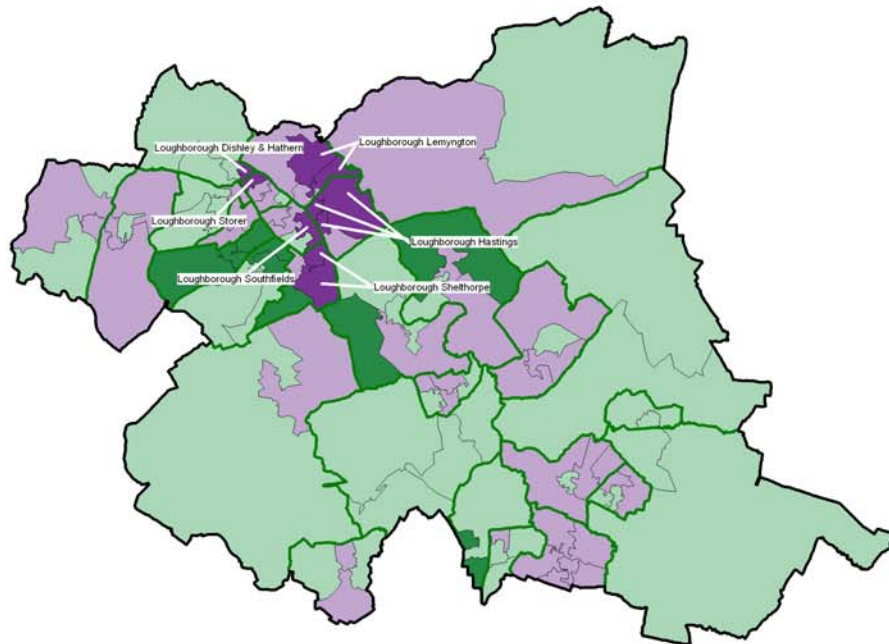


Table 3: Ten most deprived areas in Charnwood

SOA	Ward	Score	District Rank	County Rank	National Rank
E01025699	Loughborough Hastings	44.78	1	1	3,344
E01025725	Loughborough Storer	38.51	2	4	5,056
E01025717	Loughborough Shelthorpe	37.99	3	5	5,232
E01025700	Loughborough Hastings	31.81	4	6	7,402
E01025718	Loughborough Southfields	28.83	5	9	8,657
E01025706	Loughborough Lemyngton	28.24	6	11	8,941
E01025701	Loughborough Hastings	27.92	7	12	9,074
E01025705	Loughborough Lemyngton	26.25	8	16	9,946
E01025715	Loughborough Shelthorpe	23.45	9	25	11,441
E01025691	Loughborough Dishley	23.14	10	28	11,639

MAP 2: INDEX OF MULTIPLE DEPRIVATION

Map 2
Index of Multiple Deprivation
 highlighting the 10% most deprived Super Output Areas in Charnwood



Levels of Multiple Deprivation in Charnwood
 (Number of Super Output Areas)

- Top 10% - Most Deprived
- From 10% to 50%
- From 50% to 90%
- Bottom 10% - Least Deprived

10% Most Deprived
Charnwood Super Output Areas

SOA Code	Ward
1. 5699	Loughborough Hastings
2. 5725	Loughborough Storer
3. 5717	Loughborough Shelthorpe
4. 5700	Loughborough Hastings
5. 5718	Loughborough Southfields
6. 5706	Loughborough Lemyngton
7. 5701	Loughborough Hastings
8. 5705	Loughborough Lemyngton
9. 5715	Loughborough Shelthorpe
10.5691	Loughborough Dishley & Hathern

- District Boundary
- Electoral Ward Boundaries
- Super Output Areas

Source: 2001 Census, Output Area Boundaries
 Crown copyright 2003. Crown copyright material
 is reproduced with the permission of the Controller
 of HMSO

© Crown copyright 2005. All rights reserved.
 Use of this image is limited to viewing on line and printing one copy.
 Leicestershire County Council LA100019211

Produced by R&I Team: Chief Executives
 Leicestershire County Council

Source: Office for Deputy Prime Minister 2004

Each Super Output Area has an average of about 1,500 people

INCOME DEPRIVATION

Indicators

The income deprivation domain measures the proportion of the population living below 60% of median income. A number of indicators are used to compile this domain. These include:

- Adults and children in Income Support households
- Adults and children in Income Based Job Seekers Allowance households
- Adults and children in Working Family Tax Credit households
- Adults and children in Disabled Persons Tax Credit households
- Supported asylum seekers in receipt of subsistence only and accommodation support

Commentary

In Charnwood there are **12,411 people** who are considered to be income deprived. Graph 3 shows the spread of rankings for all Super Output Areas in the borough. It shows that more than three quarters of the Super Output Areas in the borough are ranked in the 50% least deprived in England. However, one area is ranked within the 10% most deprived in England (part of Loughborough Shelthorpe ward), and four are ranked within the 20% most deprived (part of Loughborough Hastings and Loughborough Storer wards).

In this domain, the score indicates the proportion of the total population who are considered to be income deprived. Table 4 lists the number of people in the most deprived areas who are income deprived. It shows that over a third of people who are income deprived in Charnwood live in the ten most deprived SOAs.

Map 3 shows the most deprived areas in the borough.

Graph 3: Spread of National Ranking of all SOAs in Charnwood

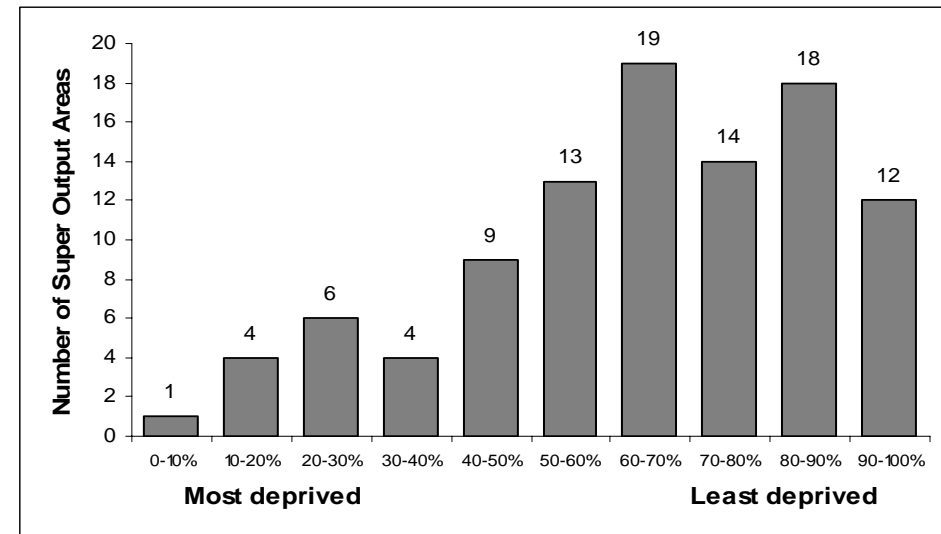
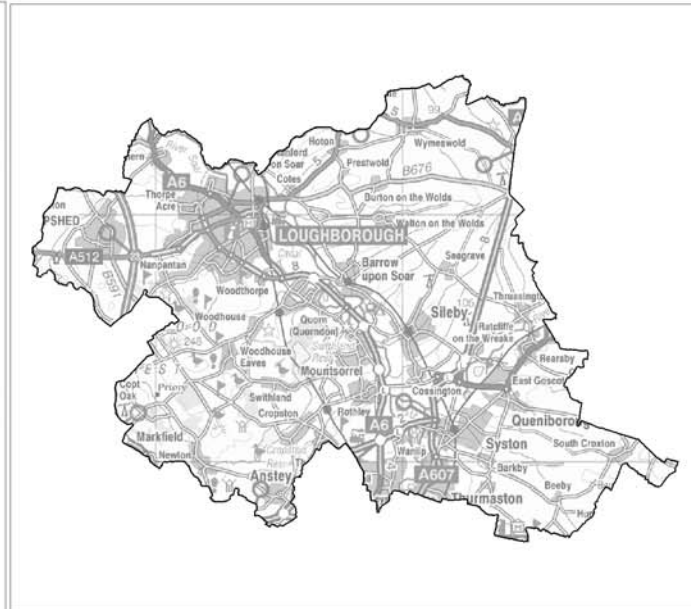
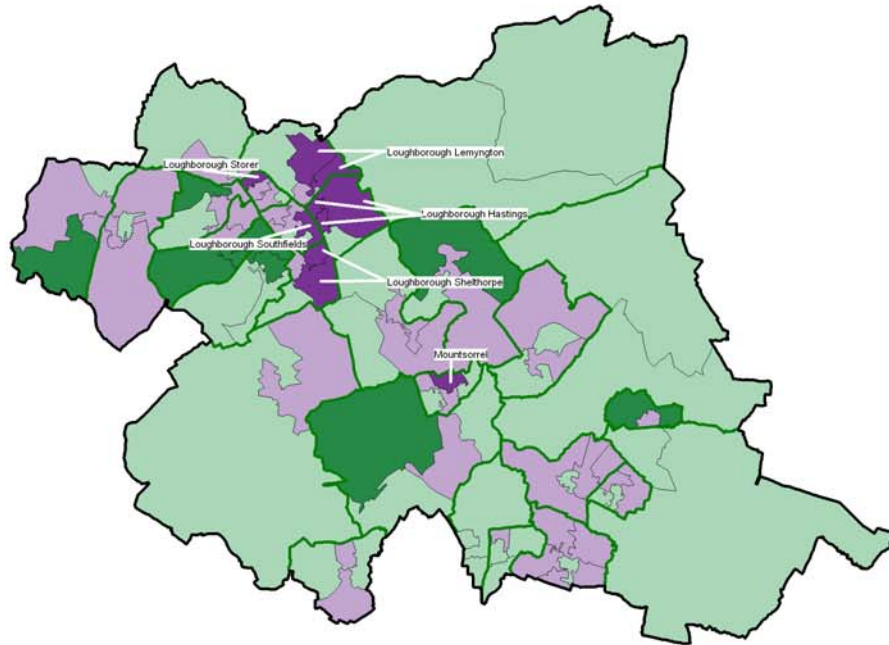


Table 4: Ten most deprived areas in Charnwood

SOA	Ward	Score	Total pop	Number income deprived	National Rank
E01025717	Loughborough Shelthorpe	0.35	1,610	564	2,280
E01025699	Loughborough Hastings	0.30	1,368	410	3,634
E01025700	Loughborough Hastings	0.28	1,424	399	4,144
E01025725	Loughborough Storer	0.28	1,303	365	4,154
E01025701	Loughborough Hastings	0.24	1,415	340	6,019
E01025706	Loughborough Lemington	0.21	1,429	300	7,159
E01025718	Loughborough Southfields	0.19	1,030	196	8,192
E01025727	Mountsorrel	0.19	1,594	303	8,313
E01025705	Loughborough Lemington	0.19	1,274	242	8,398
E01025715	Loughborough Shelthorpe	0.19	1,623	308	8,595

MAP 3: INCOME DEPRIVATION

Map 3
Income Deprivation
 highlighting the 10% most deprived Super Output Areas in Charnwood



Levels of Income Deprivation in Charnwood
 (Number of Super Output Areas)

- Top 10% - Most Deprived
- From 10% to 50%
- From 50% to 90%
- Bottom 10% - Least Deprived

10% Most Deprived
Charnwood Super Output Areas

SOA Code	Ward
1. 5717	Loughborough Shelthorpe
2. 5699	Loughborough Hastings
3. 5700	Loughborough Hastings
4. 5725	Loughborough Storer
5. 5701	Loughborough Hastings
6. 5706	Loughborough Lemington
7. 5718	Loughborough Southfields
8. 5727	Mountsorrel
9. 5705	Loughborough Lemington
10.5715	Loughborough Shelthorpe

- District Boundary
- Electoral Ward Boundaries
- Super Output Areas

Source: 2001 Census, Output Area Boundaries. Crown copyright 2003. Crown copyright material is reproduced with the permission of the Controller of HMSO.

© Crown copyright 2005. All rights reserved. Use of this image is limited to showing on-line and printing one copy. Leicestershire County Council: LA150018718

Produced by R&I Team, Chief Executives, Leicestershire County Council

Source: Office for Deputy Prime Minister 2004

Each Super Output Area has an average of about 1,500 people

INCOME DEPRIVATION AFFECTING CHILDREN

Indicators

This is a supplementary indicator that measures the proportion of children under 16 in an area who live in income deprived households.

Commentary

Overall, there are 3,539 children in Charnwood living in households which are considered to be income deprived. This accounts for 12.1% of the children in the borough aged under 16 years.

Of the 12,411 people who are income deprived in Charnwood, 28.6% are aged 16 or under.

Map 4 shows the locations of the Super Output Areas that are ranked as most deprived in the borough. There is one Super Output Area, part of Loughborough Shelthorpe ward which is ranked in the 10% most deprived in England. Over half of the children in this area live in income deprived households.

There are a further four areas which are within the 20% most deprived in England, part of Loughborough Storer ward and three Super Output Areas within Loughborough Hastings ward.

The wards with the highest numbers of children living in households which are income deprived are Loughborough Shelthorpe (499 children), Loughborough Hastings (361 children) and Loughborough Ashby (269 children).

Graph 4: Spread of National Ranking of all SOAs in Charnwood

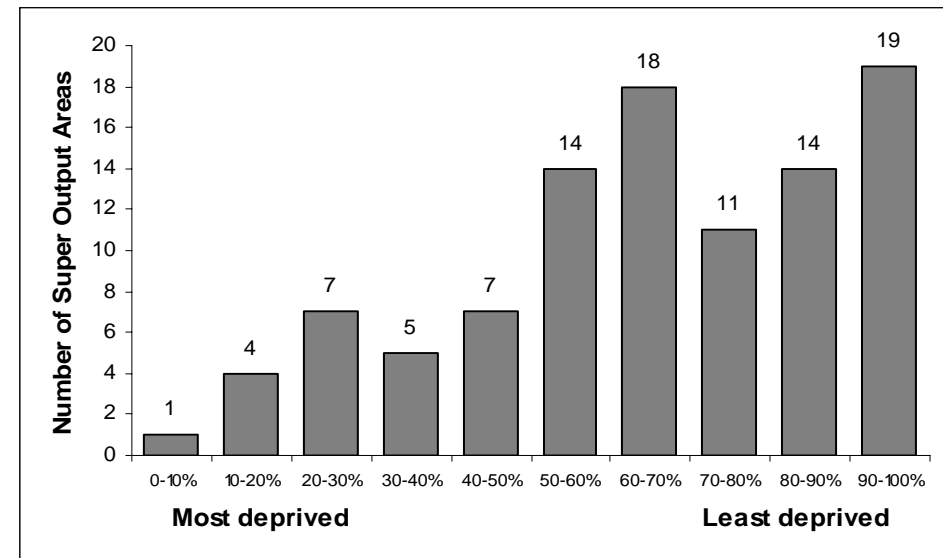
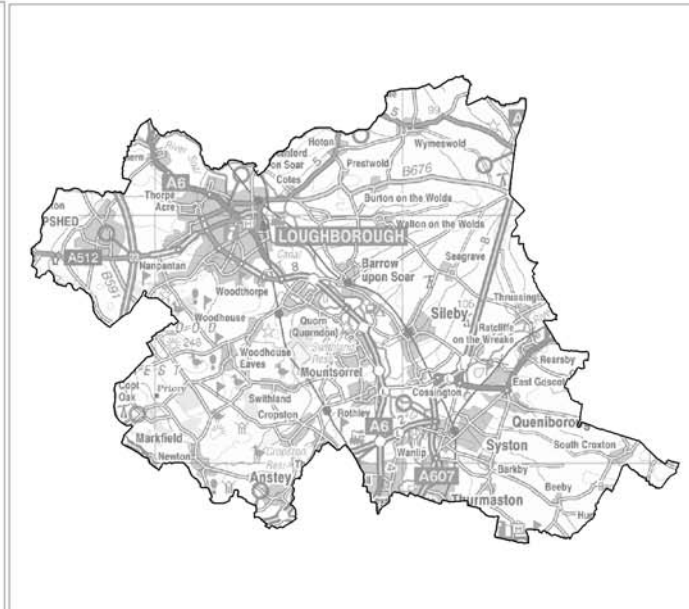
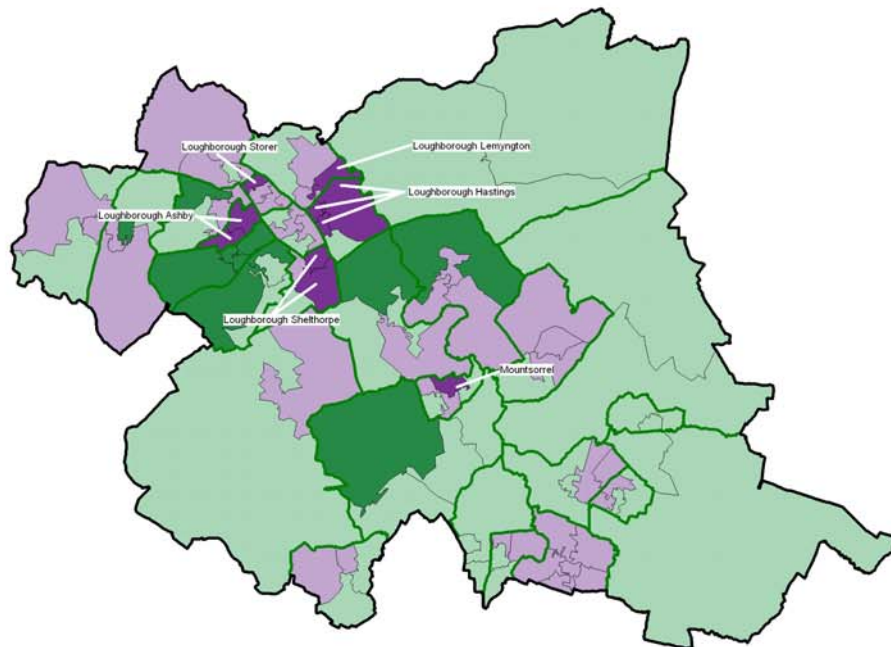


Table 5: Ten most deprived areas in Charnwood

SOA	Ward	Score	Total <16yrs	Number deprived	National Rank
E01025717	Loughborough Shelthorpe	0.52	529	277	1,888
E01025725	Loughborough Storer	0.43	291	127	3,755
E01025700	Loughborough Hastings	0.42	407	173	4,026
E01025699	Loughborough Hastings	0.40	158	63	4,706
E01025701	Loughborough Hastings	0.36	303	109	5,868
E01025690	Loughborough Ashby	0.32	402	129	7,161
E01025689	Loughborough Ashby	0.32	436	140	7,228
E01025715	Loughborough Shelthorpe	0.32	448	141	7,400
E01025705	Loughborough Lemyngton	0.31	258	80	7,530
E01025727	Mountsorrel	0.30	388	116	8,015

MAP 4: INCOME DEPRIVATION AFFECTING CHILDREN

Map 4
Income Deprivation Affecting Children
 highlighting the 10% most deprived Super Output Areas in Charnwood



Levels of Childrens Deprivation in Charnwood
 (Number of Super Output Areas)

- Top 10% - Most Deprived
- From 10% to 50%
- From 50% to 90%
- Bottom 10% - Least Deprived

10% Most Deprived
Charnwood Super Output Areas

SOA Code	Ward
1. 5717	Loughborough Shelthorpe
2. 5725	Loughborough Storer
3. 5700	Loughborough Hastings
4. 5699	Loughborough Hastings
5. 5701	Loughborough Hastings
6. 5690	Loughborough Ashby
7. 5689	Loughborough Ashby
8. 5715	Loughborough Shelthorpe
9. 5705	Loughborough Lemington
10.5727	Mountsorrel

- District Boundary
- Electoral Ward Boudaries
- Super Output Areas

Source: 2001 Census, Output Area Boundaries.
 Crown copyright 2003. Crown copyright material
 is reproduced with the permission of the Controller
 of HMSO

© Crown copyright 2005. All rights reserved.
 Use of this image is limited to viewing on-line and printing one copy.
 Leicestershire County Council, LA100019271

Produced by R&I Team, Chief Executives
 Leicestershire County Council

Source: Office for Deputy Prime Minister 2004

Each Super Output Area has an average of about 1,500 people

INCOME DEPRIVATION AFFECTING OLDER PEOPLE

Indicators

This is a supplementary indicator that measures the proportion of people aged over 60 years in an area who live in income deprived households.

Commentary

Levels of deprivation are relatively high in this domain in Charnwood. Graph 5 shows that there are six Super Output Areas ranked within the 10% most deprived in England (parts of Loughborough Storer, Loughborough Lemyngton and Loughborough Hastings wards), and another five ranked within the 20% most deprived in England in this domain.

These areas are also ranked highly in relation to deprivation levels across the county. The six most deprived Super Output Areas in the county are all located in Charnwood, and nine of the ten most deprived areas in the county are also within Charnwood.

In Charnwood there are 3,674 people aged over 60 living in income deprived households. This accounts for 12.2% of the people aged over 60 in the borough.

It also shows that of the 12,411 people who are income deprived in Charnwood, 29.6% are aged over 60.

Map 5 shows the location of the areas which are ranked as most deprived in the borough.

Graph 5: Spread of National Ranking of all SOAs in Charnwood

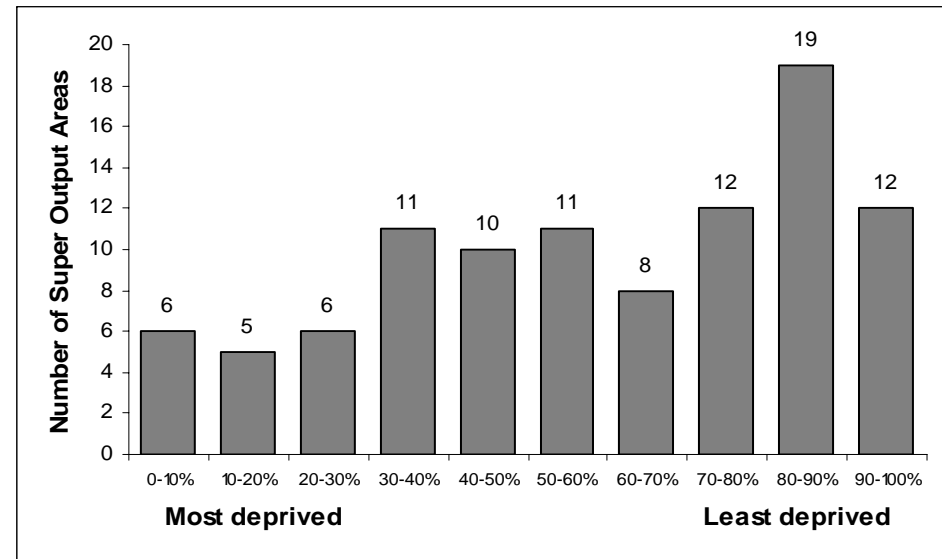
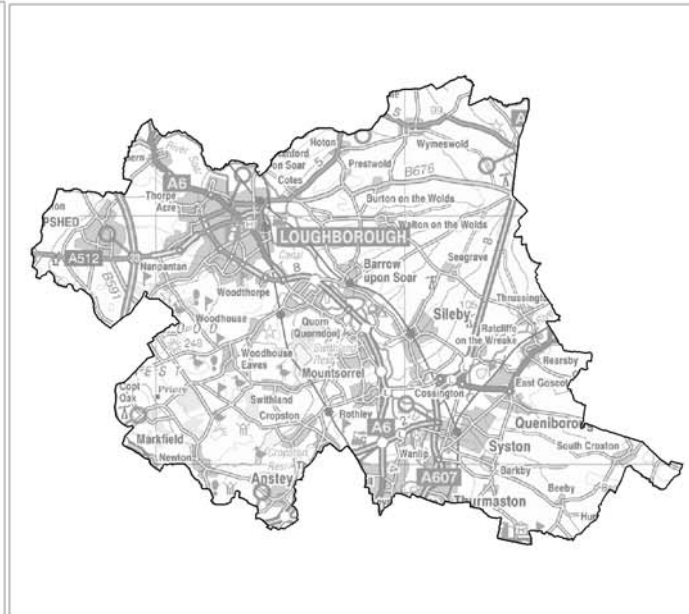
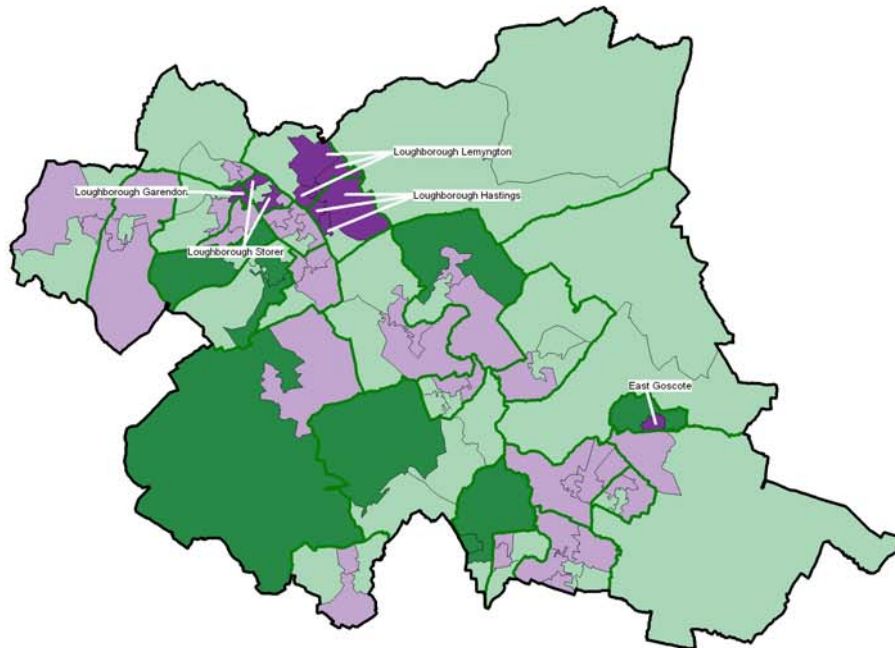


Table 6: Ten most deprived areas in Charnwood

SOA	Ward	Score	Total >60yrs	Number deprived	National Rank
E01025723	Loughborough Storer	0.36	187	68	1,698
E01025706	Loughborough Lemyngton	0.36	233	85	1,725
E01025699	Loughborough Hastings	0.34	402	137	2,259
E01025705	Loughborough Lemyngton	0.33	162	54	2,401
E01025700	Loughborough Hastings	0.33	126	41	2,660
E01025701	Loughborough Hastings	0.31	254	79	3,092
E01025697	Loughborough Garendon	0.28	534	152	4,225
E01025703	Loughborough Lemyngton	0.27	242	66	4,774
E01025725	Loughborough Storer	0.27	298	81	4,834
E01025685	East Goscote	0.25	214	584	5,806

MAP 5: INCOME DEPRIVATION AFFECTING OLDER PEOPLE

Map 5
Income Deprivation Affecting Older People
 highlighting the 10% most deprived Super Output Areas in Charnwood



Levels of Income Deprivation Affecting Older People in Charnwood
 (Number of Super Output Areas)

- Top 10% - Most Deprived
- From 10% to 50%
- From 50% to 90%
- Bottom 10% - Least Deprived

10% Most Deprived
Charnwood Super Output Area

SOA Code	Ward
1. 5723	Loughborough Storer
2. 5706	Loughborough Lemington
3. 5699	Loughborough Hastings
4. 5705	Loughborough Lemington
5. 5700	Loughborough Hastings
6. 5701	Loughborough Hastings
7. 5697	Loughborough Garendon
8. 5703	Loughborough Lemington
9. 5725	Loughborough Storer
10.5685	East Goscote

- District Boundary
- Electoral Ward Boundaries
- Super Output Areas

Source: 2001 Census, Output Area Boundaries. Crown copyright 2003. Crown copyright material is reproduced with the permission of the Controller of HMSO.

© Crown copyright 2005. All rights reserved. Use of this image is limited to viewing on-line and printing one copy. Leicestershire County Council. LA10001071.

Produced by R&I Team, Chief Executives, Leicestershire County Council.

Source: Office for Deputy Prime Minister 2004

Each Super Output Area has an average of about 1,500 people

EMPLOYMENT DEPRIVATION

Indicators

The employment deprivation domain measures the proportion of the working age population that are involuntarily excluded from the world of work. It includes both those who are registered as unemployed, but also includes elements of the more 'hidden unemployed' such as those who are out of the workforce through sickness. The indicators used are:

- Unemployment claimant count
- Incapacity Benefit claimants
- Severe Disablement Allowance claimants
- Participants in New Deal

Commentary

Overall levels of deprivation are low in Charnwood, however there are a small number of areas which are ranked relatively highly. Part of Loughborough Hastings ward is ranked within the 10% most deprived in England and parts of Loughborough Storer, Loughborough Lemyngton, Loughborough Shelthorpe and Loughborough Dishley wards are ranked within the 20% most deprived in England.

Part of Loughborough Hastings ward is also ranked as the most deprived in the county in this domain, and a further five Super Output Areas in Charnwood are ranked in the ten most deprived areas in the county.

In Charnwood, there are **6,011 people** who are employment deprived.

Graph 6: Spread of National Ranking of all SOAs in Charnwood

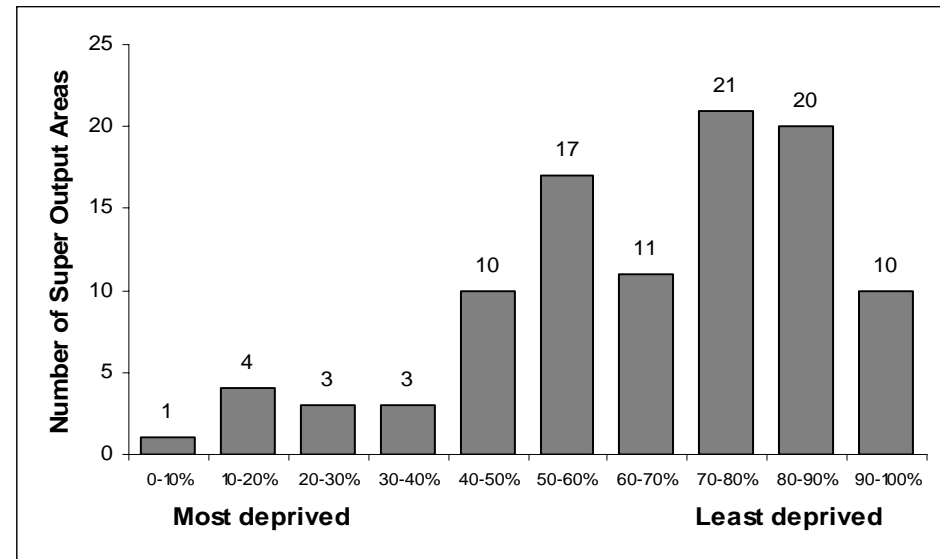
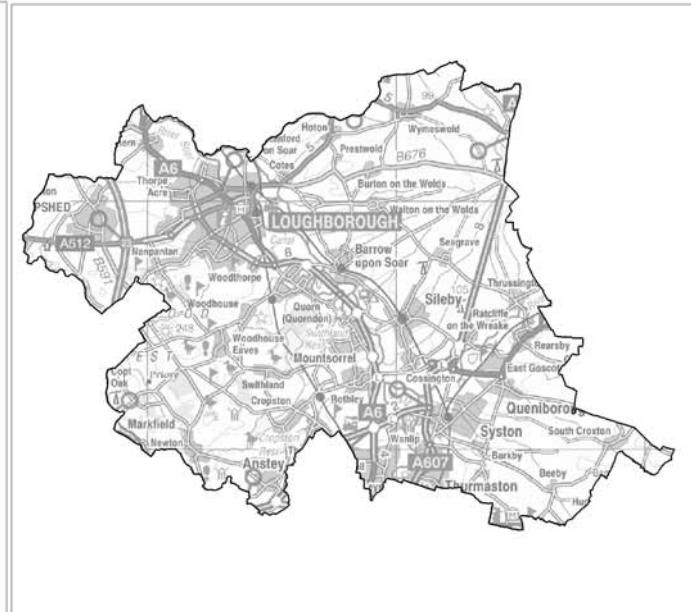
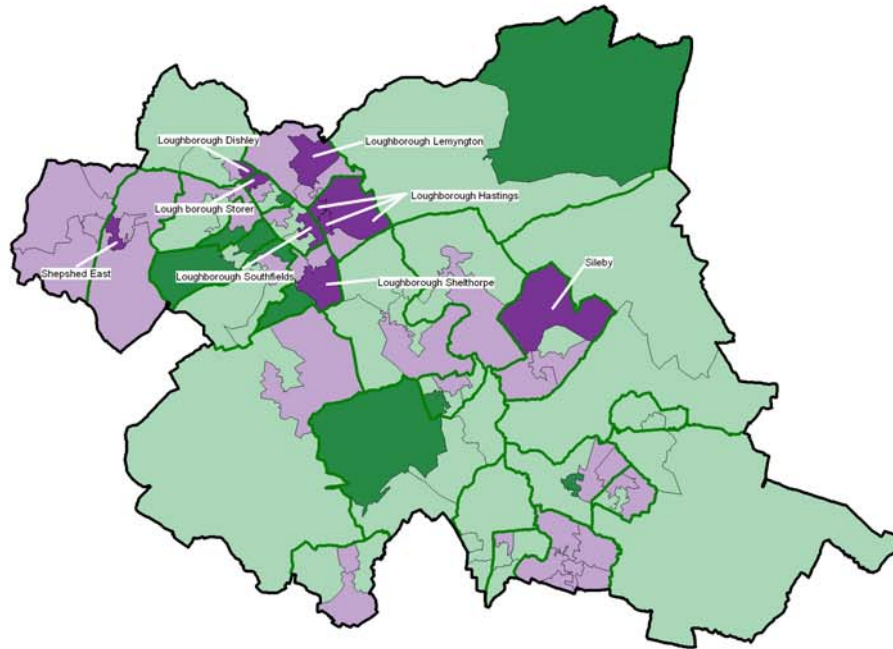


Table 7: Ten most deprived areas in Charnwood

SOA	Ward	Score	District Rank	County Rank	National Rank
E01025699	Loughborough Hastings	0.27	1	1	1,190
E01025725	Loughborough Storer	0.19	2	3	4,362
E01025706	Loughborough Lemyngton	0.16	3	5	6,180
E01025717	Loughborough Shelthorpe	0.16	4	6	6,414
E01025691	Loughborough Dishley	0.16	5	7	6,418
E01025718	Loughborough Southfields	0.15	6	8	6,938
E01025701	Loughborough Hastings	0.13	7	14	8,483
E01025700	Loughborough Hastings	0.13	8	16	9,145
E01025749	Sileby	0.11	9	25	10,963
E01025742	Shepshed East	0.11	10	29	11,478

MAP 6: EMPLOYMENT DEPRIVATION

Map 6
Employment Deprivation
 highlighting the 10% most deprived Super Output Areas in Charnwood



Levels of Employment Deprivation in Charnwood
 (Number of Super Output Areas)

- Top 10% - Most Deprived
- From 10% to 50%
- From 50% to 90%
- Bottom 10% - Least Deprived

10% Most Deprived
Charnwood Super Output Areas

SOA Code	Ward
1. 5699	Loughborough Hastings
2. 5725	Loughborough Storer
3. 5706	Loughborough Lemington
4. 5717	Loughborough Shelthorpe
5. 5691	Loughborough Dishley & Hathern
6. 5718	Loughborough Southfields
7. 5701	Loughborough Hastings
8. 5700	Loughborough Hastings
9. 5749	Sileby
10.5742	Shepshed East

- District Boundary
- Electoral Ward Boundaries
- Super Output Areas

Source: 2001 Census; Output Area Boundaries. Crown copyright 2003. Crown copyright material is reproduced with the permission of the Controller of HMSO.

© Crown copyright 2005. All rights reserved. Use of this image is limited to viewing online and printing one copy. Leicestershire County Council. LA120019271.

Produced by R&I Team, Chief Executives
 Leicestershire County Council

Source: Office for Deputy Prime Minister 2004

Each Super Output Area has an average of about 1,500 people

HEALTH DEPRIVATION AND DISABILITY

Indicators

This domain identifies areas with relatively high rates of people who die prematurely or whose quality of life is impaired by poor health or who are disabled. The indicators used to compile this domain include:

- Years of potential life lost
- Comparative Illness and Disability Ratio
- Measures of emergency admissions to hospital
- Measure of adults under 60 suffering from mood or anxiety disorders

Commentary

Levels of health deprivation in Charnwood are low with the vast majority of Super Output Areas ranked within the 50% least deprived in England. There is one area in Loughborough Hastings ward which is ranked within the 10% most deprived in England. It is also the area which has the highest levels of health deprivation in the county.

Map 7 shows where the relative levels of health deprivation are higher. The areas which are ranked as more deprived are all located within the urban area of Loughborough.

Graph 7: Spread of National Ranking of all SOAs in Charnwood

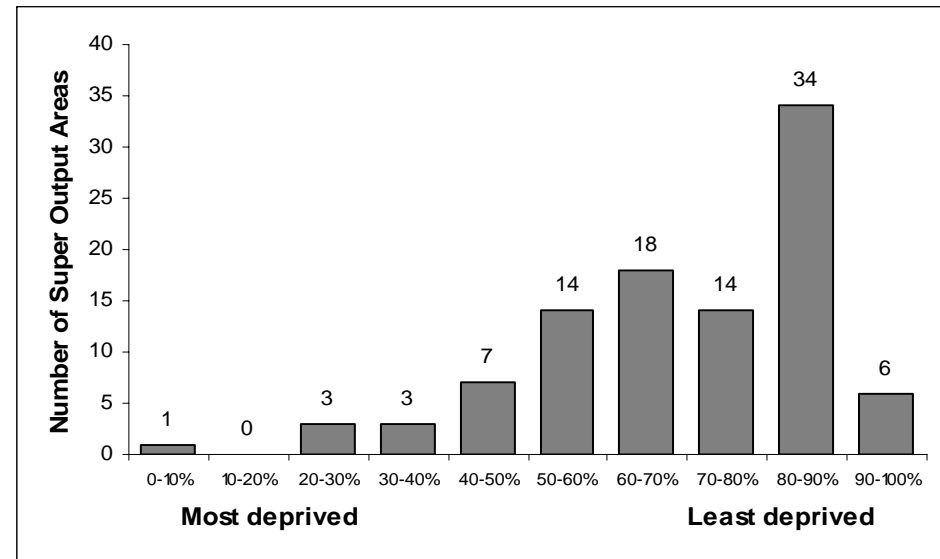
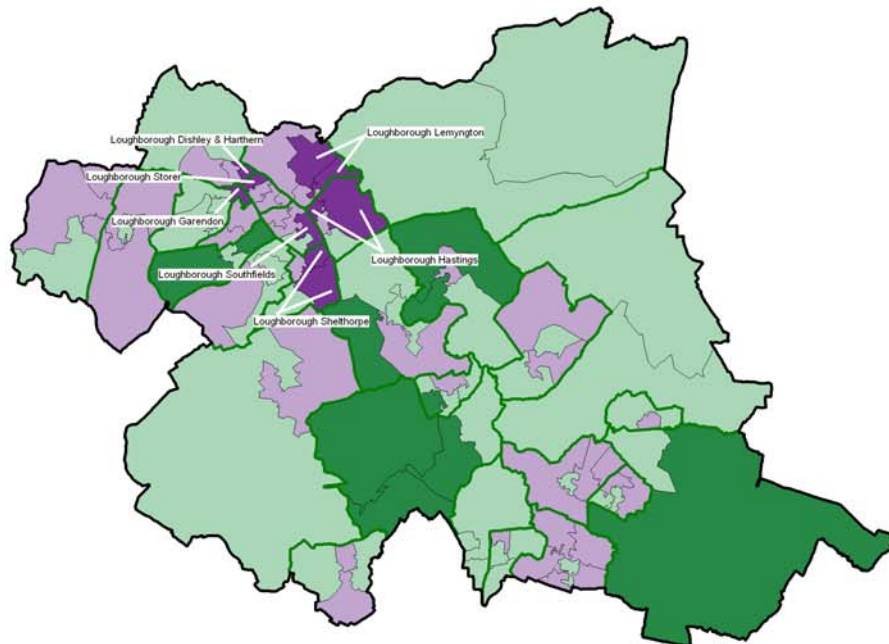


Table 8: Ten most deprived areas in Charnwood

SOA	Ward	Score	District Rank	County Rank	National Rank
E01025699	Loughborough Hastings	1.24	1	1	2,799
E01025718	Loughborough Southfields	0.74	2	4	6,793
E01025706	Loughborough Lemyngton	0.65	3	5	7,673
E01025725	Loughborough Storer	0.59	4	6	8,333
E01025700	Loughborough Hastings	0.36	5	15	11,106
E01025705	Loughborough Lemyngton	0.31	6	19	11,765
E01025697	Loughborough Garendon	0.27	7	22	12,298
E01025715	Loughborough Shelthorpe	0.20	8	26	13,179
E01025691	Loughborough Dishley	0.20	9	27	13,183
E01025717	Loughborough Shelthorpe	0.18	10	31	13,432

MAP 7: HEALTH DEPRIVATION AND DISABILITY

Map 7
Health Deprivation and Disability
 highlighting the 10% most deprived Super Output Areas in Charnwood



Levels of Health & Disability Deprivation in Charnwood
 (Number of Super Output Areas)

- Top 10% - Most Deprived
- From 10% to 50%
- From 50% to 90%
- Bottom 10% - Least Deprived

10% Most Deprived
 Charnwood Super Output Area

SOA Code	Ward
1. 5699	Loughborough Hastings
2. 5718	Loughborough Southfields
3. 5706	Loughborough Lemyngton
4. 5725	Loughborough Storer
5. 5700	Loughborough Hastings
6. 5705	Loughborough Lemyngton
7. 5697	Loughborough Garendon
8. 5715	Loughborough Shelthorpe
9. 5691	Loughborough Dishley & Hathern
10.5717	Loughborough Shelthorpe

- District Boundary
- Electoral Ward Boundaries
- Super Output Areas

Source: 2001 Census, Output Area Boundaries.
 Crown copyright 2003. Crown copyright material is reproduced with the permission of the Controller of HMSO.
 © Crown copyright 2005. All rights reserved.
 Use of this image is limited to viewing on-line and printing one copy.
 Leicestershire County Council LA10019271.

Produced by R&I Team, Chief Executives
 Leicestershire County Council

Source: Office for Deputy Prime Minister 2004

Each Super Output Area has an average of about 1,500 people

EDUCATION, SKILLS AND TRAINING

Indicators

This domain captures the extent of deprivation in education, skills and training of people living in a local area. The indicators used are:

Children / young people

- Average points score of pupils at Key Stage 2
- Average points score of pupils at Key Stage 3
- Average points score of pupils at Key Stage 4
- Proportion of young people not staying on in school or further education above 16
- Secondary school absence rate
- Proportion of those aged under 21 not entering higher education

Skills

- Proportion of working age adults with no or low qualifications

Commentary

The borough experiences higher levels of deprivation in this domain than in most of the others. There are two Super Output Areas ranked within the 10% most deprived in England, and a further six areas ranked within the 20% most deprived in England. The most deprived areas, parts of Loughborough Shelthorpe and Loughborough Storer wards, are also ranked in the three most deprived areas in the county.

Map 8 shows where levels of deprivation are higher.

Graph 8: Spread of National Ranking of all SOAs in Charnwood

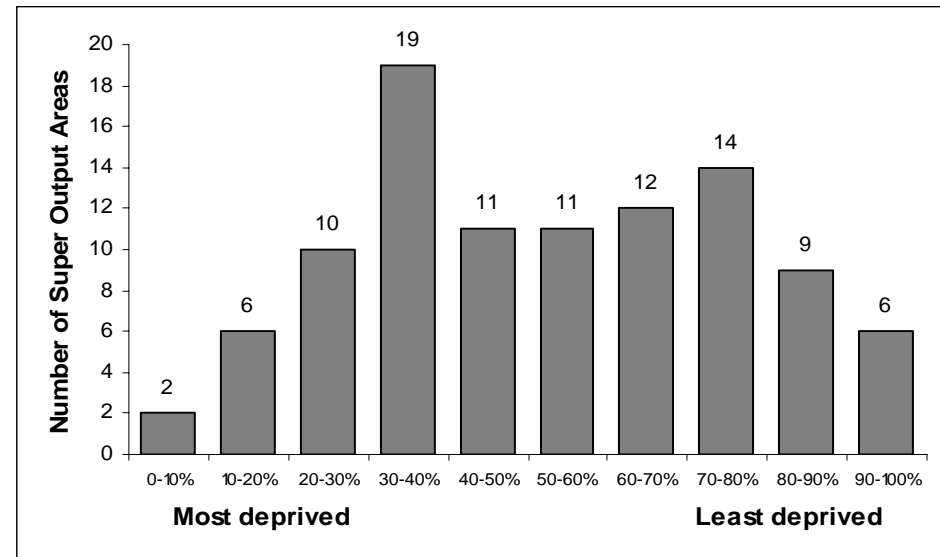
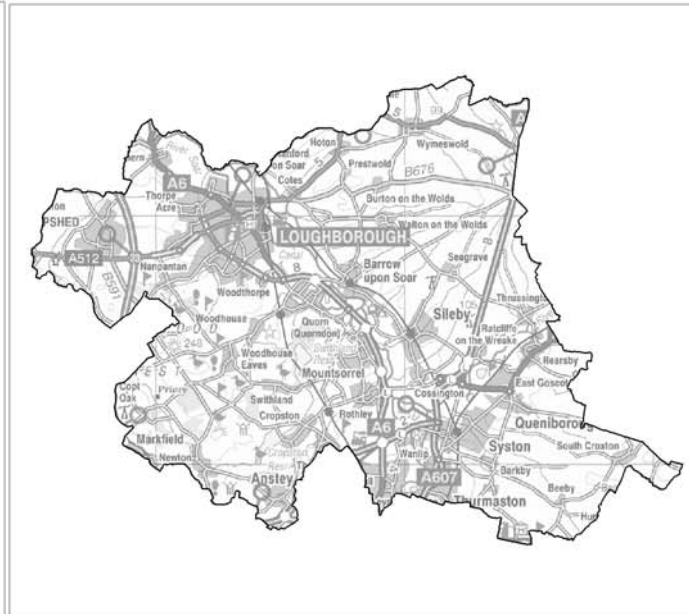
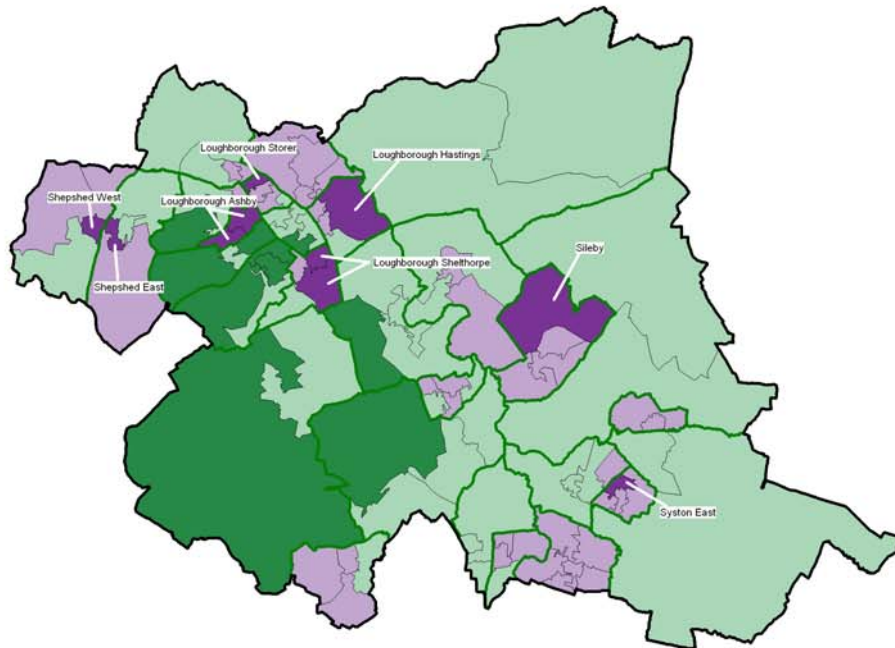


Table 9: Ten most deprived areas in Charnwood

SOA	Ward	Score	District Rank	County Rank	National Rank
E01025717	Loughborough Shelthorpe	71.46	1	2	803
E01025725	Loughborough Storer	63.19	2	3	1,493
E01025715	Loughborough Shelthorpe	46.43	3	8	3,805
E01025690	Loughborough Ashby	41.71	4	14	4,766
E01025747	Shepshed West	41.43	5	15	4,840
E01025689	Loughborough Ashby	39.53	6	19	5,281
E01025700	Loughborough Hastings	36.68	7	27	6,019
E01025742	Shepshed East	36.52	8	28	6,065
E01025753	Syston East	34.49	9	33	6,670
E01025749	Sileby	33.29	10	36	7,068

MAP 8: EDUCATION, SKILLS AND TRAINING DEPRIVATION

Map 8
Education, Skills and Training Deprivation
 highlighting the 10% most deprived Super Output Areas in Charnwood



Levels of Education, Skills and Training Deprivation in Charnwood
 (Number of Super Output Areas)

- Top 10% - Most Deprived
- 10% to 50%
- 50% to 90%
- Bottom 10% - Least Deprived

Top 10 Most Deprived
Charnwood Super Output Area

SOA Code	Ward
1.5717	Loughborough Shelthorpe
2.5725	Loughborough Storer
3.5715	Loughborough Shelthorpe
4.5690	Loughborough Ashby
5.5747	Shepshed West
6.5689	Loughborough Ashby
7.5700	Loughborough Hastings
8.5742	Shepshed East
9.5753	Syston East
10.5749	Sileby

- District Boundary
- Electoral Ward Boundaries
- Super Output Areas

Source: 2001 Census, Output Area Boundaries.
 Crown copyright 2003. Crown copyright material
 is reproduced with the permission of the Controller
 of HMSO
 © Crown copyright 2005. All rights reserved.
 Use of this image is limited to viewing on line and printing one copy.
 Leicestershire County Council. LA100019071

Produced by R&I Team, Chief Executives
 Leicestershire County Council

Source: Office for Deputy Prime Minister 2004

Each Super Output Area has an average of about 1,500 people

BARRIERS TO HOUSING AND SERVICES

Indicators

This domain measures the barriers faced by the local population relating to housing along with a measure of the distance needed to travel to key local services. The indicators used are:

Wider Barriers

- Household overcrowding
- Percentage of households with assistance under the homeless provisions of housing legislation
- Difficulty of access to owner occupation

Geographical Barriers

- Road distance to GP premises
- Road distance to a supermarket or convenience store
- Road distance to a primary school
- Road distance to a Post Office

Commentary

The borough experiences relatively high levels of deprivation in this domain with one Super Output Area ranked in the 10% most deprived in England, and a further two ranked in the 20% most deprived in England. The most deprived area in Charnwood is part of The Wolds ward which is also ranked in the ten most deprived areas in the county in this domain.

The more deprived areas are shown on Map 9. This map shows a different pattern of deprivation than the other domains. The more deprived areas are all located in the more rural parts of the borough and reflect the more restricted access to key local services experienced by residents.

Graph 9: Spread of National Ranking of all SOAs in Charnwood

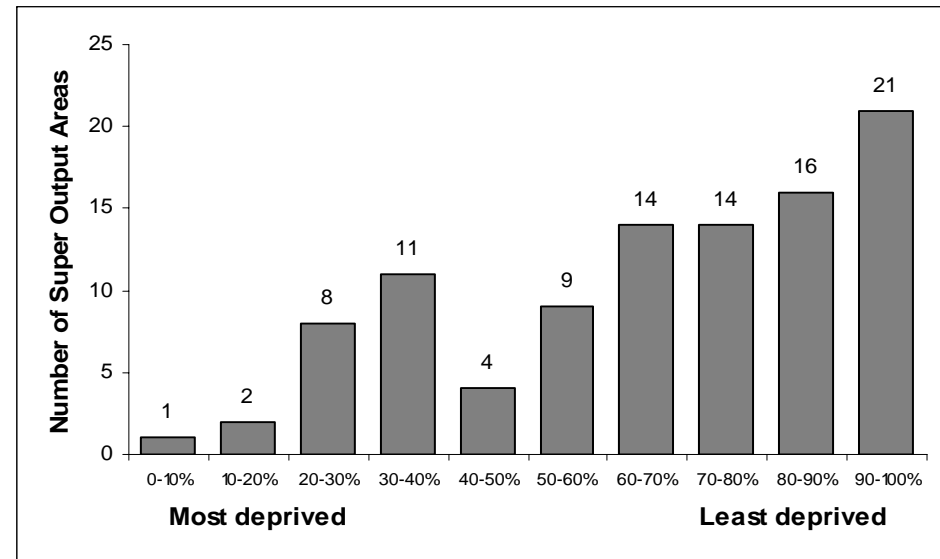
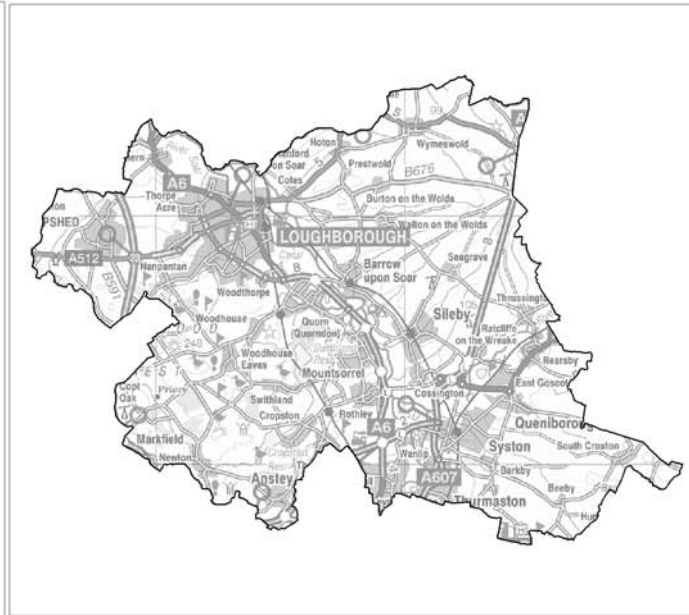
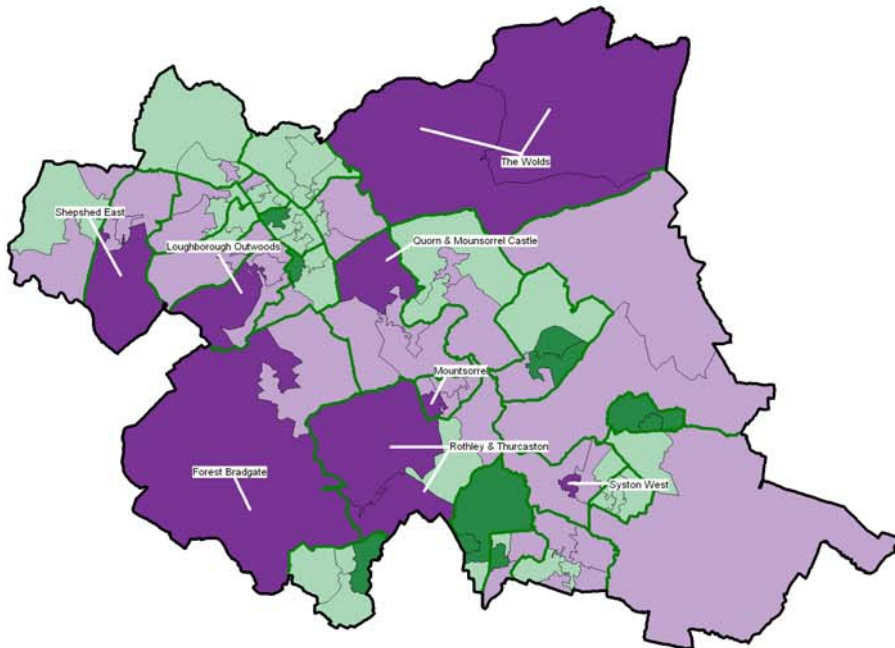


Table 10: Ten most deprived areas in Charnwood

SOA	Ward	Score	District Rank	County Rank	National Rank
E01025760	The Wolds	39.70	1	9	2,341
E01025738	Rothley & Thurcaston	31.68	2	23	6,054
E01025757	Syston West	31.05	3	24	6,464
E01025732	Quorn & Mountsorrel Castle	28.68	4	30	8,112
E01025761	The Wolds	28.18	5	35	8,527
E01025729	Mountsorrel	28.16	6	36	8,541
E01025736	Rothley & Thurcaston	27.90	7	37	8,757
E01025687	Forest Bradgate	27.31	8	38	9,262
E01025740	Shepshed East	27.04	9	42	9,491
E01025710	Loughborough Outwoods	26.84	10	44	9,660

MAP 9: BARRIERS TO HOUSING AND SERVICES

Map 9
Barriers to Housing and Services
 highlighting the 10% most deprived Super Output Areas in Charnwood



Level of Housing and Services Deprivation in Charnwood
 (Number of Super Output Areas)

- Top 10% - Most Deprived
- From 10% to 50%
- From 50% to 90%
- Bottom 10% - Least Deprived

10% Most Deprived
Charnwood Super Output Areas

SOA Code	Ward
1. 5760	The Wolds
2. 5738	Rothley & Thurcaston
3. 5757	System West
4. 5732	Quorn & Mountsorrel Castle
5. 5761	The Wolds
6. 5729	Mountsorrel
7. 5736	Rothley & Thurcaston
8. 5687	Forest Bradgate
9. 5740	Shepshed East
10.5710	Loughborough Outwoods

- District Boundary
- Electoral Ward Boundaries
- Super Output Areas

Source: 2001 Census, Output Area Boundaries.
 Crown copyright 2003. Crown copyright material
 is reproduced with the permission of the Controller
 of HMSO.

© Crown copyright 2005. All rights reserved.
 Use of this image is limited to viewing on line and printing one copy.
 Leicestershire County Council. LA1000/9271

Produced by R&I Team, Chief Executives
 Leicestershire County Council

Source: Office for Deputy Prime Minister 2004

Each Super Output Area has an average of about 1,500 people

LIVING ENVIRONMENT

Indicators

This domain looks at both the indoor and outdoor living environment. The indicators used include:

Indoor Living Environment

- Social and private housing in poor condition
- Houses without central heating

Outdoor Living Environment

- Air quality
- Road traffic accidents involving injury to pedestrians and cyclists

Commentary

There is one Super Output Area in the borough which is ranked within the 10% most deprived in England and is also ranked as the most deprived in the county – part of Loughborough Lemyngton ward. There are a further four Super Output Areas which are within the 20% most deprived in England – part of Loughborough Lemyngton, Loughborough Southfields, Loughborough Hastings and Loughborough Storer wards. These areas are also within the ten most deprived areas in the county.

The more deprived areas are shown on Map 10.

Graph10: Spread of National Ranking of all SOAs in Charnwood

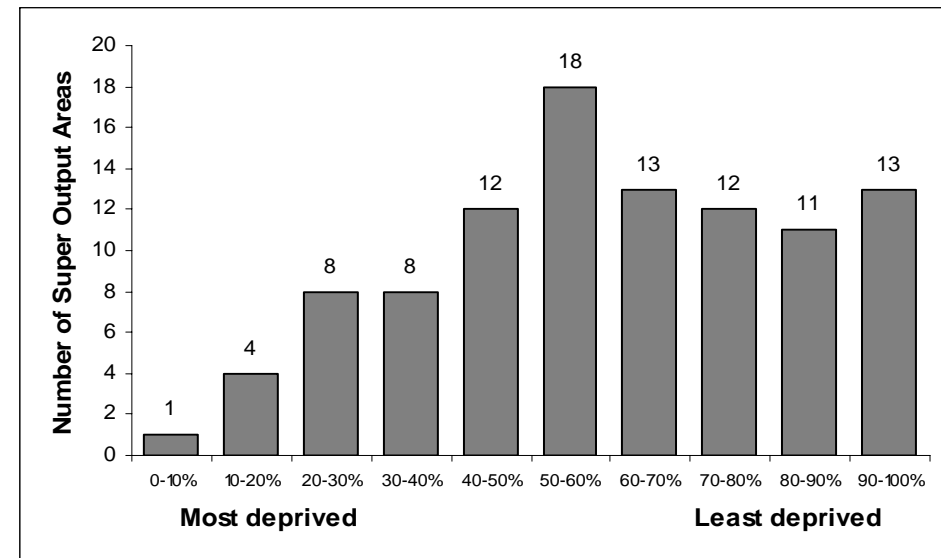
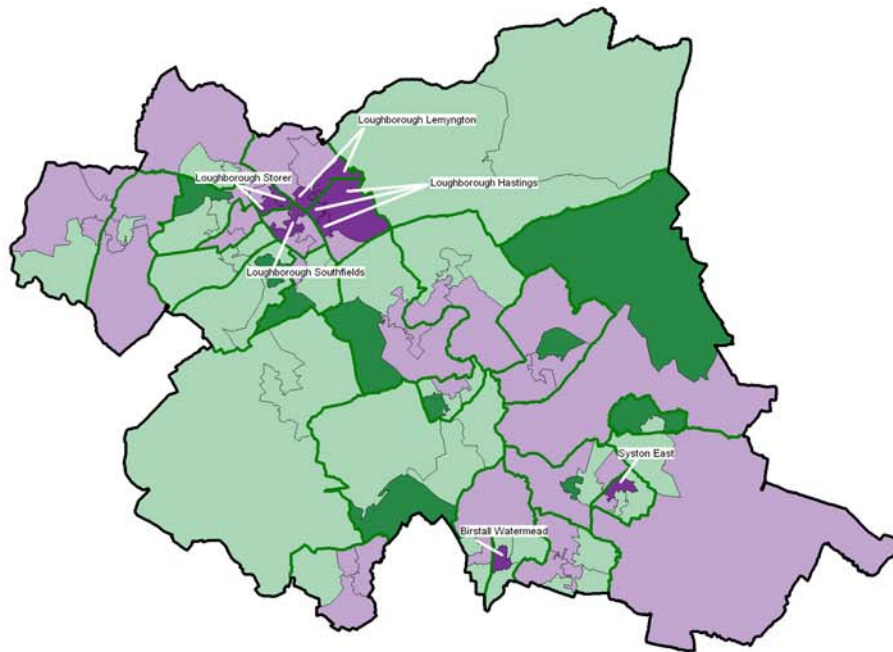


Table 11: Ten most deprived areas in Charnwood

SOA	Ward	Score	District Rank	County Rank	National Rank
E01025705	Loughborough Lemyngton	47.62	1	1	3,051
E01025703	Loughborough Lemyngton	46.06	2	3	3,382
E01025720	Loughborough Southfields	43.56	3	5	4,011
E01025701	Loughborough Hastings	39.36	4	6	5,198
E01025724	Loughborough Storer	38.66	5	7	5,410
E01025699	Loughborough Hastings	34.20	6	11	6,988
E01025700	Loughborough Hastings	33.92	7	12	7,096
E01025723	Loughborough Storer	32.55	8	14	7,626
E01025684	Birstall Watermead	31.46	9	17	8,067
E01025753	Syston East	29.71	10	21	8,859

MAP 10: LIVING ENVIRONMENT

Map 10
Living Environment Deprivation
 highlighting the 10% most deprived Super Output Areas in Charnwood



Levels of Living Environment Deprivation in Charnwood
 (Number of Super Output Areas)

- Top 10% - Most Deprived
- From 10% to 50%
- From 50% to 90%
- Bottom 10% - Least Deprived

10% Most Deprived
Charnwood Super Output Areas

SOA Code	Ward
1. 5705	Loughborough Lemington
2. 5703	Loughborough Lemington
3. 5720	Loughborough Southfields
4. 5701	Loughborough Hastings
5. 5724	Loughborough Storer
6. 5699	Loughborough Hastings
7. 5700	Loughborough Hastings
8. 5723	Loughborough Storer
9. 5684	Birstal Watermead
10.5753	System East

- District Boundary
- Electoral Ward Boudaries
- Super Output Areas

Source: 2001 Census, Output Area Boundaries. Crown copyright 2003. Crown copyright material is reproduced with the permission of the Controller of HMSO.
 © Crown copyright 2005. All rights reserved. Use of this image is limited to viewing on-line and printing one copy. Leicestershire County Council LA100019271.

Produced by R&I Team, Chief Executives
 Leicestershire County Council

Source: Office for Deputy Prime Minister 2004

Each Super Output Area has an average of about 1,500 people

CRIME DOMAIN

Indicators

This domain measures the rate of recorded crime for four main crime types – burglary, theft, criminal damage and violence.

Commentary

Overall levels of crime deprivation are low in Charnwood with the majority of Super Output Areas ranked within the 50% least deprived in England. However, there are a few areas where deprivation levels in this domain are particularly high, with the highest levels of deprivation in part of Loughborough Southfields and Loughborough Hastings which are in the 10% most deprived in England. These areas are also amongst the three most deprived areas in the county.

Map 11 shows the areas which are considered to be more deprived.

Graph 11: Spread of National Ranking of SOAs in Charnwood

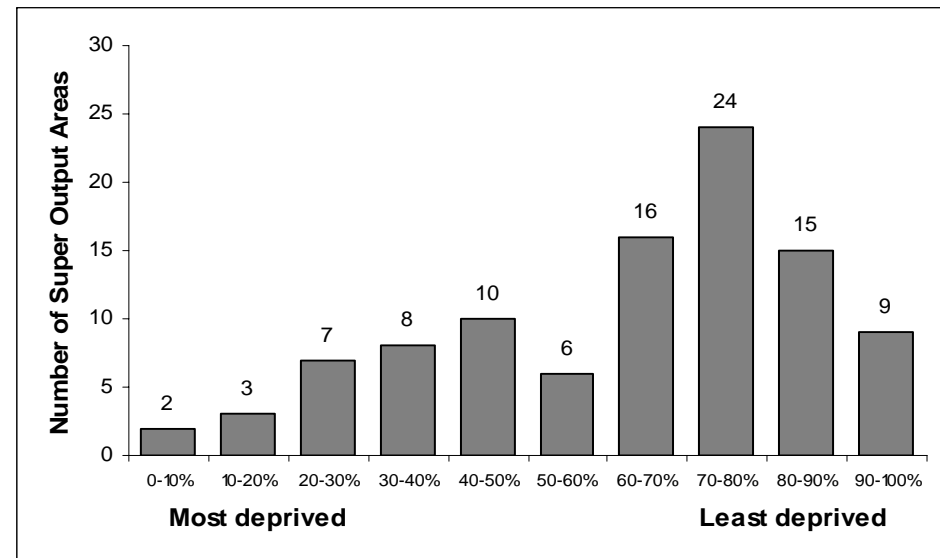
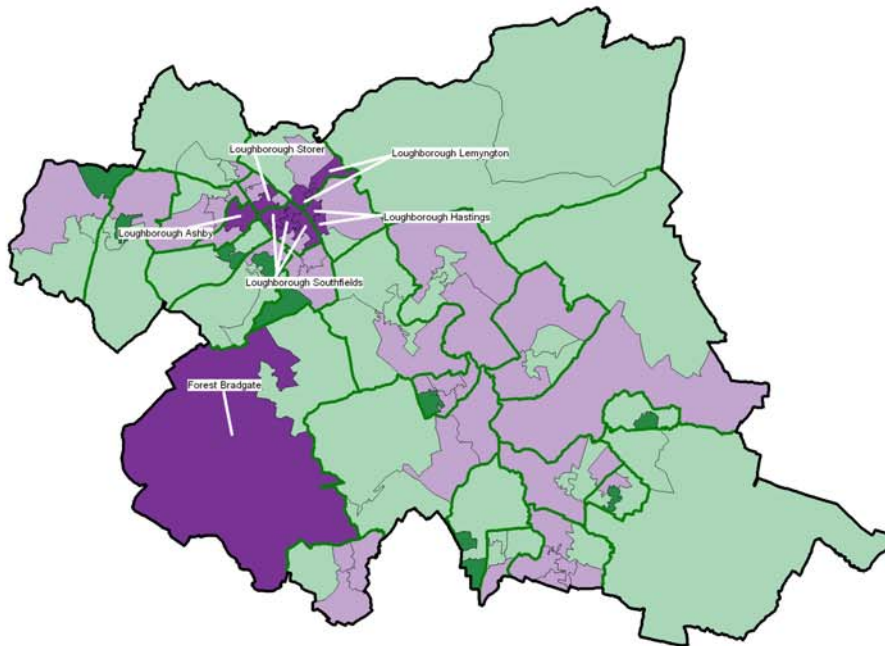


Table 12: Ten most deprived areas in Charnwood

SOA	Ward	Score	District Rank	County Rank	National Rank
E01025720	Loughborough Southfields	1.38	1	1	1,637
E01025699	Loughborough Hastings	1.12	2	3	2,994
E01025718	Loughborough Southfields	1.07	3	5	3,408
E01025723	Loughborough Storer	0.79	4	14	5,907
E01025721	Loughborough Southfields	0.74	5	18	6,445
E01025687	Forest Bradgate	0.71	6	19	6,720
E01025689	Loughborough Ashby	0.67	7	21	7,254
E01025703	Loughborough Lemyngton	0.66	8	22	7,263
E01025701	Loughborough Hastings	0.62	9	25	7,745
E01025705	Loughborough Lemyngton	0.62	10	26	7,779

MAP 11: CRIME DOMAIN

Map 11
Crime Deprivation
 highlighting the 10% most deprived Super Output Areas in Charnwood



Levels of Crime Deprivation in Charnwood
 (Number of Super Output Areas)

- Top 10% - Most Deprived
- 10% to 50%
- 50% to 90%
- Bottom 10% - Least Deprived

10% Most Deprived
Charnwood Super Output Areas

SOA Code	Ward
1.5720	Loughborough Southfields
2.5699	Loughborough Hastings
3.5718	Loughborough Southfields
4.5723	Loughborough Storer
5.5721	Loughborough Southfields
6. 5687	Forest Bradgate
7. 5689	Loughborough Ashby
8. 5703	Loughborough Lemington
9. 5701	Loughborough Hastings
10.5705	Loughborough Lemington

- District Boundary
- Electoral Ward Boundaries
- Super Output Areas

Source: 2001 Census, Output Area Boundaries
 Crown copyright 2003. Crown copyright material
 is reproduced with the permission of the Controller
 of HMSO.

© Crown copyright 2005. All rights reserved.
 Use of this image is limited to viewing on-line and printing one copy.
 Leicestershire County Council. LA/00019271.

Produced by R&I Team: Chief Executives
 Leicestershire County Council

Source: Office for Deputy Prime Minister 2004

Each Super Output Area has an average of about 1,500 people

APPENDIX 1

The table below shows each Super Output Area in the district, the ward in which it is located along with the ranking within England (where a ranking of 1 = most deprived in England, 32,482 = least deprived in England). For ease of use, any area ranked within the 20% most deprived in England (ranked between 1 and 6,496) has been shaded.

SOA	Ward	IMD	Income	Employment	Health	Education	Barriers	Living		IDAC	IDAOP
								Env	Crime		
E01025670	Anstey	18,350	15,970	19,223	22,034	8,024	30,335	18,662	13,665	17,352	13,666
E01025671	Anstey	27,586	27,126	26,988	28,068	18,583	31,887	18,876	13,037	26,740	26,631
E01025672	Anstey	26,390	22,287	25,613	27,003	13,730	29,660	22,292	22,815	20,860	22,708
E01025673	Anstey	19,757	18,317	20,423	21,226	12,002	29,233	14,147	12,976	21,831	14,313
E01025674	Barrow & Sileby West	22,054	19,266	21,948	24,179	15,808	22,137	12,731	20,450	17,435	19,515
E01025675	Barrow & Sileby West	27,364	23,689	24,758	28,787	20,559	31,017	14,594	22,976	20,552	26,268
E01025676	Barrow & Sileby West	30,451	31,868	27,849	28,961	23,732	27,878	20,216	19,092	31,892	30,892
E01025677	Barrow & Sileby West	21,280	17,078	18,601	18,820	15,803	22,962	19,470	26,924	19,779	11,037
E01025678	Birstall Wanlip	31,105	25,319	26,811	28,287	26,103	30,895	28,795	29,422	25,990	24,882
E01025679	Birstall Wanlip	29,817	29,234	25,921	28,017	20,956	31,483	19,157	24,781	27,119	31,977
E01025680	Birstall Wanlip	30,804	29,169	25,178	26,985	21,090	31,387	27,341	31,341	29,318	30,431
E01025681	Birstall Watermead	28,422	25,450	24,803	26,958	26,159	22,402	24,693	18,198	24,849	27,928
E01025682	Birstall Watermead	26,143	22,170	24,690	26,871	15,517	22,316	25,298	22,933	17,921	28,103
E01025683	Birstall Watermead	20,168	15,394	18,120	20,595	10,848	28,515	22,590	24,400	17,542	16,218
E01025684	Birstall Watermead	24,151	22,379	24,733	27,173	15,060	32,190	8,067	23,120	22,482	18,974
E01025685	East Goscote	26,235	21,237	26,377	19,538	12,470	31,992	28,727	29,686	24,246	5,806
E01025686	East Goscote	29,616	30,622	26,645	27,208	13,116	31,666	31,922	23,345	30,245	30,863
E01025687	Forest Bradgate	25,490	29,303	27,384	28,757	29,450	9,262	22,497	6,720	29,436	31,666
E01025688	Forest Bradgate	20,620	16,531	18,246	20,245	22,228	11,979	19,902	23,673	20,497	16,201
E01025689	Loughborough Ashby	12,551	10,952	17,895	17,841	5,281	24,130	11,140	7,254	7,228	11,525
E01025690	Loughborough Ashby	20,800	19,968	30,424	18,970	4,766	28,993	17,944	21,025	7,161	12,400
E01025691	L'boro Dishley & Hathern	11,639	13,177	6,418	13,183	11,725	26,802	11,527	12,294	17,916	18,872
E01025692	L'boro Dishley & Hathern	26,083	18,430	23,779	23,256	18,974	29,300	28,540	23,912	15,508	28,931
E01025693	L'boro Dishley & Hathern	26,647	25,457	23,953	27,930	21,677	23,603	11,810	24,905	21,021	28,441
E01025694	L'boro Dishley & Hathern	24,225	25,504	21,660	21,669	12,032	20,951	25,559	22,481	26,649	18,263
E01025695	Loughborough Garendon	27,601	28,773	23,671	28,070	28,600	16,342	23,000	13,418	24,488	30,045
E01025696	Loughborough Garendon	29,802	30,958	22,973	26,052	22,987	21,938	29,588	25,944	31,706	26,621

Continued on next page

APPENDIX 1

SOA	Ward	IMD	Income	Employment	Health	Education	Barriers	Living Env	Crime	IDAC	IDAOP
E01025697	Loughborough Garendon	13,023	9,434	13,410	12,298	10,018	24,956	16,335	13,333	16,224	4,225
E01025698	Loughborough Garendon	25,264	21,255	28,046	25,362	19,380	24,047	24,548	10,101	19,121	12,544
E01025699	Loughborough Hastings	3,344	3,634	1,190	2,799	12,803	28,493	6,988	2,994	4,706	2,259
E01025700	Loughborough Hastings	7,402	4,144	9,145	11,106	6,019	20,175	7,096	8,803	4,026	2,660
E01025701	Loughborough Hastings	9,074	6,019	8,483	15,183	11,703	25,042	5,198	7,745	5,868	3,092
E01025702	Loughborough Hastings	22,240	22,131	18,463	25,414	18,857	12,061	14,764	27,106	23,388	20,553
E01025703	Loughborough Lemyngton	13,081	13,723	15,011	17,941	11,727	31,103	3,382	7,263	15,437	4,774
E01025704	Loughborough Lemyngton	20,998	22,406	17,755	23,373	12,072	28,102	9,164	25,679	22,053	21,144
E01025705	Loughborough Lemyngton	9,946	8,398	13,664	11,765	8,603	29,959	3,051	7,779	7,530	2,401
E01025706	Loughborough Lemyngton	8,941	7,159	6,180	7,673	7,999	30,771	13,821	13,485	9,938	1,725
E01025707	Loughborough Nanpantan	30,348	30,952	28,746	28,240	27,051	10,135	26,991	31,371	32,023	27,619
E01025708	Loughborough Nanpantan	31,364	32,107	30,405	29,684	30,303	18,855	21,005	23,970	31,768	31,727
E01025709	Loughborough Nanpantan	30,690	32,307	32,158	30,020	30,300	10,600	21,311	24,218	31,184	31,655
E01025710	Loughborough Outwoods	27,795	27,928	23,111	22,735	30,333	9,660	29,498	26,812	32,228	23,594
E01025711	Loughborough Outwoods	30,755	31,519	22,764	28,682	27,411	18,750	30,760	29,970	31,037	32,247
E01025712	Loughborough Outwoods	28,678	29,977	23,235	26,376	26,138	11,467	27,684	28,488	30,255	31,374
E01025713	Loughborough Outwoods	30,827	31,655	30,145	26,384	29,149	21,700	19,611	21,833	31,814	28,719
E01025714	Loughborough Shelthorpe	30,749	28,508	30,085	27,982	23,473	14,499	32,146	31,076	25,279	27,819
E01025715	Loughborough Shelthorpe	11,441	8,595	13,481	13,179	3,805	29,573	21,163	12,040	7,400	12,663
E01025716	Loughborough Shelthorpe	17,163	14,022	17,898	21,991	7,825	31,539	14,906	15,618	15,385	15,755
E01025717	Loughborough Shelthorpe	5,232	2,280	6,414	13,432	803	27,316	21,094	8,623	1,888	7,291
E01025718	Loughborough Southfields	8,657	8,192	6,938	6,793	18,434	24,696	9,671	3,408	11,494	6,039
E01025719	Loughborough Southfields	28,509	27,715	25,946	26,555	28,914	29,011	13,728	16,748	27,289	26,006
E01025720	Loughborough Southfields	16,534	19,962	25,881	21,810	22,003	26,715	4,011	1,637	14,095	10,316
E01025721	Loughborough Southfields	21,663	21,188	21,957	16,678	26,043	31,182	15,767	6,445	27,839	9,852
E01025722	Loughborough Storer	18,468	19,205	17,333	23,084	12,100	24,987	10,242	13,679	16,921	24,733
E01025723	Loughborough Storer	16,360	15,082	28,220	15,690	10,958	29,281	7,626	5,907	8,795	1,698
E01025724	Loughborough Storer	23,663	23,262	30,079	20,342	23,751	30,504	5,410	13,151	13,753	7,941
E01025725	Loughborough Storer	5,056	4,154	4,362	8,333	1,493	22,282	11,304	10,362	3,755	4,834
E01025726	Mountsorrel	28,037	25,508	28,462	27,065	20,341	18,427	26,442	18,240	25,123	13,391

Continued on next page

APPENDIX 1

SOA	Ward	IMD	Income	Employment	Health	Education	Barriers	Living		IDAC	IDAOP
								Env	Crime		
E01025727	Mountsorrel	11,776	8,313	12,988	15,391	7,174	20,992	14,705	12,239	8,015	10,830
E01025728	Mountsorrel	22,928	21,795	23,271	26,147	11,273	11,949	29,167	21,579	19,372	28,085
E01025729	Mountsorrel	30,054	29,164	30,631	30,846	22,722	8,541	31,620	31,161	26,311	28,746
E01025730	Queniborough	28,232	26,864	29,225	29,376	22,119	14,828	17,363	23,983	26,193	25,600
E01025731	Queniborough	28,533	23,737	26,744	28,332	19,006	24,740	22,953	26,976	30,137	15,525
E01025732	Quorn & Mountsorrel Castle	26,917	27,415	24,472	26,332	26,292	8,112	24,719	25,083	31,251	20,064
E01025733	Quorn & Mountsorrel Castle	27,506	21,694	27,186	26,687	24,807	20,772	19,049	23,162	28,835	13,095
E01025734	Quorn & Mountsorrel Castle	31,654	29,259	28,697	30,338	30,868	20,869	30,237	24,888	29,732	26,923
E01025735	Quorn & Mountsorrel Castle	18,816	19,112	18,710	22,629	20,983	12,553	11,609	11,082	20,374	18,928
E01025736	Rothley & Thurcaston	28,801	28,008	26,644	29,051	25,912	8,757	30,220	26,476	30,173	26,981
E01025737	Rothley & Thurcaston	27,589	27,533	25,284	25,751	24,961	17,349	24,378	15,552	28,962	23,283
E01025738	Rothley & Thurcaston	30,169	31,962	31,525	31,535	30,092	6,054	29,513	23,469	32,173	30,639
E01025739	Rothley & Thurcaston	27,511	21,932	25,181	30,416	21,668	26,827	25,756	15,653	21,825	24,317
E01025740	Shepshed East	19,731	18,818	20,210	20,247	16,558	9,491	13,782	26,207	18,086	16,323
E01025741	Shepshed East	29,426	28,750	22,455	24,430	24,765	21,508	26,746	31,376	31,966	25,969
E01025742	Shepshed East	13,537	11,653	11,478	18,058	6,065	16,929	16,781	27,044	9,840	16,176
E01025743	Shepshed East	20,314	19,623	18,733	19,446	17,503	17,120	13,886	19,566	24,822	8,014
E01025744	Shepshed West	25,804	30,280	20,556	24,612	17,360	9,704	28,122	29,169	30,143	29,948
E01025745	Shepshed West	24,814	26,842	20,748	22,384	16,383	17,210	18,226	29,202	27,924	22,248
E01025746	Shepshed West	17,551	13,777	14,007	18,124	15,608	24,285	16,674	20,618	15,661	9,141
E01025747	Shepshed West	16,857	18,095	14,592	21,090	4,840	23,626	17,806	27,714	19,830	18,205
E01025748	Sileby	21,575	23,297	19,955	24,989	11,011	16,961	18,643	19,028	27,150	18,106
E01025749	Sileby	13,030	10,215	10,963	15,973	7,068	24,905	15,534	21,317	9,185	23,430
E01025750	Sileby	27,908	24,241	27,504	28,644	11,265	31,339	30,386	23,460	21,143	27,076
E01025751	Sileby	19,963	20,432	18,377	18,875	7,975	31,342	15,578	25,320	19,969	24,123
E01025752	Syston East	23,441	21,963	20,920	22,560	10,724	25,729	21,064	28,825	22,189	17,979
E01025753	Syston East	13,846	10,377	15,469	16,747	6,670	29,964	8,859	21,881	12,080	9,539
E01025754	Syston East	28,860	24,695	26,626	26,300	14,933	28,718	29,466	29,816	21,894	23,314
E01025755	Syston East	26,741	23,883	25,564	26,959	14,107	28,249	18,446	27,061	20,140	28,035
E01025756	Syston West	22,196	17,007	19,445	21,845	16,889	22,420	20,454	25,328	18,102	14,827

Continued on next page

APPENDIX 1

SOA	Ward	IMD	Income	Employment	Health	Education	Barriers	Living Env	Crime	IDAC	IDAOP
E01025757	System West	26,165	23,556	29,427	25,766	20,333	6,464	29,730	26,928	23,261	10,050
E01025758	System West	23,472	21,315	27,582	22,978	23,338	12,632	17,102	12,688	25,163	11,302
E01025759	System West	20,333	15,201	18,180	20,525	15,381	30,848	16,752	20,102	17,798	11,495
E01025760	The Wolds	23,385	25,608	25,510	28,310	25,667	2,341	21,116	24,272	25,380	24,702
E01025761	The Wolds	28,658	27,304	29,590	27,898	26,350	8,527	27,082	24,446	30,318	20,118
E01025762	Thurmaston	16,938	16,705	15,301	16,698	9,011	15,733	23,131	21,183	16,274	19,567
E01025763	Thurmaston	18,366	16,691	18,235	18,057	11,712	25,616	11,827	20,448	17,714	16,640
E01025764	Thurmaston	21,823	22,792	17,893	23,880	11,247	27,911	17,508	19,450	21,010	26,400
E01025765	Thurmaston	20,064	19,964	14,193	17,835	13,794	22,769	25,323	22,048	21,129	18,721
E01025766	Thurmaston	14,471	13,442	16,015	18,949	7,511	15,903	9,221	20,473	12,950	7,873
E01025767	Thurmaston	20,045	18,597	19,355	22,568	10,983	12,871	23,503	23,042	18,830	18,324
E01025768	Wreake Villages	29,777	29,987	28,737	26,854	25,108	10,816	29,581	27,420	28,978	28,323
E01025769	Wreake Villages	27,898	28,299	27,596	28,781	24,407	12,500	19,233	20,480	27,816	27,790

If you require information contained in this publication in another version eg large print, Braille, tape or an alternative language please call 0116 265 8262 or email sgeddes@leics.gov.uk
