

Office of the Deputy Prime Minister  
**Indices of Deprivation 2004**  
**Key Findings in Harborough**

January 2005



Report Produced by Research & Information Team  
Chief Executives Department  
Leicestershire County Council



## CONTENTS

### Contents

	<b>Page</b>
Introduction	2
District Summary	3
Geography	4
Local Data	6
Index of Multiple Deprivation	8
Income Deprivation	10
Income Deprivation Affecting Children	12
Income Deprivation Affecting Older People	14
Employment Deprivation	16
Health Deprivation and Disability	18
Education, Skills and Training Deprivation	20
Barriers to Housing and Services	22
Living Environment	24
Crime Deprivation	26
Appendix 1	28

## INTRODUCTION

### Introduction

The Indices of Deprivation 2004 are produced by the Office of the Deputy Prime Minister (ODPM). They are an attempt to measure deprivation in a consistent way for small areas across England. They were first developed in the mid 1990's using data from the 1991 Census. Since then the Indices have been revised several times using updated data and new indicators to reflect change. They have been widely used to target regeneration resources through the regional allocation of the SRB Challenge Fund.

In recent years with the release of the Indices of Deprivation (ID2000) in July 2000, use of the Indices has become more widespread. Both central and local government places a lot of value on the Indices and the Audit Commission uses it as one measure for the Quality of Life Indicators.

### Indices of Deprivation 2004

The Indices of Deprivation 2004 (ID2004) were released in May 2004. The ID2004 are based on the approach, structure and methodology that was used to create the previous Indices of Deprivation 2000. The ID2004 updates the ID2000 in two key ways:

- more up-to-date data has been used (mostly 2001 data), and
- new measures have been incorporated as new and improved data sources have become available.

These changes however mean that the two indices cannot be directly compared. In addition many ward boundaries have changed since the release of the 2000 data meaning that straightforward comparisons cannot be made. Therefore change over time cannot be identified.

### This Report

This report presents the results of the Indices of Deprivation 2004 in Harborough district.

It considers the summary measures used to score and rank the district in relation to other Local Authority Districts in England.

It also includes details of different aspects of deprivation affecting smaller areas within the district. A series of maps are included and illustrate where the relatively higher levels of deprivation are located.

### Leicestershire County Report

A report considering the Indices of Deprivation 2004 in more detail across all districts in Leicestershire has also been produced. It is available to download at [www.leics.gov.uk/statistics](http://www.leics.gov.uk/statistics), or by using the contact details below.

### Further Information

Further information is available from [www.odpm.gov.uk](http://www.odpm.gov.uk)

If you require further guidance, please contact:

Sarah Geddes  
Research & Information Team  
Chief Executives Department  
Leicestershire County Council

E: [sgeddes@leics.gov.uk](mailto:sgeddes@leics.gov.uk)

T: 0116 265 8262

## SUMMARY

### Harborough District Summary

ODPM uses six summary measures to rank district authorities in England. The most commonly used measure is the Rank of Average Rank which measures the average levels of deprivation across the district. This shows that Harborough district is ranked 336<sup>th</sup> out of the 354 district authorities in England, where 1=most deprived and 354=least deprived. Table 1 below shows that Harborough district is ranked the least deprived district in Leicestershire.

**Table 1: Comparison with other districts in Leicestershire**

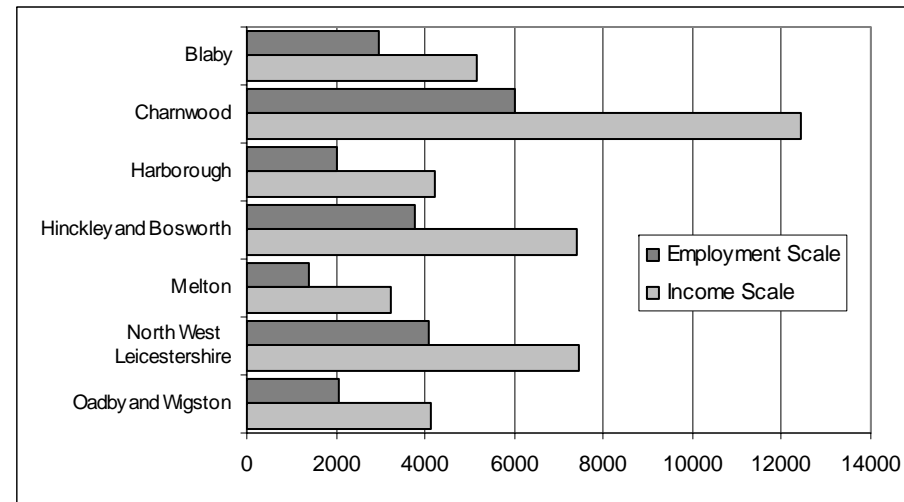
District	Rank of average rank
North West Leicestershire	195
Charnwood	262
Hinckley and Bosworth	275
Melton	293
Oadby and Wigston	304
Blaby	316
<b>Harborough</b>	<b>336</b>

Other measures which are used to rank district authorities include the Rank of Local Concentration. This measures the severity of multiple deprivation in each authority, measuring 'hot spots' of deprivation. Harborough is ranked 334<sup>th</sup> in England showing that the district experiences relatively low levels of deprivation.

The districts are also ranked on an Income and Employment Scale. This measures the number of people who are considered to be either income or employment deprived in each district.

The graph below shows that 4,229 people are income deprived and 2,000 people are employment deprived in Harborough.

**Graph 1: Number of people who are income or employment deprived by district**



The examination of Super Output Area data in each domain highlights the locations where deprivation is concentrated in the district.

## GEOGRAPHY

### Indices of Deprivation: Geography

For the first time, the Indices of Deprivation 2004 have been released at Super Output Area (SOA) lower level – where previous Indices were released at ward level.

Super Output Areas are a new national geography created by the Office for National Statistics. They are created by combining a number of Output Areas which were created for the 2001 Census.

Super Output Areas are small areas of broadly consistent population size across the country, each containing approximately 1,500 people.

The use of Super Output Areas (lower level) as a basis for the Indices enables smaller, sub-ward areas of deprivation to be identified. Such areas may previously have been hidden / masked by the use of ward level data.

Harborough district contains 47 Super Output Areas.

**Table 2: Number of SOAs by area**

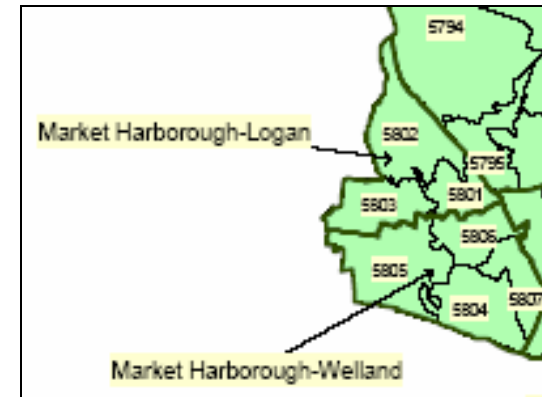
	Number of SOAs
England	32,482
Leicestershire	396
Harborough District	47

In all cases, a ranking of 1 signifies the most deprived area. In respect of the national ranking which is given in each of the following tables, a ranking between 1 and 3,248 denotes that the area is ranked within the 10% most deprived in England, and a ranking between 1 and 6,496 denotes that the area is ranked within the 20% most deprived in England.

Map 1 shows the location of each of the Super Output Areas in Harborough district. Each Super Output Area is identified by a nine digit code, eg. E0102**5805**. For ease of use, Map 1 lists only the last four digits).

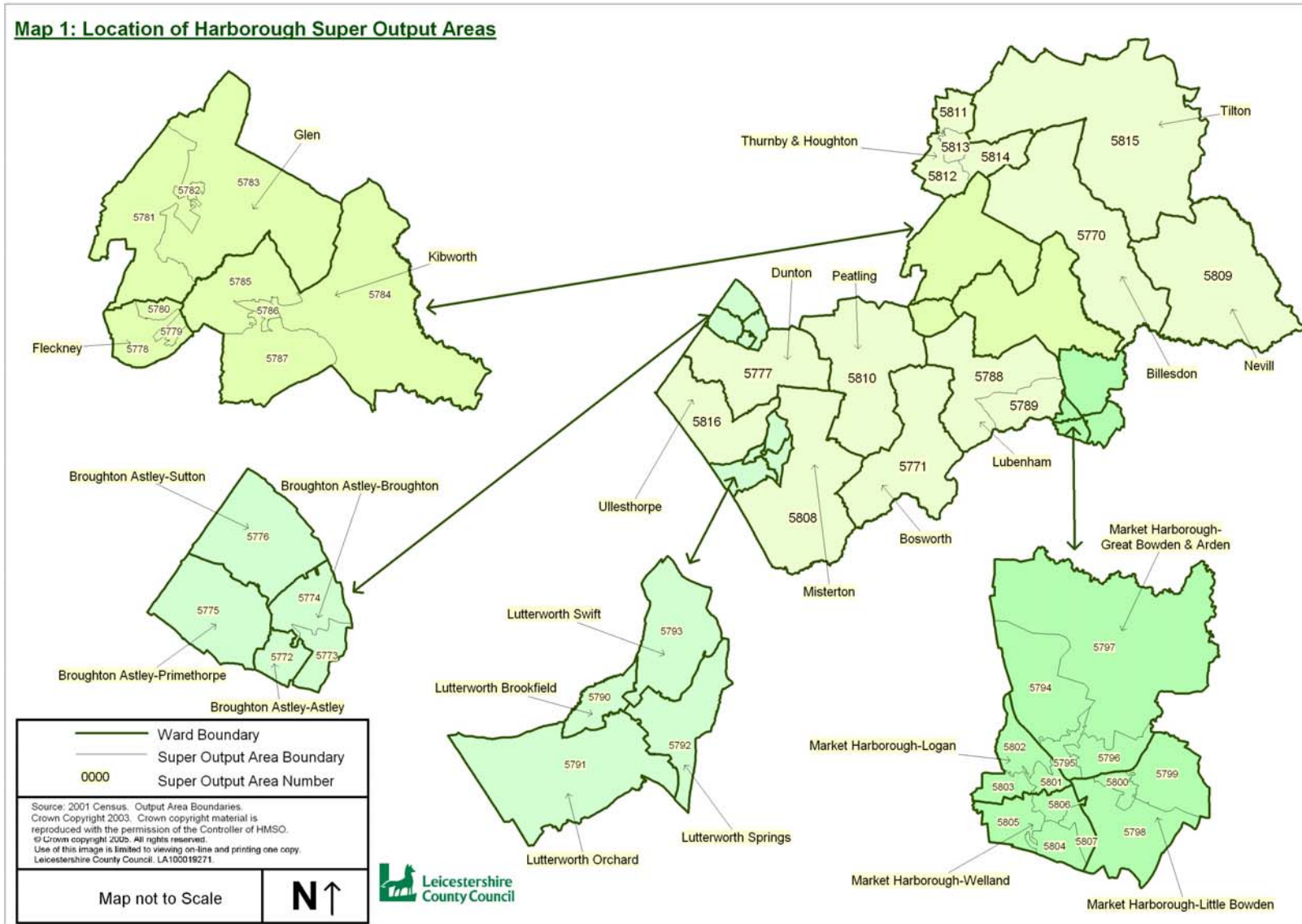
The picture below shows how a number of Super Output Areas (normally between two and five) are located within ward boundaries, so for example Market Harborough – Logan ward contains three SOAs – 5801, 5802 and 5803.

**Picture 1: Extract of Map 1 showing SOAs within ward boundaries**



For information, this report also contains the ward in which each SOA is located. However, where a ward name is given, users should be aware that it relates only to part of the ward, and not necessarily the entire ward.

**MAP 1: LOCATION OF SOAS**



## LOCAL DATA

## LOCAL DATA

### Local data

The Index of Multiple Deprivation 2004 (IMD2004) combines indicators across seven domains into a single deprivation score and rank for each Super Output Area. The domains are shown below:

- Income Deprivation
- Employment Deprivation
- Health Deprivation and Disability
- Education, Skills and Training Deprivation
- Barriers to Housing and Services
- Living Environment Deprivation
- Crime

There are also two supplementary domains which measure income deprivation affecting children (IDAC) and income deprivation affecting older people (IDAOP).

These domains are given the following weighting when calculating the overall Index of Multiple Deprivation:

	Weighting
Income Deprivation	22.5%
Employment Deprivation	22.5%
Health Deprivation and Disability	13.5%
Education, Skills and Training Deprivation	13.5%
Barriers to Housing and Services	9.3%
Living Environment Deprivation	9.3%
Crime	9.3%

The following sections consider the relative levels of deprivation experienced in each domain in Harborough district.

Information on the indicators used to compile each domain is listed along with a table showing the ten most deprived SOAs in the district in each domain.

For comparison, some tables also include the ranking in Leicestershire (where 1=most deprived, 396=least deprived) and in England (where 1=most deprived, 32,482=least deprived).

Each section also includes a graph which shows the number of Super Output Areas in each domain and how they are ranked within England. This gives a visual representation of the spread of relative deprivation in each domain in the district, showing how many areas are in the 10% most deprived and 10% least deprived in England.

This information is accompanied by Maps 2 to 11 which show the location of the most deprived areas in each domain in the district. The 10% most deprived and 10% least deprived areas in Harborough district are highlighted on the maps.

A comprehensive list of national ranks for each Super Output Area in each domain is included in appendix 1.

## INDEX OF MULTIPLE DEPRIVATION

### Indicators

The Index of Multiple Deprivation combines the indicators across the seven domains (listed below) into a single deprivation score and rank for each Super Output Area

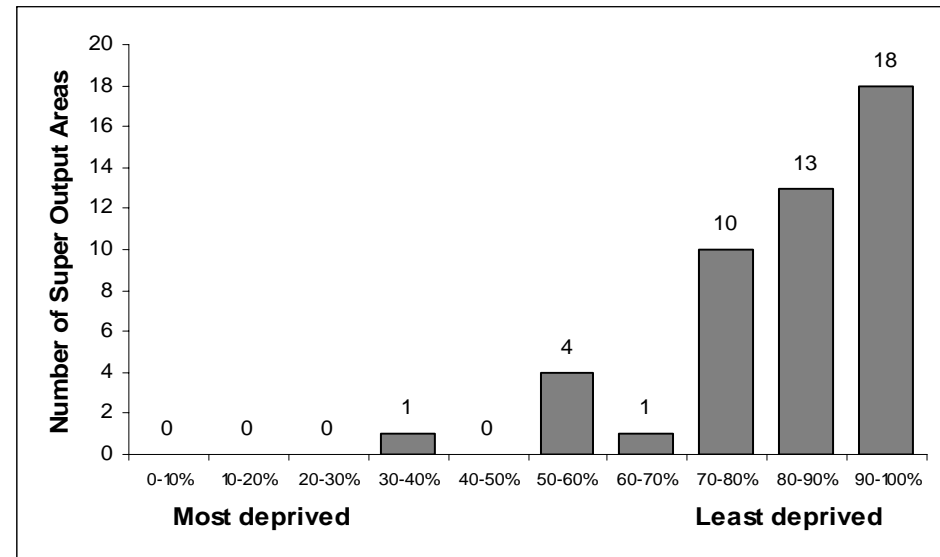
- Income
- Employment
- Health & Disability
- Education & Skills
- Barriers to Housing & Services
- Living Environment
- Crime

### Commentary

The Index of Multiple Deprivation considers all aspects of deprivation experienced by particular areas. Overall levels of deprivation in Harborough District are low, with only one Super Output Area ranked in the 50% most deprived in England. The majority of areas are ranked within the 20% least deprived areas in England.

Part of Market Harborough – Welland ward is considered to be the most deprived in the district – shown on Map 2. However, it is ranked only 11,662 most deprived in England, and 29<sup>th</sup> most deprived in the county. The other areas in the district that are ranked highly in the district include parts of Market Harborough – Great Bowden and Kibworth wards.

**Graph 2: Spread of National Ranking of all SOAs in Harborough**

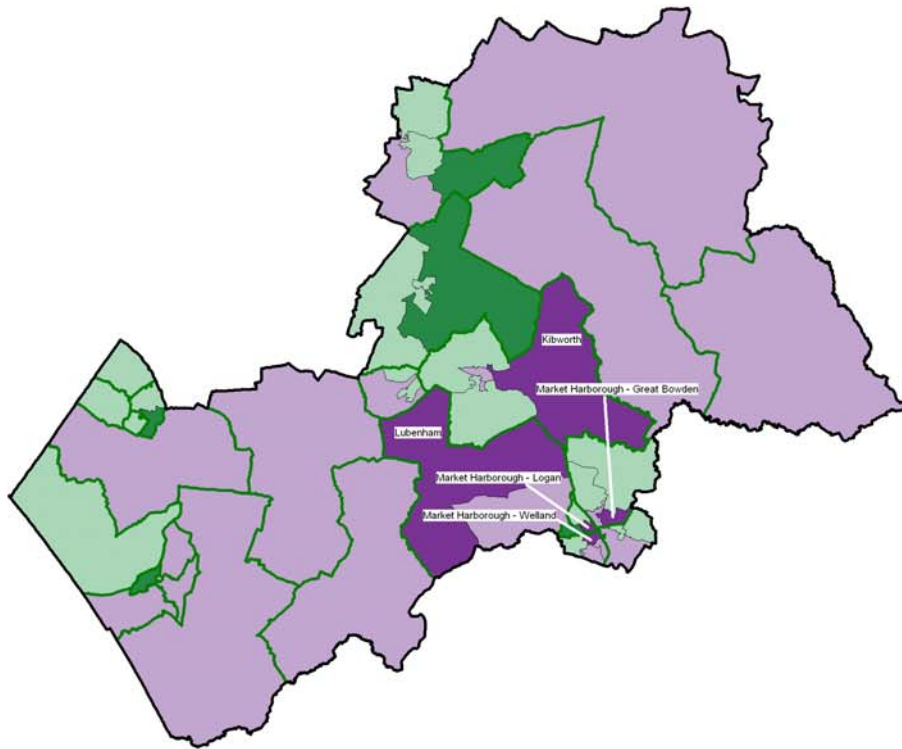


**Table 3: Ten most deprived areas in Harborough**

SOA	Ward	Score	District Rank	County Rank	National Rank
E01025806	Mkt Harborough - Welland	23.11	1	29	11,662
E01025796	Mkt Harborough - Gt Bowden	16.70	2	67	16,505
E01025784	Kibworth	15.16	3	85	17,977
E01025788	Lubenham	14.27	4	97	18,872
E01025801	Mkt Harborough - Logan	13.99	5	103	19,169
E01025815	Tilton	12.08	6	135	21,387
E01025789	Lubenham	10.50	7	167	23,270
E01025807	Mkt Harborough - Welland	10.47	8	169	23,316
E01025770	Billesdon	10.27	9	177	23,583
E01025793	Lutterworth Swift	9.40	10	196	24,637

**MAP 2: INDEX OF MULTIPLE DEPRIVATION**

**Map 2**  
**Index of Multiple Deprivation**  
 highlighting the 10% most deprived Super Output Areas in Harborough



**Levels of Multiple Deprivation in Harborough**  
 (Number of Super Output Areas)

- Top 10% - Most Deprived**
- 10% to 50%**
- 50% to 90%**
- Bottom 10% - Least Deprived**

**10% Most Deprived**  
**Harborough Super Output Areas**

SOA Code	Ward
1.5806	Market Harborough - Welland
2.5796	Market Harborough - Great Bowden
3.5784	Kibworth
4.5788	Lubenham
5.5801	Market Harborough - Logan

- District Boundary**
- Electoral Ward Boudaries**
- Super Output Areas**

Source: 2001 Census, Output Area Boundaries, Crown copyright 2003. Crown copyright material is reproduced with the permission of the Controller of HMSO.

© Crown copyright 2005. All rights reserved. Use of this image is limited to viewing on-line and printing one copy. Leicestershire County Council, LA00010271

Produced by R&I Team, Chief Executives, Leicestershire County Council

Source: Office for Deputy Prime Minister 2004



Each Super Output Area has an average of about 1,500 people

## INCOME DEPRIVATION

### Indicators

The income deprivation domain measures the proportion of the population living below 60% of median income. A number of indicators are used to compile this domain. These include:

- Adults and children in Income Support households
- Adults and children in Income Based Job Seekers Allowance households
- Adults and children in Working Family Tax Credit households
- Adults and children in Disabled Persons Tax Credit households
- Supported asylum seekers in receipt of subsistence only and accommodation support

### Commentary

The score gives the proportion of the population who are considered to be income deprived. In Harborough district there are **4,229 people** who are considered to be income deprived. Graph 3 shows the spread of rankings for all Super Output Areas in the district. It shows that only four areas are ranked within the 50% most deprived in England, one of which is within the 30% most deprived.

Table 4 lists the number of people in the most deprived Super Output Areas who are income deprived.

Map 3 shows the most deprived areas in the district in this domain. Parts of Market Harborough – Welland and Market Harborough – Great Bowden wards are ranked as being the most deprived, and each contain over 200 people who are income deprived.

Graph 3: Spread of National Ranking of all SOAs in Harborough

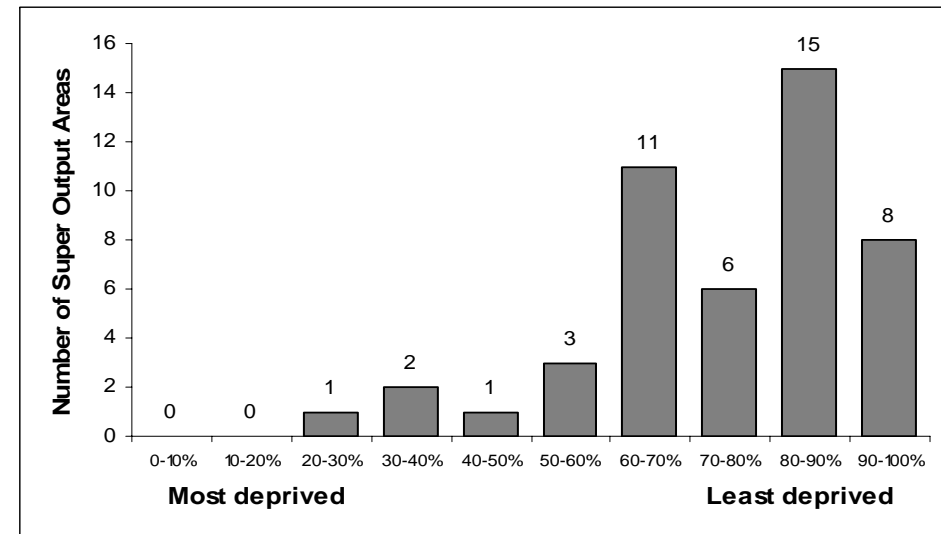
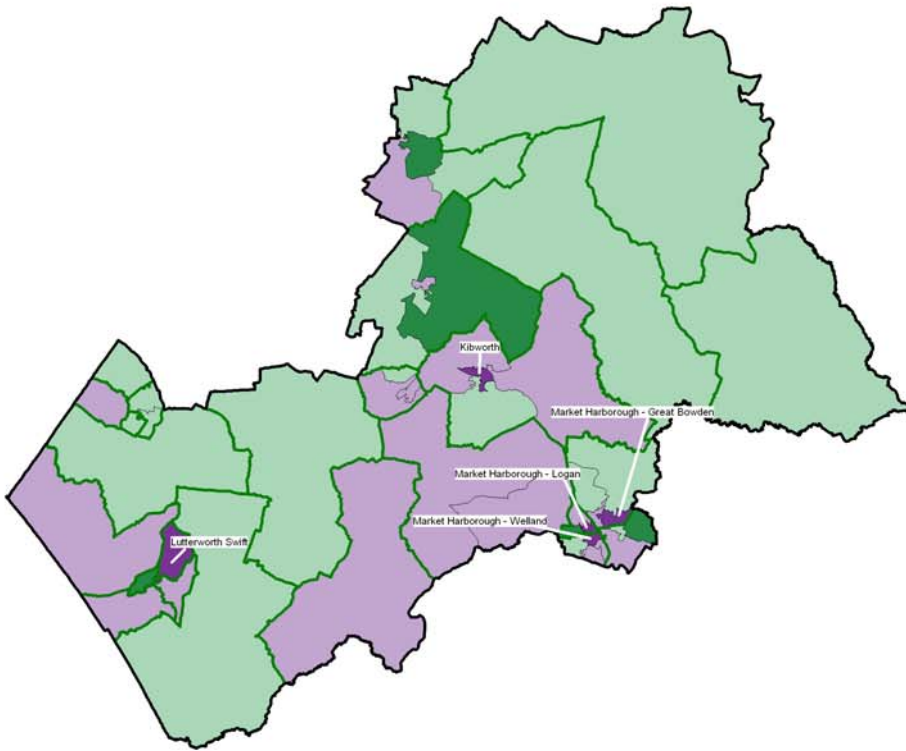


Table 4: Ten most deprived areas in Harborough

SOA	Ward	Score	Total pop	Number income deprived	National Rank
E01025806	Mkt Harborough - Welland	0.21	1,475	310	7,163
E01025796	Mkt Harborough - Gt Bowden	0.15	1,713	257	10,856
E01025801	Mkt Harborough - Logan	0.13	1,149	149	12,473
E01025786	Kibworth	0.10	1,566	157	15,589
E01025793	Lutterworth Swift	0.09	1,853	167	17,343
E01025792	Lutterworth Springs	0.09	2,085	188	17,726
E01025807	Mkt Harborough - Welland	0.08	1,240	99	18,912
E01025788	Lubenham	0.07	1,134	79	20,054
E01025791	Lutterworth Orchard	0.07	2,152	151	20,234
E01025778	Fleckney	0.07	1,584	111	20308

**MAP 3: INCOME DEPRIVATION**

**Map 3**  
**Income Deprivation**  
 highlighting the 10% most deprived Super Output Areas in Harborough



**Levels of Income Deprivation in Harborough**  
 (Number of Super Output Areas)

- Top 10% - Most Deprived
- 10% to 50%
- 50% to 90%
- Bottom 10% - Least Deprived

**10% Most Deprived**  
 Harborough Super Output Area

SOA Code	Ward
1.5806	Market Harborough - Welland
2.5796	Market Harborough - Great Bowden
3.5801	Market Harborough - Logan
4.5786	Kibworth
5.5793	Lutterworth Swift

- District Boundary
- Electoral Ward Boundaries
- Super Output Areas

Source: 2001 Census, Output Area Boundaries. Crown copyright 2003. Crown copyright material is reproduced with the permission of the Controller of HMSO.  
 © Crown copyright 2005. All rights reserved. Use of this image is limited to viewing on-line and printing one copy. Leicestershire County Council: LA100010371.

Produced by RSI Team, Chief Executives  
 Leicestershire County Council

Source: Office for Deputy Prime Minister 2004

Each Super Output Area has an average of about 1,500 people



## INCOME DEPRIVATION AFFECTING CHILDREN

### Indicators

This is a supplementary indicator that measures the proportion of children under 16 in an area who live in income deprived households.

### Commentary

Overall, there are 1,147 children in Harborough district living in households which are considered to be income deprived. This accounts for 7.4% of the children in the district aged under 16 years. Almost half of these children live in the ten most deprived Super Output Areas.

Of the 4,229 people who are income deprived in Harborough District, 27% are aged 16 or under.

Map 4 shows the locations of the Super Output Areas that are ranked as most deprived in the district. It should be remembered that only three Super Output Areas within the district are ranked in the 50% most deprived in England – as shown on graph 4.

The three wards with the highest numbers of children living in households which are income deprived are in Market Harborough – Welland (172 children), Market Harborough – Great Bowden (126 children) and Kibworth (102 children).

Graph 4: Spread of National Ranking of all SOAs in Harborough

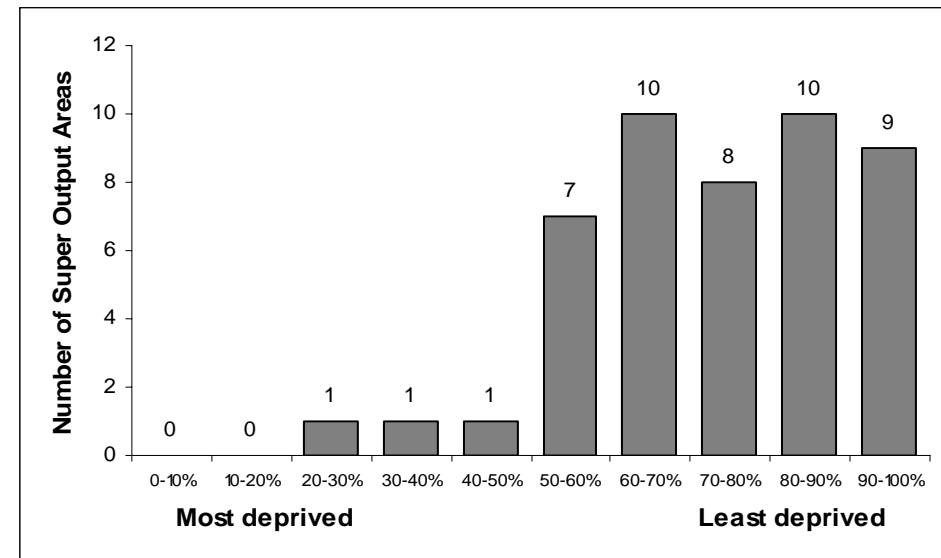
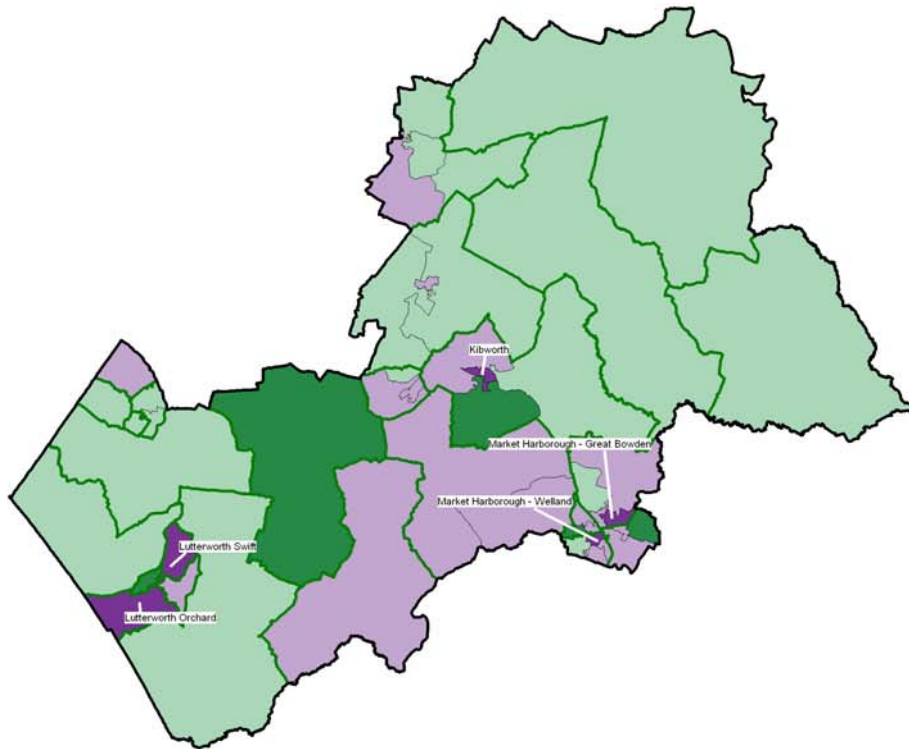


Table 5: Ten most deprived areas in Harborough

SOA	Ward	Score	Total <16yrs	No deprived	National Rank
E01025806	Mkt Harborough - Welland	0.28	342	97	8,621
E01025796	Mkt Harborough - Gt Bowden	0.19	360	70	12,856
E01025786	Kibworth	0.16	358	57	15,099
E01025791	Lutterworth Orchard	0.14	389	55	16,348
E01025793	Lutterworth Swift	0.13	398	53	17,078
E01025802	Mkt Harborough - Logan	0.13	273	36	17,099
E01025804	Mkt Harborough - Welland	0.13	240	31	17,441
E01025792	Lutterworth Springs	0.11	392	44	18,799
E01025795	Mkt Harborough - Gt Bowden	0.11	227	24	19,292
E01025807	Mkt Harborough - Welland	0.11	277	29	19,380

**MAP 4: INCOME DEPRIVATION AFFECTING CHILDREN**

**Map 4**  
**Income Deprivation Affecting Children**  
 highlighting the 10% most deprived Super Output Areas in Harborough



**Levels of Income deprivation affecting children in Harborough**  
 (Number of Super Output Areas)

- Top 10% - Most Deprived
- 10% to 50%
- 50% to 90%
- Bottom 10% - Least Deprived

**10% Most Deprived**  
**Harborough Super Output Areas**

SOA Code	Ward
1.5806	Market Harborough - Welland
2.5796	Market Harborough - Great Bowden
3.5786	Kibworth
4.5791	Lutterworth Orchard
5.5793	Lutterworth Swift

- District Boundary
- Electoral Ward Boundaries
- Super Output Areas

Source: 2001 Census, Output Area Boundaries.  
 Crown copyright 2003. Crown copyright material  
 is reproduced with the permission of the Controller  
 of HMSO.

© Crown copyright 2005. All rights reserved.  
 Use of this image is limited to viewing on-line and printing one copy.  
 Leicestershire County Council: LA100010371

Produced by R&I Team, Chief Executives  
 Leicestershire County Council

Source: Office for Deputy Prime Minister 2004

Each Super Output Area has an average of about 1,500 people



**INCOME DEPRIVATION AFFECTING OLDER PEOPLE**

**Indicators**

This is a supplementary indicator that measures the proportion of people aged over 60 years in an area who live in income deprived households.

**Commentary**

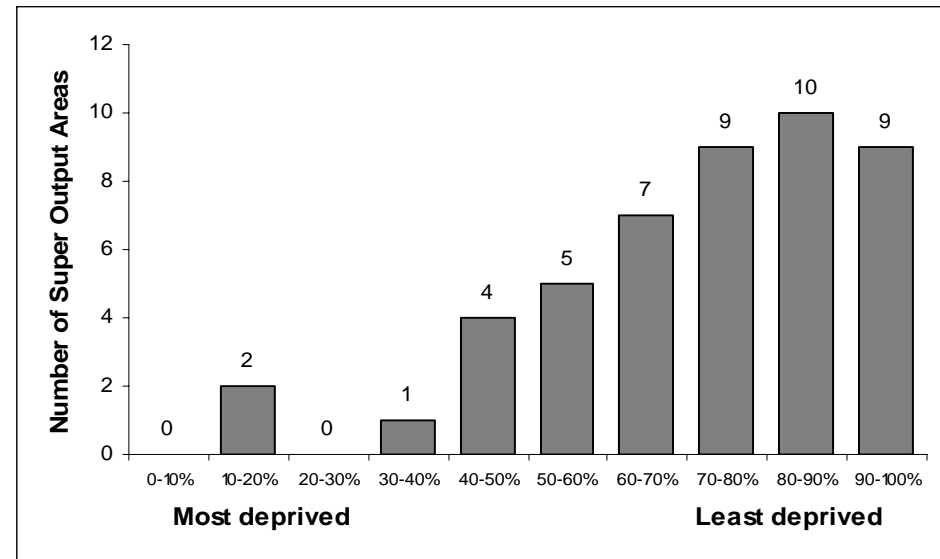
Overall there are 1,515 people aged over 60 living in income deprived households. This accounts for 9.5% of the people aged over 60 in the district.

It also shows that of the 4,229 people who are income deprived in Harborough district, 35.8% are aged over 60.

Graph 5 shows that there are 7 Super Output Areas ranked within the 50% most deprived in England in this domain. Two of these areas, part of Market Harborough – Logan and Market Harborough – Welland wards are ranked within the 20% most deprived in England.

Map 5 shows the location of the areas which are ranked as most deprived in the district. They are located in parts of Market Harborough and Lutterworth.

**Graph 5: Spread of National Ranking of all SOAs in Harborough**

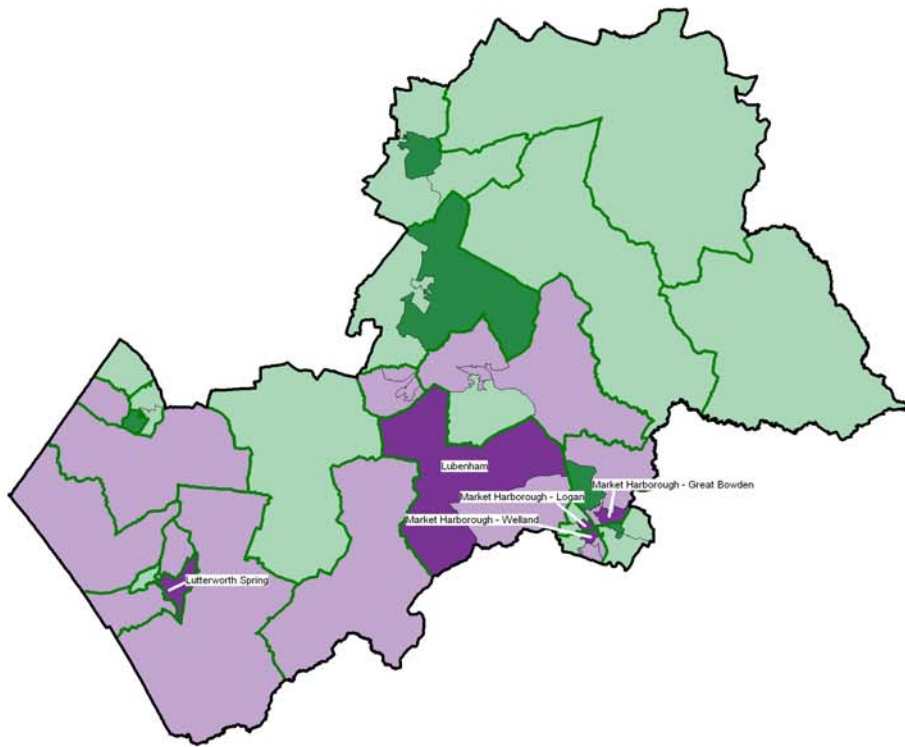


**Table 6: Ten most deprived areas in Harborough**

SOA	Ward	Score	Total >60yrs	Number deprived	National Rank
E01025801	Mkt Harborough - Logan	0.31	302	92	3,327
E01025806	Mkt Harborough - Welland	0.24	437	107	6,294
E01025796	Mkt H'borough - Gt Bowden	0.17	406	71	11,702
E01025792	Lutterworth Springs	0.16	513	82	13,146
E01025788	Lubenham	0.14	280	38	15,949
E01025793	Lutterworth Swift	0.14	311	42	16,053
E01025778	Fleckney	0.14	217	29	16,118
E01025808	Misterton	0.13	496	65	16,727
E01025807	Mkt Harborough - Welland	0.13	167	21	17,385
E01025816	Ullesthorpe	0.12	479	58	18,029

**MAP 5: INCOME DEPRIVATION AFFECTING OLDER PEOPLE**

**Map 5**  
**Income Deprivation Affecting Older People**  
**highlighting the 10% most deprived Super Output Areas in Harborough**



**Levels of Income Deprivation Affecting Older People in Harborough**  
 (Number of Super Output Areas)

- Top 10% - Most Deprived**
- 10% to 50%**
- 50% to 90%**
- Bottom 10% - Least Deprived**

**10% Most Deprived**  
**Harborough Super Output Areas**

SOA Code	Ward
1.5801	Market Harborough - Logan
2.5806	Market Harborough - Welland
3.5796	Market Harborough - Great Bowden
4.5792	Lutterworth Spring
5.5788	Lubbenham

- District Boundary**
- Electoral Ward Boundaries**
- Super Output Areas**

Source: 2001 Census, Output Area Boundaries.  
 Crown copyright 2003. Crown copyright material is reproduced with the permission of the Controller of HMSO.  
 © Crown copyright 2005. All rights reserved.  
 Use of this image is limited to viewing on-line and printing one copy.  
 Leicestershire County Council, LA10015271  
 Produced by R&I Team, Chief Executives  
 Leicestershire County Council  
 Source: Office for Deputy Prime Minister 2004

Each Super Output Area has an average of about 1,500 people

## EMPLOYMENT DEPRIVATION

### Indicators

The employment deprivation domain measures the proportion of the working age population that are involuntarily excluded from the world of work. It includes both those who are registered as unemployed, but also includes elements of the more 'hidden unemployed' such as those who are out of the workforce through sickness. The indicators used are:

- Unemployment claimant count
- Incapacity Benefit claimants
- Severe Disablement Allowance claimants
- Participants in New Deal

### Commentary

In Harborough district, there are **2,000** people who are employment deprived.

There are three Super Output Areas which are ranked within the 50% most deprived in England: parts of Market Harborough – Welland, Market Harborough – Great Bowden and Kibworth wards. Only two of these areas are ranked within the 50 most deprived in the county.

Graph 6: Spread of National Ranking of all SOAs in Harborough

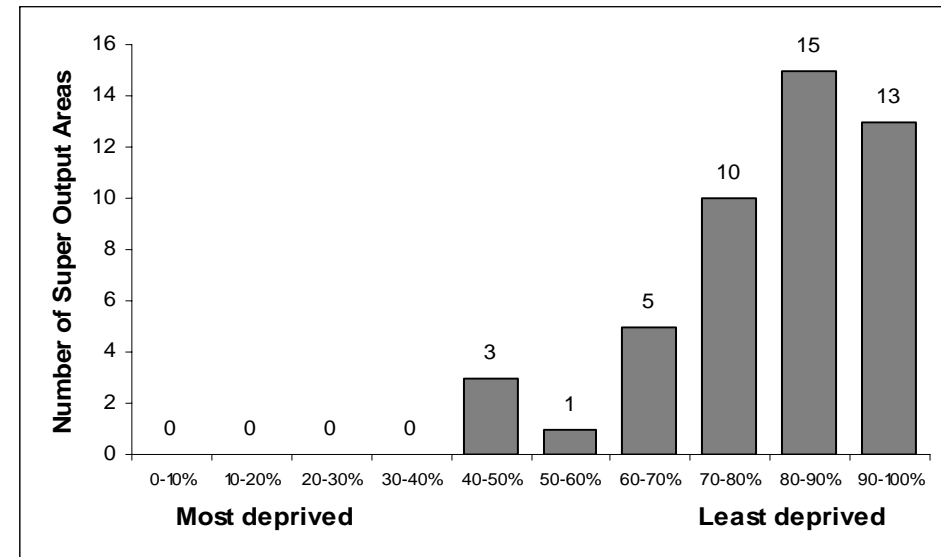
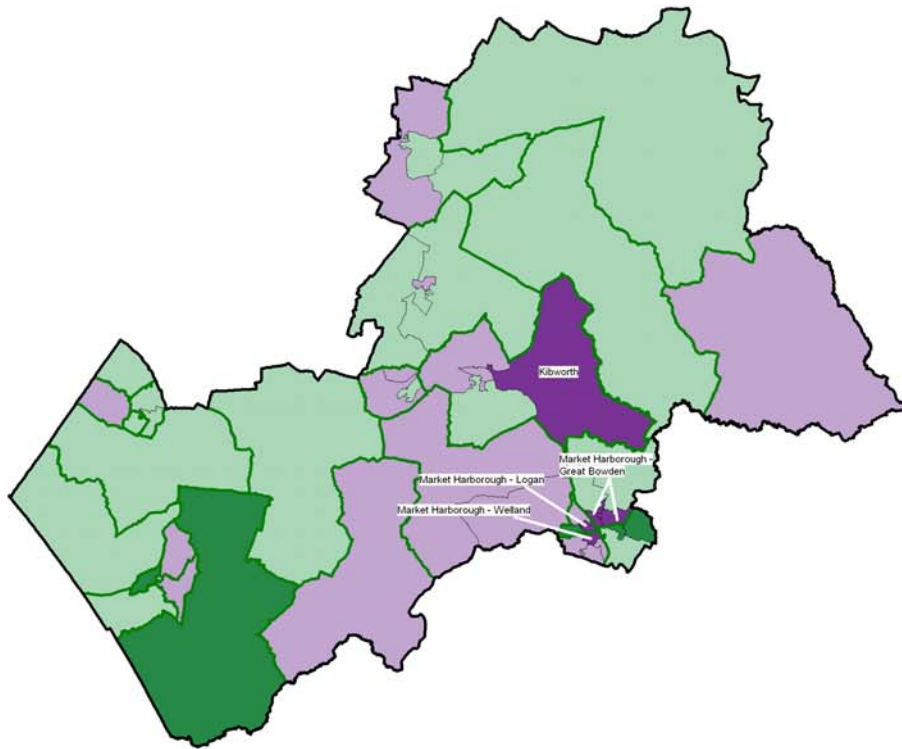


Table 7: Ten most deprived areas in Harborough

SOA	Ward	Score	District Rank	County Rank	National Rank
E01025806	Mkt Harborough - Welland	0.10	1	38	13,080
E01025796	Mkt Harborough - Gt Bowden	0.10	2	46	13,788
E01025784	Kibworth	0.09	3	62	15,253
E01025801	Mkt Harborough - Logan	0.07	4	126	19,055
E01025795	Mkt Harborough - Gt Bowden	0.07	5	142	20,303
E01025789	Lubenham	0.06	6	154	21,134
E01025804	Mkt Harborough - Welland	0.06	7	164	21,829
E01025807	Mkt Harborough - Welland	0.06	8	173	22,193
E01025793	Lutterworth Swift	0.06	9	178	22,659
E01025771	Bosworth	0.06	10	187	23,001

**MAP 6: EMPLOYMENT DEPRIVATION**

**Map 6**  
**Employment Deprivation**  
 highlighting the 10% most deprived Super Output Areas in Harborough



**Levels of Employment Deprivation in Harborough**  
 (Number of Super Output Areas)

- Top 10% - Most Deprived
- 10% to 50%
- 50% to 90%
- Bottom 10% - Least Deprived

**10% Most Deprived**  
 Harborough Super Output Areas

SOA Code	Ward
1.5806	Market Harborough - Welland
2.5796	Market Harborough - Great Bowden
3.5784	Kibworth
4.5801	Market Harborough - Logan
5.5795	Market Harborough - Great Bowden

- District Boundary
- Electoral Ward Boudaries
- Super Output Areas

Source: 2001 Census, Output Area Boundaries.  
 Crown copyright: 2003. Crown copyright material  
 is reproduced with the permission of the Controller  
 of HMSO

© Crown copyright 2005. All rights reserved.  
 Use of this image is limited to viewing on line and printing one copy.  
 Leicestershire County Council, LA020010271

Produced by R&I Team, Chief Executives  
 Leicestershire County Council

Source: Office for Deputy Prime Minister 2004



Each Super Output Area has an average of about 1,500 people

## HEALTH DEPRIVATION AND DISABILITY

### Indicators

This domain identifies areas with relatively high rates of people who die prematurely or whose quality of life is impaired by poor health or who are disabled. The indicators used to compile this domain include:

- Years of potential life lost
- Comparative Illness and Disability Ratio
- Measures of emergency admissions to hospital
- Measure of adults under 60 suffering from mood or anxiety disorders

### Commentary

Levels of health deprivation in Harborough district are relatively low with no areas in the 50% most deprived in England. Indeed, over two thirds of the Super Output Areas in the district are ranked within the 20% least deprived in England.

Map 7 shows where the relative levels of health deprivation are higher, in parts of Market Harborough – Welland, Market Harborough – Great Bowden, Market Harborough – Logan and Lubenham wards.

Graph 7: Spread of National Ranking of all SOAs in Harborough

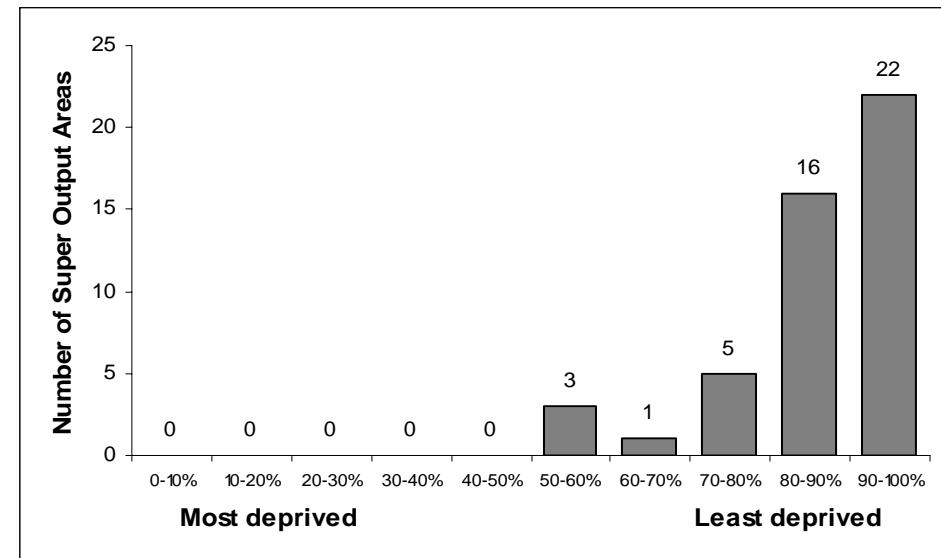
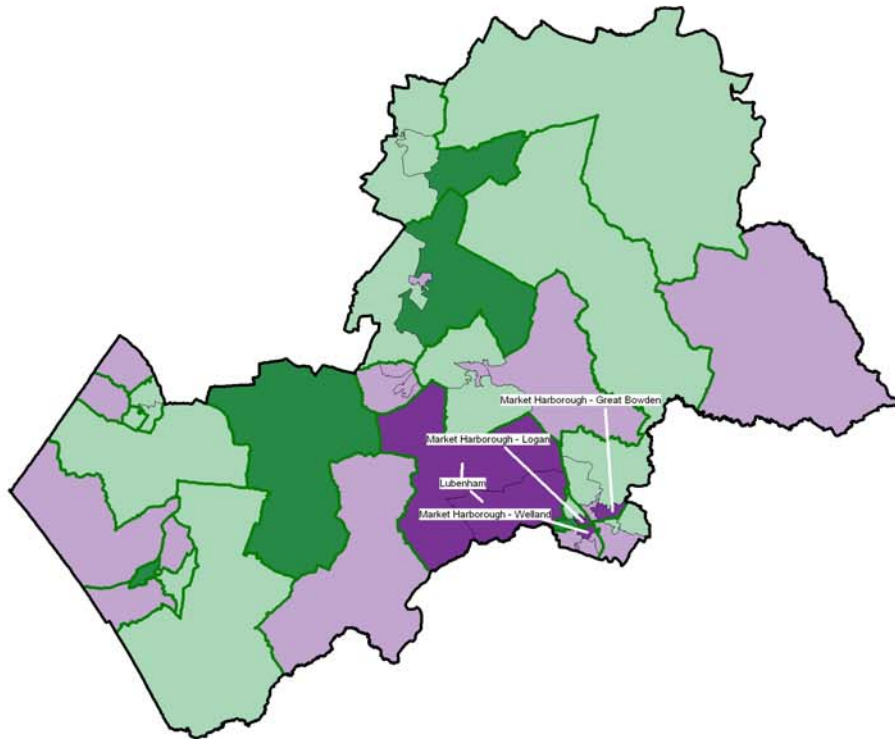


Table 8: Ten most deprived areas in Harborough

SOA	Ward	Score	District Rank	County Rank	National Rank
E01025806	Mkt Harborough - Welland	-0.05	1	49	16,686
E01025796	Mkt Harborough - Gt Bowden	-0.12	2	57	17,644
E01025801	Mkt Harborough - Logan	-0.15	3	68	18,189
E01025789	Lubenham	-0.33	4	113	20,656
E01025788	Lubenham	-0.51	5	152	22,938
E01025804	Mkt Harborough - Welland	-0.51	6	154	22,983
E01025807	Mkt Harborough - Welland	-0.56	7	163	23,488
E01025784	Kibworth	-0.66	8	186	24,744
E01025791	Lutterworth Orchard	-0.77	9	221	25,877
E01025779	Fleckney	-0.80	10	231	26,262

**MAP 7: HEALTH DEPRIVATION AND DISABILITY**

**Map 7**  
**Health Deprivation and Disability**  
 highlighting the 10% most deprived Super Output Areas in Harborough



**Levels of Health and Disability Deprivation in Harborough**  
 (Number of Super Output Areas)

- Top 10% - Most Deprived
- 10% to 50%
- 50% to 90%
- Bottom 10% - Least Deprived

10% Most Deprived  
 Harborough Super Output Areas

SOA Code	Ward
1.5806	Market Harborough - Welland
2.5796	Market Harborough - Great Bowden
3.5801	Market Harborough - Logan
4.5789	Lubenham
5.5788	Lubenham

- District Boundary
- Electoral Ward Boundaries
- Super Output Areas

Source: 2001 Census, Output Area Boundaries.  
 Crown copyright 2003. Crown copyright material  
 is reproduced with the permission of the Controller  
 of HMSO.

© Crown copyright 2005. All rights reserved.  
 Use of this map is limited to viewing on-line and printing one copy.  
 Leicestershire County Council LA100019271

Produced by R&I Team, Chief Executives  
 Leicestershire County Council

Source: Office for Deputy Prime Minister 2004

Each Super Output Area has an average of about 1,500 people



**EDUCATION, SKILLS AND TRAINING**

**Indicators**

This domain captures the extent of deprivation in education, skills and training of people living in a local area. The indicators used are:

Children / young people

- Average points score of pupils at Key Stage 2
- Average points score of pupils at Key Stage 3
- Average points score of pupils at Key Stage 4
- Proportion of young people not staying on in school or further education above 16
- Secondary school absence rate
- Proportion of those aged under 21 not entering higher education

Skills

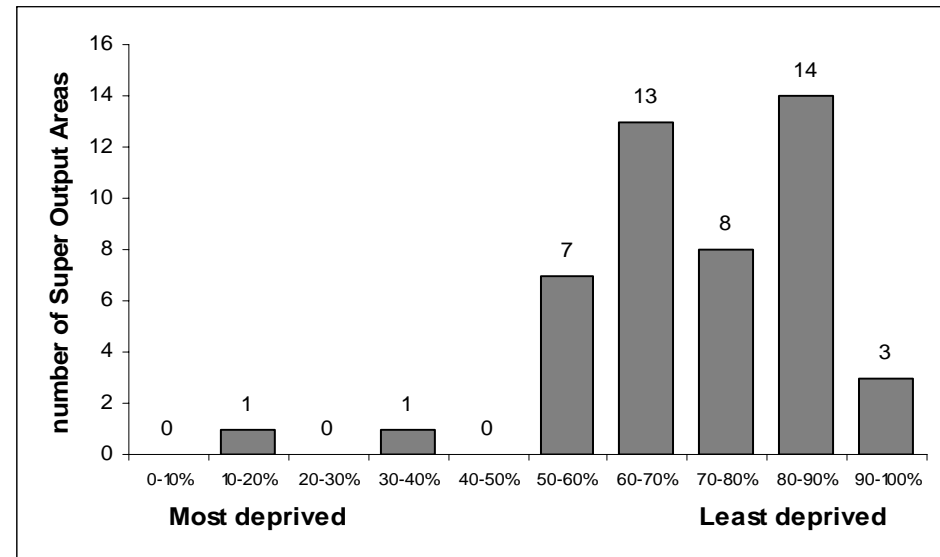
- Proportion of working age adults with no or low qualifications

**Commentary**

Levels of deprivation are relatively low in this domain, with only two Super Output Areas ranked within the 50% most deprived in England. The highest levels of deprivation are experienced in part of Market Harborough – Welland ward which is ranked in the top 20% most deprived in England. It is also ranked within the 30 most deprived areas in the county.

Relative levels of deprivation are shown on Map 8.

**Graph 8: Spread of National Ranking of all SOAs in Harborough**

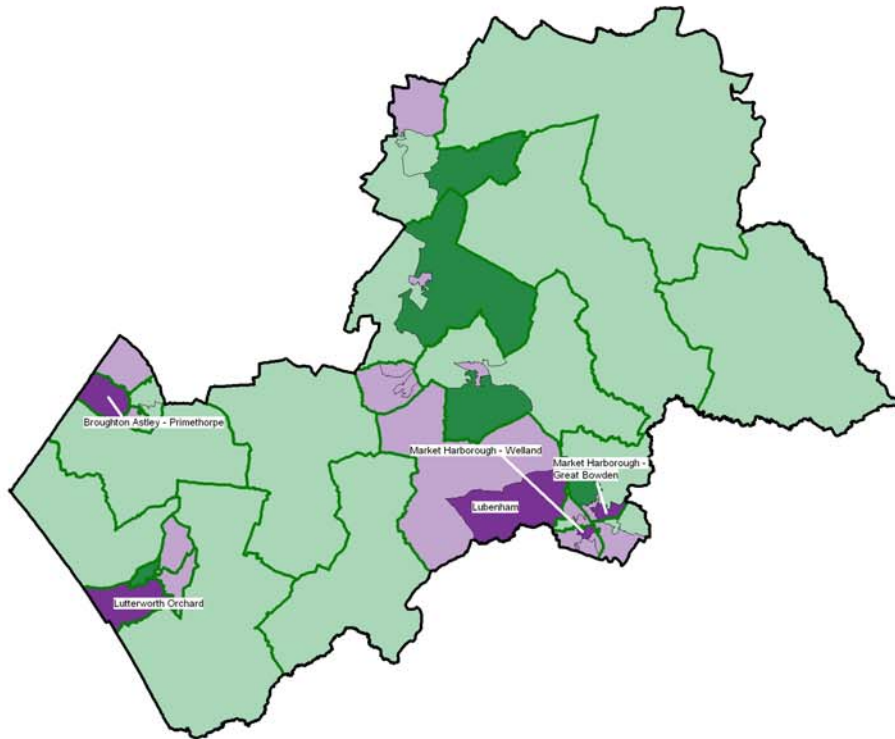


**Table 9: Ten most deprived areas in Harborough**

SOA	Ward	Score	District Rank	County Rank	National Rank
E01025806	Mkt Harborough - Welland	36.35	1	29	6,112
E01025796	Mkt Harborough - Gt Bowden	25.03	2	81	10,482
E01025775	B'ton Astley - Primethorpe	15.35	3	185	16,863
E01025789	Lubenham	14.15	4	198	17,857
E01025791	Lutterworth Orchard	13.87	5	201	18,080
E01025778	Fleckney	13.65	6	203	18,268
E01025804	Mkt Harborough - Welland	13.56	7	205	18,351
E01025793	Lutterworth Swift	13.35	8	209	18,512
E01025779	Fleckney	13.22	9	212	18,632
E01025795	Mkt Harborough - Gt Bowden	12.12	10	228	19,670

**MAP 8: EDUCATION, SKILLS AND TRAINING**

**Map 8**  
**Education, Skills and Training Deprivation**  
**highlighting the 10% most deprived Super Output Areas**



**Levels of Education, Skills and Training Deprivation in Harborough**  
 (Number of Super Output Areas)

- Top 10% - Most Deprived**
- 10% to 50%**
- 50% to 90%**
- Bottom 10% - Least Deprived**

10% Most Deprived  
 Harborough Super Output Areas

SOA Code	Ward
1.5806	Market Harborough - Welland
2.5796	Market Harborough - Great Bowden
3.5775	Broughton Astley - Primethorpe
4.5789	Lubenham
5.5791	Lutterworth Orchard

- District Boundary**
- Electoral Ward Boundaries**
- Super Output Areas**

Source: 2001 Census, Output Area Boundaries.  
 Crown copyright 2003. Crown copyright material  
 is reproduced with the permission of the Controller  
 of HMSO.

© Crown copyright 2005. All rights reserved.  
 Use of this image is limited to viewing on-line and printing one copy.  
 Leicestershire County Council LA100019171

Produced by R&I Team, Chief Executives  
 Leicestershire County Council

Source: Office for Deputy Prime Minister 2004



Each Super Output Area has an average of about 1,500 people

## BARRIERS TO HOUSING AND SERVICES

### Indicators

This domain measures the barriers faced by the local population relating to housing along with a measure of the distance needed to travel to key local services. The indicators used are:

#### Wider Barriers

- Household overcrowding
- Percentage of households with assistance under the homeless provisions of housing legislation
- Difficulty of access to owner occupation

#### Geographical Barriers

- Road distance to GP premises
- Road distance to a supermarket or convenience store
- Road distance to a primary school
- Road distance to a Post Office

### Commentary

The district experiences higher levels of deprivation in this domain than in any other. There are 17 Super Output Areas ranked within the 50% most deprived in England, 6 of these within the 10% most deprived. The district also has four of the five most deprived areas in the county in this domain.

The more deprived areas are shown on Map 9. They are all located in the more rural parts of the district and reflect the more restricted access to key local services experienced by residents.

Graph 9: Spread of National Ranking of all SOAs in Harborough

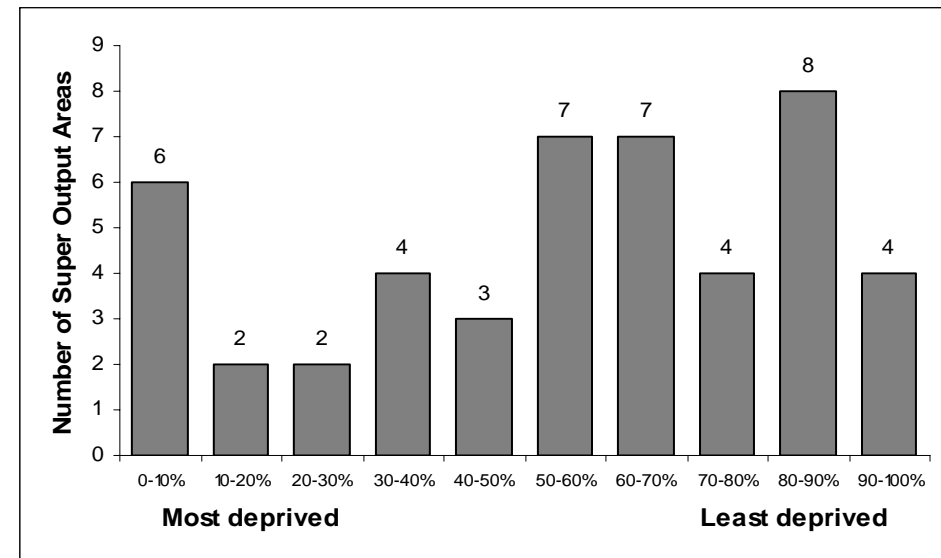
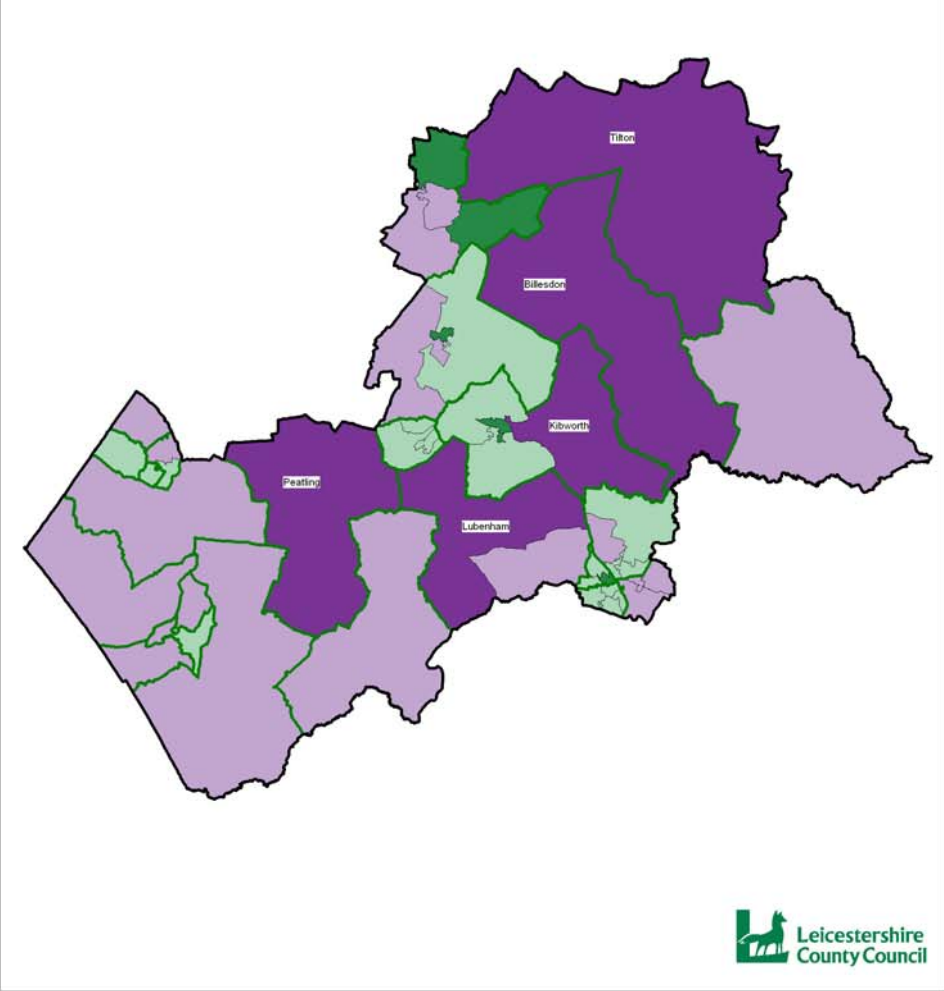


Table 10: Ten most deprived areas in Harborough

SOA	Ward	Score	District Rank	County Rank	National Rank
E01025815	Tilton	49.22	1	1	394
E01025784	Kibworth	43.53	2	3	1,325
E01025770	Billesdon	43.50	3	4	1,331
E01025788	Lubenham	43.08	4	5	1,423
E01025810	Peatling	38.85	5	10	2,597
E01025808	Misterton	38.29	6	12	2,801
E01025809	Nevill	32.57	7	20	5,547
E01025777	Dunton	32.35	8	21	5,672
E01025799	Mkt Harborough - Little B'den	28.50	9	32	8,245
E01025771	Bosworth	26.98	10	43	9,561

**MAP 9: BARRIERS TO HOUSING AND SERVICES**

**Map 9**  
**Barriers to Housing and Services**  
 highlighting the 10% most deprived Super Output Areas in Harborough



**Levels of Housing and Services Deprivation for Harborough**  
 (Number of Super Output Areas)

- Top 10% - Most Deprived
- 10% to 50%
- 50% to 90%
- Bottom 10% - Least Deprived

**10% Most Deprived**  
 Harborough Super Output Areas

SOA Code	Ward
1.5815	Tilton
2.5784	Kibworth
3.5770	Billesdon
4.5788	Lubenham
5.5810	Peatling

- District Boundary
- Electoral Ward Boundaries
- Super Output Areas

Source: 2001 Census, Output Area Boundaries. Crown copyright 2003. Crown copyright material is reproduced with the permission of the Controller of HMSO.  
 © Crown copyright 2005. All rights reserved.  
 Use of this image is limited to viewing on-line and printing one copy.  
 Leicestershire County Council. LA100010271.

Produced by R&I Team, Chief Executives  
 Leicestershire County Council

Source: Office for Deputy Prime Minister 2004

Each Super Output Area has an average of about 1,500 people



## LIVING ENVIRONMENT

### Indicators

This domain looks at both the indoor and outdoor living environment. The indicators used include:

#### Indoor Living Environment

- Social and private housing in poor condition
- Houses without central heating

#### Outdoor Living Environment

- Air quality
- Road traffic accidents involving injury to pedestrians and cyclists

### Commentary

There are five areas which are ranked within the 50% most deprived in England in this domain.

The more deprived areas are shown on Map 10.

Graph 10: Spread of National Ranking of all SOAs in Harborough

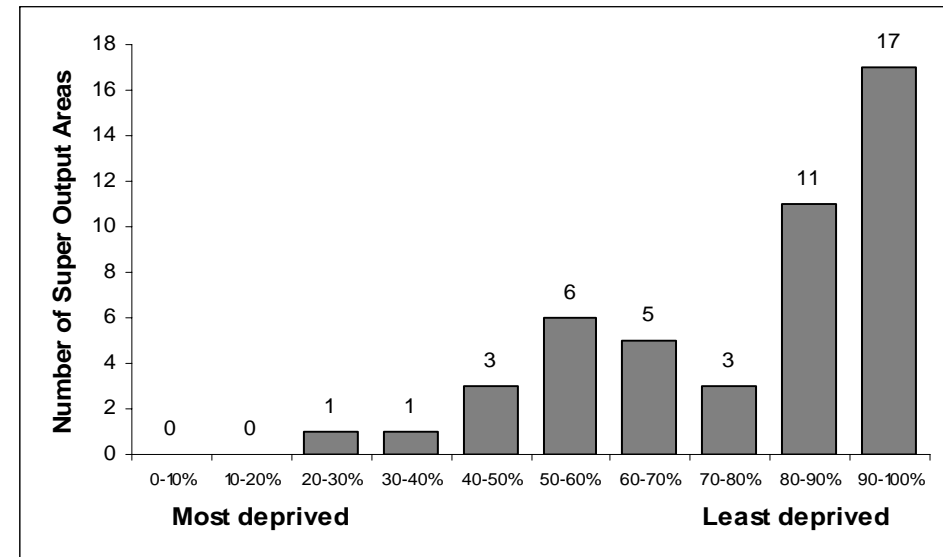
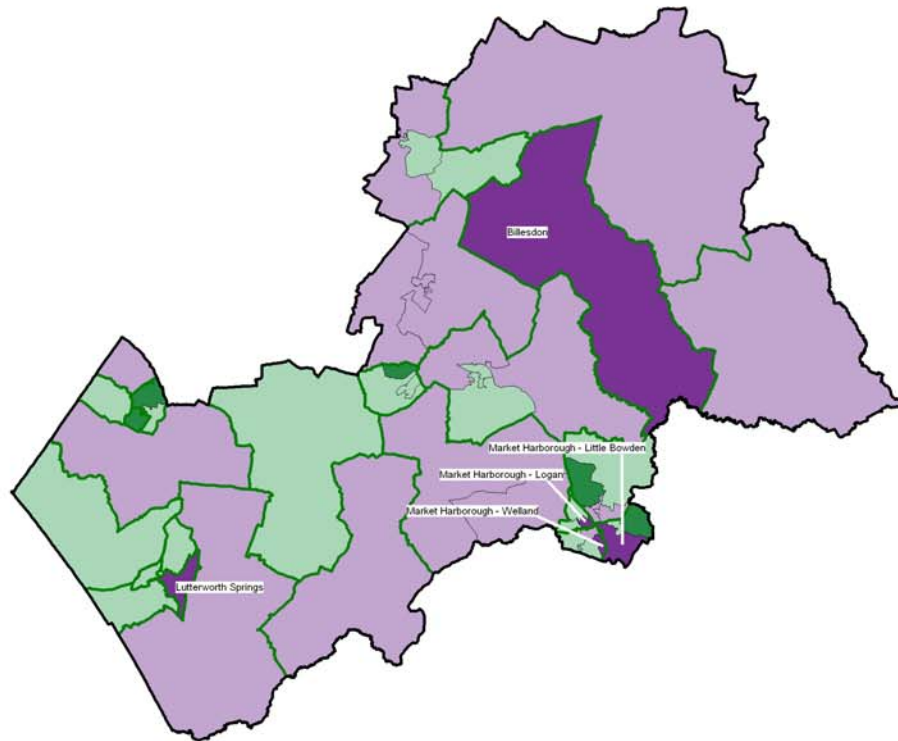


Table 11: Ten most deprived areas in Harborough

SOA	Ward	Score	District Rank	County Rank	National Rank
E01025807	Mkt Harborough - Welland	29.77	1	19	8,830
E01025801	Mkt Harborough - Logan	25.86	2	35	10,690
E01025770	Billesdon	19.06	3	69	14,598
E01025792	Lutterworth Springs	18.96	4	71	14,667
E01025798	Mkt Harborough - Little B'den	17.11	5	88	16,011
E01025815	Tilton	16.48	6	93	16,517
E01025777	Dunton	15.45	7	105	17,365
E01025788	Lubenham	14.28	8	123	18,345
E01025771	Bosworth	13.83	9	132	18,770
E01025781	Glen	13.26	10	142	19,325

**MAP 10: LIVING ENVIRONMENT**

**Map 10**  
**Living Environment Deprivation**  
 highlighting the 10% most deprived Super Output Areas in Harborough



**Levels of Living Environment Deprivation in Harborough**  
 (Number of Super Output Areas)

- Top 10% - Most Deprived
- 10% to 50%
- 50% to 90%
- Bottom 10% - Least Deprived

**10% Most Deprived**  
 Harborough Super Output Area

SOA Code	Ward
1.5807	Market Harborough - Welland
2.5801	Market Harborough Logan
3.5770	Billesdon
4.5792	Lutterworth Springs
5.5798	Market Harborough - Little Bowden

- District Boundary
- Electoral Ward Boundaries
- Super Output Areas

Source: 2001 Census. Output Area Boundaries. Crown copyright 2003. Crown copyright material is reproduced with the permission of the Controller of HMSO.

© Crown copyright 2005. All rights reserved. Use of this image is limited to viewing on-line and printing one copy. Leicestershire County Council LA30029071

Produced by R&I Team, Chief Executives, Leicestershire County Council

Source: Office for Deputy Prime Minister 2004

Each Super Output Area has an average of about 1,500 people



## CRIME DOMAIN

### Indicators

This domain measures the rate of recorded crime for four main crime types – burglary, theft, criminal damage and violence.

### Commentary

Overall levels of deprivation in this domain are low, with only three Super Output Areas ranked within the 50% most deprived in England. No area in Harborough District is ranked within the 50 most deprived areas in the county.

Map 11 shows the areas which are considered to be more deprived.

Graph 11: Spread of National Ranking of all SOAs in Harborough

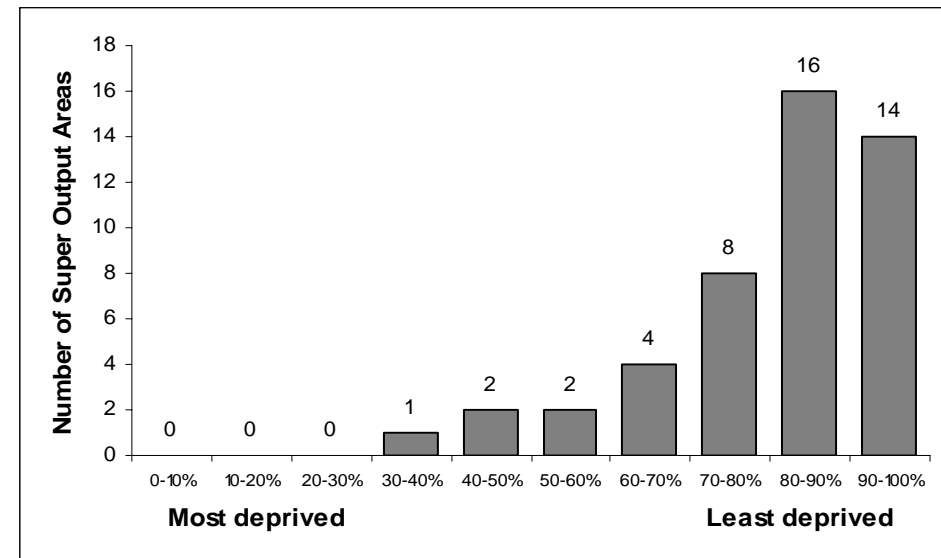
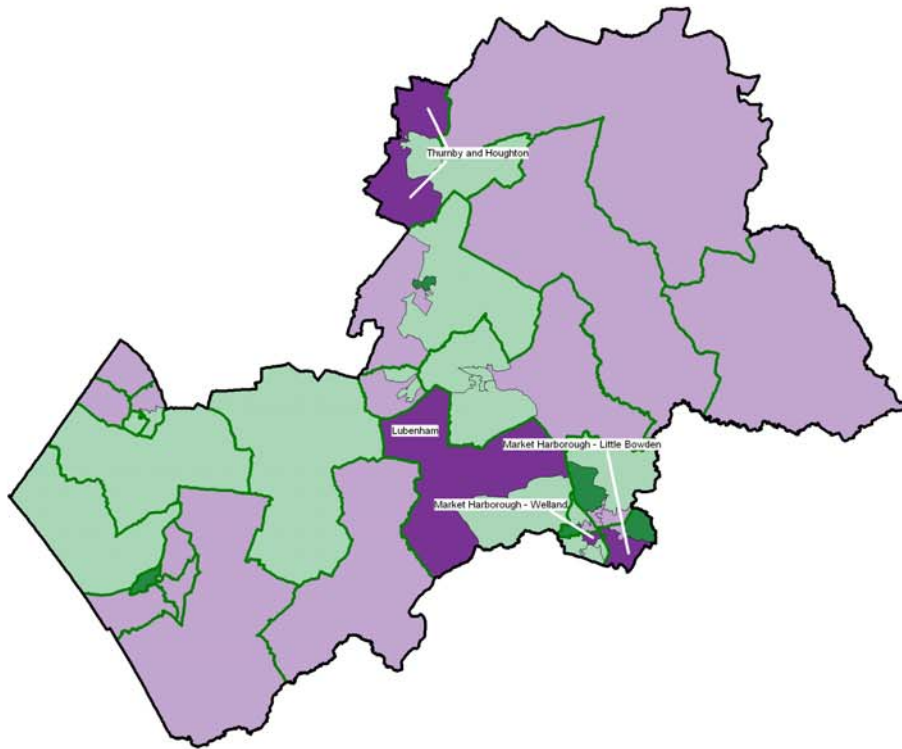


Table 12: Ten most deprived areas in Harborough

SOA	Ward	Score	District Rank	County Rank	National Rank
E01025806	Mkt Harborough - Welland	0.25	1	57	12,693
E01025811	Thurnby and Houghton	0.06	2	87	15,371
E01025798	Mkt Harborough - Little B'den	0.06	3	88	15,437
E01025812	Thurnby and Houghton	-0.04	4	102	16,787
E01025788	Lubenham	-0.18	5	136	18,732
E01025781	Glen	-0.28	6	155	20,098
E01025792	Lutterworth Springs	-0.34	7	165	20,874
E01025801	Mkt Harborough - Logan	-0.38	8	178	21,469
E01025775	B'ton Astley - Primethorpe	-0.45	9	192	22,463
E01025795	Mkt Harborough - Gt Bowden	-0.50	10	205	23,082

**MAP 11: CRIME DOMAIN**

**Map 11**  
**Crime Deprivation**  
 highlighting the 10% most deprived Super Output Areas in Harborough



**Levels of Crime Deprivation in Harborough**  
 (Number of Super Output Areas)

- Top 10% - Most Deprived
- 10% to 50%
- 50% to 90%
- Bottom 10% - Least Deprived

**10% Most Deprived**  
**Harborough Super Output Area**

SOA Code	Ward
1.5806	Market Harborough - Welland
2.5811	Thurnby and Houghton
3.5798	Market Harborough - Little Bowden
4.5812	Thurnby and Houghton
5.5788	Lubenham

- District Boundary
- Electoral Ward Boudaries
- Super Output Areas

Source: 2001 Census, Output Area Boundaries, Crown copyright 2003. Crown copyright material is reproduced with the permission of the Controller of HMSO.

© Crown copyright 2005. All rights reserved. Use of this image is limited to viewing on-line and printing one copy. Leicestershire County Council. LA100019271.

Produced by R&I Team, Chief Executives, Leicestershire County Council

Source: Office for Deputy Prime Minister 2004



Each Super Output Area has an average of about 1,500 people

## APPENDIX 1

The table below shows each Super Output Area in the district, the ward in which it is located along with the ranking within England (where a ranking of 1 = most deprived in England, 32,482 = least deprived in England). For ease of use, any area ranked within the 20% most deprived in England (ranked between 1 and 6,496) has been shaded.

SOA	Ward	IMD	Income	Employment	Health	Education	Barriers	Living Env	Crime	IDAC	IDAOP
E01025770	Billesdon	23,583	28,764	28,202	30,474	28,879	1,331	14,598	26,594	30,050	26,504
E01025771	Bosworth	24,909	21,843	23,001	26,722	26,017	9,561	18,770	26,687	22,858	21,132
E01025772	Broughton Astley: Astley	31,392	29,284	30,022	30,857	21,822	18,864	32,058	31,409	25,747	31,552
E01025773	Broughton Astley: Broughton	32,050	30,165	30,089	29,845	26,422	25,775	31,897	28,111	28,695	30,382
E01025774	Broughton Astley: Broughton	31,511	30,477	30,414	30,454	24,876	17,999	31,957	26,552	28,856	27,551
E01025775	B'ghton Astley: Primethorpe	27,823	22,033	25,499	27,546	16,863	27,746	31,094	22,463	26,418	18,598
E01025776	Broughton Astley: Sutton	29,269	27,859	28,748	27,529	19,772	16,706	27,680	25,135	23,944	25,966
E01025777	Dunton	27,739	27,615	30,888	31,217	26,656	5,672	17,365	28,789	25,995	22,565
E01025778	Fleckney	27,413	20,308	27,032	27,571	18,268	20,815	28,264	26,692	20,733	16,118
E01025779	Fleckney	29,611	24,289	27,710	26,262	18,632	26,165	30,078	30,335	21,497	21,270
E01025780	Fleckney	30,146	27,065	23,117	27,753	22,056	26,572	32,111	30,004	27,329	25,427
E01025781	Glen	28,520	26,754	30,275	30,785	29,022	10,331	19,325	20,098	26,196	27,035
E01025782	Glen	29,391	23,829	23,228	27,444	22,157	29,458	27,476	31,653	21,466	25,832
E01025783	Glen	32,133	31,388	30,376	31,815	30,451	20,422	27,856	29,195	31,103	30,535
E01025784	Kibworth	17,977	20,656	15,253	24,744	24,543	1,325	25,029	25,624	28,333	25,159
E01025785	Kibworth	28,759	20,875	25,686	28,769	25,480	25,847	21,359	29,239	21,098	20,366
E01025786	Kibworth	26,838	15,589	23,380	27,673	21,909	30,230	28,474	30,159	15,099	21,076
E01025787	Kibworth	31,560	29,250	27,628	30,755	29,045	21,454	28,576	28,420	31,957	26,205
E01025788	Lubenham	18,872	20,054	24,964	22,938	24,251	1,423	18,345	18,732	22,626	15,949
E01025789	Lubenham	23,270	24,300	21,134	20,656	17,857	11,143	19,382	28,139	22,298	18,242
E01025790	Lutterworth Brookfield	31,882	31,698	31,664	32,272	29,160	12,463	30,163	32,001	31,879	29,142
E01025791	Lutterworth Orchard	25,936	20,234	27,784	25,877	18,080	12,451	28,745	26,415	16,348	24,464
E01025792	Lutterworth Springs	24,779	17,726	23,686	28,941	21,971	26,315	14,667	20,874	18,799	13,146
E01025793	Lutterworth Swift	24,637	17,343	22,659	26,865	18,512	16,732	29,233	26,034	17,078	16,053
E01025794	Mkt H'borough: Gt Bowden	31,638	28,843	29,141	30,285	30,064	15,475	32,458	32,057	27,457	30,787
E01025795	Mkt H'borough: Gt Bowden	25,574	21,585	20,303	27,004	19,670	26,837	20,411	23,082	19,292	22,810
E01025796	Mkt H'borough: Gt Bowden	16,505	10,856	13,788	17,644	10,482	27,696	23,406	25,591	12,856	11,702

Continued on next page

**APPENDIX 1**

SOA	Ward	IMD	Income	Employment	Health	Educ- ation	Barriers	Living Env	Crime	IDAC	IDAOP
E01025797	Mkt H'borough: Gt Bowden	31,431	26,773	27,887	30,430	25,613	27,553	29,425	28,913	25,219	25,158
E01025798	Mkt H'borough: Little Bowden	25,973	25,240	27,313	27,183	22,123	16,504	16,011	15,437	20,953	28,566
E01025799	Mkt H'borough: Little Bowden	31,305	32,437	32,121	31,399	27,114	8,245	32,412	31,441	32,197	30,334
E01025800	Mkt H'borough: Little Bowden	31,316	28,552	31,653	31,063	26,400	16,305	31,928	24,550	23,562	30,531
E01025801	Mkt Harborough: Logan	19,169	12,473	19,055	18,189	21,154	30,145	10,690	21,469	20,340	3,327
E01025802	Mkt Harborough: Logan	29,235	21,305	26,157	29,466	22,494	22,623	29,685	30,737	17,099	29,484
E01025803	Mkt Harborough: Logan	32,410	31,204	31,258	31,908	28,829	24,682	31,878	31,673	31,151	30,014
E01025804	Mkt Harborough: Welland	26,219	20,465	21,829	22,983	18,351	22,550	30,924	30,572	17,441	21,813
E01025805	Mkt Harborough: Welland	30,080	26,366	27,225	27,559	20,676	22,471	29,649	29,753	26,226	26,696
E01025806	Mkt Harborough: Welland	11,662	7,163	13,080	16,686	6,112	20,863	20,627	12,693	8,621	6,294
E01025807	Mkt Harborough: Welland	23,316	18,912	22,193	23,488	21,277	25,891	8,830	28,213	19,380	17,385
E01025808	Misterton	25,737	26,060	31,250	29,970	27,807	2,801	20,195	25,152	28,500	16,727
E01025809	Nevill	26,777	29,091	25,865	27,407	26,976	5,547	22,856	25,266	30,569	25,688
E01025810	Peatling	27,517	30,178	30,866	31,520	26,062	2,597	28,372	27,347	31,725	25,689
E01025811	Thurnby & Houghton	29,074	27,585	25,133	30,634	21,399	30,131	24,867	15,371	27,321	27,159
E01025812	Thurnby & Houghton	27,251	22,398	26,741	30,533	24,897	13,839	28,252	16,787	21,333	25,650
E01025813	Thurnby & Houghton	31,774	31,061	29,009	31,330	27,545	17,773	31,595	28,974	29,902	31,775
E01025814	Thurnby & Houghton	32,136	27,518	29,588	31,781	29,890	27,797	30,098	30,043	25,383	28,262
E01025815	Tilton	21,387	26,920	29,057	30,797	26,375	394	16,517	26,537	25,564	26,788
E01025816	Ullesthorpe	30,077	24,368	29,006	28,416	27,267	14,564	29,078	30,979	25,640	18,029

---

If you require information contained in this publication in another version eg large print, Braille, tape or an alternative language please call 0116 265 8262 or email [sgeddes@leics.gov.uk](mailto:sgeddes@leics.gov.uk)

---