

Office of the Deputy Prime Minister
Indices of Deprivation 2004
Key Findings in Hinckley and Bosworth

January 2005



Report Produced by Research & Information Team
Chief Executives Department
Leicestershire County Council



CONTENTS

Contents

	Page
Introduction	2
District Summary	3
Geography	4
Local Data	6
Index of Multiple Deprivation	8
Income Deprivation	10
Income Deprivation Affecting Children	12
Income Deprivation Affecting Older People	14
Employment Deprivation	16
Health Deprivation and Disability	18
Education, Skills and Training Deprivation	20
Barriers to Housing and Services	22
Living Environment	24
Crime Deprivation	26
Appendix 1	28

INTRODUCTION

Introduction

The Indices of Deprivation 2004 are produced by the Office of the Deputy Prime Minister (ODPM). They are an attempt to measure deprivation in a consistent way for small areas across England. They were first developed in the mid 1990's using data from the 1991 Census. Since then the Indices have been revised several times using updated data and new indicators to reflect change. They have been widely used to target regeneration resources through the regional allocation of the SRB Challenge Fund.

In recent years with the release of the Indices of Deprivation (ID2000) in July 2000, use of the Indices has become more widespread. Both central and local government places a lot of value on the Indices and the Audit Commission uses it as one measure for the Quality of Life Indicators.

Indices of Deprivation 2004

The Indices of Deprivation 2004 (ID2004) were released in May 2004. The ID2004 are based on the approach, structure and methodology that was used to create the previous Indices of Deprivation 2000. The ID2004 updates the ID2000 in two key ways:

- more up-to-date data has been used (mostly 2001 data), and
- new measures have been incorporated as new and improved data sources have become available.

These changes however mean that the two indices cannot be directly compared. In addition many ward boundaries have changed since the release of the 2000 data meaning that straightforward comparisons cannot be made. Therefore change over time cannot be identified.

This Report

This report presents the results of the Indices of Deprivation 2004 in Hinckley and Bosworth borough.

It considers the summary measures used to score and rank the borough in relation to other Local Authority Districts in England.

It also includes details of different aspects of deprivation affecting smaller areas within the borough. A series of maps are included and illustrate where the relatively higher levels of deprivation are located.

Leicestershire County Report

A report considering the Indices of Deprivation 2004 in more detail across all districts in Leicestershire has also been produced. It is available to download at www.leics.gov.uk/statistics, or by using the contact details below.

Further Information

Further information is available from www.odpm.gov.uk

If you require further guidance, please contact:

Sarah Geddes
Research & Information Team
Chief Executives Department
Leicestershire County Council

E: sgeddes@leics.gov.uk

T: 0116 265 8262

SUMMARY

Hinckley and Bosworth Borough Summary

ODPM uses six summary measures to rank district authorities in England. The most commonly used measure is the Rank of Average Rank which measures the average levels of deprivation across the borough. This shows that Hinckley and Bosworth borough is ranked 275th out of the 354 district authorities in England, where 1=most deprived and 354=least deprived. Table 1 below shows that Charnwood and North West Leicestershire are ranked as more deprived in Leicestershire.

Table 1: Comparison with other districts in Leicestershire

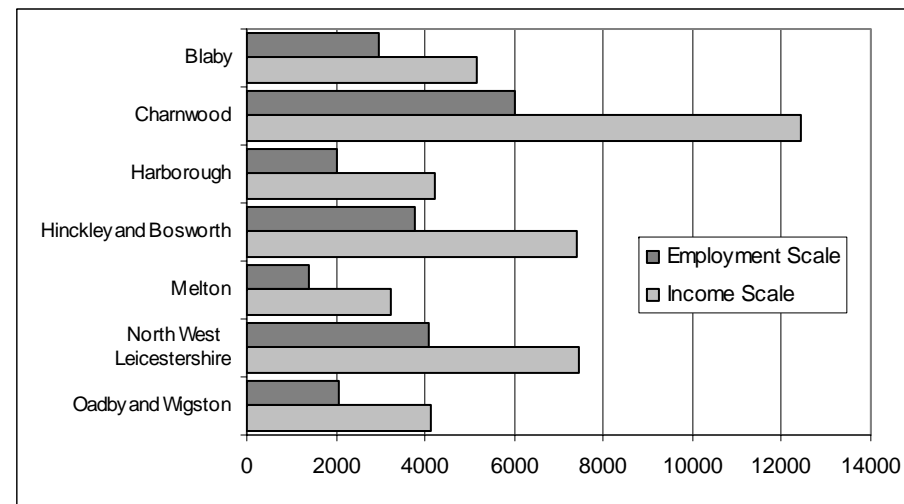
District	Rank of average rank
North West Leicestershire	195
Charnwood	262
Hinckley and Bosworth	275
Melton	293
Oadby and Wigston	304
Blaby	316
Harborough	336

Other measures which are used to rank district authorities include the Rank of Local Concentration. This measures the severity of multiple deprivation in each authority, measuring 'hot spots' of deprivation. Hinckley and Bosworth is ranked 267th in England showing that the borough experiences relatively low levels of deprivation.

The districts are also ranked on an Income and Employment Scale. This measures the number of people who are considered to be either income or employment deprived in each district.

The graph below shows that 7,402 people are income deprived and 3,775 people are employment deprived in Hinckley and Bosworth.

Graph 1: Number of people who are income or employment deprived by district



The examination of Super Output Area data in each domain highlights the locations where deprivation is concentrated in the borough.

GEOGRAPHY

Indices of Deprivation: Geography

For the first time, the Indices of Deprivation 2004 have been released at Super Output Area (SOA) lower level – where previous Indices were released at ward level.

Super Output Areas are a new national geography created by the Office for National Statistics. They are created by combining a number of Output Areas which were created for the 2001 Census.

Super Output Areas are small areas of broadly consistent population size across the country, each containing approximately 1,500 people.

The use of Super Output Areas (lower level) as a basis for the Indices enables smaller, sub-ward areas of deprivation to be identified. Such areas may previously have been hidden / masked by the use of ward level data.

Hinckley and Bosworth borough contains 66 Super Output Areas.

Table 2: Number of SOAs by area

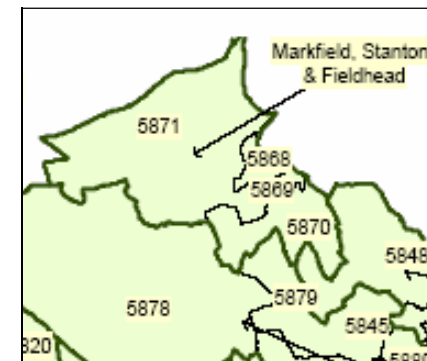
	Number of SOAs
England	32,482
Leicestershire	396
Hinckley and Bosworth Borough	66

In all cases, a ranking of 1 signifies the most deprived area. In respect of the national ranking which is given in each of the following tables, a ranking between 1 and 3,248 denotes that the area is ranked within the 10% most deprived in England, and a ranking between 1 and 6,496 denotes that the area is ranked within the 20% most deprived in England.

Map 1 on the next page shows the location of each of the Super Output Areas in Hinckley and Bosworth borough. Each Super Output Area is identified by a nine digit code, eg. E0102**5878**. For ease of use, Map 1 lists only the last four digits.

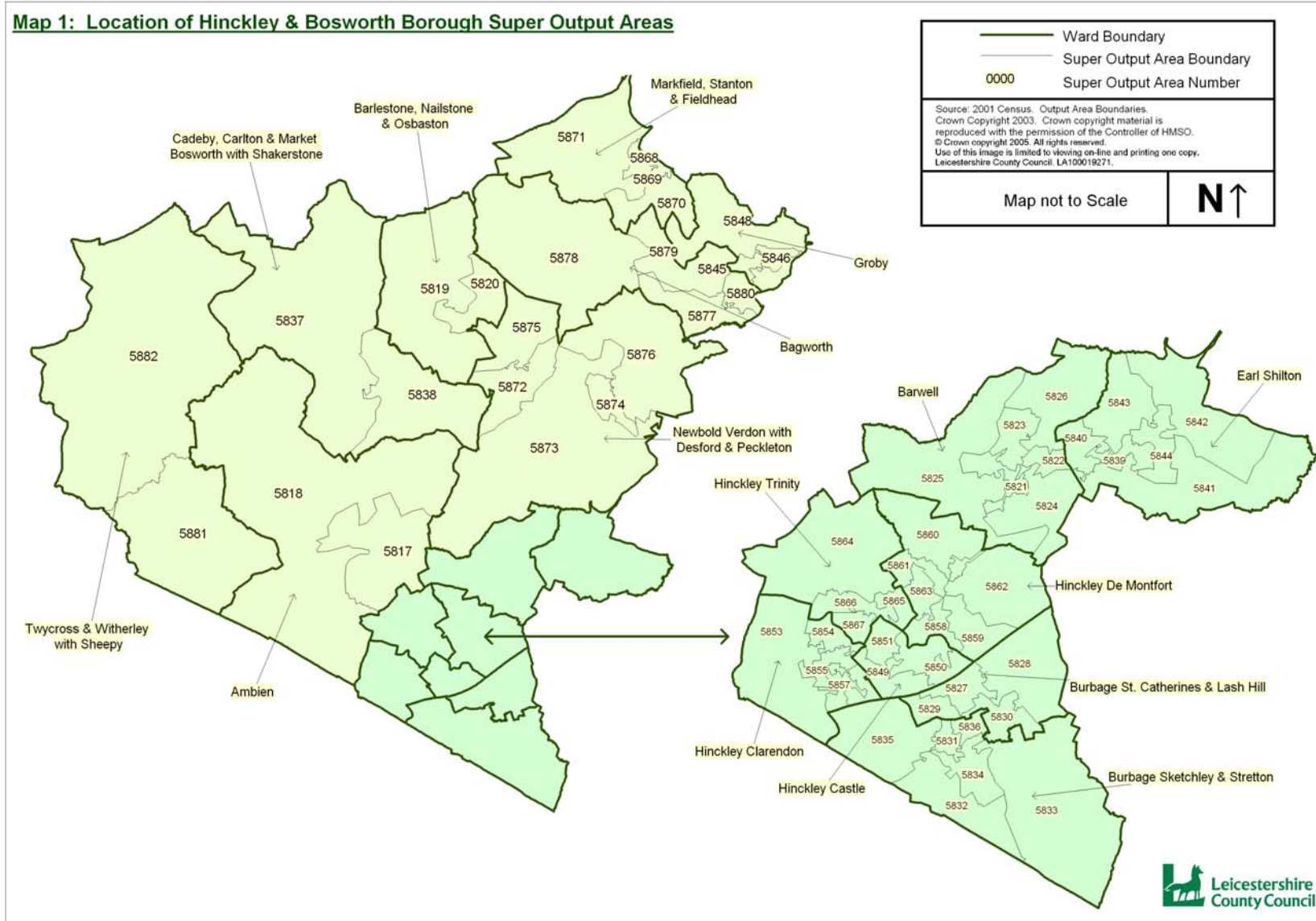
The picture below shows how a number of Super Output Areas (normally between two and five) are located within ward boundaries, so for example Markfield ward contains four SOAs – 5868, 5869, 5870 and 5871.

Picture 1: Extract of Map 1 showing SOAs within ward boundaries



For information, this report also contains the ward in which each SOA is located. However, where a ward name is given, users should be aware that it relates only to part of the ward, and not necessarily the entire ward.

MAP 1: LOCATION OF SOAS



LOCAL DATA

LOCAL DATA

Local data

The Index of Multiple Deprivation 2004 (IMD2004) combines indicators across seven domains into a single deprivation score and rank for each Super Output Area. The domains are shown below:

- Income Deprivation
- Employment Deprivation
- Health Deprivation and Disability
- Education, Skills and Training Deprivation
- Barriers to Housing and Services
- Living Environment Deprivation
- Crime

There are also two supplementary domains which measure income deprivation affecting children (IDAC) and income deprivation affecting older people (IDAOP).

These domains are given the following weighting when calculating the overall Index of Multiple Deprivation:

	Weighting
Income Deprivation	22.5%
Employment Deprivation	22.5%
Health Deprivation and Disability	13.5%
Education, Skills and Training Deprivation	13.5%
Barriers to Housing and Services	9.3%
Living Environment Deprivation	9.3%
Crime	9.3%

The following sections consider the relative levels of deprivation experienced in each domain in Hinckley and Bosworth.

Information on the indicators used to compile each domain is listed along with a table showing the ten most deprived SOAs in the borough in each domain.

For comparison, some tables also include the ranking in Leicestershire (where 1=most deprived, 396=least deprived) and in England (where 1=most deprived, 32,482=least deprived).

Each section also includes a graph which shows the number of Super Output Areas in each domain and how they are ranked within England. This gives a visual representation of the spread of relative deprivation in each domain in the borough, showing how many areas are in the 10% most deprived and 10% least deprived in England.

This information is accompanied by Maps 2 to 11 which show the location of the most deprived areas in each domain in the borough. The 10% most deprived and 10% least deprived areas in Hinckley and Bosworth are highlighted on the maps.

A comprehensive list of national ranks for each Super Output Area in each domain is included in appendix 1.

INDEX OF MULTIPLE DEPRIVATION

Indicators

The Index of Multiple Deprivation combines the indicators across the seven domains (listed below) into a single deprivation score and rank for each Super Output Area

- Income
- Employment
- Health & Disability
- Education & Skills
- Barriers to Housing & Services
- Living Environment
- Crime

Commentary

The Index of Multiple Deprivation considers all aspects of deprivation experienced by particular areas. Overall levels of deprivation in Hinckley and Bosworth are low, with no Super Output Areas ranked within the 20% most deprived in England and only two areas ranked in the 30% most deprived in England.

Part of Earl Shilton ward is considered to be the most deprived in the borough – shown on Map 2. However, it is ranked 8,230 most deprived in England, and 8th most deprived in the county. The other areas in the borough that are ranked in the 20 most deprived areas in the county include parts of Hinckley Trinity and Hinckley Clarendon wards.

Graph 2: Spread of National Ranking of all SOAs in Hinckley & Bosworth

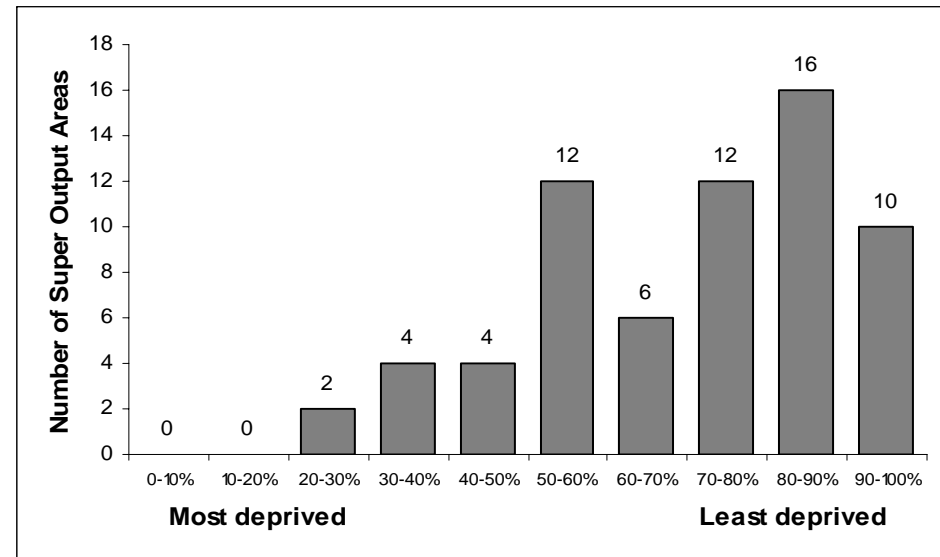
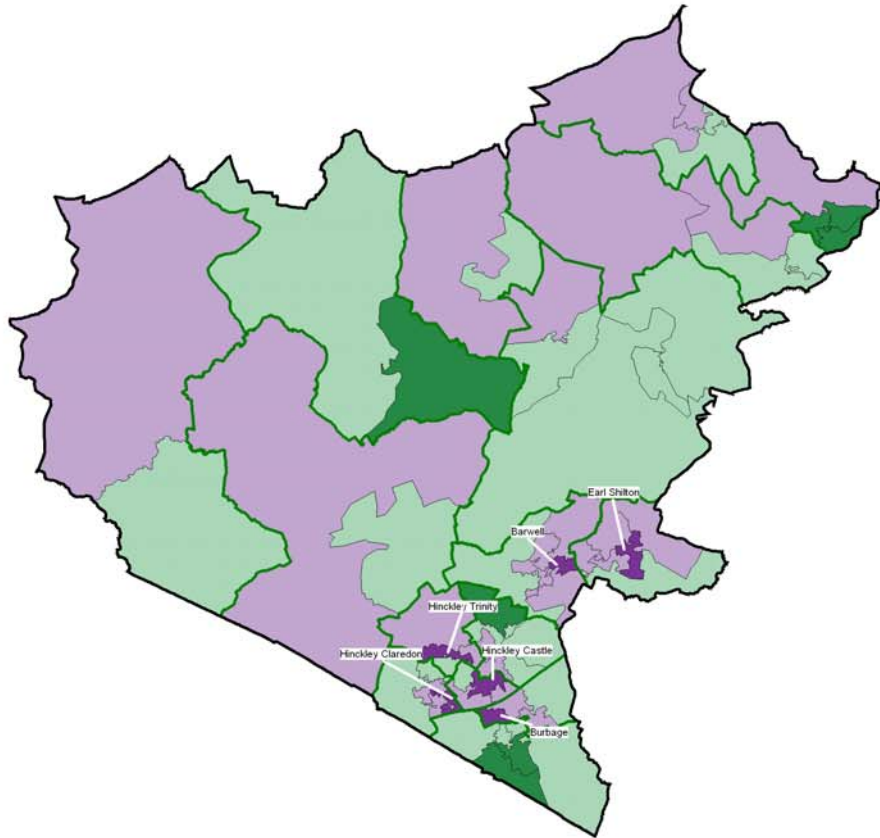


Table 3: Ten most deprived areas in Hinckley and Bosworth

SOA	Ward	Score	District Rank	County Rank	National Rank
E01025844	Earl Shilton	29.75	1	8	8,230
E01025866	Hinckley Trinity	26.62	2	14	9,739
E01025856	Hinckley Clarendon	25.16	3	17	10,519
E01025829	Burbage St Catherines	23.43	4	26	11,455
E01025822	Barwell	21.55	5	34	12,700
E01025852	Hinckley Castle	21.55	6	35	12,707
E01025878	Ratby, Bagworth	19.58	7	49	14,186
E01025843	Earl Shilton	18.26	8	59	15,200
E01025823	Barwell	18.01	9	60	15,391
E01025827	Burbage St Catherines	17.33	10	61	15,980

MAP 2: INDEX OF MULTIPLE DEPRIVATION

Map 2
Index of Multiple Deprivation 2004
 highlighting the 10% most deprived Super Output Areas in Hinckley & Bosworth



Levels of Multiple Deprivation in Hinckley & Bosworth
 (Number of Super Output Areas)

- Top 10% - Most Deprived
- 10% to 50%
- 50% to 90%
- Bottom 10% - Least Deprived

10% Most Deprived
 Hinckley & Bosworth Super Output Areas

SOA Code	Ward
1.5844	Earl Shilton
2.5866	Hinckley Trinity
3.5856	Hinckley Claredon
4.5829	Burbage St. Catherine and Lash Hill
5.5822	Barwell
6.5852	Hinckley Castle

Each Super Output Area has an average of about 1,500 people

- District Boundary
- Electoral Ward Boundaries
- Super Output Areas

Source: 2001 Census, Output Area Boundaries, Crown copyright 2003. Crown copyright material is reproduced with the permission of the Controller of HMSO.

© Crown copyright 2005. All rights reserved. Use of this image is limited to viewing on-line and printing one copy. Leicestershire County Council, LA10091271.

Produced by RSI Team, Chief Executives, Leicestershire County Council

Source: Office for Deputy Prime Minister 2004



INCOME DEPRIVATION

Indicators

The income deprivation domain measures the proportion of the population living below 60% of median income. A number of indicators are used to compile this domain. These include:

- Adults and children in Income Support households
- Adults and children in Income Based Job Seekers Allowance households
- Adults and children in Working Family Tax Credit households
- Adults and children in Disabled Persons Tax Credit households
- Supported asylum seekers in receipt of subsistence only and accommodation support

Commentary

The score gives the proportion of the population who are considered to be income deprived. In Hinckley and Bosworth there are **7,402 people** who are considered to be income deprived. Graph 3 shows the spread of rankings for all Super Output Areas in the borough. It shows that no areas are ranked within the 20% most deprived in England, and four are ranked within the 30% most deprived.

Table 4 lists the number of people in the most deprived Super Output Areas who are income deprived.

Map 3 shows the most deprived areas in the borough in this domain. Parts of Hinckley Clarendon, Earl Shilton, Hinckley Trinity and Ratby wards are ranked as being the most deprived, and each of these Super Output Areas contain over 270 people who are income deprived.

Graph 3: Spread of National Ranking of all SOAs in Hinckley & Bosworth

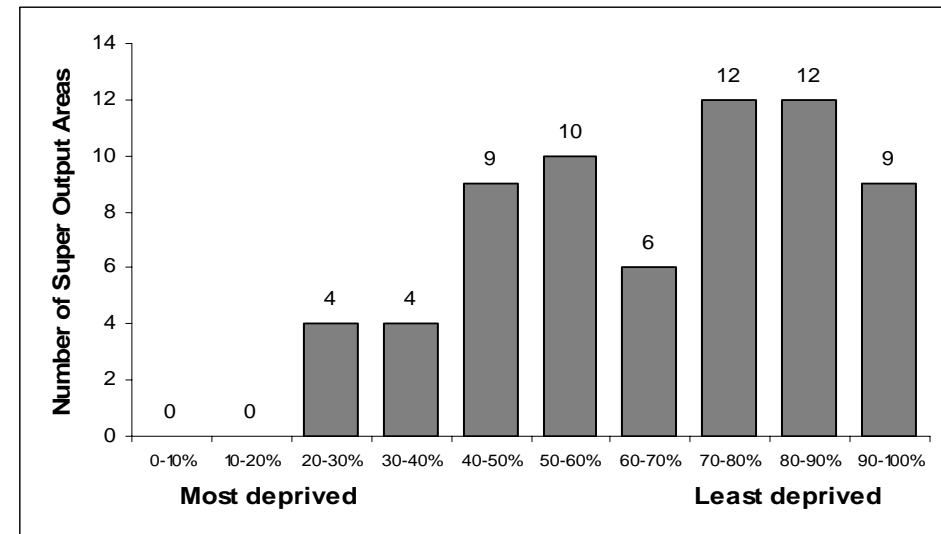
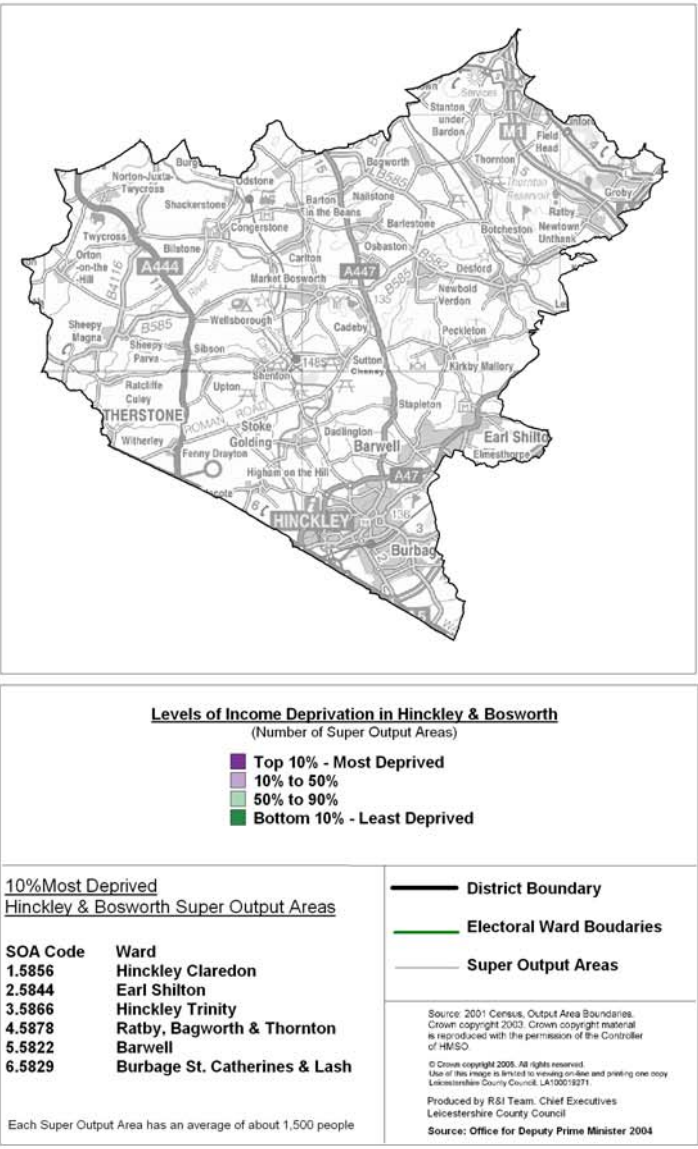
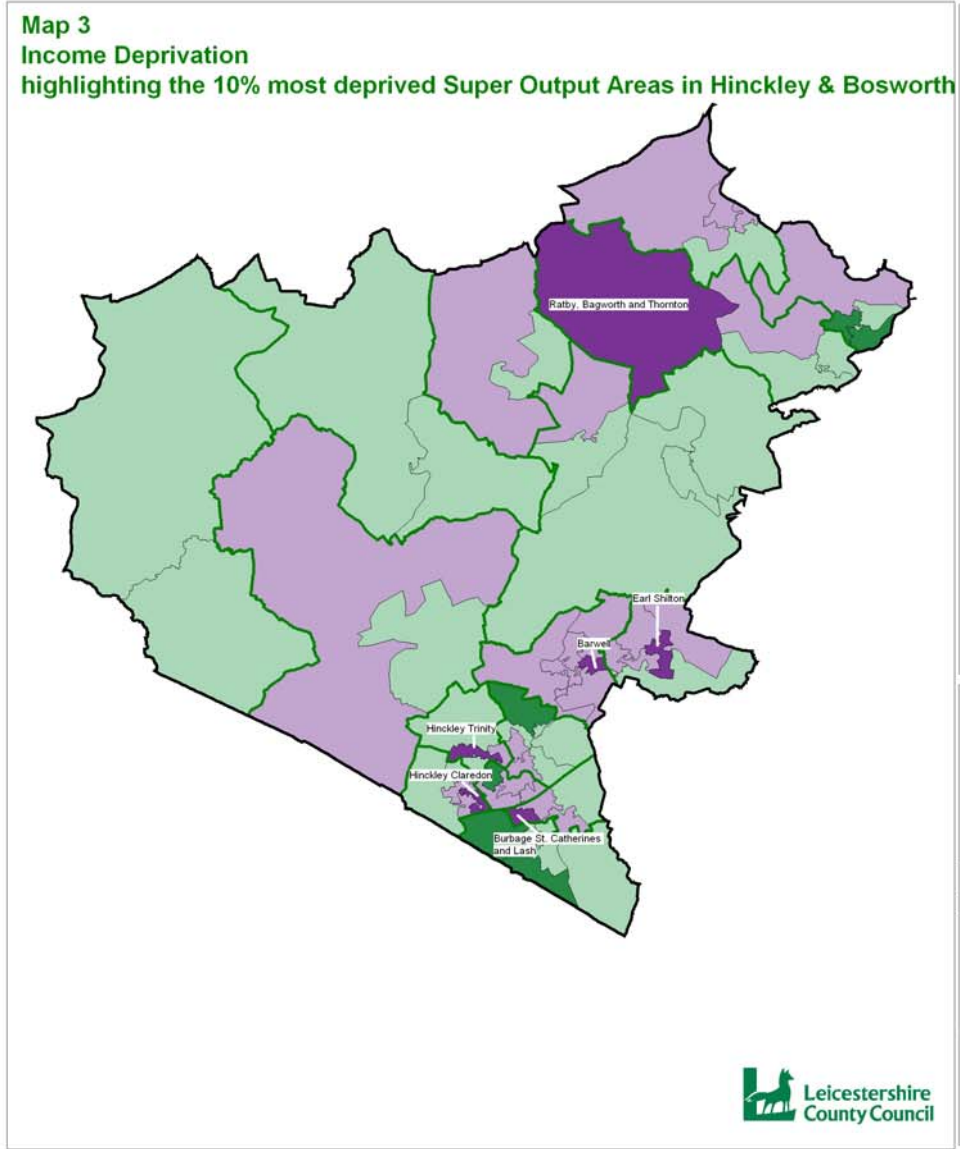


Table 4: Ten most deprived areas in Hinckley and Bosworth

SOA	Ward	Score	Total pop	Number income deprived	National Rank
E01025856	Hinckley Clarendon	0.22	1,405	309	6,731
E01025844	Earl Shilton	0.20	1,478	296	7,594
E01025866	Hinckley Trinity	0.18	1,518	273	8,954
E01025878	Ratby, Bagworth	0.17	1,836	312	9,594
E01025822	Barwell	0.16	1,524	244	10,053
E01025829	Burbage St Catherines	0.15	1,461	219	11,469
E01025842	Earl Shilton	0.14	1,523	213	11,839
E01025843	Earl Shilton	0.13	1,518	197	12,452
E01025875	Newbold Verdon	0.12	1,551	186	13,634
E01025865	Hinckley Trinity	0.12	1,749	210	13,794

MAP 3: INCOME DEPRIVATION



INCOME DEPRIVATION AFFECTING CHILDREN

Indicators

This is a supplementary indicator that measures the proportion of children under 16 in an area who live in income deprived households.

Commentary

Overall, there are 2,046 children in Hinckley and Bosworth living in households which are considered to be income deprived. This accounts for 10.7% of the children in the borough aged under 16 years. Almost half of these children live in the ten most deprived Super Output Areas.

Of the 7,402 people who are income deprived in Hinckley and Bosworth, 27.6% are aged 16 or under.

Map 4 shows the locations of the Super Output Areas that are ranked as most deprived in the borough. It should be remembered that only two Super Output Areas within the borough are ranked in the 20% most deprived in England – as shown on graph 4.

The wards with the highest numbers of children living in households which are income deprived are Earl Shilton (336 children), Barwell (273 children) and Hinckley Clarendon (223 children).

Graph 4: Spread of National Ranking of all SOAs in Hinckley & Bosworth

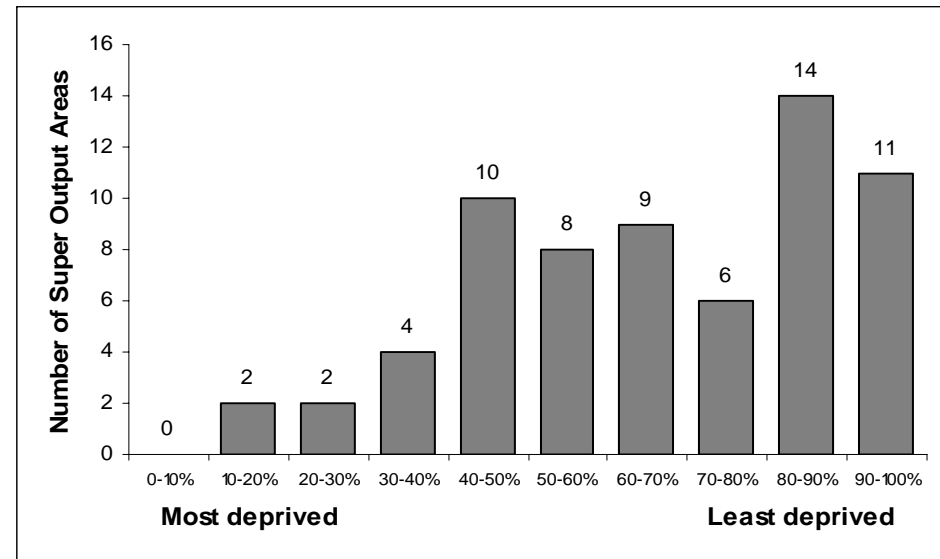
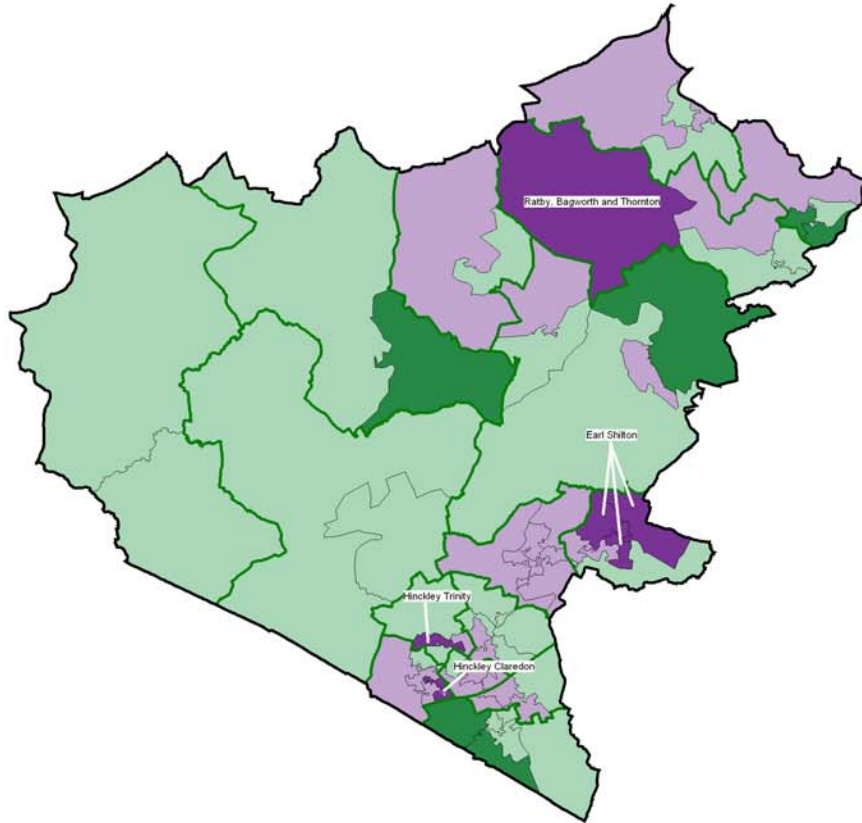


Table 5: Ten most deprived areas in Hinckley and Bosworth

SOA	Ward	Score	Total <16yrs	Number deprived	National Rank
E01025878	Ratby, Bagworth	0.36	380	137	5,994
E01025856	Hinckley Clarendon	0.34	295	101	6,482
E01025844	Earl Shilton	0.28	326	92	8,640
E01025866	Hinckley Trinity	0.26	306	81	9,453
E01025843	Earl Shilton	0.25	304	76	9,987
E01025842	Earl Shilton	0.24	375	91	10,377
E01025822	Barwell	0.23	300	69	10,929
E01025829	Burbage St Catherines	0.20	251	51	12,270
E01025852	Hinckley Castle	0.19	277	53	13,115
E01025863	Hinckley De Montfort	0.18	313	57	13,665

MAP 4: INCOME DEPRIVATION AFFECTING CHILDREN

Map 4
Income Deprivation Affecting Children
 highlighting the 10% most deprived Super Output Areas in Hinckley & Bosworth



Levels of Income Deprivation Affecting Children in Hinckley & Bosworth
 (Number of Super Output Areas)

- Top 10% - Most Deprived
- 10% to 50%
- 50% to 90%
- Bottom 10% - Least Deprived

10% Most Deprived
 Hinckley & Bosworth Super Output Areas

SOA Code	Ward
1.5878	Ratby, Bagworth and Thornton
2.5856	Hinckley Claredon
3.5844	Earl Shilton
4.5829	Hinckley Trinity
5.5843	Earl Shilton
6.5842	Earl Shilton

Each Super Output Area has an average of about 1,500 people

- District Boundary
- Electoral Ward Boundaries
- Super Output Areas

Source: 2001 Census; Output Area Boundaries. Crown copyright 2003. Crown copyright material is reproduced with the permission of the Controller of HMSO.
 © Crown copyright 2005. All rights reserved. Use of this image is limited to viewing on line and printing one copy. Leicestershire County Council. LA100019271.

Produced by R&I Team, Chief Executives
 Leicestershire County Council
 Source: Office for Deputy Prime Minister 2004



INCOME DEPRIVATION AFFECTING OLDER PEOPLE

Indicators

This is a supplementary indicator that measures the proportion of people aged over 60 years in an area who live in income deprived households.

Commentary

Overall there are 2,338 people aged over 60 living in income deprived households in Hinckley and Bosworth. This accounts for 11.0% of the people aged over 60 in the borough.

It also shows that of the 7,402 people who are income deprived in Hinckley and Bosworth, 31.6% are aged over 60.

Graph 5 shows that there is one Super Output Area ranked within the 20% most deprived in England (part of Earl Shilton ward), and another ranked within the 30% most deprived in England (part of Hinckley Clarendon ward) in this domain.

Map 5 shows the location of the areas which are ranked as most deprived in the borough.

Graph 5: Spread of National Ranking of all SOAs in Hinckley & Bosworth

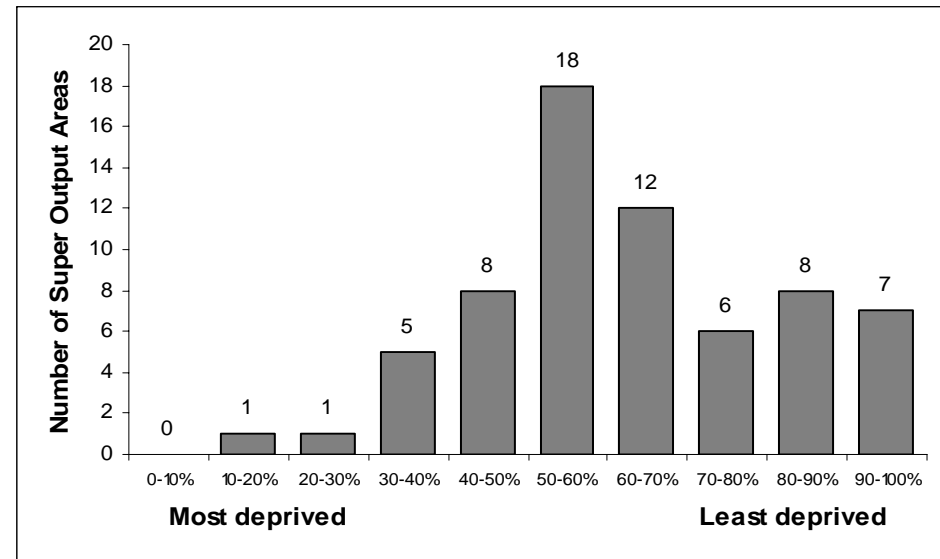
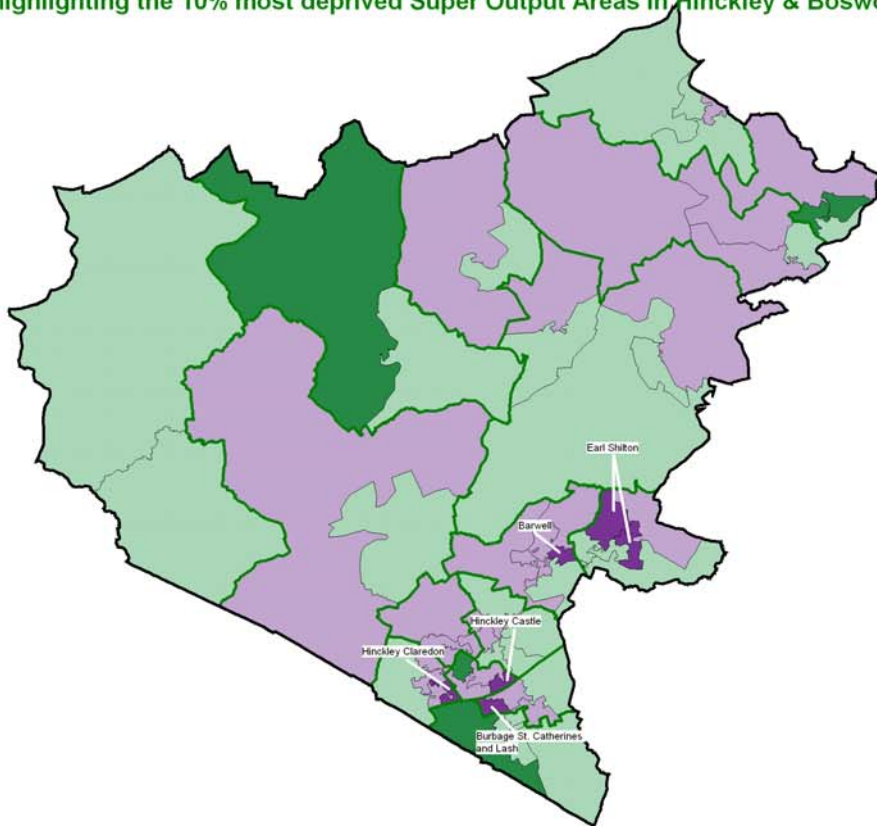


Table 6: Ten most deprived areas in Hinckley and Bosworth

SOA	Ward	Score	Total >60yrs	Number deprived	National Rank
E01025844	Earl Shilton	0.25	266	67	5,817
E01025856	Hinckley Clarendon	0.21	355	76	8,198
E01025850	Hinckley Castle	0.19	358	67	10,385
E01025822	Barwell	0.17	365	63	11,975
E01025829	Burbage St Catherines	0.17	421	70	12,513
E01025843	Earl Shilton	0.16	331	54	12,894
E01025866	Hinckley Trinity	0.16	347	56	12,927
E01025865	Hinckley Trinity	0.16	370	60	13,012
E01025830	Burbage St Catherines	0.16	366	58	13,377
E01025876	Newbold Verdon	0.16	356	56	13,539

MAP 5: INCOME DEPRIVATION AFFECTING OLDER PEOPLE

Map 5
Income Deprivation Affecting Older People
 highlighting the 10% most deprived Super Output Areas in Hinckley & Bosworth



Levels of Income Deprivation Affecting Older People in Hinckley & Bosworth
 (Number of Super Output Areas)

- Top 10% - Most Deprived
- 10% to 50%
- 50% to 90%
- Bottom 10% - Least Deprived

10% Most Deprived
 Hinckley & Bosworth Super Output Area

SOA Code	Ward
1.5844	Earl Shilton
2.5856	Hinckley Claredon
3.5850	Hinckley Castle
4.5822	Barwell
5.5829	Burbage St, Catherines and Lash
6.5842	Earl Shilton

- District Boundary
- Electoral Ward Boudaries
- Super Output Areas

Source: 2001 Census, Output Area Boundaries. Crown copyright 2003. Crown copyright material is reproduced with the permission of the Controller of HMSO.
 © Crown copyright 2005. All rights reserved. Use of this image is limited to viewing on-line and printing one copy. Leicestershire County Council, LA100019271.

Produced by R&I Team, Chief Executives
 Leicestershire County Council

Source: Office for Deputy Prime Minister 2004

Each Super Output Area has an average of about 1,500 people

EMPLOYMENT DEPRIVATION

Indicators

The employment deprivation domain measures the proportion of the working age population that are involuntarily excluded from the world of work. It includes both those who are registered as unemployed, but also includes elements of the more 'hidden unemployed' such as those who are out of the workforce through sickness. The indicators used are:

- Unemployment claimant count
- Incapacity Benefit claimants
- Severe Disablement Allowance claimants
- Participants in New Deal

Commentary

Overall levels of deprivation are low in Hinckley and Bosworth with no areas ranked within the 20% most deprived in the country, and only four ranked within the 30% most deprived in England.

The two most deprived SOAs in this domain in the district, part of Earl Shilton and Hinckley Clarendon wards, are ranked within the ten most deprived in the county.

In Hinckley and Bosworth, there are **3,775 people** who are employment deprived.

Graph 6: Spread of National Ranking of all SOAs in Hinckley & Bosworth

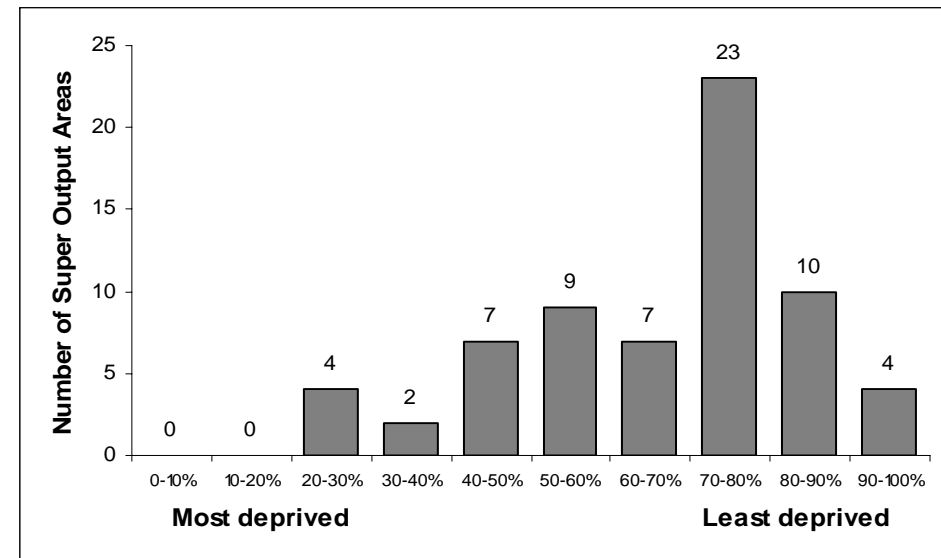
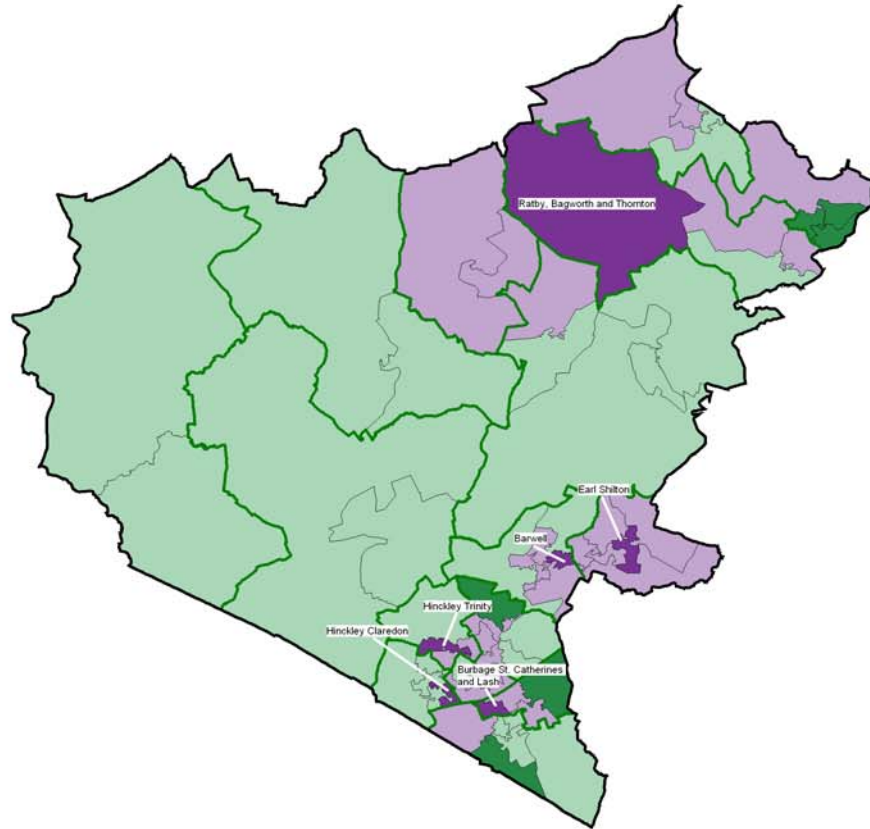


Table 7: Ten most deprived areas in Hinckley and Bosworth

SOA	Ward	Score	District Rank	County Rank	National Rank
E01025844	Earl Shilton	0.15	1	9	7,109
E01025856	Hinckley Clarendon	0.15	2	10	7,301
E01025866	Hinckley Trinity	0.15	3	11	7,353
E01025829	Burbage St Catherines	0.12	4	18	9,523
E01025822	Barwell	0.11	5	26	11,015
E01025878	Ratby, Bagworth	0.10	6	35	12,945
E01025827	Burbage St Catherines	0.10	7	40	13,155
E01025852	Hinckley Castle	0.09	8	53	14,091
E01025865	Hinckley Trinity	0.09	9	65	15,591
E01025875	Newbold Verdon	0.09	10	71	15,860

MAP 6: EMPLOYMENT DEPRIVATION

Map 6
Employment Deprivation
 highlighting the 10% most deprived Super Output Areas in Hinckley & Bosworth



Levels of Employment Deprivation in Hinckley & Bosworth
 (Number of Super Output Areas)

- Top 10% - Most Deprived
- 10% to 50%
- 50% to 90%
- Bottom 10% - Least Deprived

10% Most Deprived
 Hinckley & Bosworth Super Output Area

SOA Code	Ward
1.5844	Earl Shilton
2.5856	Hinckley Claredon
3.5866	Hinckley Trinity
4.5829	Burbage St. Catherines and Lash
5.5822	Barwell
6.5878	Ratby, Bagworth & Thornton

- District Boundary
- Electoral Ward Boundaries
- Super Output Areas

Source: 2001 Census, Output Area Boundaries
 Crown copyright 2003. Crown copyright material is reproduced with the permission of the Controller of HMSO
 © Crown copyright 2005. All rights reserved.
 Use of this image is limited to viewing on-line and printing one copy.
 Leicestershire County Council, LA10019271.
 Produced by R&I Team, Chief Executives
 Leicestershire County Council

Each Super Output Area has an average of about 1,500 people

Source: Office for Deputy Prime Minister 2004

HEALTH DEPRIVATION AND DISABILITY

Indicators

This domain identifies areas with relatively high rates of people who die prematurely or whose quality of life is impaired by poor health or who are disabled. The indicators used to compile this domain include:

- Years of potential life lost
- Comparative Illness and Disability Ratio
- Measures of emergency admissions to hospital
- Measure of adults under 60 suffering from mood or anxiety disorders

Commentary

Levels of health deprivation in Hinckley and Bosworth are low with no Super Output Areas ranked within the 30% most deprived in England. Levels of deprivation in this domain are higher in parts of Hinckley Clarendon, Burbage, and Earl Shilton wards, which are all ranked in the top 20 in the county.

Map 7 shows where the relative levels of health deprivation are higher. The areas which are ranked as more deprived are primarily located within the urban areas of Hinckley, Earl Shilton and Barwell.

Graph 7: Spread of National Ranking of all SOAs in Hinckley & Bosworth

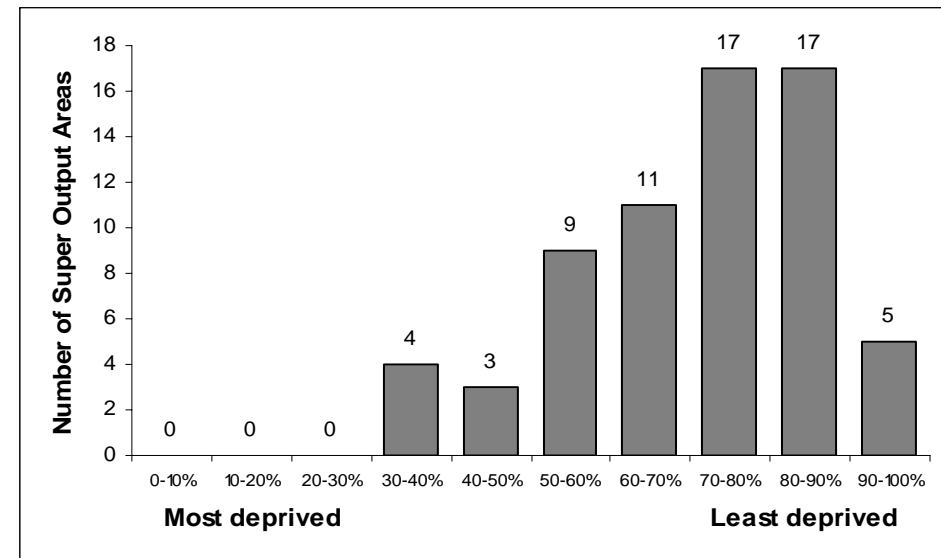
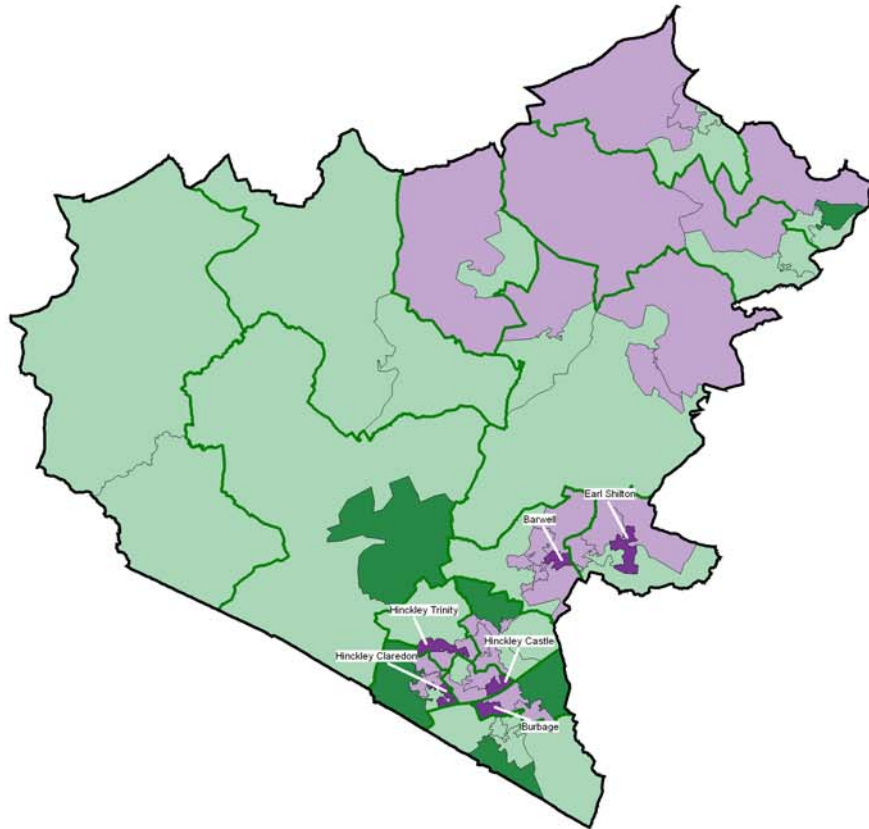


Table 8: Ten most deprived areas in Hinckley and Bosworth

SOA	Ward	Score	District Rank	County Rank	National Rank
E01025856	Hinckley Clarendon	0.47	1	8	9,753
E01025829	Burbage St Catherines	0.40	2	12	10,681
E01025844	Earl Shilton	0.31	3	17	11,719
E01025866	Hinckley Trinity	0.27	4	21	12,295
E01025822	Barwell	0.14	5	34	13,945
E01025850	Hinckley Castle	0.12	6	36	14,347
E01025852	Hinckley Castle	0.06	7	39	15,172
E01025830	Burbage St Catherines	-0.02	8	44	16,260
E01025878	Ratby, Bagworth	-0.04	9	47	16,606
E01025824	Barwell	-0.07	10	55	17031

MAP 7: HEALTH DEPRIVATION AND DISABILITY

Map 7
Health Deprivation and Disability
 highlighting the 10% most deprived Super Output Areas for Hinckley & Bosworth



Levels of Health & Disability Deprivation in Hinckley & Bosworth
 (Number of Super Output Areas)

- Top 10% - Most Deprived
- 10% to 50%
- 50% to 90%
- Bottom 10% - Least Deprived

10% Most Deprived
 Hinckley & Bosworth Super Output Area

SOA Code	Ward
1.5856	Hinckley Claredon
2.5829	Burbage
3.5844	Earl Shilton
4.5866	Hinckley Trinity
5.5822	Barwell
6.5852	Hinckley Castle

- District Boundary
- Electoral Ward Boundaries
- Super Output Areas

Source: 2001 Census, Output Area Boundaries, Crown copyright 2003. Crown copyright material is reproduced with the permission of the Controller of HMSO.
 © Crown copyright 2005. All rights reserved. Use of this image is limited to viewing on-line and printing one copy. Leicestershire County Council, LA100019271.
 Produced by R&I Team, Chief Executives, Leicestershire County Council
 Source: Office for Deputy Prime Minister 2004

Each Super Output Area has an average of about 1,500 people

EDUCATION, SKILLS AND TRAINING DEPRIVATION

Indicators

This domain captures the extent of deprivation in education, skills and training of people living in a local area. The indicators used are:

Children / young people

- Average points score of pupils at Key Stage 2
- Average points score of pupils at Key Stage 3
- Average points score of pupils at Key Stage 4
- Proportion of young people not staying on in school or further education above 16
- Secondary school absence rate
- Proportion of those aged under 21 not entering higher education

Skills

- Proportion of working age adults with no or low qualifications

Commentary

The borough experiences higher levels of deprivation in this domain than in most of the others. There is one Super Output Area ranked within the 10% most deprived in England, and a further five areas ranked within the 20% most deprived in England. The three most deprived areas, parts of Earl Shilton, Hinckley Trinity and Barwell wards, are all within the ten most deprived areas in the county.

Map 8 shows where levels of deprivation are higher.

Graph 8: Spread of National Ranking of all SOAs in Hinckley & Bosworth

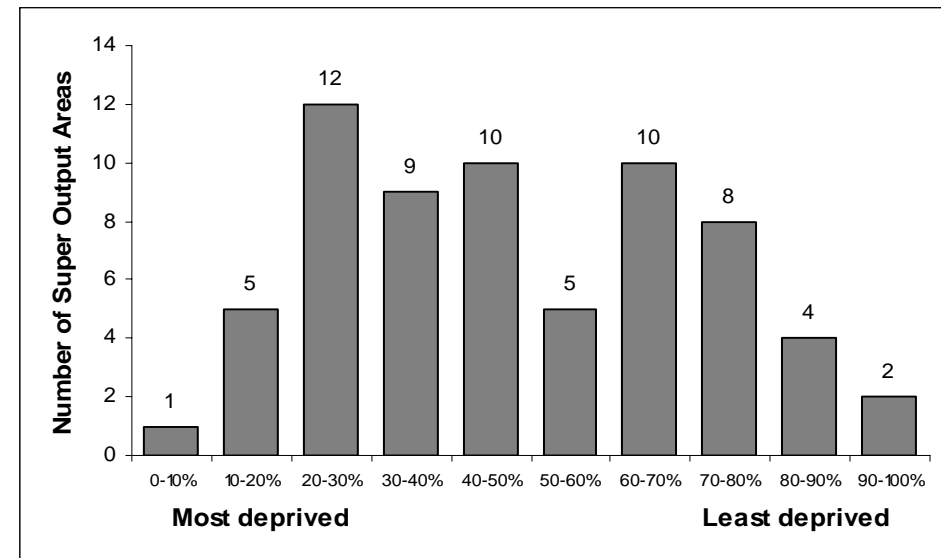
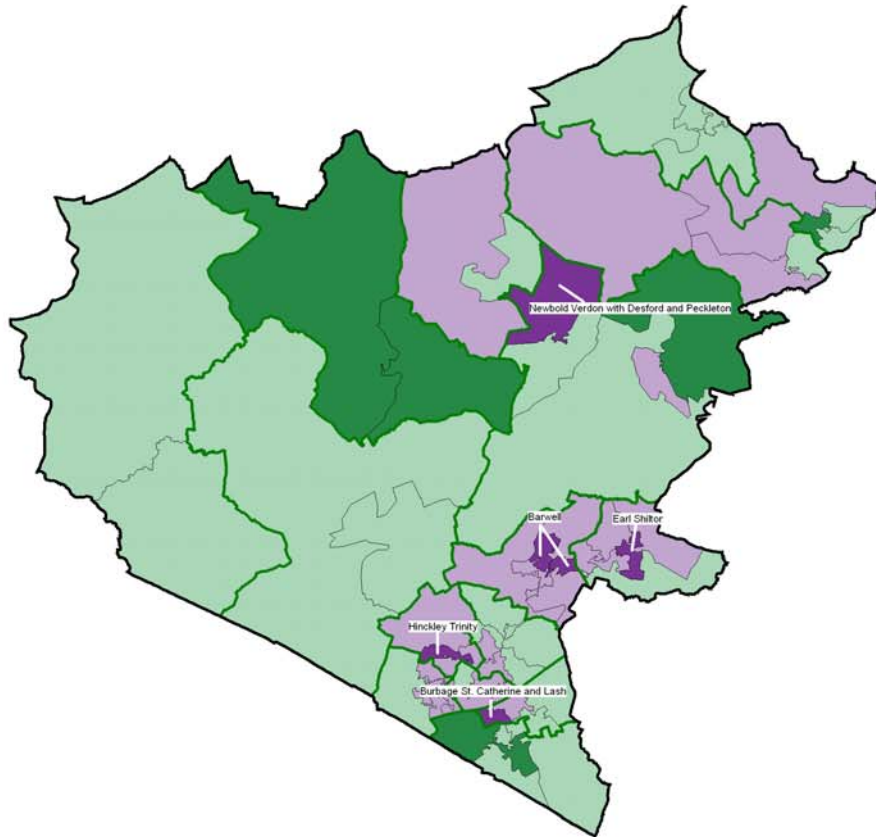


Table 9: Ten most deprived areas in Hinckley and Bosworth

SOA	Ward	Score	District Rank	County Rank	National Rank
E01025844	Earl Shilton	55.13	1	5	2,392
E01025866	Hinckley Trinity	48.91	2	6	3,350
E01025823	Barwell	47.45	3	7	3,618
E01025822	Barwell	43.51	4	11	4,358
E01025875	Newbold Verdon	38.18	5	21	5,591
E01025829	Burbage St Catherines	35.93	6	30	6,248
E01025842	Earl Shilton	33.61	7	34	6,958
E01025865	Hinckley Trinity	33.27	8	37	7,076
E01025863	Hinckley De Montfort	32.73	9	40	7,251
E01025824	Barwell	32.52	10	41	7,322

MAP 8: EDUCATION, SKILLS AND TRAINING DEPRIVATION

Map 8
Education, Skills and Training Deprivation
 highlighting the 10% most deprived Super Output Areas in Hinckley & Bosworth



Levels of Education, Skills and Training Deprivation in Hinckley & Bosworth
 (Number of Super Output Areas)

- Top 10% - Most Deprived
- 10% to 50%
- 50% to 90%
- Bottom 10% - Least Deprived

10% Most Deprived
 Hinckley & Bosworth Super Output Area

SOA Code	Ward
1.5844	Earl Shilton
2.5866	Hinckley Trinity
3.5823	Barwell
4.5822	Barwell
5.5875	Newbold Verdon with Desford and Peckleton
6.5829	St Catherines and Lash

Each Super Output Area has an average of about 1,500 people

- District Boundary
- Electoral Ward Boudaries
- Super Output Areas

Source: 2001 Census, Output Area Boundaries, Crown copyright 2003. Crown copyright material is reproduced with the permission of the Controller of HMSO.
 © Crown copyright 2005. All rights reserved.
 Use of this map is limited to viewing on-line and printing one copy.
 Leicestershire County Council LA100016271.
 Produced by R&I Team, Chief Executives
 Leicestershire County Council

Source: Office for Deputy Prime Minister 2004

BARRIERS TO HOUSING AND SERVICES

Indicators

This domain measures the barriers faced by the local population relating to housing along with a measure of the distance needed to travel to key local services. The indicators used are:

Wider Barriers

- Household overcrowding
- Percentage of households with assistance under the homeless provisions of housing legislation
- Difficulty of access to owner occupation

Geographical Barriers

- Road distance to GP premises
- Road distance to a supermarket or convenience store
- Road distance to a primary school
- Road distance to a Post Office

Commentary

The borough experiences relatively high levels of deprivation in this domain with two Super Output Areas ranked in the 10% most deprived in England, and a further three ranked in the 20% most deprived in England. The most deprived area in Hinckley and Bosworth is part of Twycross and Witherley ward which is ranked as the second most deprived area in the county in this domain.

The more deprived areas are shown on Map 9. They are all located in the more rural parts of the borough and reflect the more restricted access to key local services experienced by residents.

Graph 9: Spread of National Ranking of all SOAs in Hinckley & Bosworth

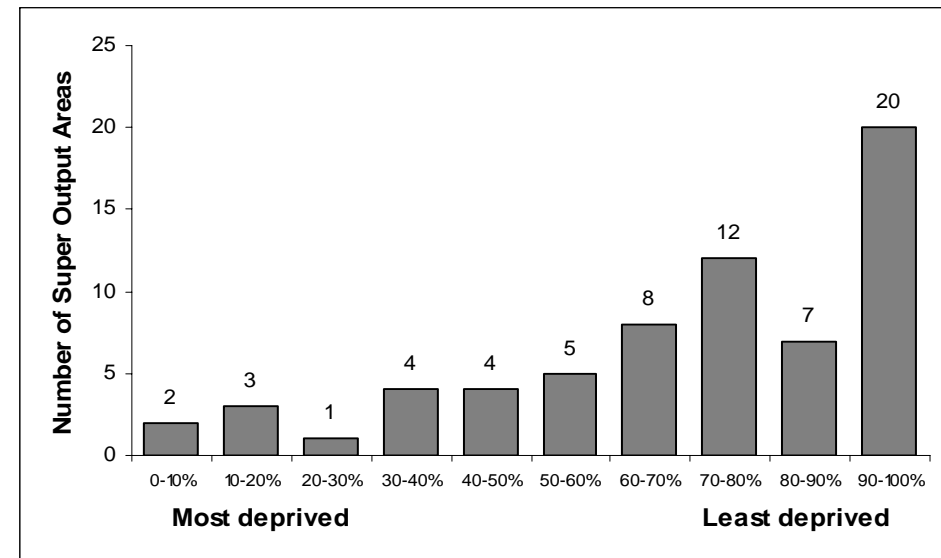
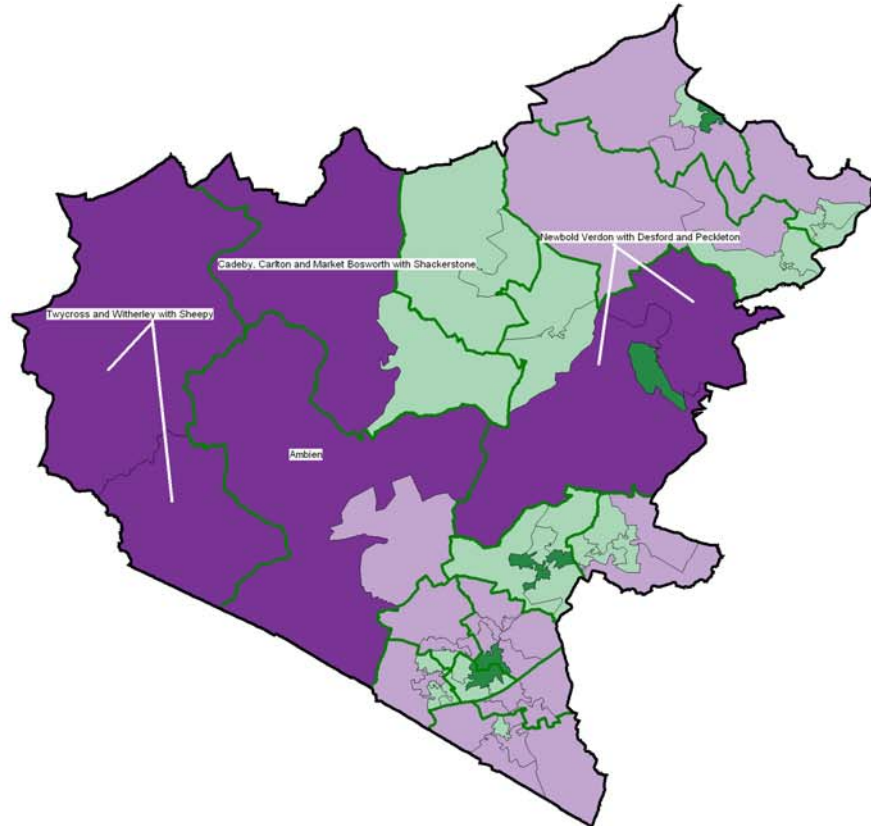


Table 10: Ten most deprived areas in Hinckley and Bosworth

SOA	Ward	Score	District Rank	County Rank	National Rank
E01025882	Twycross & Witherley	45.64	1	2	927
E01025818	Ambien	38.29	2	11	2,797
E01025881	Twycross & Witherley	35.30	3	15	4,048
E01025873	Newbold Verdon	35.24	4	16	4,081
E01025837	Cadeby, Carlton	32.80	5	19	5,398
E01025876	Newbold Verdon	27.16	6	41	9,386
E01025828	Burbage St Catherines	26.44	7	48	9,993
E01025878	Ratby, Bagworth	25.73	8	53	10,617
E01025841	Earl Shilton	23.97	9	74	12,324
E01025860	Hinckley De Montfort	23.95	10	75	12,335

MAP 9: BARRIERS TO HOUSING AND SERVICES

Map 9
Barriers to Housing and Services
 highlighting the 10% most deprived Super Output Areas in Hinckley & Bosworth



Levels of Housing and Services Deprivation in Hinckley & Bosworth
 (Number of Super Output Areas)

- Top 10% - Most Deprived
- 10% to 50%
- 50% to 90%
- Bottom 10% - Least Deprived

10% Most Deprived
 Hinckley & Bosworth Super Output Areas

SOA Code	Ward
1.5882	Twycross and Witherley with Sheepy
2.5818	Ambien
3.5881	Twycross and Witherley with Sheepy
4.5873	Newbold Verdon with Desford and Peckleton
5.5873	Cadeby, Carlton and Market Bosworth
6.5876	Newbold Verdon with Desford and Peckleton

- District Boundary
- Electoral Ward Boundaries
- Super Output Areas

Source: 2001 Census, Output Area Boundaries. Crown copyright 2003. Crown copyright material is reproduced with the permission of the Controller of HMSO.
 © Crown copyright 2006. All rights reserved. Use of this image is limited to viewing on-line and printing use only. Leicestershire County Council, LA16001927.
 Produced by RGI Team, Chief Executives, Leicestershire County Council.
 Source: Office for Deputy Prime Minister 2004

Each Super Output Area has an average of about 1,500 people

LIVING ENVIRONMENT

Indicators

This domain looks at both the indoor and outdoor living environment. The indicators used include:

Indoor Living Environment

- Social and private housing in poor condition
- Houses without central heating

Outdoor Living Environment

- Air quality
- Road traffic accidents involving injury to pedestrians and cyclists

Commentary

There are two Super Output Areas in the borough which are ranked within the 20% most deprived in England and are also within the ten most deprived in the county – part of Hinckley Castle and Hinckley De Montfort wards. There are a further two Super Output Areas which are within the 30% most deprived in England – part of Barwell and Hinckley Castle wards. These two areas are also within the 20 most deprived areas in the county.

The more deprived areas are shown on Map 10.

Graph10: Spread of National Ranking of all SOAs in Hinckley & Bosworth

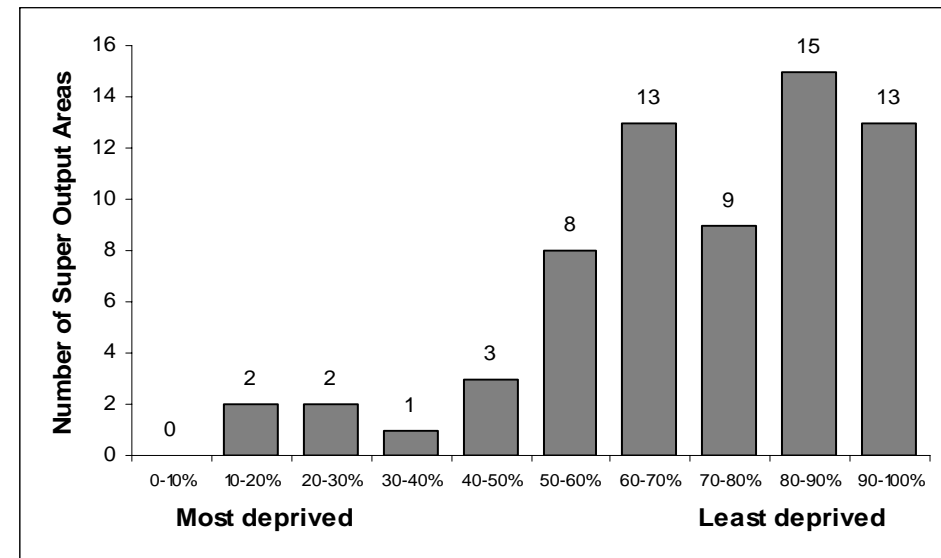
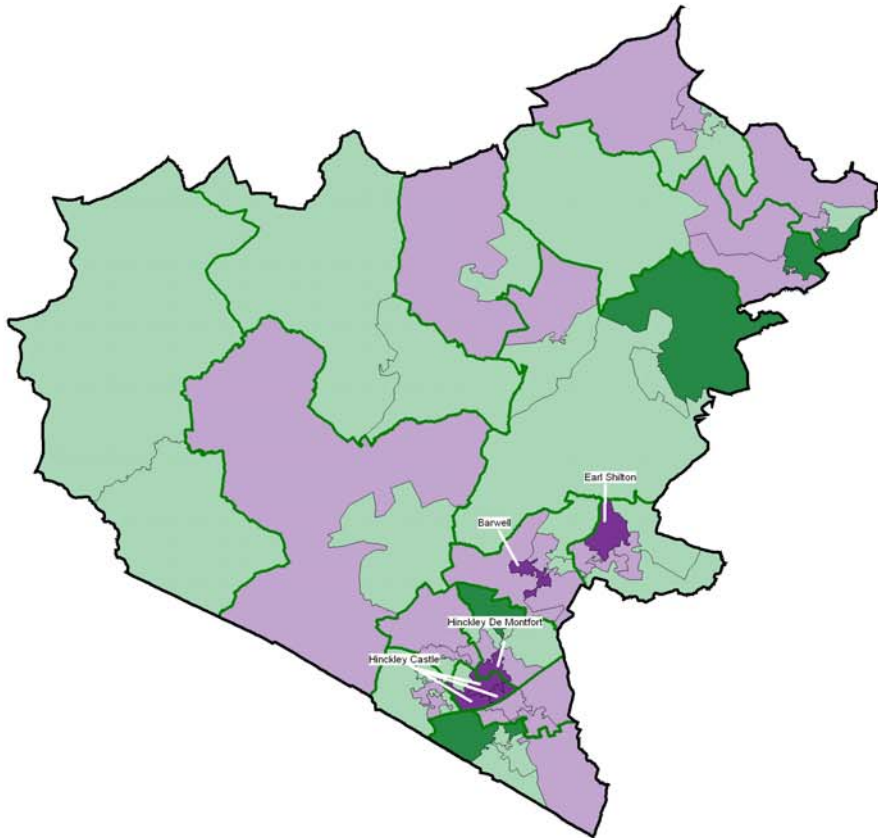


Table 11: Ten most deprived areas in Hinckley and Bosworth

SOA	Ward	Score	District Rank	County Rank	National Rank
E01025852	Hinckley Castle	46.16	1	2	3,361
E01025858	Hinckley De Montfort	36.55	2	9	6,117
E01025821	Barwell	31.99	3	15	7,862
E01025849	Hinckley Castle	30.16	4	18	8,661
E01025843	Earl Shilton	23.06	5	49	12,101
E01025850	Hinckley Castle	19.84	6	61	14,039
E01025857	Hinckley Clarendon	18.05	7	77	15,286
E01025840	Earl Shilton	17.59	8	83	15,639
E01025824	Barwell	16.46	9	94	16,528
E01025830	Burbage St Catherines	16.04	10	98	16,877

MAP 10: LIVING ENVIRONMENT

Map 10
Living Environment Deprivation
 highlighting the 10% most deprived Super Output Areas in Hinckley & Bosworth



Levels of Environment Deprivation in Hinckley & Bosworth
 (Number of Super Output Areas)

- Top 10% - Most Deprived
- 10% to 50%
- 50% to 90%
- Bottom 10% - Least Deprived

10% Most Deprived
 Hinckley & Bosworth Super Output Areas

SOA Code	Ward
1.5852	Hinckley Castle
2.5858	Hinckley De Montfort
3.5819	Barwell
4.5849	Hinckley Castle
5.5843	Earl Shilton
6.5850	Hinckley Castle

- District Boundary
- Electoral Ward Boudaries
- Super Output Areas

Source: 2001 Census, Output Area Boundaries, Crown copyright 2003. Crown copyright material is reproduced with the permission of the Controller of HMSO.
 © Crown copyright 2005. All rights reserved. Use of this image is limited to viewing on-line and printing one copy.
 Leicestershire County Council, LA100019271.
 Produced by R&I Team, Chief Executives
 Leicestershire County Council
 Source: Office for Deputy Prime Minister 2004

Each Super Output Area has an average of about 1,500 people

CRIME DOMAIN

Indicators

This domain measures the rate of recorded crime for four main crime types – burglary, theft, criminal damage and violence.

Commentary

Overall levels of crime deprivation are low in Hinckley and Bosworth with only one Super Output Area ranked within the 20% most deprived in England and another ranked in the 30% most deprived in England. Over two thirds of the Super Output Areas in Hinckley are ranked within the 50% least deprived in England.

The two wards which experience relatively high levels of deprivation in this domain are Hinckley Castle and Earl Shilton wards – both these wards have two Super Output Areas which are ranked in the top four most deprived areas in this domain.

Map 11 shows the areas which are considered to be more deprived.

Graph 11: Spread of National Ranking of SOAs in Hinckley & Bosworth

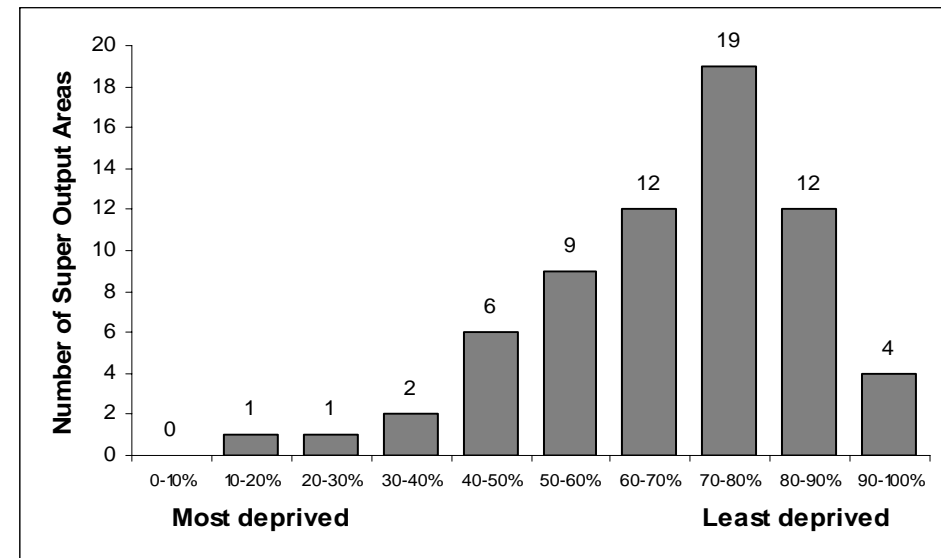
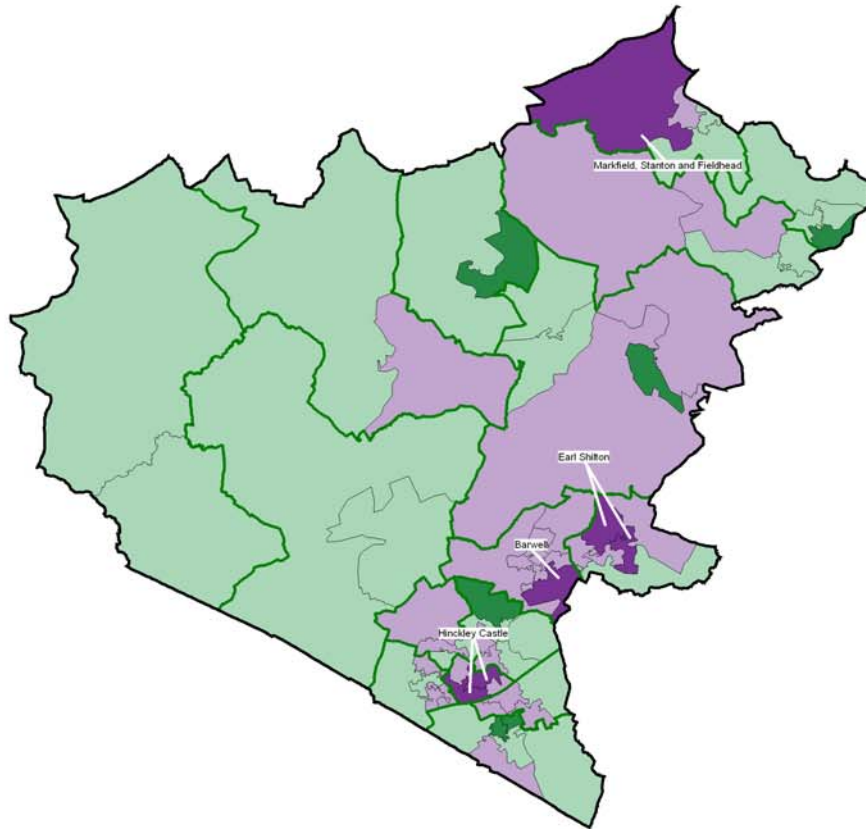


Table 12: Ten most deprived areas in Hinckley and Bosworth

SOA	Ward	Score	District Rank	County Rank	National Rank
E01025852	Hinckley Castle	0.75	1	17	6,327
E01025844	Earl Shilton	0.50	2	35	9,313
E01025843	Earl Shilton	0.29	3	51	12,185
E01025849	Hinckley Castle	0.24	4	58	12,757
E01025871	Markfield, Stanton	0.21	5	66	13,230
E01025824	Barwell	0.16	6	75	13,855
E01025858	Hinckley De Montfort	0.16	7	77	13,980
E01025842	Earl Shilton	0.10	8	82	14,768
E01025857	Hinckley Clarendon	0.03	9	92	15,836
E01025864	Hinckley Trinity	0.01	10	94	16,092

MAP 11: CRIME DOMAIN

Map 11
Crime Deprivation
 highlighting the 10% most deprived Super Output Areas in Hinckley & Bosworth



Levels of Crime Deprivation in Hinckley & Bosworth
 (Number of Super Output Areas)

- Top 10% - Most Deprived
- 10% to 50%
- 50% to 90%
- Bottom 10% - Least Deprived

10% Most Deprived
 Hinckley & Bosworth Super Output Areas

SOA Code	Ward
1.5852	Hinckley Castle
2.5844	Earl Shilton
3.5843	Earl Shilton
4.5849	Hinckley Castle
5.5871	Markfield, Stanton and Fieldhead
6.5824	Barwell

Each Super Output Area has an average of about 1,500 people

- District Boundary
- Electoral Ward Boundaries
- Super Output Areas

Source: 2001 Census, Output Area Boundaries, Crown copyright 2003. Crown copyright material is reproduced with the permission of the Controller of HMSO.
 © Crown copyright 2005. All rights reserved. Use of this image is limited to viewing on-line and printing one copy. Leicestershire County Council, LA100019271.
 Produced by R&I Team, Chief Executives, Leicestershire County Council
 Source: Office for Deputy Prime Minister 2004

APPENDIX 1

The table below shows each Super Output Area in the district, the ward in which it is located along with the ranking within England (where a ranking of 1 = most deprived in England, 32,482 = least deprived in England). For ease of use, any area ranked within the 20% most deprived in England (ranked between 1 and 6,496) has been shaded.

SOA	Ward	IMD	Income	Employment	Health	Education	Barriers	Living Env	Crime	IDAC	IDAOP
E01025817	Ambien	30,449	26,542	25,322	29,691	25,554	22,297	30,723	26,697	29,181	22,454
E01025818	Ambien	20,736	19,046	24,196	25,698	24,047	2,797	17,112	25,951	23,528	14,674
E01025819	Barlestone, Nailstone & Osbaston	24,078	19,012	22,539	22,318	13,973	30,383	21,895	24,492	19,837	18,108
E01025820	Barlestone, Nailstone & Osbaston	28,733	24,867	23,254	26,855	16,009	31,314	30,657	29,999	22,466	22,802
E01025821	Barwell	18,800	18,251	18,251	23,983	9,810	32,000	7,862	20,631	17,496	18,397
E01025822	Barwell	12,700	10,053	11,015	13,945	4,358	31,731	27,337	18,464	10,929	11,975
E01025823	Barwell	15,391	15,245	17,610	19,783	3,618	26,661	18,424	16,486	15,806	16,317
E01025824	Barwell	16,735	17,780	15,965	17,031	7,322	30,916	16,528	13,855	16,597	24,865
E01025825	Barwell	24,295	22,301	24,199	25,311	9,260	30,617	21,531	23,076	21,867	16,665
E01025826	Barwell	23,879	19,130	24,397	24,523	12,751	25,197	28,738	16,646	16,015	17,694
E01025827	Burbage St Catherines	15,980	14,097	13,155	18,444	8,409	21,846	20,526	21,113	14,243	15,472
E01025828	Burbage St Catherines	28,690	27,690	28,823	30,852	24,291	9,993	23,396	24,651	23,242	27,607
E01025829	Burbage St Catherines	11,455	11,469	9,523	10,681	6,248	17,819	17,626	19,292	12,270	12,513
E01025830	Burbage St Catherines	19,331	17,107	16,923	16,260	19,887	16,795	16,877	21,083	19,805	13,377
E01025831	Burbage Sketchley & Stretton	29,135	26,676	27,311	26,179	16,327	26,004	25,974	28,861	28,243	19,700
E01025832	Burbage Sketchley & Stretton	31,338	32,003	31,062	30,101	23,665	21,630	28,889	20,135	31,554	30,041
E01025833	Burbage Sketchley & Stretton	26,968	23,790	24,271	27,100	22,012	20,507	18,315	24,707	21,897	23,899
E01025834	Burbage Sketchley & Stretton	31,443	29,023	28,131	28,714	27,146	24,261	30,011	26,228	30,279	27,183
E01025835	Burbage Sketchley & Stretton	28,808	31,127	21,945	25,831	26,225	13,077	31,281	24,955	31,992	30,677
E01025836	Burbage Sketchley & Stretton	28,958	25,723	24,947	26,695	18,785	20,990	30,940	30,148	23,879	24,669
E01025837	Cadeby, Carlton & Mkt Bosworth	27,651	29,510	27,696	26,394	29,787	5,398	25,873	23,674	27,361	30,918
E01025838	Cadeby, Carlton & Mkt Bosworth	31,171	26,634	27,652	28,061	30,514	28,712	27,762	22,673	31,083	21,313
E01025839	Earl Shilton	21,958	21,132	23,198	27,079	7,463	31,151	17,874	17,248	19,213	21,562
E01025840	Earl Shilton	19,235	18,015	19,649	23,237	7,887	26,063	15,639	19,481	17,611	20,801
E01025841	Earl Shilton	24,951	25,101	21,904	25,279	16,336	12,324	27,750	24,391	26,823	22,431
E01025842	Earl Shilton	16,503	11,839	19,265	18,750	6,958	24,458	27,187	14,768	10,377	16,860
E01025843	Earl Shilton	15,200	12,452	18,263	18,161	7,510	30,063	12,101	12,185	9,987	12,894

Continued on next page

APPENDIX 1

SOA	Ward	IMD	Income	Emplo yment	Health	Educ- ation	Barriers	Living Env	Crime	IDAC	IDAOP
E01025844	Earl Shilton	8,230	7,594	7,109	11,719	2,392	29,719	17,580	9,313	8,640	5,817
E01025845	Grobby	31,862	31,502	30,176	28,777	27,347	27,734	24,386	26,052	32,087	29,916
E01025846	Grobby	31,421	29,451	28,251	31,376	23,067	25,344	28,979	27,049	27,559	30,278
E01025847	Grobby	31,938	30,833	30,128	27,647	22,749	29,909	31,278	29,122	31,750	26,050
E01025848	Grobby	21,844	17,289	21,620	23,833	12,857	20,884	19,544	24,134	15,450	17,956
E01025849	Hinckley Castle	17,601	18,100	15,977	22,050	12,345	30,607	8,661	12,757	18,587	18,665
E01025850	Hinckley Castle	17,190	14,283	16,404	14,347	12,151	31,011	14,039	20,038	17,534	10,385
E01025851	Hinckley Castle	27,747	30,026	23,363	25,276	14,766	26,080	26,515	21,767	27,959	30,324
E01025852	Hinckley Castle	12,707	13,956	14,091	15,172	13,583	31,823	3,361	6,327	13,115	16,605
E01025853	Hinckley Clarendon	28,281	26,291	27,647	29,188	15,390	15,495	30,018	27,800	21,144	27,795
E01025854	Hinckley Clarendon	25,340	24,600	25,418	21,583	11,560	25,062	25,718	22,761	23,627	17,168
E01025855	Hinckley Clarendon	21,528	18,054	24,088	22,644	7,636	23,695	23,866	23,661	15,344	17,466
E01025856	Hinckley Clarendon	10,519	6,731	7,301	9,753	8,509	28,052	24,545	18,590	6,482	8,198
E01025857	Hinckley Clarendon	21,956	20,786	23,419	25,250	10,829	26,380	15,286	15,836	21,544	17,544
E01025858	Hinckley De Montfort	16,444	16,162	16,124	19,471	12,618	32,093	6,117	13,980	16,525	20,100
E01025859	Hinckley De Montfort	29,708	29,700	25,842	28,444	22,004	22,901	20,608	26,722	30,426	27,978
E01025860	Hinckley De Montfort	30,783	30,776	29,557	29,767	23,820	12,335	31,299	29,708	30,691	26,917
E01025861	Hinckley De Montfort	27,347	24,447	22,995	23,178	20,485	19,251	30,430	26,986	28,050	16,980
E01025862	Hinckley De Montfort	29,140	28,334	23,805	28,026	21,584	19,547	26,555	27,412	24,476	29,760
E01025863	Hinckley De Montfort	18,327	14,945	19,049	22,336	7,251	23,599	20,837	21,109	13,665	14,448
E01025864	Hinckley Trinity	24,262	23,672	25,348	24,810	14,206	17,003	23,678	16,092	27,132	15,441
E01025865	Hinckley Trinity	16,926	13,794	15,591	20,310	7,076	24,777	20,510	24,160	14,317	13,012
E01025866	Hinckley Trinity	9,739	8,954	7,353	12,295	3,350	19,575	22,216	19,070	9,453	12,927
E01025867	Hinckley Trinity	25,378	25,828	22,751	19,797	11,708	27,778	27,401	25,186	26,497	18,458
E01025868	Markfield, Stanton & Fieldhead	24,093	22,568	18,938	21,154	16,093	30,132	20,997	23,020	26,650	21,325
E01025869	Markfield, Stanton & Fieldhead	28,903	21,590	26,081	25,328	20,811	31,707	29,963	25,717	20,531	19,098
E01025870	Markfield, Stanton & Fieldhead	28,199	25,692	26,667	26,090	19,988	15,130	28,133	27,446	30,497	19,941
E01025871	Markfield, Stanton & Fieldhead	21,925	20,726	21,471	23,285	18,047	15,460	20,662	13,230	19,147	22,941
E01025872	Newbold Verdon	30,309	29,119	24,001	28,263	19,855	31,117	29,022	26,506	26,521	26,965
E01025873	Newbold Verdon	25,341	26,641	27,386	28,526	22,819	4,081	26,664	22,087	27,750	22,303
E01025874	Newbold Verdon	27,285	22,910	23,643	22,385	14,591	32,138	30,289	29,704	19,671	23,673

Continued on next page

APPENDIX 1

SOA	Ward	IMD	Income	Employment	Health	Education	Barriers	Living Env	Crime	IDAC	IDAOP
E01025875	Newbold Verdon	16,453	13,634	15,860	18,489	5,591	29,735	21,697	23,379	14,063	15,230
E01025876	Newbold Verdon	25,830	24,449	24,907	18,661	28,001	9,386	31,433	21,437	31,080	13,539
E01025877	Ratby, Bagworth & Thornton	26,713	25,200	23,703	25,937	14,324	31,241	19,775	24,647	26,422	17,657
E01025878	Ratby, Bagworth & Thornton	14,186	9,594	12,945	16,606	13,415	10,617	25,725	18,343	5,994	19,188
E01025879	Ratby, Bagworth & Thornton	17,451	15,265	17,806	20,988	7,909	17,688	21,060	19,855	15,520	17,542
E01025880	Ratby, Bagworth & Thornton	28,857	28,067	23,114	24,956	17,603	26,662	31,109	26,734	26,195	29,026
E01025881	Twycross & Witherley	25,747	27,865	25,995	26,791	24,734	4,048	28,109	24,158	23,667	28,330
E01025882	Twycross & Witherley	23,343	27,862	28,201	27,374	25,692	927	27,707	25,214	29,945	21,955



If you require information contained in this publication in another version eg large print, Braille, tape or an alternative language please call 0116 265 8262 or email sgeddes@leics.gov.uk
