

Office of the Deputy Prime Minister
Indices of Deprivation 2004
Key Findings in Melton

January 2005



Report Produced by Research & Information Team
Chief Executives Department
Leicestershire County Council



CONTENTS

Contents

	Page
Introduction	2
District Summary	3
Geography	4
Local Data	6
Index of Multiple Deprivation	8
Income Deprivation	10
Income Deprivation Affecting Children	12
Income Deprivation Affecting Older People	14
Employment Deprivation	16
Health Deprivation and Disability	18
Education, Skills and Training Deprivation	20
Barriers to Housing and Services	22
Living Environment	24
Crime Deprivation	26
Appendix 1	28

INTRODUCTION

Introduction

The Indices of Deprivation 2004 are produced by the Office of the Deputy Prime Minister (ODPM). They are an attempt to measure deprivation in a consistent way for small areas across England. They were first developed in the mid 1990's using data from the 1991 Census. Since then the Indices have been revised several times using updated data and new indicators to reflect change. They have been widely used to target regeneration resources through the regional allocation of the SRB Challenge Fund.

In recent years with the release of the Indices of Deprivation (ID2000) in July 2000, use of the Indices has become more widespread. Both central and local government places a lot of value on the Indices and the Audit Commission uses it as one measure for the Quality of Life Indicators.

Indices of Deprivation 2004

The Indices of Deprivation 2004 (ID2004) were released in May 2004. The ID2004 are based on the approach, structure and methodology that was used to create the previous Indices of Deprivation 2000. The ID2004 updates the ID2000 in two key ways:

- more up-to-date data has been used (mostly 2001 data), and
- new measures have been incorporated as new and improved data sources have become available.

These changes however mean that the two indices cannot be directly compared. In addition many ward boundaries have changed since the release of the 2000 data meaning that straightforward comparisons cannot be made. Therefore change over time cannot be identified.

This Report

This report presents the results of the Indices of Deprivation 2004 in Melton borough.

It considers the summary measures used to score and rank the borough in relation to other Local Authority Districts in England.

It also includes details of different aspects of deprivation affecting smaller areas within the borough. A series of maps are included and illustrate where the relatively higher levels of deprivation are located.

Leicestershire County Report

A report considering the Indices of Deprivation 2004 in more detail across all districts in Leicestershire has also been produced. It is available to download at www.leics.gov.uk/statistics, or by using the contact details below.

Further Information

Further information is available from www.odpm.gov.uk

If you require further guidance, please contact:

Sarah Geddes
Research & Information Team
Chief Executives Department
Leicestershire County Council

E: sgeddes@leics.gov.uk

T: 0116 265 8262

SUMMARY

Melton Borough Summary

ODPM uses six summary measures to rank district authorities in England. The most commonly used measure is the Rank of Average Rank which measures the average levels of deprivation across the borough. This shows that Melton borough is ranked 293rd out of the 354 district authorities in England, where 1=most deprived and 354=least deprived. Table 1 below shows that Blaby, Harborough and Oadby and Wigston are ranked as less deprived in Leicestershire.

Table 1: Comparison with other districts in Leicestershire

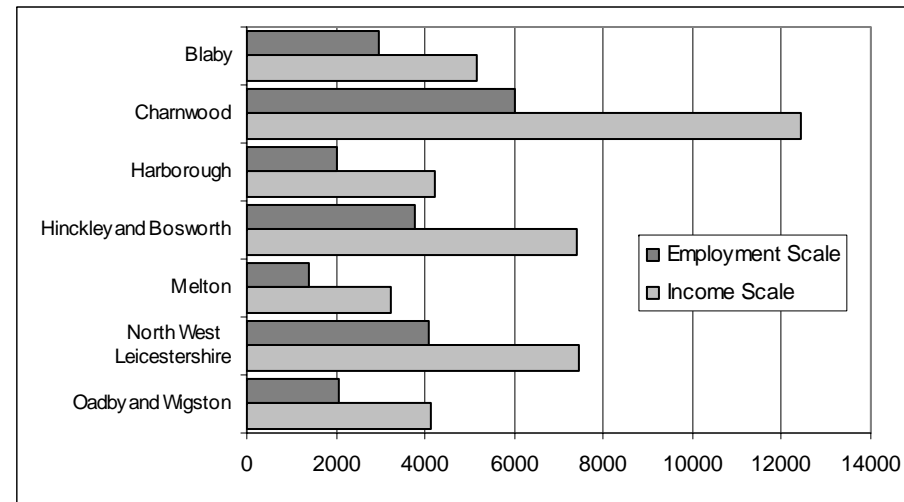
District	Rank of average rank
North West Leicestershire	195
Charnwood	262
Hinckley and Bosworth	275
Melton	293
Oadby and Wigston	304
Blaby	316
Harborough	336

Other measures which are used to rank district authorities include the Rank of Local Concentration. This measures the severity of multiple deprivation in each authority, measuring 'hot spots' of deprivation. Melton is ranked 298th in England showing that the borough experiences relatively low levels of deprivation.

The districts are also ranked on an Income and Employment Scale. This measures the number of people who are considered to be either income or employment deprived in each district.

The graph below shows that 3,239 people are income deprived and 1,371 people are employment deprived in Melton.

Graph 1: Number of people who are income or employment deprived by district



The examination of Super Output Area data in each domain highlights the locations where deprivation is concentrated in the borough.

GEOGRAPHY

Indices of Deprivation: Geography

For the first time, the Indices of Deprivation 2004 have been released at Super Output Area (SOA) lower level – where previous Indices were released at ward level.

Super Output Areas are a new national geography created by the Office for National Statistics. They are created by combining a number of Output Areas which were created for the 2001 Census.

Super Output Areas are small areas of broadly consistent population size across the country, each containing approximately 1,500 people.

The use of Super Output Areas (lower level) as a basis for the Indices enables smaller, sub-ward areas of deprivation to be identified. Such areas may previously have been hidden / masked by the use of ward level data.

Melton borough contains 30 Super Output Areas.

Table 2: Number of SOAs by area

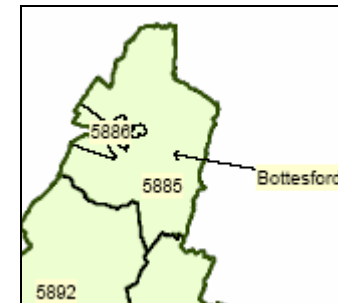
	Number of SOAs
England	32,482
Leicestershire	396
Melton Borough	30

In all cases, a ranking of 1 signifies the most deprived area. In respect of the national ranking which is given in each of the following tables, a ranking between 1 and 3,248 denotes that the area is ranked within the 10% most deprived in England, and a ranking between 1 and 6,496 denotes that the area is ranked within the 20% most deprived in England.

Map 1 shows the location of each of the Super Output Areas in Melton borough. Each Super Output Area is identified by a nine digit code, eg. E0102**5892**. For ease of use, Map 1 lists only the last four digits.

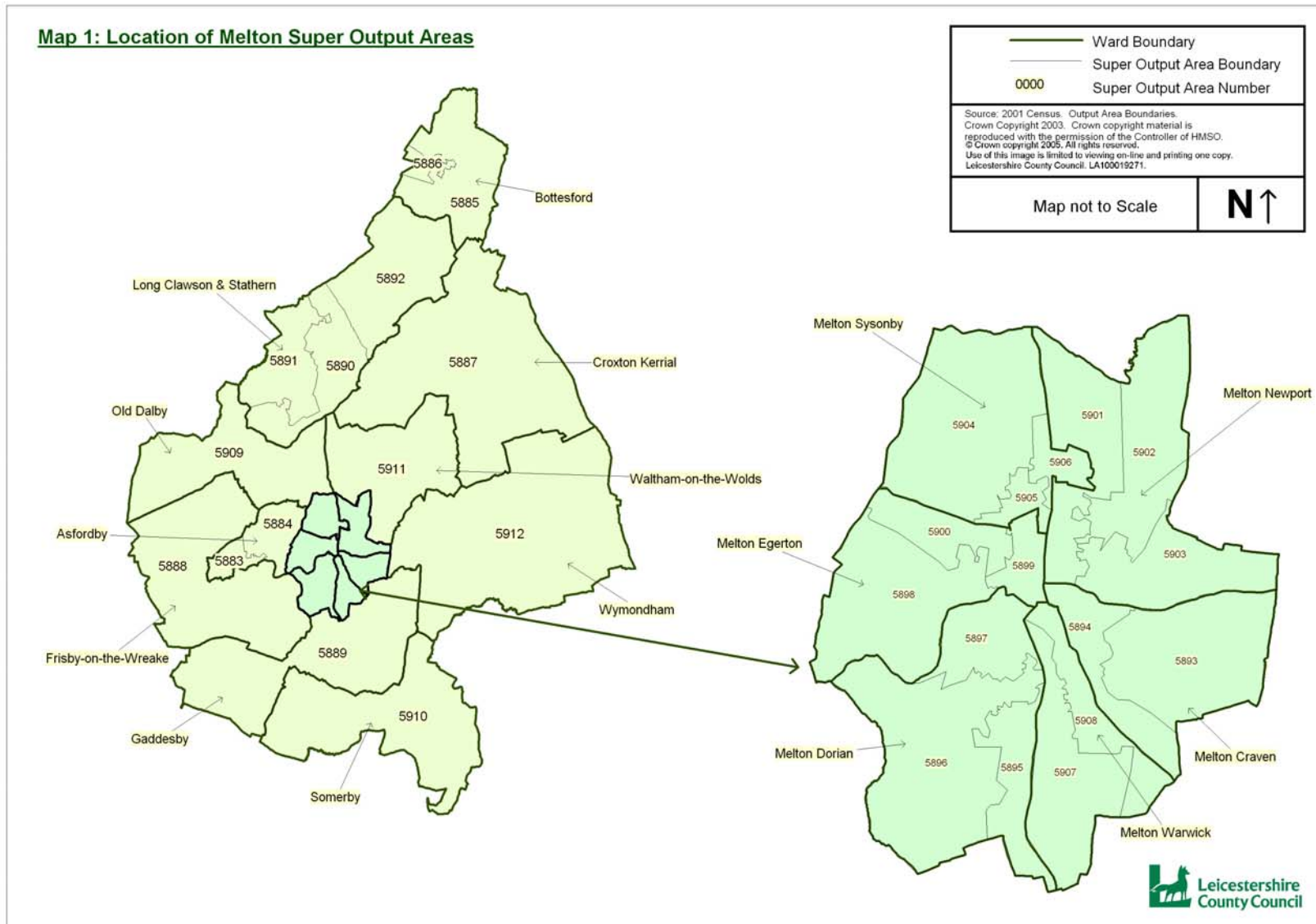
The picture below shows how a number of Super Output Areas (normally between two and five) are located within ward boundaries, so for example Bottesford ward contains two SOAs – 5885 and 5886.

Picture 1: Extract of Map 1 showing SOAs within ward boundaries



For information, this report also contains the ward in which each SOA is located. However, where a ward name is given, users should be aware that it relates only to part of the ward, and not necessarily the entire ward.

MAP 1: LOCATION OF SOAS



LOCAL DATA

LOCAL DATA

Local data

The Index of Multiple Deprivation 2004 (IMD2004) combines indicators across seven domains into a single deprivation score and rank for each Super Output Area. The domains are shown below:

- Income Deprivation
- Employment Deprivation
- Health Deprivation and Disability
- Education, Skills and Training Deprivation
- Barriers to Housing and Services
- Living Environment Deprivation
- Crime

There are also two supplementary domains which measure income deprivation affecting children (IDAC) and income deprivation affecting older people (IDAOP).

These domains are given the following weighting when calculating the overall Index of Multiple Deprivation:

	Weighting
Income Deprivation	22.5%
Employment Deprivation	22.5%
Health Deprivation and Disability	13.5%
Education, Skills and Training Deprivation	13.5%
Barriers to Housing and Services	9.3%
Living Environment Deprivation	9.3%
Crime	9.3%

The following sections consider the relative levels of deprivation experienced in each domain in Melton.

Information on the indicators used to compile each domain is listed along with a table showing the ten most deprived SOAs in the borough in each domain.

For comparison, some tables also include the ranking in Leicestershire (where 1=most deprived, 396=least deprived) and in England (where 1=most deprived, 32,482=least deprived).

Each section also includes a graph which shows the number of Super Output Areas in each domain and how they are ranked within England. This gives a visual representation of the spread of relative deprivation in each domain in the borough, showing how many areas are in the 10% most deprived and 10% least deprived in England.

This information is accompanied by Maps 2 to 11 which show the location of the most deprived areas in each domain in the borough. The 10% most deprived and 10% least deprived areas in Melton are highlighted on the maps.

A comprehensive list of national ranks for each Super Output Area in each domain is included in appendix 1.

INDEX OF MULTIPLE DEPRIVATION

Indicators

The Index of Multiple Deprivation combines the indicators across the seven domains (listed below) into a single deprivation score and rank for each Super Output Area

- Income
- Employment
- Health & Disability
- Education & Skills
- Barriers to Housing & Services
- Living Environment
- Crime

Commentary

The Index of Multiple Deprivation considers all aspects of deprivation experienced by particular areas. Overall levels of deprivation in Melton are low, with no Super Output Areas ranked within the 30% most deprived in England and only five areas ranked in the 50% most deprived in England.

Part of Melton Egerton ward is considered to be the most deprived in the borough – shown on Map 2. However, it is ranked only 10,819th most deprived in England, and 19th most deprived in the county. The other areas in the borough that are ranked highly include parts of Melton Sysonby and Melton Craven wards.

Graph 2: Spread of National Ranking of all SOAs in Melton

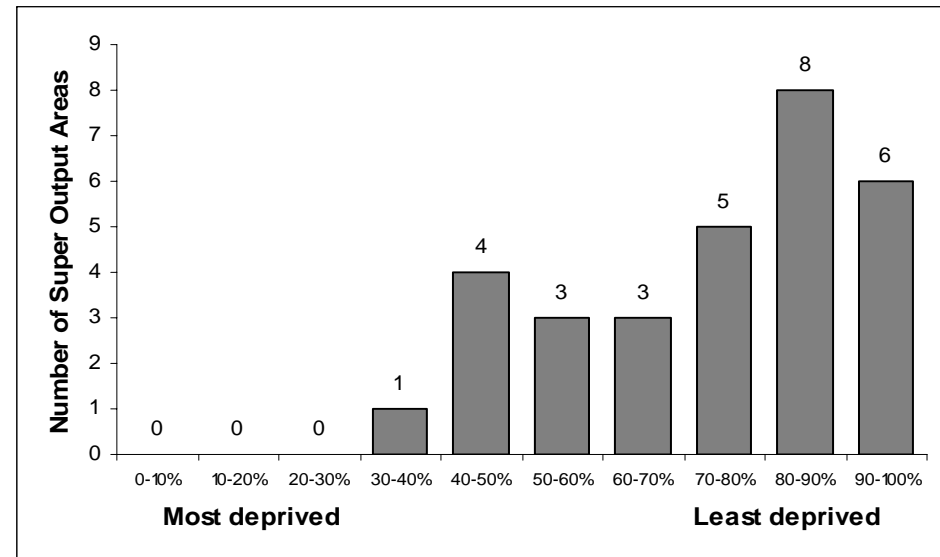
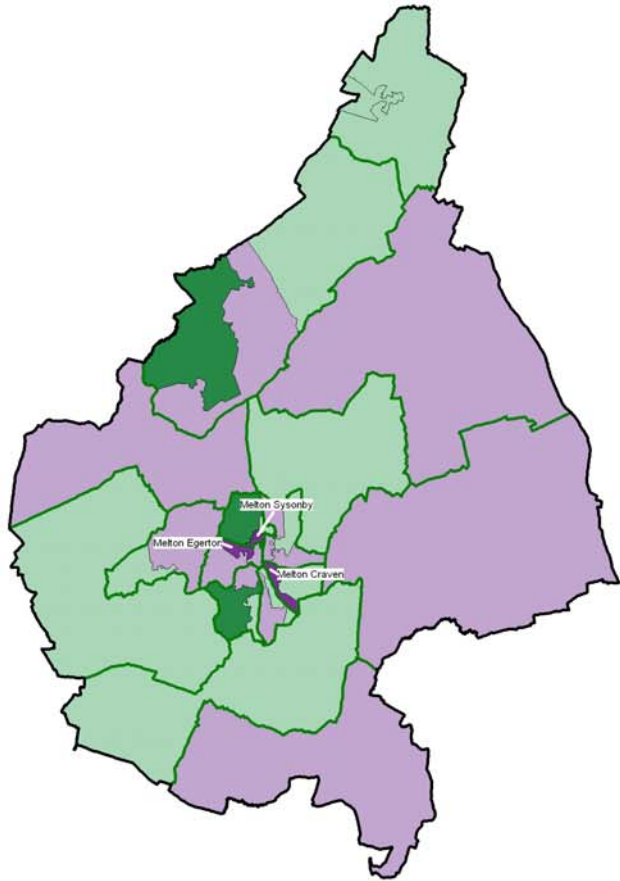


Table 3: Ten most deprived areas in Melton

SOA	Ward	Score	District Rank	County Rank	National Rank
E01025900	Melton Egerton	24.56	1	19	10,819
E01025905	Melton Sysonby	20.35	2	43	13,607
E01025894	Melton Craven	19.96	3	47	13,892
E01025907	Melton Warwick	18.93	4	54	14,668
E01025899	Melton Egerton	18.58	5	56	14,938
E01025898	Melton Egerton	15.89	6	77	17,265
E01025884	Asfordby	14.68	7	93	18,475
E01025912	Wymondham	14.08	8	100	19,081
E01025897	Melton Dorian	13.30	9	113	19,964
E01025887	Croxtton Kerrial	12.36	10	131	21,068

MAP 2: INDEX OF MULTIPLE DEPRIVATION

Map 2
Index of Multiple Deprivation
 highlighting the 10% most deprived Super Output Areas for Melton



Levels of Multiple Deprivation in Melton
 (Number of Super Output Areas)

- Top 10% - Most Deprived
- 10% to 50%
- 50% to 90%
- Bottom 10% - Least Deprived

10% Most Deprived
 Melton Super Output Areas

SOA Code	Ward
1.5900	Melton Egerton
2.5905	Melton Sysonby
3.5894	Melton Craven

- District Boundary
- Electoral Ward Boudaries
- Super Output Areas

Source: 2001 Census, Output Area Boundaries, Crown copyright 2003. Crown copyright material is reproduced with the permission of the Controller of HMSO.
 © Crown copyright 2005. All rights reserved.
 Use of this image is limited to viewing on-line and printing one copy.
 Leicestershire County Council, LA100010271.
 Produced by R&I Team, Chief Executives
 Leicestershire County Council
 Source: Office for Deputy Prime Minister 2004

Each Super Output Area has an average of about 1,500 people

INCOME DEPRIVATION

Indicators

The income deprivation domain measures the proportion of the population living below 60% of median income. A number of indicators are used to compile this domain. These include:

- Adults and children in Income Support households
- Adults and children in Income Based Job Seekers Allowance households
- Adults and children in Working Family Tax Credit households
- Adults and children in Disabled Persons Tax Credit households
- Supported asylum seekers in receipt of subsistence only and accommodation support

Commentary

The score gives the proportion of the population who are considered to be income deprived. In Melton there are **3,239 people** who are considered to be income deprived. Graph 3 shows the spread of rankings for all Super Output Areas in the borough. It shows that no areas are ranked within the 20% most deprived in England, and only six are ranked within the 50% most deprived.

Table 4 lists the number of people in the most deprived Super Output Areas who are income deprived.

Map 3 shows the most deprived areas in the borough in this domain. Parts of Melton Sysonby, Melton Egerton and Melton Warwick wards are ranked as being the most deprived, and each of these Super Output Areas contain over 200 people who are income deprived.

Graph 3: Spread of National Ranking of all SOAs in Melton

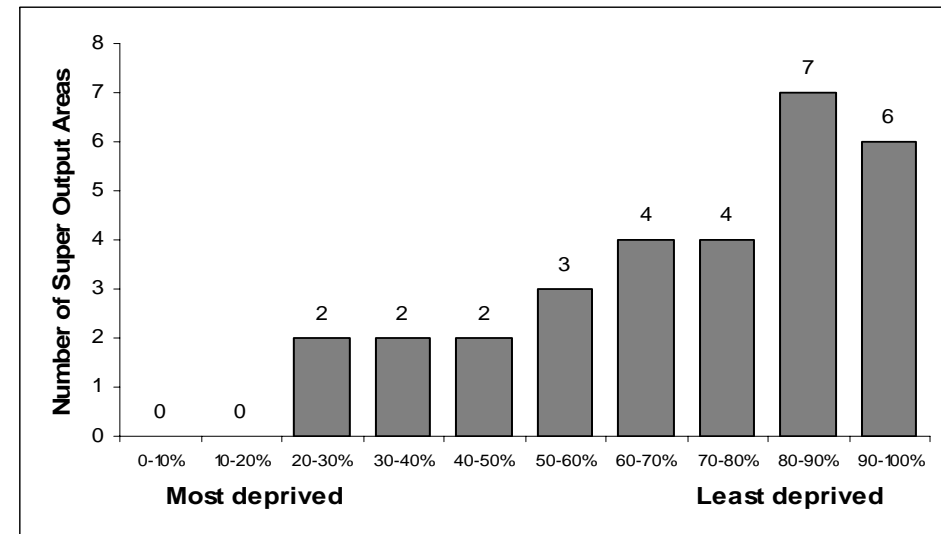
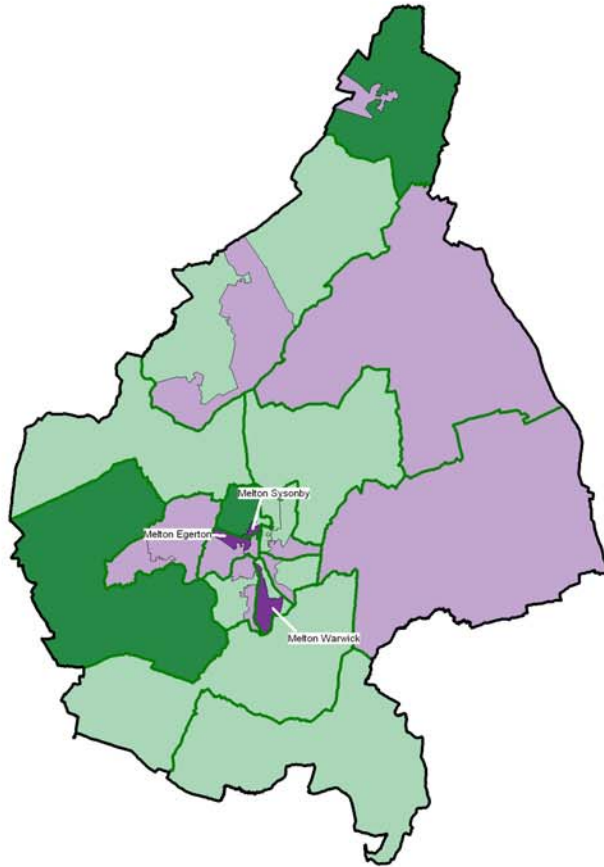


Table 4: Ten most deprived areas in Melton

SOA	Ward	Score	Total pop	Number income deprived	National Rank
E01025905	Melton Sysonby	0.19	1,526	290	8,196
E01025900	Melton Egerton	0.19	1,525	290	8,300
E01025907	Melton Warwick	0.16	1,726	276	10,368
E01025894	Melton Craven	0.14	1,424	199	11,523
E01025897	Melton Dorian	0.12	1,445	173	13,771
E01025899	Melton Egerton	0.12	1,059	127	14,073
E01025898	Melton Egerton	0.10	1,643	164	16,297
E01025884	Asfordby	0.10	1,496	150	16,749
E01025903	Melton Newport	0.08	1,485	119	19,134
E01025912	Wymondham	0.08	1,532	123	19,719

MAP 3: INCOME DEPRIVATION

Map 3
Income Deprivation
 highlighting the 10% most deprived Super Output Areas in Melton



Levels of Income Deprivation in Melton
 (Number of Super Output Areas)

- Top 10% - Most Deprived
- 10% to 50%
- 50% to 90%
- Bottom 10% - Least Deprived

10% Most Deprived
 Melton Super Output Areas

SOA Code	Ward
1.5905	Melton Sysonby
2.5900	Melton Egerton
3.5907	Melton Warwick

- District Boundary
- Electoral Ward Boudaries
- Super Output Areas

Source: 2001 Census, Output Area Boundaries.
 Crown copyright 2003. Crown copyright material
 is reproduced with the permission of the Controller
 of HMSO.

© Crown copyright 2005. All rights reserved.
 Use of this image is limited to viewing on-line and printing non-copy.
 Leicestershire County Council. LA100010271.

Produced by R&I Team, Chief Executives
 Leicestershire County Council

Source: Office for Deputy Prime Minister 2004

Each Super Output Area has an average of about 1,500 people

INCOME DEPRIVATION AFFECTING CHILDREN

Indicators

This is a supplementary indicator that measures the proportion of children under 16 in an area who live in income deprived households.

Commentary

Overall, there are 984 children in Melton living in households which are considered to be income deprived. This accounts for 10.4% of the children in the borough aged under 16 years. More than two thirds of these children live in the ten most deprived Super Output Areas.

Of the 3,239 people who are income deprived in Melton, 30.4% are aged 16 or under.

Map 4 shows the locations of the Super Output Areas that are ranked as most deprived in the borough. It should be remembered that only two Super Output Areas within the borough are ranked in the 30% most deprived in England – as shown on graph 4.

The wards with the highest numbers of children living in households which are income deprived are Melton Egerton (196 children) and Melton Sysonby (167 children).

Graph 4: Spread of National Ranking of all SOAs in Melton

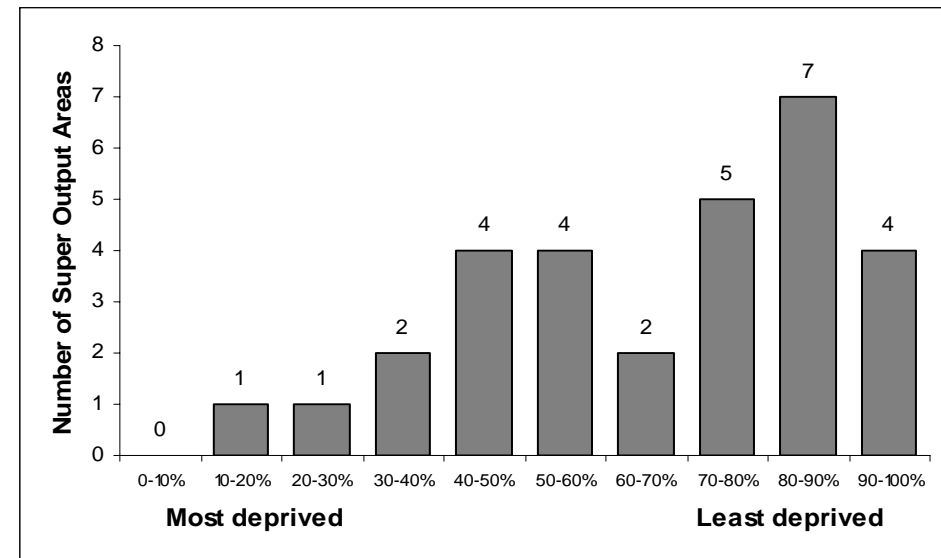
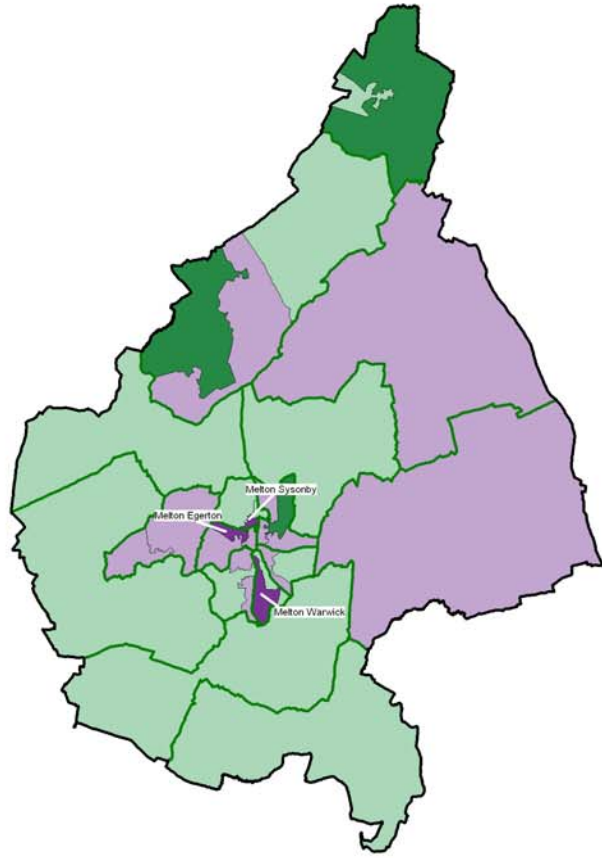


Table 5: Ten most deprived areas in Melton

SOA	Ward	Score	Total <16yrs	Number deprived	National Rank
E01025905	Melton Sysonby	0.36	374	136	5,776
E01025900	Melton Egerton	0.31	384	121	7,449
E01025907	Melton Warwick	0.24	378	89	10,665
E01025897	Melton Dorian	0.22	311	68	11,566
E01025899	Melton Egerton	0.17	212	37	14,209
E01025894	Melton Craven	0.16	209	34	14,674
E01025898	Melton Egerton	0.15	257	39	15,676
E01025895	Melton Dorian	0.14	356	51	16,118
E01025903	Melton Newport	0.13	251	33	17,150
E01025890	Long Clawson & Stathern	0.13	306	40	17,220

MAP 4: INCOME DEPRIVATION AFFECTING CHILDREN

Map 4
Income Deprivation Affecting Children
 highlighting the 10% most deprived Super Output Areas in Melton



Levels of Income Deprivation Affecting Children in Melton
 (Number of Super Output Areas)

- Top 10% - Most Deprived**
- 10% to 50%**
- 50% to 90%**
- Bottom 10% - Least Deprived**

10% Most Deprived
Melton Super Output Areas

SOA Code	Ward
1.5905	Sysonby
2.5900	Melton Egerton
3.5907	Melton Warwick

- District Boundary**
- Electoral Ward Boundaries**
- Super Output Areas**

Source: 2001 Census, Output Area Boundaries.
 Crown copyright 2003. Crown copyright material is reproduced with the permission of the Controller of HMSO.

© Crown copyright 2005. All rights reserved.
 Use of this image is limited to viewing on line and printing on copy.
 Leicestershire County Council, LA10001021.
 Produced by R&I Team, Chief Executives
 Leicestershire County Council

Each Super Output Area has an average of about 1,500 people

Source: Office for Deputy Prime Minister 2004

INCOME DEPRIVATION AFFECTING OLDER PEOPLE

Indicators

This is a supplementary indicator that measures the proportion of people aged over 60 years in an area who live in income deprived households.

Commentary

Overall there are 990 people aged over 60 living in income deprived households. This accounts for 9.7% of the people aged over 60 in the borough.

It also shows that of the 3,239 people who are income deprived in Melton, 30.6% are aged over 60.

Graph 5 shows that there are eight Super Output Areas ranked within the 50% most deprived in England in this domain. One of these areas, part of Melton Craven is ranked within the 30% most deprived in England.

Map 5 shows the location of the areas which are ranked as most deprived in the borough. It shows the range of relative deprivation which can be experienced by an area – Melton Warwick ward contains two Super Output Areas, one of which is the second most deprived in the borough and the other is the least deprived in the borough.

Graph 5: Spread of National Ranking of all SOAs in Melton

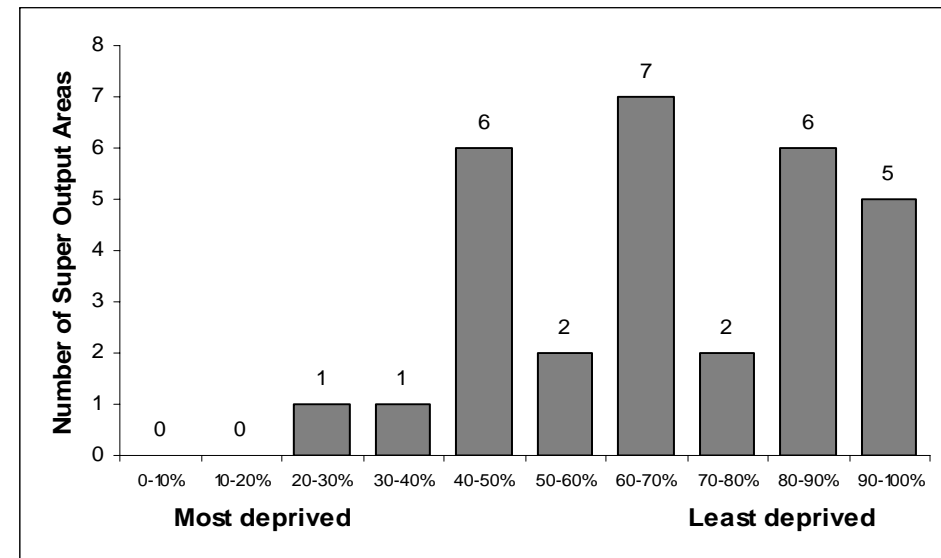
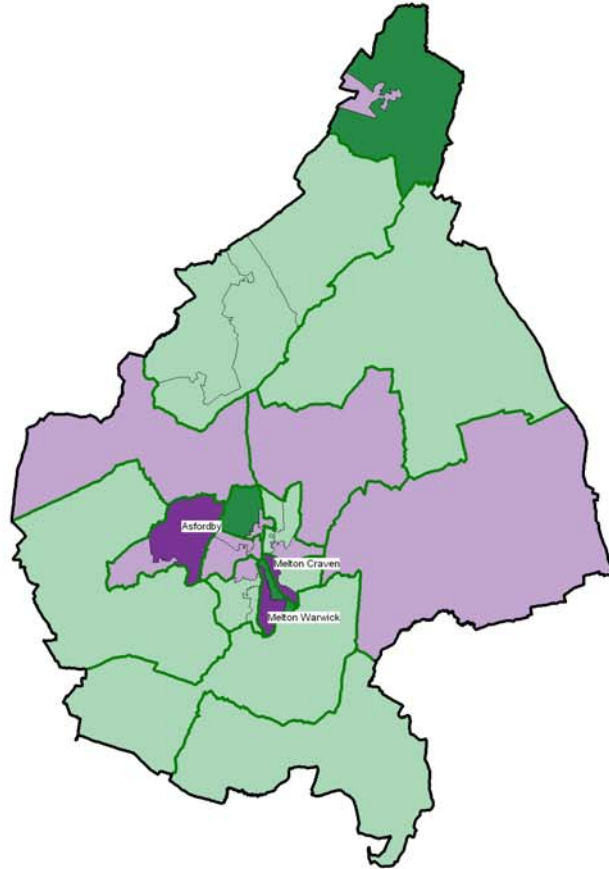


Table 6: Ten most deprived areas in Melton

SOA	Ward	Score	Total >60yrs	Number deprived	National Rank
E01025894	Melton Craven	0.20	468	93	9,393
E01025907	Melton Warwick	0.19	451	87	9,984
E01025884	Asfordby	0.16	351	56	13,237
E01025897	Melton Dorian	0.15	267	40	14,342
E01025911	Waltham-on-the-Wolds	0.15	403	59	14,644
E01025905	Melton Sysonby	0.14	298	43	15,067
E01025886	Bottesford	0.14	477	65	16,066
E01025899	Melton Egerton	0.14	143	19	16,083
E01025903	Melton Newport	0.12	250	30	18,378
E01025912	Wymondham	0.12	301	36	18,390

MAP 5: INCOME DEPRIVATION AFFECTING OLDER PEOPLE

Map 5
Income Deprivation Affecting Older People
 highlighting the 10% most deprived Super Output Areas in Melton



Levels of Income Deprivation Affecting Older People in Melton
 (Number of Super Output Areas)

- Top 10% - Most Deprived
- 10% to 50%
- 50% to 90%
- Bottom 10% - Least Deprived

10% Most Deprived
Melton Super Output Areas

SOA Code	Ward
1.5894	Melton Craven
2.5907	Melton Warwick
3.5884	Asfordby

- District Boundary
- Electoral Ward Boundaries
- Super Output Areas

Source: 2001 Census, Output Area Boundaries
 Crown copyright 2003. Crown copyright material
 is reproduced with the permission of the Controller
 of HMSO
 © Crown copyright 2005. All rights reserved.
 Use of this map is limited to viewing on-line and printing one copy.
 Leicestershire County Council, LA100010271.

Produced by R&I Team, Chief Executives
 Leicestershire County Council

Source: Office for Deputy Prime Minister 2004

Each Super Output Area has an average of about 1,500 people

EMPLOYMENT DEPRIVATION

Indicators

The employment deprivation domain measures the proportion of the working age population that are involuntarily excluded from the world of work. It includes both those who are registered as unemployed, but also includes elements of the more 'hidden unemployed' such as those who are out of the workforce through sickness. The indicators used are:

- Unemployment claimant count
- Incapacity Benefit claimants
- Severe Disablement Allowance claimants
- Participants in New Deal

Commentary

Overall levels of deprivation are low in Melton with no areas ranked within the 30% most deprived in the country, and only four ranked within the 50% most deprived in England. There are no SOAs in Melton which are ranked within the 25 most deprived in the county.

In Melton, there are **1,371 people** who are employment deprived.

Graph 6: Spread of National Ranking of all SOAs in Melton

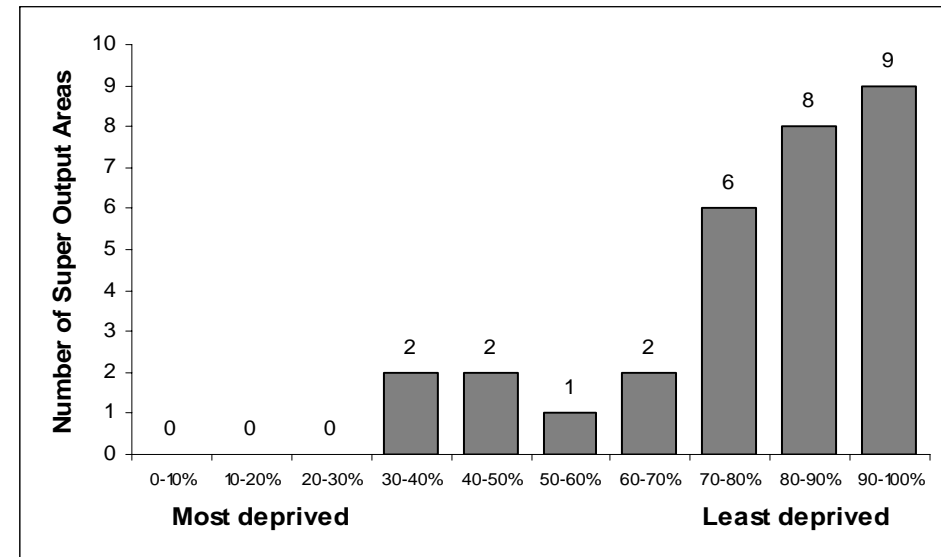
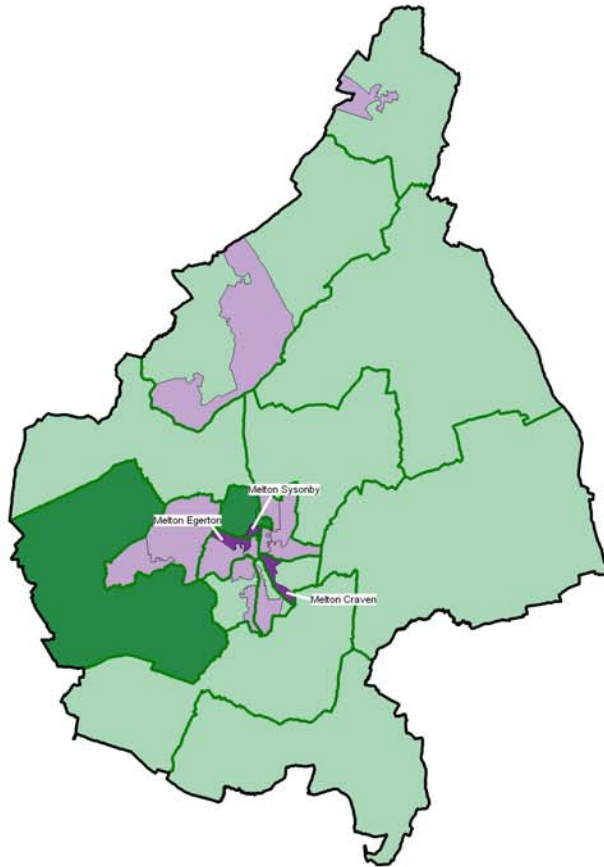


Table 7: Ten most deprived areas in Melton

SOA	Ward	Score	District Rank	County Rank	National Rank
E01025894	Melton Craven	0.11	1	28	11,307
E01025900	Melton Egerton	0.10	2	34	12,782
E01025905	Melton Sysonby	0.09	3	55	14,328
E01025907	Melton Warwick	0.08	4	78	16,062
E01025899	Melton Egerton	0.08	5	96	17,376
E01025884	Asfordby	0.07	6	140	20,286
E01025898	Melton Egerton	0.06	7	156	21,305
E01025903	Melton Newport	0.06	8	193	23,156
E01025886	Bottesford	0.05	9	224	24,309
E01025897	Melton Dorian	0.05	10	236	24856

MAP 6: EMPLOYMENT DEPRIVATION

Map 6
Employment Deprivation
 highlighting the 10% most deprived Super Output Areas in Melton



Levels of Employment Deprivation in Melton
 (Number of Super Output Areas)

- Top 10% - Most Deprived
- 10% to 50%
- 50% to 90%
- Bottom 10% - Least Deprived

10% Most Deprived
 Melton Super Output Areas

SOA Code	Ward
1.5894	Melton Craven
2.5900	Melton Egerton
3.5905	Melton Sysonby

- District Boundary
- Electoral Ward Boundaries
- Super Output Areas

Source: 2001 Census; Output Area Boundaries. Crown copyright 2003. Crown copyright material is reproduced with the permission of the Controller of HMSO.
 © Crown copyright 2005. All rights reserved. Use of this image is limited to viewing on-line and printing one copy.
 Leicestershire County Council: LA509/5271.
 Produced by R&I Team, Chief Executives
 Leicestershire County Council
 Source: Office for Deputy Prime Minister 2004

Each Super Output Area has an average of about 1,500 people

HEALTH DEPRIVATION AND DISABILITY

Indicators

This domain identifies areas with relatively high rates of people who die prematurely or whose quality of life is impaired by poor health or who are disabled. The indicators used to compile this domain include:

- Years of potential life lost
- Comparative Illness and Disability Ratio
- Measures of emergency admissions to hospital
- Measure of adults under 60 suffering from mood or anxiety disorders

Commentary

Levels of health deprivation in Melton are low with no Super Output Areas ranked within the 50% most deprived in England, and more than two thirds of the Super Output Areas ranked in the 20% least deprived in England.

Map 7 shows where the relative levels of health deprivation are higher.

Graph 7: Spread of National Ranking of all SOAs in Melton

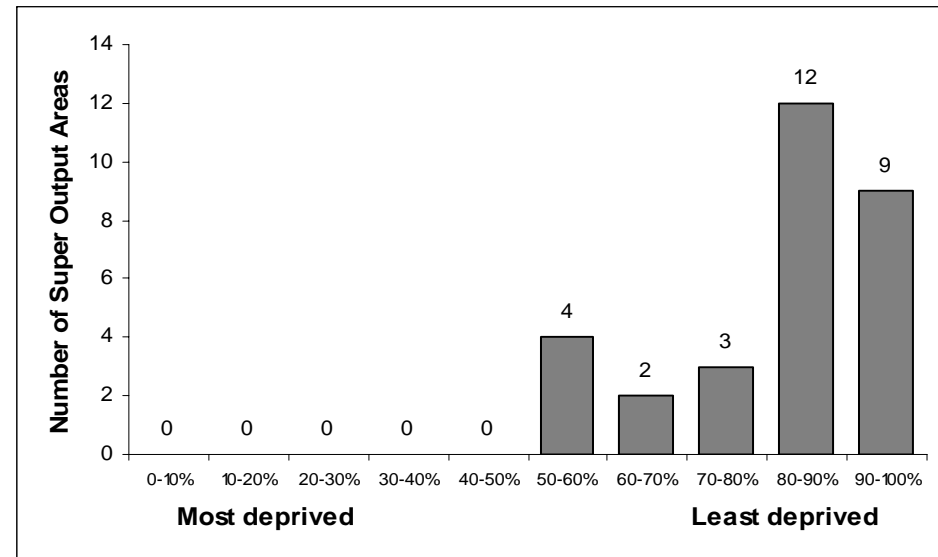
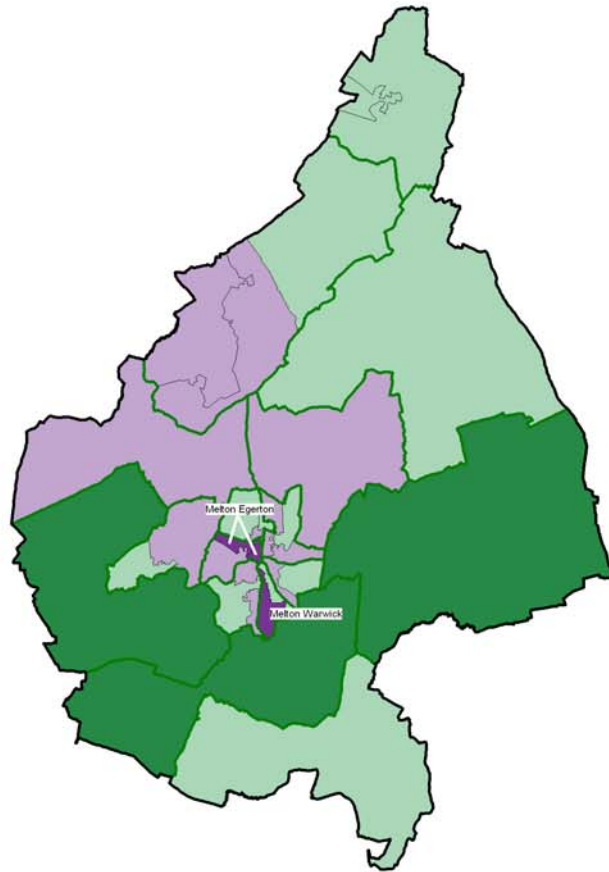


Table 8: Ten most deprived areas in Melton

SOA	Ward	Score	District Rank	County Rank	National Rank
E01025899	Melton Egerton	-0.12	1	59	17,730
E01025907	Melton Warwick	-0.19	2	77	18,654
E01025900	Melton Egerton	-0.21	3	84	18,934
E01025905	Melton Sysonby	-0.22	4	87	19,074
E01025894	Melton Craven	-0.30	5	103	20,202
E01025884	Asfordby	-0.42	6	128	21,821
E01025897	Melton Dorian	-0.57	7	167	23,634
E01025903	Melton Newport	-0.67	8	189	24,896
E01025909	Old Dalby	-0.78	9	224	26,008
E01025890	Long Clawson & Stathern	-0.81	10	232	26,272

MAP 7: HEALTH DEPRIVATION AND DISABILITY

Map 7
Health Deprivation and Disability
 highlighting the 10% most deprived Super Output Areas in Melton



Levels of Health & Disability Deprivation in Melton
 (Number of Super Output Areas)

- Top 10% - Most Deprived**
- 10% to 50%**
- 50% to 90%**
- Bottom 10% - Least Deprived**

10% Most Deprived
Melton Super Output Areas

SOA Code	Ward
1.5899	Melton Egerton
2.5907	Melton Warwick
3.5900	Melton Egerton

- District Boundary**
- Electoral Ward Boundaries**
- Super Output Areas**

Source: 2001 Census, Output Area Boundaries, Crown copyright 2003. Crown copyright material is reproduced with the permission of the Controller of HMSO.
 © Crown copyright 2005. All rights reserved.
 Use of this image is limited to viewing on-line and printing one copy.
 Leicestershire County Council, LA100219271.
 Produced by R&I Team, Chief Executives
 Leicestershire County Council
 Source: Office for Deputy Prime Minister 2004

Each Super Output Area has an average of about 1,500 people

EDUCATION, SKILLS AND TRAINING

Indicators

This domain captures the extent of deprivation in education, skills and training of people living in a local area. The indicators used are:

Children / young people

- Average points score of pupils at Key Stage 2
- Average points score of pupils at Key Stage 3
- Average points score of pupils at Key Stage 4
- Proportion of young people not staying on in school or further education above 16
- Secondary school absence rate
- Proportion of those aged under 21 not entering higher education

Skills

- Proportion of working age adults with no or low qualifications

Commentary

The borough experiences higher levels of deprivation in this domain than in most of the others. There are 13 Super Output Areas ranked within the 50% most deprived in England, one of which is within the 20% most deprived in England, part of Melton Egerton ward. This Super Output Area is also ranked as one of the ten most deprived areas in the county.

Map 8 shows where levels of deprivation are higher.

Graph 8: Spread of National Ranking of all SOAs in Melton

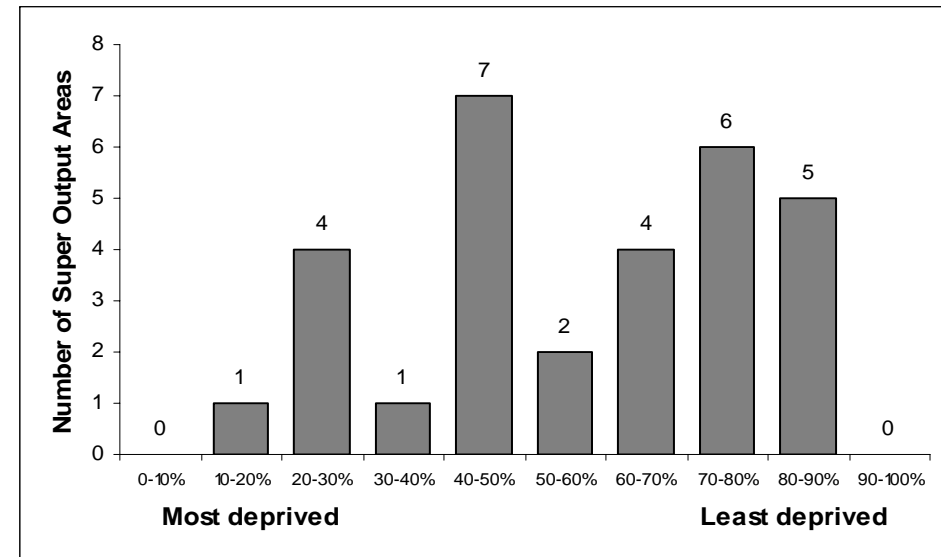
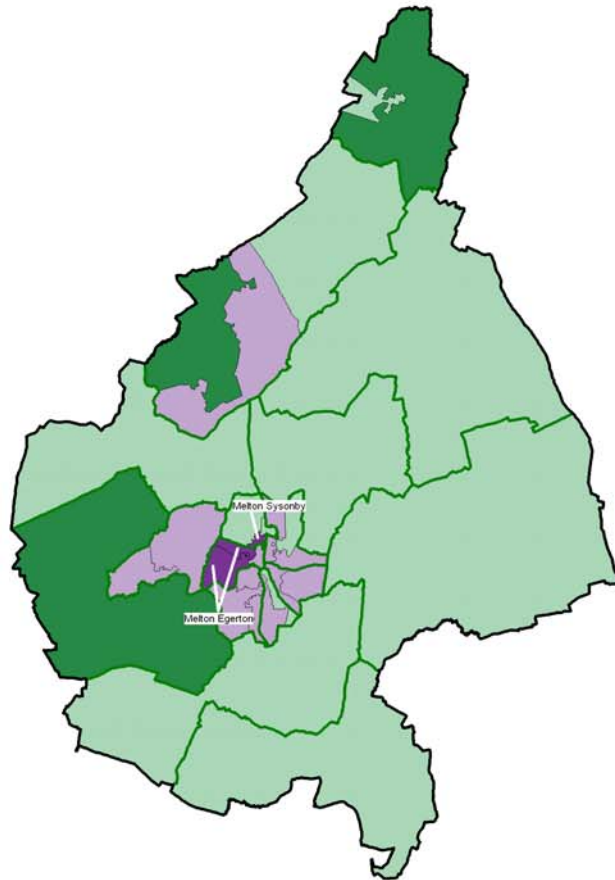


Table 9: Ten most deprived areas in Melton

SOA	Ward	Score	District Rank	County Rank	National Rank
E01025900	Melton Egerton	46.12	1	9	3,863
E01025905	Melton Sysonby	32.29	2	42	7,411
E01025898	Melton Egerton	30.12	3	58	8,229
E01025884	Asfordby	30.10	4	59	8,239
E01025897	Melton Dorian	26.88	5	69	9,604
E01025907	Melton Warwick	25.89	6	78	10,079
E01025895	Melton Dorian	19.76	7	128	13,527
E01025883	Asfordby	18.44	8	146	14,465
E01025893	Melton Craven	18.40	9	147	14,497
E01025896	Melton Dorian	18.08	10	150	14,717

MAP 8: EDUCATION, SKILLS AND TRAINING

Map 8
Education, Skills and Training Deprivation
 highlighting the 10% most deprived Super Output Areas in Melton



Levels of Education, Skills and Training Deprivation in Melton
 (Number of Super Output Areas)

- Top 10% - Most Deprived
- 10% to 50%
- 50% to 90%
- Bottom 10% - Least Deprived

10% Most Deprived
 Melton Super Output Areas

SOA Code	Ward
1.5900	Melton Egerton
2.5905	Melton Sysonby
3.5898	Melton Egerton

Each Super Output Area has an average of about 1,500 people

- District Boundary
- Electoral Ward Boudaries
- Super Output Areas

Source: 2001 Census, Output Area Boundaries, Crown copyright 2003. Crown copyright material is reproduced with the permission of the Controller of HMSO.
 © Crown copyright 2005. All rights reserved. Use of this image is limited to viewing online and printing one copy. Leicestershire County Council, LA1000/0271.
 Produced by R&I Team, Chief Executives, Leicestershire County Council

Source: Office for Deputy Prime Minister 2004

BARRIERS TO HOUSING AND SERVICES

Indicators

This domain measures the barriers faced by the local population relating to housing along with a measure of the distance needed to travel to key local services. The indicators used are:

Wider Barriers

- Household overcrowding
- Percentage of households with assistance under the homeless provisions of housing legislation
- Difficulty of access to owner occupation

Geographical Barriers

- Road distance to GP premises
- Road distance to a supermarket or convenience store
- Road distance to a primary school
- Road distance to a Post Office

Commentary

The borough experiences higher levels of deprivation in this domain than in any other with five Super Output Areas ranked in the 10% most deprived in England, and three of these ranked in the ten most deprived areas in the county.

The more deprived areas are shown on Map 9. They are all located in the more rural parts of the borough and reflect the more restricted access to key local services experienced by residents.

Graph 9: Spread of National Ranking of all SOAs in Melton

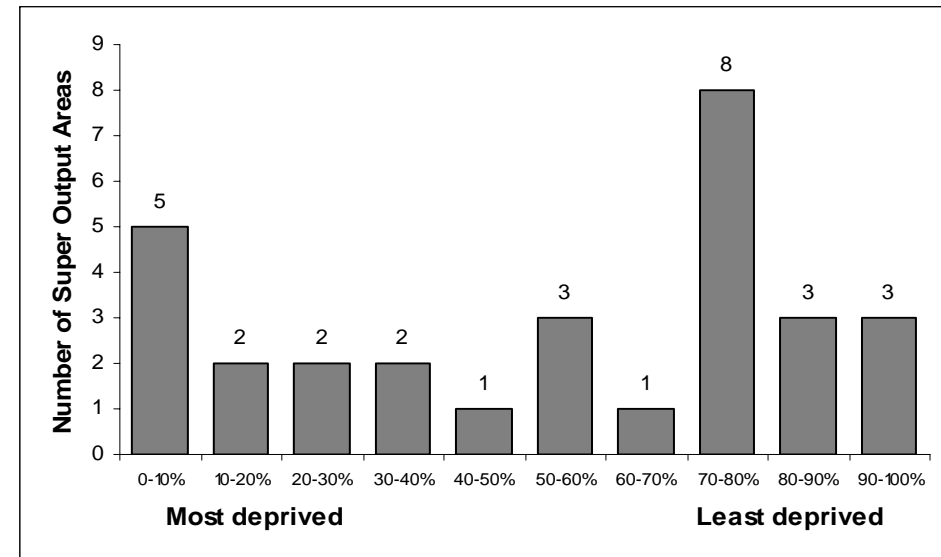
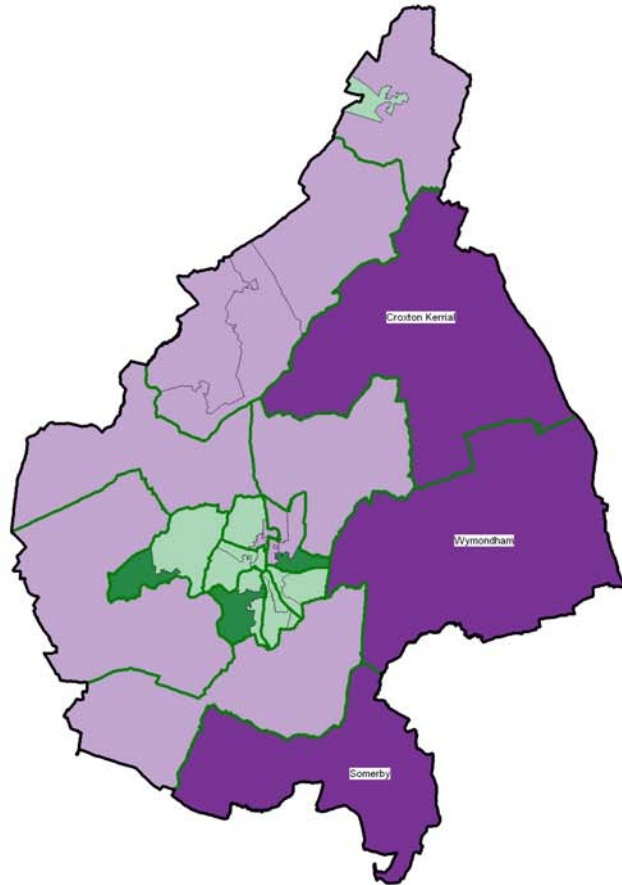


Table 10: Ten most deprived areas in Melton

SOA	Ward	Score	District Rank	County Rank	National Rank
E01025912	Wymondham	42.87	1	6	1,474
E01025910	Somerby	41.90	2	7	1,692
E01025887	Croxtan Kerrial	40.73	3	8	2,039
E01025888	Frisby-on-the-Wreake	38.08	4	13	2,874
E01025889	Gaddesby	37.65	5	14	3,042
E01025909	Old Dalby	33.60	6	17	4,912
E01025892	Long Clawson & Stathern	31.90	7	22	5,920
E01025885	Bottesford	30.77	8	25	6,636
E01025906	Melton Sysonby	29.16	9	29	7,746
E01025901	Melton Newport	24.46	10	66	11,831

MAP 9: BARRIERS TO HOUSING AND SERVICES

Map 9
Barriers to Housing and Services
 highlighting the 10% most deprived Super Output Areas in Melton



Levels of Housing and Services Deprivation in Melton
 (Number of Super Output Areas)

- Top 10% - Most Deprived
- 10% to 50%
- 50% to 90%
- Bottom 10% - Least Deprived

10% Most Deprived
 Melton Super Output Areas

SOA Code	Ward
1.5912	Wymondham
2.5910	Somerby
3.5887	Croxton Kerrial

Each Super Output Area has an average of about 1,500 people

- District Boundary
- Electoral Ward Boundaries
- Super Output Areas

Source: 2001 Census, Output Area Boundaries. Crown copyright 2003. Crown copyright material is reproduced with the permission of the Controller of HMSO.
 © Crown copyright 2005. All rights reserved.
 Use of this image is limited to viewing on-line and printing one copy.
 Leicestershire County Council LA100010271.
 Produced by R&I Team, Chief Executives
 Leicestershire County Council
 Source: Office for Deputy Prime Minister 2004

LIVING ENVIRONMENT

Indicators

This domain looks at both the indoor and outdoor living environment. The indicators used include:

Indoor Living Environment

- Social and private housing in poor condition
- Houses without central heating

Outdoor Living Environment

- Air quality
- Road traffic accidents involving injury to pedestrians and cyclists

Commentary

There is one Super Output Area in the borough which is ranked within the 20% most deprived in England and is also within the ten most deprived in the county – part of Melton Newport ward. There are a further five Super Output Areas which are within the 30% most deprived in England.

The more deprived areas are shown on Map 10.

Graph 10: Spread of National Ranking of all SOAs in Melton

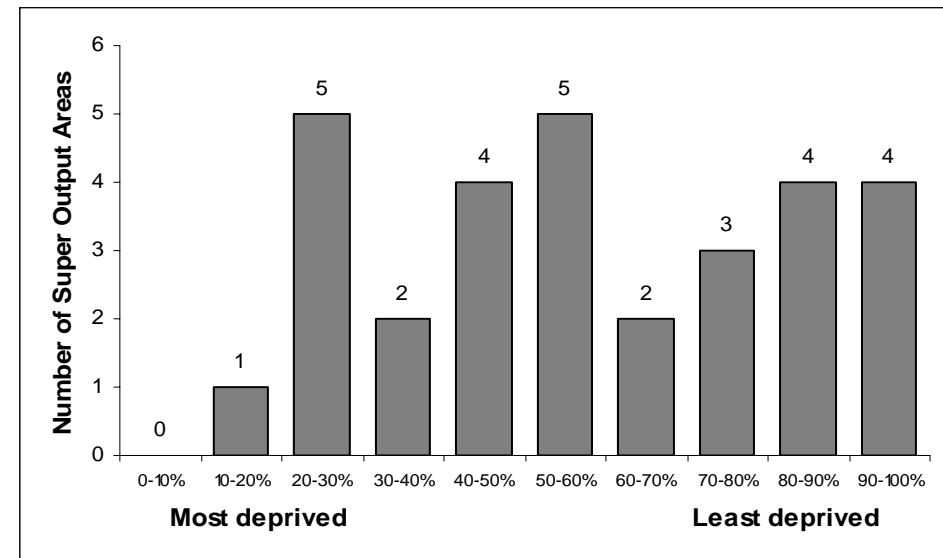
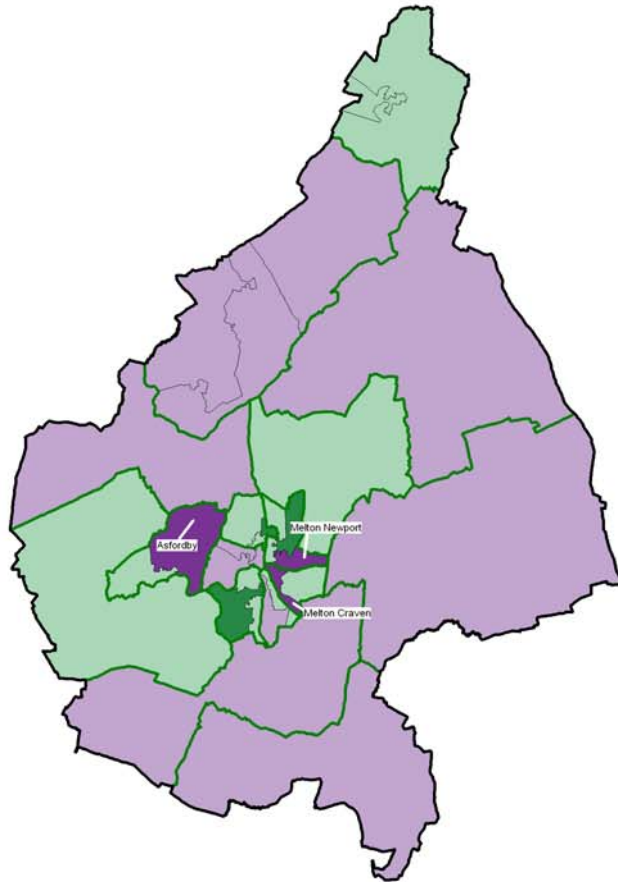


Table 11: Ten most deprived areas in Melton

SOA	Ward	Score	District Rank	County Rank	National Rank
E01025903	Melton Newport	36.40	1	10	6,168
E01025884	Asfordby	29.73	2	20	8,853
E01025894	Melton Craven	29.69	3	22	8,871
E01025912	Wyomdham	29.44	4	23	8,990
E01025887	Croxtan Kerrial	29.03	5	25	9,190
E01025907	Melton Warwick	28.11	6	30	9,589
E01025898	Melton Egerton	24.41	7	40	11,410
E01025900	Melton Egerton	23.40	8	47	11,919
E01025899	Melton Egerton	21.31	9	53	13,127
E01025890	Long Clawson & Stathern	20.94	10	54	13,339

MAP 10: LIVING ENVIRONMENT

Map 10
Living Environment Deprivation
 highlighting the 10% most deprived Super Output Areas in Melton



Levels of Living Environment Deprivation in Melton
 (Number of Super Output Areas)

- Top 10% - Most Deprived**
- 10% to 50%**
- 50% to 90%**
- Bottom 10% - Least Deprived**

**10% Most Deprived
 Melton Super Output Areas**

SOA Code	Ward
1.5903	Melton Newport
2.5884	Asfordby
3.5894	Melton Craven

Each Super Output Area has an average of about 1,500 people

- District Boundary**
- Electoral Ward Boundaries**
- Super Output Areas**

Source: 2001 Census, Output Area Boundaries. Crown copyright 2003. Crown copyright material is reproduced with the permission of the Controller of HMSO.
 © Crown copyright 2005. All rights reserved.
 Use of this image is limited to viewing on-line and printing one copy.
 Leicestershire County Council, LA10001927.
 Produced by R&I Team, Chief Executives
 Leicestershire County Council
 Source: Office for Deputy Prime Minister 2004

CRIME DOMAIN

Indicators

This domain measures the rate of recorded crime for four main crime types – burglary, theft, criminal damage and violence.

Commentary

Overall levels of crime deprivation are low in Melton with only six Super Output Areas ranked within the 50% most deprived in England. One of these – part of Melton Egerton ward - is within the 20% most deprived in England and is ranked 6th most deprived in the county. The other two Super Output Areas which make up Melton Egerton are also ranked within the 50% most deprived in England. Other areas which are within the 50% most deprived are parts of Melton Craven, Melton Warwick and Melton Dorian wards.

Map 11 shows the areas which are considered to be more deprived.

Graph 11: Spread of National Ranking of all SOAs in Melton

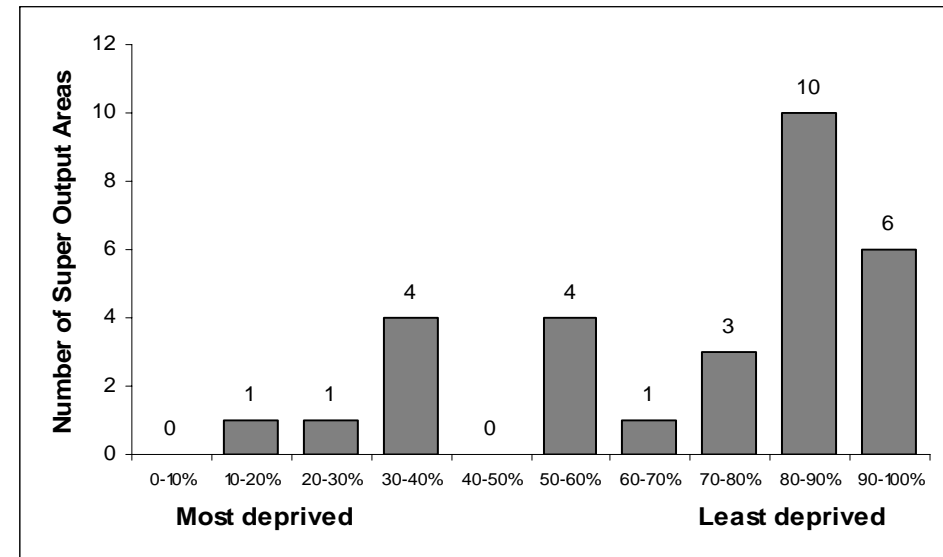
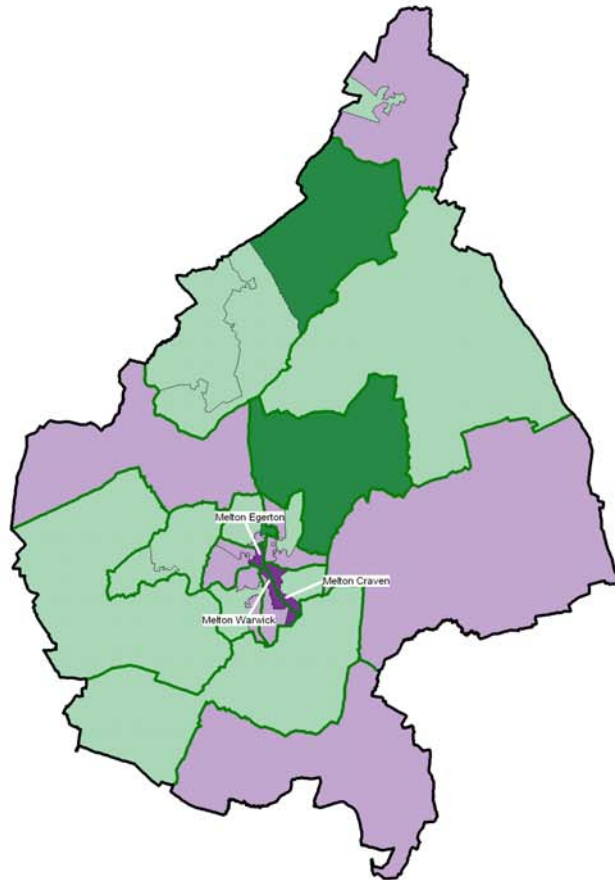


Table 12: Ten most deprived areas in Melton

SOA	Ward	Score	District Rank	County Rank	National Rank
E01025899	Melton Egerton	1.00	1	6	3,932
E01025894	Melton Craven	0.53	2	34	8,872
E01025908	Melton Warwick	0.43	3	38	10,260
E01025898	Melton Egerton	0.42	4	39	10,335
E01025900	Melton Egerton	0.35	5	45	11,267
E01025897	Melton Dorian	0.24	6	59	12,764
E01025905	Melton Sysonby	-0.09	7	113	17,409
E01025907	Melton Warwick	-0.18	8	134	18,646
E01025901	Melton Newport	-0.23	9	144	19,423
E01025903	Melton Newport	-0.24	10	147	19,461

MAP 11: CRIME DOMAIN

Map 11
Crime Deprivation
 highlighting the 10% most deprived Super Output Areas in Melton



Levels of Crime Deprivation in Melton
 (Number of Super Output Areas)

- Top 10% - Most Deprived
- 10% to 50%
- 50% to 90%
- Bottom 10% - Least Deprived

10% Most Deprived
 Melton Super Output Areas

SOA Code	Ward
1.5899	Melton Egerton
2.5894	Melton Craven
3.5908	Melton Warwick

- District Boundary
- Electoral Ward Boudaries
- Super Output Areas

Source: 2001 Census, Output Area Boundaries, Crown copyright 2003. Crown copyright material is reproduced with the permission of the Controller of HMSO.

© Crown copyright 2005. All rights reserved. Use of this image is limited to viewing on-line and printing one copy. Leicestershire County Council, LA100010271.

Produced by R&I Team, Chief Executives, Leicestershire County Council

Source: Office for Deputy Prime Minister 2004

Each Super Output Area has an average of about 1,500 people

APPENDIX 1

The table below shows each Super Output Area in the district, the ward in which it is located along with the ranking within England (where a ranking of 1 = most deprived in England, 32,482 = least deprived in England). For ease of use, any area ranked within the 20% most deprived in England (ranked between 1 and 6,496) has been shaded.

SOA	Ward	IMD	Income	Employment				Living			IDAC	IDAOP
				ment	Health	Education	Barriers	Env	Crime			
E01025883	Asfordby	27,757	23,000	26,368	27,675	14,465	31,995	22,337	27,114	21,107	22,693	
E01025884	Asfordby	18,475	16,749	20,286	21,821	8,239	23,683	8,853	29,777	17,588	13,237	
E01025885	Bottesford	29,375	31,776	28,783	30,256	27,496	6,636	29,262	24,116	31,383	31,494	
E01025886	Bottesford	28,868	22,306	24,309	27,151	23,627	26,085	26,042	29,263	26,326	16,066	
E01025887	Croxton Kerrial	21,068	23,393	27,894	28,029	22,673	2,039	9,190	29,768	22,472	22,801	
E01025888	Frisby-on-the-Wreake	26,976	30,736	30,464	31,509	28,083	2,874	18,580	27,948	29,976	30,344	
E01025889	Gaddesby	25,726	26,649	29,772	31,252	27,144	3,042	17,388	28,061	25,259	26,235	
E01025890	Long Clawson & Stathern	23,958	19,836	26,263	26,272	18,163	14,365	13,339	26,925	17,220	24,968	
E01025891	Long Clawson & Stathern	30,308	29,526	29,717	26,896	28,131	18,567	17,188	27,982	30,491	22,857	
E01025892	Long Clawson & Stathern	27,140	27,474	28,971	28,970	27,324	5,920	15,627	31,392	26,547	26,186	
E01025893	Melton Craven	30,103	27,965	29,491	29,565	14,497	25,827	29,055	28,627	27,191	26,140	
E01025894	Melton Craven	13,892	11,523	11,307	20,202	16,075	27,120	8,871	8,872	14,674	9,393	
E01025895	Melton Dorian	26,196	21,746	26,073	26,440	13,527	24,970	26,289	22,982	16,118	28,658	
E01025896	Melton Dorian	30,741	28,856	29,471	30,250	14,717	30,469	31,430	26,997	26,074	28,453	
E01025897	Melton Dorian	19,964	13,771	24,856	23,634	9,604	26,875	24,866	12,764	11,566	14,342	
E01025898	Melton Egerton	17,265	16,297	21,305	26,542	8,229	21,198	11,410	10,335	15,676	21,624	
E01025899	Melton Egerton	14,938	14,073	17,376	17,730	14,879	23,162	13,127	3,932	14,209	16,083	
E01025900	Melton Egerton	10,819	8,300	12,782	18,934	3,863	23,528	11,919	11,267	7,449	20,602	
E01025901	Melton Newport	25,385	24,055	25,125	26,338	17,329	11,831	29,285	19,423	24,577	26,290	
E01025902	Melton Newport	30,179	30,222	25,240	28,236	25,816	12,621	32,364	30,336	30,230	31,100	
E01025903	Melton Newport	21,579	19,134	23,156	24,896	16,033	32,325	6,168	19,461	17,150	18,378	
E01025904	Melton Sysonby	31,201	30,359	29,995	29,481	19,559	24,502	30,299	26,311	28,394	31,299	
E01025905	Melton Sysonby	13,607	8,196	14,328	19,074	7,411	17,391	24,900	17,409	5,776	15,067	
E01025906	Melton Sysonby	29,818	28,636	31,978	28,572	23,438	7,746	32,242	30,750	28,659	21,393	
E01025907	Melton Warwick	14,668	10,368	16,062	18,654	10,079	24,060	9,589	18,646	10,665	9,984	
E01025908	Melton Warwick	29,225	29,993	27,732	29,932	25,716	27,236	22,230	10,260	25,927	32,151	
E01025909	Old Dalby	24,664	26,986	27,717	26,008	20,852	4,912	17,901	26,264	28,552	21,219	

Continued on next page

APPENDIX 1

SOA	Ward	IMD	Income	Employment	Health	Education	Barriers	Living Env	Crime	IDAC	IDAOP
E01025910	Somerby	23,017	27,266	29,682	31,094	23,942	1,692	14,621	22,762	25,719	25,505
E01025911	Waltham-on-the-Wolds	28,657	23,507	29,490	27,005	25,127	16,518	17,994	31,247	28,722	14,644
E01025912	Wymondham	19,081	19,719	28,648	31,354	19,647	1,474	8,990	25,925	17,261	18,390

If you require information contained in this publication in another version eg large print, Braille, tape or an alternative language please call 0116 265 8262 or email sgeddes@leics.gov.uk
