

Office of the Deputy Prime Minister  
**Indices of Deprivation 2004**  
**Key Findings in North West Leicestershire**

January 2005



Report Produced by Research & Information Team  
Chief Executives Department  
Leicestershire County Council



## CONTENTS

### Contents

	<b>Page</b>
Introduction	2
District Summary	3
Geography	4
Local Data	6
Index of Multiple Deprivation	8
Income Deprivation	10
Income Deprivation Affecting Children	12
Income Deprivation Affecting Older People	14
Employment Deprivation	16
Health Deprivation and Disability	18
Education, Skills and Training Deprivation	20
Barriers to Housing and Services	22
Living Environment	24
Crime Deprivation	26
Appendix 1	28

## INTRODUCTION

### Introduction

The Indices of Deprivation 2004 are produced by the Office of the Deputy Prime Minister (ODPM). They are an attempt to measure deprivation in a consistent way for small areas across England. They were first developed in the mid 1990's using data from the 1991 Census. Since then the Indices have been revised several times using updated data and new indicators to reflect change. They have been widely used to target regeneration resources through the regional allocation of the SRB Challenge Fund.

In recent years with the release of the Indices of Deprivation (ID2000) in July 2000, use of the Indices has become more widespread. Both central and local government places a lot of value on the Indices and the Audit Commission uses it as one measure for the Quality of Life Indicators.

### Indices of Deprivation 2004

The Indices of Deprivation 2004 (ID2004) were released in May 2004. The ID2004 are based on the approach, structure and methodology that was used to create the previous Indices of Deprivation 2000. The ID2004 updates the ID2000 in two key ways:

- more up-to-date data has been used (mostly 2001 data), and
- new measures have been incorporated as new and improved data sources have become available.

These changes however mean that the two indices cannot be directly compared. In addition many ward boundaries have changed since the release of the 2000 data meaning that straightforward comparisons cannot be made. Therefore change over time cannot be identified.

### This Report

This report presents the results of the Indices of Deprivation 2004 in North West Leicestershire District.

It considers the summary measures used to score and rank the District in relation to other Local Authority Districts in England.

It also includes details of different aspects of deprivation affecting smaller areas within the District. A series of maps are included and illustrate where the relatively higher levels of deprivation are located.

### Leicestershire County Report

A report considering the Indices of Deprivation 2004 in more detail across all districts in Leicestershire has also been produced. It is available to download at [www.leics.gov.uk/statistics](http://www.leics.gov.uk/statistics), or by using the contact details below.

### Further Information

Further information is available from [www.odpm.gov.uk](http://www.odpm.gov.uk)

If you require further guidance, please contact:

Sarah Geddes  
Research & Information Team  
Chief Executives Department  
Leicestershire County Council

E: [sgeddes@leics.gov.uk](mailto:sgeddes@leics.gov.uk)

T: 0116 265 8262

## SUMMARY

### North West Leicestershire District Summary

ODPM uses six summary measures to rank district authorities in England. The most commonly used measure is the Rank of Average Rank which measures the average levels of deprivation across the District. This shows that North West Leicestershire District is ranked 195<sup>th</sup> out of the 354 district authorities in England, where 1=most deprived and 354=least deprived. Table 1 below shows that North West Leicestershire is the most deprived district in Leicestershire.

**Table 1: Comparison with other districts in Leicestershire**

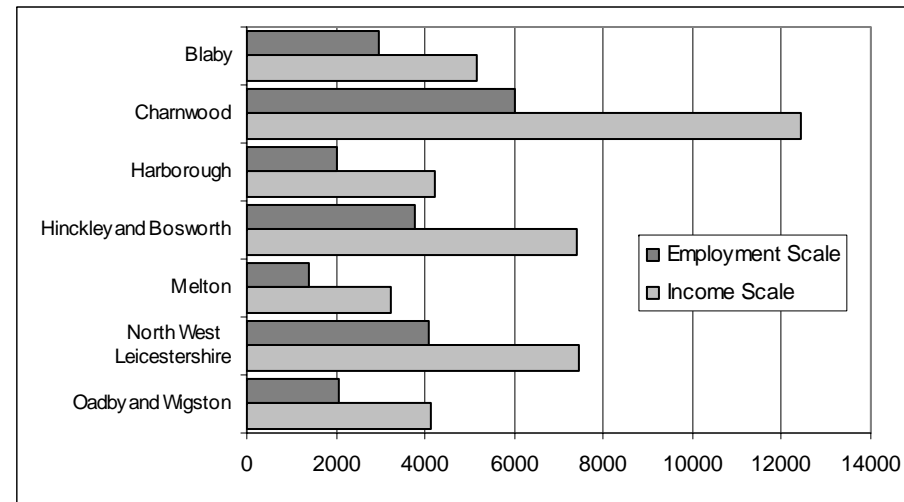
District	Rank of average rank
<b>North West Leicestershire</b>	<b>195</b>
Charnwood	262
Hinckley and Bosworth	275
Melton	293
Oadby and Wigston	304
Blaby	316
Harborough	336

Other measures which are used to rank district authorities include the Rank of Local Concentration. This measures the severity of multiple deprivation in each authority, measuring 'hot spots' of deprivation. North West Leicestershire is ranked 195<sup>th</sup> in England showing that the District experiences relatively low levels of deprivation.

The districts are also ranked on an Income and Employment Scale. This measures the number of people who are considered to be either income or employment deprived in each district.

The graph below shows that 7,438 people are income deprived and 4,079 people are employment deprived in North West Leicestershire.

**Graph 1: Number of people who are income or employment deprived by district**



The examination of Super Output Area data in each domain highlights the locations where deprivation is concentrated in the District.

## GEOGRAPHY

### Indices of Deprivation: Geography

For the first time, the Indices of Deprivation 2004 have been released at Super Output Area (SOA) lower level – where previous Indices were released at ward level.

Super Output Areas are a new national geography created by the Office for National Statistics. They are created by combining a number of Output Areas which were created for the 2001 Census.

Super Output Areas are small areas of broadly consistent population size across the country, each containing approximately 1,500 people.

The use of Super Output Areas (lower level) as a basis for the Indices enables smaller, sub-ward areas of deprivation to be identified. Such areas may previously have been hidden / masked by the use of ward level data.

North West Leicestershire District contains 57 Super Output Areas.

**Table 2: Number of SOAs by area**

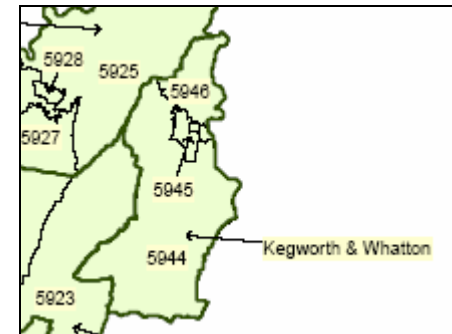
	Number of SOAs
England	32,482
Leicestershire	396
North West Leicestershire District	57

In all cases, a ranking of 1 signifies the most deprived area. In respect of the national ranking which is given in each of the following tables, a ranking between 1 and 3,248 denotes that the area is ranked within the 10% most deprived in England, and a ranking between 1 and 6,496 denotes that the area is ranked within the 20% most deprived in England.

Map 1 shows the location of each of the Super Output Areas in North West Leicestershire District. Each Super Output Area is identified by a nine digit code, eg. E0102**5925**. For ease of use, Map 1 lists only the last four digits.

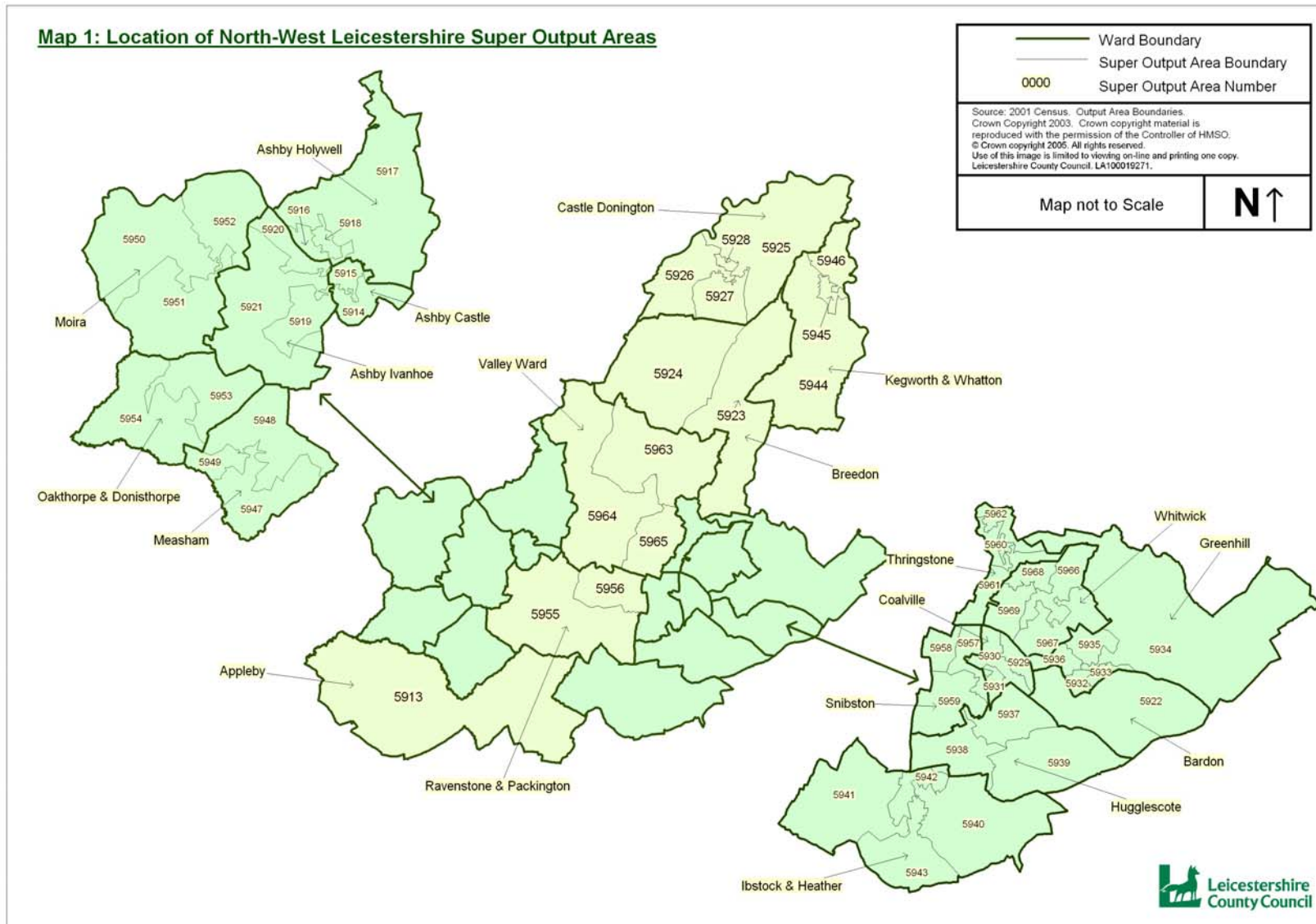
The picture below shows how a number of Super Output Areas (normally between two and five) are located within ward boundaries, so for example Kegworth and Whatton ward contains three SOAs – 5944, 5945 and 5946.

**Picture 1: Extract of Map 1 showing SOAs within ward boundaries**



For information, this report also contains the ward in which each SOA is located. However, where a ward name is given, users should be aware that it relates only to part of the ward, and not necessarily the entire ward.

**MAP 1: LOCATION OF SOAS**



## LOCAL DATA

## LOCAL DATA

### Local data

The Index of Multiple Deprivation 2004 (IMD2004) combines indicators across seven domains into a single deprivation score and rank for each Super Output Area. The domains are shown below:

- Income Deprivation
- Employment Deprivation
- Health Deprivation and Disability
- Education, Skills and Training Deprivation
- Barriers to Housing and Services
- Living Environment Deprivation
- Crime

There are also two supplementary domains which measure income deprivation affecting children (IDAC) and income deprivation affecting older people (IDAOP).

These domains are given the following weighting when calculating the overall Index of Multiple Deprivation:

	Weighting
Income Deprivation	22.5%
Employment Deprivation	22.5%
Health Deprivation and Disability	13.5%
Education, Skills and Training Deprivation	13.5%
Barriers to Housing and Services	9.3%
Living Environment Deprivation	9.3%
Crime	9.3%

The following sections consider the relative levels of deprivation experienced in each domain in North West Leicestershire.

Information on the indicators used to compile each domain is listed along with a table showing the ten most deprived SOAs in the District in each domain.

For comparison, some tables also include the ranking in Leicestershire (where 1=most deprived, 396=least deprived) and in England (where 1=most deprived, 32,482=least deprived).

Each section also includes a graph which shows the number of Super Output Areas in each domain and how they are ranked within England. This gives a visual representation of the spread of relative deprivation in each domain in the District, showing how many areas are in the 10% most deprived and 10% least deprived in England.

This information is accompanied by Maps 2 to 11 which show the location of the most deprived areas in each domain in the District. The 10% most deprived and 10% least deprived areas in North West Leicestershire are highlighted on the maps.

A comprehensive list of national ranks for each Super Output Area in each domain is included in appendix 1.

## INDEX OF MULTIPLE DEPRIVATION

### Indicators

The Index of Multiple Deprivation combines the indicators across the seven domains (listed below) into a single deprivation score and rank for each Super Output Area

- Income
- Employment
- Health & Disability
- Education & Skills
- Barriers to Housing & Services
- Living Environment
- Crime

### Commentary

The Index of Multiple Deprivation considers all aspects of deprivation experienced by particular areas. Overall levels of deprivation in North West Leicestershire are low, with no Super Output Areas ranked within the 10% most deprived in England and the majority of Super Output Areas ranked in the 50% least deprived in England.

However some of the highest levels of deprivation in the county are found in parts of North West Leicestershire. There are two Super Output Areas ranked in the 20% most deprived in England, part of Greenhill ward. These areas are also ranked as 2<sup>nd</sup> and 3<sup>rd</sup> most deprived Super Output Areas in the county respectively. Other areas which are ranked relatively highly include parts of Measham, Coalville and Moira wards.

The areas experiencing highest levels of deprivation are shown on Map 2.

Graph 2: Spread of National Ranking of all SOAs in NW Leicestershire

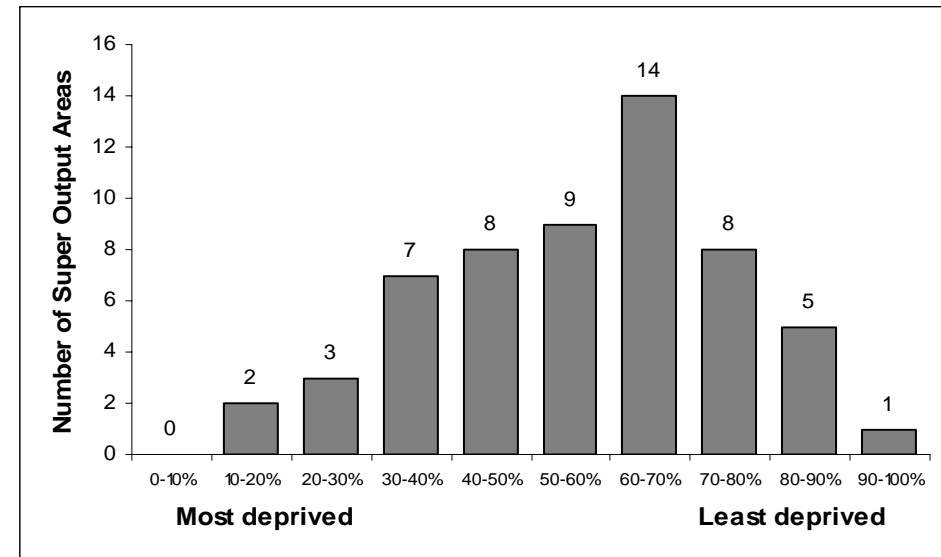
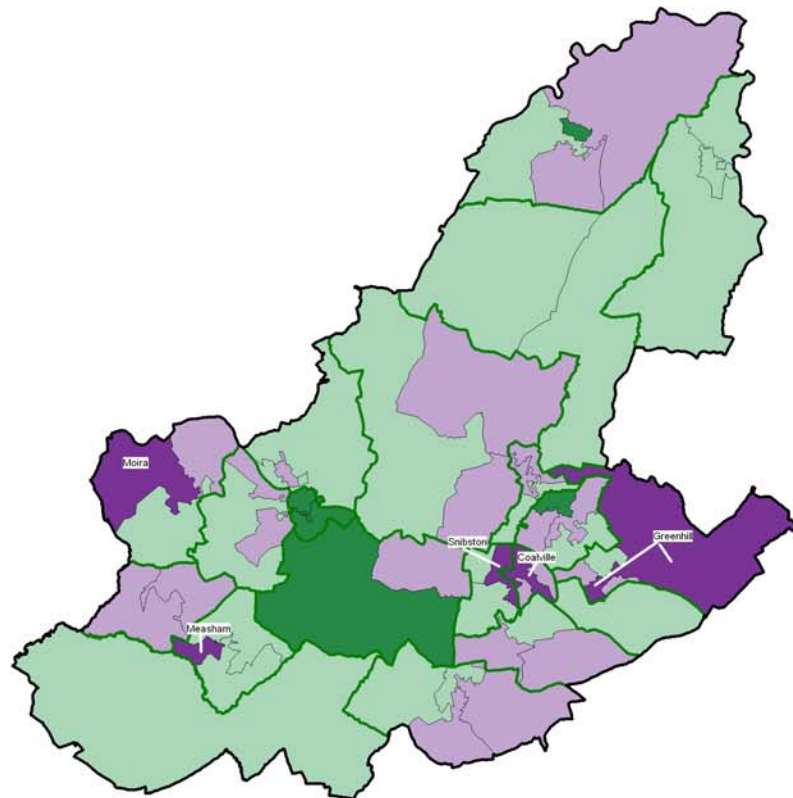


Table 3: Ten most deprived areas in North West Leicestershire

SOA	Ward	Score	District Rank	County Rank	National Rank
E01025934	Greenhill	43.69	1	2	3,594
E01025932	Greenhill	41.96	2	3	4,037
E01025949	Measham	30.32	3	7	8,011
E01025930	Coalville	28.76	4	10	8,683
E01025950	Moira	27.66	5	13	9,196
E01025957	Snibston	26.46	6	15	9,820
E01025962	Thringstone	23.88	7	20	11,177
E01025931	Coalville	23.64	8	22	11,319
E01025966	Whitwick	23.63	9	23	11,325
E01025927	Castle Donington	22.15	10	31	12,290

**MAP 2: INDEX OF MULTIPLE DEPRIVATION**

**Map 2**  
**Index of Multiple Deprivation**  
 highlighting the 10% most deprived Super Output Areas in North West Leicestershire



**Levels of Multiple Deprivation in North West Leicestershire**  
 (Number of Super Output Areas)

- Top 10% - Most Deprived**
- 10% to 50%**
- 50% to 90%**
- Bottom 10% - Least Deprived**

**10% Most Deprived**  
 North West Leicestershire Super Output Areas

SOA Code	Ward
1.5934	Greenhill
2.5932	Greenhill
3.5949	Measham
4.5930	Coalville
5.5950	Moira
6.5957	Snibston

- District Boundary**
- Electoral Ward Boundaries**
- Super Output Areas**

Source: 2001 Census, Output Area Boundaries. Crown copyright 2003. Crown copyright material is reproduced with the permission of the Controller of HMSO.  
 © Crown copyright 2005. All rights reserved. Use of this image is limited to viewing, on-line and printing one copy. Leicestershire County Council, LA100019271.  
 Produced by R&I Team, Chief Executives, Leicestershire County Council  
 Source: Office for Deputy Prime Minister 2004

Each Super Output Area has an average of about 1,500 people

## INCOME DEPRIVATION

### Indicators

The income deprivation domain measures the proportion of the population living below 60% of median income. A number of indicators are used to compile this domain. These include:

- Adults and children in Income Support households
- Adults and children in Income Based Job Seekers Allowance households
- Adults and children in Working Family Tax Credit households
- Adults and children in Disabled Persons Tax Credit households
- Supported asylum seekers in receipt of subsistence only and accommodation support

### Commentary

In North West Leicestershire there are **7,438 people** who are considered to be income deprived. Graph 3 shows the spread of rankings for all Super Output Areas in the District. It shows that the majority of the Super Output Areas in the District are ranked in the 50% least deprived in England. However, one area is ranked within the 10% most deprived in England (part of Greenhill ward), with another part of Greenhill ward ranked within the 20% most deprived.

In this domain, the score indicates the proportion of the total population who are considered to be income deprived. Table 4 lists the number of people in the most deprived areas who are income deprived. It shows that over a third of people who are income deprived in North West Leicestershire live in the ten most deprived SOAs.

Map 3 shows the most deprived areas in the District.

Graph 3: Spread of National Ranking of all SOAs in NW Leicestershire

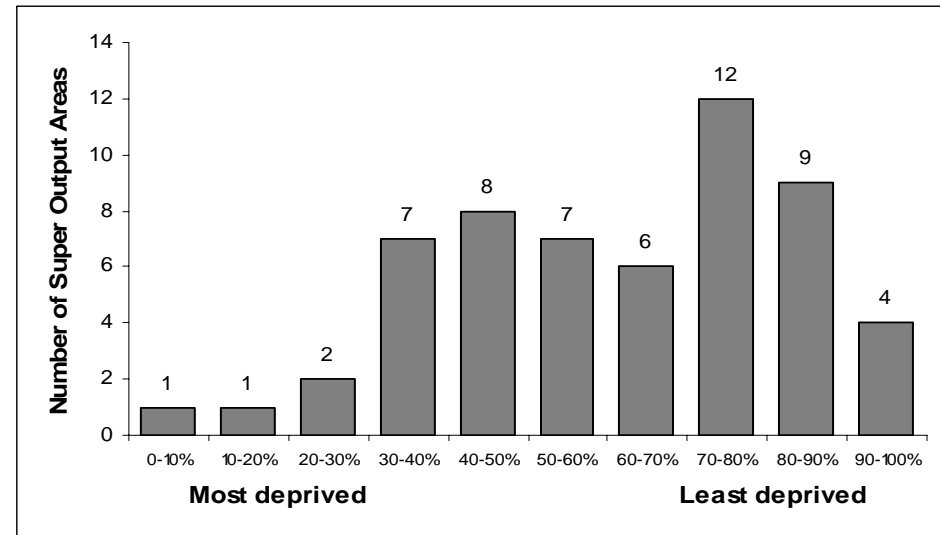
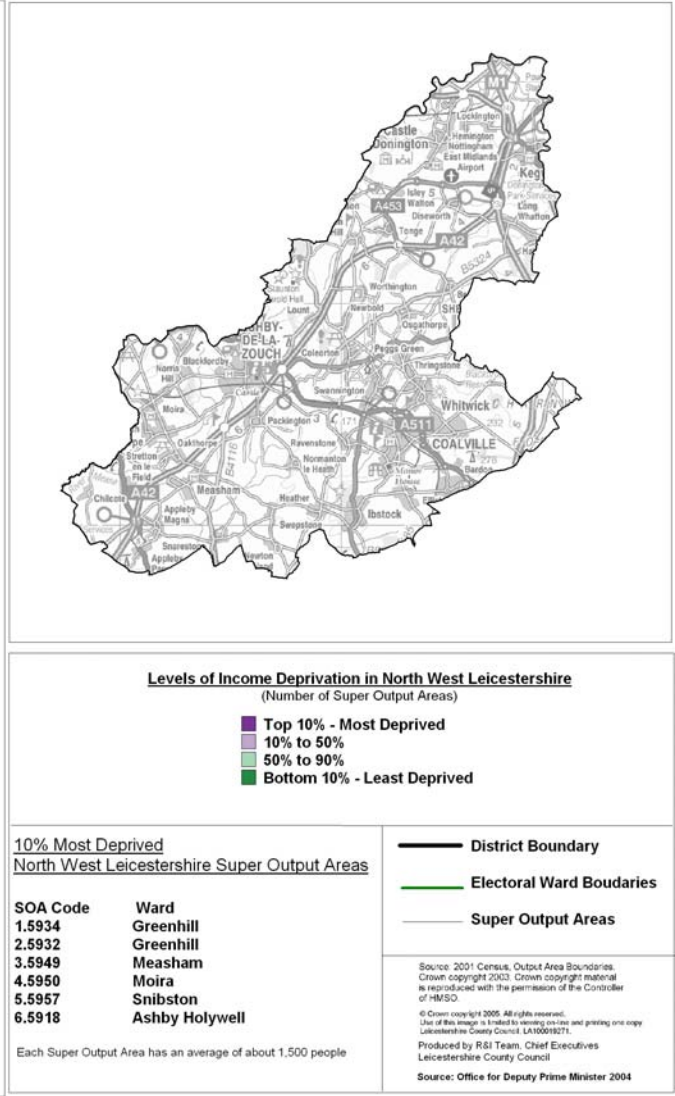
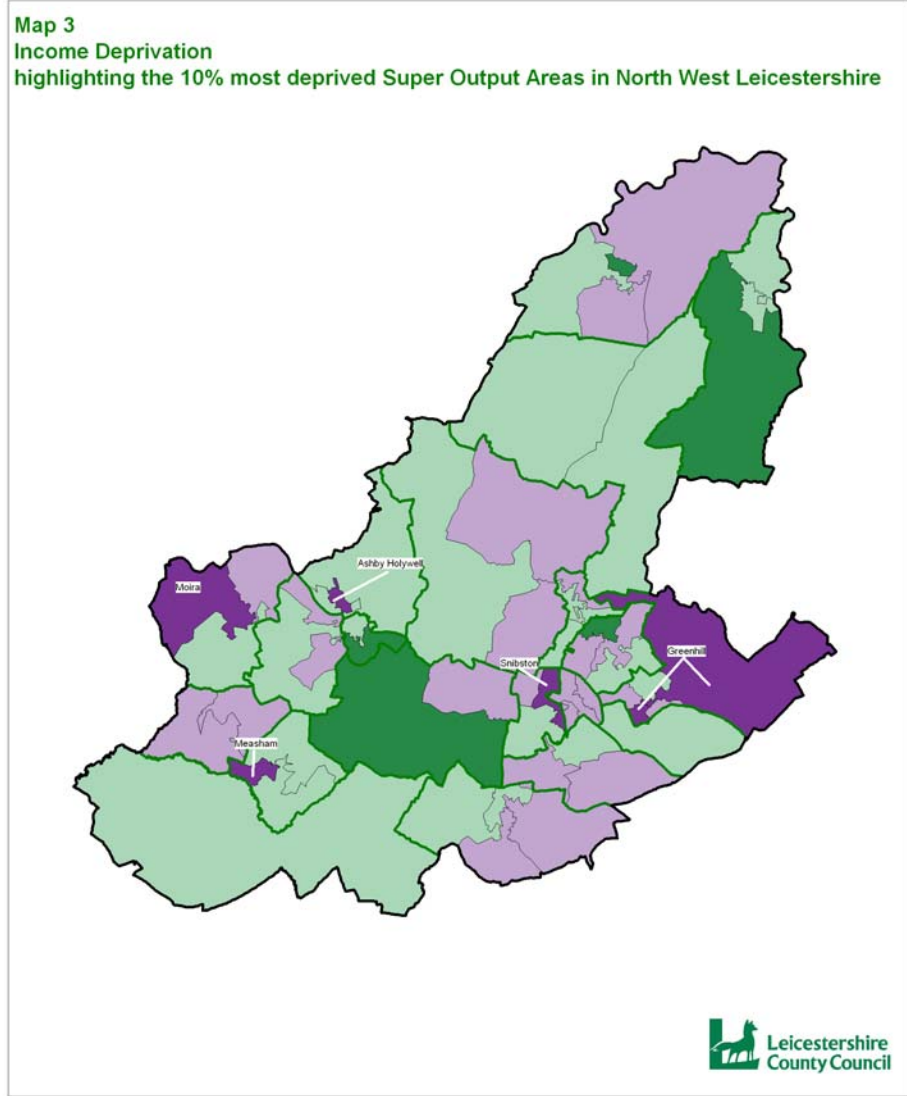


Table 4: Ten most deprived areas in North West Leicestershire

SOA	Ward	Score	Total pop	Number income deprived	National Rank
E01025934	Greenhill	0.33	1,538	508	2,633
E01025932	Greenhill	0.28	1,427	400	4,105
E01025949	Measham	0.19	1,581	300	8,329
E01025950	Moira	0.19	1,551	295	8,597
E01025957	Snibston	0.16	1,482	237	10,025
E01025918	Ashby Holywell	0.16	1,454	233	10,300
E01025966	Whitwick	0.14	1,499	210	11,853
E01025920	Ashby Ivanhoe	0.14	1,486	208	11,925
E01025962	Thringstone	0.13	1,482	193	12,392
E01025930	Coalville	0.13	1,488	193	12,801

**MAP 3: INCOME DEPRIVATION**



## INCOME DEPRIVATION AFFECTING CHILDREN

### Indicators

This is a supplementary indicator that measures the proportion of children under 16 in an area who live in income deprived households.

### Commentary

Overall, there are 2,155 children in North West Leicestershire living in households which are considered to be income deprived. This accounts for 12.8% of the children in the District aged under 16 years.

Of the 7,438 people who are income deprived in North West Leicestershire, 37.3% are aged 16 or under. This is the highest proportion of all the districts in Leicestershire.

Map 4 shows the locations of the Super Output Areas that are ranked as most deprived in the District. There is one Super Output Area, part of Greenhill ward which is ranked in the 10% most deprived in England. Over half of the children in this area live in income deprived households.

The wards with the highest numbers of children living in households which are income deprived are Greenhill (468 children), Snibston (163 children) and Moira (155 children).

Graph 4: Spread of National Ranking of all SOAs in NW Leicestershire

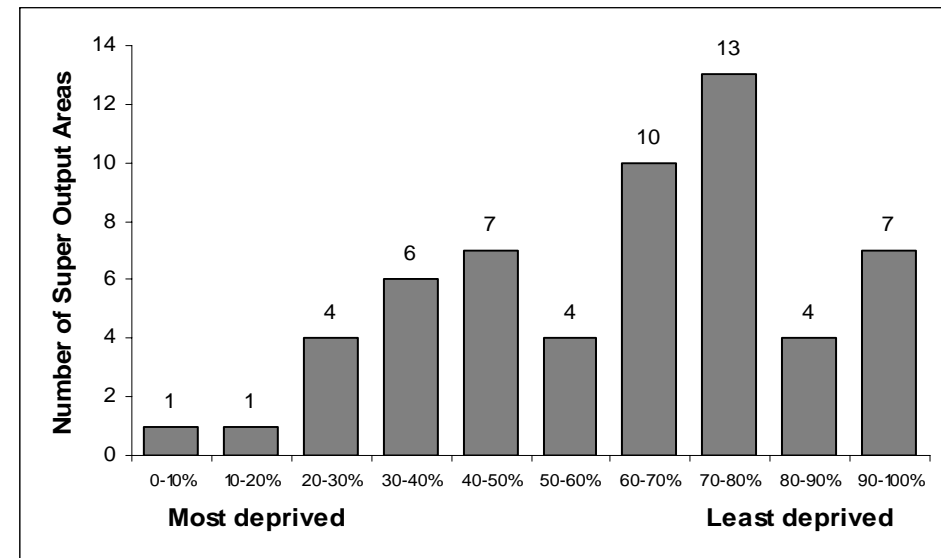
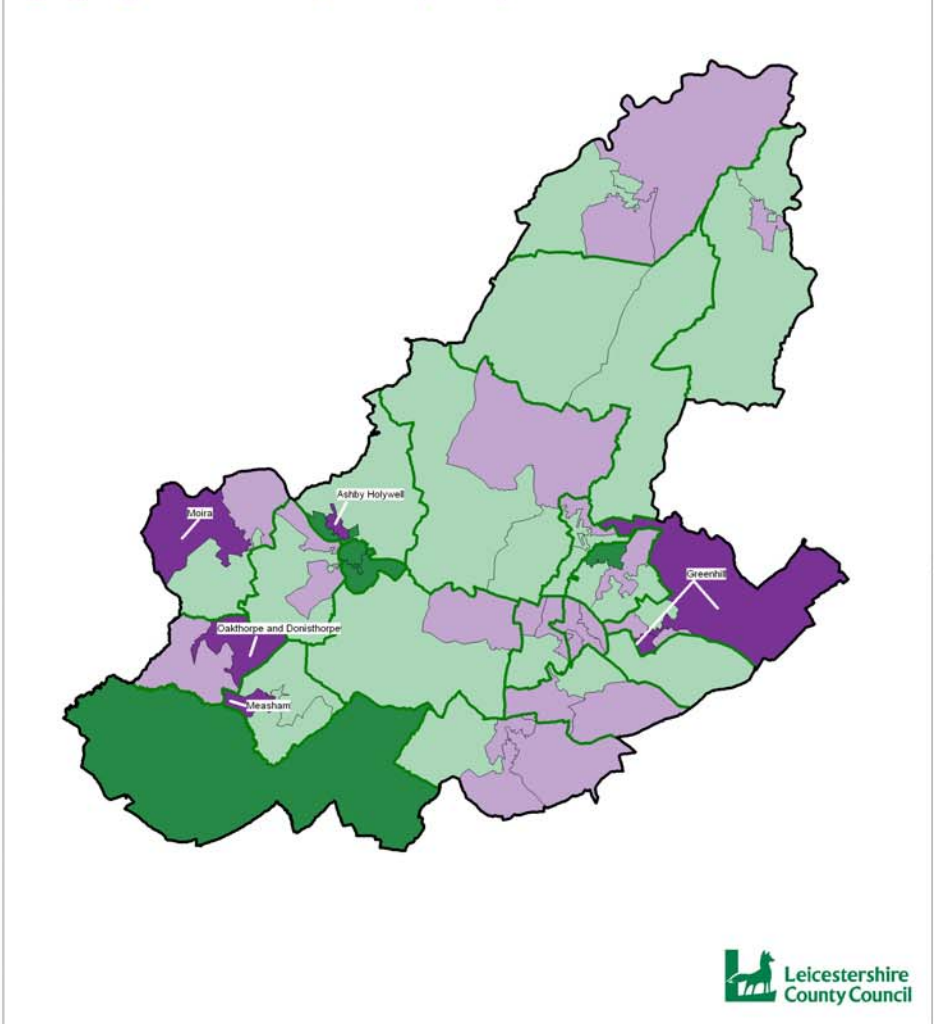


Table 5: Ten most deprived areas in North West Leicestershire

SOA	Ward	Score	Total <16yrs	Number deprived	National Rank
E01025934	Greenhill	0.54	352	192	1,564
E01025932	Greenhill	0.44	359	159	3,533
E01025950	Moira	0.30	316	96	7,825
E01025953	Oakthorpe & Donisthorpe	0.29	219	64	8,250
E01025949	Measham	0.27	373	102	9,049
E01025918	Ashby Holywell	0.26	310	82	9,722
E01025966	Whitwick	0.26	269	63	9,750
E01025920	Ashby Ivanhoe	0.23	350	80	10,735
E01025957	Snibston	0.23	296	65	10,980
E01025927	Castle Donington	0.22	351	74	11,689

**MAP 4: INCOME DEPRIVATION AFFECTING CHILDREN**

**Map 4**  
**Income Deprivation Affecting Children**  
 highlighting the 10% most deprived Super Output Areas in North West Leicestershire



**Levels of Income Deprivation Affecting Children in North West Leicestershire**  
 (Number of Super Output Areas)

- Top 10% - Most Deprived**
- 10% to 50%**
- 50% to 90%**
- Bottom 10% - Least Deprived**

**10% Most Deprived**  
 North West Leicestershire Super Output Areas

SOA Code	Ward
1.5934	Greenhill
2.5932	Greenhill
3.5950	Moira
4.5953	Oakthorpe & Donisthorpe
5.5949	Measham
6.5918	Ashby Holywell

Each Super Output Area has an average of about 1,500 people

- District Boundary**
- Electoral Ward Boundaries**
- Super Output Areas**

Source: 2001 Census, Output Area Boundaries.  
 Crown copyright 2003. Crown copyright material is reproduced with the permission of the Controller of HMSO.  
 © Crown copyright 2005. All rights reserved.  
 Use of this image is limited by viewing on-line and printing one copy.  
 Leicestershire County Council, LA10019271.  
 Produced by R&I Team, Chief Executives  
 Leicestershire County Council  
 Source: Office for Deputy Prime Minister 2004

## INCOME DEPRIVATION AFFECTING OLDER PEOPLE

### Indicators

This is a supplementary indicator that measures the proportion of people aged over 60 years in an area who live in income deprived households.

### Commentary

Levels of deprivation are relatively low in this domain in North West Leicestershire with no Super Output Areas ranked in the 20% most deprived in England.

The most deprived Super Output Areas in the district are located in parts of Ravenstone and Packington ward and Coalville wards.

In North West Leicestershire there are 1,837 people aged over 60 living in income deprived households. This accounts for 11.2% of the people aged over 60 in the District.

It also shows that of the 7,438 people who are income deprived in North West Leicestershire, 24.7% are aged over 60.

Map 5 shows the location of the areas which are ranked as most deprived in the District.

Graph 5: Spread of National Ranking of all SOAs in NW Leicestershire

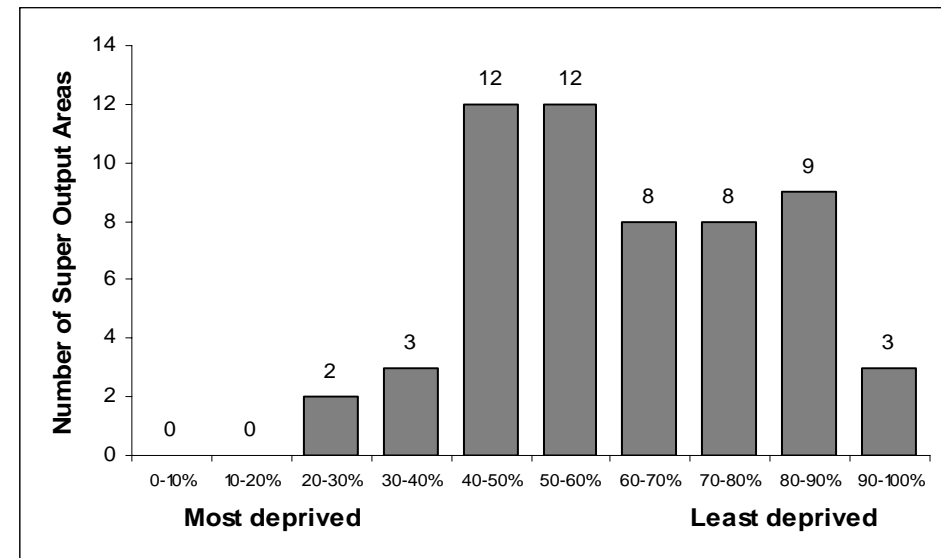
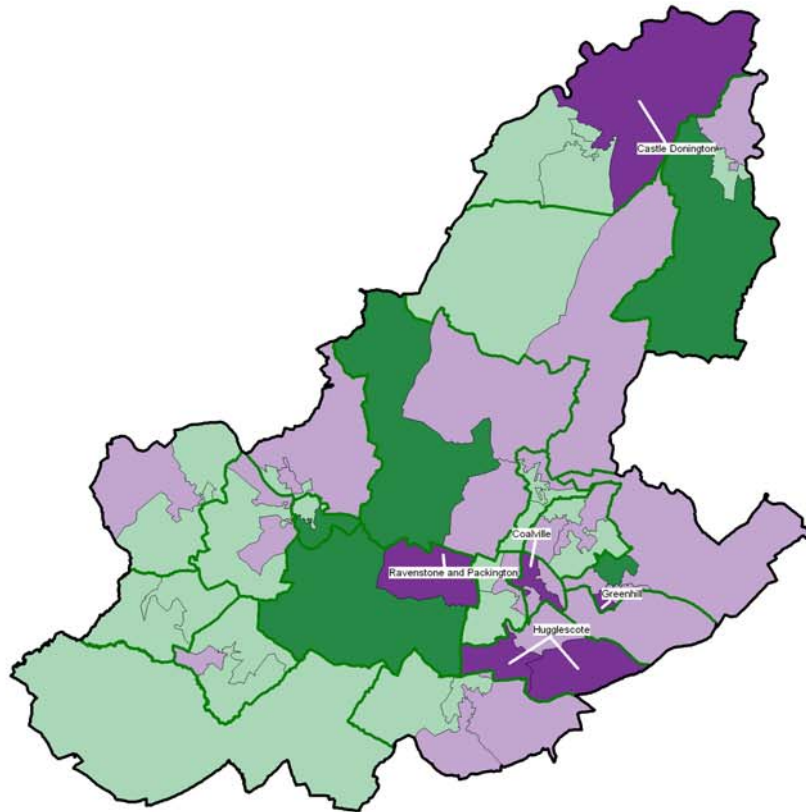


Table 6: Ten most deprived areas in North West Leicestershire

SOA	Ward	Score	Total >60yrs	Number deprived	National Rank
E01025956	Ravenstone & Packington	0.20	247	50	9,012
E01025930	Coalville	0.20	336	66	9,549
E01025938	Hugglescote	0.18	232	41	11,264
E01025932	Greenhill	0.17	332	56	12,464
E01025925	Castle Donington	0.17	445	74	12,488
E01025939	Hugglescote	0.16	290	47	13,023
E01025918	Ashby Holywell	0.16	280	45	13,036
E01025950	Moira	0.16	384	60	13,684
E01025957	Snibston	0.15	224	34	13,985
E01025936	Greenhill	0.15	430	66	14,067

**MAP 5: INCOME DEPRIVATION AFFECTING OLDER PEOPLE**

**Map 5**  
**Income Deprivation Affecting Older People**  
 highlighting the 10% most deprived Super Output Areas in North West Leicestershire



**Levels of Income Deprivation Affecting Older People in North West Leicestershire**  
 (Number of Super Output Areas)

- Top 10% - Most Deprived**
- 10% to 50%**
- 50% to 90%**
- Bottom 10% - Least Deprived**

**10% Most Deprived**  
 North West Leicestershire Super Output Areas

SOA Code	Ward
1.5956	Ravenstone & Packington
2.5930	Coalville
3.5938	Hugglescote
4.5932	Greenhill
5.5928	Castle Donington
6.5939	Hugglescote

Each Super Output Area has an average of about 1,500 people

- District Boundary**
- Electoral Ward Boundaries**
- Super Output Areas**

Source: 2001 Census, Output Area Boundaries.  
 Crown copyright 2003. Crown copyright material  
 is reproduced with the permission of the Controller  
 of HMSO  
 © Crown copyright 2005. All rights reserved.  
 Use of this image is limited to viewing on line and printing on paper.  
 Leicestershire County Council, LA100019271.  
 Produced by R&I Team, Chief Executives  
 Leicestershire County Council  
 Source: Office for Deputy Prime Minister 2004

## EMPLOYMENT DEPRIVATION

### Indicators

The employment deprivation domain measures the proportion of the working age population that are involuntarily excluded from the world of work. It includes both those who are registered as unemployed, but also includes elements of the more 'hidden unemployed' such as those who are out of the workforce through sickness. The indicators used are:

- Unemployment claimant count
- Incapacity Benefit claimants
- Severe Disablement Allowance claimants
- Participants in New Deal

### Commentary

Overall levels of deprivation are low in North West Leicestershire, with the majority of Super Output Areas ranked in the 50% least deprived in England. However there are a small number of areas which are ranked relatively highly. Part of Greenhill ward is ranked within the 10% most deprived in England with another part of Greenhill ward also ranked within the 20% most deprived in England.

The two SOAs in Greenhill ward are also ranked within the five most deprived areas in the county.

In North West Leicestershire, there are **4,079 people** who are employment deprived.

Graph 6: Spread of National Ranking of all SOAs in NW Leicestershire

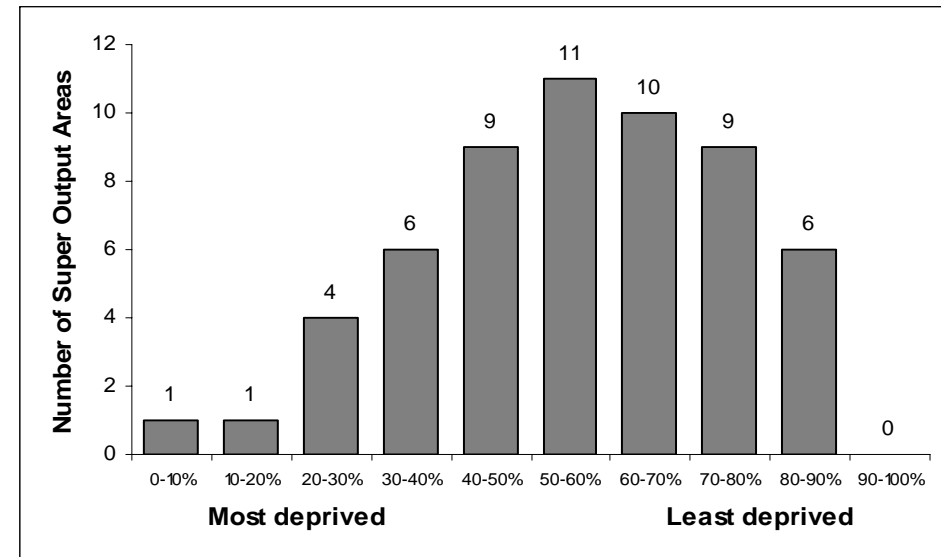
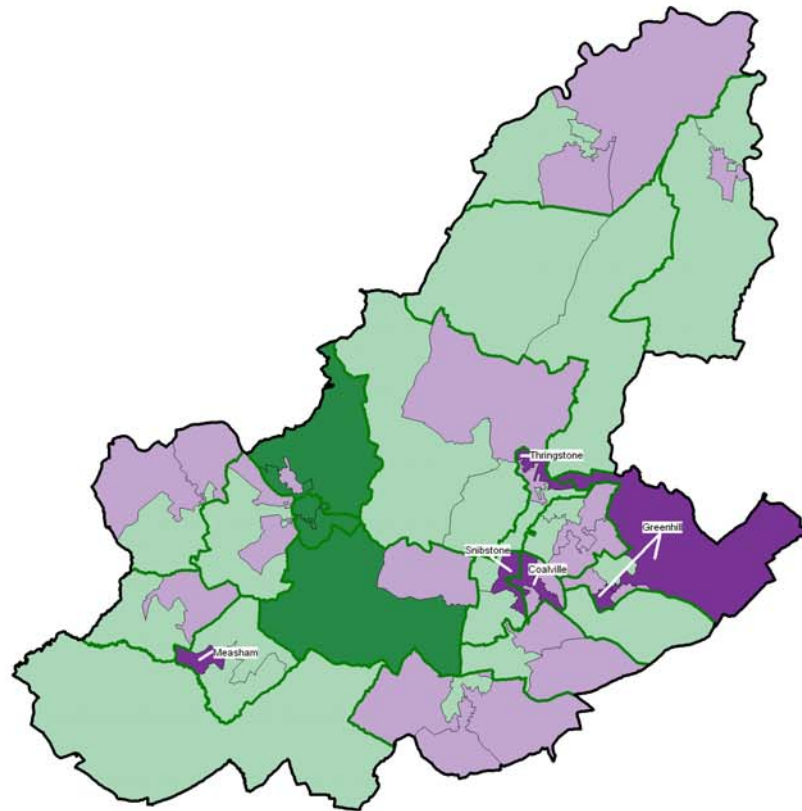


Table 7: Ten most deprived areas in North West Leicestershire

SOA	Ward	Score	District Rank	County Rank	National Rank
E01025934	Greenhill	0.22	1	2	2,535
E01025932	Greenhill	0.18	2	4	4,748
E01025949	Measham	0.15	3	12	7,401
E01025930	Coalville	0.13	4	17	9,324
E01025962	Thringstone	0.12	5	19	9,642
E01025957	Snibston	0.12	6	20	9,679
E01025950	Moira	0.12	7	21	9,921
E01025966	Whitwick	0.12	8	23	10,303
E01025927	Castle Donington	0.11	9	27	11,214
E01025918	Ashby Holywell	0.11	10	30	11,504

**MAP 6: EMPLOYMENT DEPRIVATION**

**Map 6**  
**Employment Deprivation**  
 highlighting the 10% most deprived Super Output Areas in North West Leicestershire



**Levels of Employment Deprivation in North West Leicestershire**  
 (Number of Super Output Areas)

- Top 10% - Most Deprived
- 10% to 50%
- 50% to 90%
- Bottom 10% - Least Deprived

**10% Most Deprived**  
 North West Leicestershire Super Output Areas

SOA Code	Ward
1.5934	Greenhill
2.5932	Greenhill
3.5949	Measham
4.5930	Coalville
5.5962	Thringstone
6.5957	Snibstone

Each Super Output Area has an average of about 1,500 people

- District Boundary
- Electoral Ward Boundaries
- Super Output Areas

Source: 2001 Census, Output Area Boundaries.  
 Crown copyright 2003. Crown copyright material is reproduced with the permission of the Controller of HMSO.

© Crown copyright 2005. All rights reserved.  
 Use of this image is limited to viewing on line and printing one copy.  
 Leicestershire County Council LA100019271.

Produced by R&I Team, Chief Executives  
 Leicestershire County Council

Source: Office for Deputy Prime Minister 2004

## HEALTH DEPRIVATION AND DISABILITY

### Indicators

This domain identifies areas with relatively high rates of people who die prematurely or whose quality of life is impaired by poor health or who are disabled. The indicators used to compile this domain include:

- Years of potential life lost
- Comparative Illness and Disability Ratio
- Measures of emergency admissions to hospital
- Measure of adults under 60 suffering from mood or anxiety disorders

### Commentary

Levels of health deprivation in North West Leicestershire are low with the majority of Super Output Areas ranked within the 50% least deprived in England. There are two areas in Greenhill ward which are ranked within the 20% most deprived in England. These areas are ranked as the second and third most deprived in the county in this domain. There are a further three Super Output Areas, parts of Measham, Coalville and Moira wards which are also ranked in the ten most deprived in the county.

Map 7 shows where the relative levels of health deprivation are higher.

Graph 7: Spread of National Ranking of all SOAs in NW Leicestershire

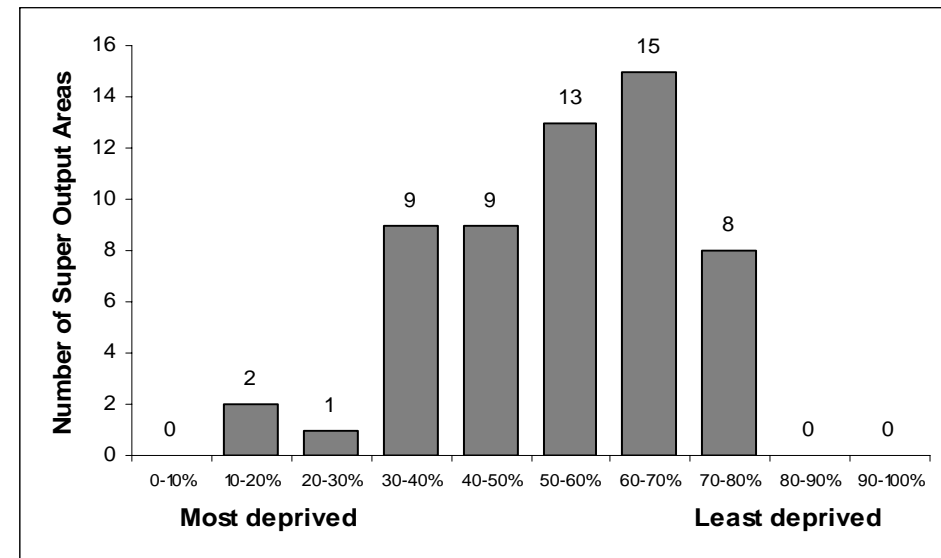
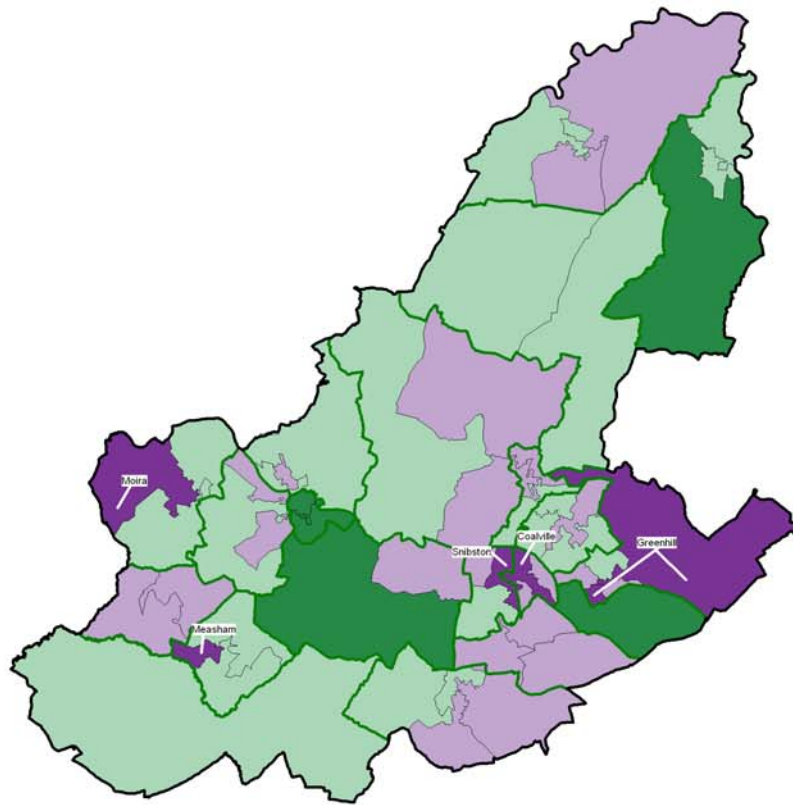


Table 8: Ten most deprived areas in North West Leicestershire

SOA	Ward	Score	District Rank	County Rank	National Rank
E01025934	Greenhill	0.84	1	2	5,822
E01025932	Greenhill	0.79	2	3	6,291
E01025949	Measham	0.57	3	7	8,590
E01025930	Coalville	0.44	4	9	10,188
E01025950	Moira	0.42	5	10	10,368
E01025957	Snibston	0.42	6	11	10,378
E01025918	Ashby Holywell	0.36	7	14	11,084
E01025943	Ibstock & Heather	0.33	8	16	11,487
E01025962	Thringstone	0.31	9	18	11,755
E01025920	Ashby Ivanhoe	0.27	10	20	12,272

**MAP 7: HEALTH DEPRIVATION AND DISABILITY**

**Map 7**  
**Health Deprivation and Disability**  
 highlighting the 10% most deprived Super Output Areas in North West Leicestershire



**Levels of Health & Disability Deprivation in North West Leicestershire**  
 (Number of Super Output Areas)

- Top 10% - Most Deprived
- 10% to 50%
- 50% to 90%
- Bottom 10% - Least Deprived

**10% Most Deprived**  
 North West Leicestershire Super Output Areas

SOA Code	Ward
1.5934	Greenhill
2.5932	Greenhill
3.5949	Measham
4.5930	Coalville
5.5950	Moir
6.5957	Snibston

Each Super Output Area has an average of about 1,500 people

- District Boundary
- Electoral Ward Boundaries
- Super Output Areas

Source: 2001 Census, Output Area Boundaries.  
 Crown copyright 2003. Crown copyright material is reproduced with the permission of the Controller of HMSO.  
 © Crown copyright 2005. All rights reserved.  
 Use of this image is limited to viewing on-line and printing one copy.  
 Leicestershire County Council, LA10019071.  
 Produced by R&I Team, Chief Executives  
 Leicestershire County Council  
 Source: Office for Deputy Prime Minister 2004

## EDUCATION, SKILLS AND TRAINING

### Indicators

This domain captures the extent of deprivation in education, skills and training of people living in a local area. The indicators used are:

#### Children / young people

- Average points score of pupils at Key Stage 2
- Average points score of pupils at Key Stage 3
- Average points score of pupils at Key Stage 4
- Proportion of young people not staying on in school or further education above 16
- Secondary school absence rate
- Proportion of those aged under 21 not entering higher education

#### Skills

- Proportion of working age adults with no or low qualifications

### Commentary

The District experiences higher levels of deprivation in this domain than in most of the others with more areas ranked within the 50% most deprived. There are two Super Output Areas ranked within the 10% most deprived in England, part of Greenhill and Measham wards, and a further ten areas ranked within the 20% most deprived in England.

The most deprived area, part of Greenhill ward is also the ranked as the most deprived in the county, and is ranked 263<sup>rd</sup> in England; an exceptionally high ranking when compared with the rest of the county.

Map 8 shows where levels of deprivation are higher.

Graph 8: Spread of National Ranking of all SOAs in NW Leicestershire

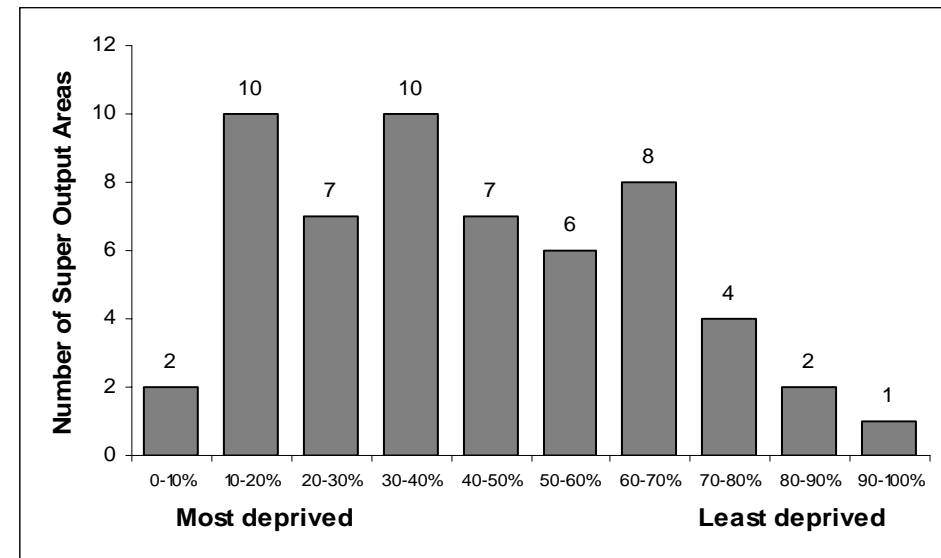
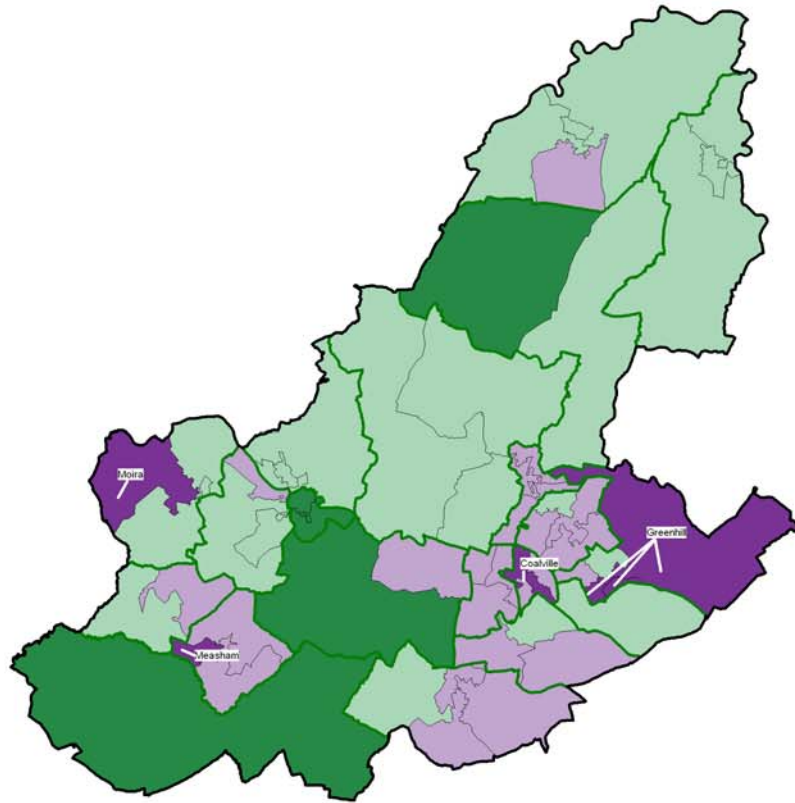


Table 9: Ten most deprived areas in North West Leicestershire

SOA	Ward	Score	District Rank	County Rank	National Rank
E01025932	Greenhill	83.16	1	1	263
E01025949	Measham	55.78	2	4	2,294
E01025934	Greenhill	42.17	3	13	4,672
E01025950	Moira	41.10	4	16	4,925
E01025930	Coalville	40.61	5	17	5,022
E01025933	Greenhill	39.26	6	20	5,342
E01025966	Whitwick	37.82	7	22	5,681
E01025939	Hugglescote	37.82	8	23	5,682
E01025931	Coalville	37.43	9	24	5,787
E01025940	Ibstock & Heather	37.19	10	25	5,859

**MAP 8: EDUCATION, SKILLS AND TRAINING**

**Map 8**  
**Education, Skills and Training Deprivation**  
 highlighting the 10% most deprived Super Output Areas in North West Leicestershire



**Levels of Education, Skills and Training Deprivation in North West Leicestershire**  
 (Number of Super Output Areas)

- Top 10% - Most Deprived
- 10% to 50%
- 50% to 90%
- Bottom 10% - Least Deprived

**10% Most Deprived**  
 North West Leicestershire Super Output Areas

SOA Code	Ward
1.5932	Greenhill
2.5949	Measham
3.5934	Greenhill
4.5950	Moira
5.5930	Coalville
6.5933	Greenhill

Each Super Output Area has an average of about 1,500 people

- District Boundary
- Electoral Ward Boudaries
- Super Output Areas

Source: 2001 Census, Output Area Boundaries. Crown copyright 2003. Crown copyright material is reproduced with the permission of the Controller of HMSO.  
 © Crown copyright 2005. All rights reserved.  
 Use of this image is limited to viewing on-line and printing one copy.  
 Leicestershire County Council LA10019271.  
 Produced by R&I Team, Chief Executives  
 Leicestershire County Council  
 Source: Office for Deputy Prime Minister 2004

## BARRIERS TO HOUSING AND SERVICES

### Indicators

This domain measures the barriers faced by the local population relating to housing along with a measure of the distance needed to travel to key local services. The indicators used are:

#### Wider Barriers

- Household overcrowding
- Percentage of households with assistance under the homeless provisions of housing legislation
- Difficulty of access to owner occupation

#### Geographical Barriers

- Road distance to GP premises
- Road distance to a supermarket or convenience store
- Road distance to a primary school
- Road distance to a Post Office

### Commentary

The District experiences average levels of deprivation in this domain with one Super Output Area ranked in the 20% most deprived in England, and a further five ranked in the 30% most deprived in England. The most deprived area in North West Leicestershire is part of Ashby Castle ward.

The more deprived areas are shown on Map 9. This map shows a different pattern of deprivation than the other domains. The more deprived areas are all located in the more rural parts of the District and reflect the more restricted access to key local services experienced by residents.

Graph 9: Spread of National Ranking of all SOAs in NW Leicestershire

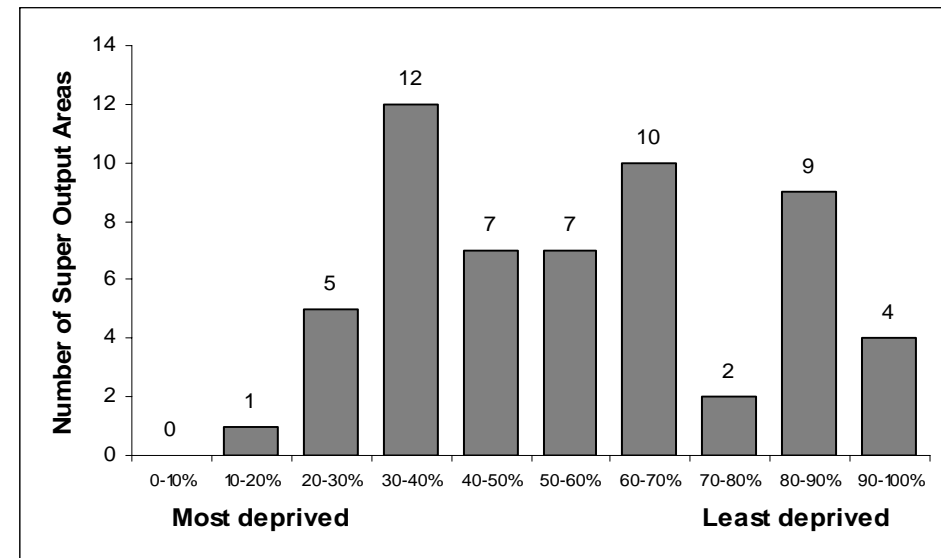
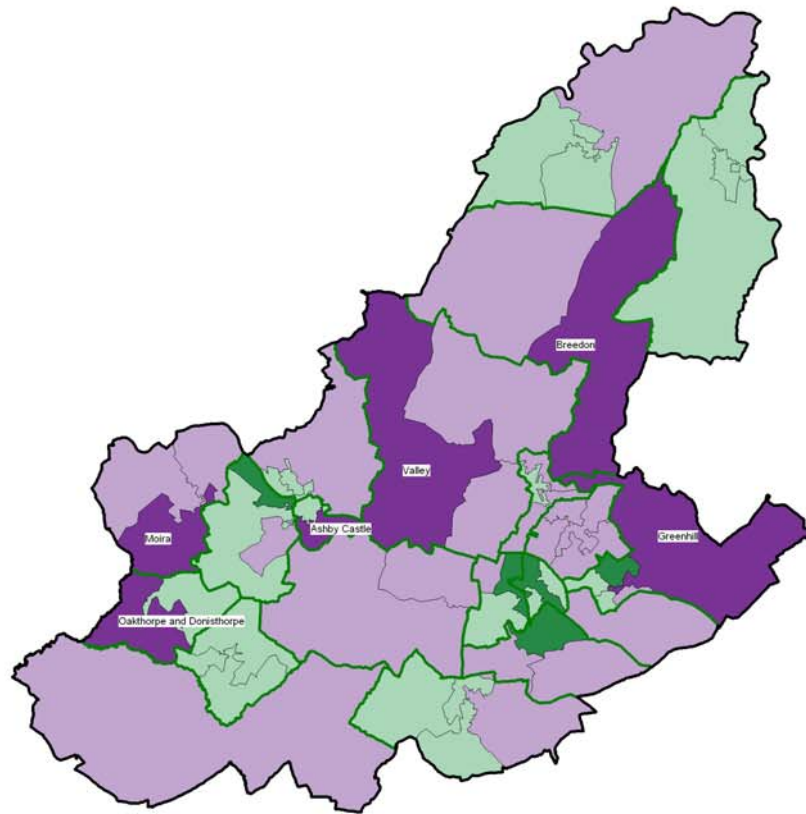


Table 10: Ten most deprived areas in North West Leicestershire

SOA	Ward	Score	District Rank	County Rank	National Rank
E01025914	Ashby Castle	33.40	1	18	5,033
E01025934	Greenhill	29.80	2	26	7,283
E01025954	Oakthorpe & Donisthorpe	29.68	3	27	7,380
E01025964	Valley	29.61	4	28	7,425
E01025951	Moira	28.24	5	34	8,457
E01025923	Breedon	27.26	6	39	9,308
E01025963	Valley	26.59	7	47	9,872
E01025913	Appleby	25.96	8	51	10,428
E01025924	Breedon	25.71	9	54	10,628
E01025952	Moira	25.49	10	56	10,822

**MAP 9: BARRIERS TO HOUSING AND SERVICES**

**Map 9**  
**Barriers to Housing and Services**  
 highlighting the 10% most deprived Super Output Areas in North West Leicestershire



**Levels of Housing and Services Deprivation in North West Leicestershire**  
 (Number of Super Output Areas)

- Top 10% - Most Deprived
- 10% to 50%
- 50% to 90%
- Bottom 10% - Least Deprived

**10% Most Deprived**  
 North West Leicestershire Super Output Areas

SOA Code	Ward
1.5914	Ashby Castle
2.5934	Greenhill
3.5954	Oakthorpe & Donisthorpe
4.5964	Valley
5.5951	Moira
6.5923	Breedon

Each Super Output Area has an average of about 1,500 people

- District Boundary
- Electoral Ward Boudaries
- Super Output Areas

Source: 2001 Census, Output Area Boundaries.  
 Crown copyright 2003. Crown copyright material is reproduced with the permission of the Controller of HMSO.  
 © Crown copyright 2005. All rights reserved.  
 Use of this image is limited to viewing, review and printing one copy.  
 Leicestershire County Council LA100619271.  
 Produced by R&I Team, Chief Executives  
 Leicestershire County Council  
 Source: Office for Deputy Prime Minister 2004

## LIVING ENVIRONMENT

### Indicators

This domain looks at both the indoor and outdoor living environment. The indicators used include:

#### Indoor Living Environment

- Social and private housing in poor condition
- Houses without central heating

#### Outdoor Living Environment

- Air quality
- Road traffic accidents involving injury to pedestrians and cyclists

### Commentary

The District experiences relatively low levels of deprivation in this domain with the majority of areas ranked in the 50% least deprived in England. There are no Super Output Areas in the District ranked within the 20% most deprived in England.

The more deprived areas are shown on Map 10. They are located in Kegworth and Whatton ward and around Coalville.

Graph10: Spread of National Ranking of all SOAs in NW Leicestershire

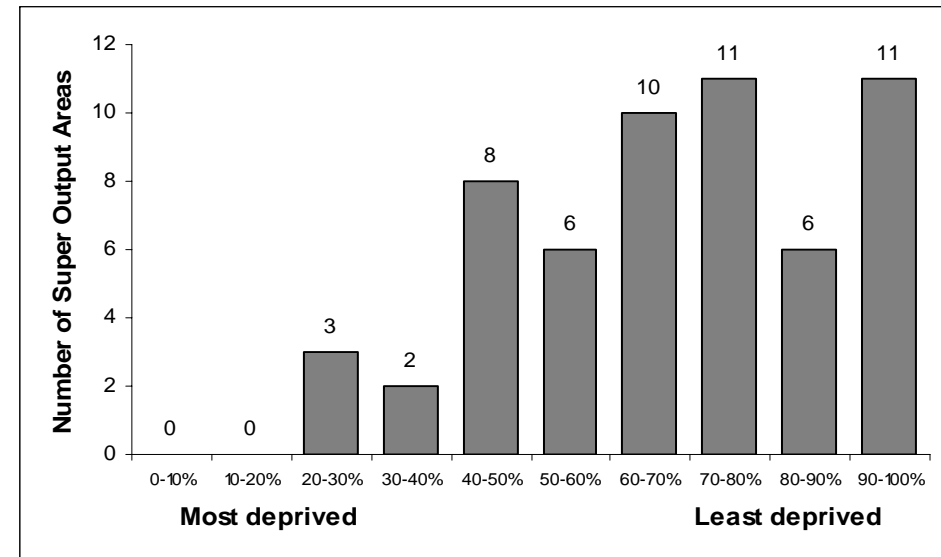
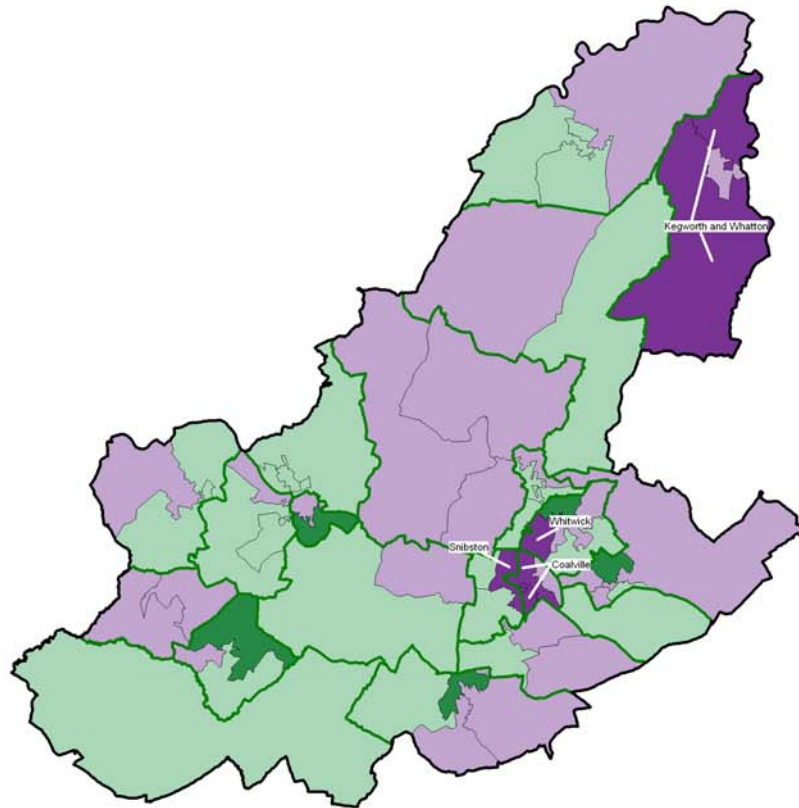


Table 11: Ten most deprived areas in North West Leicestershire

SOA	Ward	Score	District Rank	County Rank	National Rank
E01025946	Kegworth & Whatton	31.61	1	16	8,002
E01025944	Kegworth & Whatton	28.70	2	28	9,315
E01025930	Coalville	28.27	3	29	9,517
E01025957	Snibston	24.31	4	41	11,459
E01025931	Coalville	24.00	5	44	11,628
E01025969	Whitwick	20.23	6	56	13,765
E01025924	Breedon	19.75	7	62	14,103
E01025929	Coalville	19.58	8	65	14,232
E01025925	Castle Donington	19.33	9	66	14,416
E01025964	Valley	17.73	10	79	15,532

**MAP 10: LIVING ENVIRONMENT**

**Map 10**  
**Living Environment Deprivation**  
 highlighting the 10% most deprived Super Output Areas in North West Leicestershire



**Levels of Living Environment Deprivation in North West Leicestershire**  
 (Number of Super Output Areas)

- Top 10% - Most Deprived
- 10% to 50%
- 50% to 90%
- Bottom 10% - Least Deprived

**10% Most Deprived**  
 North West Leicestershire Super Output Areas

SOA Code	Ward
1.5946	Kegworth and Whatton
2.5944	Kegworth and Whatton
3.5930	Coalville
4.5957	Snibston
5.5931	Coalville
6.5969	Whitwick

Each Super Output Area has an average of about 1,500 people

- District Boundary
- Electoral Ward Boundaries
- Super Output Areas

Source: 2001 Census, Output Area Boundaries, Crown copyright 2003. Crown copyright material is reproduced with the permission of the Controller of HMSO.  
 © Crown copyright 2005. All rights reserved.  
 Use of this image is limited to viewing on-line and printing one copy.  
 Leicestershire County Council, LA100019271.  
 Produced by R&I Team, Chief Executives  
 Leicestershire County Council  
 Source: Office for Deputy Prime Minister 2004

## CRIME DOMAIN

### Indicators

This domain measures the rate of recorded crime for four main crime types – burglary, theft, criminal damage and violence.

### Commentary

Overall levels of crime deprivation are relatively high in North West Leicestershire with the majority of Super Output Areas ranked within the 50% most deprived in England. There are two Super Output Areas ranked in the 10% most deprived in England, part of Coalville and Breedon wards. These areas are also ranked in the top five most deprived in the county.

Six of the ten most deprived areas in the county in this domain are located in North West Leicestershire.

There are also a further nine areas ranked in the 20% most deprived in England. Map 11 shows that they are all located in the east of the district.

Graph 11: Spread of National Ranking of SOAs in NW Leicestershire

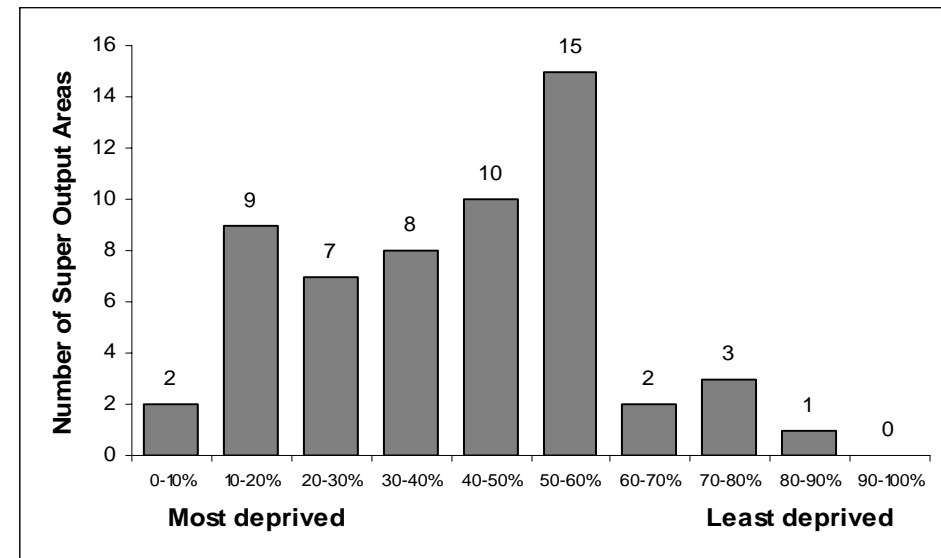
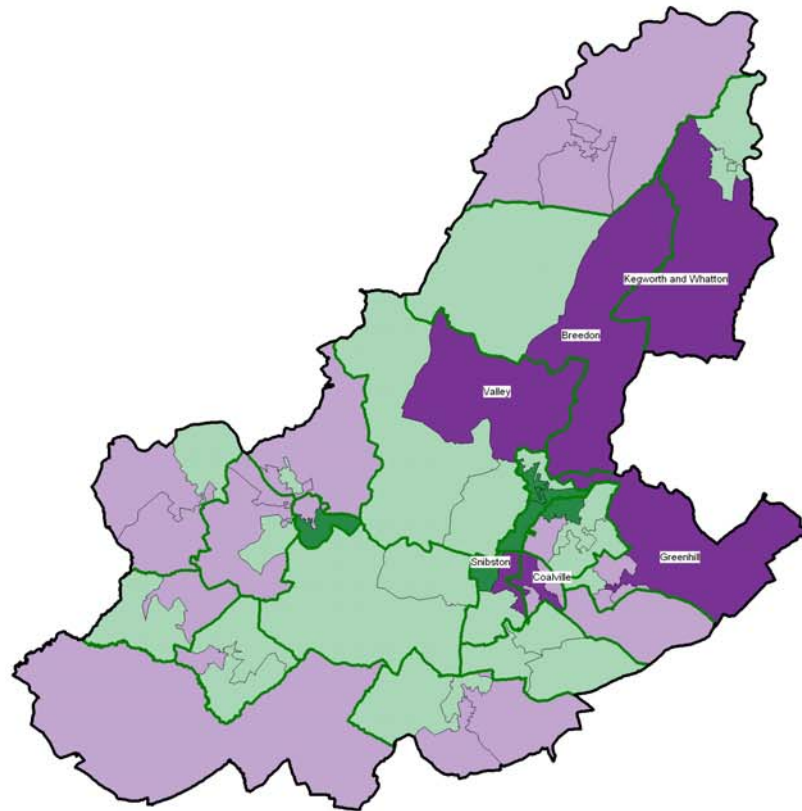


Table 12: Ten most deprived areas in North West Leicestershire

SOA	Ward	Score	District Rank	County Rank	National Rank
E01025930	Coalville	1.38	1	2	1,650
E01025923	Breedon	1.09	2	4	3,209
E01025963	Valley	0.98	3	7	4,044
E01025944	Kegworth & Whatton	0.94	4	8	4,438
E01025934	Greenhill	0.91	5	9	4,668
E01025957	Snibston	0.90	6	10	4,770
E01025931	Coalville	0.90	7	11	4,790
E01025935	Greenhill	0.85	8	12	5,350
E01025913	Appleby	0.80	9	13	5,752
E01025927	Castle Donington	0.78	10	15	5,957

**MAP 11: CRIME DOMAIN**

**Map 11**  
**Crime Deprivation**  
 highlighting the 10% most deprived Super Output Areas in North West Leicestershire



**Levels of Crime Deprivation in North West Leicestershire**  
 (Number of Super Output Areas)

- Top 10% - Most Deprived
- 10% to 50%
- 50% to 90%
- Bottom 10% - Least Deprived

**10% Most Deprived**  
 North West Leicestershire Super Output Areas

SOA Code	Ward
1.5930	Coalville
2.5923	Breedon
3.5963	Valley
4.5944	Kegworth & Whatton
5.5934	Greenhill
6.5957	Snibston

Each Super Output Area has an average of about 1,500 people

- District Boundary
- Electoral Ward Boundaries
- Super Output Areas

Source: 2001 Census, Output Area Boundaries. Crown copyright 2003. Crown copyright material is reproduced with the permission of the Controller of HMSO.  
 © Crown copyright 2005. All rights reserved. Use of this report is limited to viewing on line and printing one copy. Leicestershire County Council LA100019271.  
 Produced by R&I Team, Chief Executives Leicestershire County Council  
 Source: Office for Deputy Prime Minister 2004

## APPENDIX 1

The table below shows each Super Output Area in the district, the ward in which it is located along with the ranking within England (where a ranking of 1 = most deprived in England, 32,482 = least deprived in England). For ease of use, any area ranked within the 20% most deprived in England (ranked between 1 and 6,496) has been shaded.

SOA	Ward	IMD	Income	Employment	Health	Education	Barriers	Living Env	Crime	IDAC	IDAOP
E01025913	Appleby	22,723	29,027	23,421	20,115	24,718	10,428	25,927	5,752	30,782	25,210
E01025914	Ashby Castle	28,673	31,966	29,158	25,048	29,528	5,033	31,110	24,842	31,740	29,342
E01025915	Ashby Castle	27,232	27,863	28,959	25,170	27,198	20,146	21,862	8,298	30,339	21,174
E01025916	Ashby Holywell	26,246	27,995	27,071	21,431	21,455	26,514	24,056	8,162	30,500	20,083
E01025917	Ashby Holywell	25,321	25,497	27,327	24,207	20,602	13,228	25,072	12,364	25,801	18,161
E01025918	Ashby Holywell	14,667	10,300	11,504	11,084	15,787	21,061	29,721	17,352	9,722	13,036
E01025919	Ashby Ivanhoe	18,616	17,781	16,285	13,500	15,888	17,728	26,760	16,398	20,145	14,775
E01025920	Ashby Ivanhoe	14,957	11,925	13,967	12,272	11,251	29,540	22,123	12,343	10,735	17,944
E01025921	Ashby Ivanhoe	25,319	26,275	25,087	19,467	21,716	19,504	29,433	10,371	26,849	23,985
E01025922	Bardon	24,435	26,977	26,737	24,753	16,293	12,460	27,177	10,818	29,637	17,321
E01025923	Breedon	20,487	23,703	25,947	21,684	23,623	9,308	24,741	3,209	25,092	19,108
E01025924	Breedon	22,630	23,361	21,533	22,670	25,407	10,628	14,103	17,226	24,273	20,404
E01025925	Castle Donington	17,501	17,497	15,707	18,484	18,973	12,749	14,416	13,781	21,554	12,488
E01025926	Castle Donington	23,476	23,129	24,041	23,807	19,000	22,665	24,910	7,053	22,689	24,580
E01025927	Castle Donington	12,290	12,951	11,214	12,989	8,135	18,760	25,848	5,957	11,689	22,368
E01025928	Castle Donington	28,751	29,566	25,727	23,415	23,191	27,953	29,612	12,818	28,009	27,441
E01025929	Coalville	14,927	18,151	15,750	12,606	7,879	28,136	14,232	8,597	21,070	18,123
E01025930	Coalville	8,683	12,801	9,324	10,188	5,022	29,861	9,517	1,650	16,497	9,549
E01025931	Coalville	11,319	13,955	12,171	13,013	5,787	27,629	11,628	4,790	15,272	15,231
E01025932	Greenhill	4,037	4,105	4,748	6,291	263	22,797	20,466	6,093	3,533	12,464
E01025933	Greenhill	13,750	13,841	13,936	15,126	5,342	17,187	26,997	12,035	14,286	17,589
E01025934	Greenhill	3,594	2,633	2,535	5,822	4,672	7,283	21,379	4,668	1,564	15,734
E01025935	Greenhill	23,407	27,301	18,074	22,635	20,750	29,337	30,807	5,350	23,701	30,986
E01025936	Greenhill	16,828	13,285	17,090	16,758	9,776	26,480	21,239	15,357	11,934	14,067
E01025937	Hugglescote	21,247	23,253	17,303	16,268	14,153	29,907	20,007	16,181	25,842	18,627
E01025938	Hugglescote	18,206	17,725	20,287	14,286	10,051	13,249	29,959	16,989	18,790	11,264
E01025939	Hugglescote	14,148	14,691	16,351	15,046	5,682	13,169	16,250	18,438	15,887	13,023

Continued on next page

**APPENDIX 1**

SOA	Ward	IMD	Income	Employment	Health	Education	Barriers	Living Env	Crime	IDAC	IDAOP
E01025940	Ibstock & Heather	13,629	16,441	13,925	13,825	5,859	11,150	22,120	13,901	17,924	15,985
E01025941	Ibstock & Heather	21,430	23,997	15,807	18,608	14,395	27,210	25,131	14,131	24,812	23,095
E01025942	Ibstock & Heather	22,166	23,572	20,736	21,900	8,681	22,781	30,092	16,838	21,083	26,969
E01025943	Ibstock & Heather	12,611	13,555	12,102	11,487	6,490	26,959	22,329	7,433	14,585	14,745
E01025944	Kegworth & Whatton	21,786	29,279	24,813	25,325	22,541	17,872	9,315	4,438	25,702	31,344
E01025945	Kegworth & Whatton	22,443	24,071	17,292	20,227	20,670	21,575	17,752	16,057	21,194	28,514
E01025946	Kegworth & Whatton	20,365	22,310	18,091	18,685	20,354	22,785	8,002	17,477	23,009	17,745
E01025947	Measham	24,522	29,193	21,953	20,078	12,595	20,222	28,998	17,053	28,706	28,638
E01025948	Measham	24,442	21,451	25,889	19,880	12,880	23,693	31,178	18,233	21,559	20,120
E01025949	Measham	8,011	8,329	7,401	8,590	2,294	27,958	18,029	8,810	9,049	14,878
E01025950	Moira	9,196	8,597	9,921	10,368	4,925	11,587	15,650	11,438	7,825	13,684
E01025951	Moira	21,409	24,086	21,199	20,489	17,674	8,457	25,595	13,836	23,874	24,006
E01025952	Moira	19,139	18,815	17,092	19,466	13,532	10,822	29,820	17,675	16,532	24,282
E01025953	Oakthorpe & Donisthorpe	12,936	13,258	13,134	13,205	8,209	18,529	15,768	9,777	8,250	24,511
E01025954	Oakthorpe & Donisthorpe	19,218	21,431	20,268	18,578	17,756	7,380	19,776	14,100	19,968	25,674
E01025955	Ravenstone & Packington	29,596	30,979	27,962	25,858	27,795	17,259	25,792	16,515	28,405	30,123
E01025956	Ravenstone & Packington	14,659	13,546	13,492	13,288	12,804	10,871	19,410	18,949	15,822	9,012
E01025957	Snibston	9,820	10,025	9,679	10,378	6,971	29,666	11,459	4,770	10,980	13,985
E01025958	Snibston	20,207	18,026	20,670	18,348	10,275	15,108	28,935	23,092	15,578	20,148
E01025959	Snibston	21,758	24,896	19,537	18,787	10,389	23,006	24,379	17,041	23,034	27,000
E01025960	Thringstone	19,055	22,081	14,335	17,681	9,254	20,257	24,897	22,439	24,296	22,375
E01025961	Thringstone	23,134	25,358	20,620	20,997	9,994	17,462	26,823	26,414	29,465	20,811
E01025962	Thringstone	11,177	12,392	9,642	11,755	5,949	12,491	20,121	14,612	12,031	15,350
E01025963	Valley	14,501	15,776	17,032	16,324	16,382	9,872	17,571	4,044	13,484	17,573
E01025964	Valley	22,796	26,596	23,837	22,067	20,280	7,425	15,532	19,485	23,959	29,244
E01025965	Valley	18,942	20,819	17,637	16,989	15,649	12,290	16,200	19,012	22,504	18,843
E01025966	Whitwick	11,325	11,853	10,303	13,428	5,681	11,807	19,071	15,351	9,750	18,757
E01025967	Whitwick	20,584	25,944	16,253	21,963	7,929	15,141	29,747	21,432	25,320	28,640
E01025968	Whitwick	26,414	29,814	23,566	20,895	16,188	14,995	30,371	23,091	29,768	26,405
E01025969	Whitwick	17,004	21,432	19,713	19,673	10,057	13,012	13,765	8,845	22,057	18,608

---

If you require information contained in this publication in another version eg large print, Braille, tape or an alternative language please call 0116 265 8262 or email [sgeddes@leics.gov.uk](mailto:sgeddes@leics.gov.uk)

---