

Unemployment Bulletin

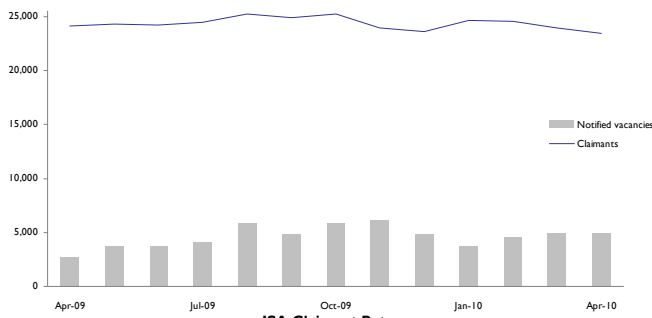
April 2010



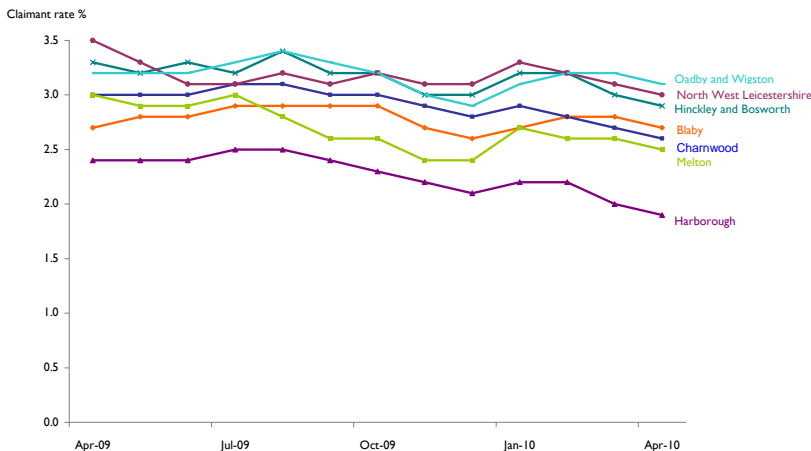
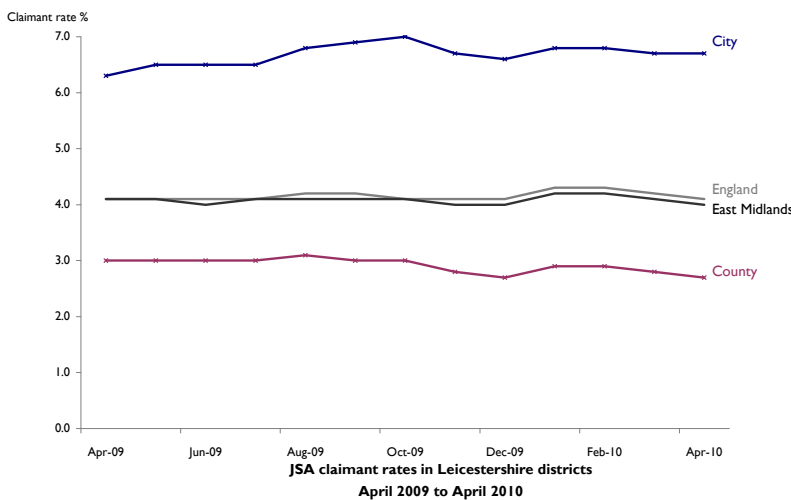
Recession Summary

This additional front page provides a monthly snapshot of the economy at a local level. JSA claimants and vacancies are used to exemplify recent change and trends over the past 12 months. Following tables have also been adapted to include monthly and annual comparisons.

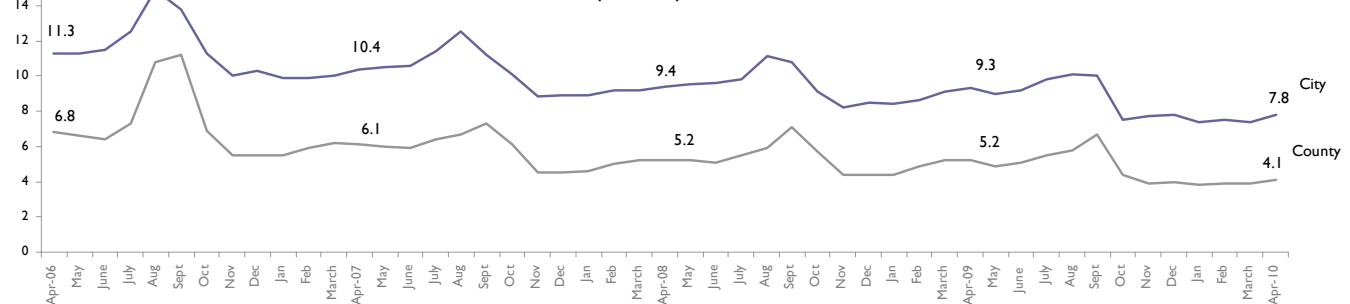
JSA claimants and new notified vacancies in Leicester and Leicestershire
April 2009 to April 2010



JSA Claimant Rate
April 2009 to April 2010



% NEET in Leicester and Leicestershire:
April 2006 - April 2010



Key points

- There were 23,437 people claiming JSA benefits in the sub-region in April 2010 compared to 23,997 in March 2010 and 23,590 in April 2009
- The JSA claimant numbers in April 2010 decreased by 418 in the County and 142 in the City. Rates decreased by 0.1% points in the County and remained unchanged in the City.
- In the City, Rushey Mead ward had the largest monthly increase in claimants (17). Thurncourt ward had the largest monthly decrease in claimants (-21). New Parks ward continues to have the highest claimant rate in the City at 9.1%
- In the County claimant rates decreased by 0.1% points in all districts. Rates decreased by 0.7% points in Hugglescote ward.
- In the sub-region, there were 4,993 notified vacancies in March 2010 compared to 5,016 the previous month. There were 4,090 unfilled live vacancies in April. This is a ratio of 5.7 claimants per unfilled live vacancy, up from 5.1 last month.
- In April 2010 4.1% of 16-18 year olds in the County and 7.8% in the City were Not in Education, Employment or Training (NEET). This remains lower than the rates for 2009.

Unemployment Bulletin

April 2010



Introduction

The Unemployment Bulletin provides a monthly update of the latest unemployment and benefit data for Leicester and Leicestershire. The data is sourced from Nomis (www.nomisweb.co.uk) which contains data from the Office for National Statistics, the Department of Work and Pensions and other official sources. Some figures have been calculated by Leicestershire County Council and where this is the case it is stated in the source.

There are a number of ways of measuring unemployment and this bulletin mainly focuses on the Claimant Count which is a measure of the number or proportion of people receiving Job Seekers Allowance (JSA) and National Insurance Credits at Jobcentre Plus local offices. This is not an official measure of unemployment but it is the only indicative statistic available for areas smaller than Local Authorities.

Official estimates of unemployment in the UK are obtained from the Labour Force Survey (LFS) using the internationally agreed International Labour Organisation (ILO) definition. The ILO definition is based on the number of people without jobs who are looking for work and are available to start work (and includes people whether or not they are eligible to receive unemployment related benefits). The LFS unemployment figures which are subject to sampling differences are not reliable at small areas. The Claimant Count is released on a monthly basis and is available down to ward level, so is used as a more current indicator of unemployment levels. Using the two sources together provides a more comprehensive picture of the labour market.

There is a large degree of overlap between the Claimant Count and Unemployment (LFS ILO definition) although the latter figures are generally higher. People who are not claimants can appear among the unemployed if they are not entitled to unemployment related benefits. Similarly, claimants of unemployment related benefits may not appear in the measure of unemployment if they stated that they are not seeking or are not available to start work.

Tables 1 to 7 use Claimant Count data and Table 8 shows the Unemployment (LFS ILO definition) figures.

Table 1: Resident-Based Claimant Count (JSA) Proportions: April 2010

Area	Claimant Count Proportion (working age)			Total Claimant Count	Change since last month	Change since last year	Previous months Proportion (change)	Previous years Proportion (change)
	Total	Male	Female					
Leicester Shire	4.0%	5.4	2.4	23,437	-560	-657	4.1%(-0.1)	4.1%(-0.1)
Leicestershire County	2.7%	3.5	1.7	10,634	-418	-1,374	2.8%(-0.1)	3.0%(-0.3)
Leicester City	6.7%	9.2	3.9	12,803	-142	717	6.7%(0.0)	6.3%(0.4)
Rutland	1.6%	1.9	1.1	362	29	-27	1.7%(-0.1)	1.7%(-0.1)
East Midlands	4.0%	5.4	2.3	108,731	-3,698	-3,228	4.1%(-0.1)	4.1%(-0.1)
UK	4.1%	5.7	2.4	1,568,128	-46,724	10,512	4.2%(-0.1)	4.1%(0.0)

Source: Office for National Statistics (Nomis)

Note: Leicester Shire comprises the areas of Leicestershire County and Leicester City only.

National Statistics will release the May 2010 unemployment figures on Wednesday 16th June 2010.

Archived Unemployment Bulletins and other reports produced by Leicestershire County Council are available on the Leicestershire Statistics and Research Online website, www.lsr-online.org

Table 2: Resident-Based Claimant Count (JSA) Proportions: April 2010.

Districts	Claimant Count Proportion (working age)	Total Claimant Count	Total last month	Total last year	Previous months Proportion (change)	Previous years Proportion (change)
Oadby & Wigston	3.1%	1,075	1,102	1,094	3.2%(-0.1)	3.2%(-0.1)
NW Leicestershire	3.0%	1,667	1,720	1,924	3.1%(-0.1)	3.5%(-0.5)
Hinckley & Bosworth	2.9%	1,890	1,958	2,119	3.0%(-0.1)	3.3%(-0.4)
Blaby	2.7%	1,527	1,583	1,554	2.8%(-0.1)	2.7%(0.0)
Charnwood	2.6%	2,785	2,923	3,220	2.7%(-0.1)	3.0%(-0.4)
Melton	2.5%	756	763	899	2.6%(-0.1)	3.0%(-0.5)
Harborough	1.9%	934	1,003	1,198	2.0%(-0.1)	2.4%(-0.5)

Source: Office for National Statistics (Nomis)

Table 3: Resident-Based Claimant Count (JSA) Proportions: in Market Towns; April 2010.

Market Towns	Claimant Count Proportion (working age)	Total Claimant Count	Previous months Proportion (change)	Previous years Proportion (change)
Coalville	3.6%	782	3.7%(-0.1)	4.1%(-0.5)
Hinckley (inc. Burbage & Earl Shilton)	3.5%	1,189	3.5%(0.0)	6.7%(-3.2)
Wigston	3.2%	484	3.2%(0.0)	3.0%(0.2)
Melton Mowbray	3.1%	500	3.1%(0.0)	3.6%(-0.5)
Loughborough (including Hathern)	2.9%	1,256	3.0%(-0.1)	3.2%(-0.3)
Ashby de la Zouch	2.7%	189	2.5%(0.2)	3.2%(-0.5)
Oadby	2.6%	363	2.7%(-0.1)	2.6%(0.0)
Market Harborough	2.1%	269	2.2%(-0.1)	3.2%(-1.1)
Oakham	2.1%	136	2.1%(0.0)	1.9%(0.2)

Source: Office for National Statistics (Nomis); Market Town geographies defined by Leicestershire County Council and figures calculated using ONS Claimant Count (JSA) figures and denominators

Table 4: Claimant Count (JSA) by Age and Duration; April 2010.

Area	18-24 years old				Over 25 years old			
	Up to 6 months	6-12 months	13-18 months	Over 18 months	Up to 6 months	6-12 months	13-18 months	Over 18 months
Blaby	315	100	30	10	630	225	135	85
Charnwood	565	185	60	10	1,120	435	235	160
Harborough	180	45	10	0	430	155	70	45
Hinckley & Bosworth	390	125	45	5	805	260	155	105
Melton	170	40	15	5	345	85	60	40
NW Leicestershire	385	95	40	5	685	230	125	95
Oadby & Wigston	210	65	20	5	465	145	85	70
Leicester City	2,305	910	345	45	4,340	2,225	1,330	1,275
Leicestershire County	2,215	650	215	35	4,480	1,530	870	600
Rutland	80	20	10	0	160	50	20	15
Leicester Shire	4,520	1,560	560	75	8,815	3,755	2,200	1,870

Source: Office for National Statistics (Nomis) Note: Figures are rounded to the nearest 5.

Claimant Count (JSA) by Ethnicity

JSA benefit data have been published by the Office for National Statistics (ONS) for many years as a key labour market indicator. In November 2006 ONS published JSA claimant data by ethnicity for the first time. The data is available for the detailed ethnic groups down to Local Authority level and is backdated to April 2005.

JSA claimant data by ethnicity has been included in Tables 5, 6, and 7 of this bulletin. The JSA data by ethnicity used in these table is a month in arrears of the other Claimant Count data in the other tables in the bulletin.

For more information, please see; www.nomisweb.co.uk/articles/news/files/DWP_Ethnicity_JSA.pdf

Table 5: Claimant County (JSA) by Ethnicity; March 2010.

Area	White	Mixed	Black or Black British	Asian or Asian British	Chinese or Other Ethnic Group	'Non White'	Prefer not to say / Unknown
Blaby	1,350	25	30	85	10	150	80
Charnwood	2,410	45	30	250	45	370	145
Harborough	905	5	5	30	5	45	55
Hinckley & Bosworth	1,630	10	10	25	15	60	265
Melton	740	5	0	0	0	5	15
NW Leicestershire	1,615	15	5	5	0	25	80
Oadby & Wigston	785	15	25	220	10	275	45
Leicester City	6,895	385	1,210	3,300	355	5,250	805
Leicestershire County	9,435	125	105	620	80	930	690
Leicester Shire	16,330	505	1,315	3,920	435	6,175	1,490
East Midlands	92,485	1,915	4,105	5,995	1,285	13,300	6,340
Great Britain	1,228,990	25,830	88,085	78,545	27,340	219,800	102,960

Note: Figures are rounded to the nearest 5.

Sources: Office for National Statistics (Nomis)

Table 6: Resident-based Claimant Count (JSA) Proportions by Ethnicity; March 2010.

Area	White	Mixed	Black or Black British	Asian or Asian British	Chinese or Other Ethnic Group	'Non White'
Blaby	1.6%	2.3%	3.8%	2.1%	1.7%	2.3%
Charnwood	1.7%	2.4%	2.1%	2.3%	1.6%	2.2%
Harborough	1.2%	0.6%	1.3%	1.5%	1.3%	1.3%
Hinckley & Bosworth	1.6%	1.1%	2.5%	1.0%	3.0%	1.4%
Melton	1.6%	1.7%	0.0%	0.0%	0.0%	0.4%
NW Leicestershire	1.9%	2.1%	1.3%	0.4%	0.0%	0.9%
Oadby & Wigston	1.7%	1.9%	3.1%	2.9%	1.7%	2.8%
Leicester City	3.8%	5.4%	9.8%	3.9%	9.3%	4.9%
Leicestershire County	1.6%	2.0%	2.4%	2.1%	1.5%	2.1%
Leicester Shire	2.1%	3.7%	7.9%	3.5%	4.8%	4.1%
East Midlands	2.3%	3.4%	7.1%	3.0%	3.4%	3.8%

Source: Office for National Statistics (Nomis). Proportions calculated by Leicestershire County Council using ONS mid-2005 experimental estimates of population by ethnic group, published October 2007

Table 7: Claimant Count (JSA) by Ethnicity, Gender and Age; March 2010.

	Total	Previous month	Previous year	Male				Female			
				Aged <18	Aged 18-24	Aged 25-49	Aged 50+	Aged <18	Aged 18-24	Aged 25-49	Aged 50+
Leicestershire											
'White'	16,330	16,840	16,140	45	3,455	6,420	1,995	30	1,590	2,075	720
'Non-white'	6,175	6,210	5,360	0	1,075	2,545	640	0	555	1,035	325
Leicester City											
'White'	6,895	7,040	6,225	20	1,515	2,825	745	15	650	865	260
'Non-white'	5,245	5,290	4,555	0	895	2,200	550	0	465	855	280
Leicestershire County											
'White'	9,440	9,805	9,925	25	1,940	3,595	1,250	15	940	1,210	465
'Non-white'	925	920	805	0	175	345	90	0	90	180	45

Source: Office for National Statistics (Nomis)

Unemployment: International Labour Organisation (ILO) Definition

Official estimates of unemployment in the UK are obtained from the Labour Force Survey (LFS) using the internationally agreed International Labour Organisation (ILO) definition. The ILO definition is based on the number of people without jobs who are looking for and available to start work. The LFS unemployment figures which are subject to sampling differences are not available for smaller areas. The Claimant Count is released on a monthly basis and is available down to ward level, so is used as a more current indicator of unemployment levels.

Table 8: Unemployment Rates: ILO Definition; October 2008 - September 2009

Area	October 2008 - September 2009		October 2007 - September 2008	
	ILO Unemployment Rate (working age)	Total Persons ILO Unemployed	ILO Unemployment Rate (working age)	Total Persons ILO Unemployed
United Kingdom	7.6%	2,253,200	5.5%	1,620,000
East Midlands	7.4%	162,600	5.5%	121,500
Leicestershire	7.8%	36,300	6.5%	30,500
Leicester City	12.1%	16,900	11.9%	16,400
Leicestershire County	5.9%	19,400	4.2%	14,100

Source: Labour Force Survey/Annual Population Survey, Office for National Statistics (Nomis)

Other Department for Work and Pensions Benefits Statistics

Job Seekers Allowance is one of a number of types of benefit which is related to worklessness, and recipients of this benefit constitute the most visible group of people who are out of work. However, many people have been diverted away from Job Seekers Allowance on to other benefits, the largest number being onto Incapacity Benefit. Nationally, the number of people claiming Incapacity Benefit is over three times the number of people out of work and claiming JSA.

The government recently published a Green Paper on welfare reform in which it is argued that to meet the goal of reaching a UK employment rate of 80%, more people on inactive benefits must be moved into work, particularly those who have been on benefits for a long time.

One method of classifying benefit claimants is by breaking them down into statistical groups. This presents the main reason why an individual is claiming benefit. Benefits are arranged hierarchically and claimants are assigned to the top most benefit which they receive. In this way each claimant only appears once, even though they may claim more than one benefit - the total number of working-age people who are claiming one or more key benefits is often used as a proxy for worklessness.

These figures are provided by the Department for Work and Pensions and are updated quarterly.

Table 9: Working-age people claiming one or more key DWP benefit by duration; November 2009

Area	Number	All benefits			Duration (proportion of all claimants)				
		Rate	Previous year number	Previous year rate	<6mths	6mths - 1yr	1yr - 2yrs	2yrs - 5yrs	+5yrs
Blaby	5,420	9.6	4,790	8.4	25%	12%	11%	15%	37%
Charnwood	11,070	10.2	9,820	9.0	26%	12%	11%	16%	35%
Harborough	3,930	8.0	3,470	7.0	27%	11%	10%	14%	37%
Hinckley &	7,190	11.1	6,300	9.7	26%	12%	11%	16%	35%
Melton	2,800	9.4	2,470	8.3	27%	11%	11%	15%	35%
NW	7,070	12.8	6,470	11.7	24%	10%	11%	16%	39%
Oadby and	3,680	10.6	3,260	9.4	25%	13%	12%	16%	35%
Leicester City	41,500	21.6	37,530	19.5	24%	13%	12%	16%	35%
Leicestershire	41,160	10.3	36,580	9.1	26%	12%	11%	16%	36%
Rutland	1,520	6.7	1,360	6.0	25%	10%	11%	16%	38%
East Midlands	413,840	15.1	376,820	13.7	24%	11%	11%	16%	38%
Great Britain	5,840,290	15.8	5,385,690	14.6	24%	11%	11%	15%	39%

Source: Department of Work and Pension (Nomis)

Table 10: Benefit Claimants by Statistical Group - Main reason for claiming benefit; November 2009

Statistical group	East Midlands		Leicester City		Leicestershire County	
	Number	Rate	Number	Rate	Number	Rate
Employment and Support Allowance & Incapacity Benefits	181,060	6.6%	16,310	8.5%	16,880	4.2%
Job Seeker	106,920	3.9%	12,510	6.5%	10,740	2.7%
Lone Parent	45,410	1.7%	5,610	2.9%	4,010	1.0%
Carer	32,250	1.2%	3,100	1.6%	3,610	0.9%
Disabled	29,320	1.1%	2,130	1.1%	3,560	0.9%
Others on income related benefit	12,680	0.5%	1,420	0.7%	1,390	0.3%
Bereaved	6,200	0.2%	410	0.2%	970	0.2%
Total	413,840	15.1%	41,500	21.6%	41,160	10.3%

Source: Department of Work and Pension (Nomis)

Note: Benefits are arranged hierarchically and claimants are assigned to the top most benefit they receive. Each claimant appears once only, even though some claim more than one benefit, permitting the estimation of the total number of people claiming one or more benefits. The Statistical Group hierarchy is a) Jobseeker b) ESA & Incapacity benefits c) Lone parents d) Carers e) Other income-related benefits f) Disabled g) Bereaved h) Housing Benefit i) receiving State Pension only. Thus a person who is a lone parent and receives Incapacity Benefit would be classified as receiving incapacity benefits. This is only one of the possible ways in which claimants could be classified and alternative classifications are possible.

For more information about DWP statistics and research www.dwp.gov.uk/asd/data_guide.asp

Definitions

Claimant Count - the count of claimants of unemployment related benefits is based on the administrative records of people claiming these benefits. Since October 1996 this has been the number of people claiming Job Seekers Allowance (JSA). The publication of claimant count figures is normally five weeks after the date to which they refer. The claimant count is accurate down to very small geographic areas and is unaffected by sampling variability since it is a 100% count. This means it can be used as an indicator of those without work down to small areas.

Resident-based Claimant Count Proportions - express the number of claimants resident in an area as a percentage of the working age population resident in that area. Claimant count rates can also be expressed as a proportion of the workforce jobs in an area, however in smaller areas using workforce job-based rates can cause distortions in the rates caused by commuting patterns. Using resident-based proportions avoids this distortion.

Unemployment (LFS ILO definition) - The definition of unemployment is internationally agreed and recommended by the International Labour Organisation (ILO) - an agency of the United Nations. Many countries use this definition. By this definition unemployed people are:

- without a job, want a job, have actively sought work in the last 4 weeks and are available to start work in the next 2 weeks, or
- out of work, have found a job and are waiting to start it in the next 2 weeks

Unemployment Rate (LFS ILO definition) - expresses the number of unemployed people resident in an area as a percentage of the economically active working age population resident in that area.

Labour Force Survey - The Labour Force Survey is a random sample survey which is carried out throughout the UK. It is conducted every three months using around 53,000 households. The survey collects information about the personal circumstances and work of everyone living in these households. The Office for National Statistics (ONS) uses the Labour Force Survey as its source for unemployment data. Unemployment is measured through questions asked in the survey and not by interviewing everybody in the country. Answers are then weighted to represent everyone. As with any sample survey there is sampling variability and this is high for areas below regional level. Therefore, the figures are not reliable for small areas. Each month the ONS releases statistics on the number of people who are unemployed in the United Kingdom for the latest available 3-month rolling period.

Economically Active - people aged 16 or over who are either in employment or are unemployed (LFS ILO definition)

Economically Inactive - people aged 16 or over who are neither in employment nor unemployed (LFS ILO definition) - e.g. they do not have a job and do not want a job. This group includes, for example, those who are looking after the family and/or home or retired.

Working Age Population - Working age is defined as 16-64 for males and 16-59 for females. The working age population figures are derived from mid-year 2006 population estimates.

Benefit Claimants Statistical Group - Benefits are arranged hierarchically and claimants are assigned to the top most benefit they receive. Each claimant appears once only, even though some claim more than one benefit, permitting the estimation of the total number of people claiming one or more benefits. The Statistical Group hierarchy is a) Jobseeker b) Incapacity benefits c) Lone parents d) Carers e) Other income-related benefits f) Disabled g) Bereaved h) Housing Benefit i) receiving State Pension only. Thus a person who is a lone parent and receives Incapacity Benefit would be classified as receiving incapacity benefits. The total number of working-age people who are claiming one or more key benefits is often used as a proxy for worklessness. This is only one of the possible ways in which claimants could be classified and alternative classifications are possible.

For further information on unemployment statistics please refer to the document entitled 'How exactly is unemployment measured?' which is produced by the Office for National Statistics:

www.statistics.gov.uk/downloads/theme_labour/unemployment.pdf

For further information about Department of Work and Pensions statistics and research:

www.dwp.gov.uk/asd/data_guide.asp

For enquiries about the Unemployment Bulletin please contact Joelle Bradly on 0116 305 7341

**Claimant Count (JSA) Ward Data
April 2010**

			Blaby District					
			Total	Last month	Last year	Male %	Female %	Total %
Code	Wards (resident-based proportions)							
1	31UBFY	Blaby South	81	85	86	4.3	1.6	3.0
2	31UBFZ	Cosby with South Whetstone	57	60	60	2.3	1.5	1.9
3	31UBGA	Countesthorpe	84	81	91	2.5	1.5	2.0
4	31UBGB	Croft Hill	29	30	32	2.1	2.3	2.2
5	31UBGC	Ellis	64	73	65	3.0	1.0	2.1
6	31UBGD	Enderby and St. John's	101	100	89	5.8	1.9	3.8
7	31UBGE	Fairstone	94	83	66	5.2	1.9	3.7
8	31UBGF	Forest	105	100	96	2.9	2.0	2.5
9	31UBGG	Millfield	56	57	56	6.1	2.5	4.4
10	31UBGH	Muxloe	51	48	36	2.6	1.6	2.2
11	31UBGJ	Narborough and Littlethorpe	83	85	100	3.4	1.5	2.5
12	31UBGK	Normanton	32	30	28	2.2	1.8	2.0
13	31UBGL	North Whetstone	93	101	94	3.9	1.7	2.9
14	31UBGM	Pastures	56	65	68	2.3	1.3	1.8
15	31UBGN	Ravenhurst and Fosse	183	183	185	5.7	2.3	4.1
16	31UBGP	Saxondale	131	142	132	3.3	1.9	2.7
17	31UBGQ	Stanton and Flamville	115	120	125	3.0	2.2	2.6
18	31UBGR	Winstanley	112	140	145	3.3	1.5	2.5
		Blaby District	1,527	1,583	1,554	3.5	1.8	2.7

These figures are suppressed as value is 1 or 2.

Source: Office for National Statistics

If you require further information please contact Joelle Bradly, Policy, Performance & Research, Chief Executive's Department, Leicestershire County Council on 0116 3055883.

**Claimant Count (JSA) Ward Data
April 2010**

Charnwood Borough

Code		Wards (resident-based proportions)	Total	Last month	Last year	Male %	Female %	Total %
1	3IUCGG	Anstey	115	114	136	4.5	1.6	3.1
2	3IUCGH	Barrow and Sileby West	75	86	93	2.7	1.3	2.0
3	3IUCGJ	Birstall Wanlip	78	76	74	3.0	1.9	2.5
4	3IUCGK	Birstall Watermead	107	114	114	3.6	1.7	2.7
5	3IUCGL	East Goscote	25	29	55	2.1	0.6	1.3
6	3IUCGM	Forest Bradgate	22	27	35	1.4	0.7	1.1
7	3IUCGN	Loughborough Ashby*	119	127	117	2.6	1.1	1.9
8	3IUCGP	Loughborough Dishley and Hathern*	101	105	145	3.5	1.5	2.5
9	3IUCGQ	Loughborough Garendon*	86	88	122	2.9	1.3	2.1
10	3IUCGR	Loughborough Hastings*	281	282	232	9.7	3.5	6.8
11	3IUCGS	Loughborough Lemyngton*	193	208	239	5.8	2.5	4.3
12	3IUCGT	Loughborough Nanpantan*	31	33	41	0.7	0.9	0.8
13	3IUCGU	Loughborough Outwoods*	35	43	52	1.5	0.5	1.1
14	3IUCGW	Loughborough Shelthorpe*	187	211	209	5.3	2.5	3.9
15	3IUCGX	Loughborough Southfields*	97	101	107	2.6	1.1	1.9
16	3IUCGY	Loughborough Storer*	126	141	135	3.2	1.5	2.5
17	3IUCGZ	Mountsorrel	131	138	156	4.0	1.7	2.9
18	3IUCHA	Queniborough	37	34	33	2.9	1.3	2.1
19	3IUCHB	Quorn and Mountsorrel Castle	77	85	81	2.8	1.1	2.0
20	3IUCHC	Rothley and Thurcaston	58	53	65	2.3	0.8	1.6
21	3IUCHD	Shepshed East	94	95	113	2.8	1.2	2.1
22	3IUCHE	Shepshed West	99	107	120	3.5	1.1	2.3
23	3IUCHF	Sileby	155	153	168	4.5	2.0	3.3
24	3IUCHG	Syston East	97	103	124	3.5	1.7	2.6
25	3IUCHH	Syston West	109	119	151	3.6	1.7	2.7
26	3IUCHJ	The Wolds	29	28	26	2.3	0.8	1.6
27	3IUCHK	Thurmaston	192	193	253	4.7	1.9	3.4
28	3IUCHL	Wreake Villages	29	30	24	2.5	0.7	1.6
		Charnwood Borough	2,785	2,923	3,220	3.4	1.5	2.6
		*Loughborough including Hathern	1256	1339	1399	3.8	1.7	2.9

These figures are suppressed as value is 1 or 2.

Market Town geographies defined by Leicestershire County Council and figures calculated using ONS Claimant Count (JSA) figures and denominators.

Source: Office for National Statistics

If you require further information please contact Joelle Bradly, Policy, Performance & Research, Chief Executive's Department, Leicestershire County Council on 0116 3055883.

**Claimant Count (JSA) Ward Data
April 2010**

Harborough District

Code	Wards (resident-based proportions)	Total	Last month	Last year	Male	Female	Total
					%	%	%
1	3IUDGD Billesdon	13	16	10	1.7	0.8	1.2
2	3IUDGE Bosworth	26	30	35	2.5	0.9	1.8
3	3IUDGF Broughton Astley - Astley	22	21	33	2.1	0.9	1.5
4	3IUDGG Broughton Astley - Broughton	30	29	28	2.5	0.8	1.7
5	3IUDGH Broughton Astley - Primethorpe	21	25	19	2.8	0.7	1.8
6	3IUDGJ Broughton Astley - Sutton	30	26	43	2.8	1.6	2.3
7	3IUDGK Dunton	21	24	20	1.7	1.2	1.5
8	3IUDGL Fleckney	66	71	90	2.5	1.7	2.2
9	3IUDGM Glen	38	37	51	1.9	1.2	1.6
10	3IUDGN Kibworth	66	74	78	2.6	1.0	1.8
11	3IUDGP Lubenham	19	21	22	1.0	1.1	1.0
12	3IUDGQ Lutterworth Brookfield	19	24	35	1.4	1.2	1.3
13	3IUDGR Lutterworth Orchard	24	24	33	2.5	1.2	1.9
14	3IUDGS Lutterworth Springs	39	45	41	4.0	1.8	3.0
15	3IUDGT Lutterworth Swift	40	43	52	3.2	1.9	2.6
16	3IUDGU Market Harborough - Great Bowden*	102	107	145	3.4	1.3	2.4
17	3IUDGW Market Harborough - Little Bowden*	46	50	64	1.6	1.6	1.6
18	3IUDGX Market Harborough - Logan*	31	28	74	1.9	0.6	1.3
19	3IUDGY Market Harborough - Welland*	90	100	123	3.9	1.4	2.7
20	3IUDGZ Misterton	21	20	24	2.0	0.7	1.4
21	3IUDHA Nevill	21	25	22	2.4	0.8	1.7
22	3IUDHB Peatling	18	15	21	1.5	1.1	1.3
23	3IUDHC Thurnby and Houghton	96	110	88	3.9	1.5	2.8
24	3IUDHD Tilton	13	11	18	1.4	0.7	1.1
25	3IUDHE Ullesthorpe	22	27	29	2.1	1.0	1.6
	Harborough District	934	1003	1,198	2.5	1.2	1.9
	* Market Harborough	269	285	406	2.9	1.3	2.1

These figures are suppressed as value is 1 or 2.

Market Town geographies defined by Leicestershire County Council and figures calculated using ONS Claimant Count (JSA) figures and denominators.

Source: Office for National Statistics

If you require further information please contact Joelle Bradly, Policy, Performance & Research, Chief Executive's Department, Leicestershire County Council on 0116 3055883.

**Claimant Count (JSA) Ward Data
April 2010**

Hinckley & Bosworth Borough

Code	Wards (resident-based proportions)	Total	Last month	Last year	Male %	Female %	Total %
1	31UEFU Ambien	32	36	42	2.0	0.9	1.5
2	31UEFW Barlestone Nailstone & Osbaston	34	37	52	2.4	0.8	1.6
3	31UEFX Barwell	248	252	238	6.0	2.6	4.4
4	31UEFY Burbage St. Catherines & Lash Hill*	123	117	104	4.8	2.6	3.8
5	31UEFZ Burbage Sketchley and Stretton*	91	94	120	2.1	1.1	1.6
6	31UEGA Cadeby Carlton & Market Bosworth	24	30	36	2.0	0.3	1.2
7	31UEGB Earl Shilton*	282	282	290	6.5	3.1	4.9
8	31UEGC Groby	85	87	86	3.0	1.0	2.0
9	31UEGD Hinckley Castle*	166	174	181	5.2	2.4	3.9
10	31UEGE Hinckley Clarendon*	165	181	206	4.0	1.7	2.9
11	31UEGF Hinckley De Montfort*	182	188	204	3.9	2.2	3.1
12	31UEGG Hinckley Trinity*	180	172	199	6.1	2.5	4.4
13	31UEGH Markfield Stanton and Fieldhead	62	68	72	2.5	1.2	1.9
14	31UEGJ Newbold Verdon with Desford & Peckleton	93	103	131	2.6	1.1	1.9
15	31UEGK Ratby Bagworth and Thornton	99	110	129	3.0	1.8	2.4
16	31UEGL Twycross & Witherley with Sheepy	24	27	29	1.5	1.2	1.3
	Hinckley & Bosworth District	1,890	1,958	2,119	3.9	1.8	2.9
	* Hinckley (inc. Burbage & Earl Shilton)	1189	1208	1304	4.6	2.2	3.5

These figures are suppressed as value is 1 or 2.

Market Town geographies defined by Leicestershire County Council and figures calculated using ONS Claimant Count (JSA) figures and denominators.

Source: Office for National Statistics

If you require further information please contact Joelle Bradly, Policy, Performance & Research, Chief Executive's Department, Leicestershire County Council on 0116 3055883.

**Claimant Count (JSA) Ward Data
April 2010**

			Leicester City					
Code	Wards (resident-based proportions)		Total	Last month	Last year	Male %	Female %	Total %
1	00FNNF	Abbey	685	680	691	12.1	4.5	8.4
2	00FNNG	Aylestone	344	355	348	7.7	2.5	5.1
3	00FNNH	Beaumont Leys	859	855	784	11.7	4.5	8.1
4	00FNNJ	Belgrave	448	462	450	7.9	4.7	6.3
5	00FNNK	Braunstone Park & Rowley Fields	818	835	812	11.7	4.2	7.9
6	00FNNL	Castle	863	868	790	8.6	2.9	5.8
7	00FNNM	Charnwood	645	655	604	12.2	5.2	8.7
8	00FNNN	Coleman	580	585	559	9.6	4.3	7.0
9	00FNNP	Evington	284	292	267	6.1	3.5	4.9
10	00FNNQ	Eyres Monsell	525	526	491	11.5	4.8	8.1
11	00FNNR	Fosse	458	478	457	7.7	3.5	5.8
12	00FNNS	Freemen	591	608	559	12.8	4.2	8.4
13	00FNNT	Humberstone and Hamilton	527	544	457	7.9	3.7	5.9
14	00FNNU	Knighon	296	300	315	4.5	1.8	3.2
15	00FNNW	Latimer	420	411	382	5.9	4.7	5.3
16	00FNNX	New Parks	864	871	751	13.0	5.1	9.1
17	00FNNY	Rushey Mead	507	490	443	6.2	3.7	5.0
18	00FNNZ	Spinney Hills	1165	1172	1085	12.7	4.5	8.7
19	00FNPA	Stoneygate	778	781	765	9.0	3.7	6.4
20	00FNPB	Thurncourt	336	357	337	8.4	3.6	6.0
21	00FNPC	Westcotes	463	479	433	9.2	3.6	6.6
22	00FNPD	Western Park	347	341	306	7.8	3.0	5.5
		Leicester	12,803	12,945	12,086	9.2	3.9	6.7

These figures are suppressed as value is 1 or 2.

Source: Office for National Statistics

If you require further information please contact Joelle Bradly, Policy, Performance & Research, Chief Executive's Department, Leicestershire County Council on 0116 3055883.

**Claimant Count (JSA) Ward Data
April 2010**

Melton Borough

Code	Wards (resident-based proportions)	Melton Borough			Male	Female	Total
		Total	Last month	Last year	%	%	%
1	3IUGFT Asfordby	59	61	72	3.9	1.9	2.9
2	3IUGFU Bottesford	37	41	49	2.3	1.3	1.8
3	3IUGFW Croxton Kerrial	16	18	24	1.3	1.5	1.4
4	3IUGFX Frisby-on-the-Wreake	16	16	20	1.8	1.2	1.5
5	3IUGFY Gaddesby	14	13	24	2.3	#	1.5
6	3IUGFZ Long Clawson and Stathern	33	34	53	1.5	1.1	1.3
7	3IUGGA Melton Craven*	77	70	74	4.2	2.8	3.5
8	3IUGGB Melton Dorian*	84	80	111	3.4	1.6	2.5
9	3IUGGC Melton Egerton*	106	112	111	6.7	2.4	4.6
10	3IUGGD Melton Newport*	74	75	83	3.7	1.5	2.7
11	3IUGGE Melton Sysonby*	82	78	115	3.6	1.3	2.5
12	3IUGGF Melton Warwick*	77	78	77	4.8	2.3	3.6
13	3IUGGG Old Dalby	27	28	24	2.6	1.7	2.2
14	3IUGGH Somerby	16	16	23	1.7	1.2	1.5
15	3IUGGJ Waltham-on-the-Wolds	11	14	12	1.2	1.1	1.1
16	3IUGGK Wymondham	27	29	27	2.4	3.0	2.7
	Melton Borough	756	763	899	3.3	1.7	2.5
	* Melton Mowbray	500	493	571	4.2	1.9	3.1

These figures are suppressed as value is 1 or 2.

Market Town geographies defined by Leicestershire County Council and figures calculated using ONS Claimant Count (JSA) figures and denominators.

Source: Office for National Statistics

If you require further information please contact Joelle Bradly, Policy, Performance & Research, Chief Executive's Department, Leicestershire County Council on 0116 3055883.

**Claimant Count (JSA) Ward Data
April 2010**

North West Leicestershire District

		Total	Last month	Last year	Male %	Female %	Total %
Code	Wards (resident-based proportions)						
1	3IUHFZ Appleby	23	23	34	2.0	1.5	1.8
2	3IUHGA Ashby Castle*	22	18	28	1.6	0.0	1.3
3	3IUHGB Ashby Holywell*	97	89	116	4.6	1.8	3.3
4	3IUHGC Ashby Ivanhoe*	70	73	83	3.8	1.4	2.7
5	3IUHGD Bardon**	41	38	64	2.6	1.3	2.0
6	3IUHGE Breedon	22	20	25	2.1	0.9	1.5
7	3IUHGF Castle Donington	132	140	153	4.3	1.6	3.1
8	3IUHGG Coalville**	145	158	164	6.3	2.7	4.6
9	3IUHGH Greenhill**	224	232	219	7.6	3.2	5.5
10	3IUHGJ Hugglescote**	72	92	95	3.4	1.4	2.4
11	3IUHGK Ibstock and Heather	129	143	144	4.2	1.6	3.0
12	3IUHGL Kegworth and Whatton	65	64	62	3.2	1.2	2.3
13	3IUHGM Measham	96	102	114	4.2	1.7	3.0
14	3IUHGN Moira	68	64	84	2.8	1.9	2.4
15	3IUHGP Oakthorpe and Donisthorpe	50	49	44	4.2	1.7	3.0
16	3IUHGQ Ravenstone and Packington	28	31	37	2.3	0.0	1.9
17	3IUHGR Snibston**	106	98	124	4.1	2.3	3.3
18	3IUHGS Thringstone**	74	82	82	3.2	2.3	2.8
19	3IUHGT Valley	83	93	100	4.1	1.9	3.1
20	3IUHGU Whitwick**	120	111	152	3.6	2.3	3.0
NW Leicestershire District		1,667	1,720	1,924	4.0	1.9	3.0
* Ashby de la Zouch		189	180	227	3.7	1.5	2.7
** Coalville		782	811	900	4.7	2.3	3.6

These figures are suppressed as value is 1 or 2.

Market Town geographies defined by Leicestershire County Council and figures calculated using ONS Claimant Count (JSA) figures and denominators.

Source: Office for National Statistics

If you require further information please contact Joelle Bradly, Policy, Performance & Research, Chief Executive's Department, Leicestershire County Council on 0116 3055883.

**Claimant Count (JSA) Ward Data
April 2010**

Oadby & Wigston Borough

Code	Wards (resident-based proportions)	Total	Last month	Last year	Male	Female	Total
					%	%	
1	31UJFL Oadby Brocks Hill*	60	63	63	3.2	2.3	2.8
2	31UJFM Oadby Grange*	54	61	53	1.4	0.9	1.2
3	31UJFN Oadby St. Peter's*	107	108	92	7.3	2.8	5.0
4	31UJFP Oadby Uplands*	73	78	101	3.6	2.1	2.9
5	31UJFQ Oadby Woodlands*	69	69	58	2.9	1.7	2.3
6	31UJFR South Wigston	228	238	255	7.1	2.7	4.9
7	31UJFS Wigston All Saints**	106	109	104	4.0	1.8	3.0
8	31UJFT Wigston Fields**	161	173	163	6.2	2.2	4.2
9	31UJFU Wigston Meadowcourt**	118	101	104	3.9	1.7	2.9
10	31UJFW Wigston St. Wolstan's**	99	102	101	3.8	1.4	2.7
	Oadby & Wigston Borough	1,075	1,102	1,094	4.2	1.9	3.1
	* Oadby	363	379	367	3.3	1.8	2.6
	** Wigston	484	485	472	4.5	1.8	3.2

These figures are suppressed as value is 1 or 2.

Market Town geographies defined by Leicestershire County Council and figures calculated using ONS Claimant Count (JSA) figures and denominators.

Source: Office for National Statistics

If you require further information please contact Joelle Bradly, Policy, Performance & Research, Chief Executive's Department, Leicestershire County Council on 0116 3055883.

**Claimant Count (JSA) Ward Data
April 2010**

			Rutland					
Code	Wards (resident-based proportions)		Total	Last month	Last year	Male %	Female %	Total %
1	00FPMS	Braunston and Belton	14	15	13	1.9	2.0	1.9
2	00FPMT	Cottesmore	19	20	31	1.0	1.0	1.0
3	00FPMU	Exton	17	20	21	1.3	1.2	1.3
4	00FPMW	Greetham	11	14	21	0.5	1.5	0.8
5	00FPMX	Ketton	16	23	24	1.5	0.6	1.1
6	00FPMY	Langham	18	17	12	3.9	#	2.3
7	00FPMZ	Lyddington	9	8	8	1.8	#	1.2
8	00FPNA	Martinsthorpe	10	9	10	2.5	#	1.5
9	00FPNB	Normanton	23	29	30	1.1	1.4	1.2
10	00FPNC	Oakham North East*	39	43	35	2.8	1.2	2.0
11	00FPND	Oakham North West*	50	48	29	3.2	2.1	2.7
12	00FPNE	Oakham South East*	17	19	19	1.9	0.6	1.3
13	00FPNF	Oakham South West*	30	28	38	2.9	1.6	2.3
14	00FPNG	Ryhall and Casterton	30	36	32	2.2	1.1	1.7
15	00FPNH	Uppingham	41	44	49	2.1	0.6	1.4
16	00FPNJ	Whissendine	18	18	17	2.2	2.3	2.2
		Rutland	362	391	389	1.9	1.1	1.6
		*Oakham	136	138	121	2.7	1.4	2.1

These figures are suppressed as value is 1 or 2.

Market Town geographies defined by Leicestershire County Council and figures calculated using ONS Claimant Count (JSA) figures and denominators.

Source: Office for National Statistics

If you require further information please contact Joelle Bradly, Policy, Performance & Research, Chief Executive's Department, Leicestershire County Council on 0116 3055883.