

Unemployment Bulletin

August 2009



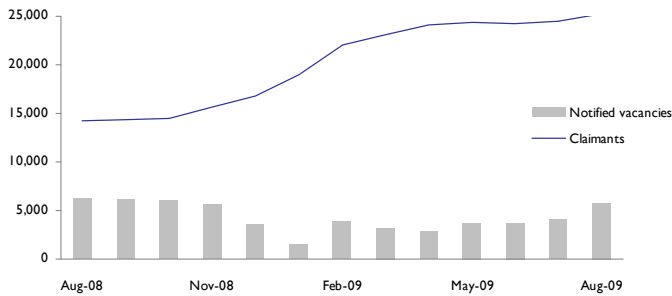
Recession Summary

This additional front page provides a monthly snapshot of the economic downturn at a local level. JSA claimants, vacancies and NEET data are used to exemplify recent change and trends over the past 12 months. Following tables have also been adapted to include monthly and annual comparisons.

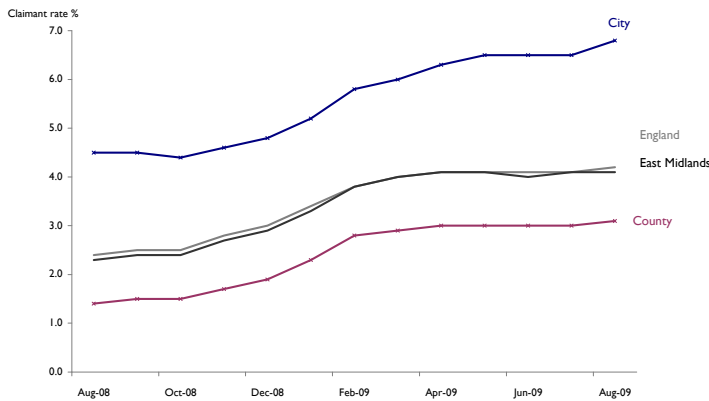
Key points

- There were 25,257 people claiming JSA benefits in the sub-region in August 2009; compared to 24,499 in July 2009 and 14,181 in August 2008.
- The JSA claimant numbers in August 2009 increased by 566 in the City to a rate of 6.8%. In the County, claimants increased by 192 to a rate of 3.1%. Rates decreased this month in Melton by 0.2% points. The largest rate increase was in Hinckley (+78 claimants).
- In the City, Fosse ward saw the largest monthly increase in JSA rates (+ 56 claimants). Knighton was the only ward in the City to see a rate decreases this month (-3 claimants).
- In the sub-region, there were 5,827 notified vacancies in August compared to 4,125 the previous month. There were 4,252 unfilled live vacancies in August. This is a ratio of 5.9 claimants per unfilled vacancy, compared to 6.9 claimants per vacancy last month.
- NEET rates increased again this month in both City and County. 10.1% of 16-18 year olds in the City and 5.8% in the County were Not in Education, Employment or Training in August 2009. These rates are lower than rates for August last year although further seasonal increases are to be expected in September.

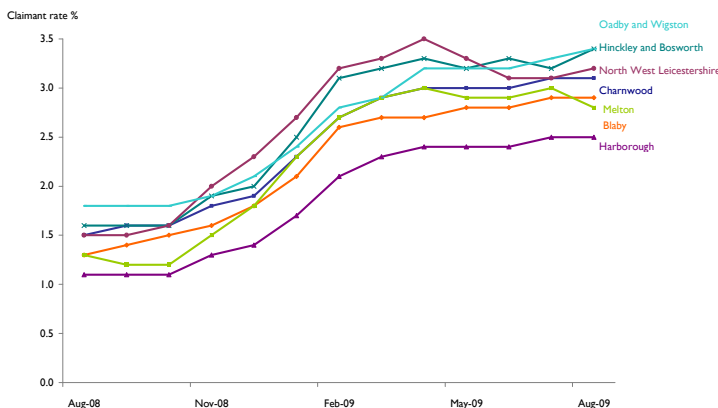
JSA claimants and new notified vacancies in Leicester and Leicestershire August 08 to August 09



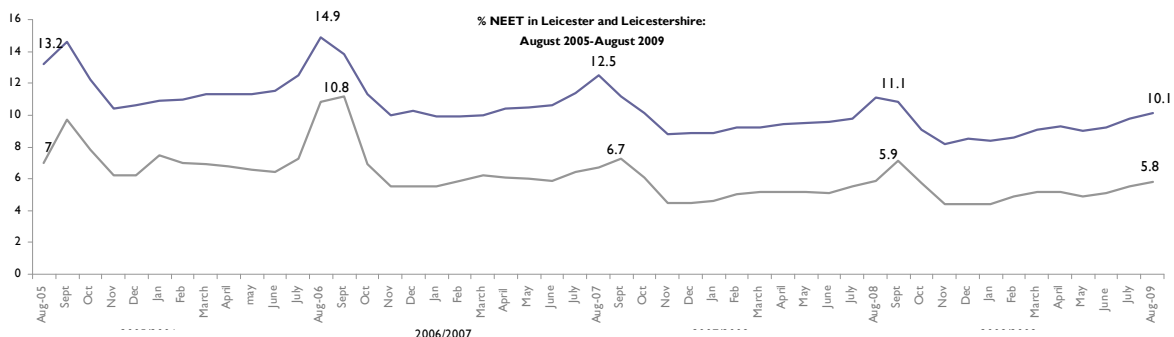
JSA Claimant Rate August 2008 to August 2009



JSA claimant rates in Leicestershire districts August 2008 to August 2009



% NEET in Leicester and Leicestershire: August 2005-August 2009



Unemployment Bulletin

August 2009



Introduction

The Unemployment Bulletin provides a monthly update of the latest unemployment and benefit data for Leicester and Leicestershire. The data is sourced from Nomis (www.nomisweb.co.uk) which contains data from the Office for National Statistics, the Department of Work and Pensions and other official sources. Some figures have been calculated by Leicestershire County Council and where this is the case it is stated in the source.

There are a number of ways of measuring unemployment and this bulletin mainly focuses on the Claimant Count which is a measure of the number or proportion of people receiving Job Seekers Allowance (JSA) and National Insurance Credits at Jobcentre Plus local offices. This is not an official measure of unemployment but it is the only indicative statistic available for areas smaller than Local Authorities.

Official estimates of unemployment in the UK are obtained from the Labour Force Survey (LFS) using the internationally agreed International Labour Organisation (ILO) definition. The ILO definition is based on the number of people without jobs who are looking for work and are available to start work (and includes people whether or not they are eligible to receive unemployment related benefits). The LFS unemployment figures which are subject to sampling differences are not reliable at small areas. The Claimant Count is released on a monthly basis and is available down to ward level, so is used as a more current indicator of unemployment levels. Using the two sources together provides a more comprehensive picture of the labour market.

There is a large degree of overlap between the Claimant Count and Unemployment (LFS ILO definition) although the latter figures are generally higher. People who are not claimants can appear among the unemployed if they are not entitled to unemployment related benefits. Similarly, claimants of unemployment related benefits may not appear in the measure of unemployment if they stated that they are not seeking or are not available to start work.

Tables 1 to 7 use Claimant Count data and Table 8 shows the Unemployment (LFS ILO definition) figures.

Table 1: Resident-Based Claimant Count (JSA) Proportions: August 2009

Area	Claimant Count Proportion (working age)			Total Claimant Count	Change since last month	Change since last year	Previous months Proportion (change)	Previous years Proportion (change)
	Total	Male	Female					
Leicester Shire	4.3%	5.8%	2.6%	25,257	758	7,894	4.2%(0.1)	2.4%(1.9)
Leicestershire County	3.1%	4.1%	1.9%	12,224	192	4,640	3.0%(0.1)	1.4%(1.7)
Leicester City	6.8%	9.5%	4.0%	13,033	566	3,254	6.5%(0.3)	4.5%(2.3)
Rutland	1.8%	2.1%	1.4%	397	17	142	1.7%(0.1)	0.8%(1.0)
East Midlands	4.1%	5.7%	2.4%	112,641	1,700	36,094	4.1%(0.0)	2.3%(1.8)
UK	4.2%	5.9%	2.4%	1,602,189	29,050	493,089	4.2%(0.0)	2.5%(1.7)

Source: Office for National Statistics (Nomis)

Note: Leicester Shire comprises the areas of Leicestershire County and Leicester City only.

National Statistics will release the September 2009 unemployment figures on Wednesday 14th October 2009.

Archived Unemployment Bulletins and other reports produced by Leicestershire County Council are available on the Leicestershire Statistics and Research Online website, www.lsr-online.org

Table 2: Resident-Based Claimant Count (JSA) Proportions: August 2009.

Districts	Claimant Count Proportion (working age)	Total Claimant Count	Total last month	Total last year	Previous months Proportion (change)	Previous years Proportion (change)
Oadby & Wigston	3.4%	1,167	1,150	600	3.3%(0.1)	1.8%(1.6)
Hinckley & Bosworth	3.4%	2,176	2,098	1,014	3.2%(0.2)	1.6%(1.8)
NW Leicestershire	3.2%	1,747	1,738	812	3.1%(0.1)	1.5%(1.7)
Charnwood	3.1%	3,385	3,298	1,598	3.1%(0.0)	1.5%(1.6)
Blaby	2.9%	1,666	1,638	759	2.9%(0.0)	1.3%(1.6)
Melton	2.8%	842	890	386	3.0%(-0.2)	1.3%(1.5)
Harborough	2.5%	1,241	1,220	518	2.5%(0.0)	1.1%(1.4)

Source: Office for National Statistics (Nomis)

Table 3: Resident-Based Claimant Count (JSA) Proportions: in Market Towns; August 2009.

Market Towns	Claimant Count Proportion (working age)	Total Claimant Count	Previous months Proportion (change)	Previous years Proportion (change)
Hinckley (inc. Burbage & Earl Shilton)	6.9%	1,352	6.6%(0.3)	2.0%(4.9)
Melton Mowbray	3.5%	565	3.7%(-0.2)	1.9%(1.6)
Coalville	3.5%	780	3.6%(-0.1)	1.8%(1.7)
Wigston	3.3%	496	3.3%(0.0)	1.7%(1.6)
Loughborough (including Hathern)	3.1%	3,385	3.2%(-0.1)	1.6%(1.5)
Market Harborough	3.1%	394	3.1%(0.0)	1.4%(1.7)
Oadby	2.8%	403	2.7% (0.1)	1.3%(1.5)
Ashby de la Zouch	2.7%	190	2.7%(0.0)	1.4%(1.3)
Oakham	1.8%	397	2.0%(-0.2)	0.7%(1.1)

Source: Office for National Statistics (Nomis); Market Town geographies defined by Leicestershire County Council and figures calculated using ONS Claimant Count (JSA) figures and denominators

Table 4: Claimant Count (JSA) by Age and Duration; August 2009.

Area	18-24 years old				Over 25 years old			
	Up to 6 months	6-12 months	13-18 months	Over 18 months	Up to 6 months	6-12 months	13-18 months	Over 18 months
Blaby	440	100	5	0	750	270	65	25
Charnwood	850	225	5	5	1,525	545	140	65
Harborough	320	65	0	0	605	185	45	20
Hinckley & Bosworth	520	120	5	0	1,010	385	90	40
Melton	195	55	5	0	390	150	30	15
NW Leicestershire	435	105	5	5	800	290	80	35
Oadby & Wigston	305	70	5	0	520	175	70	20
Leicester City	3,085	740	20	10	5,245	2,360	1,010	495
Leicestershire County	3,065	735	30	10	5,600	2,000	520	220
Rutland	95	20	0	0	205	55	10	10
Leicester Shire	6,150	1,475	50	20	10,840	4,355	1,535	715

Source: Office for National Statistics (Nomis) Note: Figures are rounded to the nearest 5.

Claimant Count (JSA) by Ethnicity

JSA benefit data have been published by the Office for National Statistics (ONS) for many years as a key labour market indicator. In November 2006 ONS published JSA claimant data by ethnicity for the first time. The data is available for the detailed ethnic groups down to Local Authority level and is backdated to April 2005.

JSA claimant data by ethnicity has been included in Tables 5, 6, and 7 of this bulletin. The JSA data by ethnicity used in these table is a month in arrears of the other Claimant Count data in the other tables in the bulletin.

For more information, please see; www.nomisweb.co.uk/articles/news/files/DWP_Ethnicity_JSA.pdf

Table 5: Claimant County (JSA) by Ethnicity; July 2009.

Area	White	Mixed	Black or Black British	Asian or Asian British	Chinese or Other Ethnic Group	'Non White'	Prefer not to say / Unknown
Blaby	1,370	25	25	105	15	170	95
Charnwood	2,725	50	25	260	55	385	190
Harborough	1,085	10	5	30	5	45	90
Hinckley & Bosworth	1,745	10	5	20	5	45	305
Melton	850	5	5	5	0	15	25
NW Leicestershire	1,665	5	0	0	5	15	60
Oadby & Wigston	805	25	25	235	5	285	65
Leicester City	6,580	320	1,055	3,455	330	5,160	730
Leicestershire County	10,245	125	85	655	90	960	825
Leicester Shire	16,830	445	1,140	4,115	420	6,115	1,555
East Midlands	91,225	1,780	3,790	6,270	1,195	13,040	6,405
Great Britain	1,201,810	23,145	80,075	77,465	25,595	206,280	108,815

Note: Figures are rounded to the nearest 5.

Sources: Office for National Statistics (Nomis)

Table 6: Resident-based Claimant Count (JSA) Proportions by Ethnicity; July 2009.

Area	White	Mixed	Black or Black British	Asian or Asian British	Chinese or Other Ethnic Group	'Non White'
Blaby	1.6%	2.3%	3.1%	2.6%	2.5%	2.6%
Charnwood	1.9%	2.6%	1.8%	2.4%	1.9%	2.3%
Harborough	1.4%	1.3%	1.3%	1.5%	1.3%	1.3%
Hinckley & Bosworth	1.8%	1.1%	1.3%	0.8%	1.0%	1.0%
Melton	1.8%	1.7%	2.5%	0.8%	0.0%	1.2%
NW Leicestershire	1.9%	0.7%	0.0%	0.0%	1.3%	0.6%
Oadby & Wigston	1.7%	3.1%	3.1%	3.1%	0.8%	2.9%
Leicester City	3.7%	4.5%	8.5%	4.1%	8.7%	4.8%
Leicestershire County	1.8%	2.0%	2.0%	2.3%	1.7%	2.1%
Leicester Shire	2.2%	3.3%	6.8%	3.7%	4.6%	4.0%
East Midlands	2.3%	3.2%	6.5%	3.1%	3.1%	3.7%

Source: Office for National Statistics (Nomis). Proportions calculated by Leicestershire County Council using ONS mid-2005 experimental estimates of population by ethnic group, published October 2007

Table 7: Claimant Count (JSA) by Ethnicity, Gender and Age; July 2009.

	Total	Previous month	Previous year	Male				Female			
				Aged <18	Aged 18-24	Aged 25-49	Aged 50+	Aged < 18	Aged 18-24	Aged 25-49	Aged 50+
Leicester Shire											
'White'	16,830	16,645	7,695	55	3,535	6,640	2,235	40	1,515	1,985	825
'Non-white'	6,125	5,975	3,815	10	1,015	2,500	660	5	605	975	355
Leicester City											
'White'	6,585	6,495	3,805	30	1,385	2,770	775	30	595	740	260
'Non-white'	5,155	5,065	3,375	5	845	2,155	555	0	500	790	305
Leicestershire County											
'White'	10,240	10,145	3,890	25	2,150	3,865	1,460	10	920	1,245	565
'Non-white'	955	900	440	0	170	345	100	0	110	185	45

Source: Office for National Statistics (Nomis)

Unemployment: International Labour Organisation (ILO) Definition

Official estimates of unemployment in the UK are obtained from the Labour Force Survey (LFS) using the internationally agreed International Labour Organisation (ILO) definition. The ILO definition is based on the number of people without jobs who are looking for and available to start work. The LFS unemployment figures which are subject to sampling differences are not available for smaller areas. The Claimant Count is released on a monthly basis and is available down to ward level, so is used as a more current indicator of unemployment levels.

Table 8: Unemployment Rates: ILO Definition; January 2008 - December 2008

Area	January 2008 - December 2008		January 2007 - December 2007	
	ILO Unemployment Rate (working age)	Total Persons ILO Unemployed	ILO Unemployment Rate (working age)	Total Persons ILO Unemployed
United Kingdom	5.9%	1,741,100	5.3%	1,565,200
East Midlands	6.0%	132,700	5.1%	111,100
Leicester Shire	7.3%	34,400	5.0%	23,600
Leicester City	13.2%	18,100	10.0%	14,000
Leicestershire County	4.8%	16,400	1.0%	9,600

Source: Labour Force Survey/Annual Population Survey, Office for National Statistics (Nomis)

Other Department for Work and Pensions Benefits Statistics

Job Seekers Allowance is one of a number of types of benefit which is related to worklessness, and recipients of this benefit constitute the most visible group of people who are out of work. However, many people have been diverted away from Job Seekers Allowance on to other benefits, the largest number being onto Incapacity Benefit. Nationally, the number of people claiming Incapacity Benefit is over three times the number of people out of work and claiming JSA.

The government recently published a Green Paper on welfare reform in which it is argued that to meet the goal of reaching a UK employment rate of 80%, more people on inactive benefits must be moved into work, particularly those who have been on benefits for a long time.

One method of classifying benefit claimants is by breaking them down into statistical groups. This presents the main reason why an individual is claiming benefit. Benefits are arranged hierarchically and claimants are assigned to the top most benefit which they receive. In this way each claimant only appears once, even though they may claim more than one benefit - the total number of working-age people who are claiming one or more key benefits is often used as a proxy for worklessness.

These figures are provided by the Department for Work and Pensions and are updated quarterly.

Table 9: Working-age people claiming one or more key DWP benefit by duration; February 2009

Area	Number	All benefits			Duration (proportion of all claimants)				
		Rate	Previous year number	Previous year rate	<6mths	6mths - 1yr	1yr - 2yrs	2yrs - 5yrs	+5yrs
Blaby	5,360	9.4%	4,360	7.7%	32%	8%	8%	15%	37%
Charnwood	10,850	10.1%	9,100	8.6%	31%	9%	9%	16%	35%
Harborough	3,970	8.0%	3,240	6.6%	32%	8%	8%	14%	37%
Hinckley & Bosworth	7,150	11.0%	5,880	9.1%	33%	8%	9%	15%	35%
Melton	2,850	9.5%	2,180	7.3%	35%	8%	8%	13%	35%
NW Leicestershire	7,060	12.7%	6,050	11.0%	29%	8%	9%	15%	39%
Oadby and Wigston	3,560	10.4%	3,030	8.9%	29%	10%	9%	15%	36%
Leicester City	40,050	21.0%	35,770	19.0%	27%	10%	11%	16%	37%
Leicestershire County	40,790	10.2%	33,820	8.6%	32%	8%	9%	15%	36%
Rutland	1,540	6.8%	1,270	5.5%	31%	7%	10%	14%	38%
East Midlands	409,180	15.0%	355,380	13.1%	28%	9%	9%	15%	39%
Great Britain	5,784,320	15.7%	5,156,000	14.1%	27%	9%	9%	15%	40%

Source: Department of Work and Pension (Nomis)

Table 10: Benefit Claimants by Statistical Group - Main reason for claiming benefit; February 2009

Statistical group	East Midlands		Leicester City		Leicestershire County	
	Number	Rate	Number	Rate	Number	Rate
Employment and Support Allowance & Incapacity Benefits	178,570	6.5	15,940	8.3	16,570	4.2
Job Seeker	105,420	3.9	11,280	5.9	11,160	2.8
Lone Parent	47,480	1.7	6,070	3.2	3,940	1.0
Carer	31,020	1.1	2,930	1.5	3,410	0.9
Disabled	28,420	1.0	2,040	1.1	3,470	0.9
Others on income related benefit	11,640	0.4	1,340	0.7	1,240	0.3
Bereaved	6,630	0.2	450	0.2	1,000	0.3
Total	409,180	15.0	40,050	21.0	40,790	10.2

Source: Department of Work and Pension (Nomis)

Note: Benefits are arranged hierarchically and claimants are assigned to the top most benefit they receive. Each claimant appears once only, even though some claim more than one benefit, permitting the estimation of the total number of people claiming one or more benefits. The Statistical Group hierarchy is a) Jobseeker b) ESA & Incapacity benefits c) Lone parents d) Carers e) Other income-related benefits f) Disabled g) Bereaved h) Housing Benefit i) receiving State Pension only. Thus a person who is a lone parent and receives Incapacity Benefit would be classified as receiving incapacity benefits. This is only one of the possible ways in which claimants could be classified and alternative classifications are possible.

For more information about DWP statistics and research www.dwp.gov.uk/asd/data_guide.asp

Definitions

Claimant Count - the count of claimants of unemployment related benefits is based on the administrative records of people claiming these benefits. Since October 1996 this has been the number of people claiming Job Seekers Allowance (JSA). The publication of claimant count figures is normally five weeks after the date to which they refer. The claimant count is accurate down to very small geographic areas and is unaffected by sampling variability since it is a 100% count. This means it can be used as an indicator of those without work down to small areas.

Resident-based Claimant Count Proportions - express the number of claimants resident in an area as a percentage of the working age population resident in that area. Claimant count rates can also be expressed as a proportion of the workforce jobs in an area, however in smaller areas using workforce job-based rates can cause distortions in the rates caused by commuting patterns. Using resident-based proportions avoids this distortion.

Unemployment (LFS ILO definition) - The definition of unemployment is internationally agreed and recommended by the International Labour Organisation (ILO) - an agency of the United Nations. Many countries use this definition. By this definition unemployed people are:

- without a job, want a job, have actively sought work in the last 4 weeks and are available to start work in the next 2 weeks, or
- out of work, have found a job and are waiting to start it in the next 2 weeks

Unemployment Rate (LFS ILO definition) - expresses the number of unemployed people resident in an area as a percentage of the economically active working age population resident in that area.

Labour Force Survey - The Labour Force Survey is a random sample survey which is carried out throughout the UK. It is conducted every three months using around 53,000 households. The survey collects information about the personal circumstances and work of everyone living in these households. The Office for National Statistics (ONS) uses the Labour Force Survey as its source for unemployment data. Unemployment is measured through questions asked in the survey and not by interviewing everybody in the country. Answers are then weighted to represent everyone. As with any sample survey there is sampling variability and this is high for areas below regional level. Therefore, the figures are not reliable for small areas. Each month the ONS releases statistics on the number of people who are unemployed in the United Kingdom for the latest available 3-month rolling period.

Economically Active - people aged 16 or over who are either in employment or are unemployed (LFS ILO definition)

Economically Inactive - people aged 16 or over who are neither in employment nor unemployed (LFS ILO definition) - e.g. they do not have a job and do not want a job. This group includes, for example, those who are looking after the family and/or home or retired.

Working Age Population - Working age is defined as 16-64 for males and 16-59 for females. The working age population figures are derived from mid-year 2006 population estimates.

Benefit Claimants Statistical Group - Benefits are arranged hierarchically and claimants are assigned to the top most benefit they receive. Each claimant appears once only, even though some claim more than one benefit, permitting the estimation of the total number of people claiming one or more benefits. The Statistical Group hierarchy is a) Jobseeker b) Incapacity benefits c) Lone parents d) Carers e) Other income-related benefits f) Disabled g) Bereaved h) Housing Benefit i) receiving State Pension only. Thus a person who is a lone parent and receives Incapacity Benefit would be classified as receiving incapacity benefits. The total number of working-age people who are claiming one or more key benefits is often used as a proxy for worklessness. This is only one of the possible ways in which claimants could be classified and alternative classifications are possible.

For further information on unemployment statistics please refer to the document entitled 'How exactly is unemployment measured?' which is produced by the Office for National Statistics:

www.statistics.gov.uk/downloads/theme_labour/unemployment.pdf

For further information about Department of Work and Pensions statistics and research:

www.dwp.gov.uk/asd/data_guide.asp

For enquiries about the Unemployment Bulletin please contact Joelle Bradly on 0116 305 7341

**Claimant Count (JSA) Ward Data
August 2009**

Blaby District

Code	Wards (resident-based proportions)	Blaby District					
		Total	Last month	Last year	Male %	Female %	Total %
1	3IUBFY Blaby South	102	87	42	5.6	1.6	3.7
2	3IUBFZ Cosby with South Whetstone	61	60	30	2.4	1.5	2.0
3	3IUBGA Countesthorpe	93	91	45	2.8	1.7	2.2
4	3IUBGB Croft Hill	35	36	15	3.2	2.0	2.6
5	3IUBGC Ellis	85	79	38	4.2	1.1	2.7
6	3IUBGD Enderby and St. John's	94	95	44	5.5	1.6	3.6
7	3IUBGE Fairstone	69	76	33	3.5	1.8	2.7
8	3IUBGF Forest	98	97	42	2.8	1.7	2.3
9	3IUBGG Millfield	60	62	30	6.4	3.4	5.0
10	3IUBGH Muxloe	58	51	27	2.6	2.3	2.5
11	3IUBGJ Narborough and Littlethorpe	102	101	38	4.2	1.9	3.1
12	3IUBGK Normanton	29	28	10	2.0	1.6	1.8
13	3IUBGL North Whetstone	96	94	36	3.7	2.1	2.9
14	3IUBGM Pastures	68	72	34	2.5	1.9	2.2
15	3IUBGN Ravenhurst and Fosse	203	176	89	6.2	2.7	4.6
16	3IUBGP Saxondale	144	135	68	3.6	2.0	2.9
17	3IUBGQ Stanton and Flamville	120	122	64	3.2	2.3	2.8
18	3IUBGR Winstanley	149	141	74	4.4	2.2	3.4
	Blaby District	1,666	1,603	689	3.8	2.0	2.9

These figures are suppressed as value is 1 or 2.

Source: Office for National Statistics

If you require further information please contact Joelle Bradly, Policy, Performance & Research, Chief Executive's Department, Leicestershire County Council on 0116 3055883.

**Claimant Count (JSA) Ward Data
August 2009**

Claimant Count (JSA) Ward Data August 2009			Charnwood Borough					
			Total	Last month	Last year	Male %	Female %	Total %
Code	Wards (resident-based proportions)							
1	31UCGG	Anstey	141	148	59	5.4	2.4	3.9
2	31UCGH	Barrow and Sileby West	107	103	40	3.4	2.3	2.9
3	31UCGJ	Birstall Wanlip	87	80	44	3.7	2.0	2.9
4	31UCGK	Birstall Watermead	124	124	60	4.7	1.3	3.1
5	31UCGL	East Goscote	44	51	16	3.4	1.2	2.4
6	31UCGM	Forest Bradgate	40	39	17	2.1	1.8	2.0
7	31UCGN	Loughborough Ashby*	129	105	59	2.6	1.2	2.0
8	31UCGP	Loughborough Dishley and Hathern*	133	125	78	4.6	2.1	3.4
9	31UCGQ	Loughborough Garendon*	134	112	60	4.4	2.3	3.4
10	31UCGR	Loughborough Hastings*	240	241	162	8.0	3.9	6.0
11	31UCGS	Loughborough Lemyngton*	253	255	146	8.1	3.4	5.9
12	31UCGT	Loughborough Nanpantan*	39	39	19	1.3	0.6	1.0
13	31UCGU	Loughborough Outwoods*	77	62	23	2.8	1.8	2.3
14	31UCGW	Loughborough Shelthorpe*	215	215	109	7.0	2.3	4.7
15	31UCGX	Loughborough Southfields*	126	109	44	3.5	1.8	2.7
16	31UCGY	Loughborough Storer*	135	130	65	3.4	2.0	2.8
17	31UCGZ	Mountsorrel	181	169	67	5.9	2.2	4.1
18	31UCHA	Queniborough	27	33	20	2.0	1.1	1.5
19	31UCHB	Quorn and Mountsorrel Castle	105	98	46	3.6	1.8	2.8
20	31UCHC	Rothley and Thurcaston	70	63	26	2.7	1.2	2.0
21	31UCHD	Shepshed East	116	112	52	3.6	1.5	2.6
22	31UCHE	Shepshed West	138	118	57	4.1	2.4	3.3
23	31UCHF	Sileby	171	174	81	5.2	2.1	3.7
24	31UCHG	Syston East	111	131	46	3.8	2.3	3.0
25	31UCHH	Syston West	130	134	65	4.1	2.4	3.3
26	31UCHJ	The Wolds	35	19	14	2.0	1.8	1.9
27	31UCHK	Thurmaston	249	236	111	5.7	2.9	4.4
28	31UCLH	Wreake Villages	28	28	12	2.5	0.6	1.6
		Charnwood Borough	3,385	3,253	1,448	4.1	2.0	3.1
		*Loughborough including Hathern	1481	1393	765	4.4	2.1	3.4

These figures are suppressed as value is 1 or 2.

Market Town geographies defined by Leicestershire County Council and figures calculated using ONS Claimant Count (JSA) figures and denominators.

Source: Office for National Statistics

If you require further information please contact Joelle Bradly, Policy, Performance & Research, Chief Executive's Department, Leicestershire County Council on 0116 3055883.

**Claimant Count (JSA) Ward Data
August 2009**

Harborough District

			Total	Last month	Last year	Male %	Female %	Total %
Code	Wards (resident-based proportions)							
1	3IUDGD	Billesdon	11	11	15	1.1	1.0	1.0
2	3IUDGE	Bosworth	31	26	11	2.0	2.3	2.1
3	3IUDGF	Broughton Astley - Astley	30	22	8	2.1	2.0	2.0
4	3IUDGG	Broughton Astley - Broughton	33	28	13	2.1	1.6	1.9
5	3IUDGH	Broughton Astley - Primethorpe	31	17	14	3.6	1.6	2.6
6	3IUDGJ	Broughton Astley - Sutton	42	41	15	4.2	1.9	3.1
7	3IUDGK	Dunton	24	23	8	2.0	1.3	1.7
8	3IUDGL	Fleckney	90	90	27	4.1	1.7	2.9
9	3IUDGM	Glen	47	47	29	2.2	1.5	1.9
10	3IUDGN	Kibworth	80	82	34	3.1	1.2	2.2
11	3IUDGP	Lubenham	31	24	11	1.5	1.9	1.7
12	3IUDGQ	Lutterworth Brookfield	35	31	12	3.0	1.6	2.4
13	3IUDGR	Lutterworth Orchard	31	30	18	3.7	1.2	2.5
14	3IUDGS	Lutterworth Springs	44	40	21	4.7	1.8	3.4
15	3IUDGT	Lutterworth Swift	54	50	15	4.4	2.6	3.6
16	3IUDGU	Market Harborough - Great Bowden*	134	142	62	3.9	2.4	3.2
17	3IUDGW	Market Harborough - Little Bowden*	70	71	26	3.0	1.6	2.4
18	3IUDGX	Market Harborough - Logan*	55	63	26	2.7	1.7	2.2
19	3IUDGY	Market Harborough - Welland*	135	128	56	5.9	2.4	4.2
20	3IUDGZ	Misterton	35	26	11	2.9	1.7	2.3
21	3IUDHA	Nevill	29	25	12	2.7	1.8	2.3
22	3IUDHB	Peatling	20	25	9	1.7	1.3	1.5
23	3IUDHC	Thurnby and Houghton	106	86	52	3.8	2.4	3.1
24	3IUDHD	Tilton	19	18	4	2.2	0.9	1.6
25	3IUDHE	Ullesthorpe	24	27	9	2.3	1.2	1.8
		Harborough District	1,241	1,173	432	3.2	1.8	2.5
		* Market Harborough	394	404	170	4.0	2.1	3.1

These figures are suppressed as value is 1 or 2.

Market Town geographies defined by Leicestershire County Council and figures calculated using ONS Claimant Count (JSA) figures and denominators.

Source: Office for National Statistics

If you require further information please contact Joelle Bradly, Policy, Performance & Research, Chief Executive's Department, Leicestershire County Council on 0116 3055883.

**Claimant Count (JSA) Ward Data
August 2009**

Hinckley & Bosworth Borough

Code		Wards (resident-based proportions)	Total	Last month	Last year	Male %	Female %	Total %
1	31UEFU	Ambien	44	38	24	2.3	1.6	2.0
2	31UEFW	Barlestone Nailstone & Osbaston	36	45	21	2.2	1.2	1.7
3	31UEFX	Barwell	243	227	139	6.0	2.5	4.3
4	31UEFY	Burbage St. Catherines & Lash Hill	110	104	60	4.5	1.9	3.3
5	31UEFZ	Burbage Sketchley and Stretton	123	129	55	2.8	1.6	2.2
6	31UEGA	Cadeby Carlton & Market Bosworth	35	28	14	2.4	1.1	1.8
7	31UEGB	Earl Shilton	310	307	154	7.5	3.0	5.4
8	31UEGC	Groby	93	97	47	3.2	1.2	2.2
9	31UEGD	Hinckley Castle*	185	195	105	6.0	2.6	4.5
10	31UEGE	Hinckley Clarendon*	211	200	73	4.6	3.0	3.8
11	31UEGF	Hinckley De Montfort*	211	201	86	5.1	2.1	3.7
12	31UEGG	Hinckley Trinity*	202	196	88	7.1	2.6	4.9
13	31UEGH	Markfield Stanton and Fieldhead	79	71	41	3.5	1.2	2.4
14	31UEGJ	Newbold Verdon with Desford & Peckleton	129	124	48	3.6	1.5	2.6
15	31UEGK	Ratby Bagworth and Thornton	125	124	45	4.1	2.0	3.1
16	31UEGL	Twycross & Witherley with Sheepy	40	29	14	1.8	2.6	2.2
Hinckley & Bosworth District			2,176	2,115	885	4.5	2.1	3.4
* Hinckley (inc. Burbage & Earl Shilton)			1352	1332	621	5.3	2.4	3.9

These figures are suppressed as value is 1 or 2.

Market Town geographies defined by Leicestershire County Council and figures calculated using ONS Claimant Count (JSA) figures and denominators.

Source: Office for National Statistics

If you require further information please contact Joelle Bradly, Policy, Performance & Research, Chief Executive's Department, Leicestershire County Council on 0116 3055883.

**Claimant Count (JSA) Ward Data
August 2009**

Claimant Count (JSA) Ward Data August 2009			Leicester City					
			Total	Last month	Last year	Male %	Female %	Total %
Code	Wards (resident-based proportions)							
1	00FNNF	Abbey	679	685	508	12.2	4.8	8.6
2	00FNNG	Aylestone	373	359	245	8.0	3.1	5.6
3	00FNNH	Beaumont Leys	854	797	591	11.7	4.7	8.2
4	00FNNJ	Belgrave	482	481	338	8.6	5.2	6.9
5	00FNNK	Braunstone Park & Rowley Fields	817	804	475	12.1	4.0	8.0
6	00FNNL	Castle	851	797	590	8.8	3.3	6.1
7	00FNNM	Charnwood	623	634	465	11.9	5.0	8.5
8	00FNNN	Coleman	624	590	408	10.1	5.0	7.6
9	00FNNP	Evington	343	307	193	7.8	4.1	6.0
10	00FNNQ	Eyres Monsell	469	477	305	10.6	4.0	7.3
11	00FNNR	Fosse	504	426	252	8.1	4.4	6.4
12	00FNNS	Freemen	570	547	324	12.3	4.5	8.3
13	00FNNT	Humberstone and Hamilton	525	507	282	8.0	4.1	6.2
14	00FNNU	Knighton	320	301	209	4.7	2.0	3.3
15	00FNNW	Latimer	437	402	296	6.8	4.2	5.6
16	00FNNX	New Parks	819	750	551	13.2	4.1	8.6
17	00FNNY	Rushey Mead	527	464	351	6.6	3.7	5.2
18	00FNNZ	Spinney Hills	1196	1081	900	12.8	4.8	8.9
19	00FNPA	Stoneygate	833	822	582	9.5	4.1	6.9
20	00FNPB	Thurncourt	353	348	209	9.2	3.5	6.4
21	00FNPC	Westcotes	479	442	255	9.3	4.1	6.9
22	00FNPD	Western Park	355	305	165	8.3	2.9	5.7
		Leicester	13,033	12,326	8,207	9.5	4.0	6.8

These figures are suppressed as value is 1 or 2.

Source: Office for National Statistics

If you require further information please contact Joelle Bradly, Policy, Performance & Research, Chief Executive's Department, Leicestershire County Council on 0116 3055883.

**Claimant Count (JSA) Ward Data
August 2009**

Melton Borough

			Total	Last month	Last year	Male %	Female %	Total %
Code	Wards (resident-based proportions)							
1	3IUGFT	Asfordby	63	70	39	4.4	1.9	3.2
2	3IUGFU	Bottesford	46	53	19	3.2	1.3	2.3
3	3IUGFW	Croxtan Kerrial	29	29	9	2.4	2.9	2.7
4	3IUGFX	Frisby-on-the-Wreake	9	14	4	0.7	1.0	0.8
5	3IUGFY	Gaddesby	14	16	6	2.3	#	1.4
6	3IUGFZ	Long Clawson and Stathern	38	40	17	1.8	1.2	1.5
7	3IUGGA	Melton Craven*	78	82	32	4.7	2.1	3.5
8	3IUGGB	Melton Dorian*	102	98	37	4.3	1.9	3.1
9	3IUGGC	Melton Egerton*	116	118	69	7.0	3.0	5.0
10	3IUGGD	Melton Newport*	87	79	30	4.2	1.9	3.1
11	3IUGGE	Melton Sysonby*	106	114	40	4.9	1.5	3.2
12	3IUGGF	Melton Warwick*	76	79	40	4.7	2.3	3.6
13	3IUGGG	Old Dalby	23	21	13	2.6	1.0	1.9
14	3IUGGH	Somerby	19	21	9	2.6	0.8	1.7
15	3IUGGJ	Waltham-on-the-Wolds	11	12	3	1.6	0.6	1.1
16	3IUGGK	Wymondham	25	22	19	2.7	2.5	2.6
		Melton Borough	842	868	328	3.8	1.7	2.8
		* Melton Mowbray	565	570	248	4.9	2.1	3.5

These figures are suppressed as value is 1 or 2.

Market Town geographies defined by Leicestershire County Council and figures calculated using ONS Claimant Count (JSA) figures and denominators.

Source: Office for National Statistics

If you require further information please contact Joelle Bradly, Policy, Performance & Research, Chief Executive's Department, Leicestershire County Council on 0116 3055883.

**Claimant Count (JSA) Ward Data
August 2009**

North West Leicestershire District

Code	Wards (resident-based proportions)	Total	Last month	Last year	Male	Female	Total
					%	%	
1	31UHFZ Appleby	24	22	10	2.5	1.2	1.9
2	31UHGA Ashby Castle*	20	18	11	1.7	0.0	1.2
3	31UHGB Ashby Holywell*	94	87	48	4.7	1.7	3.3
4	31UHGC Ashby Ivanhoe*	76	71	36	4.4	1.3	2.9
5	31UHGD Bardon**	48	58	22	3.3	1.6	2.5
6	31UHGE Breedon	29	24	10	2.7	1.2	2.0
7	31UHGF Castle Donington	147	142	58	4.4	2.3	3.4
8	31UHGG Coalville**	152	133	77	6.8	2.7	4.8
9	31UHGH Greenhill**	210	217	104	7.2	2.9	5.1
10	31UHGJ Hugglescote**	82	85	38	3.5	1.9	2.8
11	31UH GK Ibstock and Heather	156	145	55	4.9	2.2	3.6
12	31UHGL Kegworth and Whatton	60	57	34	3.2	1.0	2.2
13	31UHGM Measham	102	101	53	4.5	1.8	3.2
14	31UHGN Moira	89	88	31	4.0	2.1	3.1
15	31UHGP Oakthorpe and Donisthorpe	49	39	18	3.9	2.0	3.0
16	31UHGQ Ravenstone and Packington	40	33	18	3.6	0.0	2.7
17	31UHGR Snibston**	87	102	45	3.8	1.5	2.7
18	31UHGS Thringstone**	76	82	36	3.9	1.6	2.8
19	31UHGT Valley	81	90	50	3.8	2.2	3.0
20	31UHGU Whitwick**	125	133	58	4.4	1.8	3.2
	NW Leicestershire District	1,747	1,727	734	4.3	1.9	3.2
	* Ashby de la Zouch	190	176	95	3.9	1.3	2.7
	** Coalville	780	810	380	4.9	2.1	3.5

These figures are suppressed as value is 1 or 2.

Market Town geographies defined by Leicestershire County Council and figures calculated using ONS Claimant Count (JSA) figures and denominators.

Source: Office for National Statistics

If you require further information please contact Joelle Bradly, Policy, Performance & Research, Chief Executive's Department, Leicestershire County Council on 0116 3055883.

**Claimant Count (JSA) Ward Data
August 2009**

Oadby & Wigston Borough

Code	Wards (resident-based proportions)	Total	Last month	Last year	Male	Female	Total
					%	%	
1	31UJFL Oadby Brocks Hill*	78	54	40	4.3	2.7	3.6
2	31UJFM Oadby Grange*	67	59	37	2.0	0.9	1.5
3	31UJFN Oadby St. Peter's*	88	86	53	6.1	2.4	4.3
4	31UJFP Oadby Uplands*	90	95	39	4.9	2.1	3.5
5	31UJFQ Oadby Woodlands*	80	57	28	3.9	1.6	2.7
6	31UJFR South Wigston	268	260	136	8.5	3.0	5.8
7	31UJFS Wigston All Saints**	102	97	50	3.7	1.9	2.8
8	31UJFT Wigston Fields**	162	171	87	6.4	1.9	4.2
9	31UJFU Wigston Meadowcourt**	114	115	66	4.0	1.4	2.8
10	31UJFW Wigston St. Wolstan's**	118	114	64	4.4	1.8	3.2
	Oadby & Wigston Borough	1,167	1,108	585	4.8	1.9	3.4
	* Oadby	403	351	197	3.8	1.8	2.8
	** Wigston	496	497	267	4.6	1.8	3.3

These figures are suppressed as value is 1 or 2.

Market Town geographies defined by Leicestershire County Council and figures calculated using ONS Claimant Count (JSA) figures and denominators.

Source: Office for National Statistics

If you require further information please contact Joelle Bradly, Policy, Performance & Research, Chief Executive's Department, Leicestershire County Council on 0116 3055883.

**Claimant Count (JSA) Ward Data
August 2009**

		Rutland						
Code	Wards (resident-based proportions)	Total	Last month	Last year	Male %	Female %	Total %	
1	00FPMS	Braunston and Belton	10	11	5	1.9	0.9	1.5
2	00FPMT	Cottesmore	27	33	15	1.1	1.6	1.3
3	00FPMU	Exton	14	15	6	0.9	1.5	1.1
4	00FPMW	Greetham	17	17	10	1.1	1.6	1.3
5	00FPMX	Ketton	28	32	13	2.6	1.2	1.9
6	00FPMY	Langham	11	8	10	2.0	0.9	1.5
7	00FPMZ	Lyddington	13	11	6	2.4	0.8	1.7
8	00FPNA	Martinsthorpe	8	11	6	1.4	1.0	1.2
9	00FPNB	Normanton	25	24	14	1.1	1.4	1.2
10	00FPNC	Oakham North East*	32	32	17	2.1	1.2	1.7
11	00FPND	Oakham North West*	39	40	13	2.3	1.9	2.1
12	00FPNE	Oakham South East*	23	23	7	2.3	0.9	1.7
13	00FPNF	Oakham South West*	41	38	7	4.0	2.3	3.2
14	00FPNG	Ryhall and Casterton	37	28	21	2.5	1.7	2.1
15	00FPNH	Uppingham	53	52	22	2.5	1.2	1.9
16	00FPNJ	Whissendine	19	17	7	2.9	1.8	2.4
		Rutland	397	392	151	2.1	1.4	1.8
		*Oakham	135	133	44	2.6	1.5	2.1

These figures are suppressed as value is 1 or 2.

Market Town geographies defined by Leicestershire County Council and figures calculated using ONS Claimant Count (JSA) figures and denominators.

Source: Office for National Statistics

If you require further information please contact Joelle Bradly, Policy, Performance & Research, Chief Executive's Department, Leicestershire County Council on 0116 3055883.