

Unemployment Bulletin

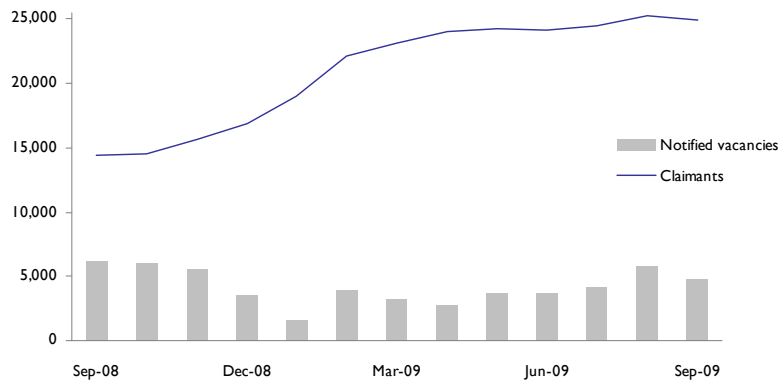
September 2009



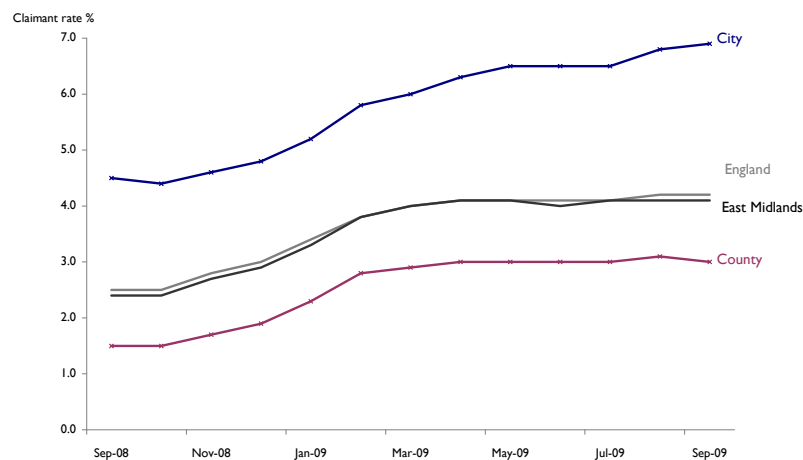
Recession Summary

This additional front page provides a monthly snapshot of the economic downturn at a local level. JSA claimants and vacancies are used to exemplify recent change and trends over the past 12 months. Following tables have also been adapted to include monthly and annual comparisons.

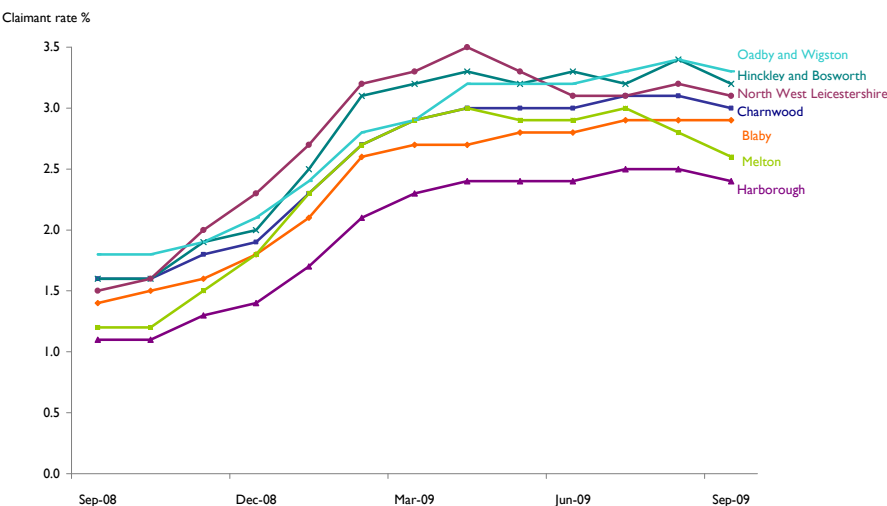
JSA claimants and new notified vacancies in Leicester and Leicestershire
September 08 to September 09



JSA Claimant Rate
September 2008 to September 2009



JSA claimant rates in Leicestershire districts
September 2008 to September 2009



Key points

- There were 24,885 people claiming JSA benefits in the sub-region in September 2009; compared to 25,257 in August 2009 and 14,372 in September 2008.
- The JSA claimant numbers in September 2009 increased by 75 in the City to a rate of 6.9%. In the County, claimants decreased by 447 to a rate of 3.0%. Claimant numbers decreased this month in all districts. The largest rate decreases were in Melton and Hinckley districts.
- In the City, Spinney Hills and New Parks wards saw the largest monthly increase in JSA rates (+ 37 claimants in Spinney Hills and +23 in New Parks). Evington ward saw the largest monthly decrease in claimant rates (-22 claimants) in the City.
- Braunstone ward has seen the largest annual claimant rate increase in the sub-region from 462 claimants in September 2008 (4.5%) to 832 claimants in September 2009 (8.2%).
- In the sub-region, there were 4,823 notified vacancies in September 2009 compared to 5,827 the previous month. There were 4,149 unfilled live vacancies in September. This is a ratio of 6 claimants per unfilled vacancy, compared to 5.9 the previous month.

Further analysis on the impact of the recession in the sub-region is available in the September Credit Crunch Report

Unemployment Bulletin

September 2009



Introduction

The Unemployment Bulletin provides a monthly update of the latest unemployment and benefit data for Leicester and Leicestershire. The data is sourced from Nomis (www.nomisweb.co.uk) which contains data from the Office for National Statistics, the Department of Work and Pensions and other official sources. Some figures have been calculated by Leicestershire County Council and where this is the case it is stated in the source.

There are a number of ways of measuring unemployment and this bulletin mainly focuses on the Claimant Count which is a measure of the number or proportion of people receiving Job Seekers Allowance (JSA) and National Insurance Credits at Jobcentre Plus local offices. This is not an official measure of unemployment but it is the only indicative statistic available for areas smaller than Local Authorities.

Official estimates of unemployment in the UK are obtained from the Labour Force Survey (LFS) using the internationally agreed International Labour Organisation (ILO) definition. The ILO definition is based on the number of people without jobs who are looking for work and are available to start work (and includes people whether or not they are eligible to receive unemployment related benefits). The LFS unemployment figures which are subject to sampling differences are not reliable at small areas. The Claimant Count is released on a monthly basis and is available down to ward level, so is used as a more current indicator of unemployment levels. Using the two sources together provides a more comprehensive picture of the labour market.

There is a large degree of overlap between the Claimant Count and Unemployment (LFS ILO definition) although the latter figures are generally higher. People who are not claimants can appear among the unemployed if they are not entitled to unemployment related benefits. Similarly, claimants of unemployment related benefits may not appear in the measure of unemployment if they stated that they are not seeking or are not available to start work.

Tables 1 to 7 use Claimant Count data and Table 8 shows the Unemployment (LFS ILO definition) figures.

Table 1: Resident-Based Claimant Count (JSA) Proportions: September 2009

Area	Claimant Count Proportion (working age)			Total Claimant Count	Change since last month	Change since last year	Previous months Proportion (change)	Previous years Proportion (change)
	Total	Male	Female					
Leicester Shire	4.2%	5.7%	2.6%	24,885	-372	10,513	4.3%(-0.1)	2.5%(1.7)
Leicestershire County	3.0%	3.9%	1.9%	11,777	-447	5,932	3.1%(-0.1)	1.5%(1.5)
Leicester City	6.9%	9.6%	4.0%	13,108	75	4,581	6.8%(0.1)	4.5%(2.4)
Rutland	1.7%	2.0%	1.3%	382	-15	215	1.8%(-0.1)	0.7%(1.0)
East Midlands	4.1%	5.6%	2.4%	111,735	-906	47,021	4.1%(0.0)	2.4%(1.7)
UK	4.2%	5.8%	2.4%	1,591,112	-11,077	646,396	4.2%(0.0)	2.5%(1.7)

Source: Office for National Statistics (Nomis)

Note: Leicester Shire comprises the areas of Leicestershire County and Leicester City only.

National Statistics will release the October 2009 unemployment figures on Wednesday 11th November 2009.

Archived Unemployment Bulletins and other reports produced by Leicestershire County Council are available on the Leicestershire Statistics and Research Online website, www.lsr-online.org

Table 2: Resident-Based Claimant Count (JSA) Proportions: September 2009.

Districts	Claimant Count Proportion (working age)	Total Claimant Count	Total last month	Total last year	Previous months Proportion (change)	Previous years Proportion (change)
Oadby & Wigston	3.3%	1,145	1,167	602	3.4%(-0.1)	1.8%(1.5)
Hinckley & Bosworth	3.2%	2,064	2,176	1,041	3.4%(-0.2)	1.6%(1.6)
NW Leicestershire	3.1%	1,696	1,747	834	3.2%(-0.1)	1.5%(1.6)
Charnwood	3.0%	3,274	3,385	1,648	3.1%(-0.1)	1.6%(1.4)
Blaby	2.9%	1,650	1,666	806	2.9%(0.0)	1.4%(1.5)
Melton	2.6%	778	842	363	2.8%(-0.2)	1.2%(1.4)
Harborough	2.4%	1,170	1,241	551	2.5%(-0.1)	1.1%(1.3)

Source: Office for National Statistics (Nomis)

Table 3: Resident-Based Claimant Count (JSA) Proportions: in Market Towns; September 2009.

Market Towns	Claimant Count Proportion (working age)	Total Claimant Count	Previous months Proportion (change)	Previous years Proportion (change)
Hinckley (inc. Burbage & Earl Shilton)	3.8%	1,288	3.9%(-0.1)	1.9%(1.9)
Coalville	3.4%	744	3.5%(-0.1)	1.9%(1.5)
Melton Mowbray	3.3%	530	3.5%(-0.2)	1.4%(1.9)
Loughborough (including Hathern)	3.3%	1,458	3.1%(0.2)	2.0%(1.3)
Wigston	3.2%	483	3.3%(-0.1)	1.8%(1.4)
Oadby	2.8%	403	2.8% (0.0)	1.5%(1.3)
Market Harborough	2.7%	353	3.1%(-0.4)	1.4%(1.3)
Ashby de la Zouch	2.6%	185	2.7%(-0.1)	1.3%(1.3)
Oakham	1.9%	125	1.8%(0.1)	0.7%(1.2)

Source: Office for National Statistics (Nomis); Market Town geographies defined by Leicestershire County Council and figures calculated using ONS Claimant Count (JSA) figures and denominators

Table 4: Claimant Count (JSA) by Age and Duration; September 2009.

Area	18-24 years old				Over 25 years old			
	Up to 6 months	6-12 months	13-18 months	Over 18 months	Up to 6 months	6-12 months	13-18 months	Over 18 months
Blaby	435	105	5	0	735	260	70	30
Charnwood	825	215	10	5	1,410	555	160	75
Harborough	290	60	5	0	550	200	45	20
Hinckley & Bosworth	505	120	5	0	895	385	100	50
Melton	175	55	5	0	350	135	35	15
NW Leicestershire	415	105	5	5	755	285	85	40
Oadby & Wigston	305	80	5	0	470	175	80	25
Leicester City	3,095	840	25	15	5,060	2,385	1,035	600
Leicestershire County	2,950	750	40	10	5,165	1,990	575	260
Rutland	85	20	0	0	190	65	10	10
Leicester Shire	6,045	1,585	70	20	10,225	4,375	1,610	860

Source: Office for National Statistics (Nomis) Note: Figures are rounded to the nearest 5.

Claimant Count (JSA) by Ethnicity

JSA benefit data have been published by the Office for National Statistics (ONS) for many years as a key labour market indicator. In November 2006 ONS published JSA claimant data by ethnicity for the first time. The data is available for the detailed ethnic groups down to Local Authority level and is backdated to April 2005.

JSA claimant data by ethnicity has been included in Tables 5, 6, and 7 of this bulletin. The JSA data by ethnicity used in these table is a month in arrears of the other Claimant Count data in the other tables in the bulletin.

For more information, please see; www.nomisweb.co.uk/articles/news/files/DWP_Ethnicity_JSA.pdf

Table 5: Claimant County (JSA) by Ethnicity; August 2009.

Area	White	Mixed	Black or Black British	Asian or Asian British	Chinese or Other Ethnic Group	'Non White'	Prefer not to say / Unknown
Blaby	1,395	25	25	115	10	175	95
Charnwood	2,785	45	25	275	55	400	205
Harborough	1,100	10	5	35	5	55	90
Hinckley & Bosworth	1,780	15	5	20	10	50	345
Melton	805	5	5	0	0	10	25
NW Leicestershire	1,655	10	0	5	5	20	70
Oadby & Wigston	820	25	20	240	5	290	60
Leicester City	6,835	360	1,120	3,610	335	5,430	770
Leicestershire County	10,340	130	90	685	95	1,000	880
Leicester Shire	17,180	495	1,215	4,295	430	6,430	1,650
East Midlands	92,305	1,850	3,930	6,520	1,220	13,520	6,545
Great Britain	1,221,050	24,245	83,250	79,980	25,990	213,465	109,295

Note: Figures are rounded to the nearest 5.

Sources: Office for National Statistics (Nomis)

Table 6: Resident-based Claimant Count (JSA) Proportions by Ethnicity; August 2009.

Area	White	Mixed	Black or Black British	Asian or Asian British	Chinese or Other Ethnic Group	'Non White'
Blaby	1.6%	2.3%	3.1%	2.9%	1.7%	2.7%
Charnwood	2.0%	2.4%	1.8%	2.5%	1.9%	2.3%
Harborough	1.4%	1.3%	1.3%	1.8%	1.3%	1.5%
Hinckley & Bosworth	1.8%	1.7%	1.3%	0.8%	2.0%	1.2%
Melton	1.7%	1.7%	2.5%	0.0%	0.0%	0.8%
NW Leicestershire	1.9%	1.4%	0.0%	0.4%	1.3%	0.7%
Oadby & Wigston	1.8%	3.1%	2.5%	3.2%	0.8%	3.0%
Leicester City	3.8%	5.1%	9.0%	4.3%	8.8%	5.1%
Leicestershire County	1.8%	2.0%	2.1%	2.4%	1.8%	2.2%
Leicester Shire	2.3%	3.7%	7.3%	3.8%	4.7%	4.2%
East Midlands	2.3%	3.3%	6.8%	3.3%	3.2%	3.8%

Source: Office for National Statistics (Nomis). Proportions calculated by Leicestershire County Council using ONS mid-2005 experimental estimates of population by ethnic group, published October 2007

Table 7: Claimant Count (JSA) by Ethnicity, Gender and Age; August 2009.

	Total	Previous month	Previous year	Male				Female			
				Aged <18	Aged 18-24	Aged 25-49	Aged 50+	Aged < 18	Aged 18-24	Aged 25-49	Aged 50+
Leicester Shire											
'White'	17,175	16,830	8,960	50	3,645	6,560	2,190	35	1,750	2,105	840
'Non-white'	6,440	6,125	4,120	5	1,100	2,595	645	5	715	1,020	355
Leicester City											
'White'	6,840	6,585	4,175	25	1,465	2,830	755	25	675	790	275
'Non-white'	5,430	5,155	3,635	5	915	2,245	545	5	590	820	305
Leicestershire County											
'White'	10,345	10,240	4,785	30	2,180	3,730	1,435	10	1,075	1,315	570
'Non-white'	1,000	955	490	0	180	350	100	0	125	195	50

Source: Office for National Statistics (Nomis)

Unemployment: International Labour Organisation (ILO) Definition

Official estimates of unemployment in the UK are obtained from the Labour Force Survey (LFS) using the internationally agreed International Labour Organisation (ILO) definition. The ILO definition is based on the number of people without jobs who are looking for and available to start work. The LFS unemployment figures which are subject to sampling differences are not available for smaller areas. The Claimant Count is released on a monthly basis and is available down to ward level, so is used as a more current indicator of unemployment levels.

Table 8: Unemployment Rates: ILO Definition; April 2008 - March 2009

Area	April 2008 - March 2009		April 2007 - March 2008	
	ILO Unemployment Rate (working age)	Total Persons ILO Unemployed	ILO Unemployment Rate (working age)	Total Persons ILO Unemployed
United Kingdom	6.4%	1,891,400	5.3%	1,566,700
East Midlands	6.6%	144,800	5.4%	117,300
Leicester Shire	7.3%	34,400	6.1%	28,500
Leicester City	12.8%	17,800	11.2%	15,800
Leicestershire County	5.0%	16,700	3.9%	12,700

Source: Labour Force Survey/Annual Population Survey, Office for National Statistics (Nomis)

Other Department for Work and Pensions Benefits Statistics

Job Seekers Allowance is one of a number of types of benefit which is related to worklessness, and recipients of this benefit constitute the most visible group of people who are out of work. However, many people have been diverted away from Job Seekers Allowance on to other benefits, the largest number being onto Incapacity Benefit. Nationally, the number of people claiming Incapacity Benefit is over three times the number of people out of work and claiming JSA.

The government recently published a Green Paper on welfare reform in which it is argued that to meet the goal of reaching a UK employment rate of 80%, more people on inactive benefits must be moved into work, particularly those who have been on benefits for a long time.

One method of classifying benefit claimants is by breaking them down into statistical groups. This presents the main reason why an individual is claiming benefit. Benefits are arranged hierarchically and claimants are assigned to the top most benefit which they receive. In this way each claimant only appears once, even though they may claim more than one benefit - the total number of working-age people who are claiming one or more key benefits is often used as a proxy for worklessness.

These figures are provided by the Department for Work and Pensions and are updated quarterly.

Table 9: Working-age people claiming one or more key DWP benefit by duration; February 2009

Area	Number	All benefits			Duration (proportion of all claimants)				
		Rate	Previous year number	Previous year rate	<6mths	6mths - 1yr	1yr - 2yrs	2yrs - 5yrs	+5yrs
Blaby	5,360	9.4%	4,360	7.7%	32%	8%	8%	15%	37%
Charnwood	10,850	10.1%	9,100	8.6%	31%	9%	9%	16%	35%
Harborough	3,970	8.0%	3,240	6.6%	32%	8%	8%	14%	37%
Hinckley & Bosworth	7,150	11.0%	5,880	9.1%	33%	8%	9%	15%	35%
Melton	2,850	9.5%	2,180	7.3%	35%	8%	8%	13%	35%
NW Leicestershire	7,060	12.7%	6,050	11.0%	29%	8%	9%	15%	39%
Oadby and Wigston	3,560	10.4%	3,030	8.9%	29%	10%	9%	15%	36%
Leicester City	40,050	21.0%	35,770	19.0%	27%	10%	11%	16%	37%
Leicestershire County	40,790	10.2%	33,820	8.6%	32%	8%	9%	15%	36%
Rutland	1,540	6.8%	1,270	5.5%	31%	7%	10%	14%	38%
East Midlands	409,180	15.0%	355,380	13.1%	28%	9%	9%	15%	39%
Great Britain	5,784,320	15.7%	5,156,000	14.1%	27%	9%	9%	15%	40%

Source: Department of Work and Pension (Nomis)

Table 10: Benefit Claimants by Statistical Group - Main reason for claiming benefit; February 2009

Statistical group	East Midlands		Leicester City		Leicestershire County	
	Number	Rate	Number	Rate	Number	Rate
Employment and Support Allowance & Incapacity Benefits	178,570	6.5	15,940	8.3	16,570	4.2
Job Seeker	105,420	3.9	11,280	5.9	11,160	2.8
Lone Parent	47,480	1.7	6,070	3.2	3,940	1.0
Carer	31,020	1.1	2,930	1.5	3,410	0.9
Disabled	28,420	1.0	2,040	1.1	3,470	0.9
Others on income related benefit	11,640	0.4	1,340	0.7	1,240	0.3
Bereaved	6,630	0.2	450	0.2	1,000	0.3
Total	409,180	15.0	40,050	21.0	40,790	10.2

Source: Department of Work and Pension (Nomis)

Note: Benefits are arranged hierarchically and claimants are assigned to the top most benefit they receive. Each claimant appears once only, even though some claim more than one benefit, permitting the estimation of the total number of people claiming one or more benefits. The Statistical Group hierarchy is a) Jobseeker b) ESA & Incapacity benefits c) Lone parents d) Carers e) Other income-related benefits f) Disabled g) Bereaved h) Housing Benefit i) receiving State Pension only. Thus a person who is a lone parent and receives Incapacity Benefit would be classified as receiving incapacity benefits. This is only one of the possible ways in which claimants could be classified and alternative classifications are possible.

For more information about DWP statistics and research www.dwp.gov.uk/asd/data_guide.asp

Definitions

Claimant Count - the count of claimants of unemployment related benefits is based on the administrative records of people claiming these benefits. Since October 1996 this has been the number of people claiming Job Seekers Allowance (JSA). The publication of claimant count figures is normally five weeks after the date to which they refer. The claimant count is accurate down to very small geographic areas and is unaffected by sampling variability since it is a 100% count. This means it can be used as an indicator of those without work down to small areas.

Resident-based Claimant Count Proportions - express the number of claimants resident in an area as a percentage of the working age population resident in that area. Claimant count rates can also be expressed as a proportion of the workforce jobs in an area, however in smaller areas using workforce job-based rates can cause distortions in the rates caused by commuting patterns. Using resident-based proportions avoids this distortion.

Unemployment (LFS ILO definition) - The definition of unemployment is internationally agreed and recommended by the International Labour Organisation (ILO) - an agency of the United Nations. Many countries use this definition. By this definition unemployed people are:

- without a job, want a job, have actively sought work in the last 4 weeks and are available to start work in the next 2 weeks, or
- out of work, have found a job and are waiting to start it in the next 2 weeks

Unemployment Rate (LFS ILO definition) - expresses the number of unemployed people resident in an area as a percentage of the economically active working age population resident in that area.

Labour Force Survey - The Labour Force Survey is a random sample survey which is carried out throughout the UK. It is conducted every three months using around 53,000 households. The survey collects information about the personal circumstances and work of everyone living in these households. The Office for National Statistics (ONS) uses the Labour Force Survey as its source for unemployment data. Unemployment is measured through questions asked in the survey and not by interviewing everybody in the country. Answers are then weighted to represent everyone. As with any sample survey there is sampling variability and this is high for areas below regional level. Therefore, the figures are not reliable for small areas. Each month the ONS releases statistics on the number of people who are unemployed in the United Kingdom for the latest available 3-month rolling period.

Economically Active - people aged 16 or over who are either in employment or are unemployed (LFS ILO definition)

Economically Inactive - people aged 16 or over who are neither in employment nor unemployed (LFS ILO definition) - e.g. they do not have a job and do not want a job. This group includes, for example, those who are looking after the family and/or home or retired.

Working Age Population - Working age is defined as 16-64 for males and 16-59 for females. The working age population figures are derived from mid-year 2006 population estimates.

Benefit Claimants Statistical Group - Benefits are arranged hierarchically and claimants are assigned to the top most benefit they receive. Each claimant appears once only, even though some claim more than one benefit, permitting the estimation of the total number of people claiming one or more benefits. The Statistical Group hierarchy is a) Jobseeker b) Incapacity benefits c) Lone parents d) Carers e) Other income-related benefits f) Disabled g) Bereaved h) Housing Benefit i) receiving State Pension only. Thus a person who is a lone parent and receives Incapacity Benefit would be classified as receiving incapacity benefits. The total number of working-age people who are claiming one or more key benefits is often used as a proxy for worklessness. This is only one of the possible ways in which claimants could be classified and alternative classifications are possible.

For further information on unemployment statistics please refer to the document entitled 'How exactly is unemployment measured?' which is produced by the Office for National Statistics:

www.statistics.gov.uk/downloads/theme_labour/unemployment.pdf

For further information about Department of Work and Pensions statistics and research:

www.dwp.gov.uk/asd/data_guide.asp

For enquiries about the Unemployment Bulletin please contact Joelle Bradly on 0116 305 7341

**Claimant Count (JSA) Ward Data
September 2009**

			Blaby District					
			Total	Last month	Last year	Male %	Female %	Total %
Code	Wards (resident-based proportions)							
1	31UBFY	Blaby South	83	102	52	5.8	1.5	3.7
2	31UBFZ	Cosby with South Whetstone	59	61	29	2.3	1.6	1.9
3	31UBGA	Countesthorpe	92	93	52	2.9	1.5	2.2
4	31UBGB	Croft Hill	30	35	10	2.7	1.8	2.3
5	31UBGC	Ellis	82	85	41	4.0	1.1	2.6
6	31UBGD	Enderby and St. John's	96	94	45	5.6	1.7	3.6
7	31UBGE	Fairstone	71	69	40	3.9	1.5	2.8
8	31UBGF	Forest	107	98	47	2.9	2.0	2.5
9	31UBGG	Millfield	54	60	34	5.8	3.0	4.5
10	31UBGH	Muxloe	60	58	26	3.3	1.7	2.5
11	31UBGJ	Narborough and Littlethorpe	97	102	33	4.1	1.7	2.9
12	31UBGK	Normanton	35	29	11	2.4	1.9	2.2
13	31UBGL	North Whetstone	94	96	38	3.7	1.9	2.9
14	31UBGM	Pastures	70	68	35	2.8	1.7	2.3
15	31UBGN	Ravenhurst and Fosse	189	203	94	5.9	2.4	4.2
16	31UBGP	Saxondale	143	144	79	3.4	2.3	2.9
17	31UBGQ	Stanton and Flamville	112	120	69	2.9	2.2	2.6
18	31UBGR	Winstanley	157	149	71	4.5	2.5	3.6
		Blaby District	1,650	1,666	806	3.8	1.9	2.9

These figures are suppressed as value is 1 or 2.

Source: Office for National Statistics

If you require further information please contact Joelle Bradly, Policy, Performance & Research, Chief Executive's Department, Leicestershire County Council on 0116 3055883.

**Claimant Count (JSA) Ward Data
September 2009**

Charnwood Borough

			Total	Last month	Last year	Male %	Female %	Total %
Code	Wards (resident-based proportions)							
1	31UCGG	Anstey	128	141	60	4.7	2.3	3.5
2	31UCGH	Barrow and Sileby West	98	107	43	3.2	2.1	2.7
3	31UCGJ	Birstall Wanlip	82	87	52	3.4	2.0	2.7
4	31UCGK	Birstall Watermead	126	124	57	4.6	1.5	3.2
5	31UCGL	East Goscote	45	44	19	3.8	1.0	2.4
6	31UCGM	Forest Bradgate	45	40	18	2.6	1.7	2.2
7	31UCGN	Loughborough Ashby*	134	129	62	2.6	1.4	2.1
8	31UCGP	Loughborough Dishley and Hathern*	120	133	69	4.2	1.8	3.1
9	31UCGQ	Loughborough Garendon*	122	134	59	3.9	2.2	3.1
10	31UCGR	Loughborough Hastings*	252	240	166	8.2	4.3	6.4
11	31UCGS	Loughborough Lemyngton*	248	253	140	8.1	3.2	5.8
12	31UCGT	Loughborough Nanpantan*	37	39	20	1.2	0.6	0.9
13	31UCGU	Loughborough Outwoods*	76	77	29	2.8	1.8	2.3
14	31UCGW	Loughborough Shelthorpe*	215	215	110	7.0	2.2	4.7
15	31UCGX	Loughborough Southfields*	117	126	54	3.2	1.7	2.5
16	31UCGY	Loughborough Storer*	137	135	65	3.4	2.0	2.8
17	31UCGZ	Mountsorrel	166	181	78	5.3	2.1	3.7
18	31UCHA	Queniborough	31	27	21	2.3	1.2	1.8
19	31UCHB	Quorn and Mountsorrel Castle	102	105	45	3.5	1.8	2.7
20	31UCHC	Rothley and Thurcaston	67	70	34	2.6	1.2	1.9
21	31UCHD	Shepshed East	118	116	55	3.7	1.6	2.7
22	31UCHE	Shepshed West	118	138	60	4.0	1.5	2.8
23	31UCHF	Sileby	166	171	73	5.4	1.7	3.6
24	31UCHG	Syston East	112	111	43	4.1	1.9	3.1
25	31UCHH	Syston West	120	130	69	3.8	2.2	3.0
26	31UCHJ	The Wolds	34	35	11	2.0	1.7	1.9
27	31UCHK	Thurmaston	233	249	122	5.5	2.6	4.1
28	31UACL	Wreake Villages	25	28	14	2.3	0.5	1.4
		Charnwood Borough	3,274	3,385	1,648	4.0	1.9	3.0
		*Loughborough including Hathern	1458	1481	774	4.3	2.1	3.3

These figures are suppressed as value is 1 or 2.

Market Town geographies defined by Leicestershire County Council and figures calculated using ONS Claimant Count (JSA) figures and denominators.

Source: Office for National Statistics

If you require further information please contact Joelle Bradly, Policy, Performance & Research, Chief Executive's Department, Leicestershire County Council on 0116 3055883.

**Claimant Count (JSA) Ward Data
September 2009**

Harborough District

Code	Wards (resident-based proportions)	Total	Last month	Last year	Male	Female	Total
					%	%	%
1	3IUDGD Billesdon	12	11	11	0.9	1.4	1.1
2	3IUDGE Bosworth	31	31	12	2.1	2.1	2.1
3	3IUDGF Broughton Astley - Astley	29	30	13	2.3	1.5	2.0
4	3IUDGG Broughton Astley - Broughton	32	33	19	2.1	1.5	1.8
5	3IUDGH Broughton Astley - Primethorpe	37	31	14	3.9	2.3	3.1
6	3IUDGJ Broughton Astley - Sutton	40	42	15	4.1	1.7	3.0
7	3IUDGK Dunton	21	24	8	1.5	1.5	1.5
8	3IUDGL Fleckney	92	90	34	4.1	1.8	3.0
9	3IUDGM Glen	52	47	33	2.3	1.9	2.1
10	3IUDGN Kibworth	81	80	33	3.2	1.2	2.2
11	3IUDGP Lubenham	32	31	9	1.6	1.9	1.7
12	3IUDGQ Lutterworth Brookfield	32	35	17	2.9	1.3	2.2
13	3IUDGR Lutterworth Orchard	27	31	21	3.2	1.0	2.2
14	3IUDGS Lutterworth Springs	37	44	25	4.0	1.5	2.8
15	3IUDGT Lutterworth Swift	54	54	17	4.3	2.8	3.6
16	3IUDGU Market Harborough - Great Bowden*	130	134	64	3.9	2.2	3.1
17	3IUDGW Market Harborough - Little Bowden*	59	70	25	2.5	1.4	2.0
18	3IUDGX Market Harborough - Logan*	46	55	24	2.3	1.3	1.9
19	3IUDGY Market Harborough - Welland*	118	135	60	5.0	2.2	3.7
20	3IUDGZ Misterton	31	35	11	2.6	1.4	2.1
21	3IUDHA Nevill	21	29	9	2.6	0.7	1.7
22	3IUDHB Peatling	25	20	8	2.0	1.7	1.9
23	3IUDHC Thurnby and Houghton	88	106	52	3.2	1.9	2.6
24	3IUDHD Tilton	16	19	5	1.9	0.7	1.3
25	3IUDHE Ullesthorpe	27	24	12	2.3	1.7	2.0
	Harborough District	1,170	1,241	551	3.0	1.7	2.4
	* Market Harborough	353	394	173	3.6	1.9	2.7

These figures are suppressed as value is 1 or 2.

Market Town geographies defined by Leicestershire County Council and figures calculated using ONS Claimant Count (JSA) figures and denominators.

Source: Office for National Statistics

If you require further information please contact Joelle Bradly, Policy, Performance & Research, Chief Executive's Department, Leicestershire County Council on 0116 3055883.

**Claimant Count (JSA) Ward Data
September 2009**

Hinckley & Bosworth Borough

Code		Wards (resident-based proportions)	Total	Last month	Last year	Male %	Female %	Total %
1	31UEFU	Ambien	36	44	20	2.1	1.1	1.6
2	31UEFW	Barlestone Nailstone & Osbaston	40	36	22	2.4	1.3	1.9
3	31UEFX	Barwell	234	243	145	5.6	2.6	4.2
4	31UEFY	Burbage St. Catherines & Lash Hill*	105	110	62	4.5	1.6	3.2
5	31UEFZ	Burbage Sketchley and Stretton*	113	123	63	2.6	1.4	2.0
6	31UEGA	Cadeby Carlton & Market Bosworth	34	35	15	2.0	1.4	1.8
7	31UEGB	Earl Shilton*	329	310	154	8.1	3.2	5.7
8	31UEGC	Groby	82	93	39	2.7	1.2	2.0
9	31UEGD	Hinckley Castle*	166	185	103	5.6	2.1	4.0
10	31UEGE	Hinckley Clarendon*	177	211	80	3.8	2.5	3.2
11	31UEGF	Hinckley De Montfort*	206	211	87	4.9	2.1	3.6
12	31UEGG	Hinckley Trinity*	192	202	90	6.8	2.4	4.7
13	31UEGH	Markfield Stanton and Fieldhead	86	79	47	3.6	1.5	2.6
14	31UEGJ	Newbold Verdon with Desford & Peckleton	114	129	53	3.2	1.3	2.3
15	31UEGK	Ratby Bagworth and Thornton	114	125	49	3.7	1.9	2.8
16	31UEGL	Twycross & Witherley with Sheepy	36	40	12	2.0	1.9	2.0
		Hinckley & Bosworth District	2,064	2,176	1,041	4.3	2.0	3.2
		* Hinckley (inc. Burbage & Earl Shilton)	1288	1352	639	5.1	2.2	3.8

These figures are suppressed as value is 1 or 2.

Market Town geographies defined by Leicestershire County Council and figures calculated using ONS Claimant Count (JSA) figures and denominators.

Source: Office for National Statistics

If you require further information please contact Joelle Bradly, Policy, Performance & Research, Chief Executive's Department, Leicestershire County Council on 0116 3055883.

**Claimant Count (JSA) Ward Data
September 2009**

			Leicester City					
			Total	Last month	Last year	Male %	Female %	Total %
Code	Wards (resident-based proportions)							
1	00FNNF	Abbey	683	679	510	12.2	4.9	8.6
2	00FNNG	Aylestone	370	373	257	8.3	2.7	5.6
3	00FNNH	Beaumont Leys	873	854	604	12.0	4.7	8.4
4	00FNNJ	Belgrave	473	482	318	8.1	5.4	6.7
5	00FNNK	Braunstone Park & Rowley Fields	831	817	462	12.0	4.4	8.2
6	00FNNL	Castle	835	851	573	8.6	3.3	6.0
7	00FNNM	Charnwood	616	623	481	12.0	4.8	8.4
8	00FNNN	Coleman	636	624	419	10.2	5.2	7.8
9	00FNNP	Evington	321	343	184	7.5	3.6	5.6
10	00FNNQ	Eyres Monsell	484	469	326	11.1	4.0	7.5
11	00FNNR	Fosse	480	504	246	8.0	3.9	6.1
12	00FNNS	Freemen	582	570	350	12.6	4.5	8.5
13	00FNNT	Humberstone and Hamilton	525	525	294	8.2	3.9	6.2
14	00FNNU	Knighon	327	320	193	4.8	2.0	3.4
15	00FNNW	Latimer	449	437	313	6.8	4.6	5.7
16	00FNNX	New Parks	842	819	548	13.1	4.7	8.9
17	00FNNY	Rushey Mead	502	527	309	6.4	3.5	5.0
18	00FNNZ	Spinney Hills	1233	1196	906	13.2	4.9	9.2
19	00FNPA	Stoneygate	856	833	586	9.7	4.3	7.1
20	00FNPB	Thurncourt	361	353	215	9.3	3.7	6.5
21	00FNPC	Westcotes	482	479	258	9.4	4.1	6.9
22	00FNPD	Western Park	347	355	175	8.2	2.7	5.6
		Leicester	13,108	13,033	8,527	9.6	4.0	6.9

These figures are suppressed as value is 1 or 2.

Source: Office for National Statistics

If you require further information please contact Joelle Bradly, Policy, Performance & Research, Chief Executive's Department, Leicestershire County Council on 0116 3055883.

**Claimant Count (JSA) Ward Data
September 2009**

Melton Borough

Code	Wards (resident-based proportions)	Melton Borough			Male	Female	Total
		Total	Last month	Last year	%	%	%
1	3IUGFT Asfordby	60	63	41	4.3	1.7	3.0
2	3IUGFU Bottesford	38	46	16	2.2	1.5	1.9
3	3IUGFW Croxton Kerrial	24	29	9	2.1	2.3	2.2
4	3IUGFX Frisby-on-the-Wreake	8	9	6	0.7	0.8	0.7
5	3IUGFY Gaddesby	10	14	6	1.3	0.7	1.0
6	3IUGFZ Long Clawson and Stathern	31	38	19	1.7	0.8	1.2
7	3IUGGA Melton Craven*	72	78	36	4.1	2.3	3.3
8	3IUGGB Melton Dorian*	93	102	30	4.0	1.6	2.8
9	3IUGGC Melton Egerton*	111	116	59	6.8	2.7	4.8
10	3IUGGD Melton Newport*	78	87	25	3.9	1.6	2.8
11	3IUGGE Melton Sysonby*	92	106	39	3.9	1.7	2.8
12	3IUGGF Melton Warwick*	84	76	37	5.0	2.8	4.0
13	3IUGGG Old Dalby	28	23	12	2.9	1.6	2.3
14	3IUGGH Somerby	16	19	9	2.1	0.8	1.5
15	3IUGGJ Waltham-on-the-Wolds	10	11	4	1.8	#	1.0
16	3IUGGK Wymondham	23	25	15	2.5	2.3	2.4
	Melton Borough	778	842	363	3.4	1.7	2.6
	* Melton Mowbray	530	565	226	4.5	2.0	3.3

These figures are suppressed as value is 1 or 2.

Market Town geographies defined by Leicestershire County Council and figures calculated using ONS Claimant Count (JSA) figures and denominators.

Source: Office for National Statistics

If you require further information please contact Joelle Bradly, Policy, Performance & Research, Chief Executive's Department, Leicestershire County Council on 0116 3055883.

**Claimant Count (JSA) Ward Data
September 2009**

North West Leicestershire District

Code		Wards (resident-based proportions)	Total	Last month	Last year	Male %	Female %	Total %
1	3IUHFZ	Appleby	28	24	8	2.9	1.4	2.2
2	3IUHGA	Ashby Castle*	17	20	11	1.2	0.0	1.0
3	3IUHGB	Ashby Holywell*	90	94	44	4.2	1.9	3.1
4	3IUHGC	Ashby Ivanhoe*	78	76	36	4.4	1.4	3.0
5	3IUHGD	Bardon**	45	48	22	3.1	1.5	2.3
6	3IUHGE	Breedon	27	29	9	2.6	1.0	1.9
7	3IUHGF	Castle Donington	140	147	62	4.3	2.1	3.3
8	3IUHGG	Coalville**	142	152	70	6.0	2.8	4.5
9	3IUHGH	Greenhill**	197	210	117	6.7	2.7	4.8
10	3IUHGJ	Hugglescote**	86	82	34	3.9	1.8	2.9
11	3IUHGK	Ibstock and Heather	140	156	60	4.4	2.0	3.3
12	3IUHGL	Kegworth and Whatton	64	60	25	3.2	1.3	2.3
13	3IUHGM	Measham	109	102	55	4.6	2.1	3.4
14	3IUHGN	Moira	80	89	42	3.4	2.1	2.8
15	3IUHGP	Oakthorpe and Donisthorpe	54	49	17	4.5	2.0	3.3
16	3IUHGQ	Ravenstone and Packington	41	40	18	4.0	0.0	2.7
17	3IUHGR	Snibston**	98	87	52	4.4	1.6	3.0
18	3IUHGS	Thringstone**	73	76	37	3.5	1.9	2.7
19	3IUHGT	Valley	84	81	51	3.9	2.2	3.1
20	3IUHGU	Whitwick**	103	125	64	3.4	1.7	2.6
NW Leicestershire District			1,696	1,747	834	4.1	1.9	3.1
* Ashby de la Zouch			185	190	91	3.6	1.5	2.6
** Coalville			744	780	396	4.6	2.1	3.4

These figures are suppressed as value is 1 or 2.

Market Town geographies defined by Leicestershire County Council and figures calculated using ONS Claimant Count (JSA) figures and denominators.

Source: Office for National Statistics

If you require further information please contact Joelle Bradly, Policy, Performance & Research, Chief Executive's Department, Leicestershire County Council on 0116 3055883.

**Claimant Count (JSA) Ward Data
September 2009**

Oadby & Wigston Borough

		Total	Last month	Last year	Male %	Female %	Total %
Code	Wards (resident-based proportions)						
1	31UJFL Oadby Brocks Hill*	76	78	39	4.4	2.5	3.5
2	31UJFM Oadby Grange*	66	67	36	1.9	1.0	1.5
3	31UJFN Oadby St. Peter's*	100	88	52	7.1	2.6	4.8
4	31UJFP Oadby Uplands*	82	90	43	4.6	1.9	3.2
5	31UJFQ Oadby Woodlands*	79	80	31	3.9	1.6	2.7
6	31UJFR South Wigston	259	268	128	8.0	3.1	5.6
7	31UJFS Wigston All Saints**	99	102	48	3.5	1.9	2.8
8	31UJFT Wigston Fields**	169	162	99	6.7	2.0	4.4
9	31UJFU Wigston Meadowcourt**	111	114	63	3.8	1.5	2.7
10	31UJFW Wigston St. Wolstan's**	104	118	63	4.0	1.5	2.8
	Oadby & Wigston Borough	1,145	1,167	602	4.7	1.9	3.3
	* Oadby	403	403	201	3.9	1.8	2.8
	** Wigston	483	496	273	4.5	1.7	3.2

These figures are suppressed as value is 1 or 2.

Market Town geographies defined by Leicestershire County Council and figures calculated using ONS Claimant Count (JSA) figures and denominators.

Source: Office for National Statistics

If you require further information please contact Joelle Bradly, Policy, Performance & Research, Chief Executive's Department, Leicestershire County Council on 0116 3055883.

**Claimant Count (JSA) Ward Data
September 2009**

			Rutland				
Code	Wards (resident-based proportions)	Total	Last month	Last year	Male	Female	Total
					%	%	
1	00FPMS Braunston and Belton	8	10	5	1.7	#	1.2
2	00FPMT Cottesmore	25	27	18	1.2	1.3	1.2
3	00FPMU Exton	13	14	5	0.8	1.5	1.0
4	00FPMW Greetham	19	17	12	1.3	1.9	1.4
5	00FPMX Ketton	27	28	9	2.0	1.6	1.8
6	00FPMY Langham	13	11	10	2.8	#	1.8
7	00FPMZ Lyddington	12	13	5	2.2	0.8	1.5
8	00FPNA Martinsthorpe	9	8	5	1.7	1.0	1.4
9	00FPNB Normanton	29	25	11	1.2	1.7	1.4
10	00FPNC Oakham North East*	37	32	13	2.3	1.5	2.0
11	00FPND Oakham North West*	33	39	12	1.9	1.6	1.8
12	00FPNE Oakham South East*	20	23	8	2.5	#	1.4
13	00FPNF Oakham South West*	35	41	10	3.4	2.0	2.7
14	00FPNG Ryhall and Casterton	29	37	13	2.0	1.2	1.7
15	00FPNH Uppingham	56	53	22	2.6	1.2	2.0
16	00FPNJ Whissendine	17	19	9	2.2	2.1	2.1
	Rutland	382	397	167	2.0	1.3	1.7
	*Oakham	125	135	43	2.4	1.3	1.9

These figures are suppressed as value is 1 or 2.

Market Town geographies defined by Leicestershire County Council and figures calculated using ONS Claimant Count (JSA) figures and denominators.

Source: Office for National Statistics

If you require further information please contact Joelle Bradly, Policy, Performance & Research, Chief Executive's Department, Leicestershire County Council on 0116 3055883.