

# Unemployment Bulletin

August 2006



LEICESTER SHIRE  
economic  
partnership

## Headline Figures

- Leicester Shire Claimant Count up by 366 people on previous month
- Oadby and Wigston Claimant Count up by 0.2% points on previous month
- Latest Leicester City ILO Unemployment rate is 8.8%

Table 1: Resident-Based Unemployment Proportions: August 2006 & Monthly Change

Area	Unemployment Proportion			Total Persons Unemployed	Change since last month	Previous months Proportion (change)	Previous years Proportion (change)
	Total	Male	Female				
Leicester Shire	2.6%	3.5%	1.6%	14,880	366	2.5% (+0.1)	2.4% (+0.2)
Leicestershire County	1.5%	2.0%	1.0%	5,803	181	1.5% (0.0)	1.3% (+0.2)
Leicester City	5.0%	7.0%	2.9%	9,077	185	4.9% (+0.1)	4.9% (+0.1)
Rutland	0.7%	0.8%	0.6%	151	1	0.7% (0.0)	0.6% (+0.1)
East Midlands	2.4%	3.3%	1.4%	63,784	1,060	2.4% (0.0)	2.1% (+0.3)
UK	2.6%	3.6%	1.5%	958,881	-1,959	2.6% (0.0)	2.4% (+0.2)

Source: Office for National Statistics (NOMIS)

Note: Leicester Shire comprises the areas of Leicestershire County and Leicester City only.

Table 2: Resident-Based Unemployment Proportions: August 2006 & Monthly Change

Districts	Unemployment Proportion	Total Persons Unemployed	Change since last month	Previous months Proportion (change)	Previous years Proportion (change)
Oadby & Wigston	2.0%	665	65	1.8% (+0.2)	1.8% (+0.2)
Charnwood	1.7%	1,757	49	1.7% (0.0)	1.5% (+0.2)
Hinckley & Bosworth	1.6%	990	13	1.5% (+0.1)	1.4% (+0.2)
North West Leicestershire	1.5%	821	2	1.5% (0.0)	1.1% (+0.4)
Blaby	1.3%	748	7	1.3% (0.0)	1.2% (+0.1)
Melton	1.3%	371	1	1.3% (0.0)	1.1% (+0.2)
Harborough	0.9%	451	44	0.8% (+0.1)	0.8% (+0.1)

Source: Office for National Statistics (NOMIS)

National Statistics will release the September 2006 unemployment figures on Wednesday 18th October 2006.

Archived Unemployment Bulletins and other reports produced by Leicester Shire Intelligence are available on the website, [www.lsint.info](http://www.lsint.info)

For more information please contact Ian Neale 0116 2658097 or Jo Miller 0116 2657341

**Table 3: Resident-Based Unemployment Proportions: in Market Towns; August 2006.**

<b>Market Towns</b>	<b>Unemployment Proportion</b>	<b>Total Persons Unemployed</b>	<b>Previous months Proportion (change)</b>	<b>Previous years Proportion (change)</b>
Loughborough (including Hathern)	2.3%	883	2.3% (0.0)	1.9% (+0.4)
Wigston	2.0%	308	1.8% (+0.2)	1.7% (+0.3)
Coalville	2.0%	405	2.0% (0.0)	1.4% (+0.6)
Hinckley (includes Burbage and Earl	1.9%	622	1.9% (0.0)	1.6% (+0.3)
Oadby	1.6%	221	1.4% (+0.2)	1.5% (+0.1)
Melton Mowbray	1.6%	245	1.6% (0.0)	1.5% (+0.1)
Market Harborough	1.3%	155	1.1% (+0.2)	1.1% (+0.2)
Ashby de la Zouch	1.1%	79	1.1% (0.0)	0.8% (+0.3)
Oakham	0.8%	46	0.8% (0.0)	0.6% (+0.2)

Source: Office for National Statistics (NOMIS)

**Table 4: Unemployment by age and duration by Local Authority District; August 2006.**

<b>District</b>	<b>18-24 years old</b>				<b>Over 25 years old</b>			
	Up to 6 months	6-12 months	13-18 months	Over 18 months	Up to 6 months	6-12 months	13-18 months	Over 18 months
Blaby	160	40	5	0	350	105	45	40
Charnwood	430	80	10	0	770	220	105	100
Harborough	110	15	0	0	220	60	20	20
Hinckley & Bosworth	225	45	0	5	470	125	40	70
Melton	100	15	0	0	165	45	15	25
North West Leicestershire	175	45	5	5	365	100	60	60
Oadby & Wigston	165	30	0	5	285	100	35	35
Leicester City	1,935	555	95	30	3,265	1,470	760	835
Leicestershire County	1,370	265	25	15	2,620	760	325	350
Rutland	50	5	0	0	60	25	5	5
Leicester Shire	3,305	825	125	45	5,885	2,230	1,085	1,185

Note: Figures are rounded to the nearest 5.

Source: Office for National Statistics (NOMIS)

Official estimates of unemployment in the UK are obtained from the Annual Population Survey (APS) using the internationally agreed International Labour Organisation (ILO) definition. The ILO definition is based on the number of people without jobs who are looking for work. The APS unemployment figures which are subject to sampling differences are only available for Local Authority (LA) areas. The Claimant Count is released on a monthly basis and is available down to ward level, so is used as a more current indicator of unemployment levels.

**Table 5: ILO Unemployment Rates**

<b>Area</b>	<b>ILO Unemployment Rate (working age)</b>	<b>Total Persons ILO Unemployed</b>	<b>Claimant Count Totals (August 2006)</b>
United Kingdom (Dec 05)	5.0%	1,416,000	958,881
East Midlands (Dec 05)	4.7%	96,200	63,784
Leicester Shire (Dec 05)	4.9%	21,800	14,880
Leicester City (Dec 05)	8.8%	11,100	9,077
Leicestershire County (Dec 05)	3.3%	10,700	5,803

Source: Annual Population Survey (NOMIS)

If you require further copies of this publication in an alternative format, such as large print please contact Ian Neale on 0116 2658097

# Changes in the ILO Unemployment Rates

Official estimates of Unemployment are produced by ONS based upon the ILO (International Labour Organisation) definition. The tables in the earlier sections show the levels of Claimant Count unemployment, which measures how many unemployed people are claiming Job Seekers Allowance (JSA). There are often large differences between the two measures with the Claimant Count often under representing the actual levels of unemployment.

ILO unemployment is a count of people who are jobless and who want to work, are available to work and are actively seeking employment. The reason that this measure is often higher than the Claimant Count is that many people are looking for employment but are not claiming any benefits so do not feature on the Claimant Count. In the following analysis ILO Unemployment will be referred to as Unemployment.

Figures 1 and 2 below show the changes in the ILO Unemployment rate over the last 4 years. In England and Wales Unemployment has remained relatively stable, hovering round 5%. Similarly the Unemployment rate in the East Midlands has only fluctuated slightly between 4.5% and 4.8% over the last 4 years.

Unemployment rates for Leicester Shire over the last 4 years have been more changeable. In Mar 2001-Feb 2002 the Unemployment rate in Leicester Shire was 4.6%, by June 2003- May 2004 this had increased slightly to 4.8%. In Apr 04-Mar 05 the rate had declined to 3.9%. This is by far the lowest level of Unemployment in the sub region in the last 4 years. Since Apr 04-Mar 05 the Unemployment rate in Leicester Shire has increased markedly and the latest data for December 05 shows that the rate is now 4.9%. This is higher than the East Midlands regional average and for the first time in the last 4 years and is on par with the national Unemployment rate.

Figure 2 shows how the fluctuations in the levels of Unemployment over the last 4 years have been split between the Local Authority areas of Leicestershire County and Leicester City. Unemployment rates in Leicester City are considerably higher than in Leicestershire County and in general the Leicester City rates have been more changeable.

From Mar 01-Feb 02 to Sep 02-Aug 03 Unemployment increased sharply in Leicester City from 7.6% to 9.8%. From this 4 year peak unemployment reduced steadily in Leicester City to 7.2% in Apr 04-Mar 05. The Unemployment rates in Leicestershire County have been more stable but reduced by 1% point between Mar 01-Feb 02 and Apr 04-Mar 05.

Since Apr 04-Mar 05 the Unemployment rate in both Leicestershire County and Leicester City has increased sharply by 0.7% points and 1.6% points respectively. In the last three quarters the ILO unemployment measure estimates that Unemployment has increased by 1,900 people in Leicester City and 2,400 in Leicestershire County.

Figure 1: Changes in ILO Unemployment rates in Leicester Shire, the East Midlands and England and Wales since 2002

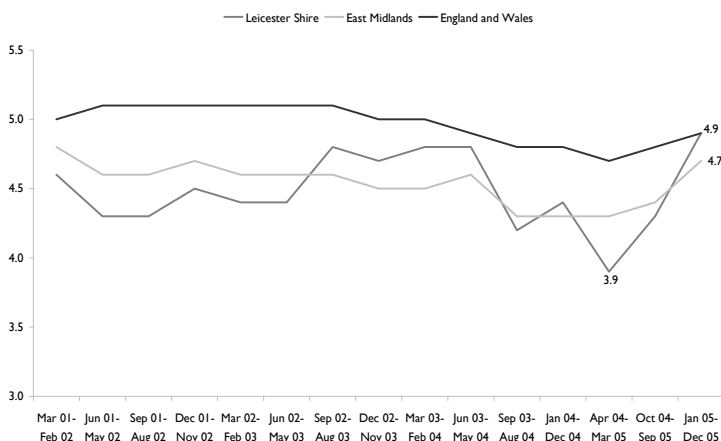
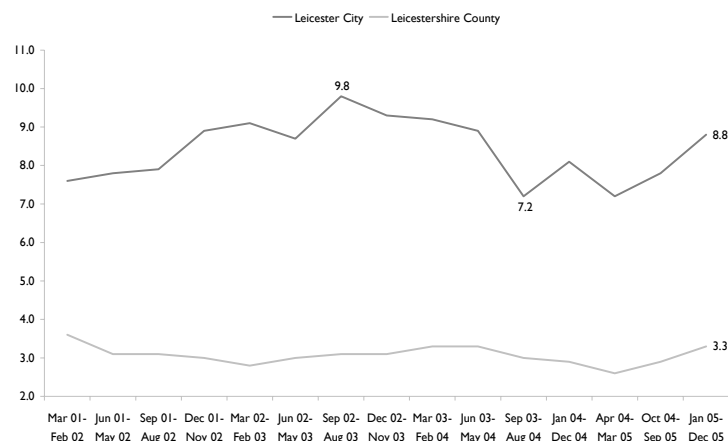


Figure 2: Changes in ILO Unemployment rates in Leicester City and Leicestershire County since 2002



**Unemployment Data  
August 2006**

**Blaby District**

Code	Wards (resident-based proportions)	Blaby District			Male %	Female %	Total %
		Male UE	Female UE	Total UE			
1	3IUBFY Blaby South	28	9	37	1.9	0.7	1.3
2	3IUBFZ Cosby with South Whetstone	13	16	29	0.8	1.1	0.9
3	3IUBGA Countesthorpe	33	11	44	1.5	0.5	1.0
4	3IUBGB Croft Hill	6	9	15	0.9	1.4	1.1
5	3IUBGC Ellis	26	14	40	1.6	0.9	1.3
6	3IUBGD Enderby and St. John's	30	8	38	2.4	0.7	1.6
7	3IUBGE Fairestone	24	8	32	1.7	0.6	1.2
8	3IUBGF Forest	22	13	35	1.0	0.6	0.8
9	3IUBGG Millfield	19	7	26	2.9	1.2	2.1
10	3IUBGH Muxloe	15	9	24	1.2	0.8	1.0
11	3IUBGJ Narborough and Littlethorpe	19	11	30	1.1	0.7	0.9
12	3IUBGK Normanton	13	6	19	1.5	0.8	1.1
13	3IUBGL North Whetstone	35	6	41	2.2	0.4	1.3
14	3IUBGM Pastures	14	12	26	0.8	0.7	0.8
15	3IUBGN Ravenhurst and Fosse	65	42	107	2.9	2.0	2.5
16	3IUBGP Saxondale	45	20	65	1.6	1.0	1.4
17	3IUBGQ Stanton and Flamville	37	26	63	1.6	1.2	1.4
18	3IUBGR Winstanley	48	29	77	2.5	1.6	2.1
	Blaby District	492	256	748	1.7	1.0	1.3

**IMPORTANT: Ward Boundary Changes.** As of the February 2004 edition of the Unemployment Bulletin the ward figures presented here refer to the new 2003 statistical wards which replace the frozen 1991 ward boundaries used previously. It is NOT possible to compare the two geographies and at present no back data is available for the new wards.

When using these figures please acknowledge Office for National Statistics as the source.

If you require further information please contact Jo Miller, Policy, Research & Information, Chief Executive's Department, Leicestershire County Council on 0116 2657341 or email: [jomiller@leics.gov.uk](mailto:jomiller@leics.gov.uk)

**Unemployment Data  
August 2006**

**Charnwood Borough**

Unemployment Data August 2006			Charnwood Borough					
Code	Wards (resident-based proportions)		Male UE	Female UE	Total UE	Male %	Female %	Total %
1	3IUCGG	Anstey	49	28	77	2.7	1.6	2.2
2	3IUCGH	Barrow and Sileby West	31	9	40	1.7	0.5	1.1
3	3IUCGJ	Birstall Wanlip	15	17	32	1.0	1.2	1.1
4	3IUCGK	Birstall Watermead	41	17	58	2.1	0.9	1.5
5	3IUCGL	East Goscote	10	4	14	1.0	0.4	0.7
6	3IUCGM	Forest Bradgate	6	10	16	0.7	1.2	0.9
7	3IUCGN	Loughborough Ashby*	63	24	87	1.9	1.0	1.5
8	3IUCGP	Loughborough Dishley and Hathern*	57	21	78	2.9	1.1	2.0
9	3IUCGQ	Loughborough Garendon*	28	20	48	1.4	1.1	1.2
10	3IUCGR	Loughborough Hastings*	152	56	208	8.3	3.4	5.9
11	3IUCGS	Loughborough Lemyngton*	112	46	158	5.8	2.8	4.4
12	3IUCGT	Loughborough Nanpantan*	13	10	23	0.6	0.6	0.6
13	3IUCGU	Loughborough Outwoods*	15	11	26	0.9	0.8	0.8
14	3IUCGW	Loughborough Shelthorpe*	90	30	120	4.7	1.6	3.2
15	3IUCGX	Loughborough Southfields*	38	22	60	2.0	1.3	1.7
16	3IUCGY	Loughborough Storer*	54	21	75	2.4	1.2	1.9
17	3IUCGZ	Mountsorrel	53	24	77	2.5	1.2	1.8
18	3IUCHA	Queniborough	11	1	12	1.3	0.1	0.7
19	3IUCHB	Quorn and Mountsorrel Castle	39	13	52	2.0	0.7	1.4
20	3IUCHC	Rothley and Thurcaston	26	10	36	1.5	0.6	1.0
21	3IUCHD	Shepshed East	43	29	72	2.0	1.4	1.7
22	3IUCHE	Shepshed West	38	18	56	1.8	0.9	1.4
23	3IUCHF	Sileby	53	22	75	2.6	1.1	1.9
24	3IUCHG	Syston East	25	14	39	1.4	0.8	1.1
25	3IUCHH	Syston West	40	13	53	2.2	0.7	1.4
26	3IUCHJ	The Wolds	15	8	23	1.7	1.0	1.3
27	3IUCHK	Thurmaston	77	55	132	2.7	2.1	2.4
28	3IUCHL	Wreake Villages	8	2	10	0.9	0.2	0.6
		Charnwood Borough	1202	555	1757	2.3	1.2	1.7

\*Loughborough including Hathern

622 261 883 3.0 1.5 2.3

**IMPORTANT: Ward Boundary Changes.** As of the February 2004 edition of the Unemployment Bulletin the ward figures presented here refer to the new 2003 statistical wards which replace the frozen 1991 ward boundaries used previously. It is NOT possible to compare the two geographies and at present no back data is available for the new wards.

When using these figures please acknowledge Office for National Statistics as the source.

If you require further information please contact Jo Miller, Policy, Research & Information, Chief Executive's Department, Leicestershire County Council on 0116 2657341 or email: [jomiller@leics.gov.uk](mailto:jomiller@leics.gov.uk)

**Unemployment Data  
August 2006**

**Harborough District**

Code	Wards (resident-based proportions)	Male UE	Female UE	Total UE	Male %	Female %	Total %
1	3IUDGD Billesdon	7	2	9	1.4	0.4	0.9
2	3IUDGE Bosworth	8	1	9	1.1	0.2	0.7
3	3IUDGF Broughton Astley - Astley	1	2	3	0.1	0.3	0.2
4	3IUDGG Broughton Astley - Broughton	8	7	15	1.0	1.0	1.0
5	3IUDGH Broughton Astley - Primethorpe	5	4	9	0.8	0.7	0.8
6	3IUDGJ Broughton Astley - Sutton	12	1	13	1.7	0.2	1.0
7	3IUDGK Dunton	4	2	6	0.5	0.3	0.4
8	3IUDGL Fleckney	15	7	22	1.0	0.5	0.7
9	3IUDGM Glen	18	6	24	1.5	0.5	1.0
10	3IUDGN Kibworth	24	13	37	1.3	0.7	1.0
11	3IUDGP Lubenham	8	2	10	0.8	0.3	0.6
12	3IUDGQ Lutterworth Brookfield	8	1	9	1.1	0.1	0.6
13	3IUDGR Lutterworth Orchard	4	5	9	0.6	0.8	0.7
14	3IUDGS Lutterworth Springs	12	2	14	1.9	0.3	1.1
15	3IUDGT Lutterworth Swift	16	6	22	2.5	1.1	1.8
16	3IUDGU Market Harborough - Great Bowden*	31	17	48	1.5	0.9	1.2
17	3IUDGW Market Harborough - Little Bowden*	22	6	28	1.7	0.5	1.1
18	3IUDGX Market Harborough - Logan*	16	6	22	1.2	0.5	0.9
19	3IUDGY Market Harborough - Welland*	35	22	57	2.1	1.4	1.8
20	3IUDGZ Misterton	8	3	11	1.0	0.4	0.7
21	3IUDHA Nevill	3	5	8	0.5	0.9	0.7
22	3IUDHB Peatling	1	0	1	0.1	0.0	0.1
23	3IUDHC Thurnby and Houghton	31	11	42	1.6	0.6	1.1
24	3IUDHD Tilton	10	1	11	1.6	0.2	0.9
25	3IUDHE Ullesthorpe	7	5	12	1.0	0.9	0.9
	Harborough District	314	137	451	1.2	0.6	0.9
	* Market Harborough	104	51	155	1.6	0.9	1.3

**IMPORTANT: Ward Boundary Changes.** As of the February 2004 edition of the Unemployment Bulletin the ward figures presented here refer to the new 2003 statistical wards which replace the frozen 1991 ward boundaries used previously. It is NOT possible to compare the two geographies and at present no back data is available for the new wards.

When using these figures please acknowledge Office for National Statistics as the source.

If you require further information please contact Jo Miller, Policy, Research & Information, Chief Executive's Department, Leicestershire County Council on 0116 2657341 or email: [jomiller@leics.gov.uk](mailto:jomiller@leics.gov.uk)

Unemployment Data  
August 2006

Hinckley & Bosworth Borough

Code	Wards (resident-based proportions)	Male UE	Female UE	Total UE	Male %	Female %	Total %
1	31UEFU Ambien	13	5	18	1.1	0.5	0.8
2	31UEFW Barlestone Nailstone & Osbaston	13	8	21	1.2	0.8	1.0
3	31UEFX Barwell	86	45	131	3.0	1.7	2.3
4	31UEFY Burbage St. Catherines & Lash Hill	58	22	80	3.2	1.4	2.4
5	31UEFZ Burbage Sketchley and Stretton	41	12	53	1.4	0.5	1.0
6	31UEGA Cadeby Carlton & Market Bosworth	10	6	16	1.0	0.7	0.8
7	31UEGB Earl Shilton	92	49	141	3.2	1.8	2.5
8	31UEGC Groby	28	16	44	1.3	0.8	1.0
9	31UEGD Hinckley Castle*	61	28	89	3.0	1.6	2.4
10	31UEGE Hinckley Clarendon*	53	28	81	2.2	1.2	1.7
11	31UEGF Hinckley De Montfort*	69	23	92	2.3	0.8	1.6
12	31UEGG Hinckley Trinity*	62	24	86	2.8	1.2	2.0
13	31UEGH Markfield Stanton and Fieldhead	16	7	23	0.9	0.4	0.7
14	31UEGJ Newbold Verdon with Desford & Peckleton	29	25	54	1.1	1.1	1.1
15	31UEGK Ratby Bagworth and Thornton	26	19	45	1.5	1.1	1.3
16	31UEGL Twycross & Witherley with Sheepy	12	4	16	1.2	0.4	0.9
	Hinckley & Bosworth District	669	321	990	2.0	1.1	1.6
	* Hinckley (inc. Burbage & Earl Shilton)	436	186	622	2.5	1.2	1.9

**IMPORTANT: Ward Boundary Changes.** As of the February 2004 edition of the Unemployment Bulletin the ward figures presented here refer to the new 2003 statistical wards which replace the frozen 1991 ward boundaries used previously. It is NOT possible to compare the two geographies and at present no back data is available for the new wards.

When using these figures please acknowledge Office for National Statistics as the source.

If you require further information please contact Jo Miller, Policy, Research & Information, Chief Executive's Department, Leicestershire County Council on 0116 2657341 or email: [jomiller@leics.gov.uk](mailto:jomiller@leics.gov.uk)

**Unemployment Data  
August 2006**

			Leicester City					
Code	Wards (resident-based proportions)		Male UE	Female UE	Total UE	Male %	Female %	Total %
1	00FNNF	Abbey	360	113	473	9.4	3.1	6.3
2	00FNNG	Aylestone	146	65	211	4.3	2.0	3.2
3	00FNNH	Beaumont Leys	444	187	631	9.8	4.0	6.9
4	00FNNJ	Belgrave	204	137	341	6.3	4.2	5.3
5	00FNNK	Braunstone Park & Rowley Fields	410	145	555	8.7	3.0	5.8
6	00FNNL	Castle	456	128	584	7.5	2.5	5.2
7	00FNNM	Charnwood	370	150	520	11.4	4.7	8.1
8	00FNNN	Coleman	319	139	458	8.2	3.7	6.0
9	00FNNP	Evington	129	61	190	4.7	2.3	3.5
10	00FNNQ	Eyres Monsell	243	95	338	8.1	3.1	5.6
11	00FNNR	Fosse	168	73	241	4.4	2.2	3.4
12	00FNNS	Freemen	269	93	362	8.4	2.7	5.4
13	00FNNT	Humberstone and Hamilton	203	93	296	5.5	2.7	4.1
14	00FNNU	Knighton	168	55	223	3.2	1.1	2.2
15	00FNNW	Latimer	223	142	365	6.1	3.9	5.0
16	00FNNX	New Parks	457	143	600	10.3	3.1	6.7
17	00FNNY	Rushey Mead	193	143	336	3.8	3.0	3.4
18	00FNNZ	Spinney Hills	802	221	1023	11.4	3.4	7.6
19	00FNPA	Stoneygate	461	197	658	7.6	3.5	5.6
20	00FNPB	Thurncourt	144	63	207	5.3	2.4	3.9
21	00FNPC	Westcotes	193	70	263	5.5	2.1	3.9
22	00FNPD	Western Park	140	62	202	4.3	2.1	3.2
		Leicester	6,502	2,575	9,077	7.0	2.9	5.0

**IMPORTANT: Ward Boundary Changes.** As of the February 2004 edition of the Unemployment Bulletin the ward figures presented here refer to the new 2003 statistical wards which replace the frozen 1991 ward boundaries used previously. It is NOT possible to compare the two geographies and at present no back data is available for the new wards.

When using these figures please acknowledge Office for National Statistics as the source.

If you require further information please contact Jo Miller, Policy, Research & Information, Chief Executive's Department, Leicestershire County Council on 0116 2657341 or email: [jomiller@leics.gov.uk](mailto:jomiller@leics.gov.uk)



Unemployment Data  
August 2006

Melton Borough

Code	Wards (resident-based proportions)	Male UE	Female UE	Total UE	Male %	Female %	Total %
1	3IUGFT Asfordby	17	13	30	1.7	1.4	1.5
2	3IUGFU Bottesford	12	7	19	1.1	0.7	0.9
3	3IUGFW Croxton Kerrial	3	5	8	0.6	1.0	0.8
4	3IUGFX Frisby-on-the-Wreake	8	4	12	1.3	0.7	1.0
5	3IUGFY Gaddesby	9	3	12	1.7	0.6	1.2
6	3IUGFZ Long Clawson and Stathern	12	7	19	0.9	0.6	0.8
7	3IUGGA Melton Craven*	25	12	37	2.0	1.1	1.6
8	3IUGGB Melton Dorian*	31	10	41	1.9	0.7	1.3
9	3IUGGC Melton Egerton*	41	20	61	3.5	1.9	2.7
10	3IUGGD Melton Newport*	22	6	28	1.4	0.4	0.9
11	3IUGGE Melton Sysonby*	26	12	38	1.6	0.8	1.2
12	3IUGGF Melton Warwick*	29	11	40	2.9	1.1	2.0
13	3IUGGG Old Dalby	6	2	8	1.0	0.4	0.7
14	3IUGGH Somerby	5	0	5	0.9	0.0	0.5
15	3IUGGJ Waltham-on-the-Wolds	3	0	3	0.6	0.0	0.3
16	3IUGGK Wymondham	10	0	10	1.9	0.0	1.0
	Melton Borough	259	112	371	1.7	0.8	1.3
	* Melton Mowbray	174	71	245	2.1	0.9	1.6

**IMPORTANT: Ward Boundary Changes.** As of the February 2004 edition of the Unemployment Bulletin the ward figures presented here refer to the new 2003 statistical wards which replace the frozen 1991 ward boundaries used previously. It is NOT possible to compare the two geographies and at present no back data is available for the new wards.

When using these figures please acknowledge Office for National Statistics as the source.

If you require further information please contact Jo Miller, Policy, Research & Information, Chief Executive's Department, Leicestershire County Council on 0116 2657341 or email: [jomiller@leics.gov.uk](mailto:jomiller@leics.gov.uk)

Unemployment Data  
August 2006

North West Leicestershire District

Code	Wards (resident-based proportions)	Male UE	Female UE	Total UE	Male %	Female %	Total %
1	31UHFZ Appleby	8	3	11	1.2	0.5	0.9
2	31UHGA Ashby Castle*	5	6	11	0.6	0.8	0.7
3	31UHGB Ashby Holywell*	29	11	40	1.9	0.8	1.4
4	31UHGC Ashby Ivanhoe*	19	9	28	1.4	0.7	1.1
5	31UHGD Bardon**	10	5	15	1.3	0.7	1.0
6	31UHGE Breedon	10	3	13	1.3	0.4	0.9
7	31UHGF Castle Donington	43	16	59	1.9	0.8	1.4
8	31UHGG Coalville**	44	19	63	3.1	1.5	2.3
9	31UHGH Greenhill**	108	37	145	5.2	2.0	3.7
10	31UHGJ Hugglescote**	23	11	34	1.7	0.9	1.3
11	31UHGK Ibstock and Heather	42	19	61	1.9	1.0	1.5
12	31UHGL Kegworth and Whatton	27	7	34	1.9	0.6	1.3
13	31UHGM Measham	33	13	46	2.1	0.9	1.5
14	31UHGN Moira	28	15	43	1.9	1.1	1.5
15	31UHGP Oakthorpe and Donisthorpe	23	4	27	3.0	0.6	1.9
16	31UHGQ Ravenstone and Packington	11	4	15	1.5	0.6	1.0
17	31UHGR Snibston**	30	23	53	1.9	1.5	1.7
18	31UHGS Thringstone**	25	13	38	1.7	1.0	1.4
19	31UHGT Valley	16	12	28	1.2	1.0	1.1
20	31UHGU Whitwick**	36	21	57	1.7	1.1	1.4
	NW Leicestershire District	570	251	821	2.0	1.0	1.5
	* Ashby de la Zouch	53	26	79	1.4	0.8	1.1
	** Coalville	276	129	405	2.6	1.3	2.0

**IMPORTANT: Ward Boundary Changes.** As of the February 2004 edition of the Unemployment Bulletin the ward figures presented here refer to the new 2003 statistical wards which replace the frozen 1991 ward boundaries used previously. It is NOT possible to compare the two geographies and at present no back data is available for the new wards.

When using these figures please acknowledge Office for National Statistics as the source.

If you require further information please contact Jo Miller, Policy, Research & Information, Chief Executive's Department, Leicestershire County Council on 0116 2657341 or email: [jomiller@leics.gov.uk](mailto:jomiller@leics.gov.uk)

**Unemployment Data  
August 2006**

**Oadby & Wigston Borough**

Code	Wards (resident-based proportions)	Male UE	Female UE	Total UE	Male %	Female %	Total %
1	31UJFL Oadby Brocks Hill*	26	11	37	2.2	1.0	1.6
2	31UJFM Oadby Grange*	22	14	36	1.0	0.7	0.9
3	31UJFN Oadby St. Peter's*	36	15	51	3.4	1.5	2.5
4	31UJFP Oadby Uplands*	44	13	57	3.4	1.0	2.2
5	31UJFQ Oadby Woodlands*	22	18	40	1.7	1.4	1.5
6	31UJFR South Wigston	101	35	136	4.3	1.6	3.0
7	31UJFS Wigston All Saints**	57	16	73	2.8	0.9	1.9
8	31UJFT Wigston Fields**	55	35	90	2.9	2.0	2.5
9	31UJFU Wigston Meadowcourt**	55	24	79	2.5	1.2	1.9
10	31UJFW Wigston St. Wolstan's**	44	22	66	2.3	1.3	1.8
	Oadby & Wigston Borough	462	203	665	2.6	1.2	2.0
	* Oadby	150	71	221	2.2	1.1	1.6
	** Wigston	211	97	308	2.6	1.3	2.0

**IMPORTANT: Ward Boundary Changes.** As of the February 2004 edition of the Unemployment Bulletin the ward figures presented here refer to the new 2003 statistical wards which replace the frozen 1991 ward boundaries used previously. It is NOT possible to compare the two geographies and at present no back data is available for the new wards.

When using these figures please acknowledge Office for National Statistics as the source.

If you require further information please contact Jo Miller, Policy, Research & Information, Chief Executive's Department, Leicestershire County Council on 0116 2657341 or email: [jomiller@leics.gov.uk](mailto:jomiller@leics.gov.uk)

Unemployment Data  
August 2006

			Rutland					
Code	Wards (resident-based proportions)		Male UE	Female UE	Total UE	Male %	Female %	Total %
1	00FPMS	Braunston and Belton	4	0	4	1.1	0.0	0.6
2	00FPMT	Cottesmore	6	2	8	0.6	0.2	0.4
3	00FPMU	Exton	1	0	1	0.1	0.0	0.1
4	00FPMW	Greetham	3	1	4	0.3	0.3	0.3
5	00FPMX	Ketton	4	4	8	0.5	0.6	0.6
6	00FPMY	Langham	0	0	0	0.0	0.0	0.0
7	00FPMZ	Lyddington	6	1	7	1.5	0.3	0.9
8	00FPNA	Martinsthorpe	1	4	5	0.3	1.3	0.7
9	00FPNB	Normanton	6	5	11	0.6	0.6	0.6
10	00FPNC	Oakham North East*	7	5	12	0.8	0.6	0.7
11	00FPND	Oakham North West*	13	6	19	1.3	0.7	1.0
12	00FPNE	Oakham South East*	6	3	9	1.0	0.6	0.8
13	00FPNF	Oakham South West*	10	2	12	1.4	0.3	0.9
14	00FPNG	Ryhall and Casterton	12	11	23	1.4	1.4	1.4
15	00FPNH	Uppingham	15	8	23	1.2	0.8	1.0
16	00FPNJ	Whissendine	2	3	5	0.5	0.8	0.7
		Rutland	96	55	151	0.8	0.6	0.7
		*Oakham	36	16	52	1.1	0.5	0.9

**IMPORTANT: Ward Boundary Changes.** As of the February 2004 edition of the Unemployment Bulletin the ward figures presented here refer to the new 2003 statistical wards which replace the frozen 1991 ward boundaries used previously. It is NOT possible to compare the two geographies and at present no back data is available for the new wards.

When using these figures please acknowledge Office for National Statistics as the source.

If you require further information please contact Jo Miller, Policy, Research & Information, Chief Executive's Department, Leicestershire County Council on 0116 2657341 or email: [jomiller@leics.gov.uk](mailto:jomiller@leics.gov.uk)