

Community Cohesion Project Team and LPIG  
Draft  
3 October 2006

# The Diversity of Leicester: A Demographic Profile

October 2006

DRAFT



Prepared by the Leicester City Council and the Leicester Partnership

## Foreword

This booklet paints a picture of the people of Leicester. It tells how many people live in the city, their age and ethnicity, the faiths they follow and the languages they speak. It also reveals where and how they live, and many of the important issues facing the different groups of people who choose to live here.

The purpose of this booklet is to provide a ready source of information in an easily accessible format for managers and other officers of local agencies responsible for designing and delivering services to the people of Leicester.

This story of Leicester is based on both hard statistical data and soft local intelligence. Inevitably statistics become dated and trends change and, while important for revealing broad pictures, they can also fail to highlight interesting and important local information.

The story provides a snapshot in time. It describes both the now, and what is expected in the future: how Leicester compares with other cities both in the East Midlands region and elsewhere, and to averages for England.

Only the most significant information has been included and inevitably much has been left out. Wherever possible, the location of more extensive information has been included for those who would like to know more. Of special importance is the detailed statistical evidence on Leicester brought together in the Leicester Shire Online Research Atlas, known as LSORA ([www.lsora.org](http://www.lsora.org)).

This booklet has been prepared by the Community Cohesion Project Team and the Leicester Partnership Information Group - both sub-groups of the Leicester Partnership.

It is hoped that through this booklet the rich diversity of the people who live in Leicester may be more readily understood.

Roger Blackmore  
Leader, Leicester City Council  
Bernard Greaves  
Chair, Leicester Partnership

# Contents

<b>Population Information: Age, Ethnicity, Faiths, Languages and New Arrivals</b>	<b>1</b>	
Age	1	
Ethnicity	1	
Ethnicity and Population Projections	3	
Faiths in Leicester	3	
Languages in Leicester	5	
New Arrivals	6	
<b>Socio-Economic Information: Poverty, Health, Employment, &amp; Education</b>	<b>7</b>	
Poverty and Deprivation	9	
Employment and Ethnicity	10	
Skills	11	
Educational Attainment	12	
Health	14	
Housing	14	
<b>Community Cohesion</b>	<b>15</b>	
Sense of Belonging	15	
Sites of Cross-Cultural Mixing	15	
Participation		
<b>Data Sources</b>	<b>16</b>	
<b>Tables, Charts, Maps and Diagrams</b>		
Chart 1	Population Pyramid of Leicester (against UK average)	1
Chart 2	Leicester Population by age and ethnicity	2
Chart 3	Percentage of Primary School Pupils where first language is known or believed to be other than English (Jan 2005)	6
Chart 4	Free School Meals, January 2006	10
Chart 5	Employment rates by ethnic Groups	11
Chart 6	GCSE Results – 5 or more A*-C Ethnic Groups 2005	13
Chart 7	GCSE Results – 5 or more A*-C Ethnicity & Gender 2005	13
Chart 8	Percent of People Describing their General Health as 'Good'	15
Table 1	Ethnic composition of Leicester	2
Table 2	Average age of ethnic groups in Leicester	2
Table 3	Patterns of segregation in Leicester and other English cities	8
Table 4	Asian presence in deprived areas, 2001	9
Table 5	Employment rates amongst ethnic groups, England 2002/03	11
Table 6	% of working population in Leicester with no qualifications	12
Table 7	Literacy and Numeracy Levels in Leicester	12
Table 8	Satisfaction with Leicester as a place to live	16
Table 9	Sense of Belonging in Leicester	16
Table 10	Sites of Cross-Cultural Interaction	16
Map 1	Distribution of Hindu communities in Leicester	4
Map 2	Distribution of Muslim communities in Leicester	4
Map 3	Neighbourhoods by socio-economic characteristics	7
Map 4	Top 5% Deprived Areas Nationally in Leicester	10
Map 5	Distribution of GCSE scores in Leicester, 2001/02	14
Diagram 1	Faith communities in Leicester	5
Diagram 2	Additional languages other than English spoken in Leicester	5

## Population Information: Age, Ethnicity, Faiths, Languages and New Arrivals

The population of Leicester was 279,921 as measured by the 2001 Census. The 2004 mid-year estimate was 285,100. Mid-year estimates are produced every year and are based on Census information.

### Ethnicity

Leicester has a large and diverse ethnic minority population. Leicester City Council estimates suggest that 60% of Leicester's population is ethnically white and 40% have an ethnic minority background. The 2001 Census estimated the difference as 64% to 36%, however there is anecdotal evidence that a number of people, particularly those living in the inner city were not counted and between 2002 onwards many people of Somali origin moved into the city.

Amongst the ethnic minority people of Leicester, 30%+ have an Asian background. They are mainly Indians from either East Africa or from Gujarat in India. Other much smaller Asian populations include Bangladeshi and Pakistani communities. The black population in Leicester comprise two groups – those of West Indian origin and those of African origin, including in the last six years a significant number from Somalia.

Compared to other cities in England (outside London), Leicester is unique in that its predominant ethnic minority community is of Indian origin, and Hindu in terms of religion, rather than Pakistan or Bangladeshi origin, and Muslim in religion, as in other English cities.

**Table 1: Ethnic composition of Leicester from 2001 Census**

Ethnicity Breakdown (%)	Leicester	England & Wales
White	63.9	91.3
Mixed	2.3	1.3
Asian	29.9	4.4
Asian or Asian British: Indian	25.7	2.0
Asian or Asian British: Pakistani	1.5	1.4
Asian or Asian British: Bangladeshi	0.7	0.5
Black	3.1	2.2
Black or Black British: Caribbean	1.7	1.1
Black or Black British: African	1.2	0.9
Other	0.8	0.9

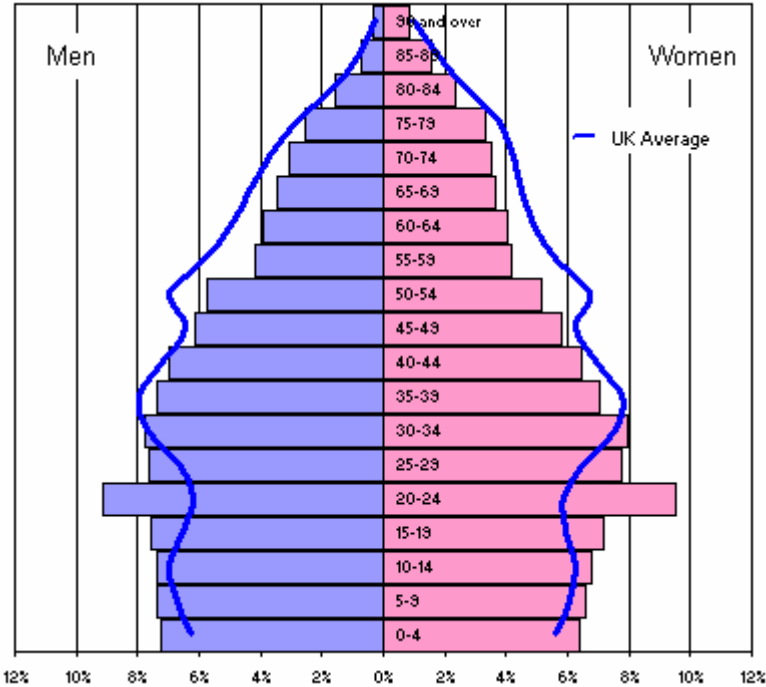
Source: 2001 Census ([www.neighbourhood.statistics.gov.uk](http://www.neighbourhood.statistics.gov.uk))

### Age

Leicester has a younger than average population. The average age is 35.5, compared to 38.7 for England and Wales, shown by the population pyramid Chart 1. The spike amongst 20-24 year olds can be explained by the fact that Leicester has a large student population.

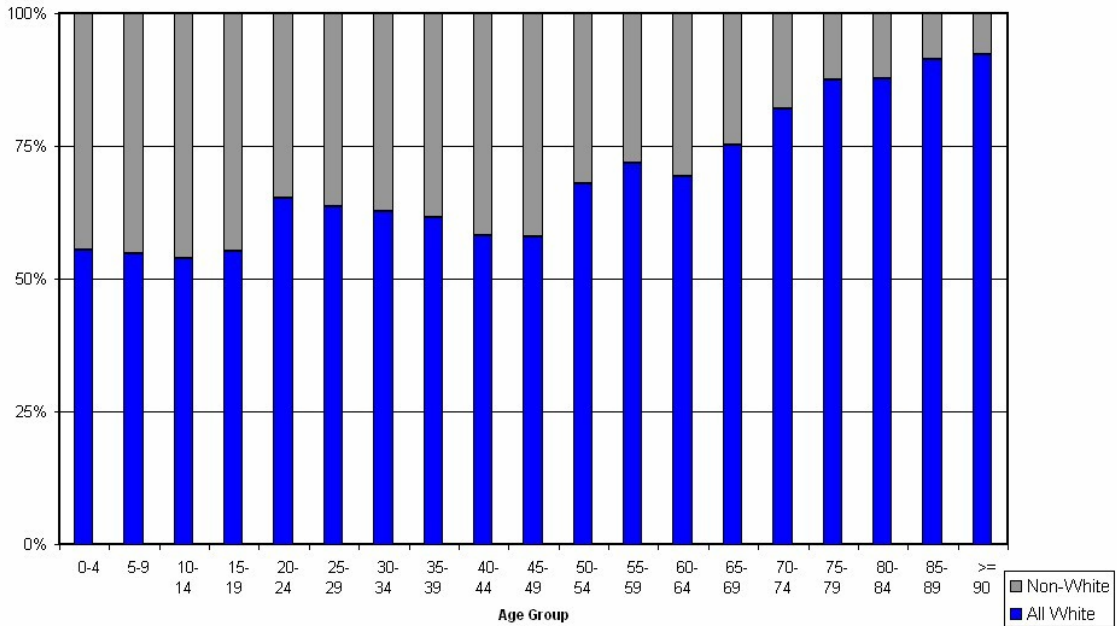
The average age of the ethnic minority population in Leicester is, on average, ten years younger than that of the white population. The average age of new arrivals tends to be younger than that of established ethnic minority populations.

**Chart 1: Population Pyramid of Leicester (against UK average)**



Source: National Statistics ([www.statistics.gov.uk](http://www.statistics.gov.uk))

**Chart 2: Leicester Population by age and ethnicity**



Source: 2001 Census, Information Services Leicester City Council  
**Table 2: Average age of ethnic groups in Leicester**

Ethnicity	Average Age
All white	38.39

All non white	30.36
Black	28.1
Indian	31.82
Pakistani	25.99
Bangladeshi	24.12

Source: 2001 Census ([www.neighbourhood.statistics.gov.uk](http://www.neighbourhood.statistics.gov.uk))

## Ethnicity and Population Projections

There was a 7% increase in ethnic minority residents between the 1991 Census and the 2001 Census<sup>1</sup>. If this trend continues then Leicester is likely to become amongst the first cities in England, outside of London, to have a majority of people with an ethnic minority background. This is due to a range of factors including higher birth rates amongst ethnic minority groups, increases in existing communities through family consolidations, increases in the number of new arrivals and white migration out of the city. If this trend is to continue, Leicester may reach this milestone sometime after 2011.

## Faiths in Leicester

The largest faith communities in Leicester are the Christian communities at 44.7% of the population, followed by Hindu at 14.7%, Muslim at 11%, and the Sikh at 4.2%. In the 2001 Census 17.4% stated they had no religion. 7% did not indicate their religion.

According to xxx xxx Leicester has one of the highest rates of attendance at faith based activities in England.

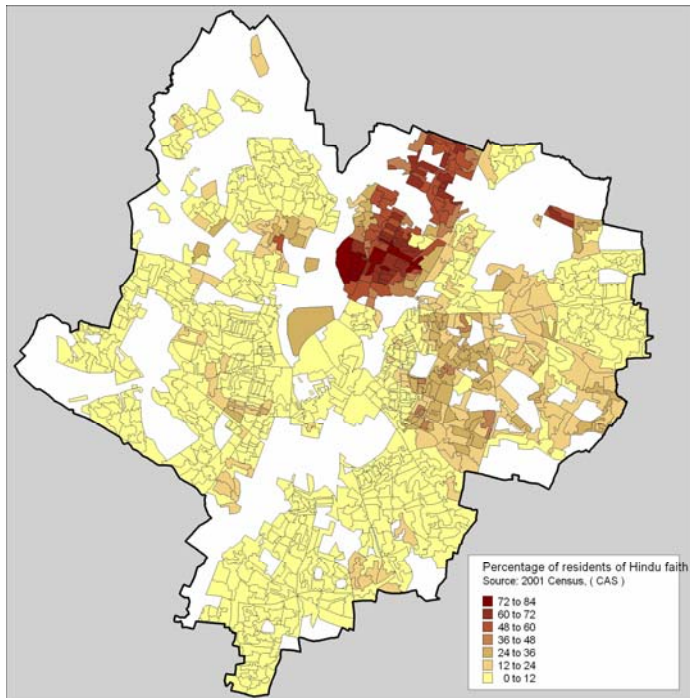
Leicester has 243 places of worship including 42 mosques, 16 Hindu temples, 6 Sikh Gurdwaras, and 2 Jewish synagogues. It also has xx Anglican churches, xx Roman Catholic churches, and xx protestant and other non-conformist churches. Within the Christian community in Leicester, there is a growing presence of black-led churches such as Pentecostal, Seventh-day Adventist and Baptists.

The following two maps show that the Hindu and Muslim communities are very spatially concentrated in Leicester: Hindus in the north of the city, and Muslims to the east of the city centre. There are no similar concentrations observed for other religions.

---

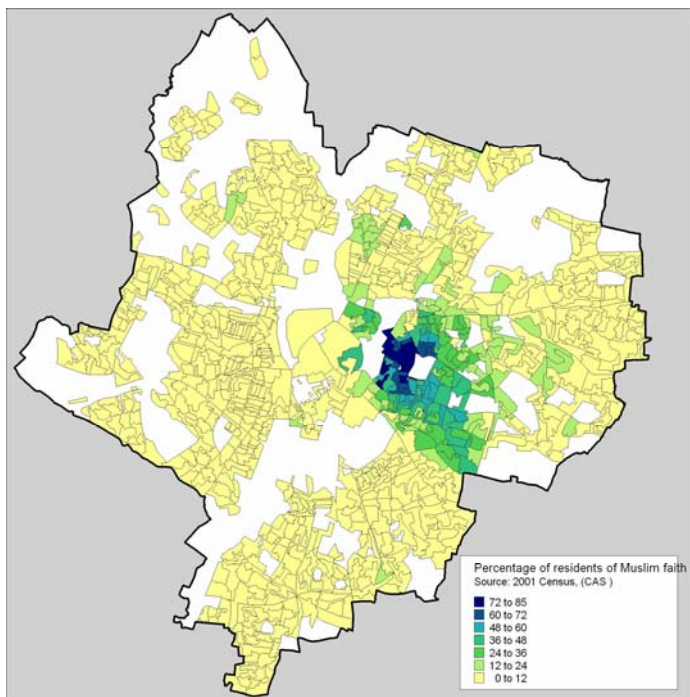
<sup>1</sup> It should be noted that the 1991 and 2001 Census data are not directly comparable. The 2001 data includes students and other 'estimates'.

**Map 1: Distribution of Hindu Communities in Leicester<sup>2</sup>**



Source: 2001 Census, Information Services Leicester City Council

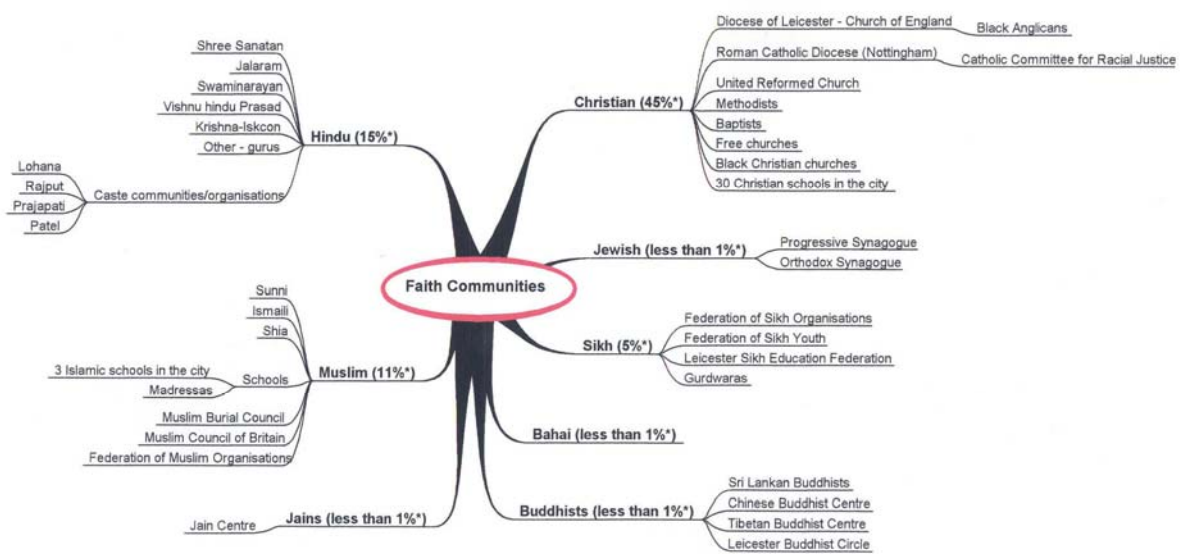
**Map 2: Distribution of Muslim Communities in Leicester**



Source: 2001 Census, Information Services Leicester City Council

<sup>2</sup> Further detailed interactive maps on this, and other topics, are available on [www.lsora.org](http://www.lsora.org)

**Diagram 1: Faith communities in Leicester**



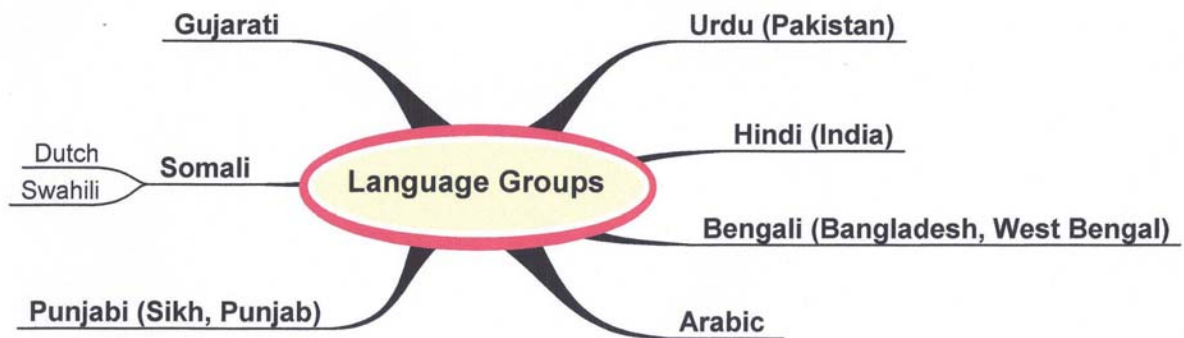
Faith communities ver 2.emm - 12/07/2006

Source: Leicester City Council

## Languages in Leicester

Apart from English there are seven other languages commonly spoken in the city. Gujarati is spoken by 16% of the city's residents. Recent research has suggested that 7% of residents have difficulty reading English (2005 Residents' Survey/MORI).

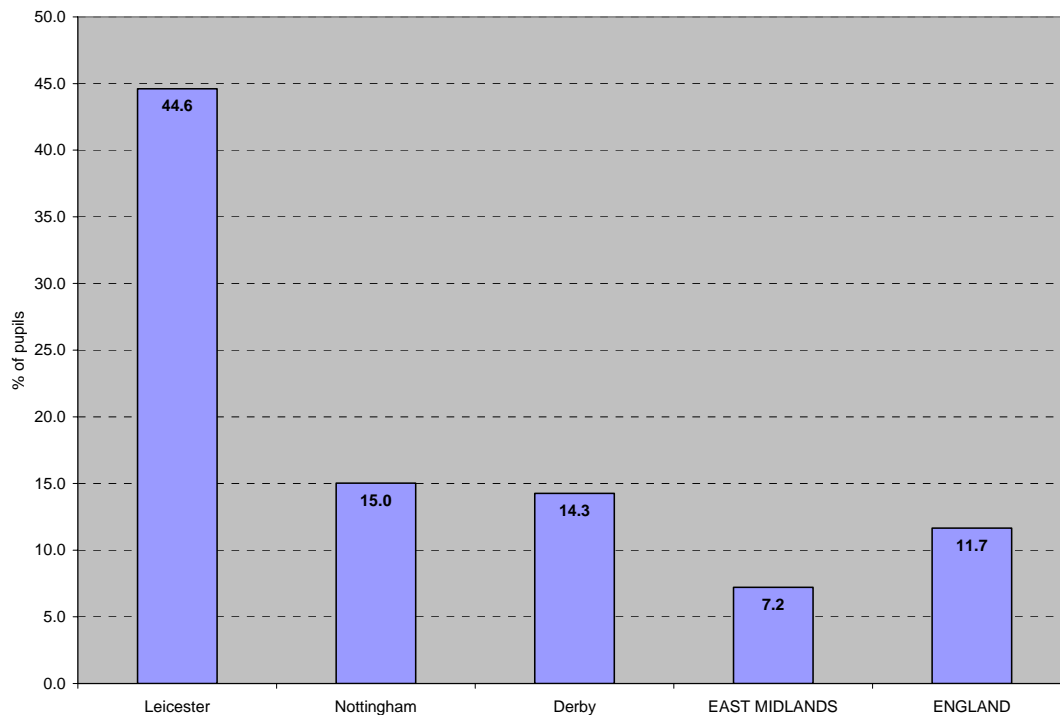
**Diagram 2: Additional languages spoken in Leicester**



Language groups ver 2.emm - 12/07/2006

In our primary schools, the proportion of children whose first language is known, or believed to be, other than English, is significantly higher than other cities within the region, or within the UK.

**Chart 3: Percentage of Primary School Pupils where first language is known or believed to be other than English (Jan 2005)**



Source: *Department for Education and Skills (DfES)*  
<http://www.dfes.gov.uk/rsgateway>

### **New Arrivals**

The majority of Leicester's Somali community arrived in the years following the 2001 Census and consequently they do not appear in the census statistics. Current assessments suggest that there are approximately 6 -10,000 people of Somali origin now living in the city. Many of the Somali population are in family units and many are European Union nationals having received refugee status in the Netherlands, Denmark or Sweden.

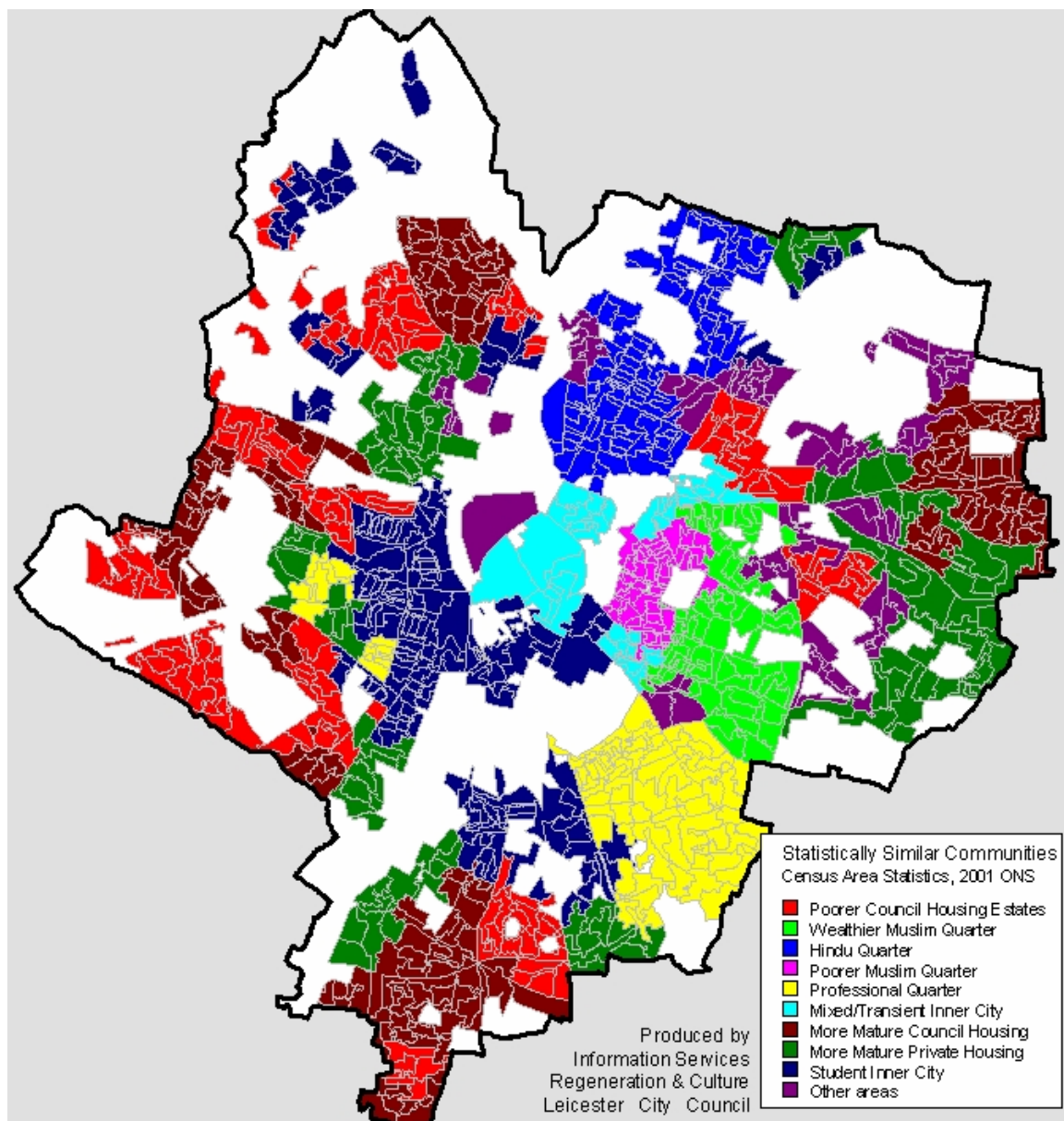
Leicester has often been a home to refugee and asylum seekers. In recent years new groups of people have come to the city, mainly from Iraq, Afghanistan, Zimbabwe, Kosovo, Iran and Eastern Europe. Many of these newer communities are made up of single young men.

Leicester has always been home to a small but long standing Polish community and, since Poland's accession to the European Union in 2002, there has been a noticeable increase in Polish new arrivals in the city and surrounding region. Current Home Office estimates put this figure at around 17-18,000.

## Socio-Economic Information: Poverty, Health, Employment, Education and Community Safety

Within all cultures there is a tendency for members of distinct communities to cluster together. Traditionally age, employment status and social class have been ways by which communities have been geographically segregated. Within Leicester successive waves of people from other parts of the world has meant that characteristics such as ethnicity and religion have had to be incorporated into this as well. The result is the following spatial pattern across the city showing neighbourhood clusters of statistically similar neighbourhoods based on socio-economic data.

**Map 3: Neighbourhoods by Socio-Economic Characteristics**



Source: Information Services, Leicester City Council

In Leicester there are clear differences in patterns of age and ethnicity with white residents on average ten years older than non-white residents, and predominantly living in peripheral housing areas of the city. Deprivation can also affect these communities and the western areas of the city show higher levels of deprivation than the eastern areas.

The inner city is quite mixed with the data showing significant differences between more and less wealthy Muslim communities. No significant pattern emerges for the Hindu communities in the city. Other significant communities include students and young professionals who tend to be concentrated mainly in the southern and western parts of the city.

**Table 3: Patterns of segregation in Leicester and other English cities**

Rank	White/Non-White		White/Asian		White/Black	
	City	ID Score	City	ID Score	City	ID Score
1	Blackburn	0.72	Blackburn	0.73	Barnsley	0.73
2	Bradford	0.71	Bradford	0.73	Sunderland	0.65
3	Burnley	0.68	Rochdale	0.71	Burnley	0.63
4	Rochdale	0.67	Burnley	0.7	Middlesbrough	0.62
5	Huddersfield	0.62	Derby	0.68	Leeds	0.6
6	Bolton	0.62	Huddersfield	0.66	Liverpool	0.59
7	Sheffield	0.59	Preston	0.66	Blackpool	0.59
8	Preston	0.59	Bolton	0.65	Manchester	0.59
9	Derby	0.59	Sheffield	0.64	Wakefield	0.58
10	<b>Leicester</b>	<b>0.59</b>	Manchester	0.63	Huddersfield	0.57
11	Birmingham	0.58	Birmingham	0.63	Grimsby	0.56
12	Middlesbrough	0.57	Middlesbrough	0.62	Sheffield	0.56
13	Manchester	0.57	<b>Leicester</b>	<b>0.62</b>	Bristol	0.54
14	Stoke	0.54	Wakefield	0.62	Birkenhead	0.53
15	Leeds	0.54	Stoke	0.61	Newcastle	0.53
16	Wakefield	0.52	Gloucester	0.59	Blackburn	0.52
17	Doncaster	0.49	Leeds	0.57	Birmingham	0.52
18	Liverpool	0.49	Doncaster	0.56	London	0.51
19	Newcastle	0.48	Peterborough	0.55	Warrington	0.51
20	Nottingham	0.48	Nottingham	0.55	Doncaster	0.5
21	Peterborough	0.47	Newcastle	0.53	Bradford	0.49
22	Hull	0.45	Liverpool	0.52	Nottingham	0.49
23	Sunderland	0.44	Hull	0.51	Preston	0.48
24	London	0.44	Luton	0.51	Plymouth	0.47
25	Gloucester	0.43	London	0.5	<b>Leicester</b>	<b>0.47</b>
26	Southampton	0.42	Portsmouth	0.49	Stoke	0.47
27	Bristol	0.42	Southampton	0.49	Reading	0.47
28	Luton	0.41	Sunderland	0.48	York	0.47
29	Portsmouth	0.41	Wigan	0.47	Southend	0.46
30	Coventry	0.4	Plymouth	0.47	Hull	0.46
31	Telford	0.39	Barnsley	0.47	Bolton	0.45
32	Barnsley	0.39	Grimsby	0.47	Portsmouth	0.45
33	Plymouth	0.38	Ipswich	0.47	Bournemouth	0.45
34	York	0.37	Telford	0.45	Derby	0.44
35	Reading	0.36	Coventry	0.45	Norwich	0.44

Source: State of the English Cities Report, ODPM

In terms of segregation between the white, Asian and Black residents of Leicester compared to other cities, the pattern of segregation suggests a high levels of segregation between white and non-white residents and specifically between white and Asian residents. The pattern between white and black residents is much less marked.

**Table 4: Asian presence in deprived areas, 2001**

City	Asian Presence in most deprived areas (%) 'A'	Asian Presence in all other areas (%) 'B'	Concentration Index: Ratio of Asian presence (A/B)
Derby	24.8	4.6	5.4
Peterborough	27.9	5.2	5.4
Bradford	42.1	8.3	5.1
Preston	19.4	3.8	5.1
Burnley	25.4	7.1	3.6
Rochdale	20	6.1	3.3
Sheffield	8.4	2.7	3.1
Huddersfield	25.8	9.3	2.8
Bolton	18.2	6.5	2.8
Birmingham	25.8	9.6	2.7
Manchester	10.3	3.9	2.6
Ipswich	4.1	1.6	2.6
Leeds	8.3	3.5	2.4
Coventry	19.3	9.6	2
Nottingham	6.1	3.1	2
Luton	34.6	17.9	1.9
Blackburn	27.3	18.8	1.5
London	15.6	10.4	1.5
Gloucester	3.7	2.7	1.4
Milton Keynes	3.1	3.7	0.8
Northampton	2.7	3.3	0.8
<b>Leicester</b>	<b>17.2</b>	<b>23.1</b>	<b>0.7</b>
Oxford	2.9	4.8	0.6

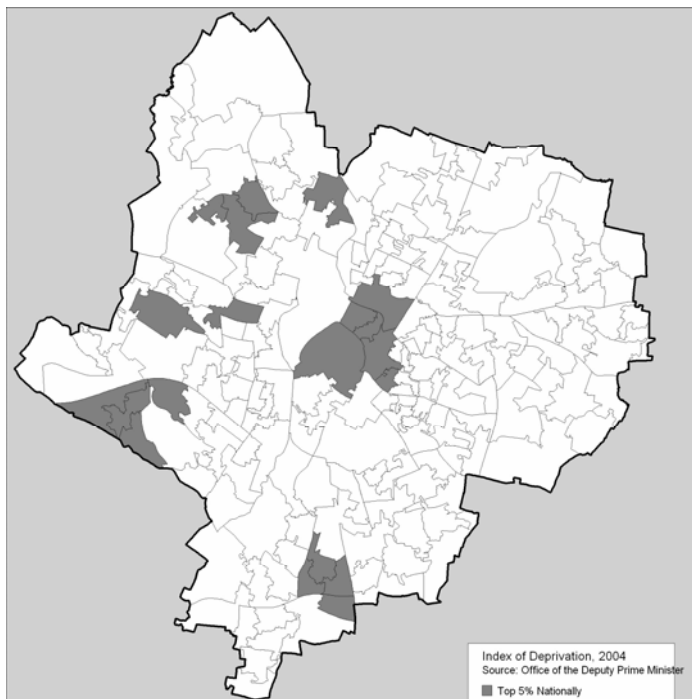
Source: *State of the English Cities Report, ODPM*

Leicester, unlike other cities in England with large ethnic minority communities, shows that Asian residents are not concentrated in deprived areas of the city (see *Table 4*), although this is not the case for the Black population of the city.

## Poverty and Deprivation

Leicester is not a wealthy city and, as indicated above, some areas of the city fall within the most deprived 5% of all areas in England. The Index of Multiple Deprivation 2004 (IMD2004), compiled by the ODPM, (Office of the Deputy Prime Minister) shows that the most deprived areas in Leicester are in the centre and the western outer estates of the city.

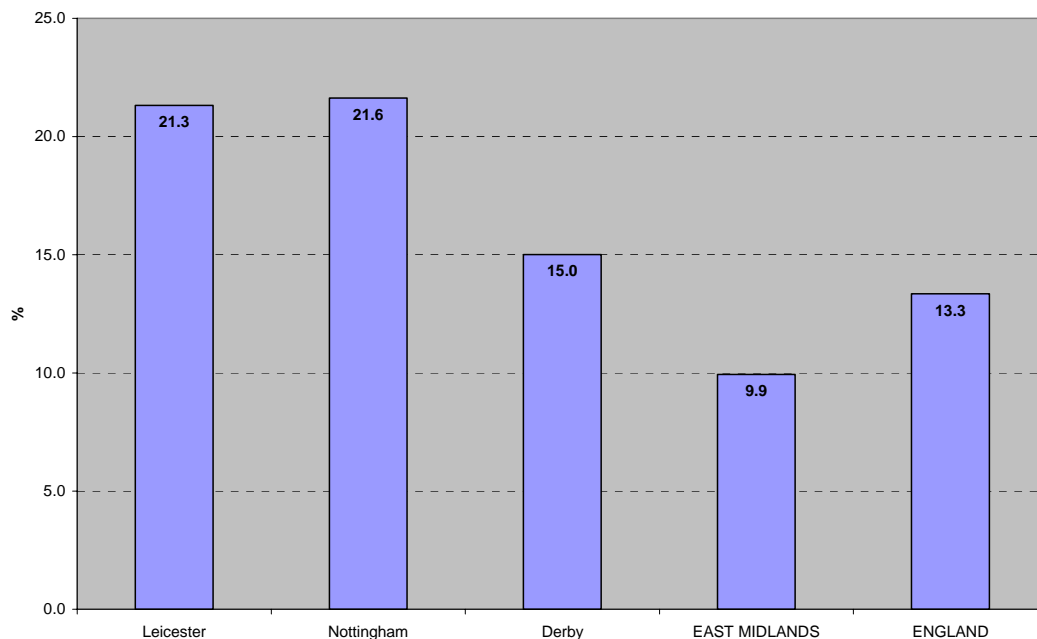
**Map 4: Top 5% Deprived Areas Nationally in Leicester**



Source: IMD2004, ODPM

Free school meal take-up is often used as a proxy measure for deprivation. The proportion of primary school pupils taking free school meals in Leicester is more than double the regional average, and significantly above the figure for England.

**Chart 4: Free School Meals, January 2005**



Source: Department for Education and Skills (DfES), 2005

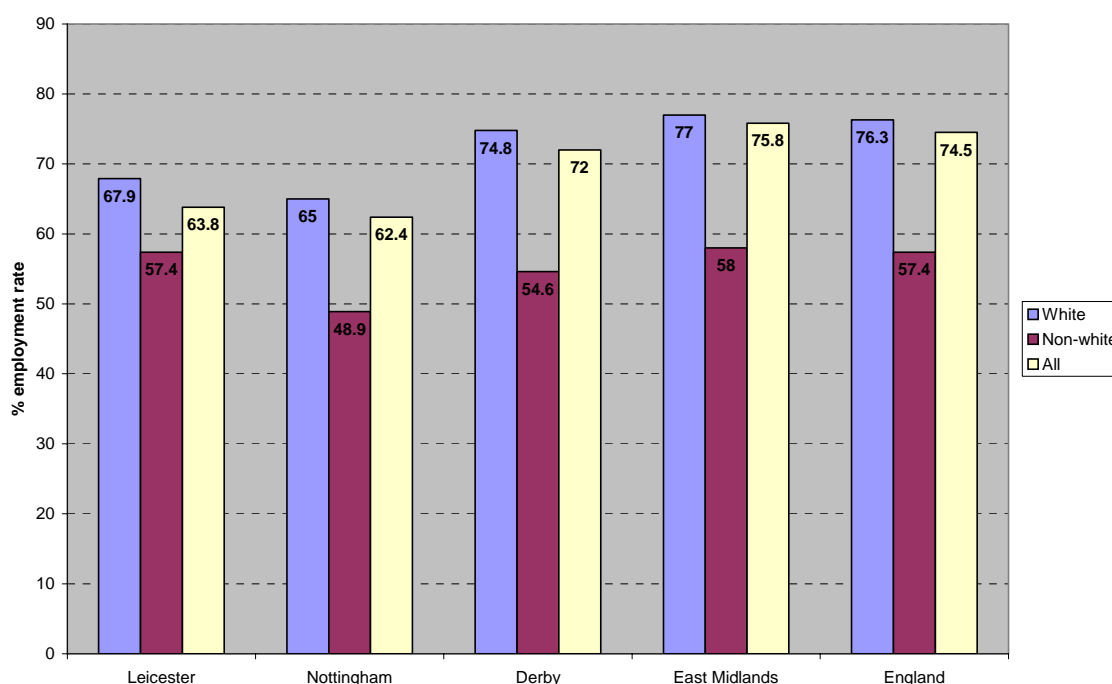
<http://www.dfes.gov.uk/rsgateway>

## Employment & Ethnicity

Overall employment rates in Leicester are lower than for the East Midlands region, and 8.4% lower than for England as a whole (*Source: Labour Force Survey 2002/03*).

Employment rates amongst ethnic minorities is 10.5% lower than for white ethnicities in Leicester. This gap is narrower than the comparable national figures where the employment rate is 18.9% lower amongst ethnic minorities.

**Chart 5: Employment rates by ethnic groups**



*Source: Annual Labour Force Survey, 2002/03*

Due to small sample sizes, specific ethnic groups cannot be analysed with statistical reliability for Leicester. However, figures for the whole of England show that there are noticeable differences in employment rates between ethnic groups. It is probable that a similar pattern is repeated at a local level.

**Table 5: Employment rates amongst ethnic groups, England 2002/03**

Ethnic Group	Employment Rate
White	76.3
Indian	68.5
Pakistani & Bangladeshi	42.4
Black	60.3
Other	55.1

*Source: Annual Labour Force Survey, 2002/03*

## Skills

Low employment rates in Leicester are also determined by low skill levels of the population. The residents of the city have comparatively high percentages of the population with no qualifications and comparatively low levels of both literacy and numeracy compared to other cities in the region and to England.

**Table 6: % of working age population in Leicester with no qualifications**

	Leicester	England
No qualifications	24.7%	14.8%

Source: Local Area Labour Force Survey, 2004

**Table 7: Literacy and Numeracy Levels in Leicester<sup>1</sup>**

	Leicester	England
Low literacy skills	18%	c16%
Level 1 literacy skills	50%	40%
Level 2 literacy skills	32%	44%
Low numeracy skills	64%	c46%
Level 1 numeracy skills	25%	28%
Level 2 numeracy skills	11%	25%

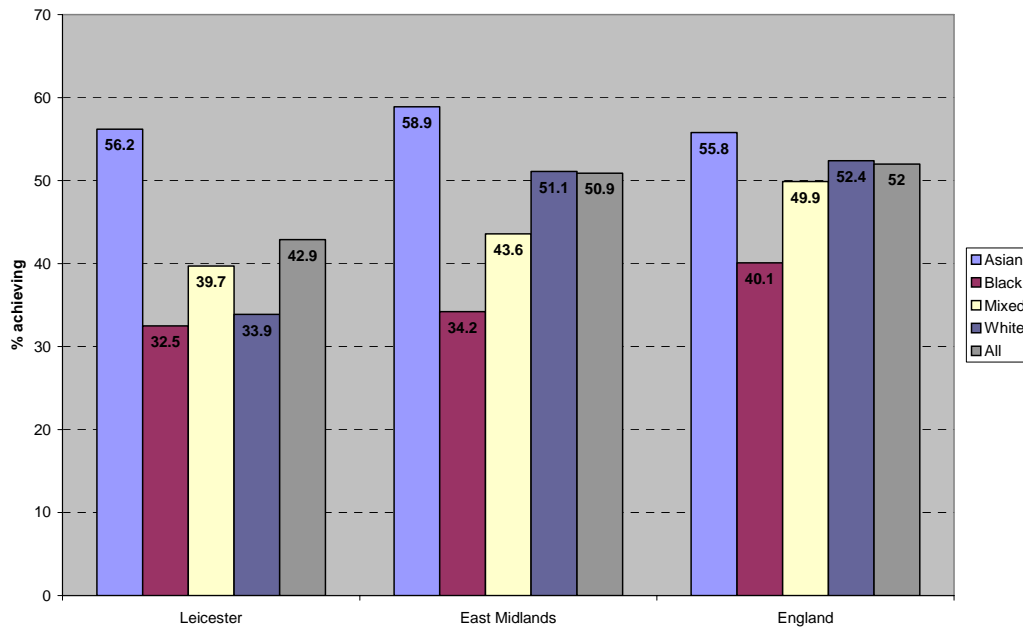
<sup>1</sup> Survey undertaken 2002/03. Low skills equates to below GCSE level, Level 1 comparable to grades D-G, Level 2 comparable to A\*-C.

Source: [http://www.dfes.gov.uk/readwriteplus\\_skillsforlifesurvey/](http://www.dfes.gov.uk/readwriteplus_skillsforlifesurvey/)

## Educational Attainment

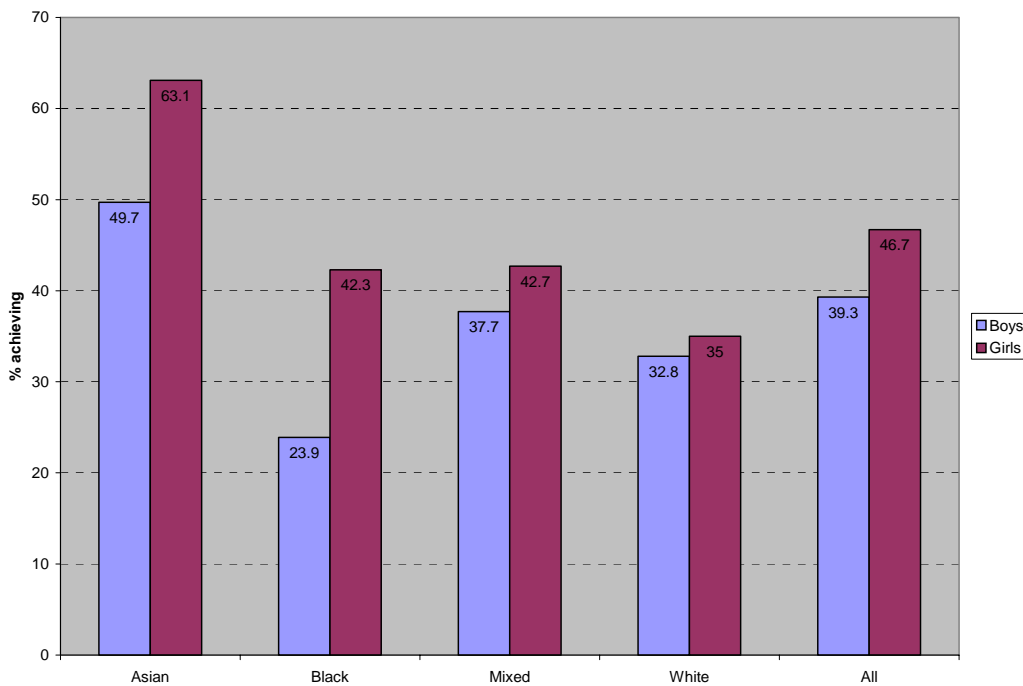
Educational attainment rates are amongst the lowest in the country, demonstrated at both Key Stage Two and for GCSE results. There is, however, an upward trend in educational attainment in the city. The patterns of attainment differ markedly for different ethnic groups and across the city and by gender.

**Chart 6: GCSE Results - 5 or more at A\*-C, Ethnic Groups, 2005**



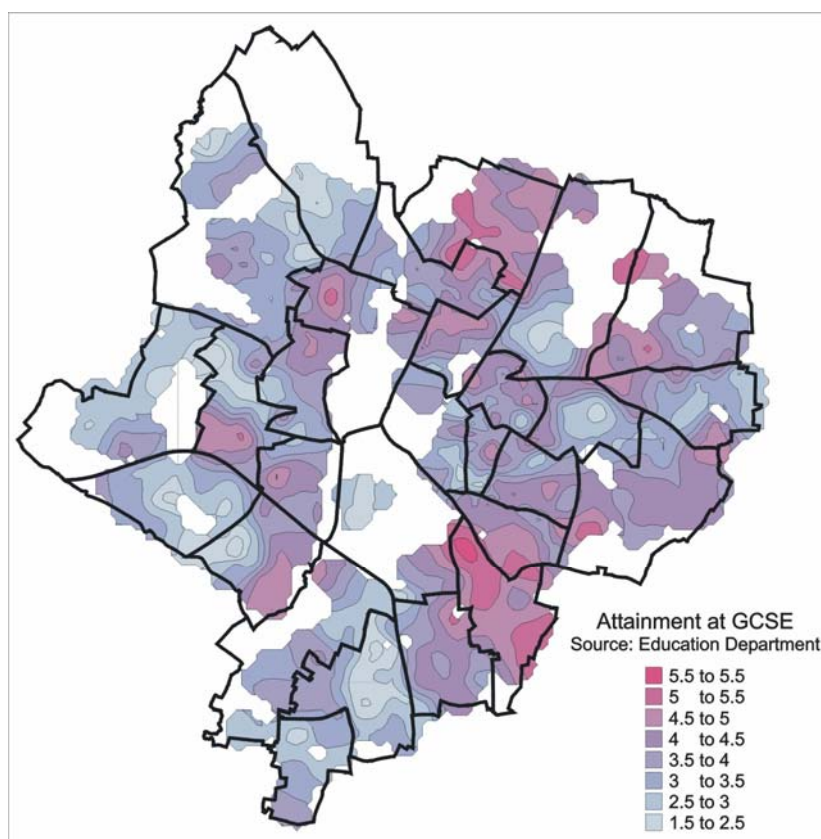
Source: Dept for Education & Skills, 2005  
<http://www.dfes.gov.uk/rsgateway>

**Chart 7: GCSE Results - 5 or more at A\*-C, Ethnicity & Gender, 2005**



Source: Dept for Education & Skills  
<http://www.dfes.gov.uk/rsgateway>

**Map 5: Distribution of GCSE scores in Leicester, 2001/02**



Source: Information Services, Leicester City Council

## Health

Patterns of good or poor health in Leicester are related to age and other socio-economic factors. Those reporting their health as 'poor' were more prevalent amongst Irish, Caribbean and white populations, but these are also the oldest communities in the city (*Census 2001, Standard Theme Table 13*).

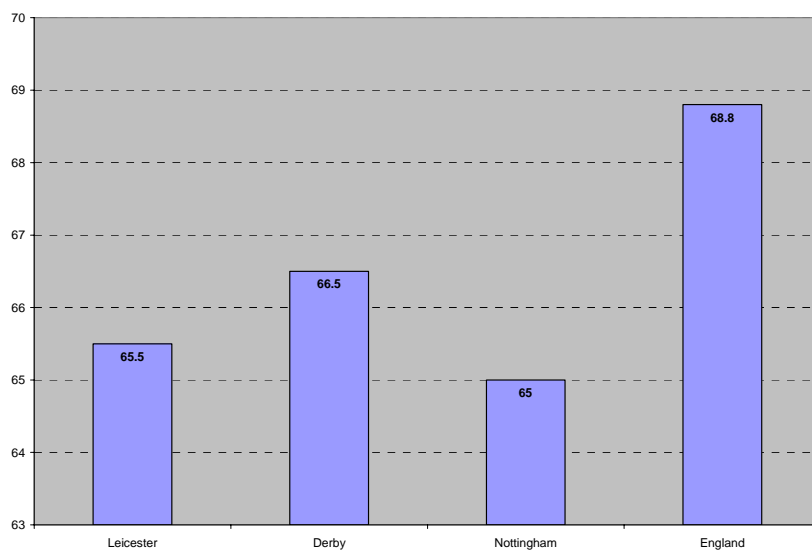
Those who are disadvantaged and less affluent have poorer health and lower life expectancy than those who are better off. Inequalities in health exist both within the city and between the city and other comparable cities and England.

The Director of Public Health has indicated that in Leicester there is a variation in and between ethnic communities both in terms of prevalence of different diseases, such as high rates of diabetes, coronary heart disease and low rates of cancer in South Asian communities, and an ease of access to some health services by some population groups. This is similar to patterns noticed in other cities with significant ethnic minority communities. (*Director of Public Health, Annual Report, 2005*).

## Community Safety

To be completed  
Fear of crime  
Hate crimes  
Violent crimes  
Youth offending

**Chart 8: Percent of People Describing their General Health as 'Good'**



Source: 2001 Census ([www.neighbourhood.statistics.gov.uk](http://www.neighbourhood.statistics.gov.uk))

## Housing

The diversity of Leicester's population is reflected in particular housing issues – namely to meet the pressures on the demand for public housing and to reduce overcrowding through increasing the supply of affordable 4-5 bedroom homes. Many ethnic minority families live in extended families and, whilst no figures are available for Leicester, nationally overcrowding (one or more people per room) is an issue in 34% of Bangladeshi, 19% of Pakistani and 17.6% of Black African households. (2001 Census: Theme Table CT004).

## Community Safety

To be completed

Fear of crime

Hate crimes

Violent crimes

Youth offending

Women and Crime

Household Survey 2001

- 60% of women concerned about being robbed or mugged
- more than 50% worried about being sexually assaulted and harassed
- just over 40% concerned about being pestered by anybody in the street or other public places.

## Domestic Violence

<b>Ethnicity</b>	<b>2002/03</b>	<b>2003/04</b>
White	259	557
Asian/Asian British	246	512
Black/Black British	21	39
Mixed	2	19
Other	16	18
Not asked	46	104
Not Known	69	13

Source: *Domestic Violence Data Collection in Leicester, 2003-2004, Safer Leicester Partnership, 2004*

## Community Cohesion

The residents of Leicester have a positive attitude towards the diversity and multi-culturalism of the city. In the 2005 Residents' Survey 77% of the residents said that they liked living in Leicester and 79% strongly identified with it. The same survey showed that Leicester also has a high proportion of people, 84%, who identified with both England and Britain. A breakdown of this figure indicates that the sense of belonging was highest amongst the ethnic minority population.

**Table 8: Satisfaction with Leicester as a place to live**

	% Satisfied
MORI 1998	81
MORI 2001	80
MORI 2005	77

Source: Leicester Residents' Survey 2005, Best Value General Survey 2003

## Sense of Belonging

**Table 9: Sense of Belonging in Leicester**

	% Your neighbourhood	% Leicester	% England	% Britain
BV General Survey 2003	61.2	71.4	76.3	73.2
Residents' Survey 2005	74.5	79	84	84

Source: Leicester Residents' Survey 2005, Best Value General Survey 2003

## Sites of Cross-Cultural Mixing

The places where people meet with others of different ethnicities in Leicester are principally at the local shops, on public transport and at public events such as entertainment and sports events. This is higher than comparable figures for other cities in the UK. **IS IT?**

**Table 10: Sites of Cross-Cultural Interaction**

	% Local shops	% Neighbourhood	% Work	% Restaurants, pubs, cinemas
BV General Survey 2003	75	57	54	51
MORI 2005	53	40	38	29

Source: Leicester Residents Survey, 2005, Best Value General Survey 2003

## Participation

Participation levels across the city vary significantly. In both national and local elections the greater the diversity the higher the levels of participation.

In the 2003 City Council elections, the four electoral districts with the highest turnout were Latimer 51%, Evington 48%, Spinney Hills 48% and Belgrave 44% and the four with the lowest turnout are Beaumont Leys 22%, Castle 24%, Westcotes 24% and New Parks 24% (*Electoral Services, Leicester City Council*).

The average electoral turnout in Leicester for the 2005 general election was 59%, and for the 2003 local elections 35%. Across England the comparative figures were 61% and 35%.

The composition of the 2003-2007 Leicester City Council has xxx members with an ethnic minority background, xxx % of the total members. The first member elected with a minority background was in 1974. Since then the number of members elected with an ethnic minority background has continued to rise until 2002 when there was a slight fall.

## Data Sources

The **Leicester Shire Online Research Atlas** is a project sponsored by the Leicester Partnership to bring together in one web-based site all the major statistical data on Leicester. The statistical data is accessible for very small areas in table and colour map formats. Access to **LSORA** can be found at [www.lsora.org](http://www.lsora.org)

Information Services, Department of Regeneration and Culture, Leicester City Council also has a wide range of statistical information on Leicester. Key websites include

<http://www.leicester.gov.uk/about-leicester/city-statistics> for general demographic information and <http://www.leicester.gov.uk/about-leicester/city-statistics/ward-profiles---2001-census> for ward profiles.

Other sources of statistical information include the 2001 Census data from the Office of National Statistics <http://www.statistics.gov.uk/census2001>, and the Neighbourhood Statistics site which provides a wider range of statistical data for local areas <http://www.neighbourhood.statistics.gov.uk>.

## Other Data Sources

The Home Office's Research Development and Statistics website, which includes statistics on crime, policing, justice, immigration and drugs <http://www.homeoffice.gov.uk/rds/>

ODPM website. Contains wide range of information on regeneration, sustainable communities, housing, social exclusion etc <http://www.odpm.gov.uk/index.asp?id=1141801>

Department for Education and Skills: <http://www.dfes.gov.uk/rsgateway/>

Department of Health statistics site:

<http://www.dh.gov.uk/PublicationsAndStatistics/Statistics/fs/en>

CityStreAtZ: <http://citystreatz.leicester.gov.uk>

Social Atlas: <http://www.leicester.gov.uk/about-leicester/social-atlas>

Public Health information: [www.phleicester.org.uk](http://www.phleicester.org.uk)

This document has been prepared by Trish Roberts-Thomson and Kurt Coulter, Chief Executive's Office, Leicester City Council. July 2006