

Leicestershire Output Area Classifications 2001

October 2007

Produced by the Research & Information Team, Chief Executive's Department, Leicestershire County Council.

For more information, please contact:

Alex Lea
Research Manager, Research & Information Team,
County Hall,
Glenfield,
Leicestershire,
LE3 8RA

Tel 0116 305 6803

Email alea@leics.gov.uk

ONS 2001 Census Output Area Classifications

The 2001 Area Classifications were created on behalf of the Office of National Statistics by the University of Leeds. The classification is used to group together geographic areas according to key characteristics common to the population in that grouping. These groupings are called clusters, and are derived using 2001 population census data. This is a new classification produced using the same principles but a different statistical methodology from that used to produce the other area classifications.

The basic level of geography, Output Areas, (OAs) are a new geographic hierarchy designed to improve the reporting of small area statistics in England and Wales. There are some 175,500 Output Areas in England and Wales and they were created around a target population of 125 resident households.

This classification groups output areas into clusters based on similar characteristics. The largest cluster is the supergroup, of which there are seven. Each supergroup is further split into groups (21 in total) and further into subgroups (52 in total). This classification groups output areas into clusters based on similar characteristics. The largest cluster is the supergroup, of which there are seven. Each supergroup is further split into groups (21 in total) and further into subgroups (52 in total).

Detailed characteristics for each level of classification (supergroup, group and sub-group) can be found on the ONS website at:

http://www.statistics.gov.uk/about/methodology_by_theme/area_classification/oa/cluster_summaries.asp

A supporting technical report explaining how the output area classification were created can be found on the University of Leeds website at:

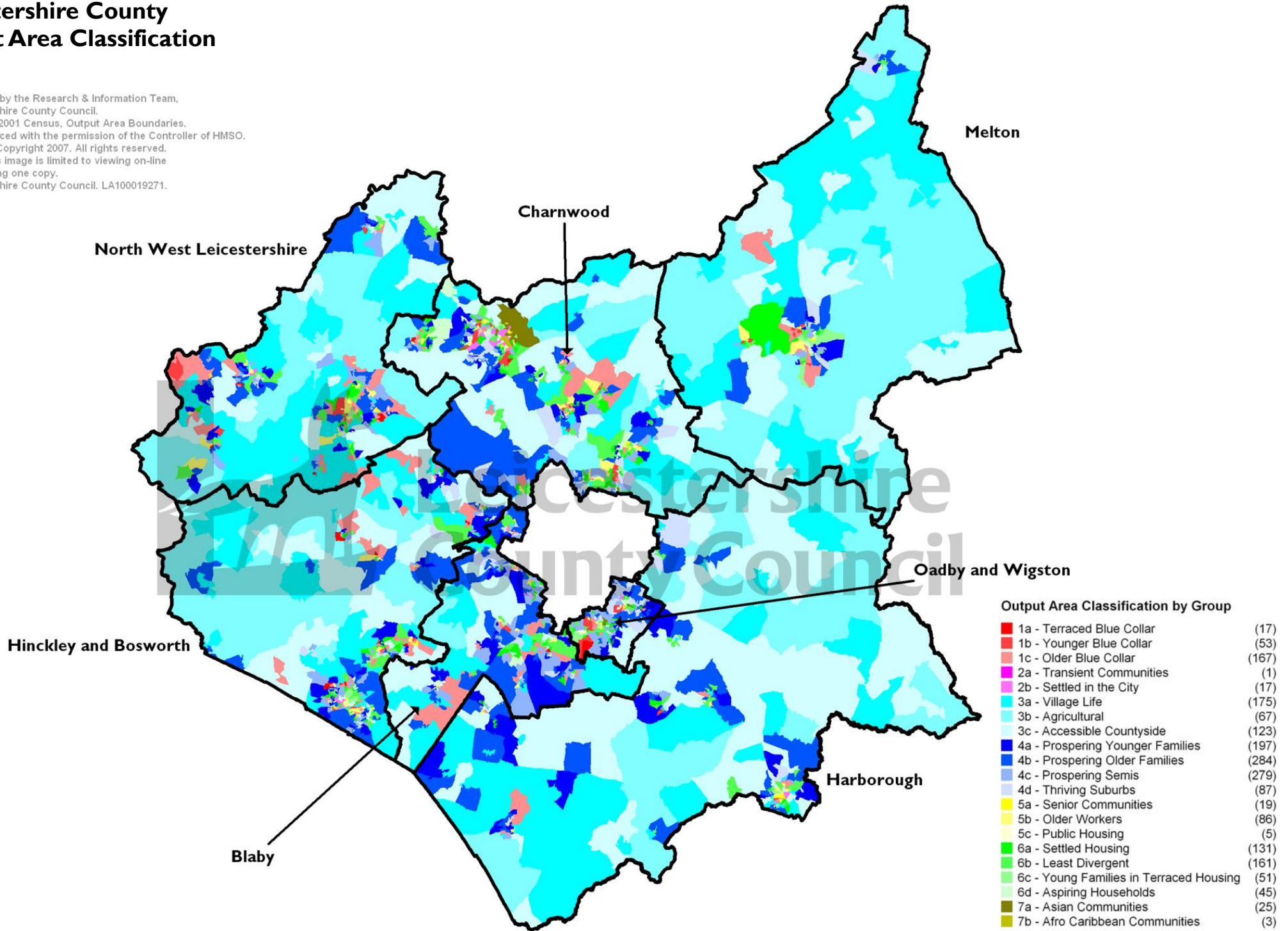
<http://www.geog.leeds.ac.uk/wpapers/05-2.pdf>

Source: Office of National Statistics

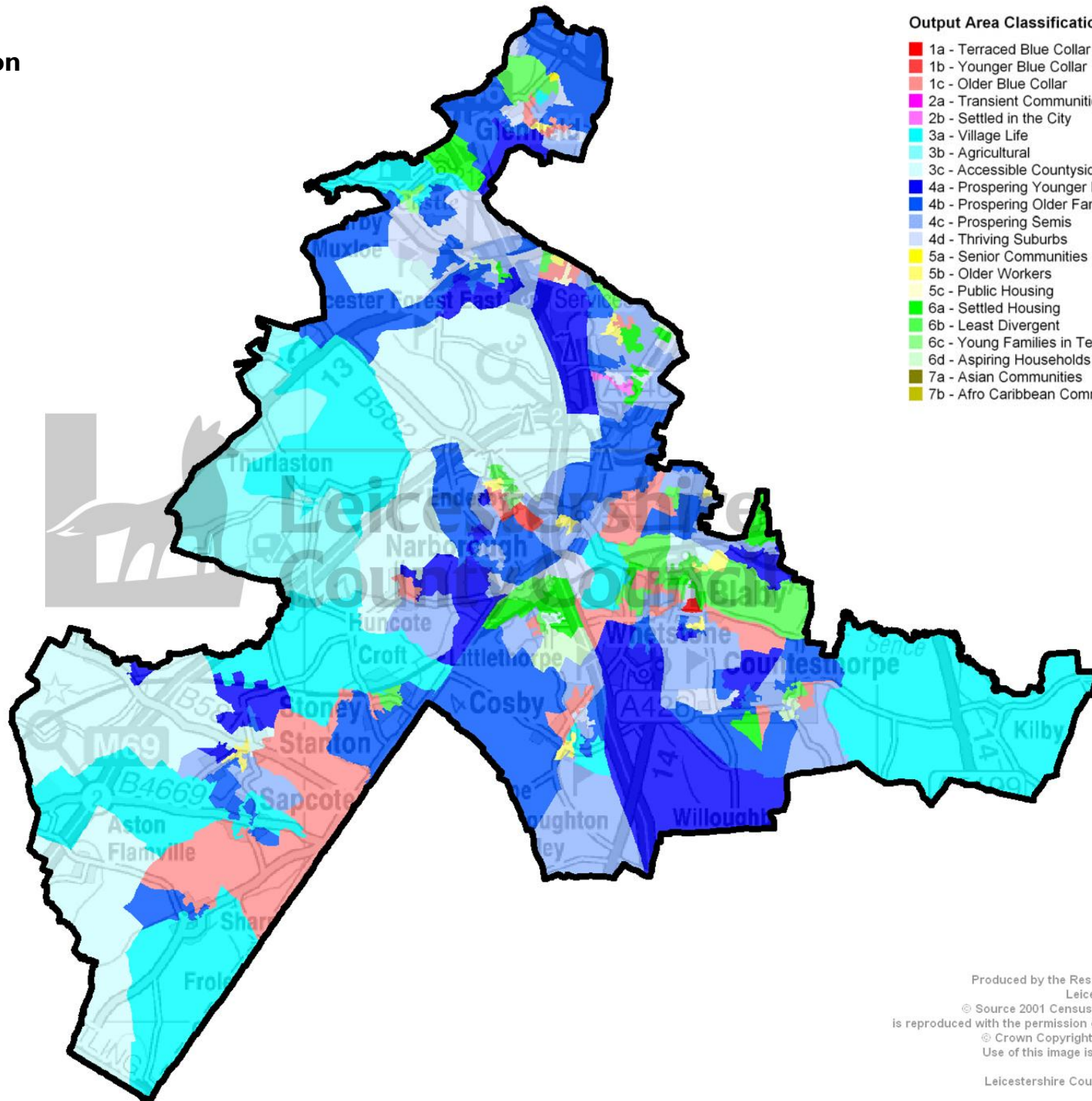


Leicestershire County Output Area Classification

Produced by the Research & Information Team,
Leicestershire County Council.
© Source 2001 Census, Output Area Boundaries.
is reproduced with the permission of the Controller of HMSO.
© Crown Copyright 2007. All rights reserved.
Use of this image is limited to viewing on-line
and printing one copy.
Leicestershire County Council. LA100019271.



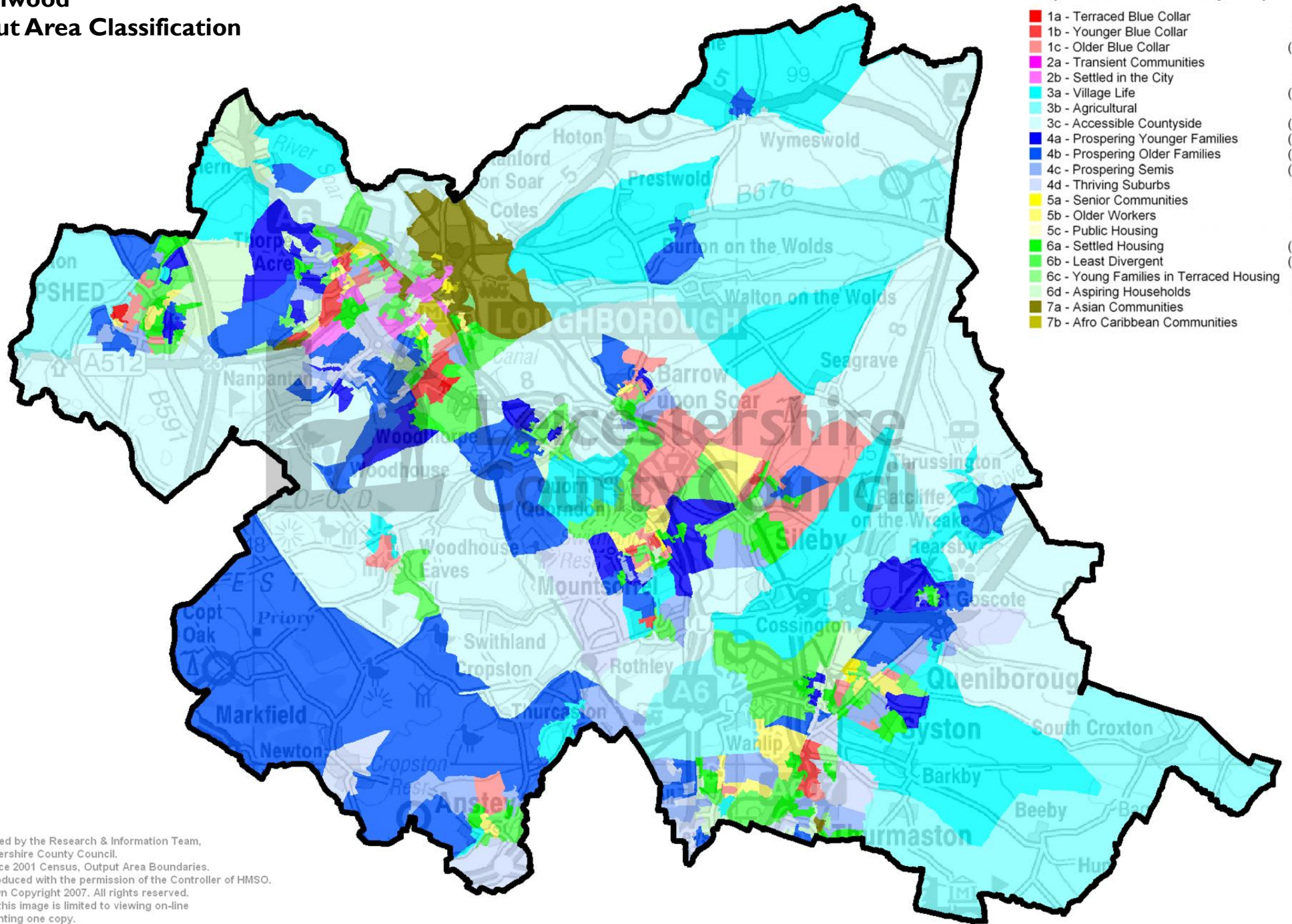
Blaby Output Area Classification



Output Area Classification by Group

1a - Terraced Blue Collar	(17)
1b - Younger Blue Collar	(53)
1c - Older Blue Collar	(167)
2a - Transient Communities	(1)
2b - Settled in the City	(17)
3a - Village Life	(175)
3b - Agricultural	(67)
3c - Accessible Countyside	(123)
4a - Prospering Younger Families	(197)
4b - Prospering Older Families	(284)
4c - Prospering Semis	(279)
4d - Thriving Suburbs	(87)
5a - Senior Communities	(19)
5b - Older Workers	(86)
5c - Public Housing	(5)
6a - Settled Housing	(131)
6b - Least Divergent	(161)
6c - Young Families in Terraced Housing	(51)
6d - Aspiring Households	(45)
7a - Asian Communities	(25)
7b - Afro Caribbean Communities	(3)

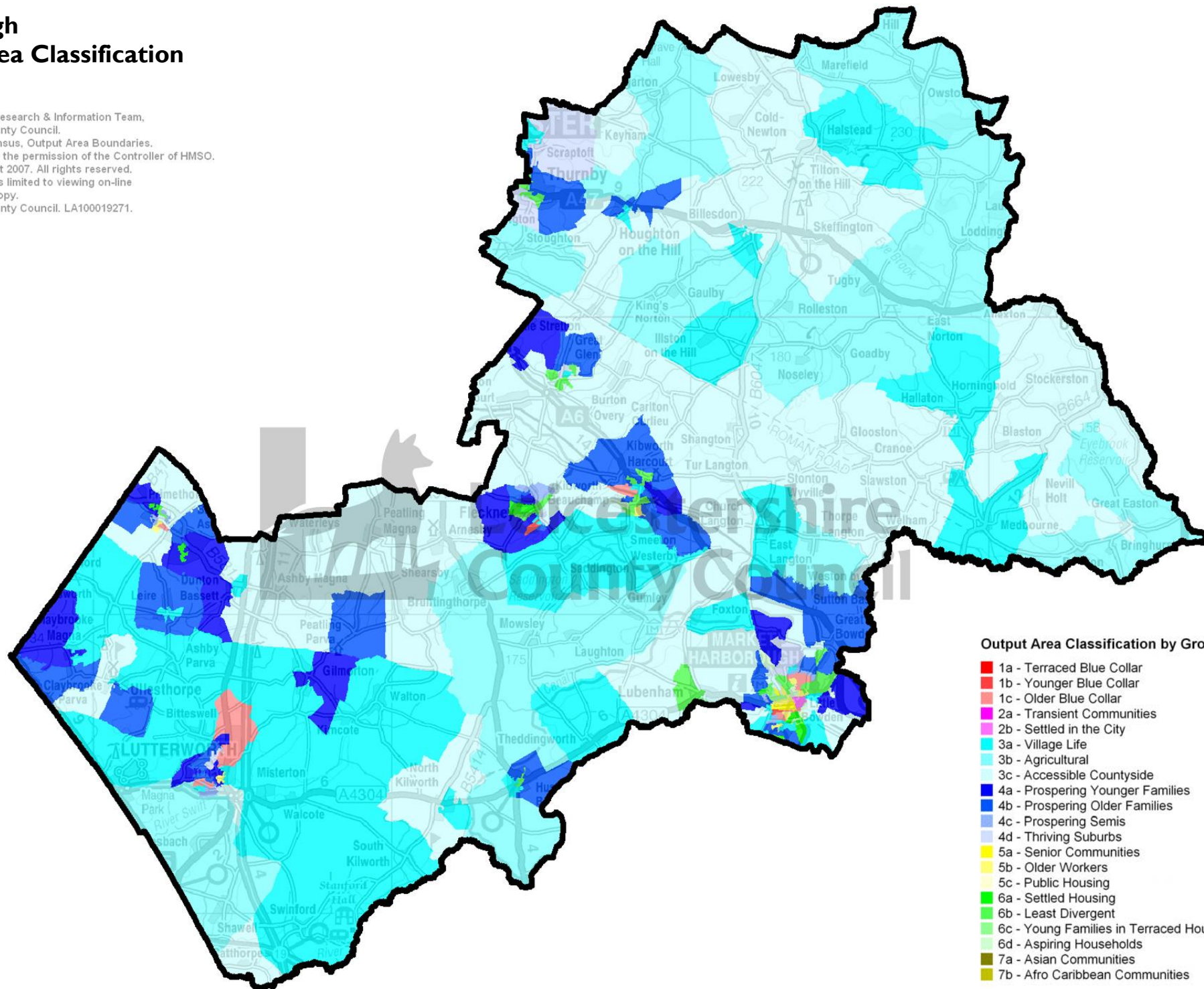
Charnwood Output Area Classification



Produced by the Research & Information Team,
Leicestershire County Council.
© Source 2001 Census, Output Area Boundaries.
is reproduced with the permission of the Controller of HMSO.
© Crown Copyright 2007. All rights reserved.
Use of this image is limited to viewing on-line
and printing one copy.
Leicestershire County Council. LA100019271.

Harborough Output Area Classification

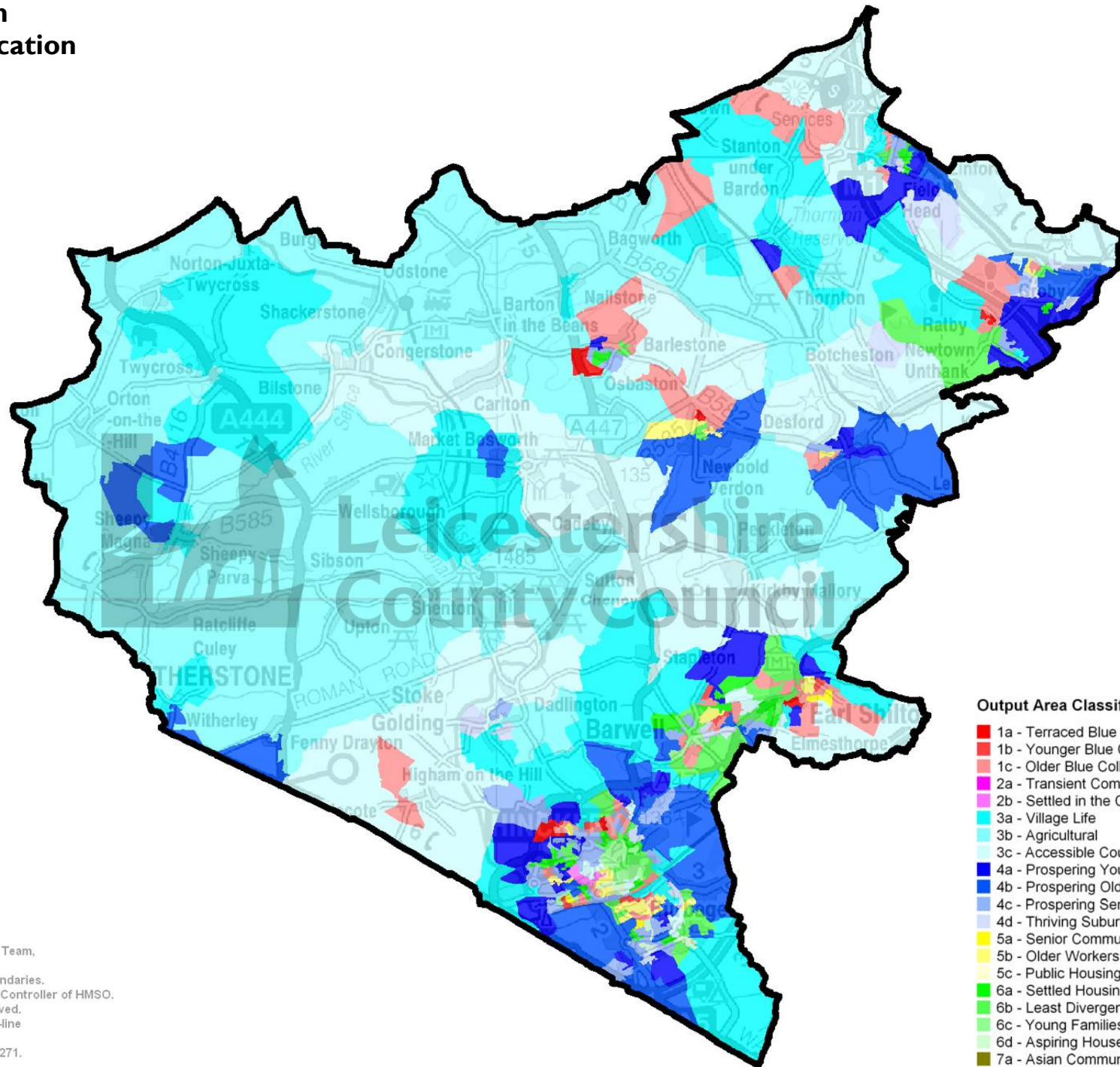
Produced by the Research & Information Team,
Leicestershire County Council.
© Source 2001 Census, Output Area Boundaries.
is reproduced with the permission of the Controller of HMSO.
© Crown Copyright 2007. All rights reserved.
Use of this image is limited to viewing on-line
and printing one copy.
Leicestershire County Council. LA100019271.



Output Area Classification by Group

1a - Terraced Blue Collar	(17)
1b - Younger Blue Collar	(53)
1c - Older Blue Collar	(167)
2a - Transient Communities	(1)
2b - Settled in the City	(17)
3a - Village Life	(175)
3b - Agricultural	(67)
3c - Accessible Countyside	(123)
4a - Prospering Younger Families	(197)
4b - Prospering Older Families	(284)
4c - Prospering Semis	(279)
4d - Thriving Suburbs	(87)
5a - Senior Communities	(19)
5b - Older Workers	(86)
5c - Public Housing	(5)
6a - Settled Housing	(131)
6b - Least Divergent	(161)
6c - Young Families in Terraced Housing	(51)
6d - Aspiring Households	(45)
7a - Asian Communities	(25)
7b - Afro Caribbean Communities	(3)

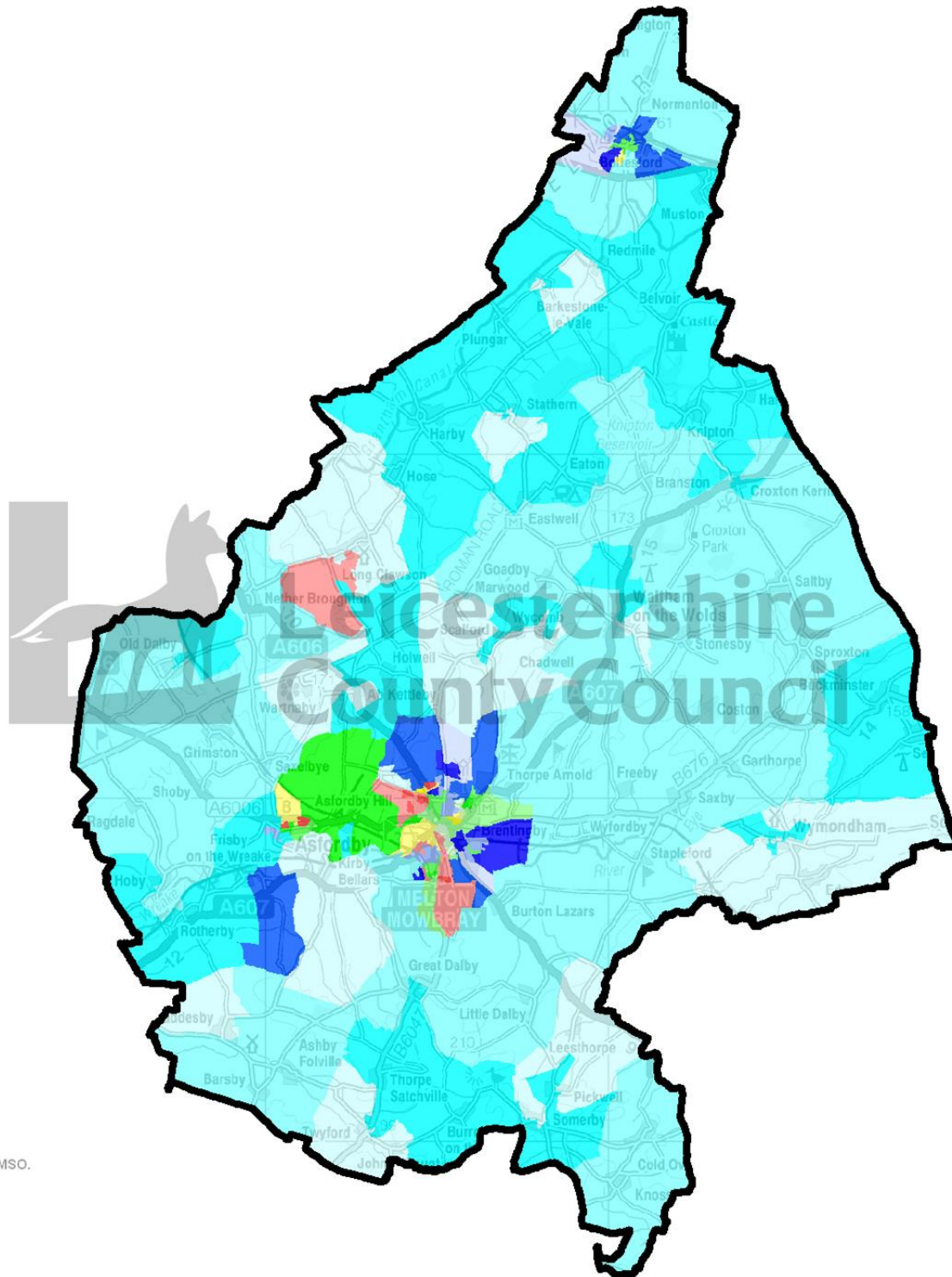
Hinckley & Bosworth Output Area Classification



Output Area Classification by Group

1a - Terraced Blue Collar	(17)
1b - Younger Blue Collar	(53)
1c - Older Blue Collar	(167)
2a - Transient Communities	(1)
2b - Settled in the City	(17)
3a - Village Life	(175)
3b - Agricultural	(67)
3c - Accessible Countyside	(123)
4a - Prospering Younger Families	(197)
4b - Prospering Older Families	(284)
4c - Prospering Semis	(279)
4d - Thriving Suburbs	(87)
5a - Senior Communities	(19)
5b - Older Workers	(86)
5c - Public Housing	(5)
6a - Settled Housing	(131)
6b - Least Divergent	(161)
6c - Young Families in Terraced Housing	(51)
6d - Aspiring Households	(45)
7a - Asian Communities	(25)
7b - Afro Caribbean Communities	(3)

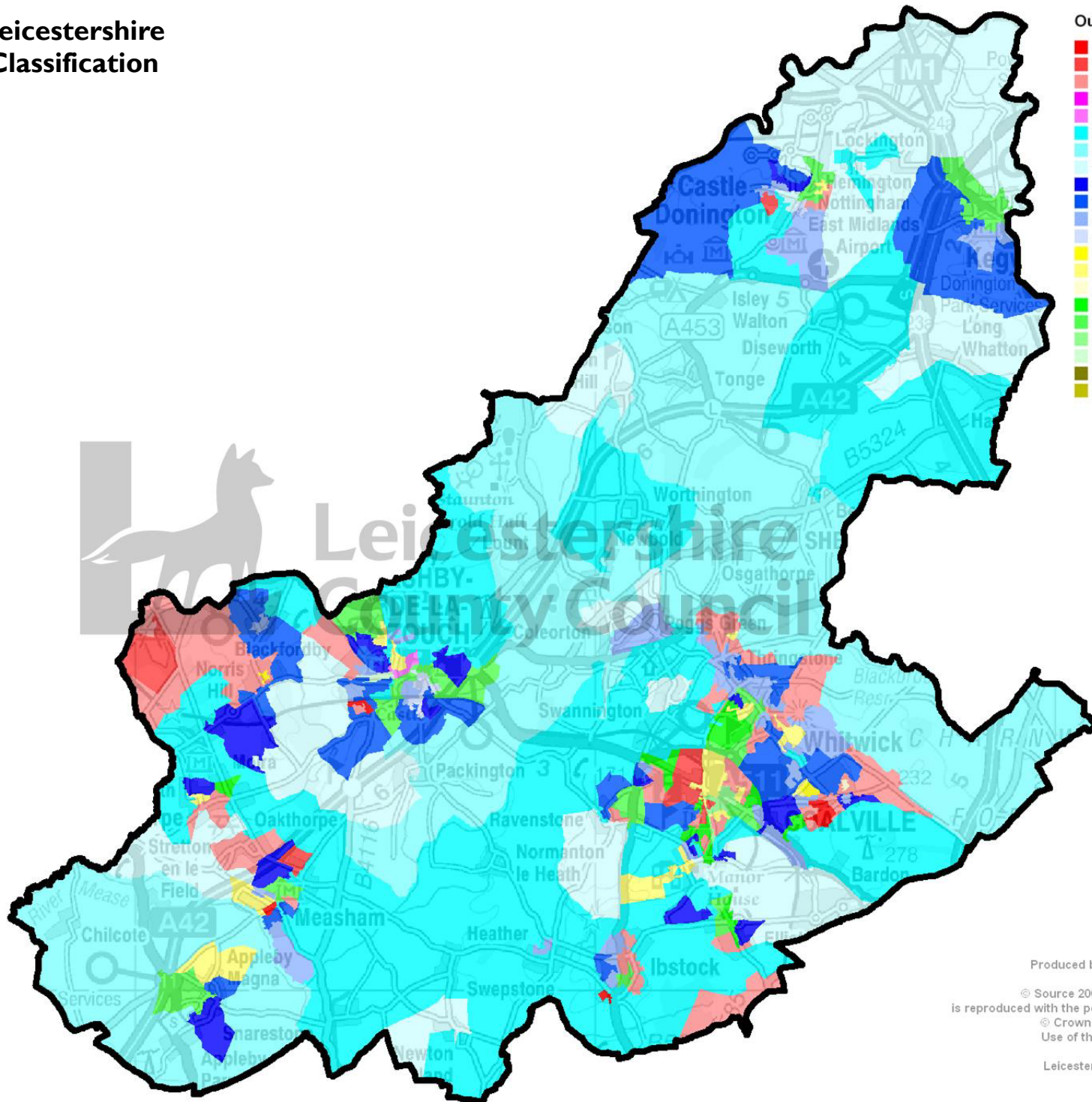
Melton Output Area Classification



Output Area Classification by Group

1a - Terraced Blue Collar	(17)
1b - Younger Blue Collar	(53)
1c - Older Blue Collar	(167)
2a - Transient Communities	(1)
2b - Settled in the City	(17)
3a - Village Life	(175)
3b - Agricultural	(67)
3c - Accessible Countyside	(123)
4a - Prospering Younger Families	(197)
4b - Prospering Older Families	(284)
4c - Prospering Semis	(279)
4d - Thriving Suburbs	(87)
5a - Senior Communities	(19)
5b - Older Workers	(86)
5c - Public Housing	(5)
6a - Settled Housing	(131)
6b - Least Divergent	(161)
6c - Young Families in Terraced Housing	(51)
6d - Aspiring Households	(45)
7a - Asian Communities	(25)
7b - Afro Caribbean Communities	(3)

North-West Leicestershire Output Area Classification



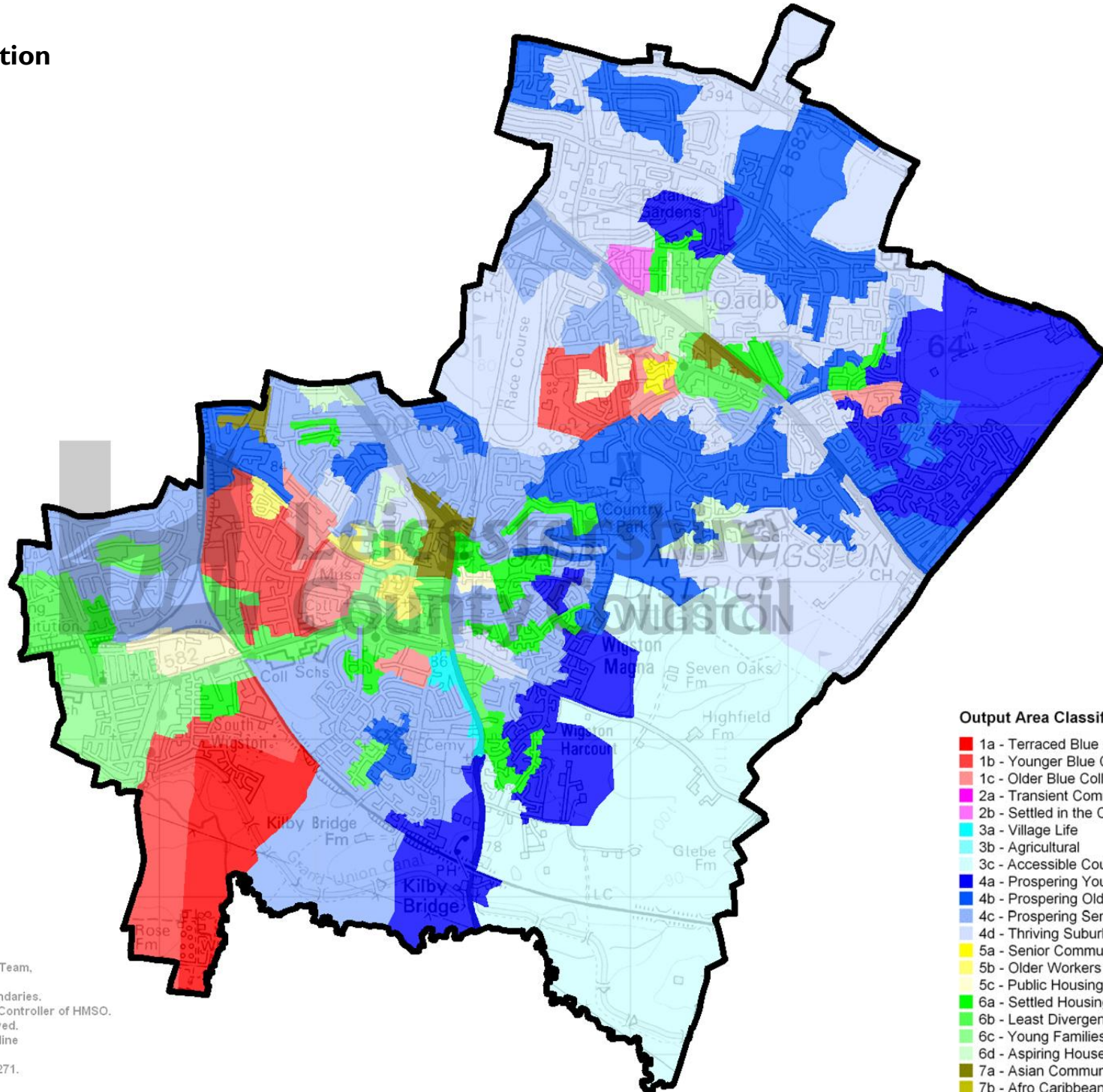
Output Area Classification by Group

1a - Terraced Blue Collar	(17)
1b - Younger Blue Collar	(53)
1c - Older Blue Collar	(167)
2a - Transient Communities	(1)
2b - Settled in the City	(17)
3a - Village Life	(175)
3b - Agricultural	(67)
3c - Accessible Countryside	(123)
4a - Prospering Younger Families	(197)
4b - Prospering Older Families	(284)
4c - Prospering Semis	(279)
4d - Thriving Suburbs	(87)
5a - Senior Communities	(19)
5b - Older Workers	(86)
5c - Public Housing	(5)
6a - Settled Housing	(131)
6b - Least Divergent	(161)
6c - Young Families in Terraced Housing	(51)
6d - Aspiring Households	(45)
7a - Asian Communities	(25)
7b - Afro Caribbean Communities	(3)



Produced by the Research & Information Team,
Leicestershire County Council.
© Source 2001 Census, Output Area Boundaries.
is reproduced with the permission of the Controller of HMSO.
© Crown Copyright 2007. All rights reserved.
Use of this image is limited to viewing on-line
and printing one copy.
Leicestershire County Council. LA100019271.

Oadby & Wigston Output Area Classification



Produced by the Research & Information Team,
Leicestershire County Council.
© Source 2001 Census, Output Area Boundaries.
is reproduced with the permission of the Controller of HMSO.
© Crown Copyright 2007. All rights reserved.
Use of this image is limited to viewing on-line
and printing one copy.
Leicestershire County Council. LA100019271.

If the information contained in this report is required in another version, e.g. Braille, large type, tape or an alternative language, please call 0116 305 6803 or email alea@leics.gov.uk



Research & Information Team
Community Planning Branch
Chief Executives Department
Leicestershire County Council
County Hall, Glenfield, Leicestershire
LE3 8RA

જો આપ આ માહિતી આપની ભાષામાં સમજવામાં થોડી મદદ ઇચ્છતાં હો તો **0116 305 6803** નંબર પર ફોન કરશો અને અમે આપને મદદ કરવા વ્યવસ્થા કરીશું.

જેવર તુઘાનું ઈસ જાણકારી નું સમજૂતિ વિષે વ્રુષ મદદ ચાહીલી તૈ ત્રાં વિરપા વરવે **0116 305 6803** નંબર ડે ફોન કરે અડે અસીં તુઘાડી મદદ ળઈ વિસે ડા પૂર્ષય વર ડલાંગો।

এই তথ্য নিজের ভাষায় বুঝার জন্য আপনার যদি কোন সাহায্যের প্রয়োজন হয়, তবে **0116 305 6803** এই নম্বরে ফোন করলে আমরা উপযুক্ত ব্যক্তির ব্যবস্থা করবো।

假如閣下需要幫助，用你的語言去明白這些資訊，請致電 **0116 305 6803**，我們會安排有關人員為你提供幫助。

Jeżeli potrzebujesz pomocy w zrozumieniu tej informacji w Twoim języku, zadzwoń pod numer **0116 305 6803**, a my Ci pomożemy.