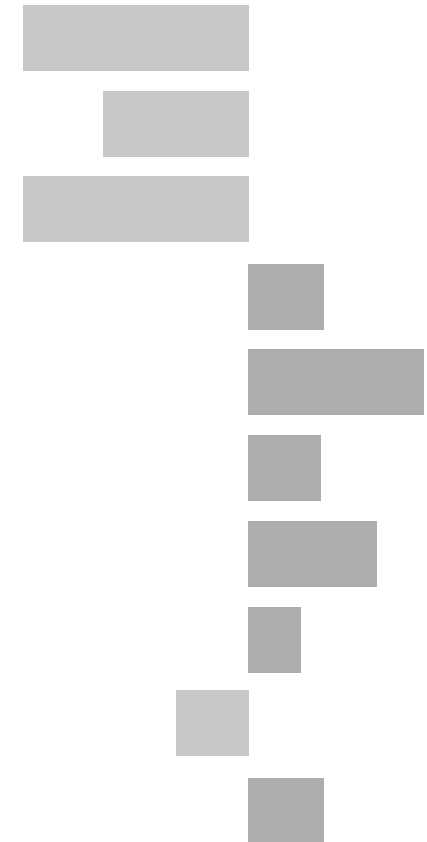


Blaby and Glen Parva Electoral Division

2011 Census Key Statistics

Alex Lea
May 2013

Research and Insight Team
Leicestershire County Council



Alex Lea

Research & Insight Manager

Research & Insight Team
Strategy, Partnerships & Communities
Leicestershire County Council
County Hall
Glenfield
Leicester LE3 8RB

Tel 0116 305 6803

Email alex.lea@leics.gov.uk

Produced by the Research and Insight Team at Leicestershire County Council.

Whilst every effort has been made to ensure the accuracy of the information contained within this report, Leicestershire County Council cannot be held responsible for any errors or omission relating to the data contained within the report.

CONTENTS

Introduction

About this Report	4
2011 Census	4
Data	5
Census Geography	5
Indicator Changes 2001-11	6

Population

KS101EW - Usual Resident Population	7
KS102EW - Age Structure	7

Households

KS105EW - Household Composition	8
KS402EW - Tenure	9

Health and Caring

KS301EW - Health and Provision of Unpaid Care	9
---	---

Ethnicity

KS201EW - Ethnic Group	10
------------------------	----

Economy

KS601EW - Economic Activity	11
KS605EW - Industry	12

Transport

KS404EW - Car and Van Availability	13
QS701EW - Method of Travel to Work	13

INTRODUCTION

ABOUT THIS REPORT

This report provides a broad overview of the 2011 Census Key Statistics data, released by the Office for National Statistics on 30th January 2013, as part of the Second Release. This report summarises a selection of key headline datasets of this release for Leicestershire Electoral Divisions (EDs).

The Research and Insight Team at Leicestershire County Council has used data from the Second release to create an interactive Tableau dashboard containing 32 datasets covering the following geographies:

- England
- East Midlands
- East Midlands counties . Including Leicestershire
- Leicester City and Rutland Unitary Authorities
- Leicestershire districts

In addition, a headline report covers the results for Leicestershire and the seven districts that make up the county. The dashboard and report are available at the following links:

Census 2011 Key Statistics Dashboard

<http://public.tableausoftware.com/views/LAKeyStatsDashboard/Dashboard>

May 2013

Census 2011 Key Statistics Headline Report

http://www.lsr-online.org/reports/census_2011_key_statistics_headline_report/download/1/Census%202011%20Second%20Release%20FINAL.pdf

2011 CENSUS

Census statistics help paint a picture of the nation and how we live. They provide a detailed snapshot of the population and its characteristics, and underpin funding allocation to provide public services.¹ Data from the 2011 Census is made available at a variety of different levels of geography and in various releases.

The Key Statistics data covers a broad range of socio-economic topics, including data on ethnicity, health and employment. Each Key Statistic dataset is referred to by its unique three-digit code with the 'KS' prefix to denote a Key statistic (e.g. KS101). These are used throughout the report.

A full list of the 35 Key Statistics data tables are available here:

<http://www.ons.gov.uk/ons/publications/re-reference-tables.html?edition=tcm%3A77-286262>

¹ Office for National Statistics (ONS), 2013.

Further results from the census will be released throughout 2013, for more information, please visit:

<http://www.lsr-online.org/census-2011.html>

More information on the 2011 Census can be found here:

<http://www.ons.gov.uk/ons/guide-method/census/2011/index.html>

DATA

Data has been compiled for Leicestershire Electoral Divisions, covering the key datasets from the 2011 Census Key statistics.

Figures for 2011 and 2001 are included, along with the overall and percentage change between the two censuses. Data for each indicator is presented in a table and chart.

Population data is displayed in a table, a population pyramid and a chart showing percentage change between 2001 and 2011. All other data is displayed in tables, and charts. Charts for change between 2001 and 2011 are coloured according to the degree of change between the two censuses; grey corresponds to smallest change and green the largest change. A marker indicates the average figure for all Leicestershire Electoral Divisions.

GEOGRAPHY

Maps for all County Council Electoral Divisions can be found here:

http://www.leics.gov.uk/index/your_council/local_democracy/conductofcouncillorsandemployees/electoraldivisionmapsindex/electoraldivisionmaps.htm

As Census data is not made available for Electoral Divisions, smaller areas, called Lower Super Output Areas (LSOAs) have been used as building blocks for the figures included in this report. LSOAs are small parcels of geography, containing a minimum of 1,000 people, a maximum of 3,000 and an average of 1,500. LSOAs were initially developed for the 2001 Census and are used to release a range of neighbourhood-level datasets from various sources. There are 396 LSOAs in Leicestershire.

In some instances, LSOAs do not fit neatly within Electoral Divisions and in these cases, population weighted centroids - representing the 'centre of gravity' for population within an area - have been used in order to assign each LSOA to an Electoral Division. Electoral Divisions that fall within this category are indicated with a (*).

More information on Lower Super Output Areas can be found here:

<http://www.ons.gov.uk/ons/guide-method/geography/beginner-s-guide/census/super-output-areas--soas-/index.html>

INDICATOR CHANGES 2001-11

The following questions were asked in slightly different ways in 2011 compared to 2001. As such, care should be taken when making comparison between years.

KS201EW : Ethnic Group

Asian/Asian British: Chinese
Mixed/multiple ethnic group: Other Mixed
Mixed/multiple ethnic group: White and Asian
Mixed/multiple ethnic group: White and Black African
Mixed/multiple ethnic group: White and Black Caribbean
Other ethnic group: Any other ethnic group
White: English/Welsh/Scottish/Northern Irish/British
White: Other White

KS301EW : Health and Provision of Unpaid Care

Day-to-day activities limited
Day-to-day activities limited: Age 16 to 64
Day-to-day activities not limited
Fair health
Very/ bad Health
Very/ good Health

KS601EW : Economic Activity

All usual residents aged 16 and over
Economically active: Employee: Full-time
Economically active: Employee: Part-time
Economically active: Full-time student

Economically active: Self-employed
Economically active: Unemployed
Economically inactive: Long-term sick or disabled
Economically inactive: Looking after home or family
Economically inactive: Other
Economically inactive: Retired
Economically inactive: Student (including full-time)
Long-term unemployed
Unemployed: Age 50 and over
Unemployed: Never worked

KS605EW : Industry

All usual residents aged 16 and over in employment
A Agriculture, forestry and fishing
B Mining and quarrying
C Manufacturing
D, F Electricity, gas, steam, air conditioning supply etc
F Construction
G Wholesale and retail trade; repair of motor vehicles etc
H, J Transport, storage, information and communication
I Accommodation and food service activities
K Financial and insurance activities
L,M,N Real estate activities Professional, scientific etc
O Public administration and defence etc
P Education
Q Human health and social work activities
R, S, T, U Other

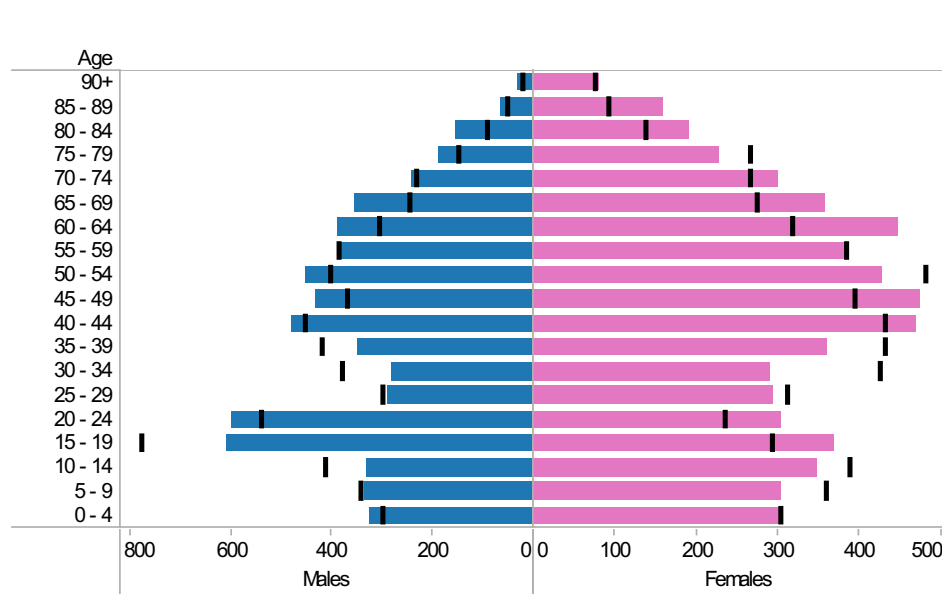
Blaby and Glen Parva ED: KS101EW : Usual Resident Population, KS102EW : Age Structure

■ Males
 ■ Females
 ■ Persons

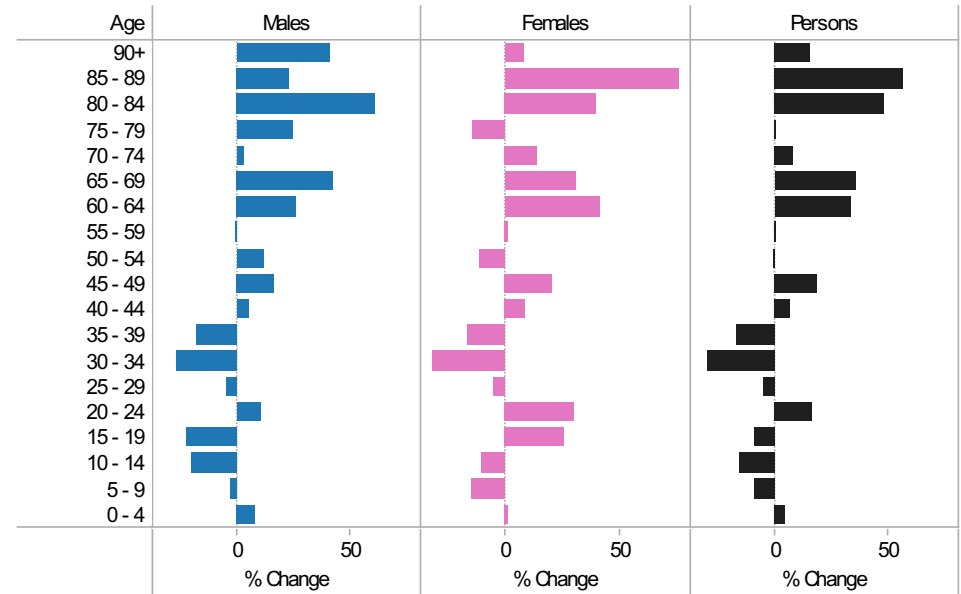
2001-11 Population by sex and quinary age band

Age	Males			Females			Persons		
	2001	2011	Change 2001-11	2001	2011	Change 2001-11	2001	2011	Change 2001-11
90+	22	31	9	74	80	6	96	111	15
85 - 89	52	64	12	91	160	69	143	224	81
80 - 84	95	153	58	136	190	54	231	343	112
75 - 79	150	187	37	265	228	-37	415	415	0
70 - 74	235	242	7	264	300	36	499	542	43
65 - 69	249	354	105	274	358	84	523	712	189
60 - 64	308	388	80	316	447	131	624	835	211
55 - 59	388	386	-2	382	388	6	770	774	4
50 - 54	404	452	48	481	428	-53	885	880	-5
45 - 49	371	433	62	394	474	80	765	907	142
40 - 44	456	479	23	430	469	39	886	948	62
35 - 39	423	349	-74	430	360	-70	853	709	-144
30 - 34	382	280	-102	425	290	-135	807	570	-237
25 - 29	302	289	-13	310	293	-17	612	582	-30
20 - 24	542	598	56	234	305	71	776	903	127
15 - 19	781	610	-171	292	368	76	1,073	978	-95
10 - 14	416	332	-84	388	347	-41	804	679	-125
5 - 9	346	335	-11	359	305	-54	705	640	-65
0 - 4	300	325	25	303	306	3	603	631	28
All Ages	6,222	6,287	65	5,848	6,096	248	12,070	12,383	313

2011 (coloured bars) and 2001 (black marks) population by sex and quinary age age

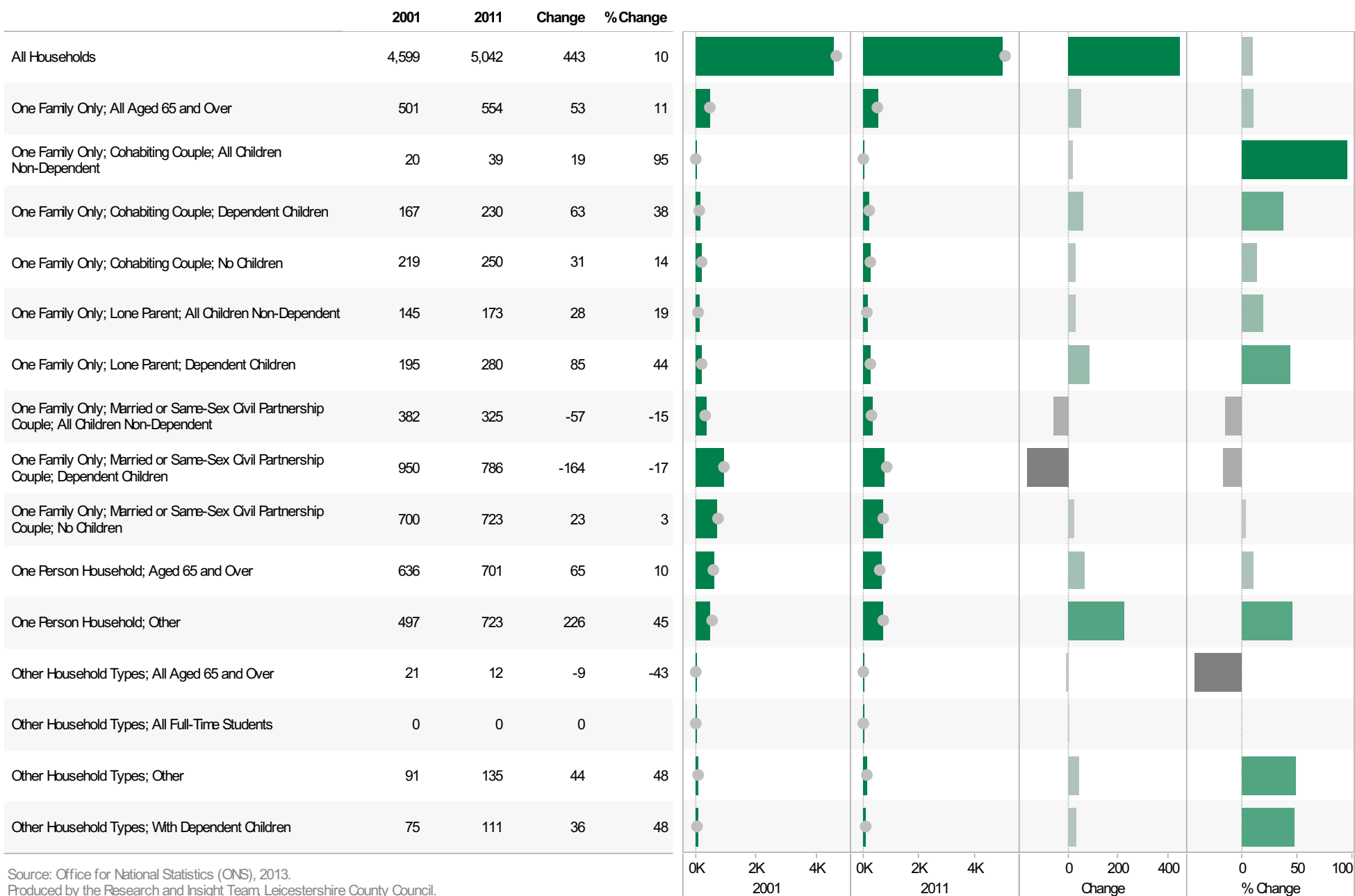


2001-11 Percentage change by sex and quinary age band



Blaby and Glen Parva ED KS105EW : Household Composition, 2001-11

Coloured bar - data for Electoral Division
Grey circle - average for all Leicestershire Electoral Divisions



Source: Office for National Statistics (ONS), 2013.
Produced by the Research and Insight Team, Leicestershire County Council.

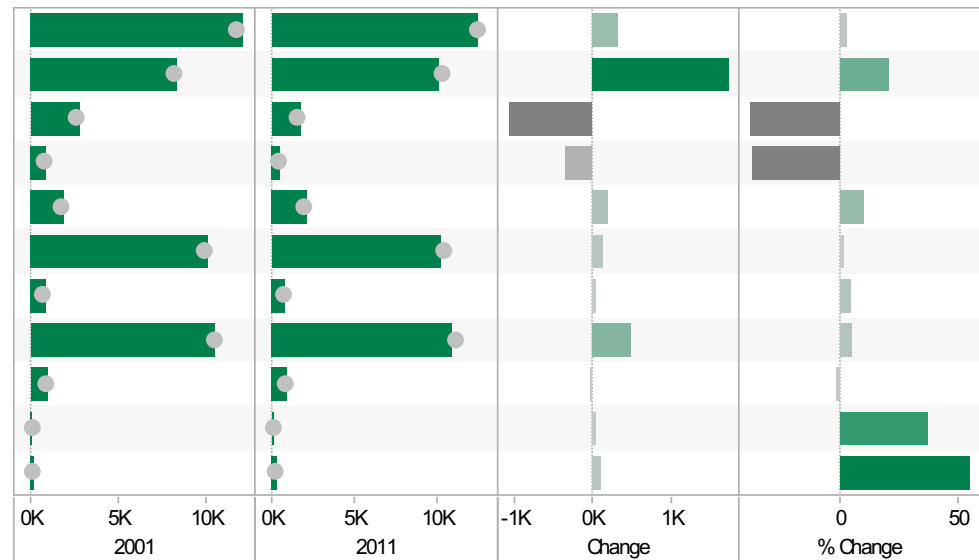
**Blaby and Glen Parva ED
KS402EW : Tenure, 2001-11**

	2001	2011	Change	% Change
All Households	4,597	5,042	445	10
Owned; Owned Outright	1,618	1,935	317	20
Owned; Owned with a Mortgage or Loan	2,257	2,061	-196	-9
Private Rented; Private Landlord or Letting Agency	147	403	256	174
Private Rented; Other	50	63	13	26
Social Rented; Rented from Council (Local Authority)	353	122	-231	-65
Social Rented; Other	130	370	240	185
Shared Ownership (Part Owned and Part Rented)	42	45	3	7
Living Rent Free		43		



**Blaby and Glen Parva ED
KS301EW: Health and Provision of Unpaid Care, 2001-11**

	2001	2011	Change	% Change
All usual residents	12,065	12,383	318	3
Very/ good Health	8,344	10,075	1,731	21
Fair health	2,801	1,731	-1,070	-38
Very/ bad Health	920	577	-343	-37
Day-to-day activities limited	1,961	2,162	201	10
Day-to-day activities not limited	10,104	10,221	117	1
Day-to-day activities limited a lot: Age 16 to 64	856	895	39	5
Provides no unpaid care	10,424	10,912	488	5
Provides 1 to 19 hours unpaid care a week	1,010	995	-15	-1
Provides 20 to 49 hours unpaid care a week	120	164	44	37
Provides 50 or more hours unpaid care a week	202	312	110	54



Source: Office for National Statistics (ONS), 2013.
Produced by the Research and Insight Team, Leicestershire County Council.

Blaby and Glen Parva ED KS201EW : Ethnic Group, 2001-11

Coloured bar - data for Electoral Division
Grey circle - average for all Leicestershire Electoral Divisions

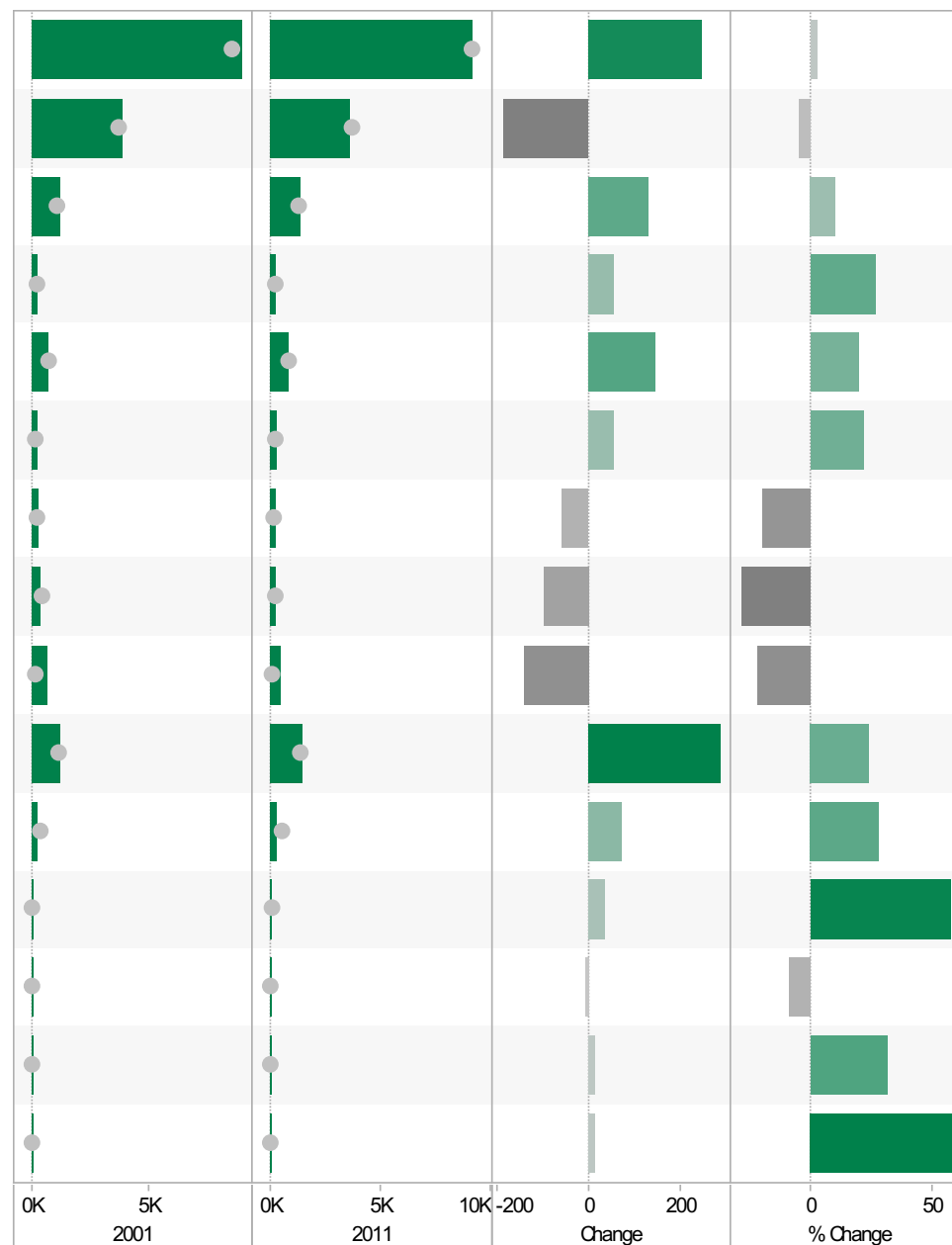
	2001	2011	Change	% Change
All usual residents	12,080	12,383	303	3
White: English/Welsh/Scottish/Northern Irish/British	11,382	11,383	1	0
White: Irish	95	73	-22	-23
White: Other White	145	194	49	34
Asian/Asian British: Bangladeshi	8	7	-1	-13
Asian/Asian British: Chinese	28	40	12	43
Asian/Asian British: Indian	140	234	94	67
Asian/Asian British: Other Asian	6	40	34	567
Asian/Asian British: Pakistani	18	13	-5	-28
Black/African/Caribbean/Black British: African	21	43	22	105
Black/African/Caribbean/Black British: Caribbean	63	70	7	11
Black/African/Caribbean/Black British: Other Black	12	7	-5	-42
Mixed/multiple ethnic group: Other Mixed	17	37	20	118
Mixed/multiple ethnic group: White and Asian	37	68	31	84
Mixed/multiple ethnic group: White and Black African	19	20	1	5
Mixed/multiple ethnic group: White and Black Caribbean	80	121	41	51
Other ethnic group: Any other ethnic group	9	33	24	267



Blaby and Glen Parva ED KS601EW : Economic Activity, 2001-11

Coloured bar - data for Electoral Division
Grey circle - average for all Leicestershire Electoral Divisions

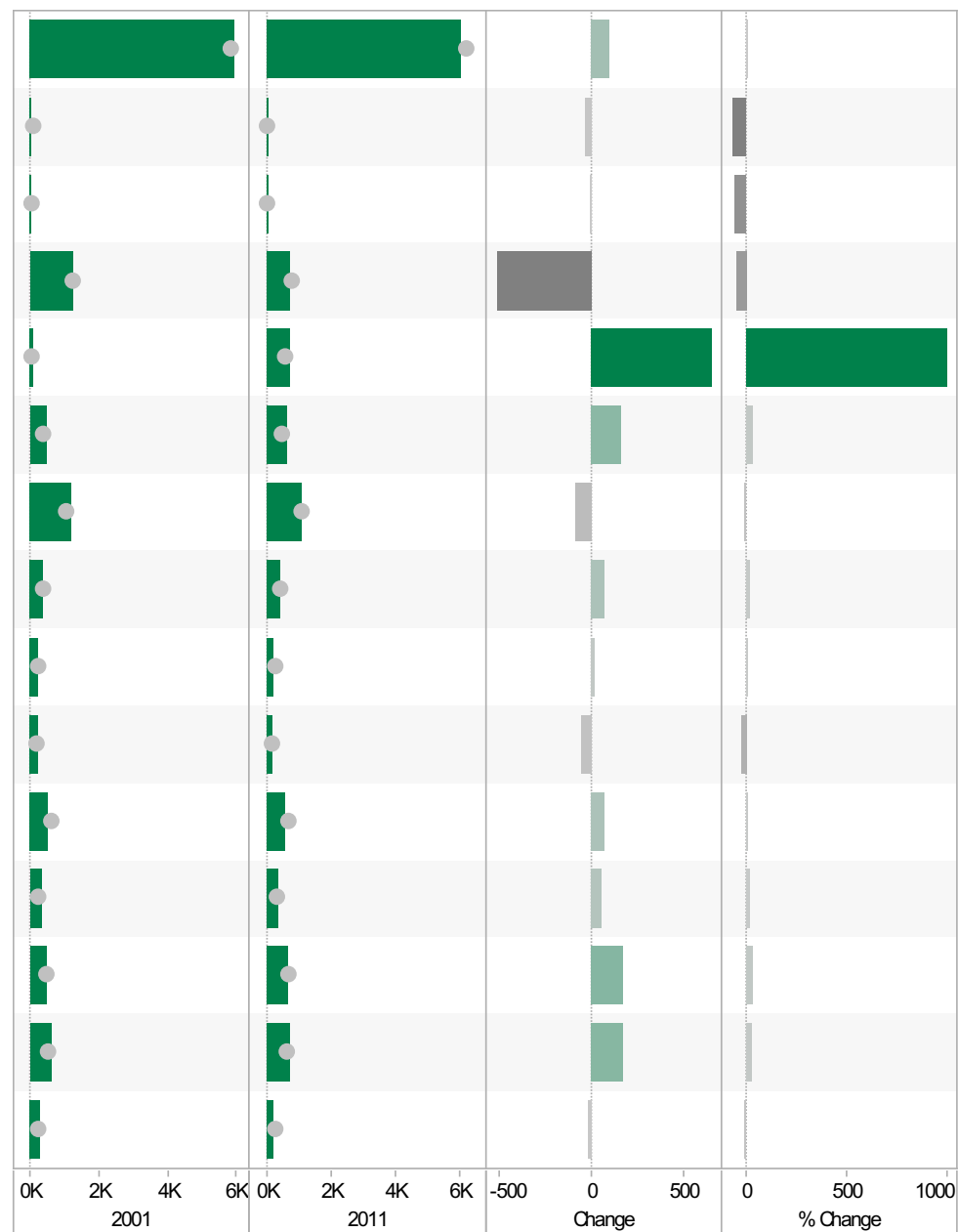
	2001	2011	Change	% Change
All usual residents aged 16 and over	8,920	9,165	245	3
Economically active: Employee: Full-time	3,817	3,629	-188	-5
Economically active: Employee: Part-time	1,232	1,360	128	10
Economically active: Full-time student	206	261	55	27
Economically active: Self-employed	707	850	143	20
Economically active: Unemployed	241	294	53	22
Economically inactive: Long-term sick or disabled	291	233	-58	-20
Economically inactive: Looking after home or family	342	244	-98	-29
Economically inactive: Other	643	499	-144	-22
Economically inactive: Retired	1,190	1,474	284	24
Economically inactive: Student (including full-time students)	251	321	70	28
Long-term unemployed	62	98	36	58
Unemployed: Age 16 to 24	112	102	-10	-9
Unemployed: Age 50 and over	44	58	14	32
Unemployed: Never worked	23	37	14	61



Blaby and Glen Parva ED
KS605EW : Industry, 2001-11

Coloured bar - data for Electoral Division
Grey circle - average for all Leicestershire Electoral Divisions

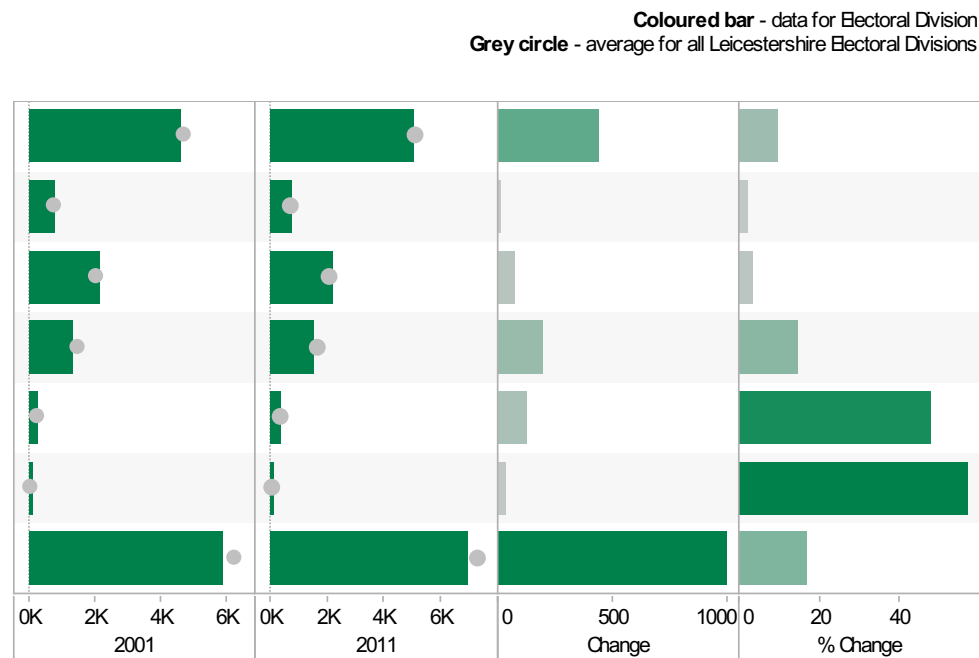
	2001	2011	Change	% Change
All usual residents aged 16 and over in employment	5,941	6,038	97	2
A Agriculture, forestry and fishing	44	15	-29	-66
B Mining and quarrying	12	6	-6	-50
C Manufacturing	1,219	709	-510	-42
D, F Electricity, gas, steam, air conditioning supply, water and sewerage	65	715	650	1,000
F Construction	478	639	161	34
G Wholesale and retail trade; repair of motor vehicles and motor cycles	1,190	1,101	-89	-7
H, J Transport, storage, information and communication	349	424	75	21
I Accommodation and food service activities	206	227	21	10
K Financial and insurance activities	215	166	-49	-23
L, M, N Real estate activities Professional, scientific and technical activities Administrative and support service activities	517	592	75	15
O Public administration and defence; compulsory social security	335	390	55	16
P Education	482	658	176	37
Q Human health and social work activities	584	756	172	29
R, S, T, U Other	245	231	-14	-6



Source: Office for National Statistics (ONS), 2013.
 Produced by the Research and Insight Team, Leicestershire County Council.

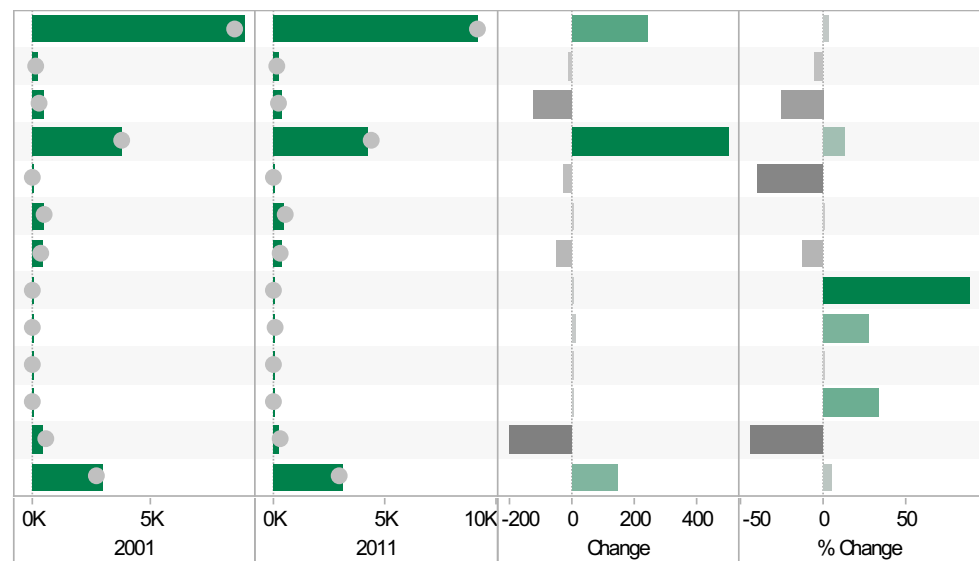
Blaby and Glen Parva ED KS404EW : Car and Van Availability, 2001-11

	2001	2011	Change	% Change
All Households	4,599	5,042	443	10
No Cars or Vans in Household	774	789	15	2
1 Car or Van in Household	2,158	2,229	71	3
2 Cars or Vans in Household	1,341	1,536	195	15
3 Cars or Vans in Household	256	378	122	48
4 or More Cars or Vans in Household	70	110	40	57
All Cars or Vans in the Area	5,906	6,908	1,002	17



Blaby and Glen Parva ED QS701EW : Method of Travel to Work, 2001-11

	2001	2011	Change	% Change
All Usual Residents Aged 16 to 74	8,921	9,165	244	3
Bicycle	238	225	-13	-5
Bus, Minibus or Coach	500	374	-126	-25
Driving a Car or Van	3,739	4,239	500	13
Motorcycle, Scooter or Moped	75	45	-30	-40
On Foot	474	472	-2	0
Passenger in a Car or Van	392	344	-48	-12
Taxi	8	15	7	88
Train	29	37	8	28
Underground, Metro, Light Rail, Tram	6	6	0	0
Other Method of Travel to Work	18	24	6	33
Work Mainly at or From Home	461	257	-204	-44
Not in Employment	2,981	3,127	146	5



If you require information contained in this leaflet in another version e.g. large print, Braille, tape or alternative language please telephone: 0116 305 6803, Fax: 0116 305 7271 or Minicom: 0116 305 6160.

ਜੇ ਆਪ ਆ ਮਾਭਿਨੀ ਆਪਨੀ ਆਧਾਮਾਂ ਸਮਝਵਾਮਾਂ ਥੋੜੀ ਮਦਦ ਈਝਤਾਂ ਡੋ ਤੋ 0116 305 6803 ਨੰਬਰ ਪਰ ਝੋਨ ਕਰਥੋ ਅਨੇ ਅਮੇ ਆਪਨੇ ਮਦਦ ਕਰਵਾ ਅਵਥਾ ਕਰੀਥੁੰ.

ਜੇਕਰ ਤੁਹਾਨੂੰ ਇਸ ਜਾਣਕਾਰੀ ਨੂੰ ਸਮਝਣ ਵਿਚ ਕੁਝ ਮਦਦ ਚਾਹੀਦੀ ਹੈ ਤਾਂ ਕਿਰਪਾ ਕਰਕੇ 0116 305 6803 ਨੰਬਰ ਤੇ ਫੋਨ ਕਰੋ ਅਤੇ ਅਸੀਂ ਤੁਹਾਡੀ ਮਦਦ ਲਈ ਕਿਸੇ ਦਾ ਪ੍ਰਬੰਧ ਕਰ ਦਵਾਂਗੇ।

এই তথ্য নিজের ভাষায় বুঝার জন্য আপনার যদি কোন সাহায্যের প্রয়োজন হয়, তবে 0116 305 6803 এই নম্বরে ফোন করলে আমরা উপযুক্ত ব্যক্তির ব্যবস্থা করবো।

اگر آپ کو یہ معلومات سمجھنے میں کچھ مدد درکار ہے تو براہ مہربانی اس نمبر پر کال کریں اور ہم آپ کی مدد کے لئے کسی کا انتظام کر دیں گے۔ 0116 305 6803

假如閣下需要幫助，用你的語言去明白這些資訊，請致電 0116 305 6803，我們會安排有關人員為你提供幫助。

Jeżeli potrzebujesz pomocy w zrozumieniu tej informacji w Twoim języku, zadzwoń pod numer 0116 305 6803, a my Ci dopomożemy.

Research & Insight Team
Strategy, Partnerships & Communities
Chief Executive's Department
Leicestershire County Council
County Hall
Glenfield
Leicester
LE3 8RA

ri@leics.gov.uk
www.lsr-online.org