

Places in Blaby

October 2007

Contact Details

Nicole Rickard
Policy Team Leader

Policy Research & Information Group
Leicestershire County Council
County Hall
Glenfield
LE3 8RA

T 0116 305 6977
E nrickard@leics.gov.uk

Donna Mackay
Senior Policy Officer

Policy Research & Information Group
Leicestershire County Council
County Hall
Glenfield
LE3 8RA

T 0116 305 8137
E dmackay@leics.gov.uk

Whilst every effort has been made to ensure the accuracy of the data contained in this report, the County Council can accept no responsibility for any errors or omissions.

Contents

Introduction	5
Map 1 - Blaby District	6
Map 2 - Community Forums	7
1. Blaby Central Community Forum	10
1.1 Key Rural Centres	10
1.1.1 Blaby	10
1.1.2 Countesthorpe	10
Map 3 - Blaby Central Community Forum	11
1.1.3 Narborough	12
1.1.4 Whetstone	12
1.2 Urban Fringe	12
1.3 Rural Area	13
2. Blaby North Community Forum	14
2.1 Priority Neighbourhoods	14
2.2.1 Enderby	14
2.2 Urban Fringe	14
Map 4 - Blaby North Community Forum	15
3. Blaby South Community Forum	18
3.1 Key Rural Centres	18
3.1.1. Sapcote	18
3.1.2 Stoney Stanton	18
2.2 Rural Area	18
Map 5 - Blaby South Community Forum	19
Appendix	21
List of Community Forum Areas and LSOAs	21
Map 6 - Output Area Classification	22
Further Information	23

The page left blank for double-sided printing

Places in Leicestershire - Blaby

The map on page 6 shows Blaby District, including the main towns and the key rural service centres.

Introduction

The purpose of this “Places in Leicestershire” report is to highlight the priorities for individual places in Leicestershire. This will enable us to identify place based priority outcomes for inclusion in the Leicestershire Sustainable Community Strategy and Local Area Agreement.

The seven reports covering Leicestershire are divided into chapters structured around the key places in each District, arranged by the 27 Community Forums currently being established around the County.

The map on page 7 shows the location of the 27 Community Forums in Leicestershire. There are 3 Community Forums in Blaby District.

Types of Places

The key places are divided into:

Main Towns – these 17 settlements are identified in the Local Area Agreement as key large service centres which provide health services, employment, education, leisure and shopping facilities for the surrounding population

Priority Neighbourhoods – identified in the Local Area Agreement 2006-09, these 19 neighbourhoods are small areas of the county with bigger than average problems, usually in relation to a number of aspects of deprivation (see Indices of Deprivation below)

Rural/Service Centres – these are smaller service centres, identified through the Leicestershire Rural Partnership, that provide a range of facilities for the surrounding rural villages and hamlets. They vary in size, but they are all a focal point for a cluster of smaller settlements

Rural Areas – this section of each chapter covers the rural parts of each Forum area and identifies the priorities, based on aspects of deprivation identified through the Indices of Deprivation, poor access to services (Access to Services report) or specific needs identified through a Parish Plan (see below).

A list of each type of settlement in Blaby is shown below:

Main Towns

- Blaby

Priority Neighbourhoods

- Enderby

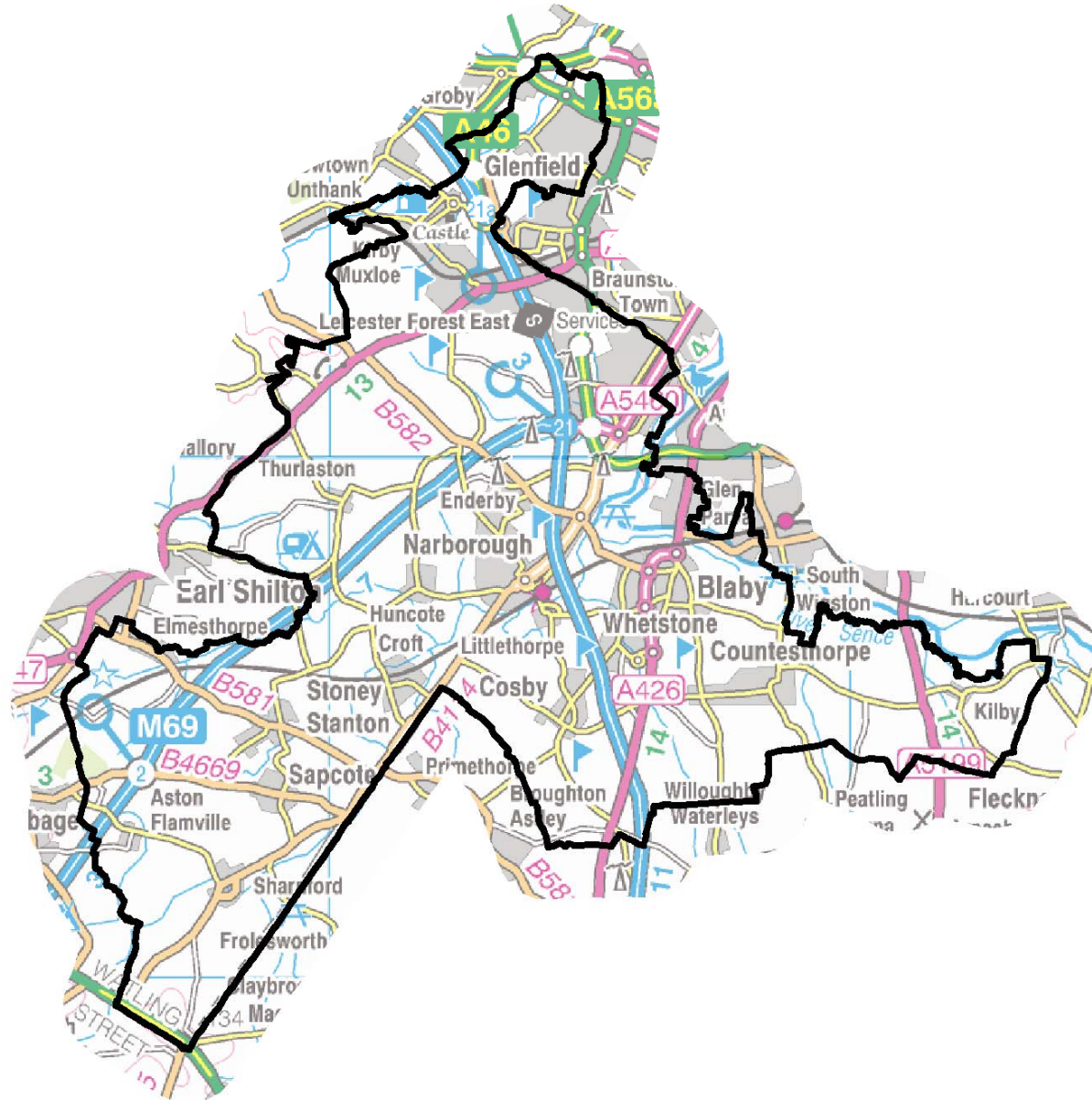
Rural Centres

- Blaby
- Countesthorpe
- Narborough
- Sapcote
- Stoney Stanton

Rural Communities completing Parish Plans

- Croft
- Countesthorpe
- Leicester Forest East

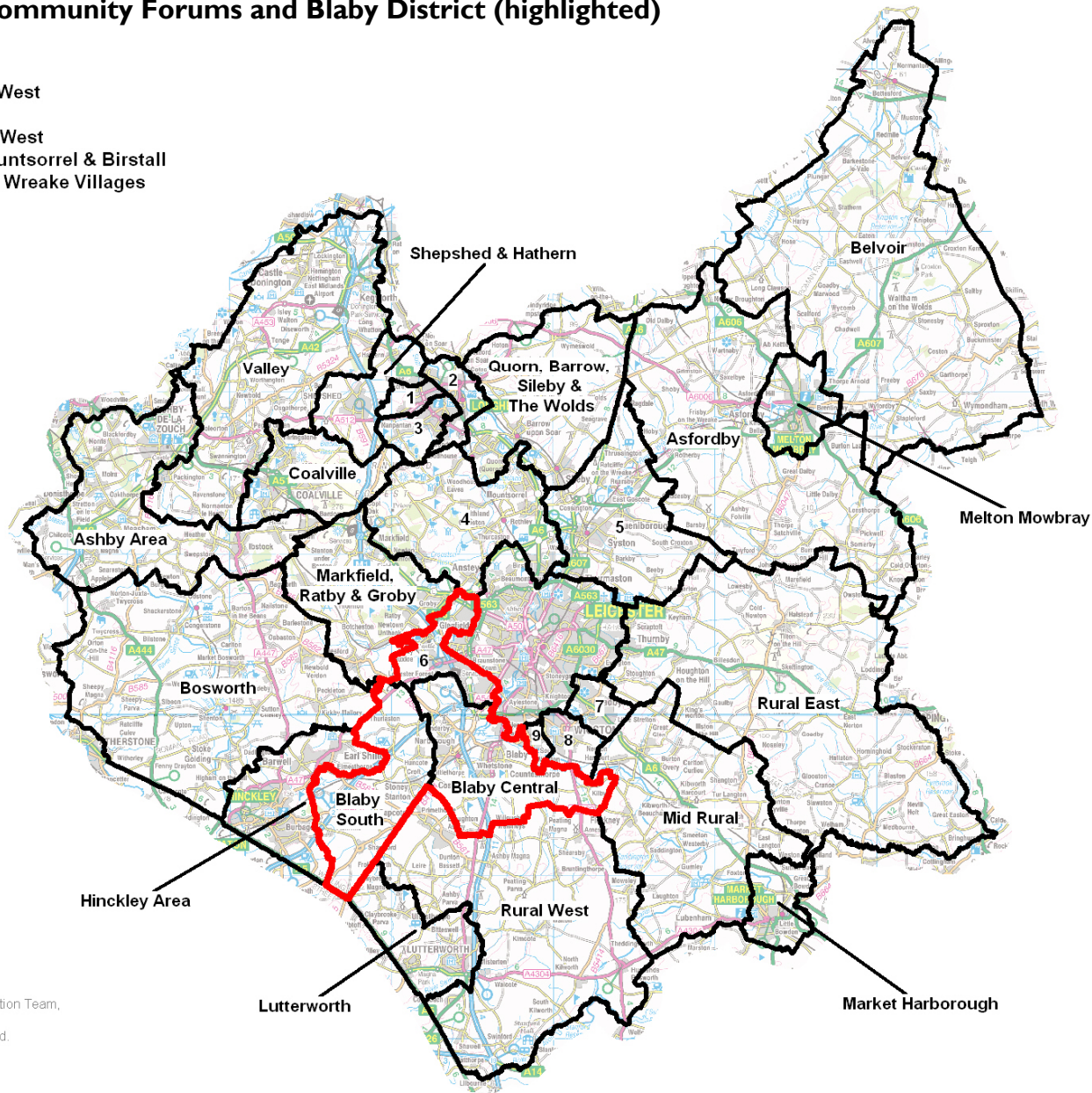
Map I - Blaby District



Produced by the Research & Information Team,
Leicestershire County Council.
© Crown Copyright. All rights reserved.
Leicestershire County Council.
LA100019271. Published 2007.

Map 2 - Leicestershire Community Forums and Blaby District (highlighted)

1. Loughborough North-West
2. Loughborough East
3. Loughborough South-West
4. Bradgate, Rothley, Mountsorrel & Birstall
5. Syston, Thurmaston & Wreake Villages
6. Blaby North
7. Oadby
8. Wigston
9. South Wigston



Produced by the Research & Information Team,
Leicestershire County Council.
© Crown Copyright. All rights reserved.
Leicestershire County Council.
LA100019271. Published 2007.

Information Sources

A range of information sources have been used to develop these sections, a short description of each is below:

Indices of Deprivation 2004 - The Indices are produced by the Office of the Deputy Prime Minister with the aim of measuring deprivation in a consistent way across England. The indices include measures relating to Income Deprivation, Employment Deprivation, Health Deprivation and Disability, Education, Skills and Training Deprivation, Barriers to Housing and Services, Living Environment Deprivation and Crime. Leicestershire is ranked 135 out of the 149 county/unitary authorities in England (where 149 = least deprived).

Find Out More:

http://website/index/your_council/about_leicestershire/statistics/indices_of_deprivation_2004.htm

Ten most deprived LSOAs in Leicestershire:
Index of Multiple Deprivation

LSOA Code	Ward	District	IMD Score	National Rank
E01025699	Loughborough Hastings	Charnwood	44.78	3,344
E01025934	Greenhill	NW Leicestershire	43.69	3,594
E01025932	Greenhill	NW Leicestershire	41.96	4,037
E01025725	Loughborough Storer	Charnwood	38.51	5,056
E01025717	Loughborough Shelthorpe	Charnwood	37.99	5,232
E01025700	Loughborough Hastings	Charnwood	31.81	7,402
E01025949	Measham	NW Leicestershire	30.32	8,011
E01025844	Earl Shilton	Hinckley & Bosworth	29.75	8,230
E01025718	Loughborough Southfields	Charnwood	28.83	8,657
E01025930	Coalville	NW Leicestershire	28.76	8,683

(Rank: 1=most deprived in England, 32,482=least deprived in England)

Super Output Areas

Super Output Area (SOA) lower level is a new national geography created by the Office for National Statistics. These areas are created by combining a number of Output Areas (created for the 2001 Census). LSOAs are areas of broadly consistent population size across the country - approximately 1,500 people. They are often referred to in the text as LSOAs.

If a LSOA is described as experiencing moderate levels of deprivation, this means that it is in the bottom 20% of LSOAs in Leicestershire. Where a LSOA is described as experiencing significant deprivation, it is in the bottom 10% in Leicestershire.

Town and Village Centres Survey - This work was carried out by BMG Research on behalf of Leicestershire County Council and Leicester Shire Economic Partnership in 2006. The research was based upon a customer satisfaction survey of visitors and users in the 17 Main Towns identified above. A main report is accompanied by a shorter report for each individual town or village centre.

Find out more:

<http://www.lsint.info/downloads/Leicestershire%20Town%20and%20Village%20Survey%20Final%20Report.pdf>

Parish Plans – a parish plan is led by a cross-section of local people and focussed around the outcomes of a questionnaire survey, which are analysed and used to produce a summary report and action plan. More than 25% of parishes in Leicestershire have conducted a Parish Plan - this report focuses on Parish Plans completed over the last 3 years.

Find Out More: <http://www.ruralcc.org.uk/parishplans.html>

Access to Services report – this research by the Leicestershire Rural Partnership identifies the number of service outlets and the diversity of the service types within each Leicestershire parish under 5,000 population. Five groups of parishes have been identified, based on a similarity in their service coverage and diversity.

Group 1: No services or skeletal service provision

Group 2: Minimal service provision

Group 3: Medium service provision

Group 4: Good service provision

Group 5: Very good service provision

This report highlights parishes with no, skeletal or minimal service provision.

Social Capital Survey – The Social Capital Survey (2006) targeted 20 Lower Super Output Areas (LSOAs) across the County. These were identified by the District Local Strategic Partnerships and covered “deprived”, “average” and “rural” communities. The survey work was conducted mainly by volunteers who surveyed 10% of the adult population in each area.

Find Out More:

<http://www.ccp.org.uk/thesocialcapitalsurvey.html>

I. Blaby Central Community Forum

The map overleaf (Map 3) shows the Blaby Central Community Forum with LSOAs and Neighbourhood Priority Area.

There are no Main Towns or Priority Neighbourhoods within this Community Forum area. The Forum area consists of the key rural centres of Blaby, Countesthorpe, Narborough and Whetstone, an area of urban fringe and a wider rural area.

Blaby has been identified as a growth location in the Draft Regional Plan, with reference made to locating a Sustainable Urban Extension 'adjoining the Leicester Principal Urban Area within Blaby district'. The Draft Regional Plan proposes a SUE of 4000 dwellings. Revised advice from the County Council has adjusted this figure to 3750 dwellings plus a strategic employment site of 25 hectares.

I.1 Key Rural Centres

I.1.1 Blaby

Indices of multiple deprivation

Blaby town is covered by 3 LSOAs; Blaby Centre (E01025610), Blaby South West (E01025611) and Blaby North (E01025659). Blaby South East (E01025612) is mainly a rural area to the South West of the town and is included in the section on rural areas.

Blaby Centre LSOA exhibits moderate deprivation in terms of employment, health, and education training and skills.

Blaby North LSOA exhibits moderate deprivation in terms of the living environment and crime.

Leicestershire Town and Village Centre Survey

Overall, respondents were positive about the environment and facilities in and around the centre of Blaby.

A wider range of shops and retail facilities, more cultural or entertainment facilities and free parking were the improvements most likely to encourage more people to come to Blaby more often.

Having a greater range of shops and more specialist shops were seen as the areas within Blaby that needed the most attention.

Rubbish and litter lying around, groups of people hanging around the street and street canvassers were seen as the most significant problems in Blaby.

I.1.2 Countesthorpe

Indices of multiple deprivation

Countesthorpe is covered by 3 LSOAs; Countesthorpe West (E01025616), Countesthorpe Centre (E01025618) and Countesthorpe North (E01025619).

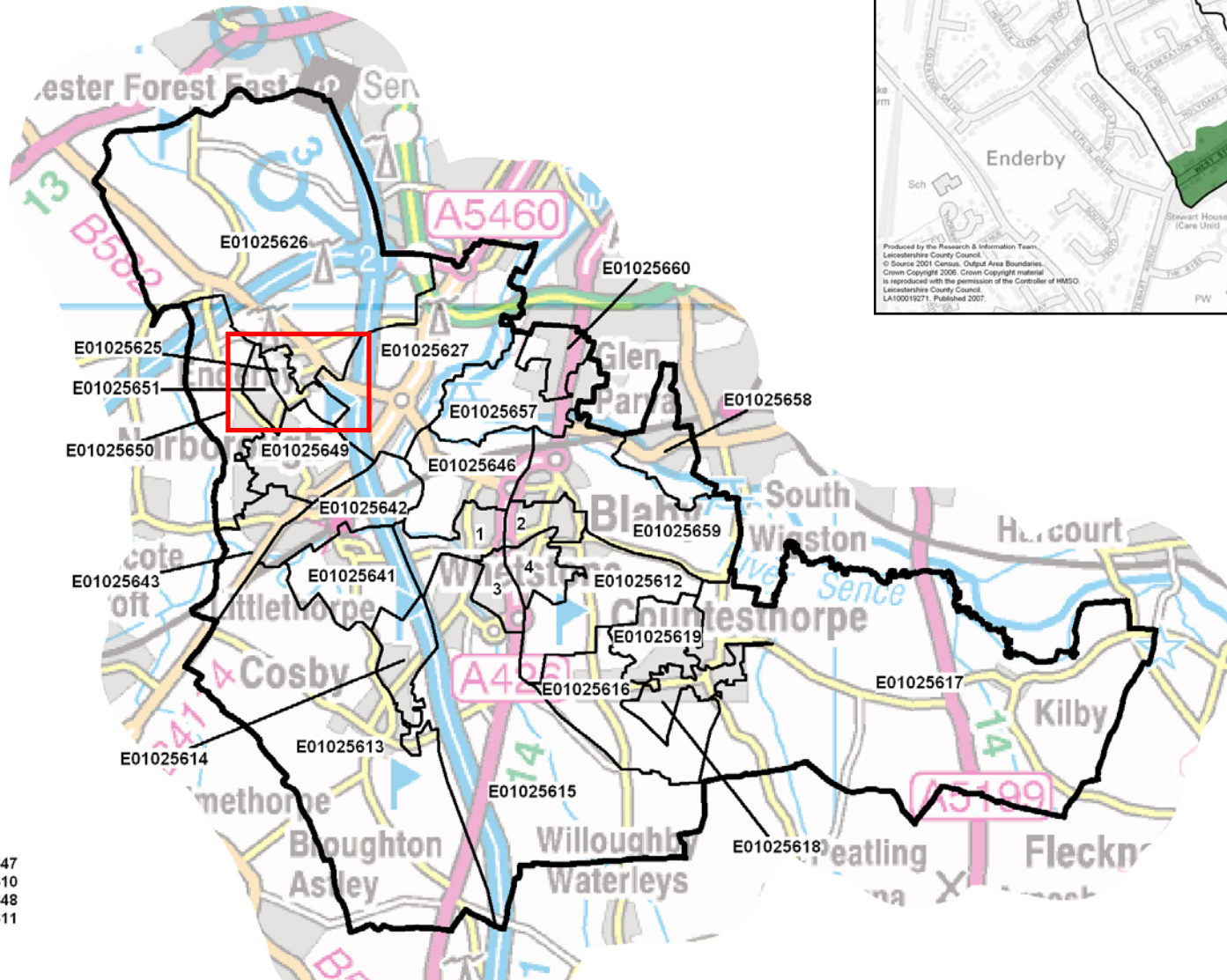
Countesthorpe North LSOA exhibits moderate levels of older people living in households affected by income deprivation.

Parish Plan

A Parish Plan was developed in Countesthorpe in 2006 / 2007. The key issues identified in the plan were;

- A heritage group should be formed
- Greater retail provision

Map 3 - Blaby Central Community Forum and Neighbourhood Priority Areas



- 1. E01025647
- 2. E01025610
- 3. E01025648
- 4. E01025611



Above: Enderby Priority Area

Produced by the Research & Information Team,
Leicestershire County Council.
© Source 2001 Census, Output Area Boundaries.
Crown Copyright 2006. Crown Copyright material
is reproduced with the permission of the Controller of HMSO,
Leicestershire County Council.
LA100019271. Published 2007.

- Improving footpaths and bridleways, including signage
- Poor evening and morning bus services
- Nature conservation should be incorporated into future planning
- Plant more trees and floral displays
- Increase police visibility

1.1.3 Narborough

Indices of multiple deprivation

Narborough is covered by 4 LSOAs; Narborough East (E01025642), Narborough South (E01025643), Narborough North (E01025649) and Narborough West (E01025650).

Narborough North LSOA exhibits a moderate level of older people living in income deprived households.

1.1.4 Whetstone

Indices of multiple deprivation

Whetstone is covered by 3 LSOAs: Whetstone North (E01025646), Whetstone Centre (E01025647) and Whetstone South East (E01025648).

Whetstone North LSOA exhibits moderate deprivation in terms of income, the levels of children and older people living in income affected households, and the living environment.

Social Capital Survey

A social capital survey was conducted in Whetstone Centre (E01025647)

The responses to the survey from people living in this part of Whetstone were generally very similar to the average responses for all other areas surveyed.

The networks people mix with were generally comparable with the average for all other areas surveyed. However, more people in Whetstone like to mix with those who are the same religion or faith as themselves.

More people in Whetstone said it is likely they could get help from a neighbour. More people in Whetstone tend to feel that it is important to contribute to their community compared with the other areas. Along with this, more people said they had thought about participating in their community, but did not do anything.

In Whetstone more people than the average of other areas surveyed considered they can influence decisions affecting their area when working with others in the neighbourhood.

A higher proportion of those surveyed felt that people in their neighbourhood tended to get on well with people of different backgrounds

A higher proportion of those surveyed compared to the survey as a whole felt that people in their neighbourhood could be trusted and a higher proportion of those surveyed are satisfied with the overall delivery of public services

1.2 Urban Fringe

Blaby Central Community Forum borders Leicester, Wigston and north of Blaby.

Indices of multiple deprivation

The area is covered by 3 LSOAs; Glen Parva West (E01025657) Glen Parva South (E01025658) and Glen Parva North (E01025660).

The area does not exhibit any significant or moderate levels of deprivation.

1.3 Rural Area

Indices of multiple deprivation

The rural part of the Forum area includes the areas not covered above. The area is covered by 6 LSOAs. Of these, Whetstone South West LSOA experiences moderate deprivation in relation to barriers to services

2. Blaby North Community Forum

The map overleaf (Map 4) shows the Blaby North Community Forum with LSOAs.

The Community Forum includes the priority neighbourhood of Enderby and a large urban fringe area. There are no main towns in this Community Forum area.

2.1 Priority Neighbourhoods

2.2.1 Enderby

The Enderby Neighbourhood Profile will be published in Autumn/ Winter 2007.

2.2 Urban Fringe

This area is to the west of Leicester and borders the boundary of Leicester City. The area includes Kirby Muxloe, Glenfield, Fosse Park and Braunstone Town (the whole of the area apart from the Enderby Priority Neighbourhood). In total this area is covered by 25 LSOAs.

Indices of multiple deprivation

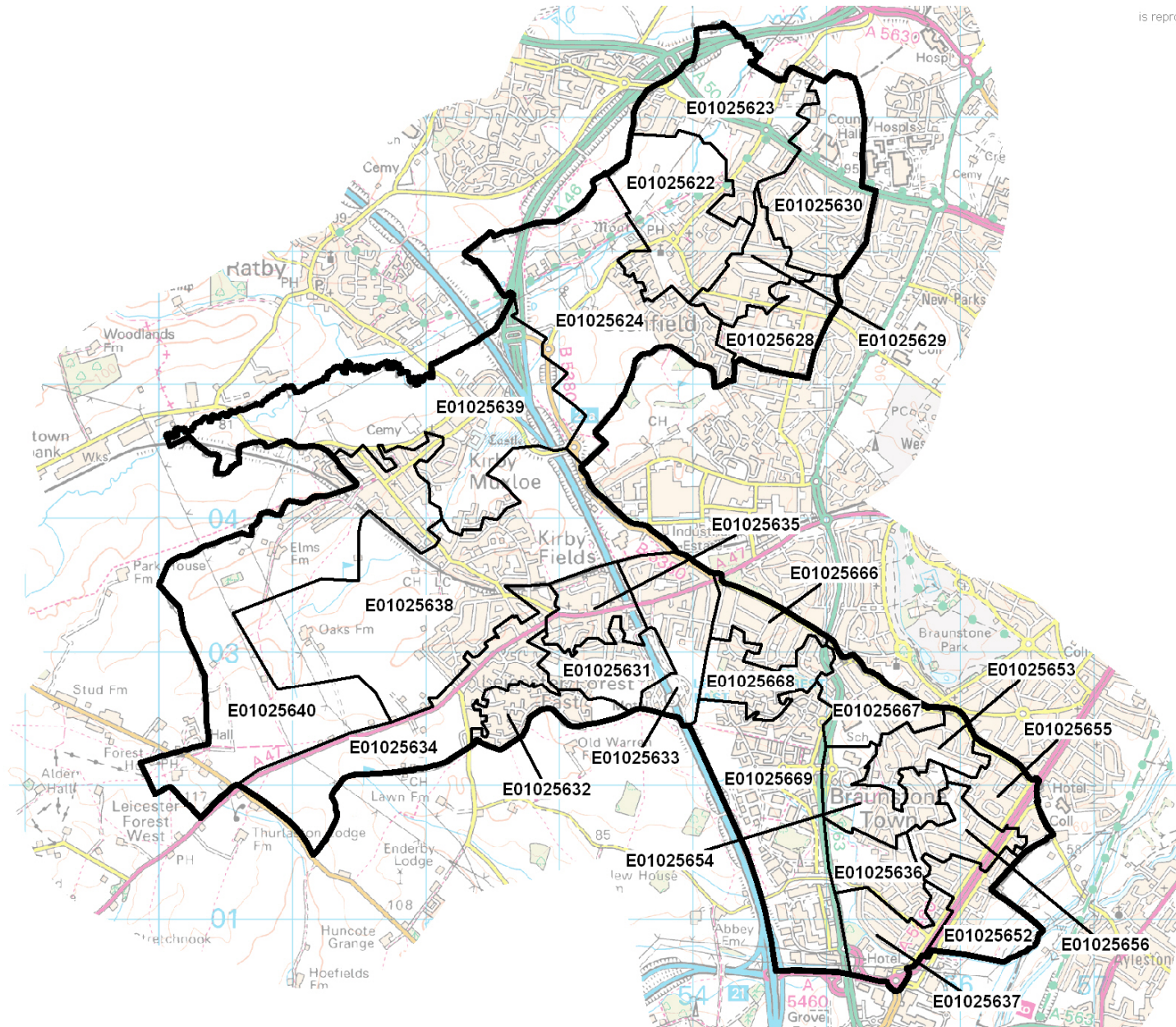
Braunstone Town Woodland Drive LSOA (E01025666) exhibits moderate multiple deprivation.

There are a number of pockets of significant and moderate deprivation for a number of measures within the Forum area. These are summarised in the table below and on page 16.

	Income	Income affecting children	Income affecting older people	Employment	Education	Crime	Health	Living Environment	Barriers to Services
Narborough Road South LSOA (E01025652)	-	-	-	M	-	-	-	-	-
Braunstone Town, Cleverley Avenue LSOA (E01025655)	-	-	-	M	-	-	-	S	
Braunstone Town, Turnbull Avenue LSOA (E01025656)	-	-	-	M	-	-	-	-	
Braunstone Town, Henley Crescent LSOA (E01025653)	-	-	-	-	M	M	-	M	
Meridian Leisure Park LSOA (E01025654)	-	-	-	-	-	M	-	-	-
Braunstone Town, Woodland Drive LSOA (E01025666)	-	-	-	M	S			M	
Winstanley Community College LSOA (E01025667)	-	-	-	-	-	S	-	-	
Thorpe Astley North LSOA (E01025668)	-	-	-	-	-	-	-	-	M
Thorpe Astley South and Meridian Business Park LSOA (E01025669)	-	-	-	-	-	-	-	-	S
Glenfield North West LSOA (E01025623)	-	-	-	-	-	M	-	-	M

Map 4 - Blaby North Community Forum

Produced by the Research & Information Team,
Leicestershire County Council.
© Source 2001 Census, Output Area Boundaries,
Crown Copyright 2006. Crown Copyright material
is reproduced with the permission of the Controller of HMSO.
Leicestershire County Council.
LA100019271. Published 2007.



	Income	Income affecting children	Income affecting older people	Employment	Education	Crime	Health	Living Environment	Barriers to Services
Glenfield South East LSOA (E01025628)	-	-	-	M	-	-	-	-	
Glenfield East LSOA (E01025629)	-	-	-	M	M	-	-	-	-
Glenfield North East LSOA (E01025630)	-	-	-	S	-	-	-	-	
Leicester Forest East, South LSOA (E01025632)	-	-	S	-	-	-	-	-	S
Kirby Muxloe South LSOA (E01025638)	-	-	-	-	-	-	-	-	M
Leicester Forest East – M1 Services LSOA (E01025633)	-	-	-	-	-	-	-	M	-
Braunstone Town Lubbethorpe Road LSOA (E01025637)	-	-	-	-	-	M	-	-	-
Leicester Forest East, West LSOA (E01025634)	-	-	M	-	-	-	-	-	-

“S” = Significant deprivation and within the 10% most deprived in Leicestershire

“M” = Moderate deprivation and within the 20% most deprived in Leicestershire

“-” = Not within the 20% most deprived LSOAs in Leicestershire

Parish Plan

Within this area, one Parish Plan was completed in Leicester Forest East in 2005 / 2006 . As a result of research undertaken during the development of the Parish Plan, a number of issues of concern were identified. These were;

- Improved stock at the library
- Better physical access to surgeries and shops
- Bus service to link Fosse Park/Beaumont Leys/Glenfield Hospital
- 20mph speed limit needed around schools
- Do not want the M1 to be widened through the Parish
- Desire for a dedicated youth centre

Social Capital Survey

The survey was conducted in Braunstone Town Woodland Drive LSOA (E01025664).

Braunstone has a strong sense of belonging to Leicestershire in comparison with other areas surveyed but fewer people on average, however, said they feel they belong to their neighbourhood.

Compared to the average for other areas, less people in Braunstone said that, overall, their neighbourhood is a good place to live.

Overall, the survey showed that people in Braunstone have quite strong networks compared with the other areas. More people surveyed socialise with friends and family. Also the survey showed that more people from Braunstone had visited someone in the last week than in other areas.

Fewer people in Braunstone said they have volunteered or given unpaid

help to anyone except relatives in the last year compared to the average of the other areas surveyed. However, participation is strong overall in Braunstone. This is because more people in Braunstone said they had initiated local activities, campaigns or networks and attended public meetings or neighbourhood forum to discuss local issues. Also more people in Braunstone said they had contacted a local radio station, TV station or newspaper in the last year compared with elsewhere.

A lower proportion of those surveyed (18%) compared to the survey as a whole (43%) felt that their neighbours could be trusted.

Access to services report

The report identifies the Parish of Leicester Forest West as having no services or skeletal services.

3. Blaby South Community Forum

The map overleaf (Map 5) shows the Blaby South Community Forum with LSOAs.

There are no Main Towns or Priority Neighbourhoods within this Community Forum area. The Forum area consists of two key rural centres – Sapcote and Stoney Stanton and a wider rural area.

3.1 Key Rural Centres

3.1.1 Sapcote

Indices of multiple deprivation

Sapcote is covered by a single LSOA; Sapcote North (E01025665). The area does not exhibit any significant or moderate levels of deprivation.

1.1.5 Stoney Stanton

Indices of multiple deprivation

Stoney Stanton is covered by 2 LSOAs; Stoney Stanton West LSOA (E01025661) and Stoney Stanton East LSOA (E01025663). The area does not exhibit any significant or moderate levels of deprivation.

1.3 Rural Area

Indices of multiple deprivation

The rural part of the Forum area includes the areas not covered above. The area is covered by 6 LSOAs. Three of these areas display some moderate or significant deprivation.

These are summarised in the table below.

	Income	Income affecting children	Income affecting older people	Employment	Education	Crime	Health	Living Environment	Barriers to Services
Elmesthorpe and Potters Marston LSOA (E01025621)	-	-	-	-	-	-	-	-	M
Aston Flamville and Sharnford LSOA (E01025664)	M	M	-	-	-	-	-	-	-
Stoney Stanton South and Sapcote South LSOA (E01025662)	-	-	S	-	-	-	-	-	-

“S” = Significant deprivation and within the 10% most deprived in Leicestershire

“M” = Moderate deprivation and within the 20% most deprived in Leicestershire

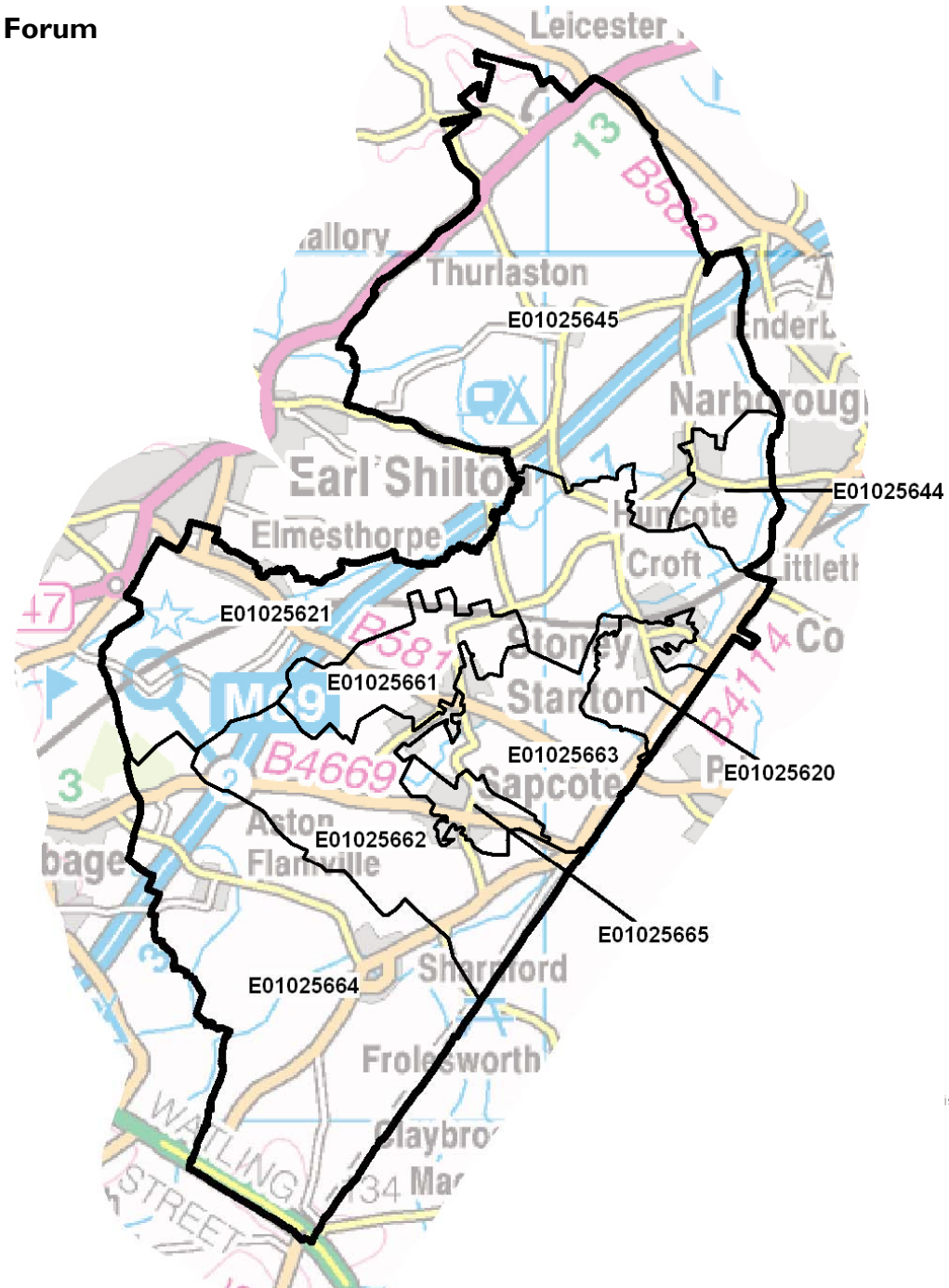
“-” = Not within the 20% most deprived LSOAs in Leicestershire

Parish Plans

One Parish Plan has been completed in recent years, at Croft in 2004 / 2005. The key issues identified in the plan include;

- Concern over vandalism and theft
- Make more use of the church for community events
- Improved youth facilities
- Developed adult education provision
- Poor bus reliability
- Traffic speeds

Map 5 - Blaby South Community Forum



Produced by the Research & Information Team,
Leicestershire County Council.
© Source 2001 Census, Output Area Boundaries.
Crown Copyright 2006. Crown Copyright material
is reproduced with the permission of the Controller of HMSO.
Leicestershire County Council.
LA100019271. Published 2007.

- More dog and waste bins

Access to services report

The report identifies the parishes of Ashby Flamville, and Potters Marston as having minimal services.

Social Capital Survey

A social capital survey was conducted in Sharnford LSOA (E01025664).

Respondents to the survey from Sharnford had a stronger perception of neighbourliness than the other areas surveyed. Respondents commented that their neighbourhood is a close-knit community, a friendly place to live and one where people from different backgrounds get on well together.

People from Sharnford felt more strongly that people could be trusted—both generally and in their own neighbourhood. They were believed that it was important to contribute to their community and this was reflected in higher volunteering—both formal (to groups) and informal (helping friends and neighbours).

People from Sharnford were less likely to contact the media or elected members, or attending meetings about local issues.

A lower proportion of those surveyed (8%) compared to the survey as a whole (16%) felt they could influence decisions that affected their area.

Appendix

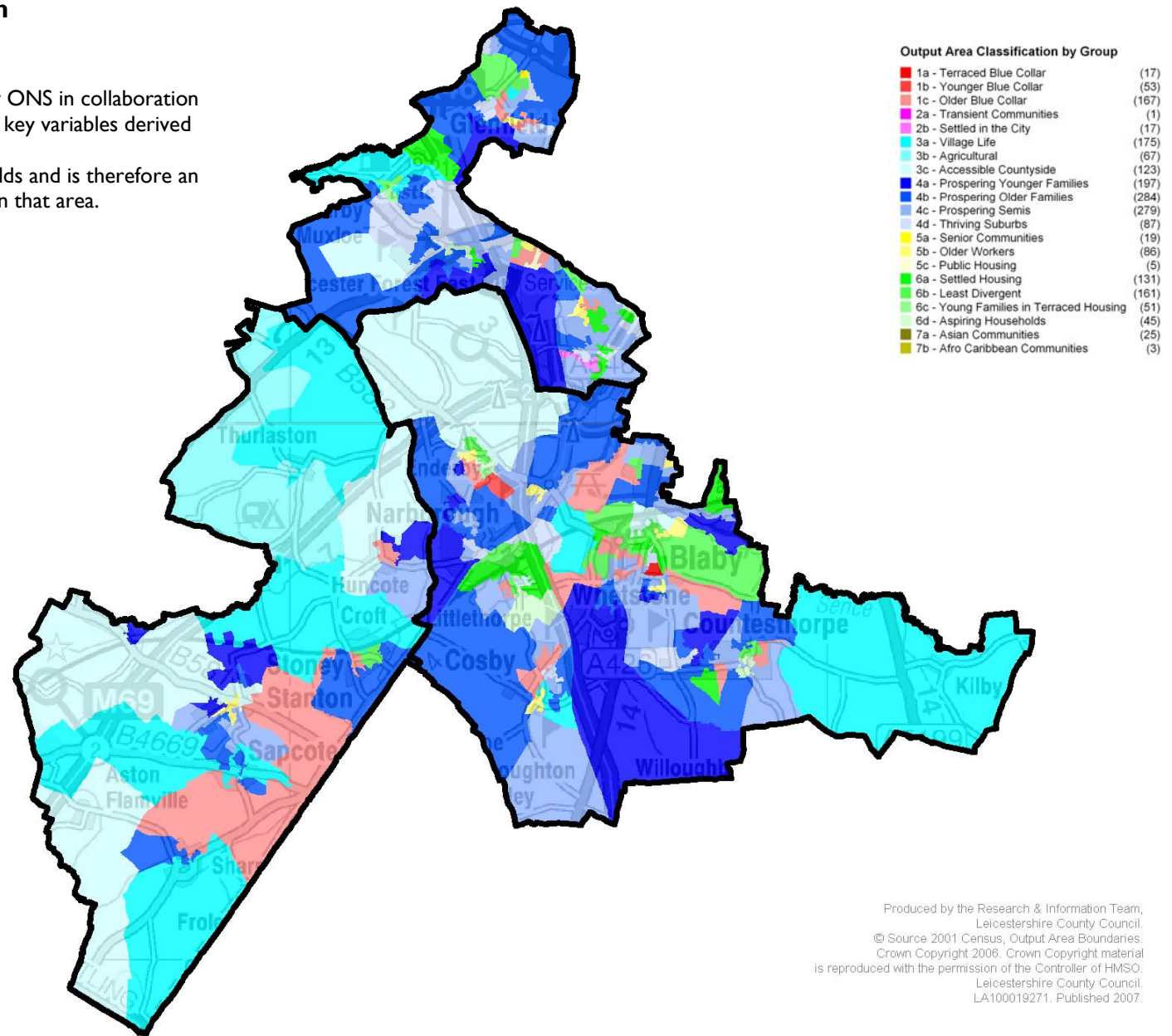
List of Community Forums and LSOAs

Community Forum	LSOA Code	Name
Blaby Central	E01025610	Blaby Centre
	E01025611	Blaby South West
	E01025612	Blaby South East
	E01025613	Cosby South
	E01025614	Cosby North
	E01025615	Whetstone South West
	E01025616	Countesthorpe West
	E01025617	Countesthorpe East, Kilby & Foston
	E01025618	Countesthorpe Centre
	E01025619	Countesthorpe North
	E01025625	Enderby Centre
	E01025626	Enderby North & Grove Park
	E01025627	Fosse Park
	E01025641	Littlethorpe
	E01025642	Narborough East
	E01025643	Narborough South
	E01025646	Whetstone North
	E01025647	Whetstone Centre
	E01025648	Whetstone South East
	E01025649	Narborough North
	E01025650	Narborough West
	E01025651	Enderby South
	E01025657	Glen Parva West
	E01025658	Glen Parva South
	E01025659	Blaby North
	E01025660	Glen Parva North
Blaby North	E01025622	Glenfield West
	E01025623	Glenfield North West
	E01025624	Glenfield South West
	E01025628	Glenfield South East
	E01025629	Glenfield East
	E01025630	Glenfield North East
	E01025631	Leicester Forest East - East
	E01025632	Leicester Forest East - South
	E01025633	Leicester Forest East - MI Services
	E01025634	Leicester Forest East - West
	E01025635	Leicester Forest East - North
	E01025636	Braunstone Town The Osiers
	E01025637	Braunstone Town Lubbesthrope Road
	E01025638	Kirby Muxloe South

Community Forum	LSOA Code	Name
Blaby North (cont)	E01025639	Kirby Muxloe East
	E01025640	Kirby Muxloe West
	E01025652	Narborough Road South
	E01025653	Braunstone Town Henley Crescent
	E01025654	Meridian Leisure Park
	E01025655	Braunstone Town Cleveley Avenue
	E01025656	Braunstone Town Turnbull Drive
	E01025666	Braunstone Town Woodland Drive
	E01025667	Winstanley Community College
	E01025668	Thorpe Astley North
E01025669	Thorpe Astley South & Meridian Business Park	
Blaby South	E01025620	Croft
	E01025621	Elmesthorpe & Potters Marston
	E01025644	Huncote East
	E01025645	Huncote West & Thurlaston
	E01025661	Stoney Stanton West
	E01025662	Stoney Stanton South & Sapcote South
	E01025663	Stoney Stanton East
	E01025664	Aston Flamville & Sharnford
	E01025665	Sapcote North

Map 6 - Output Area Classification

Output Area Classifications were developed by ONS in collaboration with Leeds University. It is based on a number of key variables derived from the 2001 Census. The information is based on residents/households and is therefore an accurate reflection of the community that live in that area.



Produced by the Research & Information Team,
Leicestershire County Council.
© Source 2001 Census, Output Area Boundaries.
Crown Copyright 2008. Crown Copyright material
is reproduced with the permission of the Controller of HMSO.
Leicestershire County Council
LA100019271, Published 2007.

Further Information

Blaby District Council

www.blaby.gov.uk/

Leicestershire County Council

www.leics.gov.uk

Leicestershire County Council Research & Information Team

www.leics.gov.uk/statistics

Leicestershire Online Research Atlas (LSORA)

www.lsora.org

Leicestershire Together

www.leicestershiretogether.org

Rural Community Council

www.ruralcc.org.uk

Leicestershire Economic Partnership

www.lsep.co.uk

Leicester Shire Intelligence

www.lsint.info/area_info2.asp

Association of Parish and Local Councils

www.lraplc.org.uk

Leicestershire Villages

www.leicestershirevillages.com

Leicestershire Rural Partnership

www.oakleaves.org.uk

Office of National Statistics

www.statistics.gov.uk

Contact us for:

Information in this publication can be made available in large print, Braille or in tape format. Telephone 0116 305 6977 for further details.

If you would like any of this information in another language please ask and English-speaking person to telephone 0116 305 6977 for more details.



Policy, Research & information Group
Chief Executive's Department
Leicestershire County Council
County Hall
Glenfield
Leicestershire
LE3 8RA

www.leics.gov.uk