

Indices of Deprivation 2007 - Headline Results

Produced by the Research and Information Team, Chief Executive's Department, Leicestershire County Council

The English Indices of Deprivation 2007 – Headline Results

Introduction

On 6th December 2007, the Communities and Local Government (CLG) published the new English Indices of Deprivation 2007 (ID 2007). This report is divided into two parts. The first deals with interpretation of the index at county, unitary and local authority district level, and the second analyses the index at the local area (lower super output area) level.

Background

The Indices of Deprivation 2004 and 2007 are an attempt to measure deprivation in a consistent way for small areas across England. The index is a relative measure of deprivation.

The new Index of Deprivation 2007 (ID 2007) is based on a variety of indicators which have been combined into seven domains:

- Income
- Employment
- Health Deprivation and Disability
- Education, Skills and Training
- Barriers to Housing and Services
- Crime
- Living Environment

These seven domain indices have been further combined to form the overall Index of Multiple Deprivation 2007 (IMD 2007).

There have been no fundamental changes to the methodology for calculating the index since the ID 2004 and therefore it allows some measure of change over time.

The ID 2007 has been calculated on the basis of **Lower Super Output Areas** (LSOAs), the same as for the IMD 2004. SOAs are collections of Census Output Areas, and are much smaller than wards. Lower level SOAs (LSOAs) contain between 1,000 and 3,000 people. There are 396 LSOAs covering Leicestershire.

The ID 2007 has been aggregated up to local authority level in a similar manner to the ID 2004. There are six measures at local authority district level:

- **Average Score:** the average of the deprivation scores for all the LSOAs in the authority
- **Average Rank:** the average of the ranks of all the LSOAs on the deprivation score
- **Extent:** the proportion of the population which live in LSOAs that are the most deprived
- **Local Concentration:** the average of the ranks of the most deprived LSOAs in the authority which account for 10% of the population
- **Income Scale:** the number of people who are income deprived
- **Employment Scale:** the number of people who are employment deprived

Each geographic area is given a rank for each measure 1 is the highest – i.e. most deprived.

- There are 149 Unitary and County Authorities in England.
- There are 354 Local Authority Districts in England.
- There are 32,482 Lower Super Output Areas in England.

How to read the tables in this report

If an area in 2007 has moved down the ranking since 2004, then it suggests that the area has improved (▼). Conversely, if an area in 2007 has moved up the ranking since 2004, then it suggests that the area has declined (▲).

Analysis at County/ Unitary Authorities Areas in East Midlands

Leicestershire County is now ranked 138th deprived area in England (1 being the most deprived and 149 least deprived). The new ranking for the County in 2007, suggest that Leicestershire is slightly less deprived than in 2004 (ranked 136th) when compared nationally (see Table 1).

With the exception of Leicester City (up by 10 places) and Derby (up by 1 place), all other county and unitary authorities in the region show an improvement in their ranking across England. However, there was no change in the ranking for Rutland which remains at 148th.

Table 1: Change in Rank of County / Unitary Authorities in the East Midlands - ID 2004 and ID 2007
Ranked by ID2007

COUNTY NAME	County : IMD2007 : Average Score	County : IMD2007 : Rank of Average Score	Change	<u>Change in Rank 2004 and 2007</u>	
				Improved ▼	Declined ▲
Nottingham	37.46	12	5	▼	
Leicester	34.68	19	-10	▲	
Derby	26.64	54	-1	▲	
Nottinghamshire	19.52	92	6	▼	
Derbyshire	18.74	95	4	▼	
Lincolnshire	18.08	98	4	▼	
Northamptonshire	16.05	111	4	▼	
Leicestershire	10.79	138	2	▼	
Rutland	7.49	148	0	=	

Rank is out of 149 county and unitary authorities in England.

Analysis at Local Authority Districts in Leicestershire

Within Leicestershire, North West Leicestershire ranked 219th nationally, remains the most deprived district in the county. However it had the largest improvement in the County in the ranking, moving down 23 places. Oadby and Wigston, up by 7 places and ranked 293rd nationally, this suggests that it is now slightly more deprived than three years ago when it was ranked 300th (see Table 2). There is no change in the ranking for Melton which remained at 294.

Table 2: Change in Rank of LADs in Leicestershire - ID 2004 and ID 2007

Ranked by ID2007

LA NAME	Local Authority : IMD2007 : Average Score	Local Authority : IMD2007 : Rank of Average Score	Change	<u>Change in Rank 2004 and 2007</u>		
				Improved ▼	Declined ▲	No change =
North West Leicestershire	14.73	219	23	▼		
Charnwood	11.95	264	7	▼		
Hinckley and Bosworth	10.90	283	5	▼		
Oadby and Wigston	10.51	293	-7	▲		
Melton	10.43	294	0	=		
Blaby	8.41	326	8	▼		
Harborough	7.08	344	8	▼		

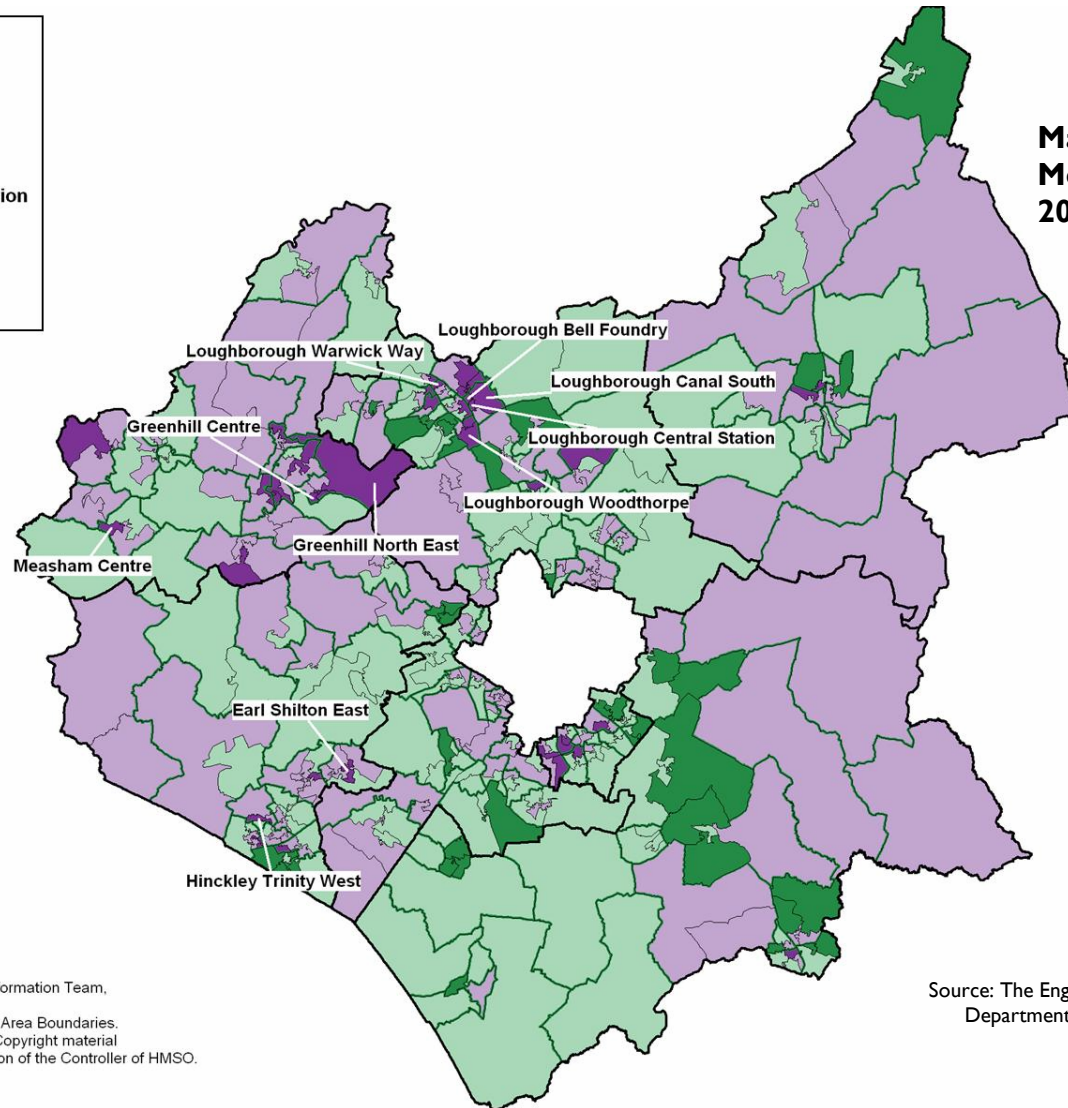
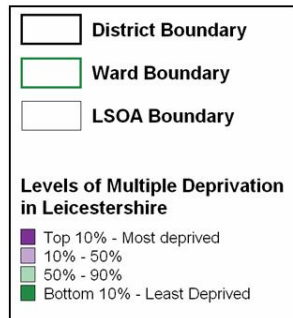
Rank is out of 354 local authorities in England.

The new deprivation map of Leicestershire

The English Indices of Deprivation 2007 - Headline Analysis

The ID 2007 has been calculated on the basis of lower level Super Output Areas (LSOAs). LSOAs contain between 1,000 and 3,000 people. There are 396 LSOAs covering Leicestershire, and 32,482 across England.

Map I below, shows the Index Multiple Deprivation 2007 (IMD2007) for all LSOAs in Leicestershire. Those shaded dark purple are in the top 10% most deprived areas in the County.



Map I: Index of Multiple Deprivation: Most Deprived Areas in Leicestershire 2007

Produced by the Research & Information Team, Leicestershire County Council.
 © Source 2001 Census, Output Area Boundaries. Crown Copyright 2007. Crown Copyright material is reproduced with the permission of the Controller of HMSO. Leicestershire County Council. LA100019271. Published 2007.

Source: The English Indices of Deprivation 2004 & 2007
 Department for Communities & Local Government

Index of Multiple Deprivation 2007 – Combined Index

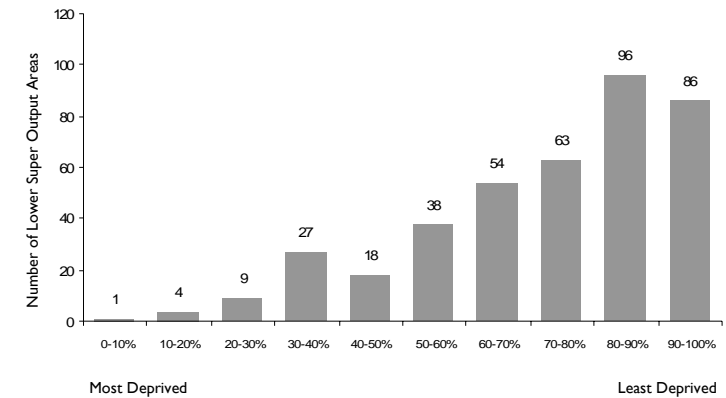
According to the Index of Multiple Deprivation 2007 (IMD2007), most of the deprived areas in Leicestershire are north-west of the county. The Lower Super Output Area (LSOA), Loughborough Foundry Bell in Charnwood (ranked 2,119th nationally and the most deprived area in Leicestershire) is within the 10% most deprived areas in England (Table 3 and Map 2). A further four LSOAs are ranked that are within 20% most deprived LSOAs in England (Chart 1). In 2004, there were no areas in Leicestershire within the 10% most deprived areas in England.

Table 3 : Ten most deprived LSOAs in Leicestershire

LA NAME	LSOA Name	LSOA Index of Multiple Deprivation 2007 : SCORE	LSOA Index of Multiple Deprivation 2007 : RANK OF SCORE (Where 1 is most deprived)	Change in Rank 2004 and 2007	
				Improved ▼	Declined ▲
Charnwood	Loughborough Bell Foundry	50.98	2119	-1225	▲
North West Leicestershire	Greenhill North East	43.87	3625	31	▼
Charnwood	Loughborough Warwick Way	43.32	3769	-1287	▲
North West Leicestershire	Greenhill Centre	41.81	4183	146	▼
Charnwood	Loughborough Canal South	37.34	5450	-1952	▲
Charnwood	Loughborough Central Station	33.61	6758	-2316	▲
Charnwood	Loughborough Woodthorpe	33.61	6761	1529	▼
North West Leicestershire	Measham Centre	32.82	7051	-960	▲
Hinckley and Bosworth	Hinckley Trinity West	32.03	7368	-2371	▲
Hinckley and Bosworth	Earl Shilton East	29.37	8464	234	▼

Rank is out of 32,482 Lower Super Output Areas (LSOAs) in England.

Chart 1: Index of Multiple Deprivation - Number of LSOAs ranked in each Percentage Band



Map 2: The most deprived Lower Super Output Area in Leicestershire in 2007 - Loughborough Bell Foundry



Income Domain Index

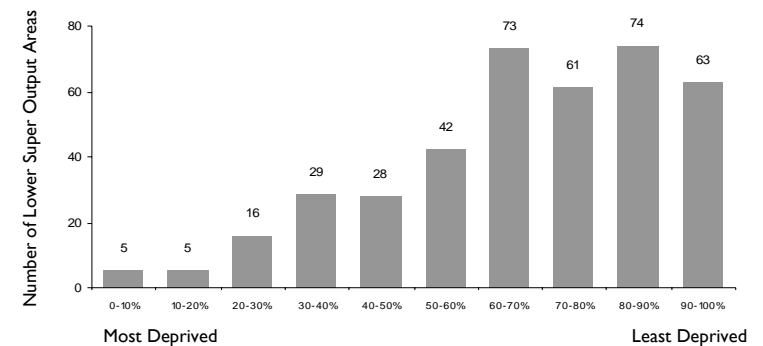
The ten most Income deprived LSOAs in the County all fall within the 20% most deprived LSOAs in England (Table 4 and Chart 2). Loughborough Bell Foundry LSOA is the most deprived area in Leicestershire. However Loughborough Midland Station LSOA ranked 5,197th (up by 3,201 places) saw the largest change in three years (Map 3). Conversely, both Loughborough Woodthorpe LSOA (down by 951 places) and Greenhill North East LSOA (down by 866 places) in North West Leicestershire saw an improvement in their ranking.

Table 4: Ten most deprived LSOAs in Leicestershire

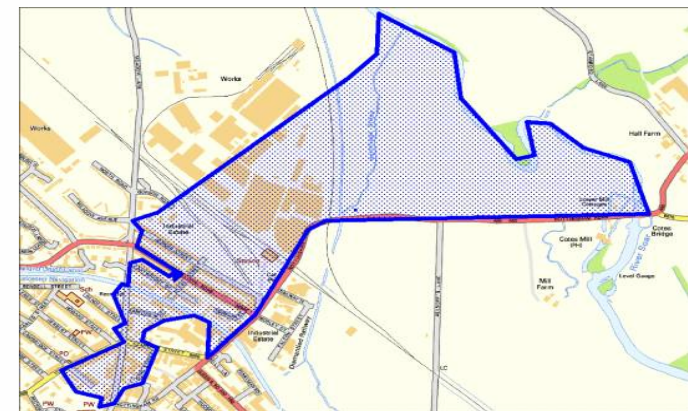
Income Deprivation		Change in Rank 2004 and 2007			
Ranked by ID2007		Improved ▼			
		Declined ▲			
		No change =			
LA NAME	LSOA Name	LSOA : ID2007 : Income. SCORE	LSOA : ID2007 : Income. RANK OF SCORE (where 1 is most deprived)	Change	
Charnwood	Loughborough Bell Foundry	0.38	2153	-1481	▲
North West Leicestershire	Greenhill Centre	0.36	2670	-1435	▲
Charnwood	Loughborough Canal South	0.36	2702	-1442	▲
Charnwood	Loughborough Warwick Way	0.34	3219	-935	▲
Charnwood	Loughborough Woodthorpe	0.34	3231	951	▼
North West Leicestershire	Greenhill North East	0.33	3499	866	▼
Charnwood	Loughborough Central Station	0.32	3703	-2316	▲
Charnwood	Loughborough Midland Station	0.28	5197	-3201	▲
Hinckley and Bosworth	Hinckley Westfield Junior School	0.25	6255	-476	▲
North West Leicestershire	Measham Centre	0.25	6373	-1956	▲

Rank is out of 32,482 Lower Super Output Areas (LSOAs) in England.

Chart 2: Income Domain Index - Number of LSOAs ranked in each Percentage Band



Map 3: The largest negative change in Income Deprivation since 2004 in Leicestershire in 2007 - Loughborough Midland Station LSOA



1:50K, 1:10K

Employment Domain Index

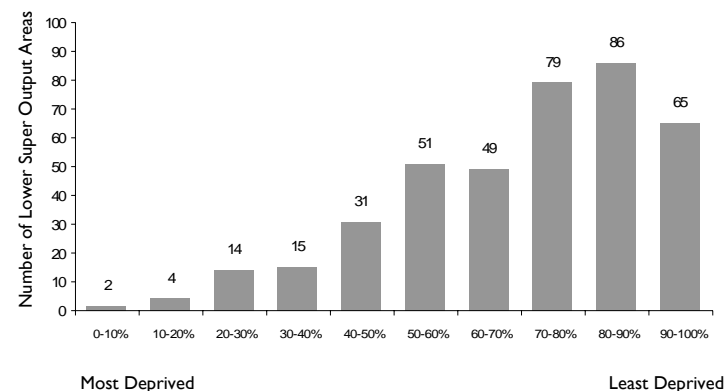
The top six most Employment deprived LSOAs in Leicestershire fall within 20% most deprived LSOAs nationally (Table 5). Two of the six areas are within 10% most deprived LSOAs in England (Chart 3). Hinckley Trinity West in Hinckley & Bosworth ranked 4,595th nationally is up by 2,758 places on 2004 ranking (Map 4). Only Loughborough Dishley East (Charnwood) ranked 7,039 (down by 621 places) has improved its position between 2004 and 2007.

Table 5 : Ten most deprived LSOAs in Leicestershire

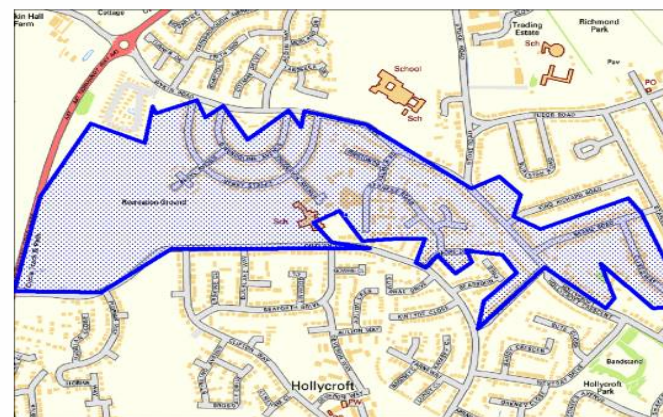
Employment		Change in Rank 2004 and 2007			
Ranked by ID2007		Improved ▼ Declined ▲ No change =			
LA NAME	LSOA Name	LSOA : IMD2007 : Employment SCORE	LSOA : IMD2007 : Employment RANK OF SCORE (where 1 is most deprived)	Change	
Charnwood	Loughborough Bell Foundry	0.26	1013	-177	▲
North West Leicestershire	Greenhill North East	0.21	2257	-278	▲
Charnwood	Loughborough Warwick Way	0.18	4130	-232	▲
North West Leicestershire	Greenhill Centre	0.18	4356	-392	▲
Hinckley and Bosworth	Hinckley Trinity West	0.17	4595	-2758	▲
Hinckley and Bosworth	Hinckley Westfield Junior School	0.16	5297	-2004	▲
North West Leicestershire	Measham Centre	0.15	6643	-758	▲
Charnwood	Loughborough Dishley East	0.14	7039	621	▼
Oadby and Wigston	Oadby Industrial Estate	0.14	7133	-1800	▲
Charnwood	Loughborough Canal South	0.14	7150	-1995	▲

Rank is out of 32,482 Lower Super Output Areas (LSOAs) in England.

Chart 3: Employment Domain Index - Number of LSOAs ranked in each Percentage Band



Map 4: The largest negative change in Employment Deprivation since 2004 in Leicestershire in 2007 - Hinckley Trinity West LSOA



1:50K, 1:10K

Health Deprivation and Disability Domain Index

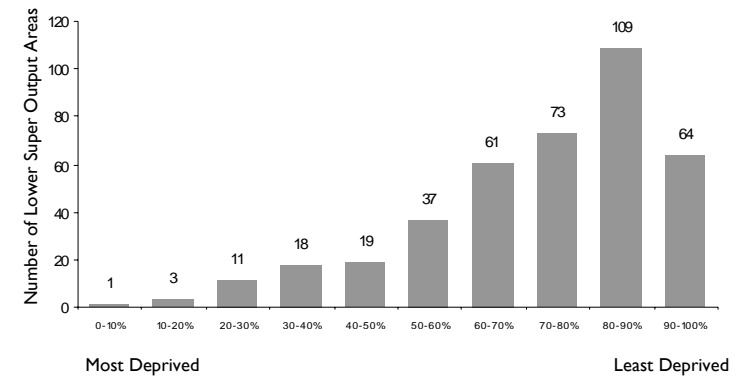
Loughborough Foundry Bell SOA (ranked 1,003rd) is significantly more deprived in terms of Health and Disability than the next LSOA in the County (Table 6). The area is also within the 10% most deprived LSOAs in England. A further three LSOAs are within the 20% most deprived area nationally (Chart 4). However Loughborough Central Station (ranked 8,393rd nationally and 9th locally) is up by 6,790 places since 2004 (Map 5). Of the ten most deprived areas in Leicestershire, only Loughborough Centre South (ranked 5th most deprived area in the County) has improved its ranking by 666 places.

Table 6 : Ten most deprived LSOAs in Leicestershire

Health and Disability		Change in Rank 2004 and 2007			
Ranked by ID2007		Improved ▼			
		Declined ▲			
		No change =			
LA NAME	LSOA Name	LSOA : IMD2007 : Health Dep and Disability SCORE	LSOA : IMD2007 : Health Dep and Disability RANK OF SCORE (where 1 is most deprived)	Change	
Charnwood	Loughborough Bell Foundry	1.69	1003	-1796	▲
North West Leicestershire	Greenhill North East	0.84	5768	-54	▲
Charnwood	Loughborough Warwick Way	0.81	6065	-2268	▲
North West Leicestershire	Greenhill Centre	0.80	6207	-84	▲
Charnwood	Loughborough Centre South	0.68	7459	666	▼
Hinckley and Bosworth	Hinckley Westfield Junior School	0.66	7706	-2047	▲
North West Leicestershire	Norris Hill, Ashby Woulds & Albert Village	0.61	8136	-2232	▲
Hinckley and Bosworth	Hinckley Trinity West	0.61	8197	-4098	▲
Charnwood	Loughborough Central Station	0.59	8393	-6790	▲
Charnwood	Loughborough Canal South	0.59	8432	-2674	▲

Rank is out of 32,482 Lower Super Output Areas (LSOAs) in England.

Chart 4: Health & Disability Domain Index - Number of LSOAs ranked in each Percentage Band



Map 5: The largest negative change in Health and Disability Deprivation since 2004 in Leicestershire in 2007 - Loughborough Central Station LSOA



1:50K, 1:10K

Education, Skills and Training Domain Index

Seven out of the ten most deprived areas in the County in terms of Education, Skills and Training are within the 10% most deprived areas in England and the remaining three are within 20% most deprived areas nationally (Table 7 and Chart 5). However, there has been improvements in four LSOAs, namely, Greenhill Centre (ranked 441st nationally and 1st locally) is down by 178 places (Map 6). Loughborough Woodthorpe (ranked 1,112th nationally and 3rd locally) is down by 309 places, Earl Shilton East in Hinckley & Bosworth (ranked 2,961st nationally and 7th locally) is down by 569 places and Loughborough Shelthorpe North (ranked 3,902nd nationally and 10th locally) is down by 97 places.

Table 7 : Ten most deprived LSOAs in Leicestershire

Education, Skills and Training

Change in Rank 2004 and 2007

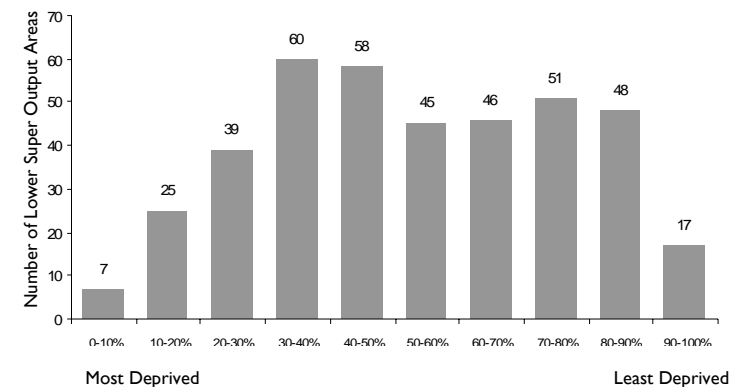
Ranked by ID2007

Improved ▼
Declined ▲
No change =

LA NAME	LSOA Name	LSOA : IMD2007 : Education Skills and Training SCORE	LSOA : IMD2007 : Education Skills and Training RANK OF SCORE (where 1 is most deprived)	Change	
North West Leicestershire	Greenhill Centre	78.40	441	178	▼
Charnwood	Loughborough Warwick Way	69.16	986	-507	▲
Charnwood	Loughborough Woodthorpe	67.34	1112	309	▼
North West Leicestershire	Measham Centre	62.06	1600	-694	▲
Hinckley and Bosworth	Hinckley Trinity West	54.70	2493	-857	▲
Melton	Melton Egerton North West	53.02	2728	-1135	▲
Hinckley and Bosworth	Earl Shilton East	51.41	2961	569	▼
North West Leicestershire	Greenhill North East	47.97	3562	-1110	▲
Oadby and Wigston	Wigston Rolleston Road	46.94	3744	-731	▲
Charnwood	Loughborough Shelthorpe North	46.12	3902	97	▼

Rank is out of 32,482 Lower Super Output Areas (LSOAs) in England.

Chart 5: Education, Skills & Training Domain Index - Number of LSOAs ranked in each Percentage Band



Map 6: The most Education, Skills & Training deprived area in Leicestershire in 2007 - Greenhill Centre LSOA



1:50K, 1:10K

Barriers to Housing and Services Domain Index

In the Barriers to Housing and Services domain and within the ten most deprived areas, seven LSOAs moved up the ranking and three down (Table 8). There are fourteen LSOAs in the County that are within the 10% most deprived areas in England (Chart 6). The most deprived LSOA in the county is Twycross and Sheepy (down by 367) which is ranked 560 nationally (Map 7). The largest change was in the Gaddesby, Great Dalby & Burton Lazars LSOA ranked 1,436 nationally but had moved up by 1,606 places.

Table 8 : Ten most deprived LSOAs in Leicestershire

Barriers to Housing & Services

Ranked by ID2007

Change in Rank 2004 and 2007

Improved ▼

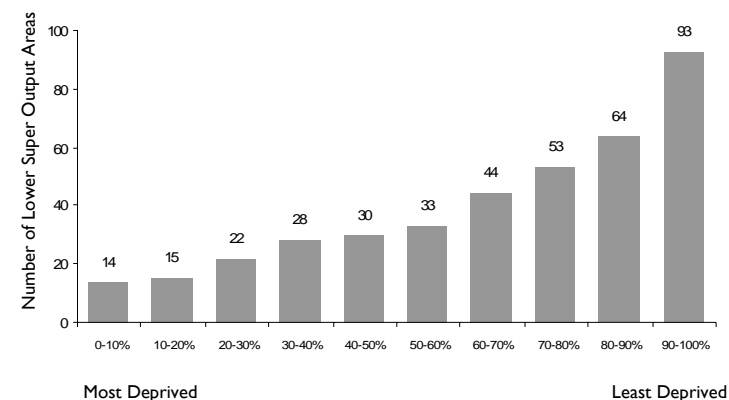
Declined ▲

No change =

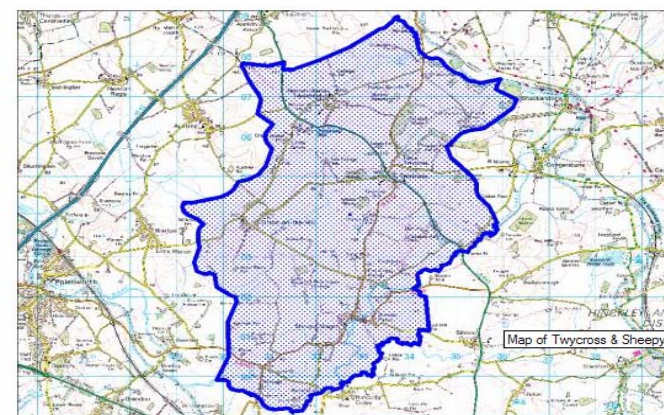
LA NAME	LSOA Name	LSOA : IMD2007 : Barriers to Housing & Services SCORE	LSOA : IMD2007 : Barriers to Housing & Services RANK OF SCORE (where 1 is most deprived)	Change
Hinckley and Bosworth	Twycross & Sheepy	48.94	560	-367 ▲
Harborough	Tilton, Hungarton & Tugby	47.90	679	285 ▼
Melton	Somerby, Twyford & Knossington	46.19	896	-796 ▲
Melton	Croton Kerrial, Eaton and Belvoir	44.22	1258	-781 ▲
Melton	Greater Wymondham	43.87	1327	-147 ▲
Melton	Gaddesby, Great Dalby & Burton Lazars	43.29	1436	-1606 ▲
Harborough	Greater Billesdon	42.01	1738	407 ▼
Harborough	The Langtons	41.66	1818	493 ▼
Melton	Greater Frisby-on-the-Wreake	41.07	1972	-902 ▲
Harborough	Foxton, Saddington & Theddingworth	40.58	2124	701 ▼

Rank is out of 32,482 Lower Super Output Areas (LSOAs) in England.

Chart 6: Barriers to Housing & Services Domain Index - Number of LSOAs ranked in each Percentage Band



Map 7: The most Barriers to Housing and Services deprived area in Leicestershire in 2007 - Twycross and Sheepy LSOA



Crime Domain Index

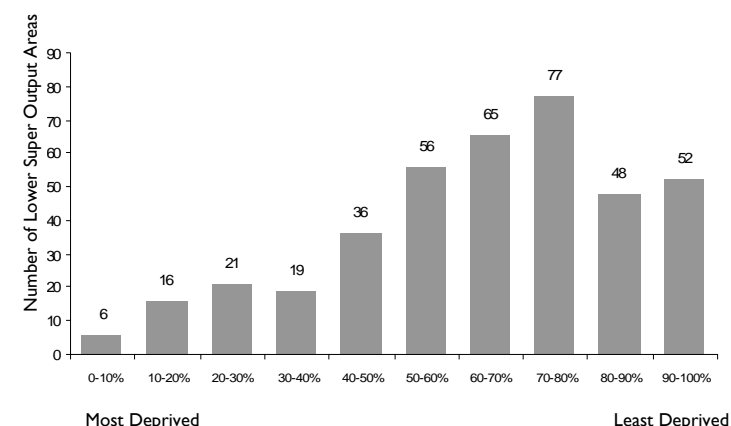
In the Crime domain, the ten most deprived LSOAs in Leicestershire all fall within the 20% of most deprived areas in England (Chart 7). Between 2004 and 2007 the nine LSOAs moved up the ranking and one moved down (Table 9). Loughborough Shelthorpe North LSOA (up by 8,609 places) had the largest negative movement in the ranking (Map 8). Conversely, in Coalville Centre LSOA ranked 2,230 where crime deprivation fell (down by 580 places), remains the fourth most deprived area under this domain.

Table 9 : Ten most deprived LSOAs in Leicestershire

Crime	Change in Rank 2004 and 2007				
	Ranked by ID2007	Improved ▼	Declined ▲	No change =	
LA NAME	LSOA Name	LSOA : IMD2007 : Crime SCORE	LSOA : IMD2007 : Crime RANK OF SCORE (where 1 is most deprived)	Change	
Charnwood	Loughborough Bell Foundry	1.63	771	-2223	▲
Charnwood	Loughborough Centre West	1.59	865	-772	▲
Charnwood	Loughborough Centre South	1.51	1072	-2336	▲
North West Leicestershire	Coalville Centre	1.24	2230	580	▼
Charnwood	Loughborough Canal South	1.21	2420	-6383	▲
Charnwood	Loughborough Central Station	1.21	2445	-5300	▲
Charnwood	Loughborough Shelthorpe North	1.06	3431	-8609	▲
Charnwood	Loughborough Warwick Way	1.04	3561	-6801	▲
Charnwood	Loughborough Toothill Road	1.00	3858	-3405	▲
Melton	Melton Egerton East	1.00	3862	-70	▲

Rank is out of 32,482 Lower Super Output Areas (LSOAs) in England.

Chart 7: Crime Domain Index - Number of LSOAs ranked in each Percentage Band



Map 8: The largest negative change in Crime Deprivation since 2004 in Leicestershire in 2007 - Loughborough Shelthorpe North LSOA



1:50K, 1:10K

Living Environment Domain Index

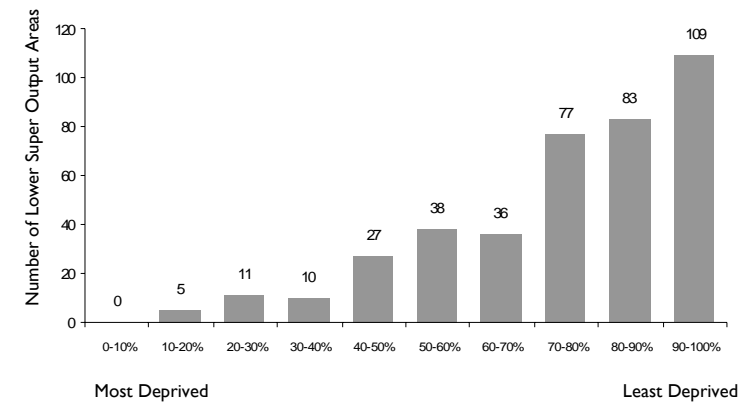
Ranked nationally at 4,042nd, Loughborough Central Station in Charnwood is the most deprived area in the County in terms of Living Environment. However, the ranking is down by 991 places since 2004. The top five LSOAs in Leicestershire are within the 20% of most deprived areas in England (Chart 8). Croxton Kerrial, Eaton and Belvoir in Melton (ranked 5,425th nationally and 2nd locally) is up by 3,765 places (Table 10 and Map 9). However, Hinckley Town Centre in Hinckley & Bosworth (ranked 8,364th nationally and 9th locally) is down by 5,000 places since 2004.

Table 10 : Ten most deprived LSOAs in Leicestershire

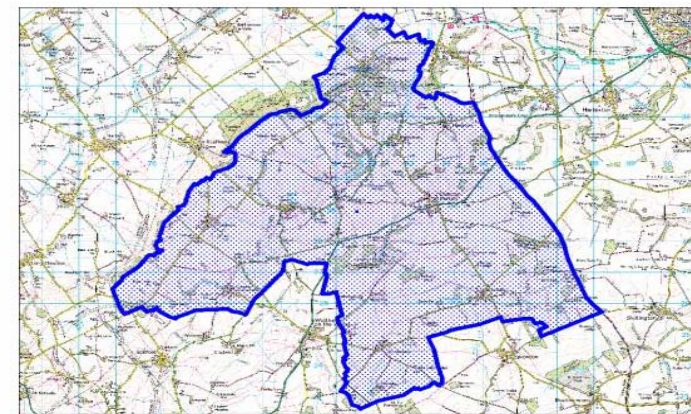
Living Environment		Change in Rank 2004 and 2007			
Ranked by ID2007		Improved ▼			
		Declined ▲			
		No change =			
LA NAME	LSOA Name	LSOA : IMD2007 : Living Environment SCORE	LSOA : IMD2007 : Living Environment RANK OF SCORE (where 1 is most deprived)	Change	
Charnwood	Loughborough Midland Station	43.69	4042	991	▼
Melton	Croxton Kerrial, Eaton and Belvoir	38.93	5425	-3765	▲
Oadby and Wigston	South Wigston Countesthorpe Road	38.89	5441	-55	▲
Melton	Greater Wymondham	38.61	5529	-3461	▲
Melton	Asfordby East	36.02	6395	-2458	▲
Oadby and Wigston	South Wigston Blaby Road & Saffron Road	35.48	6556	2962	▼
Melton	Melton Craven West	33.35	7316	-1555	▲
Charnwood	Loughborough Toothill Road	32.49	7639	4257	▼
Hinckley and Bosworth	Hinckley Town Centre	30.56	8364	5003	▼
Charnwood	Loughborough Centre West	30.06	8568	4557	▼

Rank is out of 32,482 Lower Super Output Areas (LSOAs) in England.

Chart 8: Living Environment Domain Index - Number of LSOAs ranked in each Percentage Band



Map 9: The largest negative change in Living Environment Deprivation since 2004 in Leicestershire in 2007 - Croxton Kerrial, Eaton and Belvoir SOA



1:50K, 1:10K

References:

The English Indices of Deprivation 2007 - Published by the Department for Communities and Local Government (CLG).

<http://www.communities.gov.uk/publications/communities/indicesdeprivation07>

The English Indices of Deprivation 2004 - Published by the then Office of the Deputy Prime Minister (ODPM).

Leicestershire Statistics and Research Online - www.lsr-online.org