

Office of the Deputy Prime Minister
Indices of Deprivation 2004
Key Findings in Blaby

January 2005



Report Produced by Research & Information Team
Chief Executives Department
Leicestershire County Council



CONTENTS

Contents

	Page
Introduction	2
District Summary	3
Geography	4
Local Data	6
Index of Multiple Deprivation	8
Income Deprivation	10
Income Deprivation Affecting Children	12
Income Deprivation Affecting Older People	14
Employment Deprivation	16
Health Deprivation and Disability	18
Education, Skills and Training Deprivation	20
Barriers to Housing and Services	22
Living Environment	24
Crime Deprivation	26
Appendix 1	28

INTRODUCTION

Introduction

The Indices of Deprivation 2004 are produced by the Office of the Deputy Prime Minister (ODPM). They are an attempt to measure deprivation in a consistent way for small areas across England. They were first developed in the mid 1990's using data from the 1991 Census. Since then the Indices have been revised several times using updated data and new indicators to reflect change. They have been widely used to target regeneration resources through the regional allocation of the SRB Challenge Fund.

In recent years with the release of the Indices of Deprivation (ID2000) in July 2000, use of the Indices has become more widespread. Both central and local government places a lot of value on the Indices and the Audit Commission uses it as one measure for the Quality of Life Indicators.

Indices of Deprivation 2004

The Indices of Deprivation 2004 (ID2004) were released in May 2004. The ID2004 are based on the approach, structure and methodology that was used to create the previous Indices of Deprivation 2000. The ID2004 updates the ID2000 in two key ways:

- more up-to-date data has been used (mostly 2001 data), and
- new measures have been incorporated as new and improved data sources have become available.

These changes however mean that the two indices cannot be directly compared. In addition many ward boundaries have changed since the release of the 2000 data meaning that straightforward comparisons cannot be made. Therefore change over time cannot be identified.

This Report

This report presents the results of the Indices of Deprivation 2004 in Blaby district.

It considers the summary measures used to score and rank the district in relation to other Local Authority Districts in England.

It also includes details of different aspects of deprivation affecting smaller areas within the district. A series of maps are included and illustrate where the relatively higher levels of deprivation are located.

Leicestershire County Report

A report considering the Indices of Deprivation 2004 in more detail across all districts in Leicestershire has also been produced. It is available to download at www.leics.gov.uk/statistics, or by using the contact details below.

Further Information

Further information is available from www.odpm.gov.uk

If you require further guidance, please contact:

Sarah Geddes
Research & Information Team
Chief Executives Department
Leicestershire County Council

E: sgeddes@leics.gov.uk

T: 0116 265 8262

SUMMARY

Blaby District Summary

ODPM uses six summary measures to rank district authorities in England. The most commonly used measure is the Rank of Average Rank which measures the average levels of deprivation across the district. This shows that Blaby district is ranked 316th out of the 354 district authorities in England, where 1=most deprived and 354=least deprived. Blaby district is the second lowest ranked district in Leicestershire, with only Harborough district considered to be less deprived.

Table 1: Comparison with other districts in Leicestershire

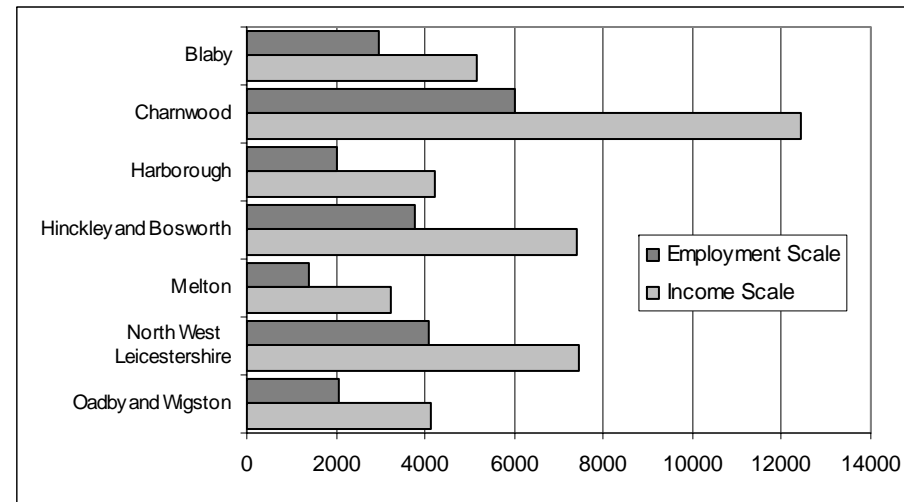
District	Rank of average rank
North West Leicestershire	195
Charnwood	262
Hinckley and Bosworth	275
Melton	293
Oadby and Wigston	304
Blaby	316
Harborough	336

Other measures which are used to rank district authorities include the Rank of Local Concentration. This measures the severity of multiple deprivation in each authority, measuring 'hot spots' of deprivation. Blaby is ranked 341st in England showing that the district experiences relatively low levels of deprivation.

The districts are also ranked on an Income and Employment Scale. This measures the number of people who are considered to be either income or employment deprived in each district.

The graph below shows that 5,162 people are income deprived and 2,979 people are employment deprived in Blaby.

Graph 1: Number of people who are income or employment deprived by district



The examination of Super Output Area data in each domain highlights the locations where deprivation is concentrated in the district.

GEOGRAPHY

Indices of Deprivation: Geography

For the first time, the Indices of Deprivation 2004 have been released at Super Output Area (SOA) lower level – where previous Indices were released at ward level.

Super Output Areas are a new national geography created by the Office for National Statistics. They are created by combining a number of Output Areas which were created for the 2001 Census.

Super Output Areas are small areas of broadly consistent population size across the country, each containing approximately 1,500 people.

The use of Super Output Areas (lower level) as a basis for the Indices enables smaller, sub-ward areas of deprivation to be identified. Such areas may previously have been hidden / masked by the use of ward level data.

Blaby district contains 60 Super Output Areas.

Table 2: Number of SOAs by area

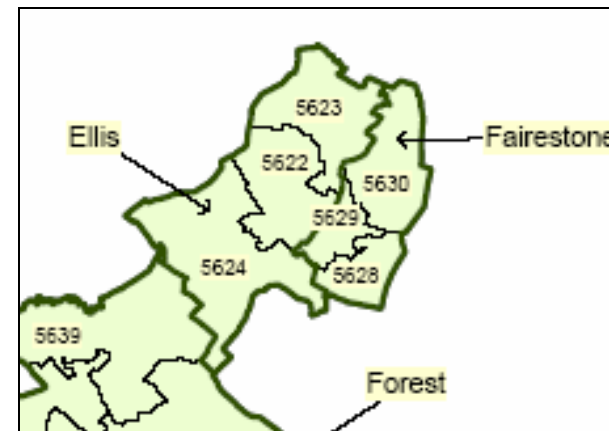
	Number of SOAs
England	32,482
Leicestershire	396
Blaby District	60

In all cases, a ranking of 1 signifies the most deprived area. In respect of the national ranking which is given in each of the following tables, a ranking between 1 and 3,248 denotes that the area is ranked within the 10% most deprived in England, and a ranking between 1 and 6,496 denotes that the area is ranked within the 20% most deprived in England.

Map 1 on page 5 shows the location of each of the Super Output Areas in Blaby district. Each Super Output Area is identified by a nine digit code, eg. E0102**5625**. For ease of use, Map 1 lists only the last four digits.

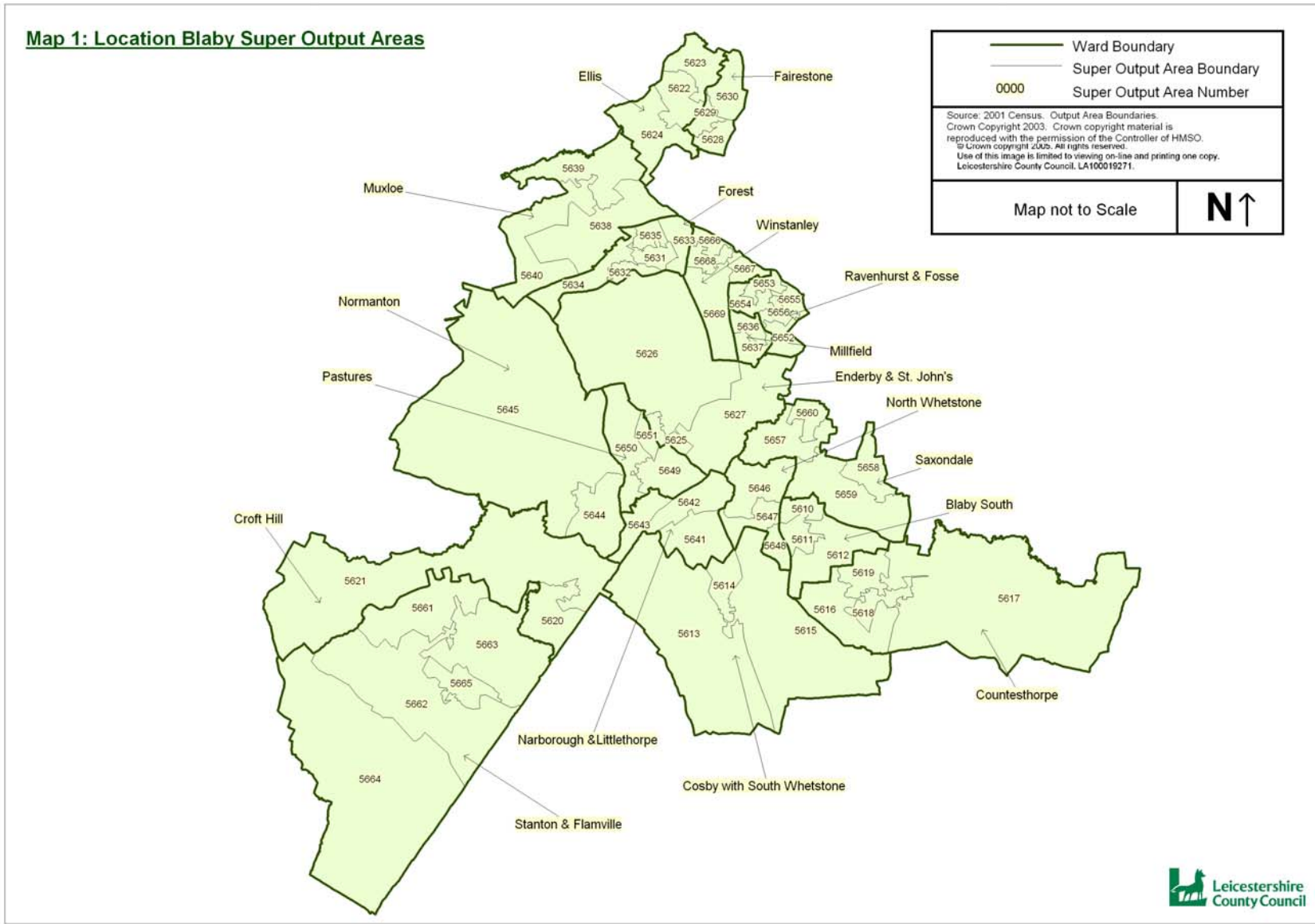
The picture below shows how a number of Super Output Areas (normally between two and five) are located within ward boundaries, so for example Fairstone ward contains three SOAs – 5628, 5629 and 5630.

Picture 1: Extract of Map 1 showing SOAs within ward boundaries



For information, this report also contains the ward in which each SOA is located. However, where a ward name is given, users should be aware that it relates only to part of the ward, and not necessarily the entire ward.

MAP 1: LOCATION OF SOAS



LOCAL DATA

LOCAL DATA

Local data

The Index of Multiple Deprivation 2004 (IMD2004) combines indicators across seven domains into a single deprivation score and rank for each Super Output Area. The domains are shown below:

- Income Deprivation
- Employment Deprivation
- Health Deprivation and Disability
- Education, Skills and Training Deprivation
- Barriers to Housing and Services
- Living Environment Deprivation
- Crime

There are also two supplementary domains which measure income deprivation affecting children (IDAC) and income deprivation affecting older people (IDAOP).

These domains are given the following weighting when calculating the overall Index of Multiple Deprivation:

	Weighting
Income Deprivation	22.5%
Employment Deprivation	22.5%
Health Deprivation and Disability	13.5%
Education, Skills and Training Deprivation	13.5%
Barriers to Housing and Services	9.3%
Living Environment Deprivation	9.3%
Crime	9.3%

The following sections consider the relative levels of deprivation experienced in each domain in Blaby district.

Information on the indicators used to compile each domain is listed along with a table showing the ten most deprived SOAs in the district in each domain.

For comparison, some tables also include the ranking in Leicestershire (where 1=most deprived, 396=least deprived) and in England (where 1=most deprived, 32,482=least deprived).

Each section also includes a graph which shows the number of Super Output Areas in each domain and how they are ranked within England. This gives a visual representation of the spread of relative deprivation in each domain in the district, showing how many areas are in the 10% most deprived and 10% least deprived in England.

This information is accompanied by Maps 2 to 11 which show the location of the most deprived areas in each domain in the district. The 10% most deprived and 10% least deprived areas in Blaby district are highlighted on the maps.

A comprehensive list of national ranks for each Super Output Area in each domain is included in appendix 1.



INDEX OF MULTIPLE DEPRIVATION

Indicators

The Index of Multiple Deprivation combines the indicators across the seven domains (listed below) into a single deprivation score and rank for each Super Output Area

- Income
- Employment
- Health & Disability
- Education & Skills
- Barriers to Housing & Services
- Living Environment
- Crime

Commentary

The Index of Multiple Deprivation considers all aspects of deprivation experienced by particular areas. Overall levels of deprivation are low in Blaby district with no area ranked within the 50% most deprived in England. The graph shows the spread of rankings for all the Super Output Areas in Blaby district – it clearly shows that the majority are ranked amongst the least deprived in England.

Part of Winstanley ward is considered to be the most deprived area in the district – shown on Map 2. However, it is ranked 16,362 most deprived in England and is ranked only 63rd most deprived in the County. The areas which are more deprived in relative terms, are primarily located in urban areas.

Graph 2: Spread of National Ranking of all SOAs in Blaby

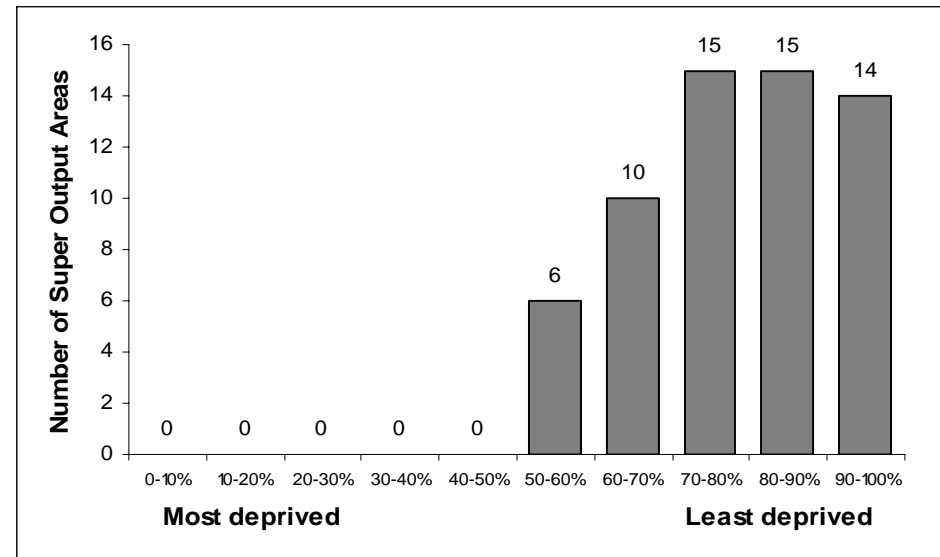
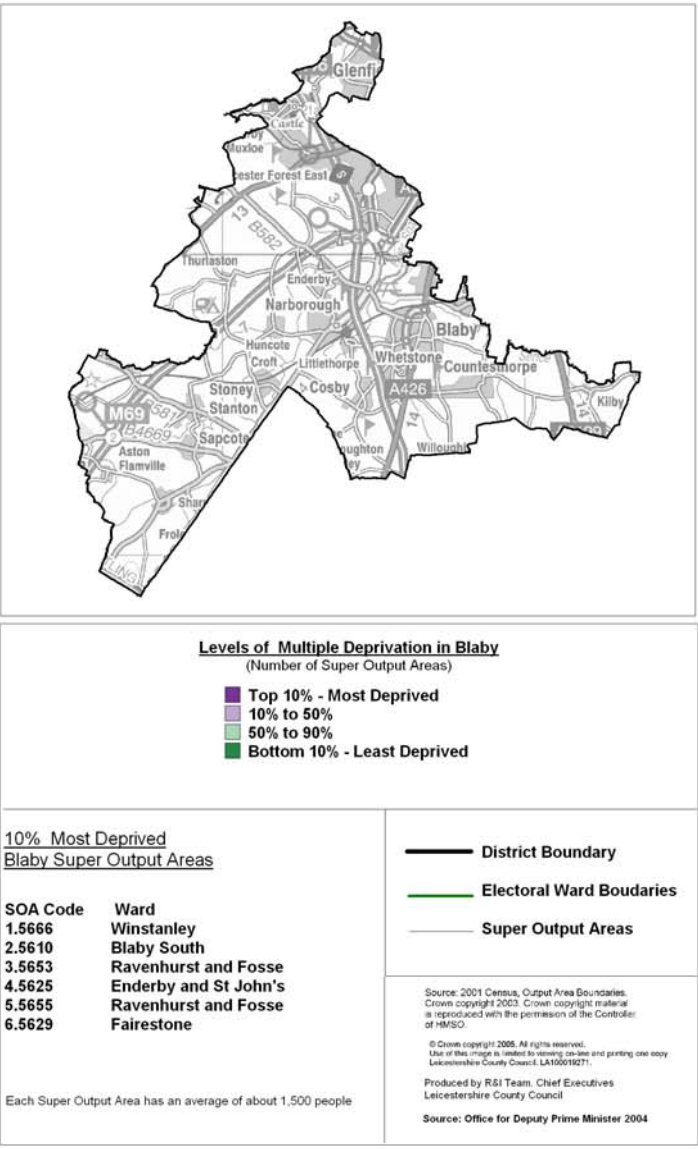
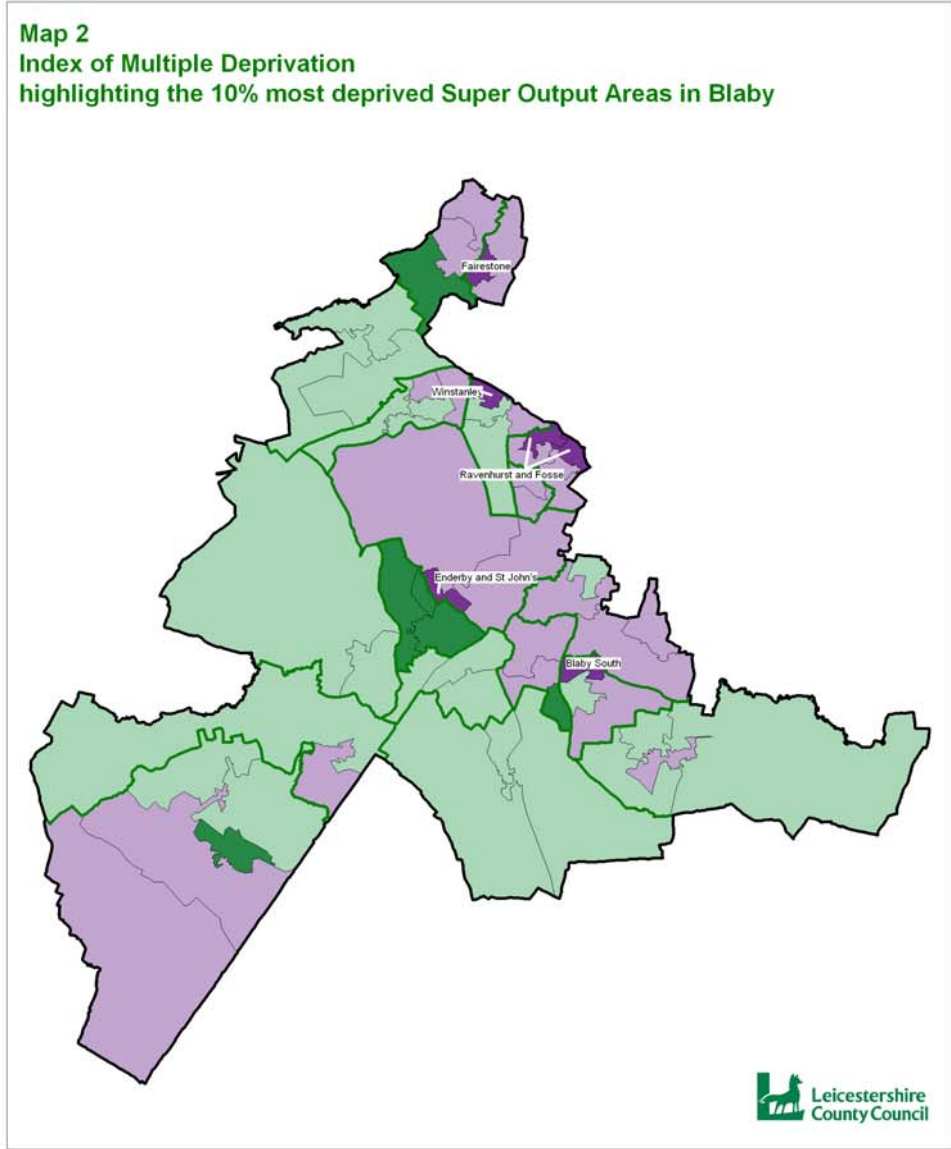


Table 3: Ten most deprived areas in Blaby

SOA	Ward	Score	District Rank	County Rank	National Rank
E01025666	Winstanley	16.88	1	63	16,362
E01025610	Blaby South	15.58	2	82	17,560
E01025653	Ravenhurst & Fosse	15.31	3	84	17,824
E01025625	Enderby & St John's	14.99	4	86	18,143
E01025655	Ravenhurst & Fosse	14.98	5	87	18,161
E01025629	Fairestone	14.06	6	101	19,094
E01025627	Enderby & St John's	13.58	7	107	19,635
E01025646	North Whetstone	13.54	8	108	19,676
E01025667	Winstanley	13.37	9	111	19,886
E01025657	Saxondale	13.10	10	117	20,200

MAP 2: INDEX OF MULTIPLE DEPRIVATION



INCOME DEPRIVATION

Indicators

The income deprivation domain measures the proportion of the population living below 60% of median income. A number of indicators are used to compile this domain. These include:

- Adults and children in Income Support households
- Adults and children in Income Based Job Seekers Allowance households
- Adults and children in Working Family Tax Credit households
- Adults and children in Disabled Persons Tax Credit households
- Supported asylum seekers in receipt of subsistence only and accommodation support

Commentary

The score gives the proportion of the population who are considered to be income deprived. In Blaby district there are **5,162 people** who are considered to be income deprived.

Table 4 lists the number of people in the most deprived SOAs who are income deprived. It shows that almost half of the people who are income deprived in Blaby district live in the ten most deprived SOAs.

However, it must be remembered that overall levels of deprivation are low, with the most deprived area (part of Enderby & St Johns ward) being ranked only 14,086 in England.

Map 3 shows the most deprived areas in the district. Perhaps most interesting, is that part of Enderby & St Johns ward which is ranked as the most deprived in the district is immediately adjacent to part of Pastures ward which is ranked as one of the least deprived areas in the district in this domain.

Graph 3: Spread of National Ranking of all SOAs in Blaby

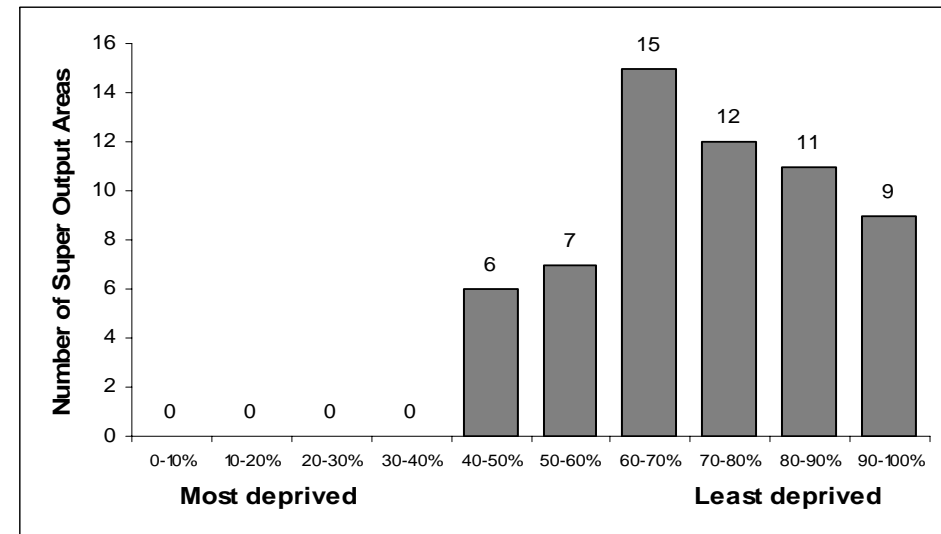
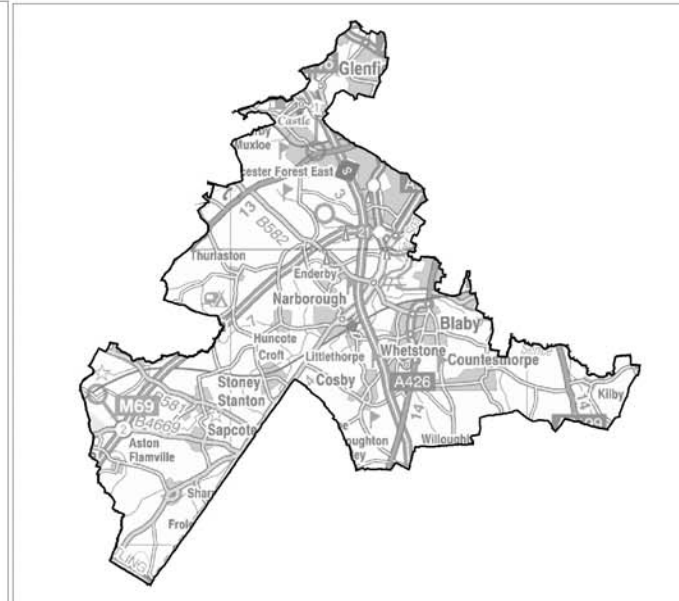
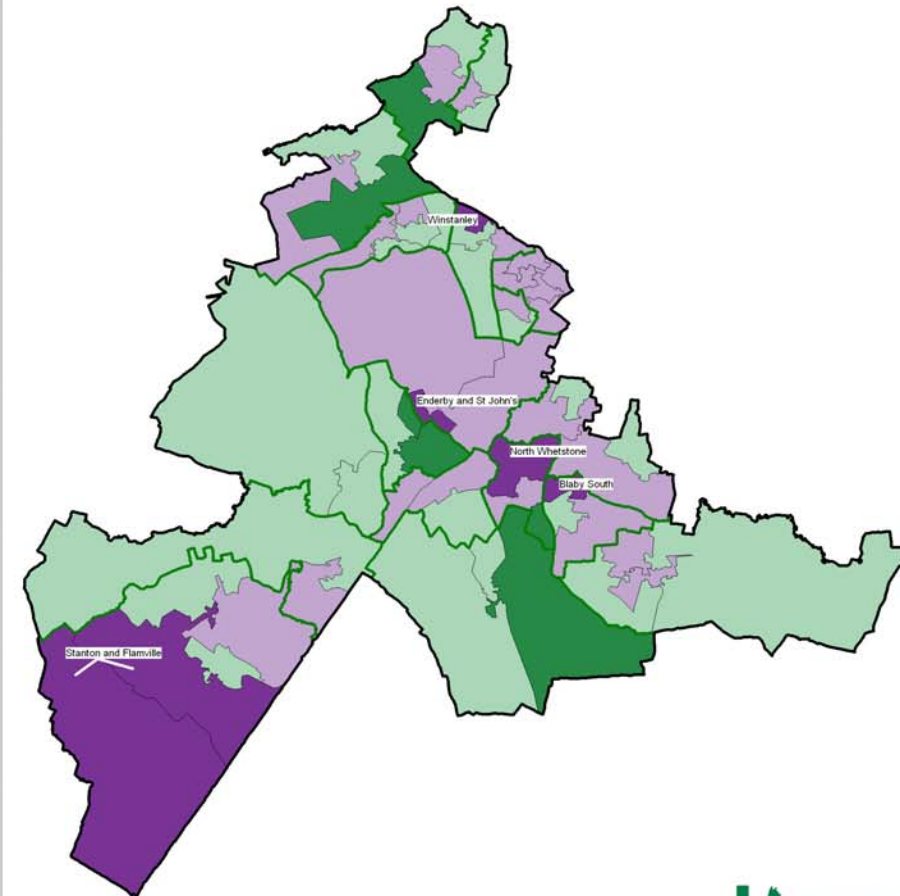


Table 4: Ten most deprived areas in Blaby

SOA	Ward	Score	Total pop	Number income deprived	National Rank
E01025625	Enderby & St John's	0.12	1,168	140	14,086
E01025646	North Whetstone	0.11	1,375	151	15,018
E01025664	Stanton & Flamville	0.11	1,274	140	15,457
E01025610	Blaby South	0.10	1,539	154	16,096
E01025662	Stanton & Flamville	0.10	1,423	142	16,119
E01025666	Winstanley	0.10	1,513	151	16,190
E01025629	Fairestone	0.10	1,566	157	16,337
E01025653	Ravenhurst & Fosse	0.09	1,568	141	16,801
E01025657	Saxondale	0.09	1,459	131	17,302
E01025627	Enderby & St John's	0.09	1,652	149	17,439

MAP 3: INCOME DEPRIVATION

Map 3
Income Deprivation
 highlighting the 10% most deprived Super Output Areas in Blaby



Levels of Income Deprivation in Blaby
 (Number of Super Output Areas)

- Top 10% - Most Deprived**
- 10% to 50%**
- 50% to 90%**
- Bottom 10% - Least Deprived**

10% Most Deprived
 Blaby Super Output Areas

SOA Code	Ward
1.5626	Enderby & St John's
2.5646	North Whetstone
3.5664	Stanton Flamville
4.5610	Blaby South
5.5662	Stanton Flamville
6.5666	Winstanley

- District Boundary**
- Electoral Ward Boundaries**
- Super Output Areas**

Source: 2001 Census, Output Area Boundaries.
 Crown copyright 2003. Crown copyright material is reproduced with the permission of the Controller of HMSO.
 © Crown copyright 2005. All rights reserved.
 Use of this image is limited to viewing on-line and printing one copy.
 Leicestershire County Council, LA100/1921.

Produced by R&I Team, Chief Executives
 Leicestershire County Council

Source: Office for Deputy Prime Minister 2004

Each Super Output Area has an average of about 1,500 people

INCOME DEPRIVATION AFFECTING CHILDREN

Indicators

This is a supplementary indicator that measures the proportion of children under 16 in an area who live in income deprived households.

Commentary

Overall, there are 1,340 children in Blaby district living in households which are considered to be income deprived. This accounts for 7.4% of children in the district under the age of 16 years.

It also shows that of the 5,162 people who are income deprived in Blaby district, 26% are aged 16 or under.

The three wards with the highest numbers of children living in households which are income deprived are in Ravenhurst (125 children), Stanton (124 children) and Enderby (113 children).

Map 4 shows the location of the Super Output Areas that are ranked as most deprived in the district.

Graph 4: Spread of National Ranking of all SOAs in Blaby

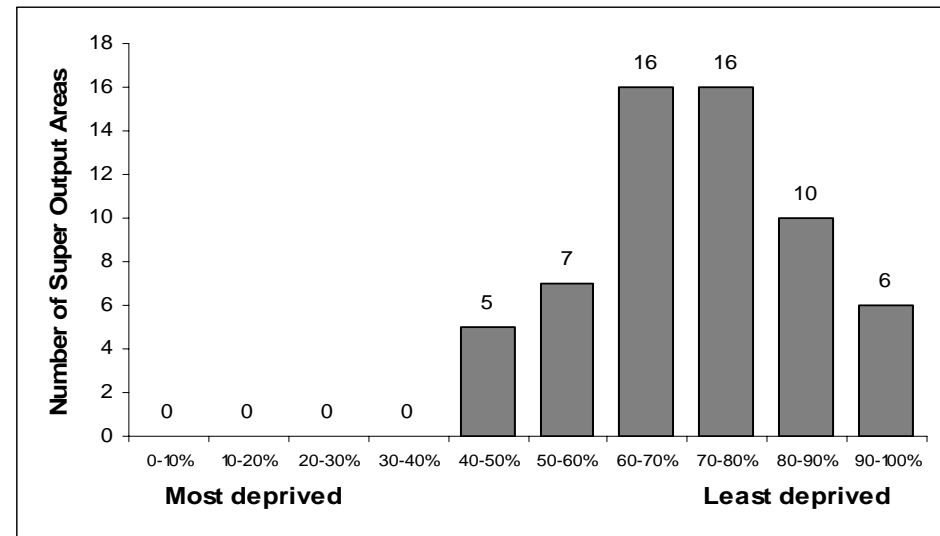
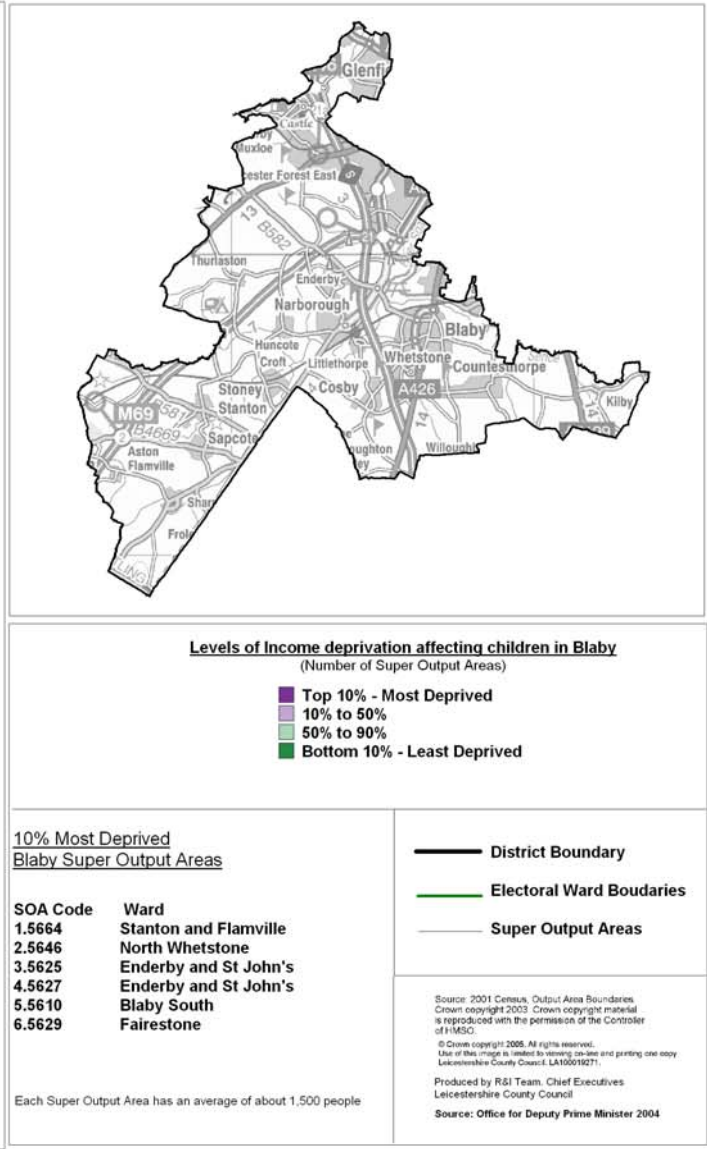
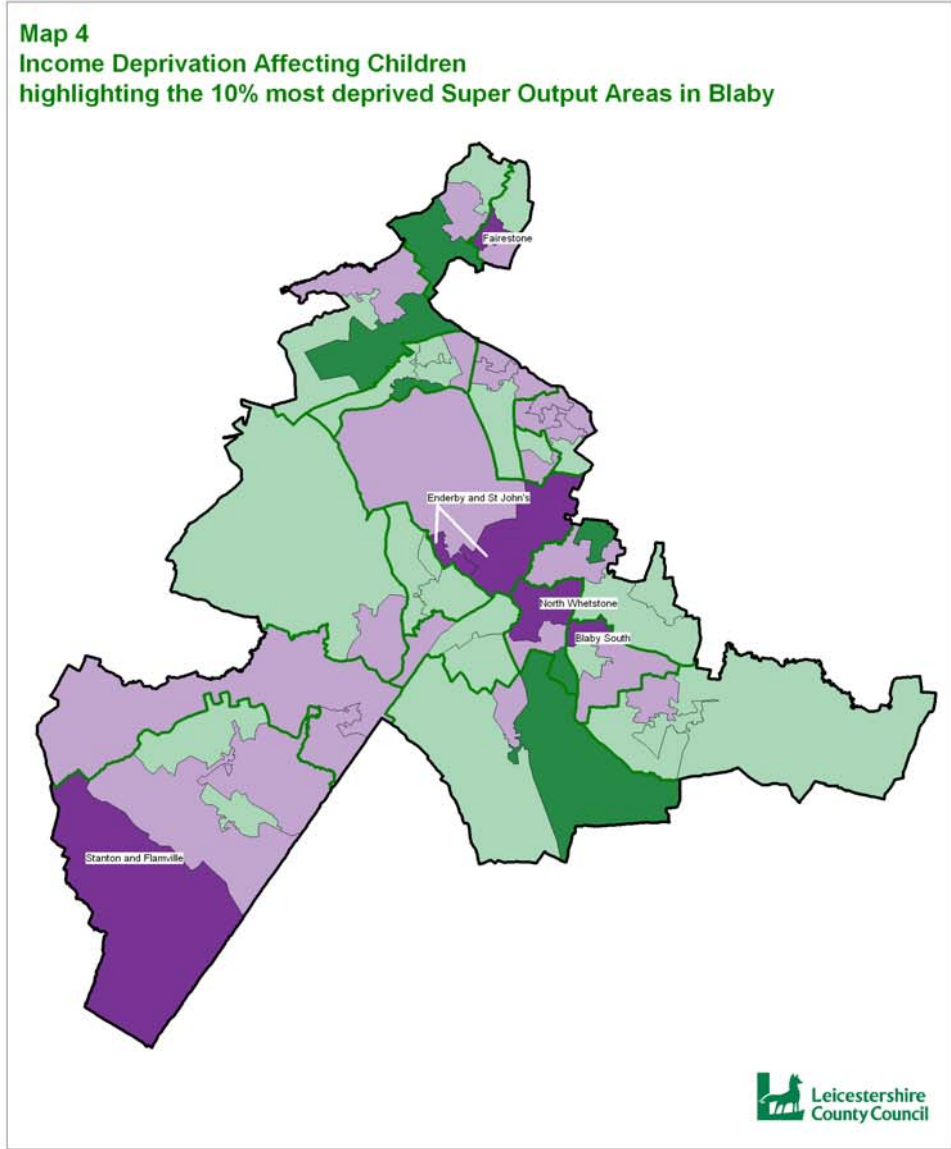


Table 5: Ten most deprived areas in Blaby

SOA	Ward	Score	Total under 16	No. of under 16's income deprived	National Rank
E01025664	Stanton & Flamville	0.18	241	44	13,650
E01025646	North Whetstone	0.18	218	38	14,020
E01025625	Enderby & St John's	0.16	269	44	14,841
E01025627	Enderby & St John's	0.16	283	45	15,096
E01025610	Blaby South	0.14	296	43	16,082
E01025629	Fairestone	0.14	278	38	16,590
E01025643	Narborough & Littlethorpe	0.14	421	55	16,779
E01025666	Winstanley	0.12	317	38	17,967
E01025637	Millfield	0.12	187	22	18,325
E01025662	Stanton & Flamville	0.12	235	27	18,365

MAP 4: INCOME DEPRIVATION AFFECTING CHILDREN



INCOME DEPRIVATION AFFECTING OLDER PEOPLE

Indicators

This is a supplementary indicator that measures the proportion of people aged over 60 years in an area who live in income deprived households.

Commentary

Overall there are 1,742 people aged over 60 living in income deprived households. This accounts for 9.5% of the people aged over 60 in the district.

It also shows that of the 5,162 people who are income deprived in Blaby district, 33.7% are aged over 60.

There are no Super Output Areas in Blaby district which are ranked within the 30% most deprived in England.

Map 5 shows the location of the areas which are ranked as most deprived in the district. These include part of Stanton, Forest and North Whetstone wards.

It shows a different pattern of levels of income deprivation than that experienced by children, with five out of the most deprived six Super Output Areas being different.

Graph 5: Spread of National Ranking of all SOAs in Blaby

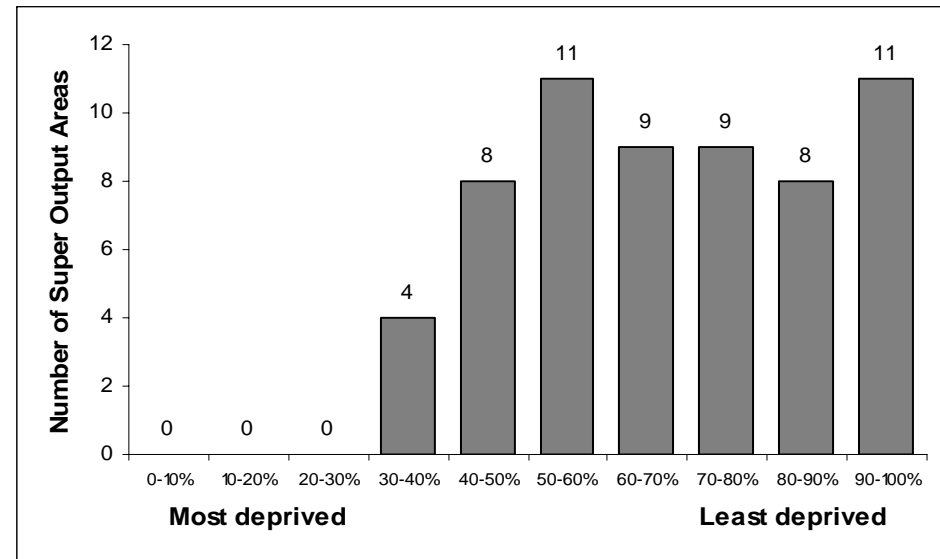
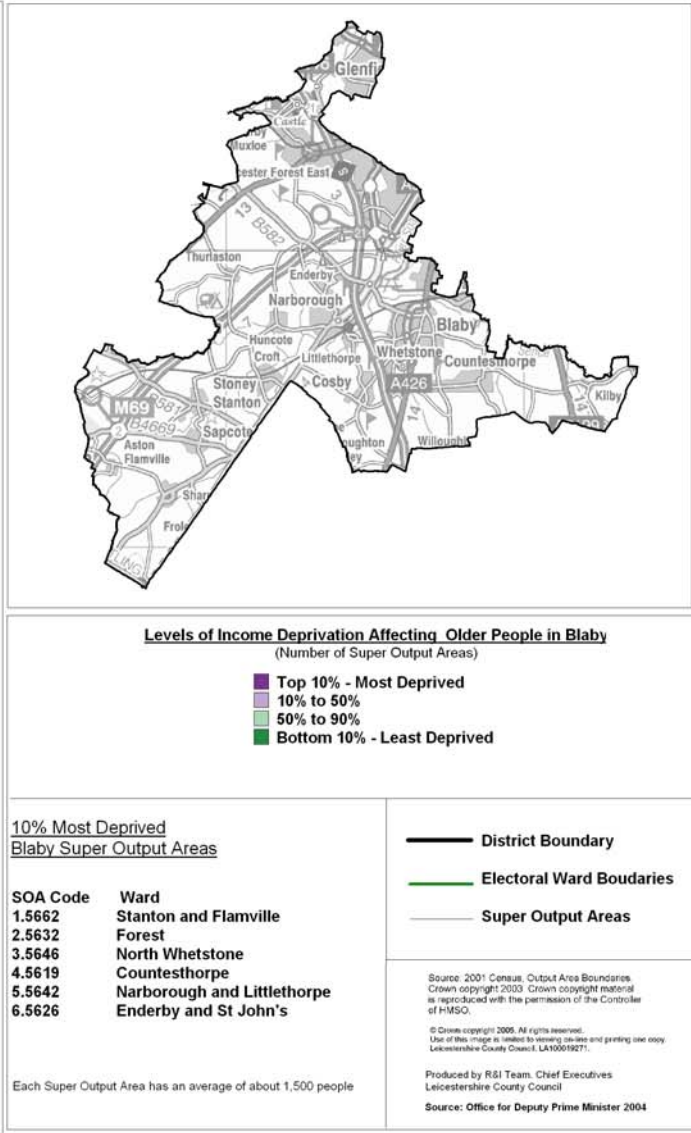
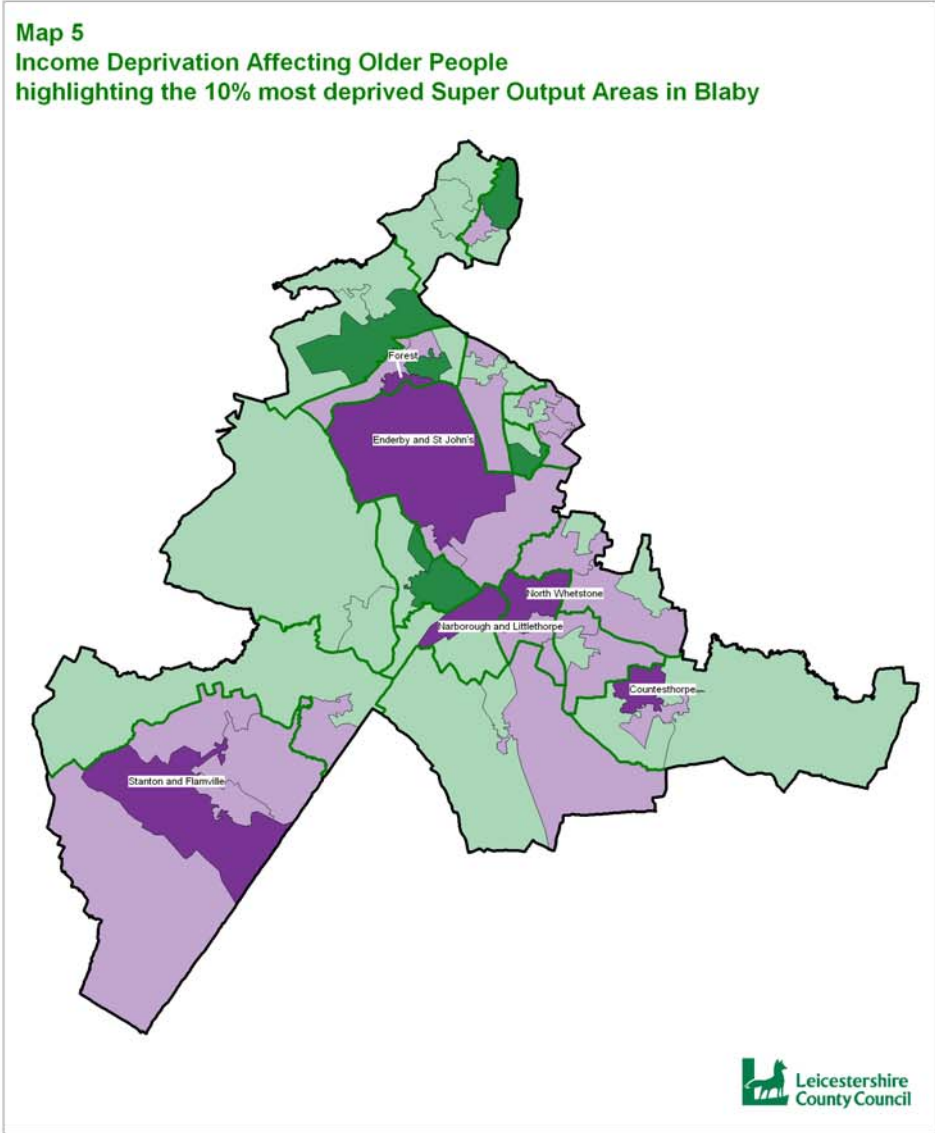


Table 6: Ten most deprived areas in Blaby

SOA	Ward	Score	Total >60yrs	Number deprived	National Rank
E01025662	Stanton & Flamville	0.19	368	69	10,493
E01025632	Forest	0.18	81	15	10,835
E01025646	North Whetstone	0.18	350	62	11,334
E01025619	Countesthorpe	0.16	274	45	12,718
E01025642	Narborough & Littlethorpe	0.16	337	54	13,285
E01025626	Enderby & St John's	0.16	207	33	13,366
E01025634	Forest	0.15	345	52	14,338
E01025625	Enderby & St John's	0.15	281	42	14,507
E01025618	Countesthorpe	0.15	380	56	14,713
E01025657	Saxondale	0.14	338	47	15,556

MAP 5: INCOME DEPRIVATION AFFECTING OLDER PEOPLE



EMPLOYMENT DEPRIVATION

Indicators

The employment deprivation domain measures the proportion of the working age population that are involuntarily excluded from the world of work. It includes both those who are registered as unemployed, but also includes elements of the more 'hidden unemployed' such as those who are out of the workforce through sickness. The indicators used are:

- Unemployment claimant count
- Incapacity Benefit claimants
- Severe Disablement Allowance claimants
- Participants in New Deal

Commentary

In Blaby district, there are **2,979 people** who are employment deprived.

There is only one Super Output Area (part of Fairestone ward) which is ranked within the 40% most deprived in England. The more deprived areas in this domain are all located in the eastern part of the district in close proximity to Leicester – see Map 6.

Graph 6: Spread of National Ranking of all SOAs in Blaby

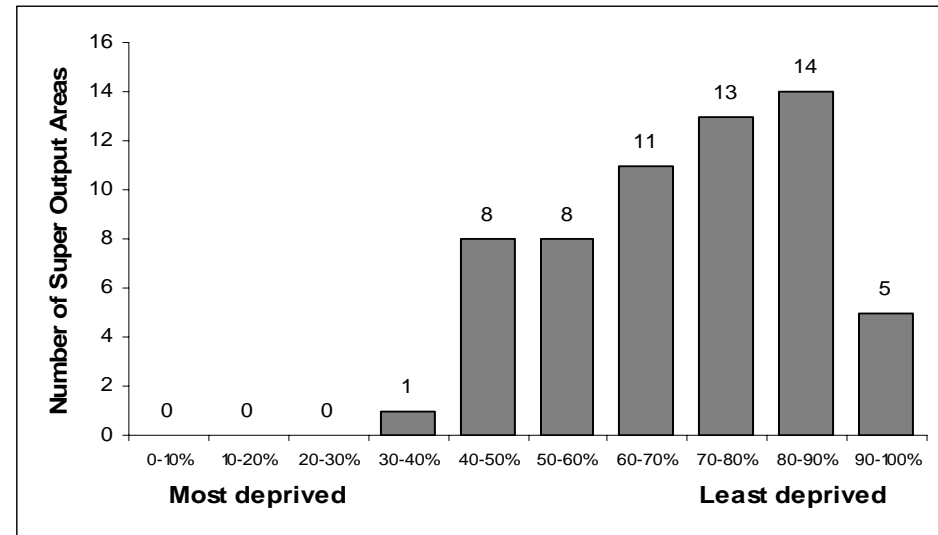
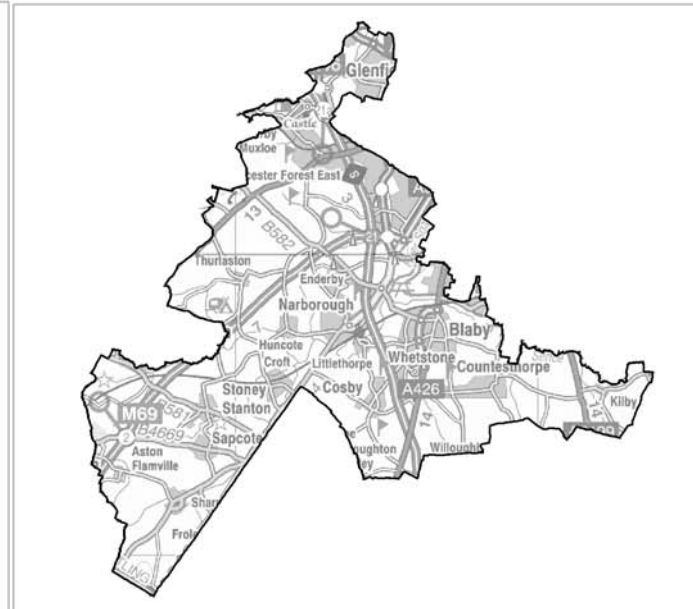
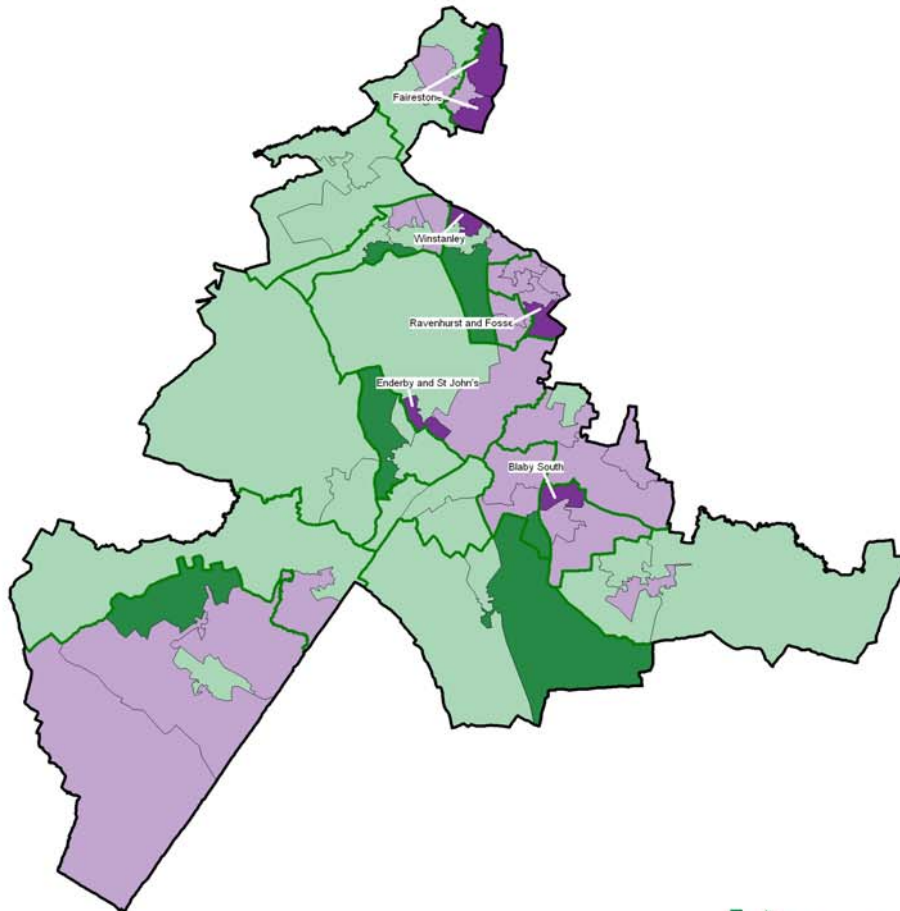


Table 7: Ten most deprived areas in Blaby

SOA	Ward	Score	District Rank	County Rank	National Rank
E01025630	Fairestone	0.10	1	36	12,981
E01025652	Ravenhurst & Fosse	0.09	2	52	14,052
E01025610	Blaby South	0.09	3	57	14,539
E01025666	Winstanley	0.09	4	59	14,782
E01025625	Enderby & St John's	0.09	5	66	15,592
E01025628	Fairestone	0.09	6	67	15,661
E01025655	Ravenhurst & Fosse	0.08	7	72	15,918
E01025656	Ravenhurst & Fosse	0.08	8	74	15,968
E01025629	Fairestone	0.08	9	76	15,979
E01025657	Saxondale	0.08	10	87	16,567

MAP 6: EMPLOYMENT DEPRIVATION

Map 6
Employment Deprivation
 highlighting the 10% most deprived Super Output Areas in Blaby



Levels of Employment Deprivation in Blaby
 (Number of Super Output Areas)

- Top 10% - Most Deprived
- 10% to 50%
- 50% to 90%
- Bottom 10% - Least Deprived

10% Most Deprived
 Blaby Super Output Areas

SOA Code	Ward
1.5630	Fairstone
2.5652	Ravenhurst and Fosse
3.5610	Blaby South
4.5666	Winstanley
5.5625	Enderby and St John's
6.5628	Fairstone

- District Boundary
- Electoral Ward Boundaries
- Super Output Areas

Source: 2001 Census, Output Area Boundaries.
 Crown copyright 2003. Crown copyright material
 is reproduced with the permission of the Controller
 of HMSO

© Crown copyright 2005. All rights reserved.
 Use of this image is limited to viewing on-line and printing one copy
 Leicestershire County Council LA10019271.

Produced by R&I Team, Chief Executives
 Leicestershire County Council

Source: Office for Deputy Prime Minister 2004

Each Super Output Area has an average of about 1,500 people

HEALTH DEPRIVATION AND DISABILITY

Indicators

This domain identifies areas with relatively high rates of people who die prematurely or whose quality of life is impaired by poor health or who are disabled. The indicators used to compile this domain include:

- Years of potential life lost
- Comparative Illness and Disability Ratio
- Measures of emergency admissions to hospital
- Measure of adults under 60 suffering from mood or anxiety disorders

Commentary

Levels of health deprivation in Blaby district are relatively low with no areas in the 50% most deprived in England.

Map 7 shows where the relative levels of deprivation are higher, in parts of Blaby South, Ravenhurst and North Whetstone wards.

Graph 7: Spread of National Ranking of all SOAs in Blaby

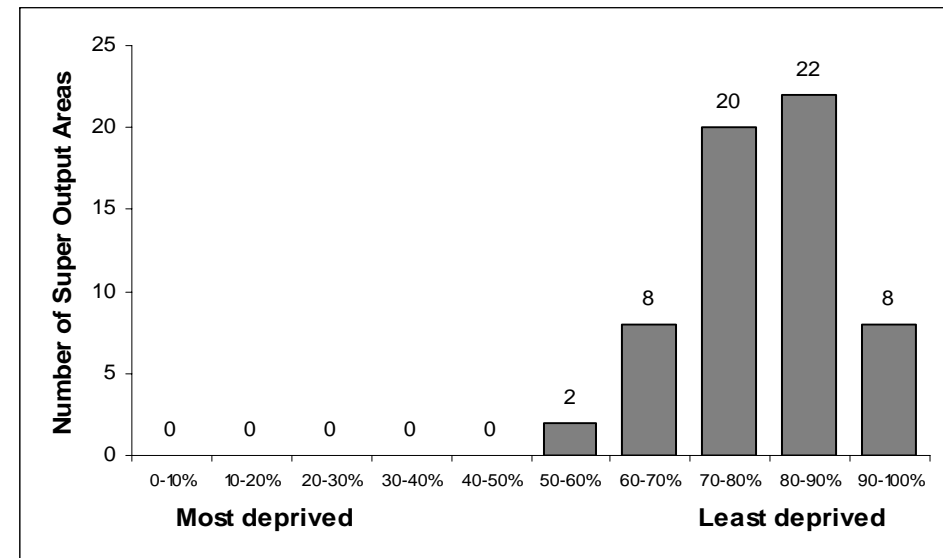
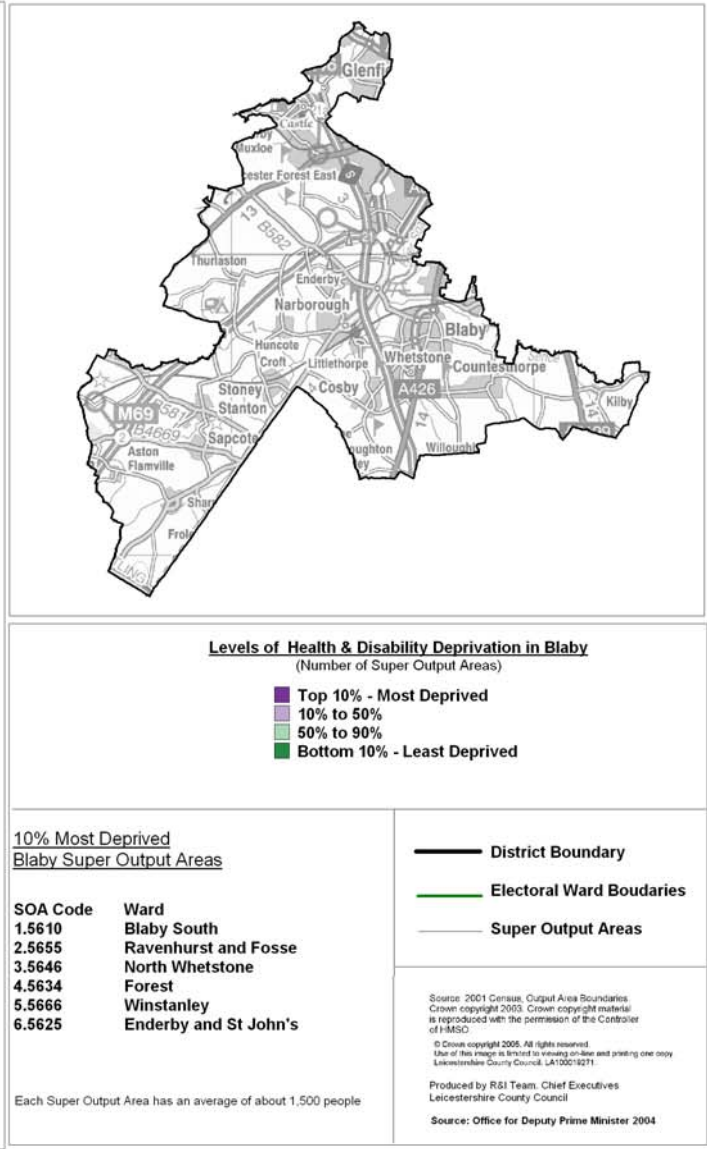
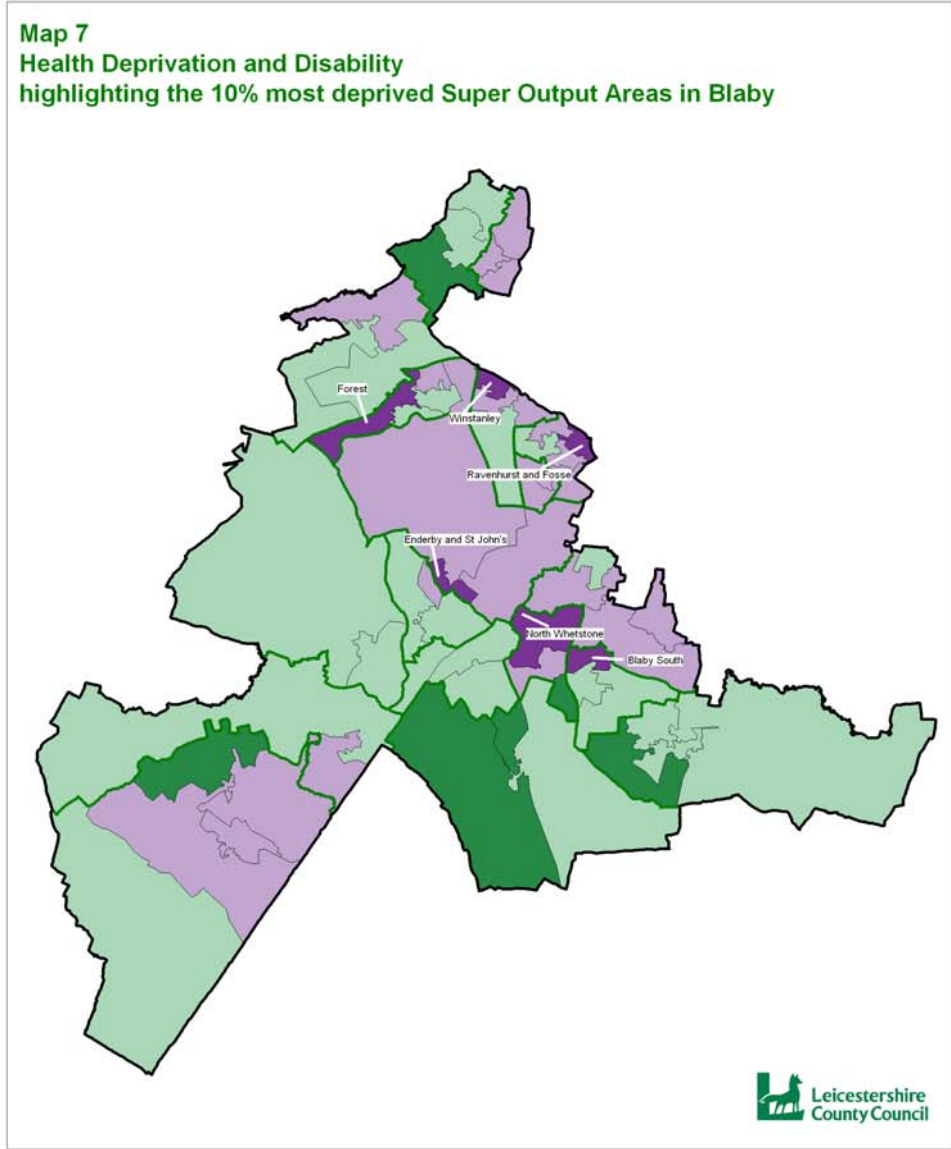


Table 8: Ten most deprived areas in Blaby

SOA	Ward	Score	District Rank	County Rank	National Rank
E01025610	Blaby South	-0.18	1	75	18,593
E01025655	Ravenhurst & Fosse	-0.24	2	91	19,470
E01025646	North Whetstone	-0.29	3	102	20,154
E01025634	Forest	-0.35	4	114	20,883
E01025666	Winstanley	-0.36	5	116	20,970
E01025625	Enderby & St John's	-0.41	6	126	21,691
E01025653	Ravenhurst & Fosse	-0.45	7	136	22,202
E01025629	Fairestone	-0.45	8	137	22,223
E01025656	Ravenhurst & Fosse	-0.48	9	142	22,475
E01025620	Croft Hill	-0.50	10	151	22,758

MAP 7: HEATH DEPRIVATION AND DISABILITY



EDUCATION, SKILLS AND TRAINING

Indicators

This domain captures the extent of deprivation in education, skills and training of people living in a local area. The indicators used are:

Children / young people

- Average points score of pupils at Key Stage 2
- Average points score of pupils at Key Stage 3
- Average points score of pupils at Key Stage 4
- Proportion of young people not staying on in school or further education above 16
- Secondary school absence rate
- Proportion of those aged under 21 not entering higher education

Skills

- Proportion of working age adults with no or low qualifications

Commentary

The district experiences higher levels of deprivation in this domain than most others with two areas ranked within the 30% most deprived in England.

Four of the most deprived areas in the district are located on the edge of the city: in part of Winstanley and Ravenhurst wards.

(See also Map 8)

Graph 8: Spread of National Ranking of all SOAs in Blaby

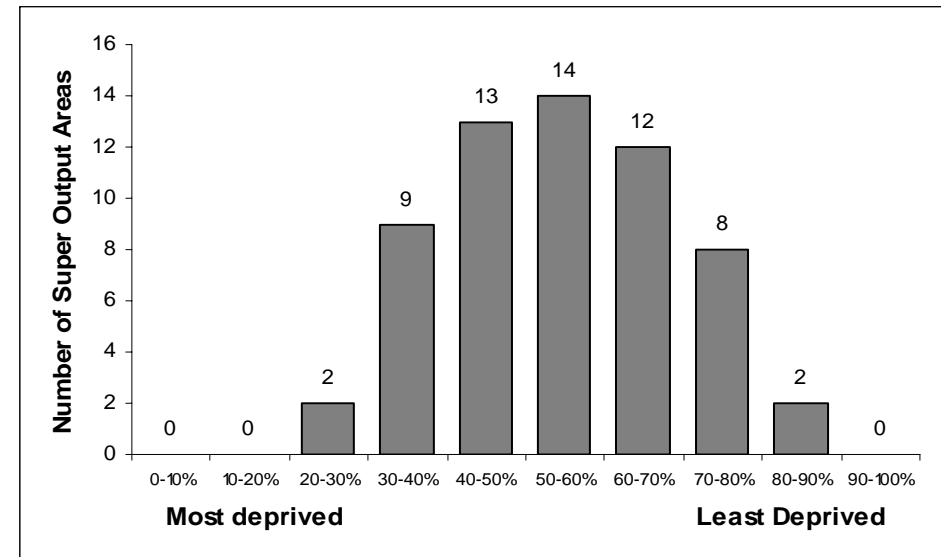
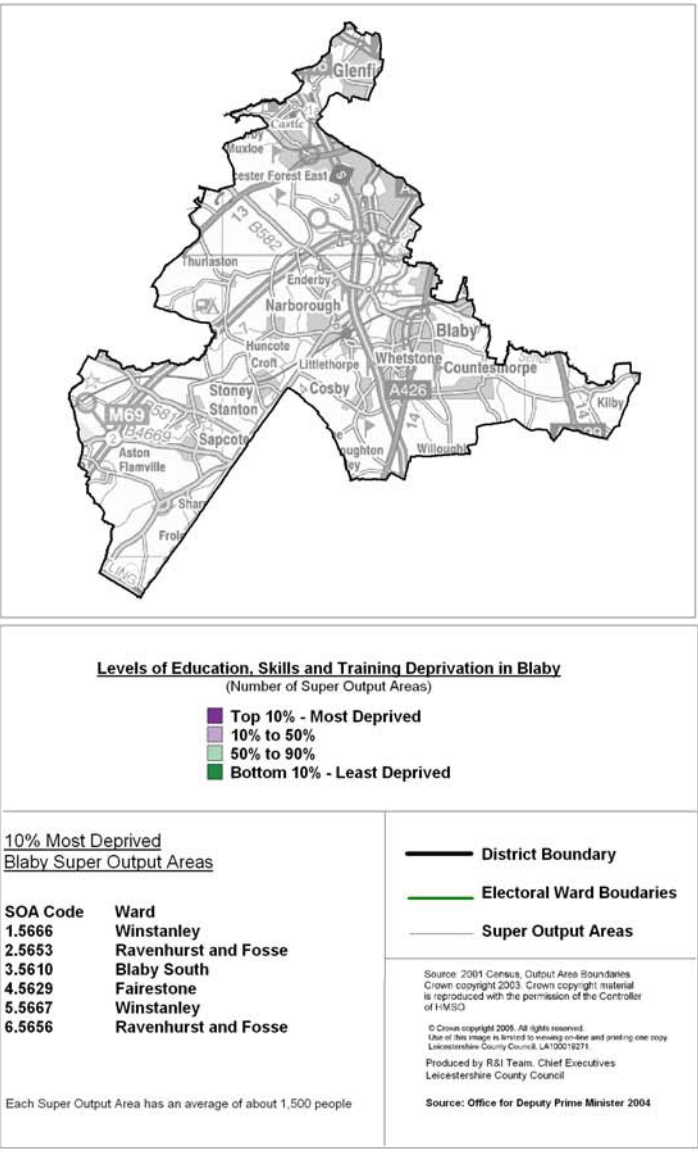
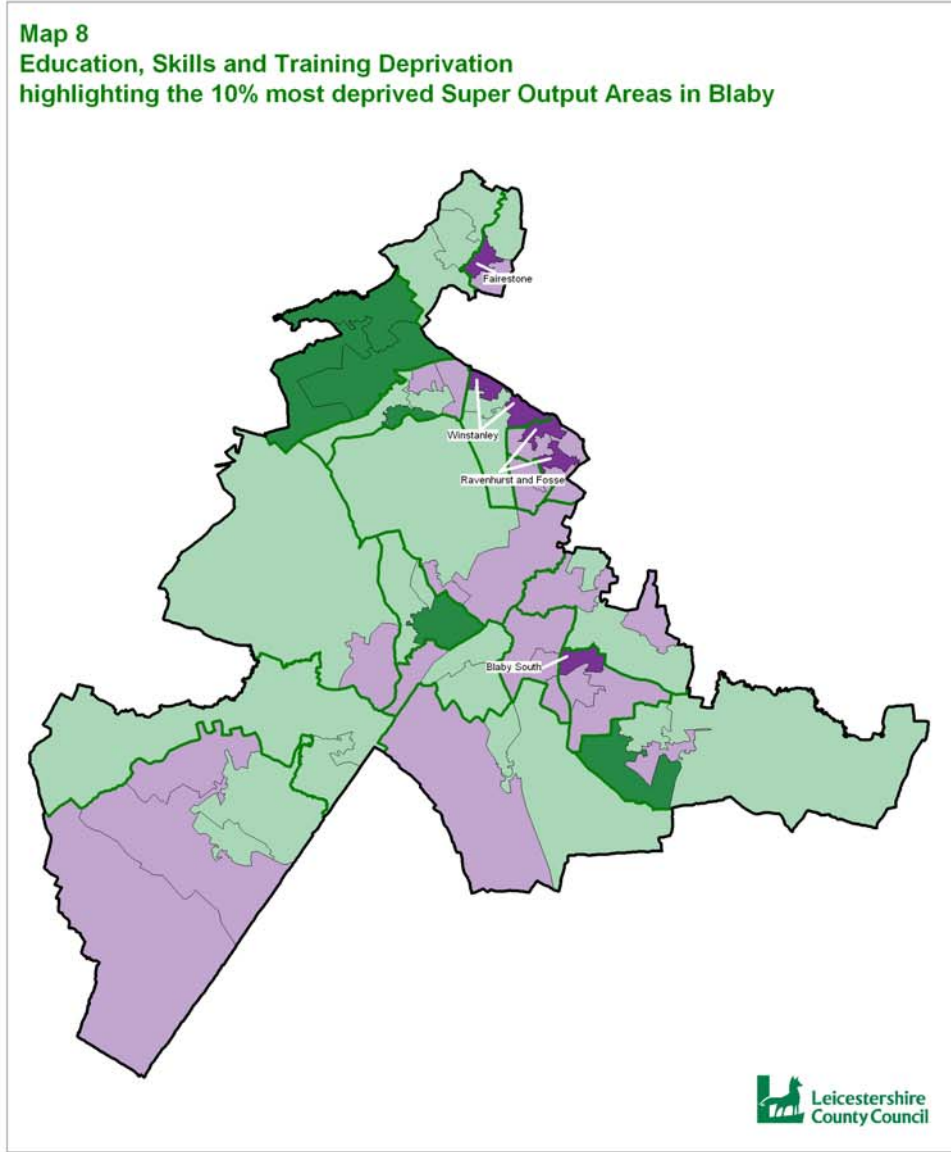


Table 9: Ten most deprived areas in Blaby

SOA	Ward	Score	District Rank	County Rank	National Rank
E01025666	Winstanley	33.11	1	38	7,119
E01025653	Ravenhurst & Fosse	27.33	2	68	9,376
E01025610	Blaby South	26.54	3	70	9,762
E01025629	Fairestone	26.52	4	71	9,768
E01025667	Winstanley	24.68	5	82	10,658
E01025656	Ravenhurst & Fosse	22.00	6	106	12,158
E01025655	Ravenhurst & Fosse	21.87	7	107	12,241
E01025646	North Whetstone	21.78	8	108	12,289
E01025654	Ravenhurst & Fosse	21.26	9	113	12,598
E01025625	Enderby & St John's	20.85	10	118	12,838

MAP 8: EDUCATION, SKILLS AND TRAINING



BARRIERS TO HOUSING AND SERVICES

Indicators

This domain measures the barriers faced by the local population relating to housing along with a measure of the distance needed to travel to key local services. The indicators used are:

Wider Barriers

- Household overcrowding
- Percentage of households with assistance under the homeless provisions of housing legislation
- Difficulty of access to owner occupation

Geographical Barriers

- Road distance to GP premises
- Road distance to a supermarket or convenience store
- Road distance to a primary school
- Road distance to a Post Office

Commentary

There are two areas (parts of Forest and Winstanley wards) that are ranked within the 30% most deprived in England. These two areas are also ranked within the top 40 most deprived areas in the county.

However, overall levels of deprivation are relatively low in this domain, with almost half of the Super Output Areas ranked within the 20% least deprived in England.

The more deprived areas are shown on Map 9.

Graph 9: Spread of National Ranking of all SOAs in Blaby

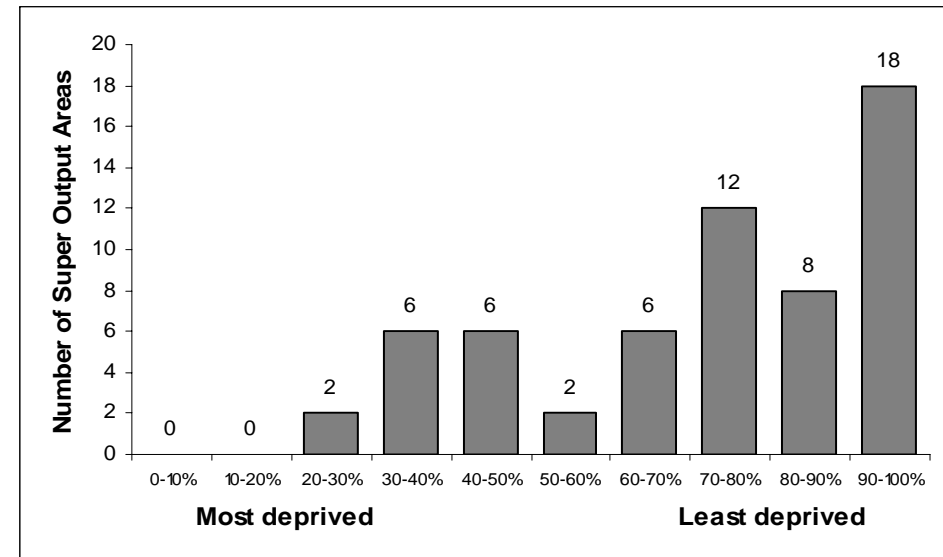
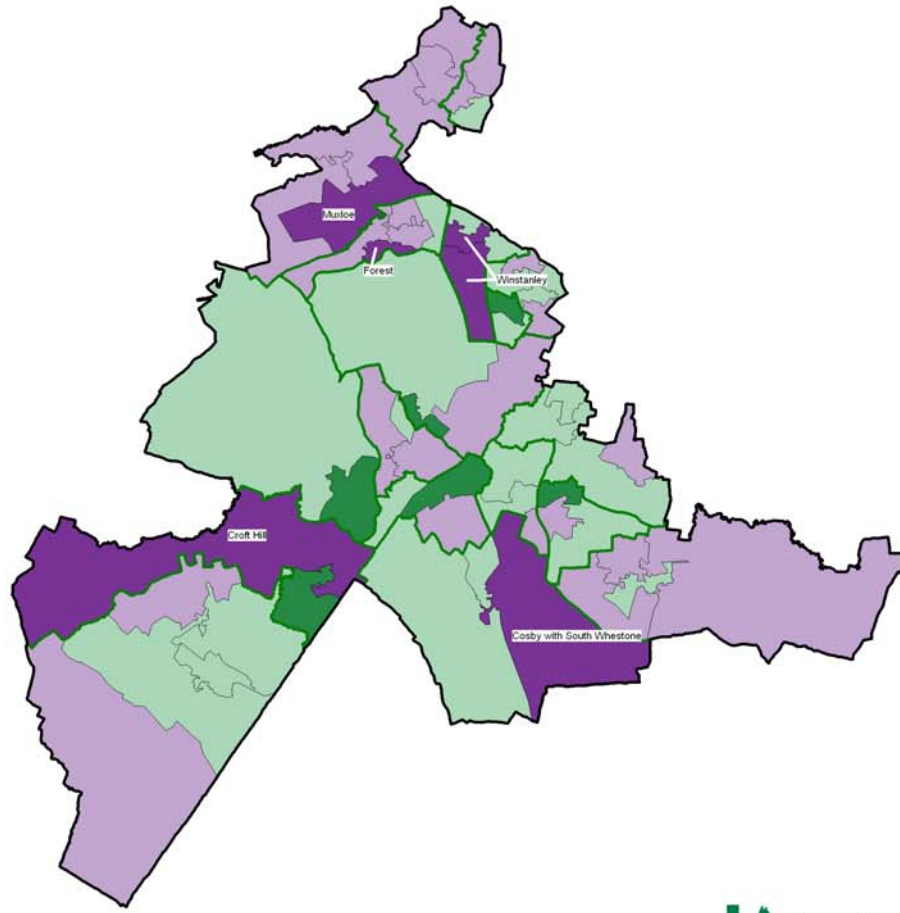


Table 10: Ten most deprived areas in Blaby

SOA	Ward	Score	District Rank	County Rank	National Rank
E01025632	Forest	28.35	1	33	8,379
E01025669	Winstanley	27.19	2	40	9,357
E01025621	Croft Hill	26.60	3	46	9,862
E01025668	Winstanley	25.37	4	58	10,946
E01025638	Muxloe	25.29	5	59	11,030
E01025615	Cosby with South Whetstone	25.07	6	62	11,239
E01025627	Enderby & St John's	24.44	7	67	11,843
E01025623	Ellis	24.08	8	72	12,220
E01025616	Countesthorpe	22.15	9	92	14,247
E01025631	Forest	21.83	10	96	14,584

MAP 9: BARRIERS TO HOUSING AND SERVICES

Map 9
Barriers to Housing and Services
 highlighting the 10% most deprived Super Output Areas in Blaby



Levels of Housing and Services Deprivation in Blaby
 (Number of Super Output Areas)

- Top 10% - Most Deprived
- 10% to 50%
- 50% to 90%
- Bottom 10% - Least Deprived

10% Most Deprived
 Blaby Super Output Areas

SOA Code	Ward
1.5632	Forest
2.5669	Winstanley
3.5621	Croft Hill
4.5668	Winstanley
5.5638	Muxloe
6.5651	Cosby with South Whetstone

- District Boundary
- Electoral Ward Boundaries
- Super Output Areas

Source: 2001 Census, Output Area Boundaries.
 Crown copyright 2003. Crown copyright material is reproduced with the permission of the Controller of HMSO.
 © Crown copyright 2005. All rights reserved.
 Use of this image is limited to viewing on-line and printing use only.
 Leicestershire County Council, LA100019271.
 Produced by R&I Team, Chief Executives
 Leicestershire County Council
 Source: Office for Deputy Prime Minister 2004

Each Super Output Area has an average of about 1,500 people



LIVING ENVIRONMENT

Indicators

This domain looks at both the indoor and outdoor living environment. The indicators used include:

Indoor Living Environment

- Social and private housing in poor condition
- Houses without central heating

Outdoor Living Environment

- Air quality
- Road traffic accidents involving injury to pedestrians and cyclists

Commentary

There are no parts of Blaby district ranked in the 30% most deprived in England in this domain. The more deprived areas in this domain are located in the east of the district and are shown on Map 10.

Graph 10: Spread of National Ranking of all SOAs in Blaby

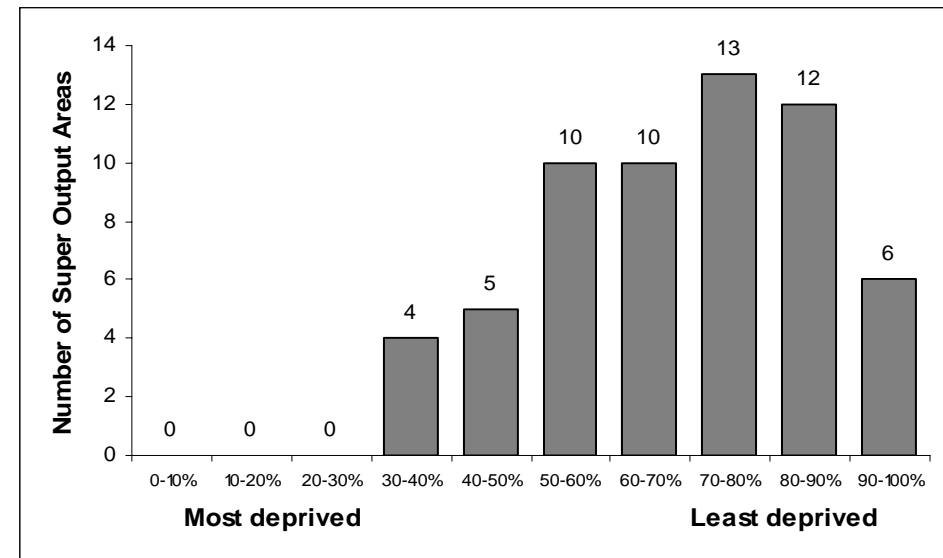
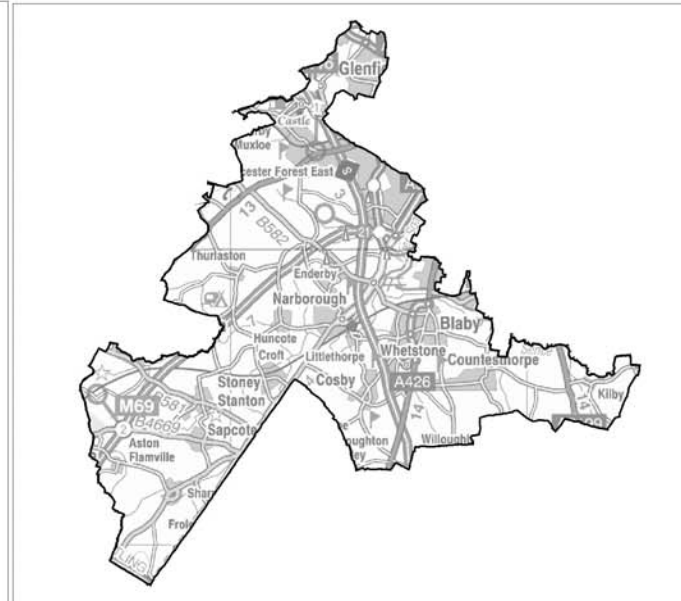
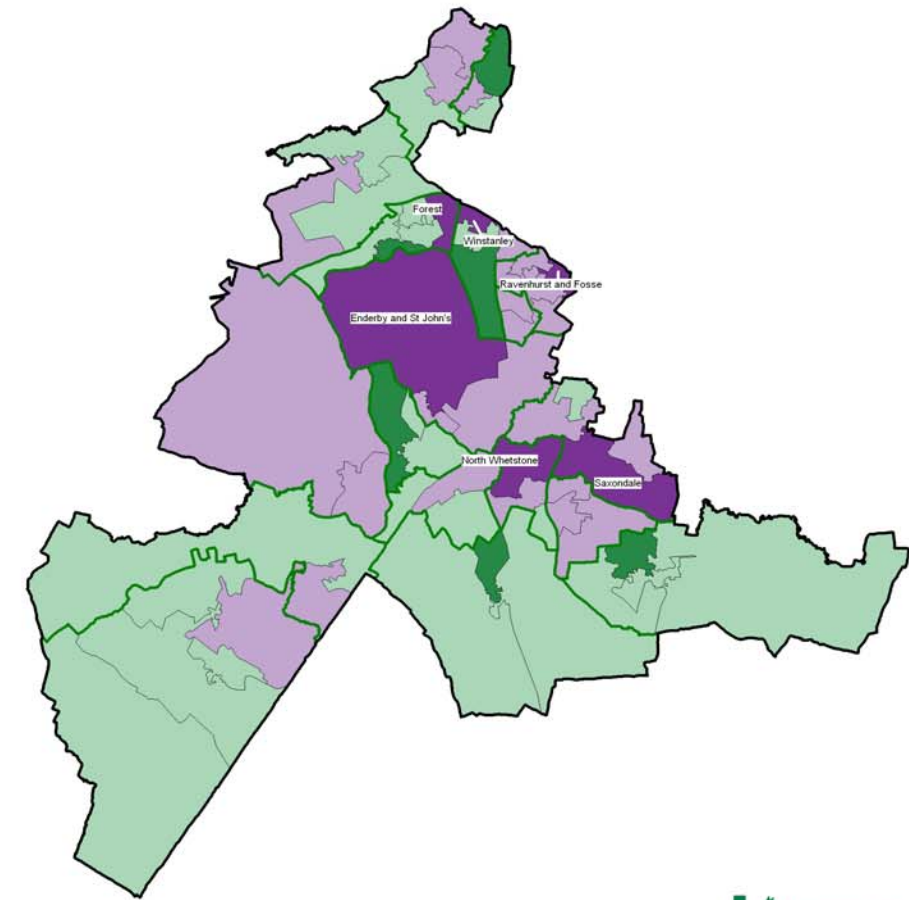


Table 11: Ten most deprived areas in Blaby

SOA	Ward	Score	District Rank	County Rank	National Rank
E01025655	Ravenhurst & Fosse	26.11	1	34	10,552
E01025626	Enderby & St John's	23.40	2	48	11,922
E01025666	Winstanley	22.05	3	50	12,677
E01025659	Saxondale	21.91	4	52	12,765
E01025633	Forest	20.00	5	60	13,922
E01025646	North Whetstone	19.63	6	64	14,196
E01025625	Enderby & St John's	18.54	7	75	14,946
E01025653	Ravenhurst & Fosse	18.24	8	76	15,152
E01025610	Blaby South	17.24	9	87	15,905
E01025622	Ellis	15.94	10	99	16,979

MAP 10: LIVING ENVIRONMENT

Map 10
Living Environment Deprivation
 highlighting the 10% most deprived Super Output Areas in Blaby



Levels of Living Environment Deprivation in Blaby
 (Number of Super Output Areas)

- Top 10% - Most Deprived
- 10% to 50%
- 50% to 90%
- Bottom 10% - Least Deprived

10% Most Deprived
 Blaby Super Output Areas

SOA Code	Ward
1.5655	Ravenhurst and Fosse
2.5626	Enderby and St John's
3.5666	Winstanley
4.5659	Saxondale
5.5633	Forest
6.5646	North Whetstone

- District Boundary
- Electoral Ward Boundaries
- Super Output Areas

Each Super Output Area has an average of about 1,500 people

Source: 2001 Census, Output Area Boundaries. Crown copyright 2003. Crown copyright material is reproduced with the permission of the Controller of HMSO.
 © Crown copyright 2005. All rights reserved. Use of this image is limited to having on-line and printing one copy. Leicestershire County Council, LA10031071.
 Produced by R&I Team, Chief Executives, Leicestershire County Council
 Source: Office for Deputy Prime Minister 2004

CRIME DOMAIN

Indicators

This domain measures the rate of recorded crime for four main crime types – burglary, theft, criminal damage and violence.

Commentary

The most deprived area in this domain in Blaby district is located in part of Winstanley ward and is ranked within the 30% most deprived in England. It is also in the 25 most deprived areas in the county.

Overall, 51 of the 60 Super Output Areas in Blaby district are ranked within the 50% least deprived in England.

Map 11 shows that the areas which are considered to be more deprived are all located on the eastern fringe of the district.

Graph 11: Spread of National Ranking of all SOAs in Blaby

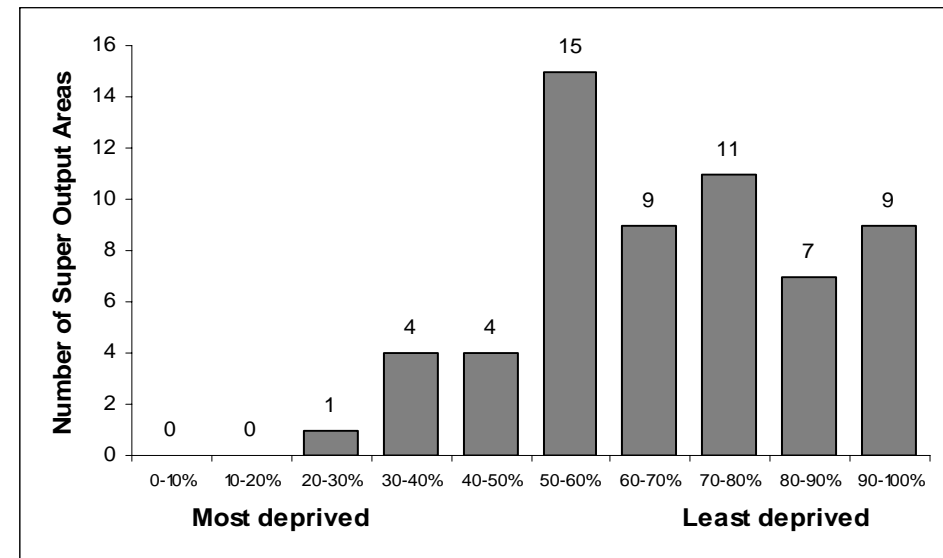
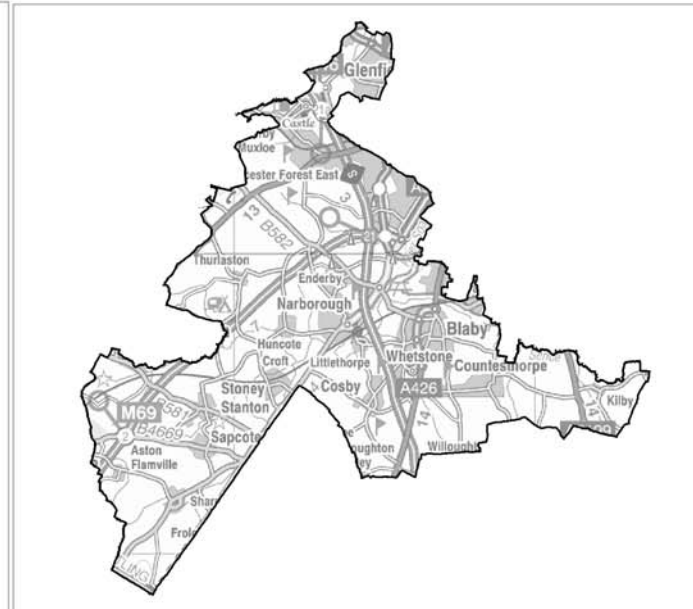
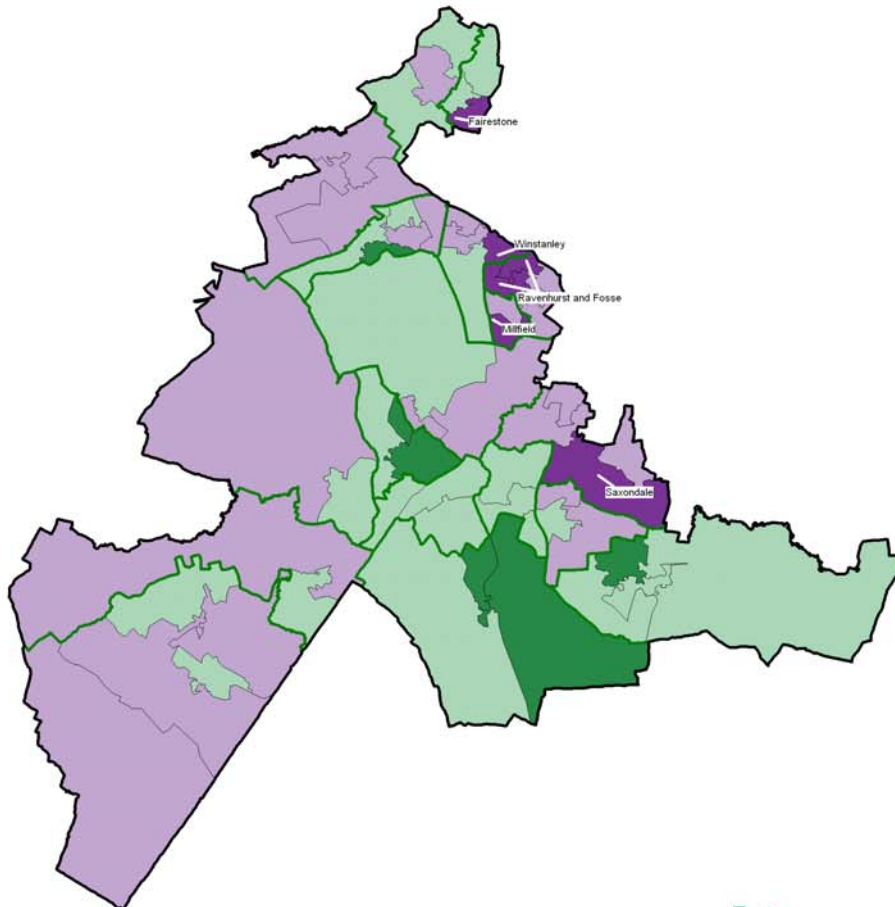


Table 12: Ten most deprived areas in Blaby

SOA	Ward	Score	District Rank	County Rank	National Rank
E01025667	Winstanley	0.66	1	23	7,350
E01025654	Ravenhurst & Fosse	0.39	2	42	10,741
E01025653	Ravenhurst & Fosse	0.30	3	47	12,013
E01025659	Saxondale	0.29	4	50	12,111
E01025637	Millfield	0.24	5	61	12,871
E01025628	Fairestone	0.13	6	80	14,298
E01025655	Ravenhurst & Fosse	0.08	7	83	15,076
E01025622	Ellis	0.07	8	84	15,254
E01025612	Blaby South	0.00	9	96	16,207
E01025666	Winstanley	-0.07	10	107	17,158

MAP 11: CRIME DOMAIN

Map 11
Crime Deprivation
 highlighting the 10% most deprived Super Output Areas in Blaby



Levels of Crime Deprivation in Blaby
 (Number of Super Output Areas)

- Top 10% - Most Deprived**
- 10% to 50%**
- 50% to 90%**
- Bottom 10% - Least Deprived**

10% Most Deprived
Blaby Super Output Areas

SOA Code	Ward
1.5667	Winstanley
2.5654	Ravenhurst and Fosse
3.5653	Ravenhurst and Fosse
4.5659	Saxondale
5.5637	Millfield
6.5628	Fairestone

- District Boundary**
- Electoral Ward Boudaries**
- Super Output Areas**

Source: 2001 Census, Output Area Boundaries, Crown copyright 2003. Crown copyright material is reproduced with the permission of the Controller of HMSO.
 © Crown copyright 2005. All rights reserved.
 Use of this image is limited to viewing on-line and printing on paper.
 Leicestershire County Council, LA105018271.
 Produced by R&I Team, Chief Executives
 Leicestershire County Council
 Source: Office for Deputy Prime Minister 2004

Each Super Output Area has an average of about 1,500 people

APPENDIX 1

The table below shows each Super Output Area in the district, the ward in which it is located along with the ranking within England (where a ranking of 1 = most deprived in England, 32,482 = least deprived in England). For ease of use, any area ranked within the 20% most deprived in England (ranked between 1 and 6,496) has been shaded.

SOA	Ward	IMD	Income	Employment	Health	Education	Barriers	Living Env	Crime	IDAC	IDAOP
E01025610	Blaby South	17,560	16,096	14,539	18,593	9,762	32,344	15,905	19,357	16,082	18,103
E01025611	Blaby South	26,880	24,935	23,338	28,098	15,971	24,666	22,414	23,924	26,035	25,387
E01025612	Blaby South	24,388	20,635	21,993	26,454	16,956	30,104	19,496	16,207	21,456	21,706
E01025613	Cosby with Sth Whetstone	29,071	26,671	24,844	30,340	17,564	29,827	23,421	24,839	25,289	27,167
E01025614	Cosby with Sth Whetstone	30,190	24,330	27,324	30,007	19,547	25,140	29,992	31,763	19,539	29,880
E01025615	Cosby with Sth Whetstone	30,052	30,161	31,520	28,055	21,252	11,239	26,050	31,475	30,865	16,227
E01025616	Countesthorpe	30,064	29,523	28,191	30,867	23,602	14,247	27,424	24,564	27,430	29,602
E01025617	Countesthorpe	28,686	25,180	28,031	29,033	20,084	14,874	26,639	28,357	23,412	23,046
E01025618	Countesthorpe	23,274	19,478	18,034	26,331	13,566	24,834	24,267	26,571	23,358	14,713
E01025619	Countesthorpe	29,771	22,357	28,986	29,089	20,766	22,570	29,549	30,855	21,440	12,718
E01025620	Croft Hill	24,841	19,688	18,846	22,758	18,470	32,272	21,086	29,799	21,441	17,538
E01025621	Croft Hill	26,305	25,969	28,625	28,745	17,678	9,862	26,687	18,412	20,440	28,433
E01025622	Ellis	23,751	21,271	21,943	26,458	17,973	24,500	16,979	15,254	22,995	22,145
E01025623	Ellis	25,516	25,312	23,480	27,312	18,837	12,220	18,228	27,776	25,982	25,724
E01025624	Ellis	30,618	30,718	29,317	29,930	23,531	16,957	24,935	25,762	30,355	29,781
E01025625	Enderby & St John's	18,143	14,086	15,592	21,691	12,838	32,329	14,946	17,197	14,841	14,507
E01025626	Enderby & St John's	25,166	19,147	25,368	24,975	21,401	31,870	11,922	22,066	19,717	13,366
E01025627	Enderby & St John's	19,635	17,439	20,459	23,788	13,134	11,843	20,625	17,515	15,096	18,274
E01025628	Fairestone	22,585	23,442	15,661	25,151	14,637	29,146	25,080	14,298	21,023	29,409
E01025629	Fairestone	19,094	16,337	15,979	22,223	9,768	23,021	22,880	23,212	16,590	21,465
E01025630	Fairestone	24,889	29,065	12,981	23,882	22,766	14,904	29,832	30,368	28,171	32,172
E01025631	Forest	27,725	28,440	25,953	27,650	18,476	14,584	26,929	21,296	24,594	31,459
E01025632	Forest	30,110	29,483	29,604	28,402	26,766	8,379	31,187	30,904	31,338	10,835
E01025633	Forest	23,679	24,645	18,204	26,055	15,869	32,016	13,922	18,540	23,170	27,907
E01025634	Forest	27,098	23,220	28,200	20,883	21,445	17,742	24,887	24,503	27,489	14,338
E01025635	Forest	23,206	22,846	18,693	24,686	13,789	19,723	23,784	22,112	28,208	18,402
E01025636	Millfield	24,514	22,955	21,611	23,547	14,457	32,389	19,214	19,426	23,584	24,328

Continued on next page

APPENDIX 1

SOA	Ward	IMD	Income	Employment	Health	Education	Barriers	Living Env	Crime	IDAC	IDAOP
E01025637	Millfield	22,720	23,844	19,006	24,420	13,414	31,619	19,129	12,871	18,325	31,152
E01025638	Muxloe	28,440	31,512	26,773	29,118	25,874	11,030	23,609	17,368	30,614	31,983
E01025639	Muxloe	27,595	24,627	23,732	25,212	24,343	23,919	25,626	17,618	21,193	24,902
E01025640	Muxloe	26,748	22,591	24,442	28,991	24,087	21,249	19,167	18,408	23,198	25,562
E01025641	Narborough & Littlethorpe	30,204	29,083	27,379	29,878	19,514	21,278	26,284	28,126	25,639	28,479
E01025642	Narborough & Littlethorpe	28,785	22,469	27,118	26,401	22,937	32,341	21,400	22,841	24,531	13,285
E01025643	Narborough & Littlethorpe	26,733	19,214	26,248	27,174	16,388	26,792	26,300	25,256	16,779	25,461
E01025644	Normanton	27,591	23,516	24,172	28,513	14,926	32,258	23,368	25,906	19,681	26,669
E01025645	Normanton	28,743	27,855	24,461	27,143	21,885	30,042	20,799	19,470	28,545	28,338
E01025646	North Whetstone	19,676	15,018	20,397	20,154	12,289	25,395	14,196	24,496	14,020	11,334
E01025647	North Whetstone	25,047	22,701	22,194	25,402	14,251	25,868	18,724	26,740	21,655	19,832
E01025648	North Whetstone	30,667	30,598	31,877	30,609	17,432	16,036	28,015	30,604	30,966	20,530
E01025649	Pastures	31,319	30,077	24,045	29,655	26,645	24,661	29,348	32,062	29,159	31,607
E01025650	Pastures	30,926	26,321	29,961	28,973	23,287	22,497	29,807	28,199	24,508	30,376
E01025651	Pastures	30,255	30,238	27,636	23,505	18,525	29,815	23,870	30,768	27,909	31,292
E01025652	Ravenhurst & Fosse	20,564	20,215	14,052	24,417	12,974	23,034	20,884	22,031	23,691	16,533
E01025653	Ravenhurst & Fosse	17,824	16,801	19,332	22,202	9,376	23,164	15,152	12,013	18,603	16,194
E01025654	Ravenhurst & Fosse	22,276	22,710	20,368	27,419	12,598	29,340	18,431	10,741	22,092	29,347
E01025655	Ravenhurst & Fosse	18,161	19,838	15,918	19,470	12,241	27,378	10,552	15,076	22,854	19,046
E01025656	Ravenhurst & Fosse	20,396	20,705	15,968	22,475	12,158	26,723	17,071	18,650	22,558	21,264
E01025657	Saxondale	20,200	17,302	16,567	23,431	13,201	27,935	18,397	18,110	21,157	15,556
E01025658	Saxondale	25,123	26,733	21,741	24,701	14,254	23,639	22,547	18,435	26,379	24,105
E01025659	Saxondale	23,450	19,839	23,116	26,034	20,843	31,511	12,765	12,111	23,344	17,147
E01025660	Saxondale	29,856	29,263	25,676	29,344	19,203	26,630	27,951	22,065	30,478	23,612
E01025661	Stanton & Flamville	29,987	28,322	30,152	29,914	16,828	20,891	29,258	24,371	29,103	16,275
E01025662	Stanton & Flamville	23,600	16,119	22,094	25,582	15,162	31,119	25,024	19,843	18,365	10,493
E01025663	Stanton & Flamville	26,049	20,729	22,699	25,588	20,654	28,377	20,929	21,555	19,315	17,840
E01025664	Stanton & Flamville	22,742	15,457	22,687	28,180	17,627	14,994	26,110	20,468	13,650	19,745
E01025665	Stanton & Flamville	30,243	27,056	26,024	25,923	20,823	32,089	28,052	26,865	28,544	19,693
E01025666	Winstanley	16,362	16,190	14,782	20,970	7,119	30,595	12,677	17,158	17,967	17,006
E01025667	Winstanley	19,886	21,739	18,521	25,788	10,658	31,411	18,176	7,350	21,000	22,844

Continued on next page

APPENDIX 1

SOA	Ward	IMD	Income	Employment	Health	Education	Barriers	Living Env	Crime	IDAC	IDAOP
E01025668	Winstanley	26,694	27,569	27,838	25,561	18,657	10,946	28,547	18,289	20,808	28,422
E01025669	Winstanley	29,099	29,666	29,325	27,075	23,535	9,357	30,584	24,246	25,532	16,872



If you require information contained in this publication in another version eg large print, Braille, tape or an alternative language please call 0116 265 8262 or email sgeddes@leics.gov.uk
