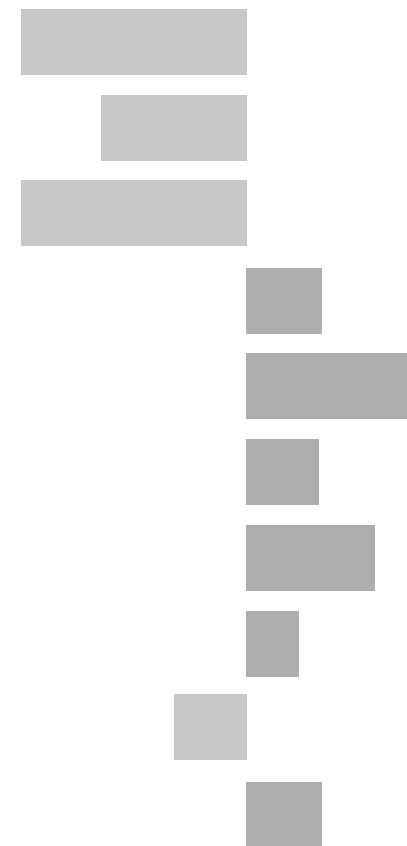


Oadby Electoral Division

2011 Census Key Statistics

Alex Lea
May 2013

Research and Insight Team
Leicestershire County Council



Alex Lea

Research & Insight Manager

Research & Insight Team
Strategy, Partnerships & Communities
Leicestershire County Council
County Hall
Glenfield
Leicester LE3 8RB

Tel 0116 305 6803

Email alex.lea@leics.gov.uk

Produced by the Research and Insight Team at Leicestershire County Council.

Whilst every effort has been made to ensure the accuracy of the information contained within this report, Leicestershire County Council cannot be held responsible for any errors or omission relating to the data contained within the report.

CONTENTS

Introduction

About this Report	4
2011 Census	4
Data	5
Census Geography	5
Indicator Changes 2001-11	6

Population

KS101EW - Usual Resident Population	7
KS102EW - Age Structure	7

Households

KS105EW - Household Composition	8
KS402EW - Tenure	9

Health and Caring

KS301EW - Health and Provision of Unpaid Care	9
---	---

Ethnicity

KS201EW - Ethnic Group	10
------------------------	----

Economy

KS601EW - Economic Activity	11
KS605EW - Industry	12

Transport

KS404EW - Car and Van Availability	13
QS701EW - Method of Travel to Work	13

INTRODUCTION

ABOUT THIS REPORT

This report provides a broad overview of the 2011 Census Key Statistics data, released by the Office for National Statistics on 30th January 2013, as part of the Second Release. This report summarises a selection of key headline datasets of this release for Leicestershire Electoral Divisions (EDs).

The Research and Insight Team at Leicestershire County Council has used data from the Second release to create an interactive Tableau dashboard containing 32 datasets covering the following geographies:

- England
- East Midlands
- East Midlands counties . Including Leicestershire
- Leicester City and Rutland Unitary Authorities
- Leicestershire districts

In addition, a headline report covers the results for Leicestershire and the seven districts that make up the county. The dashboard and report are available at the following links:

Census 2011 Key Statistics Dashboard

<http://public.tableausoftware.com/views/LAKeyStatsDashboard/Dashboard>

Census 2011 Key Statistics Headline Report

http://www.lsr-online.org/reports/census_2011_key_statistics_headline_report/download/1/Census%202011%20Second%20Release%20FINAL.pdf

2011 CENSUS

Census statistics help paint a picture of the nation and how we live. They provide a detailed snapshot of the population and its characteristics, and underpin funding allocation to provide public services.¹ Data from the 2011 Census is made available at a variety of different levels of geography and in various releases.

The Key Statistics data covers a broad range of socio-economic topics, including data on ethnicity, health and employment. Each Key Statistic dataset is referred to by its unique three-digit code with the 'KS' prefix to denote a Key statistic (e.g. KS101). These are used throughout the report.

A full list of the 35 Key Statistics data tables are available here:

<http://www.ons.gov.uk/ons/publications/re-reference-tables.html?edition=tcn%3A77-286262>

¹ Office for National Statistics (ONS), 2013.

Further results from the census will be released throughout 2013, for more information, please visit:

<http://www.lsr-online.org/census-2011.html>

More information on the 2011 Census can be found here:

<http://www.ons.gov.uk/ons/guide-method/census/2011/index.html>

DATA

Data has been compiled for Leicestershire Electoral Divisions, covering the key datasets from the 2011 Census Key statistics.

Figures for 2011 and 2001 are included, along with the overall and percentage change between the two censuses. Data for each indicator is presented in a table and chart.

Population data is displayed in a table, a population pyramid and a chart showing percentage change between 2001 and 2011. All other data is displayed in tables, and charts. Charts for change between 2001 and 2011 are coloured according to the degree of change between the two censuses; grey corresponds to smallest change and green the largest change. A marker indicates the average figure for all Leicestershire Electoral Divisions.

GEOGRAPHY

Maps for all County Council Electoral Divisions can be found here:

http://www.leics.gov.uk/index/your_council/local_democracy/conductofcouncillorsandemployees/electoraldivisionmapsindex/electoraldivisionmaps.htm

As Census data is not made available for Electoral Divisions, smaller areas, called Lower Super Output Areas (LSOAs) have been used as building blocks for the figures included in this report. LSOAs are small parcels of geography, containing a minimum of 1,000 people, a maximum of 3,000 and an average of 1,500. LSOAs were initially developed for the 2001 Census and are used to release a range of neighbourhood-level datasets from various sources. There are 396 LSOAs in Leicestershire.

In some instances, LSOAs do not fit neatly within Electoral Divisions and in these cases, population weighted centroids - representing the 'centre of gravity' for population within an area - have been used in order to assign each LSOA to an Electoral Division. Electoral Divisions that fall within this category are indicated with a (*).

More information on Lower Super Output Areas can be found here:

<http://www.ons.gov.uk/ons/guide-method/geography/beginner-s-guide/census/super-output-areas--soas-/index.html>

INDICATOR CHANGES 2001-11

The following questions were asked in slightly different ways in 2011 compared to 2001. As such, care should be taken when making comparison between years.

KS201EW : Ethnic Group

Asian/Asian British: Chinese
 Mixed/multiple ethnic group: Other Mixed
 Mixed/multiple ethnic group: White and Asian
 Mixed/multiple ethnic group: White and Black African
 Mixed/multiple ethnic group: White and Black Caribbean
 Other ethnic group: Any other ethnic group
 White: English/Welsh/Scottish/Northern Irish/British
 White: Other White

KS301EW : Health and Provision of Unpaid Care

Day-to-day activities limited
 Day-to-day activities limited: Age 16 to 64
 Day-to-day activities not limited
 Fair health
 Very/ bad Health
 Very/ good Health

KS601EW : Economic Activity

All usual residents aged 16 and over
 Economically active: Employee: Full-time
 Economically active: Employee: Part-time
 Economically active: Full-time student

Economically active: Self-employed
 Economically active: Unemployed
 Economically inactive: Long-term sick or disabled
 Economically inactive: Looking after home or family
 Economically inactive: Other
 Economically inactive: Retired
 Economically inactive: Student (including full-time)
 Long-term unemployed
 Unemployed: Age 50 and over
 Unemployed: Never worked

KS605EW : Industry

All usual residents aged 16 and over in employment
 A Agriculture, forestry and fishing
 B Mining and quarrying
 C Manufacturing
 D, F Electricity, gas, steam, air conditioning supply etc
 F Construction
 G Wholesale and retail trade; repair of motor vehicles etc
 H, J Transport, storage, information and communication
 I Accommodation and food service activities
 K Financial and insurance activities
 L,M,N Real estate activities Professional, scientific etc
 O Public administration and defence etc
 P Education
 Q Human health and social work activities
 R, S, T, U Other

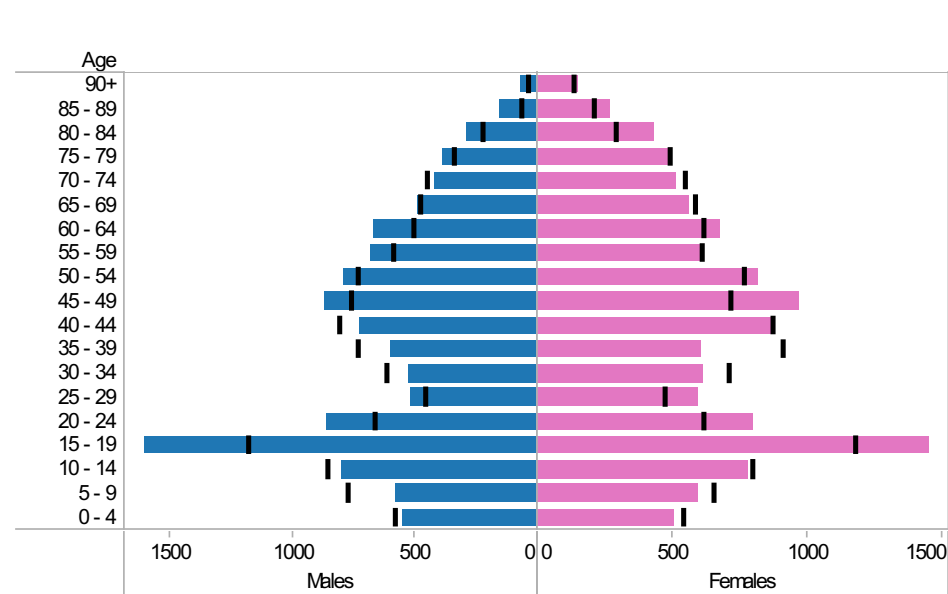
Oadby ED: KS101EW : Usual Resident Population, KS102EW : Age Structure

■ Males
 ■ Females
 ■ Persons

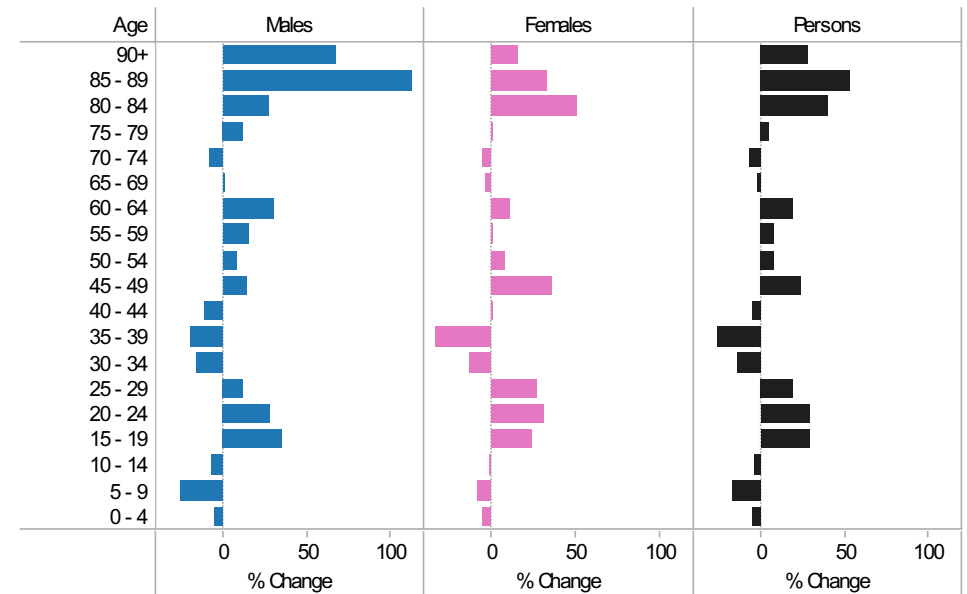
2001-11 Population by sex and quinary age band

Age	Males			Females			Persons		
	2001	2011	Change 2001-11	2001	2011	Change 2001-11	2001	2011	Change 2001-11
90+	40	67	27	128	148	20	168	215	47
85 - 89	72	153	81	204	270	66	276	423	147
80 - 84	229	290	61	285	429	144	514	719	205
75 - 79	342	383	41	484	485	1	826	868	42
70 - 74	454	417	-37	543	513	-30	997	930	-67
65 - 69	485	487	2	582	562	-20	1,067	1,049	-18
60 - 64	512	668	156	609	671	62	1,121	1,339	218
55 - 59	592	683	91	604	608	4	1,196	1,291	95
50 - 54	734	790	56	761	818	57	1,495	1,608	113
45 - 49	767	871	104	710	966	256	1,477	1,837	360
40 - 44	813	723	-90	868	871	3	1,681	1,594	-87
35 - 39	739	599	-140	907	606	-301	1,646	1,205	-441
30 - 34	623	523	-100	703	611	-92	1,326	1,134	-192
25 - 29	462	516	54	465	590	125	927	1,106	179
20 - 24	671	859	188	613	801	188	1,284	1,660	376
15 - 19	1,186	1,608	422	1,175	1,450	275	2,361	3,058	697
10 - 14	863	800	-63	791	780	-11	1,654	1,580	-74
5 - 9	779	581	-198	647	592	-55	1,426	1,173	-253
0 - 4	583	554	-29	535	506	-29	1,118	1,060	-58
All Ages	10,946	11,572	626	11,614	12,277	663	22,560	23,849	1,289

2011 (coloured bars) and 2001 (black marks) population by sex and quinary age age



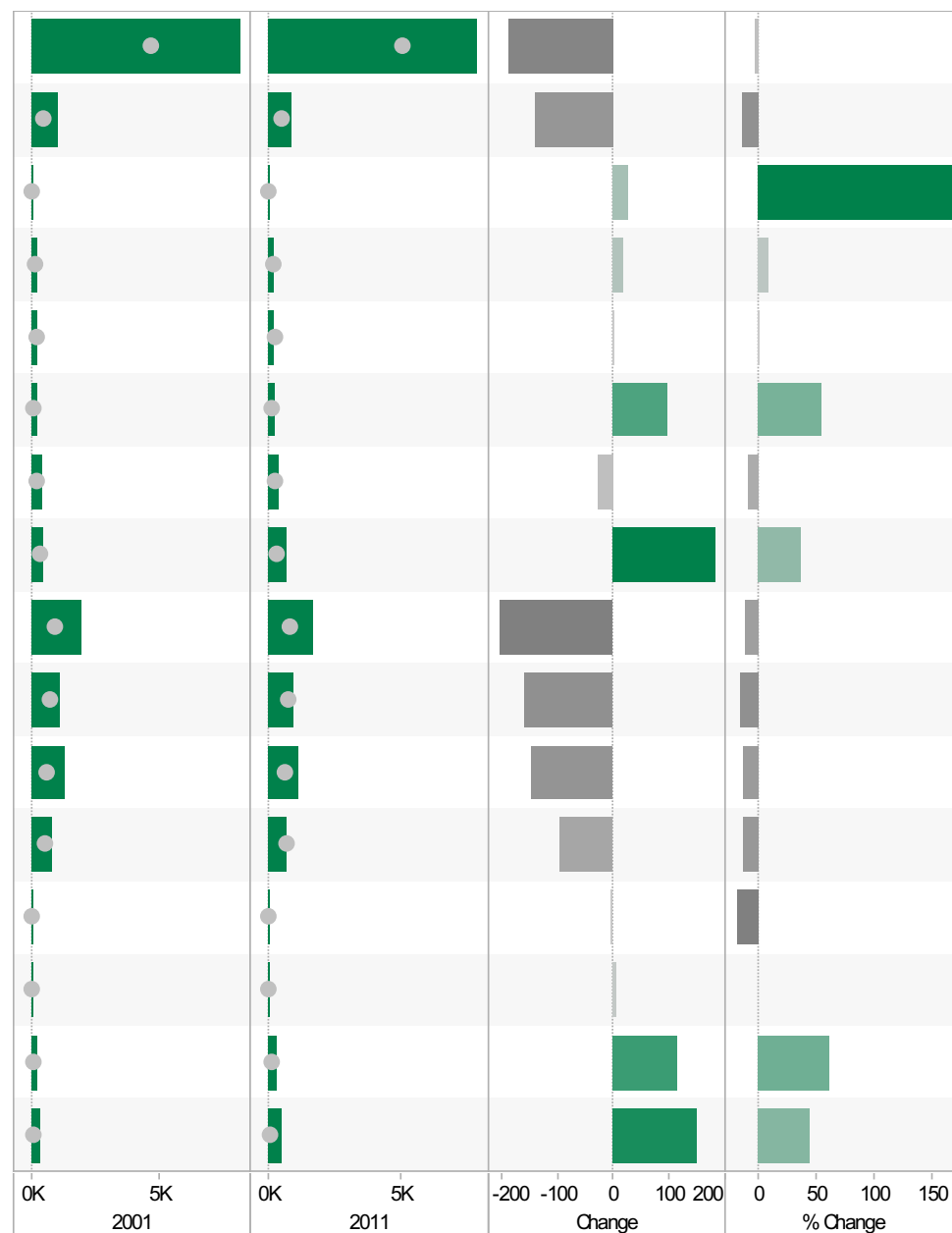
2001-11 Percentage change by sex and quinary age band



Oadby ED
KS105EW : Household Composition, 2001-11

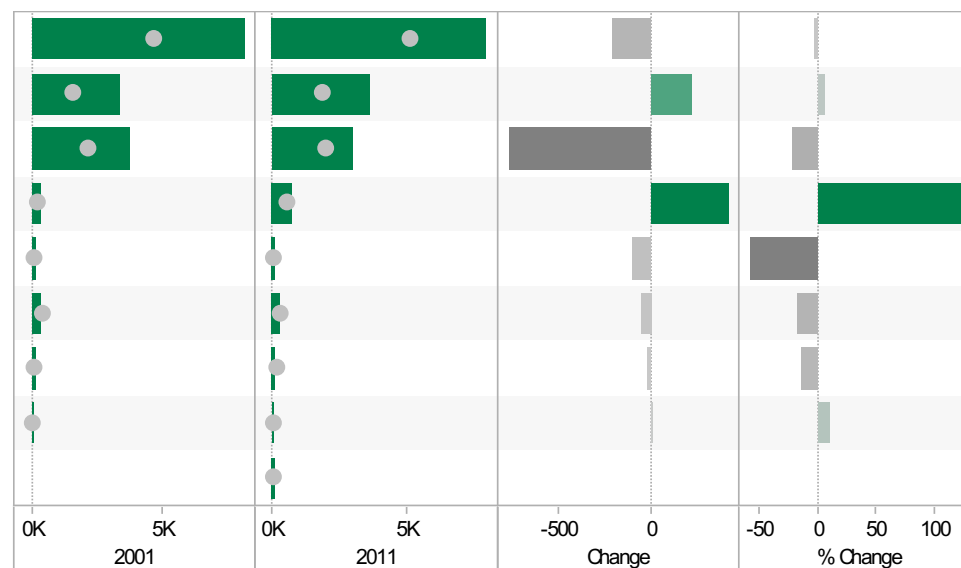
Coloured bar - data for Electoral Division
Grey circle - average for all Leicestershire Electoral Divisions

	2001	2011	Change	% Change
All Households	8,136	7,948	-188	-2
One Family Only; All Aged 65 and Over	1,017	875	-142	-14
One Family Only; Cohabiting Couple; All Children Non-Dependent	15	40	25	167
One Family Only; Cohabiting Couple; Dependent Children	185	202	17	9
One Family Only; Cohabiting Couple; No Children	212	212	0	0
One Family Only; Lone Parent; All Children Non-Dependent	178	275	97	54
One Family Only; Lone Parent; Dependent Children	381	353	-28	-7
One Family Only; Married or Same-Sex Civil Partnership Couple; All Children Non-Dependent	491	673	182	37
One Family Only; Married or Same-Sex Civil Partnership Couple; Dependent Children	1,929	1,724	-205	-11
One Family Only; Married or Same-Sex Civil Partnership Couple; No Children	1,109	951	-158	-14
One Person Household; Aged 65 and Over	1,281	1,134	-147	-11
One Person Household; Other	790	694	-96	-12
Other Household Types; All Aged 65 and Over	27	22	-5	-19
Other Household Types; All Full-Time Students	0	5	5	
Other Household Types; Other	187	302	115	61
Other Household Types; With Dependent Children	334	486	152	46



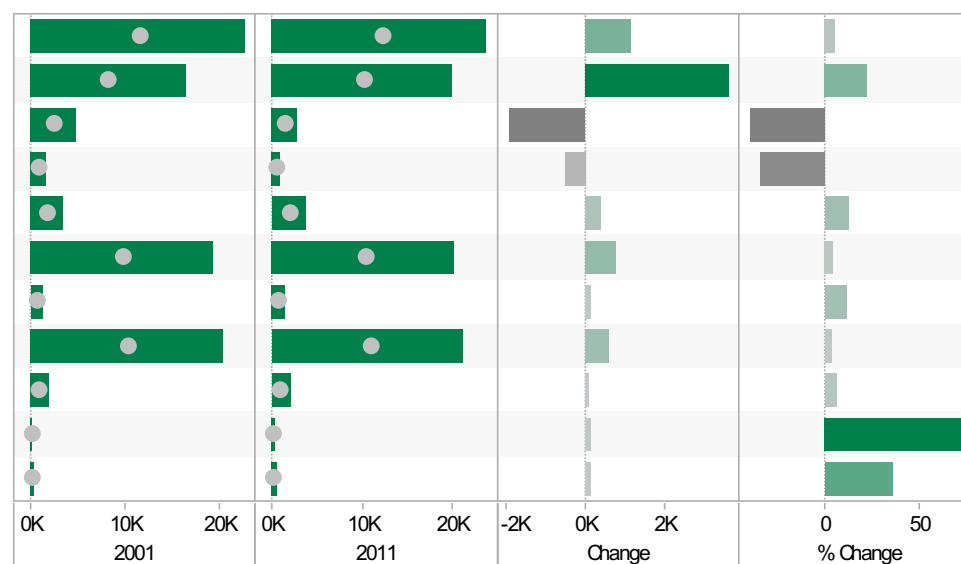
Oadby ED KS402EW: Tenure, 2001-11

	2001	2011	Change	% Change
All Households	8,156	7,948	-208	-3
Owned; Owned Outright	3,398	3,619	221	7
Owned; Owned with a Mortgage or Loan	3,779	3,006	-773	-20
Private Rented; Private Landlord or Letting Agency	323	744	421	130
Private Rented; Other	162	68	-94	-58
Social Rented; Rented from Council (Local Authority)	334	278	-56	-17
Social Rented; Other	124	106	-18	-15
Shared Ownership (Part Owned and Part Rented)	36	40	4	11
Living Rent Free		87		



Oadby ED KS301EW: Health and Provision of Unpaid Care, 2001-11

	2001	2011	Change	% Change
All usual residents	22,679	23,849	1,170	5
Very/ good Health	16,413	20,039	3,626	22
Fair health	4,807	2,854	-1,953	-41
Very/ bad Health	1,459	956	-503	-34
Day-to-day activities limited	3,259	3,659	400	12
Day-to-day activities not limited	19,420	20,190	770	4
Day-to-day activities limited a lot: Age 16 to 64	1,268	1,409	141	11
Provides no unpaid care	20,489	21,107	618	3
Provides 1 to 19 hours unpaid care a week	1,827	1,933	106	6
Provides 20 to 49 hours unpaid care a week	181	320	139	77
Provides 50 or more hours unpaid care a week	360	489	129	36



Oadby ED
KS201EW : Ethnic Group, 2001-11

Coloured bar - data for Electorat Division
Grey circle - average for all Leicestershire Electorat Divisions

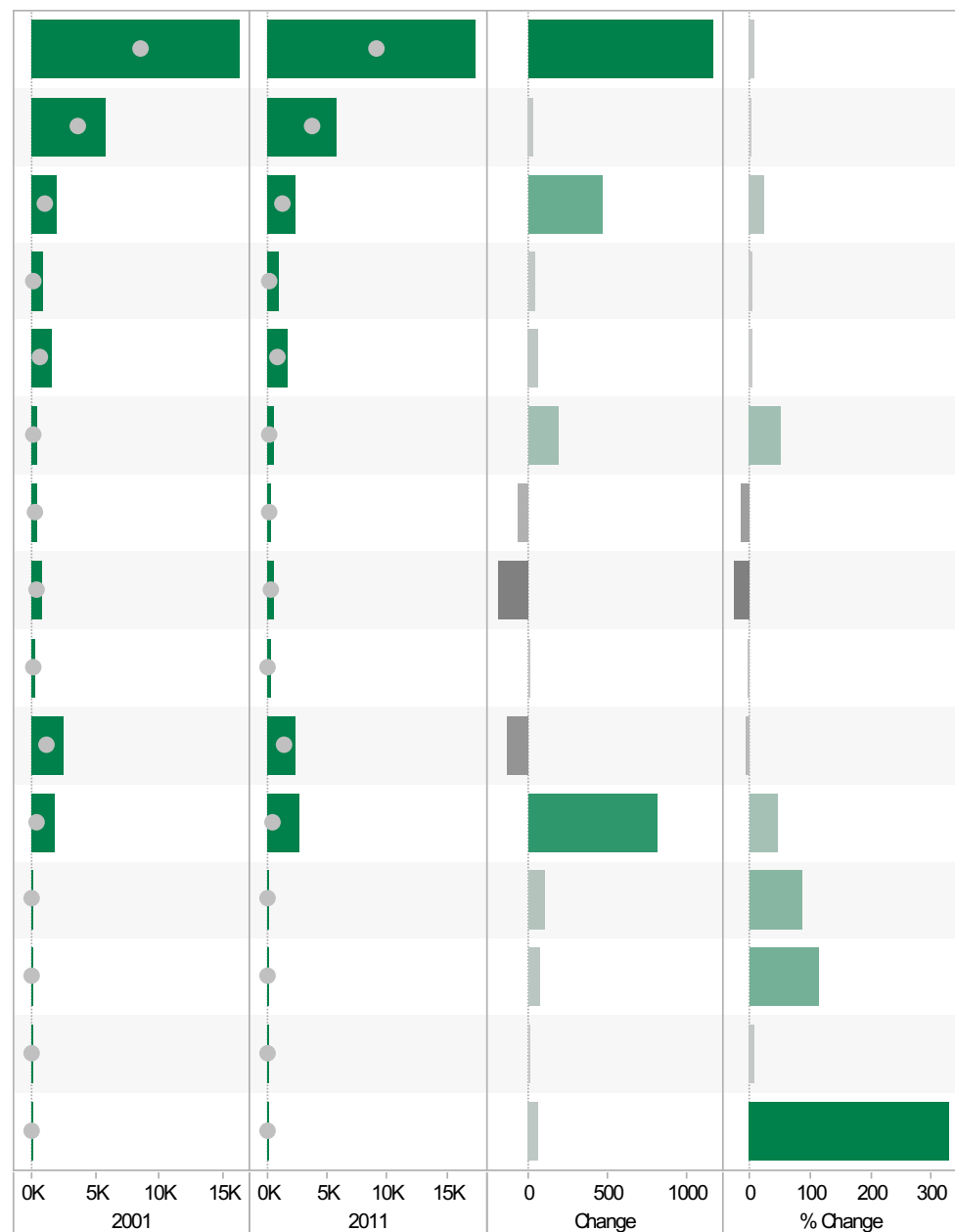
	2001	2011	Change	% Change
All usual residents	22,686	23,849	1,163	5
White: English/Welsh/Scottish/Northern Irish/British	15,431	11,896	-3,535	-23
White: Irish	183	108	-75	-41
White: Other White	386	521	135	35
Asian/Asian British: Bangladeshi	42	84	42	100
Asian/Asian British: Chinese	225	246	21	9
Asian/Asian British: Indian	5,027	7,846	2,819	56
Asian/Asian British: Other Asian	432	780	348	81
Asian/Asian British: Pakistani	320	783	463	145
Black/African/Caribbean/Black British: African	112	221	109	97
Black/African/Caribbean/Black British: Caribbean	114	120	6	5
Black/African/Caribbean/Black British: Other Black	12	31	19	158
Mixed/multiple ethnic group: Other Mixed	74	124	50	68
Mixed/multiple ethnic group: White and Asian	164	308	144	88
Mixed/multiple ethnic group: White and Black African	20	47	27	135
Mixed/multiple ethnic group: White and Black Caribbean	68	127	59	87
Other ethnic group: Any other ethnic group	76	607	531	699



Oadby ED
KS601EW : Economic Activity, 2001-11

Coloured bar - data for Ectoral Division
Grey circle - average for all Leicestershire Ectoral Divisions

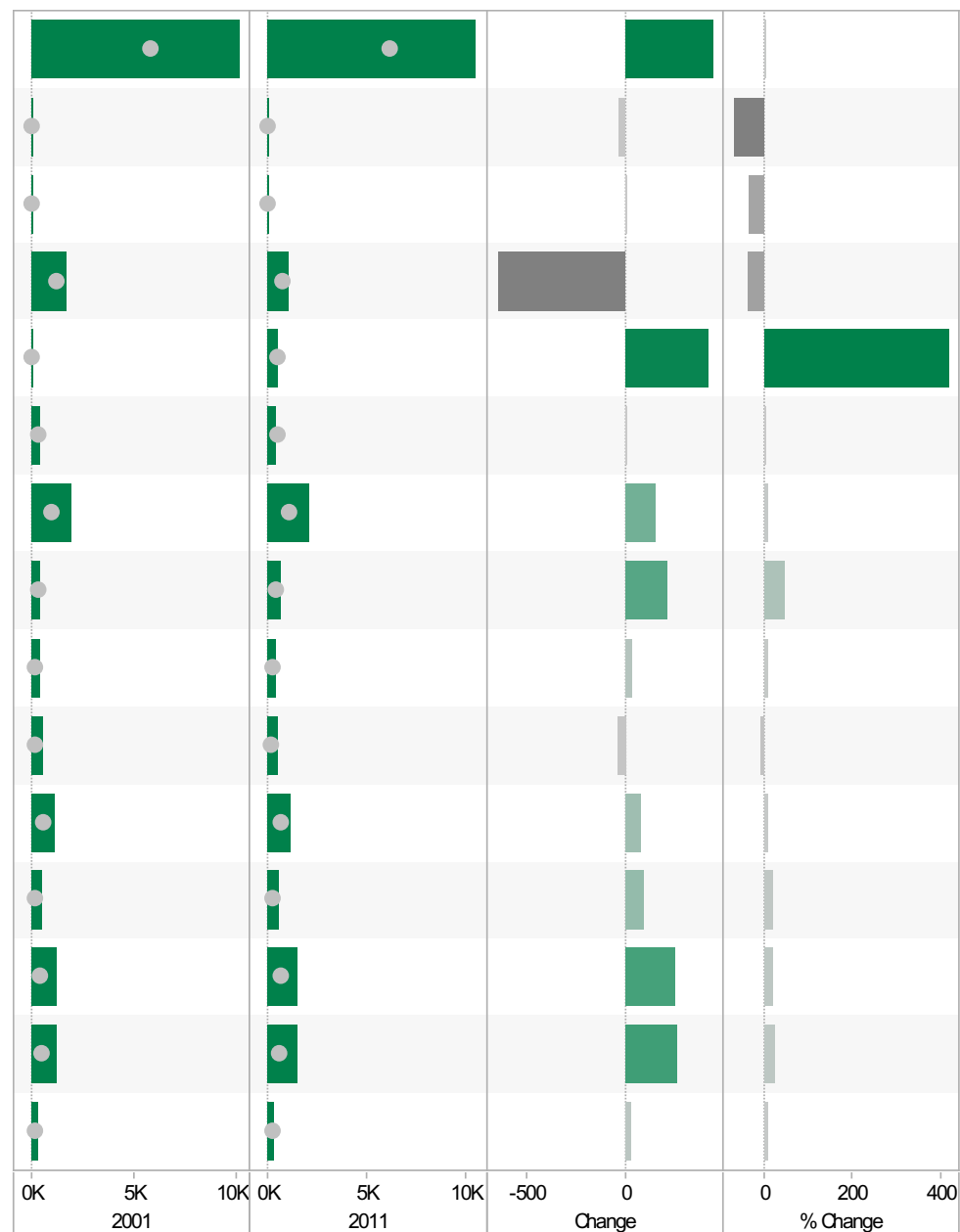
	2001	2011	Change	% Change
All usual residents aged 16 and over	16,276	17,444	1,168	7
Economically active: Employee: Full-time	5,791	5,819	28	0
Economically active: Employee: Part-time	1,961	2,426	465	24
Economically active: Full-time student	880	921	41	5
Economically active: Self-employed	1,620	1,675	55	3
Economically active: Unemployed	369	553	184	50
Economically inactive: Long-term sick or disabled	423	357	-66	-16
Economically inactive: Looking after home or family	736	537	-199	-27
Economically inactive: Other	285	277	-8	-3
Economically inactive: Retired	2,445	2,302	-143	-6
Economically inactive: Student (including full-time students)	1,766	2,577	811	46
Long-term unemployed	114	212	98	86
Unemployed: Age 16 to 24	65	139	74	114
Unemployed: Age 50 and over	111	120	9	8
Unemployed: Never worked	18	77	59	328



Oadby ED
KS605EW : Industry, 2001-11

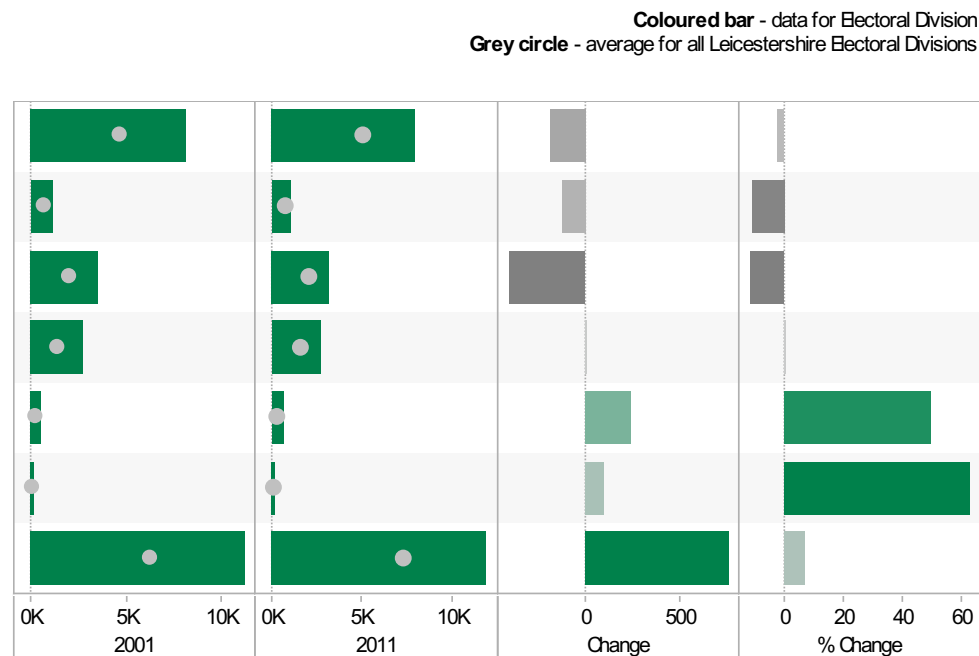
Coloured bar - data for Ectoral Division
Grey circle - average for all Leicestershire Ectoral Divisions

	2001	2011	Change	% Change
All usual residents aged 16 and over in employment	10,140	10,580	440	4
A Agriculture, forestry and fishing	45	14	-31	-69
B Mining and quarrying	9	6	-3	-33
C Manufacturing	1,739	1,092	-647	-37
D, F Electricity, gas, steam, air conditioning supply, water and sewerage	100	517	417	417
F Construction	406	404	-2	0
G Wholesale and retail trade; repair of motor vehicles and motor cycles	1,921	2,076	155	8
H, J Transport, storage, information and communication	467	681	214	46
I Accommodation and food service activities	406	442	36	9
K Financial and insurance activities	554	517	-37	-7
L, M, N Real estate activities Professional, scientific and technical activities Administrative and support service activities	1,139	1,212	73	6
O Public administration and defence; compulsory social security	527	618	91	17
P Education	1,225	1,476	251	20
Q Human health and social work activities	1,268	1,532	264	21
R, S, T, U Other	334	359	25	7



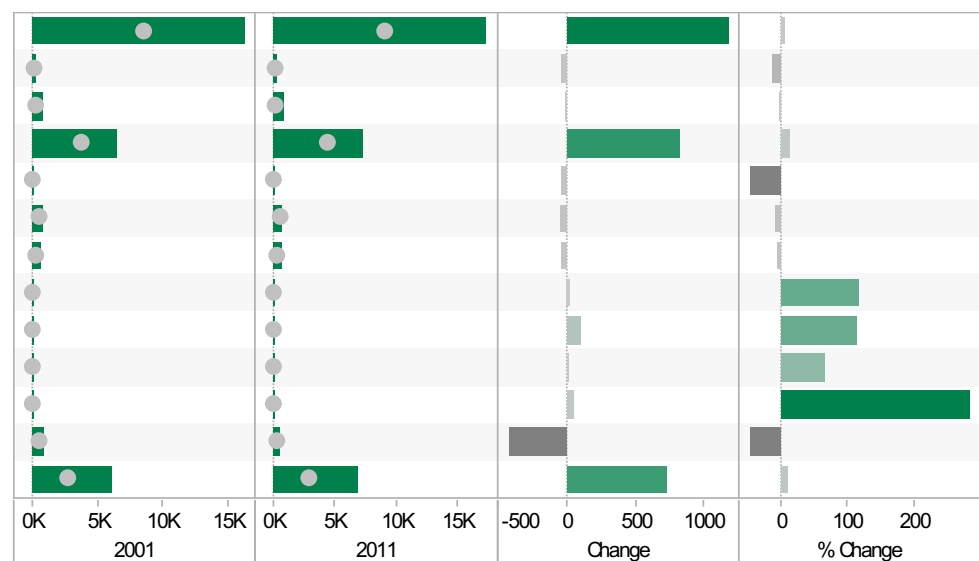
Oadby ED KS404EW : Car and Van Availability, 2001-11

	2001	2011	Change	% Change
All Households	8,140	7,948	-192	-2
No Cars or Vans in Household	1,178	1,053	-125	-11
1 Car or Van in Household	3,574	3,164	-410	-11
2 Cars or Vans in Household	2,748	2,755	7	0
3 Cars or Vans in Household	486	726	240	49
4 or More Cars or Vans in Household	154	250	96	62
All Cars or Vans in the Area	11,175	11,931	756	7



Oadby ED QS701EW : Method of Travel to Work, 2001-11

	2001	2011	Change	% Change
All Usual Residents Aged 16 to 74	16,271	17,444	1,173	7
Bicycle	254	224	-30	-12
Bus, Minibus or Coach	830	822	-8	-1
Driving a Car or Van	6,490	7,319	829	13
Motorcycle, Scooter or Moped	70	39	-31	-44
On Foot	733	691	-42	-6
Passenger in a Car or Van	689	656	-33	-5
Taxi	18	39	21	117
Train	91	194	103	113
Underground, Metro, Light Rail, Tram	18	30	12	67
Other Method of Travel to Work	16	61	45	281
Work Mainly at or From Home	926	505	-421	-45
Not in Employment	6,136	6,864	728	12



Research & Insight Team
Strategy, Partnerships & Communities
Chief Executive's Department
Leicestershire County Council
County Hall
Glenfield
Leicester
LE3 8RA

ri@leics.gov.uk
www.lsr-online.org

If you require information contained in this leaflet in another version e.g. large print, Braille, tape or alternative language please telephone: 0116 305 6803, Fax: 0116 305 7271 or Minicom: 0116 305 6160.

જો આપ આ માહિતી આપની ભાષામાં સમજવામાં થોડી મદદ ઇચ્છતાં હો તો 0116 305 6803 નંબર પર ફોન કરશો અને અમે આપને મદદ કરવા અવસ્થા કરીશું.

જેકર તુહાનું ઇસ જાતકારી નું સમજાવ દિવસ રુઝ મદદ રાહીદી હૈ તાં કિરપા કરકે 0116 305 6803 નંબર કે ફોન કરે અઝે અસીં તુહાડી મદદ લઈ કિસે દા પૂર્ણ કર દવાંગે।

এই তথ্য নিজের ভাষায় বুঝার জন্য আপনার যদি কোন সাহায্যের প্রয়োজন হয়, তবে 0116 305 6803 এই নম্বরে ফোন করলে আমরা উপযুক্ত ব্যক্তির ব্যবস্থা করবো।

اگر آپ کو یہ معلومات سمجھنے میں کچھ مدد درکار ہے تو براہ مہربانی اس نمبر پر کال کریں 0116 305 6803 اور ہم آپ کی مدد کے لئے کسی کا انتظام کر دیں گے۔

假如閣下需要幫助，用你的語言去明白這些資訊，請致電 0116 305 6803，我們會安排有關人員為你提供幫助。

Jeżeli potrzebujesz pomocy w zrozumieniu tej informacji w Twoim języku, zadzwoń pod numer 0116 305 6803, a my Ci dopomożemy.