

# Unemployment Bulletin

## November 2009



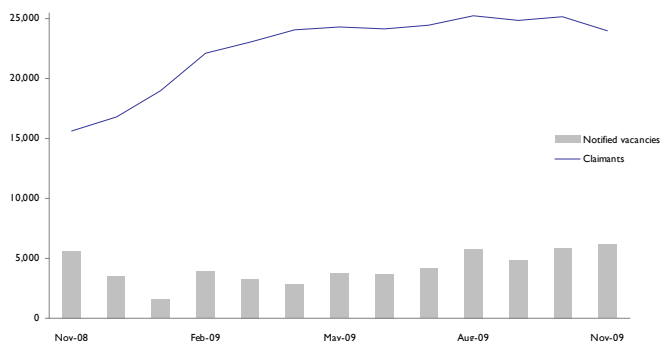
### Recession Summary

This additional front page provides a monthly snapshot of the economic downturn at a local level. JSA claimants and vacancies are used to exemplify recent change and trends over the past 12 months. Following tables have also been adapted to include monthly and annual comparisons.

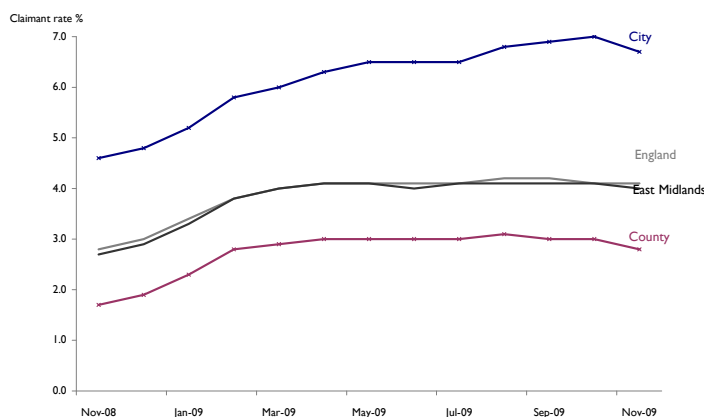
### Key points

- There were 23,985 people claiming JSA benefits in the sub-region in November 2009; compared to 25,222 in October 2009 and 15,632 in November 2008.
- The JSA claimant numbers in November 2009 decreased by 590 in the City to a rate of 6.7%. In the County, claimants decreased by 647 to a rate of 2.8%. Claimant rates decreased in all districts.
- Lutterworth ward saw the largest monthly increase in JSA rates in the County (+ 21 claimants). No wards in the City saw claimant increases this month.
- In the City, Evington and Abbey wards saw the largest claimant decreases this month (-38 claimants and -52 claimants respectively). New Parks ward now has the highest claimant rate of 9%
- In the sub-region, there were 6,184 notified vacancies in November 2009 compared to 5,863 the previous month. There were 4,232 unfilled live vacancies in November. This is a ratio of 5.7 claimants per unfilled vacancy, compared to 5.2 the previous month.
- NEET rates increased this month in the City but decreased in the County. 7.7% of 16-18 year olds in the City and 3.9% in the County were NEET in November 2009, lower than rates for November last year.

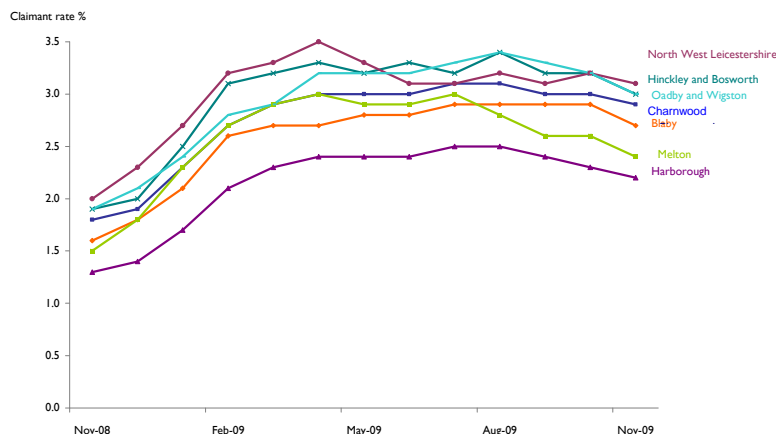
JSA claimants and new notified vacancies in Leicester and Leicestershire  
November 08 to November 09



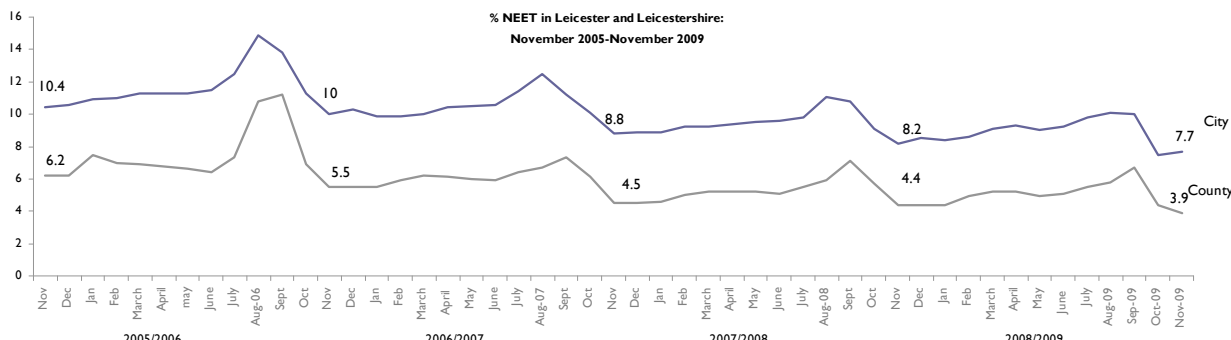
JSA Claimant Rate  
November 2008 to November 2009



JSA claimant rates in Leicestershire districts  
November 2008 to November 2009



% NEET in Leicester and Leicestershire:  
November 2005-November 2009



# Unemployment Bulletin

## November 2009



### Introduction

The Unemployment Bulletin provides a monthly update of the latest unemployment and benefit data for Leicester and Leicestershire. The data is sourced from Nomis ([www.nomisweb.co.uk](http://www.nomisweb.co.uk)) which contains data from the Office for National Statistics, the Department of Work and Pensions and other official sources. Some figures have been calculated by Leicestershire County Council and where this is the case it is stated in the source.

There are a number of ways of measuring unemployment and this bulletin mainly focuses on the Claimant Count which is a measure of the number or proportion of people receiving Job Seekers Allowance (JSA) and National Insurance Credits at Jobcentre Plus local offices. This is not an official measure of unemployment but it is the only indicative statistic available for areas smaller than Local Authorities.

Official estimates of unemployment in the UK are obtained from the Labour Force Survey (LFS) using the internationally agreed International Labour Organisation (ILO) definition. The ILO definition is based on the number of people without jobs who are looking for work and are available to start work (and includes people whether or not they are eligible to receive unemployment related benefits). The LFS unemployment figures which are subject to sampling differences are not reliable at small areas. The Claimant Count is released on a monthly basis and is available down to ward level, so is used as a more current indicator of unemployment levels. Using the two sources together provides a more comprehensive picture of the labour market.

There is a large degree of overlap between the Claimant Count and Unemployment (LFS ILO definition) although the latter figures are generally higher. People who are not claimants can appear among the unemployed if they are not entitled to unemployment related benefits. Similarly, claimants of unemployment related benefits may not appear in the measure of unemployment if they stated that they are not seeking or are not available to start work.

Tables 1 to 7 use Claimant Count data and Table 8 shows the Unemployment (LFS ILO definition) figures.

**Table 1: Resident-Based Claimant Count (JSA) Proportions: November 2009**

Area	Claimant Count Proportion (working age)			Total Claimant Count	Change since last month	Change since last year	Previous months Proportion (change)	Previous years Proportion (change)
	Total	Male	Female					
Leicester Shire	4.1%	5.5%	2.4%	23,985	-1,237	8,353	4.3%(-0.2)	2.7%(1.4)
Leicestershire County	2.8%	3.7%	1.7%	11,177	-647	4,324	3.0%(-0.2)	1.7%(1.1)
Leicester City	6.7%	9.3%	3.9%	12,808	-590	4,029	7.0%(-0.3)	4.6%(2.1)
Rutland	1.7%	2.0%	1.2%	378	10	190	1.6%(0.1)	0.8%(0.9)
East Midlands	4.0%	5.5%	2.3%	109,902	-1,696	37,178	4.1%(-0.1)	2.7%(1.3)
UK	4.1%	5.7%	2.4%	1,569,446	-13,109	513,301	4.2%(-0.1)	2.8%(1.3)

Source: Office for National Statistics (Nomis)

Note: Leicester Shire comprises the areas of Leicestershire County and Leicester City only.

National Statistics will release the December 2009 unemployment figures on Wednesday 20th January 2010.

Archived Unemployment Bulletins and other reports produced by Leicestershire County Council are available on the Leicestershire Statistics and Research Online website, [www.lsr-online.org](http://www.lsr-online.org)

**Table 2: Resident-Based Claimant Count (JSA) Proportions: November 2009.**

Districts	Claimant Count Proportion (working age)	Total Claimant Count	Total last month	Total last year	Previous months Proportion (change)	Previous years Proportion (change)
NW Leicestershire	3.1%	1,704	1,746	1,093	3.2%(-0.1)	2.0%(1.1)
Oadby & Wigston	3.0%	1,047	1,122	667	3.2%(-0.2)	1.9%(1.1)
Hinckley & Bosworth	3.0%	1,957	2,075	1,201	3.2%(-0.2)	1.6%(1.4)
Charnwood	2.9%	3,135	3,296	1,896	3.0%(-0.1)	1.8%(1.1)
Blaby	2.7%	1,512	1,650	918	2.9%(-0.2)	1.6%(1.1)
Melton	2.4%	719	776	447	2.6%(-0.2)	1.5%(0.9)
Harborough	2.2%	1,103	1,159	631	2.3%(-0.1)	1.3%(0.9)

Source: Office for National Statistics (Nomis)

**Table 3: Resident-Based Claimant Count (JSA) Proportions: in Market Towns; November 2009.**

Market Towns	Claimant Count Proportion (working age)	Total Claimant Count	Previous months Proportion (change)	Previous years Proportion (change)
Hinckley (inc. Burbage & Earl Shilton)	3.5%	1,215	3.8%(-0.3)	2.3%(1.2)
Coalville	3.5%	764	3.6%(-0.1)	2.6%(0.9)
Loughborough (including Hathern)	3.2%	1,403	3.0%(0.2)	2.3%(0.9)
Wigston	3.0%	451	3.2%(-0.2)	1.9%(1.1)
Melton Mowbray	2.9%	469	3.3%(-0.4)	1.8%(1.1)
Ashby de la Zouch	2.6%	182	2.8%(-0.2)	1.5%(1.1)
Oadby	2.5%	352	2.7%(-0.2)	1.7%(0.8)
Market Harborough	2.5%	324	2.7%(-0.2)	1.8%(0.7)
Oakham	1.8%	114	1.8%(0.0)	0.8%(1.0)

Source: Office for National Statistics (Nomis); Market Town geographies defined by Leicestershire County Council and figures calculated using ONS Claimant Count (JSA) figures and denominators

**Table 4: Claimant Count (JSA) by Age and Duration; November 2009.**

Area	18-24 years old				Over 25 years old			
	Up to 6 months	6-12 months	13-18 months	Over 18 months	Up to 6 months	6-12 months	13-18 months	Over 18 months
Blaby	355	95	20	0	650	250	95	50
Charnwood	750	185	30	5	1,285	545	210	100
Harborough	260	50	10	0	530	165	55	30
Hinckley & Bosworth	455	120	15	0	840	330	125	65
Melton	170	40	10	0	310	125	45	20
NW Leicestershire	415	80	20	0	770	250	110	50
Oadby & Wigston	255	70	10	0	420	165	80	40
Leicester City	2,795	890	120	15	4,605	2,385	1,140	800
Leicestershire County	2,655	640	115	10	4,805	1,830	725	350
Rutland	100	20	0	0	175	55	15	10
Leicester Shire	5,450	1,530	235	25	9,410	4,215	1,865	1,155

Source: Office for National Statistics (Nomis) Note: Figures are rounded to the nearest 5.

## Claimant Count (JSA) by Ethnicity

JSA benefit data have been published by the Office for National Statistics (ONS) for many years as a key labour market indicator. In November 2006 ONS published JSA claimant data by ethnicity for the first time. The data is available for the detailed ethnic groups down to Local Authority level and is backdated to April 2005.

JSA claimant data by ethnicity has been included in Tables 5, 6, and 7 of this bulletin. The JSA data by ethnicity used in these table is a month in arrears of the other Claimant Count data in the other tables in the bulletin.

For more information, please see; [www.nomisweb.co.uk/articles/news/files/DWP\\_Ethnicity\\_JSA.pdf](http://www.nomisweb.co.uk/articles/news/files/DWP_Ethnicity_JSA.pdf)

**Table 5: Claimant County (JSA) by Ethnicity; October 2009.**

Area	White	Mixed	Black or Black British	Asian or Asian British	Chinese or Other Ethnic Group	'Non White'	Prefer not to say / Unknown
Blaby	1,385	25	25	115	15	180	85
Charnwood	2,715	40	25	270	55	390	190
Harborough	1,020	10	5	35	5	55	80
Hinckley & Bosworth	1,700	15	5	20	15	55	325
Melton	740	5	5	5	0	10	25
NW Leicestershire	1,640	10	5	5	0	25	80
Oadby & Wigston	810	25	20	210	10	265	50
Leicester City	7,020	385	1,190	3,645	355	5,575	805
Leicestershire County	10,015	135	90	655	95	975	830
Leicester Shire	17,035	520	1,275	4,305	450	6,550	1,640
East Midlands	91,325	1,895	3,990	6,425	1,230	13,540	6,465
Great Britain	1,202,805	24,970	85,045	80,635	26,695	217,345	104,555

Note: Figures are rounded to the nearest 5.

Sources: Office for National Statistics (Nomis)

**Table 6: Resident-based Claimant Count (JSA) Proportions by Ethnicity; October 2009.**

Area	White	Mixed	Black or Black British	Asian or Asian British	Chinese or Other Ethnic Group	'Non White'
Blaby	1.6%	2.3%	3.1%	2.9%	2.5%	2.8%
Charnwood	1.9%	2.1%	1.8%	2.5%	1.9%	2.3%
Harborough	1.3%	1.3%	1.3%	1.8%	1.3%	1.5%
Hinckley & Bosworth	1.7%	1.7%	1.3%	0.8%	3.0%	1.3%
Melton	1.6%	1.7%	2.5%	0.8%	0.0%	0.8%
NW Leicestershire	1.9%	1.4%	1.3%	0.4%	0.0%	0.9%
Oadby & Wigston	1.7%	3.1%	2.5%	2.8%	1.7%	2.7%
Leicester City	3.9%	5.4%	9.6%	4.3%	9.3%	5.2%
Leicestershire County	1.7%	2.1%	2.1%	2.3%	1.8%	2.2%
Leicester Shire	2.2%	3.9%	7.6%	3.8%	4.9%	4.3%
East Midlands	2.3%	3.4%	6.9%	3.2%	3.2%	3.8%

Source: Office for National Statistics (Nomis). Proportions calculated by Leicestershire County Council using ONS mid-2005 experimental estimates of population by ethnic group, published October 2007

**Table 7: Claimant Count (JSA) by Ethnicity, Gender and Age; October 2009.**

	Total	Previous month	Previous year	Male				Female			
				Aged <18	Aged 18-24	Aged 25-49	Aged 50+	Aged <18	Aged 18-24	Aged 25-49	Aged 50+
Leicester Shire											
'White'	17,035	16,780	9,430	45	3,665	6,540	2,150	25	1,730	2,115	765
'Non-white'	6,555	6,447	4,030	5	1,190	2,630	650	5	720	1,005	350
Leicester City											
'White'	7,025	6,825	4,320	30	1,560	2,845	775	20	690	835	270
'Non-white'	5,570	5,475	3,540	5	1,005	2,285	545	0	600	830	300
Leicestershire County											
'White'	10,015	9,960	5,105	20	2,105	3,695	1,370	5	1,045	1,280	495
'Non-white'	975	985	495	0	185	345	105	0	120	170	50

Source: Office for National Statistics (Nomis)

### Unemployment: International Labour Organisation (ILO) Definition

Official estimates of unemployment in the UK are obtained from the Labour Force Survey (LFS) using the internationally agreed International Labour Organisation (ILO) definition. The ILO definition is based on the number of people without jobs who are looking for and available to start work. The LFS unemployment figures which are subject to sampling differences are not available for smaller areas. The Claimant Count is released on a monthly basis and is available down to ward level, so is used as a more current indicator of unemployment levels.

**Table 8: Unemployment Rates: ILO Definition; April 2008 - March 2009**

Area	April 2008 - March 2009		April 2007 - March 2008	
	ILO Unemployment Rate (working age)	Total Persons ILO Unemployed	ILO Unemployment Rate (working age)	Total Persons ILO Unemployed
United Kingdom	6.4%	1,891,400	5.3%	1,566,700
East Midlands	6.6%	144,800	5.4%	117,300
Leicester Shire	7.3%	34,400	6.1%	28,500
Leicester City	12.8%	17,800	11.2%	15,800
Leicestershire County	5.0%	16,700	3.9%	12,700

Source: Labour Force Survey/Annual Population Survey, Office for National Statistics (Nomis)

### Other Department for Work and Pensions Benefits Statistics

Job Seekers Allowance is one of a number of types of benefit which is related to worklessness, and recipients of this benefit constitute the most visible group of people who are out of work. However, many people have been diverted away from Job Seekers Allowance on to other benefits, the largest number being onto Incapacity Benefit. Nationally, the number of people claiming Incapacity Benefit is over three times the number of people out of work and claiming JSA.

The government recently published a Green Paper on welfare reform in which it is argued that to meet the goal of reaching a UK employment rate of 80%, more people on inactive benefits must be moved into work, particularly those who have been on benefits for a long time.

One method of classifying benefit claimants is by breaking them down into statistical groups. This presents the main reason why an individual is claiming benefit. Benefits are arranged hierarchically and claimants are assigned to the top most benefit which they receive. In this way each claimant only appears once, even though they may claim more than one benefit - the total number of working-age people who are claiming one or more key benefits is often used as a proxy for worklessness.

These figures are provided by the Department for Work and Pensions and are updated quarterly.

**Table 9: Working-age people claiming one or more key DWP benefit by duration; May 2009**

Area	Number	All benefits			Duration (proportion of all claimants)				
		Rate	Previous year number	Previous year rate	<6mths	6mths - 1yr	1yr - 2yrs	2yrs - 5yrs	+5yrs
Blaby	5,440	9.6	4,390	7.7	30%	10%	8%	15%	36%
Charnwood	11,100	10.2	9,100	8.5	30%	11%	10%	15%	35%
Harborough	4,040	8.2	3,200	6.5	31%	10%	8%	14%	36%
Hinckley & Bosworth	7,260	11.2	5,780	8.9	30%	11%	9%	15%	34%
Melton	2,870	9.6	2,210	7.4	32%	11%	9%	13%	35%
NW Leicestershire	7,070	12.8	5,970	10.8	27%	10%	9%	15%	39%
Oadby and	3,740	10.8	3,090	9.0	30%	11%	10%	14%	34%
Leicester City	41,050	21.4	36,140	18.9	27%	11%	11%	16%	36%
Leicestershire County	41,510	10.4	33,730	8.5	30%	10%	9%	15%	36%
Rutland	1,550	6.8	1,270	5.6	28%	10%	10%	15%	37%
East Midlands	411,900	15.0	355,170	13.0	26%	11%	9%	15%	39%
Great Britain	5,818,730	15.7	5,124,110	13.9	25%	10%	9%	15%	40%

Source: Department of Work and Pension (Nomis)

**Table 10: Benefit Claimants by Statistical Group - Main reason for claiming benefit; May 2009**

Statistical group	East Midlands		Leicester City		Leicestershire County	
	Number	Rate	Number	Rate	Number	Rate
Employment and Support Allowance & Incapacity Benefits	179,470	6.5%	16,050	8.4%	16,690	4.2%
Job Seeker	106,600	3.9%	12,130	6.3%	11,530	2.9%
Lone Parent	46,740	1.7%	5,870	3.1%	3,930	1.0%
Carer	31,490	1.1%	3,010	1.6%	3,500	0.9%
Disabled	28,890	1.1%	2,110	1.1%	3,480	0.9%
Others on income related benefit	12,140	0.4%	1,430	0.7%	1,370	0.3%
Bereaved	6,570	0.2%	450	0.2%	1,020	0.3%
Total	411,900	15.0%	41,050	21.4%	41,510	10.4%

Source: Department of Work and Pension (Nomis)

Note: Benefits are arranged hierarchically and claimants are assigned to the top most benefit they receive. Each claimant appears once only, even though some claim more than one benefit, permitting the estimation of the total number of people claiming one or more benefits. The Statistical Group hierarchy is a) Jobseeker b) ESA & Incapacity benefits c) Lone parents d) Carers e) Other income-related benefits f) Disabled g) Bereaved h) Housing Benefit i) receiving State Pension only. Thus a person who is a lone parent and receives Incapacity Benefit would be classified as receiving incapacity benefits. This is only one of the possible ways in which claimants could be classified and alternative classifications are possible.

For more information about DWP statistics and research [www.dwp.gov.uk/asd/data\\_guide.asp](http://www.dwp.gov.uk/asd/data_guide.asp)

# Definitions

**Claimant Count** - the count of claimants of unemployment related benefits is based on the administrative records of people claiming these benefits. Since October 1996 this has been the number of people claiming Job Seekers Allowance (JSA). The publication of claimant count figures is normally five weeks after the date to which they refer. The claimant count is accurate down to very small geographic areas and is unaffected by sampling variability since it is a 100% count. This means it can be used as an indicator of those without work down to small areas.

**Resident-based Claimant Count Proportions** - express the number of claimants resident in an area as a percentage of the working age population resident in that area. Claimant count rates can also be expressed as a proportion of the workforce jobs in an area, however in smaller areas using workforce job-based rates can cause distortions in the rates caused by commuting patterns. Using resident-based proportions avoids this distortion.

**Unemployment** (LFS ILO definition) - The definition of unemployment is internationally agreed and recommended by the International Labour Organisation (ILO) - an agency of the United Nations. Many countries use this definition. By this definition unemployed people are:

- without a job, want a job, have actively sought work in the last 4 weeks and are available to start work in the next 2 weeks, or
- out of work, have found a job and are waiting to start it in the next 2 weeks

**Unemployment Rate** (LFS ILO definition) - expresses the number of unemployed people resident in an area as a percentage of the economically active working age population resident in that area.

**Labour Force Survey** - The Labour Force Survey is a random sample survey which is carried out throughout the UK. It is conducted every three months using around 53,000 households. The survey collects information about the personal circumstances and work of everyone living in these households. The Office for National Statistics (ONS) uses the Labour Force Survey as its source for unemployment data. Unemployment is measured through questions asked in the survey and not by interviewing everybody in the country. Answers are then weighted to represent everyone. As with any sample survey there is sampling variability and this is high for areas below regional level. Therefore, the figures are not reliable for small areas. Each month the ONS releases statistics on the number of people who are unemployed in the United Kingdom for the latest available 3-month rolling period.

**Economically Active** - people aged 16 or over who are either in employment or are unemployed (LFS ILO definition)

**Economically Inactive** - people aged 16 or over who are neither in employment nor unemployed (LFS ILO definition) - e.g. they do not have a job and do not want a job. This group includes, for example, those who are looking after the family and/or home or retired.

**Working Age Population** - Working age is defined as 16-64 for males and 16-59 for females. The working age population figures are derived from mid-year 2006 population estimates.

**Benefit Claimants Statistical Group** - Benefits are arranged hierarchically and claimants are assigned to the top most benefit they receive. Each claimant appears once only, even though some claim more than one benefit, permitting the estimation of the total number of people claiming one or more benefits. The Statistical Group hierarchy is a) Jobseeker b) Incapacity benefits c) Lone parents d) Carers e) Other income-related benefits f) Disabled g) Bereaved h) Housing Benefit i) receiving State Pension only. Thus a person who is a lone parent and receives Incapacity Benefit would be classified as receiving incapacity benefits. The total number of working-age people who are claiming one or more key benefits is often used as a proxy for worklessness. This is only one of the possible ways in which claimants could be classified and alternative classifications are possible.

For further information on unemployment statistics please refer to the document entitled 'How exactly is unemployment measured?' which is produced by the Office for National Statistics:

[www.statistics.gov.uk/downloads/theme\\_labour/unemployment.pdf](http://www.statistics.gov.uk/downloads/theme_labour/unemployment.pdf)

For further information about Department of Work and Pensions statistics and research:

[www.dwp.gov.uk/asd/data\\_guide.asp](http://www.dwp.gov.uk/asd/data_guide.asp)

For enquiries about the Unemployment Bulletin please contact Joelle Bradly on 0116 305 7341

**Claimant Count (JSA) Ward Data  
November 2009**

			Blaby District					
			Total	Last month	Last year	Male %	Female %	Total %
Code	Wards (resident-based proportions)							
1	31UBFY	Blaby South	84	92	56	4.9	1.1	3.1
2	31UBFZ	Cosby with South Whetstone	57	66	32	2.3	1.5	1.9
3	31UBGA	Countesthorpe	94	94	42	2.8	1.7	2.3
4	31UBGB	Croft Hill	31	30	20	2.5	2.2	2.4
5	31UBGC	Ellis	70	81	48	3.2	1.2	2.2
6	31UBGD	Enderby and St. John's	97	97	55	5.6	1.7	3.7
7	31UBGE	Fairstone	75	80	46	4.2	1.4	2.9
8	31UBGF	Forest	89	106	48	2.6	1.6	2.1
9	31UBGG	Millfield	52	57	34	5.5	2.5	4.1
10	31UBGH	Muxloe	53	59	29	3.0	1.4	2.2
11	31UBGJ	Narborough and Littlethorpe	82	85	48	3.4	1.4	2.5
12	31UBGK	Normanton	33	33	12	1.9	2.2	2.1
13	31UBGL	North Whetstone	86	92	52	3.5	1.8	2.7
14	31UBGM	Pastures	71	72	37	2.6	1.9	2.3
15	31UBGN	Ravenhurst and Fosse	175	195	104	5.3	2.4	3.9
16	31UBGP	Saxondale	130	145	82	3.1	2.0	2.7
17	31UBGQ	Stanton and Flamville	100	114	80	2.7	1.8	2.3
18	31UBGR	Winstanley	133	152	93	3.6	2.2	3.0
		Blaby District	1,512	1,650	918	3.4	1.8	2.7

# These figures are suppressed as value is 1 or 2.

Source: Office for National Statistics

If you require further information please contact Joelle Bradly, Policy, Performance & Research, Chief Executive's Department, Leicestershire County Council on 0116 3055883.



**Claimant Count (JSA) Ward Data  
October 2009**

**Charnwood Borough**

Code	Wards (resident-based proportions)	Total	Last month	Last year	Male %	Female %	Total %
1	31UCGG Anstey	126	122	66	4.8	1.8	3.4
2	31UCGH Barrow and Sileby West	91	103	53	2.9	2.0	2.5
3	31UCGJ Birstall Wanlip	80	83	41	3.2	1.9	2.6
4	31UCGK Birstall Watermead	109	134	60	4.2	1.1	2.8
5	31UCGL East Goscote	43	44	25	3.3	1.2	2.3
6	31UCGM Forest Bradgate	34	39	16	2.2	0.9	1.7
7	31UCGN Loughborough Ashby*	116	136	75	2.5	1.1	1.9
8	31UCGP Loughborough Dishley and Hathern*	123	129	82	4.4	1.6	3.1
9	31UCGQ Loughborough Garendon*	109	113	80	3.7	1.5	2.7
10	31UCGR Loughborough Hastings*	264	276	163	9.3	3.1	6.4
11	31UCGS Loughborough Lemyngton*	233	248	153	7.3	2.7	5.2
12	31UCGT Loughborough Nanpantan*	32	32	21	0.9	0.7	0.8
13	31UCGU Loughborough Outwoods*	72	75	46	2.8	1.4	2.2
14	31UCGW Loughborough Shelthorpe*	212	221	124	7.0	1.8	4.4
15	31UCGX Loughborough Southfields*	113	113	70	3.0	1.4	2.3
16	31UCGY Loughborough Storer*	129	144	84	3.1	1.8	2.5
17	31UCGZ Mountsorrel	156	158	90	5.1	1.7	3.4
18	31UCHA Queniborough	30	30	23	2.6	0.8	1.7
19	31UCHB Quorn and Mountsorrel Castle	98	97	57	3.1	1.9	2.6
20	31UHC Rothley and Thurcaston	61	66	39	2.5	0.8	1.7
21	31UCHD Shepshed East	127	123	77	3.9	1.6	2.8
22	31UCHE Shepshed West	111	119	69	3.7	1.4	2.6
23	31UCHF Sileby	174	172	84	5.3	2.0	3.7
24	31UCHG Syston East	100	106	59	3.7	1.6	2.7
25	31UCHH Syston West	124	126	73	4.2	1.9	3.1
26	31UCHJ The Wolds	32	33	13	1.8	1.7	1.7
27	31UCHK Thurmaston	214	230	135	5.4	1.9	3.8
28	31UACL Wreake Villages	22	24	18	1.9	0.5	1.2
	Charnwood Borough	3,135	3,296	1,896	3.9	1.6	2.9
	*Loughborough including Hathern	1,403	1,487	898	4.4	1.8	3.2

# These figures are suppressed as value is 1 or 2.

Market Town geographies defined by Leicestershire County Council and figures calculated using ONS Claimant Count (JSA) figures and denominators.

Source: Office for National Statistics

If you require further information please contact Joelle Bradly, Policy, Performance & Research, Chief Executive's Department, Leicestershire County Council on 0116 3055883.

**Claimant Count (JSA) Ward Data  
October 2009**

**Harborough District**

Code	Wards (resident-based proportions)	Harborough District			Male	Female	Total
		Total	Last month	Last year	%	%	%
1	31UDGD Billesdon	13	12	7	1.5	1.0	1.2
2	31UDGE Bosworth	33	35	16	3.1	1.2	2.3
3	31UDGF Broughton Astley - Astley	26	31	16	2.2	1.3	1.8
4	31UDGG Broughton Astley - Broughton	30	30	17	2.2	1.2	1.7
5	31UDGH Broughton Astley - Primethorpe	30	31	15	3.0	2.1	2.6
6	31UDGJ Broughton Astley - Sutton	39	44	18	4.1	1.6	2.9
7	31UDGK Dunton	22	23	7	2.5	0.4	1.5
8	31UDGL Fleckney	85	86	35	3.7	1.7	2.8
9	31UDGM Glen	42	51	34	1.8	1.6	1.7
10	31UDGN Kibworth	82	70	34	3.0	1.5	2.3
11	31UDGP Lubenham	27	40	18	1.1	2.0	1.4
12	31UDGQ Lutterworth Brookfield	24	29	15	2.1	1.0	1.6
13	31UDGR Lutterworth Orchard	37	28	16	4.0	1.7	2.9
14	31UDGS Lutterworth Springs	37	36	19	4.0	1.5	2.8
15	31UDGT Lutterworth Swift	46	49	22	3.7	2.2	3.0
16	31UDGU Market Harborough - Great Bowden*	105	121	81	3.0	1.9	2.5
17	31UDGW Market Harborough - Little Bowden*	75	67	26	3.4	1.6	2.5
18	31UDGX Market Harborough - Logan*	36	44	39	1.9	1.0	1.5
19	31UDGY Market Harborough - Welland*	108	112	79	4.5	1.9	3.2
20	31UDGZ Misterton	24	30	15	2.1	1.0	1.6
21	31UDHA Nevill	23	22	16	2.7	0.8	1.8
22	31UDHB Peatling	21	27	8	1.9	1.1	1.5
23	31UDHC Thurnby and Houghton	97	94	60	3.5	2.0	2.8
24	31UDHD Tilton	14	18	7	1.7	0.5	1.2
25	31UDHE Ullesthorpe	27	29	11	2.3	1.6	2.0
	Harborough District	1,103	1,159	631	2.9	1.5	2.2
	* Market Harborough	324	344	225	3.3	1.7	2.5

# These figures are suppressed as value is 1 or 2.

Market Town geographies defined by Leicestershire County Council and figures calculated using ONS Claimant Count (JSA) figures and denominators.

Source: Office for National Statistics

If you require further information please contact Joelle Bradly, Policy, Performance & Research, Chief Executive's Department, Leicestershire County Council on 0116 3055883.

**Claimant Count (JSA) Ward Data  
October 2009**

**Hinckley & Bosworth Borough**

<b>Code</b>	<b>Wards (resident-based proportions)</b>	<b>Total</b>	<b>Last month</b>	<b>Last year</b>	<b>Male %</b>	<b>Female %</b>	<b>Total %</b>
1	31UEFU Ambien	38	42	17	2.1	1.3	1.7
2	31UEFW Barlestone Nailstone & Osbaston	34	36	32	2.3	0.9	1.6
3	31UEFX Barwell	246	238	166	5.9	2.7	4.4
4	31UEFY Burbage St. Catherines & Lash Hill*	110	111	70	4.6	1.9	3.4
5	31UEFZ Burbage Sketchley and Stretton*	100	115	58	2.0	1.6	1.8
6	31UEGA Cadeby Carlton & Market Bosworth	29	34	23	1.6	1.3	1.5
7	31UEGB Earl Shilton*	289	321	185	7.2	2.6	5.0
8	31UEGC Groby	75	85	57	2.3	1.3	1.8
9	31UEGD Hinckley Castle*	164	163	118	5.2	2.2	3.9
10	31UEGE Hinckley Clarendon*	182	197	107	4.1	2.2	3.1
11	31UEGF Hinckley De Montfort*	200	212	94	4.5	2.2	3.4
12	31UEGG Hinckley Trinity*	170	182	113	5.9	2.2	4.1
13	31UEGH Markfield Stanton and Fieldhead	82	83	45	3.6	1.3	2.5
14	31UEGJ Newbold Verdon with Desford & Peckleton	99	110	47	2.7	1.2	2.0
15	31UEGK Ratby Bagworth and Thornton	112	119	52	3.5	1.9	2.7
16	31UEGL Twycross & Witherley with Sheepy	27	27	17	1.8	1.2	1.5
	Hinckley & Bosworth District	1,957	2,075	1,201	4.0	1.9	3.0
	* Hinckley (inc. Burbage & Earl Shilton)	1,215	1,301	745	4.8	2.2	3.5

# These figures are suppressed as value is 1 or 2.

Market Town geographies defined by Leicestershire County Council and figures calculated using ONS Claimant Count (JSA) figures and denominators.

Source: Office for National Statistics

If you require further information please contact Joelle Bradly, Policy, Performance & Research, Chief Executive's Department, Leicestershire County Council on 0116 3055883.

**Claimant Count (JSA) Ward Data  
October 2009**

			Leicester City					
Code	Wards (resident-based proportions)		Total	Last month	Last year	Male %	Female %	Total %
1	00FNNF	Abbey	680	732	507	12.2	4.3	8.3
2	00FNNG	Aylestone	358	374	233	8.2	2.4	5.4
3	00FNNH	Beaumont Leys	853	869	613	11.6	4.4	8.1
4	00FNNJ	Belgrave	453	489	322	7.8	4.9	6.4
5	00FNNK	Braunstone Park & Rowley Fields	849	877	522	12.1	4.4	8.2
6	00FNNL	Castle	840	856	583	8.2	3.0	5.7
7	00FNNM	Charnwood	655	655	476	12.4	5.2	8.8
8	00FNNN	Coleman	611	639	436	10.2	4.4	7.4
9	00FNNP	Evington	300	338	191	7.0	3.2	5.1
10	00FNNQ	Eyres Monsell	500	510	352	11.6	4.0	7.7
11	00FNNR	Fosse	448	477	274	7.8	3.1	5.6
12	00FNNS	Freemen	572	595	391	12.1	4.4	8.1
13	00FNNT	Humberstone and Hamilton	518	552	312	7.6	3.8	5.8
14	00FNNU	Knighon	318	330	202	4.7	2.1	3.4
15	00FNNW	Latimer	410	453	292	6.2	4.2	5.2
16	00FNNX	New Parks	859	874	562	13.4	4.6	9.0
17	00FNNY	Rushey Mead	467	490	301	5.9	3.2	4.6
18	00FNNZ	Spinney Hills	1173	1233	919	12.7	4.6	8.8
19	00FNPA	Stoneygate	790	854	602	8.9	3.9	6.5
20	00FNPB	Thurncourt	344	366	236	8.8	3.5	6.2
21	00FNPC	Westcotes	483	495	268	9.3	4.0	6.8
22	00FNPD	Western Park	327	340	185	7.5	2.7	5.2
		Leicester	12,808	13,398	8,779	9.3	3.9	6.7

# These figures are suppressed as value is 1 or 2.

Source: Office for National Statistics

If you require further information please contact Joelle Bradly, Policy, Performance & Research, Chief Executive's Department, Leicestershire County Council on 0116 3055883.

**Claimant Count (JSA) Ward Data  
October 2009**

**Melton Borough**

Code	Wards (resident-based proportions)	Total	Last month	Last year	Male	Female	Total
					%	%	%
1	3IUGFT Asfordby	60	52	42	4.3	1.6	3.0
2	3IUGFU Bottesford	36	39	21	2.4	1.1	1.8
3	3IUGFW Croxton Kerrial	14	19	10	1.2	1.3	1.3
4	3IUGFX Frisby-on-the-Wreake	13	11	10	1.3	1.2	1.2
5	3IUGFY Gaddesby	9	14	11	1.3	#	0.9
6	3IUGFZ Long Clawson and Stathern	24	24	25	1.6	0.3	0.9
7	3IUGGA Melton Craven*	61	75	39	3.5	2.0	2.8
8	3IUGGB Melton Dorian*	82	104	49	3.7	1.2	2.5
9	3IUGGC Melton Egerton*	110	110	60	6.2	3.3	4.8
10	3IUGGD Melton Newport*	65	77	31	3.5	1.0	2.4
11	3IUGGE Melton Sysonby*	75	87	53	3.4	1.1	2.3
12	3IUGGF Melton Warwick*	76	77	45	4.4	2.6	3.6
13	3IUGGG Old Dalby	29	27	9	2.8	1.9	2.4
14	3IUGGH Somerby	21	19	13	2.4	1.4	1.9
15	3IUGGJ Waltham-on-the-Wolds	16	14	11	2.2	1.1	1.7
16	3IUGGK Wymondham	28	27	18	3.1	2.4	2.8
	Melton Borough	719	776	447	3.2	1.5	2.4
	* Melton Mowbray	469	530	277	4.0	1.8	2.9

# These figures are suppressed as value is 1 or 2.

Market Town geographies defined by Leicestershire County Council and figures calculated using ONS Claimant Count (JSA) figures and denominators.

Source: Office for National Statistics

If you require further information please contact Joelle Bradly, Policy, Performance & Research, Chief Executive's Department, Leicestershire County Council on 0116 3055883.

**Claimant Count (JSA) Ward Data  
October 2009**

**North West Leicestershire District**

Code		Wards (resident-based proportions)	Total	Last month	Last year	Male %	Female %	Total %
1	3IUHFZ	Appleby	28	28	15	2.8	1.5	2.2
2	3IUHGA	Ashby Castle*	25	20	13	1.6	0.0	1.5
3	3IUHGB	Ashby Holywell*	82	95	52	4.3	1.1	2.8
4	3IUHGC	Ashby Ivanhoe*	75	83	39	4.3	1.4	2.9
5	3IUHGD	Bardon**	48	54	29	3.2	1.4	2.3
6	3IUHGE	Breedon	23	27	19	2.5	0.6	1.6
7	3IUHGF	Castle Donington	132	133	80	4.2	1.8	3.1
8	3IUHGG	Coalville**	154	158	101	6.7	2.8	4.9
9	3IUHGH	Greenhill**	207	196	135	6.9	3.0	5.1
10	3IUHGJ	Hugglescote**	83	85	55	4.2	1.3	2.8
11	3IUHGK	Ibstock and Heather	153	145	104	4.9	2.1	3.6
12	3IUHGL	Kegworth and Whatton	60	65	34	3.0	1.1	2.1
13	3IUHGM	Measham	107	109	64	4.5	2.1	3.3
14	3IUHGN	Moira	87	81	48	4.0	2.0	3.0
15	3IUHGP	Oakthorpe and Donisthorpe	48	44	23	4.0	1.7	2.9
16	3IUHGQ	Ravenstone and Packington	39	37	23	3.5	0.0	2.6
17	3IUHGR	Snibston**	88	102	75	3.8	1.5	2.7
18	3IUHGS	Thringstone**	77	86	47	3.6	2.1	2.9
19	3IUHGT	Valley	81	91	51	3.8	2.1	3.0
20	3IUHGU	Whitwick**	107	107	86	3.6	1.6	2.7
NW Leicestershire District			1,704	1,746	1,093	4.2	1.8	3.1
* Ashby de la Zouch			182	198	104	3.7	1.3	2.6
** Coalville			764	788	528	4.8	2.0	3.5

# These figures are suppressed as value is 1 or 2.

Market Town geographies defined by Leicestershire County Council and figures calculated using ONS Claimant Count (JSA) figures and denominators.

Source: Office for National Statistics

If you require further information please contact Joelle Bradly, Policy, Performance & Research, Chief Executive's Department, Leicestershire County Council on 0116 3055883.

**Claimant Count (JSA) Ward Data  
October 2009**

**Oadby & Wigston Borough**

Code	Wards (resident-based proportions)	Total	Last month	Last year	Male	Female	Total
					%	%	
1	31UJFL Oadby Brocks Hill*	61	63	41	3.5	2.0	2.8
2	31UJFM Oadby Grange*	52	61	42	1.4	0.8	1.1
3	31UJFN Oadby St. Peter's*	100	105	55	6.9	2.5	4.7
4	31UJFP Oadby Uplands*	63	82	54	3.2	1.8	2.5
5	31UJFQ Oadby Woodlands*	76	77	40	3.3	1.7	2.5
6	31UJFR South Wigston	244	251	140	7.8	2.7	5.3
7	31UJFS Wigston All Saints**	85	87	66	3.1	1.5	2.4
8	31UJFT Wigston Fields**	166	173	96	6.4	2.2	4.4
9	31UJFU Wigston Meadowcourt**	99	113	63	3.2	1.5	2.4
10	31UJFW Wigston St. Wolstan's**	101	110	70	3.6	1.7	2.7
	Oadby & Wigston Borough	1,047	1,122	667	4.1	1.8	3.0
	* Oadby	352	388	232	3.3	1.7	2.5
	** Wigston	451	483	295	4.1	1.7	3.0

# These figures are suppressed as value is 1 or 2.

Market Town geographies defined by Leicestershire County Council and figures calculated using ONS Claimant Count (JSA) figures and denominators.

Source: Office for National Statistics

If you require further information please contact Joelle Bradly, Policy, Performance & Research, Chief Executive's Department, Leicestershire County Council on 0116 3055883.

**Claimant Count (JSA) Ward Data  
October 2009**

			Rutland				
Code	Wards (resident-based proportions)	Total	Last month	Last year	Male	Female	Total
					%	%	
1	00FPMS Braunston and Belton	18	14	5	3.2	1.7	2.5
2	00FPMT Cottesmore	22	20	16	1.2	1.2	1.2
3	00FPMU Exton	13	12	9	0.8	1.4	1.0
4	00FPMW Greetham	17	17	7	0.9	2.0	1.2
5	00FPMX Ketton	30	28	13	2.8	1.2	2.1
6	00FPMY Langham	18	13	5	3.6	0.8	2.3
7	00FPMZ Lyddington	11	10	6	2.3	#	1.4
8	00FPNA Martinsthorpe	9	15	6	2.0	#	1.4
9	00FPNB Normanton	28	31	19	1.3	1.8	1.5
10	00FPNC Oakham North East*	33	31	16	2.5	0.9	1.7
11	00FPND Oakham North West*	32	35	12	2.1	1.3	1.7
12	00FPNE Oakham South East*	19	20	8	2.6	#	1.4
13	00FPNF Oakham South West*	30	31	15	2.9	1.6	2.3
14	00FPNG Ryhall and Casterton	28	25	21	2.0	1.1	1.6
15	00FPNH Uppingham	52	48	23	2.4	1.2	1.8
16	00FPNJ Whissendine	18	18	7	2.2	2.3	2.2
	Rutland	378	368	188	2.0	1.2	1.7
	*Oakham	114	117	51	2.5	1.0	1.8

# These figures are suppressed as value is 1 or 2.

Market Town geographies defined by Leicestershire County Council and figures calculated using ONS Claimant Count (JSA) figures and denominators.

Source: Office for National Statistics

If you require further information please contact Joelle Bradly, Policy, Performance & Research, Chief Executive's Department, Leicestershire County Council on 0116 3055883.