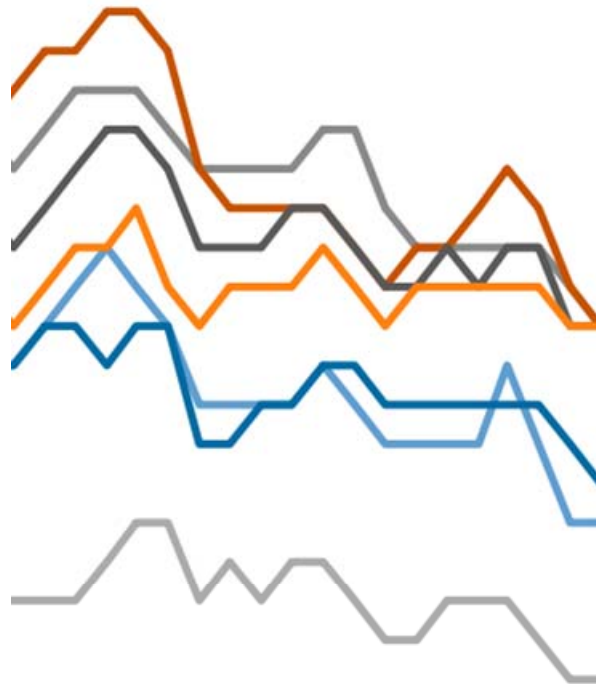


Unemployment Bulletin

November 2014

Divya Patel & Alex Lea
17th December 2014



Divya Patel

Research & Insight Officer

Research & Insight Team
Strategy, Partnerships & Communities Branch
Chief Executive's Department
Leicestershire County Council
County Hall, Glenfield
Leicester LE3 8RA

Tel 0116 305 7257
Email divya.patel@leics.gov.uk

Alex Lea

Research & Insight Manager

Research & Insight Team
Strategy, Partnerships & Communities Branch
Chief Executive's Department
Leicestershire County Council
County Hall, Glenfield
Leicester LE3 8RA

Tel 0116 305 6803
Email alex.lea@leics.gov.uk

Produced by the Research and Insight Team at Leicestershire County Council.

Whilst every effort has been made to ensure the accuracy of the information contained within this report, Leicestershire County Council cannot be held responsible for any errors or omission relating to the data contained within the report.

About the Research and Insight Team

The Research and Insight Team is based in the Strategy, Partnerships & Communities Branch of the Chief Executive's Department of Leicestershire County Council. We carry out a broad spectrum of work on wide-ranging topics using a variety of skills and techniques.

Our clients include a range of partner organisations as well as county council service departments. Local communities and Councillors are also key users of the team's work. We also collaborate with a diverse set of partner organisations, locally and further afield, to deliver new and innovative research and insight. Examples include the GiCentre at City University, London on data visualisation and the Centre for Social Action at DeMontfort University on research into social capital.

The work of the team can be summarised into six broad areas:

- **Data visualisation and analytics** - the team use a range of software packages, including Tableau and Excel to produce fast and effective analysis of data to support service delivery;
- **Customer insight** - a deep truth based on an understanding of customer behaviour, experiences and attitudes and their needs from a service;
- **Evaluation** - using Social Return on Investment (SROI) to put financial values on the important impacts of a project, organization or programme as identified by stakeholders;
- **Facts and figures** - simple profiles either by geography or theme;
- **Strategic assessments** - generally to summarise the existing evidence available highlighting any emerging evidence and potential gaps;
- **Consultation and primary research** - using primary research techniques, including surveys and focus group to collect and interpret insight from residents, service users, staff and other stakeholders; and
- **Commissioning research and insight** - procuring and project managing research and insight from external agencies and suppliers.

For more information on how the team can offer support your department or organisation, please contact the team on the details below.

Research & Insight Team
Strategy, Partnerships & Communities

Chief Executive's Department
Leicestershire County Council
County Hall
Glenfield
Leicester
LE3 8RA
ri@leics.gov.uk
www.lsr-online.org

Contents

Introduction	5
Commentary	6
Unemployment Data	8
Data Guide	10
Unemployment Dashboards	10
NOMIS	12
Population Data	12
Definitions & Further Information	13

Introduction

The Unemployment Bulletin provides a monthly update of the latest unemployment and benefit data for Leicester and Leicestershire. The data is sourced from Nomis¹ which contains data from the Office for National Statistics, the Department of Work and Pensions and other official sources. Some figures have been calculated by Leicestershire County Council and where this is the case it is stated in the source.

There are a number of ways of measuring unemployment and this bulletin mainly focuses on the Claimant Count which is a measure of the number or proportion of people receiving Job Seekers Allowance (JSA) and National Insurance credits at Jobcentre Plus local offices. The claimant count is released on a monthly basis and is available to ward level.

Unemployment Dashboards

The majority of unemployment data is available from a dashboard produced by the Research and Insight Team at Leicestershire County Council and published on LSR Online. The dashboard is available from the following link:

https://public.tableausoftware.com/views/UnemploymentBulletin/HeadlineData?:embed=y&:display_count=no:showVizHome=no

Business Register and Employment Survey (BRES)

In addition, the annual Business Register and Employment Survey (BRES) provides data on employment by industry and is available from the following link:

https://public.tableausoftware.com/views/BRESData/BRESDashboard?:embed=y&:display_count=no:showVizHome=no

Archived Reports

Archived Unemployment Bulletins and other reports produced by Leicestershire County Council are available on the Leicestershire Statistics and Research Online website from the following link:

<http://www.lsr-online.org/reports.html?query=Keyword...&tag=Unemployment&category1=&month=&age=3&sort=latest&submit=Filter>

Next Release

The next claimant count data will be released by the Office National for Statistics on **21st January 2015**.

¹ For more information, please visit www.nomisweb.co.uk

Commentary

National

A comprehensive commentary on the national labour market is produced by the Centre for Economic and Social Inclusion (CESI) and is available at the following link:

<http://www.cesi.org.uk/statistics/labour>²

Leicester, Leicestershire and Rutland

The overall claimant count for the LLEP³ area fell again in November 2014, with over 550 fewer people claiming JSA in November compared to October 2014. The total number of claimants in November 2014 was just under 10,700. This downward trend was echoed across other top tier authorities in the region. In Leicester City there were just under 6,500 people claiming JSA whilst in the county there were just over 4,000. In terms of the claimant rate, 1.7 percent of the working age population were claiming JSA in the LLEP area, 2.9 percent in Leicester City and 1 percent in the county. This is compared to 1.9 percent in the East Midlands and England, and 2.1 percent in the UK as a whole.

The downward trend was continued across Leicestershire local authorities, with all local authorities experiencing a fall in the number of JSA claimants. The largest single decrease was in Oadby and Wigston, where there were almost 50 fewer people claiming JSA in November 2014 compared to October 2014. Charnwood experienced the highest total number of claimants, with 1,060 and Melton the smallest, with just over 300. In terms of the claimant rate, all areas experienced a slight fall since the previous month. North West Leicestershire and Oadby and Wigston experienced the highest proportion of working age population claiming JSA in the county with 1.3 percent while Harborough experienced the lowest rate with 0.6 percent.

Other figures of note include:

- 250 fewer JSA claimants in the LLEP area claiming for 12 months or longer between October and November 2014;
- 225 fewer claimants in the LLEP area aged 16-24 between October and November 2014;
- 190 fewer claimants in the LLEP area from sales and customer service occupations between October and November 2014;
- 200 fewer claimants in the LLEP area elementary occupations between October and November 2014;
- Spinney Hills Ward exhibits the highest claimant count in the city, county and Rutland with 579 claimants. The next highest is New Parks Ward with 457;

² N.B. In some cases, data reported by CESI is seasonally-adjusted and may not correspond with figures reported within this report and the accompanying dashboards. Views expressed are those of CESI and may not reflect the views of Leicestershire County Council.

³ The LLEP area comprises Leicester City and Leicestershire County

- New Parks Ward exhibits the highest claimant rate with 4.5 percent of the working age population claiming JSA;
- Loughborough (including Hathern) exhibits the highest number of claimants, with 469, closely followed by Hinckley (including Burbage and Earl Shilton), with 453 claimants.

Unemployment Data

The following section covers data released periodically (i.e. ILO or DWP benefit data) and additional data not covered by the unemployment dashboards. Rates for market towns and ethnicity are calculated separately due to changes in population denominators which would affect trend data.

Claimant Rates by Market Towns

The table below displays the claimant count and rate for Leicestershire and Rutland market towns. Rates are calculated using mid-2010 based population estimates.

Table 1 – Claimant Count and Rates by Market Towns

Market Town	Count	Rate
Coalville	390	1.6
Wigston	205	1.4
Melton Mowbray	219	1.3
Hinckley (inc. Burbage & Earl Shilton)	453	1.3
Loughborough including Hathern	469	1.0
Oadby	159	1.0
Ashby de la Zouch	74	1.0
Oakham	57	0.9
Market Harborough	77	0.5

Source: NOMIS, 2014; ONS, 2014.

N.B. population denominators for market towns have been updated in November 2014 to include 2012 mid-year estimates, which may affect comparison with historical data.

Data for market towns is based on aggregated ward data. Historical rate data and a list of wards covering market towns is available from archived versions of the unemployment bulletin, available via the link on page 5.

Claimant Rates by Ethnicity

The table below displays the claimant count rate by broad ethnic group for Leicester, Leicestershire and Rutland. Rates are calculated using 2011 Census population data:

Table 2 – Claimant Rates by Broad Ethnic Group

Area	Broad Ethnic Group					
	White	Mixed	Black or Black British	Asian or Asian British	Chinese or Other Ethnic Group	Non-white
Blaby	0.6	1.0	1.7	1.1	0.6	1.2
Charnwood	0.6	0.8	1.1	0.8	0.9	0.8
Harborough	0.4	0.0	1.5	1.1	0.0	0.7
Hinckley and Bosworth	0.6	0.0	1.9	1.0	1.1	0.8
Melton	0.6	0.0	0.0	1.2	0.0	0.5
North West Leicestershire	0.8	0.6	2.4	0.0	1.6	0.7
Oadby and Wigston	0.8	1.3	2.2	0.9	0.9	1.0
Leicester City	2.1	2.0	3.7	1.6	2.0	1.9
Leicestershire	0.6	0.8	1.6	0.9	0.8	0.9
LLEP	1.0	1.5	3.4	1.4	1.6	1.7
East Midlands	1.1	1.4	3.4	1.3	2.0	1.7

Source: NOMIS, 2014; ONS, 2011.

Historical rate data by ethnicity is available from archived versions of the unemployment bulletin available via the link on page 5.

Data Guide

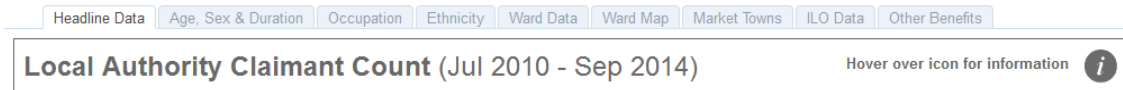
This guidance has been created to help you get the most out of the various sources of unemployment data available through the accompanying dashboards and official sources.

Unemployment Dashboards

A range of interactive dashboards have been created by the Research and Insight Team to help interested parties access relevant data and understand change over time and across geographies. Links to all dashboards currently managed by the team are included in the **References** section below.

How to use the dashboards

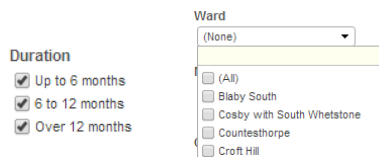
1. Use the **tabs** at the top of the page to navigate between dashboards:



2. Dashboards display monthly claimant count by default. Where applicable, use the **radial buttons** to change the data displayed:

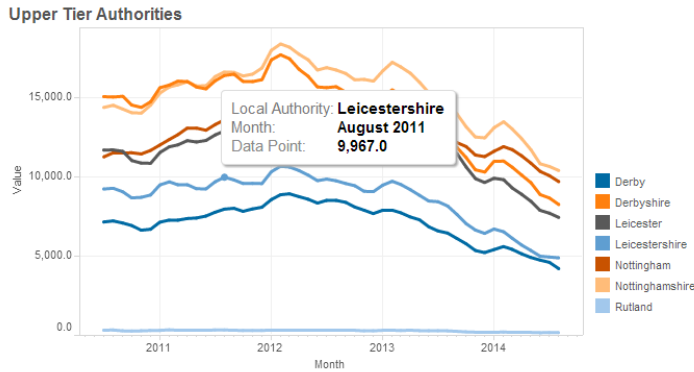


3. Where applicable, use the **check boxes** or **drop-down** list to switch between different combinations of categories:

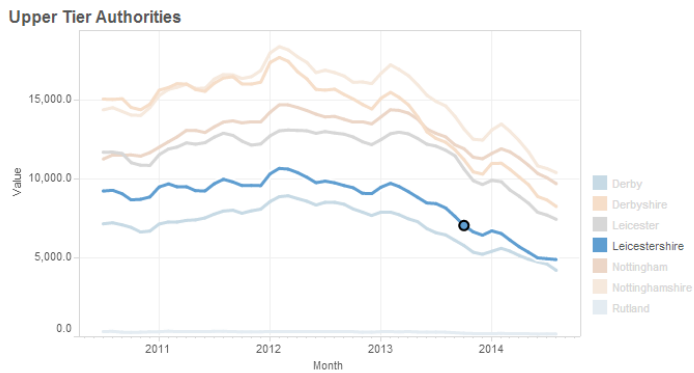


Where applicable, make selection and click **Apply** to update the dashboard.

4. For more information on a specific point, **hover** over the dashboard:



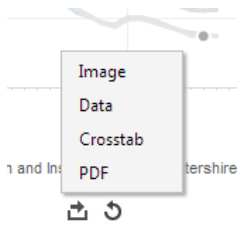
5. To highlight relevant data across the dashboard, **click** on a point or table cell:



6. For more information on the dashboard, hover over the **icon**:



7. To export the dashboard, a specific chart or table, or the underlying data, click on an element and use the **Export icon** at the bottom of the dashboard:



When exporting **data**, use the tabs at the top of the **View Data** window that appears to select the summary, or underlying data.

8. To share the dashboard, or a specific view, use the **Share icons** in the bottom-left corner:



9. To download the entire dashboard, including underlying data, click on the **Download** link at the bottom-right corner (N.B. requires Tableau software to open)



NOMIS

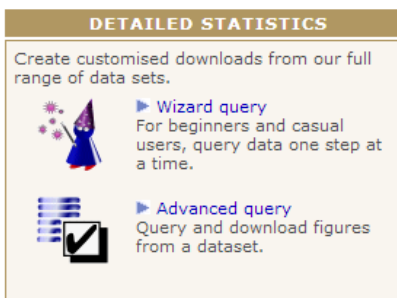
A complete set of statistics for a specific area can be downloaded from the NOMIS website, available at the following link:

<http://www.nomisweb.co.uk>

1. On the NOMIS homepage, select a geography from the **Summary Statistics** menu and follow the instructions to access a selection of data for that area:



2. For more comprehensive data (including 2011 Census, population estimates etc.), follow the **Wizard Query** or **Advanced Query** links from the **Detailed Statistics** menu and follow the instructions:



Population Data

Population data used to calculate rates can be accessed from NOMIS using the **Detailed Statistics** menu above and following the instructions.

Definitions & Further Information

Claimant Count

JSA claimant count records the number of people claiming Jobseekers Allowance (JSA) and National Insurance credits at Jobcentre Plus local offices. The percentage figures express the number of claimants resident in an area as a percentage of those aged 16-64 resident in that area.

Market Towns

The Market Town geographies are defined by Leicestershire County Council and figures are calculated using ONS Claimant Count (JSA) figures and mid 2010 resident population aged 16-64.

Unemployment: International Labour Organisation (ILO) Definition

Official estimates of unemployment in the UK are obtained from the Labour Force Survey (LFS) using the internationally agreed International Labour Organisation (ILO) definition. The ILO definition is based on the number of people without jobs who are looking for and available to start work. The LFS unemployment figures which are subject to sampling differences are not available for smaller areas.

Unemployment Rate (LFS ILO definition) - expresses the number of unemployed people resident in an area as a percentage of the economically active working age population resident in that area.

Labour Force Survey - The Labour Force Survey is a random sample survey which is carried out throughout the UK. It is conducted every three months using around 53,000 households. The survey collects information about the personal circumstances and work of everyone living in these households. The Office for National Statistics (ONS) uses the Labour Force Survey as its source for unemployment data. Unemployment is measured through questions asked in the survey and not by interviewing everybody in the country. Answers are then weighted to represent everyone. As with any sample survey there is sampling variability and this is high for areas below regional level. Therefore, the figures are not reliable for small areas. Each month the ONS releases statistics on the number of people who are unemployed in the United Kingdom for the latest available 3-month rolling period.

Other Department for Work and Pensions Benefits Statistics

Job Seekers Allowance is one of a number of types of benefit which is related to worklessness, and recipients of this benefit constitute the most visible group of people who are out of work. However, many people have been diverted away from Job Seekers Allowance on to other benefits, the largest number being onto Incapacity Benefit. Nationally, the number of people claiming Incapacity Benefit is over three times the number of people out of work and claiming JSA.

One method of classifying benefit claimants is by breaking them down into statistical groups. This presents the main reason why an individual is claiming benefit. Benefits are arranged hierarchically and claimants are assigned to the top most benefit which they receive. In this way each claimant only appears once, even though they may claim more

than one benefit - the total number of working-age people who are claiming one or more key benefits is often used as a proxy for worklessness.

These figures are provided by the Department for Work and Pensions and are updated quarterly.

If you require information contained in this leaflet in another version e.g. large print, Braille, tape or alternative language please telephone: 0116 305 6803, Fax: 0116 305 7271 or Minicom: 0116 305 6160.

ਜੇ ਆਪ ਆ ਮਾਫਿਤੀ ਆਪਨੀ ਆਖਾਮਾਂ ਸਮਝਵਾਮਾਂ ਥੋੜੀ ਮਦਦ ਚੰਘੜਨਾਂ ਡੋ ਨੋ 0116 305 6803 ਨੰਬਰ ਪਰ ਫ਼ੋਨ ਕਰਥੋ ਅਨੇ ਅਮੇ ਆਪਨੇ ਮਦਦ ਕਰਵਾ ਅਵਥਾ ਕਰੀਥੁੰ.

ਜੇਕਰ ਤੁਹਾਨੂੰ ਇਸ ਜਾਣਕਾਰੀ ਨੂੰ ਸਮਝਣ ਵਿਚ ਕੁਝ ਮਦਦ ਚਾਹੀਦੀ ਹੈ ਤਾਂ ਕਿਰਪਾ ਕਰਕੇ 0116 305 6803 ਨੰਬਰ ਤੇ ਫ਼ੋਨ ਕਰੋ ਅਤੇ ਅਸੀਂ ਤੁਹਾਡੀ ਮਦਦ ਲਈ ਕਿਸੇ ਦਾ ਪ੍ਰਬੰਧ ਕਰ ਦਵਾਂਗੇ।

এই তথ্য নিজের ভাষায় বুঝার জন্য আপনার যদি কোন সাহায্যের প্রয়োজন হয়, তবে 0116 305 6803 এই নম্বরে ফোন করলে আমরা উপযুক্ত ব্যক্তির ব্যবস্থা করবো।

اگر آپ کو یہ معلومات سمجھنے میں کچھ مدد درکار ہے تو براہ مہربانی اس نمبر پر کال کریں اور ہم آپ کی مدد کے لئے کسی کا انتظام کریں گے۔
0116 305 6803

假如閣下需要幫助，用你的語言去明白這些資訊，請致電 0116 305 6803，我們會安排有關人員為你提供幫助。

Jeżeli potrzebujesz pomocy w zrozumieniu tej informacji w Twoim języku, zadzwoń pod numer 0116 305 6803, a my Ci pomożemy.

Research & Insight Team
Strategy, Partnerships & Communities

Chief Executive's Department
Leicestershire County Council
County Hall
Glenfield
Leicester
LE3 8RA

ri@leics.gov.uk
www.lsr-online.org