

Unemployment Bulletin

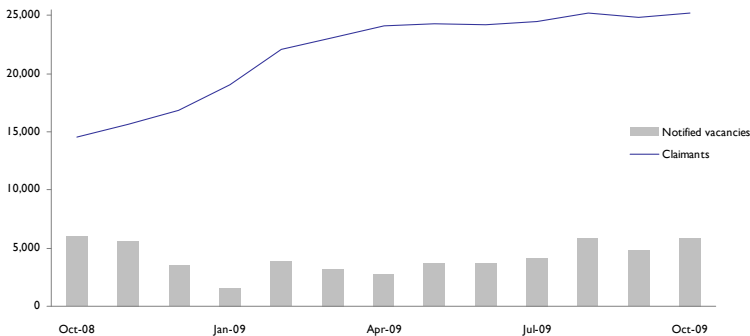
October 2009



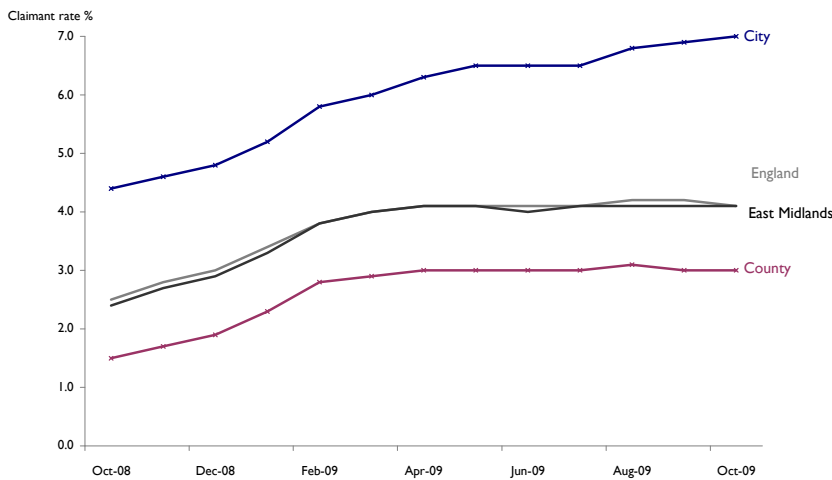
Recession Summary

This additional front page provides a monthly snapshot of the economic downturn at a local level. JSA claimants and vacancies are used to exemplify recent change and trends over the past 12 months. Following tables have also been adapted to include monthly and annual comparisons.

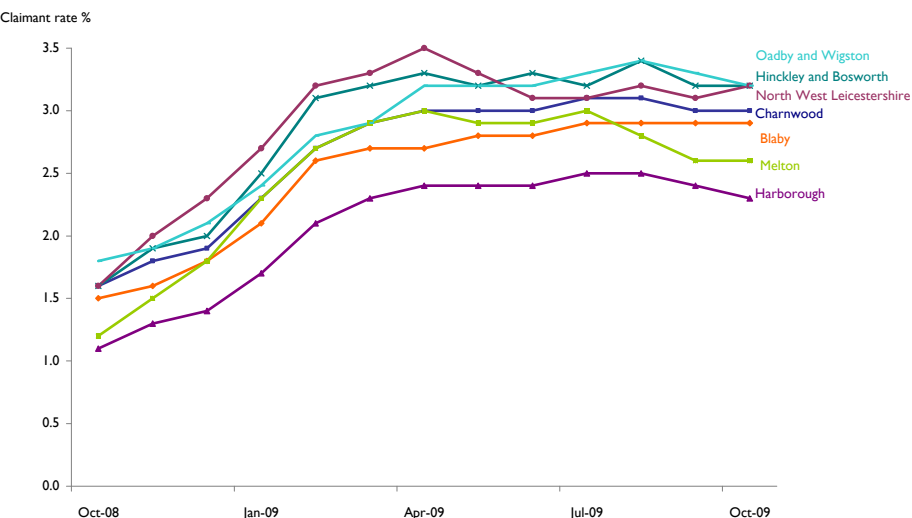
JSA claimants and new notified vacancies in Leicester and Leicestershire
October 08 to October 09



JSA Claimant Rate
October 2008 to October 2009



JSA claimant rates in Leicestershire districts
October 2008 to October 2009



Key points

- There were 25,222 people claiming JSA benefits in the sub-region in October 2009; compared to 24,885 in September 2009 and 14,503 in October 2008.
- The JSA claimant numbers in October 2009 increased by 290 in the City to a rate of 7%. In the County, claimants increase by 47 remaining at 3%. Claimant rates *decreased* in Harborough and Oadby and Wigston districts. The only rate increase in the County was in North West Leicestershire.
- Abbey and Loughborough Hastings wards saw the largest monthly increase in JSA rates (+ 49 claimants in Abbey and +24 in Loughborough Hastings). Oadby Brocks Hill and Oakthorpe and Donisthorpe wards saw the largest monthly decreases in claimant rates.
- In the City, Beaumont Leys, Rushey Mead and Western Park saw claimant *decreases* this month. Spinney Hills, which had the highest claimant rate last month, saw no change in claimant count. New Parks and Spinney Hills now both have claimant rates of 9.2%
- In the sub-region, there were 5,863 notified vacancies in September 2009 compared to 4,823 the previous month. There were 4,838 unfilled live vacancies in September. This is a ratio of 5.2 claimants per unfilled vacancy, compared to 6 the previous month.

Further analysis on the impact of the recession in the sub-region is available in the September Credit Crunch Report

Unemployment Bulletin

October 2009



Introduction

The Unemployment Bulletin provides a monthly update of the latest unemployment and benefit data for Leicester and Leicestershire. The data is sourced from Nomis (www.nomisweb.co.uk) which contains data from the Office for National Statistics, the Department of Work and Pensions and other official sources. Some figures have been calculated by Leicestershire County Council and where this is the case it is stated in the source.

There are a number of ways of measuring unemployment and this bulletin mainly focuses on the Claimant Count which is a measure of the number or proportion of people receiving Job Seekers Allowance (JSA) and National Insurance Credits at Jobcentre Plus local offices. This is not an official measure of unemployment but it is the only indicative statistic available for areas smaller than Local Authorities.

Official estimates of unemployment in the UK are obtained from the Labour Force Survey (LFS) using the internationally agreed International Labour Organisation (ILO) definition. The ILO definition is based on the number of people without jobs who are looking for work and are available to start work (and includes people whether or not they are eligible to receive unemployment related benefits). The LFS unemployment figures which are subject to sampling differences are not reliable at small areas. The Claimant Count is released on a monthly basis and is available down to ward level, so is used as a more current indicator of unemployment levels. Using the two sources together provides a more comprehensive picture of the labour market.

There is a large degree of overlap between the Claimant Count and Unemployment (LFS ILO definition) although the latter figures are generally higher. People who are not claimants can appear among the unemployed if they are not entitled to unemployment related benefits. Similarly, claimants of unemployment related benefits may not appear in the measure of unemployment if they stated that they are not seeking or are not available to start work.

Tables 1 to 7 use Claimant Count data and Table 8 shows the Unemployment (LFS ILO definition) figures.

Table 1: Resident-Based Claimant Count (JSA) Proportions: October 2009

Area	Claimant Count Proportion (working age)			Total Claimant Count	Change since last month	Change since last year	Previous months Proportion (change)	Previous years Proportion (change)
	Total	Male	Female					
Leicester Shire	4.3%	5.8%	2.6%	25,222	337	10,719	4.2%(0.1)	2.5%(1.8)
Leicestershire County	3.0%	3.9%	1.8%	11,824	47	5,804	3.0%(0.0)	1.5%(1.5)
Leicester City	7.0%	9.7%	4.1%	13,398	290	4,915	6.9%(0.1)	4.4%(2.6)
Rutland	1.6%	2.0%	1.2%	368	-14	198	1.7%(-0.1)	0.8%(0.8)
East Midlands	4.1%	5.6%	2.4%	111,598	-137	45,473	4.1%(0.0)	2.4%(1.7)
UK	4.2%	5.7%	2.4%	1,582,555	-8557	612,276	4.2%(0.0)	2.6%(1.6)

Source: Office for National Statistics (Nomis)

Note: Leicester Shire comprises the areas of Leicestershire County and Leicester City only.

National Statistics will release the November 2009 unemployment figures on Wednesday 16th December 2009.

Archived Unemployment Bulletins and other reports produced by Leicestershire County Council are available on the Leicestershire Statistics and Research Online website, www.lsr-online.org

Table 2: Resident-Based Claimant Count (JSA) Proportions: October 2009.

Districts	Claimant Count Proportion (working age)	Total Claimant Count	Total last month	Total last year	Previous months Proportion (change)	Previous years Proportion (change)
Oadby & Wigston	3.2%	1,122	1,145	436	3.3%(-0.1)	1.8%(1.4)
Hinckley & Bosworth	3.2%	2,075	2,064	787	3.2%(0.0)	1.6%(1.6)
NW Leicestershire	3.2%	1,746	1,696	630	3.1%(0.1)	1.6%(1.6)
Charnwood	3.0%	3,296	3,274	1,159	3.0%(0.0)	1.6%(1.4)
Blaby	2.9%	1,650	1,650	609	2.9%(0.0)	1.5%(1.4)
Melton	2.6%	776	778	259	2.6%(0.0)	1.2%(1.4)
Harborough	2.3%	1,159	1,170	384	2.4%(-0.1)	1.1%(1.2)

Source: Office for National Statistics (Nomis)

Table 3: Resident-Based Claimant Count (JSA) Proportions: in Market Towns; October 2009.

Market Towns	Claimant Count Proportion (working age)	Total Claimant Count	Previous months Proportion (change)	Previous years Proportion (change)
Hinckley (inc. Burbage & Earl Shilton)	3.8%	1,301	3.8%(0.0)	2.0%(1.8)
Coalville	3.6%	788	3.4%(0.2)	2.1%(1.5)
Melton Mowbray	3.3%	530	3.3%(0.0)	1.4%(1.9)
Wigston	3.2%	483	3.2%(0.0)	1.8%(1.4)
Loughborough (including Hathern)	3.0%	296	3.3%(-0.3)	2.0%(1.0)
Ashby de la Zouch	2.8%	198	2.6%(0.2)	1.3%(1.5)
Oadby	2.7%	388	2.8% (-0.1)	1.5%(1.2)
Market Harborough	2.7%	344	2.7%(0.0)	1.6%(1.1)
Oakham	1.8%	117	1.9%(-0.1)	0.7%(1.1)

Source: Office for National Statistics (Nomis); Market Town geographies defined by Leicestershire County Council and figures calculated using ONS Claimant Count (JSA) figures and denominators

Table 4: Claimant Count (JSA) by Age and Duration; October 2009.

Area	18-24 years old				Over 25 years old			
	Up to 6 months	6-12 months	13-18 months	Over 18 months	Up to 6 months	6-12 months	13-18 months	Over 18 months
Blaby	425	95	10	0	715	280	75	40
Charnwood	800	210	20	5	1,385	585	180	90
Harborough	290	60	10	0	535	185	55	25
Hinckley & Bosworth	490	120	15	0	905	380	105	55
Melton	185	45	10	0	335	140	40	20
NW Leicestershire	415	105	10	5	785	290	90	45
Oadby & Wigston	300	75	5	0	445	190	75	30
Leicester City	3,110	885	75	10	4,980	2,500	1,095	680
Leicestershire County	2,910	710	75	10	5,100	2,050	625	305
Rutland	90	25	0	0	175	55	15	10
Leicester Shire	6,020	1,595	150	20	10,080	4,550	1,720	985

Source: Office for National Statistics (Nomis) Note: Figures are rounded to the nearest 5.

Claimant Count (JSA) by Ethnicity

JSA benefit data have been published by the Office for National Statistics (ONS) for many years as a key labour market indicator. In November 2006 ONS published JSA claimant data by ethnicity for the first time. The data is available for the detailed ethnic groups down to Local Authority level and is backdated to April 2005.

JSA claimant data by ethnicity has been included in Tables 5, 6, and 7 of this bulletin. The JSA data by ethnicity used in these table is a month in arrears of the other Claimant Count data in the other tables in the bulletin.

For more information, please see; www.nomisweb.co.uk/articles/news/files/DWP_Ethnicity_JSA.pdf

Table 5: Claimant County (JSA) by Ethnicity; September 2009.

Area	White	Mixed	Black or Black British	Asian or Asian British	Chinese or Other Ethnic Group	'Non White'	Prefer not to say / Unknown
Blaby	1,390	25	25	110	10	170	90
Charnwood	2,680	40	25	275	55	395	195
Harborough	1,040	10	5	35	0	50	75
Hinckley & Bosworth	1,690	15	5	20	10	45	325
Melton	745	5	5	5	0	10	20
NW Leicestershire	1,605	10	5	5	5	20	75
Oadby & Wigston	810	25	20	230	5	280	55
Leicester City	6,825	365	1,160	3,610	345	5,475	810
Leicestershire County	9,960	130	85	670	90	975	840
Leicester Shire	16,785	495	1,245	4,280	430	6,450	1,650
East Midlands	91,380	1,875	3,965	6,475	1,215	13,530	6,555
Great Britain	1,207,675	24,615	84,675	81,470	26,555	217,315	107,725

Note: Figures are rounded to the nearest 5.

Sources: Office for National Statistics (Nomis)

Table 6: Resident-based Claimant Count (JSA) Proportions by Ethnicity; September 2009.

Area	White	Mixed	Black or Black British	Asian or Asian British	Chinese or Other Ethnic Group	'Non White'
Blaby	1.6%	2.3%	3.1%	2.8%	1.7%	2.6%
Charnwood	1.9%	2.1%	1.8%	2.5%	1.9%	2.3%
Harborough	1.4%	1.3%	1.3%	1.8%	0.0%	1.4%
Hinckley & Bosworth	1.7%	1.7%	1.3%	0.8%	2.0%	1.0%
Melton	1.6%	1.7%	2.5%	0.8%	0.0%	0.8%
NW Leicestershire	1.9%	1.4%	1.3%	0.4%	1.3%	0.7%
Oadby & Wigston	1.7%	3.1%	2.5%	3.0%	0.8%	2.9%
Leicester City	3.8%	5.1%	9.4%	4.3%	9.1%	5.1%
Leicestershire County	1.7%	2.0%	2.0%	2.3%	1.7%	2.2%
Leicester Shire	2.2%	3.7%	7.5%	3.8%	4.7%	4.2%
East Midlands	2.3%	3.4%	6.8%	3.2%	3.2%	3.8%

Source: Office for National Statistics (Nomis). Proportions calculated by Leicestershire County Council using ONS mid-2005 experimental estimates of population by ethnic group, published October 2007

Table 7: Claimant Count (JSA) by Ethnicity, Gender and Age; September 2009.

	Total	Previous month	Previous year	Male				Female			
				Aged <18	Aged 18-24	Aged 25-49	Aged 50+	Aged < 18	Aged 18-24	Aged 25-49	Aged 50+
Leicester Shire											
'White'	16,780	17,175	9,150	40	3,580	6,405	2,125	25	1,770	2,055	780
'Non-white'	6,447	6,440	4,145	5	1,135	2,575	635	2	745	985	365
Leicester City											
'White'	6,825	6,840	4,225	20	1,495	2,785	765	20	675	800	265
'Non-white'	5,475	5,430	3,650	5	945	2,240	540	0	620	810	315
Leicestershire County											
'White'	9,960	10,345	4,925	20	2,085	3,620	1,360	5	1,100	1,255	515
'Non-white'	985	1,000	505	5	190	340	100	0	125	175	50

Source: Office for National Statistics (Nomis)

Unemployment: International Labour Organisation (ILO) Definition

Official estimates of unemployment in the UK are obtained from the Labour Force Survey (LFS) using the internationally agreed International Labour Organisation (ILO) definition. The ILO definition is based on the number of people without jobs who are looking for and available to start work. The LFS unemployment figures which are subject to sampling differences are not available for smaller areas. The Claimant Count is released on a monthly basis and is available down to ward level, so is used as a more current indicator of unemployment levels.

Table 8: Unemployment Rates: ILO Definition; April 2008 - March 2009

Area	April 2008 - March 2009		April 2007 - March 2008	
	ILO Unemployment Rate (working age)	Total Persons ILO Unemployed	ILO Unemployment Rate (working age)	Total Persons ILO Unemployed
United Kingdom	1,891,400	6.4%	1,566,700	5.3%
East Midlands	144,800	6.6%	117,300	5.4%
Leicester Shire	34,400	7.3%	28,500	6.1%
Leicester City	17,800	12.8%	15,800	11.2%
Leicestershire County	16,700	5.0%	12,700	3.9%

Source: Labour Force Survey/Annual Population Survey, Office for National Statistics (Nomis)

Other Department for Work and Pensions Benefits Statistics

Job Seekers Allowance is one of a number of types of benefit which is related to worklessness, and recipients of this benefit constitute the most visible group of people who are out of work. However, many people have been diverted away from Job Seekers Allowance on to other benefits, the largest number being onto Incapacity Benefit. Nationally, the number of people claiming Incapacity Benefit is over three times the number of people out of work and claiming JSA.

The government recently published a Green Paper on welfare reform in which it is argued that to meet the goal of reaching a UK employment rate of 80%, more people on inactive benefits must be moved into work, particularly those who have been on benefits for a long time.

One method of classifying benefit claimants is by breaking them down into statistical groups. This presents the main reason why an individual is claiming benefit. Benefits are arranged hierarchically and claimants are assigned to the top most benefit which they receive. In this way each claimant only appears once, even though they may claim more than one benefit - the total number of working-age people who are claiming one or more key benefits is often used as a proxy for worklessness.

These figures are provided by the Department for Work and Pensions and are updated quarterly.

Table 9: Working-age people claiming one or more key DWP benefit by duration; May 2009

Area	Number	All benefits			Duration (proportion of all claimants)				
		Rate	Previous year number	Previous year rate	<6mths	6mths - 1yr	1yr - 2yrs	2yrs - 5yrs	+5yrs
Blaby	5,440	9.6	4,390	7.7	30%	10%	8%	15%	36%
Charnwood	11,100	10.2	9,100	8.5	30%	11%	10%	15%	35%
Harborough	4,040	8.2	3,200	6.5	31%	10%	8%	14%	36%
Hinckley &	7,260	11.2	5,780	8.9	30%	11%	9%	15%	34%
Melton	2,870	9.6	2,210	7.4	32%	11%	9%	13%	35%
NW	7,070	12.8	5,970	10.8	27%	10%	9%	15%	39%
Oadby and	3,740	10.8	3,090	9.0	30%	11%	10%	14%	34%
Leicester City	41,050	21.4	36,140	18.9	27%	11%	11%	16%	36%
Leicestershire	41,510	10.4	33,730	8.5	30%	10%	9%	15%	36%
Rutland	1,550	6.8	1,270	5.6	28%	10%	10%	15%	37%
East Midlands	411,900	15.0	355,170	13.0	26%	11%	9%	15%	39%
Great Britain	5,818,730	15.7	5,124,110	13.9	25%	10%	9%	15%	40%

Source: Department of Work and Pension (Nomis)

Table 10: Benefit Claimants by Statistical Group - Main reason for claiming benefit; May 2009

Statistical group	East Midlands		Leicester City		Leicestershire County	
	Number	Rate	Number	Rate	Number	Rate
Employment and Support Allowance & Incapacity Benefits	179,470	6.5%	16,050	8.4%	16,690	4.2%
Job Seeker	106,600	3.9%	12,130	6.3%	11,530	2.9%
Lone Parent	46,740	1.7%	5,870	3.1%	3,930	1.0%
Carer	31,490	1.1%	3,010	1.6%	3,500	0.9%
Disabled	28,890	1.1%	2,110	1.1%	3,480	0.9%
Others on income related benefit	12,140	0.4%	1,430	0.7%	1,370	0.3%
Bereaved	6,570	0.2%	450	0.2%	1,020	0.3%
Total	411,900	15.0%	41,050	21.4%	41,510	10.4%

Source: Department of Work and Pension (Nomis)

Note: Benefits are arranged hierarchically and claimants are assigned to the top most benefit they receive. Each claimant appears once only, even though some claim more than one benefit, permitting the estimation of the total number of people claiming one or more benefits. The Statistical Group hierarchy is a) Jobseeker b) ESA & Incapacity benefits c) Lone parents d) Carers e) Other income-related benefits f) Disabled g) Bereaved h) Housing Benefit i) receiving State Pension only. Thus a person who is a lone parent and receives Incapacity Benefit would be classified as receiving incapacity benefits. This is only one of the possible ways in which claimants could be classified and alternative classifications are possible.

For more information about DWP statistics and research www.dwp.gov.uk/asd/data_guide.asp

Definitions

Claimant Count - the count of claimants of unemployment related benefits is based on the administrative records of people claiming these benefits. Since October 1996 this has been the number of people claiming Job Seekers Allowance (JSA). The publication of claimant count figures is normally five weeks after the date to which they refer. The claimant count is accurate down to very small geographic areas and is unaffected by sampling variability since it is a 100% count. This means it can be used as an indicator of those without work down to small areas.

Resident-based Claimant Count Proportions - express the number of claimants resident in an area as a percentage of the working age population resident in that area. Claimant count rates can also be expressed as a proportion of the workforce jobs in an area, however in smaller areas using workforce job-based rates can cause distortions in the rates caused by commuting patterns. Using resident-based proportions avoids this distortion.

Unemployment (LFS ILO definition) - The definition of unemployment is internationally agreed and recommended by the International Labour Organisation (ILO) - an agency of the United Nations. Many countries use this definition. By this definition unemployed people are:

- without a job, want a job, have actively sought work in the last 4 weeks and are available to start work in the next 2 weeks, or
- out of work, have found a job and are waiting to start it in the next 2 weeks

Unemployment Rate (LFS ILO definition) - expresses the number of unemployed people resident in an area as a percentage of the economically active working age population resident in that area.

Labour Force Survey - The Labour Force Survey is a random sample survey which is carried out throughout the UK. It is conducted every three months using around 53,000 households. The survey collects information about the personal circumstances and work of everyone living in these households. The Office for National Statistics (ONS) uses the Labour Force Survey as its source for unemployment data. Unemployment is measured through questions asked in the survey and not by interviewing everybody in the country. Answers are then weighted to represent everyone. As with any sample survey there is sampling variability and this is high for areas below regional level. Therefore, the figures are not reliable for small areas. Each month the ONS releases statistics on the number of people who are unemployed in the United Kingdom for the latest available 3-month rolling period.

Economically Active - people aged 16 or over who are either in employment or are unemployed (LFS ILO definition)

Economically Inactive - people aged 16 or over who are neither in employment nor unemployed (LFS ILO definition) - e.g. they do not have a job and do not want a job. This group includes, for example, those who are looking after the family and/or home or retired.

Working Age Population - Working age is defined as 16-64 for males and 16-59 for females. The working age population figures are derived from mid-year 2006 population estimates.

Benefit Claimants Statistical Group - Benefits are arranged hierarchically and claimants are assigned to the top most benefit they receive. Each claimant appears once only, even though some claim more than one benefit, permitting the estimation of the total number of people claiming one or more benefits. The Statistical Group hierarchy is a) Jobseeker b) Incapacity benefits c) Lone parents d) Carers e) Other income-related benefits f) Disabled g) Bereaved h) Housing Benefit i) receiving State Pension only. Thus a person who is a lone parent and receives Incapacity Benefit would be classified as receiving incapacity benefits. The total number of working-age people who are claiming one or more key benefits is often used as a proxy for worklessness. This is only one of the possible ways in which claimants could be classified and alternative classifications are possible.

For further information on unemployment statistics please refer to the document entitled 'How exactly is unemployment measured?' which is produced by the Office for National Statistics:

www.statistics.gov.uk/downloads/theme_labour/unemployment.pdf

For further information about Department of Work and Pensions statistics and research:

www.dwp.gov.uk/asd/data_guide.asp

For enquiries about the Unemployment Bulletin please contact Joelle Bradly on 0116 305 7341

**Claimant Count (JSA) Ward Data
October 2009**

			Blaby District					
			Total	Last month	Last year	Male %	Female %	Total %
Code	Wards (resident-based proportions)							
1	31UBFY	Blaby South	92	83	50	5.3	1.2	3.4
2	31UBFZ	Cosby with South Whetstone	66	59	34	2.6	1.8	2.2
3	31UBGA	Countesthorpe	94	92	51	2.7	1.8	2.3
4	31UBGB	Croft Hill	30	30	14	2.4	2.2	2.3
5	31UBGC	Ellis	81	82	37	3.8	1.3	2.6
6	31UBGD	Enderby and St. John's	97	96	52	5.9	1.5	3.7
7	31UBGE	Fairstone	80	71	53	4.3	1.8	3.1
8	31UBGF	Forest	106	107	45	2.8	2.1	2.5
9	31UBGG	Millfield	57	54	28	6.1	2.7	4.5
10	31UBGH	Muxloe	59	60	28	3.4	1.5	2.5
11	31UBGJ	Narborough and Littlethorpe	85	97	32	3.4	1.6	2.6
12	31UBGK	Normanton	33	35	15	2.3	1.8	2.1
13	31UBGL	North Whetstone	92	94	43	3.8	1.8	2.8
14	31UBGM	Pastures	72	70	32	2.6	2.0	2.3
15	31UBGN	Ravenhurst and Fosse	195	189	95	5.9	2.6	4.4
16	31UBGP	Saxondale	145	143	91	3.4	2.4	3.0
17	31UBGQ	Stanton and Flamville	114	112	66	3.1	2.0	2.6
18	31UBGR	Winstanley	152	157	88	4.1	2.6	3.4
		Blaby District	1,650	1,650	854	3.7	2.0	2.9

These figures are suppressed as value is 1 or 2.

Source: Office for National Statistics

If you require further information please contact Joelle Bradly, Policy, Performance & Research, Chief Executive's Department, Leicestershire County Council on 0116 3055883.

**Claimant Count (JSA) Ward Data
October 2009**

Charnwood Borough

			Total	Last month	Last year	Male %	Female %	Total %
Code	Wards (resident-based proportions)							
1	31UCGG	Anstey	122	128	60	4.5	1.9	3.3
2	31UCGH	Barrow and Sileby West	103	98	39	3.4	2.0	2.8
3	31UCGJ	Birstall Wanlip	83	82	45	3.4	1.9	2.7
4	31UCGK	Birstall Watermead	134	126	65	4.9	1.6	3.4
5	31UCGL	East Goscote	44	45	18	3.5	1.1	2.4
6	31UCGM	Forest Bradgate	39	45	17	2.5	1.1	1.9
7	31UCGN	Loughborough Ashby*	136	134	59	2.9	1.4	2.2
8	31UCGP	Loughborough Dishley and Hathern*	129	120	67	4.7	1.6	3.2
9	31UCGQ	Loughborough Garendon*	113	122	65	3.7	1.8	2.8
10	31UCGR	Loughborough Hastings*	276	252	161	9.5	3.5	6.7
11	31UCGS	Loughborough Lemyngton*	248	248	126	7.9	2.7	5.5
12	31UCGT	Loughborough Nanpantan*	32	37	20	1.0	0.5	0.8
13	31UCGU	Loughborough Outwoods*	75	76	32	2.7	1.7	2.3
14	31UCGW	Loughborough Shelthorpe*	221	215	123	7.2	1.9	4.6
15	31UCGX	Loughborough Southfields*	113	117	56	3.0	1.4	2.3
16	31UCGY	Loughborough Storer*	144	137	66	3.5	2.0	2.8
17	31UCGZ	Mountsorrel	158	166	80	5.0	1.9	3.5
18	31UCHA	Queniborough	30	31	24	2.1	1.3	1.7
19	31UCHB	Quorn and Mountsorrel Castle	97	102	51	3.4	1.5	2.5
20	31UHC	Rothley and Thurcaston	66	67	32	2.6	1.0	1.8
21	31UCHD	Shepshed East	123	118	62	3.7	1.6	2.7
22	31UCHE	Shepshed West	119	118	57	4.2	1.3	2.8
23	31UCHF	Sileby	172	166	76	5.5	1.7	3.7
24	31UCHG	Syston East	106	112	43	3.8	1.9	2.9
25	31UCHH	Syston West	126	120	69	4.1	2.0	3.1
26	31UCHJ	The Wolds	33	34	10	2.0	1.6	1.8
27	31UCHK	Thurmaston	230	233	135	5.5	2.5	4.1
28	31UACL	Wreake Villages	24	25	13	2.2	0.4	1.3
		Charnwood Borough	3,296	3,274	1,671	4.1	1.8	3.0
		*Loughborough including Hathern	1487	1458	775	4.6	1.9	3.4

These figures are suppressed as value is 1 or 2.

Market Town geographies defined by Leicestershire County Council and figures calculated using ONS Claimant Count (JSA) figures and denominators.

Source: Office for National Statistics

If you require further information please contact Joelle Bradly, Policy, Performance & Research, Chief Executive's Department, Leicestershire County Council on 0116 3055883.

**Claimant Count (JSA) Ward Data
October 2009**

Harborough District

Code	Wards (resident-based proportions)	Total	Last month	Last year	Male	Female	Total
					%	%	%
1	31UDGD Billesdon	12	12	8	0.9	1.4	1.1
2	31UDGE Bosworth	35	31	12	3.1	1.5	2.4
3	31UDGF Broughton Astley - Astley	31	29	15	2.2	2.0	2.1
4	31UDGG Broughton Astley - Broughton	30	32	16	2.1	1.3	1.7
5	31UDGH Broughton Astley - Primethorpe	31	37	12	3.4	1.8	2.7
6	31UDGJ Broughton Astley - Sutton	44	40	13	4.5	1.9	3.3
7	31UDGK Dunton	23	21	7	2.2	0.9	1.6
8	31UDGL Fleckney	86	92	31	3.9	1.6	2.8
9	31UDGM Glen	51	52	34	2.3	1.9	2.1
10	31UDGN Kibworth	70	81	36	2.7	1.1	1.9
11	31UDGP Lubenham	40	32	13	1.7	2.9	2.1
12	31UDGQ Lutterworth Brookfield	29	32	18	2.6	1.2	1.9
13	31UDGR Lutterworth Orchard	28	27	14	3.1	1.2	2.2
14	31UDGS Lutterworth Springs	36	37	22	3.4	2.0	2.7
15	31UDGT Lutterworth Swift	49	54	19	4.0	2.4	3.2
16	31UDGU Market Harborough - Great Bowden*	121	130	76	3.7	2.0	2.8
17	31UDGW Market Harborough - Little Bowden*	67	59	28	3.0	1.4	2.3
18	31UDGX Market Harborough - Logan*	44	46	24	2.2	1.4	1.8
19	31UDGY Market Harborough - Welland*	112	118	66	4.9	1.7	3.4
20	31UDGZ Misterton	30	31	14	2.9	1.0	2.0
21	31UDHA Nevill	22	21	11	2.6	0.8	1.7
22	31UDHB Peatling	27	25	8	2.5	1.4	2.0
23	31UDHC Thurnby and Houghton	94	88	48	3.3	2.1	2.7
24	31UDHD Tilton	18	16	4	2.3	0.5	1.5
25	31UDHE Ullesthorpe	29	27	10	2.5	1.6	2.1
	Harborough District	1,159	1,170	559	3.0	1.6	2.3
	* Market Harborough	344	353	194	3.6	1.7	2.7

These figures are suppressed as value is 1 or 2.

Market Town geographies defined by Leicestershire County Council and figures calculated using ONS Claimant Count (JSA) figures and denominators.

Source: Office for National Statistics

If you require further information please contact Joelle Bradly, Policy, Performance & Research, Chief Executive's Department, Leicestershire County Council on 0116 3055883.

**Claimant Count (JSA) Ward Data
October 2009**

Hinckley & Bosworth Borough

Code	Wards (resident-based proportions)	Total	Last month	Last year	Male	Female	Total
					%	%	
1	31UEFU Ambien	42	36	17	2.2	1.6	1.9
2	31UEFW Barlestone Nailstone & Osbaston	36	40	25	2.1	1.2	1.7
3	31UEFX Barwell	238	234	148	5.7	2.6	4.2
4	31UEFY Burbage St. Catherines & Lash Hill*	111	105	60	4.6	2.0	3.4
5	31UEFZ Burbage Sketchley and Stretton*	115	113	57	2.6	1.5	2.1
6	31UEGA Cadeby Carlton & Market Bosworth	34	34	16	2.1	1.3	1.7
7	31UEGB Earl Shilton*	321	329	168	7.8	3.2	5.6
8	31UEGC Groby	85	82	48	2.8	1.2	2.0
9	31UEGD Hinckley Castle*	163	166	109	5.3	2.1	3.9
10	31UEGE Hinckley Clarendon*	197	177	88	4.1	2.7	3.4
11	31UEGF Hinckley De Montfort*	212	206	72	4.8	2.4	3.6
12	31UEGG Hinckley Trinity*	182	192	101	6.6	2.0	4.4
13	31UEGH Markfield Stanton and Fieldhead	83	86	43	3.6	1.4	2.6
14	31UEGJ Newbold Verdon with Desford & Peckleton	110	114	56	3.0	1.3	2.2
15	31UEGK Ratby Bagworth and Thornton	119	114	43	3.9	1.9	2.9
16	31UEGL Twycross & Witherley with Sheepy	27	36	14	1.5	1.5	1.5
	Hinckley & Bosworth District	2,075	2,064	1,065	4.3	2.0	3.2
	* Hinckley (inc. Burbage & Earl Shilton)	1301	1288	655	5.1	2.3	3.8

These figures are suppressed as value is 1 or 2.

Market Town geographies defined by Leicestershire County Council and figures calculated using ONS Claimant Count (JSA) figures and denominators.

Source: Office for National Statistics

If you require further information please contact Joelle Bradly, Policy, Performance & Research, Chief Executive's Department, Leicestershire County Council on 0116 3055883.

**Claimant Count (JSA) Ward Data
October 2009**

			Leicester City					
			Total	Last month	Last year	Male %	Female %	Total %
Code	Wards (resident-based proportions)							
1	00FNNF	Abbey	732	683	494	13.0	4.8	9.0
2	00FNNG	Aylestone	374	370	244	8.5	2.6	5.6
3	00FNNH	Beaumont Leys	869	873	605	11.8	4.6	8.2
4	00FNNJ	Belgrave	489	473	312	8.5	5.2	6.9
5	00FNNK	Braunstone Park & Rowley Fields	877	831	491	12.4	4.6	8.5
6	00FNNL	Castle	856	835	568	8.3	3.1	5.8
7	00FNNM	Charnwood	655	616	450	12.6	5.0	8.8
8	00FNNN	Coleman	639	636	436	10.5	4.7	7.7
9	00FNNP	Evington	338	321	187	7.9	3.6	5.8
10	00FNNQ	Eyres Monsell	510	484	314	11.6	4.3	7.9
11	00FNNR	Fosse	477	480	235	8.2	3.5	6.0
12	00FNNS	Freemen	595	582	363	12.4	4.7	8.4
13	00FNNT	Humberstone and Hamilton	552	525	308	8.1	4.1	6.2
14	00FNNU	Knighon	330	327	194	5.0	2.0	3.5
15	00FNNW	Latimer	453	449	280	6.8	4.7	5.8
16	00FNNX	New Parks	874	842	556	13.6	4.7	9.2
17	00FNNY	Rushey Mead	490	502	319	6.3	3.3	4.9
18	00FNNZ	Spinney Hills	1233	1233	873	13.2	5.0	9.2
19	00FNPA	Stoneygate	854	856	595	9.8	4.1	7.1
20	00FNPB	Thurncourt	366	361	223	9.5	3.5	6.6
21	00FNPC	Westcotes	495	482	260	9.5	4.2	7.0
22	00FNPD	Western Park	340	347	176	7.9	2.7	5.4
		Leicester	13,398	13,108	8,483	9.7	4.1	7.0

These figures are suppressed as value is 1 or 2.

Source: Office for National Statistics

If you require further information please contact Joelle Bradly, Policy, Performance & Research, Chief Executive's Department, Leicestershire County Council on 0116 3055883.

**Claimant Count (JSA) Ward Data
October 2009**

Melton Borough

Code	Wards (resident-based proportions)	Melton Borough			Male	Female	Total
		Total	Last month	Last year	%	%	%
1	3IUGFT Asfordby	52	60	42	3.5	1.6	2.6
2	3IUGFU Bottesford	39	38	15	2.5	1.3	1.9
3	3IUGFW Croxton Kerrial	19	24	10	1.7	1.7	1.7
4	3IUGFX Frisby-on-the-Wreake	11	8	7	0.9	1.2	1.0
5	3IUGFY Gaddesby	14	10	9	1.5	1.4	1.5
6	3IUGFZ Long Clawson and Stathern	24	31	22	1.6	0.3	0.9
7	3IUGGA Melton Craven*	75	72	32	4.3	2.4	3.4
8	3IUGGB Melton Dorian*	104	93	33	4.6	1.6	3.1
9	3IUGGC Melton Egerton*	110	111	53	6.6	2.9	4.8
10	3IUGGD Melton Newport*	77	78	33	4.0	1.3	2.8
11	3IUGGE Melton Sysonby*	87	92	38	3.8	1.4	2.6
12	3IUGGF Melton Warwick*	77	84	36	4.4	2.7	3.6
13	3IUGGG Old Dalby	27	28	10	2.6	1.7	2.2
14	3IUGGH Somerby	19	16	12	2.1	1.4	1.7
15	3IUGGJ Waltham-on-the-Wolds	14	10	5	2.0	0.9	1.5
16	3IUGGK Wymondham	27	23	17	3.1	2.1	2.7
	Melton Borough	776	778	374	3.4	1.7	2.6
	* Melton Mowbray	530	530	225	4.6	2.0	3.3

These figures are suppressed as value is 1 or 2.

Market Town geographies defined by Leicestershire County Council and figures calculated using ONS Claimant Count (JSA) figures and denominators.

Source: Office for National Statistics

If you require further information please contact Joelle Bradly, Policy, Performance & Research, Chief Executive's Department, Leicestershire County Council on 0116 3055883.

**Claimant Count (JSA) Ward Data
October 2009**

North West Leicestershire District

		Total	Last month	Last year	Male %	Female %	Total %
Code	Wards (resident-based proportions)						
1	3IUHFZ Appleby	28	28	8	2.9	1.4	2.2
2	3IUHGA Ashby Castle*	20	17	13	1.2	0.0	1.2
3	3IUHGB Ashby Holywell*	95	90	41	4.5	1.8	3.2
4	3IUHGC Ashby Ivanhoe*	83	78	41	5.1	1.1	3.2
5	3IUHGD Bardon**	54	45	25	3.5	1.6	2.6
6	3IUHGE Breedon	27	27	14	2.8	0.9	1.9
7	3IUHGF Castle Donington	133	140	70	4.1	1.9	3.1
8	3IUHGG Coalville**	158	142	83	6.7	3.0	5.0
9	3IUHGH Greenhill**	196	197	110	6.5	2.9	4.8
10	3IUHGJ Hugglescote**	85	86	37	4.0	1.7	2.9
11	3IUHGK Ibstock and Heather	145	140	74	4.7	1.9	3.4
12	3IUHGL Kegworth and Whatton	65	64	32	3.2	1.2	2.3
13	3IUHGM Measham	109	109	50	4.5	2.2	3.4
14	3IUHGN Moira	81	80	38	3.5	2.0	2.8
15	3IUHGP Oakthorpe and Donisthorpe	44	54	17	3.5	1.7	2.6
16	3IUHGQ Ravenstone and Packington	37	41	17	3.4	0.0	2.5
17	3IUHGR Snibston**	102	98	66	4.4	1.7	3.1
18	3IUHGS Thringstone**	86	73	40	4.1	2.3	3.2
19	3IUHGT Valley	91	84	45	4.1	2.6	3.4
20	3IUHGU Whitwick**	107	103	69	3.4	1.8	2.7
	NW Leicestershire District	1,746	1,696	890	4.2	1.9	3.2
	* Ashby de la Zouch	198	185	95	4.0	1.4	2.8
	** Coalville	788	744	430	4.8	2.2	3.6

These figures are suppressed as value is 1 or 2.

Market Town geographies defined by Leicestershire County Council and figures calculated using ONS Claimant Count (JSA) figures and denominators.

Source: Office for National Statistics

If you require further information please contact Joelle Bradly, Policy, Performance & Research, Chief Executive's Department, Leicestershire County Council on 0116 3055883.

**Claimant Count (JSA) Ward Data
October 2009**

Oadby & Wigston Borough

Code	Wards (resident-based proportions)	Total	Last month	Last year	Male	Female	Total	
					%	%		%
1	31UJFL	Oadby Brocks Hill*	63	76	37	3.7	2.0	2.9
2	31UJFM	Oadby Grange*	61	66	38	1.7	0.9	1.3
3	31UJFN	Oadby St. Peter's*	105	100	50	7.1	2.8	4.9
4	31UJFP	Oadby Uplands*	82	82	49	4.5	1.9	3.2
5	31UJFQ	Oadby Woodlands*	77	79	31	3.7	1.5	2.6
6	31UJFR	South Wigston	251	259	124	7.9	2.9	5.4
7	31UJFS	Wigston All Saints**	87	99	55	3.1	1.7	2.4
8	31UJFT	Wigston Fields**	173	169	96	6.6	2.3	4.6
9	31UJFU	Wigston Meadowcourt**	113	111	69	3.8	1.6	2.8
10	31UJFW	Wigston St. Wolstan's**	110	104	58	4.0	1.8	3.0
		Oadby & Wigston Borough	1,122	1,145	607	4.5	1.9	3.2
		* Oadby	388	403	205	3.7	1.7	2.7
		** Wigston	483	483	278	4.4	1.8	3.2

These figures are suppressed as value is 1 or 2.

Market Town geographies defined by Leicestershire County Council and figures calculated using ONS Claimant Count (JSA) figures and denominators.

Source: Office for National Statistics

If you require further information please contact Joelle Bradly, Policy, Performance & Research, Chief Executive's Department, Leicestershire County Council on 0116 3055883.

**Claimant Count (JSA) Ward Data
October 2009**

			Rutland					
Code	Wards (resident-based proportions)		Total	Last month	Last year	Male %	Female %	Total %
1	00FPMS	Braunston and Belton	14	8	4	2.7	1.2	1.9
2	00FPMT	Cottesmore	20	25	22	1.0	1.2	1.1
3	00FPMU	Exton	12	13	6	0.7	1.4	0.9
4	00FPMW	Greetham	17	19	10	0.9	2.0	1.2
5	00FPMX	Ketton	28	27	8	2.4	1.3	1.9
6	00FPMY	Langham	13	13	10	2.9	#	1.7
7	00FPMZ	Lyddington	10	12	6	2.1	#	1.3
8	00FPNA	Martinsthorpe	15	9	4	3.1	1.4	2.3
9	00FPNB	Normanton	31	29	12	1.7	1.6	1.7
10	00FPNC	Oakham North East*	31	37	14	2.2	1.0	1.6
11	00FPND	Oakham North West*	35	33	11	2.2	1.5	1.9
12	00FPNE	Oakham South East*	20	20	8	2.8	#	1.5
13	00FPNF	Oakham South West*	31	35	10	3.2	1.5	2.4
14	00FPNG	Ryhall and Casterton	25	29	16	1.9	0.9	1.4
15	00FPNH	Uppingham	48	56	19	2.3	1.0	1.7
16	00FPNJ	Whissendine	18	17	10	2.2	2.3	2.2
		Rutland	368	382	170	2.0	1.2	1.6
		*Oakham	117	125	43	2.5	1.0	1.8

These figures are suppressed as value is 1 or 2.

Market Town geographies defined by Leicestershire County Council and figures calculated using ONS Claimant Count (JSA) figures and denominators.

Source: Office for National Statistics

If you require further information please contact Joelle Bradly, Policy, Performance & Research, Chief Executive's Department, Leicestershire County Council on 0116 3055883.