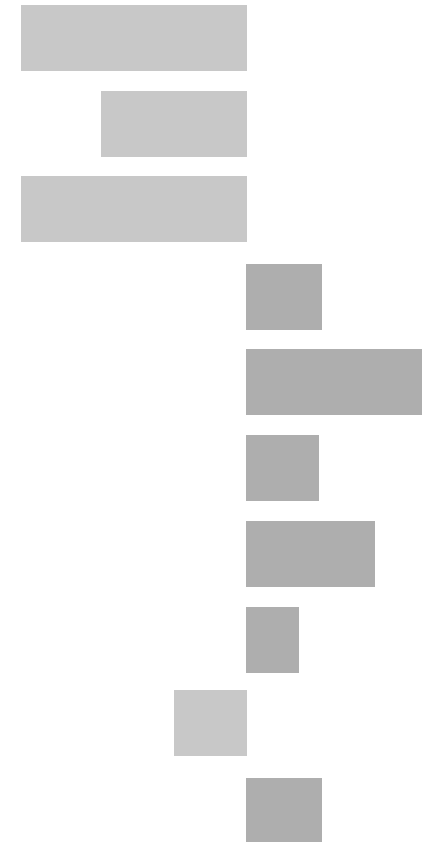


# Castle Donington Electoral Division

## 2011 Census Key Statistics

Alex Lea  
May 2013

Research and Insight Team  
Leicestershire County Council



**Alex Lea**

Research & Insight Manager

Research & Insight Team  
Strategy, Partnerships & Communities  
Leicestershire County Council  
County Hall  
Glenfield  
Leicester LE3 8RB

Tel 0116 305 6803

Email [alex.lea@leics.gov.uk](mailto:alex.lea@leics.gov.uk)

Produced by the Research and Insight Team at Leicestershire County Council.

Whilst every effort has been made to ensure the accuracy of the information contained within this report, Leicestershire County Council cannot be held responsible for any errors or omission relating to the data contained within the report.

## CONTENTS

### Introduction

About this Report	4
2011 Census	4
Data	5
Census Geography	5
Indicator Changes 2001-11	6

### Population

KS101EW - Usual Resident Population	7
KS102EW - Age Structure	7

### Households

KS105EW - Household Composition	8
KS402EW - Tenure	9

### Health and Caring

KS301EW - Health and Provision of Unpaid Care	9
---	---

### Ethnicity

KS201EW - Ethnic Group	10
------------------------	----

### Economy

KS601EW - Economic Activity	11
KS605EW - Industry	12

### Transport

KS404EW - Car and Van Availability	13
QS701EW - Method of Travel to Work	13

## INTRODUCTION

### ABOUT THIS REPORT

This report provides a broad overview of the 2011 Census Key Statistics data, released by the Office for National Statistics on 30th January 2013, as part of the Second Release. This report summarises a selection of key headline datasets of this release for Leicestershire Electoral Divisions (EDs).

The Research and Insight Team at Leicestershire County Council has used data from the Second release to create an interactive Tableau dashboard containing 32 datasets covering the following geographies:

- England
- East Midlands
- East Midlands counties . Including Leicestershire
- Leicester City and Rutland Unitary Authorities
- Leicestershire districts

In addition, a headline report covers the results for Leicestershire and the seven districts that make up the county. The dashboard and report are available at the following links:

#### Census 2011 Key Statistics Dashboard

<http://public.tableausoftware.com/views/LAKeyStatsDashboard/Dashboard>

May 2013

#### Census 2011 Key Statistics Headline Report

[http://www.lsr-online.org/reports/census\\_2011\\_key\\_statistics\\_headline\\_report/download/1/Census%202011%20Second%20Release%20FINAL.pdf](http://www.lsr-online.org/reports/census_2011_key_statistics_headline_report/download/1/Census%202011%20Second%20Release%20FINAL.pdf)

### 2011 CENSUS

Census statistics help paint a picture of the nation and how we live. They provide a detailed snapshot of the population and its characteristics, and underpin funding allocation to provide public services.<sup>1</sup> Data from the 2011 Census is made available at a variety of different levels of geography and in various releases.

The Key Statistics data covers a broad range of socio-economic topics, including data on ethnicity, health and employment. Each Key Statistic dataset is referred to by its unique three-digit code with the 'KS' prefix to denote a Key statistic (e.g. KS101). These are used throughout the report.

A full list of the 35 Key Statistics data tables are available here:

<http://www.ons.gov.uk/ons/publications/re-reference-tables.html?edition=tcm%3A77-286262>

<sup>1</sup> Office for National Statistics (ONS), 2013.

Further results from the census will be released throughout 2013, for more information, please visit:

<http://www.lsr-online.org/census-2011.html>

More information on the 2011 Census can be found here:

<http://www.ons.gov.uk/ons/guide-method/census/2011/index.html>

## DATA

Data has been compiled for Leicestershire Electoral Divisions, covering the key datasets from the 2011 Census Key statistics.

Figures for 2011 and 2001 are included, along with the overall and percentage change between the two censuses. Data for each indicator is presented in a table and chart.

Population data is displayed in a table, a population pyramid and a chart showing percentage change between 2001 and 2011. All other data is displayed in tables, and charts. Charts for change between 2001 and 2011 are coloured according to the degree of change between the two censuses; grey corresponds to smallest change and green the largest change. A marker indicates the average figure for all Leicestershire Electoral Divisions.

## GEOGRAPHY

Maps for all County Council Electoral Divisions can be found here:

[http://www.leics.gov.uk/index/your\\_council/local\\_democracy/conductofcouncillorsandemployees/electoraldivisionmapsindex/electoraldivisionmaps.htm](http://www.leics.gov.uk/index/your_council/local_democracy/conductofcouncillorsandemployees/electoraldivisionmapsindex/electoraldivisionmaps.htm)

As Census data is not made available for Electoral Divisions, smaller areas, called Lower Super Output Areas (LSOAs) have been used as building blocks for the figures included in this report. LSOAs are small parcels of geography, containing a minimum of 1,000 people, a maximum of 3,000 and an average of 1,500. LSOAs were initially developed for the 2001 Census and are used to release a range of neighbourhood-level datasets from various sources. There are 396 LSOAs in Leicestershire.

In some instances, LSOAs do not fit neatly within Electoral Divisions and in these cases, population weighted centroids - representing the 'centre of gravity' for population within an area - have been used in order to assign each LSOA to an Electoral Division. Electoral Divisions that fall within this category are indicated with a (\*).

More information on Lower Super Output Areas can be found here:

<http://www.ons.gov.uk/ons/guide-method/geography/beginner-s-guide/census/super-output-areas--soas-/index.html>

## INDICATOR CHANGES 2001-11

The following questions were asked in slightly different ways in 2011 compared to 2001. As such, care should be taken when making comparison between years.

### **KS201EW : Ethnic Group**

Asian/Asian British: Chinese  
Mixed/multiple ethnic group: Other Mixed  
Mixed/multiple ethnic group: White and Asian  
Mixed/multiple ethnic group: White and Black African  
Mixed/multiple ethnic group: White and Black Caribbean  
Other ethnic group: Any other ethnic group  
White: English/Welsh/Scottish/Northern Irish/British  
White: Other White

### **KS301EW : Health and Provision of Unpaid Care**

Day-to-day activities limited  
Day-to-day activities limited: Age 16 to 64  
Day-to-day activities not limited  
Fair health  
Very/ bad Health  
Very/ good Health

### **KS601EW : Economic Activity**

All usual residents aged 16 and over  
Economically active: Employee: Full-time  
Economically active: Employee: Part-time  
Economically active: Full-time student

Economically active: Self-employed  
Economically active: Unemployed  
Economically inactive: Long-term sick or disabled  
Economically inactive: Looking after home or family  
Economically inactive: Other  
Economically inactive: Retired  
Economically inactive: Student (including full-time)  
Long-term unemployed  
Unemployed: Age 50 and over  
Unemployed: Never worked

### **KS605EW : Industry**

All usual residents aged 16 and over in employment  
A Agriculture, forestry and fishing  
B Mining and quarrying  
C Manufacturing  
D, F Electricity, gas, steam, air conditioning supply etc  
F Construction  
G Wholesale and retail trade; repair of motor vehicles etc  
H, J Transport, storage, information and communication  
I Accommodation and food service activities  
K Financial and insurance activities  
L,M,N Real estate activities Professional, scientific etc  
O Public administration and defence etc  
P Education  
Q Human health and social work activities  
R, S, T, U Other

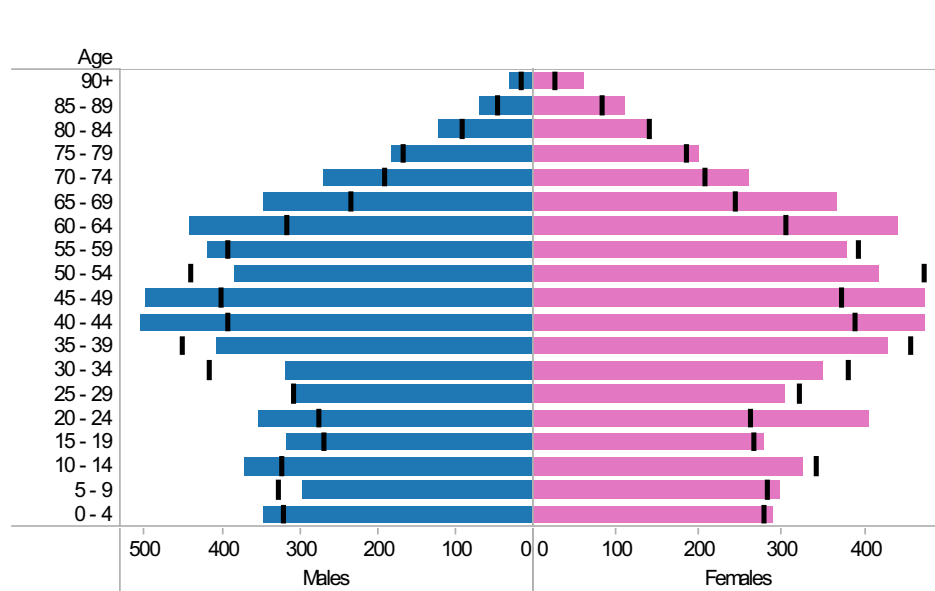
# Castle Donington ED: KS101EW : Usual Resident Population, KS102EW : Age Structure

■ Males
 ■ Females
 ■ Persons

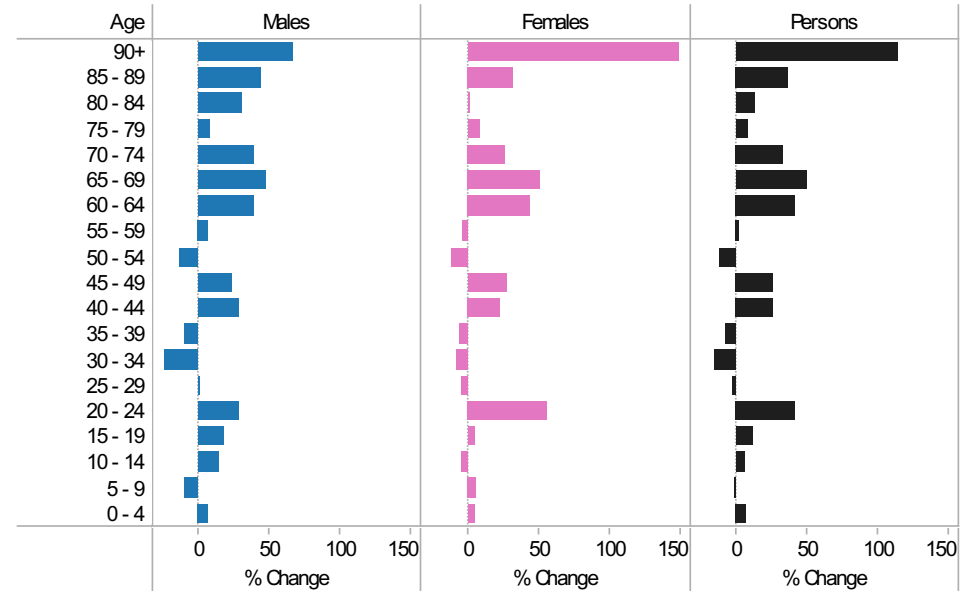
## 2001-11 Population by sex and quinary age band

Age	Males			Females			Persons		
	2001	2011	Change 2001-11	2001	2011	Change 2001-11	2001	2011	Change 2001-11
90+	18	30	12	25	62	37	43	92	49
85 - 89	48	69	21	82	109	27	130	178	48
80 - 84	93	121	28	138	140	2	231	261	30
75 - 79	169	183	14	184	199	15	353	382	29
70 - 74	194	269	75	206	260	54	400	529	129
65 - 69	236	347	111	242	366	124	478	713	235
60 - 64	318	442	124	304	439	135	622	881	259
55 - 59	394	419	25	390	378	-12	784	797	13
50 - 54	442	384	-58	470	418	-52	912	802	-110
45 - 49	404	498	94	370	472	102	774	970	196
40 - 44	395	506	111	386	473	87	781	979	198
35 - 39	454	407	-47	454	427	-27	908	834	-74
30 - 34	419	318	-101	379	350	-29	798	668	-130
25 - 29	311	308	-3	319	304	-15	630	612	-18
20 - 24	277	353	76	260	405	145	537	758	221
15 - 19	270	316	46	265	278	13	535	594	59
10 - 14	325	371	46	339	326	-13	664	697	33
5 - 9	329	297	-32	280	298	18	609	595	-14
0 - 4	324	347	23	276	290	14	600	637	37
All Ages	5,420	5,985	565	5,369	5,994	625	10,789	11,979	1,190

## 2011 (coloured bars) and 2001 (black marks) population by sex and quinary age age

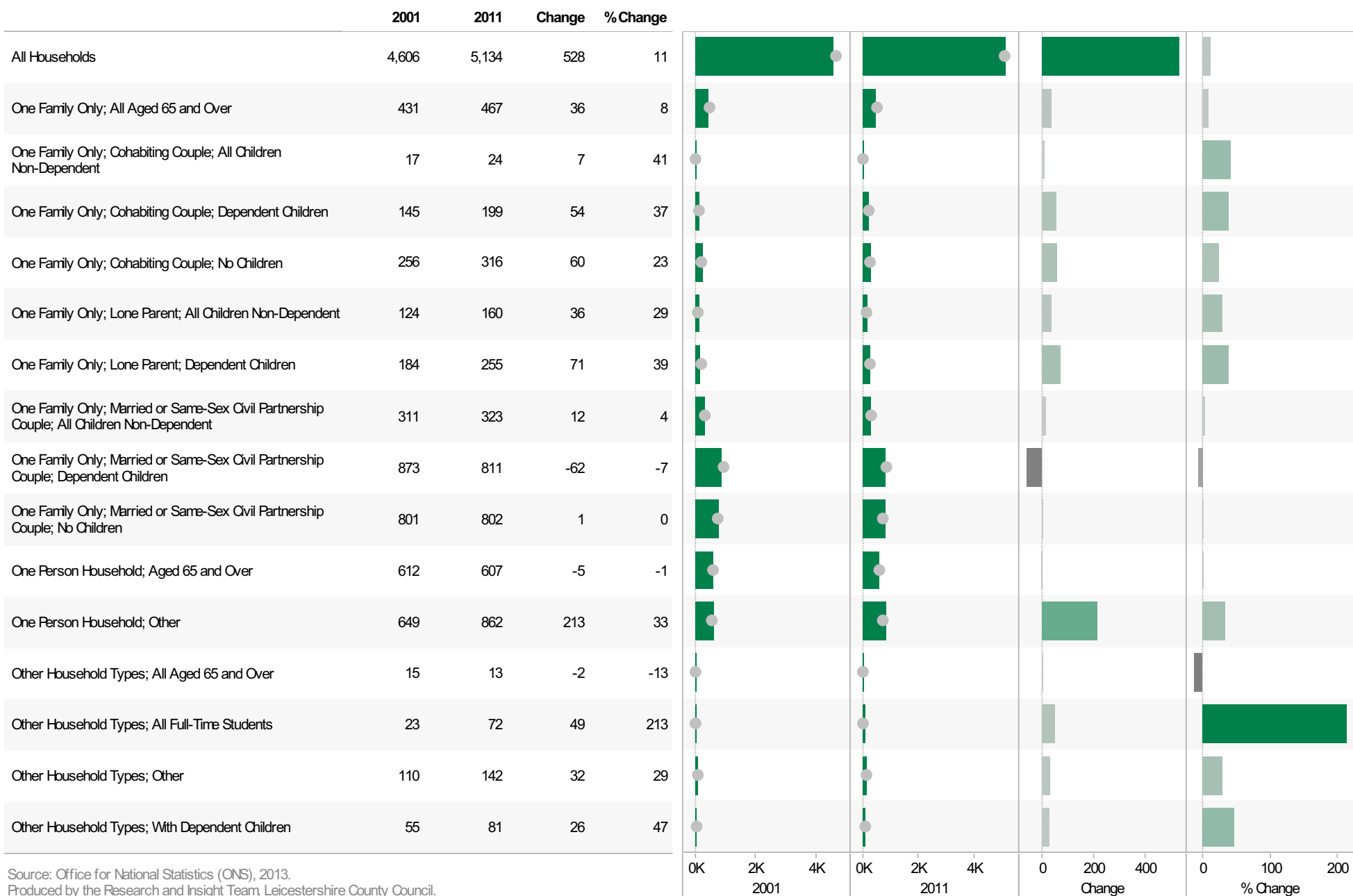


## 2001-11 Percentage change by sex and quinary age band



## Castle Donington ED KS105EW : Household Composition, 2001-11

Coloured bar - data for Electoral Division  
Grey circle - average for all Leicestershire Electoral Divisions

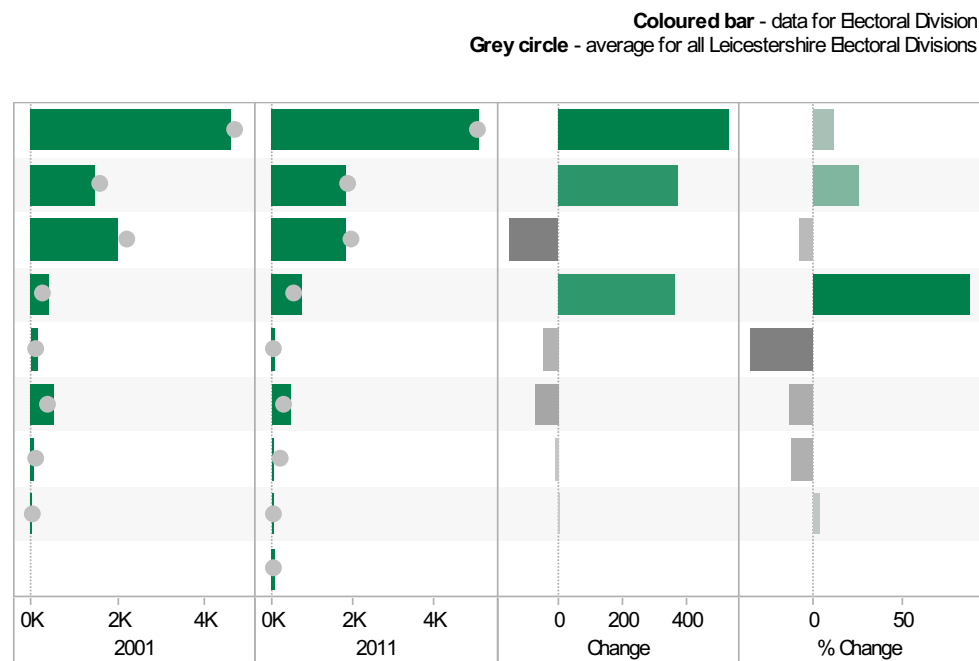


Source: Office for National Statistics (ONS), 2013.  
Produced by the Research and Insight Team, Leicestershire County Council.



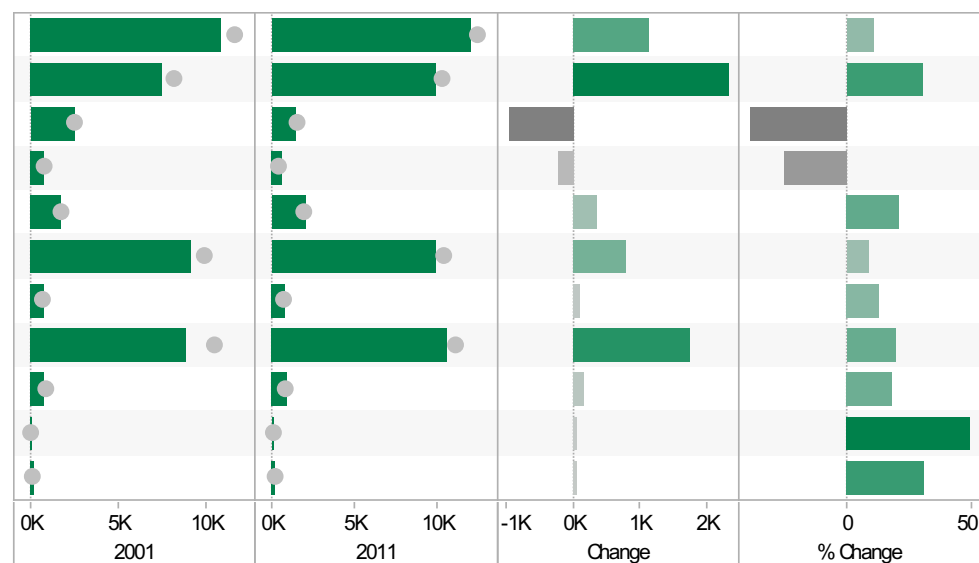
## Castle Donington ED KS402EW: Tenure, 2001-11

	2001	2011	Change	% Change
All Households	4,609	5,134	525	11
Owned; Owned Outright	1,451	1,824	373	26
Owned; Owned with a Mortgage or Loan	2,007	1,856	-151	-8
Private Rented; Private Landlord or Letting Agency	409	769	360	88
Private Rented; Other	126	81	-45	-36
Social Rented; Rented from Council (Local Authority)	523	452	-71	-14
Social Rented; Other	67	59	-8	-12
Shared Ownership (Part Owned and Part Rented)	26	27	1	4
Living Rent Free		66		



## Castle Donington ED KS301EW: Health and Provision of Unpaid Care, 2001-11

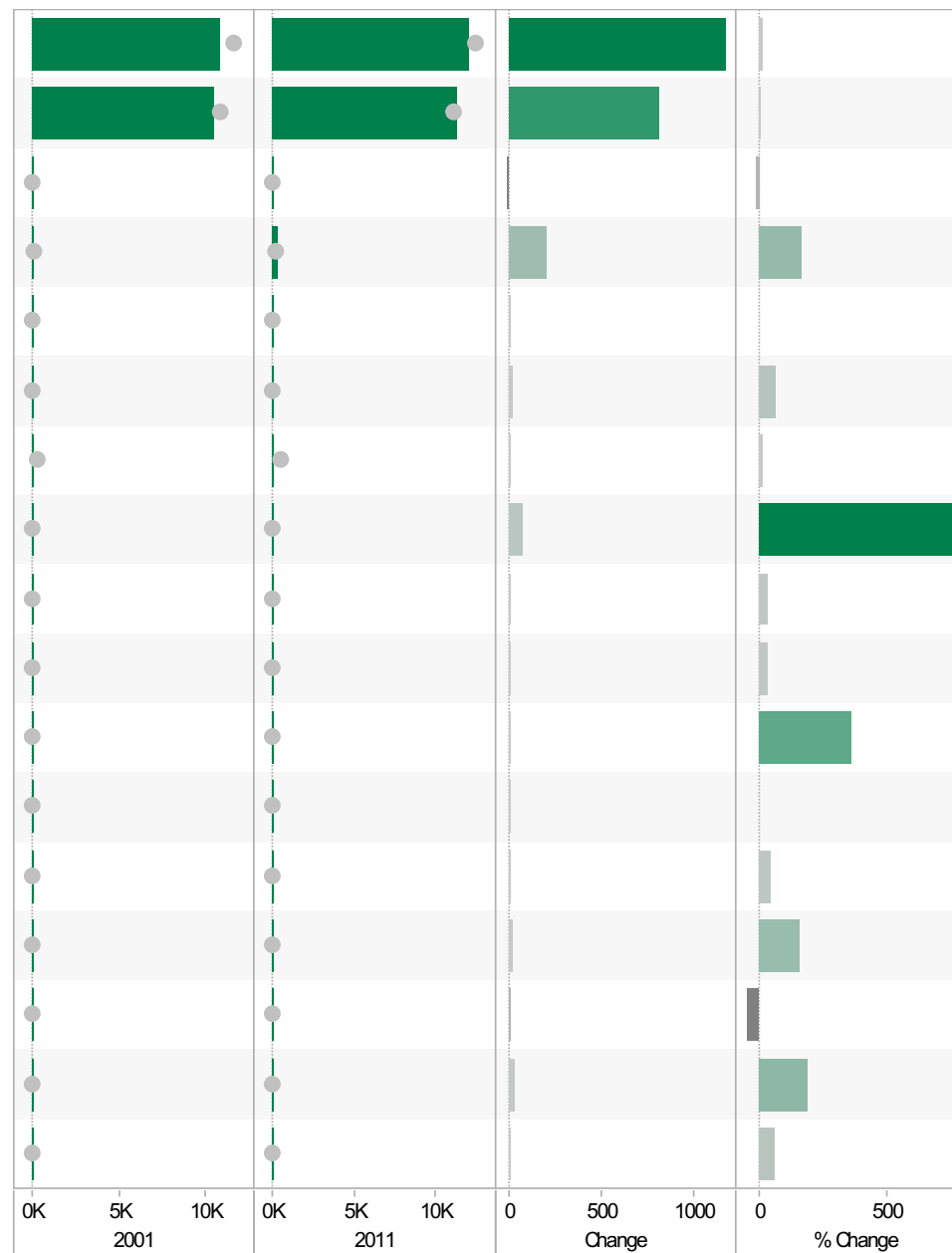
	2001	2011	Change	% Change
All usual residents	10,823	11,979	1,156	11
Very/ good Health	7,532	9,853	2,321	31
Fair health	2,476	1,516	-960	-39
Very/ bad Health	815	610	-205	-25
Day-to-day activities limited	1,698	2,058	360	21
Day-to-day activities not limited	9,125	9,921	796	9
Day-to-day activities limited a lot: Age 16 to 64	783	884	101	13
Provides no unpaid care	8,808	10,553	1,745	20
Provides 1 to 19 hours unpaid care a week	831	984	153	18
Provides 20 to 49 hours unpaid care a week	126	188	62	49
Provides 50 or more hours unpaid care a week	193	254	61	32



**Castle Donington ED**  
**KS201EW : Ethnic Group, 2001-11**

**Coloured bar** - data for Electoral Division  
**Grey circle** - average for all Leicestershire Electoral Divisions

	2001	2011	Change	% Change
All usual residents	10,810	11,979	1,169	11
White: English/Welsh/Scottish/Northern Irish/British	10,454	11,264	810	8
White: Irish	97	83	-14	-14
White: Other White	120	316	196	163
Asian/Asian British: Bangladeshi	0	5	5	
Asian/Asian British: Chinese	23	38	15	65
Asian/Asian British: Indian	36	41	5	14
Asian/Asian British: Other Asian	9	82	73	811
Asian/Asian British: Pakistani	3	4	1	33
Black/African/Caribbean/Black British: African	3	4	1	33
Black/African/Caribbean/Black British: Caribbean	3	14	11	367
Black/African/Caribbean/Black British: Other Black	0	8	8	
Mixed/multiple ethnic group: Other Mixed	14	20	6	43
Mixed/multiple ethnic group: White and Asian	14	36	22	157
Mixed/multiple ethnic group: White and Black African	8	4	-4	-50
Mixed/multiple ethnic group: White and Black Caribbean	14	41	27	193
Other ethnic group: Any other ethnic group	12	19	7	58

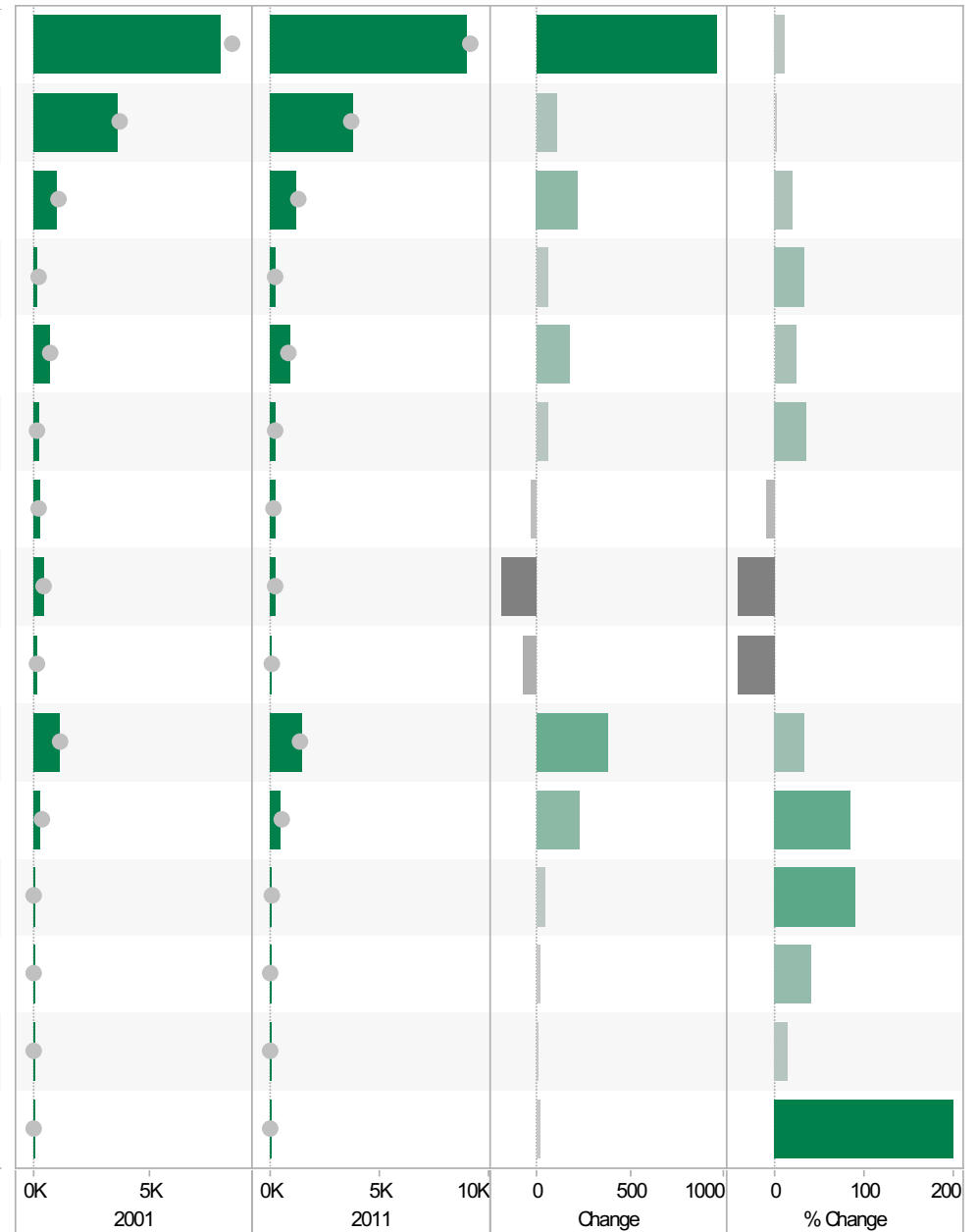


Source: Office for National Statistics (ONS), 2013.  
 Produced by the Research and Insight Team, Leicestershire County Council.

**Castle Donington ED**  
**KS601EW : Economic Activity, 2001-11**

**Coloured bar** - data for Electoral Division  
**Grey circle** - average for all Leicestershire Electoral Divisions

	2001	2011	Change	% Change
All usual residents aged 16 and over	8,048	9,006	958	12
Economically active: Employee: Full-time	3,657	3,762	105	3
Economically active: Employee: Part-time	1,017	1,236	219	22
Economically active: Full-time student	177	238	61	34
Economically active: Self-employed	720	898	178	25
Economically active: Unemployed	189	255	66	35
Economically inactive: Long-term sick or disabled	293	265	-28	-10
Economically inactive: Looking after home or family	453	266	-187	-41
Economically inactive: Other	166	100	-66	-40
Economically inactive: Retired	1,108	1,486	378	34
Economically inactive: Student (including full-time students)	268	500	232	87
Long-term unemployed	52	100	48	92
Unemployed: Age 16 to 24	44	62	18	41
Unemployed: Age 50 and over	52	60	8	15
Unemployed: Never worked	9	27	18	200

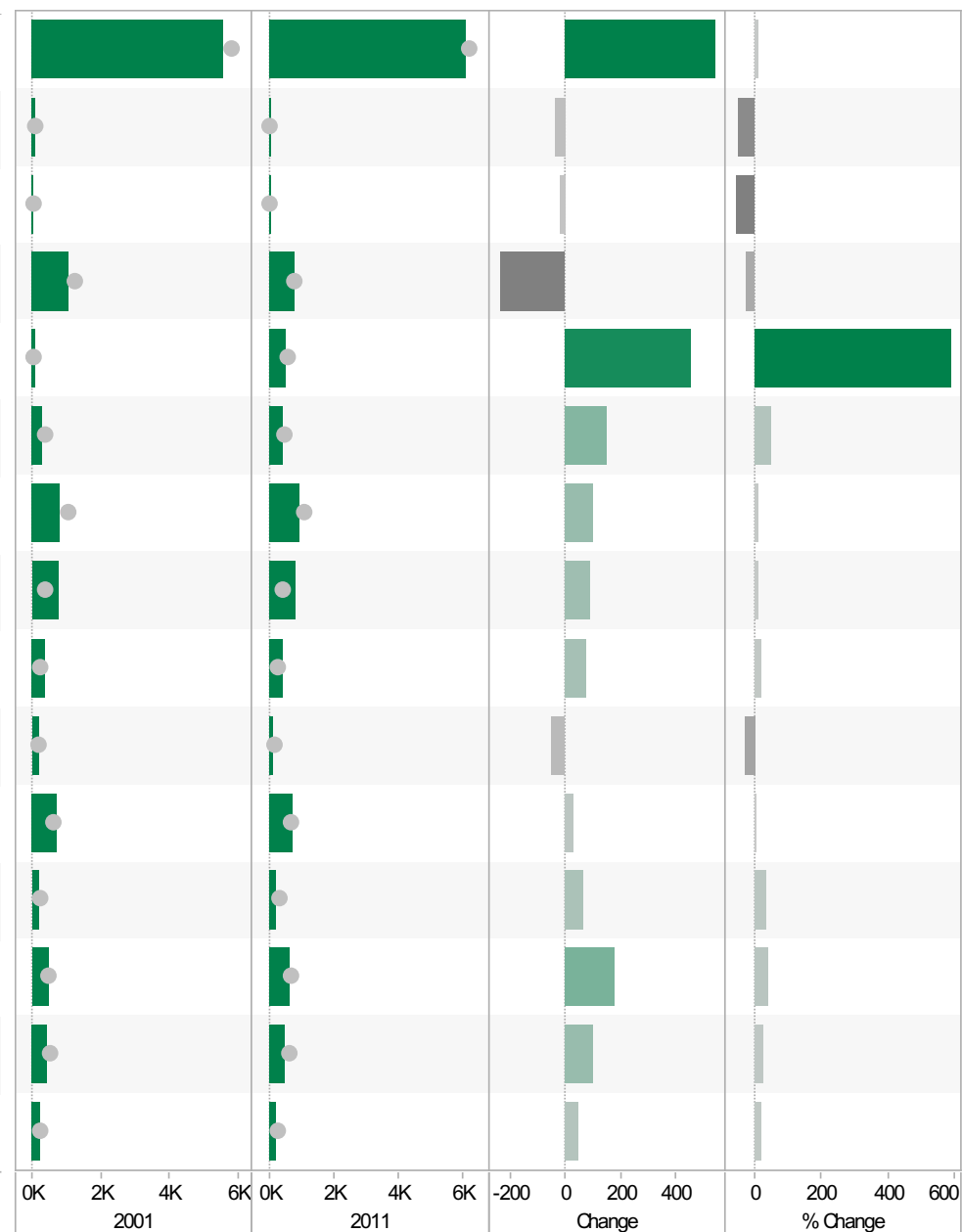


Source: Office for National Statistics (ONS), 2013.  
 Produced by the Research and Insight Team, Leicestershire County Council.

**Castle Donington ED**  
**KS605EW : Industry, 2001-11**

**Coloured bar** - data for Electoral Division  
**Grey circle** - average for all Leicestershire Electoral Divisions

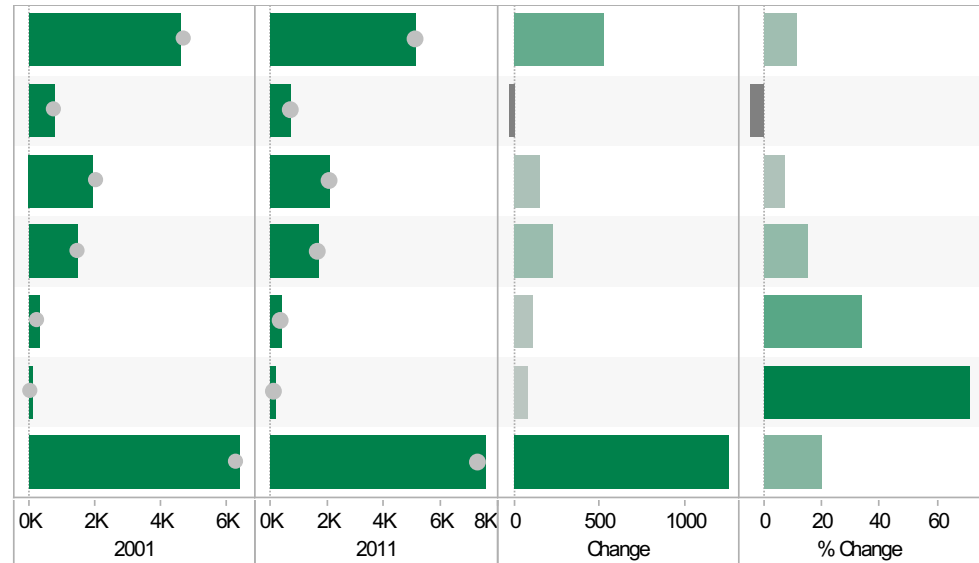
	2001	2011	Change	% Change
All usual residents aged 16 and over in employment	5,557	6,099	542	10
A Agriculture, forestry and fishing	81	44	-37	-46
B Mining and quarrying	33	15	-18	-55
C Manufacturing	1,037	799	-238	-23
D, F Electricity, gas, steam, air conditioning supply, water and sewerage	78	535	457	586
F Construction	289	439	150	52
G Wholesale and retail trade; repair of motor vehicles and motor cycles	819	922	103	13
H, J Transport, storage, information and communication	762	850	88	12
I Accommodation and food service activities	374	448	74	20
K Financial and insurance activities	175	127	-48	-27
L, M, N Real estate activities Professional, scientific and technical activities Administrative and support service activities	689	718	29	4
O Public administration and defence; compulsory social security	177	242	65	37
P Education	449	625	176	39
Q Human health and social work activities	397	500	103	26
R, S, T, U Other	197	243	46	23



Source: Office for National Statistics (ONS), 2013.  
Produced by the Research and Insight Team, Leicestershire County Council.

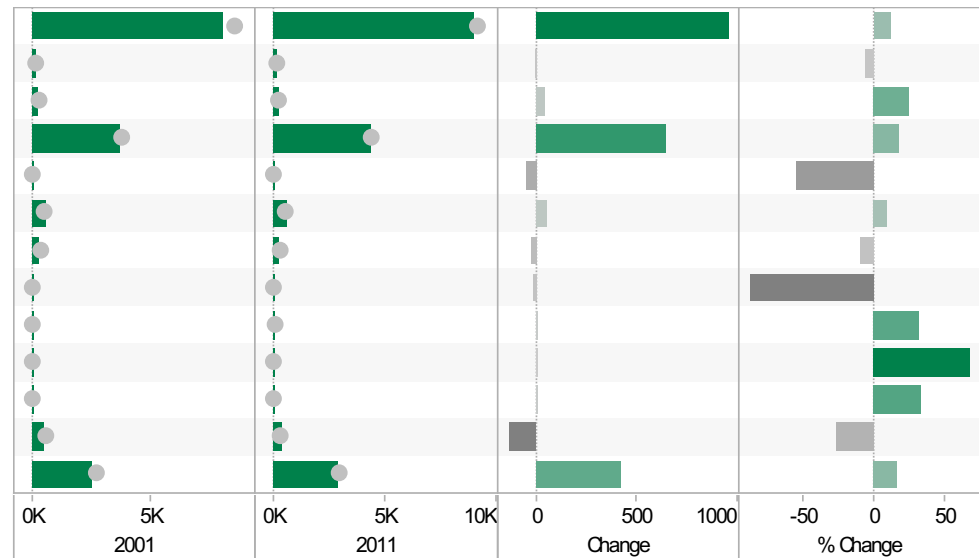
**Castle Donington ED**  
**KS404EW : Car and Van Availability, 2001-11**

	2001	2011	Change	% Change
All Households	4,608	5,134	526	11
No Cars or Vans in Household	736	701	-35	-5
1 Car or Van in Household	1,953	2,099	146	7
2 Cars or Vans in Household	1,498	1,731	233	16
3 Cars or Vans in Household	314	420	106	34
4 or More Cars or Vans in Household	107	183	76	71
All Cars or Vans in the Area	6,368	7,626	1,258	20



**Castle Donington ED**  
**QS701EW : Method of Travel to Work, 2001-11**

	2001	2011	Change	% Change
All Usual Residents Aged 16 to 74	8,052	9,006	954	12
Bicycle	144	136	-8	-6
Bus, Minibus or Coach	181	226	45	25
Driving a Car or Van	3,707	4,357	650	18
Motorcycle, Scooter or Moped	96	44	-52	-54
On Foot	542	592	50	9
Passenger in a Car or Van	281	256	-25	-9
Taxi	15	2	-13	-87
Train	35	46	11	31
Underground, Metro, Light Rail, Tram	3	5	2	67
Other Method of Travel to Work	33	44	11	33
Work Mainly at or From Home	527	391	-136	-26
Not in Employment	2,488	2,907	419	17



Source: Office for National Statistics (ONS), 2013.  
 Produced by the Research and Insight Team, Leicestershire County Council.

If you require information contained in this leaflet in another version e.g. large print, Braille, tape or alternative language please telephone: 0116 305 6803, Fax: 0116 305 7271 or Minicom: 0116 305 6160.

ਜੇ ਆਪ ਆ ਮਾਭਿਨੀ ਆਪਨੀ ਆਧਾਮਾਂ ਸਮਝਵਾਮਾਂ ਥੋੜੀ ਮਦਦ ਈਝਤਾਂ ਡੋ ਤੋ 0116 305 6803 ਨੰਬਰ ਪਰ ਝੋਨ ਕਰਥੋ ਅਨੇ ਅਮੇ ਆਪਨੇ ਮਦਦ ਕਰਵਾ ਅਵਥਾ ਕਰੀਥੁੰ.

ਜੇਕਰ ਤੁਹਾਨੂੰ ਇਸ ਜਾਣਕਾਰੀ ਨੂੰ ਸਮਝਣ ਵਿਚ ਕੁਝ ਮਦਦ ਚਾਹੀਦੀ ਹੈ ਤਾਂ ਕਿਰਪਾ ਕਰਕੇ 0116 305 6803 ਨੰਬਰ ਤੇ ਫੋਨ ਕਰੋ ਅਤੇ ਅਸੀਂ ਤੁਹਾਡੀ ਮਦਦ ਲਈ ਕਿਸੇ ਦਾ ਪ੍ਰਬੰਧ ਕਰ ਦਵਾਂਗੇ।

এই তথ্য নিজের ভাষায় বুঝার জন্য আপনার যদি কোন সাহায্যের প্রয়োজন হয়, তবে 0116 305 6803 এই নম্বরে ফোন করলে আমরা উপযুক্ত ব্যক্তির ব্যবস্থা করবো।

اگر آپ کو یہ معلومات سمجھنے میں کچھ مدد درکار ہے تو براہ مہربانی اس نمبر پر کال کریں اور ہم آپ کی مدد کے لئے کسی کا انتظام کر دیں گے۔ 0116 305 6803

假如閣下需要幫助，用你的語言去明白這些資訊，請致電 0116 305 6803，我們會安排有關人員為你提供幫助。

Jeżeli potrzebujesz pomocy w zrozumieniu tej informacji w Twoim języku, zadzwoń pod numer 0116 305 6803, a my Ci dopomożemy.

Research & Insight Team  
Strategy, Partnerships & Communities  
Chief Executive's Department  
Leicestershire County Council  
County Hall  
Glenfield  
Leicester  
LE3 8RA

[ri@leics.gov.uk](mailto:ri@leics.gov.uk)  
[www.lsr-online.org](http://www.lsr-online.org)