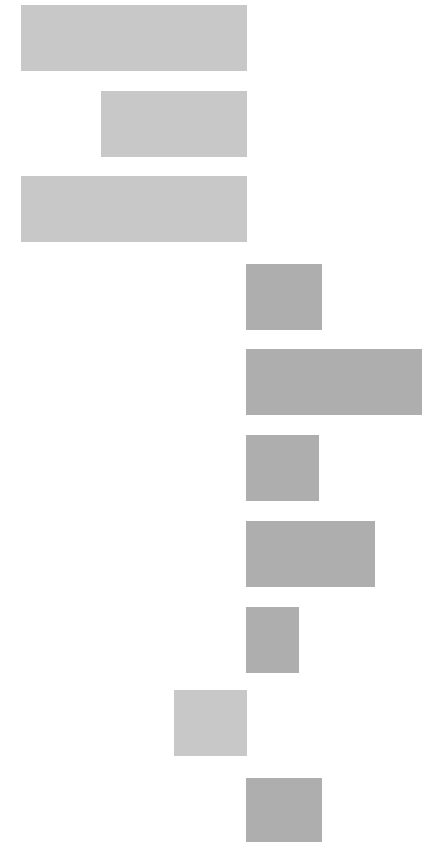


Valley Electoral Division

2011 Census Key Statistics

Alex Lea
May 2013

Research and Insight Team
Leicestershire County Council



Alex Lea

Research & Insight Manager

Research & Insight Team
Strategy, Partnerships & Communities
Leicestershire County Council
County Hall
Glenfield
Leicester LE3 8RB

Tel 0116 305 6803

Email alex.lea@leics.gov.uk

Produced by the Research and Insight Team at Leicestershire County Council.

Whilst every effort has been made to ensure the accuracy of the information contained within this report, Leicestershire County Council cannot be held responsible for any errors or omission relating to the data contained within the report.

CONTENTS

Introduction

About this Report	4
2011 Census	4
Data	5
Census Geography	5
Indicator Changes 2001-11	6

Population

KS101EW - Usual Resident Population	7
KS102EW - Age Structure	7

Households

KS105EW - Household Composition	8
KS402EW - Tenure	9

Health and Caring

KS301EW - Health and Provision of Unpaid Care	9
---	---

Ethnicity

KS201EW - Ethnic Group	10
------------------------	----

Economy

KS601EW - Economic Activity	11
KS605EW - Industry	12

Transport

KS404EW - Car and Van Availability	13
QS701EW- Method of Travel to Work	13

INTRODUCTION

ABOUT THIS REPORT

This report provides a broad overview of the 2011 Census Key Statistics data, released by the Office for National Statistics on 30th January 2013, as part of the Second Release. This report summarises a selection of key headline datasets of this release for Leicestershire Electoral Divisions (EDs).

The Research and Insight Team at Leicestershire County Council has used data from the Second release to create an interactive Tableau dashboard containing 32 datasets covering the following geographies:

- England
- East Midlands
- East Midlands counties . Including Leicestershire
- Leicester City and Rutland Unitary Authorities
- Leicestershire districts

In addition, a headline report covers the results for Leicestershire and the seven districts that make up the county. The dashboard and report are available at the following links:

Census 2011 Key Statistics Dashboard

<http://public.tableausoftware.com/views/LAKeyStatsDashboard/Dashboard>

May 2013

Census 2011 Key Statistics Headline Report

http://www.lsr-online.org/reports/census_2011_key_statistics_headline_report/download/1/Census%202011%20Second%20Release%20FINAL.pdf

2011 CENSUS

Census statistics help paint a picture of the nation and how we live. They provide a detailed snapshot of the population and its characteristics, and underpin funding allocation to provide public services.¹ Data from the 2011 Census is made available at a variety of different levels of geography and in various releases.

The Key Statistics data covers a broad range of socio-economic topics, including data on ethnicity, health and employment. Each Key Statistic dataset is referred to by its unique three-digit code with the 'KS' prefix to denote a Key statistic (e.g. KS101). These are used throughout the report.

A full list of the 35 Key Statistics data tables are available here:

<http://www.ons.gov.uk/ons/publications/re-reference-tables.html?edition=tcm%3A77-286262>

¹ Office for National Statistics (ONS), 2013.

Further results from the census will be released throughout 2013, for more information, please visit:

<http://www.lsr-online.org/census-2011.html>

More information on the 2011 Census can be found here:

<http://www.ons.gov.uk/ons/guide-method/census/2011/index.html>

DATA

Data has been compiled for Leicestershire Electoral Divisions, covering the key datasets from the 2011 Census Key statistics.

Figures for 2011 and 2001 are included, along with the overall and percentage change between the two censuses. Data for each indicator is presented in a table and chart.

Population data is displayed in a table, a population pyramid and a chart showing percentage change between 2001 and 2011. All other data is displayed in tables, and charts. Charts for change between 2001 and 2011 are coloured according to the degree of change between the two censuses; grey corresponds to smallest change and green the largest change. A marker indicates the average figure for all Leicestershire Electoral Divisions.

GEOGRAPHY

Maps for all County Council Electoral Divisions can be found here:

http://www.leics.gov.uk/index/your_council/local_democracy/conductofcouncillorsandemployees/electoraldivisionmapsindex/electoraldivisionmaps.htm

As Census data is not made available for Electoral Divisions, smaller areas, called Lower Super Output Areas (LSOAs) have been used as building blocks for the figures included in this report. LSOAs are small parcels of geography, containing a minimum of 1,000 people, a maximum of 3,000 and an average of 1,500. LSOAs were initially developed for the 2001 Census and are used to release a range of neighbourhood-level datasets from various sources. There are 396 LSOAs in Leicestershire.

In some instances, LSOAs do not fit neatly within Electoral Divisions and in these cases, population weighted centroids - representing the 'centre of gravity' for population within an area - have been used in order to assign each LSOA to an Electoral Division. Electoral Divisions that fall within this category are indicated with a (*).

More information on Lower Super Output Areas can be found here:

<http://www.ons.gov.uk/ons/guide-method/geography/beginner-s-guide/census/super-output-areas--soas-/index.html>

INDICATOR CHANGES 2001-11

The following questions were asked in slightly different ways in 2011 compared to 2001. As such, care should be taken when making comparison between years.

KS201EW : Ethnic Group

Asian/Asian British: Chinese
Mixed/multiple ethnic group: Other Mixed
Mixed/multiple ethnic group: White and Asian
Mixed/multiple ethnic group: White and Black African
Mixed/multiple ethnic group: White and Black Caribbean
Other ethnic group: Any other ethnic group
White: English/Welsh/Scottish/Northern Irish/British
White: Other White

KS301EW : Health and Provision of Unpaid Care

Day-to-day activities limited
Day-to-day activities limited: Age 16 to 64
Day-to-day activities not limited
Fair health
Very/ bad Health
Very/ good Health

KS601EW : Economic Activity

All usual residents aged 16 and over
Economically active: Employee: Full-time
Economically active: Employee: Part-time
Economically active: Full-time student

Economically active: Self-employed
Economically active: Unemployed
Economically inactive: Long-term sick or disabled
Economically inactive: Looking after home or family
Economically inactive: Other
Economically inactive: Retired
Economically inactive: Student (including full-time)
Long-term unemployed
Unemployed: Age 50 and over
Unemployed: Never worked

KS605EW : Industry

All usual residents aged 16 and over in employment
A Agriculture, forestry and fishing
B Mining and quarrying
C Manufacturing
D, F Electricity, gas, steam, air conditioning supply etc
F Construction
G Wholesale and retail trade; repair of motor vehicles etc
H, J Transport, storage, information and communication
I Accommodation and food service activities
K Financial and insurance activities
L,M,N Real estate activities Professional, scientific etc
O Public administration and defence etc
P Education
Q Human health and social work activities
R, S, T, U Other

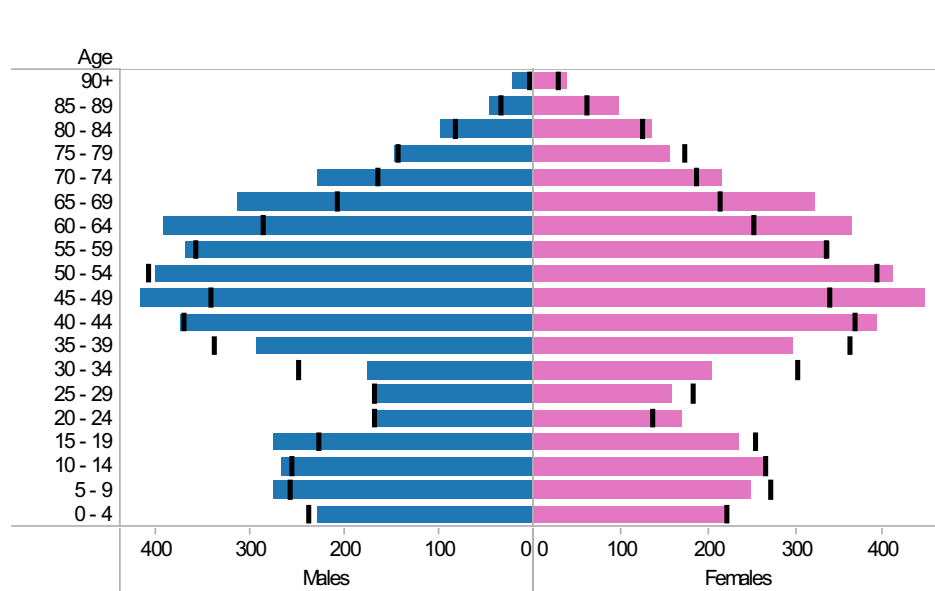
Valley ED: KS101EW : Usual Resident Population, KS102EW : Age Structure

■ Males ■ Females ■ Persons

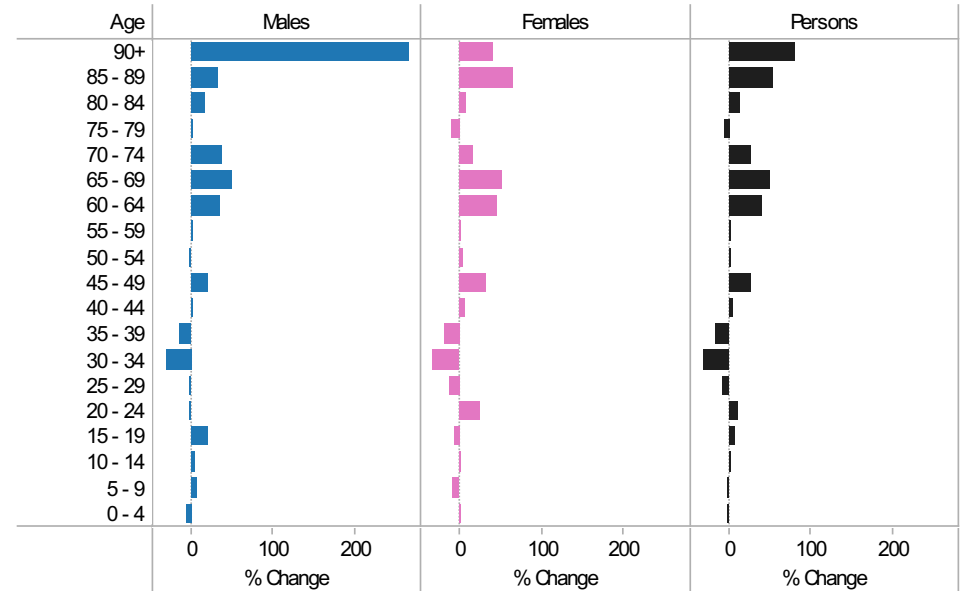
2001-11 Population by sex and quinary age band

Age	Males			Females			Persons		
	2001	2011	Change 2001-11	2001	2011	Change 2001-11	2001	2011	Change 2001-11
90+	6	22	16	27	38	11	33	60	27
85 - 89	35	47	12	59	98	39	94	145	51
80 - 84	84	98	14	124	135	11	208	233	25
75 - 79	145	146	1	172	156	-16	317	302	-15
70 - 74	167	229	62	185	216	31	352	445	93
65 - 69	209	313	104	212	322	110	421	635	214
60 - 64	287	392	105	251	365	114	538	757	219
55 - 59	359	368	9	334	340	6	693	708	15
50 - 54	410	400	-10	392	411	19	802	811	9
45 - 49	344	417	73	337	448	111	681	865	184
40 - 44	371	374	3	366	393	27	737	767	30
35 - 39	340	293	-47	361	296	-65	701	589	-112
30 - 34	250	176	-74	300	204	-96	550	380	-170
25 - 29	169	166	-3	181	159	-22	350	325	-25
20 - 24	169	166	-3	135	170	35	304	336	32
15 - 19	229	276	47	253	236	-17	482	512	30
10 - 14	257	267	10	264	268	4	521	535	14
5 - 9	259	276	17	269	249	-20	528	525	-3
0 - 4	240	228	-12	220	223	3	460	451	-9
All Ages	4,330	4,654	324	4,442	4,727	285	8,772	9,381	609

2011 (coloured bars) and 2001 (black marks) population by sex and quinary age



2001-11 Percentage change by sex and quinary age band



Valley ED
KS105EW : Household Composition, 2001-11

Coloured bar - data for Electoral Division
Grey circle - average for all Leicestershire Electoral Divisions

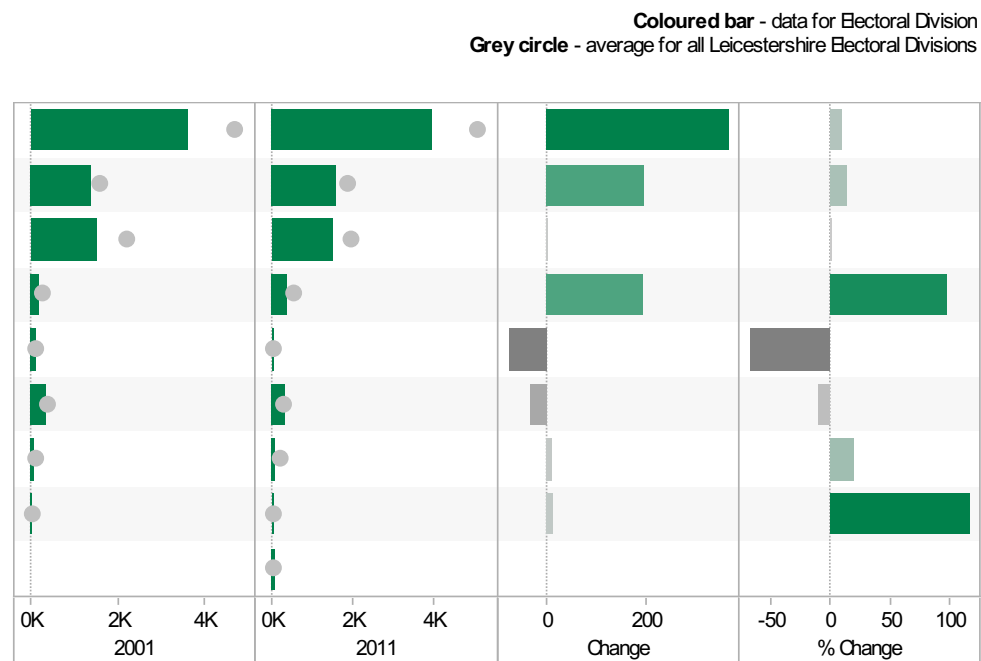
	2001	2011	Change	% Change
All Households	3,611	3,968	357	10
One Family Only; All Aged 65 and Over	386	431	45	12
One Family Only; Cohabiting Couple; All Children Non-Dependent	21	17	-4	-19
One Family Only; Cohabiting Couple; Dependent Children	104	134	30	29
One Family Only; Cohabiting Couple; No Children	163	216	53	33
One Family Only; Lone Parent; All Children Non-Dependent	99	90	-9	-9
One Family Only; Lone Parent; Dependent Children	112	150	38	34
One Family Only; Married or Same-Sex Civil Partnership Couple; All Children Non-Dependent	310	293	-17	-5
One Family Only; Married or Same-Sex Civil Partnership Couple; Dependent Children	760	718	-42	-6
One Family Only; Married or Same-Sex Civil Partnership Couple; No Children	685	734	49	7
One Person Household; Aged 65 and Over	450	447	-3	-1
One Person Household; Other	380	569	189	50
Other Household Types; All Aged 65 and Over	26	15	-11	-42
Other Household Types; All Full-Time Students	0	2	2	
Other Household Types; Other	70	80	10	14
Other Household Types; With Dependent Children	45	72	27	60



Source: Office for National Statistics (ONS), 2013.
Produced by the Research and Insight Team, Leicestershire County Council.

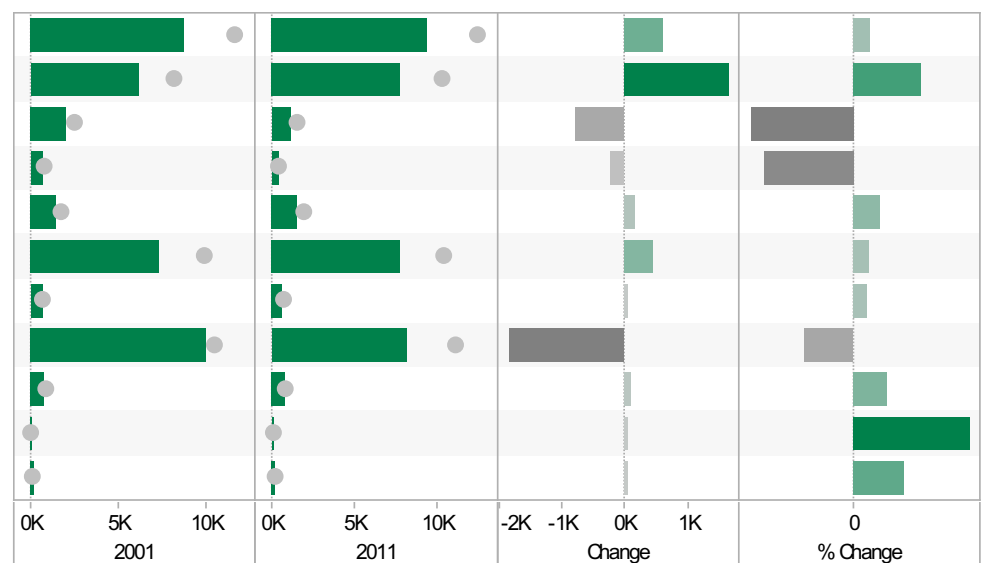
Valley ED KS402EW: Tenure, 2001-11

	2001	2011	Change	% Change
All Households	3,601	3,968	367	10
Owned; Owned Outright	1,380	1,579	199	14
Owned; Owned with a Mortgage or Loan	1,498	1,502	4	0
Private Rented; Private Landlord or Letting Agency	197	390	193	98
Private Rented; Other	115	37	-78	-68
Social Rented; Rented from Council (Local Authority)	346	311	-35	-10
Social Rented; Other	53	63	10	19
Shared Ownership (Part Owned and Part Rented)	12	26	14	117
Living Rent Free		60		



Valley ED KS301EW: Health and Provision of Unpaid Care, 2001-11

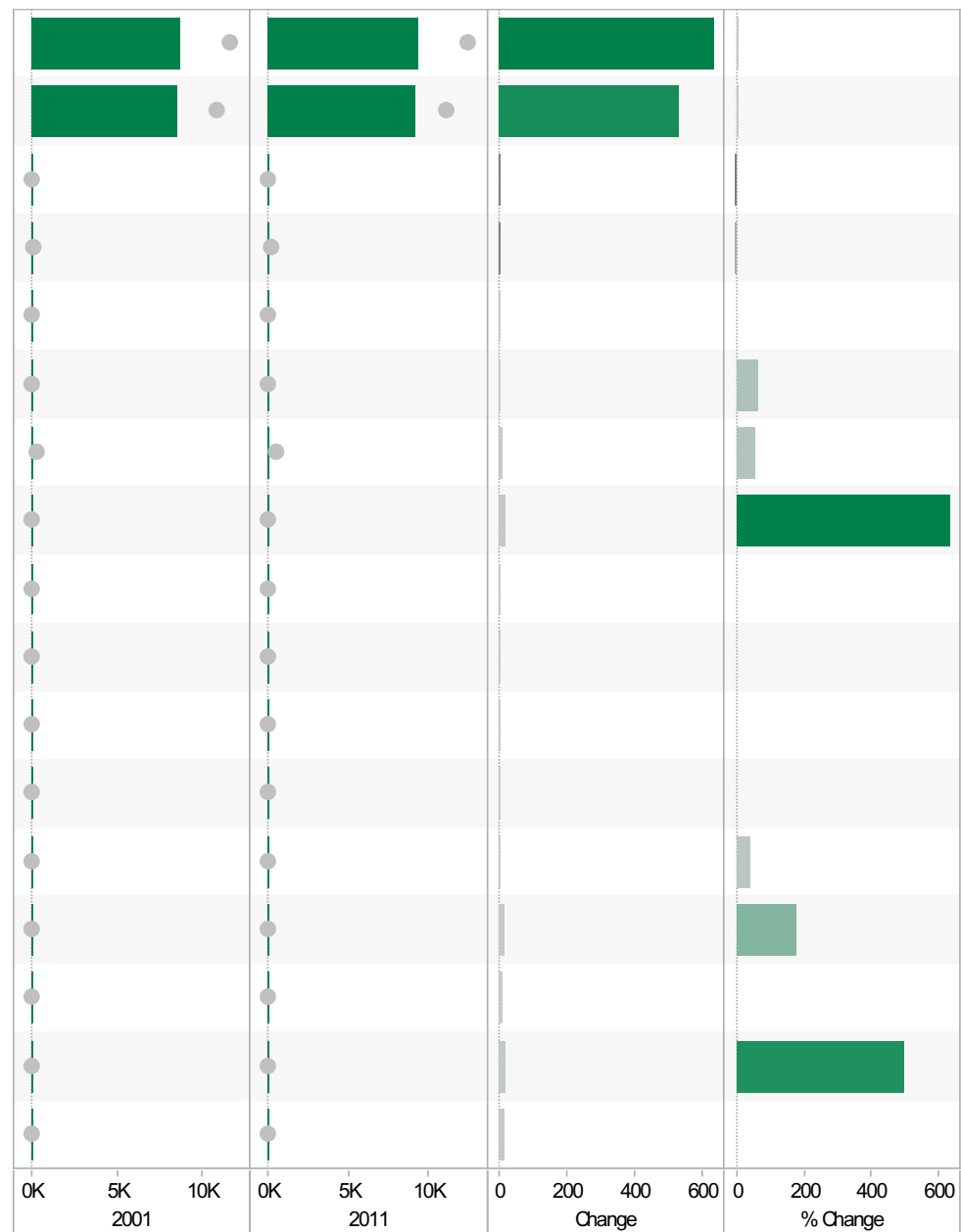
	2001	2011	Change	% Change
All usual residents	8,770	9,381	611	7
Very/ good Health	6,114	7,758	1,644	27
Fair health	1,993	1,189	-804	-40
Very/ bad Health	663	434	-229	-35
Day-to-day activities limited	1,453	1,608	155	11
Day-to-day activities not limited	7,317	7,773	456	6
Day-to-day activities limited a lot: Age 16 to 64	648	686	38	6
Provides no unpaid care	10,026	8,169	-1,857	-19
Provides 1 to 19 hours unpaid care a week	745	848	103	14
Provides 20 to 49 hours unpaid care a week	103	150	47	46
Provides 50 or more hours unpaid care a week	178	214	36	20



Valley ED
KS201EW : Ethnic Group, 2001-11

Coloured bar - data for Electoral Division
Grey circle - average for all Leicestershire Electoral Divisions

	2001	2011	Change	% Change
All usual residents	8,748	9,381	633	7
White: English/Welsh/Scottish/Northern Irish/British	8,556	9,090	534	6
White: Irish	44	41	-3	-7
White: Other White	103	100	-3	-3
Asian/Asian British: Bangladeshi	0	0	0	
Asian/Asian British: Chinese	3	5	2	67
Asian/Asian British: Indian	18	28	10	56
Asian/Asian British: Other Asian	3	22	19	633
Asian/Asian British: Pakistani	0	0	0	
Black/African/Caribbean/Black British: African	0	6	6	
Black/African/Caribbean/Black British: Caribbean	0	4	4	
Black/African/Caribbean/Black British: Other Black	0	3	3	
Mixed/multiple ethnic group: Other Mixed	8	11	3	38
Mixed/multiple ethnic group: White and Asian	9	25	16	178
Mixed/multiple ethnic group: White and Black African	0	7	7	
Mixed/multiple ethnic group: White and Black Caribbean	4	24	20	500
Other ethnic group: Any other ethnic group	0	15	15	

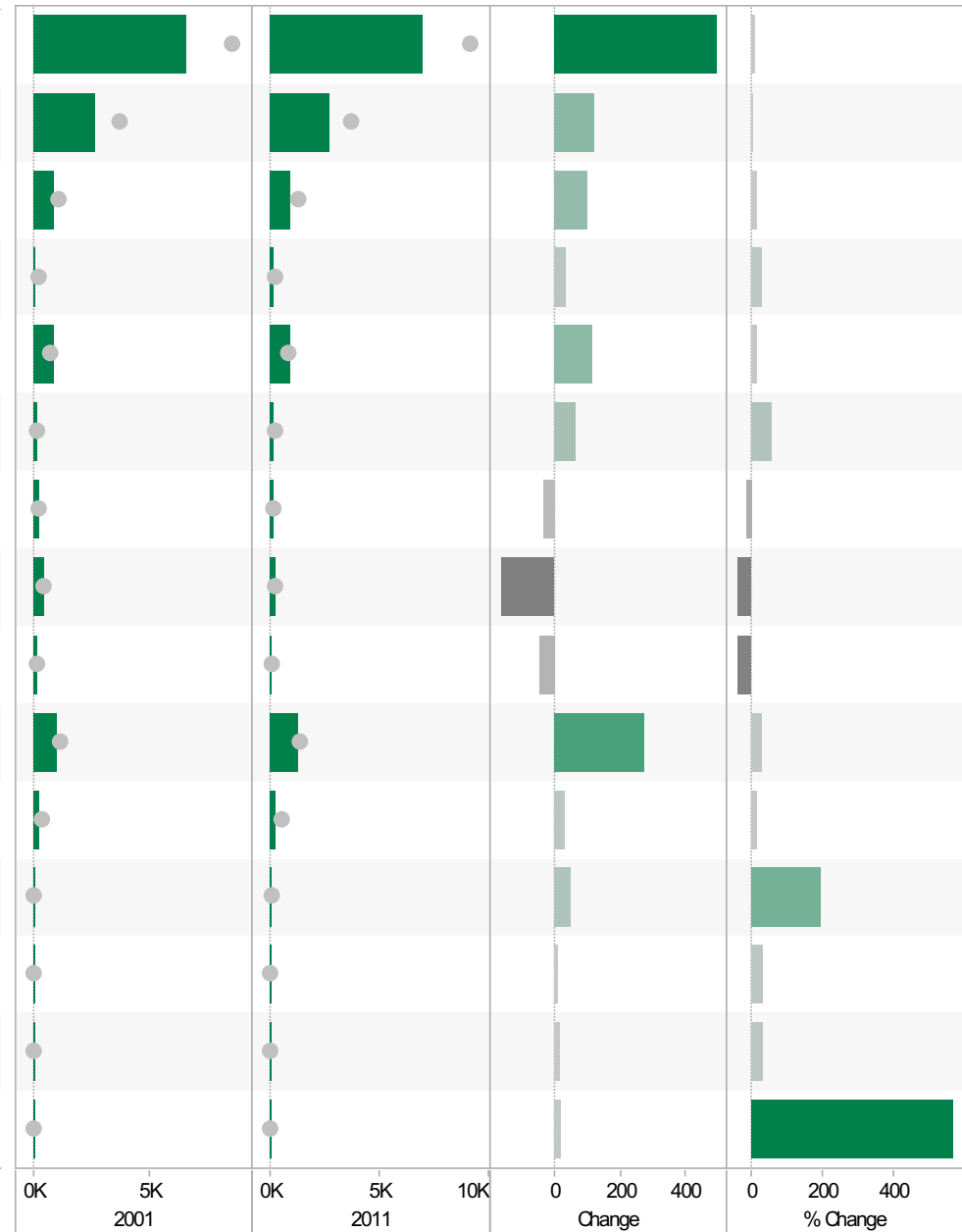


Source: Office for National Statistics (ONS), 2013.
Produced by the Research and Insight Team, Leicestershire County Council.

Valley ED
KS601EW : Economic Activity, 2001-11

Coloured bar - data for Electoral Division
Grey circle - average for all Leicestershire Electoral Divisions

	2001	2011	Change	% Change
All usual residents aged 16 and over	6,506	6,999	493	8
Economically active: Employee: Full-time	2,615	2,737	122	5
Economically active: Employee: Part-time	830	931	101	12
Economically active: Full-time student	114	146	32	28
Economically active: Self-employed	845	961	116	14
Economically active: Unemployed	123	190	67	54
Economically inactive: Long-term sick or disabled	234	199	-35	-15
Economically inactive: Looking after home or family	420	254	-166	-40
Economically inactive: Other	126	78	-48	-38
Economically inactive: Retired	1,009	1,284	275	27
Economically inactive: Student (including full-time students)	190	219	29	15
Long-term unemployed	25	74	49	196
Unemployed: Age 16 to 24	32	42	10	31
Unemployed: Age 50 and over	41	55	14	34
Unemployed: Never worked	3	20	17	567

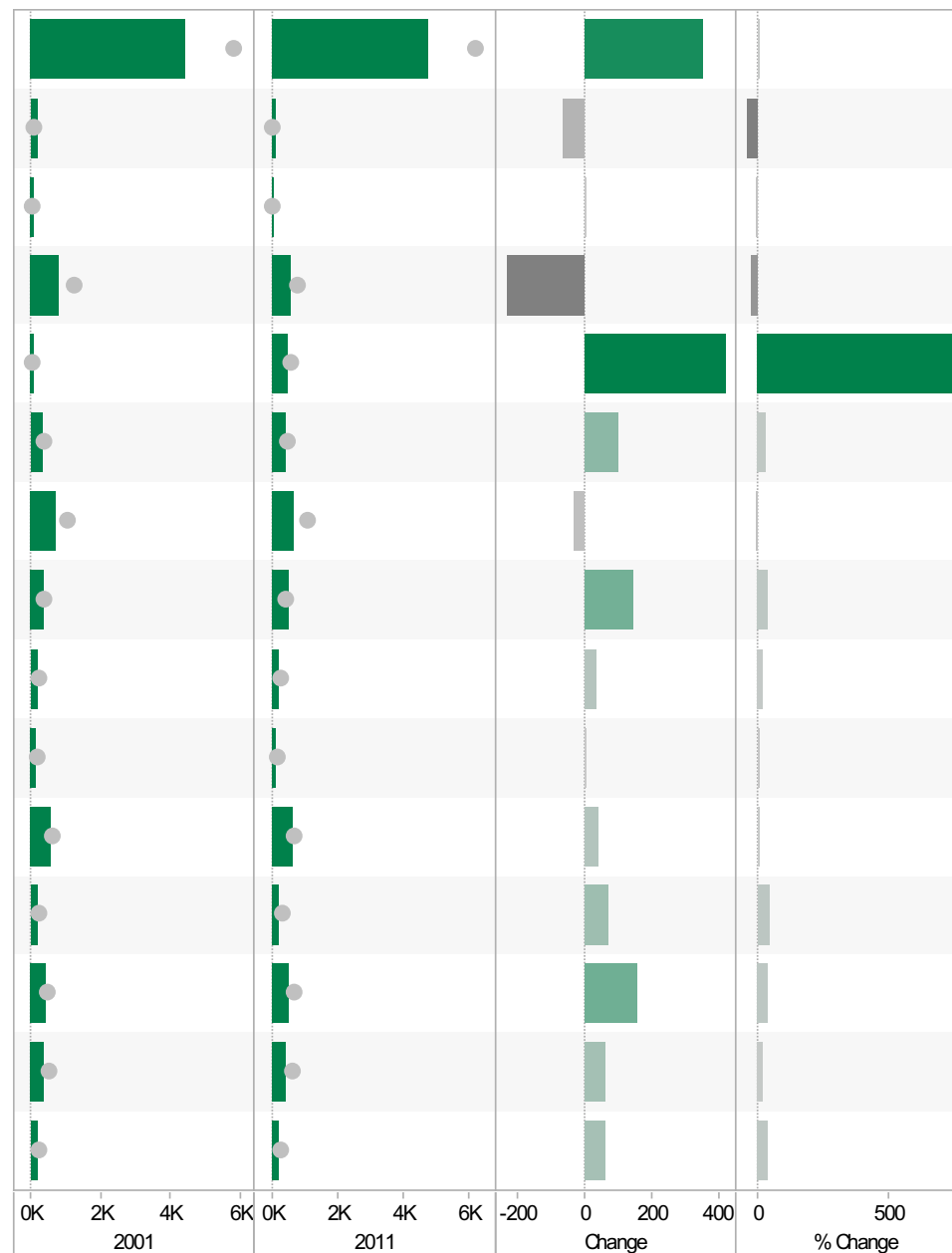


Source: Office for National Statistics (ONS), 2013.
Produced by the Research and Insight Team, Leicestershire County Council.

Valley ED
KS605EW : Industry, 2001-11

Coloured bar - data for Electoral Division
Grey circle - average for all Leicestershire Electoral Divisions

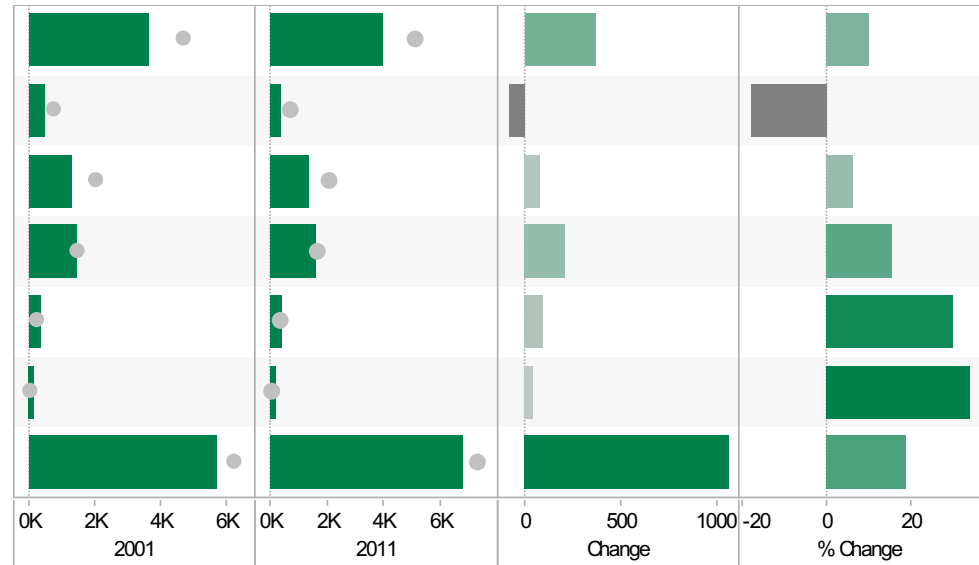
	2001	2011	Change	% Change
All usual residents aged 16 and over in employment	4,395	4,745	350	8
A Agriculture, forestry and fishing	164	96	-68	-41
B Mining and quarrying	56	54	-2	-4
C Manufacturing	821	586	-235	-29
D, F Electricity, gas, steam, air conditioning supply, water and sewerage	53	470	417	787
F Construction	322	423	101	31
G Wholesale and retail trade; repair of motor vehicles and motor cycles	693	660	-33	-5
H, J Transport, storage, information and communication	364	510	146	40
I Accommodation and food service activities	170	204	34	20
K Financial and insurance activities	111	109	-2	-2
L, M, N Real estate activities Professional, scientific and technical activities Administrative and support service activities	567	604	37	7
O Public administration and defence; compulsory social security	158	228	70	44
P Education	389	543	154	40
Q Human health and social work activities	369	429	60	16
R, S, T, U Other	158	216	58	37



Source: Office for National Statistics (ONS), 2013.
Produced by the Research and Insight Team, Leicestershire County Council.

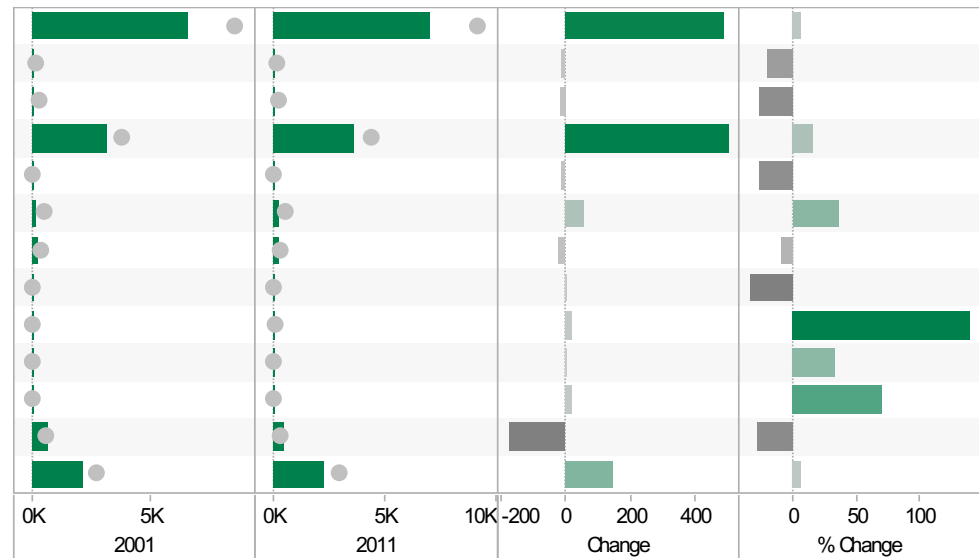
Valley ED
KS404EW : Car and Van Availability, 2001-11

	2001	2011	Change	% Change
All Households	3,603	3,968	365	10
No Cars or Vans in Household	449	368	-81	-18
1 Car or Van in Household	1,279	1,363	84	7
2 Cars or Vans in Household	1,402	1,618	216	15
3 Cars or Vans in Household	327	424	97	30
4 or More Cars or Vans in Household	146	195	49	34
All Cars or Vans in the Area	5,702	6,757	1,055	19



Valley ED
QS701EW : Method of Travel to Work, 2001-11

	2001	2011	Change	% Change
All Usual Residents Aged 16 to 74	6,511	6,999	488	7
Bicycle	70	56	-14	-20
Bus, Minibus or Coach	64	47	-17	-27
Driving a Car or Van	3,136	3,639	503	16
Motorcycle, Scooter or Moped	58	43	-15	-26
On Foot	155	210	55	35
Passenger in a Car or Van	225	204	-21	-9
Taxi	12	8	-4	-33
Train	13	31	18	138
Underground, Metro, Light Rail, Tram	3	4	1	33
Other Method of Travel to Work	24	41	17	71
Work Mainly at or From Home	640	462	-178	-28
Not in Employment	2,111	2,254	143	7



Source: Office for National Statistics (ONS), 2013.
Produced by the Research and Insight Team, Leicestershire County Council.

If you require information contained in this leaflet in another version e.g. large print, Braille, tape or alternative language please telephone: 0116 305 6803, Fax: 0116 305 7271 or Minicom: 0116 305 6160.

ਜੇ ਆਪ ਆ ਮਾਭਿਨੀ ਆਪਨੀ ਆਧਾਮਾਂ ਸਮਝਵਾਮਾਂ ਥੋੜੀ ਮਦਦ ਈਝਤਾਂ ਡੋ ਤੋ 0116 305 6803 ਨੰਬਰ ਪਰ ਝੋਨ ਕਰਥੋ ਅਨੇ ਅਮੇ ਆਪਨੇ ਮਦਦ ਕਰਵਾ ਅਵਥਾ ਕਰੀਥੁੰ.

ਜੇਕਰ ਤੁਹਾਨੂੰ ਇਸ ਜਾਣਕਾਰੀ ਨੂੰ ਸਮਝਣ ਵਿਚ ਕੁਝ ਮਦਦ ਚਾਹੀਦੀ ਹੈ ਤਾਂ ਕਿਰਪਾ ਕਰਕੇ 0116 305 6803 ਨੰਬਰ ਤੇ ਫੋਨ ਕਰੋ ਅਤੇ ਅਸੀਂ ਤੁਹਾਡੀ ਮਦਦ ਲਈ ਕਿਸੇ ਦਾ ਪ੍ਰਬੰਧ ਕਰ ਦਵਾਂਗੇ।

এই তথ্য নিজের ভাষায় বুঝার জন্য আপনার যদি কোন সাহায্যের প্রয়োজন হয়, তবে 0116 305 6803 এই নম্বরে ফোন করলে আমরা উপযুক্ত ব্যক্তির ব্যবস্থা করবো।

اگر آپ کو یہ معلومات سمجھنے میں کچھ مدد درکار ہے تو براہ مہربانی اس نمبر پر کال کریں اور ہم آپ کی مدد کے لئے کسی کا انتظام کر دیں گے۔ 0116 305 6803

假如閣下需要幫助，用你的語言去明白這些資訊，請致電 0116 305 6803，我們會安排有關人員為你提供幫助。

Jeżeli potrzebujesz pomocy w zrozumieniu tej informacji w Twoim języku, zadzwoń pod numer 0116 305 6803, a my Ci dopomożemy.

Research & Insight Team
Strategy, Partnerships & Communities
Chief Executive's Department
Leicestershire County Council
County Hall
Glenfield
Leicester
LE3 8RA

ri@leics.gov.uk
www.lsr-online.org