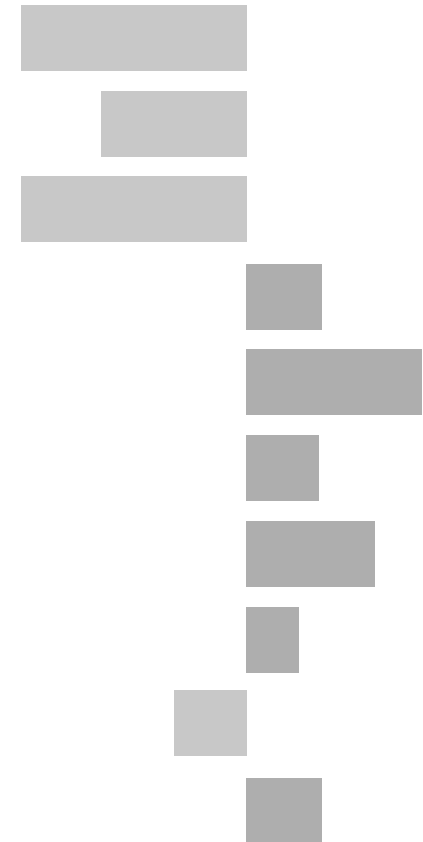


Warren Hills Electoral Division

2011 Census Key Statistics

Alex Lea
May 2013

Research and Insight Team
Leicestershire County Council



Alex Lea

Research & Insight Manager

Research & Insight Team
Strategy, Partnerships & Communities
Leicestershire County Council
County Hall
Glenfield
Leicester LE3 8RB

Tel 0116 305 6803

Email alex.lea@leics.gov.uk

Produced by the Research and Insight Team at Leicestershire County Council.

Whilst every effort has been made to ensure the accuracy of the information contained within this report, Leicestershire County Council cannot be held responsible for any errors or omission relating to the data contained within the report.

CONTENTS

Introduction

About this Report	4
2011 Census	4
Data	5
Census Geography	5
Indicator Changes 2001-11	6

Population

KS101EW - Usual Resident Population	7
KS102EW - Age Structure	7

Households

KS105EW - Household Composition	8
KS402EW - Tenure	9

Health and Caring

KS301EW - Health and Provision of Unpaid Care	9
---	---

Ethnicity

KS201EW - Ethnic Group	10
------------------------	----

Economy

KS601EW - Economic Activity	11
KS605EW - Industry	12

Transport

KS404EW - Car and Van Availability	13
QS701EW - Method of Travel to Work	13

INTRODUCTION

ABOUT THIS REPORT

This report provides a broad overview of the 2011 Census Key Statistics data, released by the Office for National Statistics on 30th January 2013, as part of the Second Release. This report summarises a selection of key headline datasets of this release for Leicestershire Electoral Divisions (EDs).

The Research and Insight Team at Leicestershire County Council has used data from the Second release to create an interactive Tableau dashboard containing 32 datasets covering the following geographies:

- England
- East Midlands
- East Midlands counties . Including Leicestershire
- Leicester City and Rutland Unitary Authorities
- Leicestershire districts

In addition, a headline report covers the results for Leicestershire and the seven districts that make up the county. The dashboard and report are available at the following links:

Census 2011 Key Statistics Dashboard

<http://public.tableausoftware.com/views/LAKeyStatsDashboard/Dashboard>

May 2013

Census 2011 Key Statistics Headline Report

http://www.lsr-online.org/reports/census_2011_key_statistics_headline_report/download/1/Census%202011%20Second%20Release%20FINAL.pdf

2011 CENSUS

Census statistics help paint a picture of the nation and how we live. They provide a detailed snapshot of the population and its characteristics, and underpin funding allocation to provide public services.¹ Data from the 2011 Census is made available at a variety of different levels of geography and in various releases.

The Key Statistics data covers a broad range of socio-economic topics, including data on ethnicity, health and employment. Each Key Statistic dataset is referred to by its unique three-digit code with the 'KS' prefix to denote a Key statistic (e.g. KS101). These are used throughout the report.

A full list of the 35 Key Statistics data tables are available here:

<http://www.ons.gov.uk/ons/publications/re-reference-tables.html?edition=tcm%3A77-286262>

¹ Office for National Statistics (ONS), 2013.

Further results from the census will be released throughout 2013, for more information, please visit:

<http://www.lsr-online.org/census-2011.html>

More information on the 2011 Census can be found here:

<http://www.ons.gov.uk/ons/guide-method/census/2011/index.html>

DATA

Data has been compiled for Leicestershire Electoral Divisions, covering the key datasets from the 2011 Census Key statistics.

Figures for 2011 and 2001 are included, along with the overall and percentage change between the two censuses. Data for each indicator is presented in a table and chart.

Population data is displayed in a table, a population pyramid and a chart showing percentage change between 2001 and 2011. All other data is displayed in tables, and charts. Charts for change between 2001 and 2011 are coloured according to the degree of change between the two censuses; grey corresponds to smallest change and green the largest change. A marker indicates the average figure for all Leicestershire Electoral Divisions.

GEOGRAPHY

Maps for all County Council Electoral Divisions can be found here:

http://www.leics.gov.uk/index/your_council/local_democracy/conductofcouncillorsandemployees/electoraldivisionmapsindex/electoraldivisionmaps.htm

As Census data is not made available for Electoral Divisions, smaller areas, called Lower Super Output Areas (LSOAs) have been used as building blocks for the figures included in this report. LSOAs are small parcels of geography, containing a minimum of 1,000 people, a maximum of 3,000 and an average of 1,500. LSOAs were initially developed for the 2001 Census and are used to release a range of neighbourhood-level datasets from various sources. There are 396 LSOAs in Leicestershire.

In some instances, LSOAs do not fit neatly within Electoral Divisions and in these cases, population weighted centroids - representing the 'centre of gravity' for population within an area - have been used in order to assign each LSOA to an Electoral Division. Electoral Divisions that fall within this category are indicated with a (*).

More information on Lower Super Output Areas can be found here:

<http://www.ons.gov.uk/ons/guide-method/geography/beginner-s-guide/census/super-output-areas--soas-/index.html>

INDICATOR CHANGES 2001-11

The following questions were asked in slightly different ways in 2011 compared to 2001. As such, care should be taken when making comparison between years.

KS201EW : Ethnic Group

Asian/Asian British: Chinese
Mixed/multiple ethnic group: Other Mixed
Mixed/multiple ethnic group: White and Asian
Mixed/multiple ethnic group: White and Black African
Mixed/multiple ethnic group: White and Black Caribbean
Other ethnic group: Any other ethnic group
White: English/Welsh/Scottish/Northern Irish/British
White: Other White

KS301EW : Health and Provision of Unpaid Care

Day-to-day activities limited
Day-to-day activities limited: Age 16 to 64
Day-to-day activities not limited
Fair health
Very/ bad Health
Very/ good Health

KS601EW : Economic Activity

All usual residents aged 16 and over
Economically active: Employee: Full-time
Economically active: Employee: Part-time
Economically active: Full-time student

Economically active: Self-employed
Economically active: Unemployed
Economically inactive: Long-term sick or disabled
Economically inactive: Looking after home or family
Economically inactive: Other
Economically inactive: Retired
Economically inactive: Student (including full-time)
Long-term unemployed
Unemployed: Age 50 and over
Unemployed: Never worked

KS605EW : Industry

All usual residents aged 16 and over in employment
A Agriculture, forestry and fishing
B Mining and quarrying
C Manufacturing
D, F Electricity, gas, steam, air conditioning supply etc
F Construction
G Wholesale and retail trade; repair of motor vehicles etc
H, J Transport, storage, information and communication
I Accommodation and food service activities
K Financial and insurance activities
L,M,N Real estate activities Professional, scientific etc
O Public administration and defence etc
P Education
Q Human health and social work activities
R, S, T, U Other

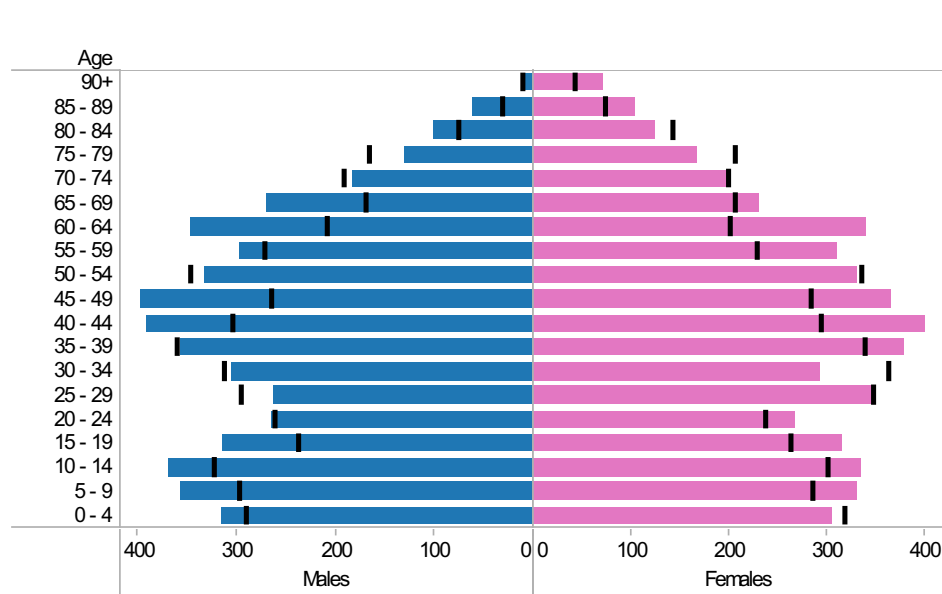
Warren Hills ED: KS101EW : Usual Resident Population, KS102EW : Age Structure

■ Males
 ■ Females
 ■ Persons

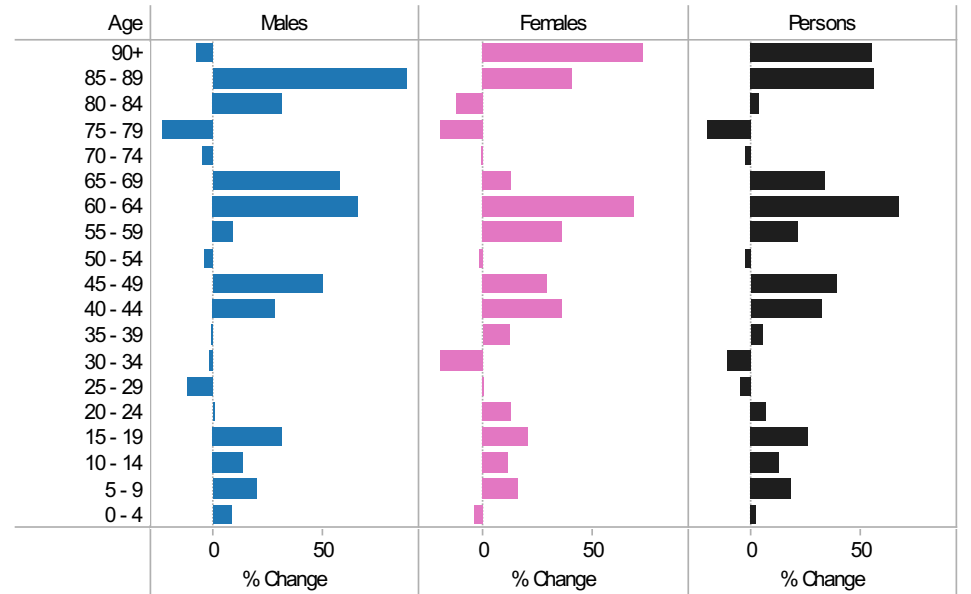
2001-11 Population by sex and quinary age band

Age	Males			Females			Persons		
	2001	2011	Change 2001-11	2001	2011	Change 2001-11	2001	2011	Change 2001-11
90+	12	11	-1	41	71	30	53	82	29
85 - 89	33	62	29	73	103	30	106	165	59
80 - 84	77	101	24	142	125	-17	219	226	7
75 - 79	168	129	-39	205	167	-38	373	296	-77
70 - 74	192	182	-10	199	198	-1	391	380	-11
65 - 69	171	269	98	205	232	27	376	501	125
60 - 64	209	347	138	201	340	139	410	687	277
55 - 59	273	297	24	228	310	82	501	607	106
50 - 54	348	333	-15	335	332	-3	683	665	-18
45 - 49	266	398	132	283	365	82	549	763	214
40 - 44	306	391	85	294	401	107	600	792	192
35 - 39	362	357	-5	338	379	41	700	736	36
30 - 34	313	306	-7	362	294	-68	675	600	-75
25 - 29	296	262	-34	347	347	0	643	609	-34
20 - 24	262	264	2	236	267	31	498	531	33
15 - 19	238	313	75	262	316	54	500	629	129
10 - 14	324	368	44	300	334	34	624	702	78
5 - 9	299	357	58	284	331	47	583	688	105
0 - 4	292	315	23	317	306	-11	609	621	12
All Ages	4,441	5,062	621	4,652	5,218	566	9,093	10,280	1,187

2011 (coloured bars) and 2001 (black marks) population by sex and quinary age

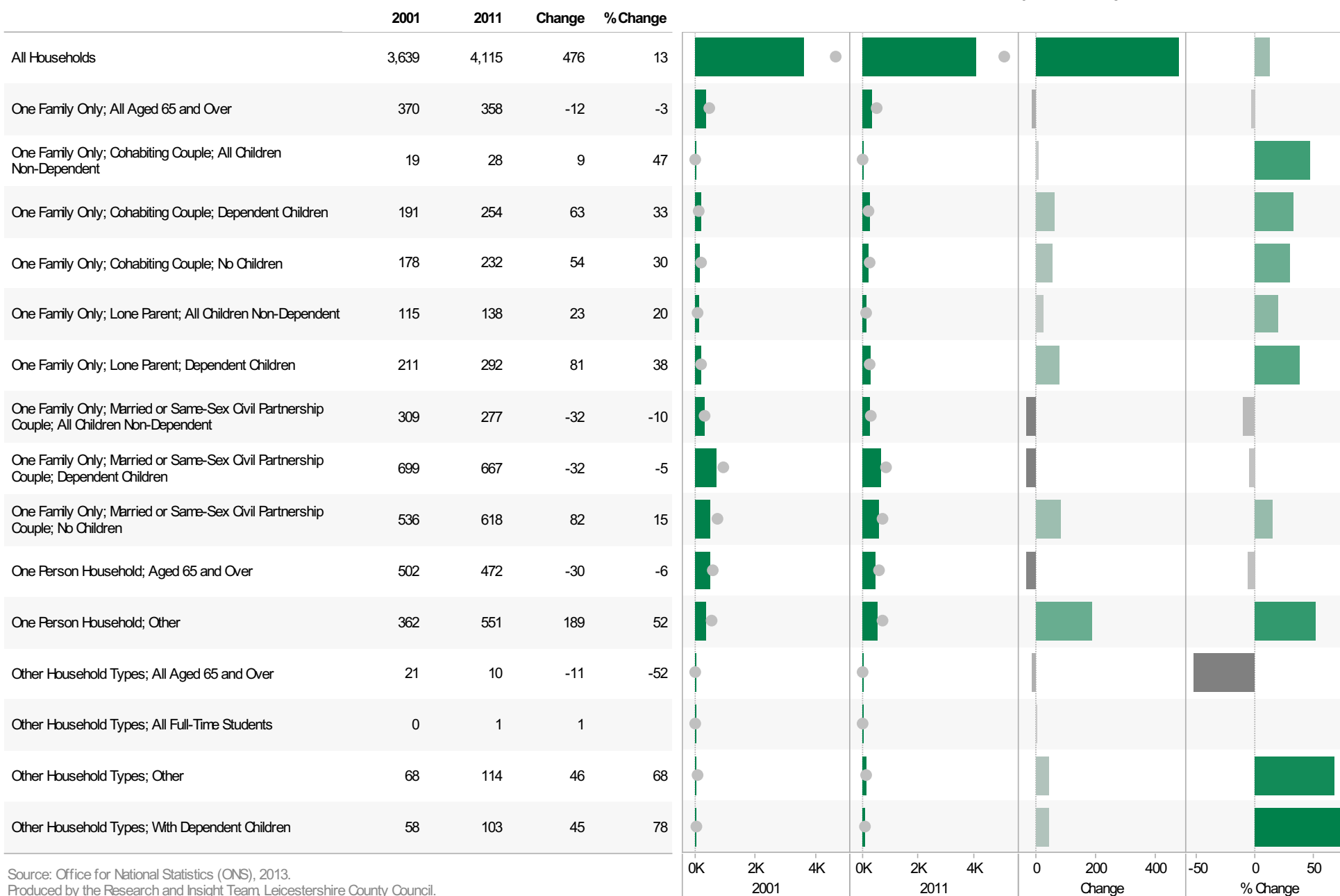


2001-11 Percentage change by sex and quinary age band



Warren Hills ED KS105EW : Household Composition, 2001-11

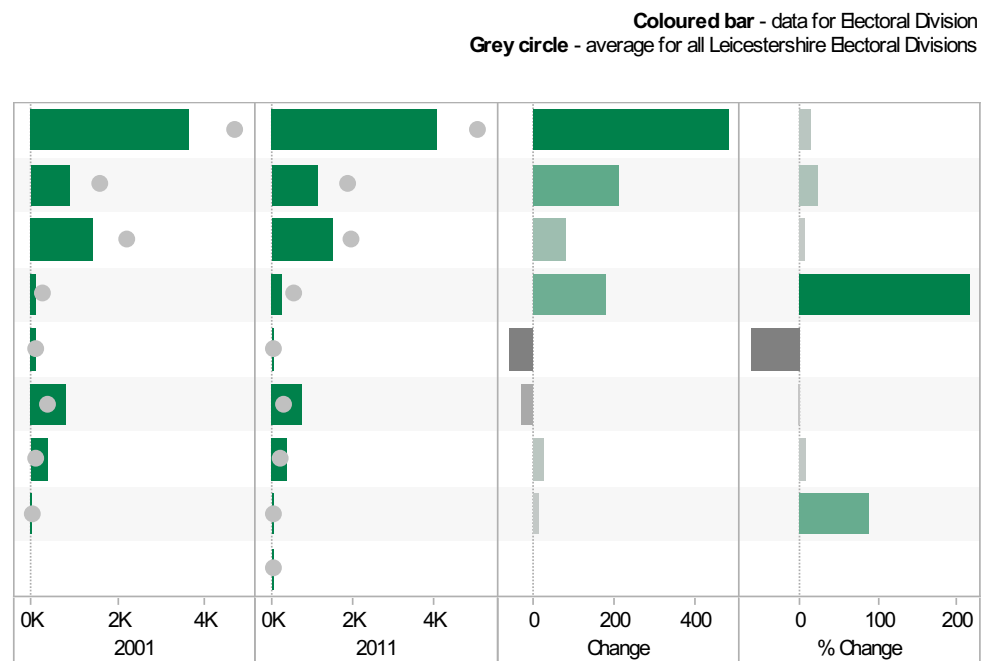
Coloured bar - data for Electoral Division
Grey circle - average for all Leicestershire Electoral Divisions



Source: Office for National Statistics (ONS), 2013.
Produced by the Research and Insight Team, Leicestershire County Council.

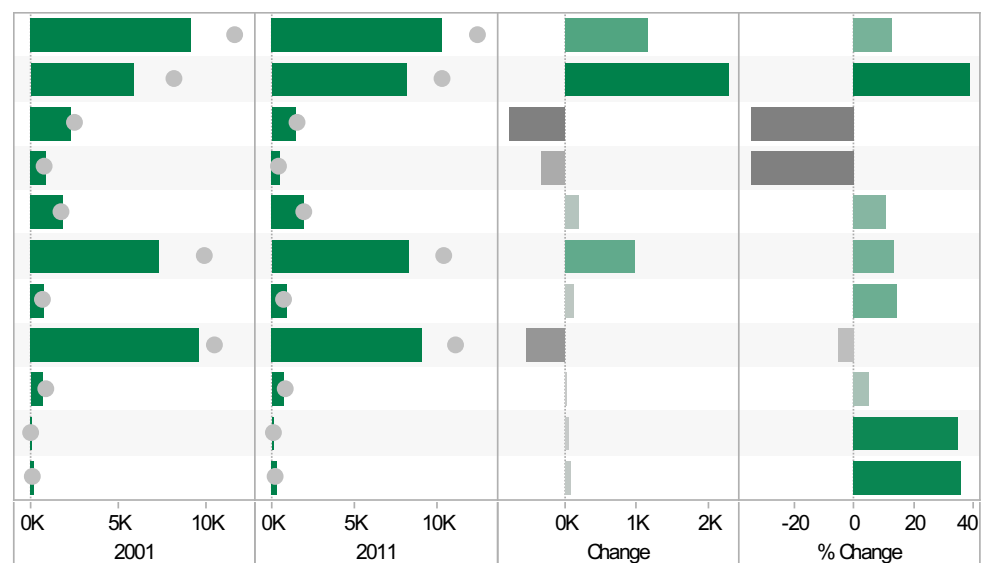
Warren Hills ED KS402EW: Tenure, 2001-11

	2001	2011	Change	% Change
All Households	3,636	4,115	479	13
Owned; Owned Outright	895	1,107	212	24
Owned; Owned with a Mortgage or Loan	1,411	1,492	81	6
Private Rented; Private Landlord or Letting Agency	83	262	179	216
Private Rented; Other	90	32	-58	-64
Social Rented; Rented from Council (Local Authority)	787	762	-25	-3
Social Rented; Other	355	383	28	8
Shared Ownership (Part Owned and Part Rented)	15	28	13	87
Living Rent Free		49		



Warren Hills ED KS301EW: Health and Provision of Unpaid Care, 2001-11

	2001	2011	Change	% Change
All usual residents	9,116	10,280	1,164	13
Very/ good Health	5,918	8,190	2,272	38
Fair health	2,275	1,490	-785	-35
Very/ bad Health	923	600	-323	-35
Day-to-day activities limited	1,802	1,988	186	10
Day-to-day activities not limited	7,314	8,292	978	13
Day-to-day activities limited a lot: Age 16 to 64	811	930	119	15
Provides no unpaid care	9,627	9,088	-539	-6
Provides 1 to 19 hours unpaid care a week	675	709	34	5
Provides 20 to 49 hours unpaid care a week	120	162	42	35
Provides 50 or more hours unpaid care a week	236	321	85	36



Warren Hills ED
KS201EW : Ethnic Group, 2001-11

Coloured bar - data for Electoral Division
Grey circle - average for all Leicestershire Electoral Divisions

	2001	2011	Change	% Change
All usual residents	9,126	10,280	1,154	13
White: English/Welsh/Scottish/Northern Irish/British	8,833	9,765	932	11
White: Irish	46	24	-22	-48
White: Other White	73	172	99	136
Asian/Asian British: Bangladeshi	6	1	-5	-83
Asian/Asian British: Chinese	14	26	12	86
Asian/Asian British: Indian	42	81	39	93
Asian/Asian British: Other Asian	6	17	11	183
Asian/Asian British: Pakistani	6	2	-4	-67
Black/African/Caribbean/Black British: African	4	21	17	425
Black/African/Caribbean/Black British: Caribbean	6	20	14	233
Black/African/Caribbean/Black British: Other Black	3	3	0	0
Mixed/multiple ethnic group: Other Mixed	16	11	-5	-31
Mixed/multiple ethnic group: White and Asian	23	46	23	100
Mixed/multiple ethnic group: White and Black African	3	5	2	67
Mixed/multiple ethnic group: White and Black Caribbean	37	58	21	57
Other ethnic group: Any other ethnic group	6	28	22	367

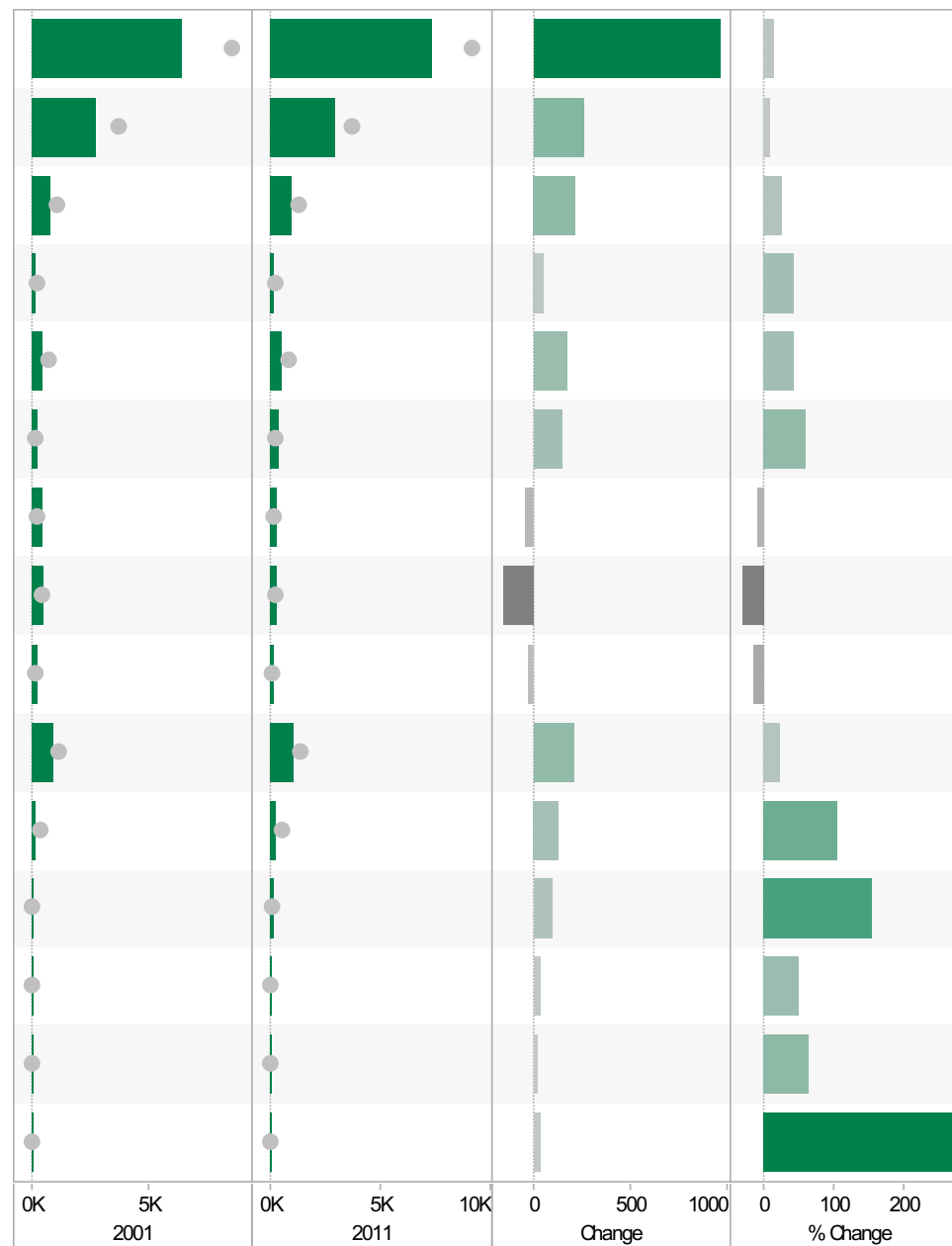


Source: Office for National Statistics (ONS), 2013.
 Produced by the Research and Insight Team, Leicestershire County Council.

Warren Hills ED
KS601EW : Economic Activity, 2001-11

Coloured bar - data for Electoral Division
Grey circle - average for all Leicestershire Electoral Divisions

	2001	2011	Change	% Change
All usual residents aged 16 and over	6,406	7,371	965	15
Economically active: Employee: Full-time	2,729	2,990	261	10
Economically active: Employee: Part-time	792	1,006	214	27
Economically active: Full-time student	122	174	52	43
Economically active: Self-employed	399	574	175	44
Economically active: Unemployed	241	386	145	60
Economically inactive: Long-term sick or disabled	402	363	-39	-10
Economically inactive: Looking after home or family	501	343	-158	-32
Economically inactive: Other	196	169	-27	-14
Economically inactive: Retired	896	1,104	208	23
Economically inactive: Student (including full-time students)	128	262	134	105
Long-term unemployed	64	163	99	155
Unemployed: Age 16 to 24	78	117	39	50
Unemployed: Age 50 and over	36	59	23	64
Unemployed: Never worked	13	49	36	277

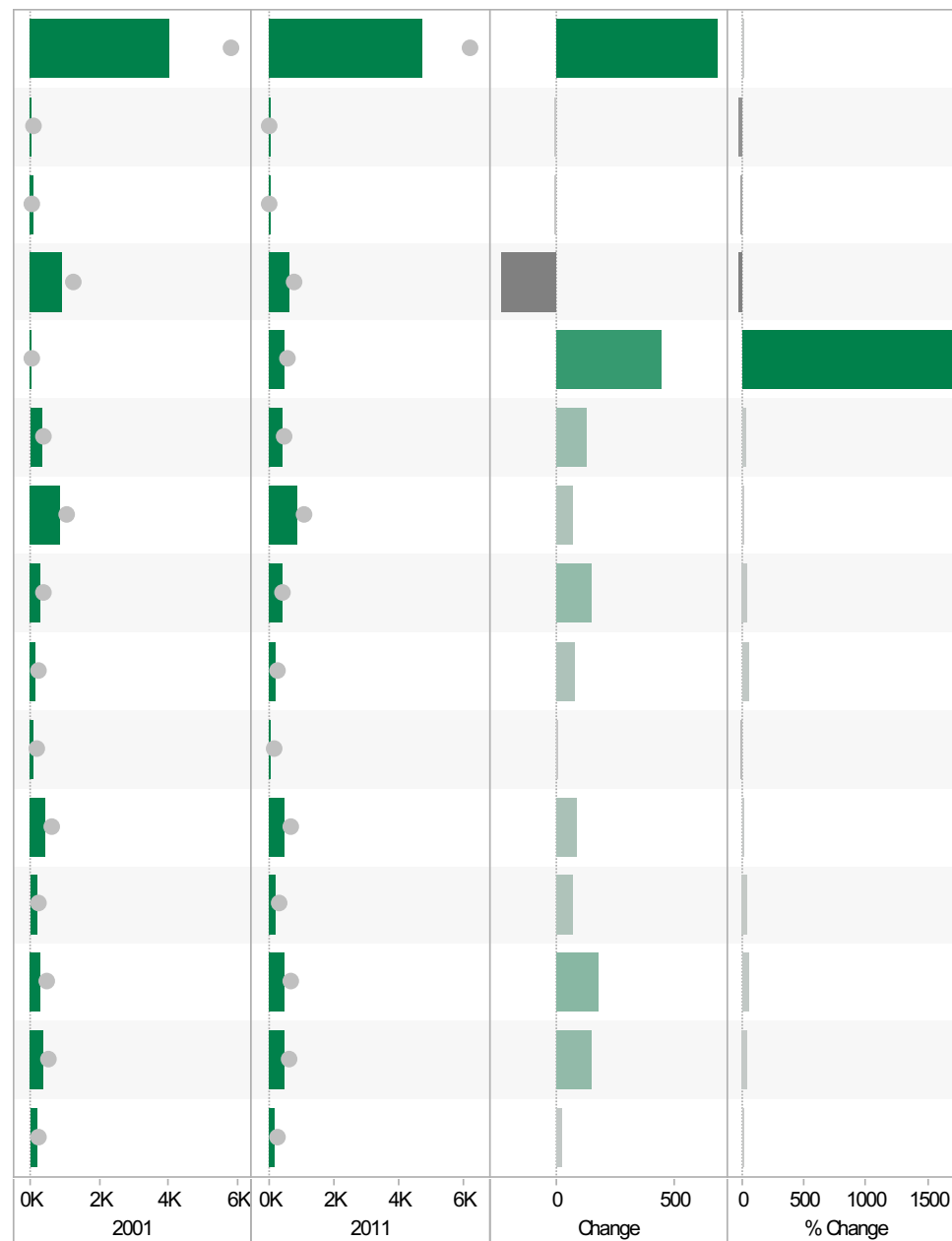


Source: Office for National Statistics (ONS), 2013.
 Produced by the Research and Insight Team, Leicestershire County Council.

Warren Hills ED
KS605EW : Industry, 2001-11

Coloured bar - data for Electoral Division
Grey circle - average for all Leicestershire Electoral Divisions

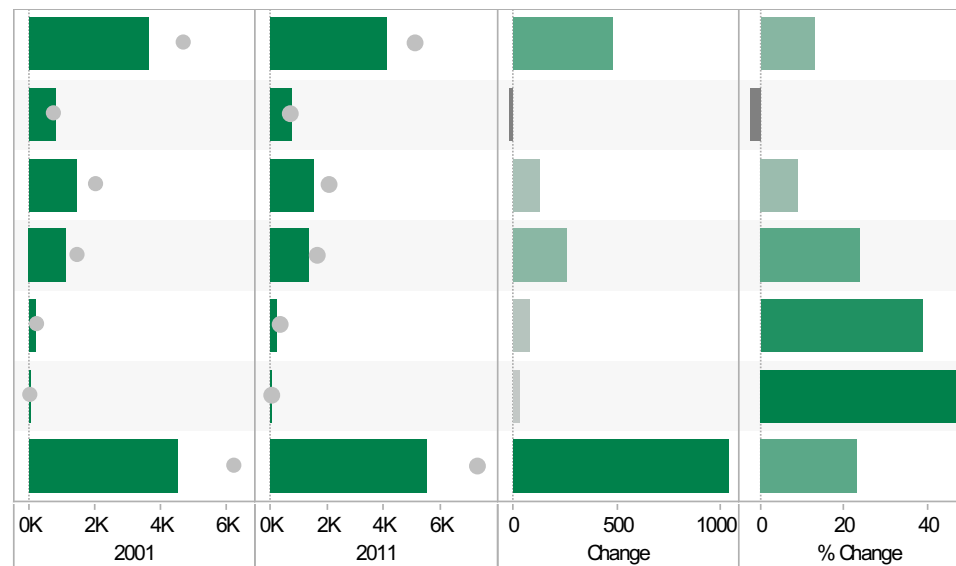
	2001	2011	Change	% Change
All usual residents aged 16 and over in employment	4,027	4,705	678	17
A Agriculture, forestry and fishing	35	28	-7	-20
B Mining and quarrying	89	77	-12	-13
C Manufacturing	888	648	-240	-27
D, F Electricity, gas, steam, air conditioning supply, water and sewerage	26	470	444	1,708
F Construction	311	432	121	39
G Wholesale and retail trade; repair of motor vehicles and motor cycles	836	906	70	8
H, J Transport, storage, information and communication	291	433	142	49
I Accommodation and food service activities	125	198	73	58
K Financial and insurance activities	91	86	-5	-5
L, M, N Real estate activities Professional, scientific and technical activities Administrative and support service activities	395	479	84	21
O Public administration and defence; compulsory social security	158	228	70	44
P Education	276	451	175	63
Q Human health and social work activities	342	489	147	43
R, S, T, U Other	164	185	21	13



Source: Office for National Statistics (ONS), 2013.
Produced by the Research and Insight Team, Leicestershire County Council.

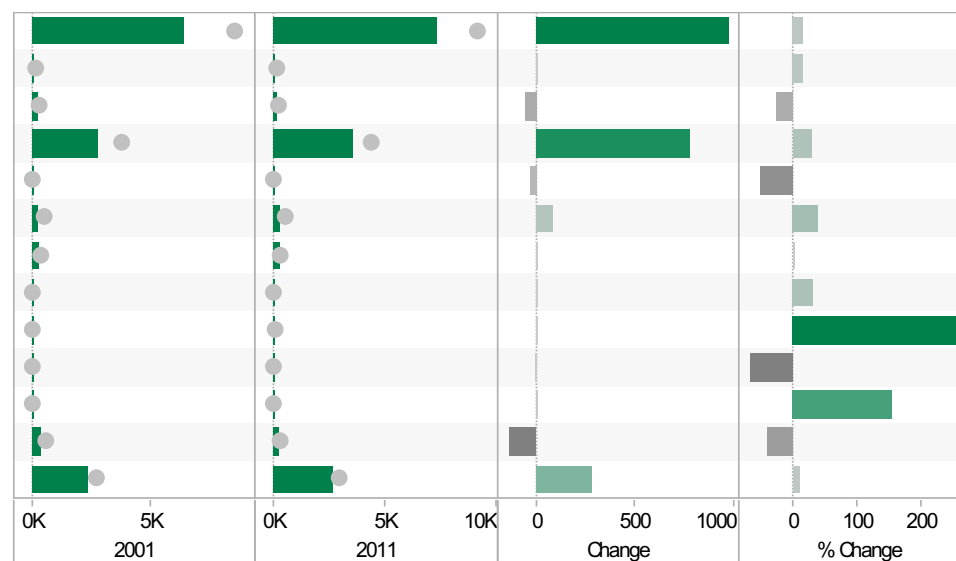
Warren Hills ED KS404EW : Car and Van Availability, 2001-11

	2001	2011	Change	% Change
All Households	3,635	4,115	480	13
No Cars or Vans in Household	834	813	-21	-3
1 Car or Van in Household	1,443	1,574	131	9
2 Cars or Vans in Household	1,095	1,356	261	24
3 Cars or Vans in Household	205	285	80	39
4 or More Cars or Vans in Household	58	87	29	50
All Cars or Vans in the Area	4,490	5,525	1,035	23



Warren Hills ED QS701EW : Method of Travel to Work, 2001-11

	2001	2011	Change	% Change
All Usual Residents Aged 16 to 74	6,397	7,371	974	15
Bicycle	87	102	15	17
Bus, Minibus or Coach	217	162	-55	-25
Driving a Car or Van	2,739	3,523	784	29
Motorcycle, Scooter or Moped	69	34	-35	-51
On Foot	215	303	88	41
Passenger in a Car or Van	311	310	-1	0
Taxi	16	21	5	31
Train	4	15	11	275
Underground, Metro, Light Rail, Tram	3	1	-2	-67
Other Method of Travel to Work	9	23	14	156
Work Mainly at or From Home	349	211	-138	-40
Not in Employment	2,378	2,666	288	12



If you require information contained in this leaflet in another version e.g. large print, Braille, tape or alternative language please telephone: 0116 305 6803, Fax: 0116 305 7271 or Minicom: 0116 305 6160.

ਜੇ ਆਪ ਆ ਮਾਭਿਨੀ ਆਪਨੀ ਆਧਾਮਾਂ ਸਮਝਵਾਮਾਂ ਥੋੜੀ ਮਦਦ ਈਝਰਨਾਂ ਡੋ ਤੋ 0116 305 6803 ਨੰਬਰ ਪਰ ਝੋਨ ਕਰਥੋ ਅਨੇ ਅਮੇ ਆਪਨੇ ਮਦਦ ਕਰਵਾ ਅਵਥਾ ਕਰੀਥੁੰ.

ਜੇਕਰ ਤੁਹਾਨੂੰ ਇਸ ਜਾਣਕਾਰੀ ਨੂੰ ਸਮਝਣ ਵਿਚ ਕੁਝ ਮਦਦ ਚਾਹੀਦੀ ਹੈ ਤਾਂ ਕਿਰਪਾ ਕਰਕੇ 0116 305 6803 ਨੰਬਰ ਤੇ ਫੋਨ ਕਰੋ ਅਤੇ ਅਸੀਂ ਤੁਹਾਡੀ ਮਦਦ ਲਈ ਕਿਸੇ ਦਾ ਪ੍ਰਬੰਧ ਕਰ ਦਵਾਂਗੇ।

এই তথ্য নিজের ভাষায় বুঝার জন্য আপনার যদি কোন সাহায্যের প্রয়োজন হয়, তবে 0116 305 6803 এই নম্বরে ফোন করলে আমরা উপযুক্ত ব্যক্তির ব্যবস্থা করবো।

اگر آپ کو یہ معلومات سمجھنے میں کچھ مدد درکار ہے تو براہ مہربانی اس نمبر پر کال کریں اور ہم آپ کی مدد کے لئے کسی کا انتظام کر دیں گے۔ 0116 305 6803

假如閣下需要幫助，用你的語言去明白這些資訊，請致電 0116 305 6803，我們會安排有關人員為你提供幫助。

Jeżeli potrzebujesz pomocy w zrozumieniu tej informacji w Twoim języku, zadzwoń pod numer 0116 305 6803, a my Ci dopomożemy.

Research & Insight Team
Strategy, Partnerships & Communities
Chief Executive's Department
Leicestershire County Council
County Hall
Glenfield
Leicester
LE3 8RA

ri@leics.gov.uk
www.lsr-online.org