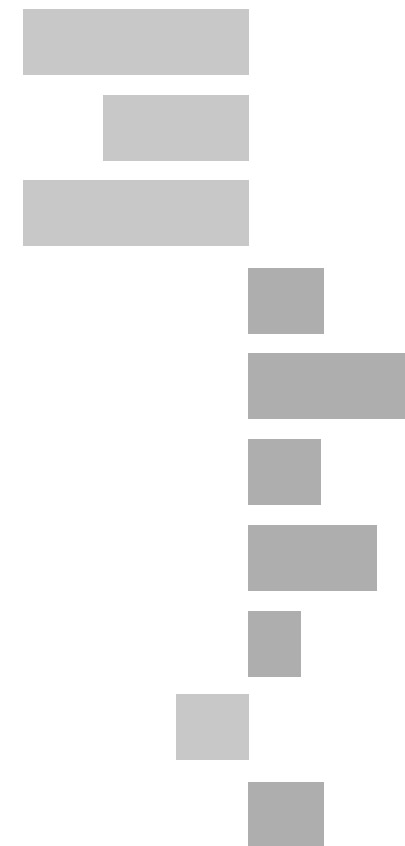


# Earl Shilton Electoral Division

## 2011 Census Key Statistics

Alex Lea  
May 2013

Research and Insight Team  
Leicestershire County Council



**Alex Lea**

Research & Insight Manager

Research & Insight Team  
Strategy, Partnerships & Communities  
Leicestershire County Council  
County Hall  
Glenfield  
Leicester LE3 8RB

Tel 0116 305 6803

Email [alex.lea@leics.gov.uk](mailto:alex.lea@leics.gov.uk)

Produced by the Research and Insight Team at Leicestershire County Council.

Whilst every effort has been made to ensure the accuracy of the information contained within this report, Leicestershire County Council cannot be held responsible for any errors or omission relating to the data contained within the report.

## CONTENTS

### Introduction

About this Report	4
2011 Census	4
Data	5
Census Geography	5
Indicator Changes 2001-11	6

### Population

KS101EW - Usual Resident Population	7
KS102EW - Age Structure	7

### Households

KS105EW - Household Composition	8
KS402EW - Tenure	9

### Health and Caring

KS301EW - Health and Provision of Unpaid Care	9
---	---

### Ethnicity

KS201EW - Ethnic Group	10
------------------------	----

### Economy

KS601EW - Economic Activity	11
KS605EW - Industry	12

### Transport

KS404EW - Car and Van Availability	13
QS701EW- Method of Travel to Work	13

## INTRODUCTION

### ABOUT THIS REPORT

This report provides a broad overview of the 2011 Census Key Statistics data, released by the Office for National Statistics on 30th January 2013, as part of the Second Release. This report summarises a selection of key headline datasets of this release for Leicestershire Electoral Divisions (EDs).

The Research and Insight Team at Leicestershire County Council has used data from the Second release to create an interactive Tableau dashboard containing 32 datasets covering the following geographies:

- England
- East Midlands
- East Midlands counties . Including Leicestershire
- Leicester City and Rutland Unitary Authorities
- Leicestershire districts

In addition, a headline report covers the results for Leicestershire and the seven districts that make up the county. The dashboard and report are available at the following links:

#### Census 2011 Key Statistics Dashboard

<http://public.tableausoftware.com/views/LAKeyStatsDashboard/Dashboard>

May 2013

#### Census 2011 Key Statistics Headline Report

[http://www.lsr-online.org/reports/census\\_2011\\_key\\_statistics\\_headline\\_report/download/1/Census%202011%20Second%20Release%20FINAL.pdf](http://www.lsr-online.org/reports/census_2011_key_statistics_headline_report/download/1/Census%202011%20Second%20Release%20FINAL.pdf)

### 2011 CENSUS

Census statistics help paint a picture of the nation and how we live. They provide a detailed snapshot of the population and its characteristics, and underpin funding allocation to provide public services.<sup>1</sup> Data from the 2011 Census is made available at a variety of different levels of geography and in various releases.

The Key Statistics data covers a broad range of socio-economic topics, including data on ethnicity, health and employment. Each Key Statistic dataset is referred to by its unique three-digit code with the 'KS' prefix to denote a Key statistic (e.g. KS101). These are used throughout the report.

A full list of the 35 Key Statistics data tables are available here:

<http://www.ons.gov.uk/ons/publications/re-reference-tables.html?edition=tcm%3A77-286262>

<sup>1</sup> Office for National Statistics (ONS), 2013.

Further results from the census will be released throughout 2013, for more information, please visit:

<http://www.lsr-online.org/census-2011.html>

More information on the 2011 Census can be found here:

<http://www.ons.gov.uk/ons/guide-method/census/2011/index.html>

## DATA

Data has been compiled for Leicestershire Electoral Divisions, covering the key datasets from the 2011 Census Key statistics.

Figures for 2011 and 2001 are included, along with the overall and percentage change between the two censuses. Data for each indicator is presented in a table and chart.

Population data is displayed in a table, a population pyramid and a chart showing percentage change between 2001 and 2011. All other data is displayed in tables, and charts. Charts for change between 2001 and 2011 are coloured according to the degree of change between the two censuses; grey corresponds to smallest change and green the largest change. A marker indicates the average figure for all Leicestershire Electoral Divisions.

## GEOGRAPHY

Maps for all County Council Electoral Divisions can be found here:

[http://www.leics.gov.uk/index/your\\_council/local\\_democracy/conductofcouncillorsandemployees/electoraldivisionmapsindex/electoraldivisionmaps.htm](http://www.leics.gov.uk/index/your_council/local_democracy/conductofcouncillorsandemployees/electoraldivisionmapsindex/electoraldivisionmaps.htm)

As Census data is not made available for Electoral Divisions, smaller areas, called Lower Super Output Areas (LSOAs) have been used as building blocks for the figures included in this report. LSOAs are small parcels of geography, containing a minimum of 1,000 people, a maximum of 3,000 and an average of 1,500. LSOAs were initially developed for the 2001 Census and are used to release a range of neighbourhood-level datasets from various sources. There are 396 LSOAs in Leicestershire.

In some instances, LSOAs do not fit neatly within Electoral Divisions and in these cases, population weighted centroids - representing the 'centre of gravity' for population within an area - have been used in order to assign each LSOA to an Electoral Division. Electoral Divisions that fall within this category are indicated with a (\*).

More information on Lower Super Output Areas can be found here:

<http://www.ons.gov.uk/ons/guide-method/geography/beginner-s-guide/census/super-output-areas--soas-/index.html>

## INDICATOR CHANGES 2001-11

The following questions were asked in slightly different ways in 2011 compared to 2001. As such, care should be taken when making comparison between years.

### **KS201EW : Ethnic Group**

Asian/Asian British: Chinese  
Mixed/multiple ethnic group: Other Mixed  
Mixed/multiple ethnic group: White and Asian  
Mixed/multiple ethnic group: White and Black African  
Mixed/multiple ethnic group: White and Black Caribbean  
Other ethnic group: Any other ethnic group  
White: English/Welsh/Scottish/Northern Irish/British  
White: Other White

### **KS301EW : Health and Provision of Unpaid Care**

Day-to-day activities limited  
Day-to-day activities limited: Age 16 to 64  
Day-to-day activities not limited  
Fair health  
Very/ bad Health  
Very/ good Health

### **KS601EW : Economic Activity**

All usual residents aged 16 and over  
Economically active: Employee: Full-time  
Economically active: Employee: Part-time  
Economically active: Full-time student

Economically active: Self-employed  
Economically active: Unemployed  
Economically inactive: Long-term sick or disabled  
Economically inactive: Looking after home or family  
Economically inactive: Other  
Economically inactive: Retired  
Economically inactive: Student (including full-time)  
Long-term unemployed  
Unemployed: Age 50 and over  
Unemployed: Never worked

### **KS605EW : Industry**

All usual residents aged 16 and over in employment  
A Agriculture, forestry and fishing  
B Mining and quarrying  
C Manufacturing  
D, F Electricity, gas, steam, air conditioning supply etc  
F Construction  
G Wholesale and retail trade; repair of motor vehicles etc  
H, J Transport, storage, information and communication  
I Accommodation and food service activities  
K Financial and insurance activities  
L,M,N Real estate activities Professional, scientific etc  
O Public administration and defence etc  
P Education  
Q Human health and social work activities  
R, S, T, U Other

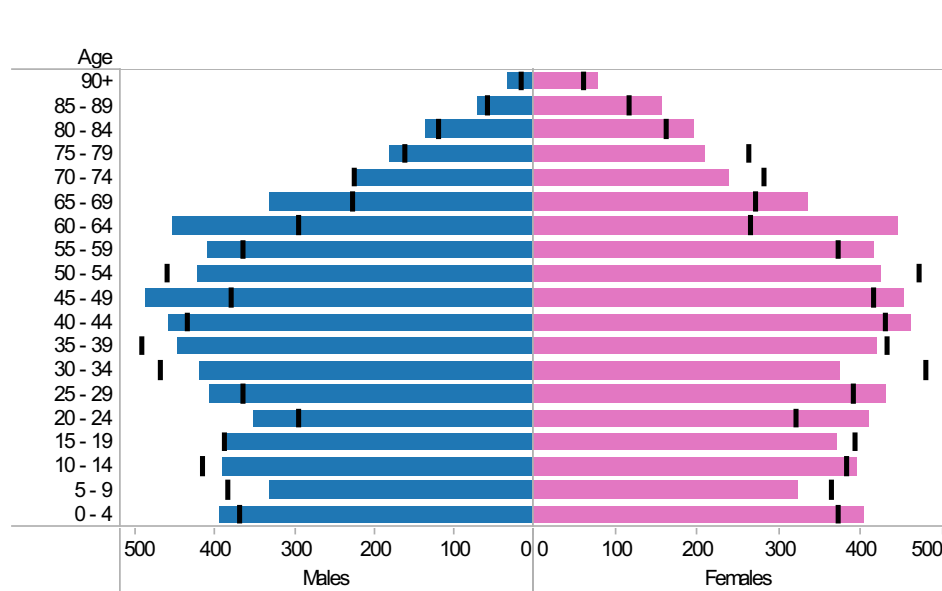
# Earl Shilton\* ED: KS101EW : Usual Resident Population, KS102EW : Age Structure

■ Males
 ■ Females
 ■ Persons

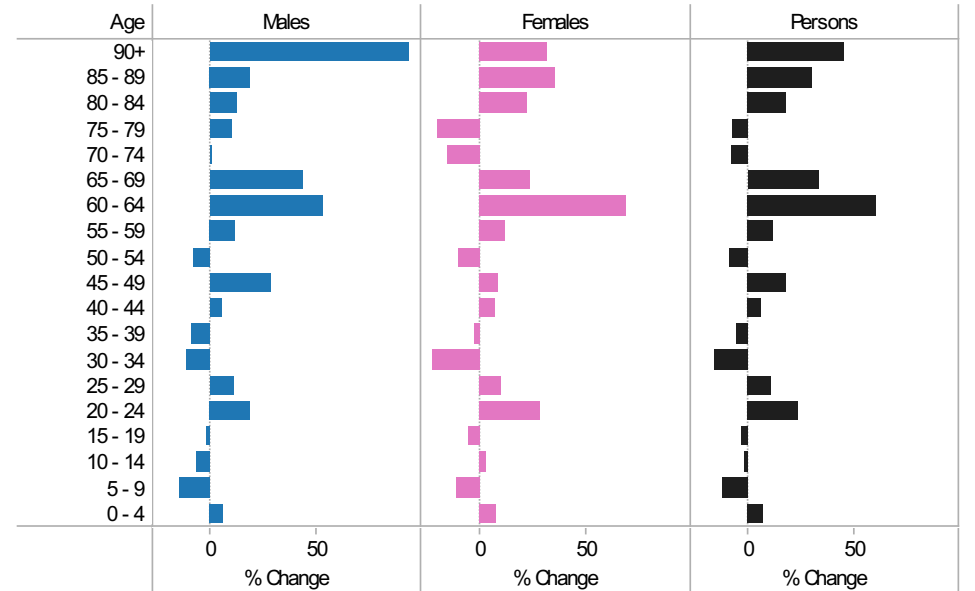
## 2001-11 Population by sex and quinary age band

Age	Males			Females			Persons		
	2001	2011	Change 2001-11	2001	2011	Change 2001-11	2001	2011	Change 2001-11
90+	16	31	15	59	78	19	75	109	34
85 - 89	59	70	11	115	156	41	174	226	52
80 - 84	120	135	15	160	196	36	280	331	51
75 - 79	163	180	17	211	211	-50	424	391	-33
70 - 74	227	226	-1	281	240	-41	508	466	-42
65 - 69	230	331	101	271	337	66	501	668	167
60 - 64	297	454	157	263	445	182	560	899	339
55 - 59	367	409	42	372	416	44	739	825	86
50 - 54	462	423	-39	471	425	-46	933	848	-85
45 - 49	381	488	107	415	453	38	796	941	145
40 - 44	436	458	22	428	461	33	864	919	55
35 - 39	495	448	-47	430	420	-10	925	868	-57
30 - 34	472	419	-53	479	375	-104	951	794	-157
25 - 29	368	408	40	390	430	40	758	838	80
20 - 24	297	352	55	319	410	91	616	762	146
15 - 19	391	385	-6	391	370	-21	782	755	-27
10 - 14	418	390	-28	381	395	14	799	785	-14
5 - 9	387	331	-56	363	324	-39	750	655	-95
0 - 4	372	395	23	372	403	31	744	798	54
All Ages	5,958	6,333	375	6,221	6,545	324	12,179	12,878	699

## 2011 (coloured bars) and 2001 (black marks) population by sex and quinary age age

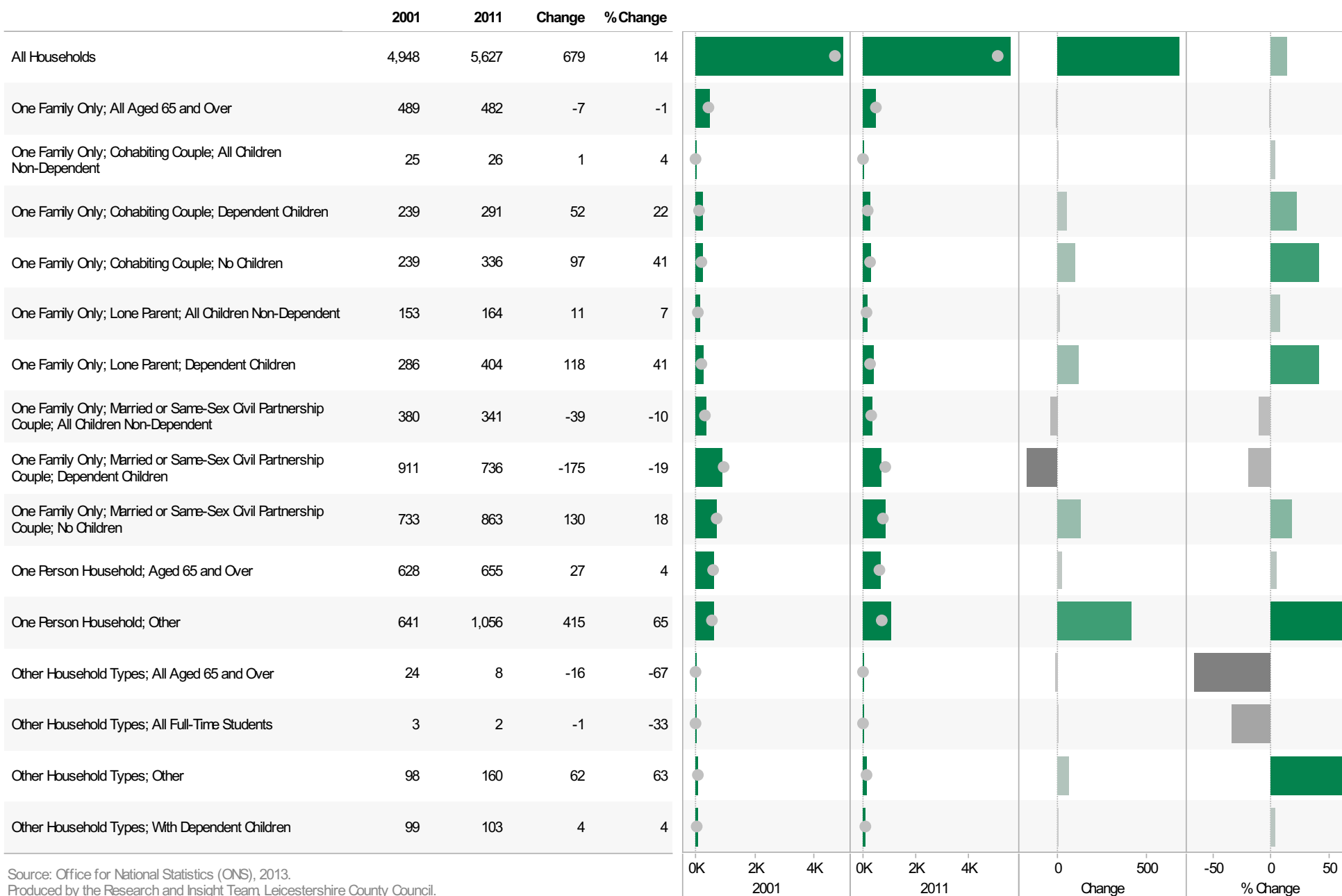


## 2001-11 Percentage change by sex and quinary age band



# Earl Shilton\* ED KS105EW : Household Composition, 2001-11

Coloured bar - data for Electoral Division  
Grey circle - average for all Leicestershire Electoral Divisions

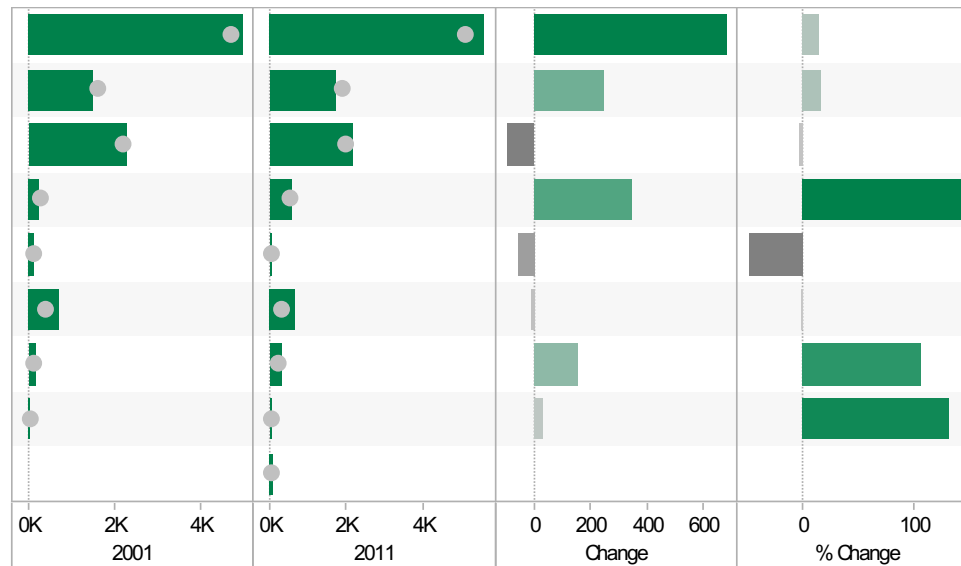


Source: Office for National Statistics (ONS), 2013.  
Produced by the Research and Insight Team, Leicestershire County Council.



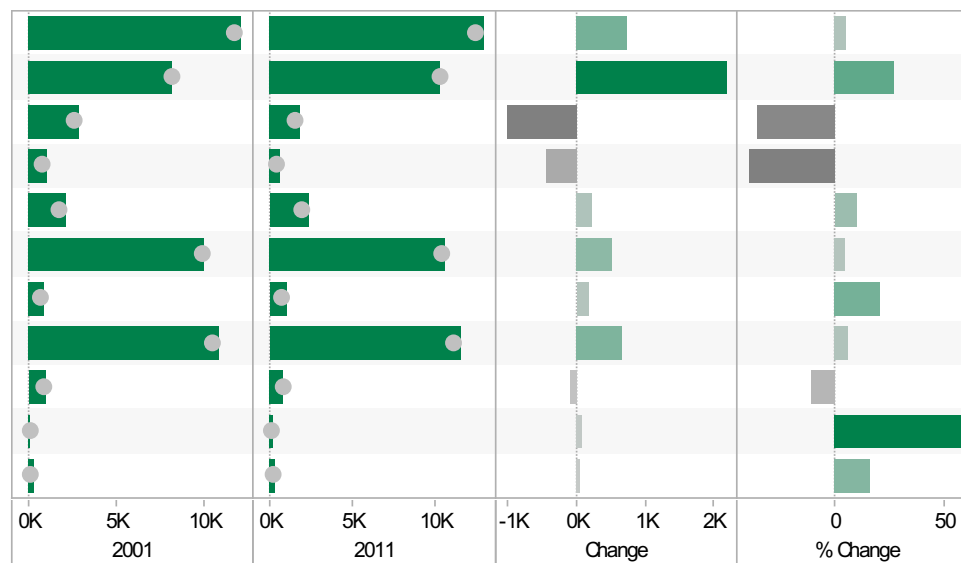
**Earl Shilton\* ED  
KS402EW: Tenure, 2001-11**

	2001	2011	Change	% Change
All Households	4,946	5,627	681	14
Owned; Owned Outright	1,484	1,730	246	17
Owned; Owned with a Mortgage or Loan	2,255	2,158	-97	-4
Private Rented; Private Landlord or Letting Agency	236	586	350	148
Private Rented; Other	111	55	-56	-50
Social Rented; Rented from Council (Local Authority)	686	674	-12	-2
Social Rented; Other	149	307	158	106
Shared Ownership (Part Owned and Part Rented)	25	58	33	132
Living Rent Free		59		



**Earl Shilton\* ED  
KS301EW: Health and Provision of Unpaid Care, 2001-11**

	2001	2011	Change	% Change
All usual residents	12,141	12,878	737	6
Very/ good Health	8,123	10,295	2,172	27
Fair health	2,918	1,912	-1,006	-34
Very/ bad Health	1,100	671	-429	-39
Day-to-day activities limited	2,108	2,330	222	11
Day-to-day activities not limited	10,033	10,548	515	5
Day-to-day activities limited a lot: Age 16 to 64	913	1,101	188	21
Provides no unpaid care	10,808	11,467	659	6
Provides 1 to 19 hours unpaid care a week	979	878	-101	-10
Provides 20 to 49 hours unpaid care a week	126	202	76	60
Provides 50 or more hours unpaid care a week	284	331	47	17

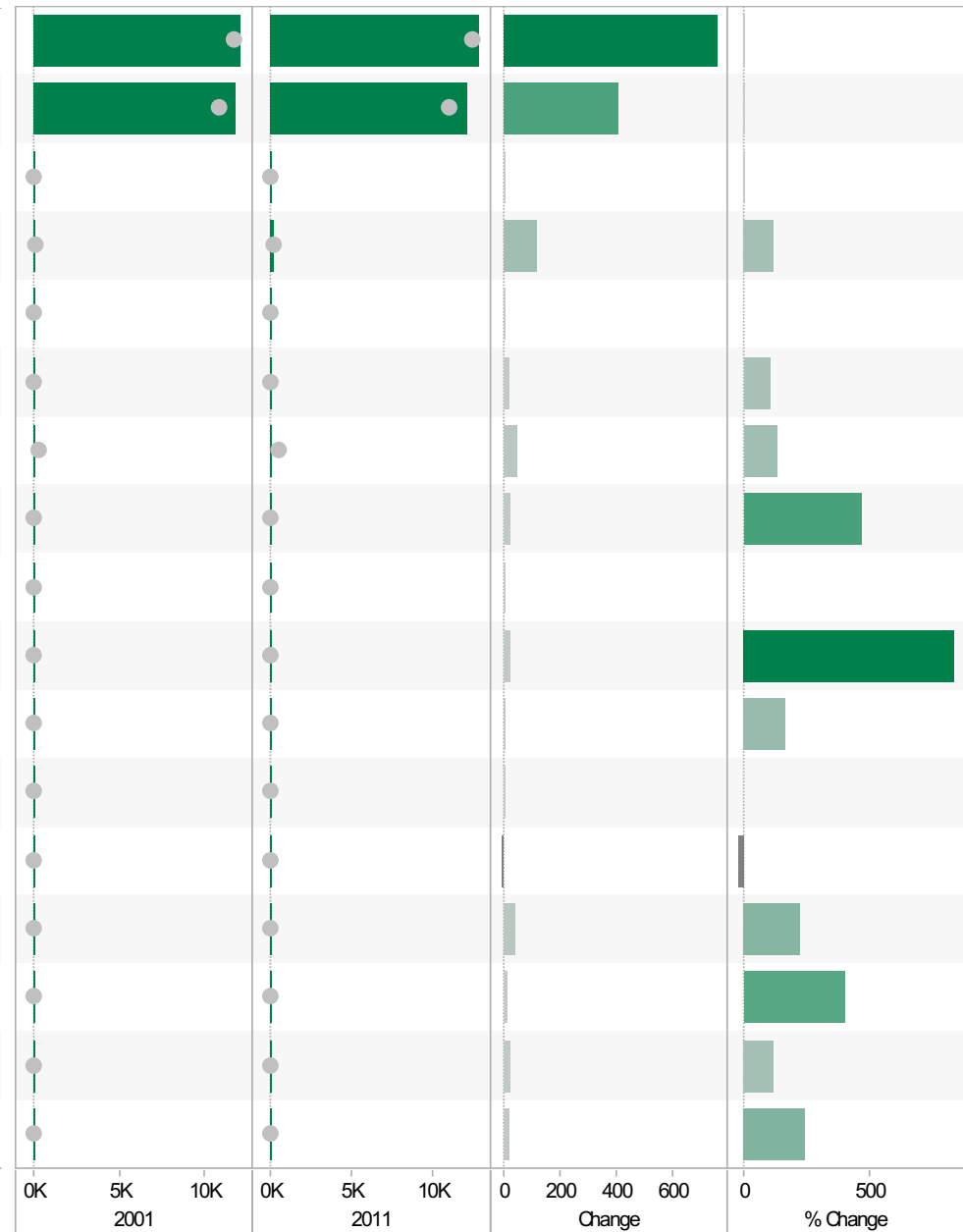


Source: Office for National Statistics (ONS), 2013.  
Produced by the Research and Insight Team, Leicestershire County Council.

**Earl Shilton\* ED**  
**KS201EW : Ethnic Group, 2001-11**

**Coloured bar** - data for Electoral Division  
**Grey circle** - average for all Leicestershire Electoral Divisions

	2001	2011	Change	% Change
All usual residents	12,121	12,878	757	6
White: English/Welsh/Scottish/Northern Irish/British	11,827	12,234	407	3
White: Irish	48	49	1	2
White: Other White	98	216	118	120
Asian/Asian British: Bangladeshi	0	4	4	
Asian/Asian British: Chinese	17	35	18	106
Asian/Asian British: Indian	35	82	47	134
Asian/Asian British: Other Asian	6	34	28	467
Asian/Asian British: Pakistani	0	2	2	
Black/African/Caribbean/Black British: African	3	28	25	833
Black/African/Caribbean/Black British: Caribbean	6	16	10	167
Black/African/Caribbean/Black British: Other Black	0	0	0	
Mixed/multiple ethnic group: Other Mixed	29	23	-6	-21
Mixed/multiple ethnic group: White and Asian	20	65	45	225
Mixed/multiple ethnic group: White and Black African	3	15	12	400
Mixed/multiple ethnic group: White and Black Caribbean	20	44	24	120
Other ethnic group: Any other ethnic group	9	31	22	244

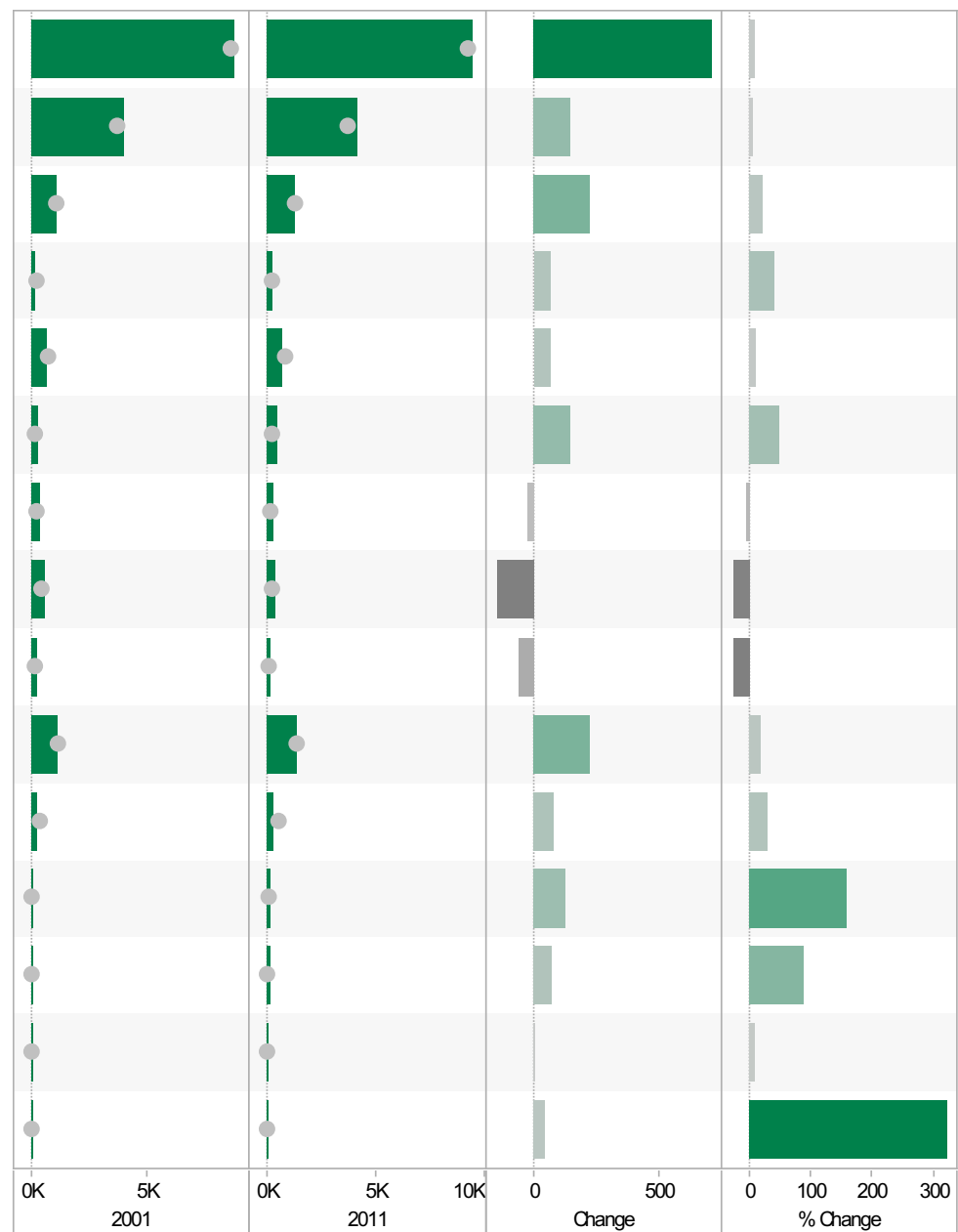


Source: Office for National Statistics (ONS), 2013.  
 Produced by the Research and Insight Team, Leicestershire County Council.

**Earl Shilton\* ED**  
**KS601EW : Economic Activity, 2001-11**

**Coloured bar** - data for Electoral Division  
**Grey circle** - average for all Leicestershire Electoral Divisions

	2001	2011	Change	% Change
All usual residents aged 16 and over	8,739	9,448	709	8
Economically active: Employee: Full-time	3,991	4,137	146	4
Economically active: Employee: Part-time	1,088	1,313	225	21
Economically active: Full-time student	165	230	65	39
Economically active: Self-employed	653	716	63	10
Economically active: Unemployed	303	449	146	48
Economically inactive: Long-term sick or disabled	360	335	-25	-7
Economically inactive: Looking after home or family	547	397	-150	-27
Economically inactive: Other	205	146	-59	-29
Economically inactive: Retired	1,175	1,398	223	19
Economically inactive: Student (including full-time students)	252	327	75	30
Long-term unemployed	77	199	122	158
Unemployed: Age 16 to 24	79	148	69	87
Unemployed: Age 50 and over	72	78	6	8
Unemployed: Never worked	14	59	45	321

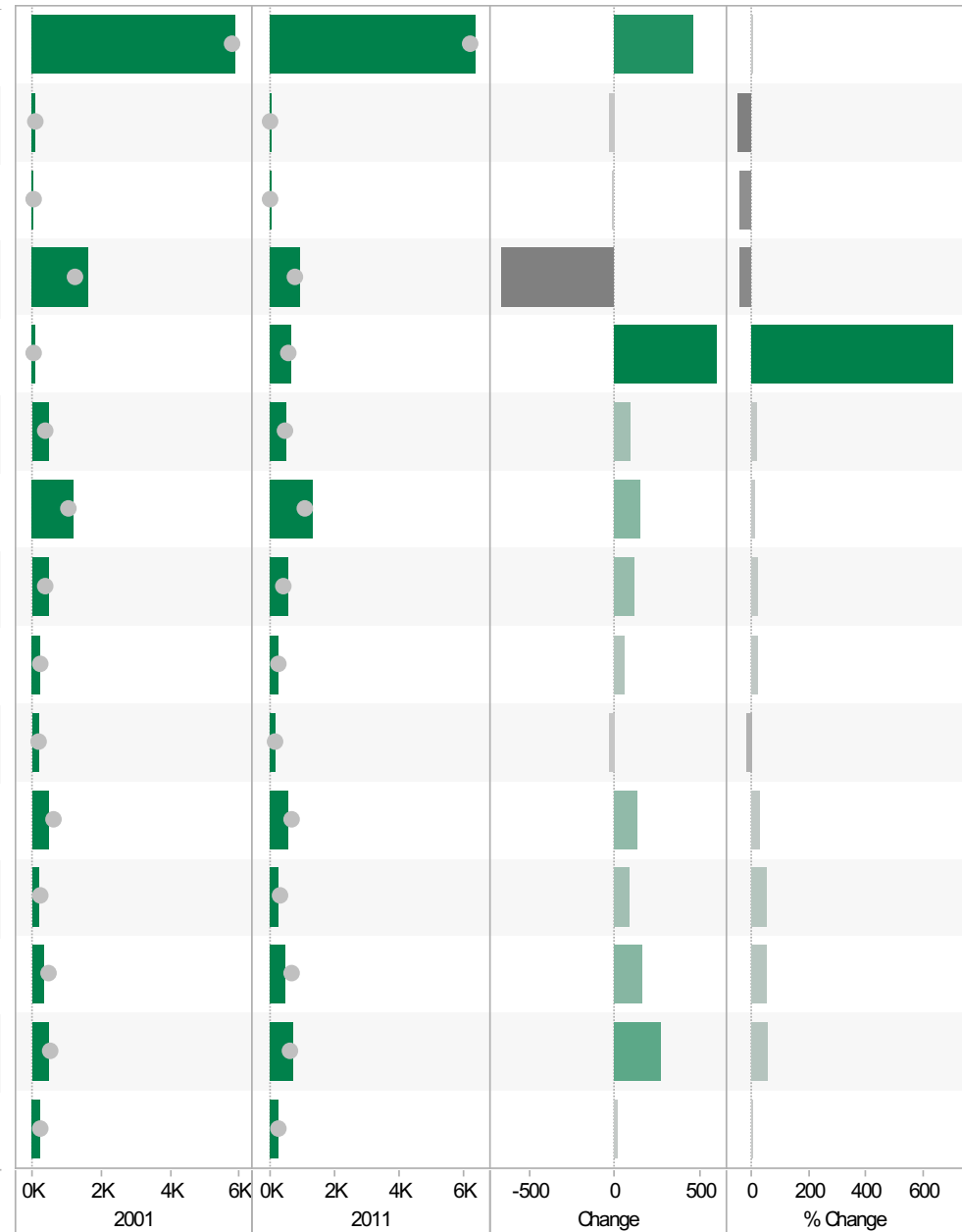


Source: Office for National Statistics (ONS), 2013.  
 Produced by the Research and Insight Team, Leicestershire County Council.

**Earl Shilton\* ED**  
**KS605EW : Industry, 2001-11**

**Coloured bar** - data for Electoral Division  
**Grey circle** - average for all Leicestershire Electoral Divisions

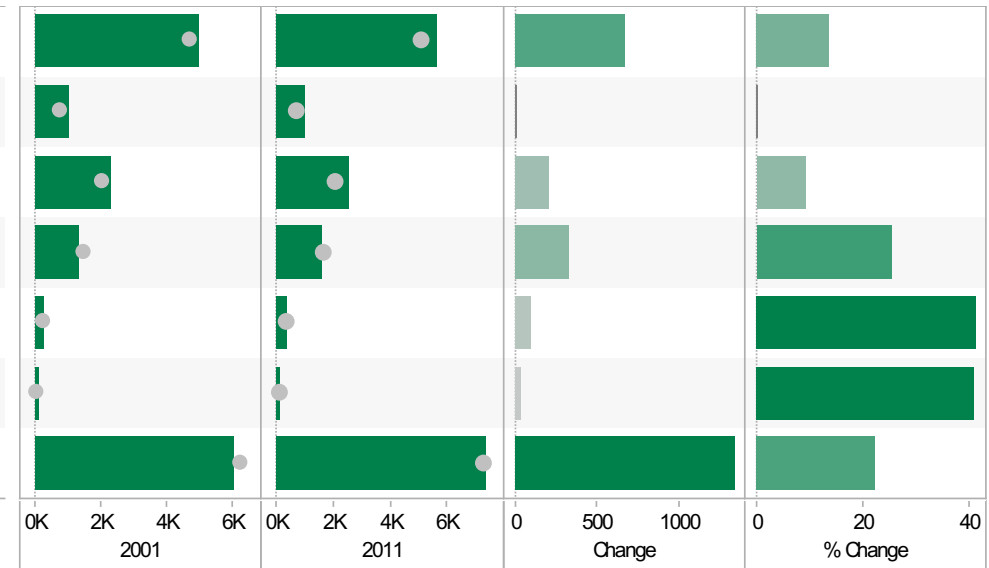
	2001	2011	Change	% Change
All usual residents aged 16 and over in employment	5,884	6,346	462	8
A Agriculture, forestry and fishing	57	30	-27	-47
B Mining and quarrying	30	19	-11	-37
C Manufacturing	1,615	950	-665	-41
D, F Electricity, gas, steam, air conditioning supply, water and sewerage	85	679	594	699
F Construction	445	536	91	20
G Wholesale and retail trade; repair of motor vehicles and motor cycles	1,191	1,349	158	13
H, J Transport, storage, information and communication	458	573	115	25
I Accommodation and food service activities	203	257	54	27
K Financial and insurance activities	181	153	-28	-15
L, M, N Real estate activities Professional, scientific and technical activities Administrative and support service activities	443	574	131	30
O Public administration and defence; compulsory social security	161	251	90	56
P Education	298	457	159	53
Q Human health and social work activities	479	752	273	57
R, S, T, U Other	238	252	14	6



Source: Office for National Statistics (ONS), 2013.  
 Produced by the Research and Insight Team, Leicestershire County Council.

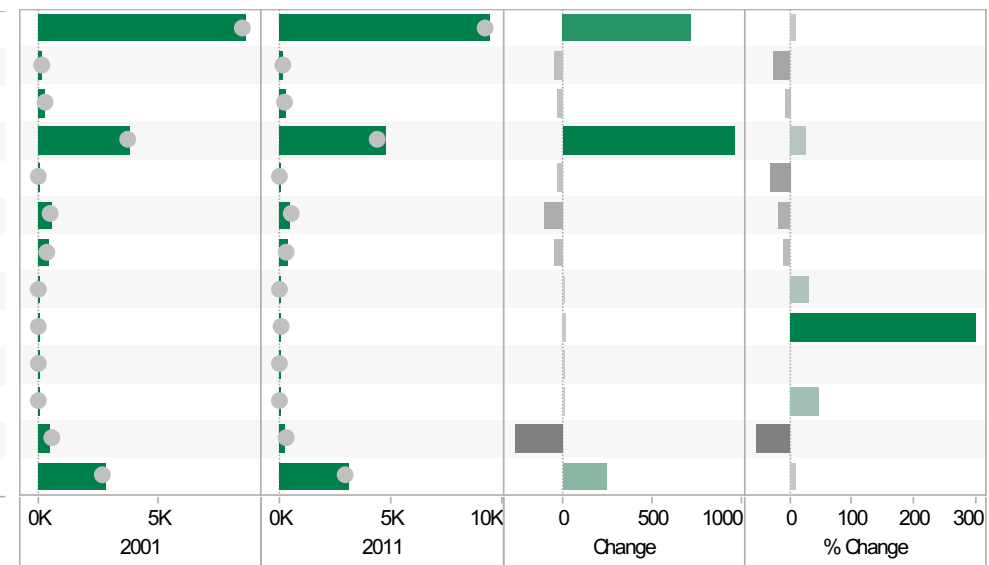
**Earl Shilton\* ED**  
**KS404EW : Car and Van Availability, 2001-11**

	2001	2011	Change	% Change
All Households	4,949	5,627	678	14
No Cars or Vans in Household	998	997	-1	0
1 Car or Van in Household	2,317	2,532	215	9
2 Cars or Vans in Household	1,310	1,641	331	25
3 Cars or Vans in Household	246	347	101	41
4 or More Cars or Vans in Household	78	110	32	41
All Cars or Vans in the Area	6,020	7,358	1,338	22



**Earl Shilton\* ED**  
**QS701EW : Method of Travel to Work, 2001-11**

	2001	2011	Change	% Change
All Usual Residents Aged 16 to 74	8,737	9,448	711	8
Bicycle	160	118	-42	-26
Bus, Minibus or Coach	303	277	-26	-9
Driving a Car or Van	3,807	4,761	954	25
Motorcycle, Scooter or Moped	96	66	-30	-31
On Foot	550	445	-105	-19
Passenger in a Car or Van	447	397	-50	-11
Taxi	13	17	4	31
Train	6	24	18	300
Underground, Metro, Light Rail, Tram	0	3	3	
Other Method of Travel to Work	15	22	7	47
Work Mainly at or From Home	482	216	-266	-55
Not in Employment	2,858	3,102	244	9



Source: Office for National Statistics (ONS), 2013.  
 Produced by the Research and Insight Team, Leicestershire County Council.

If you require information contained in this leaflet in another version e.g. large print, Braille, tape or alternative language please telephone: 0116 305 6803, Fax: 0116 305 7271 or Minicom: 0116 305 6160.

ਜੇ ਆਪ ਆ ਮਾਭਿਨੀ ਆਪਨੀ ਆਧਾਮਾਂ ਸਮਝਵਾਮਾਂ ਥੋੜੀ ਮਦਦ  
ਓਝੜਤਾਂ ਡੋ ਤੋ 0116 305 6803 ਨੰਬਰ ਪਰ ਫ਼ੋਨ ਕਰਥੋ ਅਨੇ  
ਅਮੇ ਆਪਨੇ ਮਦਦ ਕਰਵਾ ਅਵਝਥਾ ਕਰੀਥੁੰ.

ਜੇਕਰ ਤੁਹਾਨੂੰ ਇਸ ਜਾਣਕਾਰੀ ਨੂੰ ਸਮਝਣ ਵਿਚ ਕੁਝ ਮਦਦ ਚਾਹੀਦੀ  
ਹੈ ਤਾਂ ਕਿਰਪਾ ਕਰਕੇ 0116 305 6803 ਨੰਬਰ ਤੇ ਫ਼ੋਨ ਕਰੋ ਅਤੇ  
ਅਸੀਂ ਤੁਹਾਡੀ ਮਦਦ ਲਈ ਕਿਸੇ ਦਾ ਪ੍ਰਬੰਧ ਕਰ ਦਵਾਂਗੇ।

এই তথ্য নিজের ভাষায় বুঝার জন্য আপনার যদি কোন  
সাহায্যের প্রয়োজন হয়, তবে 0116 305 6803 এই নম্বরে  
ফোন করলে আমরা উপযুক্ত ব্যক্তির ব্যবস্থা করবো।

اگر آپ کو یہ معلومات سمجھنے میں کچھ مدد درکار ہے تو براہ مہربانی اس نمبر پر کال کریں  
0116 305 6803 اور ہم آپ کی مدد کے لئے کسی کا انتظام کر دیں گے۔

假如閣下需要幫助，用你的語言去明白這些資訊，  
請致電 0116 305 6803，我們會安排有關人員為你  
提供幫助。

Jeżeli potrzebujesz pomocy w zrozumieniu tej informacji  
w Twoim języku, zadzwoń pod numer 0116 305 6803,  
a my Ci dopomożemy.

Research & Insight Team  
Strategy, Partnerships & Communities  
Chief Executive's Department  
Leicestershire County Council  
County Hall  
Glenfield  
Leicester  
LE3 8RA

[ri@leics.gov.uk](mailto:ri@leics.gov.uk)  
[www.lsr-online.org](http://www.lsr-online.org)