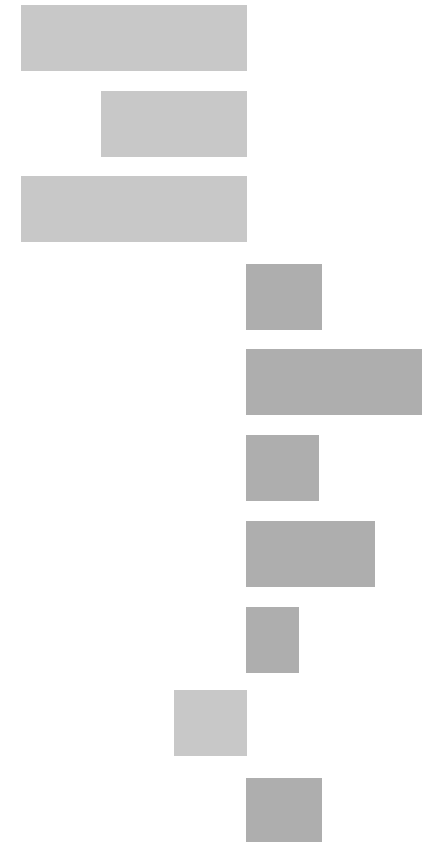


Hinckley Electoral Division

2011 Census Key Statistics

Alex Lea
May 2013

Research and Insight Team
Leicestershire County Council



Alex Lea

Research & Insight Manager

Research & Insight Team
Strategy, Partnerships & Communities
Leicestershire County Council
County Hall
Glenfield
Leicester LE3 8RB

Tel 0116 305 6803

Email alex.lea@leics.gov.uk

Produced by the Research and Insight Team at Leicestershire County Council.

Whilst every effort has been made to ensure the accuracy of the information contained within this report, Leicestershire County Council cannot be held responsible for any errors or omission relating to the data contained within the report.

CONTENTS

Introduction

About this Report	4
2011 Census	4
Data	5
Census Geography	5
Indicator Changes 2001-11	6

Population

KS101EW - Usual Resident Population	7
KS102EW - Age Structure	7

Households

KS105EW - Household Composition	8
KS402EW - Tenure	9

Health and Caring

KS301EW - Health and Provision of Unpaid Care	9
---	---

Ethnicity

KS201EW - Ethnic Group	10
------------------------	----

Economy

KS601EW - Economic Activity	11
KS605EW - Industry	12

Transport

KS404EW - Car and Van Availability	13
QS701EW- Method of Travel to Work	13

INTRODUCTION

ABOUT THIS REPORT

This report provides a broad overview of the 2011 Census Key Statistics data, released by the Office for National Statistics on 30th January 2013, as part of the Second Release. This report summarises a selection of key headline datasets of this release for Leicestershire Electoral Divisions (EDs).

The Research and Insight Team at Leicestershire County Council has used data from the Second release to create an interactive Tableau dashboard containing 32 datasets covering the following geographies:

- England
- East Midlands
- East Midlands counties . Including Leicestershire
- Leicester City and Rutland Unitary Authorities
- Leicestershire districts

In addition, a headline report covers the results for Leicestershire and the seven districts that make up the county. The dashboard and report are available at the following links:

Census 2011 Key Statistics Dashboard

<http://public.tableausoftware.com/views/LAKeyStatsDashboard/Dashboard>

May 2013

Census 2011 Key Statistics Headline Report

http://www.lsr-online.org/reports/census_2011_key_statistics_headline_report/download/1/Census%202011%20Second%20Release%20FINAL.pdf

2011 CENSUS

Census statistics help paint a picture of the nation and how we live. They provide a detailed snapshot of the population and its characteristics, and underpin funding allocation to provide public services.¹ Data from the 2011 Census is made available at a variety of different levels of geography and in various releases.

The Key Statistics data covers a broad range of socio-economic topics, including data on ethnicity, health and employment. Each Key Statistic dataset is referred to by its unique three-digit code with the 'KS' prefix to denote a Key statistic (e.g. KS101). These are used throughout the report.

A full list of the 35 Key Statistics data tables are available here:

<http://www.ons.gov.uk/ons/publications/re-reference-tables.html?edition=tcm%3A77-286262>

¹ Office for National Statistics (ONS), 2013.

Further results from the census will be released throughout 2013, for more information, please visit:

<http://www.lsr-online.org/census-2011.html>

More information on the 2011 Census can be found here:

<http://www.ons.gov.uk/ons/guide-method/census/2011/index.html>

DATA

Data has been compiled for Leicestershire Electoral Divisions, covering the key datasets from the 2011 Census Key statistics.

Figures for 2011 and 2001 are included, along with the overall and percentage change between the two censuses. Data for each indicator is presented in a table and chart.

Population data is displayed in a table, a population pyramid and a chart showing percentage change between 2001 and 2011. All other data is displayed in tables, and charts. Charts for change between 2001 and 2011 are coloured according to the degree of change between the two censuses; grey corresponds to smallest change and green the largest change. A marker indicates the average figure for all Leicestershire Electoral Divisions.

GEOGRAPHY

Maps for all County Council Electoral Divisions can be found here:

http://www.leics.gov.uk/index/your_council/local_democracy/conductofcouncillorsandemployees/electoraldivisionmapsindex/electoraldivisionmaps.htm

As Census data is not made available for Electoral Divisions, smaller areas, called Lower Super Output Areas (LSOAs) have been used as building blocks for the figures included in this report. LSOAs are small parcels of geography, containing a minimum of 1,000 people, a maximum of 3,000 and an average of 1,500. LSOAs were initially developed for the 2001 Census and are used to release a range of neighbourhood-level datasets from various sources. There are 396 LSOAs in Leicestershire.

In some instances, LSOAs do not fit neatly within Electoral Divisions and in these cases, population weighted centroids - representing the 'centre of gravity' for population within an area - have been used in order to assign each LSOA to an Electoral Division. Electoral Divisions that fall within this category are indicated with a (*).

More information on Lower Super Output Areas can be found here:

<http://www.ons.gov.uk/ons/guide-method/geography/beginner-s-guide/census/super-output-areas--soas-/index.html>

INDICATOR CHANGES 2001-11

The following questions were asked in slightly different ways in 2011 compared to 2001. As such, care should be taken when making comparison between years.

KS201EW : Ethnic Group

Asian/Asian British: Chinese
Mixed/multiple ethnic group: Other Mixed
Mixed/multiple ethnic group: White and Asian
Mixed/multiple ethnic group: White and Black African
Mixed/multiple ethnic group: White and Black Caribbean
Other ethnic group: Any other ethnic group
White: English/Welsh/Scottish/Northern Irish/British
White: Other White

KS301EW : Health and Provision of Unpaid Care

Day-to-day activities limited
Day-to-day activities limited: Age 16 to 64
Day-to-day activities not limited
Fair health
Very/ bad Health
Very/ good Health

KS601EW : Economic Activity

All usual residents aged 16 and over
Economically active: Employee: Full-time
Economically active: Employee: Part-time
Economically active: Full-time student

Economically active: Self-employed
Economically active: Unemployed
Economically inactive: Long-term sick or disabled
Economically inactive: Looking after home or family
Economically inactive: Other
Economically inactive: Retired
Economically inactive: Student (including full-time)
Long-term unemployed
Unemployed: Age 50 and over
Unemployed: Never worked

KS605EW : Industry

All usual residents aged 16 and over in employment
A Agriculture, forestry and fishing
B Mining and quarrying
C Manufacturing
D, F Electricity, gas, steam, air conditioning supply etc
F Construction
G Wholesale and retail trade; repair of motor vehicles etc
H, J Transport, storage, information and communication
I Accommodation and food service activities
K Financial and insurance activities
L,M,N Real estate activities Professional, scientific etc
O Public administration and defence etc
P Education
Q Human health and social work activities
R, S, T, U Other

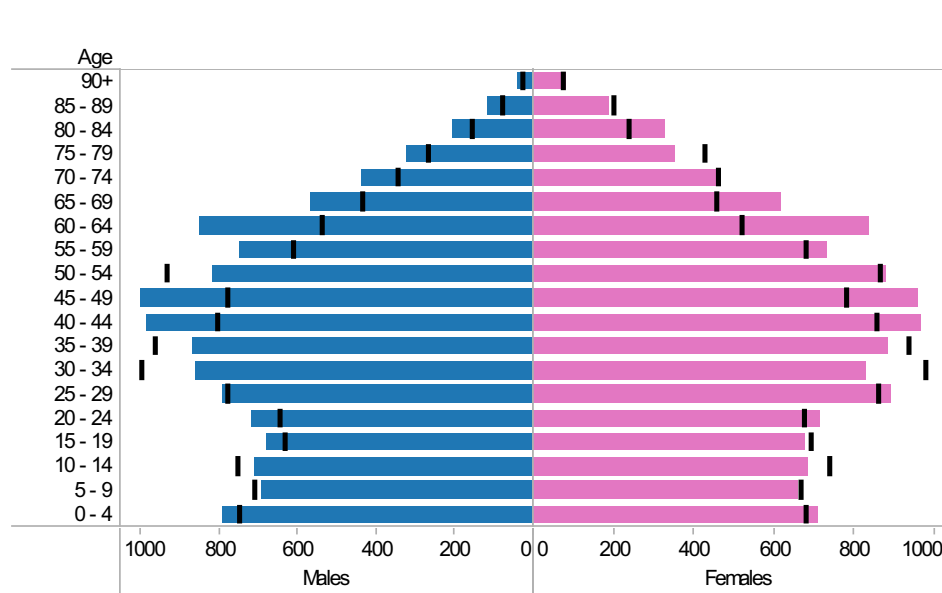
Hinckley ED: KS101EW : Usual Resident Population, KS102EW : Age Structure

■ Males
 ■ Females
 ■ Persons

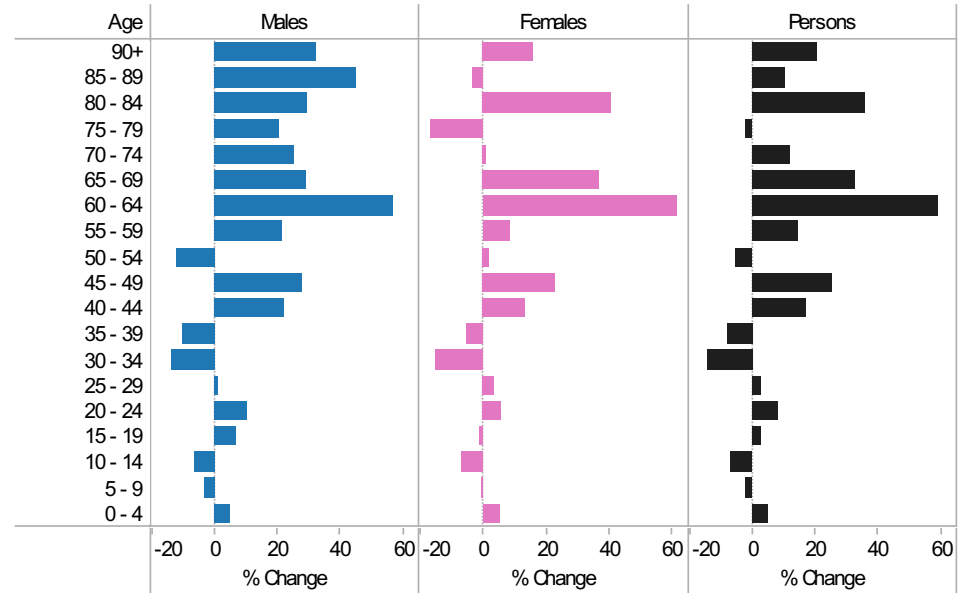
2001-11 Population by sex and quinary age band

Age	Males			Females			Persons		
	2001	2011	Change 2001-11	2001	2011	Change 2001-11	2001	2011	Change 2001-11
90+	28	37	9	70	81	11	98	118	20
85 - 89	80	116	36	197	190	-7	277	306	29
80 - 84	159	206	47	235	330	95	394	536	142
75 - 79	269	324	55	423	353	-70	692	677	-15
70 - 74	349	438	89	457	462	5	806	900	94
65 - 69	440	568	128	453	620	167	893	1,188	295
60 - 64	541	850	309	518	835	317	1,059	1,685	626
55 - 59	614	747	133	676	732	56	1,290	1,479	189
50 - 54	935	818	-117	863	879	16	1,798	1,697	-101
45 - 49	783	1,002	219	778	957	179	1,561	1,959	398
40 - 44	806	983	177	853	966	113	1,659	1,949	290
35 - 39	967	868	-99	934	884	-50	1,901	1,752	-149
30 - 34	999	860	-139	977	827	-150	1,976	1,687	-289
25 - 29	782	789	7	859	892	33	1,641	1,681	40
20 - 24	648	715	67	673	713	40	1,321	1,428	107
15 - 19	635	678	43	688	678	-10	1,323	1,356	33
10 - 14	757	707	-50	737	684	-53	1,494	1,391	-103
5 - 9	714	691	-23	664	659	-5	1,378	1,350	-28
0 - 4	753	789	36	677	712	35	1,430	1,501	71
All Ages	11,259	12,186	927	11,732	12,454	722	22,991	24,640	1,649

2011 (coloured bars) and 2001 (black marks) population by sex and quinary age

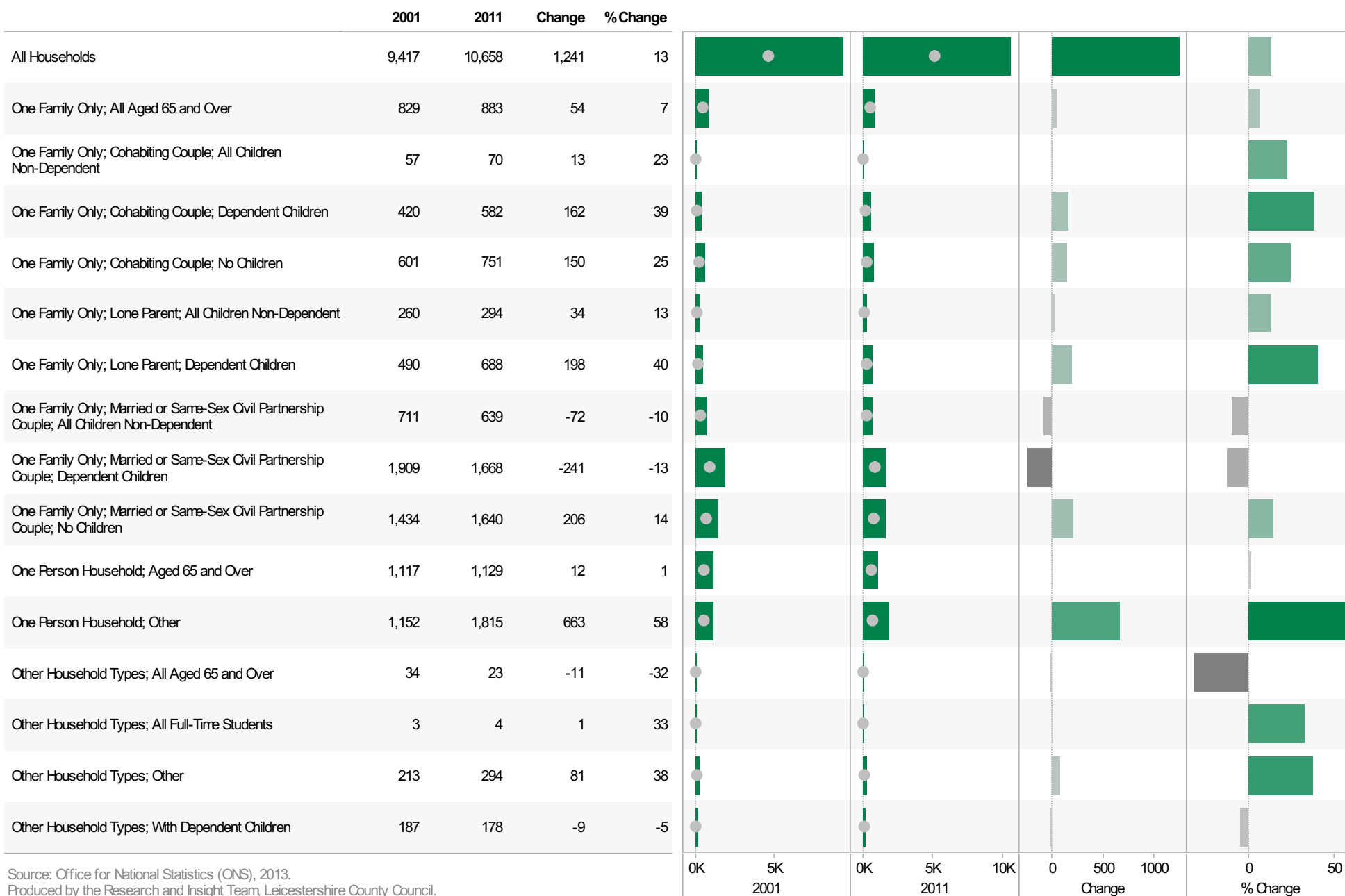


2001-11 Percentage change by sex and quinary age band



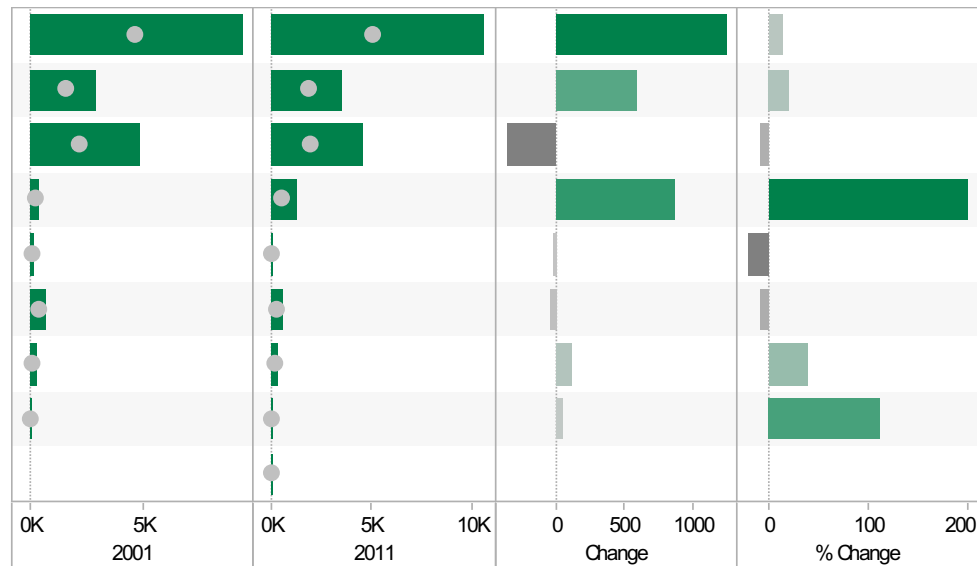
Hinckley ED KS105EW : Household Composition, 2001-11

Coloured bar - data for Electoral Division
Grey circle - average for all Leicestershire Electoral Divisions



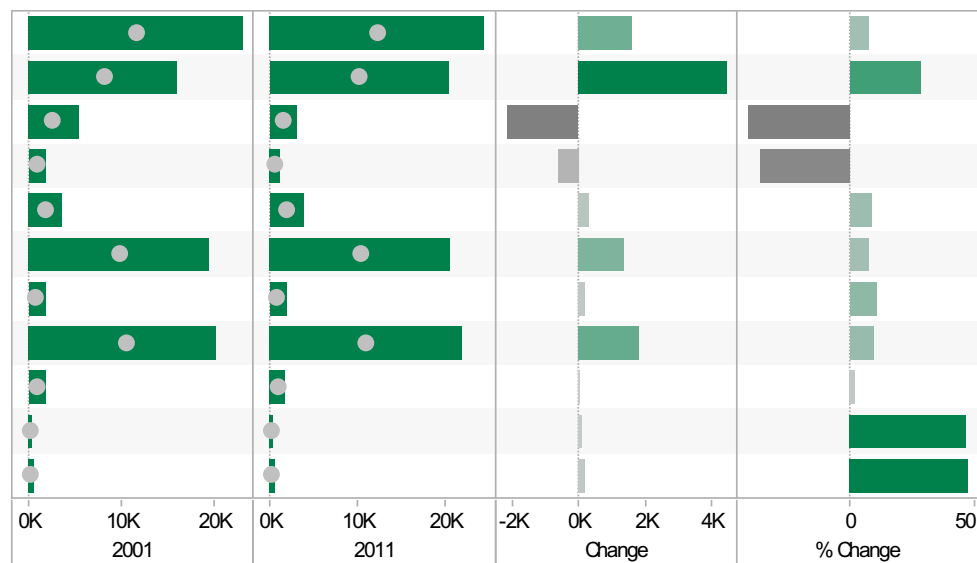
Hinckley ED KS402EW: Tenure, 2001-11

	2001	2011	Change	% Change
All Households	9,410	10,658	1,248	13
Owned; Owned Outright	2,932	3,532	600	20
Owned; Owned with a Mortgage or Loan	4,912	4,542	-370	-8
Private Rented; Private Landlord or Letting Agency	432	1,295	863	200
Private Rented; Other	147	116	-31	-21
Social Rented; Rented from Council (Local Authority)	659	606	-53	-8
Social Rented; Other	287	399	112	39
Shared Ownership (Part Owned and Part Rented)	41	87	46	112
Living Rent Free		81		



Hinckley ED KS301EW: Health and Provision of Unpaid Care, 2001-11

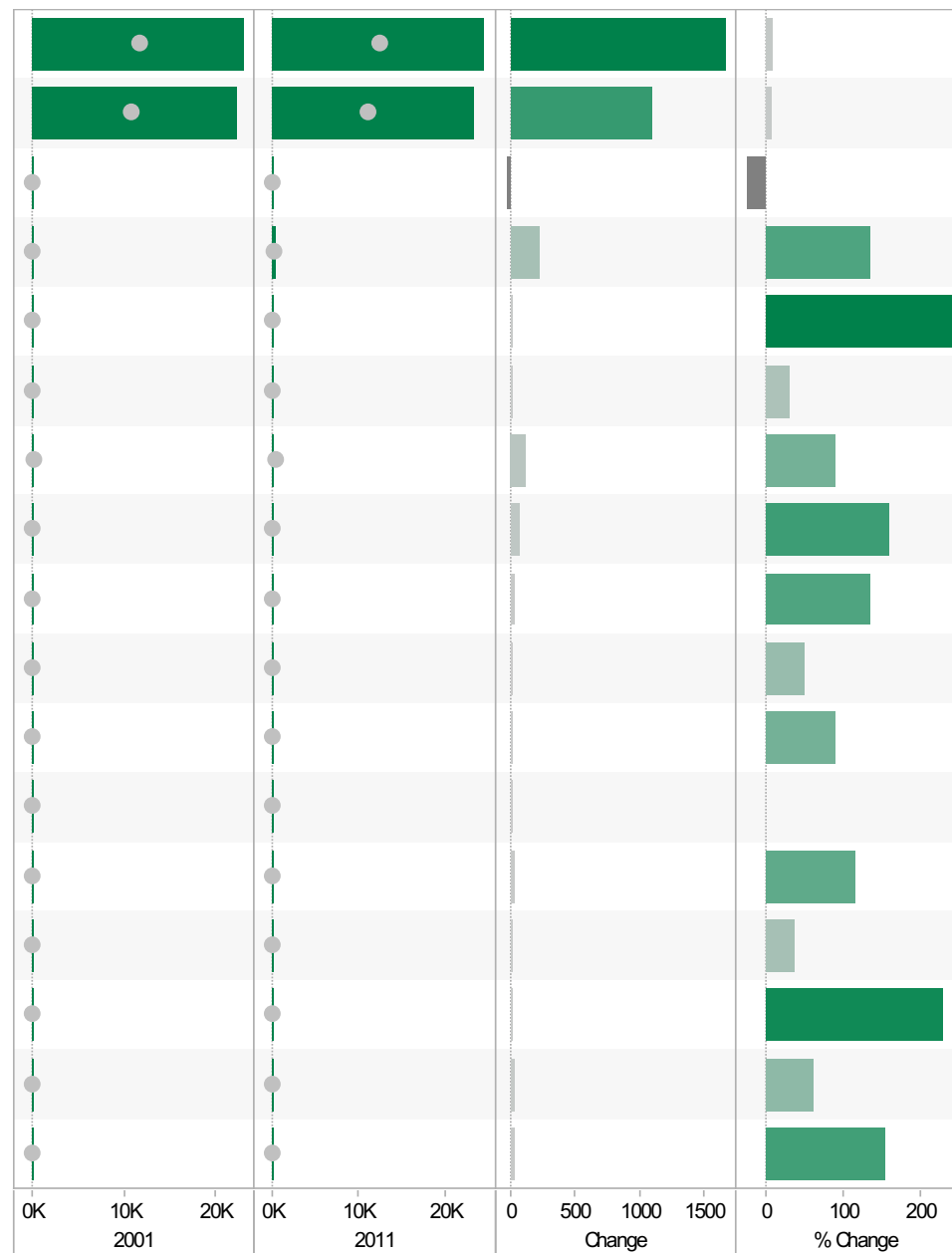
	2001	2011	Change	% Change
All usual residents	23,000	24,640	1,640	7
Very/ good Health	15,986	20,442	4,456	28
Fair health	5,308	3,109	-2,199	-41
Very/ bad Health	1,706	1,089	-617	-36
Day-to-day activities limited	3,578	3,871	293	8
Day-to-day activities not limited	19,422	20,769	1,347	7
Day-to-day activities limited a lot: Age 16 to 64	1,664	1,845	181	11
Provides no unpaid care	20,231	22,063	1,832	9
Provides 1 to 19 hours unpaid care a week	1,678	1,707	29	2
Provides 20 to 49 hours unpaid care a week	207	303	96	46
Provides 50 or more hours unpaid care a week	386	567	181	47



Hinckley ED KS201EW : Ethnic Group, 2001-11

Coloured bar - data for Electoral Division
Grey circle - average for all Leicestershire Electoral Divisions

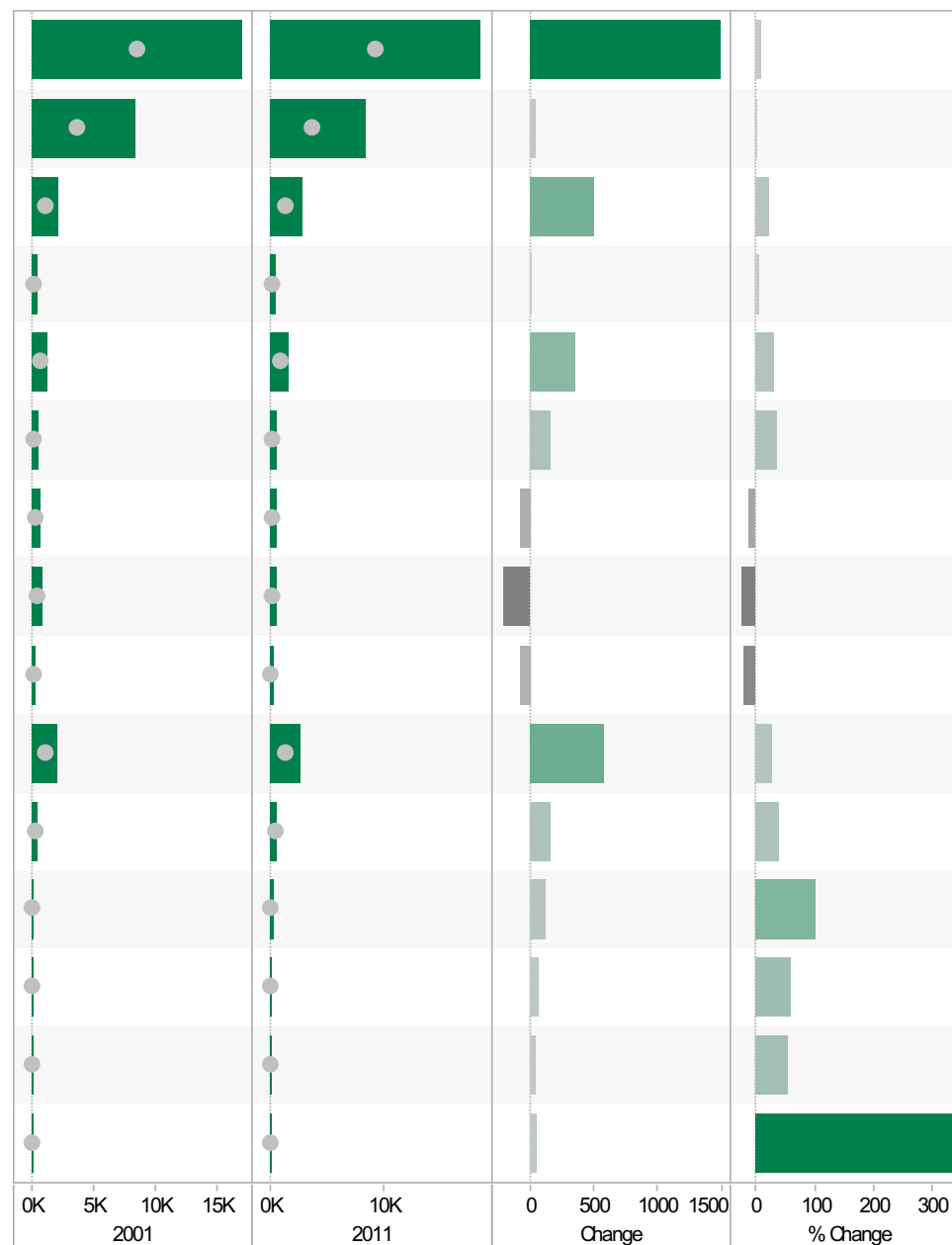
	2001	2011	Change	% Change
All usual residents	22,984	24,640	1,656	7
White: English/Welsh/Scottish/Northern Irish/British	22,276	23,362	1,086	5
White: Irish	119	88	-31	-26
White: Other White	170	398	228	134
Asian/Asian British: Bangladeshi	7	25	18	257
Asian/Asian British: Chinese	59	76	17	29
Asian/Asian British: Indian	126	238	112	89
Asian/Asian British: Other Asian	45	116	71	158
Asian/Asian British: Pakistani	18	42	24	133
Black/African/Caribbean/Black British: African	6	9	3	50
Black/African/Caribbean/Black British: Caribbean	9	17	8	89
Black/African/Caribbean/Black British: Other Black	0	5	5	
Mixed/multiple ethnic group: Other Mixed	22	47	25	114
Mixed/multiple ethnic group: White and Asian	50	68	18	36
Mixed/multiple ethnic group: White and Black African	7	23	16	229
Mixed/multiple ethnic group: White and Black Caribbean	55	88	33	60
Other ethnic group: Any other ethnic group	15	38	23	153



Hinckley ED KS601EW : Economic Activity, 2001-11

Coloured bar - data for Electoral Division
Grey circle - average for all Leicestershire Electoral Divisions

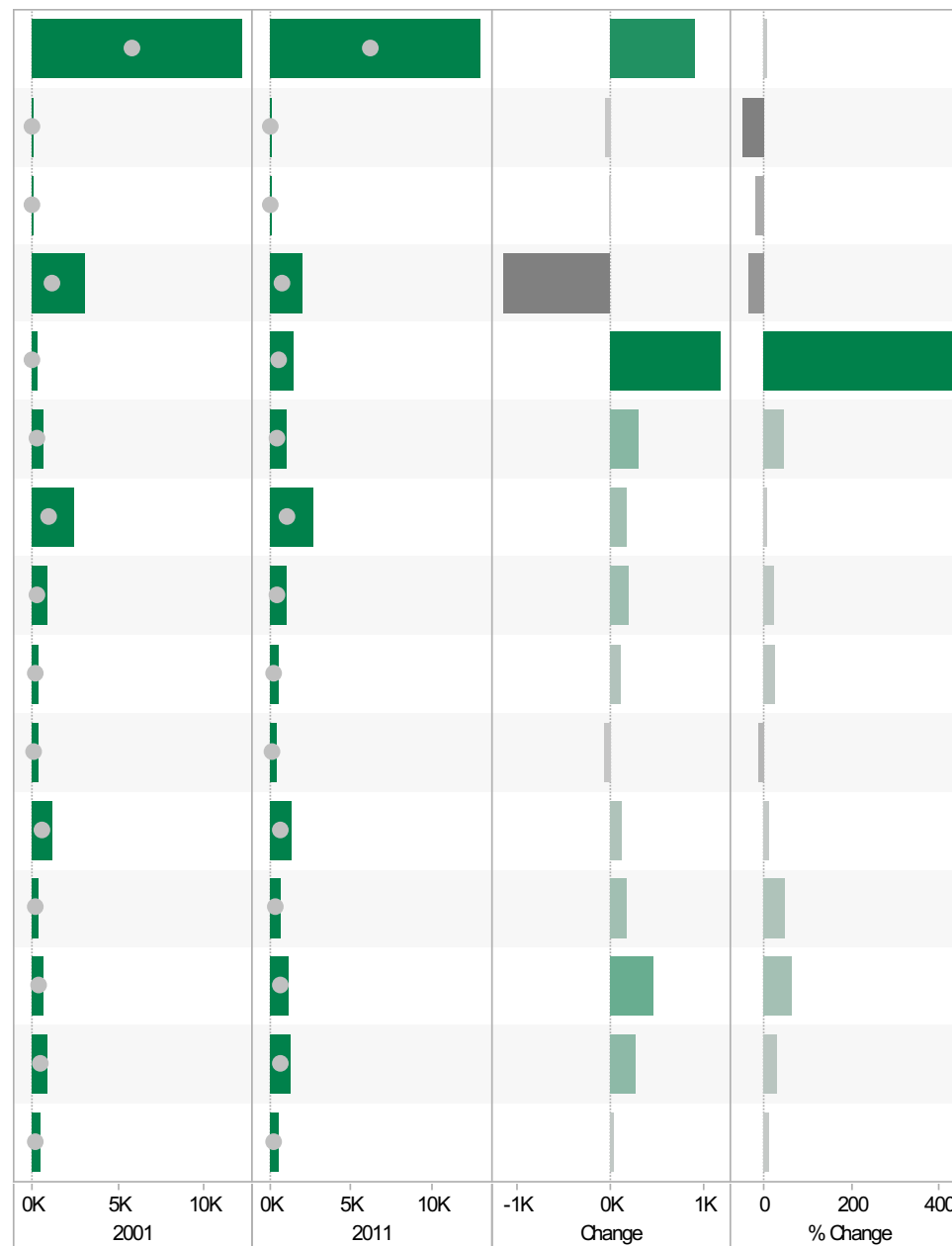
	2001	2011	Change	% Change
All usual residents aged 16 and over	16,991	18,475	1,484	9
Economically active: Employee: Full-time	8,362	8,408	46	1
Economically active: Employee: Part-time	2,234	2,740	506	23
Economically active: Full-time student	398	416	18	5
Economically active: Self-employed	1,202	1,564	362	30
Economically active: Unemployed	483	650	167	35
Economically inactive: Long-term sick or disabled	651	575	-76	-12
Economically inactive: Looking after home or family	834	624	-210	-25
Economically inactive: Other	312	244	-68	-22
Economically inactive: Retired	2,082	2,657	575	28
Economically inactive: Student (including full-time students)	433	597	164	38
Long-term unemployed	122	245	123	101
Unemployed: Age 16 to 24	125	198	73	58
Unemployed: Age 50 and over	95	145	50	53
Unemployed: Never worked	16	71	55	344



Hinckley ED
KS605EW : Industry, 2001-11

Coloured bar - data for Electoral Division
Grey circle - average for all Leicestershire Electoral Divisions

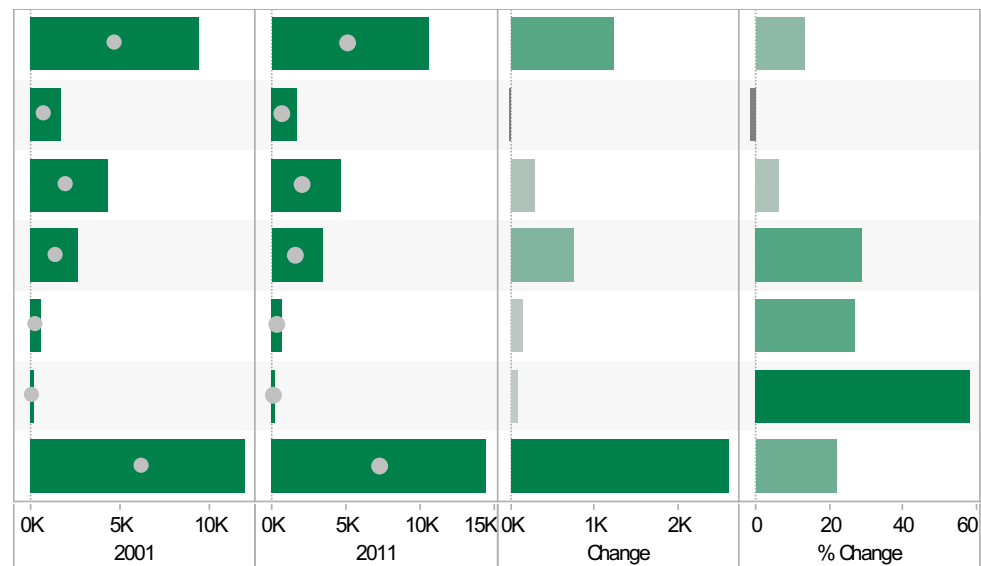
	2001	2011	Change	% Change
All usual residents aged 16 and over in employment	12,140	13,051	911	8
A Agriculture, forestry and fishing	79	37	-42	-53
B Mining and quarrying	18	14	-4	-22
C Manufacturing	3,132	1,988	-1,144	-37
D, F Electricity, gas, steam, air conditioning supply, water and sewerage	265	1,438	1,173	443
F Construction	700	1,007	307	44
G Wholesale and retail trade; repair of motor vehicles and motor cycles	2,466	2,651	185	8
H, J Transport, storage, information and communication	857	1,052	195	23
I Accommodation and food service activities	448	558	110	25
K Financial and insurance activities	449	385	-64	-14
L, M, N Real estate activities Professional, scientific and technical activities Administrative and support service activities	1,183	1,306	123	10
O Public administration and defence; compulsory social security	394	576	182	46
P Education	720	1,186	466	65
Q Human health and social work activities	935	1,211	276	30
R, S, T, U Other	494	538	44	9



Source: Office for National Statistics (ONS), 2013.
Produced by the Research and Insight Team, Leicestershire County Council.

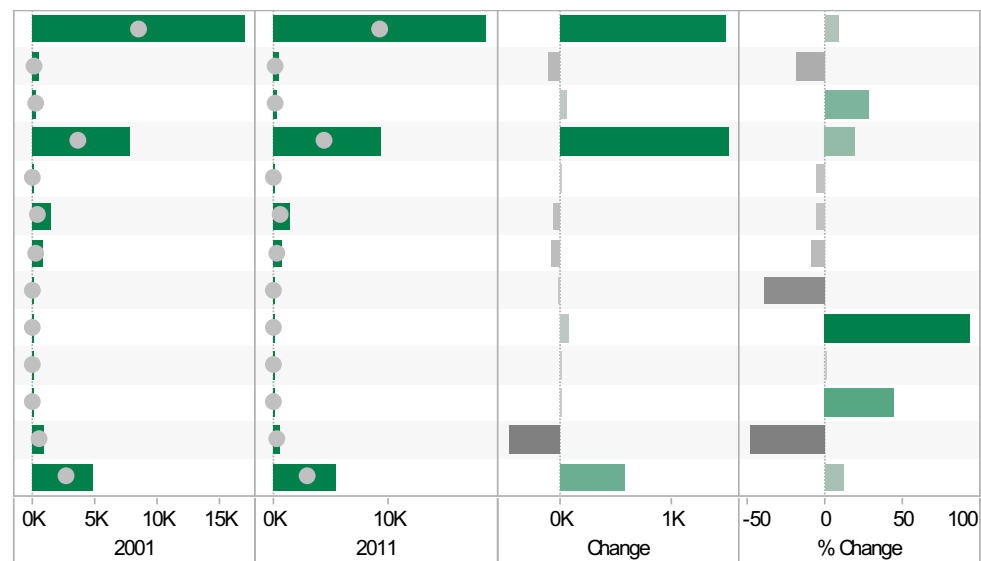
Hinckley ED KS404EW : Car and Van Availability, 2001-11

	2001	2011	Change	% Change
All Households	9,411	10,658	1,247	13
No Cars or Vans in Household	1,723	1,698	-25	-1
1 Car or Van in Household	4,348	4,628	280	6
2 Cars or Vans in Household	2,651	3,410	759	29
3 Cars or Vans in Household	535	679	144	27
4 or More Cars or Vans in Household	154	243	89	58
All Cars or Vans in the Area	11,929	14,534	2,605	22



Hinckley ED QS701EW : Method of Travel to Work, 2001-11

	2001	2011	Change	% Change
All Usual Residents Aged 16 to 74	17,000	18,475	1,475	9
Bicycle	569	463	-106	-19
Bus, Minibus or Coach	204	262	58	28
Driving a Car or Van	7,802	9,307	1,505	19
Motorcycle, Scooter or Moped	121	115	-6	-5
On Foot	1,466	1,396	-70	-5
Passenger in a Car or Van	842	766	-76	-9
Taxi	62	38	-24	-39
Train	71	137	66	93
Underground, Metro, Light Rail, Tram	9	9	0	0
Other Method of Travel to Work	38	55	17	45
Work Mainly at or From Home	971	503	-468	-48
Not in Employment	4,845	5,424	579	12



If you require information contained in this leaflet in another version e.g. large print, Braille, tape or alternative language please telephone: 0116 305 6803, Fax: 0116 305 7271 or Minicom: 0116 305 6160.

ਜੇ ਆਪ ਆ ਮਾਭਿਨੀ ਆਪਨੀ ਆਧਾਮਾਂ ਸਮਝਵਾਮਾਂ ਥੋੜੀ ਮਦਦ ਈਝਤਾਂ ਡੋ ਤੋ 0116 305 6803 ਨੰਬਰ ਪਰ ਝੋਨ ਕਰਥੋ ਅਨੇ ਅਮੇ ਆਪਨੇ ਮਦਦ ਕਰਵਾ ਅਵਥਾ ਕਰੀਥੁੰ.

ਜੇਕਰ ਤੁਹਾਨੂੰ ਇਸ ਜਾਣਕਾਰੀ ਨੂੰ ਸਮਝਣ ਵਿਚ ਕੁਝ ਮਦਦ ਚਾਹੀਦੀ ਹੈ ਤਾਂ ਕਿਰਪਾ ਕਰਕੇ 0116 305 6803 ਨੰਬਰ ਤੇ ਫੋਨ ਕਰੋ ਅਤੇ ਅਸੀਂ ਤੁਹਾਡੀ ਮਦਦ ਲਈ ਕਿਸੇ ਦਾ ਪ੍ਰਬੰਧ ਕਰ ਦਵਾਂਗੇ।

এই তথ্য নিজের ভাষায় বুঝার জন্য আপনার যদি কোন সাহায্যের প্রয়োজন হয়, তবে 0116 305 6803 এই নম্বরে ফোন করলে আমরা উপযুক্ত ব্যক্তির ব্যবস্থা করবো।

اگر آپ کو یہ معلومات سمجھنے میں کچھ مدد درکار ہے تو براہ مہربانی اس نمبر پر کال کریں اور ہم آپ کی مدد کے لئے کسی کا انتظام کر دیں گے۔ 0116 305 6803

假如閣下需要幫助，用你的語言去明白這些資訊，請致電 0116 305 6803，我們會安排有關人員為你提供幫助。

Jeżeli potrzebujesz pomocy w zrozumieniu tej informacji w Twoim języku, zadzwoń pod numer 0116 305 6803, a my Ci dopomożemy.

Research & Insight Team
Strategy, Partnerships & Communities
Chief Executive's Department
Leicestershire County Council
County Hall
Glenfield
Leicester
LE3 8RA

ri@leics.gov.uk
www.lsr-online.org