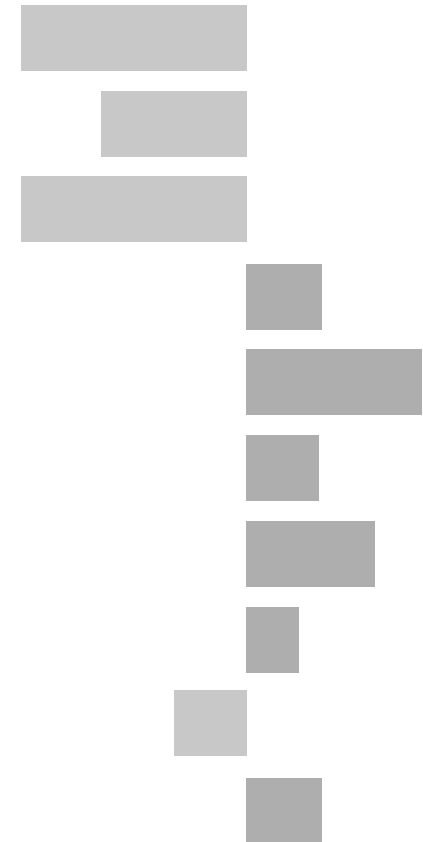


# Market Bosworth Division

## 2011 Census Key Statistics

Alex Lea  
May 2013

Research and Insight Team  
Leicestershire County Council



**Alex Lea**

Research & Insight Manager

Research & Insight Team  
Strategy, Partnerships & Communities  
Leicestershire County Council  
County Hall  
Glenfield  
Leicester LE3 8RB

Tel 0116 305 6803

Email [alex.lea@leics.gov.uk](mailto:alex.lea@leics.gov.uk)

Produced by the Research and Insight Team at Leicestershire County Council.

Whilst every effort has been made to ensure the accuracy of the information contained within this report, Leicestershire County Council cannot be held responsible for any errors or omission relating to the data contained within the report.

## CONTENTS

### Introduction

About this Report	4
2011 Census	4
Data	5
Census Geography	5
Indicator Changes 2001-11	6

### Population

KS101EW - Usual Resident Population	7
KS102EW - Age Structure	7

### Households

KS105EW - Household Composition	8
KS402EW - Tenure	9

### Health and Caring

KS301EW - Health and Provision of Unpaid Care	9
---	---

### Ethnicity

KS201EW - Ethnic Group	10
------------------------	----

### Economy

KS601EW - Economic Activity	11
KS605EW - Industry	12

### Transport

KS404EW - Car and Van Availability	13
QS701EW - Method of Travel to Work	13

## INTRODUCTION

### ABOUT THIS REPORT

This report provides a broad overview of the 2011 Census Key Statistics data, released by the Office for National Statistics on 30th January 2013, as part of the Second Release. This report summarises a selection of key headline datasets of this release for Leicestershire Electoral Divisions (EDs).

The Research and Insight Team at Leicestershire County Council has used data from the Second release to create an interactive Tableau dashboard containing 32 datasets covering the following geographies:

- England
- East Midlands
- East Midlands counties . Including Leicestershire
- Leicester City and Rutland Unitary Authorities
- Leicestershire districts

In addition, a headline report covers the results for Leicestershire and the seven districts that make up the county. The dashboard and report are available at the following links:

#### Census 2011 Key Statistics Dashboard

<http://public.tableausoftware.com/views/LAKeyStatsDashboard/Dashboard>

May 2013

#### Census 2011 Key Statistics Headline Report

[http://www.lsr-online.org/reports/census\\_2011\\_key\\_statistics\\_headline\\_report/download/1/Census%202011%20Second%20Release%20FINAL.pdf](http://www.lsr-online.org/reports/census_2011_key_statistics_headline_report/download/1/Census%202011%20Second%20Release%20FINAL.pdf)

### 2011 CENSUS

Census statistics help paint a picture of the nation and how we live. They provide a detailed snapshot of the population and its characteristics, and underpin funding allocation to provide public services.<sup>1</sup> Data from the 2011 Census is made available at a variety of different levels of geography and in various releases.

The Key Statistics data covers a broad range of socio-economic topics, including data on ethnicity, health and employment. Each Key Statistic dataset is referred to by its unique three-digit code with the 'KS' prefix to denote a Key statistic (e.g. KS101). These are used throughout the report.

A full list of the 35 Key Statistics data tables are available here:

<http://www.ons.gov.uk/ons/publications/re-reference-tables.html?edition=tcm%3A77-286262>

<sup>1</sup> Office for National Statistics (ONS), 2013.

Further results from the census will be released throughout 2013, for more information, please visit:

<http://www.lsr-online.org/census-2011.html>

More information on the 2011 Census can be found here:

<http://www.ons.gov.uk/ons/guide-method/census/2011/index.html>

## DATA

Data has been compiled for Leicestershire Electoral Divisions, covering the key datasets from the 2011 Census Key statistics.

Figures for 2011 and 2001 are included, along with the overall and percentage change between the two censuses. Data for each indicator is presented in a table and chart.

Population data is displayed in a table, a population pyramid and a chart showing percentage change between 2001 and 2011. All other data is displayed in tables, and charts. Charts for change between 2001 and 2011 are coloured according to the degree of change between the two censuses; grey corresponds to smallest change and green the largest change. A marker indicates the average figure for all Leicestershire Electoral Divisions.

## GEOGRAPHY

Maps for all County Council Electoral Divisions can be found here:

[http://www.leics.gov.uk/index/your\\_council/local\\_democracy/conductofcouncillorsandemployees/electoraldivisionmapsindex/electoraldivisionmaps.htm](http://www.leics.gov.uk/index/your_council/local_democracy/conductofcouncillorsandemployees/electoraldivisionmapsindex/electoraldivisionmaps.htm)

As Census data is not made available for Electoral Divisions, smaller areas, called Lower Super Output Areas (LSOAs) have been used as building blocks for the figures included in this report. LSOAs are small parcels of geography, containing a minimum of 1,000 people, a maximum of 3,000 and an average of 1,500. LSOAs were initially developed for the 2001 Census and are used to release a range of neighbourhood-level datasets from various sources. There are 396 LSOAs in Leicestershire.

In some instances, LSOAs do not fit neatly within Electoral Divisions and in these cases, population weighted centroids - representing the 'centre of gravity' for population within an area - have been used in order to assign each LSOA to an Electoral Division. Electoral Divisions that fall within this category are indicated with a (\*).

More information on Lower Super Output Areas can be found here:

<http://www.ons.gov.uk/ons/guide-method/geography/beginner-s-guide/census/super-output-areas--soas-/index.html>

## INDICATOR CHANGES 2001-11

The following questions were asked in slightly different ways in 2011 compared to 2001. As such, care should be taken when making comparison between years.

### **KS201EW : Ethnic Group**

Asian/Asian British: Chinese  
Mixed/multiple ethnic group: Other Mixed  
Mixed/multiple ethnic group: White and Asian  
Mixed/multiple ethnic group: White and Black African  
Mixed/multiple ethnic group: White and Black Caribbean  
Other ethnic group: Any other ethnic group  
White: English/Welsh/Scottish/Northern Irish/British  
White: Other White

### **KS301EW : Health and Provision of Unpaid Care**

Day-to-day activities limited  
Day-to-day activities limited: Age 16 to 64  
Day-to-day activities not limited  
Fair health  
Very/ bad Health  
Very/ good Health

### **KS601EW : Economic Activity**

All usual residents aged 16 and over  
Economically active: Employee: Full-time  
Economically active: Employee: Part-time  
Economically active: Full-time student

Economically active: Self-employed  
Economically active: Unemployed  
Economically inactive: Long-term sick or disabled  
Economically inactive: Looking after home or family  
Economically inactive: Other  
Economically inactive: Retired  
Economically inactive: Student (including full-time)  
Long-term unemployed  
Unemployed: Age 50 and over  
Unemployed: Never worked

### **KS605EW : Industry**

All usual residents aged 16 and over in employment  
A Agriculture, forestry and fishing  
B Mining and quarrying  
C Manufacturing  
D, F Electricity, gas, steam, air conditioning supply etc  
F Construction  
G Wholesale and retail trade; repair of motor vehicles etc  
H, J Transport, storage, information and communication  
I Accommodation and food service activities  
K Financial and insurance activities  
L,M,N Real estate activities Professional, scientific etc  
O Public administration and defence etc  
P Education  
Q Human health and social work activities  
R, S, T, U Other

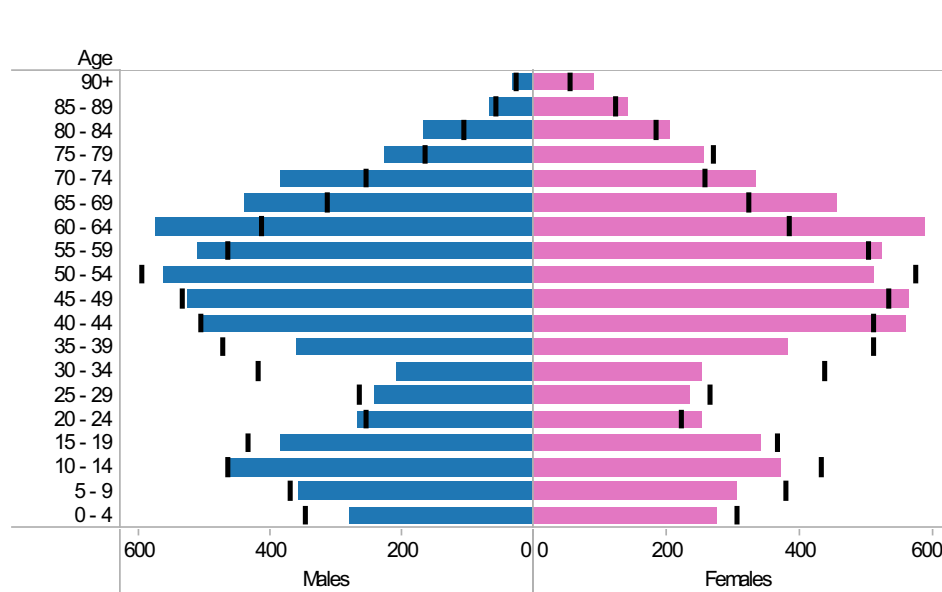
# Market Bosworth ED: KS101EW : Usual Resident Population, KS102EW : Age Structure

■ Males
 ■ Females
 ■ Persons

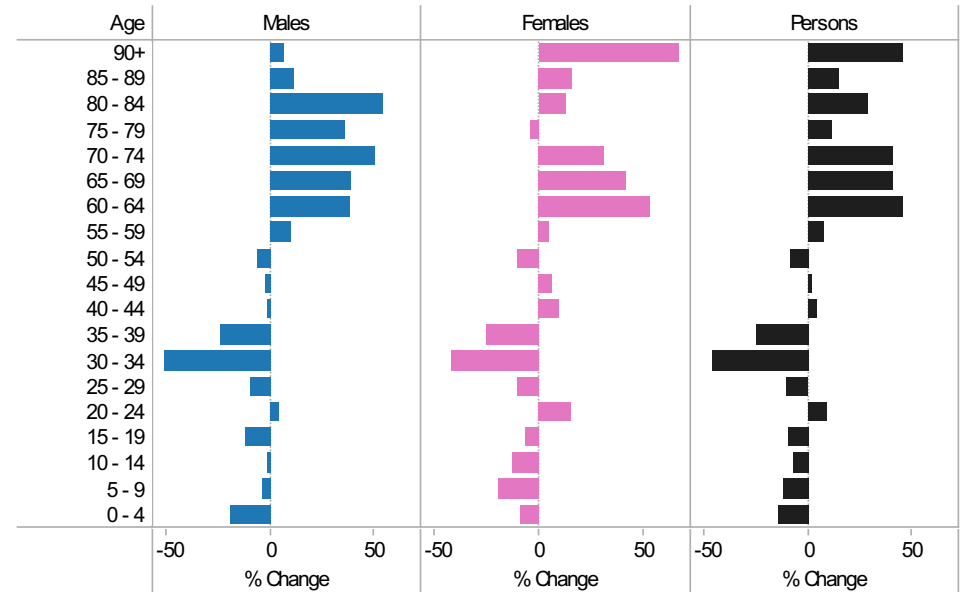
### 2001-11 Population by sex and quinary age band

Age	Males			Females			Persons		
	2001	2011	Change 2001-11	2001	2011	Change 2001-11	2001	2011	Change 2001-11
90+	29	31	2	54	90	36	83	121	38
85 - 89	60	67	7	122	142	20	182	209	27
80 - 84	108	167	59	181	204	23	289	371	82
75 - 79	167	227	60	267	256	-11	434	483	49
70 - 74	256	385	129	255	335	80	511	720	209
65 - 69	315	439	124	321	455	134	636	894	258
60 - 64	416	576	160	383	588	205	799	1,164	365
55 - 59	466	512	46	500	525	25	966	1,037	71
50 - 54	599	561	-38	572	510	-62	1,171	1,071	-100
45 - 49	537	525	-12	532	565	33	1,069	1,090	21
40 - 44	509	502	-7	509	558	49	1,018	1,060	42
35 - 39	474	359	-115	508	381	-127	982	740	-242
30 - 34	422	208	-214	434	253	-181	856	461	-395
25 - 29	268	242	-26	263	236	-27	531	478	-53
20 - 24	257	268	11	220	254	34	477	522	45
15 - 19	436	385	-51	364	341	-23	800	726	-74
10 - 14	467	461	-6	430	373	-57	897	834	-63
5 - 9	372	357	-15	378	305	-73	750	662	-88
0 - 4	349	281	-68	304	277	-27	653	558	-95
All Ages	6,507	6,553	46	6,597	6,648	51	13,104	13,201	97

### 2011 (coloured bars) and 2001 (black marks) population by sex and quinary age

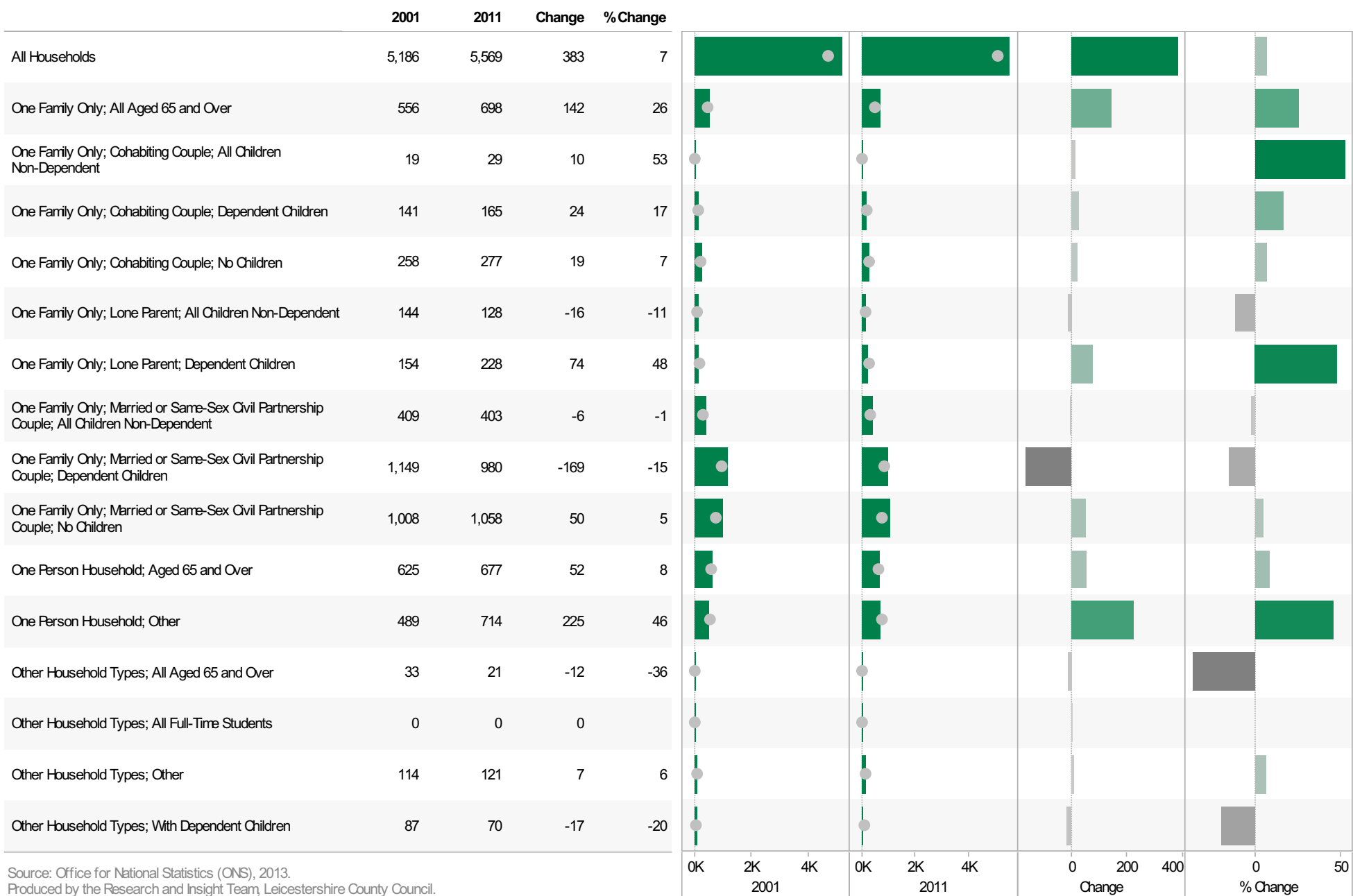


### 2001-11 Percentage change by sex and quinary age band



**Market Bosworth ED**  
**KS105EW : Household Composition, 2001-11**

**Coloured bar** - data for Electoral Division  
**Grey circle** - average for all Leicestershire Electoral Divisions

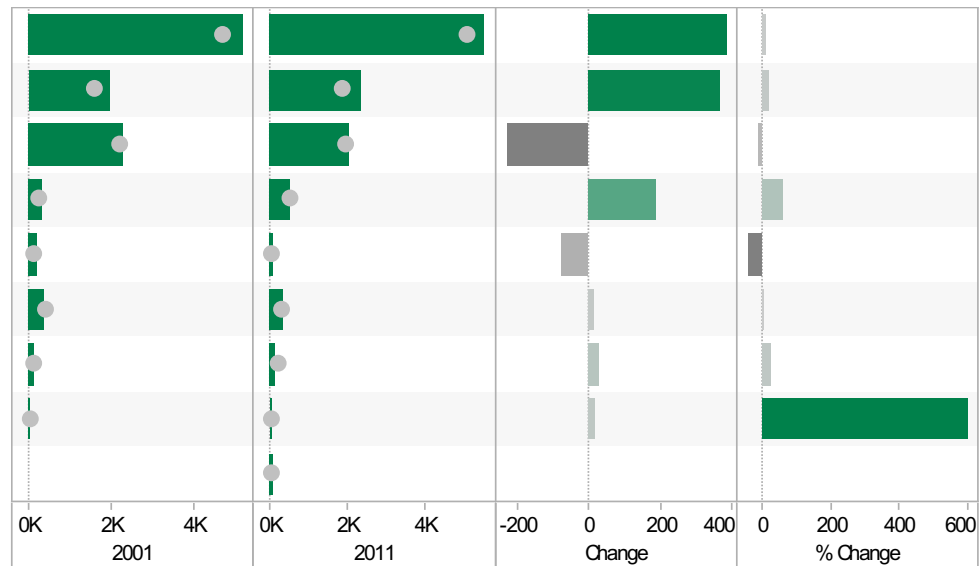


Source: Office for National Statistics (ONS), 2013.  
 Produced by the Research and Insight Team, Leicestershire County Council.



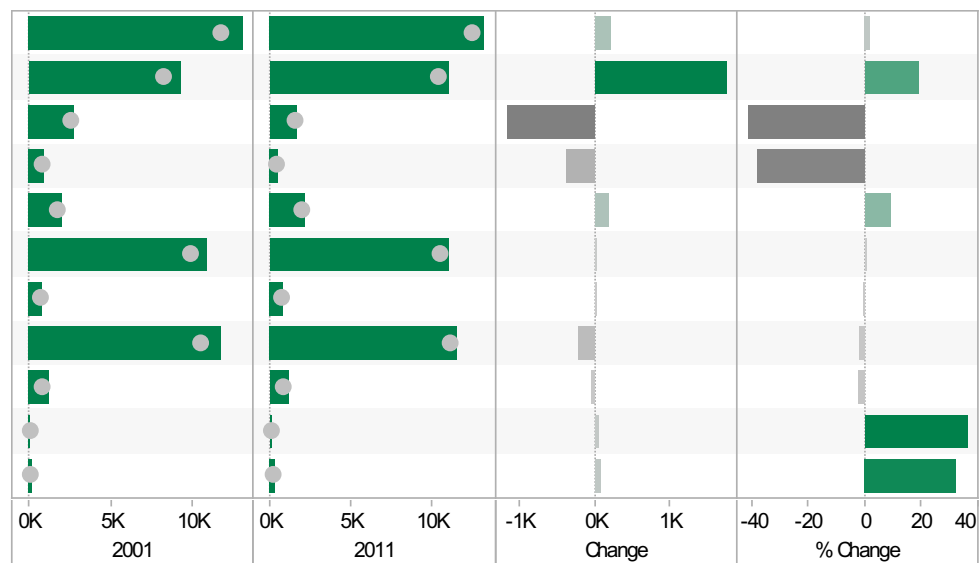
**Market Bosworth ED**  
**KS402EW: Tenure, 2001-11**

	2001	2011	Change	% Change
All Households	5,184	5,569	385	7
Owned; Owned Outright	1,971	2,339	368	19
Owned; Owned with a Mortgage or Loan	2,270	2,038	-232	-10
Private Rented; Private Landlord or Letting Agency	316	504	188	59
Private Rented; Other	179	101	-78	-44
Social Rented; Rented from Council (Local Authority)	336	347	11	3
Social Rented; Other	109	137	28	26
Shared Ownership (Part Owned and Part Rented)	3	21	18	600
Living Rent Free		82		



**Market Bosworth ED**  
**KS301EW: Health and Provision of Unpaid Care, 2001-11**

	2001	2011	Change	% Change
All usual residents	12,997	13,201	204	2
Very/ good Health	9,217	10,956	1,739	19
Fair health	2,820	1,653	-1,167	-41
Very/ bad Health	960	592	-368	-38
Day-to-day activities limited	2,074	2,261	187	9
Day-to-day activities not limited	10,923	10,940	17	0
Day-to-day activities limited a lot: Age 16 to 64	855	853	-2	0
Provides no unpaid care	11,760	11,544	-216	-2
Provides 1 to 19 hours unpaid care a week	1,194	1,165	-29	-2
Provides 20 to 49 hours unpaid care a week	130	177	47	36
Provides 50 or more hours unpaid care a week	238	315	77	32

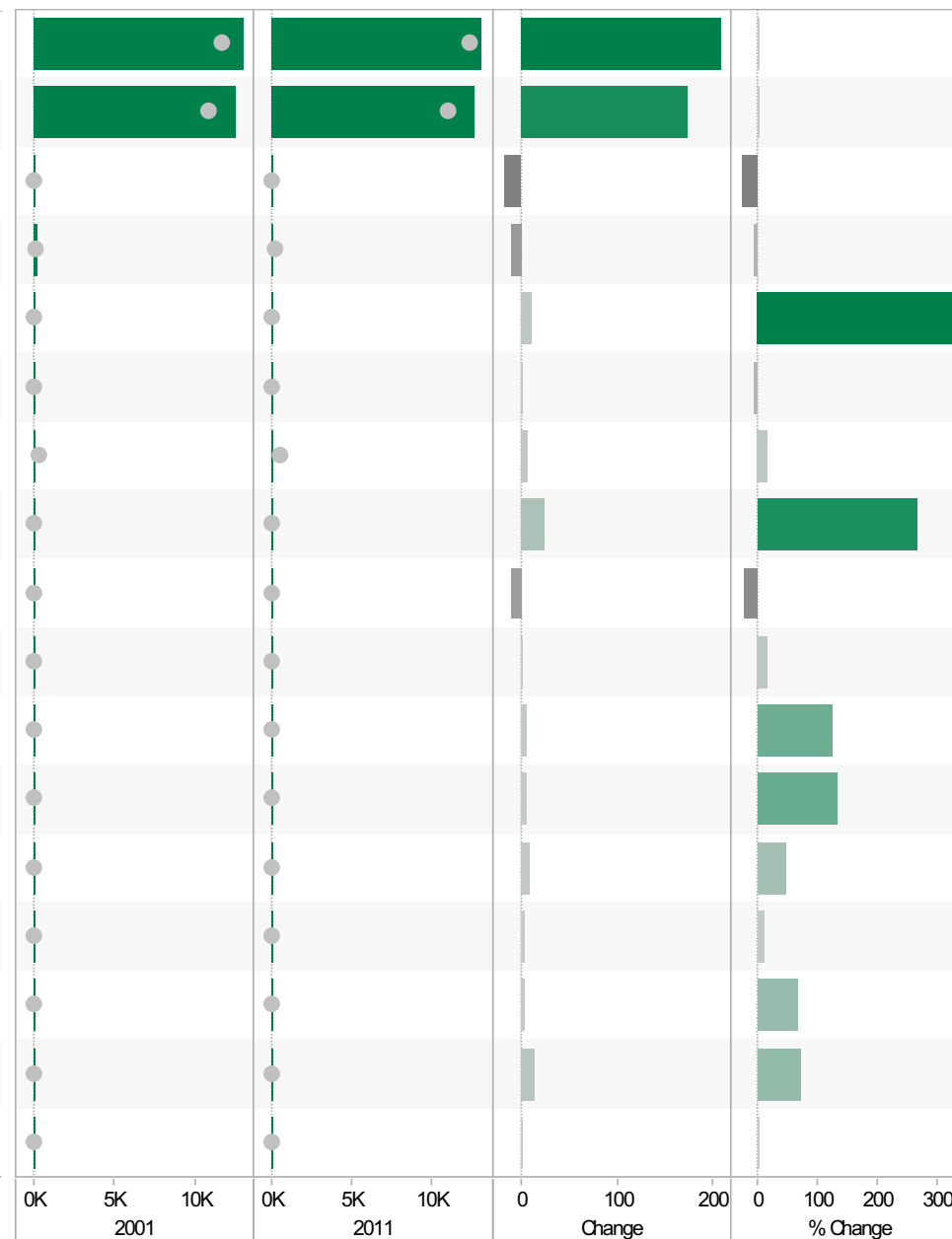


Source: Office for National Statistics (ONS), 2013.  
Produced by the Research and Insight Team, Leicestershire County Council.

**Market Bosworth ED**  
**KS201EW : Ethnic Group, 2001-11**

**Coloured bar** - data for Electoral Division  
**Grey circle** - average for all Leicestershire Electoral Divisions

	2001	2011	Change	% Change
All usual residents	12,994	13,201	207	2
White: English/Welsh/Scottish/Northern Irish/British	12,559	12,732	173	1
White: Irish	69	50	-19	-28
White: Other White	162	150	-12	-7
Asian/Asian British: Bangladeshi	3	13	10	333
Asian/Asian British: Chinese	14	13	-1	-7
Asian/Asian British: Indian	38	44	6	16
Asian/Asian British: Other Asian	9	33	24	267
Asian/Asian British: Pakistani	48	37	-11	-23
Black/African/Caribbean/Black British: African	7	8	1	14
Black/African/Caribbean/Black British: Caribbean	4	9	5	125
Black/African/Caribbean/Black British: Other Black	3	7	4	133
Mixed/multiple ethnic group: Other Mixed	17	25	8	47
Mixed/multiple ethnic group: White and Asian	27	30	3	11
Mixed/multiple ethnic group: White and Black African	3	5	2	67
Mixed/multiple ethnic group: White and Black Caribbean	20	34	14	70
Other ethnic group: Any other ethnic group	11	11	0	0

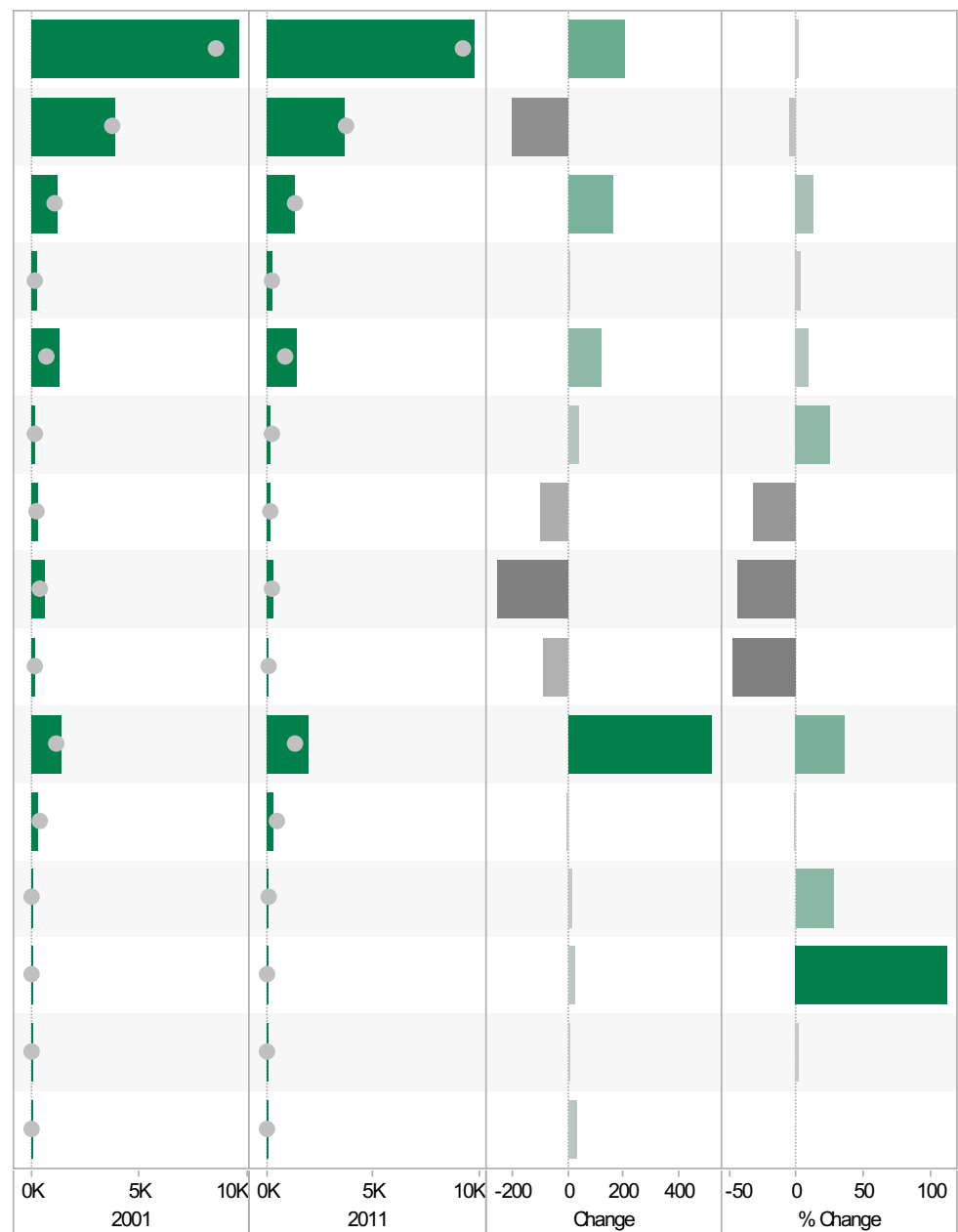


Source: Office for National Statistics (ONS), 2013.  
 Produced by the Research and Insight Team, Leicestershire County Council.

**Market Bosworth ED**  
**KS601EW : Economic Activity, 2001-11**

Coloured bar - data for Electoral Division  
 Grey circle - average for all Leicestershire Electoral Divisions

	2001	2011	Change	% Change
All usual residents aged 16 and over	9,586	9,788	202	2
Economically active: Employee: Full-time	3,892	3,693	-199	-5
Economically active: Employee: Part-time	1,202	1,367	165	14
Economically active: Full-time student	219	226	7	3
Economically active: Self-employed	1,292	1,413	121	9
Economically active: Unemployed	156	196	40	26
Economically inactive: Long-term sick or disabled	308	209	-99	-32
Economically inactive: Looking after home or family	590	333	-257	-44
Economically inactive: Other	185	97	-88	-48
Economically inactive: Retired	1,416	1,932	516	36
Economically inactive: Student (including full-time students)	326	322	-4	-1
Long-term unemployed	54	69	15	28
Unemployed: Age 16 to 24	25	53	28	112
Unemployed: Age 50 and over	56	57	1	2
Unemployed: Never worked	0	30	30	

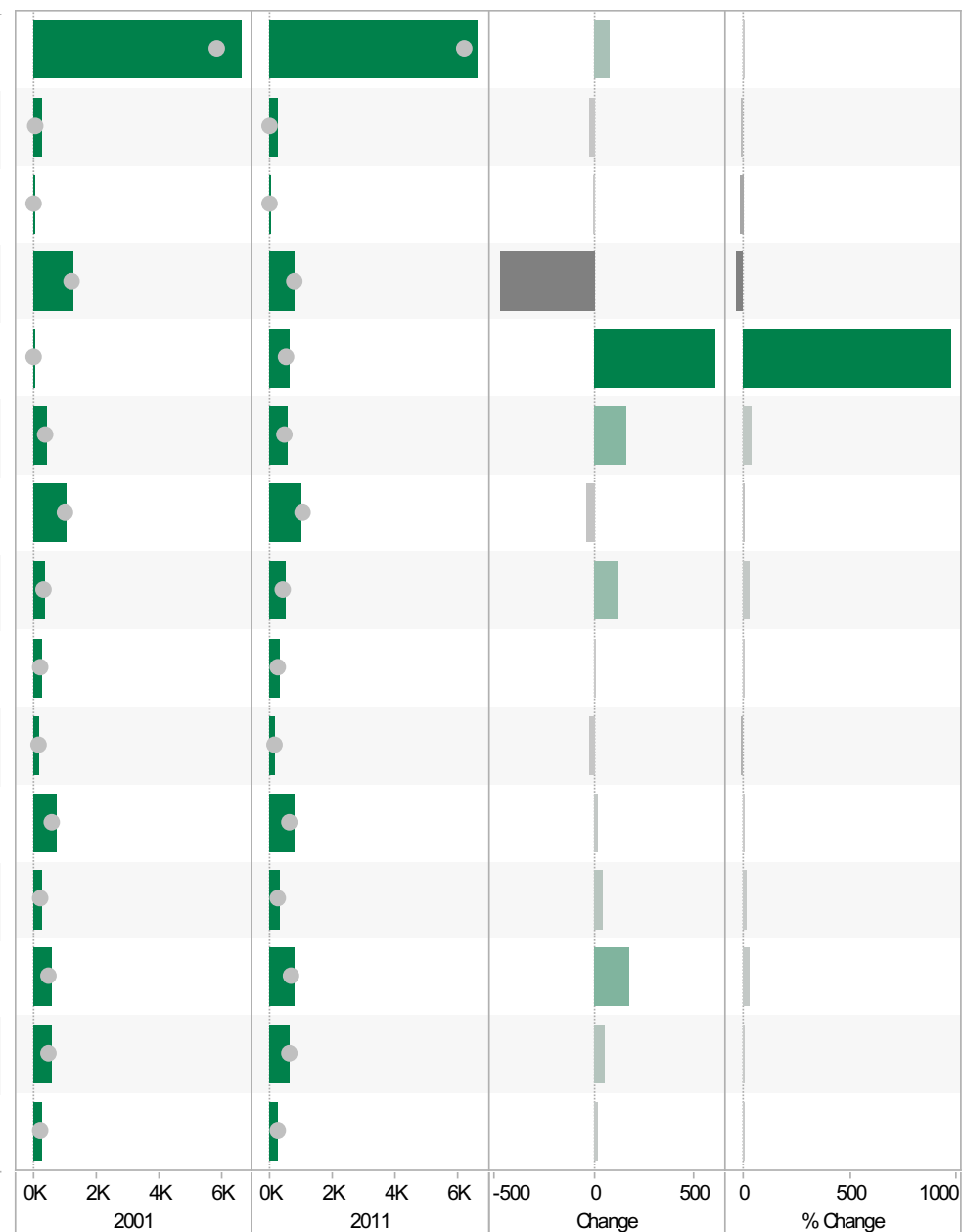


Source: Office for National Statistics (ONS), 2013.  
 Produced by the Research and Insight Team, Leicestershire County Council.

**Market Bosworth ED**  
**KS605EW : Industry, 2001-11**

**Coloured bar** - data for Electoral Division  
**Grey circle** - average for all Leicestershire Electoral Divisions

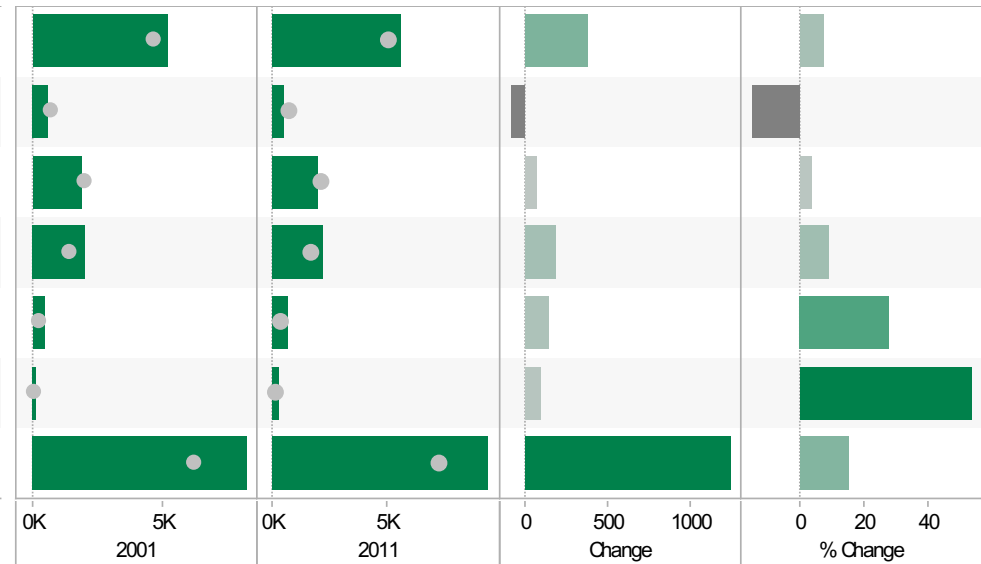
	2001	2011	Change	% Change
All usual residents aged 16 and over in employment	6,585	6,661	76	1
A Agriculture, forestry and fishing	286	267	-19	-7
B Mining and quarrying	29	24	-5	-17
C Manufacturing	1,299	826	-473	-36
D, F Electricity, gas, steam, air conditioning supply, water and sewerage	62	663	601	969
F Construction	426	586	160	38
G Wholesale and retail trade; repair of motor vehicles and motor cycles	1,049	1,012	-37	-4
H, J Transport, storage, information and communication	417	534	117	28
I Accommodation and food service activities	309	308	-1	0
K Financial and insurance activities	188	167	-21	-11
L, M, N Real estate activities Professional, scientific and technical activities Administrative and support service activities	774	792	18	2
O Public administration and defence; compulsory social security	268	311	43	16
P Education	619	796	177	29
Q Human health and social work activities	590	641	51	9
R, S, T, U Other	269	284	15	6



Source: Office for National Statistics (ONS), 2013.  
Produced by the Research and Insight Team, Leicestershire County Council.

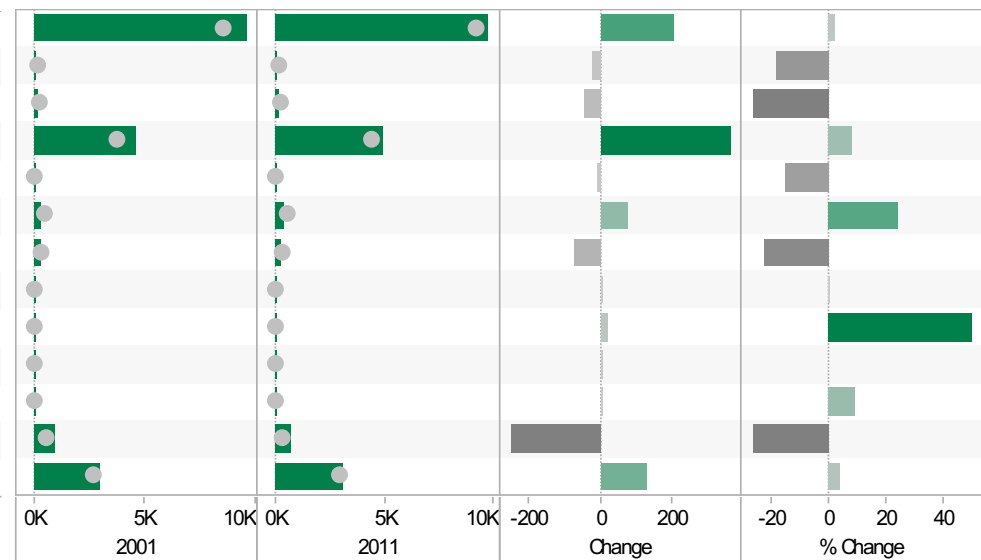
**Market Bosworth ED**  
**KS404EW : Car and Van Availability, 2001-11**

	2001	2011	Change	% Change
All Households	5,190	5,569	379	7
No Cars or Vans in Household	586	497	-89	-15
1 Car or Van in Household	1,890	1,954	64	3
2 Cars or Vans in Household	2,056	2,234	178	9
3 Cars or Vans in Household	490	626	136	28
4 or More Cars or Vans in Household	168	258	90	54
All Cars or Vans in the Area	8,227	9,462	1,235	15



**Market Bosworth ED**  
**QS701EW : Method of Travel to Work, 2001-11**

	2001	2011	Change	% Change
All Usual Residents Aged 16 to 74	9,582	9,788	206	2
Bicycle	109	89	-20	-18
Bus, Minibus or Coach	172	126	-46	-27
Driving a Car or Van	4,585	4,950	365	8
Motorcycle, Scooter or Moped	59	50	-9	-15
On Foot	332	412	80	24
Passenger in a Car or Van	314	242	-72	-23
Taxi	6	6	0	0
Train	44	66	22	50
Underground, Metro, Light Rail, Tram	0	7	7	
Other Method of Travel to Work	32	35	3	9
Work Mainly at or From Home	930	678	-252	-27
Not in Employment	2,999	3,127	128	4



Source: Office for National Statistics (ONS), 2013.  
Produced by the Research and Insight Team, Leicestershire County Council.

If you require information contained in this leaflet in another version e.g. large print, Braille, tape or alternative language please telephone: 0116 305 6803, Fax: 0116 305 7271 or Minicom: 0116 305 6160.

ਜੇ ਆਪ ਆ ਮਾਭਿਨੀ ਆਪਨੀ ਆਧਾਮਾਂ ਸਮਝਵਾਮਾਂ ਥੋੜੀ ਮਦਦ ਈਝਤਾਂ ਡੋ ਤੋ 0116 305 6803 ਨੰਬਰ ਪਰ ਫ਼ੋਨ ਕਰਥੋ ਅਨੇ ਅਮੇ ਆਪਨੇ ਮਦਦ ਕਰਵਾ ਆਵਥਾ ਕਰੀਥੁੰ.

ਜੇਕਰ ਤੁਹਾਨੂੰ ਇਸ ਜਾਣਕਾਰੀ ਨੂੰ ਸਮਝਣ ਵਿਚ ਕੁਝ ਮਦਦ ਚਾਹੀਦੀ ਹੈ ਤਾਂ ਕਿਰਪਾ ਕਰਕੇ 0116 305 6803 ਨੰਬਰ ਤੇ ਫ਼ੋਨ ਕਰੋ ਅਤੇ ਅਸੀਂ ਤੁਹਾਡੀ ਮਦਦ ਲਈ ਕਿਸੇ ਦਾ ਪ੍ਰਬੰਧ ਕਰ ਦਵਾਂਗੇ।

এই তথ্য নিজের ভাষায় বুঝার জন্য আপনার যদি কোন সাহায্যের প্রয়োজন হয়, তবে 0116 305 6803 এই নম্বরে ফোন করলে আমরা উপযুক্ত ব্যক্তির ব্যবস্থা করবো।

اگر آپ کو یہ معلومات سمجھنے میں کچھ مدد درکار ہے تو براہ مہربانی اس نمبر پر کال کریں اور ہم آپ کی مدد کے لئے کسی کا انتظام کر دیں گے۔ 0116 305 6803

假如閣下需要幫助，用你的語言去明白這些資訊，請致電 0116 305 6803，我們會安排有關人員為你提供幫助。

Jeżeli potrzebujesz pomocy w zrozumieniu tej informacji w Twoim języku, zadzwoń pod numer 0116 305 6803, a my Ci dopomożemy.

Research & Insight Team  
Strategy, Partnerships & Communities  
Chief Executive's Department  
Leicestershire County Council  
County Hall  
Glenfield  
Leicester  
LE3 8RA

[ri@leics.gov.uk](mailto:ri@leics.gov.uk)  
[www.lsr-online.org](http://www.lsr-online.org)