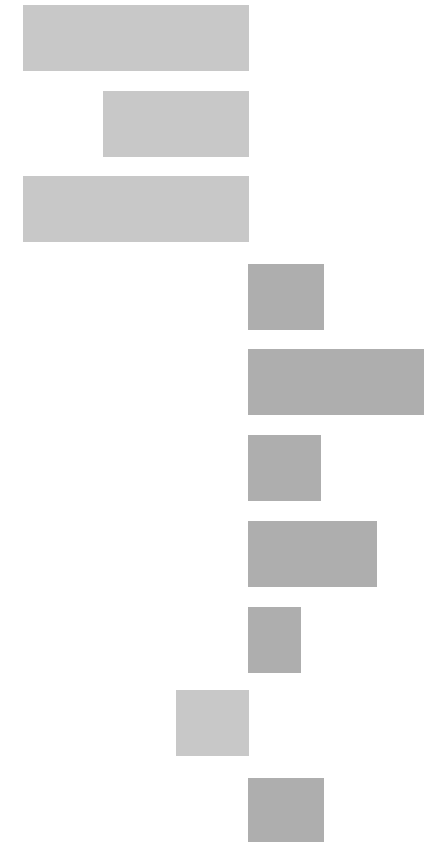


# Markfield, Desford and Thornton Electoral Division

## 2011 Census Key Statistics

Alex Lea  
May 2013

Research and Insight Team  
Leicestershire County Council



**Alex Lea**

Research & Insight Manager

Research & Insight Team  
Strategy, Partnerships & Communities  
Leicestershire County Council  
County Hall  
Glenfield  
Leicester LE3 8RB

Tel 0116 305 6803

Email [alex.lea@leics.gov.uk](mailto:alex.lea@leics.gov.uk)

Produced by the Research and Insight Team at Leicestershire County Council.

Whilst every effort has been made to ensure the accuracy of the information contained within this report, Leicestershire County Council cannot be held responsible for any errors or omission relating to the data contained within the report.

## CONTENTS

### Introduction

About this Report	4
2011 Census	4
Data	5
Census Geography	5
Indicator Changes 2001-11	6

### Population

KS101EW - Usual Resident Population	7
KS102EW - Age Structure	7

### Households

KS105EW - Household Composition	8
KS402EW - Tenure	9

### Health and Caring

KS301EW - Health and Provision of Unpaid Care	9
---	---

### Ethnicity

KS201EW - Ethnic Group	10
------------------------	----

### Economy

KS601EW - Economic Activity	11
KS605EW - Industry	12

### Transport

KS404EW - Car and Van Availability	13
QS701EW - Method of Travel to Work	13

## INTRODUCTION

### ABOUT THIS REPORT

This report provides a broad overview of the 2011 Census Key Statistics data, released by the Office for National Statistics on 30th January 2013, as part of the Second Release. This report summarises a selection of key headline datasets of this release for Leicestershire Electoral Divisions (EDs).

The Research and Insight Team at Leicestershire County Council has used data from the Second release to create an interactive Tableau dashboard containing 32 datasets covering the following geographies:

- England
- East Midlands
- East Midlands counties . Including Leicestershire
- Leicester City and Rutland Unitary Authorities
- Leicestershire districts

In addition, a headline report covers the results for Leicestershire and the seven districts that make up the county. The dashboard and report are available at the following links:

#### Census 2011 Key Statistics Dashboard

<http://public.tableausoftware.com/views/LAKeyStatsDashboard/Dashboard>

May 2013

#### Census 2011 Key Statistics Headline Report

[http://www.lsr-online.org/reports/census\\_2011\\_key\\_statistics\\_headline\\_report/download/1/Census%202011%20Second%20Release%20FINAL.pdf](http://www.lsr-online.org/reports/census_2011_key_statistics_headline_report/download/1/Census%202011%20Second%20Release%20FINAL.pdf)

### 2011 CENSUS

Census statistics help paint a picture of the nation and how we live. They provide a detailed snapshot of the population and its characteristics, and underpin funding allocation to provide public services.<sup>1</sup> Data from the 2011 Census is made available at a variety of different levels of geography and in various releases.

The Key Statistics data covers a broad range of socio-economic topics, including data on ethnicity, health and employment. Each Key Statistic dataset is referred to by its unique three-digit code with the 'KS' prefix to denote a Key statistic (e.g. KS101). These are used throughout the report.

A full list of the 35 Key Statistics data tables are available here:

<http://www.ons.gov.uk/ons/publications/re-reference-tables.html?edition=tcm%3A77-286262>

<sup>1</sup> Office for National Statistics (ONS), 2013.

Further results from the census will be released throughout 2013, for more information, please visit:

<http://www.lsr-online.org/census-2011.html>

More information on the 2011 Census can be found here:

<http://www.ons.gov.uk/ons/guide-method/census/2011/index.html>

## DATA

Data has been compiled for Leicestershire Electoral Divisions, covering the key datasets from the 2011 Census Key statistics.

Figures for 2011 and 2001 are included, along with the overall and percentage change between the two censuses. Data for each indicator is presented in a table and chart.

Population data is displayed in a table, a population pyramid and a chart showing percentage change between 2001 and 2011. All other data is displayed in tables, and charts. Charts for change between 2001 and 2011 are coloured according to the degree of change between the two censuses; grey corresponds to smallest change and green the largest change. A marker indicates the average figure for all Leicestershire Electoral Divisions.

## GEOGRAPHY

Maps for all County Council Electoral Divisions can be found here:

[http://www.leics.gov.uk/index/your\\_council/local\\_democracy/conductofcouncillorsandemployees/electoraldivisionmapsindex/electoraldivisionmaps.htm](http://www.leics.gov.uk/index/your_council/local_democracy/conductofcouncillorsandemployees/electoraldivisionmapsindex/electoraldivisionmaps.htm)

As Census data is not made available for Electoral Divisions, smaller areas, called Lower Super Output Areas (LSOAs) have been used as building blocks for the figures included in this report. LSOAs are small parcels of geography, containing a minimum of 1,000 people, a maximum of 3,000 and an average of 1,500. LSOAs were initially developed for the 2001 Census and are used to release a range of neighbourhood-level datasets from various sources. There are 396 LSOAs in Leicestershire.

In some instances, LSOAs do not fit neatly within Electoral Divisions and in these cases, population weighted centroids - representing the 'centre of gravity' for population within an area - have been used in order to assign each LSOA to an Electoral Division. Electoral Divisions that fall within this category are indicated with a (\*).

More information on Lower Super Output Areas can be found here:

<http://www.ons.gov.uk/ons/guide-method/geography/beginner-s-guide/census/super-output-areas--soas-/index.html>

## INDICATOR CHANGES 2001-11

The following questions were asked in slightly different ways in 2011 compared to 2001. As such, care should be taken when making comparison between years.

### **KS201EW : Ethnic Group**

Asian/Asian British: Chinese  
Mixed/multiple ethnic group: Other Mixed  
Mixed/multiple ethnic group: White and Asian  
Mixed/multiple ethnic group: White and Black African  
Mixed/multiple ethnic group: White and Black Caribbean  
Other ethnic group: Any other ethnic group  
White: English/Welsh/Scottish/Northern Irish/British  
White: Other White

### **KS301EW : Health and Provision of Unpaid Care**

Day-to-day activities limited  
Day-to-day activities limited: Age 16 to 64  
Day-to-day activities not limited  
Fair health  
Very/ bad Health  
Very/ good Health

### **KS601EW : Economic Activity**

All usual residents aged 16 and over  
Economically active: Employee: Full-time  
Economically active: Employee: Part-time  
Economically active: Full-time student

Economically active: Self-employed  
Economically active: Unemployed  
Economically inactive: Long-term sick or disabled  
Economically inactive: Looking after home or family  
Economically inactive: Other  
Economically inactive: Retired  
Economically inactive: Student (including full-time)  
Long-term unemployed  
Unemployed: Age 50 and over  
Unemployed: Never worked

### **KS605EW : Industry**

All usual residents aged 16 and over in employment  
A Agriculture, forestry and fishing  
B Mining and quarrying  
C Manufacturing  
D, F Electricity, gas, steam, air conditioning supply etc  
F Construction  
G Wholesale and retail trade; repair of motor vehicles etc  
H, J Transport, storage, information and communication  
I Accommodation and food service activities  
K Financial and insurance activities  
L,M,N Real estate activities Professional, scientific etc  
O Public administration and defence etc  
P Education  
Q Human health and social work activities  
R, S, T, U Other

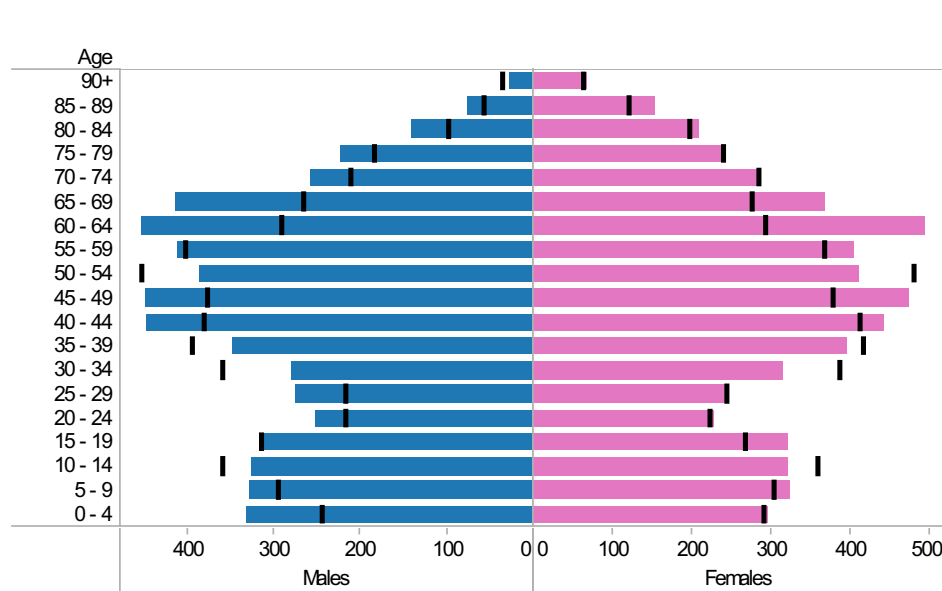
# Markfield, Desford and Thornton\* ED: KS101EW : Usual Resident Population, KS102EW : Age Structure

■ Males
 ■ Females
 ■ Persons

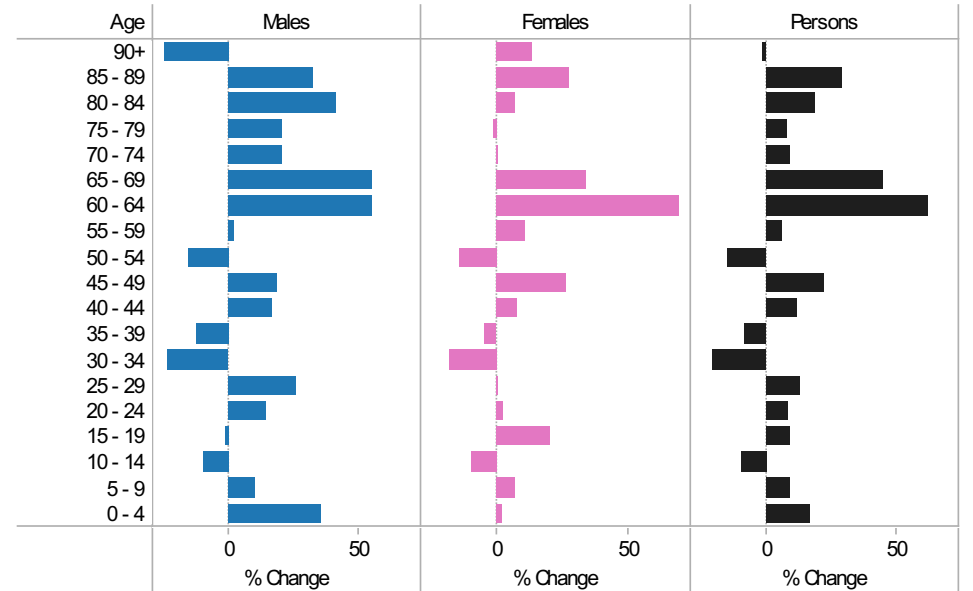
2001-11 Population by sex and quinary age band

Age	Males			Females			Persons		
	2001	2011	Change 2001-11	2001	2011	Change 2001-11	2001	2011	Change 2001-11
90+	37	28	-9	61	69	8	98	97	-1
85 - 89	58	77	19	120	153	33	178	230	52
80 - 84	99	140	41	195	209	14	294	349	55
75 - 79	185	223	38	239	235	-4	424	458	34
70 - 74	213	258	45	282	282	0	495	540	45
65 - 69	267	414	147	274	368	94	541	782	241
60 - 64	292	453	161	292	494	202	584	947	363
55 - 59	403	411	8	365	404	39	768	815	47
50 - 54	455	386	-69	479	410	-69	934	796	-138
45 - 49	378	449	71	377	475	98	755	924	169
40 - 44	382	446	64	411	442	31	793	888	95
35 - 39	396	348	-48	414	396	-18	810	744	-66
30 - 34	361	278	-83	384	314	-70	745	592	-153
25 - 29	218	275	57	242	244	2	460	519	59
20 - 24	219	251	32	221	227	6	440	478	38
15 - 19	316	313	-3	266	321	55	582	634	52
10 - 14	360	326	-34	357	322	-35	717	648	-69
5 - 9	296	327	31	302	324	22	598	651	53
0 - 4	245	332	87	290	295	5	535	627	92
All Ages	5,180	5,735	555	5,571	5,984	413	10,751	11,719	968

2011 (coloured bars) and 2001 (black marks) population by sex and quinary age



2001-11 Percentage change by sex and quinary age band



**Markfield, Desford and Thornton\* ED**  
**KS105EW : Household Composition, 2001-11**

**Coloured bar** - data for Electoral Division  
**Grey circle** - average for all Leicestershire Electoral Divisions

	2001	2011	Change	% Change
All Households	4,407	4,984	577	13
One Family Only; All Aged 65 and Over	536	560	24	4
One Family Only; Cohabiting Couple; All Children Non-Dependent	23	29	6	26
One Family Only; Cohabiting Couple; Dependent Children	120	166	46	38
One Family Only; Cohabiting Couple; No Children	214	290	76	36
One Family Only; Lone Parent; All Children Non-Dependent	109	136	27	25
One Family Only; Lone Parent; Dependent Children	144	254	110	76
One Family Only; Married or Same-Sex Civil Partnership Couple; All Children Non-Dependent	370	311	-59	-16
One Family Only; Married or Same-Sex Civil Partnership Couple; Dependent Children	845	828	-17	-2
One Family Only; Married or Same-Sex Civil Partnership Couple; No Children	792	841	49	6
One Person Household; Aged 65 and Over	667	721	54	8
One Person Household; Other	414	646	232	56
Other Household Types; All Aged 65 and Over	20	13	-7	-35
Other Household Types; All Full-Time Students	3	2	-1	-33
Other Household Types; Other	80	106	26	33
Other Household Types; With Dependent Children	70	81	11	16

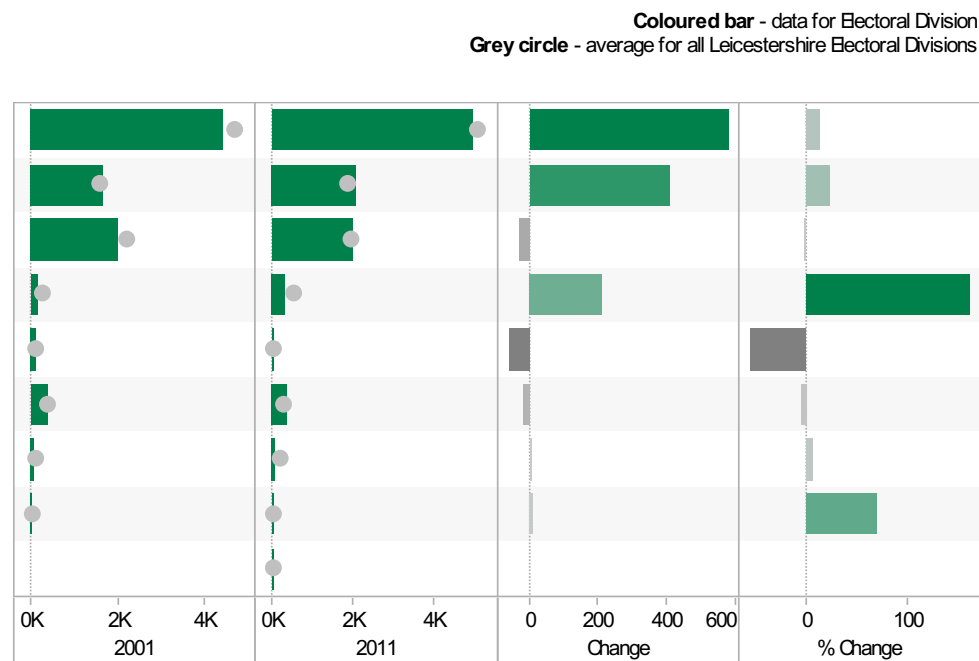


Source: Office for National Statistics (ONS), 2013.  
 Produced by the Research and Insight Team, Leicestershire County Council.



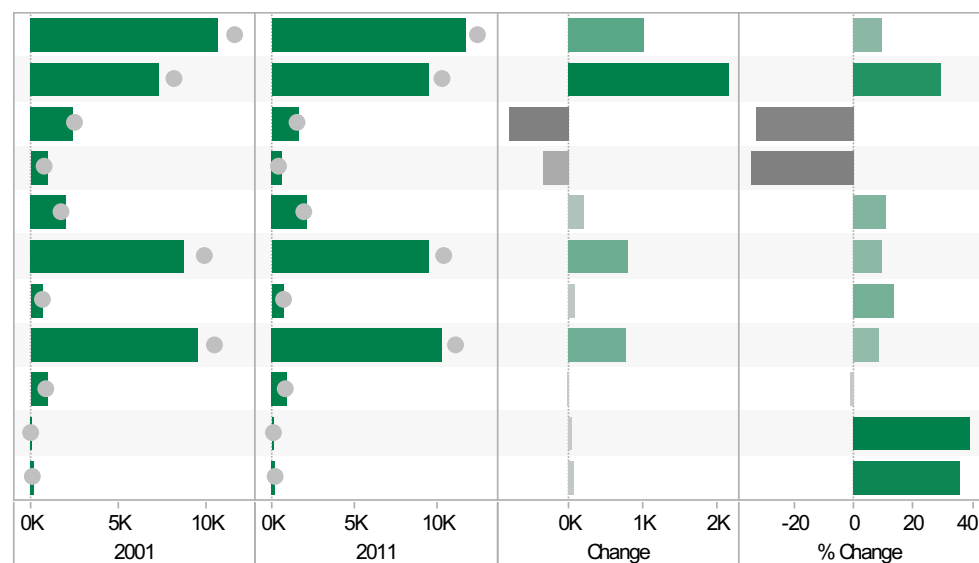
### Markfield, Desford and Thornton\* ED KS402EW: Tenure, 2001-11

	2001	2011	Change	% Change
All Households	4,405	4,984	579	13
Owned; Owned Outright	1,672	2,080	408	24
Owned; Owned with a Mortgage or Loan	2,018	1,993	-25	-1
Private Rented; Private Landlord or Letting Agency	133	347	214	161
Private Rented; Other	107	48	-59	-55
Social Rented; Rented from Council (Local Authority)	376	358	-18	-5
Social Rented; Other	82	88	6	7
Shared Ownership (Part Owned and Part Rented)	17	29	12	71
Living Rent Free		41		



### Markfield, Desford and Thornton\* ED KS301EW: Health and Provision of Unpaid Care, 2001-11

	2001	2011	Change	% Change
All usual residents	10,692	11,719	1,027	10
Very/ good Health	7,334	9,479	2,145	29
Fair health	2,417	1,626	-791	-33
Very/ bad Health	941	614	-327	-35
Day-to-day activities limited	1,986	2,203	217	11
Day-to-day activities not limited	8,706	9,516	810	9
Day-to-day activities limited a lot: Age 16 to 64	713	810	97	14
Provides no unpaid care	9,497	10,276	779	8
Provides 1 to 19 hours unpaid care a week	1,007	996	-11	-1
Provides 20 to 49 hours unpaid care a week	119	165	46	39
Provides 50 or more hours unpaid care a week	208	282	74	36



Source: Office for National Statistics (ONS), 2013.  
Produced by the Research and Insight Team, Leicestershire County Council.

**Markfield, Desford and Thornton\* ED**  
**KS201EW : Ethnic Group, 2001-11**

**Coloured bar** - data for Electoral Division  
**Grey circle** - average for all Leicestershire Electoral Divisions

	2001	2011	Change	% Change
All usual residents	10,687	11,719	1,032	10
White: English/Welsh/Scottish/Northern Irish/British	10,255	11,076	821	8
White: Irish	77	69	-8	-10
White: Other White	141	117	-24	-17
Asian/Asian British: Bangladeshi	3	12	9	300
Asian/Asian British: Chinese	21	24	3	14
Asian/Asian British: Indian	95	208	113	119
Asian/Asian British: Other Asian	7	28	21	300
Asian/Asian British: Pakistani	11	5	-6	-55
Black/African/Caribbean/Black British: African	3	16	13	433
Black/African/Caribbean/Black British: Caribbean	6	16	10	167
Black/African/Caribbean/Black British: Other Black	0	2	2	
Mixed/multiple ethnic group: Other Mixed	12	21	9	75
Mixed/multiple ethnic group: White and Asian	23	49	26	113
Mixed/multiple ethnic group: White and Black African	7	7	0	0
Mixed/multiple ethnic group: White and Black Caribbean	17	36	19	112
Other ethnic group: Any other ethnic group	9	33	24	267

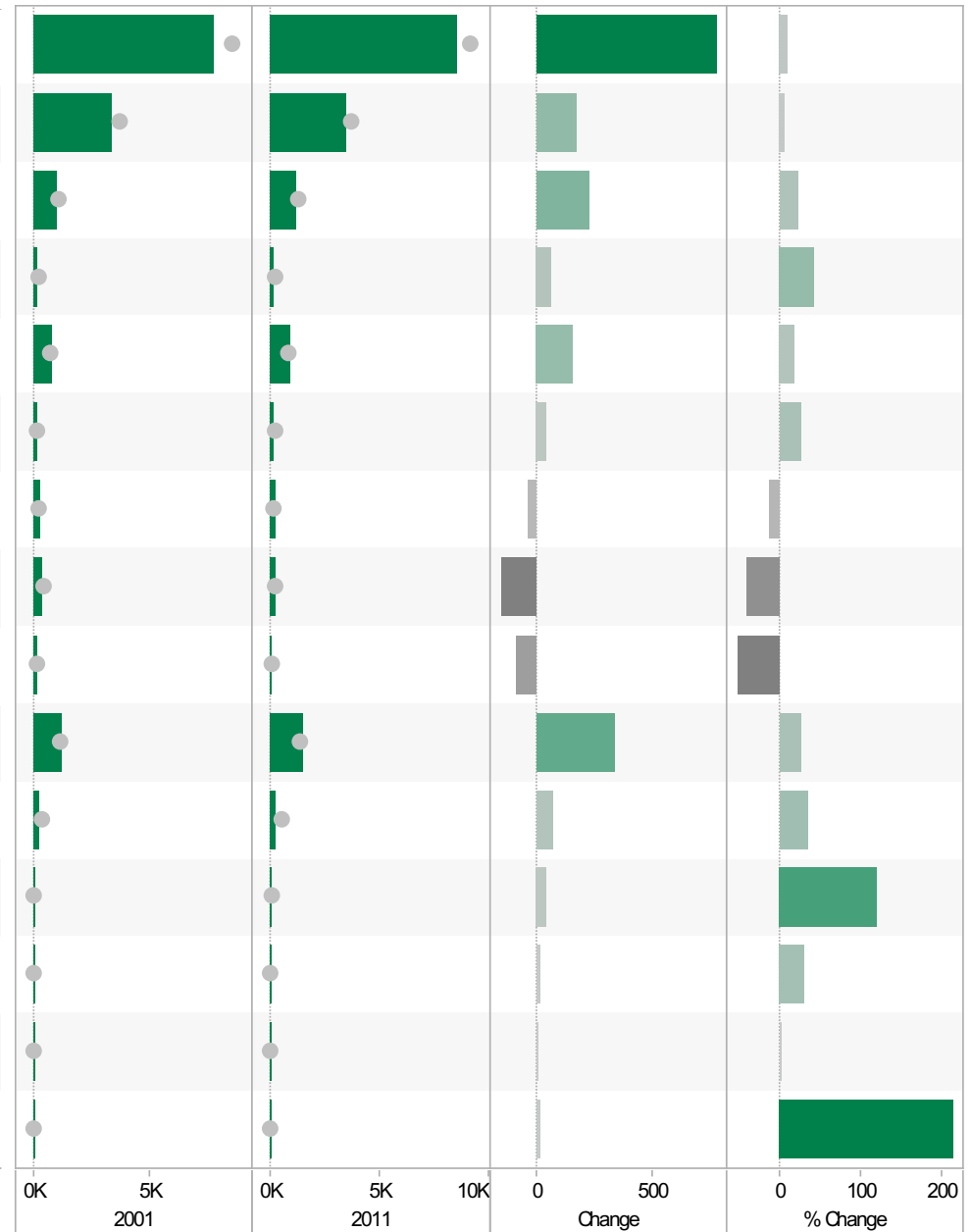


Source: Office for National Statistics (ONS), 2013.  
 Produced by the Research and Insight Team, Leicestershire County Council.

**Markfield, Desford and Thornton\* ED  
KS601EW : Economic Activity, 2001-11**

**Coloured bar** - data for Electoral Division  
**Grey circle** - average for all Leicestershire Electoral Divisions

	2001	2011	Change	% Change
All usual residents aged 16 and over	7,742	8,514	772	10
Economically active: Employee: Full-time	3,339	3,505	166	5
Economically active: Employee: Part-time	1,027	1,255	228	22
Economically active: Full-time student	151	216	65	43
Economically active: Self-employed	798	951	153	19
Economically active: Unemployed	152	192	40	26
Economically inactive: Long-term sick or disabled	273	236	-37	-14
Economically inactive: Looking after home or family	384	228	-156	-41
Economically inactive: Other	171	81	-90	-53
Economically inactive: Retired	1,236	1,567	331	27
Economically inactive: Student (including full-time students)	211	283	72	34
Long-term unemployed	33	73	40	121
Unemployed: Age 16 to 24	39	51	12	31
Unemployed: Age 50 and over	39	40	1	3
Unemployed: Never worked	7	22	15	214

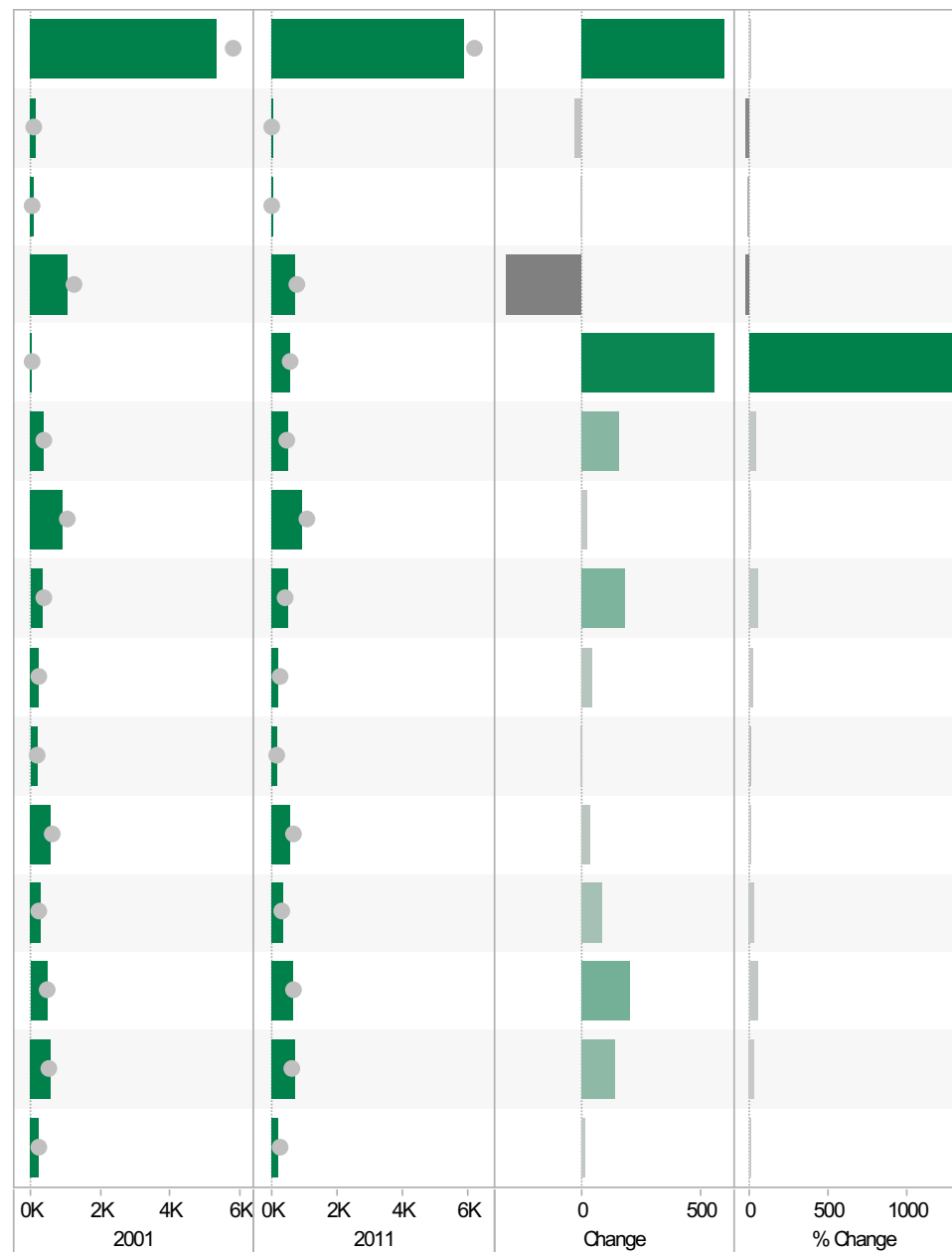


Source: Office for National Statistics (ONS), 2013.  
Produced by the Research and Insight Team, Leicestershire County Council.

**Markfield, Desford and Thornton\* ED**  
**KS605EW : Industry, 2001-11**

**Coloured bar** - data for Electoral Division  
**Grey circle** - average for all Leicestershire Electoral Divisions

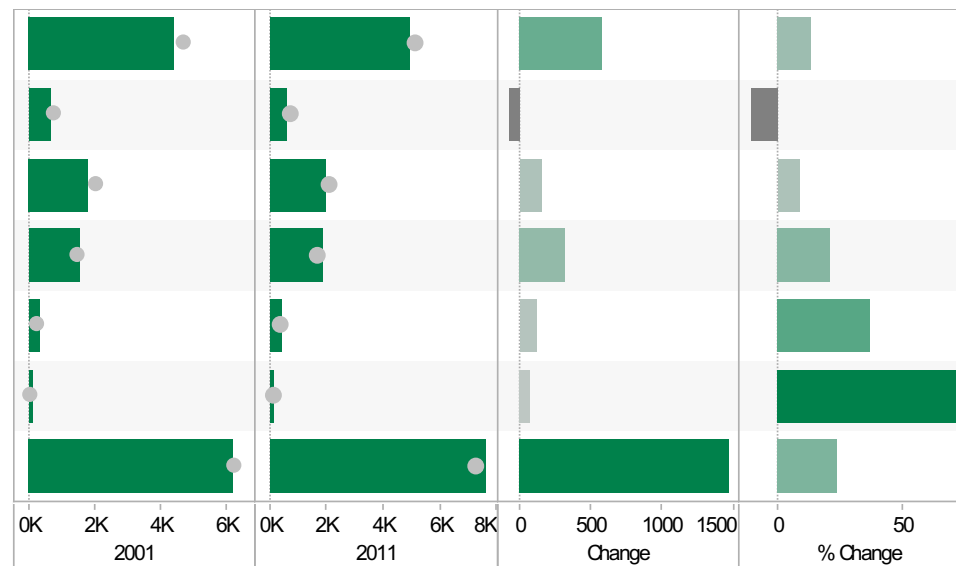
	2001	2011	Change	% Change
All usual residents aged 16 and over in employment	5,301	5,900	599	11
A Agriculture, forestry and fishing	101	73	-28	-28
B Mining and quarrying	51	46	-5	-10
C Manufacturing	1,030	709	-321	-31
D, F Electricity, gas, steam, air conditioning supply, water and sewerage	41	598	557	1,359
F Construction	372	530	158	42
G Wholesale and retail trade; repair of motor vehicles and motor cycles	904	925	21	2
H, J Transport, storage, information and communication	339	522	183	54
I Accommodation and food service activities	196	239	43	22
K Financial and insurance activities	185	176	-9	-5
L, M, N Real estate activities Professional, scientific and technical activities Administrative and support service activities	564	603	39	7
O Public administration and defence; compulsory social security	265	350	85	32
P Education	468	677	209	45
Q Human health and social work activities	571	710	139	24
R, S, T, U Other	214	231	17	8



Source: Office for National Statistics (ONS), 2013.  
 Produced by the Research and Insight Team, Leicestershire County Council.

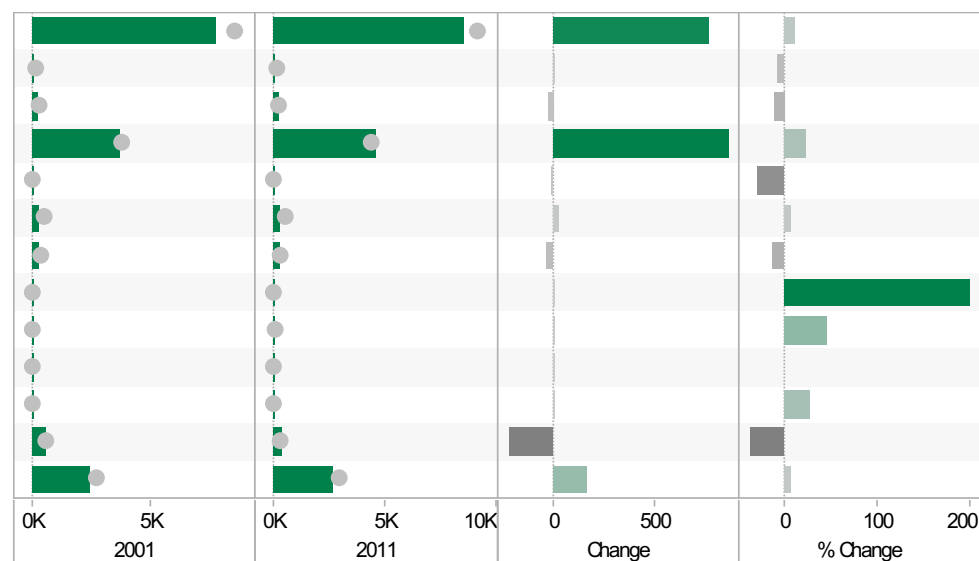
### Markfield, Desford and Thornton\* ED KS404EW : Car and Van Availability, 2001-11

	2001	2011	Change	% Change
All Households	4,401	4,984	583	13
No Cars or Vans in Household	667	591	-76	-11
1 Car or Van in Household	1,806	1,962	156	9
2 Cars or Vans in Household	1,520	1,835	315	21
3 Cars or Vans in Household	316	433	117	37
4 or More Cars or Vans in Household	92	163	71	77
All Cars or Vans in the Area	6,202	7,664	1,462	24



### Markfield, Desford and Thornton\* ED QS701EW : Method of Travel to Work, 2001-11

	2001	2011	Change	% Change
All Usual Residents Aged 16 to 74	7,744	8,514	770	10
Bicycle	72	67	-5	-7
Bus, Minibus or Coach	218	193	-25	-11
Driving a Car or Van	3,717	4,585	868	23
Motorcycle, Scooter or Moped	52	37	-15	-29
On Foot	300	321	21	7
Passenger in a Car or Van	304	265	-39	-13
Taxi	3	9	6	200
Train	13	19	6	46
Underground, Metro, Light Rail, Tram	0	4	4	
Other Method of Travel to Work	22	28	6	27
Work Mainly at or From Home	598	372	-226	-38
Not in Employment	2,445	2,614	169	7



Source: Office for National Statistics (ONS), 2013.  
Produced by the Research and Insight Team, Leicestershire County Council.

If you require information contained in this leaflet in another version e.g. large print, Braille, tape or alternative language please telephone: 0116 305 6803, Fax: 0116 305 7271 or Minicom: 0116 305 6160.

ਜੇ ਆਪ ਆ ਮਾਭਿਨੀ ਆਪਨੀ ਆਧਾਮਾਂ ਸਮਝਵਾਮਾਂ ਥੋੜੀ ਮਦਦ ਈਝਤਾਂ ਡੋ ਤੋ 0116 305 6803 ਨੰਬਰ ਪਰ ਝੋਨ ਕਰਥੋ ਅਨੇ ਅਮੇ ਆਪਨੇ ਮਦਦ ਕਰਵਾ ਅਵਥਾ ਕਰੀਥੁੰ.

ਜੇਕਰ ਤੁਹਾਨੂੰ ਇਸ ਜਾਣਕਾਰੀ ਨੂੰ ਸਮਝਣ ਵਿਚ ਕੁਝ ਮਦਦ ਚਾਹੀਦੀ ਹੈ ਤਾਂ ਕਿਰਪਾ ਕਰਕੇ 0116 305 6803 ਨੰਬਰ ਤੇ ਫ਼ੋਨ ਕਰੋ ਅਤੇ ਅਸੀਂ ਤੁਹਾਡੀ ਮਦਦ ਲਈ ਕਿਸੇ ਦਾ ਪ੍ਰਬੰਧ ਕਰ ਦਵਾਂਗੇ।

এই তথ্য নিজের ভাষায় বুঝার জন্য আপনার যদি কোন সাহায্যের প্রয়োজন হয়, তবে 0116 305 6803 এই নম্বরে ফোন করলে আমরা উপযুক্ত ব্যক্তির ব্যবস্থা করবো।

اگر آپ کو یہ معلومات سمجھنے میں کچھ مدد درکار ہے تو براہ مہربانی اس نمبر پر کال کریں اور ہم آپ کی مدد کے لئے کسی کا انتظام کر دیں گے۔ 0116 305 6803

假如閣下需要幫助，用你的語言去明白這些資訊，請致電 0116 305 6803，我們會安排有關人員為你提供幫助。

Jeżeli potrzebujesz pomocy w zrozumieniu tej informacji w Twoim języku, zadzwoń pod numer 0116 305 6803, a my Ci dopomożemy.

Research & Insight Team  
Strategy, Partnerships & Communities  
Chief Executive's Department  
Leicestershire County Council  
County Hall  
Glenfield  
Leicester  
LE3 8RA

[ri@leics.gov.uk](mailto:ri@leics.gov.uk)  
[www.lsr-online.org](http://www.lsr-online.org)