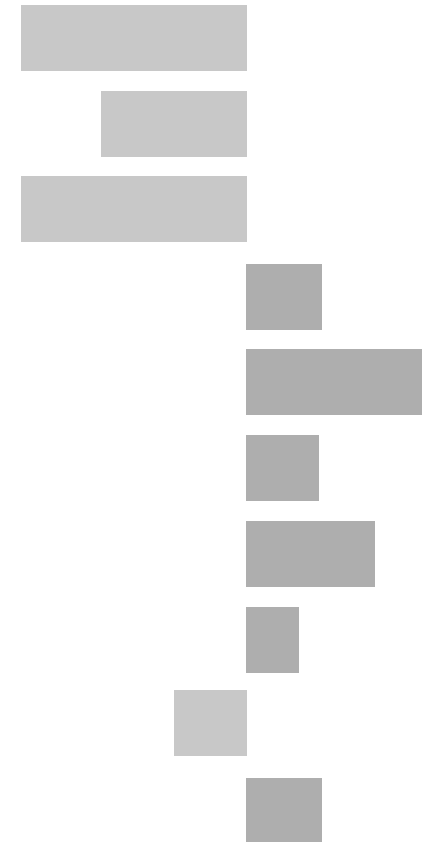


# Gartree Electoral Division

## 2011 Census Key Statistics

Alex Lea  
May 2013

Research and Insight Team  
Leicestershire County Council



**Alex Lea**

Research & Insight Manager

Research & Insight Team  
Strategy, Partnerships & Communities  
Leicestershire County Council  
County Hall  
Glenfield  
Leicester LE3 8RB

Tel 0116 305 6803

Email [alex.lea@leics.gov.uk](mailto:alex.lea@leics.gov.uk)

Produced by the Research and Insight Team at Leicestershire County Council.

Whilst every effort has been made to ensure the accuracy of the information contained within this report, Leicestershire County Council cannot be held responsible for any errors or omission relating to the data contained within the report.

## CONTENTS

### Introduction

About this Report	4
2011 Census	4
Data	5
Census Geography	5
Indicator Changes 2001-11	6

### Population

KS101EW - Usual Resident Population	7
KS102EW - Age Structure	7

### Households

KS105EW - Household Composition	8
KS402EW - Tenure	9

### Health and Caring

KS301EW - Health and Provision of Unpaid Care	9
---	---

### Ethnicity

KS201EW - Ethnic Group	10
------------------------	----

### Economy

KS601EW - Economic Activity	11
KS605EW - Industry	12

### Transport

KS404EW - Car and Van Availability	13
QS701EW - Method of Travel to Work	13

## INTRODUCTION

### ABOUT THIS REPORT

This report provides a broad overview of the 2011 Census Key Statistics data, released by the Office for National Statistics on 30th January 2013, as part of the Second Release. This report summarises a selection of key headline datasets of this release for Leicestershire Electoral Divisions (EDs).

The Research and Insight Team at Leicestershire County Council has used data from the Second release to create an interactive Tableau dashboard containing 32 datasets covering the following geographies:

- England
- East Midlands
- East Midlands counties . Including Leicestershire
- Leicester City and Rutland Unitary Authorities
- Leicestershire districts

In addition, a headline report covers the results for Leicestershire and the seven districts that make up the county. The dashboard and report are available at the following links:

#### Census 2011 Key Statistics Dashboard

<http://public.tableausoftware.com/views/LAKeyStatsDashboard/Dashboard>

May 2013

#### Census 2011 Key Statistics Headline Report

[http://www.lsr-online.org/reports/census\\_2011\\_key\\_statistics\\_headline\\_report/download/1/Census%202011%20Second%20Release%20FINAL.pdf](http://www.lsr-online.org/reports/census_2011_key_statistics_headline_report/download/1/Census%202011%20Second%20Release%20FINAL.pdf)

### 2011 CENSUS

Census statistics help paint a picture of the nation and how we live. They provide a detailed snapshot of the population and its characteristics, and underpin funding allocation to provide public services.<sup>1</sup> Data from the 2011 Census is made available at a variety of different levels of geography and in various releases.

The Key Statistics data covers a broad range of socio-economic topics, including data on ethnicity, health and employment. Each Key Statistic dataset is referred to by its unique three-digit code with the 'KS' prefix to denote a Key statistic (e.g. KS101). These are used throughout the report.

A full list of the 35 Key Statistics data tables are available here:

<http://www.ons.gov.uk/ons/publications/re-reference-tables.html?edition=tcm%3A77-286262>

<sup>1</sup> Office for National Statistics (ONS), 2013.

Further results from the census will be released throughout 2013, for more information, please visit:

<http://www.lsr-online.org/census-2011.html>

More information on the 2011 Census can be found here:

<http://www.ons.gov.uk/ons/guide-method/census/2011/index.html>

## DATA

Data has been compiled for Leicestershire Electoral Divisions, covering the key datasets from the 2011 Census Key statistics.

Figures for 2011 and 2001 are included, along with the overall and percentage change between the two censuses. Data for each indicator is presented in a table and chart.

Population data is displayed in a table, a population pyramid and a chart showing percentage change between 2001 and 2011. All other data is displayed in tables, and charts. Charts for change between 2001 and 2011 are coloured according to the degree of change between the two censuses; grey corresponds to smallest change and green the largest change. A marker indicates the average figure for all Leicestershire Electoral Divisions.

## GEOGRAPHY

Maps for all County Council Electoral Divisions can be found here:

[http://www.leics.gov.uk/index/your\\_council/local\\_democracy/conductofcouncillorsandemployees/electoraldivisionmapsindex/electoraldivisionmaps.htm](http://www.leics.gov.uk/index/your_council/local_democracy/conductofcouncillorsandemployees/electoraldivisionmapsindex/electoraldivisionmaps.htm)

As Census data is not made available for Electoral Divisions, smaller areas, called Lower Super Output Areas (LSOAs) have been used as building blocks for the figures included in this report. LSOAs are small parcels of geography, containing a minimum of 1,000 people, a maximum of 3,000 and an average of 1,500. LSOAs were initially developed for the 2001 Census and are used to release a range of neighbourhood-level datasets from various sources. There are 396 LSOAs in Leicestershire.

In some instances, LSOAs do not fit neatly within Electoral Divisions and in these cases, population weighted centroids - representing the 'centre of gravity' for population within an area - have been used in order to assign each LSOA to an Electoral Division. Electoral Divisions that fall within this category are indicated with a (\*).

More information on Lower Super Output Areas can be found here:

<http://www.ons.gov.uk/ons/guide-method/geography/beginner-s-guide/census/super-output-areas--soas-/index.html>

## INDICATOR CHANGES 2001-11

The following questions were asked in slightly different ways in 2011 compared to 2001. As such, care should be taken when making comparison between years.

### **KS201EW : Ethnic Group**

Asian/Asian British: Chinese  
Mixed/multiple ethnic group: Other Mixed  
Mixed/multiple ethnic group: White and Asian  
Mixed/multiple ethnic group: White and Black African  
Mixed/multiple ethnic group: White and Black Caribbean  
Other ethnic group: Any other ethnic group  
White: English/Welsh/Scottish/Northern Irish/British  
White: Other White

### **KS301EW : Health and Provision of Unpaid Care**

Day-to-day activities limited  
Day-to-day activities limited: Age 16 to 64  
Day-to-day activities not limited  
Fair health  
Very/ bad Health  
Very/ good Health

### **KS601EW : Economic Activity**

All usual residents aged 16 and over  
Economically active: Employee: Full-time  
Economically active: Employee: Part-time  
Economically active: Full-time student

Economically active: Self-employed  
Economically active: Unemployed  
Economically inactive: Long-term sick or disabled  
Economically inactive: Looking after home or family  
Economically inactive: Other  
Economically inactive: Retired  
Economically inactive: Student (including full-time)  
Long-term unemployed  
Unemployed: Age 50 and over  
Unemployed: Never worked

### **KS605EW : Industry**

All usual residents aged 16 and over in employment  
A Agriculture, forestry and fishing  
B Mining and quarrying  
C Manufacturing  
D, F Electricity, gas, steam, air conditioning supply etc  
F Construction  
G Wholesale and retail trade; repair of motor vehicles etc  
H, J Transport, storage, information and communication  
I Accommodation and food service activities  
K Financial and insurance activities  
L,M,N Real estate activities Professional, scientific etc  
O Public administration and defence etc  
P Education  
Q Human health and social work activities  
R, S, T, U Other

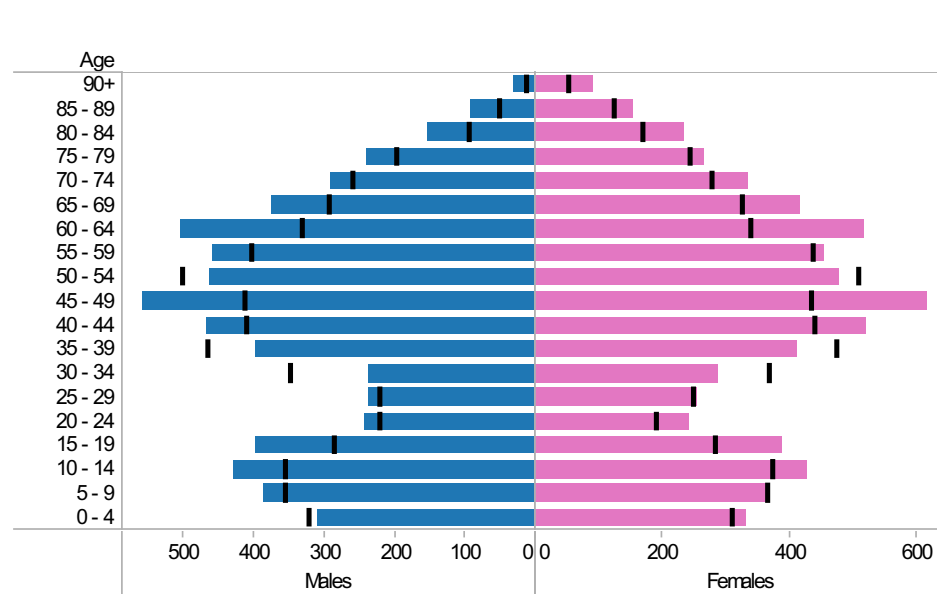
## Gartree ED: KS101EW : Usual Resident Population, KS102EW : Age Structure

■ Males     
 ■ Females     
 ■ Persons

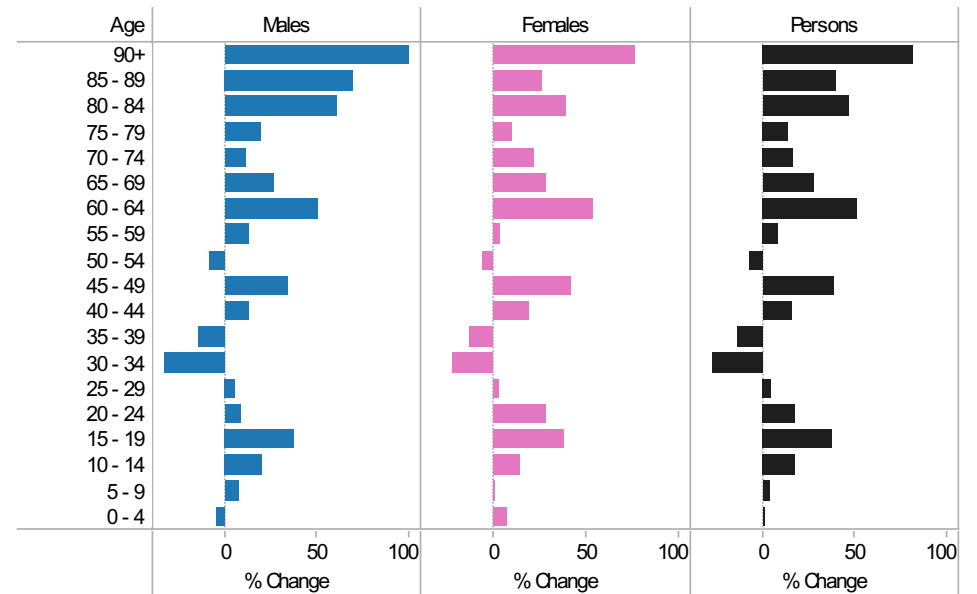
### 2001-11 Population by sex and quinary age band

Age	Males			Females			Persons		
	2001	2011	Change 2001-11	2001	2011	Change 2001-11	2001	2011	Change 2001-11
90+	15	30	15	51	90	39	66	120	54
85 - 89	53	90	37	121	153	32	174	243	69
80 - 84	96	154	58	167	232	65	263	386	123
75 - 79	200	240	40	240	264	24	440	504	64
70 - 74	261	291	30	275	335	60	536	626	90
65 - 69	295	374	79	323	416	93	618	790	172
60 - 64	333	502	169	337	517	180	670	1,019	349
55 - 59	404	458	54	436	454	18	840	912	72
50 - 54	503	463	-40	506	478	-28	1,009	941	-68
45 - 49	415	559	144	433	616	183	848	1,175	327
40 - 44	413	467	54	437	520	83	850	987	137
35 - 39	466	398	-68	472	412	-60	938	810	-128
30 - 34	350	237	-113	365	286	-79	715	523	-192
25 - 29	222	236	14	247	255	8	469	491	22
20 - 24	222	241	19	188	241	53	410	482	72
15 - 19	288	398	110	280	388	108	568	786	218
10 - 14	356	430	74	372	428	56	728	858	130
5 - 9	357	386	29	364	364	0	721	750	29
0 - 4	324	310	-14	308	331	23	632	641	9
All Ages	5,573	6,264	691	5,922	6,780	858	11,495	13,044	1,549

### 2011 (coloured bars) and 2001 (black marks) population by sex and quinary age



### 2001-11 Percentage change by sex and quinary age band



**Gartree ED**  
**KS105EW : Household Composition, 2001-11**

**Coloured bar** - data for Electoral Division  
**Grey circle** - average for all Leicestershire Electoral Divisions

	2001	2011	Change	% Change
All Households	4,778	5,462	684	14
One Family Only; All Aged 65 and Over	568	656	88	15
One Family Only; Cohabiting Couple; All Children Non-Dependent	9	20	11	122
One Family Only; Cohabiting Couple; Dependent Children	121	151	30	25
One Family Only; Cohabiting Couple; No Children	221	281	60	27
One Family Only; Lone Parent; All Children Non-Dependent	109	127	18	17
One Family Only; Lone Parent; Dependent Children	202	266	64	32
One Family Only; Married or Same-Sex Civil Partnership Couple; All Children Non-Dependent	303	332	29	10
One Family Only; Married or Same-Sex Civil Partnership Couple; Dependent Children	1,021	1,048	27	3
One Family Only; Married or Same-Sex Civil Partnership Couple; No Children	854	863	9	1
One Person Household; Aged 65 and Over	671	754	83	12
One Person Household; Other	540	735	195	36
Other Household Types; All Aged 65 and Over	22	11	-11	-50
Other Household Types; All Full-Time Students	0	0	0	
Other Household Types; Other	79	117	38	48
Other Household Types; With Dependent Children	58	101	43	74

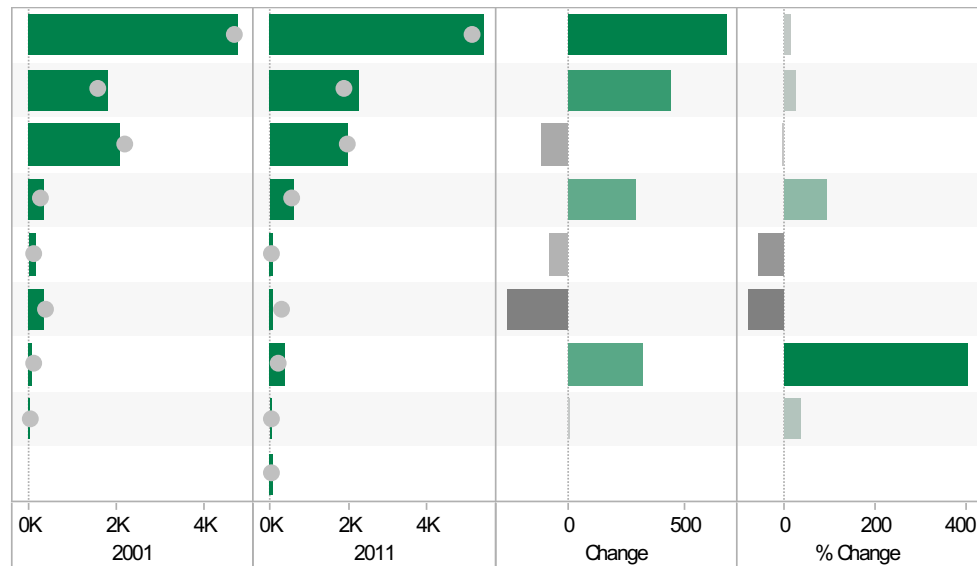


Source: Office for National Statistics (ONS), 2013.  
Produced by the Research and Insight Team, Leicestershire County Council.



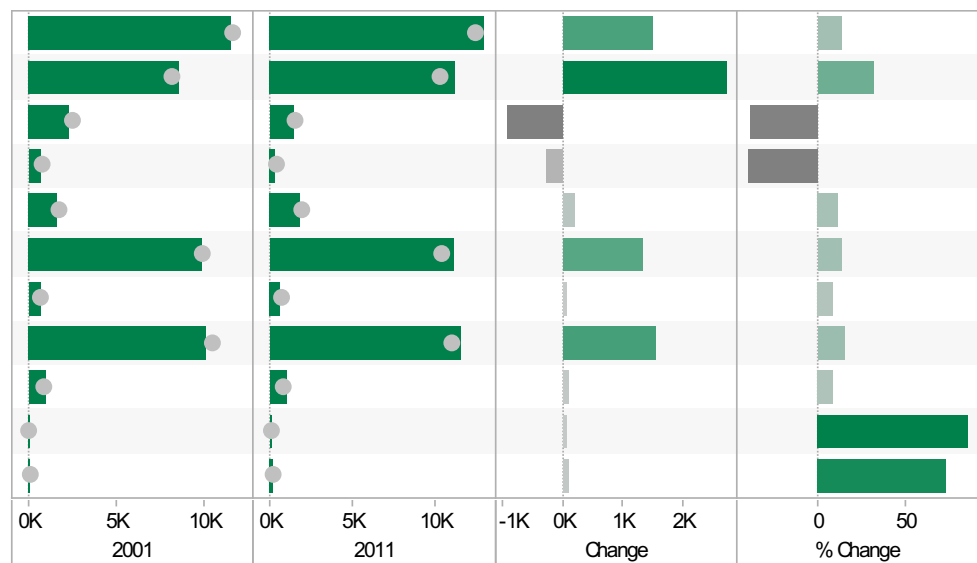
## Gartree ED KS402EW: Tenure, 2001-11

	2001	2011	Change	% Change
All Households	4,786	5,462	676	14
Owned; Owned Outright	1,808	2,247	439	24
Owned; Owned with a Mortgage or Loan	2,088	1,976	-112	-5
Private Rented; Private Landlord or Letting Agency	315	608	293	93
Private Rented; Other	140	62	-78	-56
Social Rented; Rented from Council (Local Authority)	325	62	-263	-81
Social Rented; Other	79	397	318	403
Shared Ownership (Part Owned and Part Rented)	31	42	11	35
Living Rent Free		68		



## Gartree ED KS301EW: Health and Provision of Unpaid Care, 2001-11

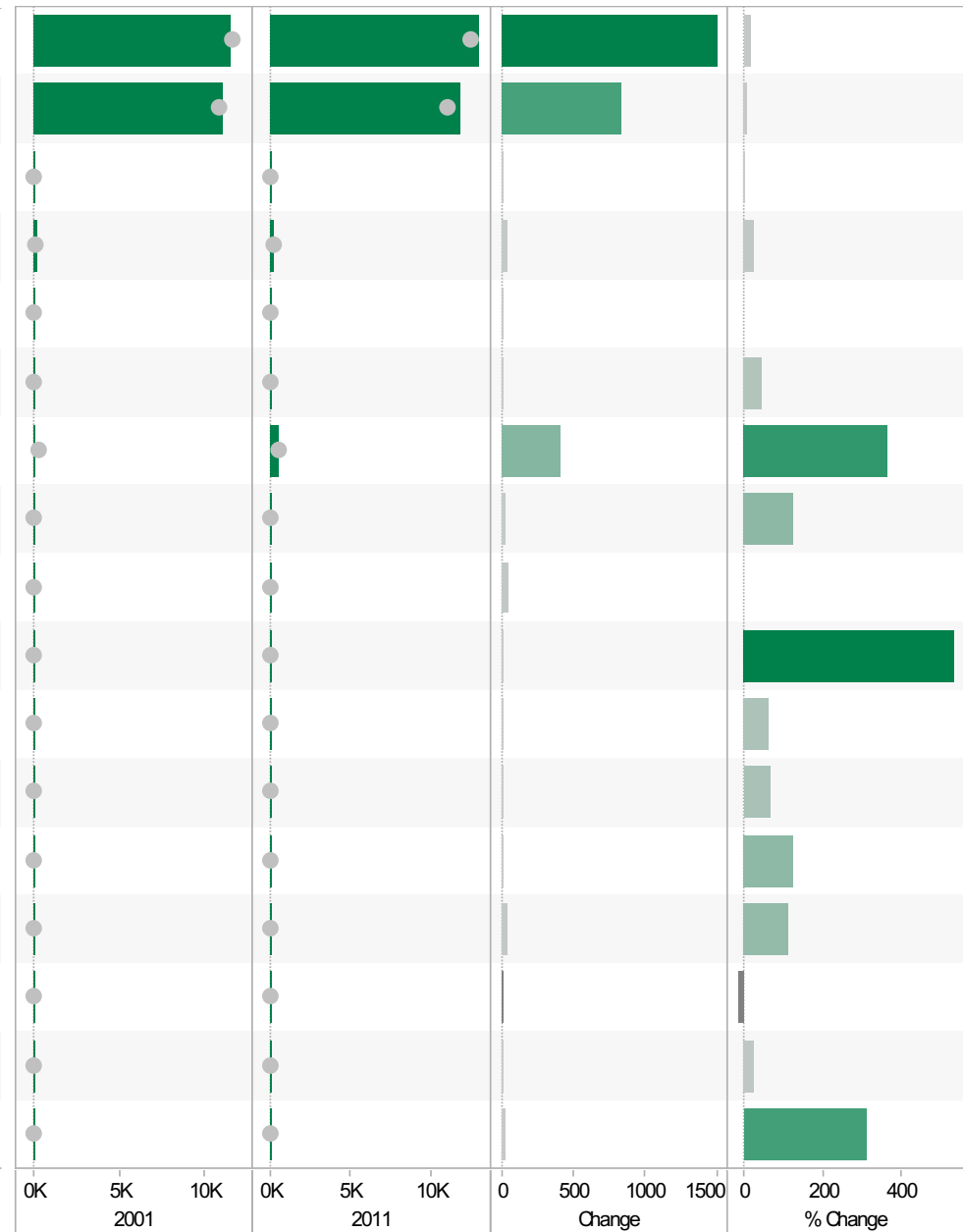
	2001	2011	Change	% Change
All usual residents	11,543	13,044	1,501	13
Very/ good Health	8,513	11,229	2,716	32
Fair health	2,364	1,423	-941	-40
Very/ bad Health	666	392	-274	-41
Day-to-day activities limited	1,667	1,857	190	11
Day-to-day activities not limited	9,876	11,187	1,311	13
Day-to-day activities limited a lot: Age 16 to 64	654	706	52	8
Provides no unpaid care	10,053	11,610	1,557	15
Provides 1 to 19 hours unpaid care a week	985	1,069	84	9
Provides 20 to 49 hours unpaid care a week	80	149	69	86
Provides 50 or more hours unpaid care a week	124	216	92	74



**Gartree ED**  
**KS201EW : Ethnic Group, 2001-11**

**Coloured bar** - data for Electoral Division  
**Grey circle** - average for all Leicestershire Electoral Divisions

	2001	2011	Change	% Change
All usual residents	11,546	13,044	1,498	13
White: English/Welsh/Scottish/Northern Irish/British	11,055	11,895	840	8
White: Irish	60	60	0	0
White: Other White	160	195	35	22
Asian/Asian British: Bangladeshi	0	6	6	
Asian/Asian British: Chinese	15	22	7	47
Asian/Asian British: Indian	112	522	410	366
Asian/Asian British: Other Asian	26	59	33	127
Asian/Asian British: Pakistani	0	48	48	
Black/African/Caribbean/Black British: African	3	19	16	533
Black/African/Caribbean/Black British: Caribbean	10	16	6	60
Black/African/Caribbean/Black British: Other Black	3	5	2	67
Mixed/multiple ethnic group: Other Mixed	12	27	15	125
Mixed/multiple ethnic group: White and Asian	39	83	44	113
Mixed/multiple ethnic group: White and Black African	6	5	-1	-17
Mixed/multiple ethnic group: White and Black Caribbean	36	45	9	25
Other ethnic group: Any other ethnic group	9	37	28	311

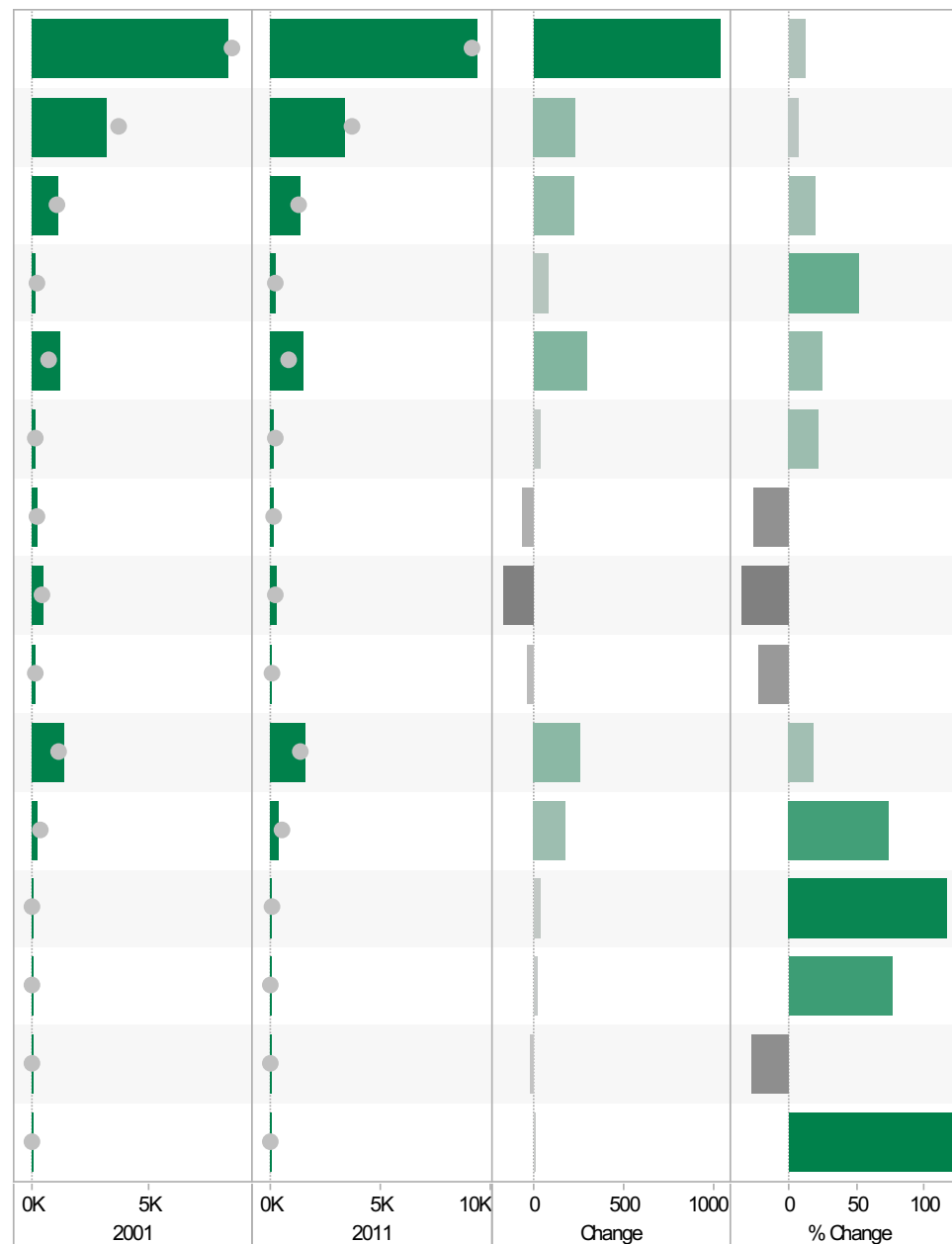


Source: Office for National Statistics (ONS), 2013.  
Produced by the Research and Insight Team, Leicestershire County Council.

**Gartree ED**  
**KS601EW : Economic Activity, 2001-11**

**Coloured bar** - data for Electoral Division  
**Grey circle** - average for all Leicestershire Electoral Divisions

	2001	2011	Change	% Change
All usual residents aged 16 and over	8,344	9,381	1,037	12
Economically active: Employee: Full-time	3,197	3,426	229	7
Economically active: Employee: Part-time	1,153	1,373	220	19
Economically active: Full-time student	160	242	82	51
Economically active: Self-employed	1,209	1,511	302	25
Economically active: Unemployed	165	201	36	22
Economically inactive: Long-term sick or disabled	231	170	-61	-26
Economically inactive: Looking after home or family	489	317	-172	-35
Economically inactive: Other	150	116	-34	-23
Economically inactive: Retired	1,347	1,603	256	19
Economically inactive: Student (including full-time students)	243	422	179	74
Long-term unemployed	29	63	34	117
Unemployed: Age 16 to 24	26	46	20	77
Unemployed: Age 50 and over	54	39	-15	-28
Unemployed: Never worked	8	18	10	125

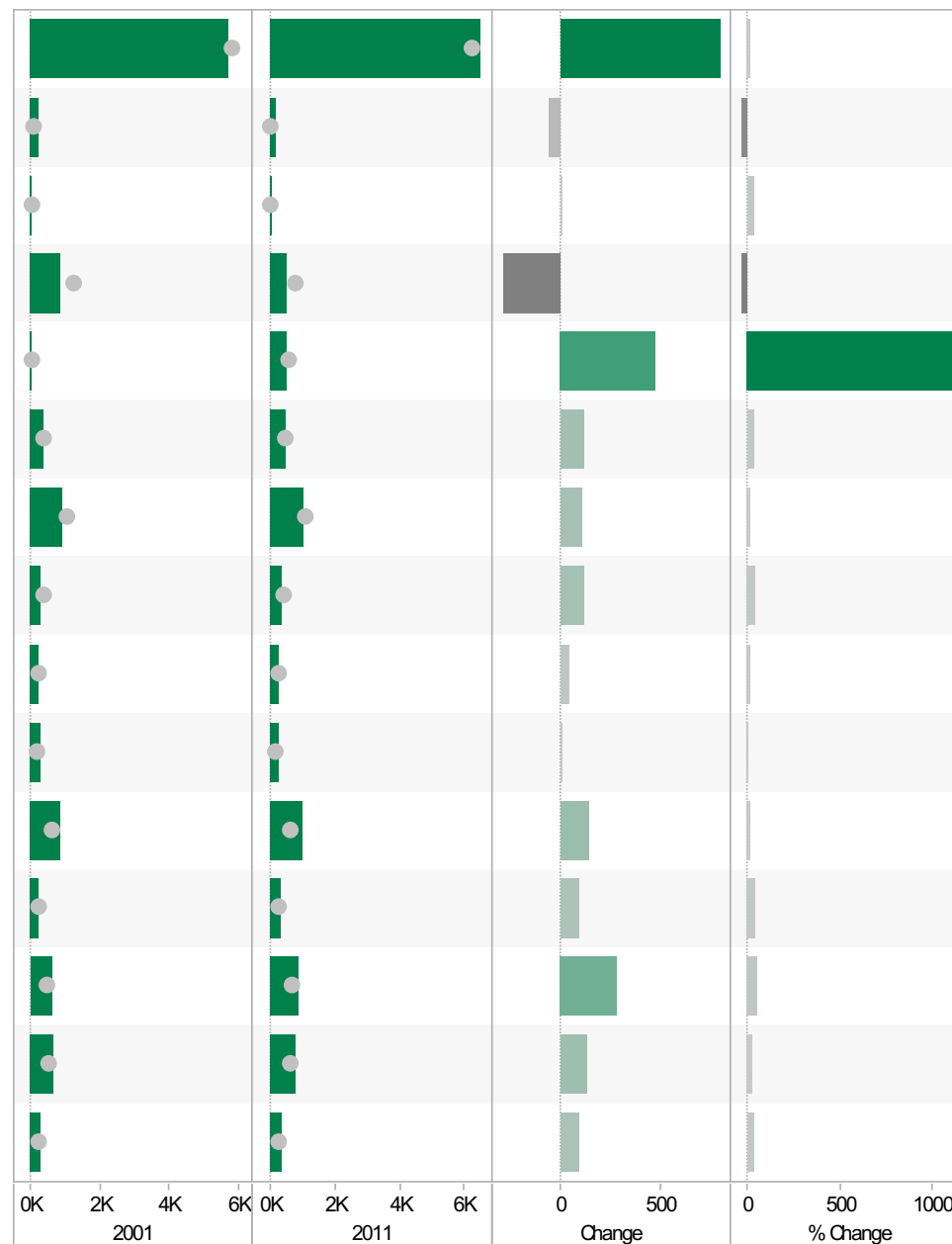


Source: Office for National Statistics (ONS), 2013.  
Produced by the Research and Insight Team, Leicestershire County Council.

**Gartree ED**  
**KS605EW : Industry, 2001-11**

**Coloured bar** - data for Electoral Division  
**Grey circle** - average for all Leicestershire Electoral Divisions

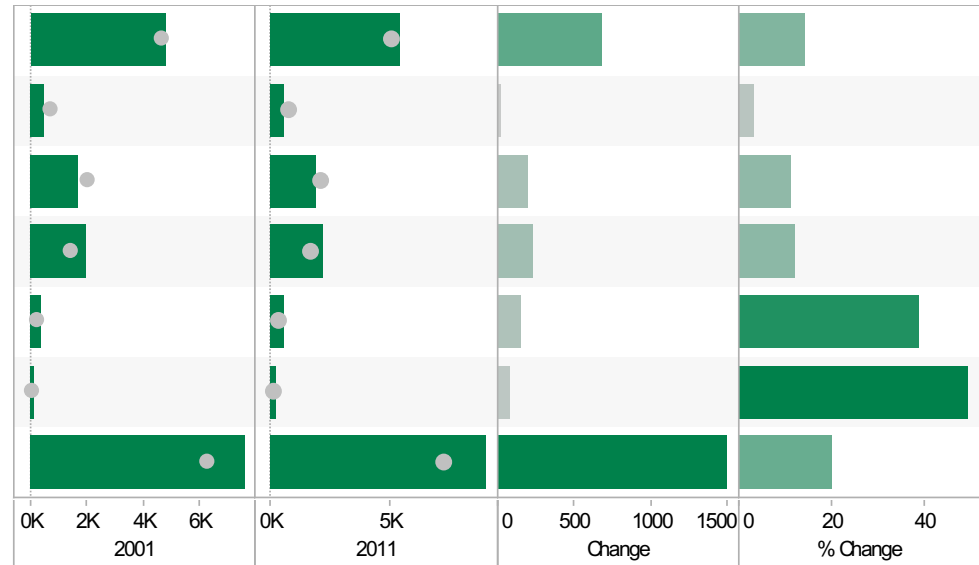
	2001	2011	Change	% Change
All usual residents aged 16 and over in employment	5,714	6,514	800	14
A Agriculture, forestry and fishing	211	149	-62	-29
B Mining and quarrying	6	8	2	33
C Manufacturing	834	545	-289	-35
D, F Electricity, gas, steam, air conditioning supply, water and sewerage	42	519	477	1,136
F Construction	364	482	118	32
G Wholesale and retail trade; repair of motor vehicles and motor cycles	913	1,021	108	12
H, J Transport, storage, information and communication	275	389	114	41
I Accommodation and food service activities	234	273	39	17
K Financial and insurance activities	286	282	-4	-1
L, M, N Real estate activities Professional, scientific and technical activities Administrative and support service activities	822	968	146	18
O Public administration and defence; compulsory social security	225	315	90	40
P Education	604	892	288	48
Q Human health and social work activities	643	778	135	21
R, S, T, U Other	255	350	95	37



Source: Office for National Statistics (ONS), 2013.  
Produced by the Research and Insight Team, Leicestershire County Council.

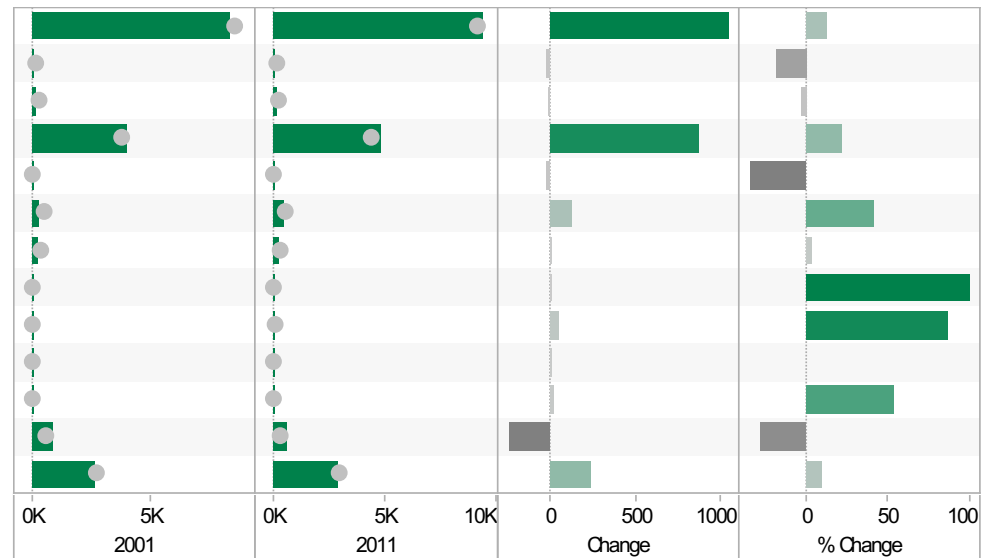
**Gartree ED**  
**KS404EW : Car and Van Availability, 2001-11**

	2001	2011	Change	% Change
All Households	4,783	5,462	679	14
No Cars or Vans in Household	525	542	17	3
1 Car or Van in Household	1,726	1,920	194	11
2 Cars or Vans in Household	1,975	2,211	236	12
3 Cars or Vans in Household	405	562	157	39
4 or More Cars or Vans in Household	152	227	75	49
All Cars or Vans in the Area	7,565	9,063	1,498	20



**Gartree ED**  
**QS701EW : Method of Travel to Work, 2001-11**

	2001	2011	Change	% Change
All Usual Residents Aged 16 to 74	8,341	9,381	1,040	12
Bicycle	74	60	-14	-19
Bus, Minibus or Coach	162	157	-5	-3
Driving a Car or Van	3,959	4,830	871	22
Motorcycle, Scooter or Moped	43	28	-15	-35
On Foot	304	429	125	41
Passenger in a Car or Van	225	231	6	3
Taxi	3	6	3	100
Train	56	105	49	88
Underground, Metro, Light Rail, Tram	0	8	8	
Other Method of Travel to Work	35	54	19	54
Work Mainly at or From Home	846	606	-240	-28
Not in Employment	2,634	2,867	233	9



Source: Office for National Statistics (ONS), 2013.  
Produced by the Research and Insight Team, Leicestershire County Council.

If you require information contained in this leaflet in another version e.g. large print, Braille, tape or alternative language please telephone: 0116 305 6803, Fax: 0116 305 7271 or Minicom: 0116 305 6160.

ਜੇ ਆਪ ਆ ਮਾਭਿਨੀ ਆਪਨੀ ਆਧਾਮਾਂ ਸਮਝਵਾਮਾਂ ਥੋੜੀ ਮਦਦ ਈਝਤਾਂ ਡੋ ਤੋ 0116 305 6803 ਨੰਬਰ ਪਰ ਝੋਨ ਕਰਥੋ ਅਨੇ ਅਮੇ ਆਪਨੇ ਮਦਦ ਕਰਵਾ ਅਵਥਾ ਕਰੀਥੁੰ.

ਜੇਕਰ ਤੁਹਾਨੂੰ ਇਸ ਜਾਣਕਾਰੀ ਨੂੰ ਸਮਝਣ ਵਿਚ ਕੁਝ ਮਦਦ ਚਾਹੀਦੀ ਹੈ ਤਾਂ ਕਿਰਪਾ ਕਰਕੇ 0116 305 6803 ਨੰਬਰ ਤੇ ਫ਼ੋਨ ਕਰੋ ਅਤੇ ਅਸੀਂ ਤੁਹਾਡੀ ਮਦਦ ਲਈ ਕਿਸੇ ਦਾ ਪ੍ਰਬੰਧ ਕਰ ਦਵਾਂਗੇ।

এই তথ্য নিজের ভাষায় বুঝার জন্য আপনার যদি কোন সাহায্যের প্রয়োজন হয়, তবে 0116 305 6803 এই নম্বরে ফোন করলে আমরা উপযুক্ত ব্যক্তির ব্যবস্থা করবো।

اگر آپ کو یہ معلومات سمجھنے میں کچھ مدد درکار ہے تو براہ مہربانی اس نمبر پر کال کریں اور ہم آپ کی مدد کے لئے کسی کا انتظام کر دیں گے۔ 0116 305 6803

假如閣下需要幫助，用你的語言去明白這些資訊，請致電 0116 305 6803，我們會安排有關人員為你提供幫助。

Jeżeli potrzebujesz pomocy w zrozumieniu tej informacji w Twoim języku, zadzwoń pod numer 0116 305 6803, a my Ci dopomożemy.

Research & Insight Team  
Strategy, Partnerships & Communities  
Chief Executive's Department  
Leicestershire County Council  
County Hall  
Glenfield  
Leicester  
LE3 8RA

[ri@leics.gov.uk](mailto:ri@leics.gov.uk)  
[www.lsr-online.org](http://www.lsr-online.org)