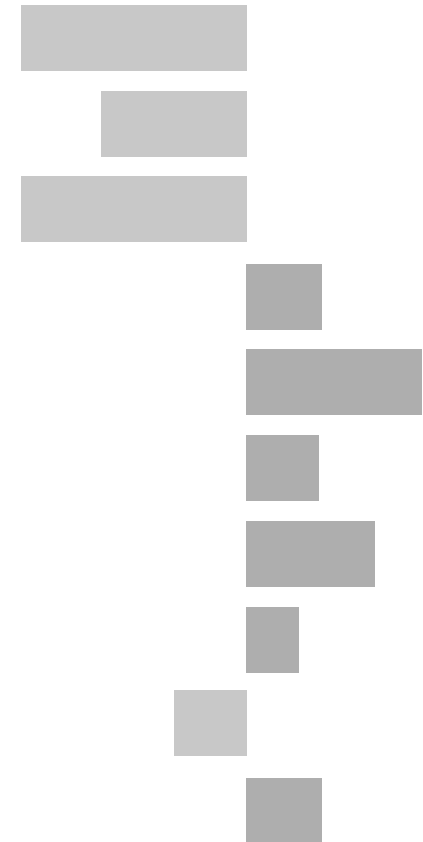


Launde Electoral Division

2011 Census Key Statistics

Alex Lea
May 2013

Research and Insight Team
Leicestershire County Council



Alex Lea

Research & Insight Manager

Research & Insight Team
Strategy, Partnerships & Communities
Leicestershire County Council
County Hall
Glenfield
Leicester LE3 8RB

Tel 0116 305 6803

Email alex.lea@leics.gov.uk

Produced by the Research and Insight Team at Leicestershire County Council.

Whilst every effort has been made to ensure the accuracy of the information contained within this report, Leicestershire County Council cannot be held responsible for any errors or omission relating to the data contained within the report.

CONTENTS

Introduction

About this Report	4
2011 Census	4
Data	5
Census Geography	5
Indicator Changes 2001-11	6

Population

KS101EW - Usual Resident Population	7
KS102EW - Age Structure	7

Households

KS105EW - Household Composition	8
KS402EW - Tenure	9

Health and Caring

KS301EW - Health and Provision of Unpaid Care	9
-----------------------------------------------	---

Ethnicity

KS201EW - Ethnic Group	10
------------------------	----

Economy

KS601EW - Economic Activity	11
KS605EW - Industry	12

Transport

KS404EW - Car and Van Availability	13
QS701EW - Method of Travel to Work	13

INTRODUCTION

ABOUT THIS REPORT

This report provides a broad overview of the 2011 Census Key Statistics data, released by the Office for National Statistics on 30th January 2013, as part of the Second Release. This report summarises a selection of key headline datasets of this release for Leicestershire Electoral Divisions (EDs).

The Research and Insight Team at Leicestershire County Council has used data from the Second release to create an interactive Tableau dashboard containing 32 datasets covering the following geographies:

- England
- East Midlands
- East Midlands counties . Including Leicestershire
- Leicester City and Rutland Unitary Authorities
- Leicestershire districts

In addition, a headline report covers the results for Leicestershire and the seven districts that make up the county. The dashboard and report are available at the following links:

Census 2011 Key Statistics Dashboard

<http://public.tableausoftware.com/views/LAKeyStatsDashboard/Dashboard>

May 2013

Census 2011 Key Statistics Headline Report

http://www.lsr-online.org/reports/census_2011_key_statistics_headline_report/download/1/Census%202011%20Second%20Release%20FINAL.pdf

2011 CENSUS

Census statistics help paint a picture of the nation and how we live. They provide a detailed snapshot of the population and its characteristics, and underpin funding allocation to provide public services.¹ Data from the 2011 Census is made available at a variety of different levels of geography and in various releases.

The Key Statistics data covers a broad range of socio-economic topics, including data on ethnicity, health and employment. Each Key Statistic dataset is referred to by its unique three-digit code with the 'KS' prefix to denote a Key statistic (e.g. KS101). These are used throughout the report.

A full list of the 35 Key Statistics data tables are available here:

<http://www.ons.gov.uk/ons/publications/re-reference-tables.html?edition=tcm%3A77-286262>

¹ Office for National Statistics (ONS), 2013.

Further results from the census will be released throughout 2013, for more information, please visit:

<http://www.lsr-online.org/census-2011.html>

More information on the 2011 Census can be found here:

<http://www.ons.gov.uk/ons/guide-method/census/2011/index.html>

DATA

Data has been compiled for Leicestershire Electoral Divisions, covering the key datasets from the 2011 Census Key statistics.

Figures for 2011 and 2001 are included, along with the overall and percentage change between the two censuses. Data for each indicator is presented in a table and chart.

Population data is displayed in a table, a population pyramid and a chart showing percentage change between 2001 and 2011. All other data is displayed in tables, and charts. Charts for change between 2001 and 2011 are coloured according to the degree of change between the two censuses; grey corresponds to smallest change and green the largest change. A marker indicates the average figure for all Leicestershire Electoral Divisions.

GEOGRAPHY

Maps for all County Council Electoral Divisions can be found here:

http://www.leics.gov.uk/index/your_council/local_democracy/conductofcouncillorsandemployees/electoraldivisionmapsindex/electoraldivisionmaps.htm

As Census data is not made available for Electoral Divisions, smaller areas, called Lower Super Output Areas (LSOAs) have been used as building blocks for the figures included in this report. LSOAs are small parcels of geography, containing a minimum of 1,000 people, a maximum of 3,000 and an average of 1,500. LSOAs were initially developed for the 2001 Census and are used to release a range of neighbourhood-level datasets from various sources. There are 396 LSOAs in Leicestershire.

In some instances, LSOAs do not fit neatly within Electoral Divisions and in these cases, population weighted centroids - representing the 'centre of gravity' for population within an area - have been used in order to assign each LSOA to an Electoral Division. Electoral Divisions that fall within this category are indicated with a (*).

More information on Lower Super Output Areas can be found here:

<http://www.ons.gov.uk/ons/guide-method/geography/beginner-s-guide/census/super-output-areas--soas-/index.html>

INDICATOR CHANGES 2001-11

The following questions were asked in slightly different ways in 2011 compared to 2001. As such, care should be taken when making comparison between years.

KS201EW : Ethnic Group

Asian/Asian British: Chinese
Mixed/multiple ethnic group: Other Mixed
Mixed/multiple ethnic group: White and Asian
Mixed/multiple ethnic group: White and Black African
Mixed/multiple ethnic group: White and Black Caribbean
Other ethnic group: Any other ethnic group
White: English/Welsh/Scottish/Northern Irish/British
White: Other White

KS301EW : Health and Provision of Unpaid Care

Day-to-day activities limited
Day-to-day activities limited: Age 16 to 64
Day-to-day activities not limited
Fair health
Very/ bad Health
Very/ good Health

KS601EW : Economic Activity

All usual residents aged 16 and over
Economically active: Employee: Full-time
Economically active: Employee: Part-time
Economically active: Full-time student

Economically active: Self-employed
Economically active: Unemployed
Economically inactive: Long-term sick or disabled
Economically inactive: Looking after home or family
Economically inactive: Other
Economically inactive: Retired
Economically inactive: Student (including full-time)
Long-term unemployed
Unemployed: Age 50 and over
Unemployed: Never worked

KS605EW : Industry

All usual residents aged 16 and over in employment
A Agriculture, forestry and fishing
B Mining and quarrying
C Manufacturing
D, F Electricity, gas, steam, air conditioning supply etc
F Construction
G Wholesale and retail trade; repair of motor vehicles etc
H, J Transport, storage, information and communication
I Accommodation and food service activities
K Financial and insurance activities
L,M,N Real estate activities Professional, scientific etc
O Public administration and defence etc
P Education
Q Human health and social work activities
R, S, T, U Other

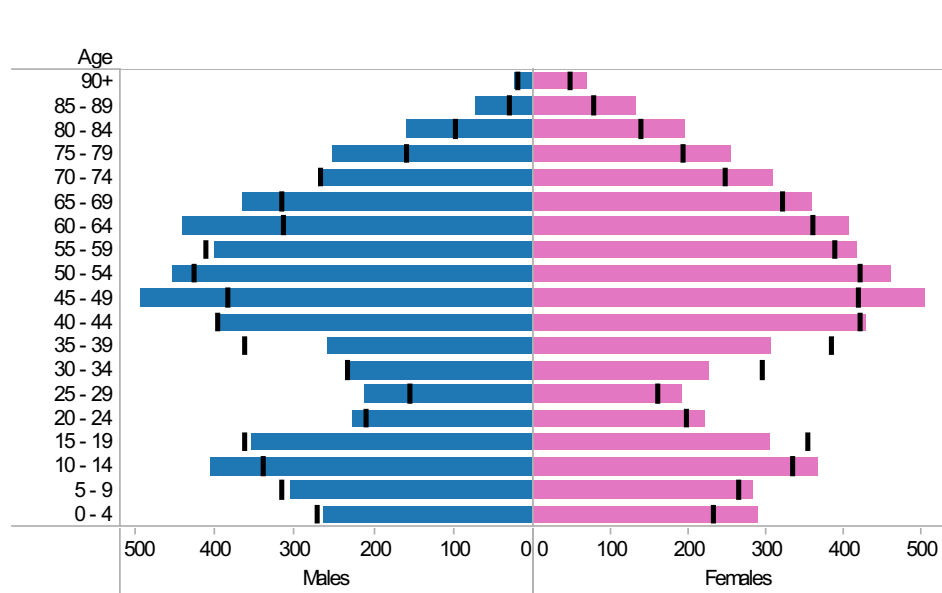
Launde ED: KS101EW : Usual Resident Population, KS102EW : Age Structure

■ Males
 ■ Females
 ■ Persons

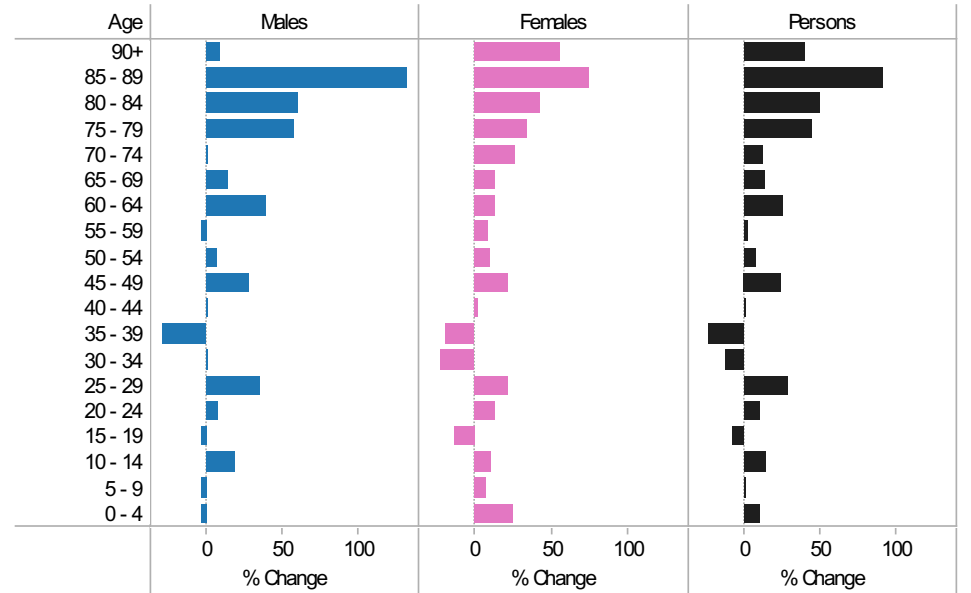
2001-11 Population by sex and quinary age band

Age	Males			Females			Persons		
	2001	2011	Change 2001-11	2001	2011	Change 2001-11	2001	2011	Change 2001-11
90+	22	24	2	45	70	25	67	94	27
85 - 89	31	72	41	76	133	57	107	205	98
80 - 84	99	158	59	137	195	58	236	353	117
75 - 79	160	252	92	191	255	64	351	507	156
70 - 74	268	267	-1	245	310	65	513	577	64
65 - 69	318	364	46	319	360	41	637	724	87
60 - 64	316	440	124	360	407	47	676	847	171
55 - 59	413	400	-13	387	418	31	800	818	18
50 - 54	428	454	26	420	462	42	848	916	68
45 - 49	386	494	108	417	506	89	803	1,000	197
40 - 44	397	396	-1	420	429	9	817	825	8
35 - 39	365	259	-106	383	308	-75	748	567	-181
30 - 34	235	235	0	294	226	-68	529	461	-68
25 - 29	157	212	55	158	192	34	315	404	89
20 - 24	212	227	15	197	223	26	409	450	41
15 - 19	365	353	-12	353	305	-48	718	658	-60
10 - 14	341	405	64	333	368	35	674	773	99
5 - 9	317	304	-13	264	282	18	581	586	5
0 - 4	274	263	-11	231	290	59	505	553	48
All Ages	5,104	5,579	475	5,230	5,739	509	10,334	11,318	984

2011 (coloured bars) and 2001 (black marks) population by sex and quinary age



2001-11 Percentage change by sex and quinary age band



Launde ED
KS105EW : Household Composition, 2001-11

Coloured bar - data for Electoral Division
Grey circle - average for all Leicestershire Electoral Divisions

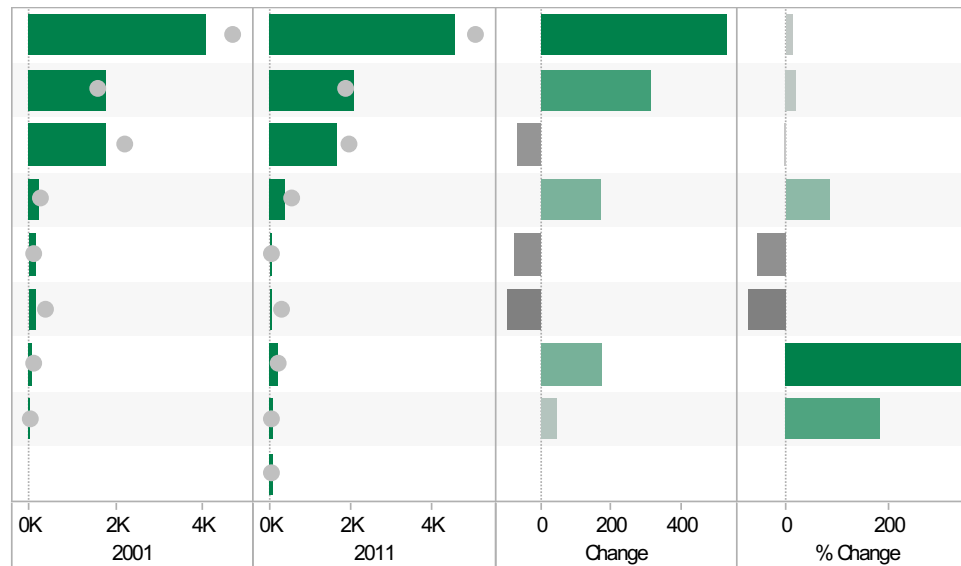
	2001	2011	Change	% Change
All Households	4,055	4,587	532	13
One Family Only; All Aged 65 and Over	572	642	70	12
One Family Only; Cohabiting Couple; All Children Non-Dependent	7	22	15	214
One Family Only; Cohabiting Couple; Dependent Children	106	132	26	25
One Family Only; Cohabiting Couple; No Children	170	185	15	9
One Family Only; Lone Parent; All Children Non-Dependent	81	104	23	28
One Family Only; Lone Parent; Dependent Children	124	162	38	31
One Family Only; Married or Same-Sex Civil Partnership Couple; All Children Non-Dependent	294	328	34	12
One Family Only; Married or Same-Sex Civil Partnership Couple; Dependent Children	896	929	33	4
One Family Only; Married or Same-Sex Civil Partnership Couple; No Children	773	735	-38	-5
One Person Household; Aged 65 and Over	527	587	60	11
One Person Household; Other	348	521	173	50
Other Household Types; All Aged 65 and Over	18	19	1	6
Other Household Types; All Full-Time Students	0	1	1	
Other Household Types; Other	71	114	43	61
Other Household Types; With Dependent Children	68	106	38	56



Source: Office for National Statistics (ONS), 2013.
Produced by the Research and Insight Team, Leicestershire County Council.

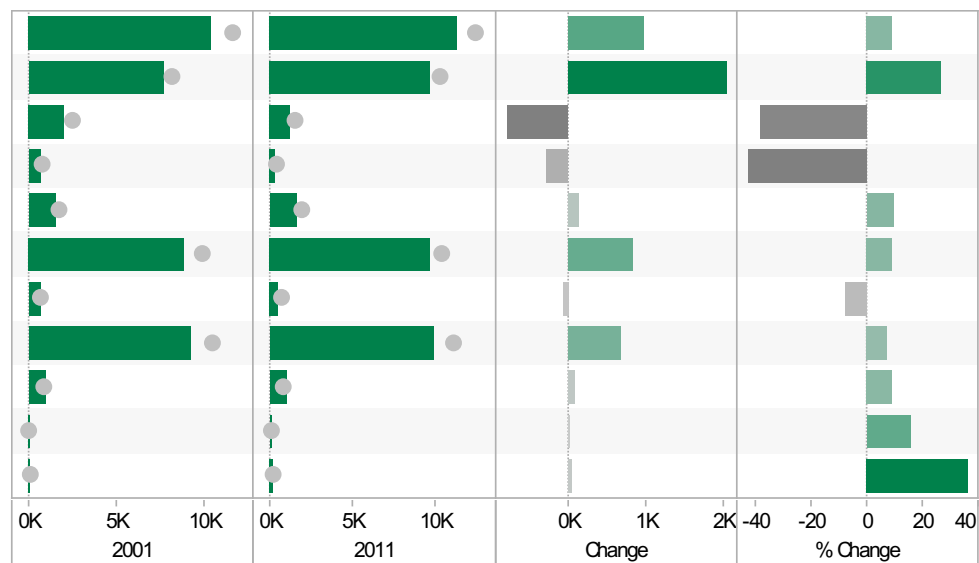
**Launde ED
KS402EW: Tenure, 2001-11**

	2001	2011	Change	% Change
All Households	4,060	4,587	527	13
Owned; Owned Outright	1,762	2,073	311	18
Owned; Owned with a Mortgage or Loan	1,756	1,687	-69	-4
Private Rented; Private Landlord or Letting Agency	204	373	169	83
Private Rented; Other	134	57	-77	-57
Social Rented; Rented from Council (Local Authority)	130	32	-98	-75
Social Rented; Other	50	226	176	352
Shared Ownership (Part Owned and Part Rented)	24	68	44	183
Living Rent Free		71		



**Launde ED
KS301EW: Health and Provision of Unpaid Care, 2001-11**

	2001	2011	Change	% Change
All usual residents	10,343	11,318	975	9
Very/ good Health	7,651	9,680	2,029	27
Fair health	2,045	1,267	-778	-38
Very/ bad Health	647	371	-276	-43
Day-to-day activities limited	1,537	1,686	149	10
Day-to-day activities not limited	8,806	9,632	826	9
Day-to-day activities limited a lot: Age 16 to 64	646	594	-52	-8
Provides no unpaid care	9,255	9,933	678	7
Provides 1 to 19 hours unpaid care a week	962	1,049	87	9
Provides 20 to 49 hours unpaid care a week	108	125	17	16
Provides 50 or more hours unpaid care a week	155	211	56	36

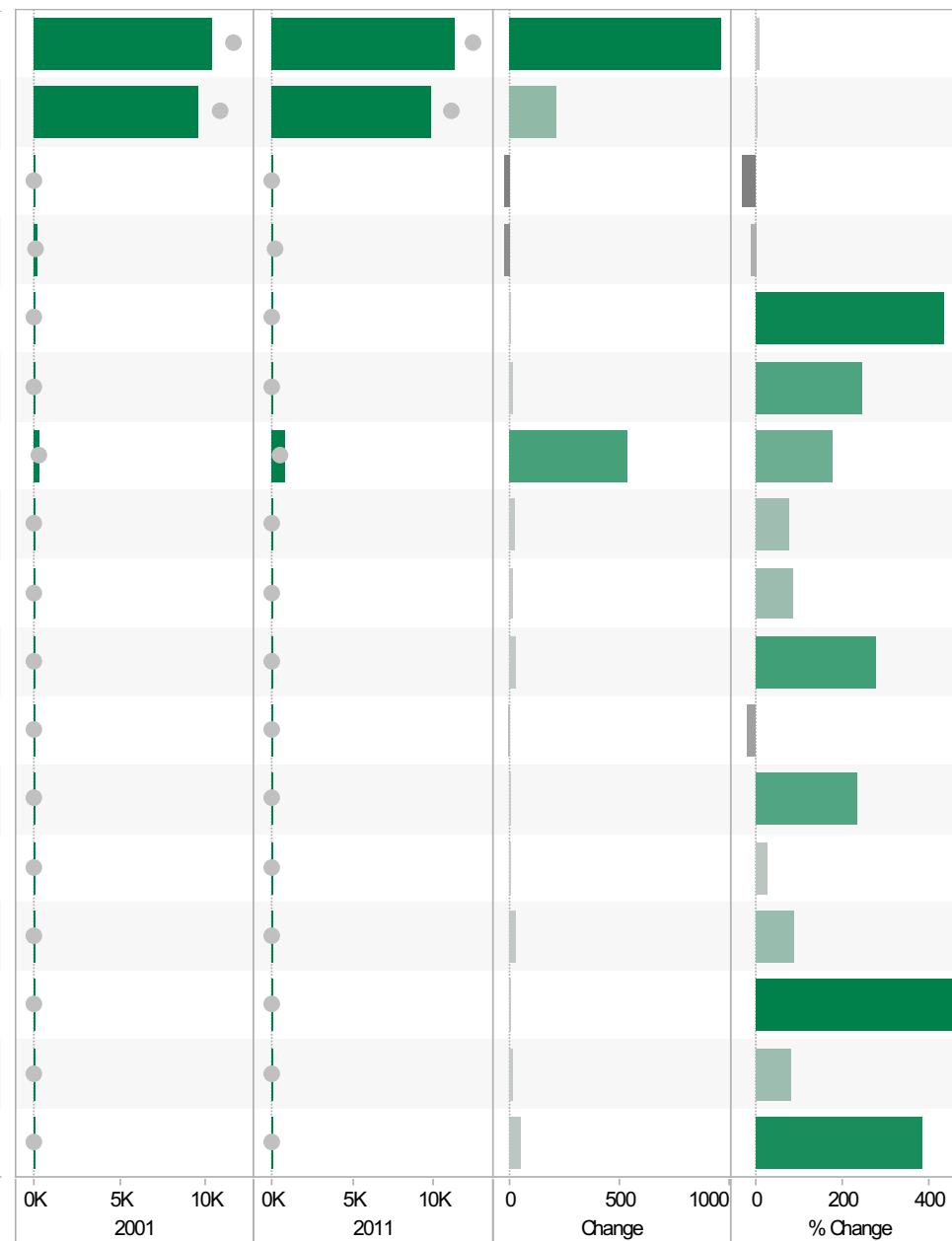


Source: Office for National Statistics (ONS), 2013.
Produced by the Research and Insight Team, Leicestershire County Council.

Launde ED
KS201EW : Ethnic Group, 2001-11

Coloured bar - data for Electoral Division
Grey circle - average for all Leicestershire Electoral Divisions

	2001	2011	Change	% Change
All usual residents	10,356	11,318	962	9
White: English/Welsh/Scottish/Northern Irish/British	9,612	9,826	214	2
White: Irish	71	48	-23	-32
White: Other White	164	145	-19	-12
Asian/Asian British: Bangladeshi	3	16	13	433
Asian/Asian British: Chinese	9	31	22	244
Asian/Asian British: Indian	305	849	544	178
Asian/Asian British: Other Asian	34	60	26	76
Asian/Asian British: Pakistani	20	37	17	85
Black/African/Caribbean/Black British: African	13	49	36	277
Black/African/Caribbean/Black British: Caribbean	22	18	-4	-18
Black/African/Caribbean/Black British: Other Black	3	10	7	233
Mixed/multiple ethnic group: Other Mixed	18	23	5	28
Mixed/multiple ethnic group: White and Asian	40	76	36	90
Mixed/multiple ethnic group: White and Black African	3	17	14	467
Mixed/multiple ethnic group: White and Black Caribbean	25	45	20	80
Other ethnic group: Any other ethnic group	14	68	54	386

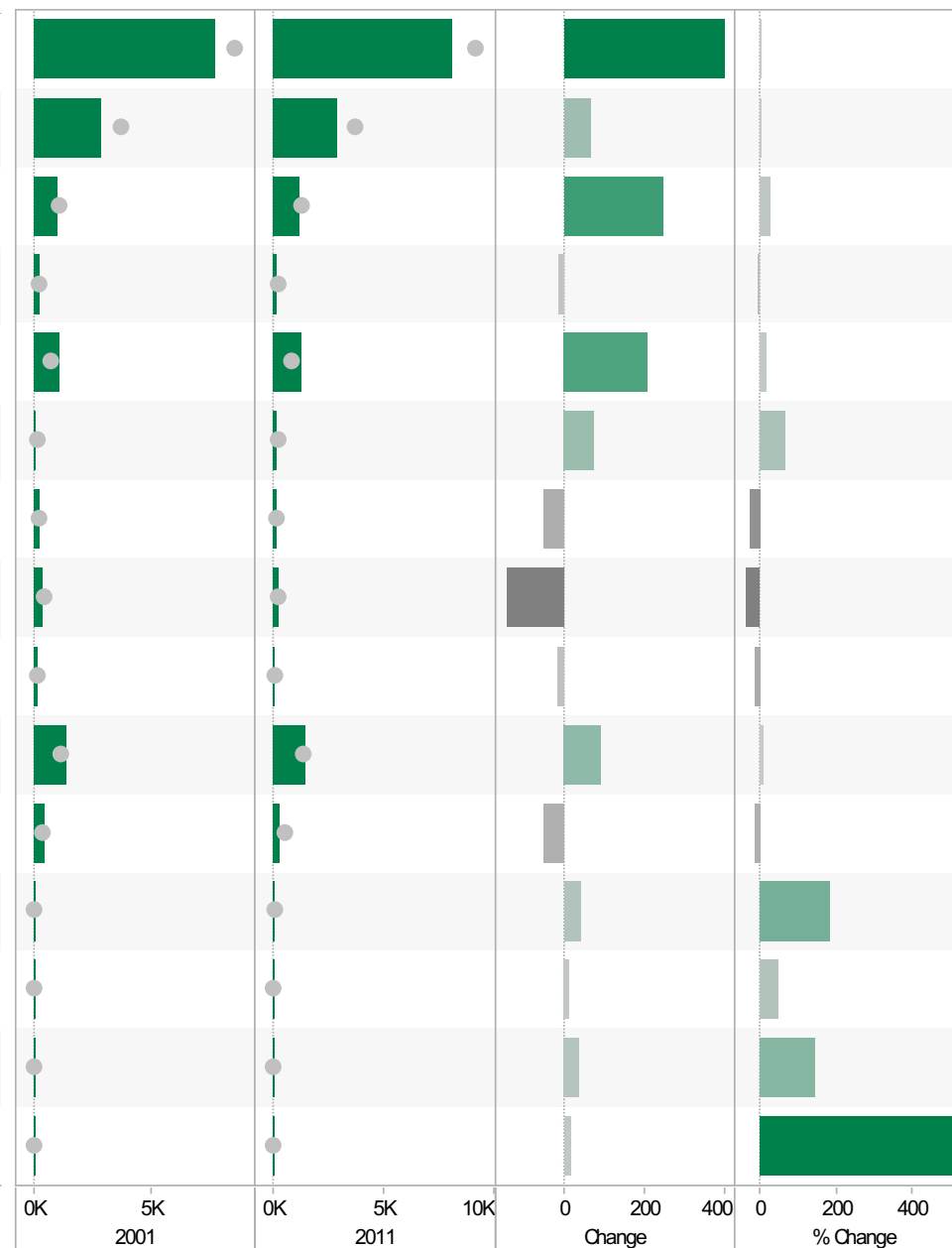


Source: Office for National Statistics (ONS), 2013.
Produced by the Research and Insight Team, Leicestershire County Council.

Launde ED
KS601EW : Economic Activity, 2001-11

Coloured bar - data for Electoral Division
Grey circle - average for all Leicestershire Electoral Divisions

	2001	2011	Change	% Change
All usual residents aged 16 and over	7,672	8,072	400	5
Economically active: Employee: Full-time	2,838	2,904	66	2
Economically active: Employee: Part-time	980	1,226	246	25
Economically active: Full-time student	206	193	-13	-6
Economically active: Self-employed	1,075	1,284	209	19
Economically active: Unemployed	111	184	73	66
Economically inactive: Long-term sick or disabled	196	142	-54	-28
Economically inactive: Looking after home or family	393	246	-147	-37
Economically inactive: Other	124	105	-19	-15
Economically inactive: Retired	1,349	1,440	91	7
Economically inactive: Student (including full-time students)	400	348	-52	-13
Long-term unemployed	21	60	39	186
Unemployed: Age 16 to 24	24	36	12	50
Unemployed: Age 50 and over	24	59	35	146
Unemployed: Never worked	3	19	16	533

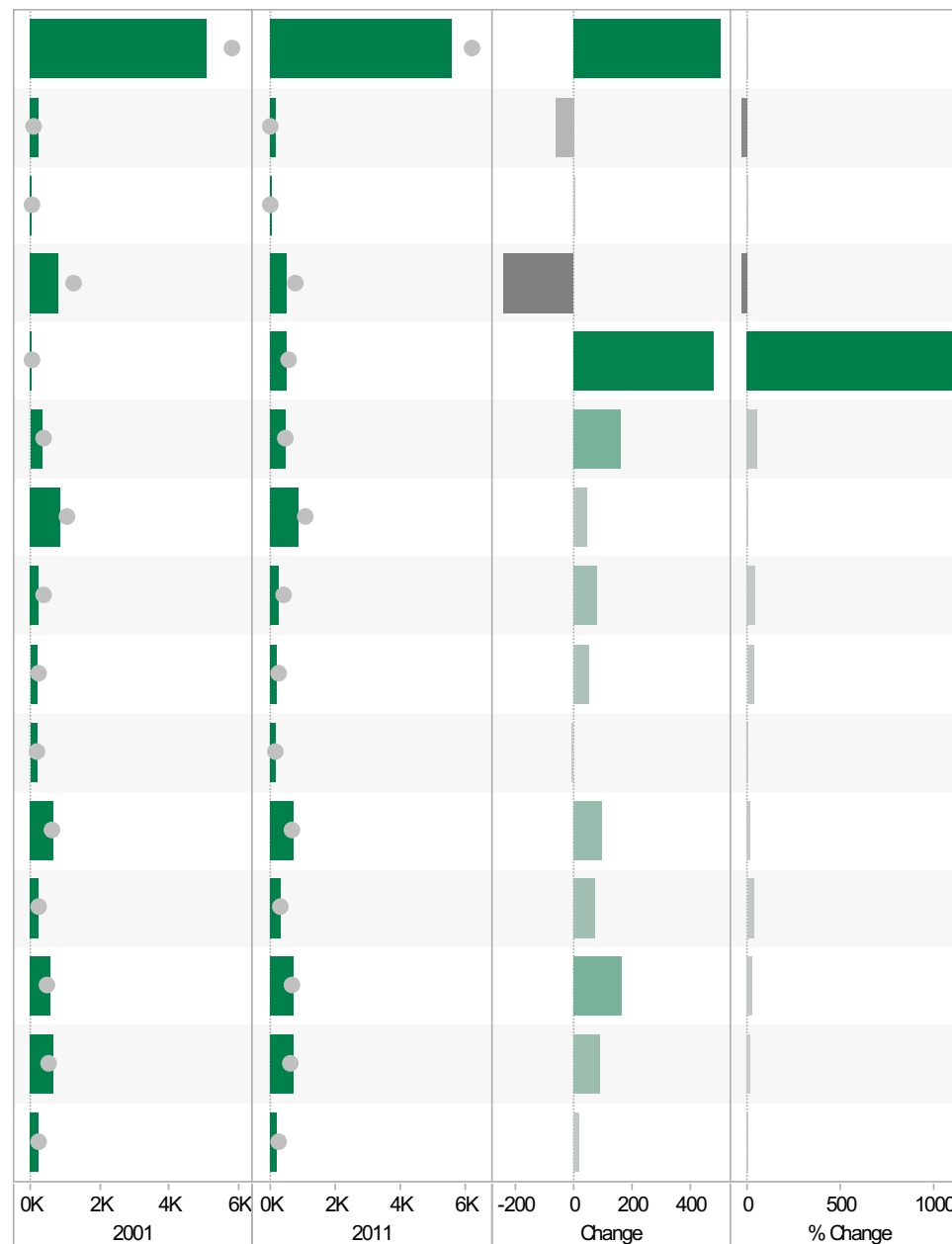


Source: Office for National Statistics (ONS), 2013.
 Produced by the Research and Insight Team, Leicestershire County Council.

Launde ED
KS605EW : Industry, 2001-11

Coloured bar - data for Electoral Division
Grey circle - average for all Leicestershire Electoral Divisions

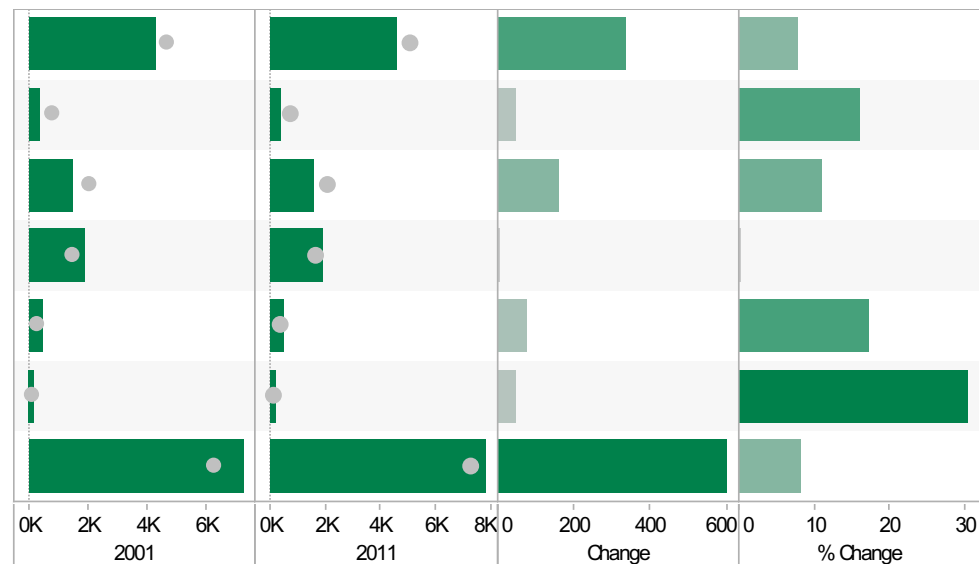
	2001	2011	Change	% Change
All usual residents aged 16 and over in employment	5,065	5,568	503	10
A Agriculture, forestry and fishing	241	177	-64	-27
B Mining and quarrying	3	3	0	0
C Manufacturing	789	546	-243	-31
D, F Electricity, gas, steam, air conditioning supply, water and sewerage	43	527	484	1,126
F Construction	328	492	164	50
G Wholesale and retail trade; repair of motor vehicles and motor cycles	834	879	45	5
H, J Transport, storage, information and communication	199	280	81	41
I Accommodation and food service activities	159	214	55	35
K Financial and insurance activities	193	191	-2	-1
L, M, N Real estate activities Professional, scientific and technical activities Administrative and support service activities	630	726	96	15
O Public administration and defence; compulsory social security	224	302	78	35
P Education	560	725	165	29
Q Human health and social work activities	639	730	91	14
R, S, T, U Other	223	240	17	8



Source: Office for National Statistics (ONS), 2013.
Produced by the Research and Insight Team, Leicestershire County Council.

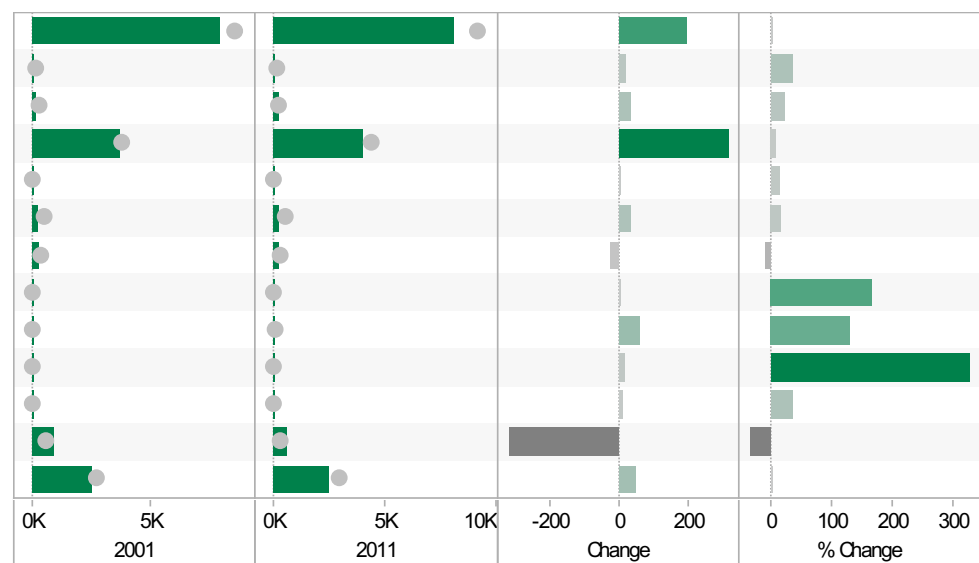
**Launde ED
KS404EW : Car and Van Availability, 2001-11**

	2001	2011	Change	% Change
All Households	4,249	4,587	338	8
No Cars or Vans in Household	308	358	50	16
1 Car or Van in Household	1,455	1,616	161	11
2 Cars or Vans in Household	1,886	1,889	3	0
3 Cars or Vans in Household	446	523	77	17
4 or More Cars or Vans in Household	154	201	47	31
All Cars or Vans in the Area	7,261	7,864	603	8



**Launde ED
QS701EW : Method of Travel to Work, 2001-11**

	2001	2011	Change	% Change
All Usual Residents Aged 16 to 74	7,877	8,072	195	2
Bicycle	53	72	19	36
Bus, Minibus or Coach	154	189	35	23
Driving a Car or Van	3,726	4,040	314	8
Motorcycle, Scooter or Moped	39	44	5	13
On Foot	224	258	34	15
Passenger in a Car or Van	250	225	-25	-10
Taxi	3	8	5	167
Train	45	103	58	129
Underground, Metro, Light Rail, Tram	4	17	13	325
Other Method of Travel to Work	22	30	8	36
Work Mainly at or From Home	900	582	-318	-35
Not in Employment	2,457	2,504	47	2



Source: Office for National Statistics (ONS), 2013.
Produced by the Research and Insight Team, Leicestershire County Council.

If you require information contained in this leaflet in another version e.g. large print, Braille, tape or alternative language please telephone: 0116 305 6803, Fax: 0116 305 7271 or Minicom: 0116 305 6160.

ਜੇ ਆਪ ਆ ਮਾਭਿਨੀ ਆਪਨੀ ਆਧਾਮਾਂ ਸਮਝਵਾਮਾਂ ਥੋੜੀ ਮਦਦ ਈਝਤਾਂ ਡੋ ਤੋ 0116 305 6803 ਨੰਬਰ ਪਰ ਝੋਨ ਕਰਥੋ ਅਨੇ ਅਮੇ ਆਪਨੇ ਮਦਦ ਕਰਵਾ ਅਵਥਾ ਕਰੀਥੁੰ.

ਜੇਕਰ ਤੁਹਾਨੂੰ ਇਸ ਜਾਣਕਾਰੀ ਨੂੰ ਸਮਝਣ ਵਿਚ ਕੁਝ ਮਦਦ ਚਾਹੀਦੀ ਹੈ ਤਾਂ ਕਿਰਪਾ ਕਰਕੇ 0116 305 6803 ਨੰਬਰ ਤੇ ਫੋਨ ਕਰੋ ਅਤੇ ਅਸੀਂ ਤੁਹਾਡੀ ਮਦਦ ਲਈ ਕਿਸੇ ਦਾ ਪ੍ਰਬੰਧ ਕਰ ਦਵਾਂਗੇ।

এই তথ্য নিজের ভাষায় বুঝার জন্য আপনার যদি কোন সাহায্যের প্রয়োজন হয়, তবে 0116 305 6803 এই নম্বরে ফোন করলে আমরা উপযুক্ত ব্যক্তির ব্যবস্থা করবো।

اگر آپ کو یہ معلومات سمجھنے میں کچھ مدد درکار ہے تو براہ مہربانی اس نمبر پر کال کریں اور ہم آپ کی مدد کے لئے کسی کا انتظام کر دیں گے۔ 0116 305 6803

假如閣下需要幫助，用你的語言去明白這些資訊，請致電 0116 305 6803，我們會安排有關人員為你提供幫助。

Jeżeli potrzebujesz pomocy w zrozumieniu tej informacji w Twoim języku, zadzwoń pod numer 0116 305 6803, a my Ci dopomożemy.

Research & Insight Team
Strategy, Partnerships & Communities
Chief Executive's Department
Leicestershire County Council
County Hall
Glenfield
Leicester
LE3 8RA

ri@leics.gov.uk
www.lsr-online.org