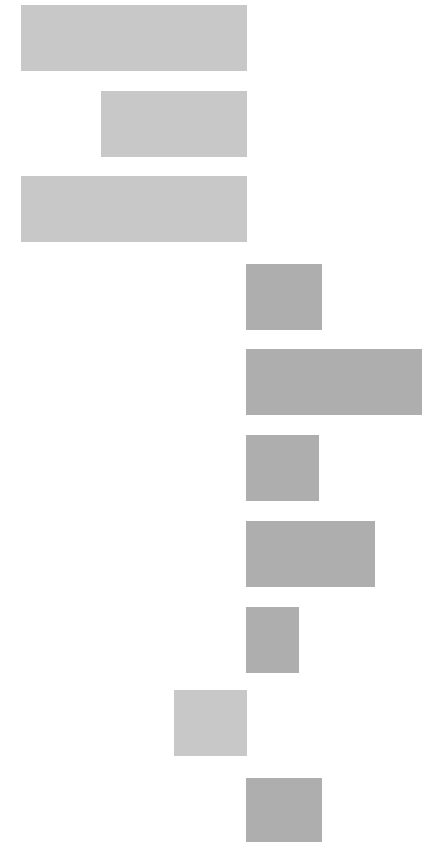


Loughborough East Electoral Division

2011 Census Key Statistics

Alex Lea
May 2013

Research and Insight Team
Leicestershire County Council



Alex Lea

Research & Insight Manager

Research & Insight Team
Strategy, Partnerships & Communities
Leicestershire County Council
County Hall
Glenfield
Leicester LE3 8RB

Tel 0116 305 6803

Email alex.lea@leics.gov.uk

Produced by the Research and Insight Team at Leicestershire County Council.

Whilst every effort has been made to ensure the accuracy of the information contained within this report, Leicestershire County Council cannot be held responsible for any errors or omission relating to the data contained within the report.

CONTENTS

Introduction

About this Report	4
2011 Census	4
Data	5
Census Geography	5
Indicator Changes 2001-11	6

Population

KS101EW - Usual Resident Population	7
KS102EW - Age Structure	7

Households

KS105EW - Household Composition	8
KS402EW - Tenure	9

Health and Caring

KS301EW - Health and Provision of Unpaid Care	9
-----------------------------------------------	---

Ethnicity

KS201EW - Ethnic Group	10
------------------------	----

Economy

KS601EW - Economic Activity	11
KS605EW - Industry	12

Transport

KS404EW - Car and Van Availability	13
QS701EW- Method of Travel to Work	13

INTRODUCTION

ABOUT THIS REPORT

This report provides a broad overview of the 2011 Census Key Statistics data, released by the Office for National Statistics on 30th January 2013, as part of the Second Release. This report summarises a selection of key headline datasets of this release for Leicestershire Electoral Divisions (EDs).

The Research and Insight Team at Leicestershire County Council has used data from the Second release to create an interactive Tableau dashboard containing 32 datasets covering the following geographies:

- England
- East Midlands
- East Midlands counties . Including Leicestershire
- Leicester City and Rutland Unitary Authorities
- Leicestershire districts

In addition, a headline report covers the results for Leicestershire and the seven districts that make up the county. The dashboard and report are available at the following links:

Census 2011 Key Statistics Dashboard

<http://public.tableausoftware.com/views/LAKeyStatsDashboard/Dashboard>

May 2013

Census 2011 Key Statistics Headline Report

http://www.lsr-online.org/reports/census_2011_key_statistics_headline_report/download/1/Census%202011%20Second%20Release%20FINAL.pdf

2011 CENSUS

Census statistics help paint a picture of the nation and how we live. They provide a detailed snapshot of the population and its characteristics, and underpin funding allocation to provide public services.¹ Data from the 2011 Census is made available at a variety of different levels of geography and in various releases.

The Key Statistics data covers a broad range of socio-economic topics, including data on ethnicity, health and employment. Each Key Statistic dataset is referred to by its unique three-digit code with the 'KS' prefix to denote a Key statistic (e.g. KS101). These are used throughout the report.

A full list of the 35 Key Statistics data tables are available here:

<http://www.ons.gov.uk/ons/publications/re-reference-tables.html?edition=tcm%3A77-286262>

¹ Office for National Statistics (ONS), 2013.

Further results from the census will be released throughout 2013, for more information, please visit:

<http://www.lsr-online.org/census-2011.html>

More information on the 2011 Census can be found here:

<http://www.ons.gov.uk/ons/guide-method/census/2011/index.html>

DATA

Data has been compiled for Leicestershire Electoral Divisions, covering the key datasets from the 2011 Census Key statistics.

Figures for 2011 and 2001 are included, along with the overall and percentage change between the two censuses. Data for each indicator is presented in a table and chart.

Population data is displayed in a table, a population pyramid and a chart showing percentage change between 2001 and 2011. All other data is displayed in tables, and charts. Charts for change between 2001 and 2011 are coloured according to the degree of change between the two censuses; grey corresponds to smallest change and green the largest change. A marker indicates the average figure for all Leicestershire Electoral Divisions.

GEOGRAPHY

Maps for all County Council Electoral Divisions can be found here:

http://www.leics.gov.uk/index/your_council/local_democracy/conductofcouncillorsandemployees/electoraldivisionmapsindex/electoraldivisionmaps.htm

As Census data is not made available for Electoral Divisions, smaller areas, called Lower Super Output Areas (LSOAs) have been used as building blocks for the figures included in this report. LSOAs are small parcels of geography, containing a minimum of 1,000 people, a maximum of 3,000 and an average of 1,500. LSOAs were initially developed for the 2001 Census and are used to release a range of neighbourhood-level datasets from various sources. There are 396 LSOAs in Leicestershire.

In some instances, LSOAs do not fit neatly within Electoral Divisions and in these cases, population weighted centroids - representing the 'centre of gravity' for population within an area - have been used in order to assign each LSOA to an Electoral Division. Electoral Divisions that fall within this category are indicated with a (*).

More information on Lower Super Output Areas can be found here:

<http://www.ons.gov.uk/ons/guide-method/geography/beginner-s-guide/census/super-output-areas--soas-/index.html>

INDICATOR CHANGES 2001-11

The following questions were asked in slightly different ways in 2011 compared to 2001. As such, care should be taken when making comparison between years.

KS201EW : Ethnic Group

Asian/Asian British: Chinese
Mixed/multiple ethnic group: Other Mixed
Mixed/multiple ethnic group: White and Asian
Mixed/multiple ethnic group: White and Black African
Mixed/multiple ethnic group: White and Black Caribbean
Other ethnic group: Any other ethnic group
White: English/Welsh/Scottish/Northern Irish/British
White: Other White

KS301EW : Health and Provision of Unpaid Care

Day-to-day activities limited
Day-to-day activities limited: Age 16 to 64
Day-to-day activities not limited
Fair health
Very/ bad Health
Very/ good Health

KS601EW : Economic Activity

All usual residents aged 16 and over
Economically active: Employee: Full-time
Economically active: Employee: Part-time
Economically active: Full-time student

Economically active: Self-employed
Economically active: Unemployed
Economically inactive: Long-term sick or disabled
Economically inactive: Looking after home or family
Economically inactive: Other
Economically inactive: Retired
Economically inactive: Student (including full-time)
Long-term unemployed
Unemployed: Age 50 and over
Unemployed: Never worked

KS605EW : Industry

All usual residents aged 16 and over in employment
A Agriculture, forestry and fishing
B Mining and quarrying
C Manufacturing
D, F Electricity, gas, steam, air conditioning supply etc
F Construction
G Wholesale and retail trade; repair of motor vehicles etc
H, J Transport, storage, information and communication
I Accommodation and food service activities
K Financial and insurance activities
L,M,N Real estate activities Professional, scientific etc
O Public administration and defence etc
P Education
Q Human health and social work activities
R, S, T, U Other

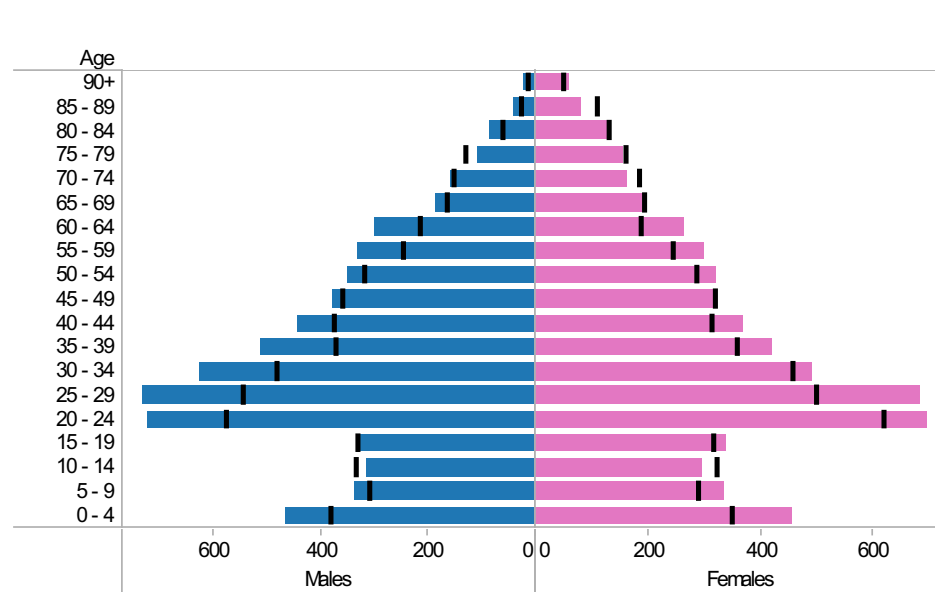
Loughborough East* ED: KS101EW : Usual Resident Population, KS102EW : Age Structure

■ Males
 ■ Females
 ■ Persons

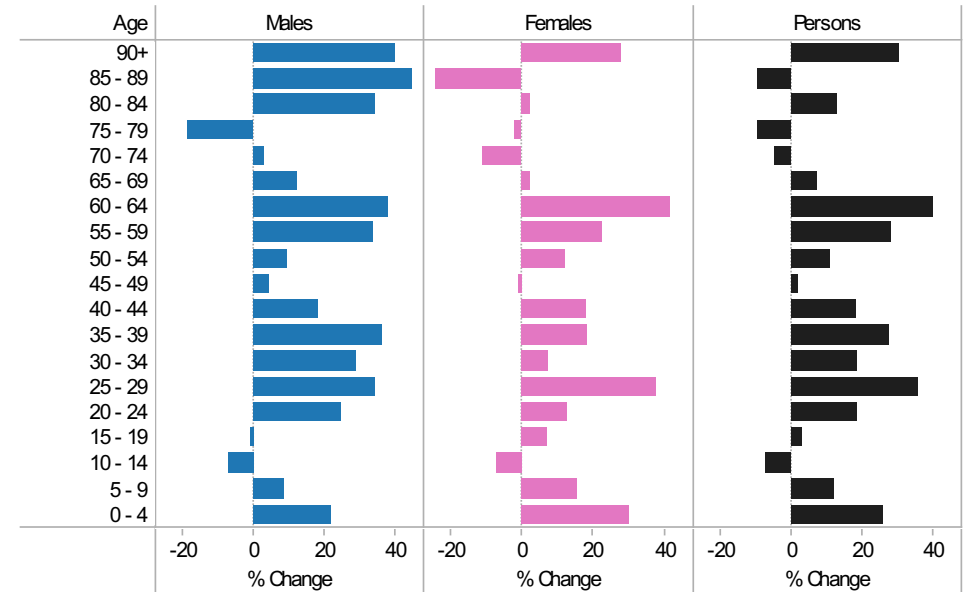
2001-11 Population by sex and quinary age band

Age	Males			Females			Persons		
	2001	2011	Change 2001-11	2001	2011	Change 2001-11	2001	2011	Change 2001-11
90+	15	21	6	47	60	13	62	81	19
85 - 89	29	42	13	107	81	-26	136	123	-13
80 - 84	64	86	22	128	131	3	192	217	25
75 - 79	133	108	-25	159	156	-3	292	264	-28
70 - 74	153	157	4	182	162	-20	335	319	-16
65 - 69	166	187	21	192	196	4	358	383	25
60 - 64	216	299	83	187	265	78	403	564	161
55 - 59	247	331	84	244	299	55	491	630	139
50 - 54	320	350	30	285	320	35	605	670	65
45 - 49	362	378	16	318	314	-4	680	692	12
40 - 44	376	445	69	311	367	56	687	812	125
35 - 39	375	512	137	355	420	65	730	932	202
30 - 34	484	626	142	456	490	34	940	1,116	176
25 - 29	547	734	187	496	684	188	1,043	1,418	375
20 - 24	580	723	143	618	696	78	1,198	1,419	221
15 - 19	332	329	-3	315	337	22	647	666	19
10 - 14	337	313	-24	320	297	-23	657	610	-47
5 - 9	310	337	27	289	334	45	599	671	72
0 - 4	383	467	84	348	454	106	731	921	190
All Ages	5,429	6,445	1,016	5,357	6,063	706	10,786	12,508	1,722

2011 (coloured bars) and 2001 (black marks) population by sex and quinary age age



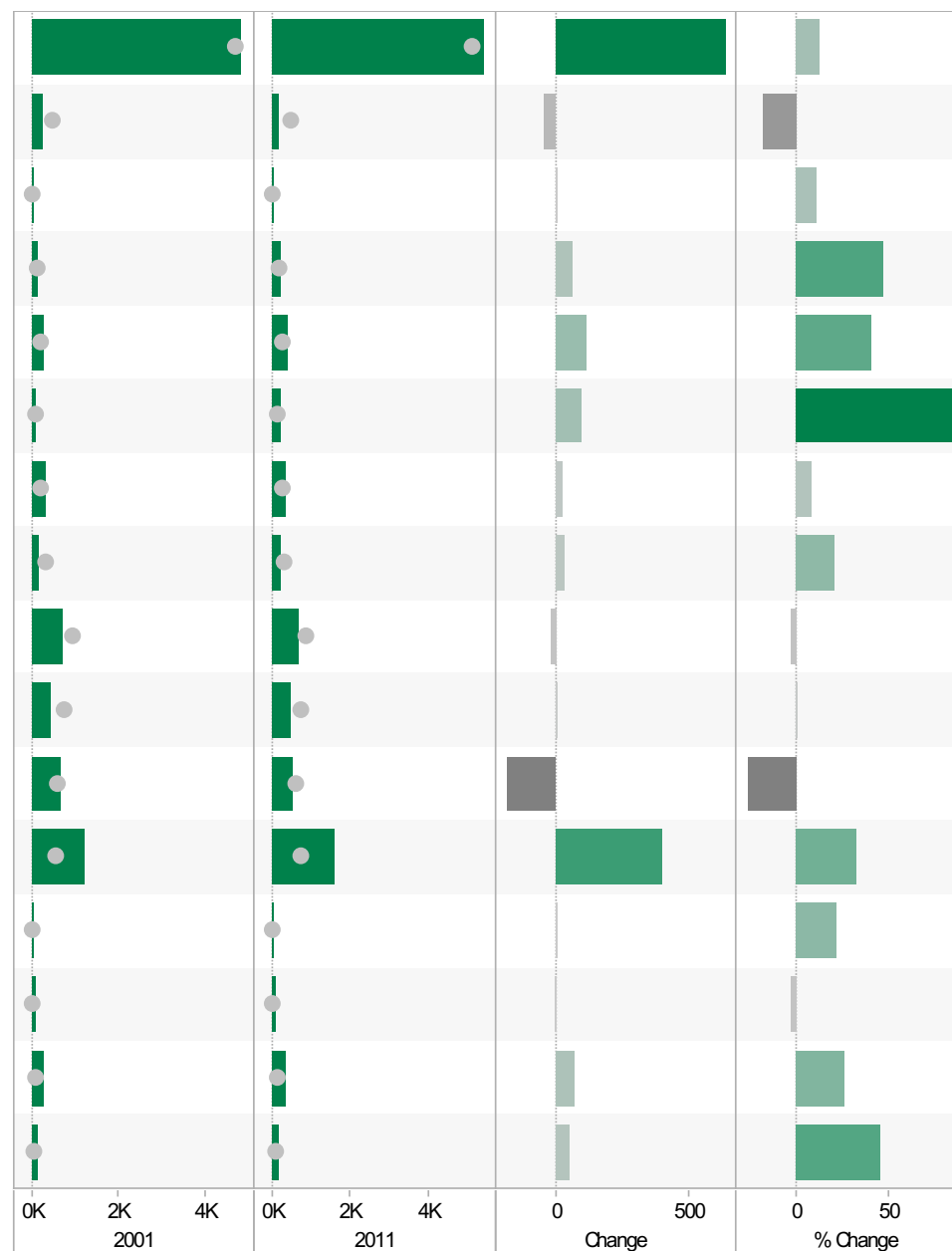
2001-11 Percentage change by sex and quinary age band



Loughborough East* ED KS105EW : Household Composition, 2001-11

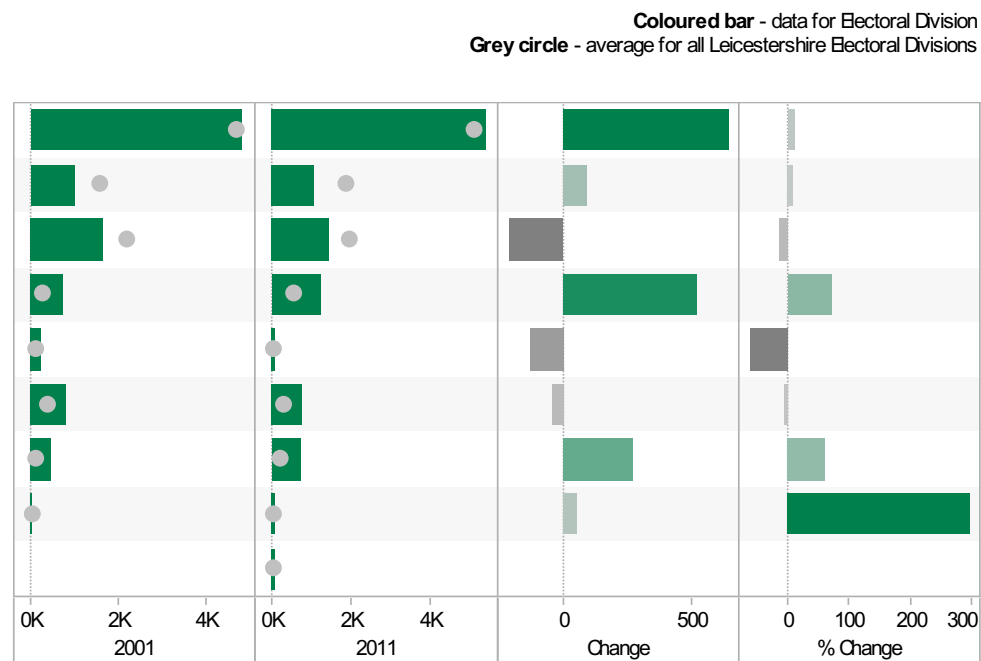
Coloured bar - data for Electoral Division
Grey circle - average for all Leicestershire Electoral Divisions

	2001	2011	Change	% Change
All Households	4,816	5,452	636	13
One Family Only; All Aged 65 and Over	238	196	-42	-18
One Family Only; Cohabiting Couple; All Children Non-Dependent	9	10	1	11
One Family Only; Cohabiting Couple; Dependent Children	138	204	66	48
One Family Only; Cohabiting Couple; No Children	288	406	118	41
One Family Only; Lone Parent; All Children Non-Dependent	107	205	98	92
One Family Only; Lone Parent; Dependent Children	332	359	27	8
One Family Only; Married or Same-Sex Civil Partnership Couple; All Children Non-Dependent	176	213	37	21
One Family Only; Married or Same-Sex Civil Partnership Couple; Dependent Children	695	678	-17	-2
One Family Only; Married or Same-Sex Civil Partnership Couple; No Children	453	460	7	2
One Person Household; Aged 65 and Over	687	504	-183	-27
One Person Household; Other	1,206	1,604	398	33
Other Household Types; All Aged 65 and Over	9	11	2	22
Other Household Types; All Full-Time Students	87	85	-2	-2
Other Household Types; Other	273	345	72	26
Other Household Types; With Dependent Children	118	172	54	46



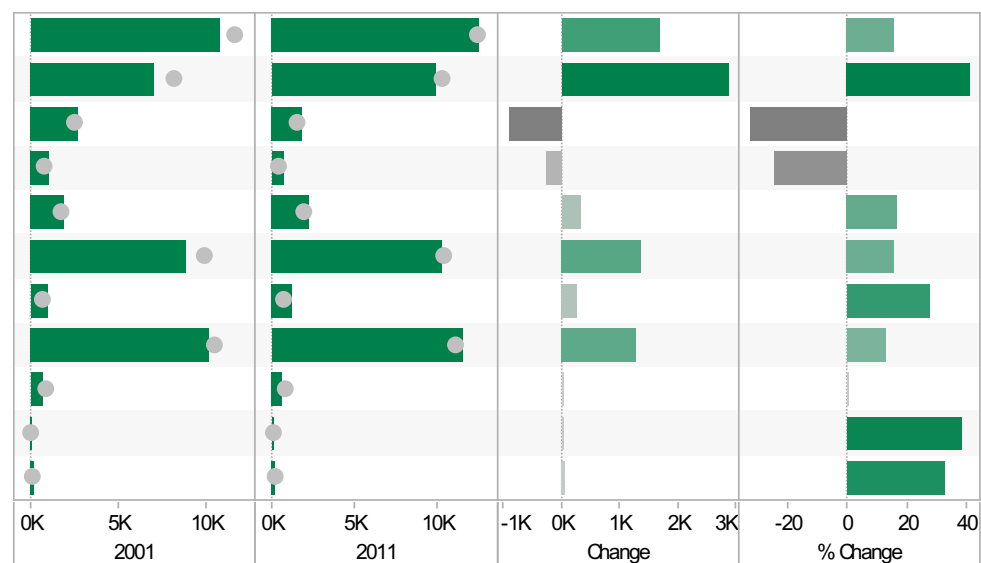
Loughborough East* ED KS402EW: Tenure, 2001-11

	2001	2011	Change	% Change
All Households	4,813	5,452	639	13
Owned; Owned Outright	977	1,072	95	10
Owned; Owned with a Mortgage or Loan	1,651	1,440	-211	-13
Private Rented; Private Landlord or Letting Agency	708	1,229	521	74
Private Rented; Other	211	84	-127	-60
Social Rented; Rented from Council (Local Authority)	814	769	-45	-6
Social Rented; Other	433	701	268	62
Shared Ownership (Part Owned and Part Rented)	19	75	56	295
Living Rent Free		82		



Loughborough East* ED KS301EW: Health and Provision of Unpaid Care, 2001-11

	2001	2011	Change	% Change
All usual residents	10,804	12,508	1,704	16
Very/ good Health	7,001	9,870	2,869	41
Fair health	2,752	1,847	-905	-33
Very/ bad Health	1,051	791	-260	-25
Day-to-day activities limited	1,909	2,234	325	17
Day-to-day activities not limited	8,895	10,274	1,379	16
Day-to-day activities limited a lot: Age 16 to 64	1,015	1,295	280	28
Provides no unpaid care	10,182	11,474	1,292	13
Provides 1 to 19 hours unpaid care a week	642	645	3	0
Provides 20 to 49 hours unpaid care a week	102	141	39	38
Provides 50 or more hours unpaid care a week	187	248	61	33



Loughborough East* ED
KS201EW : Ethnic Group, 2001-11

Coloured bar - data for Electoral Division
 Grey circle - average for all Leicestershire Electoral Divisions

	2001	2011	Change	% Change
All usual residents	10,815	12,508	1,693	16
White: English/Welsh/Scottish/Northern Irish/British	7,523	7,790	267	4
White: Irish	90	68	-22	-24
White: Other White	301	774	473	157
Asian/Asian British: Bangladeshi	1,118	1,601	483	43
Asian/Asian British: Chinese	69	161	92	133
Asian/Asian British: Indian	1,239	1,135	-104	-8
Asian/Asian British: Other Asian	111	262	151	136
Asian/Asian British: Pakistani	22	86	64	291
Black/African/Caribbean/Black British: African	48	175	127	265
Black/African/Caribbean/Black British: Caribbean	19	24	5	26
Black/African/Caribbean/Black British: Other Black	15	8	-7	-47
Mixed/multiple ethnic group: Other Mixed	49	46	-3	-6
Mixed/multiple ethnic group: White and Asian	73	121	48	66
Mixed/multiple ethnic group: White and Black African	15	32	17	113
Mixed/multiple ethnic group: White and Black Caribbean	31	78	47	152
Other ethnic group: Any other ethnic group	92	147	55	60

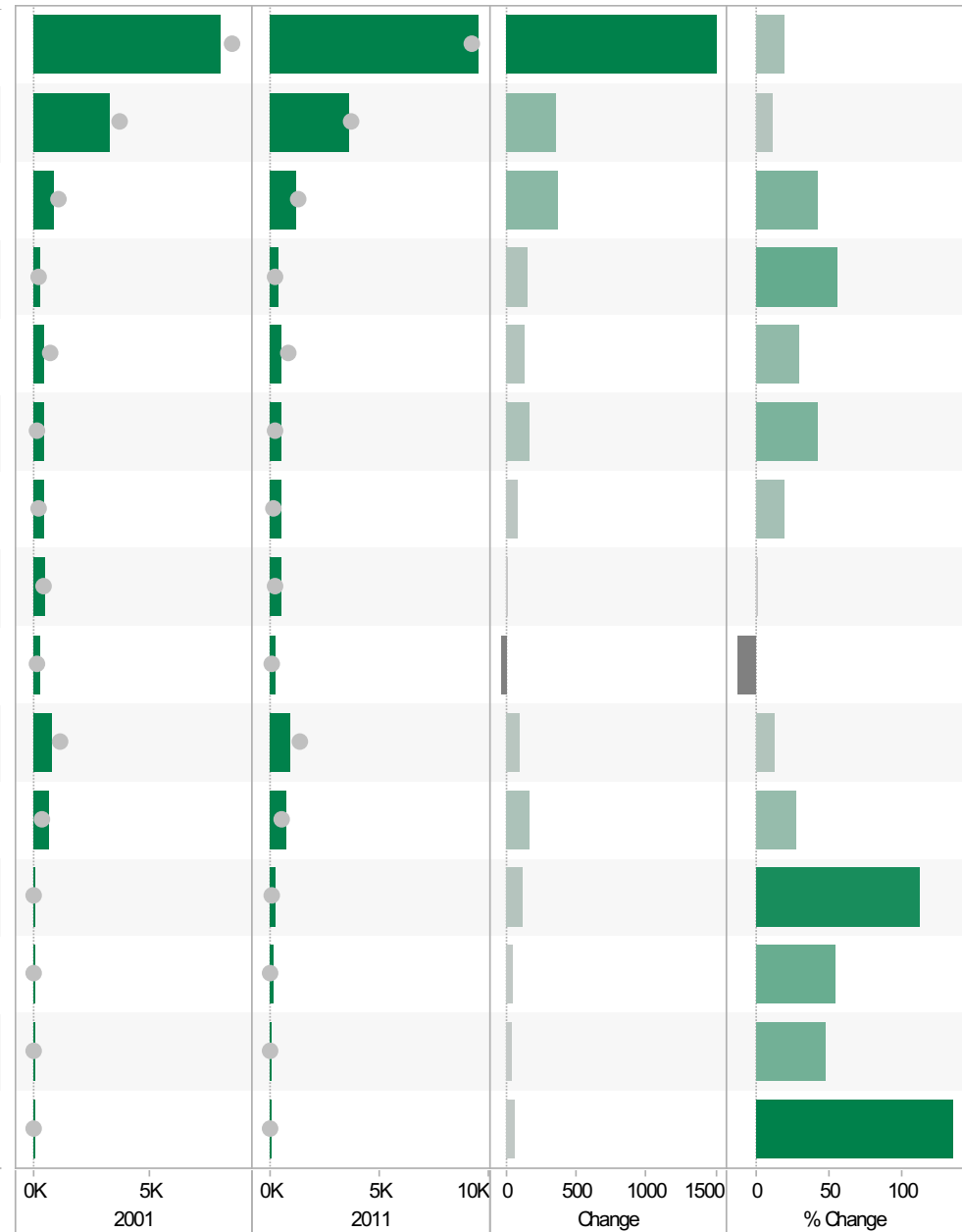


Source: Office for National Statistics (ONS), 2013.
 Produced by the Research and Insight Team, Leicestershire County Council.

Loughborough East* ED
KS601EW : Economic Activity, 2001-11

Coloured bar - data for Electoral Division
Grey circle - average for all Leicestershire Electoral Divisions

	2001	2011	Change	% Change
All usual residents aged 16 and over	8,004	9,501	1,497	19
Economically active: Employee: Full-time	3,276	3,635	359	11
Economically active: Employee: Part-time	890	1,263	373	42
Economically active: Full-time student	273	425	152	56
Economically active: Self-employed	444	575	131	30
Economically active: Unemployed	407	578	171	42
Economically inactive: Long-term sick or disabled	445	529	84	19
Economically inactive: Looking after home or family	525	524	-1	0
Economically inactive: Other	303	262	-41	-14
Economically inactive: Retired	805	904	99	12
Economically inactive: Student (including full-time students)	636	806	170	27
Long-term unemployed	110	233	123	112
Unemployed: Age 16 to 24	97	149	52	54
Unemployed: Age 50 and over	76	112	36	47
Unemployed: Never worked	41	96	55	134

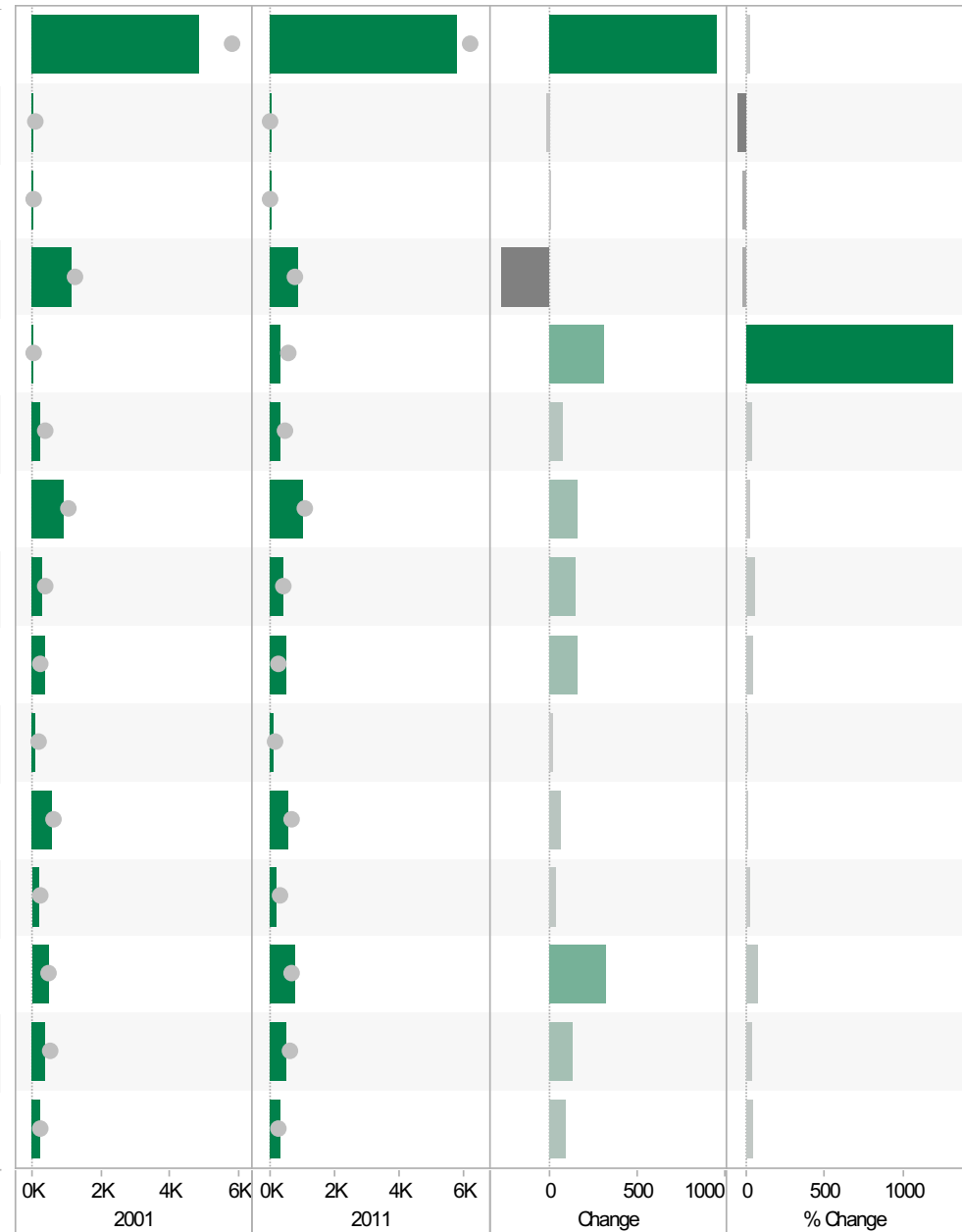


Source: Office for National Statistics (ONS), 2013.
 Produced by the Research and Insight Team, Leicestershire County Council.

Loughborough East* ED
KS605EW : Industry, 2001-11

Coloured bar - data for Electoral Division
Grey circle - average for all Leicestershire Electoral Divisions

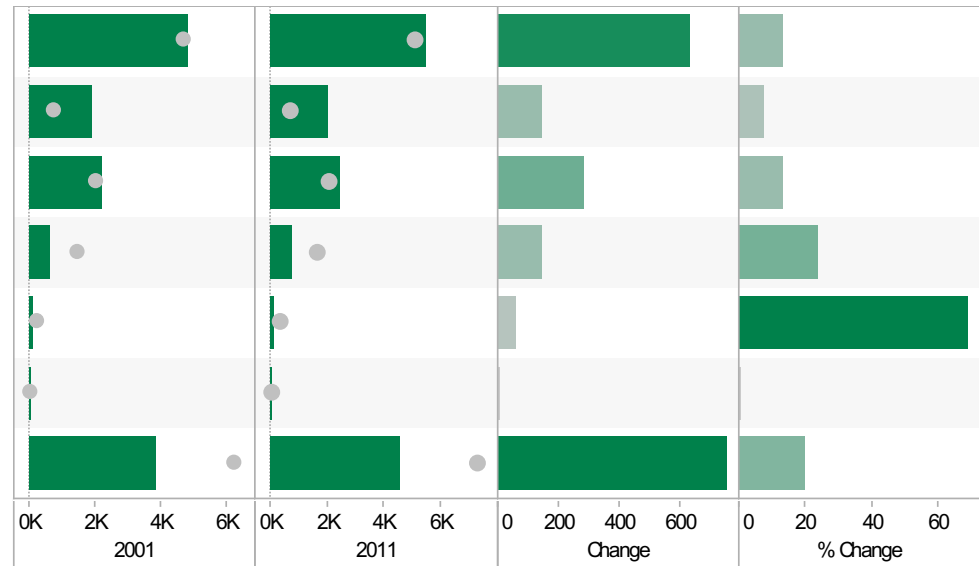
	2001	2011	Change	% Change
All usual residents aged 16 and over in employment	4,859	5,809	950	20
A Agriculture, forestry and fishing	31	13	-18	-58
B Mining and quarrying	17	13	-4	-24
C Manufacturing	1,157	876	-281	-24
D, F Electricity, gas, steam, air conditioning supply, water and sewerage	24	339	315	1,313
F Construction	227	300	73	32
G Wholesale and retail trade; repair of motor vehicles and motor cycles	879	1,034	155	18
H, J Transport, storage, information and communication	279	426	147	53
I Accommodation and food service activities	383	538	155	40
K Financial and insurance activities	90	103	13	14
L, M, N Real estate activities Professional, scientific and technical activities Administrative and support service activities	535	599	64	12
O Public administration and defence; compulsory social security	181	220	39	22
P Education	460	782	322	70
Q Human health and social work activities	385	520	135	35
R, S, T, U Other	211	305	94	45



Source: Office for National Statistics (ONS), 2013.
 Produced by the Research and Insight Team, Leicestershire County Council.

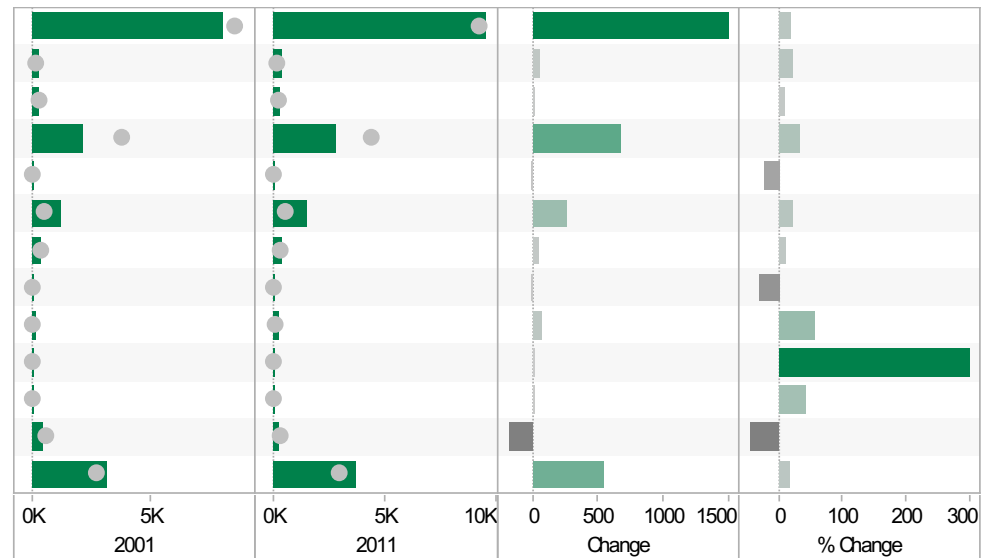
Loughborough East* ED
KS404EW : Car and Van Availability, 2001-11

	2001	2011	Change	% Change
All Households	4,815	5,452	637	13
No Cars or Vans in Household	1,896	2,041	145	8
1 Car or Van in Household	2,180	2,466	286	13
2 Cars or Vans in Household	619	765	146	24
3 Cars or Vans in Household	87	147	60	69
4 or More Cars or Vans in Household	33	33	0	0
All Cars or Vans in the Area	3,819	4,578	759	20



Loughborough East* ED
QS701EW : Method of Travel to Work, 2001-11

	2001	2011	Change	% Change
All Usual Residents Aged 16 to 74	8,006	9,501	1,495	19
Bicycle	284	344	60	21
Bus, Minibus or Coach	264	286	22	8
Driving a Car or Van	2,129	2,803	674	32
Motorcycle, Scooter or Moped	53	41	-12	-23
On Foot	1,211	1,473	262	22
Passenger in a Car or Van	325	367	42	13
Taxi	28	19	-9	-32
Train	135	211	76	56
Underground, Metro, Light Rail, Tram	3	12	9	300
Other Method of Travel to Work	25	36	11	44
Work Mainly at or From Home	398	217	-181	-45
Not in Employment	3,151	3,692	541	17



Source: Office for National Statistics (ONS), 2013.
 Produced by the Research and Insight Team, Leicestershire County Council.

If you require information contained in this leaflet in another version e.g. large print, Braille, tape or alternative language please telephone: 0116 305 6803, Fax: 0116 305 7271 or Minicom: 0116 305 6160.

ਜੇ ਆਪ ਆ ਮਾਭਿਨੀ ਆਪਨੀ ਆਧਾਮਾਂ ਸਮਝਵਾਮਾਂ ਥੋੜੀ ਮਦਦ ਈਝਤਾਂ ਡੋ ਤੋ 0116 305 6803 ਨੰਬਰ ਪਰ ਝੋਨ ਕਰਥੋ ਅਨੇ ਅਮੇ ਆਪਨੇ ਮਦਦ ਕਰਵਾ ਅਵਥਾ ਕਰੀਥੁੰ.

ਜੇਕਰ ਤੁਹਾਨੂੰ ਇਸ ਜਾਣਕਾਰੀ ਨੂੰ ਸਮਝਣ ਵਿਚ ਕੁਝ ਮਦਦ ਚਾਹੀਦੀ ਹੈ ਤਾਂ ਕਿਰਪਾ ਕਰਕੇ 0116 305 6803 ਨੰਬਰ ਤੇ ਫ਼ੋਨ ਕਰੋ ਅਤੇ ਅਸੀਂ ਤੁਹਾਡੀ ਮਦਦ ਲਈ ਕਿਸੇ ਦਾ ਪ੍ਰਬੰਧ ਕਰ ਦਵਾਂਗੇ।

এই তথ্য নিজের ভাষায় বুঝার জন্য আপনার যদি কোন সাহায্যের প্রয়োজন হয়, তবে 0116 305 6803 এই নম্বরে ফোন করলে আমরা উপযুক্ত ব্যক্তির ব্যবস্থা করবো।

اگر آپ کو یہ معلومات سمجھنے میں کچھ مدد درکار ہے تو براہ مہربانی اس نمبر پر کال کریں اور ہم آپ کی مدد کے لئے کسی کا انتظام کر دیں گے۔ 0116 305 6803

假如閣下需要幫助，用你的語言去明白這些資訊，請致電 0116 305 6803，我們會安排有關人員為你提供幫助。

Jeżeli potrzebujesz pomocy w zrozumieniu tej informacji w Twoim języku, zadzwoń pod numer 0116 305 6803, a my Ci dopomożemy.

Research & Insight Team
Strategy, Partnerships & Communities
Chief Executive's Department
Leicestershire County Council
County Hall
Glenfield
Leicester
LE3 8RA

ri@leics.gov.uk
www.lsr-online.org