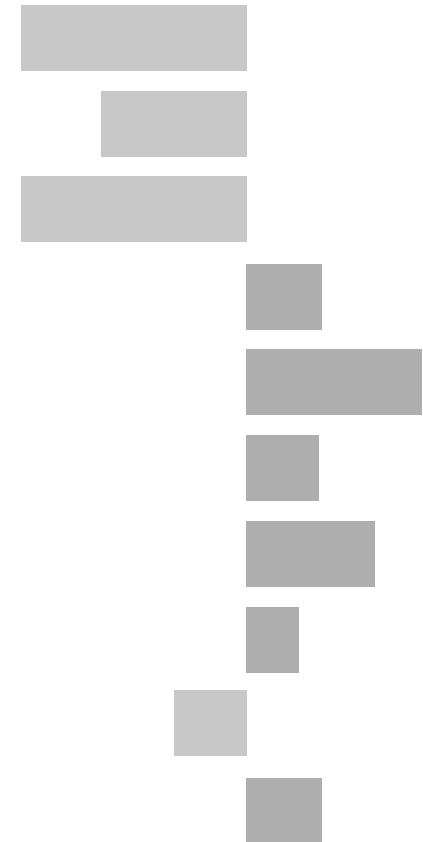


# Loughborough North West Electoral Division

## 2011 Census Key Statistics

Alex Lea  
May 2013

Research and Insight Team  
Leicestershire County Council



**Alex Lea**

Research & Insight Manager

Research & Insight Team  
Strategy, Partnerships & Communities  
Leicestershire County Council  
County Hall  
Glenfield  
Leicester LE3 8RB

Tel 0116 305 6803

Email [alex.lea@leics.gov.uk](mailto:alex.lea@leics.gov.uk)

Produced by the Research and Insight Team at Leicestershire County Council.

Whilst every effort has been made to ensure the accuracy of the information contained within this report, Leicestershire County Council cannot be held responsible for any errors or omission relating to the data contained within the report.

## CONTENTS

### Introduction

About this Report	4
2011 Census	4
Data	5
Census Geography	5
Indicator Changes 2001-11	6

### Population

KS101EW - Usual Resident Population	7
KS102EW - Age Structure	7

### Households

KS105EW - Household Composition	8
KS402EW - Tenure	9

### Health and Caring

KS301EW - Health and Provision of Unpaid Care	9
---	---

### Ethnicity

KS201EW - Ethnic Group	10
------------------------	----

### Economy

KS601EW - Economic Activity	11
KS605EW - Industry	12

### Transport

KS404EW - Car and Van Availability	13
QS701EW- Method of Travel to Work	13

## INTRODUCTION

### ABOUT THIS REPORT

This report provides a broad overview of the 2011 Census Key Statistics data, released by the Office for National Statistics on 30th January 2013, as part of the Second Release. This report summarises a selection of key headline datasets of this release for Leicestershire Electoral Divisions (EDs).

The Research and Insight Team at Leicestershire County Council has used data from the Second release to create an interactive Tableau dashboard containing 32 datasets covering the following geographies:

- England
- East Midlands
- East Midlands counties . Including Leicestershire
- Leicester City and Rutland Unitary Authorities
- Leicestershire districts

In addition, a headline report covers the results for Leicestershire and the seven districts that make up the county. The dashboard and report are available at the following links:

#### Census 2011 Key Statistics Dashboard

<http://public.tableausoftware.com/views/LAKeyStatsDashboard/Dashboard>

May 2013

#### Census 2011 Key Statistics Headline Report

[http://www.lsr-online.org/reports/census\\_2011\\_key\\_statistics\\_headline\\_report/download/1/Census%202011%20Second%20Release%20FINAL.pdf](http://www.lsr-online.org/reports/census_2011_key_statistics_headline_report/download/1/Census%202011%20Second%20Release%20FINAL.pdf)

### 2011 CENSUS

Census statistics help paint a picture of the nation and how we live. They provide a detailed snapshot of the population and its characteristics, and underpin funding allocation to provide public services.<sup>1</sup> Data from the 2011 Census is made available at a variety of different levels of geography and in various releases.

The Key Statistics data covers a broad range of socio-economic topics, including data on ethnicity, health and employment. Each Key Statistic dataset is referred to by its unique three-digit code with the 'KS' prefix to denote a Key statistic (e.g. KS101). These are used throughout the report.

A full list of the 35 Key Statistics data tables are available here:

<http://www.ons.gov.uk/ons/publications/re-reference-tables.html?edition=tcm%3A77-286262>

<sup>1</sup> Office for National Statistics (ONS), 2013.

Further results from the census will be released throughout 2013, for more information, please visit:

<http://www.lsr-online.org/census-2011.html>

More information on the 2011 Census can be found here:

<http://www.ons.gov.uk/ons/guide-method/census/2011/index.html>

## DATA

Data has been compiled for Leicestershire Electoral Divisions, covering the key datasets from the 2011 Census Key statistics.

Figures for 2011 and 2001 are included, along with the overall and percentage change between the two censuses. Data for each indicator is presented in a table and chart.

Population data is displayed in a table, a population pyramid and a chart showing percentage change between 2001 and 2011. All other data is displayed in tables, and charts. Charts for change between 2001 and 2011 are coloured according to the degree of change between the two censuses; grey corresponds to smallest change and green the largest change. A marker indicates the average figure for all Leicestershire Electoral Divisions.

## GEOGRAPHY

Maps for all County Council Electoral Divisions can be found here:

[http://www.leics.gov.uk/index/your\\_council/local\\_democracy/conductofcouncillorsandemployees/electoraldivisionmapsindex/electoraldivisionmaps.htm](http://www.leics.gov.uk/index/your_council/local_democracy/conductofcouncillorsandemployees/electoraldivisionmapsindex/electoraldivisionmaps.htm)

As Census data is not made available for Electoral Divisions, smaller areas, called Lower Super Output Areas (LSOAs) have been used as building blocks for the figures included in this report. LSOAs are small parcels of geography, containing a minimum of 1,000 people, a maximum of 3,000 and an average of 1,500. LSOAs were initially developed for the 2001 Census and are used to release a range of neighbourhood-level datasets from various sources. There are 396 LSOAs in Leicestershire.

In some instances, LSOAs do not fit neatly within Electoral Divisions and in these cases, population weighted centroids - representing the 'centre of gravity' for population within an area - have been used in order to assign each LSOA to an Electoral Division. Electoral Divisions that fall within this category are indicated with a (\*).

More information on Lower Super Output Areas can be found here:

<http://www.ons.gov.uk/ons/guide-method/geography/beginner-s-guide/census/super-output-areas--soas-/index.html>

## INDICATOR CHANGES 2001-11

The following questions were asked in slightly different ways in 2011 compared to 2001. As such, care should be taken when making comparison between years.

### **KS201EW : Ethnic Group**

Asian/Asian British: Chinese  
Mixed/multiple ethnic group: Other Mixed  
Mixed/multiple ethnic group: White and Asian  
Mixed/multiple ethnic group: White and Black African  
Mixed/multiple ethnic group: White and Black Caribbean  
Other ethnic group: Any other ethnic group  
White: English/Welsh/Scottish/Northern Irish/British  
White: Other White

### **KS301EW : Health and Provision of Unpaid Care**

Day-to-day activities limited  
Day-to-day activities limited: Age 16 to 64  
Day-to-day activities not limited  
Fair health  
Very/ bad Health  
Very/ good Health

### **KS601EW : Economic Activity**

All usual residents aged 16 and over  
Economically active: Employee: Full-time  
Economically active: Employee: Part-time  
Economically active: Full-time student

Economically active: Self-employed  
Economically active: Unemployed  
Economically inactive: Long-term sick or disabled  
Economically inactive: Looking after home or family  
Economically inactive: Other  
Economically inactive: Retired  
Economically inactive: Student (including full-time)  
Long-term unemployed  
Unemployed: Age 50 and over  
Unemployed: Never worked

### **KS605EW : Industry**

All usual residents aged 16 and over in employment  
A Agriculture, forestry and fishing  
B Mining and quarrying  
C Manufacturing  
D, F Electricity, gas, steam, air conditioning supply etc  
F Construction  
G Wholesale and retail trade; repair of motor vehicles etc  
H, J Transport, storage, information and communication  
I Accommodation and food service activities  
K Financial and insurance activities  
L,M,N Real estate activities Professional, scientific etc  
O Public administration and defence etc  
P Education  
Q Human health and social work activities  
R, S, T, U Other

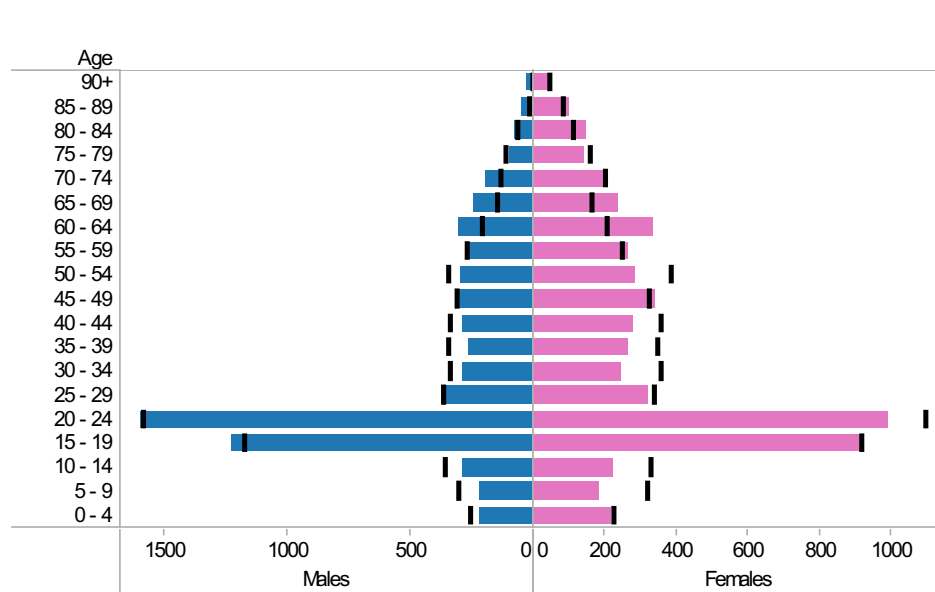
# Loughborough North West ED: KS101EW : Usual Resident Population, KS102EW : Age Structure

■ Males
 ■ Females
 ■ Persons

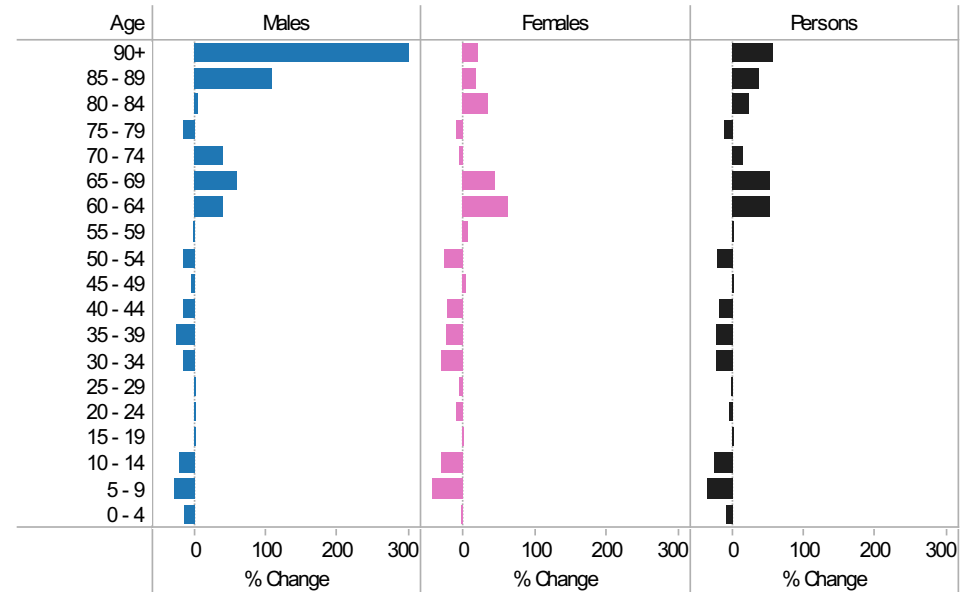
2001-11 Population by sex and quinary age band

Age	Males			Females			Persons		
	2001	2011	Change 2001-11	2001	2011	Change 2001-11	2001	2011	Change 2001-11
90+	6	24	18	41	50	9	47	74	27
85 - 89	22	46	24	81	97	16	103	143	40
80 - 84	69	73	4	108	146	38	177	219	42
75 - 79	117	98	-19	156	143	-13	273	241	-32
70 - 74	139	194	55	200	193	-7	339	387	48
65 - 69	150	241	91	162	235	73	312	476	164
60 - 64	215	302	87	203	333	130	418	635	217
55 - 59	273	268	-5	246	264	18	519	532	13
50 - 54	348	294	-54	379	283	-96	727	577	-150
45 - 49	312	299	-13	318	337	19	630	636	6
40 - 44	343	288	-55	351	280	-71	694	568	-126
35 - 39	347	262	-85	344	264	-80	691	526	-165
30 - 34	341	288	-53	352	245	-107	693	533	-160
25 - 29	372	371	-1	335	321	-14	707	692	-15
20 - 24	1,592	1,598	6	1,094	990	-104	2,686	2,588	-98
15 - 19	1,181	1,226	45	914	914	0	2,095	2,140	45
10 - 14	363	285	-78	325	223	-102	688	508	-180
5 - 9	305	219	-86	316	185	-131	621	404	-217
0 - 4	257	221	-36	219	216	-3	476	437	-39
All Ages	6,752	6,597	-155	6,144	5,719	-425	12,896	12,316	-580

2011 (coloured bars) and 2001 (black marks) population by sex and quinary age

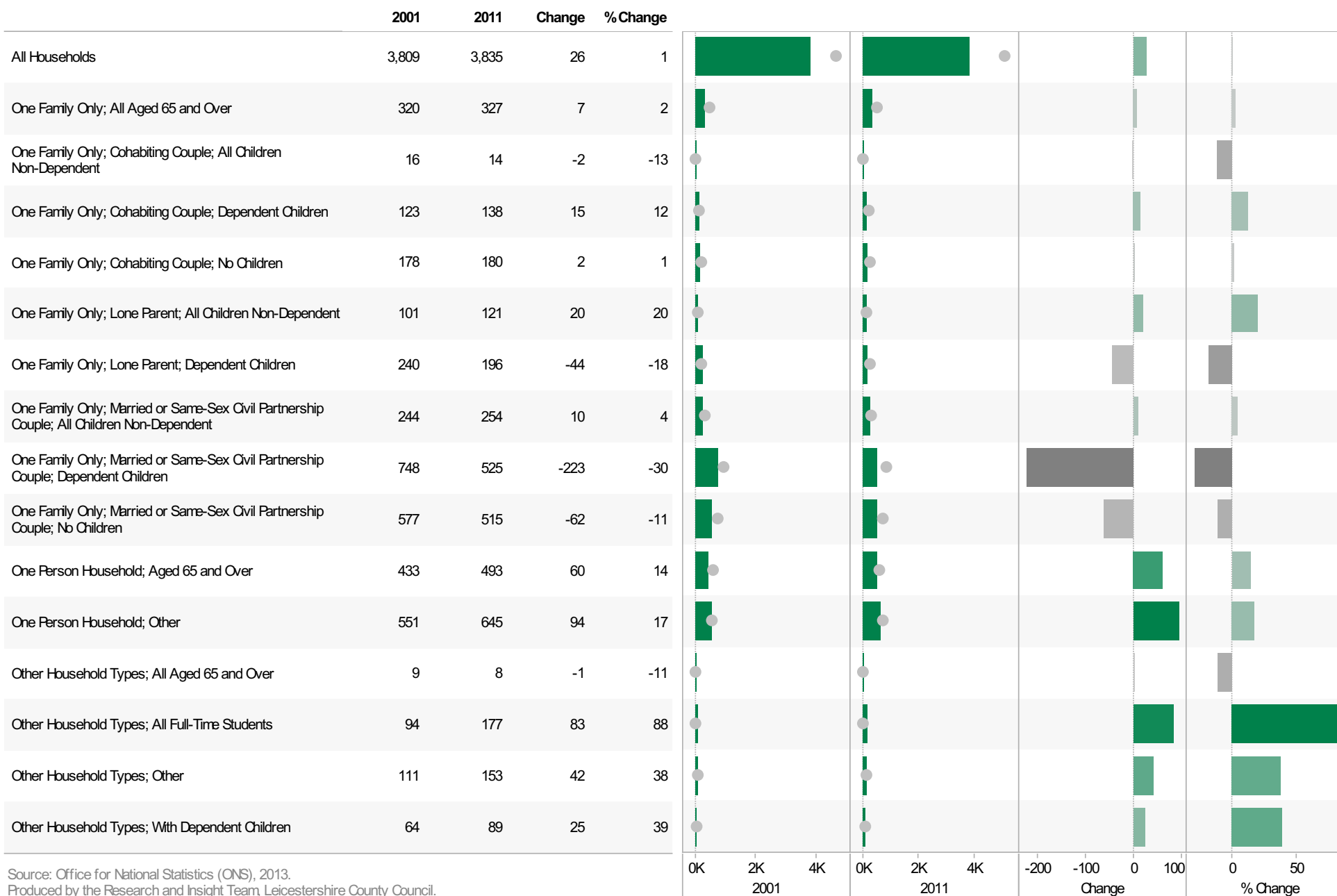


2001-11 Percentage change by sex and quinary age band



## Loughborough North West ED KS105EW : Household Composition, 2001-11

Coloured bar - data for Electoral Division  
Grey circle - average for all Leicestershire Electoral Divisions

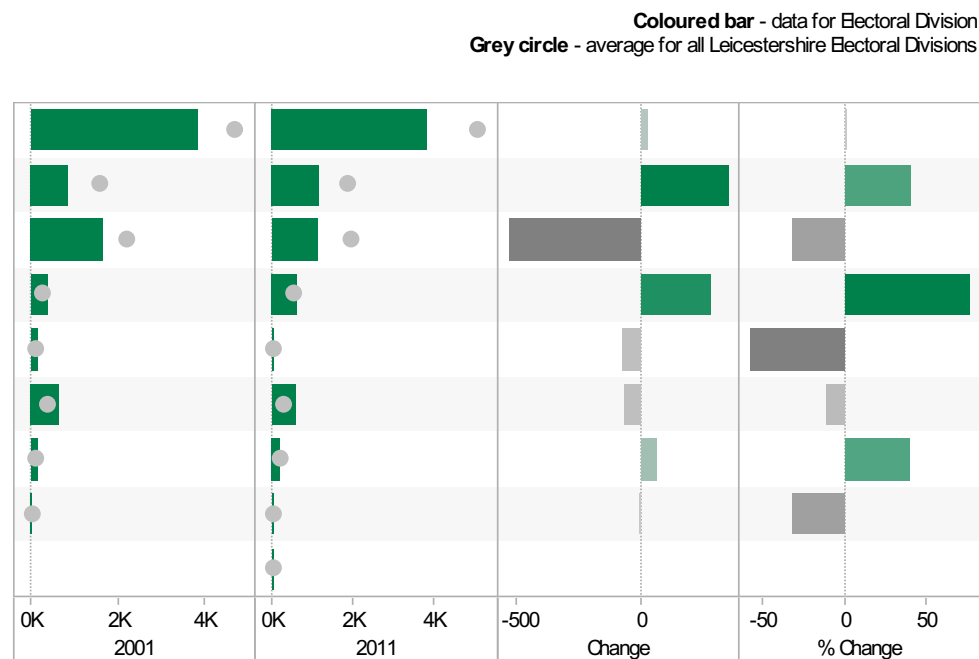


Source: Office for National Statistics (ONS), 2013.  
Produced by the Research and Insight Team, Leicestershire County Council.



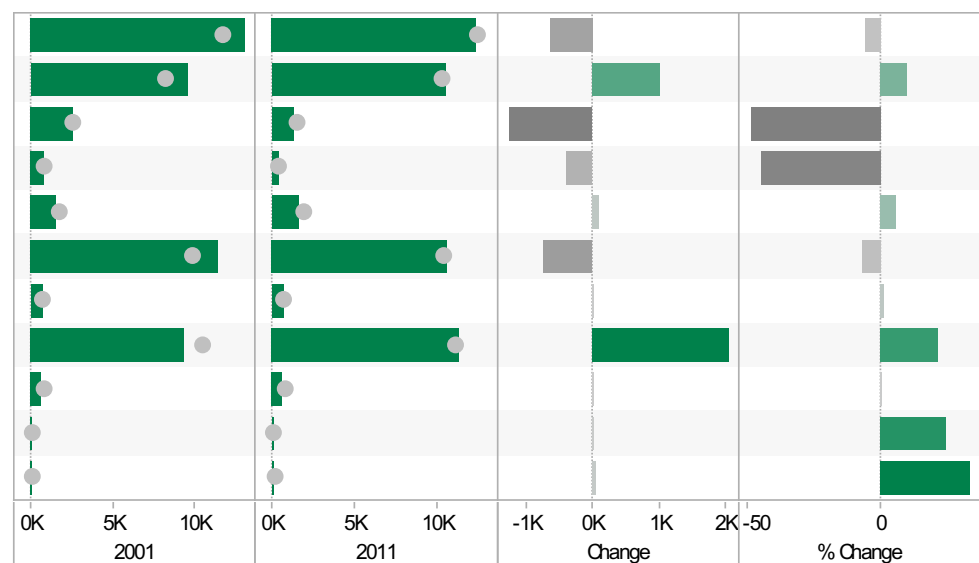
## Loughborough North West ED KS402EW: Tenure, 2001-11

	2001	2011	Change	% Change
All Households	3,809	3,835	26	1
Owned; Owned Outright	836	1,177	341	41
Owned; Owned with a Mortgage or Loan	1,672	1,144	-528	-32
Private Rented; Private Landlord or Letting Agency	354	623	269	76
Private Rented; Other	129	54	-75	-58
Social Rented; Rented from Council (Local Authority)	648	576	-72	-11
Social Rented; Other	139	193	54	39
Shared Ownership (Part Owned and Part Rented)	31	21	-10	-32
Living Rent Free		47		



## Loughborough North West ED KS301EW: Health and Provision of Unpaid Care, 2001-11

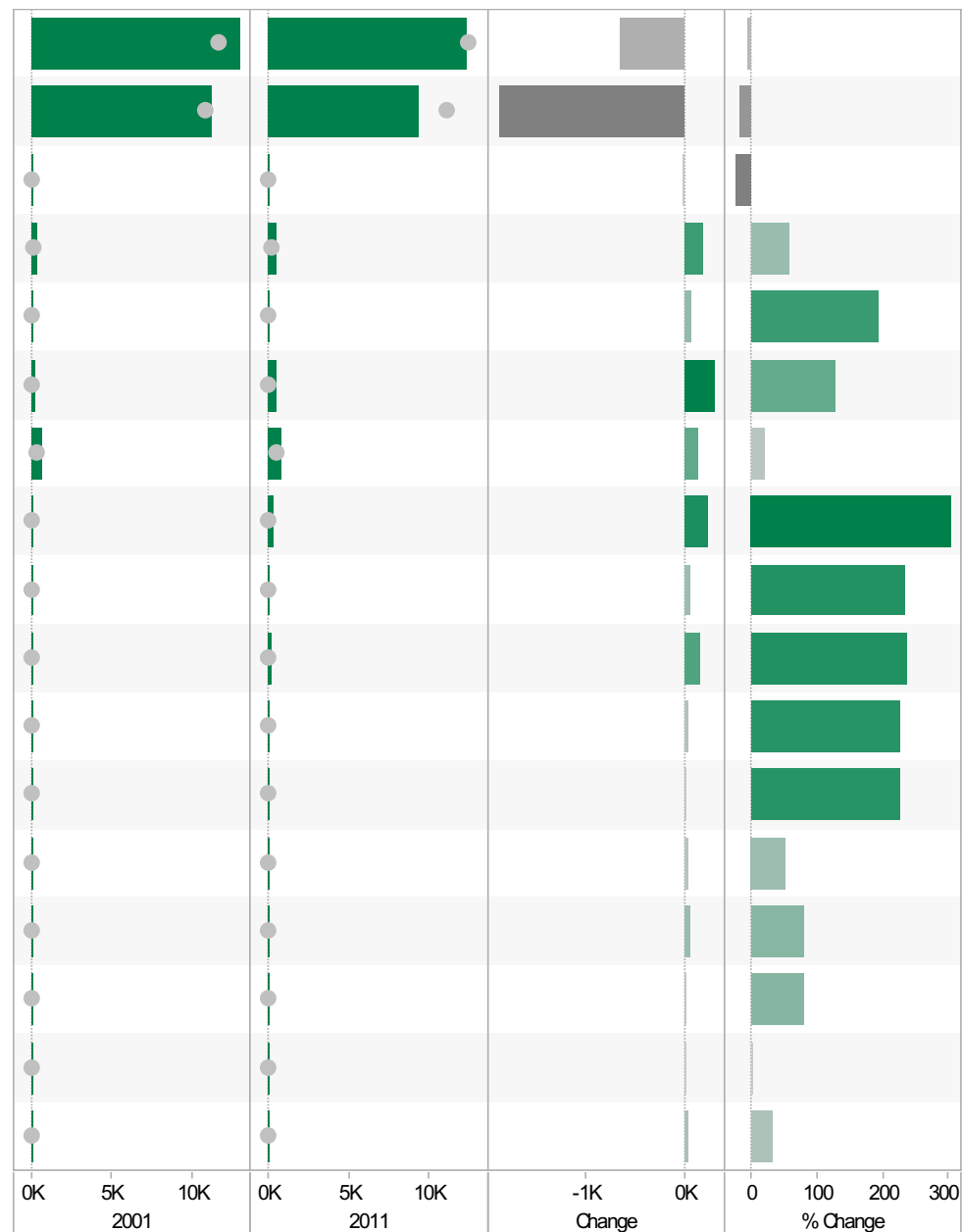
	2001	2011	Change	% Change
All usual residents	12,975	12,316	-659	-5
Very/ good Health	9,491	10,497	1,006	11
Fair health	2,612	1,338	-1,274	-49
Very/ bad Health	872	481	-391	-45
Day-to-day activities limited	1,592	1,691	99	6
Day-to-day activities not limited	11,383	10,625	-758	-7
Day-to-day activities limited a lot: Age 16 to 64	771	784	13	2
Provides no unpaid care	9,304	11,343	2,039	22
Provides 1 to 19 hours unpaid care a week	669	670	1	0
Provides 20 to 49 hours unpaid care a week	83	104	21	25
Provides 50 or more hours unpaid care a week	149	199	50	34



## Loughborough North West ED KS201EW : Ethnic Group, 2001-11

Coloured bar - data for Electoral Division  
Grey circle - average for all Leicestershire Electoral Divisions

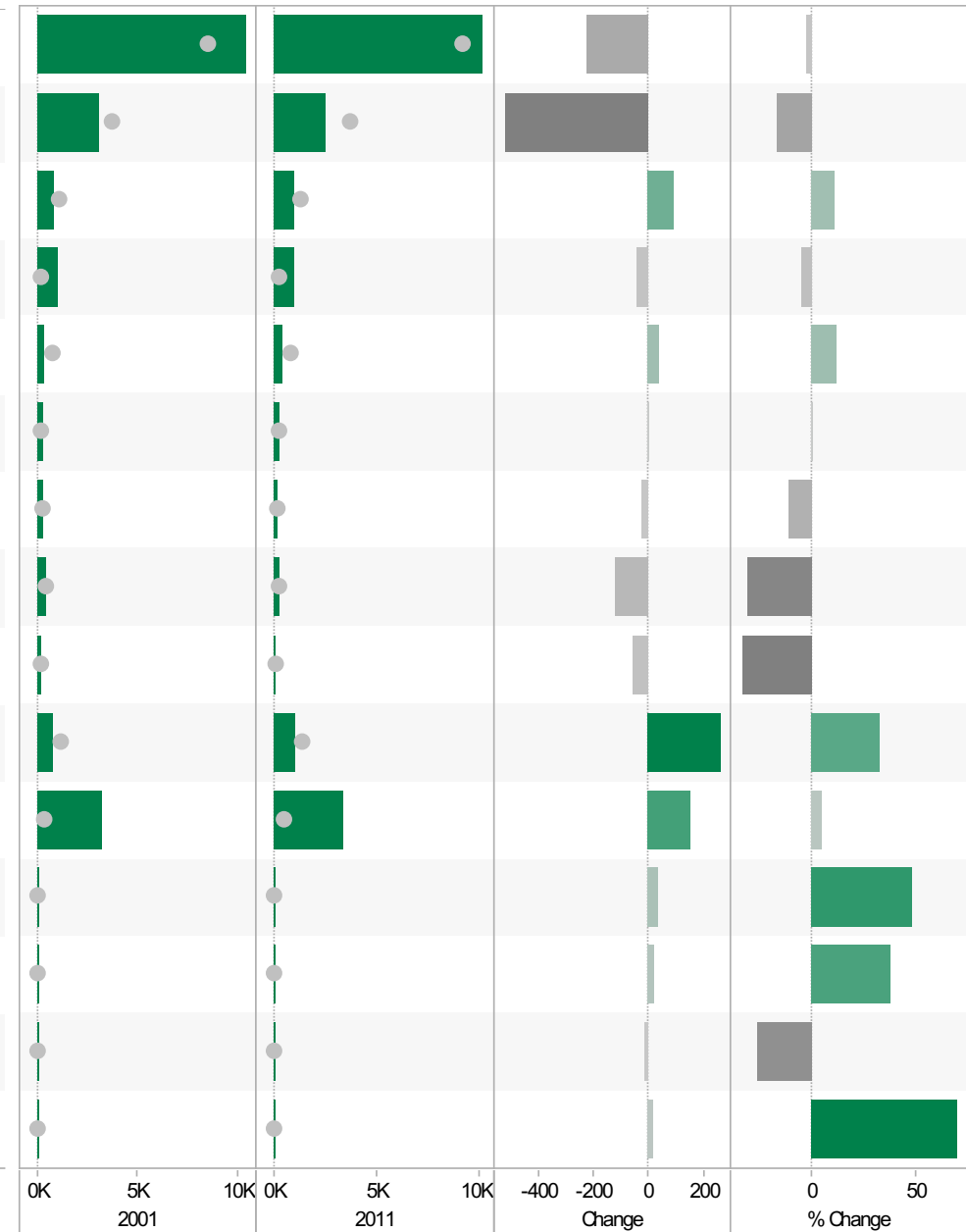
	2001	2011	Change	% Change
All usual residents	12,973	12,316	-657	-5
White: English/Welsh/Scottish/Northern Irish/British	11,217	9,343	-1,874	-17
White: Irish	95	72	-23	-24
White: Other White	305	484	179	59
Asian/Asian British: Bangladeshi	31	91	60	194
Asian/Asian British: Chinese	225	511	286	127
Asian/Asian British: Indian	647	774	127	20
Asian/Asian British: Other Asian	77	310	233	303
Asian/Asian British: Pakistani	21	70	49	233
Black/African/Caribbean/Black British: African	63	212	149	237
Black/African/Caribbean/Black British: Caribbean	12	39	27	225
Black/African/Caribbean/Black British: Other Black	4	13	9	225
Mixed/multiple ethnic group: Other Mixed	40	61	21	53
Mixed/multiple ethnic group: White and Asian	66	119	53	80
Mixed/multiple ethnic group: White and Black African	16	29	13	81
Mixed/multiple ethnic group: White and Black Caribbean	52	52	0	0
Other ethnic group: Any other ethnic group	102	136	34	33



**Loughborough North West ED**  
**KS601EW : Economic Activity, 2001-11**

**Coloured bar** - data for Electoral Division  
**Grey circle** - average for all Leicestershire Electoral Divisions

	2001	2011	Change	% Change
All usual residents aged 16 and over	10,392	10,169	-223	-2
Economically active: Employee: Full-time	3,074	2,550	-524	-17
Economically active: Employee: Part-time	870	965	95	11
Economically active: Full-time student	1,002	955	-47	-5
Economically active: Self-employed	357	399	42	12
Economically active: Unemployed	254	256	2	1
Economically inactive: Long-term sick or disabled	230	204	-26	-11
Economically inactive: Looking after home or family	386	266	-120	-31
Economically inactive: Other	167	110	-57	-34
Economically inactive: Retired	788	1,048	260	33
Economically inactive: Student (including full-time students)	3,264	3,416	152	5
Long-term unemployed	66	98	32	48
Unemployed: Age 16 to 24	60	83	23	38
Unemployed: Age 50 and over	61	45	-16	-26
Unemployed: Never worked	20	34	14	70

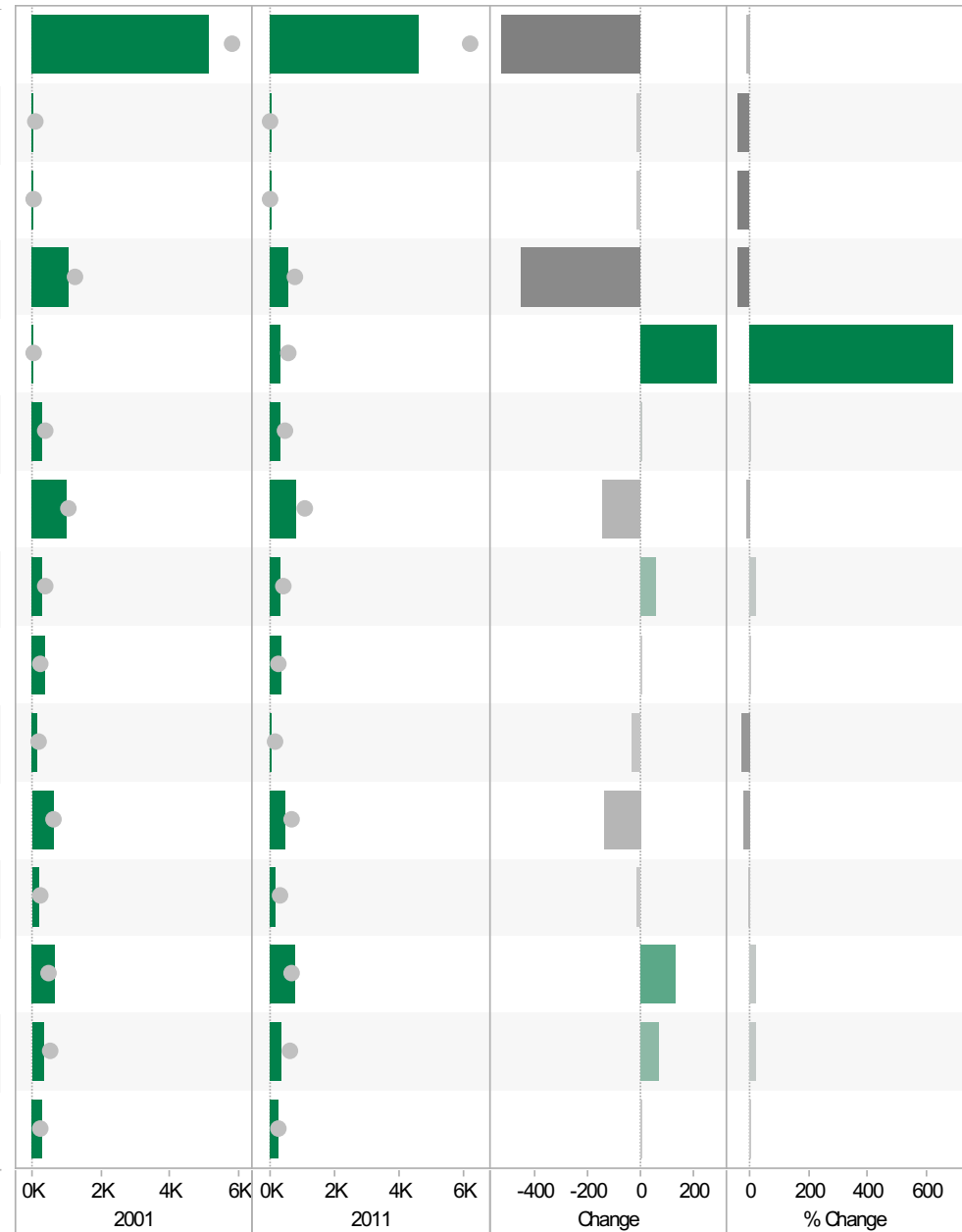


Source: Office for National Statistics (ONS), 2013.  
 Produced by the Research and Insight Team, Leicestershire County Council.

**Loughborough North West ED**  
**KS605EW : Industry, 2001-11**

**Coloured bar** - data for Electoral Division  
**Grey circle** - average for all Leicestershire Electoral Divisions

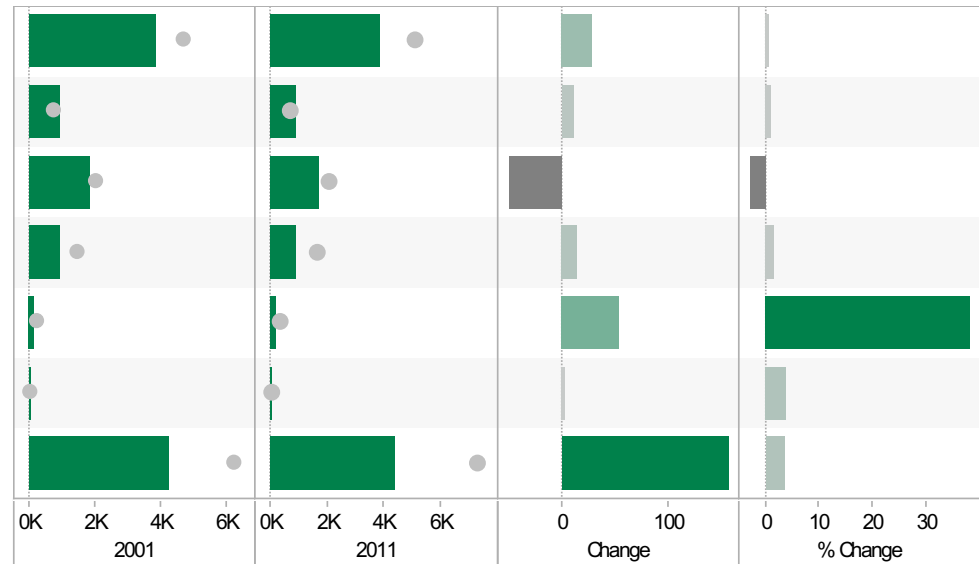
	2001	2011	Change	% Change
All usual residents aged 16 and over in employment	5,152	4,626	-526	-10
A Agriculture, forestry and fishing	32	19	-13	-41
B Mining and quarrying	28	16	-12	-43
C Manufacturing	1,042	593	-449	-43
D, F Electricity, gas, steam, air conditioning supply, water and sewerage	41	324	283	690
F Construction	289	297	8	3
G Wholesale and retail trade; repair of motor vehicles and motor cycles	971	827	-144	-15
H, J Transport, storage, information and communication	251	306	55	22
I Accommodation and food service activities	359	359	0	0
K Financial and insurance activities	110	78	-32	-29
L, M, N Real estate activities Professional, scientific and technical activities Administrative and support service activities	608	468	-140	-23
O Public administration and defence; compulsory social security	179	169	-10	-6
P Education	660	791	131	20
Q Human health and social work activities	315	382	67	21
R, S, T, U Other	267	265	-2	-1



Source: Office for National Statistics (ONS), 2013.  
 Produced by the Research and Insight Team, Leicestershire County Council.

### Loughborough North West ED KS404EW : Car and Van Availability, 2001-11

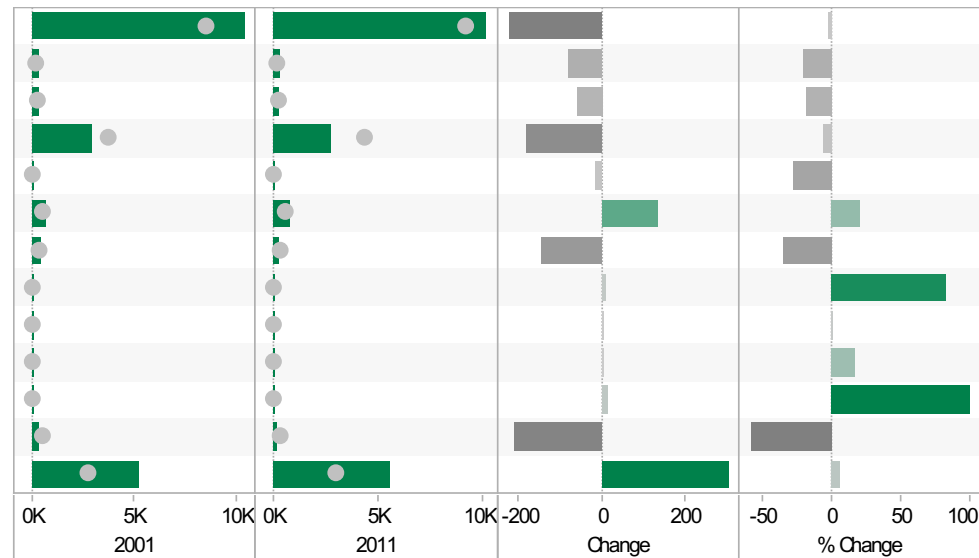
	2001	2011	Change	% Change
All Households	3,807	3,835	28	1
No Cars or Vans in Household	913	923	10	1
1 Car or Van in Household	1,811	1,760	-51	-3
2 Cars or Vans in Household	891	905	14	2
3 Cars or Vans in Household	140	193	53	38
4 or More Cars or Vans in Household	52	54	2	4
All Cars or Vans in the Area	4,234	4,391	157	4



Coloured bar - data for Electoral Division  
Grey circle - average for all Leicestershire Electoral Divisions

### Loughborough North West ED QS701EW : Method of Travel to Work, 2001-11

	2001	2011	Change	% Change
All Usual Residents Aged 16 to 74	10,392	10,169	-223	-2
Bicycle	369	290	-79	-21
Bus, Minibus or Coach	328	267	-61	-19
Driving a Car or Van	2,873	2,692	-181	-6
Motorcycle, Scooter or Moped	52	37	-15	-29
On Foot	670	807	137	20
Passenger in a Car or Van	413	268	-145	-35
Taxi	12	22	10	83
Train	66	67	1	2
Underground, Metro, Light Rail, Tram	6	7	1	17
Other Method of Travel to Work	14	28	14	100
Work Mainly at or From Home	349	141	-208	-60
Not in Employment	5,240	5,543	303	6



Source: Office for National Statistics (ONS), 2013.  
Produced by the Research and Insight Team, Leicestershire County Council.

If you require information contained in this leaflet in another version e.g. large print, Braille, tape or alternative language please telephone: 0116 305 6803, Fax: 0116 305 7271 or Minicom: 0116 305 6160.

ਜੇ ਆਪ ਆ ਮਾਭਿਨੀ ਆਪਨੀ ਆਧਾਮਾਂ ਸਮਝਵਾਮਾਂ ਥੋੜੀ ਮਦਦ ਈਝਤਾਂ ਡੋ ਤੋ 0116 305 6803 ਨੰਬਰ ਪਰ ਝੋਨ ਕਰਥੋ ਅਨੇ ਅਮੇ ਆਪਨੇ ਮਦਦ ਕਰਵਾ ਆਵਥਾ ਕਰੀਥੁੰ.

ਜੇਕਰ ਤੁਹਾਨੂੰ ਇਸ ਜਾਣਕਾਰੀ ਨੂੰ ਸਮਝਣ ਵਿਚ ਕੁਝ ਮਦਦ ਚਾਹੀਦੀ ਹੈ ਤਾਂ ਕਿਰਪਾ ਕਰਕੇ 0116 305 6803 ਨੰਬਰ ਤੇ ਫ਼ੋਨ ਕਰੋ ਅਤੇ ਅਸੀਂ ਤੁਹਾਡੀ ਮਦਦ ਲਈ ਕਿਸੇ ਦਾ ਪ੍ਰਬੰਧ ਕਰ ਦਵਾਂਗੇ।

এই তথ্য নিজের ভাষায় বুঝার জন্য আপনার যদি কোন সাহায্যের প্রয়োজন হয়, তবে 0116 305 6803 এই নম্বরে ফোন করলে আমরা উপযুক্ত ব্যক্তির ব্যবস্থা করবো।

اگر آپ کو یہ معلومات سمجھنے میں کچھ مدد درکار ہے تو براہ مہربانی اس نمبر پر کال کریں اور ہم آپ کی مدد کے لئے کسی کا انتظام کر دیں گے۔ 0116 305 6803

假如閣下需要幫助，用你的語言去明白這些資訊，請致電 0116 305 6803，我們會安排有關人員為你提供幫助。

Jeżeli potrzebujesz pomocy w zrozumieniu tej informacji w Twoim języku, zadzwoń pod numer 0116 305 6803, a my Ci dopomożemy.

Research & Insight Team  
Strategy, Partnerships & Communities  
Chief Executive's Department  
Leicestershire County Council  
County Hall  
Glenfield  
Leicester  
LE3 8RA

[ri@leics.gov.uk](mailto:ri@leics.gov.uk)  
[www.lsr-online.org](http://www.lsr-online.org)