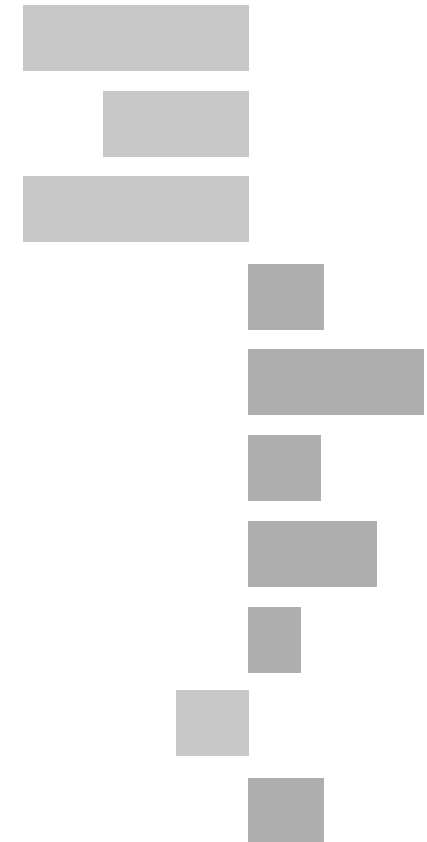


Loughborough South West Electoral Division

2011 Census Key Statistics

Alex Lea
May 2013

Research and Insight Team
Leicestershire County Council



Alex Lea

Research & Insight Manager

Research & Insight Team
Strategy, Partnerships & Communities
Leicestershire County Council
County Hall
Glenfield
Leicester LE3 8RB

Tel 0116 305 6803

Email alex.lea@leics.gov.uk

Produced by the Research and Insight Team at Leicestershire County Council.

Whilst every effort has been made to ensure the accuracy of the information contained within this report, Leicestershire County Council cannot be held responsible for any errors or omission relating to the data contained within the report.

CONTENTS

Introduction

About this Report	4
2011 Census	4
Data	5
Census Geography	5
Indicator Changes 2001-11	6

Population

KS101EW - Usual Resident Population	7
KS102EW - Age Structure	7

Households

KS105EW - Household Composition	8
KS402EW - Tenure	9

Health and Caring

KS301EW - Health and Provision of Unpaid Care	9
---	---

Ethnicity

KS201EW - Ethnic Group	10
------------------------	----

Economy

KS601EW - Economic Activity	11
KS605EW - Industry	12

Transport

KS404EW - Car and Van Availability	13
QS701EW- Method of Travel to Work	13

INTRODUCTION

ABOUT THIS REPORT

This report provides a broad overview of the 2011 Census Key Statistics data, released by the Office for National Statistics on 30th January 2013, as part of the Second Release. This report summarises a selection of key headline datasets of this release for Leicestershire Electoral Divisions (EDs).

The Research and Insight Team at Leicestershire County Council has used data from the Second release to create an interactive Tableau dashboard containing 32 datasets covering the following geographies:

- England
- East Midlands
- East Midlands counties . Including Leicestershire
- Leicester City and Rutland Unitary Authorities
- Leicestershire districts

In addition, a headline report covers the results for Leicestershire and the seven districts that make up the county. The dashboard and report are available at the following links:

Census 2011 Key Statistics Dashboard

<http://public.tableausoftware.com/views/LAKeyStatsDashboard/Dashboard>

May 2013

Census 2011 Key Statistics Headline Report

http://www.lsr-online.org/reports/census_2011_key_statistics_headline_report/download/1/Census%202011%20Second%20Release%20FINAL.pdf

2011 CENSUS

Census statistics help paint a picture of the nation and how we live. They provide a detailed snapshot of the population and its characteristics, and underpin funding allocation to provide public services.¹ Data from the 2011 Census is made available at a variety of different levels of geography and in various releases.

The Key Statistics data covers a broad range of socio-economic topics, including data on ethnicity, health and employment. Each Key Statistic dataset is referred to by its unique three-digit code with the 'KS' prefix to denote a Key statistic (e.g. KS101). These are used throughout the report.

A full list of the 35 Key Statistics data tables are available here:

<http://www.ons.gov.uk/ons/publications/re-reference-tables.html?edition=tcm%3A77-286262>

¹ Office for National Statistics (ONS), 2013.

Further results from the census will be released throughout 2013, for more information, please visit:

<http://www.lsr-online.org/census-2011.html>

More information on the 2011 Census can be found here:

<http://www.ons.gov.uk/ons/guide-method/census/2011/index.html>

DATA

Data has been compiled for Leicestershire Electoral Divisions, covering the key datasets from the 2011 Census Key statistics.

Figures for 2011 and 2001 are included, along with the overall and percentage change between the two censuses. Data for each indicator is presented in a table and chart.

Population data is displayed in a table, a population pyramid and a chart showing percentage change between 2001 and 2011. All other data is displayed in tables, and charts. Charts for change between 2001 and 2011 are coloured according to the degree of change between the two censuses; grey corresponds to smallest change and green the largest change. A marker indicates the average figure for all Leicestershire Electoral Divisions.

GEOGRAPHY

Maps for all County Council Electoral Divisions can be found here:

http://www.leics.gov.uk/index/your_council/local_democracy/conductofcouncillorsandemployees/electoraldivisionmapsindex/electoraldivisionmaps.htm

As Census data is not made available for Electoral Divisions, smaller areas, called Lower Super Output Areas (LSOAs) have been used as building blocks for the figures included in this report. LSOAs are small parcels of geography, containing a minimum of 1,000 people, a maximum of 3,000 and an average of 1,500. LSOAs were initially developed for the 2001 Census and are used to release a range of neighbourhood-level datasets from various sources. There are 396 LSOAs in Leicestershire.

In some instances, LSOAs do not fit neatly within Electoral Divisions and in these cases, population weighted centroids - representing the 'centre of gravity' for population within an area - have been used in order to assign each LSOA to an Electoral Division. Electoral Divisions that fall within this category are indicated with a (*).

More information on Lower Super Output Areas can be found here:

<http://www.ons.gov.uk/ons/guide-method/geography/beginner-s-guide/census/super-output-areas--soas-/index.html>

INDICATOR CHANGES 2001-11

The following questions were asked in slightly different ways in 2011 compared to 2001. As such, care should be taken when making comparison between years.

KS201EW : Ethnic Group

Asian/Asian British: Chinese
Mixed/multiple ethnic group: Other Mixed
Mixed/multiple ethnic group: White and Asian
Mixed/multiple ethnic group: White and Black African
Mixed/multiple ethnic group: White and Black Caribbean
Other ethnic group: Any other ethnic group
White: English/Welsh/Scottish/Northern Irish/British
White: Other White

KS301EW : Health and Provision of Unpaid Care

Day-to-day activities limited
Day-to-day activities limited: Age 16 to 64
Day-to-day activities not limited
Fair health
Very/ bad Health
Very/ good Health

KS601EW : Economic Activity

All usual residents aged 16 and over
Economically active: Employee: Full-time
Economically active: Employee: Part-time
Economically active: Full-time student

Economically active: Self-employed
Economically active: Unemployed
Economically inactive: Long-term sick or disabled
Economically inactive: Looking after home or family
Economically inactive: Other
Economically inactive: Retired
Economically inactive: Student (including full-time)
Long-term unemployed
Unemployed: Age 50 and over
Unemployed: Never worked

KS605EW : Industry

All usual residents aged 16 and over in employment
A Agriculture, forestry and fishing
B Mining and quarrying
C Manufacturing
D, F Electricity, gas, steam, air conditioning supply etc
F Construction
G Wholesale and retail trade; repair of motor vehicles etc
H, J Transport, storage, information and communication
I Accommodation and food service activities
K Financial and insurance activities
L,M,N Real estate activities Professional, scientific etc
O Public administration and defence etc
P Education
Q Human health and social work activities
R, S, T, U Other

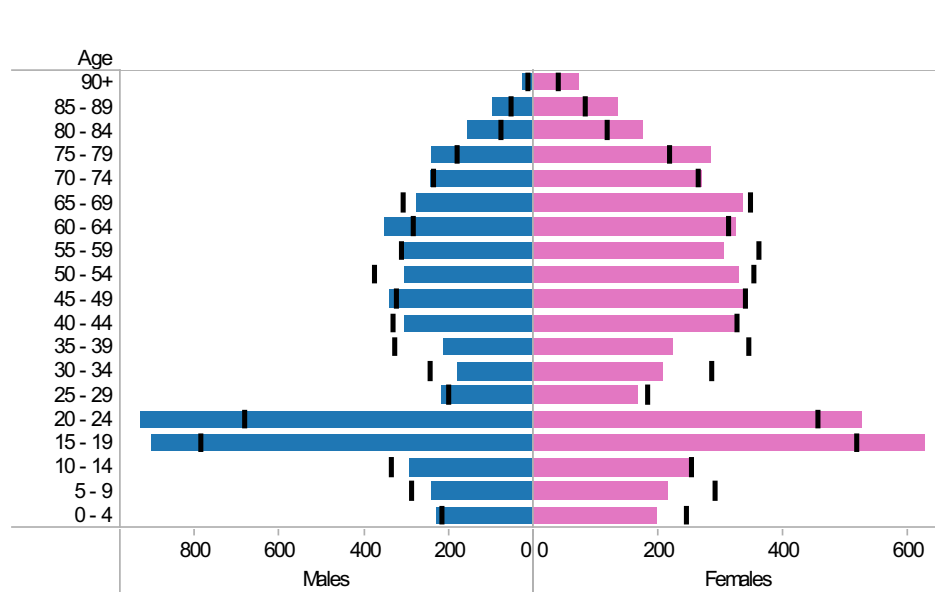
Loughborough South West ED: KS101EW : Usual Resident Population, KS102EW : Age Structure

■ Males
 ■ Females
 ■ Persons

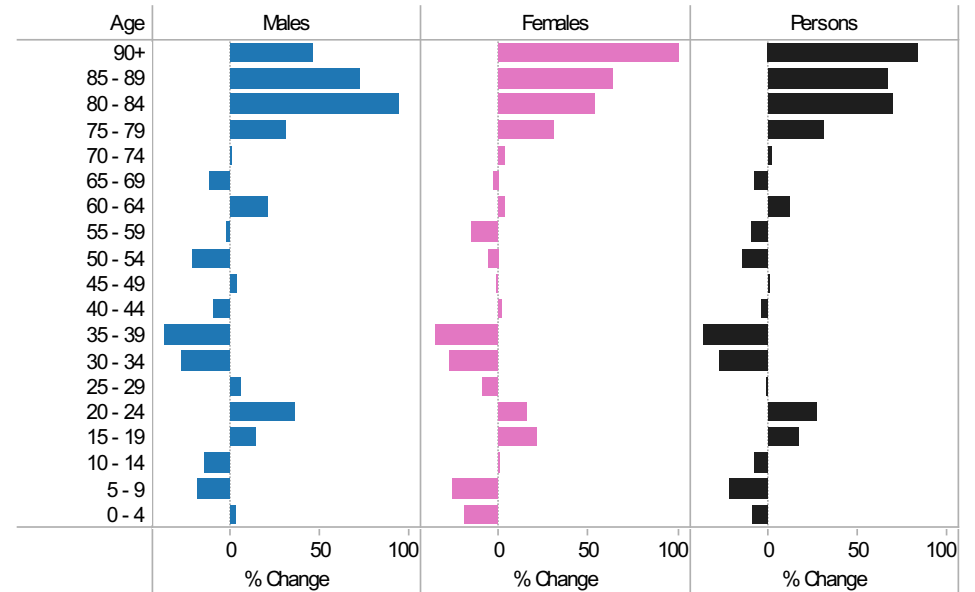
2001-11 Population by sex and quinary age band

Age	Males			Females			Persons		
	2001	2011	Change 2001-11	2001	2011	Change 2001-11	2001	2011	Change 2001-11
90+	15	22	7	37	74	37	52	96	44
85 - 89	55	95	40	82	134	52	137	229	92
80 - 84	79	154	75	115	176	61	194	330	136
75 - 79	182	239	57	215	282	67	397	521	124
70 - 74	241	244	3	261	271	10	502	515	13
65 - 69	310	276	-34	345	334	-11	655	610	-45
60 - 64	288	349	61	311	323	12	599	672	73
55 - 59	316	311	-5	358	305	-53	674	616	-58
50 - 54	379	301	-78	350	330	-20	729	631	-98
45 - 49	327	340	13	337	334	-3	664	674	10
40 - 44	333	304	-29	323	330	7	656	634	-22
35 - 39	329	210	-119	343	224	-119	672	434	-238
30 - 34	246	180	-66	283	207	-76	529	387	-142
25 - 29	203	215	12	182	166	-16	385	381	-4
20 - 24	685	930	245	454	527	73	1,139	1,457	318
15 - 19	788	900	112	516	627	111	1,304	1,527	223
10 - 14	337	290	-47	250	253	3	587	543	-44
5 - 9	291	240	-51	289	215	-74	580	455	-125
0 - 4	221	227	6	242	198	-44	463	425	-38
All Ages	5,625	5,827	202	5,293	5,310	17	10,918	11,137	219

2011 (coloured bars) and 2001 (black marks) population by sex and quinary age



2001-11 Percentage change by sex and quinary age band



Loughborough South West ED
KS105EW : Household Composition, 2001-11

Coloured bar - data for Electoral Division
Grey circle - average for all Leicestershire Electoral Divisions

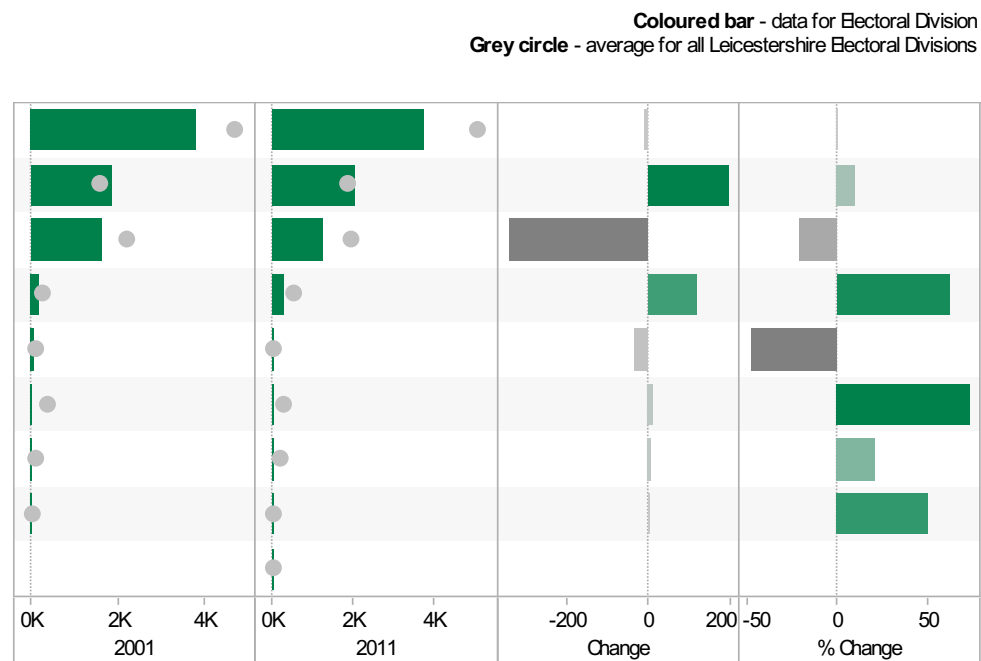
	2001	2011	Change	% Change
All Households	3,792	3,780	-12	0
One Family Only; All Aged 65 and Over	600	627	27	5
One Family Only; Cohabiting Couple; All Children Non-Dependent	0	11	11	
One Family Only; Cohabiting Couple; Dependent Children	50	70	20	40
One Family Only; Cohabiting Couple; No Children	83	90	7	8
One Family Only; Lone Parent; All Children Non-Dependent	75	88	13	17
One Family Only; Lone Parent; Dependent Children	104	99	-5	-5
One Family Only; Married or Same-Sex Civil Partnership Couple; All Children Non-Dependent	273	266	-7	-3
One Family Only; Married or Same-Sex Civil Partnership Couple; Dependent Children	902	770	-132	-15
One Family Only; Married or Same-Sex Civil Partnership Couple; No Children	640	557	-83	-13
One Person Household; Aged 65 and Over	563	595	32	6
One Person Household; Other	295	312	17	6
Other Household Types; All Aged 65 and Over	12	6	-6	-50
Other Household Types; All Full-Time Students	52	110	58	112
Other Household Types; Other	73	115	42	58
Other Household Types; With Dependent Children	70	64	-6	-9



Source: Office for National Statistics (ONS), 2013.
 Produced by the Research and Insight Team, Leicestershire County Council.

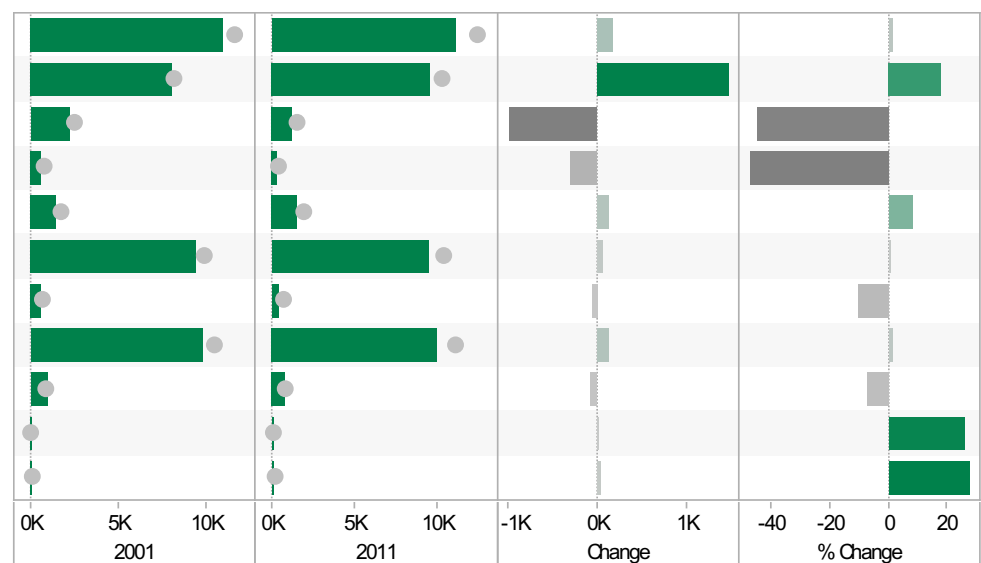
Loughborough South West ED KS402EW: Tenure, 2001-11

	2001	2011	Change	% Change
All Households	3,791	3,780	-11	0
Owned; Owned Outright	1,864	2,059	195	10
Owned; Owned with a Mortgage or Loan	1,605	1,264	-341	-21
Private Rented; Private Landlord or Letting Agency	189	307	118	62
Private Rented; Other	70	36	-34	-49
Social Rented; Rented from Council (Local Authority)	15	26	11	73
Social Rented; Other	42	51	9	21
Shared Ownership (Part Owned and Part Rented)	6	9	3	50
Living Rent Free		28		



Loughborough South West ED KS301EW: Health and Provision of Unpaid Care, 2001-11

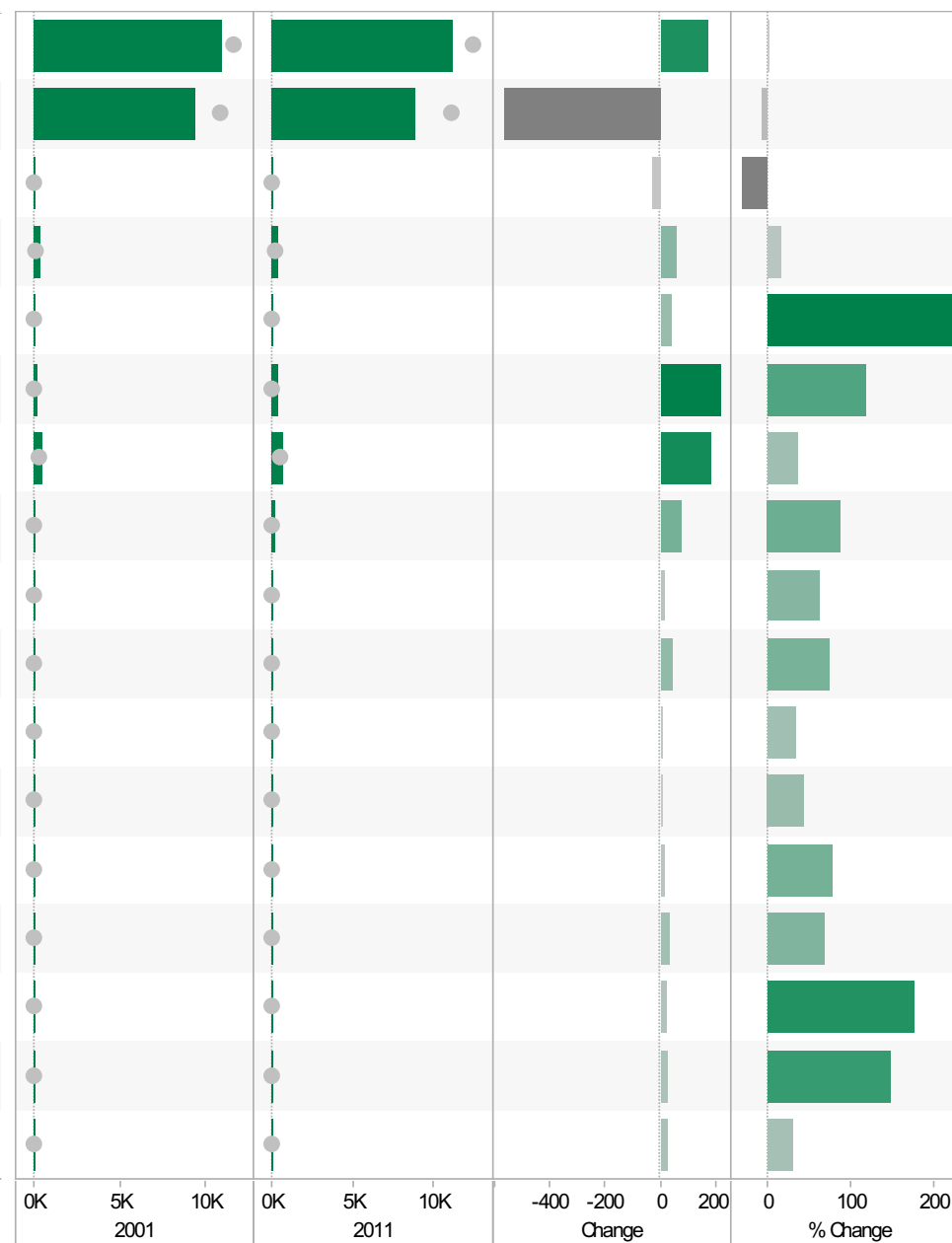
	2001	2011	Change	% Change
All usual residents	10,958	11,137	179	2
Very/ good Health	8,112	9,577	1,465	18
Fair health	2,224	1,232	-992	-45
Very/ bad Health	622	328	-294	-47
Day-to-day activities limited	1,494	1,618	124	8
Day-to-day activities not limited	9,464	9,519	55	1
Day-to-day activities limited a lot: Age 16 to 64	557	502	-55	-10
Provides no unpaid care	9,827	9,965	138	1
Provides 1 to 19 hours unpaid care a week	969	900	-69	-7
Provides 20 to 49 hours unpaid care a week	76	96	20	26
Provides 50 or more hours unpaid care a week	138	176	38	28



Loughborough South West ED KS201EW : Ethnic Group, 2001-11

Coloured bar - data for Electoral Division
Grey circle - average for all Leicestershire Electoral Divisions

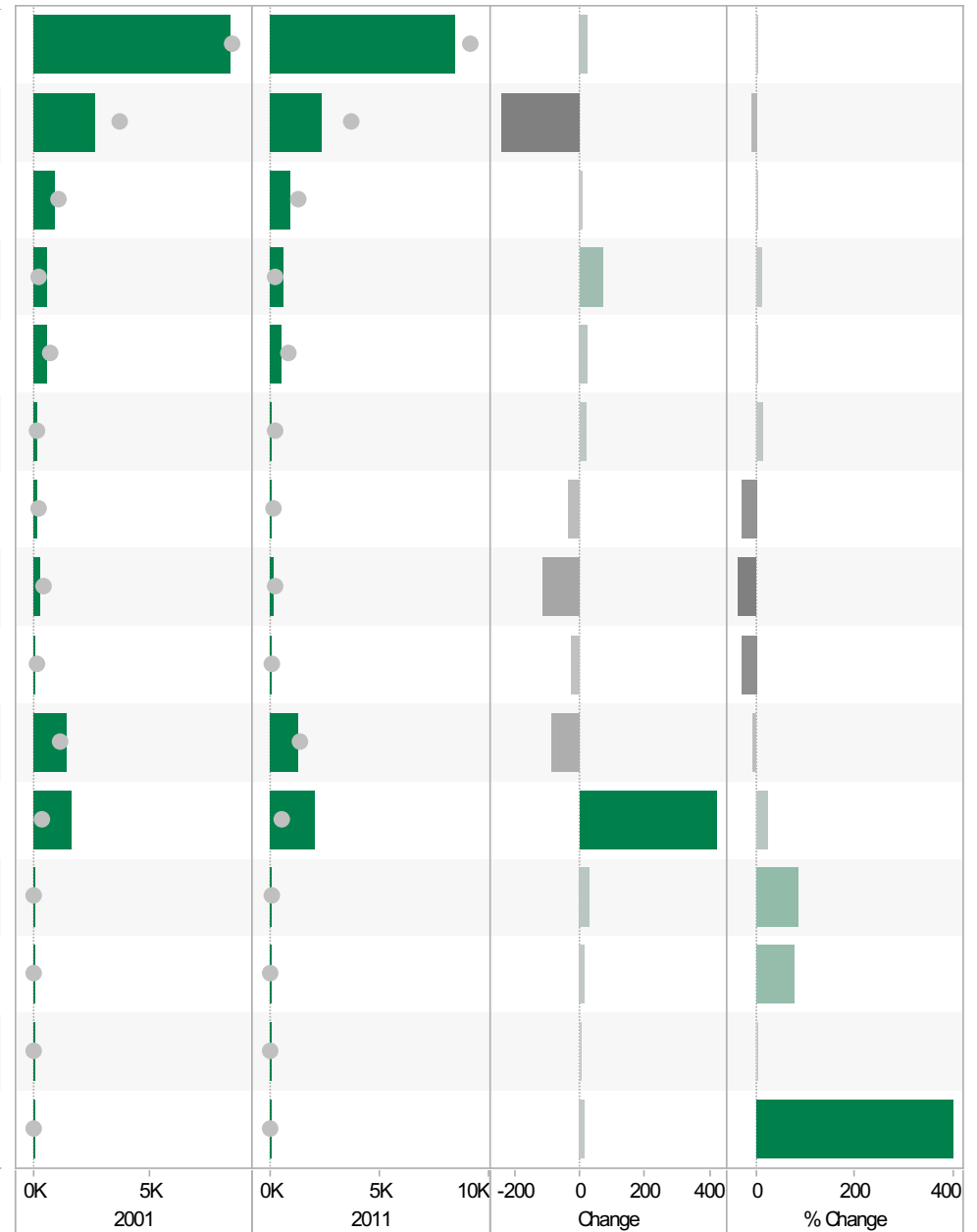
	2001	2011	Change	% Change
All usual residents	10,964	11,137	173	2
White: English/Welsh/Scottish/Northern Irish/British	9,412	8,848	-564	-6
White: Irish	100	70	-30	-30
White: Other White	360	417	57	16
Asian/Asian British: Bangladeshi	18	59	41	228
Asian/Asian British: Chinese	184	400	216	117
Asian/Asian British: Indian	507	692	185	36
Asian/Asian British: Other Asian	84	158	74	88
Asian/Asian British: Pakistani	26	42	16	62
Black/African/Caribbean/Black British: African	63	110	47	75
Black/African/Caribbean/Black British: Caribbean	20	27	7	35
Black/African/Caribbean/Black British: Other Black	9	13	4	44
Mixed/multiple ethnic group: Other Mixed	19	34	15	79
Mixed/multiple ethnic group: White and Asian	49	82	33	67
Mixed/multiple ethnic group: White and Black African	12	33	21	175
Mixed/multiple ethnic group: White and Black Caribbean	17	42	25	147
Other ethnic group: Any other ethnic group	84	110	26	31



Loughborough South West ED
KS601EW : Economic Activity, 2001-11

Coloured bar - data for Electoral Division
Grey circle - average for all Leicestershire Electoral Divisions

	2001	2011	Change	% Change
All usual residents aged 16 and over	8,414	8,438	24	0
Economically active: Employee: Full-time	2,623	2,380	-243	-9
Economically active: Employee: Part-time	926	933	7	1
Economically active: Full-time student	564	632	68	12
Economically active: Self-employed	559	584	25	4
Economically active: Unemployed	117	136	19	16
Economically inactive: Long-term sick or disabled	144	105	-39	-27
Economically inactive: Looking after home or family	307	193	-114	-37
Economically inactive: Other	100	71	-29	-29
Economically inactive: Retired	1,423	1,334	-89	-6
Economically inactive: Student (including full-time students)	1,651	2,070	419	25
Long-term unemployed	32	59	27	84
Unemployed: Age 16 to 24	19	34	15	79
Unemployed: Age 50 and over	41	41	0	0
Unemployed: Never worked	3	15	12	400

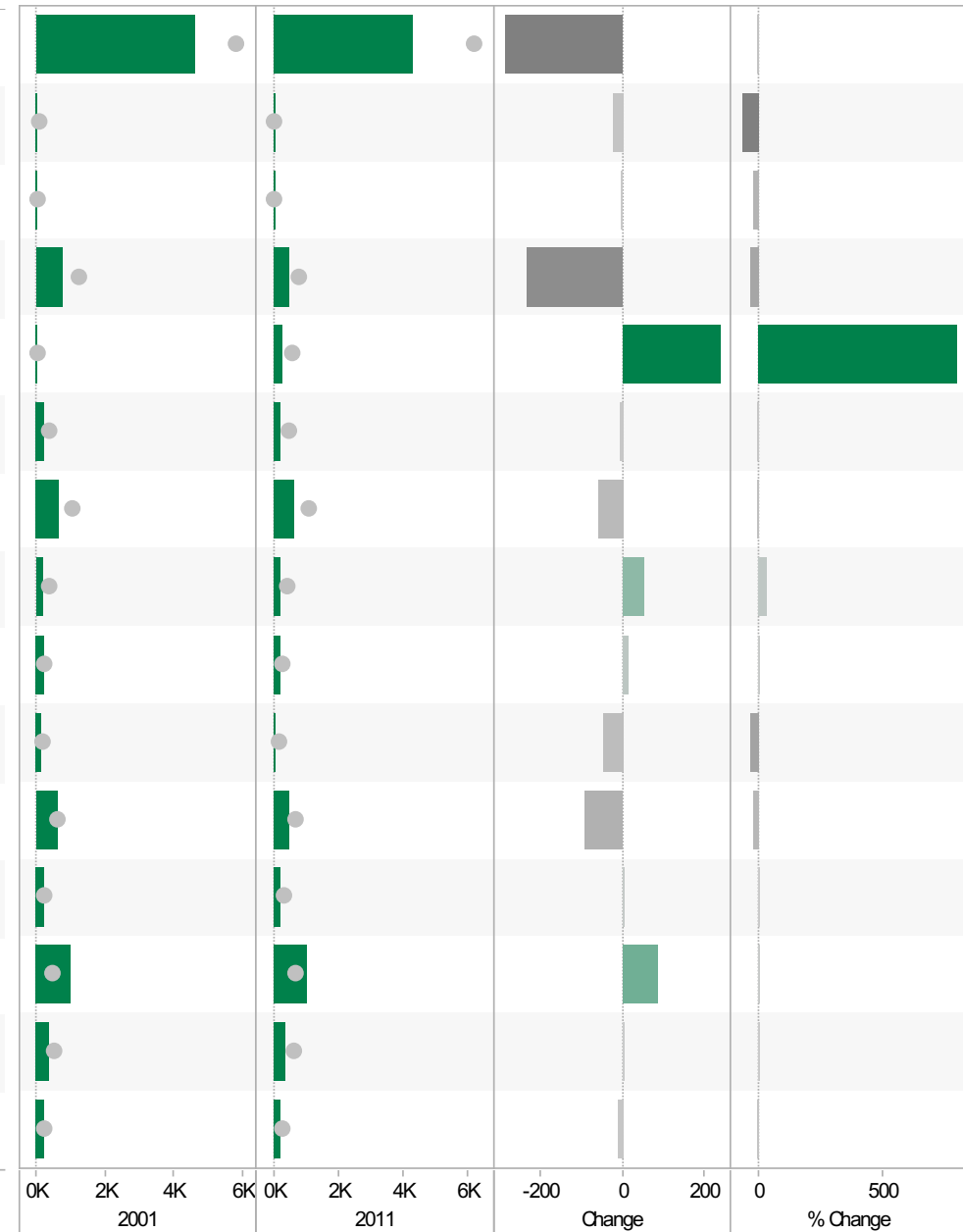


Source: Office for National Statistics (ONS), 2013.
 Produced by the Research and Insight Team, Leicestershire County Council.

Loughborough South West ED
KS605EW : Industry, 2001-11

Coloured bar - data for Electoral Division
Grey circle - average for all Leicestershire Electoral Divisions

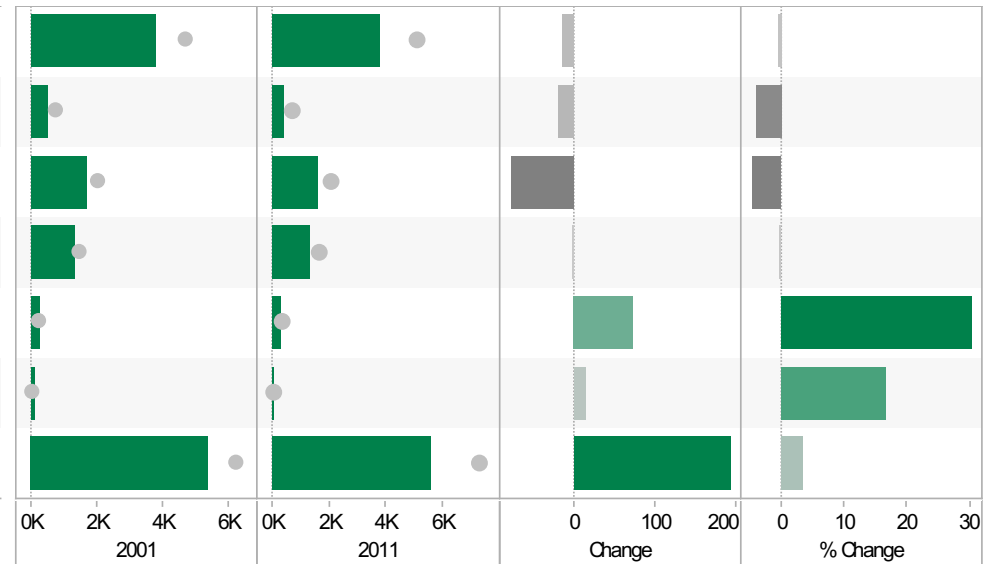
	2001	2011	Change	% Change
All usual residents aged 16 and over in employment	4,615	4,326	-289	-6
A Agriculture, forestry and fishing	32	10	-22	-69
B Mining and quarrying	15	12	-3	-20
C Manufacturing	726	493	-233	-32
D, F Electricity, gas, steam, air conditioning supply, water and sewerage	30	269	239	797
F Construction	234	226	-8	-3
G Wholesale and retail trade; repair of motor vehicles and motor cycles	668	609	-59	-9
H, J Transport, storage, information and communication	161	217	56	35
I Accommodation and food service activities	216	229	13	6
K Financial and insurance activities	140	91	-49	-35
L, M, N Real estate activities Professional, scientific and technical activities Administrative and support service activities	592	499	-93	-16
O Public administration and defence; compulsory social security	227	233	6	3
P Education	967	1,054	87	9
Q Human health and social work activities	370	371	1	0
R, S, T, U Other	237	225	-12	-5



Source: Office for National Statistics (ONS), 2013.
 Produced by the Research and Insight Team, Leicestershire County Council.

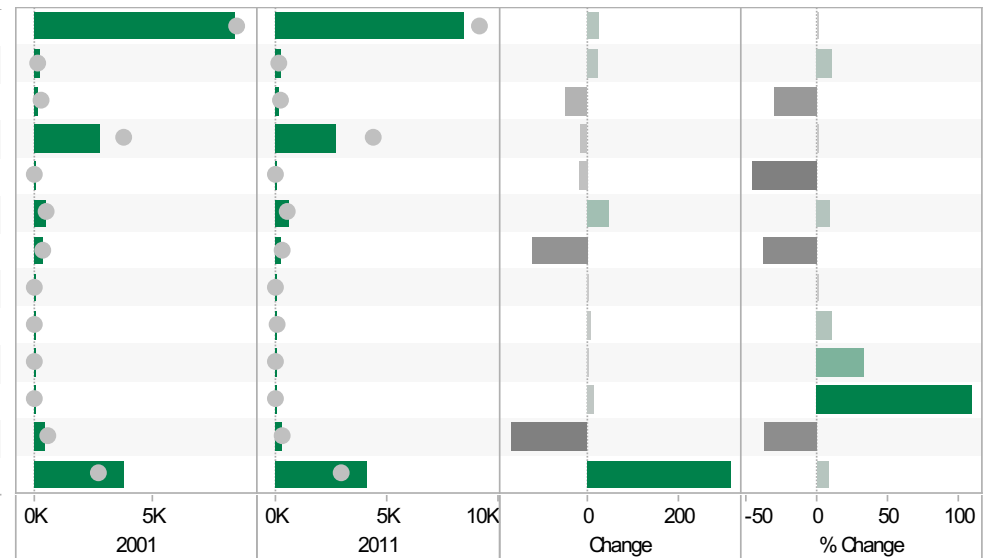
Loughborough South West ED KS404EW : Car and Van Availability, 2001-11

	2001	2011	Change	% Change
All Households	3,795	3,780	-15	0
No Cars or Vans in Household	478	459	-19	-4
1 Car or Van in Household	1,698	1,619	-79	-5
2 Cars or Vans in Household	1,303	1,301	-2	0
3 Cars or Vans in Household	238	310	72	30
4 or More Cars or Vans in Household	78	91	13	17
All Cars or Vans in the Area	5,355	5,547	192	4



Loughborough South West ED QS701EW : Method of Travel to Work, 2001-11

	2001	2011	Change	% Change
All Usual Residents Aged 16 to 74	8,413	8,438	25	0
Bicycle	229	251	22	10
Bus, Minibus or Coach	171	120	-51	-30
Driving a Car or Van	2,773	2,757	-16	-1
Motorcycle, Scooter or Moped	41	22	-19	-46
On Foot	532	580	48	9
Passenger in a Car or Van	320	196	-124	-39
Taxi	6	6	0	0
Train	70	77	7	10
Underground, Metro, Light Rail, Tram	6	8	2	33
Other Method of Travel to Work	12	25	13	108
Work Mainly at or From Home	455	284	-171	-38
Not in Employment	3,798	4,112	314	8



If you require information contained in this leaflet in another version e.g. large print, Braille, tape or alternative language please telephone: 0116 305 6803, Fax: 0116 305 7271 or Minicom: 0116 305 6160.

ਜੇ ਆਪ ਆ ਮਾਭਿਨੀ ਆਪਨੀ ਆਧਾਮਾਂ ਸਮਝਵਾਮਾਂ ਥੋੜੀ ਮਦਦ ਈਝਤਾਂ ਡੋ ਤੋ 0116 305 6803 ਨੰਬਰ ਪਰ ਫ਼ੋਨ ਕਰਥੋ ਅਨੇ ਅਮੇ ਆਪਨੇ ਮਦਦ ਕਰਵਾ ਆਵਥਾ ਕਰੀਥੁੰ.

ਜੇਕਰ ਤੁਹਾਨੂੰ ਇਸ ਜਾਣਕਾਰੀ ਨੂੰ ਸਮਝਣ ਵਿਚ ਕੁਝ ਮਦਦ ਚਾਹੀਦੀ ਹੈ ਤਾਂ ਕਿਰਪਾ ਕਰਕੇ 0116 305 6803 ਨੰਬਰ ਤੇ ਫ਼ੋਨ ਕਰੋ ਅਤੇ ਅਸੀਂ ਤੁਹਾਡੀ ਮਦਦ ਲਈ ਕਿਸੇ ਦਾ ਪ੍ਰਬੰਧ ਕਰ ਦਵਾਂਗੇ।

এই তথ্য নিজের ভাষায় বুঝার জন্য আপনার যদি কোন সাহায্যের প্রয়োজন হয়, তবে 0116 305 6803 এই নম্বরে ফোন করলে আমরা উপযুক্ত ব্যক্তির ব্যবস্থা করবো।

اگر آپ کو یہ معلومات سمجھنے میں کچھ مدد درکار ہے تو براہ مہربانی اس نمبر پر کال کریں اور ہم آپ کی مدد کے لئے کسی کا انتظام کر دیں گے۔ 0116 305 6803

假如閣下需要幫助，用你的語言去明白這些資訊，請致電 0116 305 6803，我們會安排有關人員為你提供幫助。

Jeżeli potrzebujesz pomocy w zrozumieniu tej informacji w Twoim języku, zadzwoń pod numer 0116 305 6803, a my Ci dopomożemy.

Research & Insight Team
Strategy, Partnerships & Communities
Chief Executive's Department
Leicestershire County Council
County Hall
Glenfield
Leicester
LE3 8RA

ri@leics.gov.uk
www.lsr-online.org