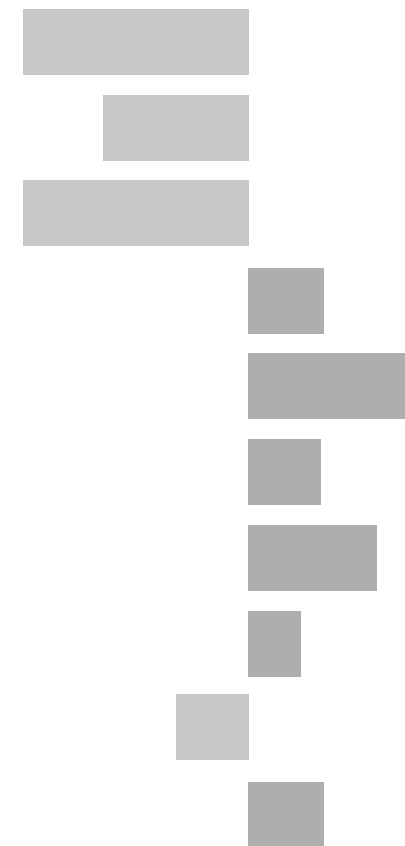


Shepshed Electoral Division

2011 Census Key Statistics

Alex Lea
May 2013

Research and Insight Team
Leicestershire County Council



Alex Lea

Research & Insight Manager

Research & Insight Team
Strategy, Partnerships & Communities
Leicestershire County Council
County Hall
Glenfield
Leicester LE3 8RB

Tel 0116 305 6803

Email alex.lea@leics.gov.uk

Produced by the Research and Insight Team at Leicestershire County Council.

Whilst every effort has been made to ensure the accuracy of the information contained within this report, Leicestershire County Council cannot be held responsible for any errors or omission relating to the data contained within the report.

CONTENTS

Introduction

About this Report	4
2011 Census	4
Data	5
Census Geography	5
Indicator Changes 2001-11	6

Population

KS101EW - Usual Resident Population	7
KS102EW - Age Structure	7

Households

KS105EW - Household Composition	8
KS402EW - Tenure	9

Health and Caring

KS301EW - Health and Provision of Unpaid Care	9
---	---

Ethnicity

KS201EW - Ethnic Group	10
------------------------	----

Economy

KS601EW - Economic Activity	11
KS605EW - Industry	12

Transport

KS404EW - Car and Van Availability	13
QS701EW - Method of Travel to Work	13

INTRODUCTION

ABOUT THIS REPORT

This report provides a broad overview of the 2011 Census Key Statistics data, released by the Office for National Statistics on 30th January 2013, as part of the Second Release. This report summarises a selection of key headline datasets of this release for Leicestershire Electoral Divisions (EDs).

The Research and Insight Team at Leicestershire County Council has used data from the Second release to create an interactive Tableau dashboard containing 32 datasets covering the following geographies:

- England
- East Midlands
- East Midlands counties . Including Leicestershire
- Leicester City and Rutland Unitary Authorities
- Leicestershire districts

In addition, a headline report covers the results for Leicestershire and the seven districts that make up the county. The dashboard and report are available at the following links:

Census 2011 Key Statistics Dashboard

<http://public.tableausoftware.com/views/LAKeyStatsDashboard/Dashboard>

May 2013

Census 2011 Key Statistics Headline Report

http://www.lsr-online.org/reports/census_2011_key_statistics_headline_report/download/1/Census%202011%20Second%20Release%20FINAL.pdf

2011 CENSUS

Census statistics help paint a picture of the nation and how we live. They provide a detailed snapshot of the population and its characteristics, and underpin funding allocation to provide public services.¹ Data from the 2011 Census is made available at a variety of different levels of geography and in various releases.

The Key Statistics data covers a broad range of socio-economic topics, including data on ethnicity, health and employment. Each Key Statistic dataset is referred to by its unique three-digit code with the 'KS' prefix to denote a Key statistic (e.g. KS101). These are used throughout the report.

A full list of the 35 Key Statistics data tables are available here:

<http://www.ons.gov.uk/ons/publications/re-reference-tables.html?edition=tcm%3A77-286262>

¹ Office for National Statistics (ONS), 2013.

Further results from the census will be released throughout 2013, for more information, please visit:

<http://www.lsr-online.org/census-2011.html>

More information on the 2011 Census can be found here:

<http://www.ons.gov.uk/ons/guide-method/census/2011/index.html>

DATA

Data has been compiled for Leicestershire Electoral Divisions, covering the key datasets from the 2011 Census Key statistics.

Figures for 2011 and 2001 are included, along with the overall and percentage change between the two censuses. Data for each indicator is presented in a table and chart.

Population data is displayed in a table, a population pyramid and a chart showing percentage change between 2001 and 2011. All other data is displayed in tables, and charts. Charts for change between 2001 and 2011 are coloured according to the degree of change between the two censuses; grey corresponds to smallest change and green the largest change. A marker indicates the average figure for all Leicestershire Electoral Divisions.

GEOGRAPHY

Maps for all County Council Electoral Divisions can be found here:

http://www.leics.gov.uk/index/your_council/local_democracy/conductofcouncillorsandemployees/electoraldivisionmapsindex/electoraldivisionmaps.htm

As Census data is not made available for Electoral Divisions, smaller areas, called Lower Super Output Areas (LSOAs) have been used as building blocks for the figures included in this report. LSOAs are small parcels of geography, containing a minimum of 1,000 people, a maximum of 3,000 and an average of 1,500. LSOAs were initially developed for the 2001 Census and are used to release a range of neighbourhood-level datasets from various sources. There are 396 LSOAs in Leicestershire.

In some instances, LSOAs do not fit neatly within Electoral Divisions and in these cases, population weighted centroids - representing the 'centre of gravity' for population within an area - have been used in order to assign each LSOA to an Electoral Division. Electoral Divisions that fall within this category are indicated with a (*).

More information on Lower Super Output Areas can be found here:

<http://www.ons.gov.uk/ons/guide-method/geography/beginner-s-guide/census/super-output-areas--soas-/index.html>

INDICATOR CHANGES 2001-11

The following questions were asked in slightly different ways in 2011 compared to 2001. As such, care should be taken when making comparison between years.

KS201EW : Ethnic Group

Asian/Asian British: Chinese
Mixed/multiple ethnic group: Other Mixed
Mixed/multiple ethnic group: White and Asian
Mixed/multiple ethnic group: White and Black African
Mixed/multiple ethnic group: White and Black Caribbean
Other ethnic group: Any other ethnic group
White: English/Welsh/Scottish/Northern Irish/British
White: Other White

KS301EW : Health and Provision of Unpaid Care

Day-to-day activities limited
Day-to-day activities limited: Age 16 to 64
Day-to-day activities not limited
Fair health
Very/ bad Health
Very/ good Health

KS601EW : Economic Activity

All usual residents aged 16 and over
Economically active: Employee: Full-time
Economically active: Employee: Part-time
Economically active: Full-time student

Economically active: Self-employed
Economically active: Unemployed
Economically inactive: Long-term sick or disabled
Economically inactive: Looking after home or family
Economically inactive: Other
Economically inactive: Retired
Economically inactive: Student (including full-time)
Long-term unemployed
Unemployed: Age 50 and over
Unemployed: Never worked

KS605EW : Industry

All usual residents aged 16 and over in employment
A Agriculture, forestry and fishing
B Mining and quarrying
C Manufacturing
D, F Electricity, gas, steam, air conditioning supply etc
F Construction
G Wholesale and retail trade; repair of motor vehicles etc
H, J Transport, storage, information and communication
I Accommodation and food service activities
K Financial and insurance activities
L,M,N Real estate activities Professional, scientific etc
O Public administration and defence etc
P Education
Q Human health and social work activities
R, S, T, U Other

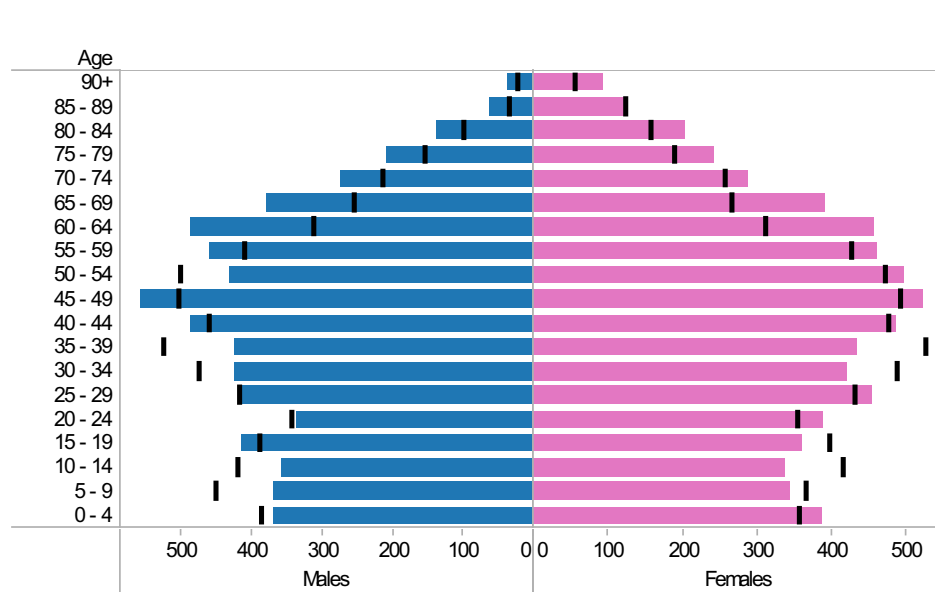
Shepshed ED: KS101EW : Usual Resident Population, KS102EW : Age Structure

■ Males
 ■ Females
 ■ Persons

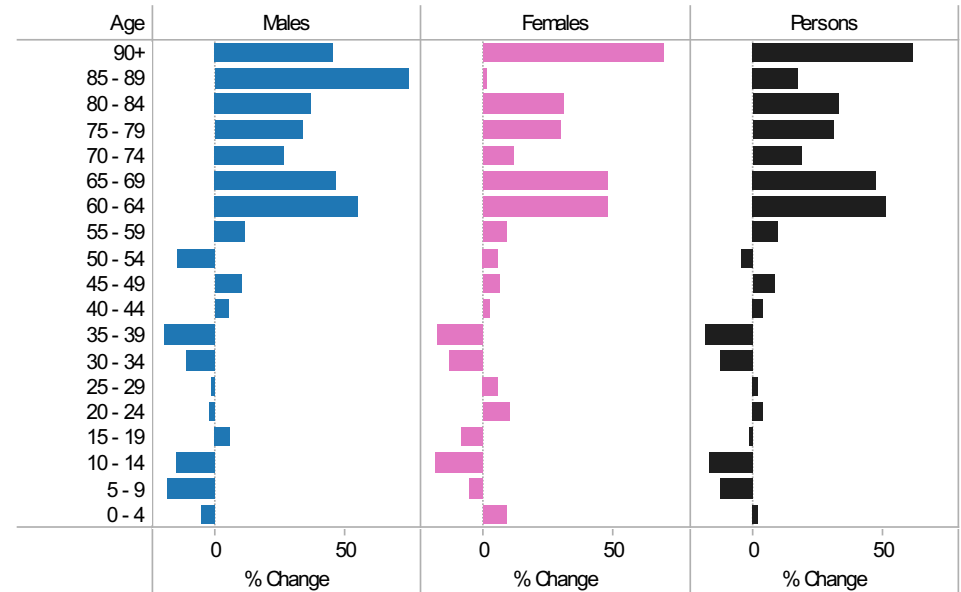
2001-11 Population by sex and quinary age band

Age	Males			Females			Persons		
	2001	2011	Change 2001-11	2001	2011	Change 2001-11	2001	2011	Change 2001-11
90+	24	35	11	55	93	38	79	128	49
85 - 89	36	63	27	121	122	1	157	185	28
80 - 84	100	137	37	156	204	48	256	341	85
75 - 79	156	209	53	187	242	55	343	451	108
70 - 74	215	273	58	256	286	30	471	559	88
65 - 69	257	378	121	264	390	126	521	768	247
60 - 64	313	487	174	309	456	147	622	943	321
55 - 59	412	459	47	425	462	37	837	921	84
50 - 54	504	431	-73	471	496	25	975	927	-48
45 - 49	506	559	53	491	522	31	997	1,081	84
40 - 44	462	487	25	474	485	11	936	972	36
35 - 39	526	423	-103	525	433	-92	1,051	856	-195
30 - 34	477	423	-54	485	421	-64	962	844	-118
25 - 29	420	414	-6	430	454	24	850	868	18
20 - 24	344	336	-8	353	388	35	697	724	27
15 - 19	391	414	23	395	360	-35	786	774	-12
10 - 14	422	357	-65	413	337	-76	835	694	-141
5 - 9	452	370	-82	364	344	-20	816	714	-102
0 - 4	388	368	-20	355	387	32	743	755	12
All Ages	6,405	6,623	218	6,529	6,882	353	12,934	13,505	571

2011 (coloured bars) and 2001 (black marks) population by sex and quinary age

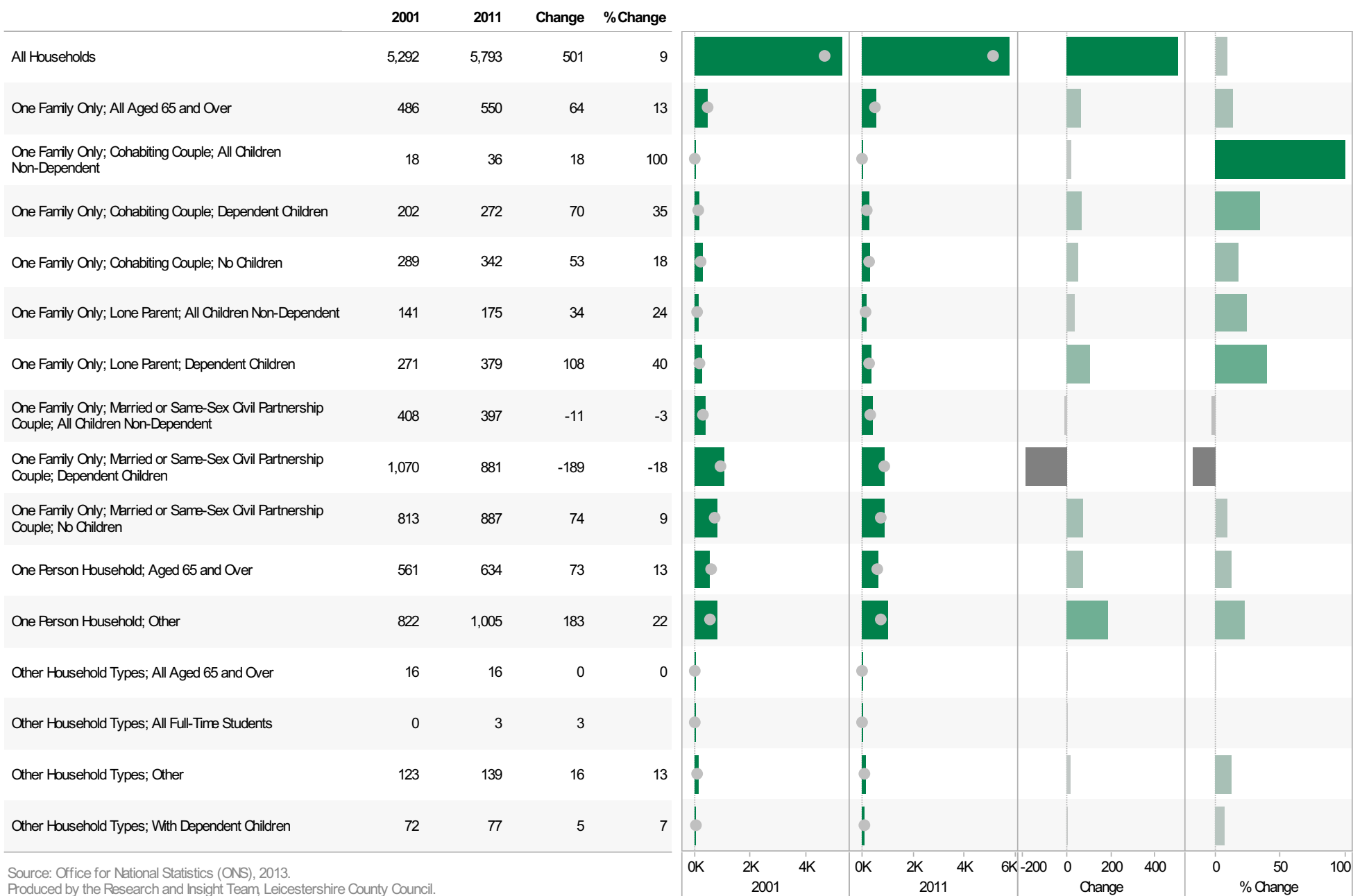


2001-11 Percentage change by sex and quinary age band



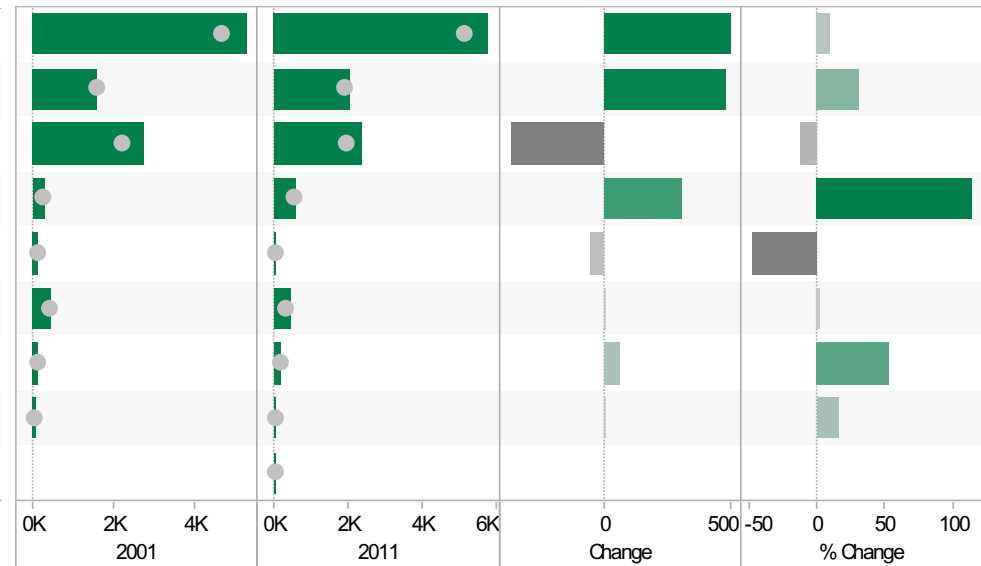
Shepshed ED KS105EW : Household Composition, 2001-11

Coloured bar - data for Electoral Division
Grey circle - average for all Leicestershire Electoral Divisions



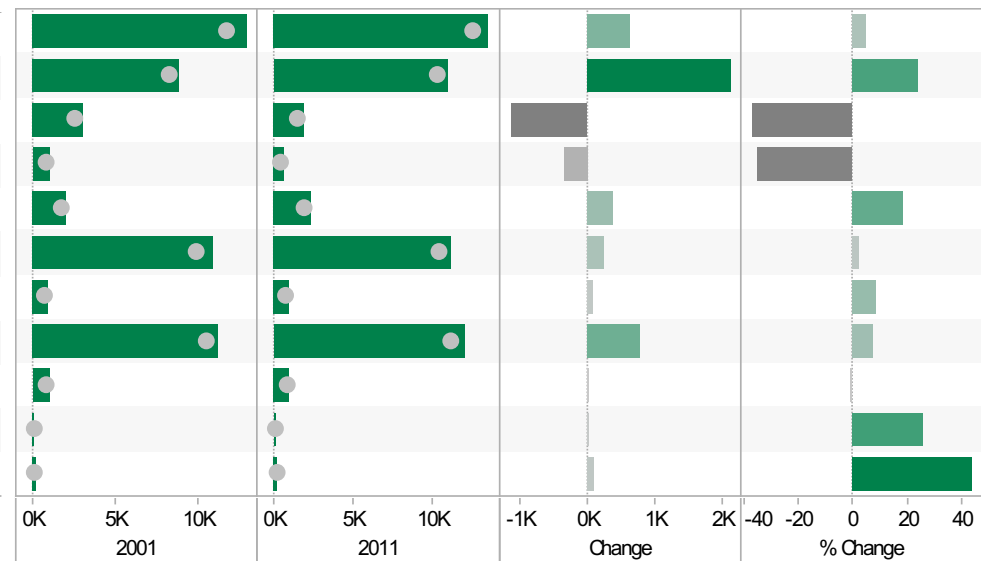
**Shepshed ED
KS402EW: Tenure, 2001-11**

	2001	2011	Change	% Change
All Households	5,299	5,793	494	9
Owned; Owned Outright	1,565	2,040	475	30
Owned; Owned with a Mortgage or Loan	2,739	2,373	-366	-13
Private Rented; Private Landlord or Letting Agency	270	577	307	114
Private Rented; Other	111	57	-54	-49
Social Rented; Rented from Council (Local Authority)	460	468	8	2
Social Rented; Other	109	167	58	53
Shared Ownership (Part Owned and Part Rented)	45	52	7	16
Living Rent Free		59		



**Shepshed ED
KS301EW: Health and Provision of Unpaid Care, 2001-11**

	2001	2011	Change	% Change
All usual residents	12,882	13,505	623	5
Very/ good Health	8,826	10,933	2,107	24
Fair health	3,049	1,918	-1,131	-37
Very/ bad Health	1,007	654	-353	-35
Day-to-day activities limited	2,035	2,406	371	18
Day-to-day activities not limited	10,847	11,099	252	2
Day-to-day activities limited a lot: Age 16 to 64	937	1,016	79	8
Provides no unpaid care	11,223	12,007	784	7
Provides 1 to 19 hours unpaid care a week	1,040	1,032	-8	-1
Provides 20 to 49 hours unpaid care a week	131	165	34	26
Provides 50 or more hours unpaid care a week	210	301	91	43



Source: Office for National Statistics (ONS), 2013.
Produced by the Research and Insight Team, Leicestershire County Council.

Shepshed ED
KS201EW : Ethnic Group, 2001-11

Coloured bar - data for Electoral Division
Grey circle - average for all Leicestershire Electoral Divisions

	2001	2011	Change	% Change
All usual residents	12,885	13,505	620	5
White: English/Welsh/Scottish/Northern Irish/British	12,455	12,943	488	4
White: Irish	45	48	3	7
White: Other White	124	179	55	44
Asian/Asian British: Bangladeshi	3	9	6	200
Asian/Asian British: Chinese	38	39	1	3
Asian/Asian British: Indian	77	92	15	19
Asian/Asian British: Other Asian	3	24	21	700
Asian/Asian British: Pakistani	12	6	-6	-50
Black/African/Caribbean/Black British: African	22	8	-14	-64
Black/African/Caribbean/Black British: Caribbean	10	15	5	50
Black/African/Caribbean/Black British: Other Black	0	2	2	
Mixed/multiple ethnic group: Other Mixed	9	23	14	156
Mixed/multiple ethnic group: White and Asian	40	54	14	35
Mixed/multiple ethnic group: White and Black African	6	13	7	117
Mixed/multiple ethnic group: White and Black Caribbean	23	38	15	65
Other ethnic group: Any other ethnic group	18	12	-6	-33

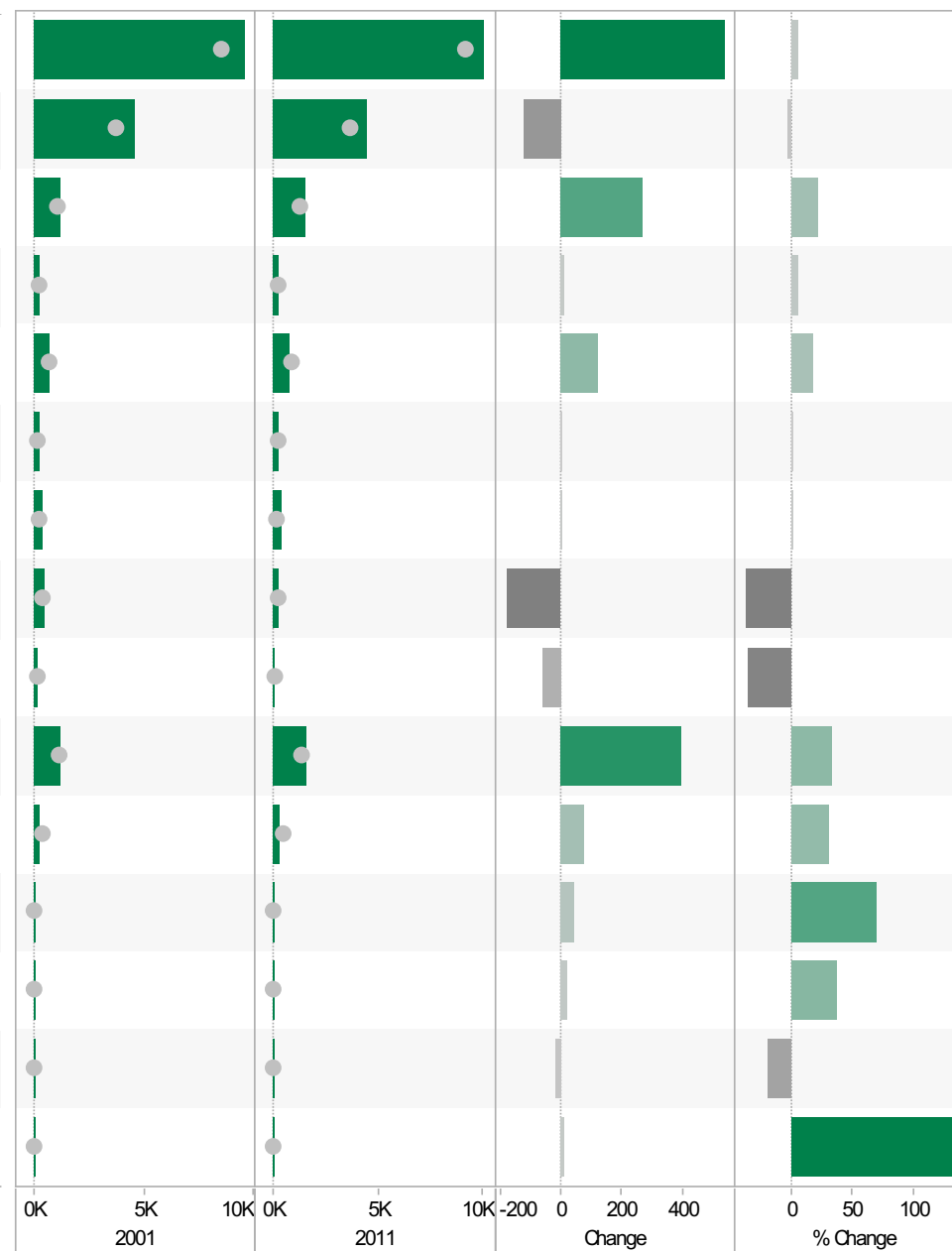


Source: Office for National Statistics (ONS), 2013.
Produced by the Research and Insight Team, Leicestershire County Council.

Shepshed ED
KS601EW : Economic Activity, 2001-11

Coloured bar - data for Electoral Division
Grey circle - average for all Leicestershire Electoral Divisions

	2001	2011	Change	% Change
All usual residents aged 16 and over	9,545	10,082	537	6
Economically active: Employee: Full-time	4,589	4,470	-119	-3
Economically active: Employee: Part-time	1,247	1,517	270	22
Economically active: Full-time student	234	248	14	6
Economically active: Self-employed	697	821	124	18
Economically active: Unemployed	273	273	0	0
Economically inactive: Long-term sick or disabled	386	394	8	2
Economically inactive: Looking after home or family	482	304	-178	-37
Economically inactive: Other	174	114	-60	-34
Economically inactive: Retired	1,198	1,597	399	33
Economically inactive: Student (including full-time students)	265	344	79	30
Long-term unemployed	61	104	43	70
Unemployed: Age 16 to 24	54	74	20	37
Unemployed: Age 50 and over	74	60	-14	-19
Unemployed: Never worked	10	24	14	140

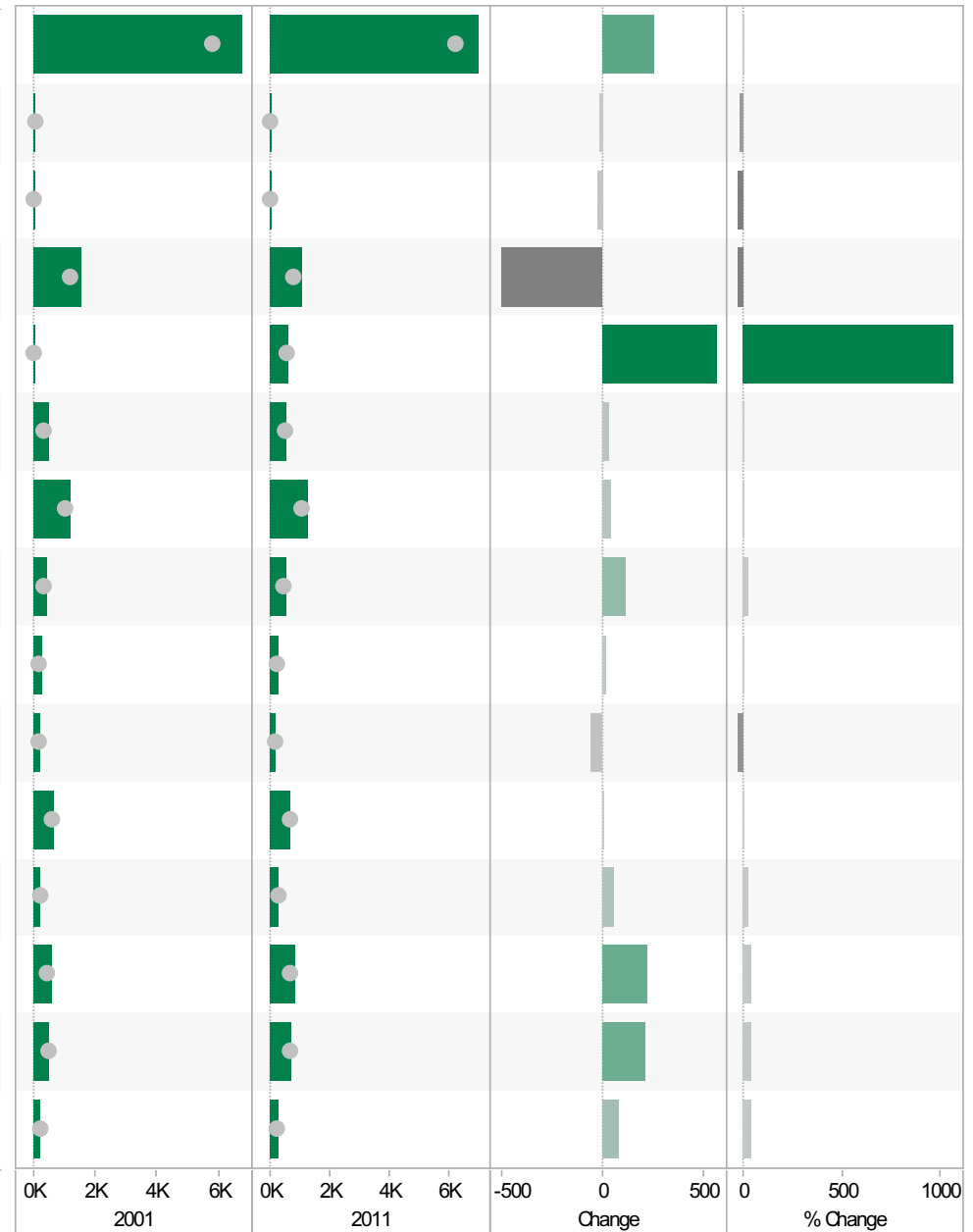


Source: Office for National Statistics (ONS), 2013.
Produced by the Research and Insight Team, Leicestershire County Council.

Shepshed ED
KS605EW : Industry, 2001-11

Coloured bar - data for Electoral Division
Grey circle - average for all Leicestershire Electoral Divisions

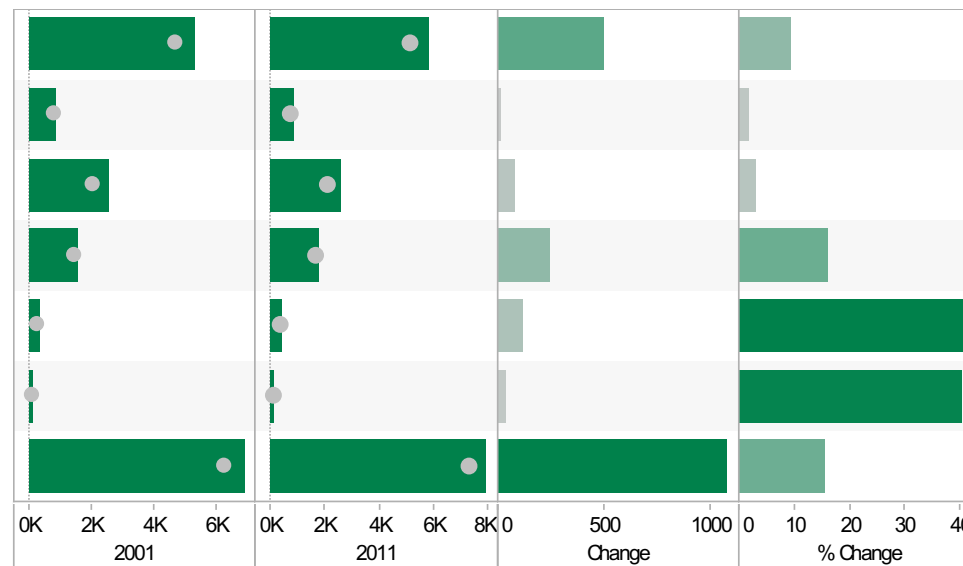
	2001	2011	Change	% Change
All usual residents aged 16 and over in employment	6,747	7,005	258	4
A Agriculture, forestry and fishing	54	43	-11	-20
B Mining and quarrying	64	43	-21	-33
C Manufacturing	1,559	1,058	-501	-32
D, F Electricity, gas, steam, air conditioning supply, water and sewerage	53	617	564	1,064
F Construction	528	560	32	6
G Wholesale and retail trade; repair of motor vehicles and motor cycles	1,217	1,263	46	4
H, J Transport, storage, information and communication	462	581	119	26
I Accommodation and food service activities	274	296	22	8
K Financial and insurance activities	237	179	-58	-24
L, M, N Real estate activities Professional, scientific and technical activities Administrative and support service activities	663	668	5	1
O Public administration and defence; compulsory social security	242	301	59	24
P Education	639	861	222	35
Q Human health and social work activities	532	744	212	40
R, S, T, U Other	223	308	85	38



Source: Office for National Statistics (ONS), 2013.
Produced by the Research and Insight Team, Leicestershire County Council.

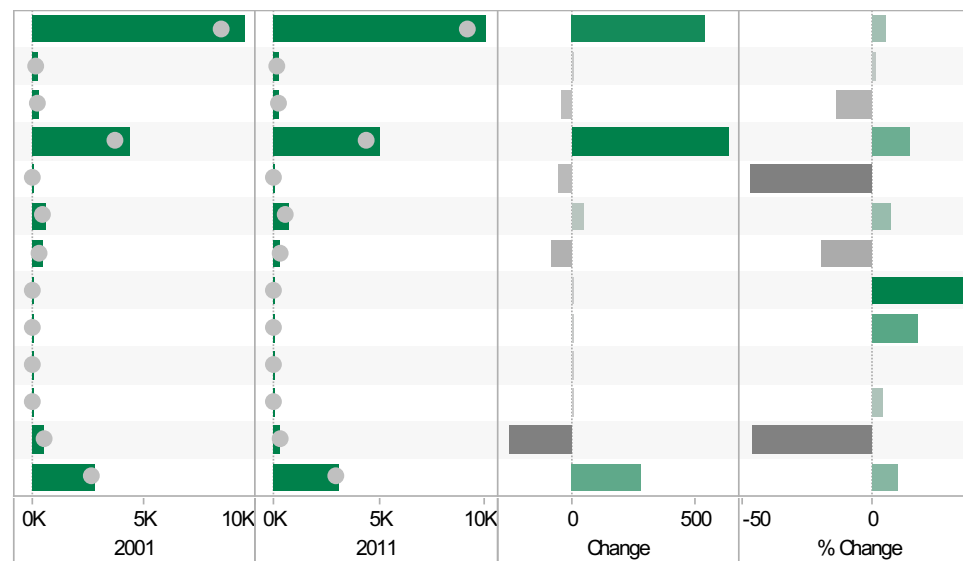
Shepshed ED KS404EW : Car and Van Availability, 2001-11

	2001	2011	Change	% Change
All Households	5,296	5,793	497	9
No Cars or Vans in Household	857	874	17	2
1 Car or Van in Household	2,530	2,606	76	3
2 Cars or Vans in Household	1,526	1,772	246	16
3 Cars or Vans in Household	291	412	121	42
4 or More Cars or Vans in Household	92	129	37	40
All Cars or Vans in the Area	6,871	7,951	1,080	16



Shepshed ED QS701EW : Method of Travel to Work, 2001-11

	2001	2011	Change	% Change
All Usual Residents Aged 16 to 74	9,540	10,082	542	6
Bicycle	237	241	4	2
Bus, Minibus or Coach	303	263	-40	-13
Driving a Car or Van	4,419	5,051	632	14
Motorcycle, Scooter or Moped	113	60	-53	-47
On Foot	631	676	45	7
Passenger in a Car or Van	423	341	-82	-19
Taxi	8	11	3	38
Train	28	33	5	18
Underground, Metro, Light Rail, Tram	0	2	2	
Other Method of Travel to Work	25	26	1	4
Work Mainly at or From Home	557	301	-256	-46
Not in Employment	2,796	3,077	281	10



If you require information contained in this leaflet in another version e.g. large print, Braille, tape or alternative language please telephone: 0116 305 6803, Fax: 0116 305 7271 or Minicom: 0116 305 6160.

ਜੇ ਆਪ ਆ ਮਾਭਿਨੀ ਆਪਨੀ ਆਧਾਮਾਂ ਸਮਝਵਾਮਾਂ ਥੋੜੀ ਮਦਦ ਈਝਤਾਂ ਡੋ ਤੋ 0116 305 6803 ਨੰਬਰ ਪਰ ਫ਼ੋਨ ਕਰਥੋ ਅਨੇ ਅਮੇ ਆਪਨੇ ਮਦਦ ਕਰਵਾ ਆਵਥਾ ਕਰੀਥੁੰ.

ਜੇਕਰ ਤੁਹਾਨੂੰ ਇਸ ਜਾਣਕਾਰੀ ਨੂੰ ਸਮਝਣ ਵਿਚ ਕੁਝ ਮਦਦ ਚਾਹੀਦੀ ਹੈ ਤਾਂ ਕਿਰਪਾ ਕਰਕੇ 0116 305 6803 ਨੰਬਰ ਤੇ ਫ਼ੋਨ ਕਰੋ ਅਤੇ ਅਸੀਂ ਤੁਹਾਡੀ ਮਦਦ ਲਈ ਕਿਸੇ ਦਾ ਪ੍ਰਬੰਧ ਕਰ ਦਵਾਂਗੇ।

এই তথ্য নিজের ভাষায় বুঝার জন্য আপনার যদি কোন সাহায্যের প্রয়োজন হয়, তবে 0116 305 6803 এই নম্বরে ফোন করলে আমরা উপযুক্ত ব্যক্তির ব্যবস্থা করবো।

اگر آپ کو یہ معلومات سمجھنے میں کچھ مدد درکار ہے تو براہ مہربانی اس نمبر پر کال کریں اور ہم آپ کی مدد کے لئے کسی کا انتظام کر دیں گے۔ 0116 305 6803

假如閣下需要幫助，用你的語言去明白這些資訊，請致電 0116 305 6803，我們會安排有關人員為你提供幫助。

Jeżeli potrzebujesz pomocy w zrozumieniu tej informacji w Twoim języku, zadzwoń pod numer 0116 305 6803, a my Ci dopomożemy.

Research & Insight Team
Strategy, Partnerships & Communities
Chief Executive's Department
Leicestershire County Council
County Hall
Glenfield
Leicester
LE3 8RA

ri@leics.gov.uk
www.lsr-online.org