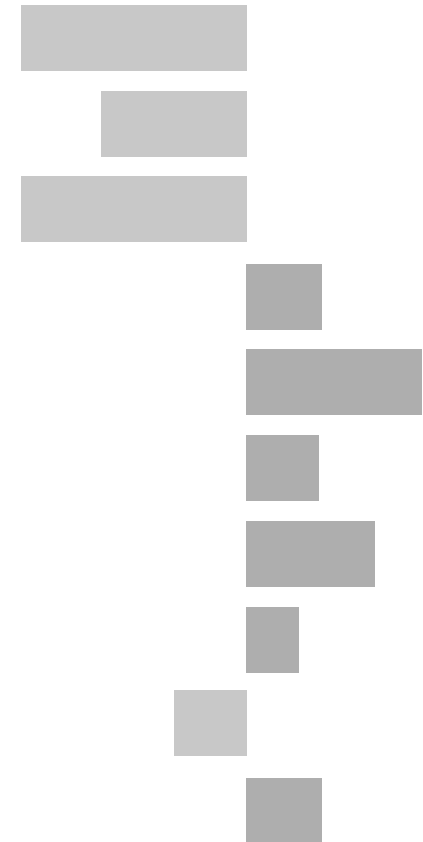


System Fosse Electoral Division

2011 Census Key Statistics

Alex Lea
May 2013

Research and Insight Team
Leicestershire County Council



Alex Lea

Research & Insight Manager

Research & Insight Team
Strategy, Partnerships & Communities
Leicestershire County Council
County Hall
Glenfield
Leicester LE3 8RB

Tel 0116 305 6803

Email alex.lea@leics.gov.uk

Produced by the Research and Insight Team at Leicestershire County Council.

Whilst every effort has been made to ensure the accuracy of the information contained within this report, Leicestershire County Council cannot be held responsible for any errors or omission relating to the data contained within the report.

CONTENTS

Introduction

| | |
|---------------------------|---|
| About this Report | 4 |
| 2011 Census | 4 |
| Data | 5 |
| Census Geography | 5 |
| Indicator Changes 2001-11 | 6 |

Population

| | |
|-------------------------------------|---|
| KS101EW - Usual Resident Population | 7 |
| KS102EW - Age Structure | 7 |

Households

| | |
|---------------------------------|---|
| KS105EW - Household Composition | 8 |
| KS402EW - Tenure | 9 |

Health and Caring

| | |
|---|---|
| KS301EW - Health and Provision of Unpaid Care | 9 |
|---|---|

Ethnicity

| | |
|------------------------|----|
| KS201EW - Ethnic Group | 10 |
|------------------------|----|

Economy

| | |
|-----------------------------|----|
| KS601EW - Economic Activity | 11 |
| KS605EW - Industry | 12 |

Transport

| | |
|------------------------------------|----|
| KS404EW - Car and Van Availability | 13 |
| QS701EW- Method of Travel to Work | 13 |

INTRODUCTION

ABOUT THIS REPORT

This report provides a broad overview of the 2011 Census Key Statistics data, released by the Office for National Statistics on 30th January 2013, as part of the Second Release. This report summarises a selection of key headline datasets of this release for Leicestershire Electoral Divisions (EDs).

The Research and Insight Team at Leicestershire County Council has used data from the Second release to create an interactive Tableau dashboard containing 32 datasets covering the following geographies:

- England
- East Midlands
- East Midlands counties . Including Leicestershire
- Leicester City and Rutland Unitary Authorities
- Leicestershire districts

In addition, a headline report covers the results for Leicestershire and the seven districts that make up the county. The dashboard and report are available at the following links:

Census 2011 Key Statistics Dashboard

<http://public.tableausoftware.com/views/LAKeyStatsDashboard/Dashboard>

May 2013

Census 2011 Key Statistics Headline Report

http://www.lsr-online.org/reports/census_2011_key_statistics_headline_report/download/1/Census%202011%20Second%20Release%20FINAL.pdf

2011 CENSUS

Census statistics help paint a picture of the nation and how we live. They provide a detailed snapshot of the population and its characteristics, and underpin funding allocation to provide public services.¹ Data from the 2011 Census is made available at a variety of different levels of geography and in various releases.

The Key Statistics data covers a broad range of socio-economic topics, including data on ethnicity, health and employment. Each Key Statistic dataset is referred to by its unique three-digit code with the 'KS' prefix to denote a Key statistic (e.g. KS101). These are used throughout the report.

A full list of the 35 Key Statistics data tables are available here:

<http://www.ons.gov.uk/ons/publications/re-reference-tables.html?edition=tcm%3A77-286262>

¹ Office for National Statistics (ONS), 2013.

Further results from the census will be released throughout 2013, for more information, please visit:

<http://www.lsr-online.org/census-2011.html>

More information on the 2011 Census can be found here:

<http://www.ons.gov.uk/ons/guide-method/census/2011/index.html>

DATA

Data has been compiled for Leicestershire Electoral Divisions, covering the key datasets from the 2011 Census Key statistics.

Figures for 2011 and 2001 are included, along with the overall and percentage change between the two censuses. Data for each indicator is presented in a table and chart.

Population data is displayed in a table, a population pyramid and a chart showing percentage change between 2001 and 2011. All other data is displayed in tables, and charts. Charts for change between 2001 and 2011 are coloured according to the degree of change between the two censuses; grey corresponds to smallest change and green the largest change. A marker indicates the average figure for all Leicestershire Electoral Divisions.

GEOGRAPHY

Maps for all County Council Electoral Divisions can be found here:

http://www.leics.gov.uk/index/your_council/local_democracy/conductofcouncillorsandemployees/electoraldivisionmapsindex/electoraldivisionmaps.htm

As Census data is not made available for Electoral Divisions, smaller areas, called Lower Super Output Areas (LSOAs) have been used as building blocks for the figures included in this report. LSOAs are small parcels of geography, containing a minimum of 1,000 people, a maximum of 3,000 and an average of 1,500. LSOAs were initially developed for the 2001 Census and are used to release a range of neighbourhood-level datasets from various sources. There are 396 LSOAs in Leicestershire.

In some instances, LSOAs do not fit neatly within Electoral Divisions and in these cases, population weighted centroids - representing the 'centre of gravity' for population within an area - have been used in order to assign each LSOA to an Electoral Division. Electoral Divisions that fall within this category are indicated with a (*).

More information on Lower Super Output Areas can be found here:

<http://www.ons.gov.uk/ons/guide-method/geography/beginner-s-guide/census/super-output-areas--soas-/index.html>

INDICATOR CHANGES 2001-11

The following questions were asked in slightly different ways in 2011 compared to 2001. As such, care should be taken when making comparison between years.

KS201EW : Ethnic Group

Asian/Asian British: Chinese
Mixed/multiple ethnic group: Other Mixed
Mixed/multiple ethnic group: White and Asian
Mixed/multiple ethnic group: White and Black African
Mixed/multiple ethnic group: White and Black Caribbean
Other ethnic group: Any other ethnic group
White: English/Welsh/Scottish/Northern Irish/British
White: Other White

KS301EW : Health and Provision of Unpaid Care

Day-to-day activities limited
Day-to-day activities limited: Age 16 to 64
Day-to-day activities not limited
Fair health
Very/ bad Health
Very/ good Health

KS601EW : Economic Activity

All usual residents aged 16 and over
Economically active: Employee: Full-time
Economically active: Employee: Part-time
Economically active: Full-time student

Economically active: Self-employed
Economically active: Unemployed
Economically inactive: Long-term sick or disabled
Economically inactive: Looking after home or family
Economically inactive: Other
Economically inactive: Retired
Economically inactive: Student (including full-time)
Long-term unemployed
Unemployed: Age 50 and over
Unemployed: Never worked

KS605EW : Industry

All usual residents aged 16 and over in employment
A Agriculture, forestry and fishing
B Mining and quarrying
C Manufacturing
D, F Electricity, gas, steam, air conditioning supply etc
F Construction
G Wholesale and retail trade; repair of motor vehicles etc
H, J Transport, storage, information and communication
I Accommodation and food service activities
K Financial and insurance activities
L,M,N Real estate activities Professional, scientific etc
O Public administration and defence etc
P Education
Q Human health and social work activities
R, S, T, U Other

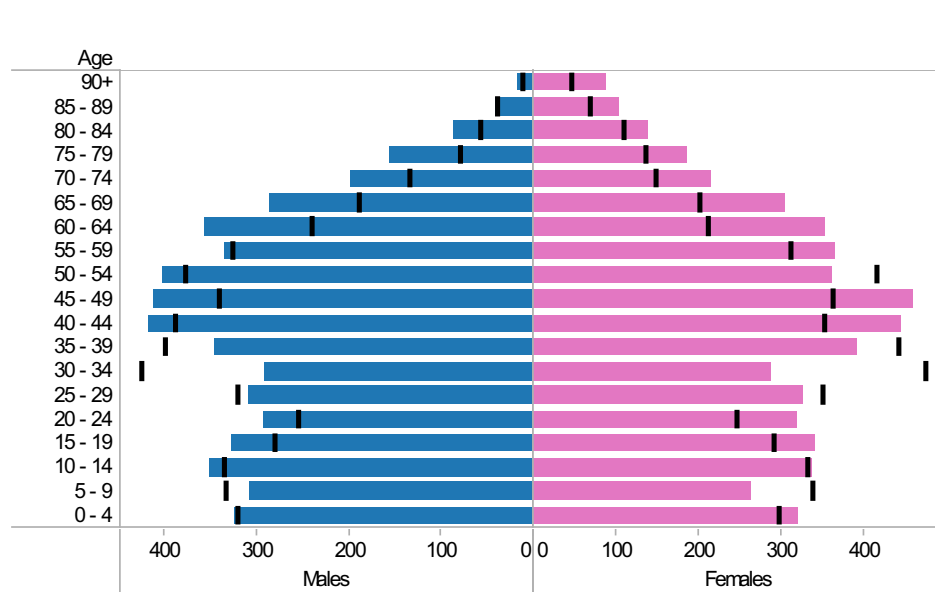
System Fosse* ED: KS101EW : Usual Resident Population, KS102EW : Age Structure

■ Males
 ■ Females
 ■ Persons

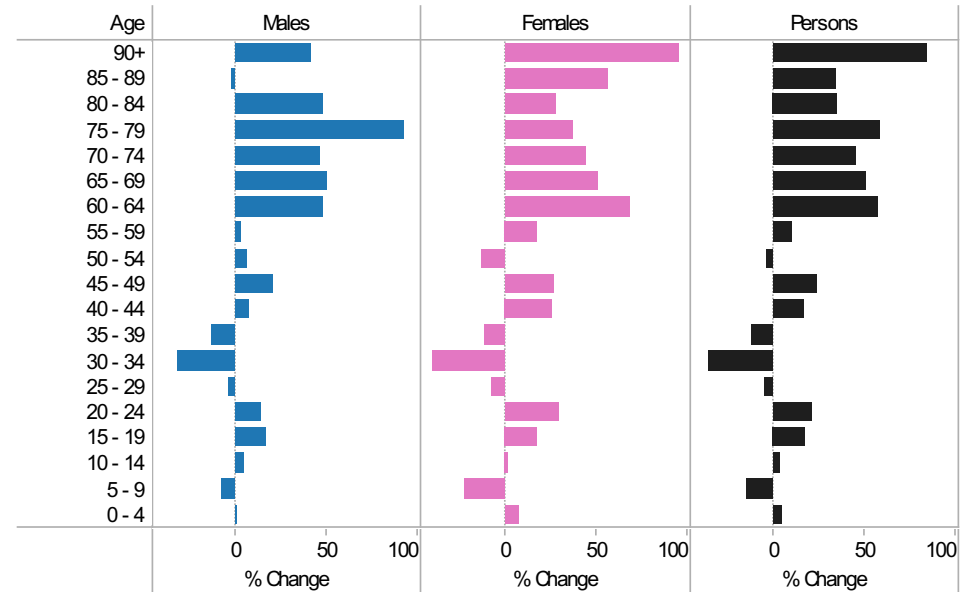
2001-11 Population by sex and quinary age band

| Age | Males | | | Females | | | Persons | | |
|----------|-------|-------|----------------|---------|-------|----------------|---------|--------|----------------|
| | 2001 | 2011 | Change 2001-11 | 2001 | 2011 | Change 2001-11 | 2001 | 2011 | Change 2001-11 |
| 90+ | 12 | 17 | 5 | 45 | 88 | 43 | 57 | 105 | 48 |
| 85 - 89 | 41 | 40 | -1 | 67 | 105 | 38 | 108 | 145 | 37 |
| 80 - 84 | 58 | 86 | 28 | 108 | 138 | 30 | 166 | 224 | 58 |
| 75 - 79 | 81 | 156 | 75 | 135 | 186 | 51 | 216 | 342 | 126 |
| 70 - 74 | 135 | 198 | 63 | 148 | 214 | 66 | 283 | 412 | 129 |
| 65 - 69 | 190 | 285 | 95 | 201 | 304 | 103 | 391 | 589 | 198 |
| 60 - 64 | 241 | 357 | 116 | 210 | 354 | 144 | 451 | 711 | 260 |
| 55 - 59 | 328 | 335 | 7 | 310 | 366 | 56 | 638 | 701 | 63 |
| 50 - 54 | 379 | 403 | 24 | 414 | 361 | -53 | 793 | 764 | -29 |
| 45 - 49 | 343 | 412 | 69 | 362 | 460 | 98 | 705 | 872 | 167 |
| 40 - 44 | 389 | 417 | 28 | 351 | 445 | 94 | 740 | 862 | 122 |
| 35 - 39 | 401 | 346 | -55 | 441 | 393 | -48 | 842 | 739 | -103 |
| 30 - 34 | 427 | 291 | -136 | 475 | 289 | -186 | 902 | 580 | -322 |
| 25 - 29 | 322 | 310 | -12 | 350 | 327 | -23 | 672 | 637 | -35 |
| 20 - 24 | 257 | 292 | 35 | 245 | 318 | 73 | 502 | 610 | 108 |
| 15 - 19 | 281 | 328 | 47 | 290 | 341 | 51 | 571 | 669 | 98 |
| 10 - 14 | 336 | 351 | 15 | 331 | 338 | 7 | 667 | 689 | 22 |
| 5 - 9 | 335 | 308 | -27 | 338 | 264 | -74 | 673 | 572 | -101 |
| 0 - 4 | 322 | 324 | 2 | 297 | 320 | 23 | 619 | 644 | 25 |
| All Ages | 4,878 | 5,256 | 378 | 5,118 | 5,611 | 493 | 9,996 | 10,867 | 871 |

2011 (coloured bars) and 2001 (black marks) population by sex and quinary age band



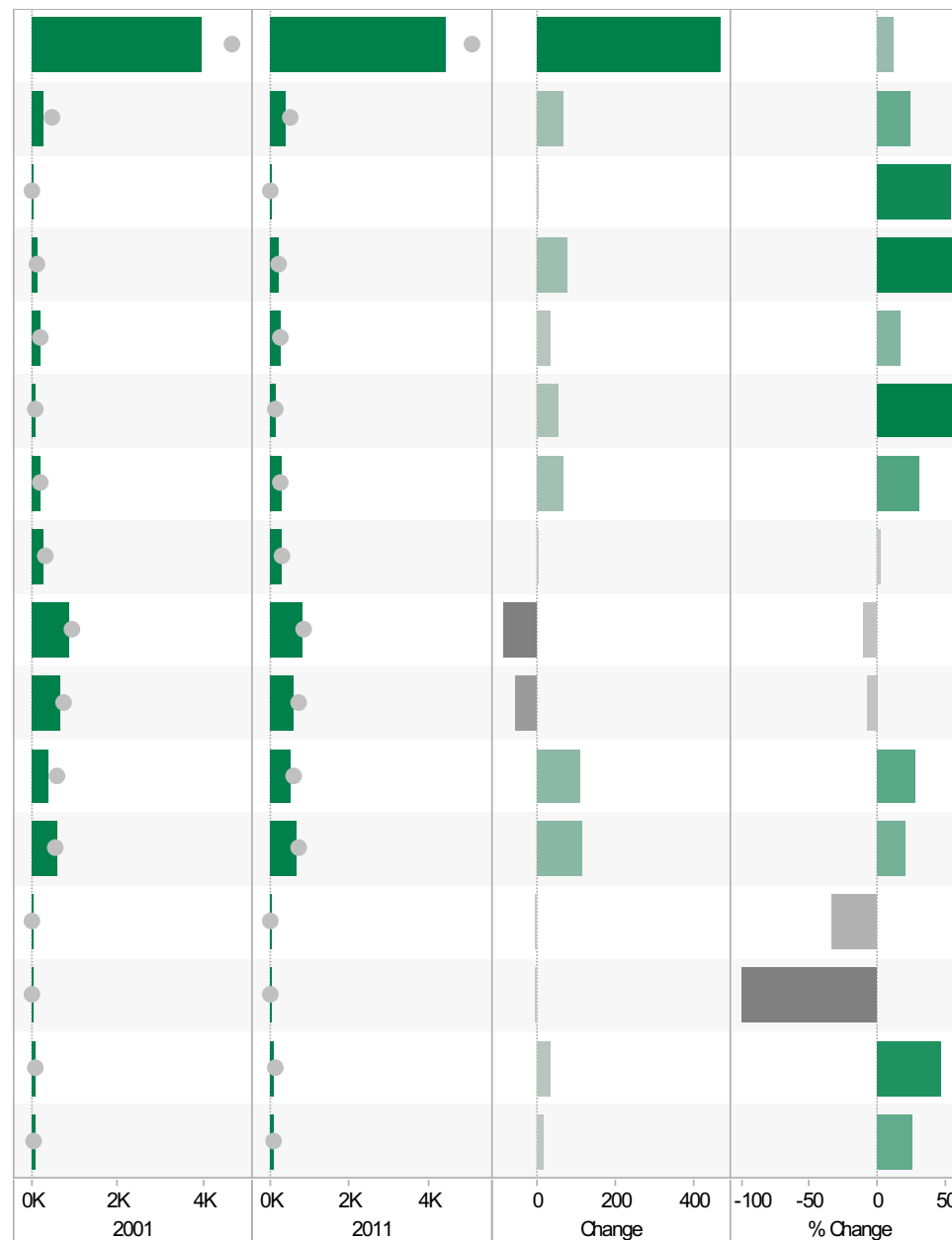
2001-11 Percentage change by sex and quinary age band



Syston Fosse* ED
KS105EW : Household Composition, 2001-11

Coloured bar - data for Electoral Division
Grey circle - average for all Leicestershire Electoral Divisions

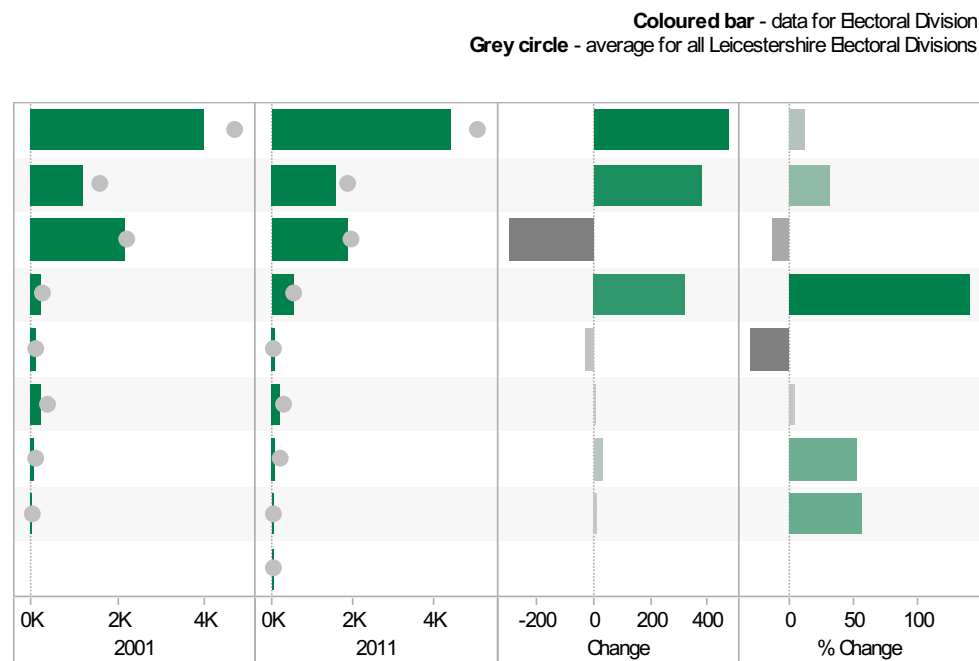
| | 2001 | 2011 | Change | % Change |
|---|-------|-------|--------|----------|
| All Households | 3,977 | 4,444 | 467 | 12 |
| One Family Only; All Aged 65 and Over | 296 | 368 | 72 | 24 |
| One Family Only; Cohabiting Couple; All Children Non-Dependent | 15 | 23 | 8 | 53 |
| One Family Only; Cohabiting Couple; Dependent Children | 136 | 214 | 78 | 57 |
| One Family Only; Cohabiting Couple; No Children | 211 | 246 | 35 | 17 |
| One Family Only; Lone Parent; All Children Non-Dependent | 95 | 151 | 56 | 59 |
| One Family Only; Lone Parent; Dependent Children | 229 | 297 | 68 | 30 |
| One Family Only; Married or Same-Sex Civil Partnership Couple; All Children Non-Dependent | 292 | 298 | 6 | 2 |
| One Family Only; Married or Same-Sex Civil Partnership Couple; Dependent Children | 877 | 792 | -85 | -10 |
| One Family Only; Married or Same-Sex Civil Partnership Couple; No Children | 669 | 616 | -53 | -8 |
| One Person Household; Aged 65 and Over | 407 | 520 | 113 | 28 |
| One Person Household; Other | 581 | 699 | 118 | 20 |
| Other Household Types; All Aged 65 and Over | 6 | 4 | -2 | -33 |
| Other Household Types; All Full-Time Students | 3 | 0 | -3 | -100 |
| Other Household Types; Other | 76 | 111 | 35 | 46 |
| Other Household Types; With Dependent Children | 84 | 105 | 21 | 25 |



Source: Office for National Statistics (ONS), 2013.
 Produced by the Research and Insight Team, Leicestershire County Council.

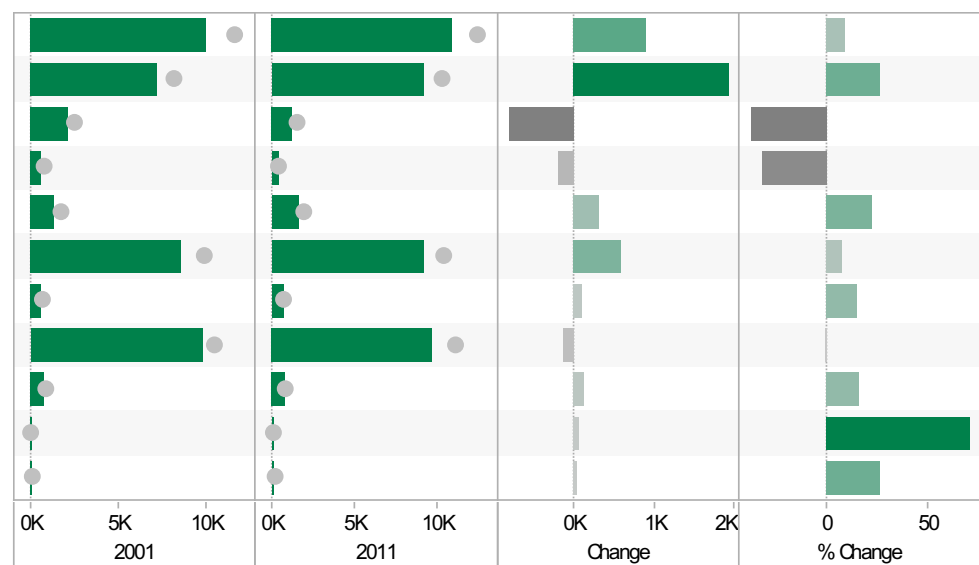
System Fosse* ED
KS402EW: Tenure, 2001-11

| | 2001 | 2011 | Change | % Change |
|--|-------|-------|--------|----------|
| All Households | 3,971 | 4,444 | 473 | 12 |
| Owned; Owned Outright | 1,197 | 1,577 | 380 | 32 |
| Owned; Owned with a Mortgage or Loan | 2,163 | 1,864 | -299 | -14 |
| Private Rented; Private Landlord or Letting Agency | 229 | 552 | 323 | 141 |
| Private Rented; Other | 89 | 61 | -28 | -31 |
| Social Rented; Rented from Council (Local Authority) | 208 | 216 | 8 | 4 |
| Social Rented; Other | 62 | 95 | 33 | 53 |
| Shared Ownership (Part Owned and Part Rented) | 23 | 36 | 13 | 57 |
| Living Rent Free | | 43 | | |



System Fosse* ED
KS301EW: Health and Provision of Unpaid Care, 2001-11

| | 2001 | 2011 | Change | % Change |
|---|-------|--------|--------|----------|
| All usual residents | 9,970 | 10,867 | 897 | 9 |
| Very/ good Health | 7,218 | 9,137 | 1,919 | 27 |
| Fair health | 2,129 | 1,309 | -820 | -39 |
| Very/ bad Health | 623 | 421 | -202 | -32 |
| Day-to-day activities limited | 1,387 | 1,695 | 308 | 22 |
| Day-to-day activities not limited | 8,583 | 9,172 | 589 | 7 |
| Day-to-day activities limited a lot: Age 16 to 64 | 628 | 723 | 95 | 15 |
| Provides no unpaid care | 9,800 | 9,670 | -130 | -1 |
| Provides 1 to 19 hours unpaid care a week | 749 | 863 | 114 | 15 |
| Provides 20 to 49 hours unpaid care a week | 78 | 133 | 55 | 71 |
| Provides 50 or more hours unpaid care a week | 159 | 201 | 42 | 26 |



Source: Office for National Statistics (ONS), 2013.
Produced by the Research and Insight Team, Leicestershire County Council.

Syston Fosse* ED
KS201EW : Ethnic Group, 2001-11

Coloured bar - data for Electoral Division
Grey circle - average for all Leicestershire Electoral Divisions

| | 2001 | 2011 | Change | % Change |
|--|-------|--------|--------|----------|
| All usual residents | 9,978 | 10,867 | 889 | 9 |
| White: English/Welsh/Scottish/Northern Irish/British | 8,767 | 9,223 | 456 | 5 |
| White: Irish | 73 | 59 | -14 | -19 |
| White: Other White | 116 | 108 | -8 | -7 |
| Asian/Asian British: Bangladeshi | 0 | 1 | 1 | |
| Asian/Asian British: Chinese | 43 | 28 | -15 | -35 |
| Asian/Asian British: Indian | 815 | 1,176 | 361 | 44 |
| Asian/Asian British: Other Asian | 30 | 44 | 14 | 47 |
| Asian/Asian British: Pakistani | 13 | 20 | 7 | 54 |
| Black/African/Caribbean/Black British: African | 3 | 4 | 1 | 33 |
| Black/African/Caribbean/Black British: Caribbean | 27 | 22 | -5 | -19 |
| Black/African/Caribbean/Black British: Other Black | 3 | 4 | 1 | 33 |
| Mixed/multiple ethnic group: Other Mixed | 19 | 18 | -1 | -5 |
| Mixed/multiple ethnic group: White and Asian | 27 | 42 | 15 | 56 |
| Mixed/multiple ethnic group: White and Black African | 6 | 15 | 9 | 150 |
| Mixed/multiple ethnic group: White and Black Caribbean | 29 | 66 | 37 | 128 |
| Other ethnic group: Any other ethnic group | 7 | 37 | 30 | 429 |

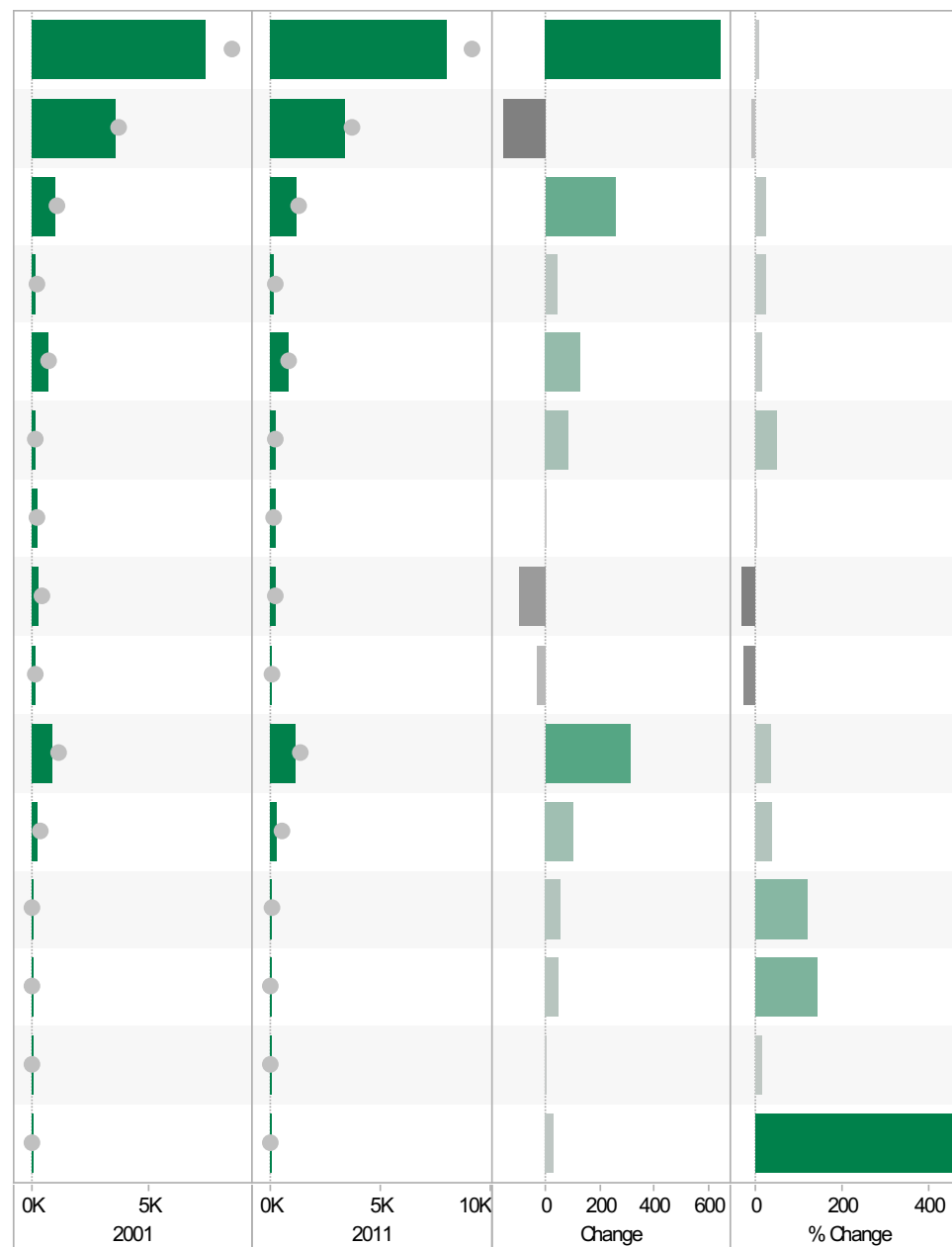


Source: Office for National Statistics (ONS), 2013.
 Produced by the Research and Insight Team, Leicestershire County Council.

Syston Fosse* ED
KS601EW : Economic Activity, 2001-11

Coloured bar - data for Electoral Division
Grey circle - average for all Leicestershire Electoral Divisions

| | 2001 | 2011 | Change | % Change |
|---|-------|-------|--------|----------|
| All usual residents aged 16 and over | 7,360 | 8,002 | 642 | 9 |
| Economically active: Employee: Full-time | 3,546 | 3,388 | -158 | -4 |
| Economically active: Employee: Part-time | 997 | 1,257 | 260 | 26 |
| Economically active: Full-time student | 170 | 209 | 39 | 23 |
| Economically active: Self-employed | 722 | 851 | 129 | 18 |
| Economically active: Unemployed | 165 | 251 | 86 | 52 |
| Economically inactive: Long-term sick or disabled | 222 | 223 | 1 | 0 |
| Economically inactive: Looking after home or family | 315 | 217 | -98 | -31 |
| Economically inactive: Other | 134 | 100 | -34 | -25 |
| Economically inactive: Retired | 844 | 1,159 | 315 | 37 |
| Economically inactive: Student (including full-time students) | 245 | 347 | 102 | 42 |
| Long-term unemployed | 46 | 102 | 56 | 122 |
| Unemployed: Age 16 to 24 | 32 | 78 | 46 | 144 |
| Unemployed: Age 50 and over | 43 | 51 | 8 | 19 |
| Unemployed: Never worked | 6 | 34 | 28 | 467 |

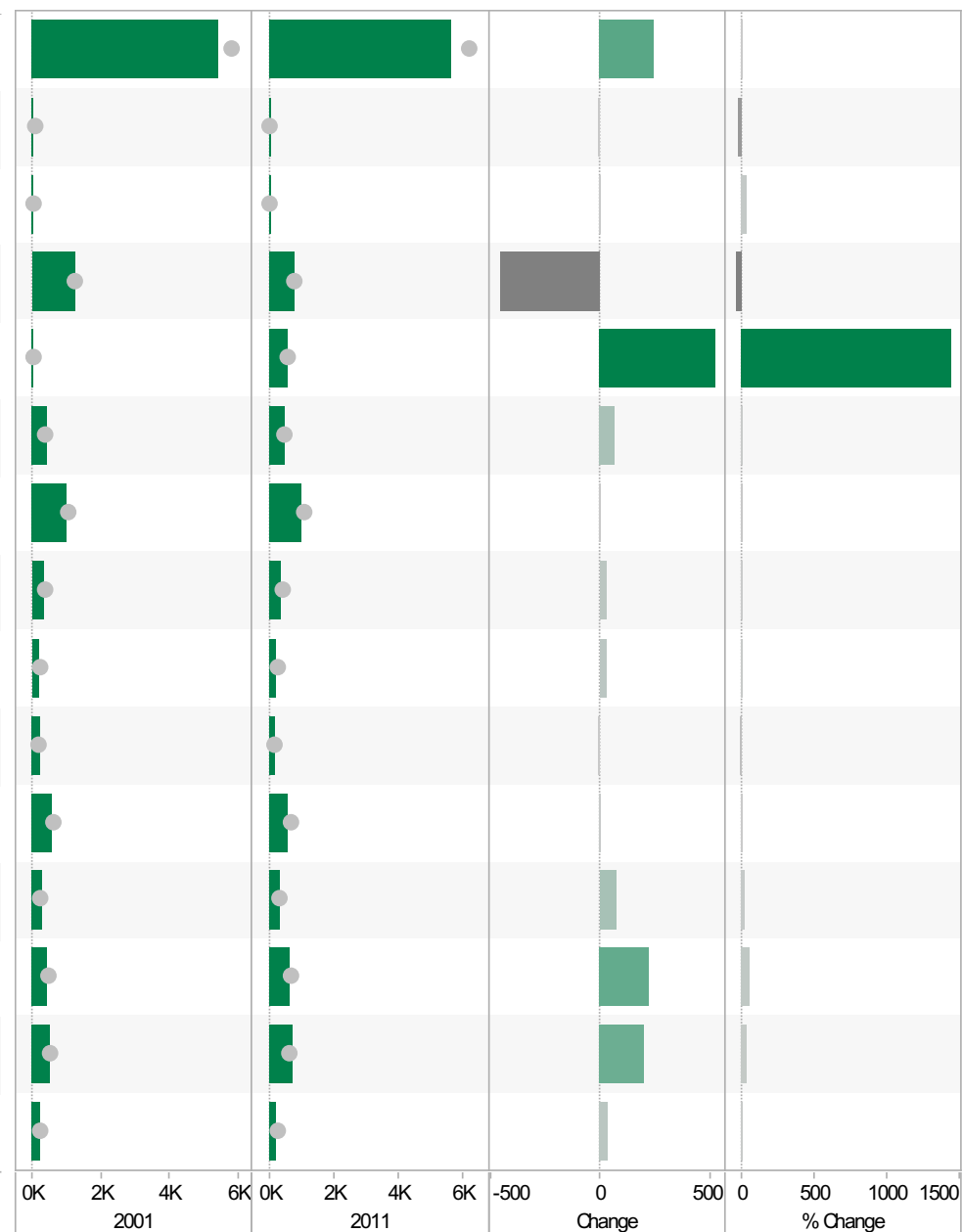


Source: Office for National Statistics (ONS), 2013.
 Produced by the Research and Insight Team, Leicestershire County Council.

System Fosse* ED
KS605EW : Industry, 2001-11

Coloured bar - data for Electoral Division
 Grey circle - average for all Leicestershire Electoral Divisions

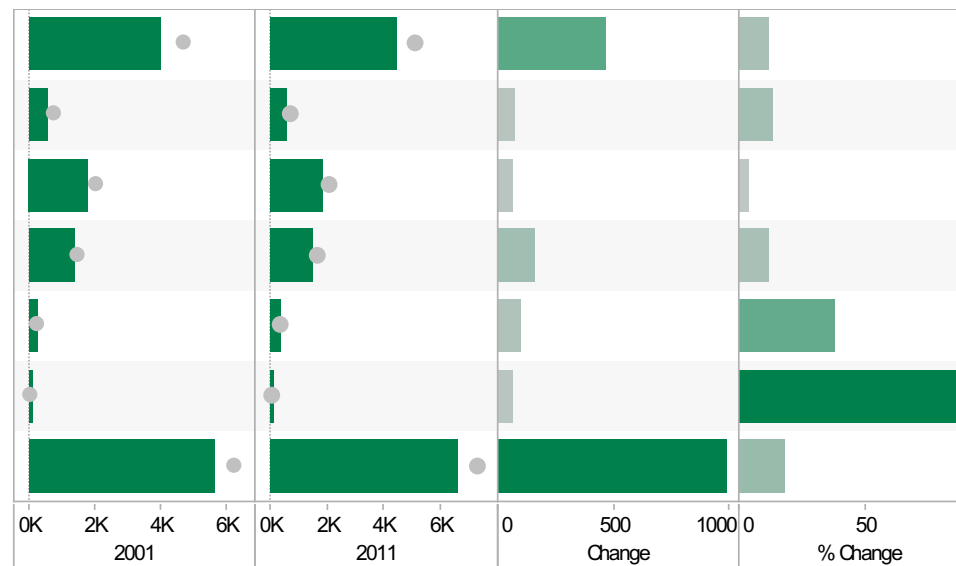
| | 2001 | 2011 | Change | % Change |
|--|-------|-------|--------|----------|
| All usual residents aged 16 and over in employment | 5,415 | 5,660 | 245 | 5 |
| A Agriculture, forestry and fishing | 45 | 34 | -11 | -24 |
| B Mining and quarrying | 6 | 8 | 2 | 33 |
| C Manufacturing | 1,214 | 758 | -456 | -38 |
| D, F Electricity, gas, steam, air conditioning supply, water and sewerage | 36 | 555 | 519 | 1,442 |
| F Construction | 426 | 491 | 65 | 15 |
| G Wholesale and retail trade; repair of motor vehicles and motor cycles | 1,006 | 1,000 | -6 | -1 |
| H, J Transport, storage, information and communication | 337 | 368 | 31 | 9 |
| I Accommodation and food service activities | 194 | 224 | 30 | 15 |
| K Financial and insurance activities | 202 | 191 | -11 | -5 |
| L, M, N Real estate activities Professional, scientific and technical activities Administrative and support service activities | 570 | 578 | 8 | 1 |
| O Public administration and defence; compulsory social security | 249 | 318 | 69 | 28 |
| P Education | 391 | 611 | 220 | 56 |
| Q Human health and social work activities | 529 | 726 | 197 | 37 |
| R, S, T, U Other | 210 | 243 | 33 | 16 |



Source: Office for National Statistics (ONS), 2013.
 Produced by the Research and Insight Team, Leicestershire County Council.

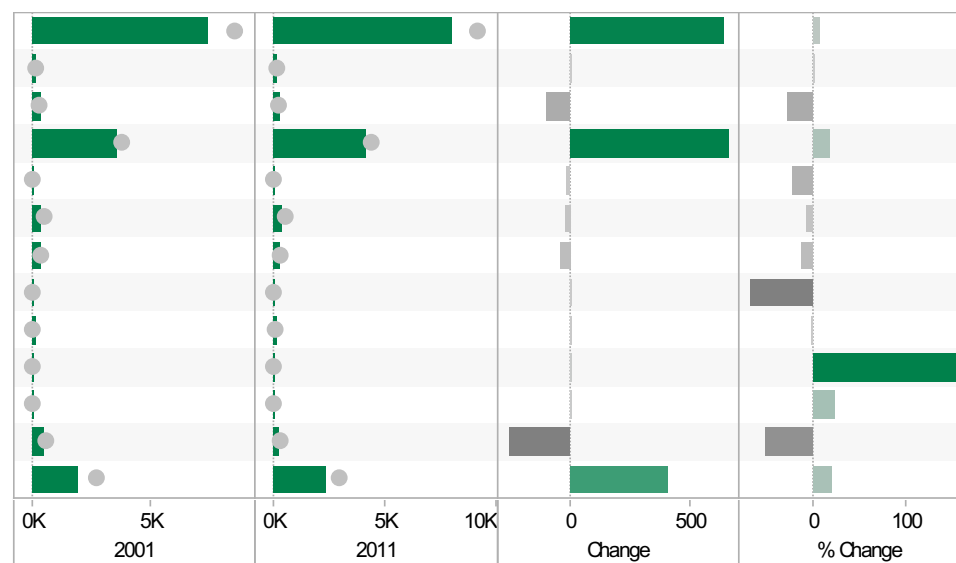
Syston Fosse* ED
KS404EW : Car and Van Availability, 2001-11

| | 2001 | 2011 | Change | % Change |
|-------------------------------------|-------|-------|--------|----------|
| All Households | 3,976 | 4,444 | 468 | 12 |
| No Cars or Vans in Household | 529 | 600 | 71 | 13 |
| 1 Car or Van in Household | 1,759 | 1,828 | 69 | 4 |
| 2 Cars or Vans in Household | 1,349 | 1,510 | 161 | 12 |
| 3 Cars or Vans in Household | 265 | 365 | 100 | 38 |
| 4 or More Cars or Vans in Household | 74 | 141 | 67 | 91 |
| All Cars or Vans in the Area | 5,600 | 6,592 | 992 | 18 |



Syston Fosse* ED
QS701EW : Method of Travel to Work, 2001-11

| | 2001 | 2011 | Change | % Change |
|--------------------------------------|-------|-------|--------|----------|
| All Usual Residents Aged 16 to 74 | 7,361 | 8,002 | 641 | 9 |
| Bicycle | 129 | 130 | 1 | 1 |
| Bus, Minibus or Coach | 366 | 267 | -99 | -27 |
| Driving a Car or Van | 3,516 | 4,172 | 656 | 19 |
| Motorcycle, Scooter or Moped | 48 | 38 | -10 | -21 |
| On Foot | 370 | 349 | -21 | -6 |
| Passenger in a Car or Van | 334 | 293 | -41 | -12 |
| Taxi | 3 | 1 | -2 | -67 |
| Train | 126 | 125 | -1 | -1 |
| Underground, Metro, Light Rail, Tram | 3 | 8 | 5 | 167 |
| Other Method of Travel to Work | 17 | 21 | 4 | 24 |
| Work Mainly at or From Home | 511 | 256 | -255 | -50 |
| Not in Employment | 1,938 | 2,342 | 404 | 21 |



Source: Office for National Statistics (ONS), 2013.
 Produced by the Research and Insight Team, Leicestershire County Council.

If you require information contained in this leaflet in another version e.g. large print, Braille, tape or alternative language please telephone: 0116 305 6803, Fax: 0116 305 7271 or Minicom: 0116 305 6160.

ਜੇ ਆਪ ਆ ਮਾਭਿਨੀ ਆਪਨੀ ਆਧਾਮਾਂ ਸਮਝਵਾਮਾਂ ਥੋੜੀ ਮਦਦ ਈਝਤਾਂ ਡੋ ਤੋ 0116 305 6803 ਨੰਬਰ ਪਰ ਝੋਨ ਕਰਥੋ ਅਨੇ ਅਮੇ ਆਪਨੇ ਮਦਦ ਕਰਵਾ ਅਵਥਾ ਕਰੀਯੁੰ.

ਜੇਕਰ ਤੁਹਾਨੂੰ ਇਸ ਜਾਣਕਾਰੀ ਨੂੰ ਸਮਝਣ ਵਿਚ ਕੁਝ ਮਦਦ ਚਾਹੀਦੀ ਹੈ ਤਾਂ ਕਿਰਪਾ ਕਰਕੇ 0116 305 6803 ਨੰਬਰ ਤੇ ਫ਼ੋਨ ਕਰੋ ਅਤੇ ਅਸੀਂ ਤੁਹਾਡੀ ਮਦਦ ਲਈ ਕਿਸੇ ਦਾ ਪ੍ਰਬੰਧ ਕਰ ਦਵਾਂਗੇ।

এই তথ্য নিজের ভাষায় বুঝার জন্য আপনার যদি কোন সাহায্যের প্রয়োজন হয়, তবে 0116 305 6803 এই নম্বরে ফোন করলে আমরা উপযুক্ত ব্যক্তির ব্যবস্থা করবো।

اگر آپ کو یہ معلومات سمجھنے میں کچھ مدد درکار ہے تو براہ مہربانی اس نمبر پر کال کریں اور ہم آپ کی مدد کے لئے کسی کا انتظام کر دیں گے۔ 0116 305 6803

假如閣下需要幫助，用你的語言去明白這些資訊，請致電 0116 305 6803，我們會安排有關人員為你提供幫助。

Jeżeli potrzebujesz pomocy w zrozumieniu tej informacji w Twoim języku, zadzwoń pod numer 0116 305 6803, a my Ci dopomożemy.

Research & Insight Team
Strategy, Partnerships & Communities
Chief Executive's Department
Leicestershire County Council
County Hall
Glenfield
Leicester
LE3 8RA

ri@leics.gov.uk
www.lsr-online.org