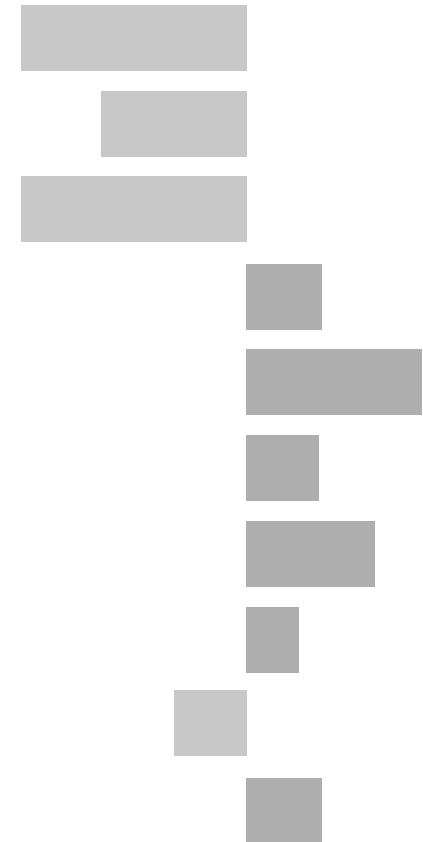


Thurmaston Electoral Division

2011 Census Key Statistics

Alex Lea
May 2013

Research and Insight Team
Leicestershire County Council



Alex Lea

Research & Insight Manager

Research & Insight Team
Strategy, Partnerships & Communities
Leicestershire County Council
County Hall
Glenfield
Leicester LE3 8RB

Tel 0116 305 6803

Email alex.lea@leics.gov.uk

Produced by the Research and Insight Team at Leicestershire County Council.

Whilst every effort has been made to ensure the accuracy of the information contained within this report, Leicestershire County Council cannot be held responsible for any errors or omission relating to the data contained within the report.

CONTENTS

Introduction

About this Report	4
2011 Census	4
Data	5
Census Geography	5
Indicator Changes 2001-11	6

Population

KS101EW - Usual Resident Population	7
KS102EW - Age Structure	7

Households

KS105EW - Household Composition	8
KS402EW - Tenure	9

Health and Caring

KS301EW - Health and Provision of Unpaid Care	9
-----------------------------------------------	---

Ethnicity

KS201EW - Ethnic Group	10
------------------------	----

Economy

KS601EW - Economic Activity	11
KS605EW - Industry	12

Transport

KS404EW - Car and Van Availability	13
QS701EW- Method of Travel to Work	13

INTRODUCTION

ABOUT THIS REPORT

This report provides a broad overview of the 2011 Census Key Statistics data, released by the Office for National Statistics on 30th January 2013, as part of the Second Release. This report summarises a selection of key headline datasets of this release for Leicestershire Electoral Divisions (EDs).

The Research and Insight Team at Leicestershire County Council has used data from the Second release to create an interactive Tableau dashboard containing 32 datasets covering the following geographies:

- England
- East Midlands
- East Midlands counties . Including Leicestershire
- Leicester City and Rutland Unitary Authorities
- Leicestershire districts

In addition, a headline report covers the results for Leicestershire and the seven districts that make up the county. The dashboard and report are available at the following links:

Census 2011 Key Statistics Dashboard

<http://public.tableausoftware.com/views/LAKeyStatsDashboard/Dashboard>

May 2013

Census 2011 Key Statistics Headline Report

http://www.lsr-online.org/reports/census_2011_key_statistics_headline_report/download/1/Census%202011%20Second%20Release%20FINAL.pdf

2011 CENSUS

Census statistics help paint a picture of the nation and how we live. They provide a detailed snapshot of the population and its characteristics, and underpin funding allocation to provide public services.¹ Data from the 2011 Census is made available at a variety of different levels of geography and in various releases.

The Key Statistics data covers a broad range of socio-economic topics, including data on ethnicity, health and employment. Each Key Statistic dataset is referred to by its unique three-digit code with the 'KS' prefix to denote a Key statistic (e.g. KS101). These are used throughout the report.

A full list of the 35 Key Statistics data tables are available here:

<http://www.ons.gov.uk/ons/publications/re-reference-tables.html?edition=tcm%3A77-286262>

¹ Office for National Statistics (ONS), 2013.

Further results from the census will be released throughout 2013, for more information, please visit:

<http://www.lsr-online.org/census-2011.html>

More information on the 2011 Census can be found here:

<http://www.ons.gov.uk/ons/guide-method/census/2011/index.html>

DATA

Data has been compiled for Leicestershire Electoral Divisions, covering the key datasets from the 2011 Census Key statistics.

Figures for 2011 and 2001 are included, along with the overall and percentage change between the two censuses. Data for each indicator is presented in a table and chart.

Population data is displayed in a table, a population pyramid and a chart showing percentage change between 2001 and 2011. All other data is displayed in tables, and charts. Charts for change between 2001 and 2011 are coloured according to the degree of change between the two censuses; grey corresponds to smallest change and green the largest change. A marker indicates the average figure for all Leicestershire Electoral Divisions.

GEOGRAPHY

Maps for all County Council Electoral Divisions can be found here:

http://www.leics.gov.uk/index/your_council/local_democracy/conductofcouncillorsandemployees/electoraldivisionmapsindex/electoraldivisionmaps.htm

As Census data is not made available for Electoral Divisions, smaller areas, called Lower Super Output Areas (LSOAs) have been used as building blocks for the figures included in this report. LSOAs are small parcels of geography, containing a minimum of 1,000 people, a maximum of 3,000 and an average of 1,500. LSOAs were initially developed for the 2001 Census and are used to release a range of neighbourhood-level datasets from various sources. There are 396 LSOAs in Leicestershire.

In some instances, LSOAs do not fit neatly within Electoral Divisions and in these cases, population weighted centroids - representing the 'centre of gravity' for population within an area - have been used in order to assign each LSOA to an Electoral Division. Electoral Divisions that fall within this category are indicated with a (*).

More information on Lower Super Output Areas can be found here:

<http://www.ons.gov.uk/ons/guide-method/geography/beginner-s-guide/census/super-output-areas--soas-/index.html>

INDICATOR CHANGES 2001-11

The following questions were asked in slightly different ways in 2011 compared to 2001. As such, care should be taken when making comparison between years.

KS201EW : Ethnic Group

Asian/Asian British: Chinese
Mixed/multiple ethnic group: Other Mixed
Mixed/multiple ethnic group: White and Asian
Mixed/multiple ethnic group: White and Black African
Mixed/multiple ethnic group: White and Black Caribbean
Other ethnic group: Any other ethnic group
White: English/Welsh/Scottish/Northern Irish/British
White: Other White

KS301EW : Health and Provision of Unpaid Care

Day-to-day activities limited
Day-to-day activities limited: Age 16 to 64
Day-to-day activities not limited
Fair health
Very/ bad Health
Very/ good Health

KS601EW : Economic Activity

All usual residents aged 16 and over
Economically active: Employee: Full-time
Economically active: Employee: Part-time
Economically active: Full-time student

Economically active: Self-employed
Economically active: Unemployed
Economically inactive: Long-term sick or disabled
Economically inactive: Looking after home or family
Economically inactive: Other
Economically inactive: Retired
Economically inactive: Student (including full-time)
Long-term unemployed
Unemployed: Age 50 and over
Unemployed: Never worked

KS605EW : Industry

All usual residents aged 16 and over in employment
A Agriculture, forestry and fishing
B Mining and quarrying
C Manufacturing
D, F Electricity, gas, steam, air conditioning supply etc
F Construction
G Wholesale and retail trade; repair of motor vehicles etc
H, J Transport, storage, information and communication
I Accommodation and food service activities
K Financial and insurance activities
L,M,N Real estate activities Professional, scientific etc
O Public administration and defence etc
P Education
Q Human health and social work activities
R, S, T, U Other

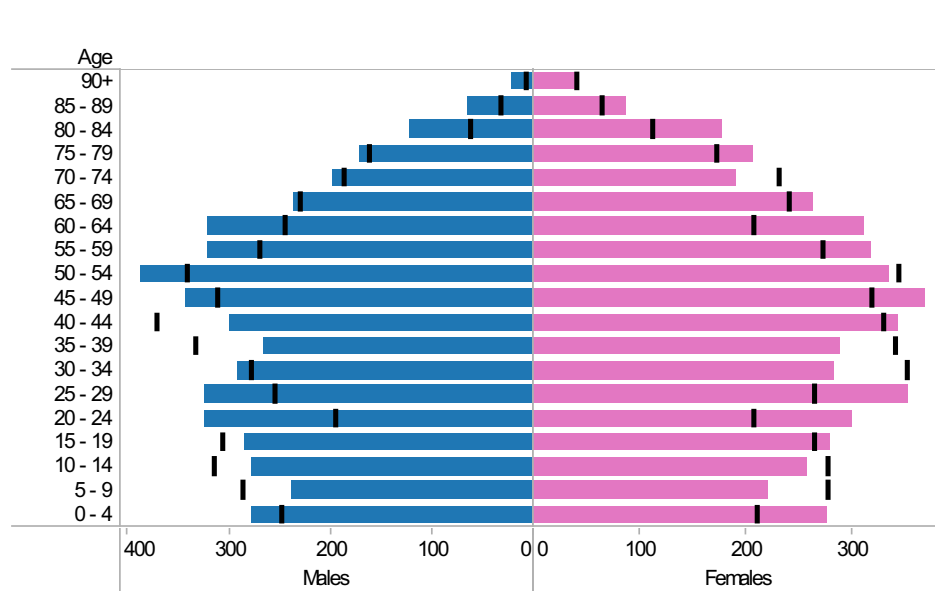
Thurmaston ED: KS101EW : Usual Resident Population, KS102EW : Age Structure

■ Males
 ■ Females
 ■ Persons

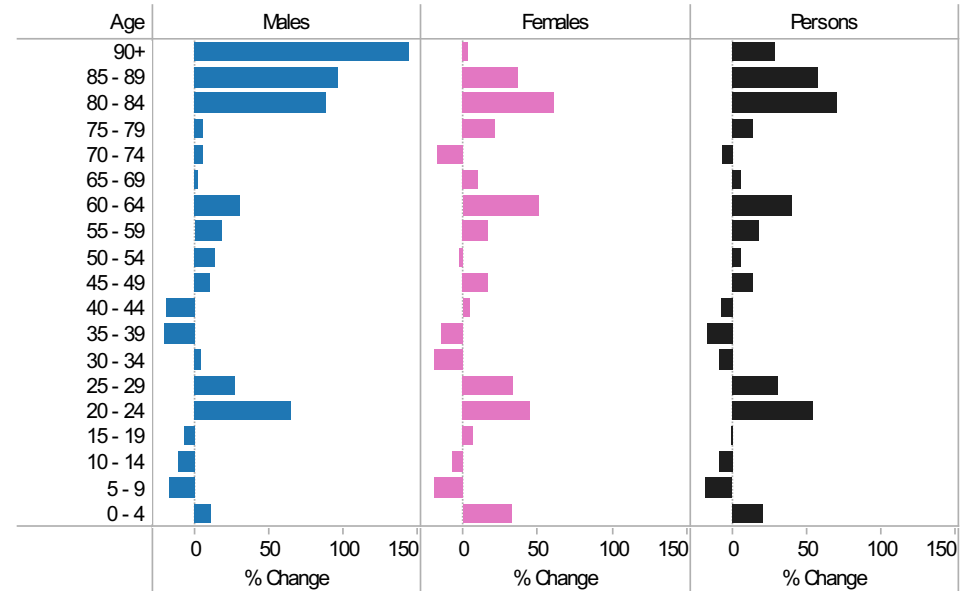
2001-11 Population by sex and quinary age band

Age	Males			Females			Persons		
	2001	2011	Change 2001-11	2001	2011	Change 2001-11	2001	2011	Change 2001-11
90+	9	22	13	40	41	1	49	63	14
85 - 89	33	65	32	64	88	24	97	153	56
80 - 84	64	121	57	111	178	67	175	299	124
75 - 79	163	171	8	171	207	36	334	378	44
70 - 74	188	198	10	230	191	-39	418	389	-29
65 - 69	231	236	5	240	263	23	471	499	28
60 - 64	246	321	75	206	311	105	452	632	180
55 - 59	271	321	50	271	317	46	542	638	96
50 - 54	343	388	45	343	335	-8	686	723	37
45 - 49	312	342	30	317	369	52	629	711	82
40 - 44	373	300	-73	328	343	15	701	643	-58
35 - 39	335	266	-69	340	289	-51	675	555	-120
30 - 34	280	291	11	351	283	-68	631	574	-57
25 - 29	256	324	68	264	353	89	520	677	157
20 - 24	196	324	128	207	300	93	403	624	221
15 - 19	307	285	-22	263	279	16	570	564	-6
10 - 14	316	278	-38	277	257	-20	593	535	-58
5 - 9	287	237	-50	276	220	-56	563	457	-106
0 - 4	250	278	28	209	276	67	459	554	95
All Ages	4,460	4,768	308	4,508	4,900	392	8,968	9,668	700

2011 (coloured bars) and 2001 (black marks) population by sex and quinary age

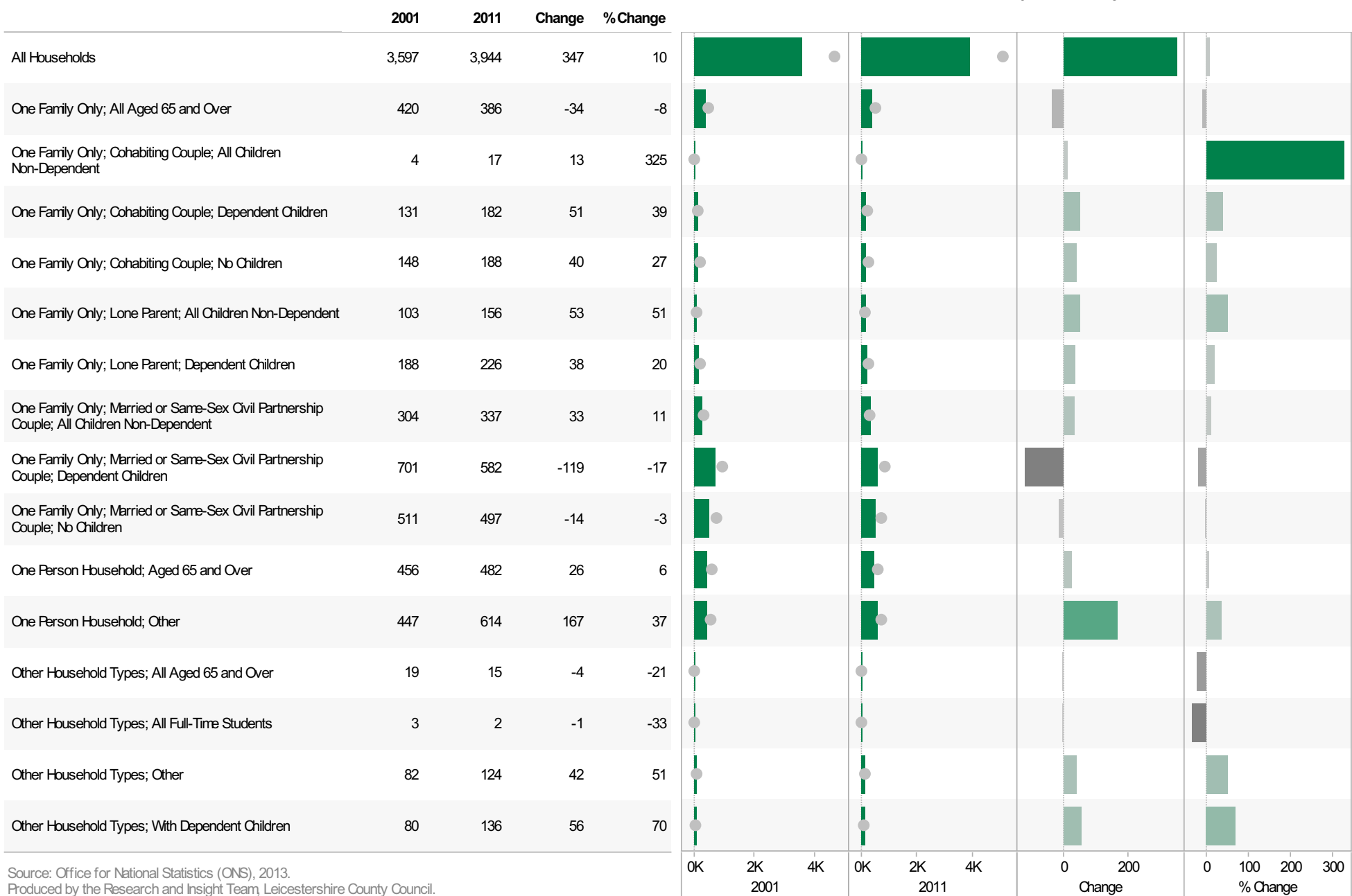


2001-11 Percentage change by sex and quinary age band



Thurmaston ED KS105EW : Household Composition, 2001-11

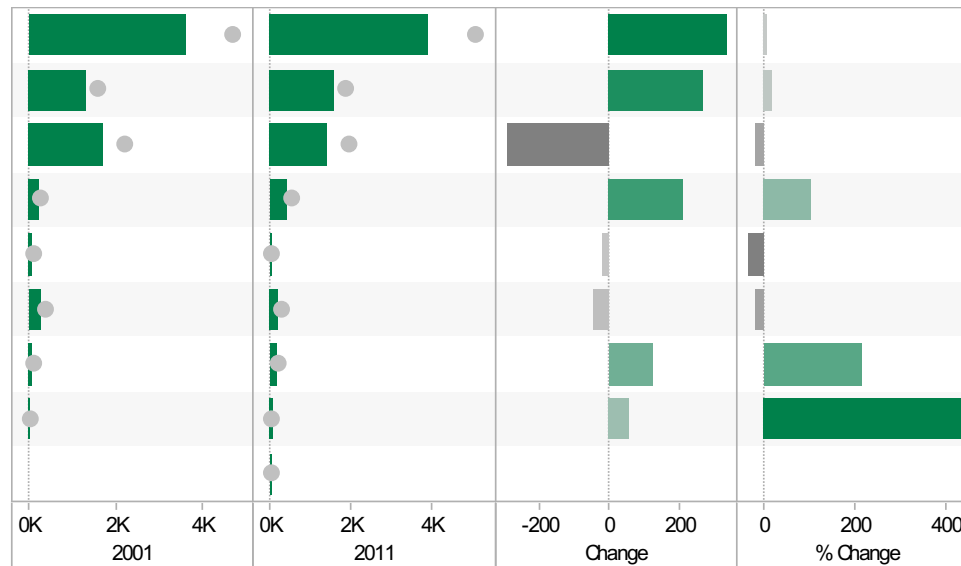
Coloured bar - data for Electoral Division
Grey circle - average for all Leicestershire Electoral Divisions



Source: Office for National Statistics (ONS), 2013.
Produced by the Research and Insight Team, Leicestershire County Council.

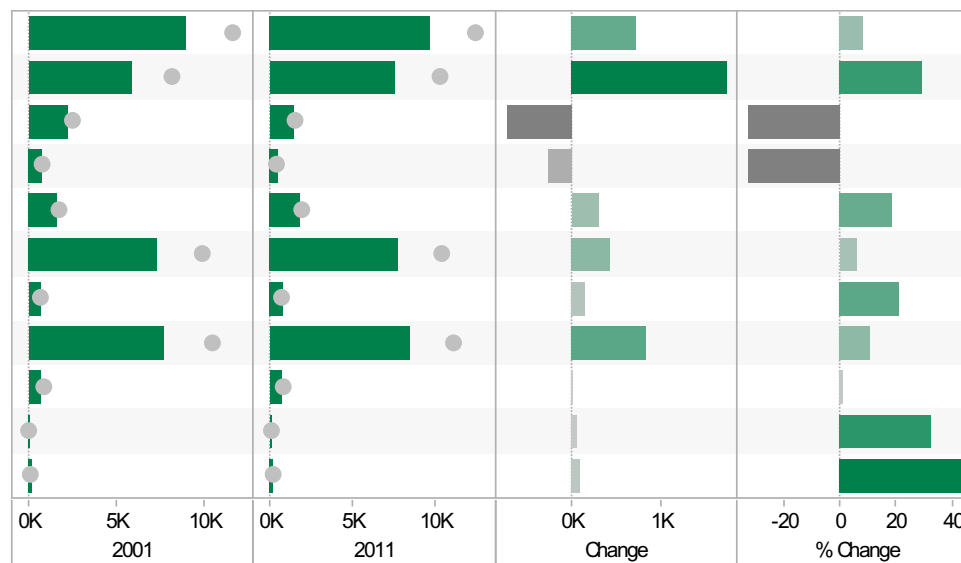
Thurmaston ED
KS402EW: Tenure, 2001-11

	2001	2011	Change	% Change
All Households	3,609	3,944	335	9
Owned; Owned Outright	1,322	1,592	270	20
Owned; Owned with a Mortgage or Loan	1,706	1,411	-295	-17
Private Rented; Private Landlord or Letting Agency	200	410	210	105
Private Rented; Other	61	40	-21	-34
Social Rented; Rented from Council (Local Authority)	250	204	-46	-18
Social Rented; Other	57	179	122	214
Shared Ownership (Part Owned and Part Rented)	13	71	58	446
Living Rent Free		37		



Thurmaston ED
KS301EW: Health and Provision of Unpaid Care, 2001-11

	2001	2011	Change	% Change
All usual residents	8,945	9,668	723	8
Very/ good Health	5,864	7,598	1,734	30
Fair health	2,261	1,519	-742	-33
Very/ bad Health	820	551	-269	-33
Day-to-day activities limited	1,610	1,904	294	18
Day-to-day activities not limited	7,335	7,764	429	6
Day-to-day activities limited a lot: Age 16 to 64	711	861	150	21
Provides no unpaid care	7,657	8,479	822	11
Provides 1 to 19 hours unpaid care a week	721	730	9	1
Provides 20 to 49 hours unpaid care a week	126	167	41	33
Provides 50 or more hours unpaid care a week	201	292	91	45



Source: Office for National Statistics (ONS), 2013.
Produced by the Research and Insight Team, Leicestershire County Council.

Thurmaston ED
KS201EW : Ethnic Group, 2001-11

Coloured bar - data for Electoral Division
Grey circle - average for all Leicestershire Electoral Divisions

	2001	2011	Change	% Change
All usual residents	8,945	9,668	723	8
White: English/Welsh/Scottish/Northern Irish/British	7,103	6,700	-403	-6
White: Irish	67	64	-3	-4
White: Other White	93	158	65	70
Asian/Asian British: Bangladeshi	0	8	8	
Asian/Asian British: Chinese	16	15	-1	-6
Asian/Asian British: Indian	1,437	2,229	792	55
Asian/Asian British: Other Asian	61	109	48	79
Asian/Asian British: Pakistani	6	51	45	750
Black/African/Caribbean/Black British: African	11	33	22	200
Black/African/Caribbean/Black British: Caribbean	42	40	-2	-5
Black/African/Caribbean/Black British: Other Black	0	19	19	
Mixed/multiple ethnic group: Other Mixed	16	16	0	0
Mixed/multiple ethnic group: White and Asian	46	72	26	57
Mixed/multiple ethnic group: White and Black African	0	11	11	
Mixed/multiple ethnic group: White and Black Caribbean	35	62	27	77
Other ethnic group: Any other ethnic group	12	81	69	575

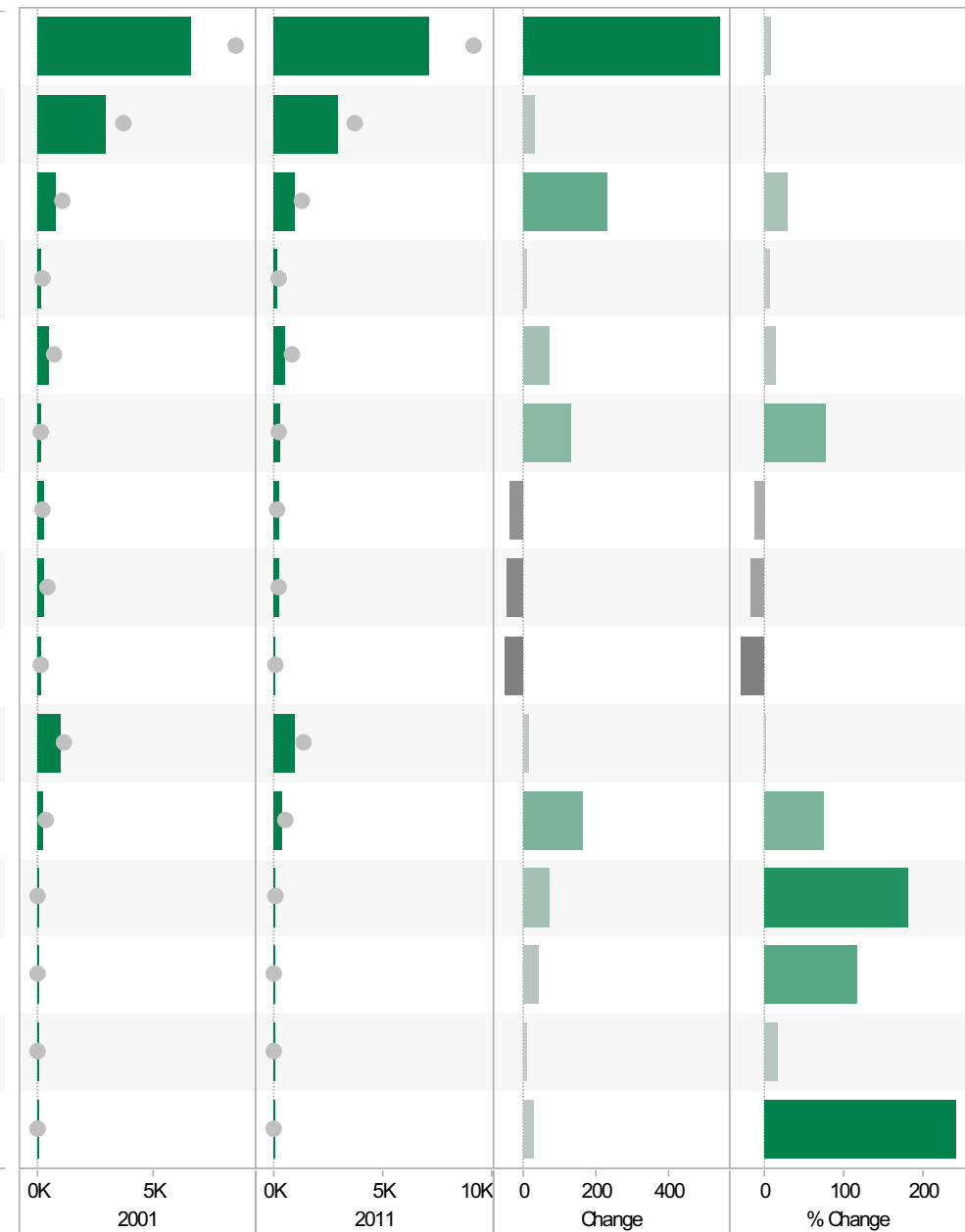


Source: Office for National Statistics (ONS), 2013.
 Produced by the Research and Insight Team, Leicestershire County Council.

Thurmaston ED
KS601EW : Economic Activity, 2001-11

Coloured bar - data for Electoral Division
Grey circle - average for all Leicestershire Electoral Divisions

	2001	2011	Change	% Change
All usual residents aged 16 and over	6,583	7,123	540	8
Economically active: Employee: Full-time	2,938	2,971	33	1
Economically active: Employee: Part-time	812	1,044	232	29
Economically active: Full-time student	160	172	12	8
Economically active: Self-employed	492	568	76	15
Economically active: Unemployed	176	311	135	77
Economically inactive: Long-term sick or disabled	314	278	-36	-11
Economically inactive: Looking after home or family	280	236	-44	-16
Economically inactive: Other	166	116	-50	-30
Economically inactive: Retired	1,027	1,043	16	2
Economically inactive: Student (including full-time students)	218	384	166	76
Long-term unemployed	41	116	75	183
Unemployed: Age 16 to 24	36	78	42	117
Unemployed: Age 50 and over	53	62	9	17
Unemployed: Never worked	12	41	29	242

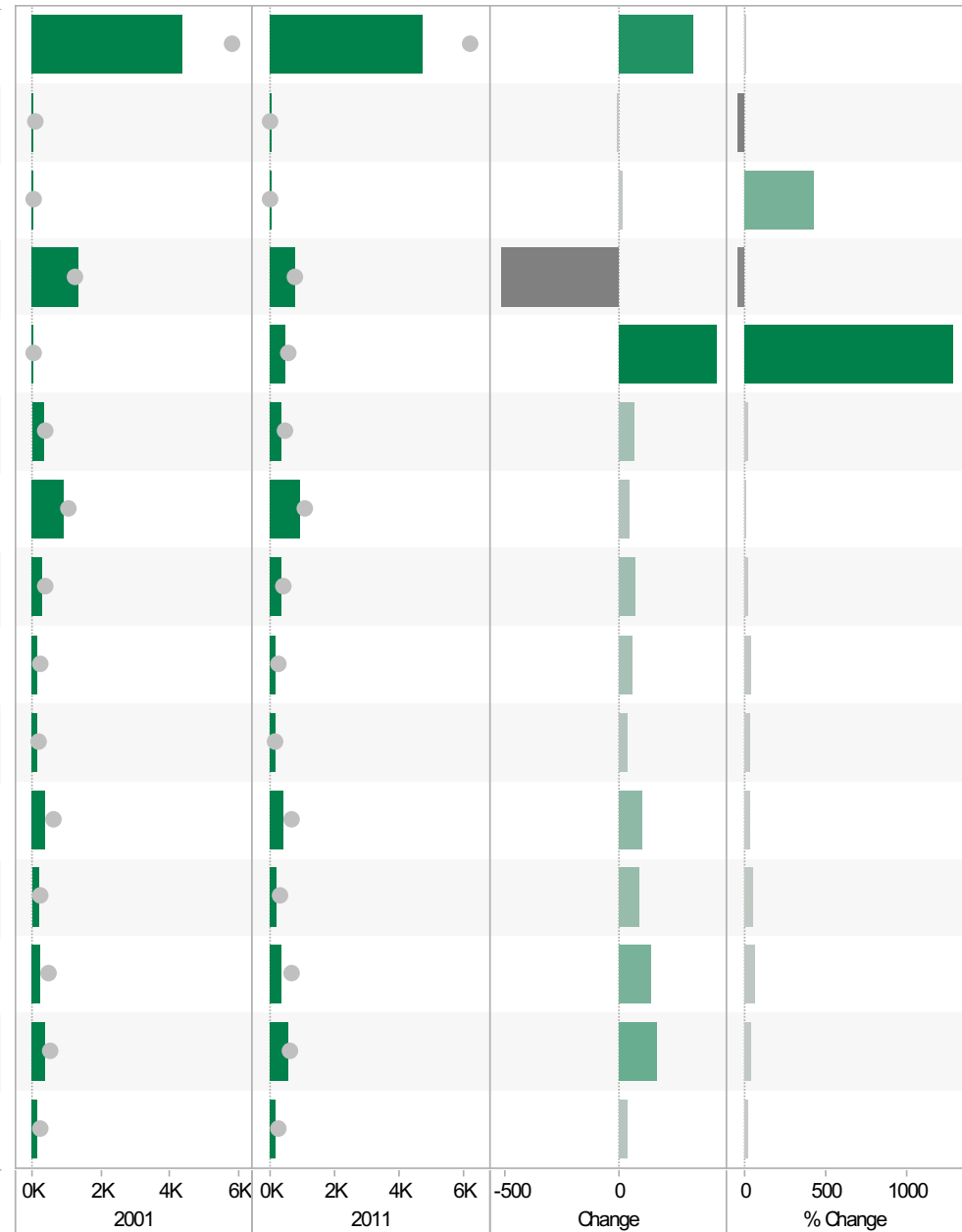


Source: Office for National Statistics (ONS), 2013.
 Produced by the Research and Insight Team, Leicestershire County Council.

Thurmaston ED
KS605EW : Industry, 2001-11

Coloured bar - data for Electoral Division
Grey circle - average for all Leicestershire Electoral Divisions

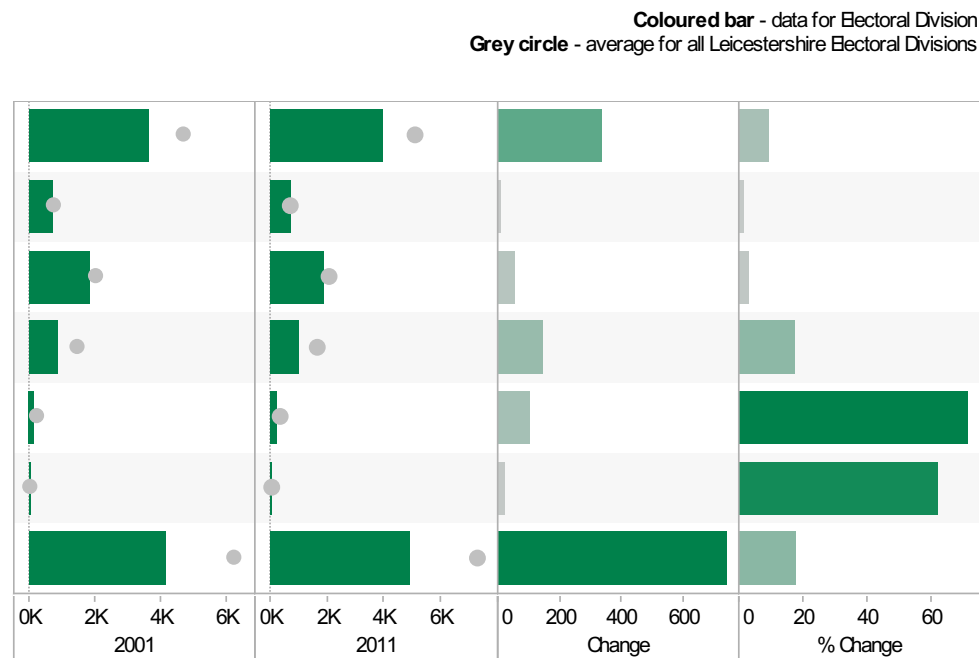
	2001	2011	Change	% Change
All usual residents aged 16 and over in employment	4,384	4,711	327	7
A Agriculture, forestry and fishing	20	11	-9	-45
B Mining and quarrying	3	16	13	433
C Manufacturing	1,322	803	-519	-39
D, F Electricity, gas, steam, air conditioning supply, water and sewerage	33	456	423	1,282
F Construction	332	394	62	19
G Wholesale and retail trade; repair of motor vehicles and motor cycles	870	910	40	5
H, J Transport, storage, information and communication	287	356	69	24
I Accommodation and food service activities	136	191	55	40
K Financial and insurance activities	122	160	38	31
L, M, N Real estate activities Professional, scientific and technical activities Administrative and support service activities	345	443	98	28
O Public administration and defence; compulsory social security	162	245	83	51
P Education	225	362	137	61
Q Human health and social work activities	384	553	169	44
R, S, T, U Other	143	176	33	23



Source: Office for National Statistics (ONS), 2013.
 Produced by the Research and Insight Team, Leicestershire County Council.

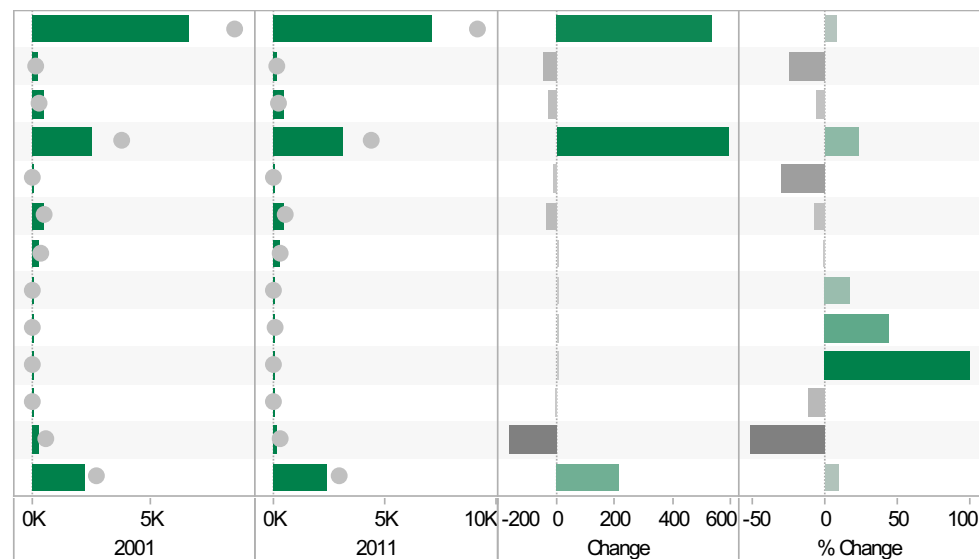
Thurmaston ED KS404EW : Car and Van Availability, 2001-11

	2001	2011	Change	% Change
All Households	3,606	3,944	338	9
No Cars or Vans in Household	728	740	12	2
1 Car or Van in Household	1,843	1,897	54	3
2 Cars or Vans in Household	854	1,000	146	17
3 Cars or Vans in Household	147	252	105	71
4 or More Cars or Vans in Household	34	55	21	62
All Cars or Vans in the Area	4,140	4,886	746	18



Thurmaston ED QS701EW : Method of Travel to Work, 2001-11

	2001	2011	Change	% Change
All Usual Residents Aged 16 to 74	6,586	7,123	537	8
Bicycle	191	145	-46	-24
Bus, Minibus or Coach	488	463	-25	-5
Driving a Car or Van	2,501	3,091	590	24
Motorcycle, Scooter or Moped	40	28	-12	-30
On Foot	489	458	-31	-6
Passenger in a Car or Van	312	311	-1	0
Taxi	11	13	2	18
Train	18	26	8	44
Underground, Metro, Light Rail, Tram	3	6	3	100
Other Method of Travel to Work	18	16	-2	-11
Work Mainly at or From Home	318	154	-164	-52
Not in Employment	2,197	2,412	215	10



If you require information contained in this leaflet in another version e.g. large print, Braille, tape or alternative language please telephone: 0116 305 6803, Fax: 0116 305 7271 or Minicom: 0116 305 6160.

ਜੇ ਆਪ ਆ ਮਾਭਿਨੀ ਆਪਨੀ ਆਧਾਮਾਂ ਸਮਝਵਾਮਾਂ ਥੋੜੀ ਮਦਦ ਈਝਤਾਂ ਡੋ ਤੋ 0116 305 6803 ਨੰਬਰ ਪਰ ਝੋਨ ਕਰਥੋ ਅਨੇ ਅਮੇ ਆਪਨੇ ਮਦਦ ਕਰਵਾ ਅਵਥਾ ਕਰੀਥੁੰ.

ਜੇਕਰ ਤੁਹਾਨੂੰ ਇਸ ਜਾਣਕਾਰੀ ਨੂੰ ਸਮਝਣ ਵਿਚ ਕੁਝ ਮਦਦ ਚਾਹੀਦੀ ਹੈ ਤਾਂ ਕਿਰਪਾ ਕਰਕੇ 0116 305 6803 ਨੰਬਰ ਤੇ ਫ਼ੋਨ ਕਰੋ ਅਤੇ ਅਸੀਂ ਤੁਹਾਡੀ ਮਦਦ ਲਈ ਕਿਸੇ ਦਾ ਪ੍ਰਬੰਧ ਕਰ ਦਵਾਂਗੇ।

এই তথ্য নিজের ভাষায় বুঝার জন্য আপনার যদি কোন সাহায্যের প্রয়োজন হয়, তবে 0116 305 6803 এই নম্বরে ফোন করলে আমরা উপযুক্ত ব্যক্তির ব্যবস্থা করবো।

اگر آپ کو یہ معلومات سمجھنے میں کچھ مدد درکار ہے تو براہ مہربانی اس نمبر پر کال کریں اور ہم آپ کی مدد کے لئے کسی کا انتظام کر دیں گے۔ 0116 305 6803

假如閣下需要幫助，用你的語言去明白這些資訊，請致電 0116 305 6803，我們會安排有關人員為你提供幫助。

Jeżeli potrzebujesz pomocy w zrozumieniu tej informacji w Twoim języku, zadzwoń pod numer 0116 305 6803, a my Ci dopomożemy.

Research & Insight Team
Strategy, Partnerships & Communities
Chief Executive's Department
Leicestershire County Council
County Hall
Glenfield
Leicester
LE3 8RA

ri@leics.gov.uk
www.lsr-online.org