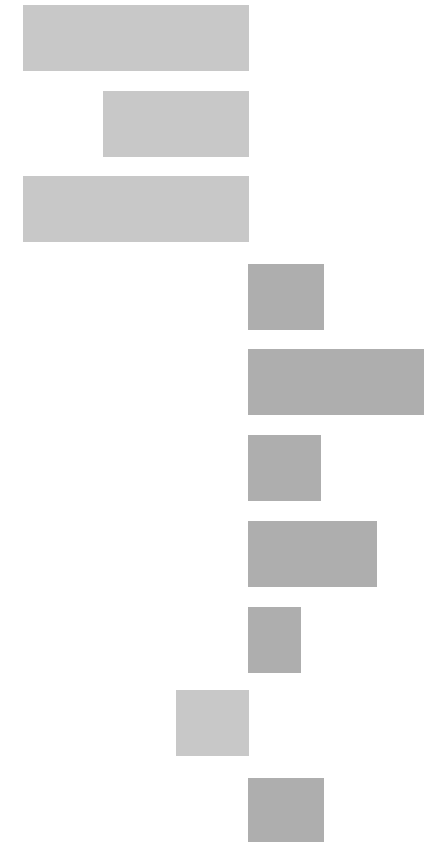


Stanton, Croft and Normanton Electoral Division

2011 Census Key Statistics

Alex Lea
May 2013

Research and Insight Team
Leicestershire County Council



Alex Lea

Research & Insight Manager

Research & Insight Team
Strategy, Partnerships & Communities
Leicestershire County Council
County Hall
Glenfield
Leicester LE3 8RB

Tel 0116 305 6803

Email alex.lea@leics.gov.uk

Produced by the Research and Insight Team at Leicestershire County Council.

Whilst every effort has been made to ensure the accuracy of the information contained within this report, Leicestershire County Council cannot be held responsible for any errors or omission relating to the data contained within the report.

CONTENTS

Introduction

About this Report	4
2011 Census	4
Data	5
Census Geography	5
Indicator Changes 2001-11	6

Population

KS101EW - Usual Resident Population	7
KS102EW - Age Structure	7

Households

KS105EW - Household Composition	8
KS402EW - Tenure	9

Health and Caring

KS301EW - Health and Provision of Unpaid Care	9
---	---

Ethnicity

KS201EW - Ethnic Group	10
------------------------	----

Economy

KS601EW - Economic Activity	11
KS605EW - Industry	12

Transport

KS404EW - Car and Van Availability	13
QS701EW- Method of Travel to Work	13

INTRODUCTION

ABOUT THIS REPORT

This report provides a broad overview of the 2011 Census Key Statistics data, released by the Office for National Statistics on 30th January 2013, as part of the Second Release. This report summarises a selection of key headline datasets of this release for Leicestershire Electoral Divisions (EDs).

The Research and Insight Team at Leicestershire County Council has used data from the Second release to create an interactive Tableau dashboard containing 32 datasets covering the following geographies:

- England
- East Midlands
- East Midlands counties . Including Leicestershire
- Leicester City and Rutland Unitary Authorities
- Leicestershire districts

In addition, a headline report covers the results for Leicestershire and the seven districts that make up the county. The dashboard and report are available at the following links:

Census 2011 Key Statistics Dashboard

<http://public.tableausoftware.com/views/LAKeyStatsDashboard/Dashboard>

May 2013

Census 2011 Key Statistics Headline Report

http://www.lsr-online.org/reports/census_2011_key_statistics_headline_report/download/1/Census%202011%20Second%20Release%20FINAL.pdf

2011 CENSUS

Census statistics help paint a picture of the nation and how we live. They provide a detailed snapshot of the population and its characteristics, and underpin funding allocation to provide public services.¹ Data from the 2011 Census is made available at a variety of different levels of geography and in various releases.

The Key Statistics data covers a broad range of socio-economic topics, including data on ethnicity, health and employment. Each Key Statistic dataset is referred to by its unique three-digit code with the 'KS' prefix to denote a Key statistic (e.g. KS101). These are used throughout the report.

A full list of the 35 Key Statistics data tables are available here:

<http://www.ons.gov.uk/ons/publications/re-reference-tables.html?edition=tcm%3A77-286262>

¹ Office for National Statistics (ONS), 2013.

Further results from the census will be released throughout 2013, for more information, please visit:

<http://www.lsr-online.org/census-2011.html>

More information on the 2011 Census can be found here:

<http://www.ons.gov.uk/ons/guide-method/census/2011/index.html>

DATA

Data has been compiled for Leicestershire Electoral Divisions, covering the key datasets from the 2011 Census Key statistics.

Figures for 2011 and 2001 are included, along with the overall and percentage change between the two censuses. Data for each indicator is presented in a table and chart.

Population data is displayed in a table, a population pyramid and a chart showing percentage change between 2001 and 2011. All other data is displayed in tables, and charts. Charts for change between 2001 and 2011 are coloured according to the degree of change between the two censuses; grey corresponds to smallest change and green the largest change. A marker indicates the average figure for all Leicestershire Electoral Divisions.

GEOGRAPHY

Maps for all County Council Electoral Divisions can be found here:

http://www.leics.gov.uk/index/your_council/local_democracy/conductofcouncillorsandemployees/electoraldivisionmapsindex/electoraldivisionmaps.htm

As Census data is not made available for Electoral Divisions, smaller areas, called Lower Super Output Areas (LSOAs) have been used as building blocks for the figures included in this report. LSOAs are small parcels of geography, containing a minimum of 1,000 people, a maximum of 3,000 and an average of 1,500. LSOAs were initially developed for the 2001 Census and are used to release a range of neighbourhood-level datasets from various sources. There are 396 LSOAs in Leicestershire.

In some instances, LSOAs do not fit neatly within Electoral Divisions and in these cases, population weighted centroids - representing the 'centre of gravity' for population within an area - have been used in order to assign each LSOA to an Electoral Division. Electoral Divisions that fall within this category are indicated with a (*).

More information on Lower Super Output Areas can be found here:

<http://www.ons.gov.uk/ons/guide-method/geography/beginner-s-guide/census/super-output-areas--soas-/index.html>

INDICATOR CHANGES 2001-11

The following questions were asked in slightly different ways in 2011 compared to 2001. As such, care should be taken when making comparison between years.

KS201EW : Ethnic Group

Asian/Asian British: Chinese
Mixed/multiple ethnic group: Other Mixed
Mixed/multiple ethnic group: White and Asian
Mixed/multiple ethnic group: White and Black African
Mixed/multiple ethnic group: White and Black Caribbean
Other ethnic group: Any other ethnic group
White: English/Welsh/Scottish/Northern Irish/British
White: Other White

KS301EW : Health and Provision of Unpaid Care

Day-to-day activities limited
Day-to-day activities limited: Age 16 to 64
Day-to-day activities not limited
Fair health
Very/ bad Health
Very/ good Health

KS601EW : Economic Activity

All usual residents aged 16 and over
Economically active: Employee: Full-time
Economically active: Employee: Part-time
Economically active: Full-time student

Economically active: Self-employed
Economically active: Unemployed
Economically inactive: Long-term sick or disabled
Economically inactive: Looking after home or family
Economically inactive: Other
Economically inactive: Retired
Economically inactive: Student (including full-time)
Long-term unemployed
Unemployed: Age 50 and over
Unemployed: Never worked

KS605EW : Industry

All usual residents aged 16 and over in employment
A Agriculture, forestry and fishing
B Mining and quarrying
C Manufacturing
D, F Electricity, gas, steam, air conditioning supply etc
F Construction
G Wholesale and retail trade; repair of motor vehicles etc
H, J Transport, storage, information and communication
I Accommodation and food service activities
K Financial and insurance activities
L,M,N Real estate activities Professional, scientific etc
O Public administration and defence etc
P Education
Q Human health and social work activities
R, S, T, U Other

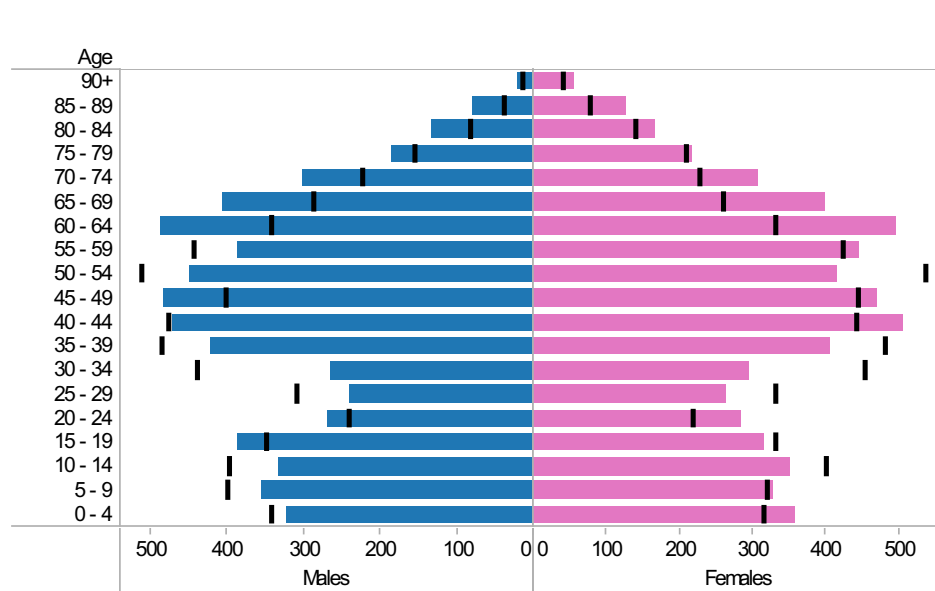
Stanton, Croft and Normanton ED: KS101EW : Usual Resident Population, KS102EW : Age Structure

■ Males
 ■ Females
 ■ Persons

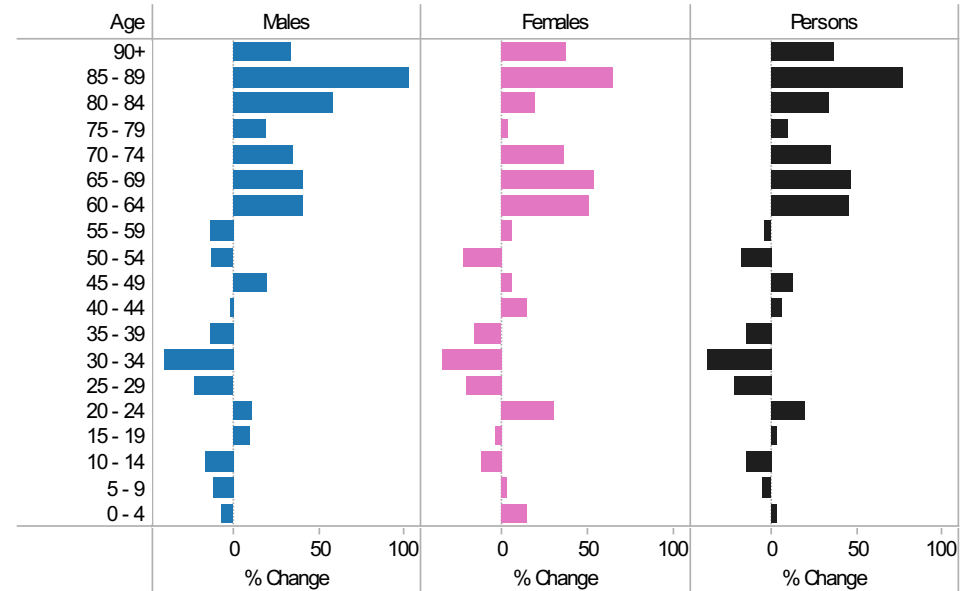
2001-11 Population by sex and quinary age band

Age	Males			Females			Persons		
	2001	2011	Change 2001-11	2001	2011	Change 2001-11	2001	2011	Change 2001-11
90+	15	20	5	40	55	15	55	75	20
85 - 89	39	79	40	77	127	50	116	206	90
80 - 84	84	133	49	139	166	27	223	299	76
75 - 79	156	185	29	208	216	8	364	401	37
70 - 74	225	302	77	225	306	81	450	608	158
65 - 69	288	404	116	259	399	140	547	803	256
60 - 64	344	485	141	329	497	168	673	982	309
55 - 59	444	384	-60	423	446	23	867	830	-37
50 - 54	513	448	-65	536	415	-121	1,049	863	-186
45 - 49	402	482	80	444	471	27	846	953	107
40 - 44	478	471	-7	440	504	64	918	975	57
35 - 39	485	421	-64	480	406	-74	965	827	-138
30 - 34	439	263	-176	452	295	-157	891	558	-333
25 - 29	309	239	-70	330	262	-68	639	501	-138
20 - 24	241	268	27	217	283	66	458	551	93
15 - 19	350	384	34	330	315	-15	680	699	19
10 - 14	398	331	-67	399	351	-48	797	682	-115
5 - 9	400	354	-46	318	327	9	718	681	-37
0 - 4	344	320	-24	313	358	45	657	678	21
All Ages	5,954	5,973	19	5,959	6,199	240	11,913	12,172	259

2011 (coloured bars) and 2001 (black marks) population by sex and quinary age



2001-11 Percentage change by sex and quinary age band



Stanton, Croft and Normanton ED
KS105EW : Household Composition, 2001-11

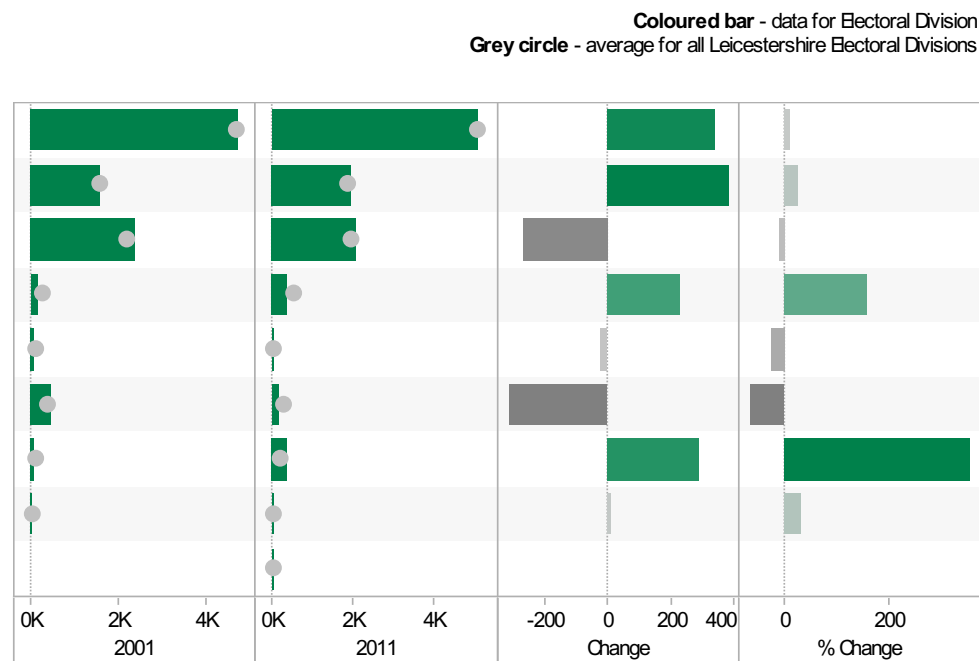
Coloured bar - data for Electoral Division
 Grey circle - average for all Leicestershire Electoral Divisions



Source: Office for National Statistics (ONS), 2013.
 Produced by the Research and Insight Team, Leicestershire County Council.

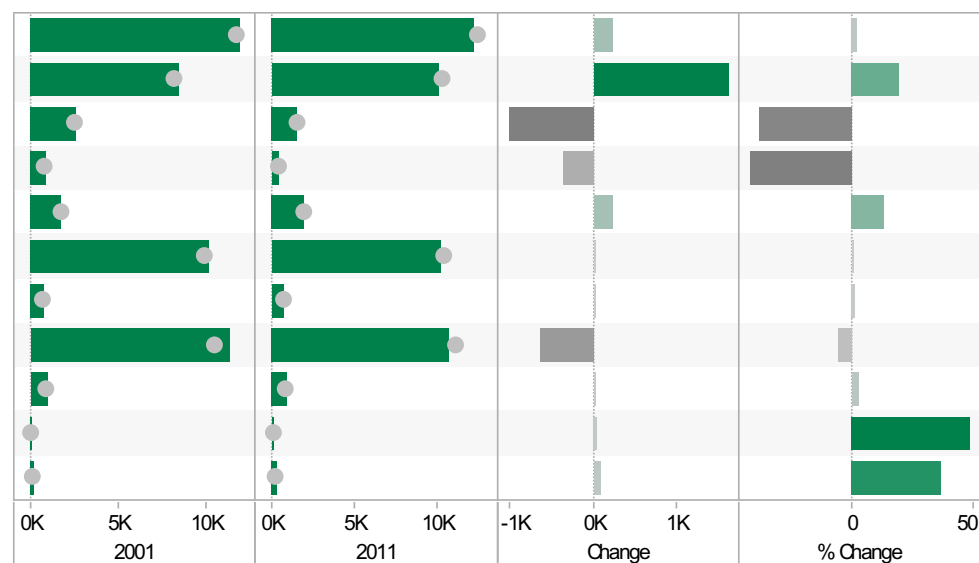
Stanton, Croft and Normanton ED KS402EW: Tenure, 2001-11

	2001	2011	Change	% Change
All Households	4,754	5,095	341	7
Owned; Owned Outright	1,573	1,953	380	24
Owned; Owned with a Mortgage or Loan	2,380	2,110	-270	-11
Private Rented; Private Landlord or Letting Agency	144	371	227	158
Private Rented; Other	80	58	-22	-28
Social Rented; Rented from Council (Local Authority)	462	148	-314	-68
Social Rented; Other	81	369	288	356
Shared Ownership (Part Owned and Part Rented)	34	45	11	32
Living Rent Free		41		



Stanton, Croft and Normanton ED KS301EW: Health and Provision of Unpaid Care, 2001-11

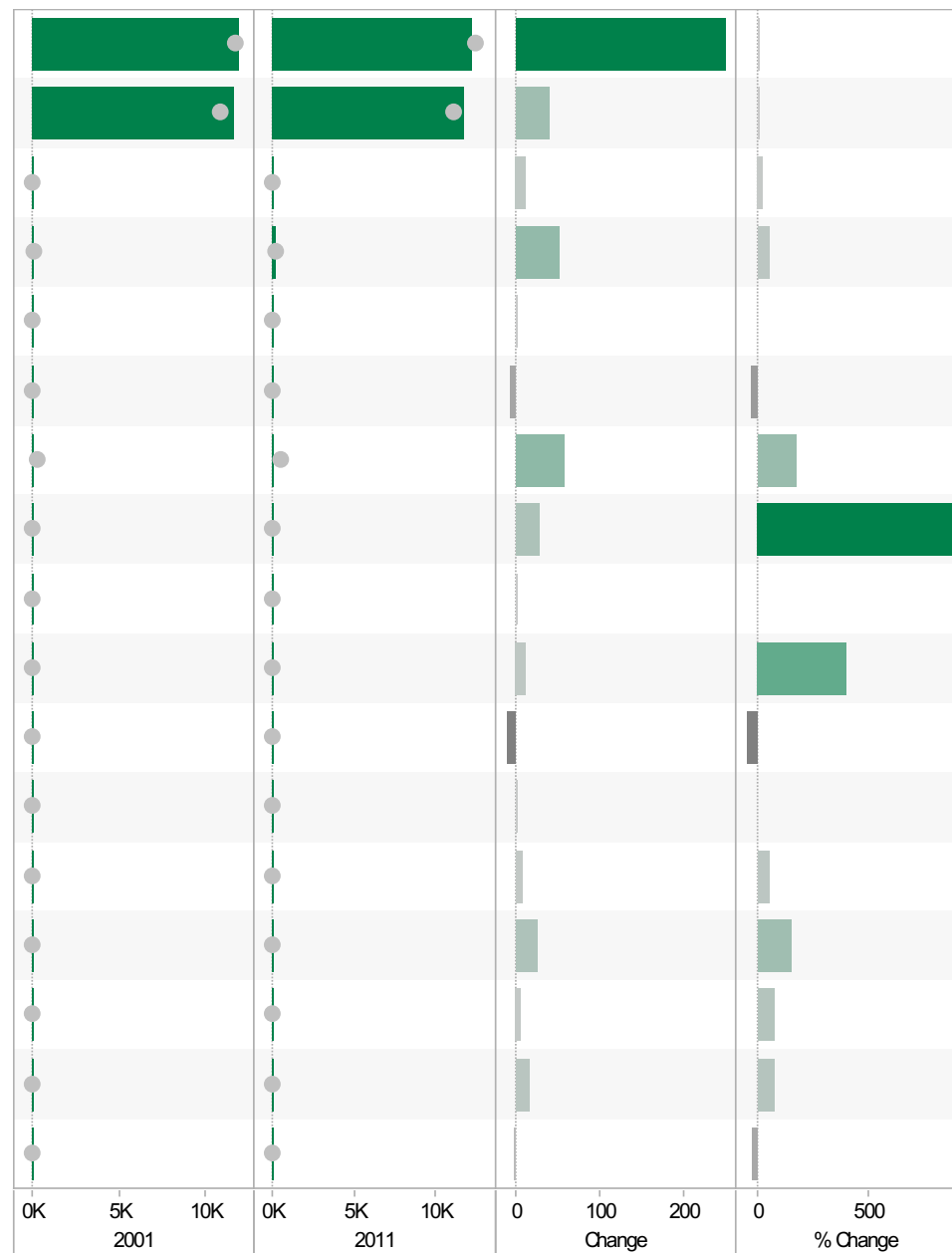
	2001	2011	Change	% Change
All usual residents	11,934	12,172	238	2
Very/ good Health	8,437	10,057	1,620	19
Fair health	2,632	1,616	-1,016	-39
Very/ bad Health	865	499	-366	-42
Day-to-day activities limited	1,758	1,989	231	13
Day-to-day activities not limited	10,176	10,183	7	0
Day-to-day activities limited a lot: Age 16 to 64	760	767	7	1
Provides no unpaid care	11,359	10,715	-644	-6
Provides 1 to 19 hours unpaid care a week	969	996	27	3
Provides 20 to 49 hours unpaid care a week	102	151	49	48
Provides 50 or more hours unpaid care a week	227	310	83	37



Stanton, Croft and Normanton ED
KS201EW : Ethnic Group, 2001-11

Coloured bar - data for Electoral Division
Grey circle - average for all Leicestershire Electoral Divisions

	2001	2011	Change	% Change
All usual residents	11,924	12,172	248	2
White: English/Welsh/Scottish/Northern Irish/British	11,615	11,655	40	0
White: Irish	60	72	12	20
White: Other White	101	154	53	52
Asian/Asian British: Bangladeshi	0	1	1	
Asian/Asian British: Chinese	16	11	-5	-31
Asian/Asian British: Indian	33	91	58	176
Asian/Asian British: Other Asian	3	31	28	933
Asian/Asian British: Pakistani	0	1	1	
Black/African/Caribbean/Black British: African	3	15	12	400
Black/African/Caribbean/Black British: Caribbean	20	10	-10	-50
Black/African/Caribbean/Black British: Other Black	0	2	2	
Mixed/multiple ethnic group: Other Mixed	16	24	8	50
Mixed/multiple ethnic group: White and Asian	18	45	27	150
Mixed/multiple ethnic group: White and Black African	9	16	7	78
Mixed/multiple ethnic group: White and Black Caribbean	21	37	16	76
Other ethnic group: Any other ethnic group	9	7	-2	-22

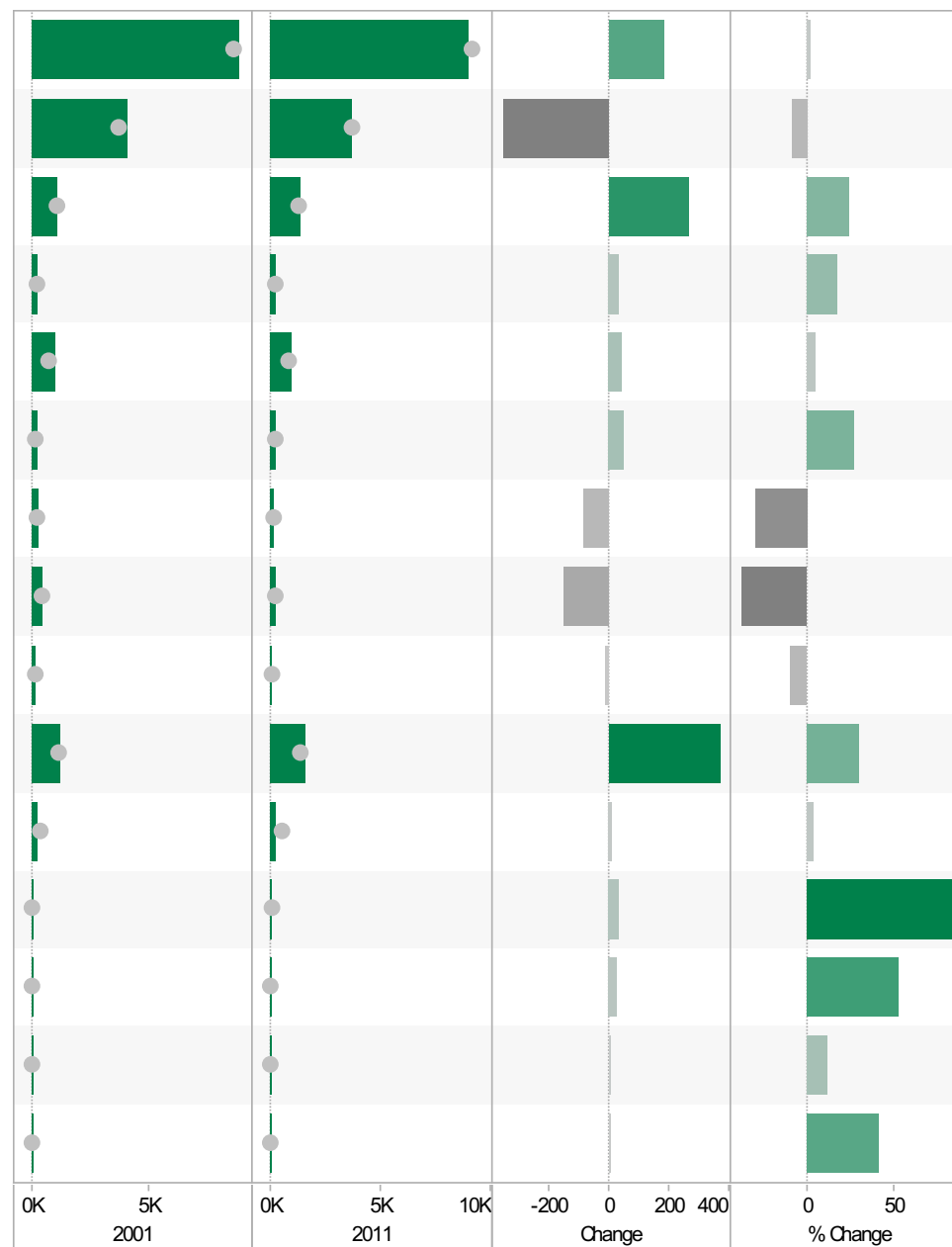


Source: Office for National Statistics (ONS), 2013.
 Produced by the Research and Insight Team, Leicestershire County Council.

Stanton, Croft and Normanton ED
KS601EW : Economic Activity, 2001-11

Coloured bar - data for Electoral Division
 Grey circle - average for all Leicestershire Electoral Divisions

	2001	2011	Change	% Change
All usual residents aged 16 and over	8,816	8,998	182	2
Economically active: Employee: Full-time	4,056	3,701	-355	-9
Economically active: Employee: Part-time	1,104	1,374	270	24
Economically active: Full-time student	188	221	33	18
Economically active: Self-employed	981	1,028	47	5
Economically active: Unemployed	188	240	52	28
Economically inactive: Long-term sick or disabled	277	195	-82	-30
Economically inactive: Looking after home or family	403	251	-152	-38
Economically inactive: Other	136	124	-12	-9
Economically inactive: Retired	1,228	1,599	371	30
Economically inactive: Student (including full-time students)	255	265	10	4
Long-term unemployed	40	75	35	88
Unemployed: Age 16 to 24	47	72	25	53
Unemployed: Age 50 and over	58	65	7	12
Unemployed: Never worked	12	17	5	42

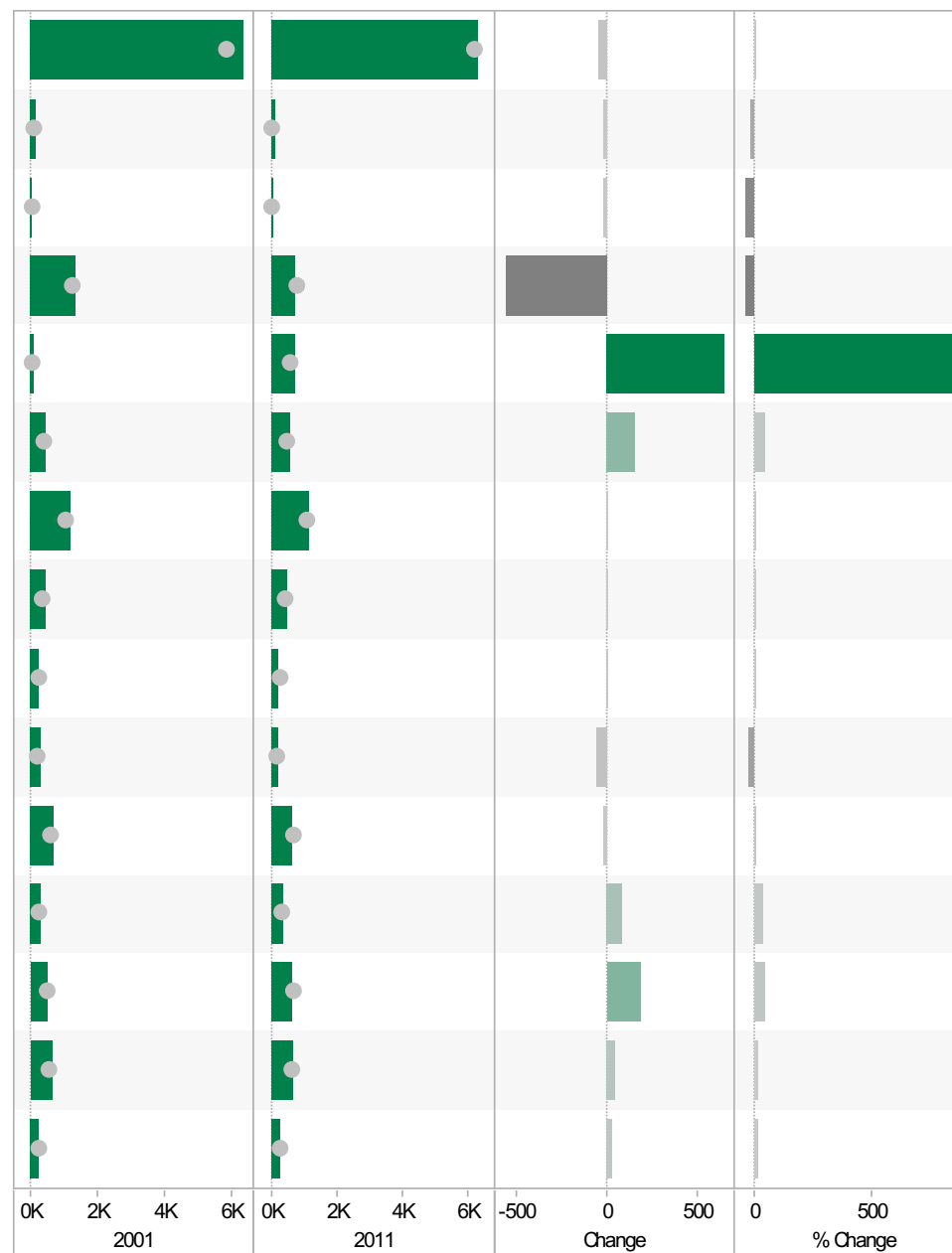


Source: Office for National Statistics (ONS), 2013.
 Produced by the Research and Insight Team, Leicestershire County Council.

Stanton, Croft and Normanton ED
KS605EW : Industry, 2001-11

Coloured bar - data for Electoral Division
 Grey circle - average for all Leicestershire Electoral Divisions

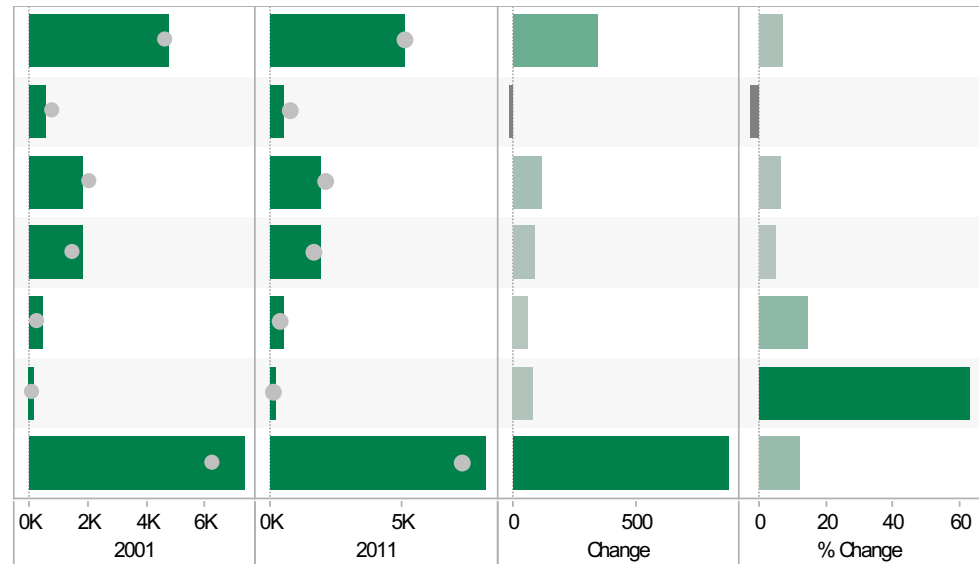
	2001	2011	Change	% Change
All usual residents aged 16 and over in employment	6,313	6,272	-41	-1
A Agriculture, forestry and fishing	115	94	-21	-18
B Mining and quarrying	44	28	-16	-36
C Manufacturing	1,317	755	-562	-43
D, F Electricity, gas, steam, air conditioning supply, water and sewerage	73	722	649	889
F Construction	436	594	158	36
G Wholesale and retail trade; repair of motor vehicles and motor cycles	1,153	1,161	8	1
H, J Transport, storage, information and communication	448	462	14	3
I Accommodation and food service activities	210	225	15	7
K Financial and insurance activities	253	195	-58	-23
L, M, N Real estate activities Professional, scientific and technical activities Administrative and support service activities	658	640	-18	-3
O Public administration and defence; compulsory social security	269	350	81	30
P Education	462	650	188	41
Q Human health and social work activities	647	697	50	8
R, S, T, U Other	228	256	28	12



Source: Office for National Statistics (ONS), 2013.
 Produced by the Research and Insight Team, Leicestershire County Council.

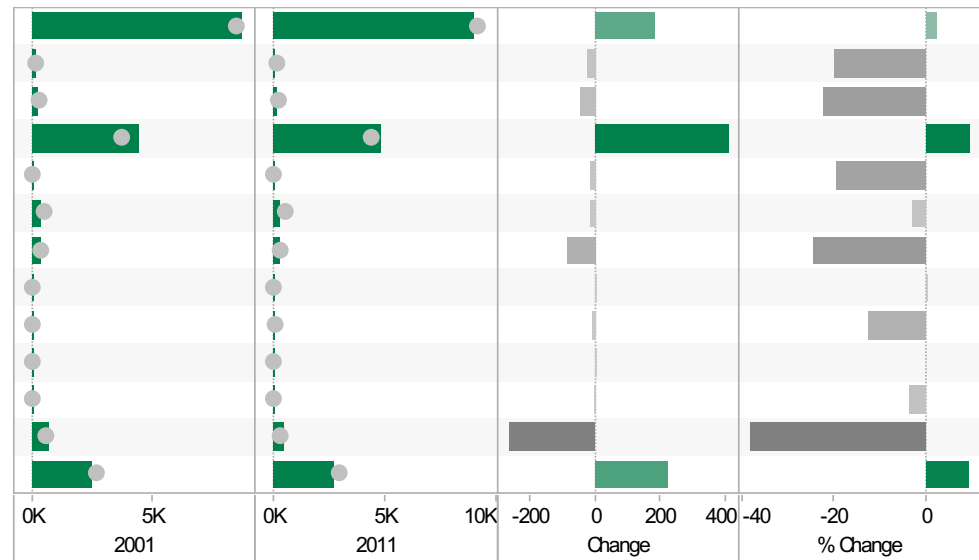
Stanton, Croft and Normanton ED
KS404EW : Car and Van Availability, 2001-11

	2001	2011	Change	% Change
All Households	4,753	5,095	342	7
No Cars or Vans in Household	537	522	-15	-3
1 Car or Van in Household	1,810	1,931	121	7
2 Cars or Vans in Household	1,847	1,939	92	5
3 Cars or Vans in Household	430	493	63	15
4 or More Cars or Vans in Household	129	210	81	63
All Cars or Vans in the Area	7,353	8,228	875	12



Stanton, Croft and Normanton ED
QS701EW : Method of Travel to Work, 2001-11

	2001	2011	Change	% Change
All Usual Residents Aged 16 to 74	8,816	8,998	182	2
Bicycle	111	89	-22	-20
Bus, Minibus or Coach	201	156	-45	-22
Driving a Car or Van	4,436	4,844	408	9
Motorcycle, Scooter or Moped	77	62	-15	-19
On Foot	345	334	-11	-3
Passenger in a Car or Van	360	272	-88	-24
Taxi	17	17	0	0
Train	48	42	-6	-13
Underground, Metro, Light Rail, Tram	0	4	4	
Other Method of Travel to Work	26	25	-1	-4
Work Mainly at or From Home	691	427	-264	-38
Not in Employment	2,504	2,726	222	9



Source: Office for National Statistics (ONS), 2013.
 Produced by the Research and Insight Team, Leicestershire County Council.

If you require information contained in this leaflet in another version e.g. large print, Braille, tape or alternative language please telephone: 0116 305 6803, Fax: 0116 305 7271 or Minicom: 0116 305 6160.

ਜੇ ਆਪ ਆ ਮਾਭਿਨੀ ਆਪਨੀ ਆਧਾਮਾਂ ਸਮਝਵਾਮਾਂ ਥੋੜੀ ਮਦਦ ਈਝਤਾਂ ਡੋ ਤੋ 0116 305 6803 ਨੰਬਰ ਪਰ ਫ਼ੋਨ ਕਰਥੋ ਅਨੇ ਅਮੇ ਆਪਨੇ ਮਦਦ ਕਰਵਾ ਆਵਥਾ ਕਰੀਯੁੰ.

ਜੇਕਰ ਤੁਹਾਨੂੰ ਇਸ ਜਾਣਕਾਰੀ ਨੂੰ ਸਮਝਣ ਵਿਚ ਕੁਝ ਮਦਦ ਚਾਹੀਦੀ ਹੈ ਤਾਂ ਕਿਰਪਾ ਕਰਕੇ 0116 305 6803 ਨੰਬਰ ਤੇ ਫ਼ੋਨ ਕਰੋ ਅਤੇ ਅਸੀਂ ਤੁਹਾਡੀ ਮਦਦ ਲਈ ਕਿਸੇ ਦਾ ਪ੍ਰਬੰਧ ਕਰ ਦਵਾਂਗੇ।

এই তথ্য নিজের ভাষায় বুঝার জন্য আপনার যদি কোন সাহায্যের প্রয়োজন হয়, তবে 0116 305 6803 এই নম্বরে ফোন করলে আমরা উপযুক্ত ব্যক্তির ব্যবস্থা করবো।

اگر آپ کو یہ معلومات سمجھنے میں کچھ مدد درکار ہے تو براہ مہربانی اس نمبر پر کال کریں اور ہم آپ کی مدد کے لئے کسی کا انتظام کر دیں گے۔ 0116 305 6803

假如閣下需要幫助，用你的語言去明白這些資訊，請致電 0116 305 6803，我們會安排有關人員為你提供幫助。

Jeżeli potrzebujesz pomocy w zrozumieniu tej informacji w Twoim języku, zadzwoń pod numer 0116 305 6803, a my Ci dopomożemy.

Research & Insight Team
Strategy, Partnerships & Communities
Chief Executive's Department
Leicestershire County Council
County Hall
Glenfield
Leicester
LE3 8RA

ri@leics.gov.uk
www.lsr-online.org