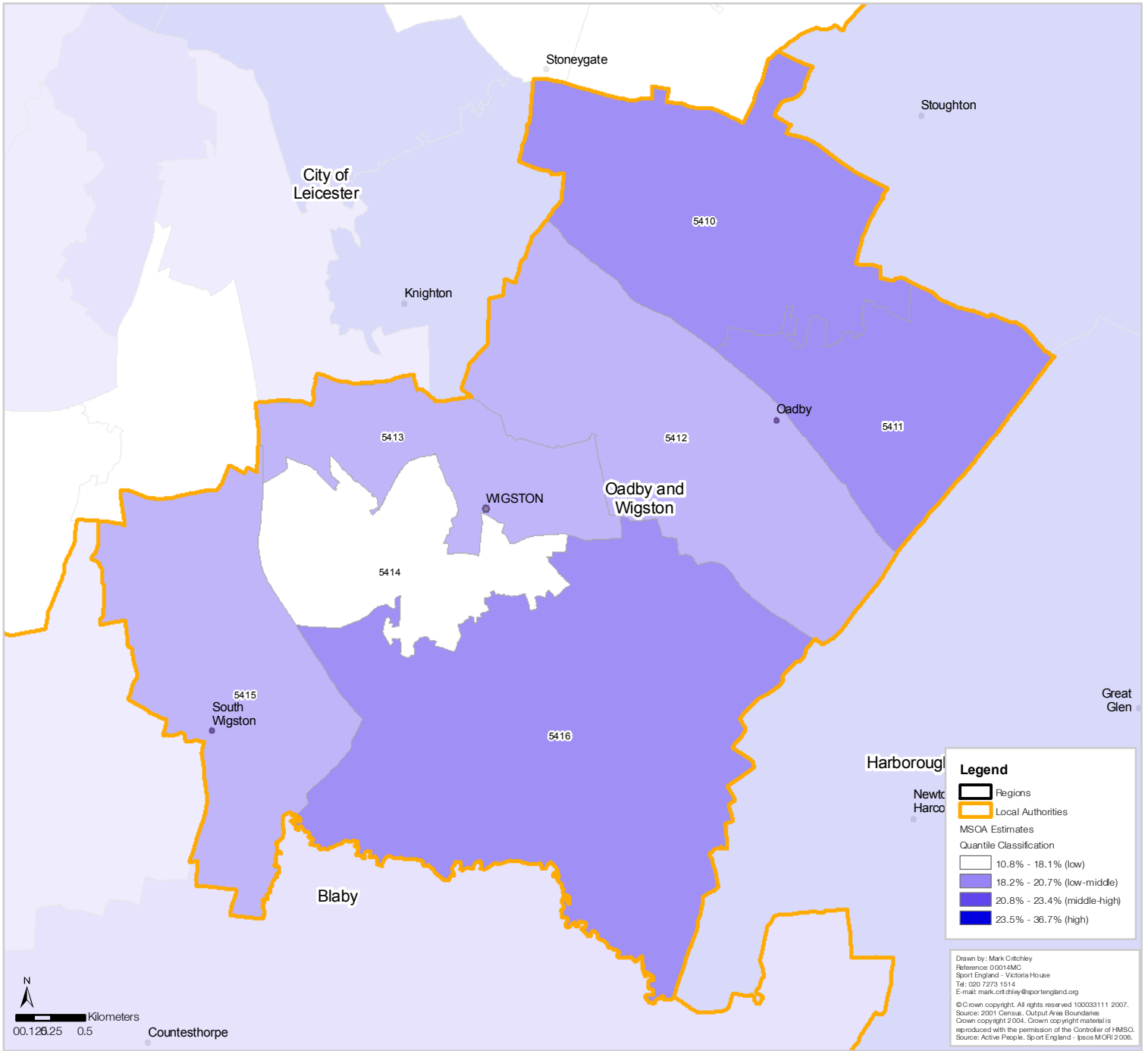


**Oadby and Wigston District Council Participation (3 x 30) Estimates by Middle Super Output Area (MSOA)**



*MSOA Code	Estimate	Lower **CL	Upper **CL
E02005410	23.25%	18.46%	29.19%
E02005411	21.47%	17.00%	26.95%
E02005412	19.96%	15.77%	25.18%
E02005413	19.39%	15.30%	24.53%
E02005414	17.94%	14.11%	22.84%
E02005415	18.11%	14.21%	23.10%
E02005416	21.11%	16.72%	26.54%

\*Add E0200 to MSAO map label to reference correct code in table.  
 \*\* Confidence Level

Participation is defined as the percent of the adult population participating in at least 30 minutes of sport and active recreation (including recreational walking and cycling) of at least moderate intensity on at least 3 days a week.